



Customer Fact Sheet

Topic:

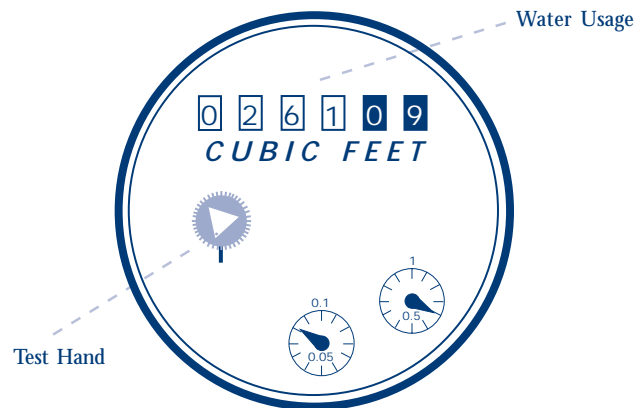
How to Read Your Meter and Check for Leaks

Water Saving Tips

- ◆ Do not over water plants and lawns. For best results, water in the morning when evaporation loss is at a minimum.
- ◆ Avoid watering down sidewalks and paved areas.
- ◆ Use a bucket of water when washing your car. Only use a hose to rinse off the car.
- ◆ Repair faucet leaks and running toilets.
- ◆ Take shorter showers. An extra five minutes could mean another 50 gallons down the drain.
- ◆ Wash only full loads in the washing machine and dishwasher.
- ◆ Avoid running the faucet while shaving, brushing your teeth, peeling vegetables, or washing dishes.
- ◆ Use an ultra-low flush toilet. This would save 2-5 gallons per flush.
- ◆ Turn off automatic sprinklers when it rains.

How to Read Your Meter

You can monitor your water usage by reading your meter, which is usually located near the curb in front of your home under a concrete lid. To read a straight-reading meter like the one depicted below, simply read the first four numbers from left to right. Disregard the last two digits (pictured below in blue or colored red on your meter). For this meter, the read would be 261. Subtract your last reading from this reading to determine your use in cubic feet. To convert the usage to gallons, multiply by 748.



Checking for Leaks

While you're carefully watching your water usage, it is important to make sure that water is not slipping away due to undetected leaks in your system. To check for household leaks, turn off the water inside and outside your home. Observe the test hand (depicted above in light blue); if it moves, there is water pushing through the meter, indicating a leak. To locate a leak, try:

- ◆ Looking for wet spots that could indicate a leak in the pipe between the meter and the home or the sprinkler system.
- ◆ Dropping a dye tablet in the toilet tank. (Don't flush.) If colored water appears in the bowl, the toilet leaks.
- ◆ Checking all faucets for drips. Thirty drips per minute adds up to approximately 15 gallons per year.