

Water Resources Planning Department

Water Supply / Demand Analysis and Projections
for
Antelope Valley District

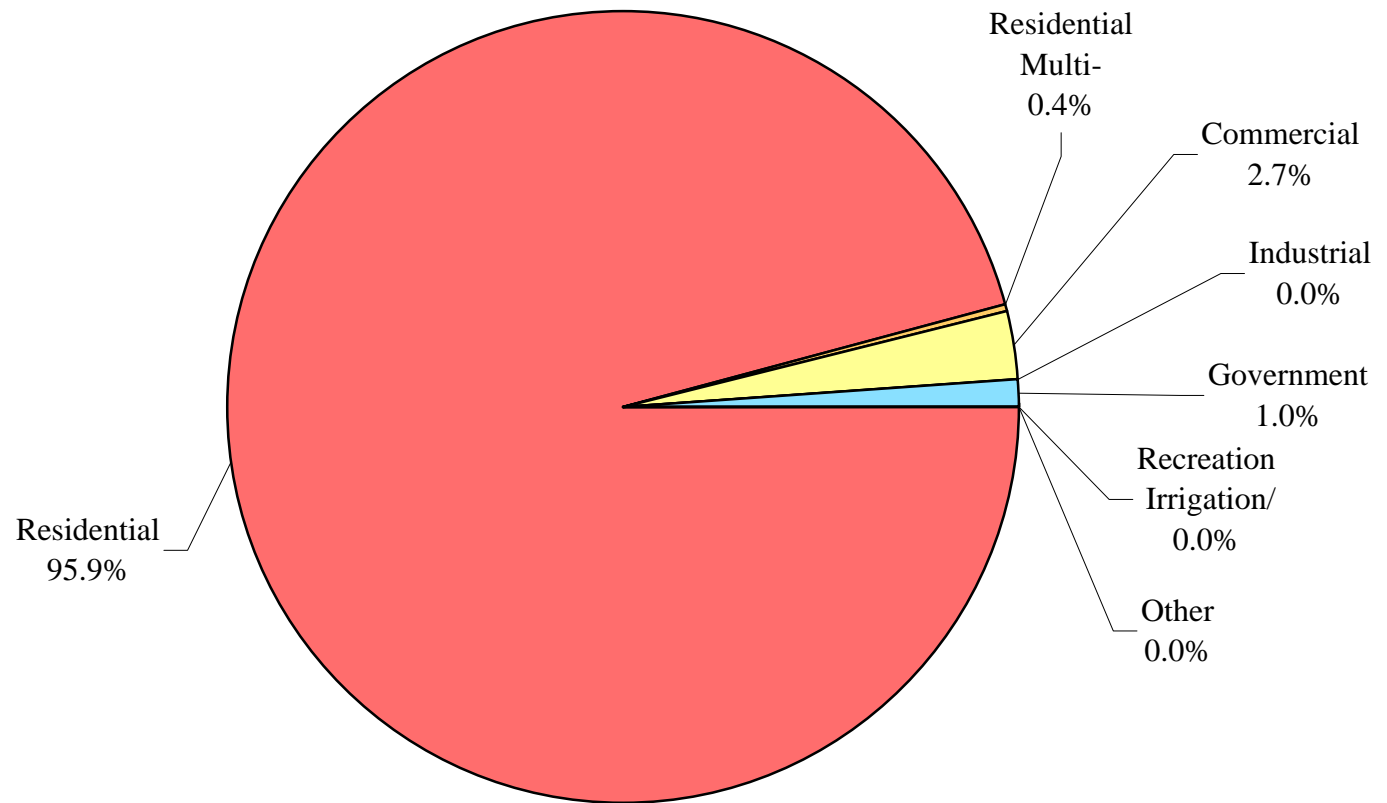
2010



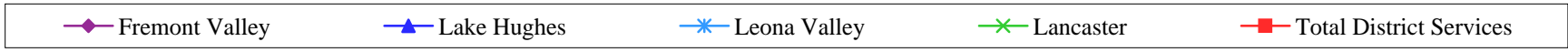
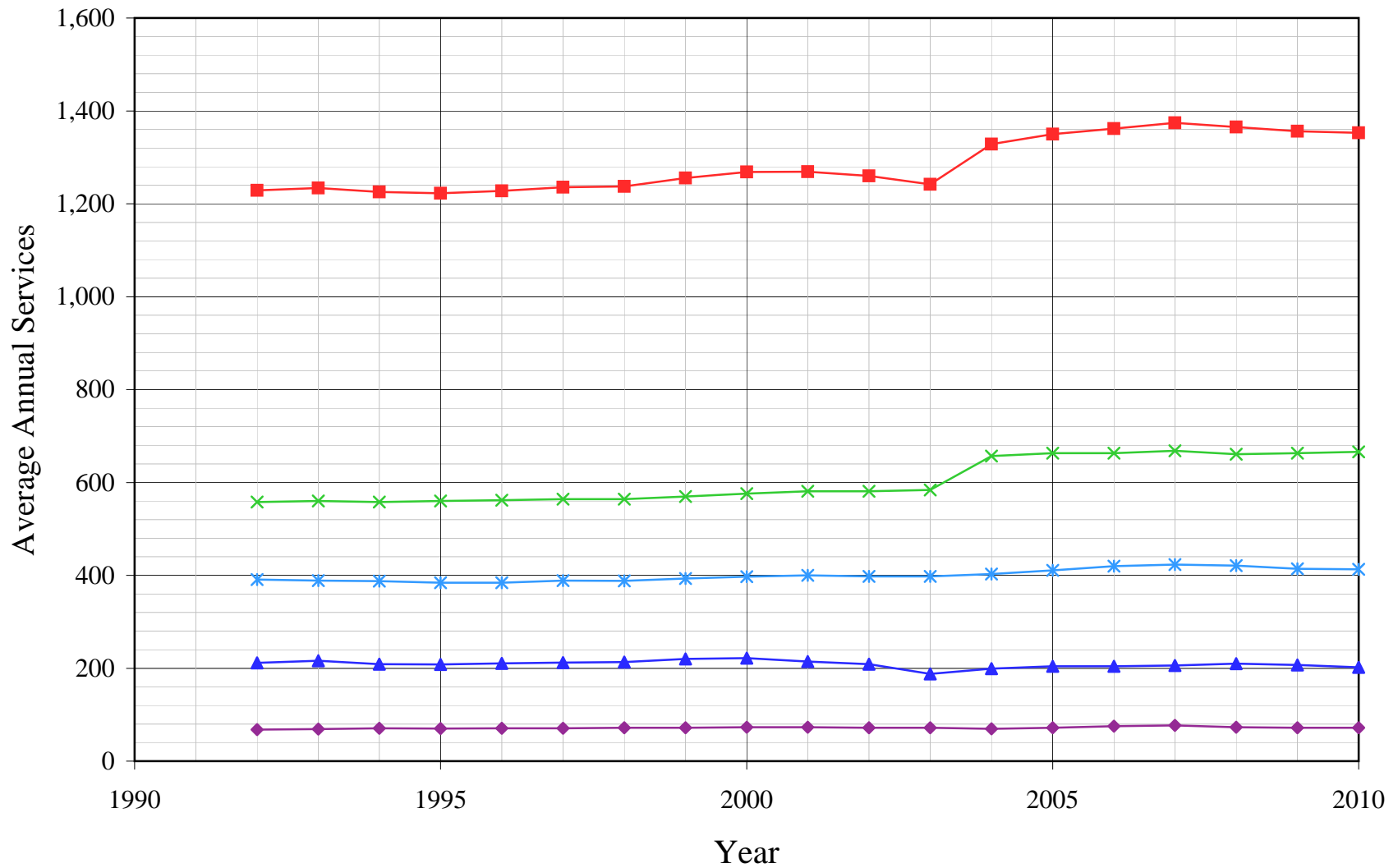
Table of Contents for Worksheets

Worksheet	Title
1	Annual Services
2	Service Growth Percentage
3	District Sales (ccf)
4	District Sales (AF)
5	Demand per Service (Gallons/Service/Year)
6	Demand per Service (Gallons per Day)
7	Percentage Change in Annual Demand
8	Percentage of Total Sales
9	Percentage of Total Demand
10	Demand Scenario 1 (Low Demand Projection)
11	Demand Scenario 2 (Average Demand Projection)
12	Demand Scenario 3 (High Demand Projection)
13	Demand Scenario 4 (Alternate Service Projection)
14	Not used
15	Actual & Projected Annual Average Services
16	Actual & Projected Demand in Acre-Feet
17	Projected Annual Supply by Source
18	Historical and Projected Average Day, Maximum Day, and Peak Demands
19	Population as of the 2000 Average Annual Services
20	Temperature & Rainfall History
21	Groundwater Facilities (if available)
22	Per Capita Water Demand Calculation
23	Indoor/Outdoor Water Usage
24	SB-7 Compliance Demand Worksheet

Antelope Valley District Distribution of Services (2010)



Antelope Valley District Historical Annual Services



California Water Service Company - Antelope Valley District
Water Supply and Demand Analysis and Projections
Annual Services

Year	Residential	Multi-Residential	Multi-Res. units	Commercial	Industrial	Government	Irrigation/Recreation	Other	Total	Annual Change
1990										
1991										
1992	1,172	3		31	0	9	12	2	1,229	
1993	1,173	6		31	0	10	12	2	1,234	5
1994	1,169	11		32	0	10	3	2	1,226	-9
1995	1,166	11		31	0	10	3	1	1,223	-3
1996	1,172	10		32	0	10	3	1	1,228	5
1997	1,180	10		32	0	10	3	1	1,235	8
1998	1,183	9		31	0	10	3	1	1,237	2
1999	1,199	9		35	0	10	2	1	1,255	18
2000	1,211	10		32	0	12	2	1	1,268	13
2001	1,213	10		32	0	12	2	1	1,269	1
2002	1,206	7	10	33	0	12	1	1	1,260	-9
2003	1,186	6	17	38	0	11	0	1	1,242	-18
2004	1,269	6	17	39	0	12	0	2	1,328	87
2005	1,291	6	17	38	0	12	0	3	1,350	22
2006	1,305	6	17	37	0	11	0	3	1,362	12
2007	1,319	6	17	36	0	10	2	1	1,374	12
2008	1,308	6	17	37	0	13	0	1	1,365	-9
2009	1,298	6	17	38	0	14	0	0	1,356	-9
2010	1,297	5	0	37	0	14	0	0	1,353	-3
5 Yr Avg.	1,304	6	17	37	0	12	0	2	1,361	6
10 Yr Avg.	1,261	7	16	36	0	12	1	1	1,317	10

Five year average is from years 2005 through 2009.

Ten year average is from years 2000 through 2009.

California Water Service Company - Antelope Valley District
Water Supply and Demand Analysis and Projections
Service Growth Percentage

Year	Residential	Multi-Residential	Multi-Res. units	Commercial	Industrial	Government	Irrigation/Recreation	Other	Total
1991									
1992									
1993	0.14%	83.33%		0.59%	0.00%	11.11%	0.00%	0.00%	0.44%
1994	-0.40%	87.70%		1.17%	0.00%	0.00%	-76.52%	-4.55%	-0.69%
1995	-0.23%	3.42%		-0.29%	0.00%	0.00%	6.45%	-38.10%	-0.24%
1996	0.49%	-9.09%		1.73%	0.00%	0.00%	0.00%	-15.38%	0.42%
1997	0.71%	-1.82%		-1.42%	0.00%	0.00%	0.00%	0.00%	0.63%
1998	0.26%	-12.04%		-0.58%	0.00%	0.00%	0.00%	0.00%	0.14%
1999	1.33%	2.11%		10.14%	0.00%	0.00%	-30.30%	0.00%	1.47%
2000	1.03%	8.25%		-6.05%	0.00%	20.00%	-4.35%	100.00%	1.03%
2001	0.12%	0.05%		-1.40%	0.00%	0.00%	-22.73%	0.00%	0.04%
2002	-0.57%	-26.70%		3.13%	0.00%	0.00%	-35.29%	0.00%	-0.71%
2003	-1.66%	-14.29%		15.15%	0.00%	-8.33%	-100.00%	0.00%	-1.43%
2004	7.05%	0.00%	0.00%	2.63%	0.00%	9.09%	0.00%	100.00%	6.97%
2005	1.71%	0.00%	0.00%	-2.56%	0.00%	0.00%	-	50.00%	1.63%
2006	1.08%	0.00%	0.00%	-2.63%	0.00%	-8.33%	0.00%	0.00%	0.89%
2007	1.07%	0.00%	0.00%	-2.70%	0.00%	-9.09%	0.00%	-66.67%	0.88%
2008	-0.83%	0.00%	0.00%	2.78%	0.00%	30.00%	0.00%	0.00%	-0.66%
2009	-0.76%	0.00%	0.00%	2.70%	0.00%	7.69%	0.00%	0.00%	-0.66%
2010	-0.08%	-16.67%	-100.00%	-2.63%	0.00%	0.00%	-	#DIV/0!	-0.22%
5 Yr. Avg.	0.45%	0.00%	0.00%	-0.48%	0.00%	4.05%	0.00%	-3.33%	0.42%
10 Yr. Avg.	0.82%	-3.27%	0.00%	1.11%	0.00%	4.10%	-18.04%	18.33%	0.80%

Five year average is from years 2005 through 2009.

Ten year average is from years 2000 through 2009.

California Water Service Company - Antelope Valley District
Water Supply and Demand Analysis and Projections
Sales (ccf)

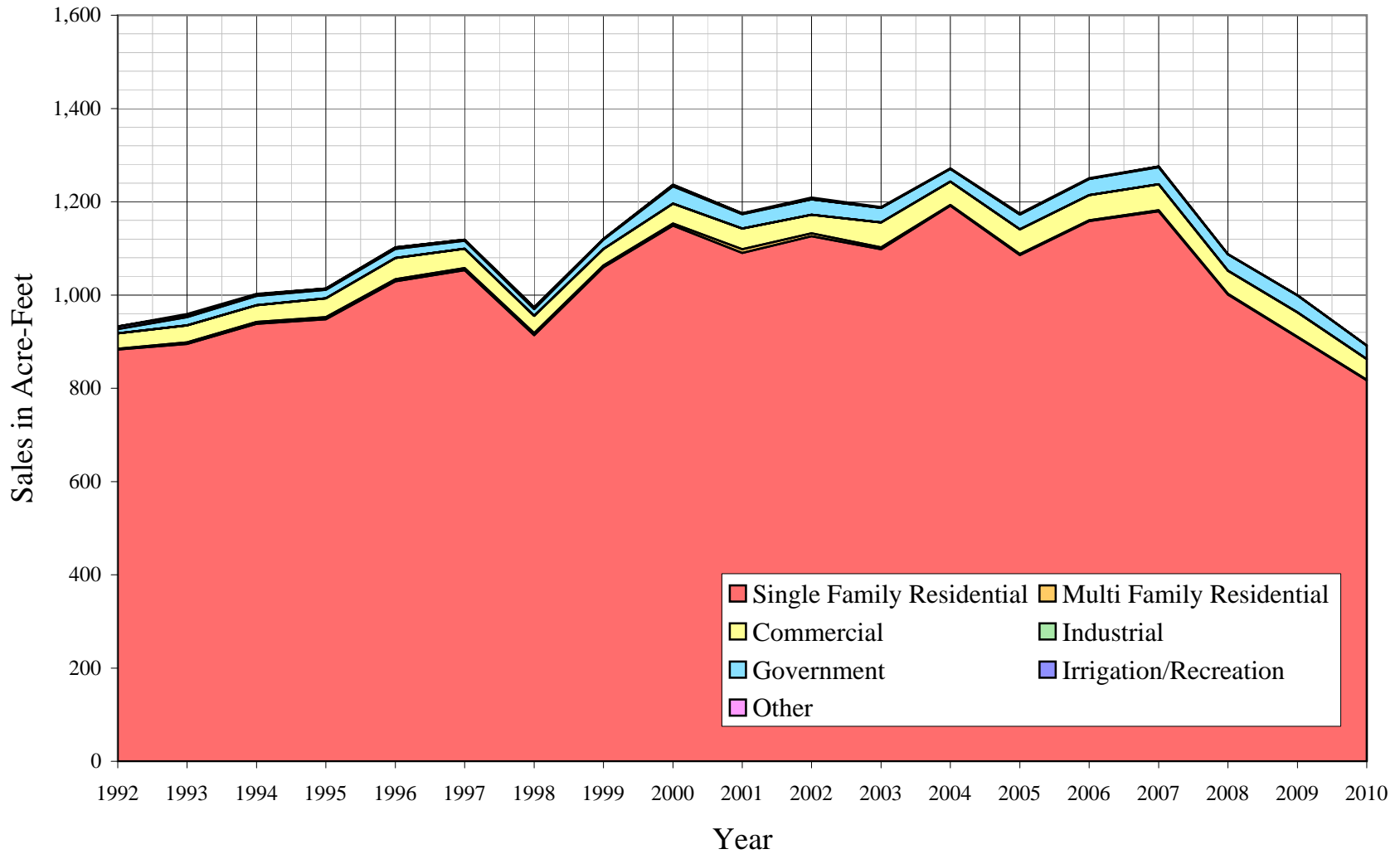
Worksheet 3

Year	Multi-Residential	Residential	Commercial	Industrial	Government	Irrigation/ Recreation	Other	Unaccounted Water	Total(ccf) Sales	Total(ccf) Demand	Total(kgal) Demand
1990											
1991											
1992	384,562	866	14,400	0	3,921	2,452	85	22,813	406,286	429,099	320,988
1993	389,772	1,565	15,835	0	7,660	1,947	1,101	26,406	417,880	444,286	332,349
1994	408,712	1,739	15,719	0	8,550	1,494	430	40,696	436,644	477,340	357,075
1995	413,005	1,997	17,522	0	7,884	1,180	86	38,879	441,674	480,553	359,479
1996	448,297	1,982	19,794	0	8,605	1,344	10	49,188	480,032	529,220	395,884
1997	458,693	2,126	17,943	0	7,538	988	71	49,518	487,359	536,877	401,612
1998	397,957	2,129	16,108	0	6,101	1,889	3	36,279	424,187	460,466	344,452
1999	461,449	1,677	15,428	0	8,777	622	30	39,901	487,983	527,884	394,885
2000	500,424	2,082	18,576	0	16,118	1,171	392	21,782	538,763	560,545	419,317
2001	474,767	3,591	19,230	0	13,378	759	309	30,087	512,034	542,121	405,535
2002	490,599	2,541	17,379	0	14,493	56	1726	15,089	526,794	541,883	405,357
2003	478,247	1,853	23,187	0	13,735	0	638	-1,378	517,660	516,282	386,206
2004	518,954	881	21,731	0	11,975	0	333	38,204	553,874	592,078	442,905
2005	472,976	991	22,894	0	13,996	0	958	57,998	511,815	569,813	426,250
2006	504,664	759	23,442	0	15,125	0	896	3,313	544,886	548,199	410,081
2007	513,835	903	24,277	0	15,870	810	65	13,521	555,760	569,281	425,852
2008	436,024	698	21,586	0	15,227	0	163	38,240	473,698	511,938	382,956
2009	396,163	468	22,833	0	15,821	0	216	9,432	435,501	444,933	332,833
2010	355,882	603	19,370		12,583		36	22,535	388,474	411,009	307,456
5 Yr. Avg.	464,732	764	23,006	0	15,208	162	460	24,501	504,332	528,833	395,594
10 Yr. Avg.	478,665	1,477	21,514	0	14,574	280	570	22,629	517,079	539,707	403,729

Five year average is from years 2005 through 2009.

Ten year average is from years 2000 through 2009.

Antelope Valley District Historical Sales



California Water Service Company - Antelope Valley District
Water Supply and Demand Analysis and Projections
Sales (AF)

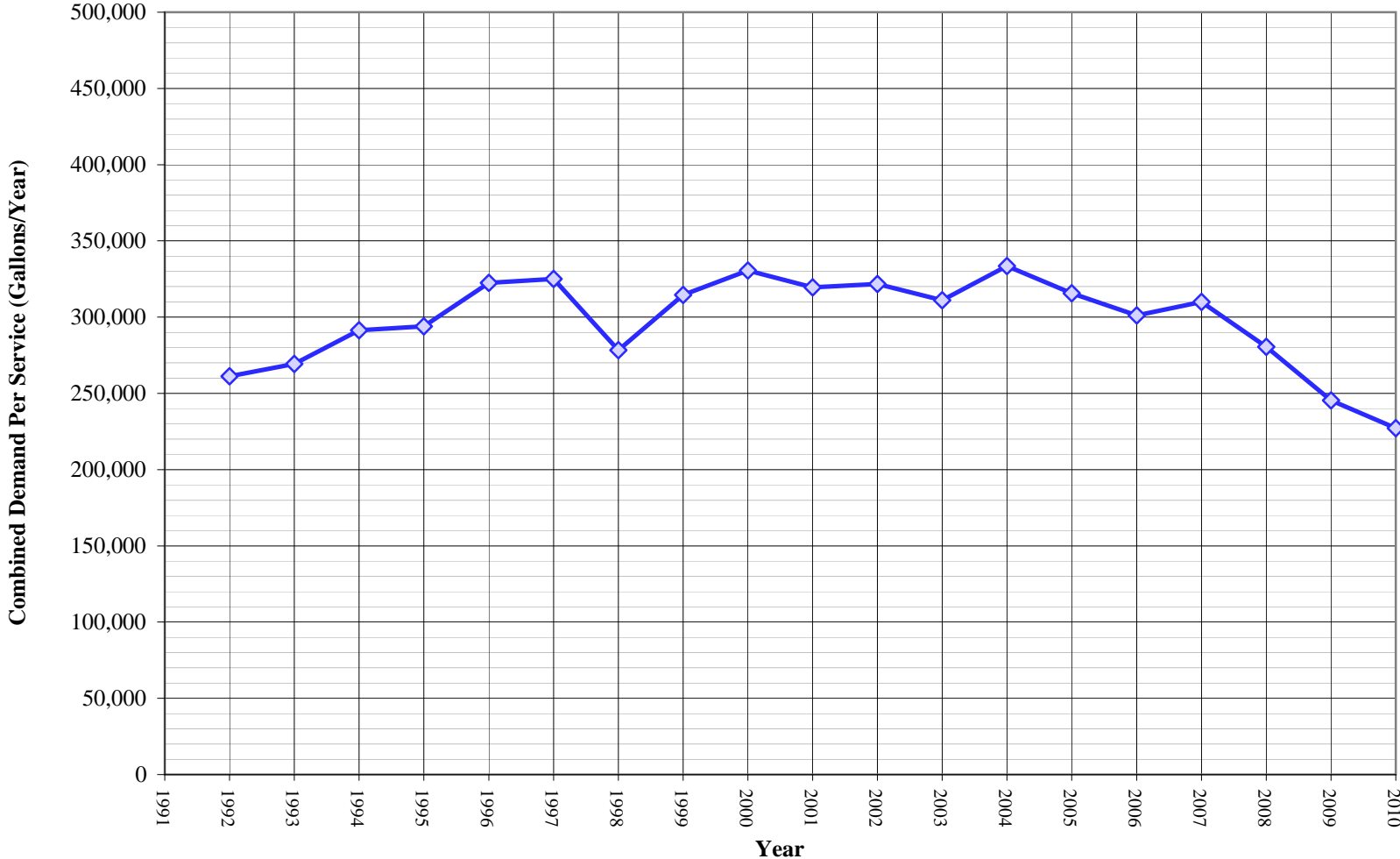
Worksheet 4

Year	Residential	Multi-Residential	Commercial	Industrial	Government	Irrigation/ Recreation	Other	Unaccounted Water	Total(AF) Sales	Total(AF) Demand	Total(Mgal) Demand
1990											
1991											
1992	882.8	2.0	33.1	0.0	9.0	5.6	0.2	52.4	932.7	985.1	321.0
1993	894.8	3.6	36.4	0.0	17.6	4.5	2.5	60.6	959.3	1,019.9	332.3
1994	938.3	4.0	36.1	0.0	19.6	3.4	1.0	93.4	1,002.4	1,095.8	357.1
1995	948.1	4.6	40.2	0.0	18.1	2.7	0.2	89.3	1,013.9	1,103.2	359.5
1996	1,029.1	4.6	45.4	0.0	19.8	3.1	0.0	112.9	1,102.0	1,214.9	395.9
1997	1,053.0	4.9	41.2	0.0	17.3	2.3	0.2	113.7	1,118.8	1,232.5	401.6
1998	913.6	4.9	37.0	0.0	14.0	4.3	0.0	83.3	973.8	1,057.1	344.5
1999	1,059.3	3.8	35.4	0.0	20.1	1.4	0.1	91.6	1,120.3	1,211.9	394.9
2000	1,148.8	4.8	42.6	0.0	37.0	2.7	0.9	50.0	1,236.8	1,286.8	419.3
2001	1,089.9	8.2	44.1	0.0	30.7	1.7	0.7	69.1	1,175.5	1,244.5	405.5
2002	1,126.3	5.8	39.9	0.0	33.3	0.1	4.0	34.6	1,209.4	1,244.0	405.4
2003	1,097.9	4.3	53.2	0.0	31.5	0.0	1.5	-3.2	1,188.4	1,185.2	386.2
2004	1,191.4	2.0	49.9	0.0	27.5	0.0	0.8	87.7	1,271.5	1,359.2	442.9
2005	1,085.8	2.3	52.6	0.0	32.1	0.0	2.2	133.1	1,175.0	1,308.1	426.2
2006	1,158.5	1.7	53.8	0.0	34.7	0.0	2.1	7.6	1,250.9	1,258.5	410.1
2007	1,179.6	2.1	55.7	0.0	36.4	1.9	0.1	31.0	1,275.8	1,306.9	425.9
2008	1,001.0	1.6	49.6	0.0	35.0	0.0	0.4	87.8	1,087.5	1,175.2	383.0
2009	909.5	1.1	52.4	0.0	36.3	0.0	0.5	21.7	999.8	1,021.4	332.8
2010	817.0	1.4	44.5	0.0	28.9	0.0	0.1	51.7	891.8	943.5	307.5
5 Yr. Avg.	1,066.9	1.8	52.8	0.0	34.9	0.4	1.1	56.2	1,157.8	1,214.0	395.6
10 Yr. Avg.	1,098.9	3.4	49.4	0.0	33.5	0.6	1.3	51.9	1,187.0	1,239.0	403.7

Five year average is from years 2005 through 2009.

Ten year average is from years 2000 through 2009.

Antelope Valley District Historical Demand Per Service



California Water Service Company - Antelope Valley District
Water Supply and Demand Analysis and Projections
Demand per Service (Gallons per Year)

Worksheet 5

Year	Multi-Residential			Commercial	Industrial	Government	Irrigation/ Recreation	Total Other	Unaccounted/ Total Services	Combined Demand/Service
	Residential	(Service)	(Unit)							
1980										
1981										
1982										
1983										
1984										
1985										
1986										
1987										
1988										
1989										
1990										
1991										
1992	245,530	209,587		347,482	0	325,901	152,852	31,792	13,888	261,236
1993	248,510	206,594		379,882	0	573,008	121,371	411,803	16,006	269,300
1994	261,619	122,303		372,752	0	639,584	396,564	168,490	24,840	291,360
1995	264,965	135,805		416,708	0	589,764	294,234	54,435	23,788	294,020
1996	286,201	148,264		462,717	0	643,699	335,127	7,481	29,970	322,453
1997	290,763	161,981		425,491	0	563,882	246,358	53,112	29,983	325,072
1998	251,603	184,407		384,191	0	456,387	471,023	2,244	21,936	278,417
1999	287,918	142,261		334,080	0	656,565	222,529	11,221	23,777	314,558
2000	309,049	163,161		428,162	0	1,004,759	437,984	293,236	12,848	330,621
2001	292,853	281,283		449,532	0	833,953	367,382	231,148	17,738	319,615
2002	304,368	271,543		393,951	0	903,460	41,891	1,291,138	8,960	321,774
2003	301,709	231,023	81,538	456,450	0	934,045	0	477,257	-830	311,016
2004	305,833	109,839	38,767	416,818	0	746,494	0	124,551	21,515	333,429
2005	274,059	123,553	43,607	450,682	0	872,478	0	238,878	32,137	315,741
2006	289,283	94,629	33,398	473,941	0	1,028,572	0	223,418	1,819	301,088
2007	291,414	112,582	39,735	504,457	0	1,187,159	302,961	0	7,361	309,936
2008	249,364	87,023	30,714	436,418	0	876,199	0	0	20,956	280,554
2009	228,313	58,348	20,593	449,481	0	845,352	0	0	5,203	245,452
2010	205,257	90,215		391,615	0	672,338	0	0	12,459	227,240
5 Yr. Avg.	266,487	95,227	33,610	462,996	0	961,952	60,592	92,459	13,496	290,554
10 Yr. Avg.	284,625	153,298	41,193	445,989	0	923,247	115,022	287,963	12,771	306,923

Five year average is from years 2005 through 2009.

Ten year average is from years 2000 through 2009.

California Water Service Company - Antelope Valley District
Water Supply and Demand Analysis and Projections
Demand per Service (Gallons per Day)

Worksheet 6

Year	Multi-Residential			Commercial	Industrial	Government	Irrigation/ Recreation	Total Other	Unaccounted/ Total Services	Combined Demand/Serv
	Residential	(Service)	(Unit)							
1980										
1981										
1982										
1983										
1984										
1985										
1986										
1987										
1988										
1989										
1990										
1991										
1992	673	574	0	952	0	893	419	87	38	716
1993	681	566	0	1,041	0	1,570	333	1,128	44	738
1994	717	335	0	1,021	0	1,752	1,086	462	68	798
1995	726	372	0	1,142	0	1,616	806	149	65	806
1996	784	406	0	1,268	0	1,764	918	20	82	883
1997	797	444	0	1,166	0	1,545	675	146	82	891
1998	689	505	0	1,053	0	1,250	1,290	6	60	763
1999	789	390	0	915	0	1,799	610	31	65	862
2000	847	447	0	1,173	0	2,753	1,200	803	35	906
2001	802	771	0	1,232	0	2,285	1,007	633	49	876
2002	834	744	0	1,079	0	2,475	115	3,537	25	882
2003	827	633	223	1,251	0	2,559	0	1,308	-2	852
2004	838	301	106	1,142	0	2,045	0	341	59	914
2005	751	339	119	1,235	0	2,390	0	654	88	865
2006	793	259	92	1,298	0	2,818	0	612	5	825
2007	798	308	109	1,382	0	3,252	830	0	20	849
2008	683	238	84	1,196	0	2,401	0	0	57	769
2009	626	160	56	1,231	0	2,316	0	0	14	672
2010	562	247		1,073	0	1,842	0	0	34	623
5 Yr. Avg.	730	261	92	1,268	0	2,635	166	253	37	796
10 Yr. Avg.	780	420	79	1,222	0	2,529	315	789	35	841

Five year average is from years 2005 through 2009.

Ten year average is from years 2000 through 2009.

California Water Service Company - Antelope Valley District

Water Supply and Demand Analysis and Projections

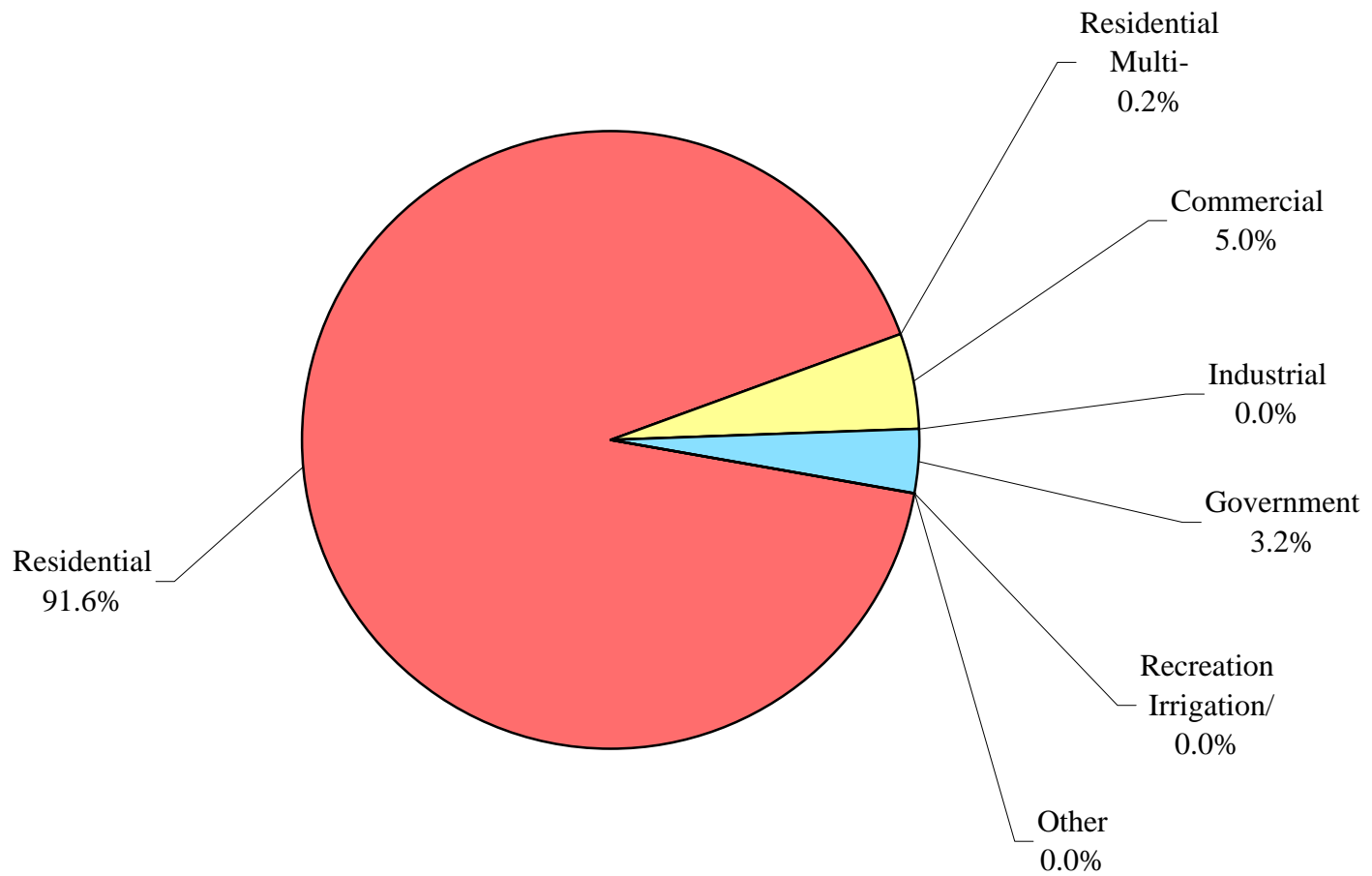
Percentage Change in Annual Demand

Year	Residential	Multi-Residential	Commercial	Industrial	Government	Irrigation/ Recreation	Other	Unaccounted Water	Total
1993	1.35%	80.72%	9.97%	0.00%	95.36%	-20.60%	1195.29%	15.75%	3.54%
1994	4.86%	11.12%	-0.73%	0.00%	11.62%	-23.27%	-60.94%	54.12%	7.44%
1995	1.05%	14.84%	11.47%	0.00%	-7.79%	-21.02%	-80.00%	-4.46%	0.67%
1996	8.55%	-0.75%	12.97%	0.00%	9.15%	13.90%	-88.37%	26.51%	10.13%
1997	2.32%	7.27%	-9.35%	0.00%	-12.40%	-26.49%	610.00%	0.67%	1.45%
1998	-13.24%	0.14%	-10.23%	0.00%	-19.06%	91.19%	-95.77%	-26.74%	-14.23%
1999	15.95%	-21.23%	-4.22%	0.00%	43.86%	-67.07%	900.00%	9.99%	14.64%
2000	8.45%	24.15%	20.40%	0.00%	83.64%	88.26%	1206.67%	-45.41%	6.19%
2001	-5.13%	72.48%	3.52%	0.00%	-17.00%	-35.18%	-21.17%	38.12%	-3.29%
2002	3.33%	-29.24%	-9.63%	0.00%	8.33%	-92.62%	458.58%	-49.85%	-0.04%
2003	-2.52%	-27.08%	33.42%	0.00%	-5.23%	-100.00%	-63.04%	-109.13%	-4.72%
2004	8.51%	-52.46%	-6.28%	0.00%	-12.81%	0.00%	-47.81%	-2873.40%	14.68%
2005	-8.86%	12.49%	5.35%	0.00%	16.88%	0.00%	187.69%	51.81%	-3.76%
2006	6.70%	-23.41%	2.39%	0.00%	8.07%	0.00%	-6.47%	-94.29%	-3.79%
2007	1.82%	18.97%	3.56%	0.00%	4.93%	0.00%	-92.75%	308.15%	3.85%
2008	-15.14%	-22.70%	-11.08%	0.00%	-4.05%	-100.00%	150.77%	182.82%	-10.07%
2009	-9.14%	-32.95%	5.78%	0.00%	3.90%	0.00%	32.52%	-75.34%	-13.09%
2010	-10.17%	28.85%	-15.17%	0.00%	-20.47%	0.00%	-83.33%	138.92%	-7.62%
5 Yr. Avg.	-1.39%	-13.42%	-1.21%	0.00%	2.60%	-20.00%	38.29%	-484.98%	0.18%
10 Yr. Avg.	-0.32%	-2.98%	4.63%	0.00%	9.20%	-26.62%	196.94%	-331.86%	-0.11%

Five year average is from years 2004 through 2008.

Ten year average is from years 1999 through 2008.

Antelope Valley District Percent of Total Sales by Type of Use (2010)



California Water Service Company - Antelope Valley District
Water Supply and Demand Analysis and Projections
Percentage of Total Sales

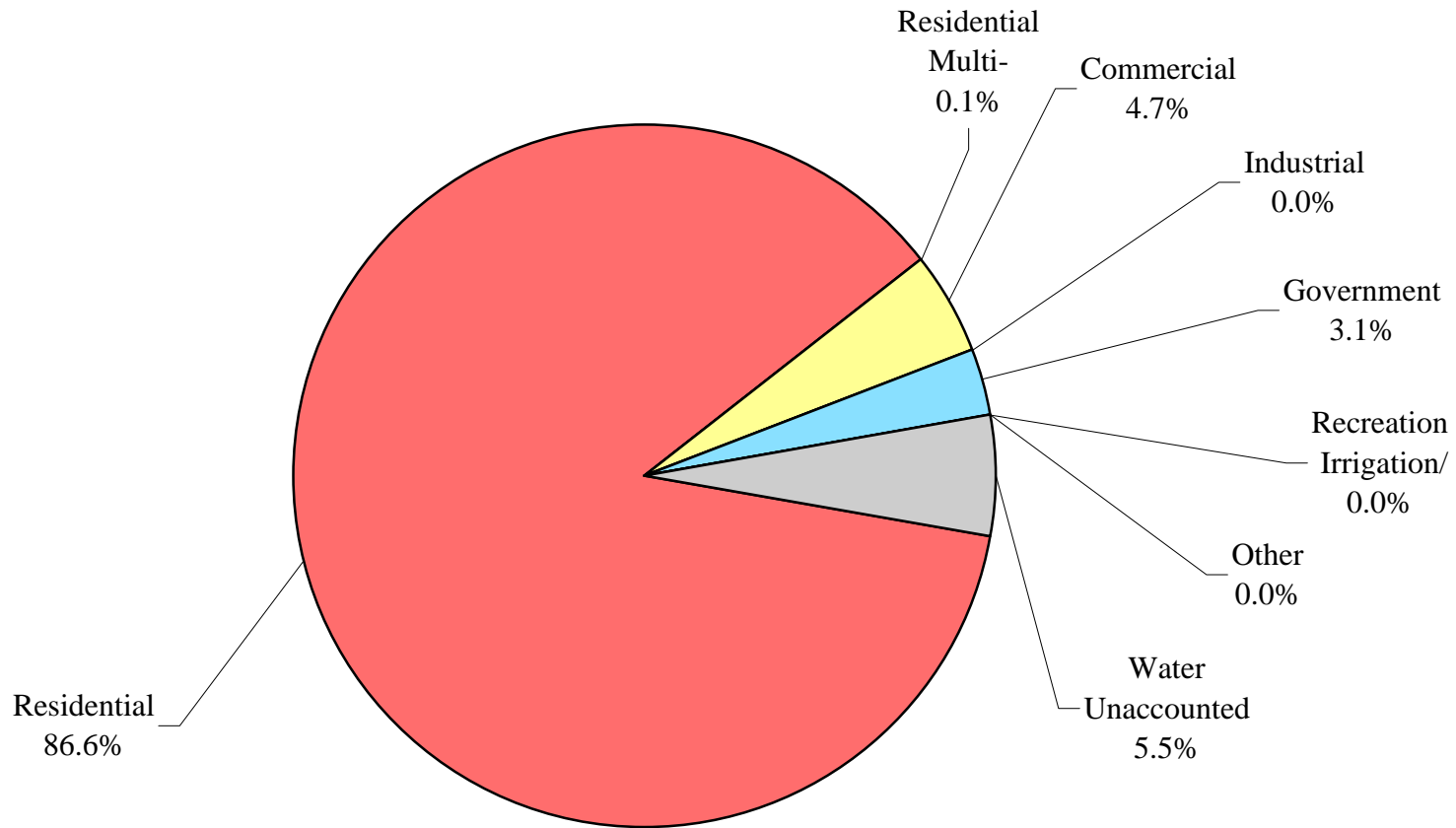
Year	Residential	Multi-Residential	Commercial	Industrial	Government	Irrigation/Recreation	Other	Percent Total
1992	94.65%	0.21%	3.54%	0.00%	0.97%	0.60%	0.02%	100.00%
1993	93.27%	0.37%	3.79%	0.00%	1.83%	0.47%	0.26%	100.00%
1994	93.60%	0.40%	3.60%	0.00%	1.96%	0.34%	0.10%	100.00%
1995	93.51%	0.45%	3.97%	0.00%	1.79%	0.27%	0.02%	100.00%
1996	93.39%	0.41%	4.12%	0.00%	1.79%	0.28%	0.00%	100.00%
1997	94.12%	0.44%	3.68%	0.00%	1.55%	0.20%	0.01%	100.00%
1998	93.82%	0.50%	3.80%	0.00%	1.44%	0.45%	0.00%	100.00%
1999	94.56%	0.34%	3.16%	0.00%	1.80%	0.13%	0.01%	100.00%
2000	92.88%	0.39%	3.45%	0.00%	2.99%	0.22%	0.07%	100.00%
2001	92.72%	0.70%	3.76%	0.00%	2.61%	0.15%	0.06%	100.00%
2002	93.13%	0.48%	3.30%	0.00%	2.75%	0.01%	0.33%	100.00%
2003	92.39%	0.36%	4.48%	0.00%	2.65%	0.00%	0.12%	100.00%
2004	93.70%	0.16%	3.92%	0.00%	2.16%	0.00%	0.06%	100.00%
2005	92.41%	0.19%	4.47%	0.00%	2.73%	0.00%	0.19%	100.00%
2006	92.62%	0.14%	4.30%	0.00%	2.78%	0.00%	0.16%	100.00%
2007	92.46%	0.16%	4.37%	0.00%	2.86%	0.15%	0.01%	100.00%
2008	92.05%	0.15%	4.56%	0.00%	3.21%	0.00%	0.03%	100.00%
2009	90.97%	0.11%	5.24%	0.00%	3.63%	0.00%	0.05%	100.00%
2010	91.61%	0.16%	4.99%	0.00%	3.24%	0.00%	0.01%	100.00%
5 Yr. Avg.	92.65%	0.16%	4.32%	0.00%	2.75%	0.03%	0.09%	100.00%
10 Yr. Avg.	92.89%	0.31%	3.98%	0.00%	2.65%	0.06%	0.10%	100.00%

Five year average is from years 2004 through 2008.

Ten year average is from years 1999 through 2008.

Antelope Valley District

Percent of Total Demand by Type of Use (2010)



California Water Service Company - Antelope Valley District
Water Supply and Demand Analysis and Projections
Percentage of Total Demand

Worksheet 9

Year	Residential	Multi-Residential	Commercial	Industrial	Government	Irrigation/Recreation	Other	Unaccounted Water	Percent Total
1992	89.62%	0.20%	3.36%	0.00%	0.91%	0.57%	0.02%	5.32%	100.00%
1993	87.73%	0.35%	3.56%	0.00%	1.72%	0.44%	0.25%	5.94%	100.00%
1994	85.62%	0.36%	3.29%	0.00%	1.79%	0.31%	0.09%	8.53%	100.00%
1995	85.94%	0.42%	3.65%	0.00%	1.64%	0.25%	0.02%	8.09%	100.00%
1996	84.71%	0.37%	3.74%	0.00%	1.63%	0.25%	0.00%	9.29%	100.00%
1997	85.44%	0.40%	3.34%	0.00%	1.40%	0.18%	0.01%	9.22%	100.00%
1998	86.42%	0.46%	3.50%	0.00%	1.32%	0.41%	0.00%	7.88%	100.00%
1999	87.41%	0.32%	2.92%	0.00%	1.66%	0.12%	0.01%	7.56%	100.00%
2000	89.27%	0.37%	3.31%	0.00%	2.88%	0.21%	0.07%	3.89%	100.00%
2001	87.58%	0.66%	3.55%	0.00%	2.47%	0.14%	0.06%	5.55%	100.00%
2002	90.54%	0.47%	3.21%	0.00%	2.67%	0.01%	0.32%	2.78%	100.00%
2003	92.63%	0.36%	4.49%	0.00%	2.66%	0.00%	0.12%	-0.27%	100.00%
2004	87.65%	0.15%	3.67%	0.00%	2.02%	0.00%	0.06%	6.45%	100.00%
2005	83.01%	0.17%	4.02%	0.00%	2.46%	0.00%	0.17%	10.18%	100.00%
2006	92.06%	0.14%	4.28%	0.00%	2.76%	0.00%	0.16%	0.60%	100.00%
2007	90.26%	0.16%	4.26%	0.00%	2.79%	0.14%	0.01%	2.38%	100.00%
2008	85.17%	0.14%	4.22%	0.00%	2.97%	0.00%	0.03%	7.47%	100.00%
2009	89.04%	0.11%	5.13%	0.00%	3.56%	0.00%	0.05%	2.12%	100.00%
2010	86.59%	0.15%	4.71%	0.00%	3.06%	0.00%	0.01%	5.48%	100.00%
5 Yr. Avg.	87.63%	0.15%	4.09%	0.00%	2.60%	0.03%	0.09%	5.42%	100.00%
10 Yr. Avg.	88.56%	0.29%	3.79%	0.00%	2.53%	0.06%	0.10%	4.66%	100.00%

Five year average is from years 2004 through 2008.

Ten year average is from years 1999 through 2008.

**California Water Service Company - Antelope Valley District
Water Supply and Demand Analysis and Projections**

2000's Projections

Scenario #1: Based on Maintaining Growth at the Low High Average Annual Growth and Low Average High Demand per Service for each Customer Class.

Summary of Historical Growth Rate from Worksheet 2			
Customer Type	10 Yr. Avg. Historical Growth Rate	Estimated Growth Rate Selected	Notes
Single Family Residential	0.82%	0.61%	
Multi Family Residential		0.00%	
Commercial	1.11%	0.79%	
Industrial			
Government	4.10%	0.95%	
Irrigation/Recreation			
Other	18.33%	#DIV/0!	
Overall	0.80%	0.62%	

Summary of Lowest Demand per Service from Worksheets 5 and 6										
Demand/Serv. Units	Multi-Residential			Commercial	Industrial	Government	Reclaimed	Total Other	Unaccounted Total Serv.	Combined Demand/Serv.
	Residential	(service)	(unit)							
Gal/Service/Yr	228,313	58,348	20,593	393,951	0	746,494	0	0	0	245,452
AF/Service/Yr	0.701	0.179	0.063	1.209	0.000	2.291	0.000	0.000	0.000	0.753
Gal/Service/Day	626	160	56	1,079	0	2,045	0	0	0	672

California Water Service Company - Antelope Valley District
Water Supply and Demand Analysis and Projections

30-year projection Summary

Scenario #1: Based on Maintaining Growth at the Low High Average Annual Growth and Low Average High Demand per Service for each Customer Class.

Customer Type	Projected Services 2010	Projected Services 2015	Projected Services 2020	Projected Services 2025	Projected Services 2030	Projected Services 2035	Projected Services 2040	Services projected to be added from 2010 - 2040
Single Family Residential	1,306	1,346	1,388	1,431	1,475	1,521	1,568	262
Multi Family Residential	6	6	6	6	6	6	6	0
Commercial	38	40	41	43	44	46	48	10
Industrial	0	0	0	0	0	0	0	0
Government	14	15	15	16	17	18	19	5
Irrigation/Recreation	0	0	0	0	0	0	0	0
Other	0	0	0	0	0	0	0	0
Total	1,364	1,406	1,450	1,495	1,542	1,591	1,641	277

Customer Type	Projected Demand 2010 (ccf)	Projected Demand 2015 (ccf)	Projected Demand 2020 (ccf)	Projected Demand 2025 (ccf)	Projected Demand 2030 (ccf)	Projected Demand 2035 (ccf)	Projected Demand 2040 (ccf)	Projected demand to be added from 2010 - 2040 (ccf)
Single Family Residential	398,525	410,558	422,963	435,751	448,935	462,526	476,539	78,014
Multi Family Residential	468	468	468	468	468	468	468	0
Commercial	19,925	21,272	22,731	24,312	26,024	27,876	29,881	9,956
Industrial	0	0	0	0	0	0	0	0
Government	13,117	13,896	14,731	15,629	16,594	17,631	18,746	5,629
Irrigation/Recreation	0	0	0	0	0	0	0	0
Other	0	0	0	0	0	0	0	0
Unaccounted	26,866	27,715	28,594	29,503	30,444	31,418	32,427	5,560
Total	458,901	473,909	489,488	505,664	522,465	539,920	558,061	99,160

Customer Type	Projected Demand 2010 (AF)	Projected Demand 2015 (AF)	Projected Demand 2020 (AF)	Projected Demand 2025 (AF)	Projected Demand 2030 (AF)	Projected Demand 2035 (AF)	Projected Demand 2040 (AF)	Projected demand to be added from 2010 - 2040 (AF)
Single Family Residential	915	943	971	1,000	1,031	1,062	1,094	179
Multi Family Residential	1	1	1	1	1	1	1	0
Commercial	46	49	52	56	60	64	69	23
Industrial	0	0	0	0	0	0	0	0
Government	30	32	34	36	38	40	43	13
Irrigation/Recreation	0	0	0	0	0	0	0	0
Other	0	0	0	0	0	0	0	0
Unaccounted	62	64	66	68	70	72	74	13
Total	1,053	1,088	1,124	1,161	1,199	1,239	1,281	228

**California Water Service Company - Antelope Valley District
Water Supply and Demand Analysis and Projections**

2000's Projections

Scenario #1: Based on Maintaining Growth at the Low High Average Annual Growth and Low Average High Demand per Service for each Customer Class.

Customer Type	Actual Services 2001	Actual Services 2002	Actual Services 2003	Actual Services 2004	Actual Services 2005	Actual Services 2006	Actual Services 2007	Actual Services 2008	Actual Services 2009	Projected Services 2010
Resident	1,213	1,207	1,186	1,272	1,291	1,305	1,319	1,308	1,298	1,306
Multi- Residential	10	7	6	6	6	6	6	6	6	6
Commercial	32	33	38	39	38	37	36	37	38	38
Industrial	0	0	0	0	0	0	0	0	0	0
Government	12	12	11	12	12	11	10	13	14	14
Irrigation/Recreation	2	1	0	0	0	0	2	0	0	0
Other	1	1	1	2	3	3	1	1	0	0
Total	292	287	287	277	288	1,359	1,369	1,364	1,356	1,364

Customer Type	Demand 2001(ccf)	Demand 2002(ccf)	Demand 2003(ccf)	Demand 2004(ccf)	Demand 2005(ccf)	Demand 2006(ccf)	Demand 2007(ccf)	Demand 2008(ccf)	Demand 2009(ccf)	Demand 2010(ccf)
Resident	362,388	361,756	359,938	389,629	394,997	398,190	401,723	398,071	396,161	398,525
Multi- Residential	589	546	468	468	468	468	468	468	468	468
Commercial	15,481	15,713	18,841	19,073	18,841	18,865	18,633	19,437	19,668	19,925
Industrial	0	0	0	0	0	0	0	0	0	0
Government	10,680	10,680	10,529	10,680	10,680	10,529	10,378	12,817	12,968	13,117
Irrigation/Recreation	0	0	0	0	0	0	0	0	0	0
Other	2	2	2	0	4	6	2	2	0	0
Unaccounted	4,071	4,002	4,002	3,867	4,015	26,789	26,982	26,744	26,700	26,866
Total	393,211	392,699	393,780	423,717	429,006	454,847	458,187	457,539	455,966	458,901

Customer Type	Demand 2001(AF)	Demand 2002(AF)	Demand 2003(AF)	Demand 2004(AF)	Demand 2005(AF)	Demand 2006(AF)	Demand 2007(AF)	Demand 2008(AF)	Demand 2009(AF)	Demand 2010(AF)
Resident	832	830	826	894	907	914	922	914	909	915
Multi- Residential	1	1	1	1	1	1	1	1	1	1
Commercial	36	36	43	44	43	43	43	45	45	46
Industrial	0	0	0	0	0	0	0	0	0	0
Government	25	25	24	25	25	24	24	29	30	30
Irrigation/Recreation	0	0	0	0	0	0	0	0	0	0
Other	0	0	0	0	0	0	0	0	0	0
Unaccounted	9	9	9	9	9	61	62	61	61	62
Total	903	902	904	973	985	1,044	1,052	1,050	1,047	1,053

**California Water Service Company - Antelope Valley District
Water Supply and Demand Analysis and Projections**

2010's Projections

Scenario #1: Based on Maintaining Growth at the

Low
 High

Average Annual Growth and

Low
 Average
 High

Demand per Service for each Customer Class.

Customer Type	Projected Services 2011	Projected Services 2012	Projected Services 2013	Projected Services 2014	Projected Services 2015	Projected Services 2016	Projected Services 2017	Projected Services 2018	Projected Services 2019	Projected Services 2020
Resident	1,314	1,322	1,330	1,338	1,346	1,354	1,363	1,371	1,379	1,388
Multi- Residential	6	6	6	6	6	6	6	6	6	6
Commercial	38	39	39	39	40	40	40	40	41	41
Industrial	0	0	0	0	0	0	0	0	0	0
Government	14	14	14	15	15	15	15	15	15	15
Irrigation/Recreation	0	0	0	0	0	0	0	0	0	0
Other	0	0	0	0	0	0	0	0	0	0
Total	1,373	1,381	1,389	1,398	1,406	1,415	1,424	1,432	1,441	1,450

Customer Type	Demand 2011(ccf)	Demand 2012(ccf)	Demand 2013(ccf)	Demand 2014(ccf)	Demand 2015(ccf)	Demand 2016(ccf)	Demand 2017(ccf)	Demand 2018(ccf)	Demand 2019(ccf)	Demand 2020(ccf)
Resident	400,902	403,294	405,701	408,122	410,558	413,009	415,475	417,956	420,452	422,963
Multi- Residential	468	468	468	468	468	468	468	468	468	468
Commercial	20,186	20,451	20,720	20,994	21,272	21,554	21,841	22,133	22,430	22,731
Industrial	0	0	0	0	0	0	0	0	0	0
Government	13,268	13,422	13,578	13,735	13,896	14,058	14,223	14,390	14,559	14,731
Irrigation/Recreation	0	0	0	0	0	0	0	0	0	0
Other	0	0	0	0	0	0	0	0	0	0
Unaccounted	27,034	27,203	27,372	27,543	27,715	27,889	28,063	28,239	28,416	28,594
Total	461,858	464,837	467,839	470,863	473,909	476,978	480,071	483,186	486,325	489,488

Customer Type	Demand 2011(AF)	Demand 2012(AF)	Demand 2013(AF)	Demand 2014(AF)	Demand 2015(AF)	Demand 2016(AF)	Demand 2017(AF)	Demand 2018(AF)	Demand 2019(AF)	Demand 2020(AF)
Resident	920	926	931	937	943	948	954	960	965	971
Multi- Residential	1	1	1	1	1	1	1	1	1	1
Commercial	46	47	48	48	49	49	50	51	51	52
Industrial	0	0	0	0	0	0	0	0	0	0
Government	30	31	31	32	32	32	33	33	33	34
Irrigation/Recreation	0	0	0	0	0	0	0	0	0	0
Other	0	0	0	0	0	0	0	0	0	0
Unaccounted	62	62	63	63	64	64	64	65	65	66
Total	1,060	1,067	1,074	1,081	1,088	1,095	1,102	1,109	1,116	1,124

**California Water Service Company - Antelope Valley District
Water Supply and Demand Analysis and Projections**

2020's Projections

Scenario #1: Based on Maintaining Growth at the

- Low
- High

Average Annual Growth and

- Low
- Average
- High

Demand per Service for each Customer Class.

Customer Type	Projected Services 2021	Projected Services 2022	Projected Services 2023	Projected Services 2024	Projected Services 2025	Projected Services 2026	Projected Services 2027	Projected Services 2028	Projected Services 2029	Projected Services 2030
Resident	1,396	1,405	1,413	1,422	1,431	1,439	1,448	1,457	1,466	1,475
Multi- Residential	6	6	6	6	6	6	6	6	6	6
Commercial	41	42	42	42	43	43	43	44	44	44
Industrial	0	0	0	0	0	0	0	0	0	0
Government	16	16	16	16	16	16	16	17	17	17
Irrigation/Recreation	0	0	0	0	0	0	0	0	0	0
Other	0	0	0	0	0	0	0	0	0	0
Total	1,459	1,468	1,477	1,486	1,495	1,505	1,514	1,523	1,533	1,542

Customer Type	Demand 2021(ccf)	Demand 2022(ccf)	Demand 2023(ccf)	Demand 2024(ccf)	Demand 2025(ccf)	Demand 2026(ccf)	Demand 2027(ccf)	Demand 2028(ccf)	Demand 2029(ccf)	Demand 2030(ccf)
Resident	425,490	428,032	430,589	433,163	435,751	438,356	440,977	443,613	446,266	448,935
Multi- Residential	468	468	468	468	468	468	468	468	468	468
Commercial	23,037	23,348	23,665	23,986	24,312	24,644	24,980	25,323	25,670	26,024
Industrial	0	0	0	0	0	0	0	0	0	0
Government	14,906	15,083	15,262	15,445	15,629	15,817	16,007	16,200	16,396	16,594
Irrigation/Recreation	0	0	0	0	0	0	0	0	0	0
Other	0	0	0	0	0	0	0	0	0	0
Unaccounted	28,773	28,954	29,136	29,319	29,503	29,689	29,875	30,064	30,253	30,444
Total	492,674	495,885	499,120	502,380	505,664	508,973	512,308	515,668	519,053	522,465

Customer Type	Demand 2021(AF)	Demand 2022(AF)	Demand 2023(AF)	Demand 2024(AF)	Demand 2025(AF)	Demand 2026(AF)	Demand 2027(AF)	Demand 2028(AF)	Demand 2029(AF)	Demand 2030(AF)
Resident	977	983	989	994	1,000	1,006	1,012	1,018	1,024	1,031
Multi- Residential	1	1	1	1	1	1	1	1	1	1
Commercial	53	54	54	55	56	57	57	58	59	60
Industrial	0	0	0	0	0	0	0	0	0	0
Government	34	35	35	35	36	36	37	37	38	38
Irrigation/Recreation	0	0	0	0	0	0	0	0	0	0
Other	0	0	0	0	0	0	0	0	0	0
Unaccounted	66	66	67	67	68	68	69	69	69	70
Total	1,131	1,138	1,146	1,153	1,161	1,168	1,176	1,184	1,192	1,199

**California Water Service Company - Antelope Valley District
Water Supply and Demand Analysis and Projections**

2030's Projections

Scenario #1: Based on Maintaining Growth at the Low High Average Annual Growth and Low Average High Demand per Service for each Customer Class.

Customer Type	Projected Services 2031	Projected Services 2032	Projected Services 2033	Projected Services 2034	Projected Services 2035	Projected Services 2036	Projected Services 2037	Projected Services 2038	Projected Services 2039	Projected Services 2040
Resident	1,484	1,493	1,502	1,511	1,521	1,530	1,539	1,549	1,558	1,568
Multi- Residential	6	6	6	6	6	6	6	6	6	6
Commercial	45	45	46	46	46	47	47	48	48	48
Industrial	0	0	0	0	0	0	0	0	0	0
Government	17	17	17	18	18	18	18	18	19	19
Irrigation/Recreation	0	0	0	0	0	0	0	0	0	0
Other	0	0	0	0	0	0	0	0	0	0
Total	1,552	1,561	1,571	1,581	1,591	1,601	1,611	1,621	1,631	1,641

Customer Type	Demand 2031(ccf)	Demand 2032(ccf)	Demand 2033(ccf)	Demand 2034(ccf)	Demand 2035(ccf)	Demand 2036(ccf)	Demand 2037(ccf)	Demand 2038(ccf)	Demand 2039(ccf)	Demand 2040(ccf)
Resident	451,620	454,322	457,040	459,775	462,526	465,295	468,080	470,883	473,702	476,539
Multi- Residential	468	468	468	468	468	468	468	468	468	468
Commercial	26,383	26,747	27,118	27,494	27,876	28,265	28,659	29,060	29,467	29,881
Industrial	0	0	0	0	0	0	0	0	0	0
Government	16,796	17,000	17,207	17,418	17,631	17,848	18,067	18,290	18,517	18,746
Irrigation/Recreation	0	0	0	0	0	0	0	0	0	0
Other	0	0	0	0	0	0	0	0	0	0
Unaccounted	30,636	30,829	31,024	31,220	31,418	31,617	31,817	32,019	32,222	32,427
Total	525,902	529,367	532,857	536,375	539,920	543,492	547,092	550,720	554,376	558,061

Customer Type	Demand 2031(AF)	Demand 2032(AF)	Demand 2033(AF)	Demand 2034(AF)	Demand 2035(AF)	Demand 2036(AF)	Demand 2037(AF)	Demand 2038(AF)	Demand 2039(AF)	Demand 2040(AF)
Resident	1,037	1,043	1,049	1,056	1,062	1,068	1,075	1,081	1,087	1,094
Multi- Residential	1	1	1	1	1	1	1	1	1	1
Commercial	61	61	62	63	64	65	66	67	68	69
Industrial	0	0	0	0	0	0	0	0	0	0
Government	39	39	40	40	40	41	41	42	43	43
Irrigation/Recreation	0	0	0	0	0	0	0	0	0	0
Other	0	0	0	0	0	0	0	0	0	0
Unaccounted	70	71	71	72	72	73	73	74	74	74
Total	1,207	1,215	1,223	1,231	1,239	1,248	1,256	1,264	1,273	1,281

**California Water Service Company -Antelope Valley District
Water Supply and Demand Analysis and Projections**

2000's Projections

Scenario #1: Based on Maintaining Growth at the Low Average Annual Growth and Average Demand per Service for each Customer Class.
 High High

Summary of Historical Growth Rate from Worksheet 2			
Customer Type	10 Yr. Avg. Historical Growth Rate	Estimated Growth Rate Selected	Notes
Single Family Residential	0.82%	0.61%	
Multi Family Residential		0.00%	
Commercial	1.11%	0.79%	
Industrial			
Government	4.10%	0.95%	
Irrigation/Recreation			
Other	18.33%		
Overall	0.80%	0.62%	

Summary of Lowest Demand per Service from Worksheets 5 and 6										
Demand/Serv. Units	Multi-Residential			Commercial	Industrial	Government	Reclaimed	Total Other	Unaccounted Total Serv.	Combined Demand/Serv.
	Residential	(service)	(unit)							
Gal/Service/Yr	276,853	158,010	41,193	421,289	0	760,070	188,349	201,122	17,328	301,424
AF/Service/Yr	0.850	0.485	0.126	1.293	0.000	2.333	0.578	0.617	0.053	0.925
Gal/Service/Day	759	433	113	1,154	0	2,082	516	551	47	826

**California Water Service Company - Antelope Valley District
Water Supply and Demand Analysis and Projections**

30-year projection Summary

Scenario #1: Based on Maintaining Growth at the Low High Average Annual Growth and Low High Demand per Service for each Customer Class.

Customer Type	Projected Services 2010	Projected Services 2015	Projected Services 2020	Projected Services 2025	Projected Services 2030	Projected Services 2035	Projected Services 2040	Services projected to be added from 2010 - 2040
Single Family Residential	1,306	1,346	1,388	1,431	1,475	1,521	1,568	262
Multi Family Residential	6	6	6	6	6	6	6	0
Commercial	38	40	41	43	44	46	48	10
Industrial	0	0	0	0	0	0	0	0
Government	14	15	15	16	17	18	19	5
Irrigation/Recreation	0	0	0	0	0	0	0	0
Other	0	0	0	0	0	0	0	0
Total	1,364	1,406	1,450	1,495	1,542	1,591	1,641	277

Customer Type	Projected Demand 2010 (ccf)	Projected Demand 2015 (ccf)	Projected Demand 2020 (ccf)	Projected Demand 2025 (ccf)	Projected Demand 2030 (ccf)	Projected Demand 2035 (ccf)	Projected Demand 2040 (ccf)	Projected demand to be added from 2010 - 2040 (ccf)
Single Family Residential	478,511	492,970	507,876	523,242	539,084	555,417	572,256	93,745
Multi Family Residential	808	808	808	808	808	808	808	0
Commercial	23,793	25,312	26,959	28,744	30,677	32,770	35,035	11,242
Industrial	0	0	0	0	0	0	0	0
Government	17,396	18,416	19,512	20,690	21,956	23,317	24,781	7,385
Irrigation/Recreation	0	0	0	0	0	0	0	0
Other	0	0	0	0	0	0	0	0
Unaccounted	52,406	54,033	55,716	57,458	59,261	61,127	63,059	10,653
Total	572,914	591,539	610,871	630,942	651,786	673,439	695,939	123,025

Customer Type	Projected Demand 2010 (AF)	Projected Demand 2015 (AF)	Projected Demand 2020 (AF)	Projected Demand 2025 (AF)	Projected Demand 2030 (AF)	Projected Demand 2035 (AF)	Projected Demand 2040 (AF)	Projected demand to be added from 2010 - 2040 (AF)
Single Family Residential	1,099	1,132	1,166	1,201	1,238	1,275	1,314	215
Multi Family Residential	2	2	2	2	2	2	2	0
Commercial	55	58	62	66	70	75	80	26
Industrial	0	0	0	0	0	0	0	0
Government	40	42	45	47	50	54	57	17
Irrigation/Recreation	0	0	0	0	0	0	0	0
Other	0	0	0	0	0	0	0	0
Unaccounted	120	124	128	132	136	140	145	24
Total	1,315	1,358	1,402	1,448	1,496	1,546	1,598	282

**California Water Service Company - Antelope Valley District
Water Supply and Demand Analysis and Projections**

2000's Projections

Scenario #1: Based on Maintaining Growth at the Low High Average Annual Growth and Low Average High Demand per Service for each Customer Class.

Customer Type	Actual Services 2001	Actual Services 2002	Actual Services 2003	Actual Services 2004	Actual Services 2005	Actual Services 2006	Actual Services 2007	Actual Services 2008	Actual Services 2009	Projected Services 2010
Resident	1,213	1,207	1,186	1,272	1,291	1,305	1,319	1,308	1,298	1,306
Multi- Residential	10	7	6	6	6	6	6	6	6	6
Commercial	32	33	38	39	38	37	36	37	38	38
Industrial	0	0	0	0	0	0	0	0	0	0
Government	12	12	11	12	12	11	10	13	14	14
Irrigation/Recreation	2	1	0	0	0	0	2	0	0	0
Other	1	1	1	2	3	3	1	1	0	0
Total	292	287	287	277	288	1,359	1,369	1,364	1,356	1,364

Customer Type	Demand 2001(ccf)	Demand 2002(ccf)	Demand 2003(ccf)	Demand 2004(ccf)	Demand 2005(ccf)	Demand 2006(ccf)	Demand 2007(ccf)	Demand 2008(ccf)	Demand 2009(ccf)	Demand 2010(ccf)
Resident	436,077	435,206	432,610	467,569	474,105	478,071	482,407	478,157	475,672	478,511
Multi- Residential	1,017	943	808	808	808	808	808	808	808	808
Commercial	18,639	18,988	22,619	22,968	22,619	22,653	22,304	23,155	23,504	23,793
Industrial	0	0	0	0	0	0	0	0	0	0
Government	14,169	14,169	13,882	14,169	14,169	13,882	13,594	16,913	17,200	17,396
Irrigation/Recreation	0	0	0	0	0	0	0	0	0	0
Other	185	185	185	0	371	556	185	185	0	0
Unaccounted	7,766	7,634	7,634	7,376	7,660	52,178	52,561	52,106	52,087	52,406
Total	477,854	477,125	477,739	512,891	519,733	568,148	571,860	571,325	569,271	572,914

Customer Type	Demand 2001(AF)	Demand 2002(AF)	Demand 2003(AF)	Demand 2004(AF)	Demand 2005(AF)	Demand 2006(AF)	Demand 2007(AF)	Demand 2008(AF)	Demand 2009(AF)	Demand 2010(AF)
Resident	1,001	999	993	1,073	1,088	1,098	1,107	1,098	1,092	1,099
Multi- Residential	2	2	2	2	2	2	2	2	2	2
Commercial	43	44	52	53	52	52	51	53	54	55
Industrial	0	0	0	0	0	0	0	0	0	0
Government	33	33	32	33	33	32	31	39	39	40
Irrigation/Recreation	0	0	0	0	0	0	0	0	0	0
Other	0	0	0	0	1	1	0	0	0	0
Unaccounted	18	18	18	17	18	120	121	120	120	120
Total	1,097	1,095	1,097	1,177	1,193	1,304	1,313	1,312	1,307	1,315

California Water Service Company - Antelope Valley District

Water Supply and Demand Analysis and Projections

2010's Projections

Scenario #1: Based on Maintaining Growth at the Low High Average Annual Growth and Low Average High Demand per Service for each Customer Class.

Customer Type	Projected Services 2011	Projected Services 2012	Projected Services 2013	Projected Services 2014	Projected Services 2015	Projected Services 2016	Projected Services 2017	Projected Services 2018	Projected Services 2019	Projected Services 2020
Resident	1,314	1,322	1,330	1,338	1,346	1,354	1,363	1,371	1,379	1,388
Multi- Residential	6	6	6	6	6	6	6	6	6	6
Commercial	38	39	39	39	40	40	40	40	41	41
Industrial	0	0	0	0	0	0	0	0	0	0
Government	14	14	14	15	15	15	15	15	15	15
Irrigation/Recreation	0	0	0	0	0	0	0	0	0	0
Other	0	0	0	0	0	0	0	0	0	0
Total	1,373	1,381	1,389	1,398	1,406	1,415	1,424	1,432	1,441	1,450

Customer Type	Demand 2011(ccf)	Demand 2012(ccf)	Demand 2013(ccf)	Demand 2014(ccf)	Demand 2015(ccf)	Demand 2016(ccf)	Demand 2017(ccf)	Demand 2018(ccf)	Demand 2019(ccf)	Demand 2020(ccf)
Resident	481,368	484,242	487,134	490,043	492,970	495,915	498,878	501,859	504,858	507,876
Multi- Residential	808	808	808	808	808	808	808	808	808	808
Commercial	24,087	24,386	24,690	24,998	25,312	25,631	25,955	26,284	26,619	26,959
Industrial	0	0	0	0	0	0	0	0	0	0
Government	17,594	17,795	17,999	18,206	18,416	18,629	18,845	19,064	19,286	19,512
Irrigation/Recreation	0	0	0	0	0	0	0	0	0	0
Other	0	0	0	0	0	0	0	0	0	0
Unaccounted	52,727	53,050	53,376	53,703	54,033	54,365	54,699	55,036	55,375	55,716
Total	576,584	580,281	584,006	587,759	591,539	595,348	599,185	603,052	606,947	610,871

Customer Type	Demand 2011(AF)	Demand 2012(AF)	Demand 2013(AF)	Demand 2014(AF)	Demand 2015(AF)	Demand 2016(AF)	Demand 2017(AF)	Demand 2018(AF)	Demand 2019(AF)	Demand 2020(AF)
Resident	1,105	1,112	1,118	1,125	1,132	1,138	1,145	1,152	1,159	1,166
Multi- Residential	2	2	2	2	2	2	2	2	2	2
Commercial	55	56	57	57	58	59	60	60	61	62
Industrial	0	0	0	0	0	0	0	0	0	0
Government	40	41	41	42	42	43	43	44	44	45
Irrigation/Recreation	0	0	0	0	0	0	0	0	0	0
Other	0	0	0	0	0	0	0	0	0	0
Unaccounted	121	122	123	123	124	125	126	126	127	128
Total	1,324	1,332	1,341	1,349	1,358	1,367	1,376	1,384	1,393	1,402

**California Water Service Company - Antelope Valley District
Water Supply and Demand Analysis and Projections**

2020's Projections

Scenario #1: Based on Maintaining Growth at the Low High Average Annual Growth and Average High Demand per Service for each Customer Class.

Customer Type	Projected Services 2021	Projected Services 2022	Projected Services 2023	Projected Services 2024	Projected Services 2025	Projected Services 2026	Projected Services 2027	Projected Services 2028	Projected Services 2029	Projected Services 2030
Resident	1,396	1,405	1,413	1,422	1,431	1,439	1,448	1,457	1,466	1,475
Multi- Residential	6	6	6	6	6	6	6	6	6	6
Commercial	41	42	42	42	43	43	43	44	44	44
Industrial	0	0	0	0	0	0	0	0	0	0
Government	16	16	16	16	16	16	16	17	17	17
Irrigation/Recreation	0	0	0	0	0	0	0	0	0	0
Other	0	0	0	0	0	0	0	0	0	0
Total	1,459	1,468	1,477	1,486	1,495	1,505	1,514	1,523	1,533	1,542

45

Customer Type	Demand 2021(ccf)	Demand 2022(ccf)	Demand 2023(ccf)	Demand 2024(ccf)	Demand 2025(ccf)	Demand 2026(ccf)	Demand 2027(ccf)	Demand 2028(ccf)	Demand 2029(ccf)	Demand 2030(ccf)
Resident	510,912	513,966	517,039	520,131	523,242	526,372	529,521	532,689	535,877	539,084
Multi- Residential	808	808	808	808	808	808	808	808	808	808
Commercial	27,305	27,656	28,013	28,376	28,744	29,119	29,499	29,886	30,278	30,677
Industrial	0	0	0	0	0	0	0	0	0	0
Government	19,741	19,973	20,208	20,447	20,690	20,935	21,185	21,438	21,695	21,956
Irrigation/Recreation	0	0	0	0	0	0	0	0	0	0
Other	0	0	0	0	0	0	0	0	0	0
Unaccounted	56,060	56,406	56,754	57,105	57,458	57,814	58,172	58,532	58,895	59,261
Total	614,825	618,809	622,823	626,867	630,942	635,048	639,185	643,353	647,553	651,786

Customer Type	Demand 2021(AF)	Demand 2022(AF)	Demand 2023(AF)	Demand 2024(AF)	Demand 2025(AF)	Demand 2026(AF)	Demand 2027(AF)	Demand 2028(AF)	Demand 2029(AF)	Demand 2030(AF)
Resident	1,173	1,180	1,187	1,194	1,201	1,208	1,216	1,223	1,230	1,238
Multi- Residential	2	2	2	2	2	2	2	2	2	2
Commercial	63	63	64	65	66	67	68	69	70	70
Industrial	0	0	0	0	0	0	0	0	0	0
Government	45	46	46	47	47	48	49	49	50	50
Irrigation/Recreation	0	0	0	0	0	0	0	0	0	0
Other	0	0	0	0	0	0	0	0	0	0
Unaccounted	129	129	130	131	132	133	134	134	135	136
Total	1,411	1,421	1,430	1,439	1,448	1,458	1,467	1,477	1,487	1,496

**California Water Service Company - Antelope Valley District
Water Supply and Demand Analysis and Projections**

2030's Projections

Scenario #1: Based on Maintaining Growth at the Low High Average Annual Growth and Low Average High Demand per Service for each Customer Class.

Customer Type	Projected Services 2031	Projected Services 2032	Projected Services 2033	Projected Services 2034	Projected Services 2035	Projected Services 2036	Projected Services 2037	Projected Services 2038	Projected Services 2039	Projected Services 2040
Resident	1,484	1,493	1,502	1,511	1,521	1,530	1,539	1,549	1,558	1,568
Multi- Residential	6	6	6	6	6	6	6	6	6	6
Commercial	45	45	46	46	46	47	47	48	48	48
Industrial	0	0	0	0	0	0	0	0	0	0
Government	17	17	17	18	18	18	18	18	19	19
Irrigation/Recreation	0	0	0	0	0	0	0	0	0	0
Other	0	0	0	0	0	0	0	0	0	0
Total	1,552	1,561	1,571	1,581	1,591	1,601	1,611	1,621	1,631	1,641

Customer Type	Demand 2031(ccf)	Demand 2032(ccf)	Demand 2033(ccf)	Demand 2034(ccf)	Demand 2035(ccf)	Demand 2036(ccf)	Demand 2037(ccf)	Demand 2038(ccf)	Demand 2039(ccf)	Demand 2040(ccf)
Resident	542,311	545,557	548,824	552,110	555,417	558,743	562,090	565,458	568,847	572,256
Multi- Residential	808	808	808	808	808	808	808	808	808	808
Commercial	31,083	31,495	31,913	32,338	32,770	33,209	33,655	34,108	34,568	35,035
Industrial	0	0	0	0	0	0	0	0	0	0
Government	22,220	22,488	22,760	23,037	23,317	23,601	23,890	24,183	24,480	24,781
Irrigation/Recreation	0	0	0	0	0	0	0	0	0	0
Other	0	0	0	0	0	0	0	0	0	0
Unaccounted	59,629	59,999	60,373	60,748	61,127	61,508	61,892	62,278	62,667	63,059
Total	656,050	660,348	664,678	669,042	673,439	677,870	682,335	686,835	691,370	695,939

Customer Type	Demand 2031(AF)	Demand 2032(AF)	Demand 2033(AF)	Demand 2034(AF)	Demand 2035(AF)	Demand 2036(AF)	Demand 2037(AF)	Demand 2038(AF)	Demand 2039(AF)	Demand 2040(AF)
Resident	1,245	1,252	1,260	1,267	1,275	1,283	1,290	1,298	1,306	1,314
Multi- Residential	2	2	2	2	2	2	2	2	2	2
Commercial	71	72	73	74	75	76	77	78	79	80
Industrial	0	0	0	0	0	0	0	0	0	0
Government	51	52	52	53	54	54	55	56	56	57
Irrigation/Recreation	0	0	0	0	0	0	0	0	0	0
Other	0	0	0	0	0	0	0	0	0	0
Unaccounted	137	138	139	139	140	141	142	143	144	145
Total	1,506	1,516	1,526	1,536	1,546	1,556	1,566	1,577	1,587	1,598

**California Water Service Company -Antelope Valley District
Water Supply and Demand Analysis and Projections**

2000's Projections

Scenario #1: Based on Maintaining Growth at the

- Low
 High

Average Annual Growth and

- Low
 Average
 High

Demand per Service for each Customer Class.

Summary of Historical Growth Rate from Worksheet 2			
Customer Type	10 Yr. Avg. Historical Growth Rate	Estimated Growth Rate Selected	Notes
Single Family Residential	0.82%	0.61%	
Multi Family Residential		0.00%	
Commercial	1.11%	0.79%	
Industrial			
Government	4.10%	0.95%	
Irrigation/Recreation			
Other	18.33%		
Overall	0.80%	0.62%	

Summary of Lowest Demand per Service from Worksheets 5 and 6										
Demand/Serv. Units	Multi-Residential			Commercial	Industrial	Government	Reclaimed	Total Other	Unaccounted Total Serv.	Combined Demand/Serv.
	Residential	(service)	(unit)							
Gal/Service/Yr	309,049	281,283	81,538	504,457	0	1,187,159	437,984	1,291,138	32,137	333,429
AF/Service/Yr	0.949	0.864	0.250	1.549	0.000	3.646	1.345	3.965	0.099	1.024
Gal/Service/Day	847	771	223	1,382	0	3,252	1,200	3,537	88	914

**California Water Service Company - Antelope Valley District
Water Supply and Demand Analysis and Projections**

30-year projection Summary

Scenario #1: Based on Maintaining Growth at the Low High Average Annual Growth and Low Average High Demand per Service for each Customer Class.

Customer Type	Projected Services 2010	Projected Services 2015	Projected Services 2020	Projected Services 2025	Projected Services 2030	Projected Services 2035	Projected Services 2040	Services projected to be added from 2010 - 2040
Single Family Residential	1,306	1,346	1,388	1,431	1,475	1,521	1,568	262
Multi Family Residential	6	6	6	6	6	6	6	0
Commercial	38	40	41	43	44	46	48	10
Industrial	0	0	0	0	0	0	0	0
Government	14	15	15	16	17	18	19	5
Irrigation/Recreation	0	0	0	0	0	0	0	0
Other	0	0	0	0	0	0	0	0
Total	1,364	1,406	1,450	1,495	1,542	1,591	1,641	277

Customer Type	Projected Demand 2010 (ccf)	Projected Demand 2015 (ccf)	Projected Demand 2020 (ccf)	Projected Demand 2025 (ccf)	Projected Demand 2030 (ccf)	Projected Demand 2035 (ccf)	Projected Demand 2040 (ccf)	Projected demand to be added from 2010 - 2040 (ccf)
Single Family Residential	532,727	548,875	565,523	582,689	600,388	618,637	637,455	104,728
Multi Family Residential	991	991	991	991	991	991	991	0
Commercial	28,011	29,721	31,577	33,589	35,769	38,129	40,684	12,673
Industrial	0	0	0	0	0	0	0	0
Government	21,287	22,481	23,764	25,142	26,624	28,217	29,931	8,644
Irrigation/Recreation	0	0	0	0	0	0	0	0
Other	0	0	0	0	0	0	0	0
Unaccounted	88,261	90,958	93,748	96,635	99,622	102,714	105,916	17,655
Total	671,276	693,026	715,603	739,046	763,394	788,689	814,977	143,701

Customer Type	Projected Demand 2010 (AF)	Projected Demand 2015 (AF)	Projected Demand 2020 (AF)	Projected Demand 2025 (AF)	Projected Demand 2030 (AF)	Projected Demand 2035 (AF)	Projected Demand 2040 (AF)	Projected demand to be added from 2010 - 2040 (AF)
Single Family Residential	1,223	1,260	1,298	1,338	1,378	1,420	1,463	240
Multi Family Residential	2	2	2	2	2	2	2	0
Commercial	64	68	72	77	82	88	93	29
Industrial	0	0	0	0	0	0	0	0
Government	49	52	55	58	61	65	69	20
Irrigation/Recreation	0	0	0	0	0	0	0	0
Other	0	0	0	0	0	0	0	0
Unaccounted	203	209	215	222	229	236	243	41
Total	1,541	1,591	1,643	1,697	1,753	1,811	1,871	330

**California Water Service Company - Antelope Valley District
Water Supply and Demand Analysis and Projections**

2000's Projections

Scenario #1: Based on Maintaining Growth at the Low Average Annual Growth and Low Demand per Service for each Customer Class.
 High Average High

Customer Type	Actual Services 2001	Actual Services 2002	Actual Services 2003	Actual Services 2004	Actual Services 2005	Actual Services 2006	Actual Services 2007	Actual Services 2008	Actual Services 2009	Projected Services 2010
Resident	1,213	1,207	1,186	1,272	1,291	1,305	1,319	1,308	1,298	1,306
Multi- Residential	10	7	6	6	6	6	6	6	6	6
Commercial	32	33	38	39	38	37	36	37	38	38
Industrial	0	0	0	0	0	0	0	0	0	0
Government	12	12	11	12	12	11	10	13	14	14
Irrigation/Recreation	2	1	0	0	0	0	2	0	0	0
Other	1	1	1	2	3	3	1	1	0	0
Total	292	287	287	277	288	1,359	1,369	1,364	1,356	1,364

Customer Type	Demand 2001(ccf)	Demand 2002(ccf)	Demand 2003(ccf)	Demand 2004(ccf)	Demand 2005(ccf)	Demand 2006(ccf)	Demand 2007(ccf)	Demand 2008(ccf)	Demand 2009(ccf)	Demand 2010(ccf)
Resident	486,464	485,431	482,326	520,290	527,642	532,237	537,182	532,542	529,556	532,727
Multi- Residential	1,247	1,156	991	991	991	991	991	991	991	991
Commercial	22,078	22,547	26,736	27,205	26,736	26,770	26,301	27,216	27,686	28,011
Industrial	0	0	0	0	0	0	0	0	0	0
Government	17,514	17,514	16,999	17,514	17,514	16,999	16,484	20,543	21,058	21,287
Irrigation/Recreation	0	0	0	0	0	0	0	0	0	0
Other	398	398	398	0	797	1,195	398	398	0	0
Unaccounted	13,063	12,840	12,840	12,407	12,884	87,795	88,449	87,727	87,732	88,261
Total	540,764	539,886	540,291	578,406	586,563	665,988	669,806	669,419	667,022	671,276

Customer Type	Demand 2001(AF)	Demand 2002(AF)	Demand 2003(AF)	Demand 2004(AF)	Demand 2005(AF)	Demand 2006(AF)	Demand 2007(AF)	Demand 2008(AF)	Demand 2009(AF)	Demand 2010(AF)
Resident	1,117	1,114	1,107	1,194	1,211	1,222	1,233	1,223	1,216	1,223
Multi- Residential	3	3	2	2	2	2	2	2	2	2
Commercial	51	52	61	62	61	61	60	62	64	64
Industrial	0	0	0	0	0	0	0	0	0	0
Government	40	40	39	40	40	39	38	47	48	49
Irrigation/Recreation	0	0	0	0	0	0	0	0	0	0
Other	1	1	1	0	2	3	1	1	0	0
Unaccounted	30	29	29	28	30	202	203	201	201	203
Total	1,241	1,239	1,240	1,328	1,347	1,529	1,538	1,537	1,531	1,541

**California Water Service Company - Antelope Valley District
Water Supply and Demand Analysis and Projections**

2010's Projections

Scenario #1: Based on Maintaining Growth at the Low Average Annual Growth and Low Demand per Service for each Customer Class.
 High Average High

Customer Type	Projected Services 2011	Projected Services 2012	Projected Services 2013	Projected Services 2014	Projected Services 2015	Projected Services 2016	Projected Services 2017	Projected Services 2018	Projected Services 2019	Projected Services 2020
Resident	1,314	1,322	1,330	1,338	1,346	1,354	1,363	1,371	1,379	1,388
Multi- Residential	6	6	6	6	6	6	6	6	6	6
Commercial	38	39	39	39	40	40	40	40	41	41
Industrial	0	0	0	0	0	0	0	0	0	0
Government	14	14	14	15	15	15	15	15	15	15
Irrigation/Recreation	0	0	0	0	0	0	0	0	0	0
Other	0	0	0	0	0	0	0	0	0	0
Total	1,373	1,381	1,389	1,398	1,406	1,415	1,424	1,432	1,441	1,450

Customer Type	Demand 2011(ccf)	Demand 2012(ccf)	Demand 2013(ccf)	Demand 2014(ccf)	Demand 2015(ccf)	Demand 2016(ccf)	Demand 2017(ccf)	Demand 2018(ccf)	Demand 2019(ccf)	Demand 2020(ccf)
Resident	535,917	539,127	542,356	545,606	548,875	552,164	555,473	558,803	562,153	565,523
Multi- Residential	991	991	991	991	991	991	991	991	991	991
Commercial	28,342	28,678	29,020	29,368	29,721	30,081	30,446	30,817	31,194	31,577
Industrial	0	0	0	0	0	0	0	0	0	0
Government	21,519	21,754	21,993	22,235	22,481	22,730	22,983	23,239	23,500	23,764
Irrigation/Recreation	0	0	0	0	0	0	0	0	0	0
Other	0	0	0	0	0	0	0	0	0	0
Unaccounted	88,793	89,329	89,868	90,411	90,958	91,508	92,062	92,620	93,182	93,748
Total	675,562	679,879	684,229	688,611	693,026	697,474	701,955	706,470	711,019	715,603

Customer Type	Demand 2011(AF)	Demand 2012(AF)	Demand 2013(AF)	Demand 2014(AF)	Demand 2015(AF)	Demand 2016(AF)	Demand 2017(AF)	Demand 2018(AF)	Demand 2019(AF)	Demand 2020(AF)
Resident	1,230	1,238	1,245	1,253	1,260	1,268	1,275	1,283	1,291	1,298
Multi- Residential	2	2	2	2	2	2	2	2	2	2
Commercial	65	66	67	67	68	69	70	71	72	72
Industrial	0	0	0	0	0	0	0	0	0	0
Government	49	50	50	51	52	52	53	53	54	55
Irrigation/Recreation	0	0	0	0	0	0	0	0	0	0
Other	0	0	0	0	0	0	0	0	0	0
Unaccounted	204	205	206	208	209	210	211	213	214	215
Total	1,551	1,561	1,571	1,581	1,591	1,601	1,611	1,622	1,632	1,643

**California Water Service Company - Antelope Valley District
Water Supply and Demand Analysis and Projections**

2020's Projections

Scenario #1: Based on Maintaining Growth at the Low Average Annual Growth and Low Demand per Service for each Customer Class.
 High Average High

Customer Type	Projected Services 2021	Projected Services 2022	Projected Services 2023	Projected Services 2024	Projected Services 2025	Projected Services 2026	Projected Services 2027	Projected Services 2028	Projected Services 2029	Projected Services 2030
Resident	1,396	1,405	1,413	1,422	1,431	1,439	1,448	1,457	1,466	1,475
Multi- Residential	6	6	6	6	6	6	6	6	6	6
Commercial	41	42	42	42	43	43	43	44	44	44 #
Industrial	0	0	0	0	0	0	0	0	0	0
Government	16	16	16	16	16	16	16	17	17	17
Irrigation/Recreation	0	0	0	0	0	0	0	0	0	0
Other	0	0	0	0	0	0	0	0	0	0
Total	1,459	1,468	1,477	1,486	1,495	1,505	1,514	1,523	1,533	1,542

Customer Type	Demand 2021(ccf)	Demand 2022(ccf)	Demand 2023(ccf)	Demand 2024(ccf)	Demand 2025(ccf)	Demand 2026(ccf)	Demand 2027(ccf)	Demand 2028(ccf)	Demand 2029(ccf)	Demand 2030(ccf)
Resident	568,914	572,326	575,759	579,213	582,689	586,185	589,703	593,243	596,804	600,388
Multi- Residential	991	991	991	991	991	991	991	991	991	991
Commercial	31,967	32,363	32,765	33,174	33,589	34,011	34,440	34,876	35,319	35,769
Industrial	0	0	0	0	0	0	0	0	0	0
Government	24,031	24,303	24,579	24,858	25,142	25,430	25,722	26,018	26,319	26,624
Irrigation/Recreation	0	0	0	0	0	0	0	0	0	0
Other	0	0	0	0	0	0	0	0	0	0
Unaccounted	94,317	94,891	95,468	96,049	96,635	97,224	97,817	98,415	99,016	99,622
Total	720,221	724,874	729,562	734,286	739,046	743,841	748,674	753,543	758,450	763,394

Customer Type	Demand 2021(AF)	Demand 2022(AF)	Demand 2023(AF)	Demand 2024(AF)	Demand 2025(AF)	Demand 2026(AF)	Demand 2027(AF)	Demand 2028(AF)	Demand 2029(AF)	Demand 2030(AF)
Resident	1,306	1,314	1,322	1,330	1,338	1,346	1,354	1,362	1,370	1,378
Multi- Residential	2	2	2	2	2	2	2	2	2	2
Commercial	73	74	75	76	77	78	79	80	81	82
Industrial	0	0	0	0	0	0	0	0	0	0
Government	55	56	56	57	58	58	59	60	60	61
Irrigation/Recreation	0	0	0	0	0	0	0	0	0	0
Other	0	0	0	0	0	0	0	0	0	0
Unaccounted	217	218	219	221	222	223	225	226	227	229
Total	1,653	1,664	1,675	1,686	1,697	1,708	1,719	1,730	1,741	1,753

**California Water Service Company - Antelope Valley District
Water Supply and Demand Analysis and Projections**

2030's Projections

Scenario #1: Based on Maintaining Growth at the Low Average Annual Growth and Low Demand per Service for each Customer Class.
 High Average High

Customer Type	Projected Services 2031	Projected Services 2032	Projected Services 2033	Projected Services 2034	Projected Services 2035	Projected Services 2036	Projected Services 2037	Projected Services 2038	Projected Services 2039	Projected Services 2040
Resident	1,484	1,493	1,502	1,511	1,521	1,530	1,539	1,549	1,558	1,568
Multi- Residential	6	6	6	6	6	6	6	6	6	6
Commercial	45	45	46	46	46	47	47	48	48	48
Industrial	0	0	0	0	0	0	0	0	0	0
Government	17	17	17	18	18	18	18	18	19	19
Irrigation/Recreation	0	0	0	0	0	0	0	0	0	0
Other	0	0	0	0	0	0	0	0	0	0
Total	1,552	1,561	1,571	1,581	1,591	1,601	1,611	1,621	1,631	1,641

Customer Type	Demand 2031(ccf)	Demand 2032(ccf)	Demand 2033(ccf)	Demand 2034(ccf)	Demand 2035(ccf)	Demand 2036(ccf)	Demand 2037(ccf)	Demand 2038(ccf)	Demand 2039(ccf)	Demand 2040(ccf)
Resident	603,993	607,620	611,270	614,942	618,637	622,355	626,095	629,859	633,645	637,455
Multi- Residential	991	991	991	991	991	991	991	991	991	991
Commercial	36,226	36,691	37,163	37,642	38,129	38,624	39,127	39,638	40,157	40,684
Industrial	0	0	0	0	0	0	0	0	0	0
Government	26,933	27,247	27,566	27,889	28,217	28,550	28,888	29,230	29,578	29,931
Irrigation/Recreation	0	0	0	0	0	0	0	0	0	0
Other	0	0	0	0	0	0	0	0	0	0
Unaccounted	100,232	100,846	101,465	102,087	102,714	103,346	103,982	104,622	105,267	105,916
Total	768,376	773,396	778,454	783,552	788,689	793,866	799,083	804,340	809,638	814,977

Customer Type	Demand 2031(AF)	Demand 2032(AF)	Demand 2033(AF)	Demand 2034(AF)	Demand 2035(AF)	Demand 2036(AF)	Demand 2037(AF)	Demand 2038(AF)	Demand 2039(AF)	Demand 2040(AF)
Resident	1,387	1,395	1,403	1,412	1,420	1,429	1,437	1,446	1,455	1,463
Multi- Residential	2	2	2	2	2	2	2	2	2	2
Commercial	83	84	85	86	88	89	90	91	92	93
Industrial	0	0	0	0	0	0	0	0	0	0
Government	62	63	63	64	65	66	66	67	68	69
Irrigation/Recreation	0	0	0	0	0	0	0	0	0	0
Other	0	0	0	0	0	0	0	0	0	0
Unaccounted	230	232	233	234	236	237	239	240	242	243
Total	1,764	1,775	1,787	1,799	1,811	1,822	1,834	1,847	1,859	1,871

California Water Service Company -Antelope Valley District

Water Supply and Demand Analysis and Projections

2000's Projections

Scenario #4: Based on Maintaining Growth at the 10-Year Average Annual Growth
 5-Year

Summary of Historical Growth Rate from Worksheet 2			
Customer Type	5 Yr. Avg. Historical Growth Rate	Individual Growth Rate Selected	Notes
Single Family Residential	0.45%	0.45%	Historical growth rate used
Multi Family Residential	0.00%	0.42%	Percent changed to overall growth rate
Commercial	-0.48%	-0.48%	Historical growth rate used
Industrial	0.00%	0.42%	Percent changed to overall growth rate
Government	4.05%	4.05%	Historical growth rate used
Irrigation/Recreation	0.00%	0.42%	Percent changed to overall growth rate
Other	-3.33%	0.42%	Percent changed to overall growth rate
Overall	0.42%	0.42%	

California Water Service Company - Antelope Valley District Water Supply and Demand Analysis and Projections

30-year projection Summary

Scenario #4: Based on Maintaining Growth at the

10-Year
 5-Year

Average Annual Growth

Customer Type	Projected Services 2010	Projected Services 2015	Projected Services 2020	Projected Services 2025	Projected Services 2030	Projected Services 2035	Projected Services 2040	Services projected to be added from 2010 - 2040
Single Family Residential	1,298	1,371	1,449	1,532	1,619	1,711	1,809	511
Multi Family Residential	6	6	7	7	7	7	8	2
Commercial	38	40	41	43	44	46	48	10
Industrial	0	0	0	0	0	0	0	0
Government	14	18	24	32	43	60	84	70
Irrigation/Recreation	0	0	0	0	0	0	0	0
Other	0	0	0	0	0	0	0	0
Total	1,356	1,435	1,521	1,613	1,714	1,825	1,949	593

California Water Service Company - Antelope Valley District Water Supply and Demand Analysis and Projections

2000's Projections

Scenario #4: Based on Maintaining Growth at the 10-Year Average Annual Growth
 5-Year

Customer Type	Actual Services 2001	Actual Services 2002	Actual Services 2003	Actual Services 2004	Actual Services 2005	Actual Services 2006	Actual Services 2007	Actual Services 2008	Actual Services 2009	Projected Services 2010
Resident	1,213	1,207	1,186	1,272	1,291	1,305	1,319	1,308	1,298	1,298
Multi- Residential	10	7	6	6	6	6	6	6	6	6
Commercial	32	33	38	39	38	37	36	37	38	38
Industrial	0	0	0	0	0	0	0	0	0	0
Government	12	12	11	12	12	11	10	13	14	14
Irrigation/Recreation	2	1	0	0	0	0	2	0	0	0
Other	1	1	1	2	3	3	1	1	0	0
Total	292	287	287	277	288	1,359	1,369	1,364	1,356	1,356

2010's Projections

Customer Type	Projected Services 2011	Projected Services 2012	Projected Services 2013	Projected Services 2014	Projected Services 2015	Projected Services 2016	Projected Services 2017	Projected Services 2018	Projected Services 2019	Projected Services 2020
Resident	1,312	1,327	1,342	1,356	1,371	1,387	1,402	1,418	1,433	1,449
Multi- Residential	6	6	6	6	6	6	6	6	7	7
Commercial	38	39	39	39	40	40	40	40	41	41
Industrial	0	0	0	0	0	0	0	0	0	0
Government	15	15	16	17	18	19	20	21	22	24
Irrigation/Recreation	0	0	0	0	0	0	0	0	0	0
Other	0	0	0	0	0	0	0	0	0	0
Total	1,372	1,387	1,403	1,419	1,435	1,452	1,469	1,486	1,503	1,521

California Water Service Company - Antelope Valley District Water Supply and Demand Analysis and Projections

Worksheet 13

2020's Projections

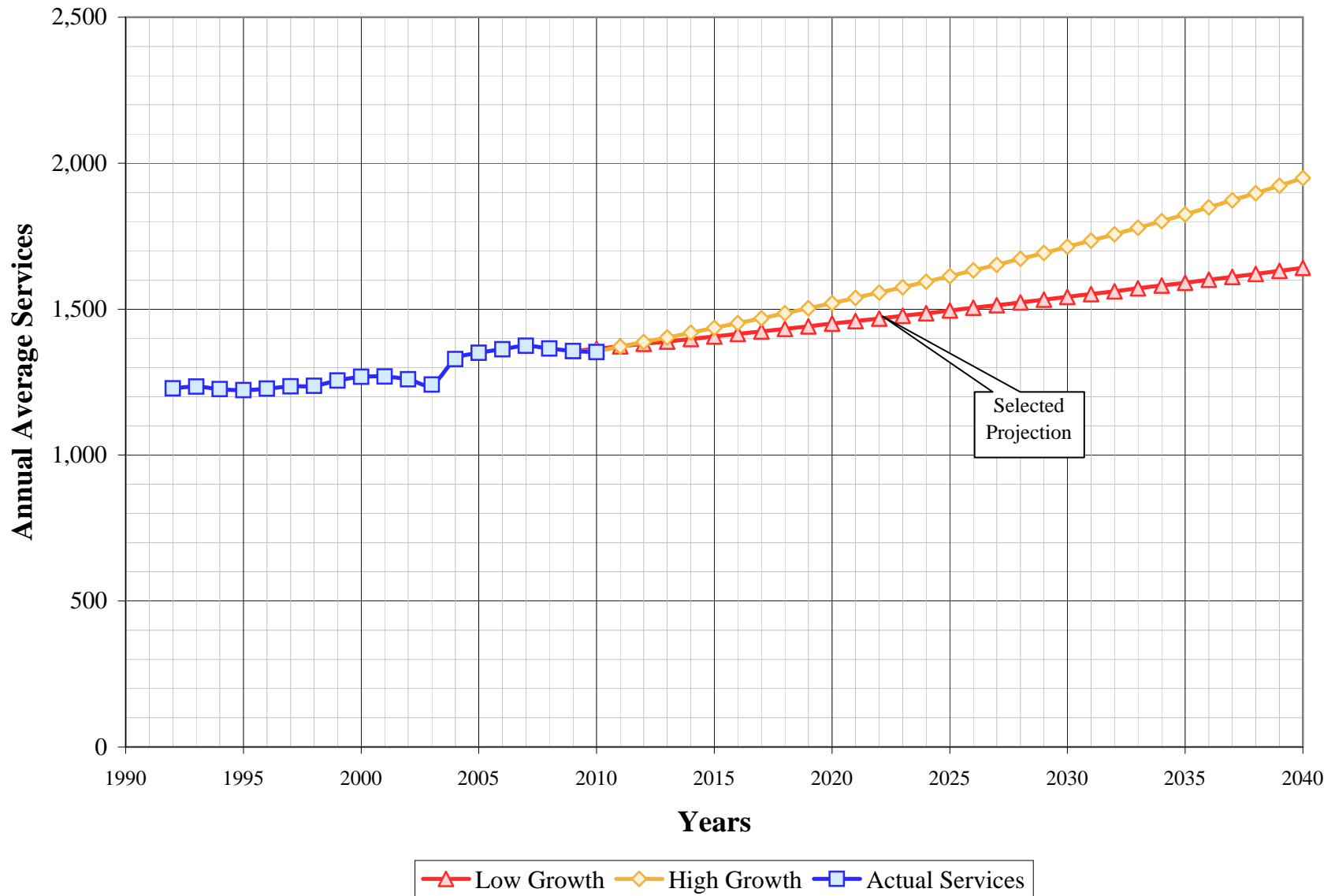
Scenario #4: Based on Maintaining Growth at the 10-Year Average Annual Growth
 5-Year

Customer Type	Projected Services 2021	Projected Services 2022	Projected Services 2023	Projected Services 2024	Projected Services 2025	Projected Services 2026	Projected Services 2027	Projected Services 2028	Projected Services 2029	Projected Services 2030
Resident	1,465	1,482	1,498	1,515	1,532	1,549	1,566	1,583	1,601	1,619
Multi- Residential	7	7	7	7	7	7	7	7	7	7
Commercial	41	42	42	42	43	43	43	44	44	44
Industrial	0	0	0	0	0	0	0	0	0	0
Government	25	27	28	30	32	34	36	38	41	43
Irrigation/Recreation	0	0	0	0	0	0	0	0	0	0
Other	0	0	0	0	0	0	0	0	0	0
Total	1,538	1,557	1,575	1,594	1,613	1,632	1,652	1,672	1,693	1,714

2030's Projections

Customer Type	Projected Services 2031	Projected Services 2032	Projected Services 2033	Projected Services 2034	Projected Services 2035	Projected Services 2036	Projected Services 2037	Projected Services 2038	Projected Services 2039	Projected Services 2040
Resident	1,637	1,655	1,674	1,692	1,711	1,730	1,750	1,769	1,789	1,809
Multi- Residential	7	7	7	7	7	7	8	8	8	8
Commercial	45	45	45	46	46	47	47	47	48	48
Industrial	0	0	0	0	0	0	0	0	0	0
Government	46	49	53	56	60	64	69	73	78	84
Irrigation/Recreation	0	0	0	0	0	0	0	0	0	0
Other	0	0	0	0	0	0	0	0	0	0
Total	1,735	1,757	1,779	1,802	1,825	1,848	1,873	1,897	1,923	1,949

Antelope Valley District Historical & Projected Services

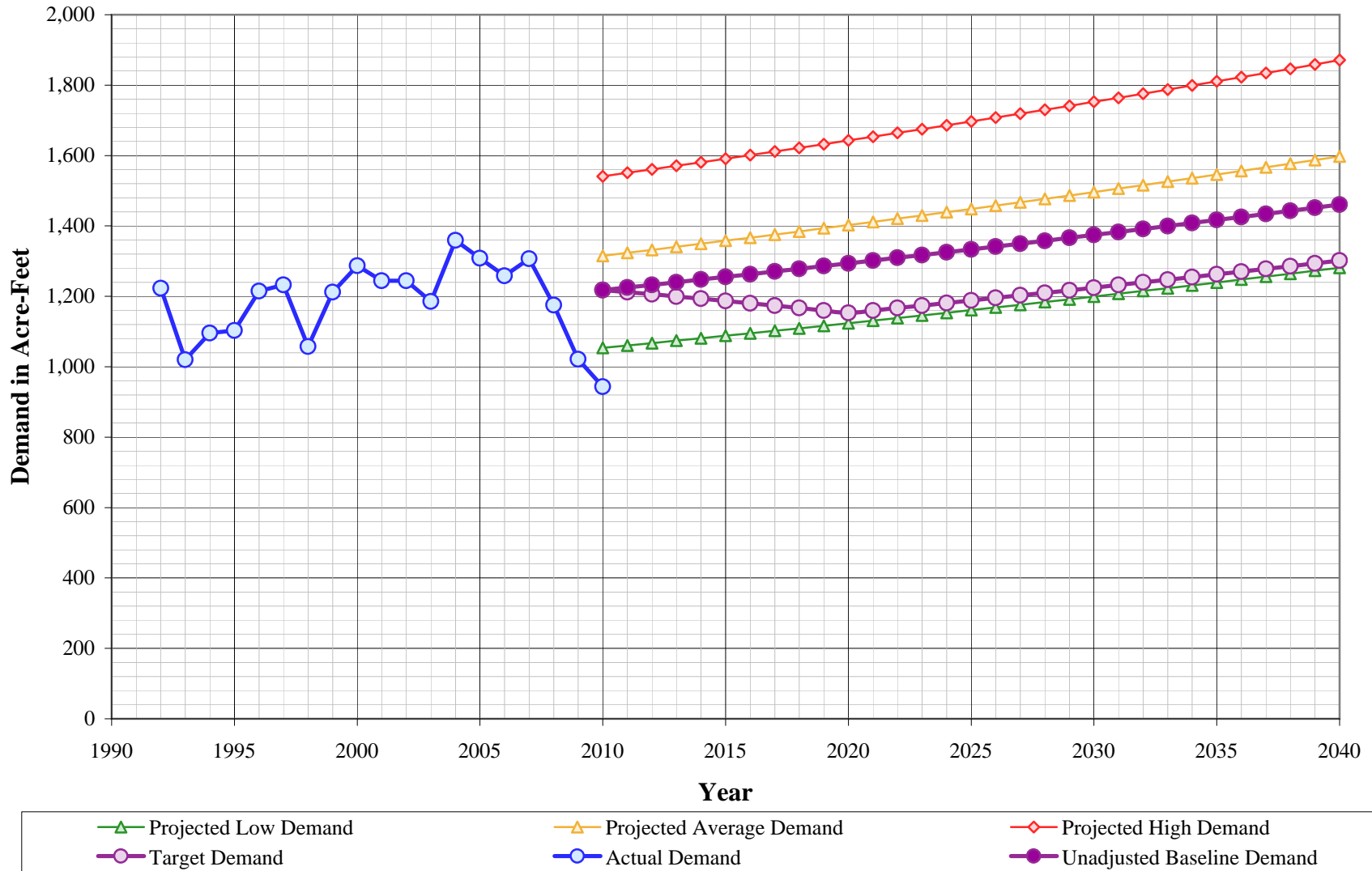


California Water Service Company - Antelope Valley District
Water Supply and Demand Analysis and Projections
Projected Annual Average Services

Year	Actual Services	Projected Services	
		Low Growth	High Growth
1990			
1991			
1992	1,229		
1993	1,234		
1994	1,226		
1995	1,223		
1996	1,228		
1997	1,235		
1998	1,237		
1999	1,255		
2000	1,268		
2001	1,269		
2002	1,260		
2003	1,242		
2004	1,328		
2005	1,350		
2006	1,362		
2007	1,374		
2008	1,365		
2009	1,356	1,356	1,356
2010	1,353	1,364	1,356
2011		1,373	1,372
2012		1,381	1,387
2013		1,389	1,403
2014		1,398	1,419
2015		1,406	1,435

Year	Actual Services	Projected Services	
		Low Growth	High Growth
2016		1,415	1,452
2017		1,424	1,469
2018		1,432	1,486
2019		1,441	1,503
2020		1,450	1,521
2021		1,459	1,538
2022		1,468	1,557
2023		1,477	1,575
2024		1,486	1,594
2025		1,495	1,613
2026		1,505	1,632
2027		1,514	1,652
2028		1,523	1,672
2029		1,533	1,693
2030		1,542	1,714
2031		1,552	1,735
2032		1,561	1,757
2033		1,571	1,779
2034		1,581	1,802
2035		1,591	1,825
2036		1,601	1,848
2037		1,611	1,873
2038		1,621	1,897
2039		1,631	1,923
2040		1,641	1,949

Antelope Valley District Historical & Projected Demand

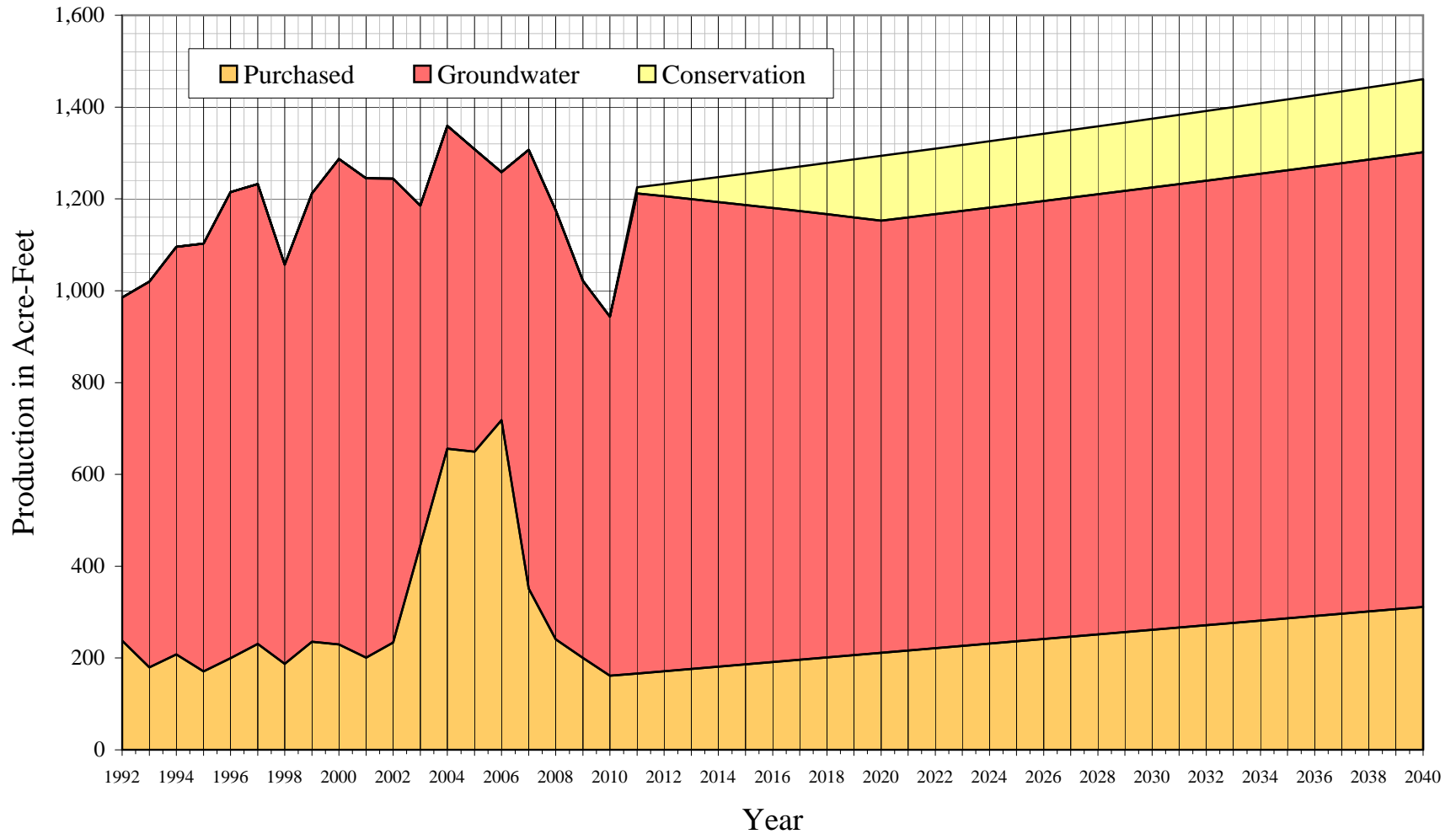


California Water Service Company - Antelope Valley District
Water Supply and Demand Analysis and Projections
Projected Demand in Acre-Feet

	Actual Demand	Projection			Unadjusted Baseline Demand	Target Demand		Actual Demand	Projection			Unadjusted Baseline Demand	Target Demand
		Low	Average	High					Low	Average	High		
1990													
1991							2016	1,095	1,367	1,601	1,180		
1992	1,223						2017	1,102	1,376	1,611	1,174		
1993	1,020						2018	1,109	1,384	1,622	1,167		
1994	1,096						2019	1,116	1,393	1,632	1,160		
1995	1,103						2020	1,124	1,402	1,643	1,153		
1996	1,215						2021	1,131	1,411	1,653	1,160		
1997	1,232						2022	1,138	1,421	1,664	1,167		
1998	1,057						2023	1,146	1,430	1,675	1,174		
1999	1,212						2024	1,153	1,439	1,686	1,181		
2000	1,287						2025	1,161	1,448	1,697	1,188		
2001	1,245						2026	1,168	1,458	1,708	1,195		
2002	1,244						2027	1,176	1,467	1,719	1,203		
2003	1,185						2028	1,184	1,477	1,730	1,210		
2004	1,359						2029	1,192	1,487	1,741	1,217		
2005	1,308						2030	1,199	1,496	1,753	1,225		
2006	1,258						2031	1,207	1,506	1,764	1,232		
2007	1,307						2032	1,215	1,516	1,775	1,240		
2008	1,175						2033	1,223	1,526	1,787	1,247		
2009	1,021						2034	1,231	1,536	1,799	1,255		
2010	944	1,053	1,315	1,541	1,218	1,218	2035	1,239	1,546	1,811	1,263		
2011		1,060	1,324	1,551	1,225	1,212	2036	1,248	1,556	1,822	1,270		
2012		1,067	1,332	1,561	1,233	1,206	2037	1,256	1,566	1,834	1,278		
2013		1,074	1,341	1,571	1,240	1,200	2038	1,264	1,577	1,847	1,286		
2014		1,081	1,349	1,581	1,248	1,193	2039	1,273	1,587	1,859	1,294		
2015		1,088	1,358	1,591	1,255	1,187	2040	1,281	1,598	1,871	1,301		

Antelope Valley District

Historical and Projected Distribution of Demand by Source



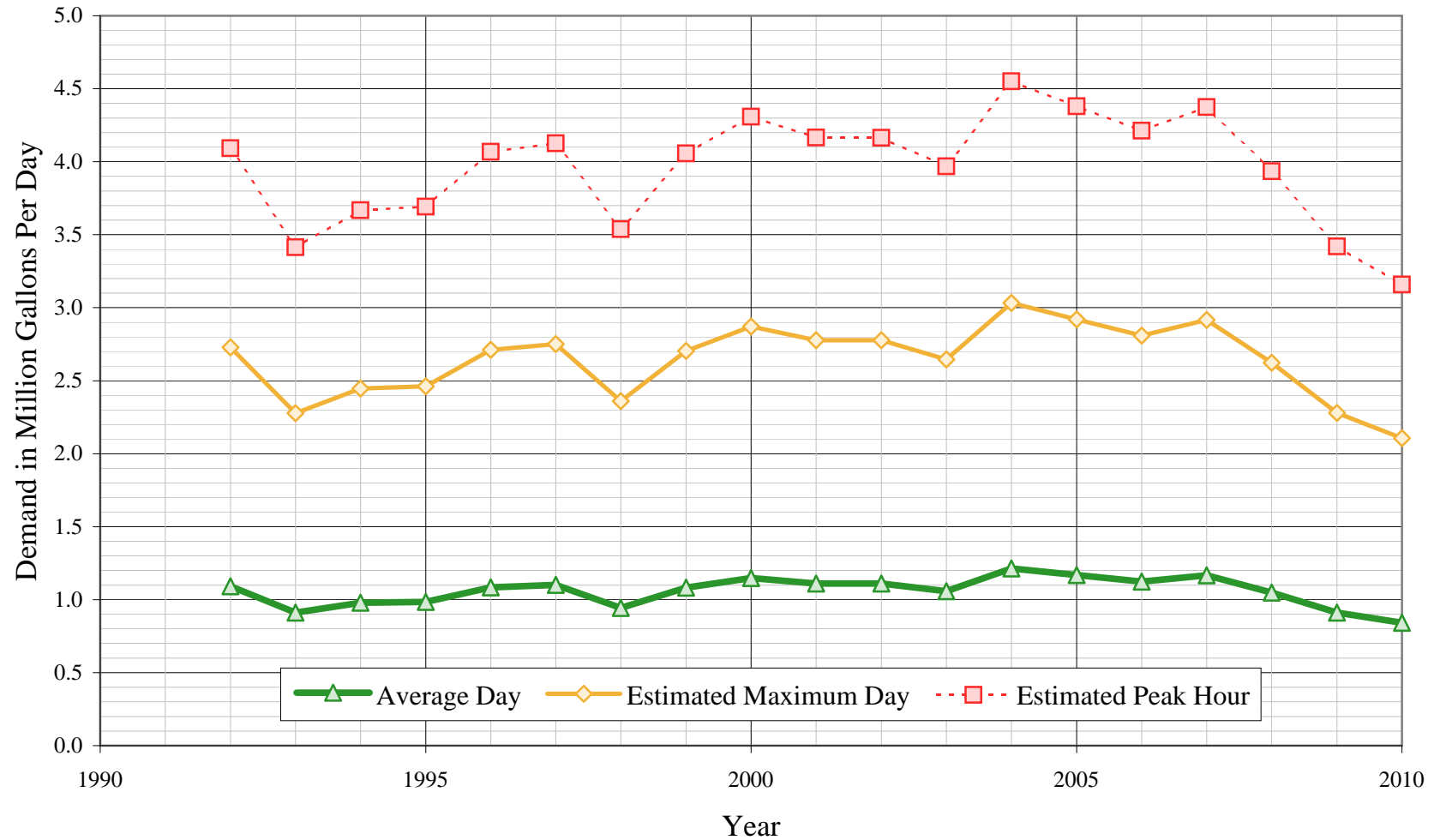
California Water Service Company - Antelope Valley District
Water Supply and Demand Analysis and Projections
Historical and Projected Distribution of Demand by Source

Worksheet 17

Year	Purchased Water		Groundwater		Conservation		Total Supply		Year	Purchased Water		Groundwater		Conservation		Total Supply	
	kGal	AFY	kGal	AFY	kGal	AFY	kGal	AFY		kGal	AFY	kGal	AFY	kGal	AFY	kGal	AFY
1990																	
1991																	
1992	77,437	238	243,551	747			320,988	985	2016	62,364	191	322,248	989	26,900	83	411,505	1,263
1993	58,616	180	273,733	840			332,349	1,020	2017	63,993	196	318,440	977	31,574	97	413,999	1,271
1994	67,675	208	289,400	888			357,075	1,096	2018	65,623	201	314,592	965	36,303	111	416,510	1,278
1995	55,647	171	303,706	932			359,353	1,103	2019	67,252	206	310,703	953	41,089	126	419,036	1,286
1996	65,134	200	330,750	1,015			395,884	1,215	2020	68,881	211	306,774	941	45,931	141	421,578	1,294
1997	75,260	231	326,352	1,002			401,612	1,232	2021	70,510	216	307,424	943	46,210	142	424,136	1,302
1998	61,020	187	283,432	870			344,452	1,057	2022	72,140	221	308,088	945	46,490	143	426,710	1,310
1999	76,804	236	318,081	976			394,885	1,212	2023	73,769	226	308,767	948	46,772	144	429,301	1,317
2000	74,716	229	344,601	1,058			419,317	1,287	2024	75,398	231	309,461	950	47,056	144	431,907	1,325
2001	65,529	201	340,006	1,043			405,535	1,245	2025	77,027	236	310,169	952	47,342	145	434,531	1,334
2002	76,187	234	329,170	1,010			405,357	1,244	2026	78,657	241	310,892	954	47,630	146	437,170	1,342
2003	145,276	446	240,930	739			386,206	1,185	2027	80,286	246	311,630	956	47,919	147	439,827	1,350
2004	213,777	656	229,128	703			442,905	1,359	2028	81,915	251	312,383	959	48,210	148	442,500	1,358
2005	211,611	649	214,639	659			426,250	1,308	2029	83,545	256	313,151	961	48,504	149	445,190	1,366
2006	233,927	718	176,155	541			410,081	1,258	2030	85,174	261	313,934	963	48,799	150	447,898	1,375
2007	114,390	351	311,461	956			425,852	1,307	2031	86,803	266	314,732	966	49,095	151	450,622	1,383
2008	78,527	241	304,429	934			382,956	1,175	2032	88,432	271	315,545	968	49,394	152	453,363	1,391
2009	65,192	200	267,641	821			332,833	1,021	2033	90,062	276	316,374	971	49,695	153	456,122	1,400
2010	52,588	161	254,868	782			307,456	944	2034	91,691	281	317,219	973	49,997	153	458,899	1,408
2011	54,218	166	340,704	1,046	4,350	13	399,264	1,225	2035	93,320	286	318,079	976	50,301	154	461,693	1,417
2012	55,847	171	337,090	1,034	8,753	27	401,681	1,233	2036	94,950	291	318,956	979	50,608	155	464,504	1,426
2013	57,476	176	333,437	1,023	13,208	41	404,114	1,240	2037	96,579	296	319,847	982	50,916	156	467,334	1,434
2014	59,105	181	329,747	1,012	17,718	54	406,562	1,248	2038	98,208	301	320,755	984	51,226	157	470,181	1,443
2015	60,735	186	326,017	1,000	22,282	68	409,026	1,255	2039	99,837	306	321,679	987	51,538	158	473,047	1,452
									2040	101,467	311	322,620	990	51,853	159	475,930	1,461

Antelope Valley District

Average Day, Maximum Day, & Peak Hour Demand



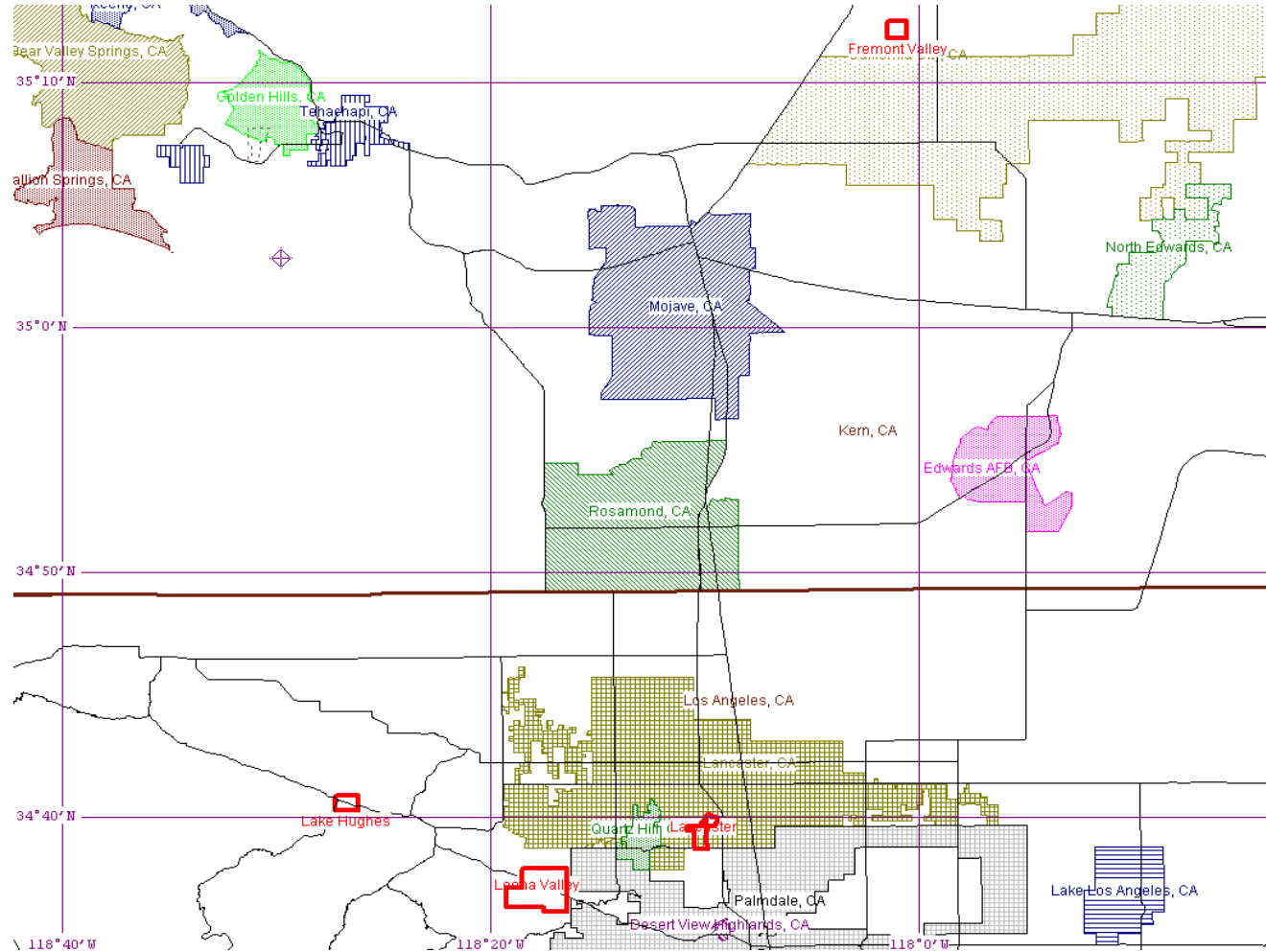
California Water Service Company - Antelope Valley District
Water Supply and Demand Analysis and Projections
Historical and Projected Average Day, Maximum Day, and Peak Demand

Worksheet 18

Year	Historical Annual Demand		Average Day		Estimated Maximum Day		Max Day : Ave. Day Ratio	Peak Hour Demand		Peak to Ave Day Ratio	Peak to Max Day Ratio
	(AF)	(MG)	(MG)	Use Per Service (gal)	(MG)	Use Per Service (gal)		(GPM)	(MGD)		
1990											
1991											
1992	1,223	398	1.1	888	2.7	2,221	2.50	2,843	4.09	3.75	1.50
1993	1,020	332	0.9	738	2.3	1,845	2.50	2,371	3.41	3.75	1.50
1994	1,096	357	1.0	798	2.4	1,996	2.50	2,548	3.67	3.75	1.50
1995	1,103	359	1.0	805	2.5	2,013	2.50	2,564	3.69	3.75	1.50
1996	1,215	396	1.1	883	2.7	2,209	2.50	2,824	4.07	3.75	1.50
1997	1,232	402	1.1	891	2.8	2,227	2.50	2,865	4.13	3.75	1.50
1998	1,057	344	0.9	763	2.4	1,907	2.50	2,458	3.54	3.75	1.50
1999	1,212	395	1.1	862	2.7	2,154	2.50	2,817	4.06	3.75	1.50
2000	1,287	419	1.1	906	2.9	2,265	2.50	2,992	4.31	3.75	1.50
2001	1,245	406	1.1	876	2.8	2,189	2.50	2,893	4.17	3.75	1.50
2002	1,244	405	1.1	882	2.8	2,204	2.50	2,892	4.16	3.75	1.50
2003	1,185	386	1.1	852	2.6	2,130	2.50	2,755	3.97	3.75	1.50
2004	1,359	443	1.2	913	3.0	2,284	2.50	3,160	4.55	3.75	1.50
2005	1,308	426	1.2	865	2.9	2,163	2.50	3,041	4.38	3.75	1.50
2006	1,258	410	1.1	825	2.8	2,062	2.50	2,926	4.21	3.75	1.50
2007	1,307	426	1.2	849	2.9	2,123	2.50	3,038	4.38	3.75	1.50
2008	1,175	383	1.0	769	2.6	1,922	2.50	2,732	3.93	3.75	1.50
2009	1,021	333	0.9	672	2.3	1,681	2.50	2,375	3.42	3.75	1.50
2010	944	307	0.8	623	2.1	1,556	2.50	2,194	3.16	3.75	1.50
5 year Average (2006-2010)			1.02	748	2.55	1,869	2.50	2,653	3.82	3.75	1.50
10 year Average (2001-2010)			1.08	813	2.69	2,031	2.50	2,801	4.03	3.75	1.50

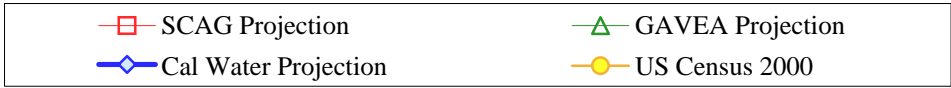
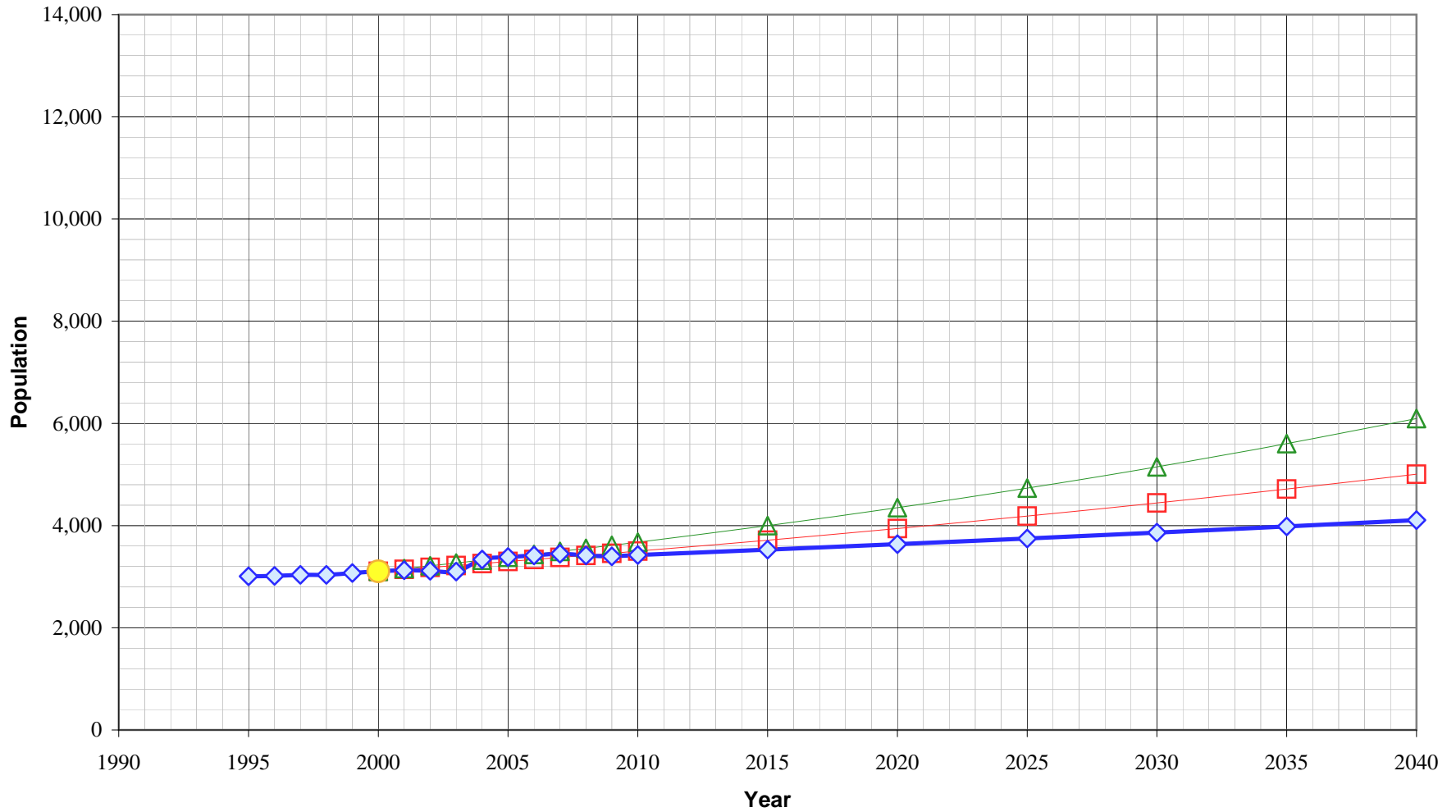
California Water Service Company - Antelope Valley District Water Supply and Demand Analysis and Projections

US Census 2000 Tract Map Summary



US Census 2000 Summary				
Division	Census Tract Blocks	Population	Housing Units	Density
Fremont Valley	15	129	72	1.79
Lake Hughes	18	159	113	1.41
Lancaster	35	1,715	743	2.31
Leona Valley	9	1,103	423	2.61
	77	3,106	1,351	2.30

Antelope Valley District Population Projections



**California Water Service Company - Antelope Valley District
Water Supply and Demand Analysis and Projections**

Population as of the 2000 Average Annual Services
Estimated District Population based on 2000 U.S. Census Data & Annual Service Count

District Communities Served:
Antelope Valley, Fremont Valley - Mojave, Lancaster, Lake Hughes, Leona Valley

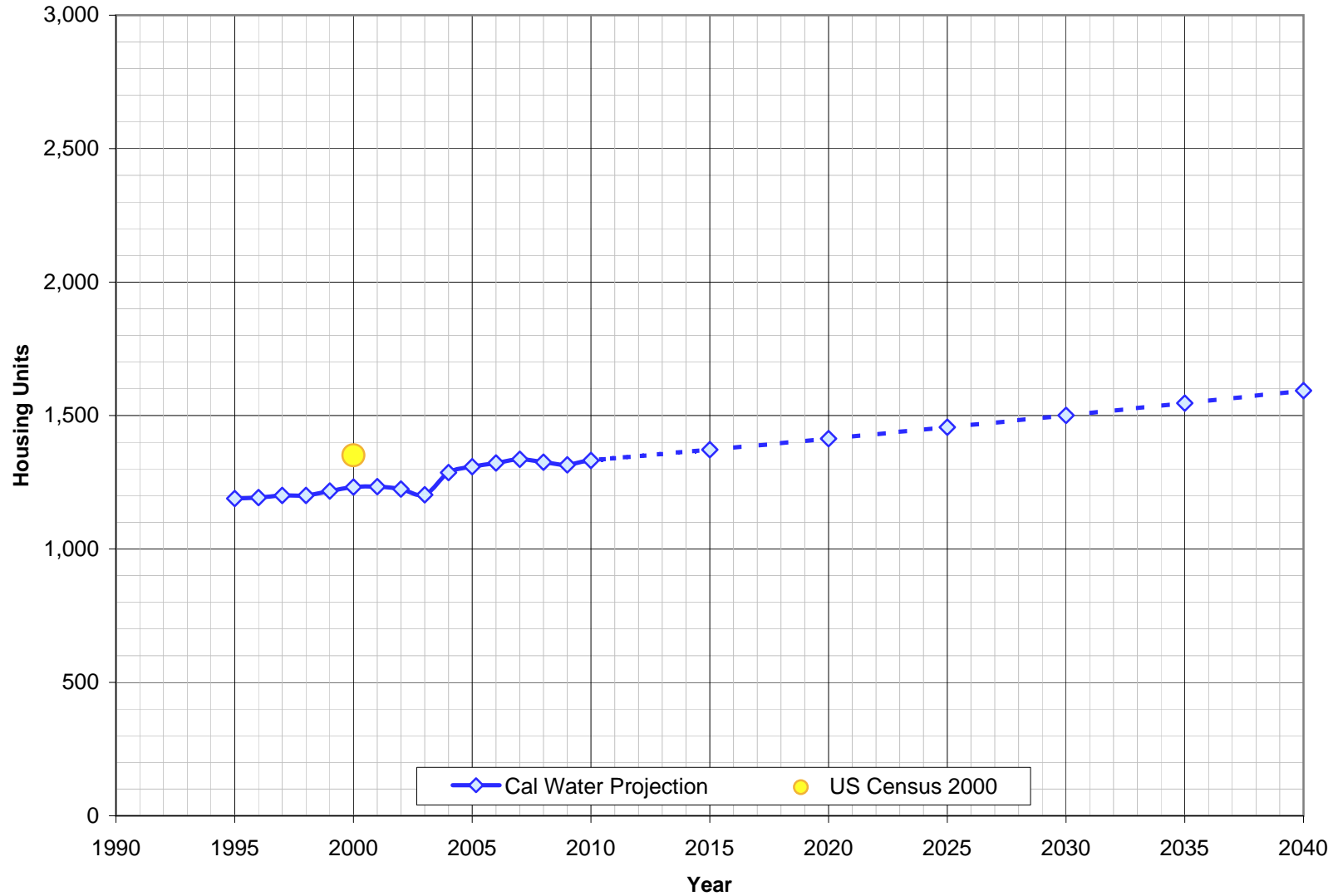
Year	Metered Single Family Residential Services (DU)	Multi Family Residential			Flat Rate Residential Services (DU)	Total Residential Services (DU)	Estimated District Population
		Services	Residential Units (DU)	Unit Density			
1995	1,166	9	23	2.6	0	1,189	3,008
1996	1,172	8	21	2.6	0	1,192	3,015
1997	1,180	8	20	2.6	0	1,201	3,035
1998	1,183	7	18	2.6	0	1,201	3,037
1999	1,199	7	18	2.7	0	1,217	3,072
2000	1,211	8	21	2.7	0	1,232	3,106
2001	1,213	8	21	2.7	0	1,233	3,125
2002	1,206	7	19	2.7	0	1,225	3,116
2003	1,186	6	17	2.8	0	1,203	3,100
2004	1,269	6	17	2.8	0	1,286	3,335
2005	1,291	6	17	2.8	0	1,308	3,385
2006	1,305	6	17	2.8	0	1,322	3,416
2007	1,319	6	17	2.8	0	1,336	3,449
2008	1,308	6	17	2.8	0	1,325	3,416
2009	1,298	6	17	2.8	0	1,315	3,397
2010	1,306	6	17	2.8	0	1,331	3,423
2015	1,346	6	17	2.8	0	1,372	3,528
2020	1,388	6	17	2.8	0	1,413	3,637
2025	1,431	6	17	2.8	0	1,456	3,748
2030	1,475	6	17	2.8	0	1,500	3,864
2035	1,521	6	17	2.8	0	1,546	3,983
2040	1,568	6	17	2.8	0	1,593	4,106

US Census 2000		Calculated Persons per CWS DU	Calculated Persons per US Census Housing Unit
Population	Housing Units		

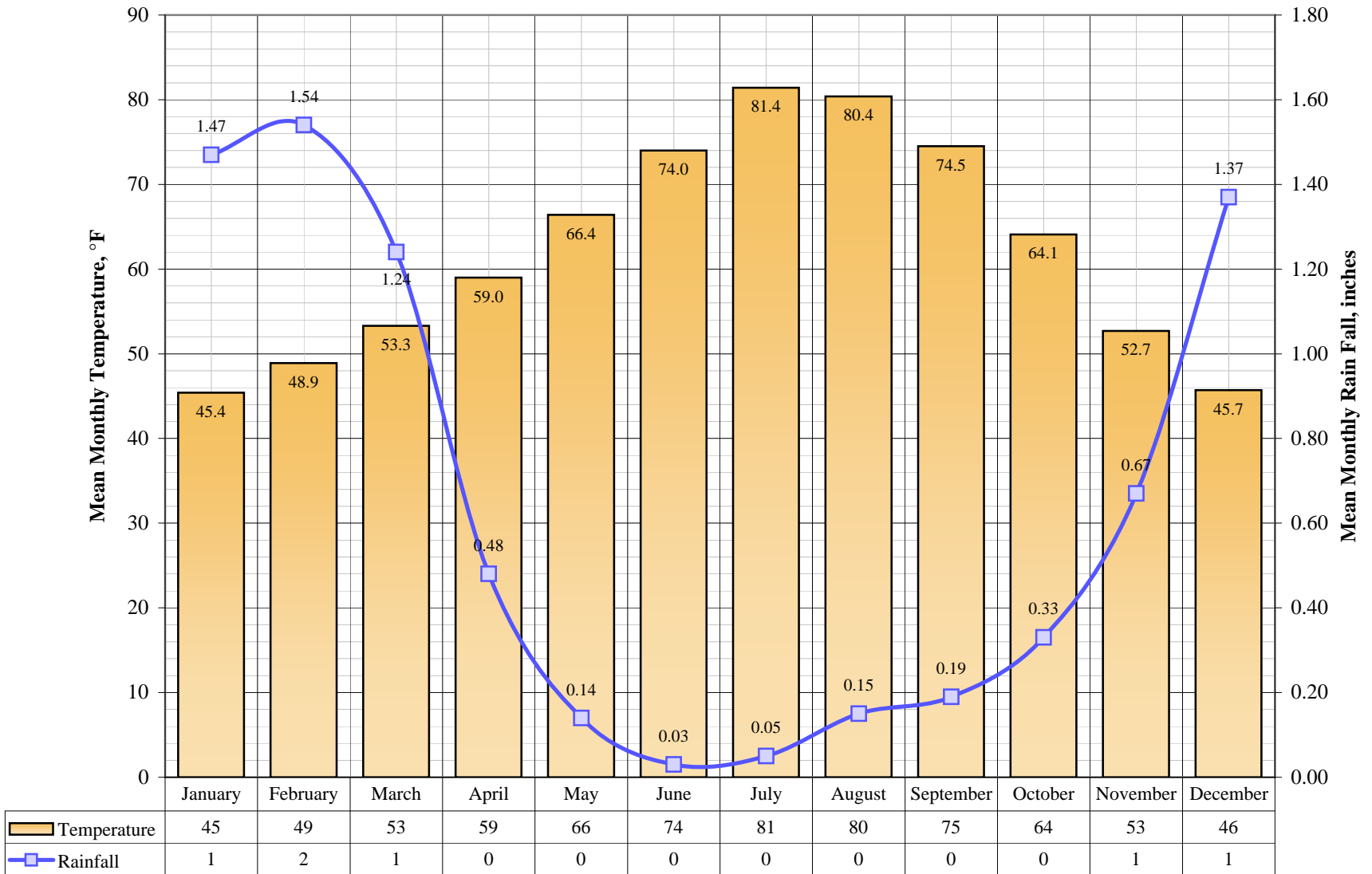
3,106	1,351	2,521	2,299
-------	-------	-------	-------

Note: Insufficient data for MFR Units for year 1995 to 2001. Linear regression performed for year 2002 to 2006 on unit density and used to estimate MFR DU for years prior to 2002 and projection for 2010 to 2040.

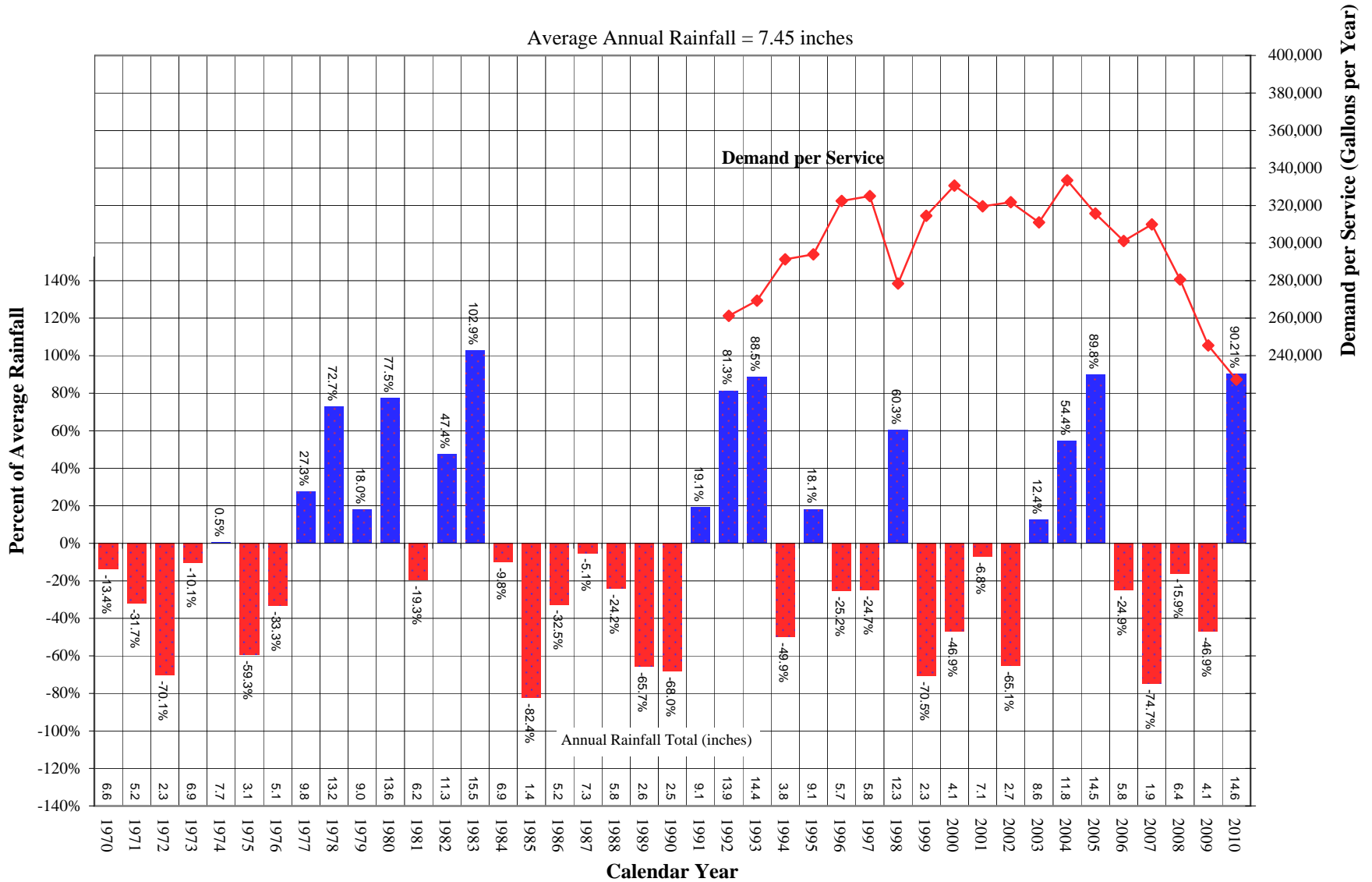
Antelope Valley District Housing Units



Antelope Valley District Average Monthly Temperature and Rainfall



Antelope Valley District Comparison of Annual Rainfall to Historic Average



California Water Service Company - Antelope Valley District Water Supply and Demand Analysis and Projections

Worksheet 20

Temperature & Rainfall History (Fahrenheit, Inches)

Year	Annual Average Temp.	Annual Average Rainfall	Rainfall Percent Variation	Demand per Service (Gal / Yr)	Percent of Normal Demand	Year	Annual Average Temp.	Annual Average Rainfall	Rainfall Percent Variation	Demand per Service (Gal / Yr)	Percent of Normal Demand
1970	62.2	6.63	-13.4%			1995	64.5	9.05	18.1%	294,020	97.5%
1971	60.1	5.23	-31.7%			1996	65.8	5.73	-25.2%	322,453	107.0%
1972	61.5	2.29	-70.1%			1997	64.7	5.77	-24.7%	325,072	107.8%
1973	61.0	6.89	-10.1%			1998	61.4	12.28	60.3%	278,417	92.4%
1974	61.6	7.70	0.5%			1999	63.9	2.26	-70.5%	314,558	104.4%
1975	60.7	3.12	-59.3%			2000	64.7	4.07	-46.9%	330,621	109.7%
1976	61.4	5.11	-33.3%			2001	64.2	7.14	-6.8%	319,615	106.0%
1977	62.1	9.75	27.3%			2002	63.9	2.67	-65.1%	321,774	106.8%
1978	60.9	13.23	72.7%			2003	64.1	8.61	12.4%	311,016	103.2%
1979	60.0	9.04	18.0%			2004	63.4	11.83	54.4%	333,429	110.6%
1980	61.3	13.60	77.5%			2005	62.8	14.54	89.8%	315,741	104.7%
1981	62.7	6.18	-19.3%			2006	63.0	5.75	-24.9%	301,088	99.9%
1982	59.9	11.29	47.4%			2007	63.9	1.94	-74.7%	309,936	102.8%
1983	60.3	15.54	102.9%			2008	70.9	6.44	-15.9%	280,554	93.1%
1984	61.7	6.91	-9.8%			2009	67.0	4.07	-46.9%	245,452	81.4%
1985	63.2	1.35	-82.4%			2010	63.6	14.57	90.21%	227,240	75.4%
1986	62.6	5.17	-32.5%			2011					
1987	62.1	7.27	-5.1%			2012					
1988	63.2	5.81	-24.2%			2013					
1989	63.2	2.63	-65.7%			2014					
1990	62.8	2.45	-68.0%			2015					
1991	62.9	9.12	19.1%			2016					
1992	63.1	13.89	81.3%	261,236	86.7%	2017					
1993	62.7	14.44	88.5%	269,300	89.3%	2018					
1994	63.9	3.84	-49.9%	291,360	96.7%	2019					

Source: Western Regional Climate Center: <http://www.wrcc.dri.edu/cgi-bin/cliMAIN.pl?ca6624>

Calendar Year	Average Water Year	Normal Water Year	Single-Dry Water Year	Multiple-Dry Water Years			
				1	2	3	4
	-	2003	2007	2006	2007	2008	2009
Demand per Service (gal/yr)	301,424	311,016	309,936	301,088	309,936	280,554	245,452
Difference from Average	100.0%	100.0%	99.7%	96.8%	99.7%	90.2%	78.9%

California Water Service Company - Antelope Valley District Water Supply and Demand Analysis and Projections

Worksheet 20

Temperature Data

Station:(046624) PALMDALE															
From Year=1903 To Year=2010															
	Monthly Averages			Daily Extremes				Monthly Extremes				Max. Temp.		Min. Temp.	
	Max.	Min.	Mean	High	Date	Low	Date	Highest Mean	Year	Lowest Mean	Year	>= 90 F	<= 32 F	<= 32 F	<= 0 F
	F	F	F	F	dd/yyyy or yyyymmdd	F	dd/yyyy or yyyymmdd	F	-	F	-	# Days	# Days	# Days	# Days
January	58	32	45	81	15/1943	6	13/1963	52	2,003	33	1,937	0	0	16	0
February	62	36	49	84	28/1999	15	4/1979	56	1,995	42	1,939	0	0	9	0
March	67	39	53	91	20/1997	14	2/1971	65	2,008	46	1,948	0	0	5	0
April	74	44	59	98	7/1989	20	23/1971	71	2,008	47	1,967	2	0	1	0
May	82	51	66	107	31/1950	28	1/1988	75	1,997	59	1,953	7	0	0	0
June	90	58	74	112	21/1961	35	2/1967	81	1,960	65	1,944	17	0	0	0
July	98	65	81	113	10/1961	43	5/1948	87	1,931	75	1,983	28	0	0	0
August	97	64	80	112	13/1933	38	19/1931	85	1,958	75	1,976	28	0	0	0
September	91	58	75	111	2/1950	34	20/1978	80	1,995	67	1,986	20	0	0	0
October	80	48	64	105	5/1980	23	30/1971	71	2,003	59	1,946	5	0	0	0
November	67	38	53	93	1/1970	14	19/1964	61	1,995	47	1,964	0	0	7	0
December	59	33	46	84	4/1958	9	15/1971	55	1,950	39	1,984	0	0	16	0
Annual	77	47	62	113	19610710	6	19630113	66	1,996	59	1,944	106	0	55	0

	Jan	Feb	Mar	Apr	May	Jun	Jul	Aug	Sep	Oct	Nov	Dec	Total
Monthly Average ETo Report	2.02	2.61	4.55	6.19	7.3	8.85	9.77	8.99	6.52	4.66	2.68	2.05	66.19

1) California Irrigation Management Information System (CIMIS), <http://www.cimis.water.ca.gov/cimis/welcome.jsp>, EvapoTranspiration (Eto) Zones Map, Zone 17, Statin 197, Palmdale

California Water Service Company - Antelope Valley District Water Supply and Demand Analysis and Projections

Worksheet 20

Precipitaion Data

Station:(046624) PALMDALE														
From Year=1903 To Year=2010														
	Precipitation										Total Snowfall			
	Mean	High	Year	Low	Year	1 Day Max.		>=	>=	>=	>=	Mean	High	Year
	in.	in.	-	in.	-	in.	dd/yyyy or yyyymmdd	# Days	# Days	# Days	# Days	in.	in.	-
January	1	8	1993	0	1945	2.44	18/1952	4	3	1	0	1	19	1,974
February	2	7	1944	0	1933	2.43	22/1944	4	3	1	0	0	4	1,944
March	1	5	1983	0	1933	2.39	3/1938	4	3	1	0	0	2	1,937
April	0	2	1982	0	1920	1.05	16/1903	2	1	0	0	0	0	1,931
May	0	2	1930	0	1903	1.1	8/1977	1	1	0	0	0	0	1,931
June	0	1	1987	0	1903	0.6	6/1987	0	0	0	0	0	0	1,931
July	0	1	2010	0	1903	0.68	16/2010	0	0	0	0	0	0	1,931
August	0	1	1968	0	1903	1.46	7/1968	1	0	0	0	0	0	1,931
September	0	2	1976	0	1903	1.63	10/1976	1	0	0	0	0	0	1,931
October	0	4	2004	0	1903	1.78	27/2004	1	1	0	0	0	0	1,932
November	1	6	1965	0	1903	1.89	22/1965	2	1	0	0	0	10	1,964
December	1	8	1943	0	1930	3.43	11/1943	4	3	1	0	0	4	1,955
Annual	8	18	1941	1.35	1985	3.43	19431211	25	16	5	2	1	19	1,974

California Water Service Company - Antelope Valley District Water Supply and Demand Analysis and Projections

Groundwater Production Facilities

Location	Well No.	Design Capacity (gpm)	
		Active	Inactive
LANCASTER	Well 1-01	485	unk
	Well 1-02		
	Well 1-03	600	
FREMONT VALLEY	Well 1-01	110	
LEONA VALLEY	Well 1-05	70	
	Well 1-07	30	
LAKE HUGHES	Well 1-01	50	70
	Well 1-02	60	
	Well 2-01		
	Well 2-02	75	
Total units:	10	8	2

Design Capacity (GPM)	1,550	1,480	70
-----------------------	-------	-------	----

Design Capacity (MGD)	2.2	2.1	0.1
-----------------------	-----	-----	-----

Design Capacity (AFY)	2,500	2,387	113
-----------------------	-------	-------	-----

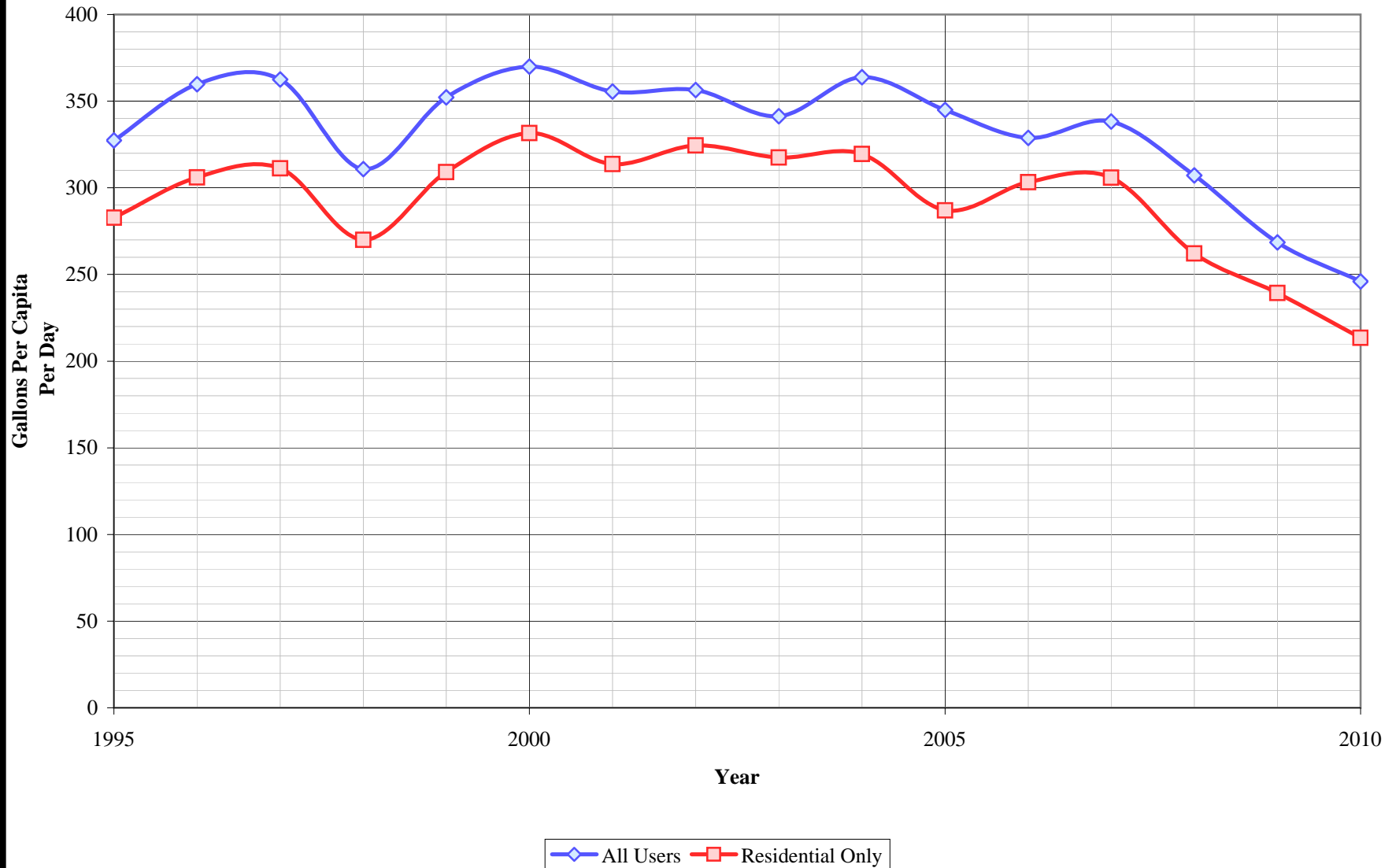
Notes:

1) Listed pump capacities on this worksheet represent design flowrates, actual flowrates are highly dependent on local system pressures, well characteristics, and other design criteria

2) Values in bold are estimated

Updated 1/1/2011

Antelope Valley District Per Capita Consumption



California Water Service Company - Antelope Valley District
Water Supply and Demand Analysis and Projections

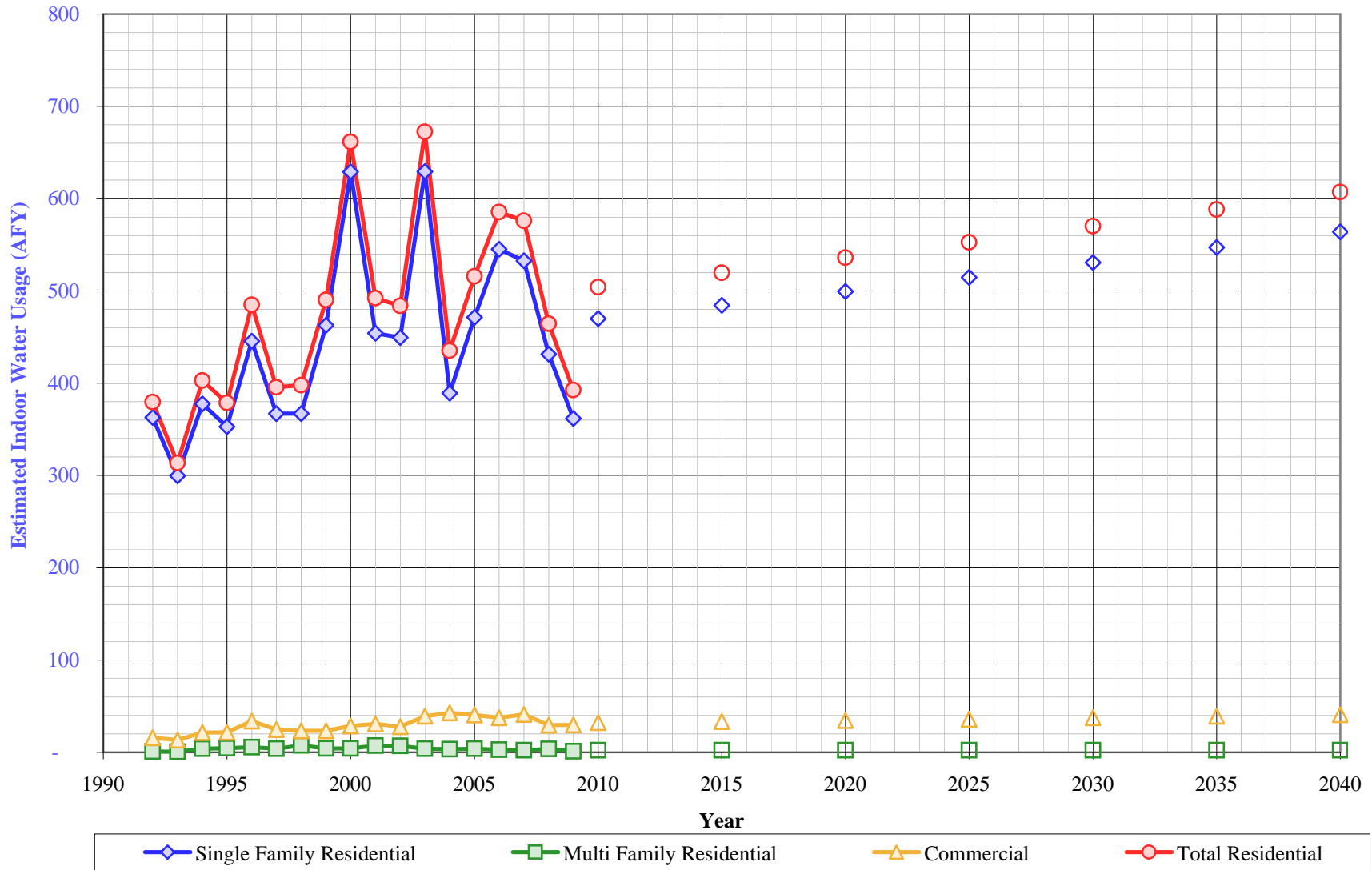
Per Capita Water Demand

Year	Usage - All Users			Usage - Residential Only		
	AFY	MGY	Gallons Per Capita Per Day	AFY	MGY	Gallons Per Capita Per Day
1995	1,103	359	327.4	953	310	282.7
1996	1,215	396	359.7	1,034	337	306.0
1997	1,233	402	362.5	1,058	345	311.2
1998	1,057	344	310.8	918	299	270.0
1999	1,212	395	352.2	1,063	346	309.0
2000	1,287	419	369.9	1,154	376	331.6
2001	1,245	406	355.6	1,098	358	313.8
2002	1,244	405	356.4	1,132	369	324.4
2003	1,185	386	341.3	1,102	359	317.4
2004	1,359	443	363.8	1,193	389	319.4
2005	1,308	426	345.0	1,088	355	286.9
2006	1,258	410	328.9	1,160	378	303.2
2007	1,307	426	338.3	1,182	385	305.9
2008	1,175	383	307.2	1,003	327	262.0
2009	1,021	333	268.5	911	297	239.3
2010	944	307	246.1	818	267	213.4
5 Yr. Avg.	1,141	372	297.8	1,015	331	264.8
10 Yr. Avg.	1,205	393	325.1	1,069	348	288.6

Five year average is from years 2006 through 2010.

Ten year average is from years 2001 through 2010.

Antelope Valley District Estimated Indoor Water Usage



**California Water Service Company - Antelope Valley District
Water Supply and Demand Analysis and Projections**

Estimated Indoor/Outdoor Water Usage

Year	Single Family Residential (SFR)							Multi Family Residential (MFR)				Commercial (COM)				Est. Indoor Usage AFY
	Metered Single Family Residential Indoor Use (Annualized 90% of January Total)			Indoor Flat Rate Usage (AFY)	Total SFR Indoor Usage			Multi Family Residential January Usage (CCF)	Multi Family Residential Indoor Use (Annualized 90% of January Total)			Commercial (CCF)	Commercial Indoor Use (Annualized 90% of January Total)			
	JAN (CCF)	AFY	AFY/Service		AFY	GPD/Service	%		AFY	GPD/Service	%		AFY	GPD/Service	%	
1990																
1991																
1992	14,632	363	0.31	0	363	276	41%	32	0.79	229	40%	642	16	458	48%	379
1993	12,080	300	0.26	0	300	228	33%	20	0.50	78	14%	542	13	385	37%	313
1994	15,228	378	0.32	0	378	288	40%	155	3.84	323	96%	866	21	608	59%	403
1995	14,226	353	0.30	0	353	270	37%	178	4.41	358	96%	868	22	611	54%	379
1996	17,964	445	0.38	0	445	339	43%	223	5.53	494	122%	1,367	34	946	75%	485
1997	14,801	367	0.31	0	367	278	35%	158	3.92	356	80%	997	25	700	60%	396
1998	14,804	367	0.31	0	367	277	40%	300	7.44	769	152%	935	23	660	63%	398
1999	18,668	463	0.39	0	463	345	44%	169	4.19	424	109%	939	23	602	66%	490
2000	25,366	629	0.52	0	629	464	55%	169	4.19	392	88%	1,149	28	784	67%	662
2001	18,313	454	0.37	0	454	334	42%	295	7.31	684	89%	1,247	31	863	70%	492
2002	18,126	449	0.37	0	449	333	40%	279	6.92			1,115	28	748	69%	484
2003	25,381	629	0.53	0	629	474	57%	160	3.97			1,574	39	917	73%	672
2004	15,692	389	0.31	0	389	274	33%	139	3.45	513	170%	1,726	43	980	86%	435
2005	19,012	471	0.37	0	471	326	43%	161	3.99	594	175%	1,632	40	951	77%	516
2006	21,992	545	0.42	0	545	373	47%	112	2.78	413	159%	1,507	37	902	69%	585
2007	21,485	533	0.40	0	533	361	45%	88	2.18	325	105%	1,658	41	1,019	74%	576
2008	17,397	431	0.33	0	431	294	43%	140	3.47	516	217%	1,189	29	711	59%	464
2009	14,585	362	0.28	0	362	249	40%	50	1.24	184	115%	1,199	30	698	57%	393
2010	-	-	-	-	470	321	42%	-	2.10	312	86%	-	32	752	65%	504
2015	-	-	-	-	484	321	42%	-	2.10	312	86%	-	33	752	65%	520
2020	-	-	-	-	499	321	42%	-	2.10	312	86%	-	35	752	65%	536
2025	-	-	-	-	515	321	42%	-	2.10	312	86%	-	36	752	65%	553
2030	-	-	-	-	531	321	42%	-	2.10	312	86%	-	37	752	65%	570
2035	-	-	-	-	547	321	42%	-	2.10	312	86%	-	39	752	65%	588
2040	-	-	-	-	564	321	42%	-	2.10	312	86%	-	41	752	65%	607

Note: MFR estimates appear erroneous possibly due to bi-monthly bill schedule and seasonal vacancy of dwelling units. Projections based on 75% of average GOD/Service

California Water Service Company - Antelope Valley District

Water Supply and Demand Analysis and Projections

Comparison of Projected Demand and Conservation Savings Between SBx7-7 Compliance Targets and Actual Proposed Programs

Year	SBx7-7 Compliance Target (gpcd)	Anticipated GPCD with Proposed Programs*	Estimated Population	Undadjusted Baseline Demand (AFY)	SBx7-7 Compliance Target Demand (AFY)	Anticipated Demand with Proposed Programs (AFY)	Compliance Target Savings Requirement (AFY)	Savings Due to Proposed Programs (AFY)
2005-2009								
Average	318	318	3,412	1,214	1,214	1,214	0	0
2010	318	318	3,423	1,218	1,218	1,218	0	0
2011	314	312	3,444	1,225	1,212	1,204	13	22
2012	311	306	3,465	1,233	1,206	1,188	27	45
2013	307	301	3,486	1,240	1,200	1,175	41	65
2014	304	300	3,507	1,248	1,193	1,179	54	69
2015	300	298	3,528	1,255	1,187	1,178	68	77
2016	297	291	3,550	1,263	1,180	1,157	83	105
2017	293	284	3,571	1,271	1,174	1,137	97	134
2018	290	277	3,593	1,278	1,167	1,116	111	162
2019	286	270	3,615	1,286	1,160	1,095	126	191
2020	283	283	3,637	1,294	1,153	1,153	141	141
2021	283	283	3,659	1,302	1,160	1,160	142	142
2022	283	283	3,681	1,310	1,167	1,167	143	143
2023	283	283	3,703	1,317	1,174	1,174	144	144
2024	283	283	3,726	1,325	1,181	1,181	144	144
2025	283	283	3,748	1,334	1,188	1,188	145	145
2026	283	283	3,771	1,342	1,195	1,195	146	146
2027	283	283	3,794	1,350	1,203	1,203	147	147
2028	283	283	3,817	1,358	1,210	1,210	148	148
2029	283	283	3,840	1,366	1,217	1,217	149	149
2030	283	283	3,864	1,375	1,225	1,225	150	150
2031	283	283	3,887	1,383	1,232	1,232	151	151
2032	283	283	3,911	1,391	1,240	1,240	152	152
2033	283	283	3,935	1,400	1,247	1,247	153	153
2034	283	283	3,959	1,408	1,255	1,255	153	153
2035	283	283	3,983	1,417	1,263	1,263	154	154
2036	283	283	4,007	1,426	1,270	1,270	155	155
2037	283	283	4,031	1,434	1,278	1,278	156	156
2038	283	283	4,056	1,443	1,286	1,286	157	157
2039	283	283	4,081	1,452	1,294	1,294	158	158
2040	283	283	4,106	1,461	1,301	1,301	159	159

*Note: The district is projected to achieve its district-specific 2015 SBx7-7 compliance target through a combination of passive and active savings. For the purpose of this analysis it is assumed that there will be a linear reduction in GPCD from 2015-2020 to achieve the district-specific 2020 SBx7-7 compliance target. GPCD will remain flat from 2020 through 2040.