

Water Resources Planning Department

Water Supply / Demand Analysis and Projections
for
East Los Angeles District

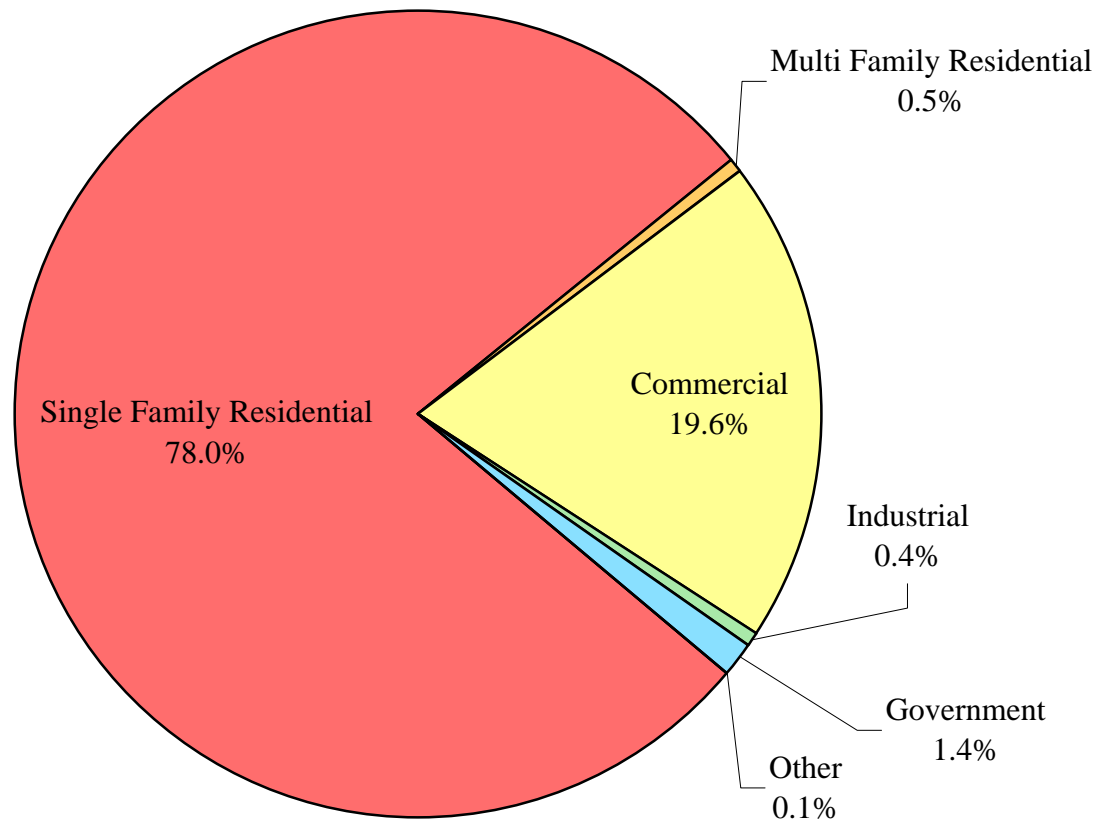
2010



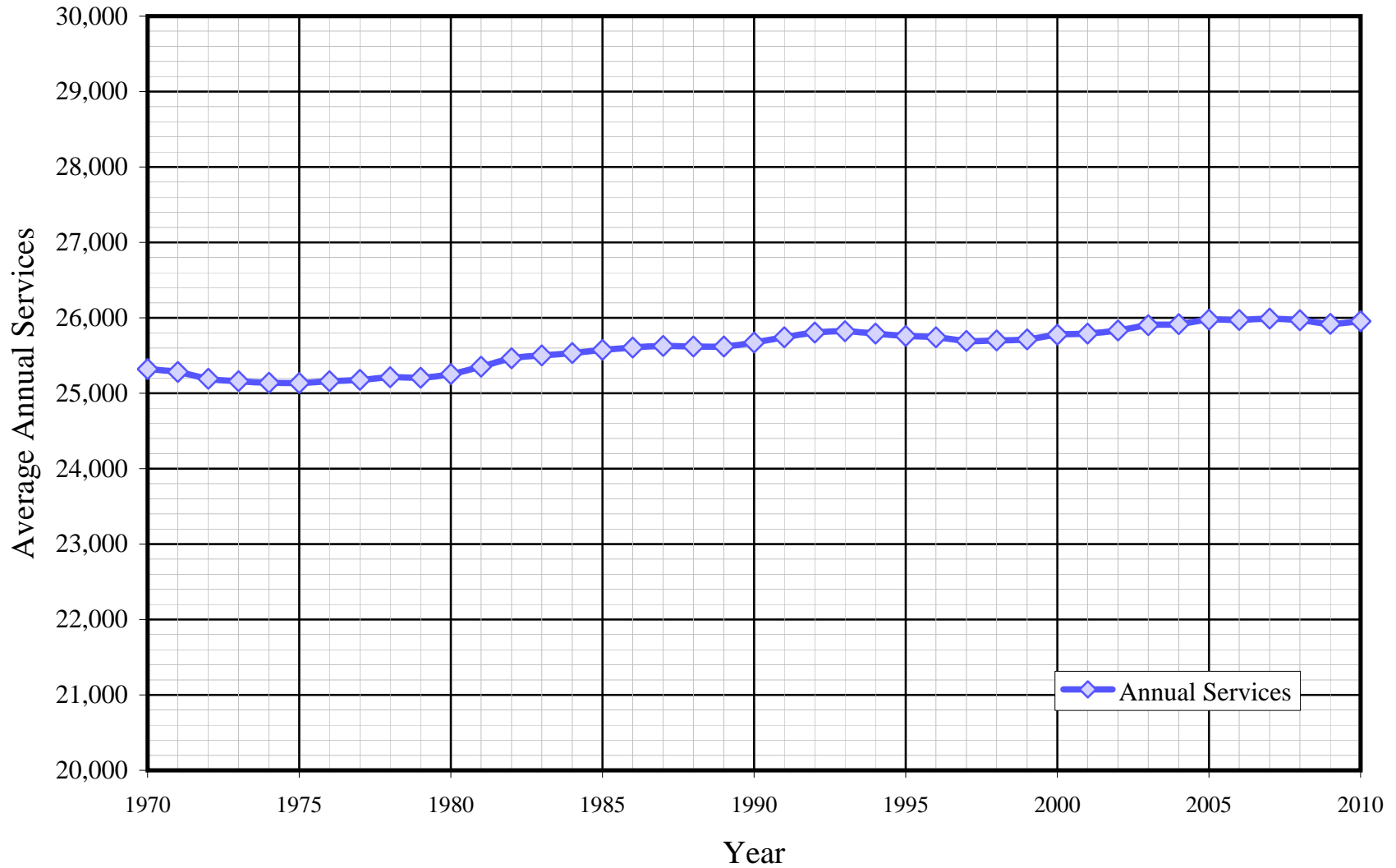
Table of Contents for Worksheets

Worksheet	Title
1	Annual Services
2	Service Growth Percentage
3	District Sales (ccf)
4	District Sales (AF)
5	Demand per Service (Gallons/Service/Year)
6	Demand per Service (Gallons per Day)
7	Percentage Change in Annual Demand
8	Percentage of Total Sales
9	Percentage of Total Demand
10	Demand Scenario 1 (Low Demand Projection)
11	Demand Scenario 2 (Average Demand Projection)
12	Demand Scenario 3 (High Demand Projection)
13	Demand Scenario 4 (Alternate Service Projection)
14	Not used
15	Actual & Projected Annual Average Services
16	Actual & Projected Demand in Acre-Feet
17	Projected Annual Supply by Source
18	Historical and Projected Average Day, Maximum Day, and Peak Demands
19	Population as of the 2000 Average Annual Services
20	Temperature & Rainfall History
21	Groundwater Facilities (if available)
22	Per Capita Water Demand Calculation
23	Indoor/Outdoor Water Usage
24	SB-7 Compliance Demand Worksheet

East Los Angeles District Distribution of Services (2010)



East Los Angeles District Historical Annual Services



California Water Service Company - East Los Angeles District

Worksheet 2

Water Supply and Demand Analysis and Projections

Service Growth Percentage

Year	Multi-Residential		Multi-Res.	Commercial	Industrial	Government	Other	Total
	Residential	Residential	units					
1981	0.34%	1.57%	1.81%	0.56%	-0.33%	0.61%	14.29%	0.39%
1982	0.45%	1.55%	1.72%	0.58%	-1.34%	-0.30%	-37.50%	0.44%
1983	0.10%	0.00%	0.81%	0.45%	-1.36%	0.61%	0.00%	0.15%
1984	0.12%	0.76%	0.06%	0.22%	0.00%	-1.22%	0.00%	0.12%
1985	0.13%	0.76%	0.12%	0.24%	-0.69%	0.00%	100.00%	0.16%
1986	0.09%	0.75%	0.80%	0.12%	-1.38%	2.46%	0.00%	0.11%
1987	0.13%	0.00%	0.12%	-0.06%	0.00%	0.00%	-20.00%	0.08%
1988	-0.02%	0.00%	0.00%	-0.08%	0.70%	1.50%	-50.00%	-0.02%
1989	0.04%	0.00%	0.00%	-0.22%	-1.74%	1.48%	75.00%	0.00%
1990	0.15%	-0.75%	-0.37%	0.28%	-0.35%	1.75%	85.71%	0.21%
1991	0.39%	1.50%	2.83%	2.45%	-43.42%	-2.87%	0.00%	0.26%
1992	0.39%	0.74%	1.50%	0.12%	-16.35%	0.59%	0.00%	0.24%
1993	0.08%	0.00%	0.12%	-0.04%	1.50%	0.88%	-15.38%	0.07%
1994	-0.04%	0.00%	-0.12%	-0.53%	-0.74%	0.87%	18.18%	-0.12%
1995	0.05%	0.00%	0.00%	-0.36%	-0.75%	-5.19%	-38.46%	-0.12%
1996	0.00%	0.00%	0.18%	-0.34%	0.75%	-1.82%	37.50%	-0.07%
1997	-0.16%	0.00%	-0.18%	-0.26%	-2.99%	0.31%	-9.09%	-0.19%
1998	0.02%	0.00%	0.24%	-0.10%	2.31%	0.31%	30.00%	0.03%
1999	0.05%	0.00%	0.06%	-0.08%	0.75%	1.23%	23.08%	0.05%
2000	0.36%	0.00%	0.00%	-0.04%	0.00%	-1.52%	-12.50%	0.25%
2001	0.09%	0.00%	-0.29%	0.10%	-0.75%	-1.54%	-14.29%	0.06%
2002	0.24%	0.00%	-0.06%	-0.10%	-2.26%	0.31%	0.00%	0.16%
2003	0.27%	0.00%	4.19%	0.28%	-3.08%	0.31%	25.00%	0.27%
2004	0.01%	0.00%	4.99%	-0.02%	0.00%	2.17%	26.67%	0.05%
2005	0.24%	0.00%	-0.43%	0.16%	0.79%	0.77%	5.26%	0.24%
2006	0.05%	0.00%	0.22%	-0.26%	-1.57%	0.76%	-10.00%	-0.02%
2007	0.07%	-0.74%	-6.11%	-0.02%	-0.80%	0.00%	27.78%	0.06%
2008	-0.38%	0.74%	-0.52%	0.94%	-4.03%	4.50%	4.35%	-0.07%
2009	-0.53%	-0.74%	0.00%	0.97%	-4.20%	5.17%	-16.67%	-0.20%
2010	0.24%	0.00%	-100.00%	-0.04%	-1.75%	-1.37%	-25.00%	0.13%
5 Yr. Avg.	-0.11%	-0.15%	-1.37%	0.36%	-1.96%	2.24%	2.14%	0.00%
10 Yr. Avg.	0.04%	-0.07%	0.20%	0.20%	-1.59%	1.09%	3.56%	0.08%
15 Yr. Avg.	0.03%	-0.05%	0.15%	0.06%	-1.06%	0.38%	5.24%	0.03%

Five year average = 2005 through 2009.

Ten year average = 2000 through 2009.

Fifteen year average = 1995 through 2009

California Water Service Company - East Los Angeles District
Water Supply and Demand Analysis and Projections
Annual Services

Worksheet 1

Year	Residential	Multi-Residential	Multi-Res. units	Commercial	Industrial	Government	Other	Total	Annual Change
1970	20,095	0	0	4,637	307	266	15	25,320	
1971	20,017	0	0	4,671	305	275	14	25,282	-38
1972	19,880	0	0	4,715	303	281	11	25,190	-92
1973	19,790	0	0	4,765	304	289	12	25,160	-30
1974	19,715	119	1,422	4,688	302	305	9	25,138	-22
1975	19,671	119	1,395	4,727	300	312	7	25,136	-2
1976	19,662	119	1,398	4,760	301	314	4	25,160	24
1977	19,655	122	1,480	4,776	302	320	4	25,179	19
1978	19,661	125	1,523	4,786	306	328	6	25,212	33
1979	19,656	126	1,532	4,797	302	317	6	25,204	-8
1980	19,664	127	1,544	4,831	300	326	7	25,255	51
1981	19,731	129	1,572	4,858	299	328	8	25,353	98
1982	19,820	131	1,599	4,886	295	327	5	25,464	111
1983	19,839	131	1,612	4,908	291	329	5	25,503	39
1984	19,862	132	1,613	4,919	291	325	5	25,534	31
1985	19,888	133	1,615	4,931	289	325	10	25,576	42
1986	19,906	134	1,628	4,937	285	333	10	25,605	29
1987	19,932	134	1,630	4,934	285	333	8	25,626	21
1988	19,928	134	1,630	4,930	287	338	4	25,621	-5
1989	19,935	134	1,630	4,919	282	343	7	25,620	-1
1990	19,965	133	1,624	4,933	281	349	13	25,674	54
1991	20,042	135	1,670	5,054	159	339	13	25,742	68
1992	20,121	136	1,695	5,060	133	341	13	25,804	62
1993	20,138	136	1,697	5,058	135	344	11	25,822	18
1994	20,129	136	1,695	5,031	134	347	13	25,790	-32
1995	20,140	136	1,695	5,013	133	329	8	25,759	-31
1996	20,141	136	1,698	4,996	134	323	11	25,741	-18
1997	20,109	136	1,695	4,983	130	324	10	25,692	-49
1998	20,114	136	1,699	4,978	133	325	13	25,699	7
1999	20,124	136	1,700	4,974	134	329	16	25,713	14
2000	20,197	136	1,700	4,972	134	324	14	25,777	64
2001	20,215	136	1,695	4,977	133	319	12	25,792	15
2002	20,264	136	1,694	4,972	130	320	12	25,834	42
2003	20,319	136	1,765	4,986	126	321	15	25,903	69
2004	20,321	136	1,853	4,985	126	328	19	25,915	12
2005	20,371	136	1,845	4,993	127	331	20	25,977	62
2006	20,381	136	1,849	4,980	125	333	18	25,973	-4
2007	20,395	135	1,736	4,979	124	333	23	25,989	16
2008	20,317	136	1,727	5,026	119	348	24	25,970	-19
2009	20,209	135	1,727	5,075	114	366	20	25,919	-51
2010	20,257	135	0	5,073	112	361	15	25,953	34
5 Yr Avg.	20,335	136	1,777	5,011	122	342	21	25,966	1
10 Yr Avg.	20,299	136	1,759	4,995	126	332	18	25,905	21
15 Yr. Avg.	20,241	136	1,739	4,993	128	330	16	25,844	9

Five year average = 2005 through 2009.

Ten year average = 2000 through 2009.

Fifteen year average = 1995 through 2009

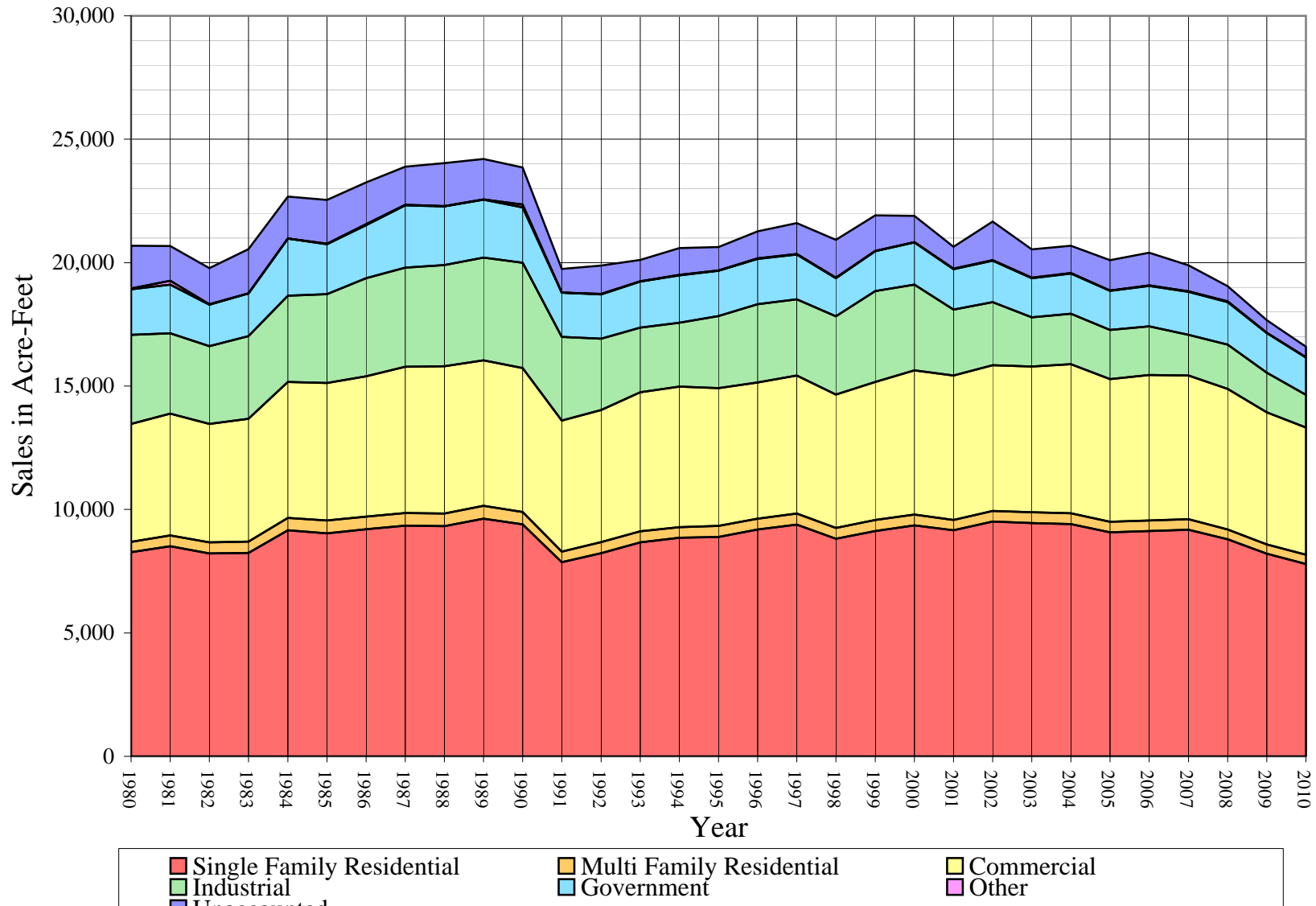
California Water Service Company - East Los Angeles District
Water Supply and Demand Analysis and Projections
Sales(ccf)

Worksheet 3

Year	Multi-						Unaccounted Water	Total(ccf) Sales	Total(ccf) Demand	Total(kgal) Demand
	Residential	Residential	Commercial	Industrial	Government	Other				
1980	3,601,531	184,156	2,081,772	1,569,754	806,790	10,021	756,086	8,254,024	9,010,110	6,740,031
1981	3,708,460	189,957	2,150,771	1,416,603	858,030	69,125	612,131	8,392,946	9,005,077	6,736,266
1982	3,580,376	193,931	2,092,588	1,372,104	731,716	6,295	639,415	7,977,010	8,616,425	6,445,534
1983	3,590,426	200,437	2,167,761	1,455,631	753,718	2,247	782,051	8,170,220	8,952,271	6,696,764
1984	3,990,047	219,228	2,398,127	1,523,710	1,004,851	2,768	738,191	9,138,731	9,876,922	7,388,451
1985	3,935,929	224,347	2,428,538	1,567,680	882,092	7,675	770,718	9,046,261	9,816,979	7,343,611
1986	4,008,128	224,237	2,474,824	1,732,895	935,261	15,369	735,483	9,390,714	10,126,197	7,574,922
1987	4,072,035	222,703	2,578,112	1,749,265	1,103,155	7,143	672,749	9,732,413	10,405,162	7,783,602
1988	4,063,184	222,876	2,598,828	1,783,072	1,038,574	2,955	758,369	9,709,489	10,467,858	7,830,502
1989	4,192,605	226,457	2,567,884	1,814,818	1,023,414	2,117	714,800	9,827,295	10,542,095	7,886,035
1990	4,095,106	218,509	2,539,985	1,857,597	978,457	45,914	655,534	9,735,568	10,391,102	7,773,085
1991	3,426,897	186,547	2,310,290	1,477,896	779,787	2,811	416,195	8,184,228	8,600,423	6,433,564
1992	3,584,951	194,244	2,330,890	1,261,378	781,450	9,638	498,330	8,162,551	8,660,881	6,478,789
1993	3,774,113	194,946	2,456,095	1,140,163	815,706	2,604	375,336	8,383,627	8,758,963	6,552,160
1994	3,855,965	185,916	2,482,458	1,127,695	838,062	5,667	475,317	8,495,763	8,971,080	6,710,834
1995	3,872,662	194,525	2,428,826	1,272,549	803,331	2,484	414,245	8,574,377	8,988,622	6,723,957
1996	4,000,932	193,168	2,404,991	1,378,023	801,941	10,883	477,035	8,789,938	9,266,973	6,932,178
1997	4,088,414	195,430	2,438,465	1,340,813	794,035	9,018	543,941	8,866,175	9,410,116	7,039,256
1998	3,839,670	188,929	2,353,655	1,381,666	675,232	8,391	667,361	8,447,543	9,114,904	6,818,422
1999	3,976,047	194,662	2,437,151	1,600,655	705,092	4,774	630,292	8,918,381	9,548,673	7,142,904
2000	4,073,759	192,707	2,546,525	1,510,060	746,005	4,486	462,415	9,073,542	9,535,957	7,133,392
2001	3,987,797	185,574	2,546,892	1,162,565	713,488	7,662	386,258	8,603,978	8,990,236	6,725,164
2002	4,144,369	185,449	2,570,177	1,113,224	732,832	10,161	680,664	8,756,212	9,436,876	7,059,274
2003	4,114,548	192,254	2,570,489	871,462	690,745	6,267	498,844	8,445,765	8,944,609	6,691,033
2004	4,097,220	192,943	2,631,271	890,721	705,471	10,164	482,934	8,527,790	9,010,724	6,740,490
2005	3,952,105	188,319	2,515,526	869,153	690,759	5,844	534,352	8,221,706	8,756,058	6,549,987
2006	3,977,678	185,385	2,566,552	858,512	713,736	8,812	577,616	8,310,675	8,888,291	6,648,904
2007	4,000,537	184,460	2,535,635	715,366	761,946	8,712	460,383	8,206,656	8,667,039	6,483,396
2008	3,832,326	172,823	2,477,264	785,126	746,333	12,963	271,855	8,026,835	8,298,690	6,207,852
2009	3,574,406	164,184	2,332,877	698,594	699,024	7,511	219,667	7,476,596	7,696,263	5,757,205
2010	3,395,261	160,419	2,244,513	577,774	660,954	4,097	184,616	7,043,018	7,227,634	5,406,646
5 Yr Avg.	3,867,410	179,034	2,485,571	785,350	722,360	8,768	412,775	8,048,494	8,461,268	6,329,469
10 Yr Avg.	3,975,475	184,410	2,529,321	947,478	720,034	8,258	457,499	8,364,976	8,822,474	6,599,670

Five year average = 2005 through 2009. Ten year average = 2000 through 2009.

East Los Angeles District Historical Sales



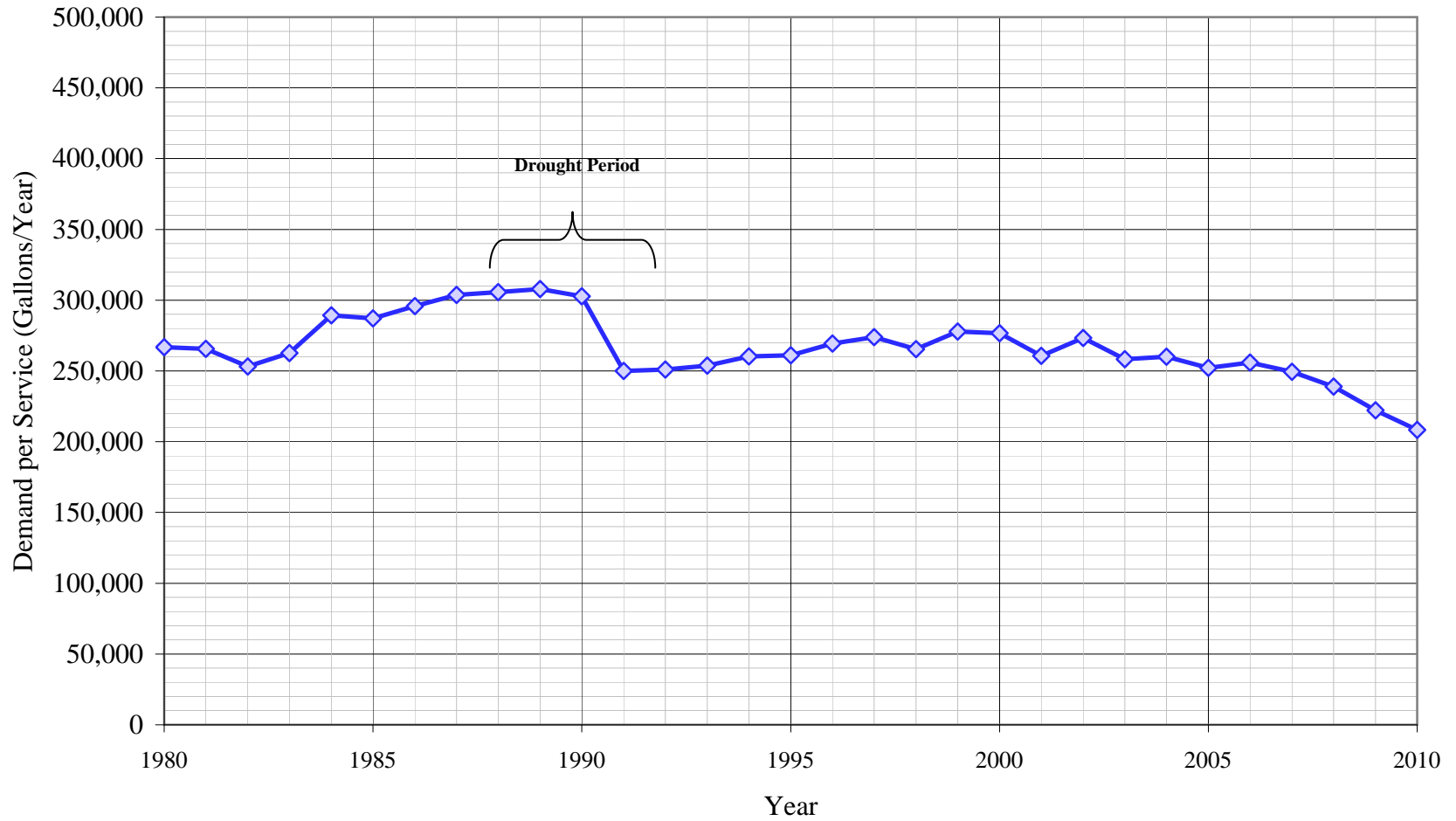
California Water Service Company - East Los Angeles District
Water Supply and Demand Analysis and Projections
Sales(AF)

Worksheet 4

Year	Multi-							Unaccounted Water	Total(AF) Sales	Total(AF) Demand	Total(Mgal) Demand
	Residential	Residential	Commercial	Industrial	Government	Other					
1980	8,268	423	4,779	3,604	1,852	23	1,736	18,949	20,684	6,740	
1981	8,513	436	4,937	3,252	1,970	159	1,405	19,268	20,673	6,736	
1982	8,219	445	4,804	3,150	1,680	14	1,468	18,313	19,781	6,446	
1983	8,242	460	4,976	3,342	1,730	5	1,795	18,756	20,552	6,697	
1984	9,160	503	5,505	3,498	2,307	6	1,695	20,980	22,674	7,388	
1985	9,036	515	5,575	3,599	2,025	18	1,769	20,767	22,537	7,344	
1986	9,201	515	5,681	3,978	2,147	35	1,688	21,558	23,247	7,575	
1987	9,348	511	5,919	4,016	2,532	16	1,544	22,343	23,887	7,784	
1988	9,328	512	5,966	4,093	2,384	7	1,741	22,290	24,031	7,830	
1989	9,625	520	5,895	4,166	2,349	5	1,641	22,560	24,201	7,886	
1990	9,401	502	5,831	4,264	2,246	105	1,505	22,350	23,855	7,773	
1991	7,867	428	5,304	3,393	1,790	6	955	18,788	19,744	6,434	
1992	8,230	446	5,351	2,896	1,794	22	1,144	18,739	19,883	6,479	
1993	8,664	448	5,638	2,617	1,873	6	862	19,246	20,108	6,552	
1994	8,852	427	5,699	2,589	1,924	13	1,091	19,504	20,595	6,711	
1995	8,890	447	5,576	2,921	1,844	6	951	19,684	20,635	6,724	
1996	9,185	443	5,521	3,164	1,841	25	1,095	20,179	21,274	6,932	
1997	9,386	449	5,598	3,078	1,823	21	1,249	20,354	21,603	7,039	
1998	8,815	434	5,403	3,172	1,550	19	1,532	19,393	20,925	6,818	
1999	9,128	447	5,595	3,675	1,619	11	1,447	20,474	21,921	7,143	
2000	9,352	442	5,846	3,467	1,713	10	1,062	20,830	21,892	7,133	
2001	9,155	426	5,847	2,669	1,638	18	887	19,752	20,639	6,725	
2002	9,514	426	5,900	2,556	1,682	23	1,563	20,101	21,664	7,059	
2003	9,446	441	5,901	2,001	1,586	14	1,145	19,389	20,534	6,691	
2004	9,406	443	6,041	2,045	1,620	23	1,109	19,577	20,686	6,740	
2005	9,073	432	5,775	1,995	1,586	13	1,227	18,874	20,101	6,550	
2006	9,131	426	5,892	1,971	1,639	20	1,326	19,079	20,405	6,649	
2007	9,184	423	5,821	1,642	1,749	20	1,057	18,840	19,897	6,483	
2008	8,798	397	5,687	1,802	1,713	30	624	18,427	19,051	6,208	
2009	8,206	377	5,356	1,604	1,605	17	504	17,164	17,668	5,757	
2010	7,794	368	5,153	1,326	1,517	9	424	16,169	16,592	5,407	
5 Yr Avg.	8,878	411	5,706	1,803	1,658	20	948	18,477	19,424	6,329	
10 Yr Avg.	9,126	423	5,807	2,175	1,653	19	1,050	19,203	20,254	6,600	

Five year average = 2005 through 2009. Ten year average = 2000 through 2009.

East Los Angeles District Historic Demand Per Service



California Water Service Company - East Los Angeles District
Water Supply and Demand Analysis and Projections
Demand per Service (Gallons per Year)

Worksheet 5

Year	Multi-Residential			Commercial	Industrial	Government	Total Other	Unaccounted/ Total Services	Combined Demand/Serv
	Residential	(service)	(unit)						
1980	137,008	1,084,711	89,222	322,350	3,914,192	1,851,291	1,070,890	22,395	266,879
1981	140,597	1,101,533	90,393	331,183	3,544,123	1,956,863	6,463,637	18,061	265,699
1982	135,132	1,107,408	90,726	320,378	3,479,339	1,673,889	941,797	18,784	253,123
1983	135,381	1,144,560	93,013	330,399	3,741,882	1,713,739	336,175	22,939	262,587
1984	150,275	1,242,378	101,670	364,693	3,916,888	2,312,864	414,122	21,626	289,357
1985	148,043	1,261,829	103,915	368,419	4,057,807	2,030,310	574,130	22,542	287,129
1986	150,622	1,251,798	103,035	374,984	4,548,406	2,100,973	1,149,681	21,487	295,838
1987	152,824	1,243,235	102,205	390,872	4,591,373	2,478,130	667,917	19,638	303,738
1988	152,523	1,244,200	102,284	394,332	4,647,493	2,298,542	552,623	22,142	305,628
1989	157,326	1,264,191	103,927	390,508	4,814,107	2,231,973	226,232	20,871	307,808
1990	153,436	1,228,993	100,650	385,169	4,945,122	2,097,240	2,642,005	19,100	302,761
1991	127,906	1,033,680	83,561	341,950	6,953,101	1,720,712	161,752	12,094	249,925
1992	133,280	1,068,416	85,725	344,590	7,094,559	1,714,268	554,594	14,446	251,077
1993	140,194	1,072,278	85,934	363,244	6,317,787	1,773,810	177,084	10,873	253,743
1994	143,299	1,022,609	82,050	369,113	6,295,332	1,806,668	326,093	13,787	260,211
1995	143,841	1,069,962	85,849	362,435	7,157,390	1,826,545	232,270	12,030	261,033
1996	148,598	1,062,498	85,100	360,100	7,692,783	1,857,256	740,095	13,863	269,305
1997	152,088	1,074,940	86,249	366,064	7,715,368	1,833,270	674,593	15,837	273,986
1998	142,800	1,039,182	83,183	353,687	7,771,113	1,554,180	482,839	19,426	265,319
1999	147,798	1,070,715	85,657	366,529	8,935,621	1,603,178	223,200	18,337	277,793
2000	150,883	1,059,962	84,797	383,132	8,429,876	1,722,378	239,697	13,419	276,735
2001	147,568	1,020,728	81,899	382,802	6,538,790	1,673,123	477,631	11,203	260,746
2002	152,991	1,020,040	81,892	386,691	6,405,765	1,713,114	633,413	19,709	273,255
2003	151,479	1,057,471	81,482	385,652	5,173,801	1,609,698	312,536	14,406	258,311
2004	150,826	1,061,260	77,891	394,853	5,288,140	1,609,134	400,168	13,940	260,101
2005	145,130	1,035,827	76,354	376,864	5,119,462	1,563,460	218,581	15,387	252,143
2006	145,994	1,019,688	75,001	385,525	5,137,693	1,603,338	366,213	16,636	255,993
2007	146,733	1,022,116	79,485	380,957	4,315,572	1,711,637	283,349	13,251	249,467
2008	141,102	950,593	74,858	368,707	4,935,421	1,604,299	404,042	7,831	239,039
2009	132,309	909,764	71,116	343,865	4,584,076	1,428,706	280,931	6,340	222,123
2010	125,380	888,902		330,970	3,858,973	1,369,607	204,318	5,321	208,325
5 Yr. Avg.	142,254	987,598	75,363	371,184	4,818,445	1,582,288	310,623	11,889	243,753
10 Yr. Avg.	146,501	1,015,745	78,478	378,905	5,592,860	1,623,889	361,656	13,212	254,791

Five year average = 2005 through 2009.

Ten year average = 2000 through 2009.

California Water Service Company - East Los Angeles District
Water Supply and Demand Analysis and Projections
Demand per Service (Gallons per Day)

Worksheet 6

Year	Residential	Multi-Residential (service)	(unit)	Commercial	Industrial	Government	Total Other	Unaccounted/ Total Services	Combined Demand/Serv
1980	375	2,972	244	883	10,724	5,072	2,934	61	731
1981	385	3,018	248	907	9,710	5,361	17,709	49	728
1982	370	3,034	249	878	9,532	4,586	2,580	51	693
1983	371	3,136	255	905	10,252	4,695	921	63	719
1984	412	3,404	279	999	10,731	6,337	1,135	59	793
1985	406	3,457	285	1,009	11,117	5,562	1,573	62	787
1986	413	3,430	282	1,027	12,461	5,756	3,150	59	811
1987	419	3,406	280	1,071	12,579	6,789	1,830	54	832
1988	418	3,409	280	1,080	12,733	6,297	1,514	61	837
1989	431	3,464	285	1,070	13,189	6,115	620	57	843
1990	420	3,367	276	1,055	13,548	5,746	7,238	52	829
1991	350	2,832	229	937	19,050	4,714	443	33	685
1992	365	2,927	235	944	19,437	4,697	1,519	40	688
1993	384	2,938	235	995	17,309	4,860	485	30	695
1994	393	2,802	225	1,011	17,247	4,950	893	38	713
1995	394	2,931	235	993	19,609	5,004	636	33	715
1996	407	2,911	233	987	21,076	5,088	2,028	38	738
1997	417	2,945	236	1,003	21,138	5,023	1,848	43	751
1998	391	2,847	228	969	21,291	4,258	1,323	53	727
1999	405	2,933	235	1,004	24,481	4,392	612	50	761
2000	413	2,904	232	1,050	23,096	4,719	657	37	758
2001	404	2,797	224	1,049	17,914	4,584	1,309	31	714
2002	419	2,795	224	1,059	17,550	4,693	1,735	54	749
2003	415	2,897	223	1,057	14,175	4,410	856	39	708
2004	413	2,908	213	1,082	14,488	4,409	1,096	38	713
2005	398	2,838	209	1,033	14,026	4,283	599	42	691
2006	400	2,794	205	1,056	14,076	4,393	1,003	46	701
2007	402	2,800	218	1,044	11,823	4,689	776	36	683
2008	387	2,604	205	1,010	13,522	4,395	1,107	21	655
2009	362	2,493	195	942	12,559	3,914	770	17	609
2010	344	2,435		907	10,573	3,752	560	15	571
5 Yr. Avg.	390	2,706	206	1,017	13,201	4,335	851	33	668
10 Yr. Avg.	401	2,783	215	1,038	15,323	4,449	991	36	698

Five year average = 2005 through 2009.

Ten year average = 2000 through 2009.

Industrial demand per service averages adjusted due to reclassification of services in 1991.

California Water Service Company - East Los Angeles District
Water Supply and Demand Analysis and Projections
Percentage Change in Annual Demand

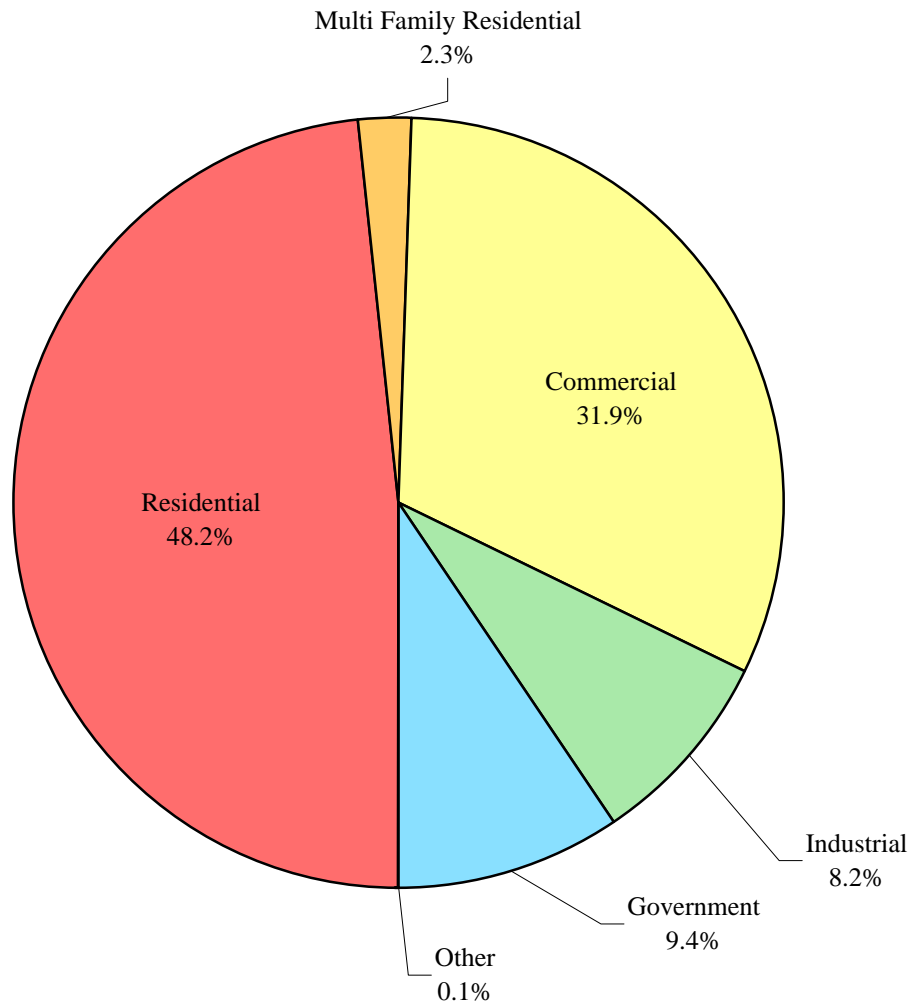
Worksheet 7

Year	Residential	Multi-Residential	Commercial	Industrial	Government	Other	Unaccounted Water	Total
1981	2.97%	3.15%	3.31%	-9.76%	6.35%	589.80%	-19.04%	-0.06%
1982	-3.45%	2.09%	-2.71%	-3.14%	-14.72%	-90.89%	4.46%	-4.32%
1983	0.28%	3.35%	3.59%	6.09%	3.01%	-64.31%	22.31%	3.90%
1984	11.13%	9.38%	10.63%	4.68%	33.32%	23.19%	-5.61%	10.33%
1985	-1.36%	2.34%	1.27%	2.89%	-12.22%	177.28%	4.41%	-0.61%
1986	1.83%	-0.05%	1.91%	10.54%	6.03%	100.25%	-4.57%	3.15%
1987	1.59%	-0.68%	4.17%	0.94%	17.95%	-53.52%	-8.53%	2.75%
1988	-0.22%	0.08%	0.80%	1.93%	-5.85%	-58.63%	12.73%	0.60%
1989	3.19%	1.61%	-1.19%	1.78%	-1.46%	-28.36%	-5.75%	0.71%
1990	-2.33%	-3.51%	-1.09%	2.36%	-4.39%	2068.82%	-8.29%	-1.43%
1991	-16.32%	-14.63%	-9.04%	-20.44%	-20.30%	-93.88%	-36.51%	-17.23%
1992	4.61%	4.13%	0.89%	-14.65%	0.21%	242.87%	19.73%	0.70%
1993	5.28%	0.36%	5.37%	-9.61%	4.38%	-72.98%	-24.68%	1.13%
1994	2.17%	-4.63%	1.07%	-1.09%	2.74%	117.63%	26.64%	2.42%
1995	0.43%	4.63%	-2.16%	12.85%	-4.14%	-56.17%	-12.85%	0.20%
1996	3.31%	-0.70%	-0.98%	8.29%	-0.17%	338.12%	15.16%	3.10%
1997	2.19%	1.17%	1.39%	-2.70%	-0.99%	-17.14%	14.03%	1.54%
1998	-6.08%	-3.33%	-3.48%	3.05%	-14.96%	-6.95%	22.69%	-3.14%
1999	3.55%	3.03%	3.55%	15.85%	4.42%	-43.11%	-5.55%	4.76%
2000	2.46%	-1.00%	4.49%	-5.66%	5.80%	-6.03%	-26.63%	-0.13%
2001	-2.11%	-3.70%	0.01%	-23.01%	-4.36%	70.80%	-16.47%	-5.72%
2002	3.93%	-0.07%	0.91%	-4.24%	2.71%	32.62%	76.22%	4.97%
2003	-0.72%	3.67%	0.01%	-21.72%	-5.74%	-38.32%	-26.71%	-5.22%
2004	-0.42%	0.36%	2.36%	2.21%	2.13%	62.18%	-3.19%	0.74%
2005	-3.54%	-2.40%	-4.40%	-2.42%	-2.09%	-42.50%	10.65%	-2.83%
2006	0.65%	-1.56%	2.03%	-1.22%	3.33%	50.79%	8.10%	1.51%
2007	0.57%	-0.50%	-1.20%	-16.67%	6.75%	-1.13%	-20.30%	-2.49%
2008	-4.20%	-6.31%	-2.30%	9.75%	-2.05%	48.79%	-40.95%	-4.25%
2009	-6.73%	-5.00%	-5.83%	-11.02%	-6.34%	-42.06%	-19.20%	-7.26%
2010	-5.01%	-2.29%	-3.79%	-17.29%	-5.45%	-45.45%	-15.96%	-6.09%
5 Yr. Avg.	-2.65%	-3.15%	-2.34%	-4.32%	-0.08%	2.78%	-12.34%	-3.06%
10 Yr. Avg.	-1.01%	-1.65%	-0.39%	-7.40%	0.01%	13.51%	-5.85%	-2.07%

Five year average is from years 2005 through 2009.

Ten year average is from years 2000 through 2009.

East Los Angeles District Percent of Total Sales by Type of Use (2010)



California Water Service Company - East Los Angeles District
Water Supply and Demand Analysis and Projections
Percentage of Total Sales

Worksheet 8

Year	Residential	Multi Family Residential	Commercial	Industrial	Government	Other	Percent Total
1980	43.6%	2.2%	25.2%	19.0%	9.8%	0.1%	100.0%
1981	44.2%	2.3%	25.6%	16.9%	10.2%	0.8%	100.0%
1982	44.9%	2.4%	26.2%	17.2%	9.2%	0.1%	100.0%
1983	43.9%	2.5%	26.5%	17.8%	9.2%	0.0%	100.0%
1984	43.7%	2.4%	26.2%	16.7%	11.0%	0.0%	100.0%
1985	43.5%	2.5%	26.8%	17.3%	9.8%	0.1%	100.0%
1986	42.7%	2.4%	26.4%	18.5%	10.0%	0.2%	100.0%
1987	41.8%	2.3%	26.5%	18.0%	11.3%	0.1%	100.0%
1988	41.8%	2.3%	26.8%	18.4%	10.7%	0.0%	100.0%
1989	42.7%	2.3%	26.1%	18.5%	10.4%	0.0%	100.0%
1990	42.1%	2.2%	26.1%	19.1%	10.1%	0.5%	100.0%
1991	41.9%	2.3%	28.2%	18.1%	9.5%	0.0%	100.0%
1992	43.9%	2.4%	28.6%	15.5%	9.6%	0.1%	100.0%
1993	45.0%	2.3%	29.3%	13.6%	9.7%	0.0%	100.0%
1994	45.4%	2.2%	29.2%	13.3%	9.9%	0.1%	100.0%
1995	45.2%	2.3%	28.3%	14.8%	9.4%	0.0%	100.0%
1996	45.5%	2.2%	27.4%	15.7%	9.1%	0.1%	100.0%
1997	46.1%	2.2%	27.5%	15.1%	9.0%	0.1%	100.0%
1998	45.5%	2.2%	27.9%	16.4%	8.0%	0.1%	100.0%
1999	44.6%	2.2%	27.3%	17.9%	7.9%	0.1%	100.0%
2000	44.9%	2.1%	28.1%	16.6%	8.2%	0.0%	100.0%
2001	46.3%	2.2%	29.6%	13.5%	8.3%	0.1%	100.0%
2002	47.3%	2.1%	29.4%	12.7%	8.4%	0.1%	100.0%
2003	48.7%	2.3%	30.4%	10.3%	8.2%	0.1%	100.0%
2004	48.0%	2.3%	30.9%	10.4%	8.3%	0.1%	100.0%
2005	48.1%	2.3%	30.6%	10.6%	8.4%	0.1%	100.0%
2006	47.9%	2.2%	30.9%	10.3%	8.6%	0.1%	100.0%
2007	48.7%	2.2%	30.9%	8.7%	9.3%	0.1%	100.0%
2008	47.7%	2.2%	30.9%	9.8%	9.3%	0.2%	100.0%
2009	47.8%	2.2%	31.2%	9.3%	9.3%	0.1%	100.0%
2010	48.2%	2.3%	31.9%	8.2%	9.4%	0.1%	100.0%
5 Yr. Avg.	48.0%	2.2%	30.9%	9.7%	9.0%	0.1%	100.0%
10 Yr. Avg.	47.6%	2.2%	30.3%	11.2%	8.6%	0.1%	100.0%

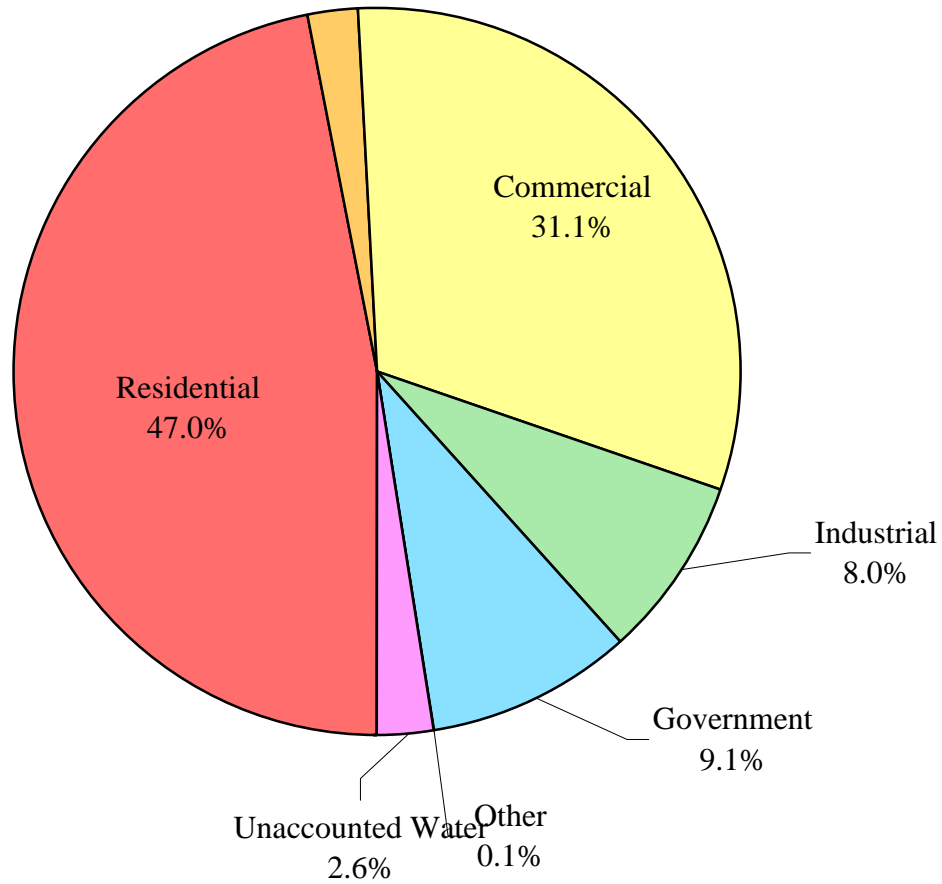
average is from years 2005 through 2009.

Ten year average is from years 2000 through 2009.

East Los Angeles District

Percent of Total Demand by Type of Use (2010)

Multi Family Residential
2.2%



California Water Service Company - East Los Angeles District
Water Supply and Demand Analysis and Projections
Percentage of Total Demand

Worksheet 9

Year	Residential	Multi Family Residential	Commercial	Industrial	Government	Other	Unaccounted Water	Percent Total
1980	40.0%	2.0%	23.1%	17.4%	9.0%	0.1%	8.4%	100.0%
1981	41.2%	2.1%	23.9%	15.7%	9.5%	0.8%	6.8%	100.0%
1982	41.6%	2.3%	24.3%	15.9%	8.5%	0.1%	7.4%	100.0%
1983	40.1%	2.2%	24.2%	16.3%	8.4%	0.0%	8.7%	100.0%
1984	40.4%	2.2%	24.3%	15.4%	10.2%	0.0%	7.5%	100.0%
1985	40.1%	2.3%	24.7%	16.0%	9.0%	0.1%	7.9%	100.0%
1986	39.6%	2.2%	24.4%	17.1%	9.2%	0.2%	7.3%	100.0%
1987	39.1%	2.1%	24.8%	16.8%	10.6%	0.1%	6.5%	100.0%
1988	38.8%	2.1%	24.8%	17.0%	9.9%	0.0%	7.2%	100.0%
1989	39.8%	2.1%	24.4%	17.2%	9.7%	0.0%	6.8%	100.0%
1990	39.4%	2.1%	24.4%	17.9%	9.4%	0.4%	6.3%	100.0%
1991	39.8%	2.2%	26.9%	17.2%	9.1%	0.0%	4.8%	100.0%
1992	41.4%	2.2%	26.9%	14.6%	9.0%	0.1%	5.8%	100.0%
1993	43.1%	2.2%	28.0%	13.0%	9.3%	0.0%	4.3%	100.0%
1994	43.0%	2.1%	27.7%	12.6%	9.3%	0.1%	5.3%	100.0%
1995	43.1%	2.2%	27.0%	14.2%	8.9%	0.0%	4.6%	100.0%
1996	43.2%	2.1%	26.0%	14.9%	8.7%	0.1%	5.1%	100.0%
1997	43.4%	2.1%	25.9%	14.2%	8.4%	0.1%	5.8%	100.0%
1998	42.1%	2.1%	25.8%	15.2%	7.4%	0.1%	7.3%	100.0%
1999	41.6%	2.0%	25.5%	16.8%	7.4%	0.0%	6.6%	100.0%
2000	42.7%	2.0%	26.7%	15.8%	7.8%	0.0%	4.8%	100.0%
2001	44.4%	2.1%	28.3%	12.9%	7.9%	0.1%	4.3%	100.0%
2002	43.9%	2.0%	27.2%	11.8%	7.8%	0.1%	7.2%	100.0%
2003	46.0%	2.1%	28.7%	9.7%	7.7%	0.1%	5.6%	100.0%
2004	45.5%	2.1%	29.2%	9.9%	7.8%	0.1%	5.4%	100.0%
2005	45.1%	2.2%	28.7%	9.9%	7.9%	0.1%	6.1%	100.0%
2006	44.8%	2.1%	28.9%	9.7%	8.0%	0.1%	6.5%	100.0%
2007	46.2%	2.1%	29.3%	8.3%	8.8%	0.1%	5.3%	100.0%
2008	46.2%	2.1%	29.9%	9.5%	9.0%	0.2%	3.3%	100.0%
2009	46.4%	2.1%	30.3%	9.1%	9.1%	0.1%	2.9%	100.0%
2010	47.0%	2.2%	31.1%	8.0%	9.1%	0.1%	2.6%	100.0%
5 Yr. Avg.	45.7%	2.1%	29.4%	9.3%	8.6%	0.1%	4.8%	100.0%
10 Yr. Avg.	45.1%	2.1%	28.7%	10.7%	8.2%	0.1%	5.1%	100.0%

Five year average is from years 2005 through 2009.

Ten year average is from years 2000 through 2009.

California Water Service Company - East Los Angeles District

Water Supply and Demand Analysis and Projections

Worksheet 10

Scenario #1: Based on Maintaining Growth at the 10-Year Average Annual Growth and Low Demand per Service for each Customer Class.
 15-Year Average High

Summary of Historical Growth Rate from Worksheet 2			
Customer Type	15 Yr. Avg. Historical Growth Rate	Individual Growth Rate Selected	Notes
Single Family Residential	0.025%	0.025%	Historical growth rate used
Multi Family Residential	-0.049%	0.033%	Overall growth rate used
Commercial	0.058%	0.058%	Historical growth rate used
Industrial	-1.055%	0.033%	Overall growth rate used
Government	0.385%	0.385%	Historical growth rate used
Other	5.242%	0.033%	Overall growth rate used
Overall	0.033%	0.037%	

Summary of Lowest Demand per Service from Worksheets 5 and 6									
Demand/Serv. Units	Multi-Residential			Commercial	Industrial	Government	Total Other	Unaccounted Total Serv.	Combined Demand/Serv.
	Residential	(service)	(unit)						
Gal/Service/Yr	132,309	909,764	71,116	343,865	3,479,339	1,428,706	280,931	6,340	222,123
AF/Service/Yr	0.406	2.792	0.218	1.055	10.678	4.385	0.862	0.019	0.682
Gal/Service/Day	362	2,493	195	942	9,532	3,914	770	17	609

California Water Service Company - East Los Angeles District

Water Supply and Demand Analysis and Projections

Worksheet 10

30-year projection Summary

Scenario #1: Based on Maintaining Growth at the 10-Year 15-Year Average Annual Growth and Low Average High Demand per Service for each Customer Class.

Customer Type	Projected Services 2010	Projected Services 2015	Projected Services 2020	Projected Services 2025	Projected Services 2030	Projected Services 2035	Projected Services 2040	Services projected to be added from 2010 - 2040
Single Family Residential	20,214	20,240	20,265	20,291	20,317	20,343	20,368	154
Multi Family Residential	135	135	135	136	136	136	136	1
Commercial	5,078	5,093	5,107	5,122	5,137	5,152	5,167	89
Industrial	114	114	114	115	115	115	115	1
Government	367	375	382	389	397	404	412	45
Other	20	20	20	20	20	20	20	0
Total	25,929	25,976	26,025	26,073	26,122	26,170	26,219	291

Customer Type	Projected Demand 2010 (ccf)	Projected Demand 2015 (ccf)	Projected Demand 2020 (ccf)	Projected Demand 2025 (ccf)	Projected Demand 2030 (ccf)	Projected Demand 2035 (ccf)	Projected Demand 2040 (ccf)	Projected demand to be added from 2010 - 2040 (ccf)
Single Family Residential	3,575,297	3,579,828	3,584,365	3,588,907	3,593,455	3,598,009	3,602,569	27,272
Multi Family Residential	164,238	164,512	164,786	165,061	165,336	165,612	165,888	1,650
Commercial	2,334,221	2,340,998	2,347,794	2,354,611	2,361,447	2,368,303	2,375,179	40,959
Industrial	530,411	531,296	532,182	533,070	533,959	534,849	535,741	5,330
Government	701,710	715,310	729,175	743,307	757,714	772,400	787,370	85,660
Other	7,513	7,526	7,539	7,551	7,564	7,576	7,589	75
Unaccounted	219,747	220,153	220,561	220,971	221,383	221,797	222,212	2,465
Total	7,533,138	7,559,623	7,586,402	7,613,479	7,640,859	7,668,547	7,696,550	163,412

Customer Type	Projected Demand 2010 (AF)	Projected Demand 2015 (AF)	Projected Demand 2020 (AF)	Projected Demand 2025 (AF)	Projected Demand 2030 (AF)	Projected Demand 2035 (AF)	Projected Demand 2040 (AF)	Projected demand to be added from 2010 - 2040 (AF)
Single Family Residential	8,208	8,218	8,229	8,239	8,249	8,260	8,270	63
Multi Family Residential	377	378	378	379	380	380	381	4
Commercial	5,359	5,374	5,390	5,405	5,421	5,437	5,453	94
Industrial	1,218	1,220	1,222	1,224	1,226	1,228	1,230	12
Government	1,611	1,642	1,674	1,706	1,739	1,773	1,808	197
Other	17	17	17	17	17	17	17	0
Unaccounted	504	505	506	507	508	509	510	6
Total	17,294	17,355	17,416	17,478	17,541	17,605	17,669	375

California Water Service Company - East Los Angeles District

Water Supply and Demand Analysis and Projections

Worksheet 10

2000's Projections

Scenario #1: Based on Maintaining Growth at the

- 10-Year
 15-Year

Average Annual Growth and

- Low
 Average
 High

Demand per Service for each Customer Class.

Customer Type	Actual Services 2001	Actual Services 2002	Actual Services 2003	Actual Services 2004	Actual Services 2005	Actual Services 2006	Actual Services 2007	Actual Services 2008	Actual Services 2009	Projected Services 2010
Resident	20,215	20,264	20,319	20,321	20,371	20,381	20,395	20,317	20,209	20,214
Multi- Residential	136	136	136	136	136	136	135	136	135	135
Commercial	4,977	4,972	4,986	4,985	4,993	4,980	4,979	5,026	5,075	5,078
Industrial	133	130	126	126	127	125	124	119	114	114
Government	319	320	321	328	331	333	333	348	366	367
Other	12	12	15	19	20	18	23	24	20	20
Total	25,792	25,834	25,903	25,915	25,977	25,973	25,989	25,970	25,919	25,929

Customer Type	Demand 2001(ccf)	Demand 2002(ccf)	Demand 2003(ccf)	Demand 2004(ccf)	Demand 2005(ccf)	Demand 2006(ccf)	Demand 2007(ccf)	Demand 2008(ccf)	Demand 2009(ccf)	Demand 2010(ccf)
Resident	3,575,453	3,584,119	3,593,847	3,594,201	3,602,978	3,604,813	3,607,289	3,593,493	3,574,391	3,575,297
Multi- Residential	165,400	165,400	165,400	165,400	165,400	165,400	164,183	165,400	164,183	164,238
Commercial	2,287,819	2,285,521	2,291,956	2,291,477	2,295,250	2,289,198	2,288,738	2,310,343	2,332,867	2,334,221
Industrial	618,607	604,654	586,049	586,049	590,700	581,398	576,746	553,491	530,235	530,411
Government	609,256	611,166	613,076	626,366	631,220	635,995	635,995	664,643	699,021	701,710
Other	4,507	4,507	5,633	7,135	7,511	6,760	8,638	9,013	7,511	7,513
Unaccounted	218,590	218,946	219,531	219,632	220,160	220,124	220,259	220,098	219,666	219,747
Total	7,479,631	7,474,311	7,475,491	7,490,259	7,513,219	7,503,687	7,501,849	7,516,481	7,527,875	7,533,138

Customer Type	Demand 2001(AF)	Demand 2002(AF)	Demand 2003(AF)	Demand 2004(AF)	Demand 2005(AF)	Demand 2006(AF)	Demand 2007(AF)	Demand 2008(AF)	Demand 2009(AF)	Demand 2010(AF)
Resident	8,208	8,228	8,250	8,251	8,271	8,276	8,281	8,250	8,206	8,208
Multi- Residential	380	380	380	380	380	380	377	380	377	377
Commercial	5,252	5,247	5,262	5,261	5,269	5,255	5,254	5,304	5,356	5,359
Industrial	1,420	1,388	1,345	1,345	1,356	1,335	1,324	1,271	1,217	1,218
Government	1,399	1,403	1,407	1,438	1,449	1,460	1,460	1,526	1,605	1,611
Other	10	10	13	16	17	16	20	21	17	17
Unaccounted	502	503	504	504	505	505	506	505	504	504
Total	17,171	17,159	17,161	17,195	17,248	17,226	17,222	17,256	17,282	17,294

California Water Service Company - East Los Angeles District

Worksheet 10

Water Supply and Demand Analysis and Projections

2010's Projections

Scenario #1: Based on Maintaining Growth at the 10-Year 15-Year Average Annual Growth and Low Average High Demand per Service for each Customer Class.

Customer Type	Projected Services 2011	Projected Services 2012	Projected Services 2013	Projected Services 2014	Projected Services 2015	Projected Services 2016	Projected Services 2017	Projected Services 2018	Projected Services 2019	Projected Services 2020
Resident	20,219	20,224	20,229	20,235	20,240	20,245	20,250	20,255	20,260	20,265
Multi- Residential	135	135	135	135	135	135	135	135	135	135
Commercial	5,081	5,084	5,087	5,090	5,093	5,096	5,099	5,102	5,105	5,107
Industrial	114	114	114	114	114	114	114	114	114	114
Government	369	370	372	373	375	376	377	379	380	382
Other	20	20	20	20	20	20	20	20	20	20
Total	25,938	25,948	25,957	25,967	25,976	25,986	25,996	26,005	26,015	26,025

Customer Type	Demand 2011(ccf)	Demand 2012(ccf)	Demand 2013(ccf)	Demand 2014(ccf)	Demand 2015(ccf)	Demand 2016(ccf)	Demand 2017(ccf)	Demand 2018(ccf)	Demand 2019(ccf)	Demand 2020(ccf)
Resident	3,576,203	3,577,109	3,578,015	3,578,921	3,579,828	3,580,735	3,581,642	3,582,549	3,583,457	3,584,365
Multi- Residential	164,293	164,348	164,402	164,457	164,512	164,567	164,622	164,677	164,731	164,786
Commercial	2,335,574	2,336,929	2,338,284	2,339,641	2,340,998	2,342,355	2,343,714	2,345,073	2,346,433	2,347,794
Industrial	530,588	530,765	530,942	531,119	531,296	531,473	531,650	531,827	532,005	532,182
Government	704,409	707,119	709,839	712,569	715,310	718,062	720,824	723,597	726,380	729,175
Other	7,516	7,518	7,521	7,523	7,526	7,529	7,531	7,534	7,536	7,539
Unaccounted	219,828	219,909	219,991	220,072	220,153	220,235	220,316	220,398	220,480	220,561
Total	7,538,412	7,543,697	7,548,994	7,554,303	7,559,623	7,564,956	7,570,299	7,575,655	7,581,023	7,586,402

Customer Type	Demand 2011(AF)	Demand 2012(AF)	Demand 2013(AF)	Demand 2014(AF)	Demand 2015(AF)	Demand 2016(AF)	Demand 2017(AF)	Demand 2018(AF)	Demand 2019(AF)	Demand 2020(AF)
Resident	8,210	8,212	8,214	8,216	8,218	8,220	8,222	8,224	8,227	8,229
Multi- Residential	377	377	377	378	378	378	378	378	378	378
Commercial	5,362	5,365	5,368	5,371	5,374	5,377	5,380	5,384	5,387	5,390
Industrial	1,218	1,218	1,219	1,219	1,220	1,220	1,221	1,221	1,221	1,222
Government	1,617	1,623	1,630	1,636	1,642	1,648	1,655	1,661	1,668	1,674
Other	17	17	17	17	17	17	17	17	17	17
Unaccounted	505	505	505	505	505	506	506	506	506	506
Total	17,306	17,318	17,330	17,342	17,355	17,367	17,379	17,391	17,404	17,416

California Water Service Company - East Los Angeles District
Water Supply and Demand Analysis and Projections

2020's Projections

Scenario #1: Based on Maintaining Growth at the

- 10-Year
- 15-Year

Average Annual Growth and

- Low
- Average
- High

Demand per Service for each Customer Class.

Customer Type	Projected Services 2021	Projected Services 2022	Projected Services 2023	Projected Services 2024	Projected Services 2025	Projected Services 2026	Projected Services 2027	Projected Services 2028	Projected Services 2029	Projected Services 2030
Resident	20,271	20,276	20,281	20,286	20,291	20,296	20,301	20,306	20,312	20,317
Multi- Residential	136	136	136	136	136	136	136	136	136	136
Commercial	5,110	5,113	5,116	5,119	5,122	5,125	5,128	5,131	5,134	5,137
Industrial	114	114	115	115	115	115	115	115	115	115
Government	383	385	386	388	389	391	392	394	395	397
Other	20	20	20	20	20	20	20	20	20	20
Total	26,034	26,044	26,054	26,063	26,073	26,083	26,092	26,102	26,112	26,122

Customer Type	Demand 2021(ccf)	Demand 2022(ccf)	Demand 2023(ccf)	Demand 2024(ccf)	Demand 2025(ccf)	Demand 2026(ccf)	Demand 2027(ccf)	Demand 2028(ccf)	Demand 2029(ccf)	Demand 2030(ccf)
Resident	3,585,273	3,586,181	3,587,089	3,587,998	3,588,907	3,589,816	3,590,726	3,591,635	3,592,545	3,593,455
Multi- Residential	164,841	164,896	164,951	165,006	165,061	165,116	165,171	165,226	165,281	165,336
Commercial	2,349,156	2,350,519	2,351,882	2,353,246	2,354,611	2,355,977	2,357,343	2,358,710	2,360,078	2,361,447
Industrial	532,359	532,537	532,714	532,892	533,070	533,247	533,425	533,603	533,781	533,959
Government	731,979	734,795	737,622	740,459	743,307	746,167	749,037	751,918	754,811	757,714
Other	7,541	7,544	7,546	7,549	7,551	7,554	7,556	7,559	7,561	7,564
Unaccounted	220,643	220,725	220,807	220,889	220,971	221,054	221,136	221,218	221,301	221,383
Total	7,591,793	7,597,197	7,602,612	7,608,039	7,613,479	7,618,930	7,624,394	7,629,870	7,635,358	7,640,859

Customer Type	Demand 2021(AF)	Demand 2022(AF)	Demand 2023(AF)	Demand 2024(AF)	Demand 2025(AF)	Demand 2026(AF)	Demand 2027(AF)	Demand 2028(AF)	Demand 2029(AF)	Demand 2030(AF)
Resident	8,231	8,233	8,235	8,237	8,239	8,241	8,243	8,245	8,247	8,249
Multi- Residential	378	379	379	379	379	379	379	379	379	380
Commercial	5,393	5,396	5,399	5,402	5,405	5,409	5,412	5,415	5,418	5,421
Industrial	1,222	1,223	1,223	1,223	1,224	1,224	1,225	1,225	1,225	1,226
Government	1,680	1,687	1,693	1,700	1,706	1,713	1,720	1,726	1,733	1,739
Other	17	17	17	17	17	17	17	17	17	17
Unaccounted	507	507	507	507	507	507	508	508	508	508
Total	17,428	17,441	17,453	17,466	17,478	17,491	17,503	17,516	17,528	17,541

California Water Service Company - East Los Angeles District

Water Supply and Demand Analysis and Projections

Worksheet 10

2030's Projections

Scenario #1: Based on Maintaining Growth at the

- 10-Year
 15-Year

Average Annual Growth and

 Low Average High

Demand per Service for each Customer Class.

Customer Type	Projected Services 2031	Projected Services 2032	Projected Services 2033	Projected Services 2034	Projected Services 2035	Projected Services 2036	Projected Services 2037	Projected Services 2038	Projected Services 2039	Projected Services 2040
Resident	20,322	20,327	20,332	20,337	20,343	20,348	20,353	20,358	20,363	20,368
Multi- Residential	136	136	136	136	136	136	136	136	136	136
Commercial	5,140	5,143	5,146	5,149	5,152	5,155	5,158	5,161	5,164	5,167
Industrial	115	115	115	115	115	115	115	115	115	115
Government	398	400	401	403	404	406	408	409	411	412
Other	20	20	20	20	20	20	20	20	20	20
Total	26,131	26,141	26,151	26,161	26,170	26,180	26,190	26,200	26,210	26,219

Customer Type	Demand 2031(ccf)	Demand 2032(ccf)	Demand 2033(ccf)	Demand 2034(ccf)	Demand 2035(ccf)	Demand 2036(ccf)	Demand 2037(ccf)	Demand 2038(ccf)	Demand 2039(ccf)	Demand 2040(ccf)
Resident	3,594,366	3,595,276	3,596,187	3,597,098	3,598,009	3,598,921	3,599,833	3,600,745	3,601,657	3,602,569
Multi- Residential	165,392	165,447	165,502	165,557	165,612	165,667	165,723	165,778	165,833	165,888
Commercial	2,362,817	2,364,187	2,365,559	2,366,931	2,368,303	2,369,677	2,371,051	2,372,427	2,373,803	2,375,179
Industrial	534,137	534,315	534,493	534,671	534,849	535,027	535,206	535,384	535,563	535,741
Government	760,629	763,555	766,492	769,440	772,400	775,371	778,354	781,348	784,353	787,370
Other	7,566	7,569	7,571	7,574	7,576	7,579	7,581	7,584	7,586	7,589
Unaccounted	221,466	221,548	221,631	221,714	221,797	221,880	221,963	222,046	222,129	222,212
Total	7,646,371	7,651,897	7,657,434	7,662,984	7,668,547	7,674,122	7,679,710	7,685,311	7,690,924	7,696,550

Customer Type	Demand 2031(AF)	Demand 2032(AF)	Demand 2033(AF)	Demand 2034(AF)	Demand 2035(AF)	Demand 2036(AF)	Demand 2037(AF)	Demand 2038(AF)	Demand 2039(AF)	Demand 2040(AF)
Resident	8,252	8,254	8,256	8,258	8,260	8,262	8,264	8,266	8,268	8,270
Multi- Residential	380	380	380	380	380	380	380	381	381	381
Commercial	5,424	5,427	5,431	5,434	5,437	5,440	5,443	5,446	5,450	5,453
Industrial	1,226	1,227	1,227	1,227	1,228	1,228	1,229	1,229	1,229	1,230
Government	1,746	1,753	1,760	1,766	1,773	1,780	1,787	1,794	1,801	1,808
Other	17	17	17	17	17	17	17	17	17	17
Unaccounted	508	509	509	509	509	509	510	510	510	510
Total	17,554	17,566	17,579	17,592	17,605	17,617	17,630	17,643	17,656	17,669

California Water Service Company - East Los Angeles District

Water Supply and Demand Analysis and Projections

Worksheet 11

Scenario #2: Based on Maintaining Growth at the 10-Year Average Annual Growth and Low Demand per Service for each Customer Class.
 15-Year Average High

Summary of Historical Growth Rate from Worksheet 2			
Customer Type	15 Yr. Avg. Historical Growth Rate	Individual Growth Rate Selected	Notes
Single Family Residential	0.025%	0.025%	Historical growth rate used
Multi Family Residential	-0.049%	0.033%	Overall growth rate used
Commercial	0.058%	0.058%	Historical growth rate used
Industrial	-1.055%	0.033%	Overall growth rate used
Government	0.385%	0.385%	Historical growth rate used
Other	5.242%	0.033%	Overall growth rate used
Overall	0.033%	0.037%	

Summary of Average Demand per Service from Worksheets 5 and 6									
Demand/Serv. Units	Multi-Residential						Total Other	Unaccounted Total Serv.	Combined Demand/Serv.
	Residential	(service)	(unit)	Commercial	Industrial	Government			
Gal/Service/Yr	148,598	1,062,498	85,100	360,100	7,692,783	1,857,256	740,095	13,863	269,305
AF/Service/Yr	0.456	3.261	0.261	1.105	23.608	5.700	2.271	0.043	0.826
Gal/Service/Day	407	2,911	233	987	21,076	5,088	2,028	38	738

California Water Service Company - East Los Angeles District

Water Supply and Demand Analysis and Projections

Worksheet 11

30-year projection Summary

Scenario #2: Based on Maintaining Growth at the

- 10-Year
 15-Year

Average Annual Growth and

 Low Average High

Demand per Service for each Customer Class.

Customer Type	Projected Services 2010	Projected Services 2015	Projected Services 2020	Projected Services 2025	Projected Services 2030	Projected Services 2035	Projected Services 2040	Services projected to be added from 2010 - 2040
Single Family Residential	20,214	20,240	20,265	20,291	20,317	20,343	20,368	154
Multi Family Residential	135	135	135	136	136	136	136	1
Commercial	5,078	5,093	5,107	5,122	5,137	5,152	5,167	89
Industrial	114	114	114	115	115	115	115	1
Government	367	375	382	389	397	404	412	45
Other	20	20	20	20	20	20	20	0
Total	25,929	25,976	26,025	26,073	26,122	26,170	26,219	291

Customer Type	Projected Demand 2010 (ccf)	Projected Demand 2015 (ccf)	Projected Demand 2020 (ccf)	Projected Demand 2025 (ccf)	Projected Demand 2030 (ccf)	Projected Demand 2035 (ccf)	Projected Demand 2040 (ccf)	Projected demand to be added from 2010 - 2040 (ccf)
Single Family Residential	4,015,441	4,020,529	4,025,625	4,030,726	4,035,834	4,040,949	4,046,070	30,630
Multi Family Residential	191,811	192,131	192,451	192,772	193,094	193,416	193,738	1,927
Commercial	2,444,427	2,451,524	2,458,642	2,465,780	2,472,939	2,480,119	2,487,320	42,893
Industrial	1,172,734	1,174,690	1,176,649	1,178,611	1,180,577	1,182,546	1,184,518	11,784
Government	912,193	929,873	947,895	966,267	984,995	1,004,086	1,023,548	111,355
Other	19,794	19,827	19,860	19,893	19,926	19,959	19,993	199
Unaccounted	480,509	481,398	482,290	483,186	484,086	484,991	485,899	5,390
Total	9,236,908	9,269,971	9,303,412	9,337,236	9,371,452	9,406,066	9,441,086	204,178

Customer Type	Projected Demand 2010 (AF)	Projected Demand 2015 (AF)	Projected Demand 2020 (AF)	Projected Demand 2025 (AF)	Projected Demand 2030 (AF)	Projected Demand 2035 (AF)	Projected Demand 2040 (AF)	Projected demand to be added from 2010 - 2040 (AF)
Single Family Residential	9,218	9,230	9,242	9,253	9,265	9,277	9,289	70
Multi Family Residential	440	441	442	443	443	444	445	4
Commercial	5,612	5,628	5,644	5,661	5,677	5,694	5,710	98
Industrial	2,692	2,697	2,701	2,706	2,710	2,715	2,719	27
Government	2,094	2,135	2,176	2,218	2,261	2,305	2,350	256
Other	45	46	46	46	46	46	46	0
Unaccounted	1,103	1,105	1,107	1,109	1,111	1,113	1,115	12
Total	21,205	21,281	21,358	21,435	21,514	21,594	21,674	469

California Water Service Company - East Los Angeles District
Water Supply and Demand Analysis and Projections

Scenario #2: Based on Maintaining Growth at the

- 10-Year
 15-Year

Average Annual Growth and

- Low
 Average
 High

2000's Projections

Demand per Service for each Customer Class.

Customer Type	Actual Services 2001	Actual Services 2002	Actual Services 2003	Actual Services 2004	Actual Services 2005	Actual Services 2006	Actual Services 2007	Actual Services 2008	Actual Services 2009	Projected Services 2010
Resident	20,215	20,264	20,319	20,321	20,371	20,381	20,395	20,317	20,209	20,214
Multi- Residential	136	136	136	136	136	136	135	136	135	135
Commercial	4,977	4,972	4,986	4,985	4,993	4,980	4,979	5,026	5,075	5,078
Industrial	133	130	126	126	127	125	124	119	114	114
Government	319	320	321	328	331	333	333	348	366	367
Other	12	12	15	19	20	18	23	24	20	20
Total	25,792	25,834	25,903	25,915	25,977	25,973	25,989	25,970	25,919	25,929

Customer Type	Demand 2001(ccf)	Demand 2002(ccf)	Demand 2003(ccf)	Demand 2004(ccf)	Demand 2005(ccf)	Demand 2006(ccf)	Demand 2007(ccf)	Demand 2008(ccf)	Demand 2009(ccf)	Demand 2010(ccf)
Resident	4,015,615	4,025,349	4,036,275	4,036,672	4,046,530	4,048,591	4,051,372	4,035,877	4,014,424	4,015,441
Multi- Residential	193,167	193,167	193,167	193,167	193,167	193,167	191,747	193,167	191,747	191,811
Commercial	2,395,835	2,393,428	2,400,167	2,399,666	2,403,617	2,397,279	2,396,798	2,419,423	2,443,010	2,444,427
Industrial	1,367,734	1,336,883	1,295,748	1,295,748	1,306,031	1,285,464	1,275,180	1,223,762	1,172,343	1,172,734
Government	792,007	794,489	796,972	814,248	820,559	826,766	826,766	864,007	908,697	912,193
Other	11,872	11,872	14,840	18,798	19,787	17,808	22,755	23,745	19,787	19,794
Unaccounted	477,979	478,757	480,036	480,256	481,412	481,333	481,629	481,277	480,332	480,509
Total	9,254,209	9,233,945	9,217,205	9,238,555	9,271,104	9,250,408	9,246,247	9,241,258	9,230,340	9,236,908

Customer Type	Demand 2001(AF)	Demand 2002(AF)	Demand 2003(AF)	Demand 2004(AF)	Demand 2005(AF)	Demand 2006(AF)	Demand 2007(AF)	Demand 2008(AF)	Demand 2009(AF)	Demand 2010(AF)
Resident	9,219	9,241	9,266	9,267	9,290	9,294	9,301	9,265	9,216	9,218
Multi- Residential	443	443	443	443	443	443	440	443	440	440
Commercial	5,500	5,495	5,510	5,509	5,518	5,503	5,502	5,554	5,608	5,612
Industrial	3,140	3,069	2,975	2,975	2,998	2,951	2,927	2,809	2,691	2,692
Government	1,818	1,824	1,830	1,869	1,884	1,898	1,898	1,984	2,086	2,094
Other	27	27	34	43	45	41	52	55	45	45
Unaccounted	1,097	1,099	1,102	1,103	1,105	1,105	1,106	1,105	1,103	1,103
Total	21,245	21,198	21,160	21,209	21,284	21,236	21,227	21,215	21,190	21,205

California Water Service Company - East Los Angeles District

Water Supply and Demand Analysis and Projections

Worksheet 11

Scenario #2: Based on Maintaining Growth at the 10-Year 15-Year Average Annual Growth and Low Average High Demand per Service for each Customer Class.

Customer Type	Projected Services 2011	Projected Services 2012	Projected Services 2013	Projected Services 2014	Projected Services 2015	Projected Services 2016	Projected Services 2017	Projected Services 2018	Projected Services 2019	Projected Services 2020
Resident	20,219	20,224	20,229	20,235	20,240	20,245	20,250	20,255	20,260	20,265
Multi- Residential	135	135	135	135	135	135	135	135	135	135
Commercial	5,081	5,084	5,087	5,090	5,093	5,096	5,099	5,102	5,105	5,107
Industrial	114	114	114	114	114	114	114	114	114	114
Government	369	370	372	373	375	376	377	379	380	382
Other	20	20	20	20	20	20	20	20	20	20
Total	25,938	25,948	25,957	25,967	25,976	25,986	25,996	26,005	26,015	26,025

Customer Type	Demand 2011(ccf)	Demand 2012(ccf)	Demand 2013(ccf)	Demand 2014(ccf)	Demand 2015(ccf)	Demand 2016(ccf)	Demand 2017(ccf)	Demand 2018(ccf)	Demand 2019(ccf)	Demand 2020(ccf)
Resident	4,016,458	4,017,475	4,018,493	4,019,511	4,020,529	4,021,548	4,022,567	4,023,586	4,024,605	4,025,625
Multi- Residential	191,875	191,939	192,003	192,067	192,131	192,195	192,259	192,323	192,387	192,451
Commercial	2,445,845	2,447,264	2,448,683	2,450,103	2,451,524	2,452,946	2,454,369	2,455,792	2,457,217	2,458,642
Industrial	1,173,125	1,173,516	1,173,907	1,174,298	1,174,690	1,175,081	1,175,473	1,175,865	1,176,257	1,176,649
Government	915,702	919,224	922,760	926,309	929,873	933,450	937,040	940,645	944,263	947,895
Other	19,800	19,807	19,814	19,820	19,827	19,833	19,840	19,847	19,853	19,860
Unaccounted	480,687	480,864	481,042	481,220	481,398	481,576	481,754	481,932	482,111	482,290
Total	9,243,491	9,250,089	9,256,701	9,263,329	9,269,971	9,276,629	9,283,302	9,289,990	9,296,693	9,303,412

Customer Type	Demand 2011(AF)	Demand 2012(AF)	Demand 2013(AF)	Demand 2014(AF)	Demand 2015(AF)	Demand 2016(AF)	Demand 2017(AF)	Demand 2018(AF)	Demand 2019(AF)	Demand 2020(AF)
Resident	9,221	9,223	9,225	9,228	9,230	9,232	9,235	9,237	9,239	9,242
Multi- Residential	440	441	441	441	441	441	441	442	442	442
Commercial	5,615	5,618	5,621	5,625	5,628	5,631	5,634	5,638	5,641	5,644
Industrial	2,693	2,694	2,695	2,696	2,697	2,698	2,699	2,699	2,700	2,701
Government	2,102	2,110	2,118	2,127	2,135	2,143	2,151	2,159	2,168	2,176
Other	45	45	45	46	46	46	46	46	46	46
Unaccounted	1,104	1,104	1,104	1,105	1,105	1,106	1,106	1,106	1,107	1,107
Total	21,220	21,235	21,251	21,266	21,281	21,296	21,312	21,327	21,342	21,358

California Water Service Company - East Los Angeles District
Water Supply and Demand Analysis and Projections

Scenario #2: Based on Maintaining Growth at the 10-Year 15-Year Average Annual Growth and Low Average High Demand per Service for each Customer Class.

Customer Type	Projected Services 2021	Projected Services 2022	Projected Services 2023	Projected Services 2024	Projected Services 2025	Projected Services 2026	Projected Services 2027	Projected Services 2028	Projected Services 2029	Projected Services 2030
Resident	20,271	20,276	20,281	20,286	20,291	20,296	20,301	20,306	20,312	20,317
Multi- Residential	136	136	136	136	136	136	136	136	136	136
Commercial	5,110	5,113	5,116	5,119	5,122	5,125	5,128	5,131	5,134	5,137
Industrial	114	114	115	115	115	115	115	115	115	115
Government	383	385	386	388	389	391	392	394	395	397
Other	20	20	20	20	20	20	20	20	20	20
Total	26,034	26,044	26,054	26,063	26,073	26,083	26,092	26,102	26,112	26,122

Customer Type	Demand 2021(ccf)	Demand 2022(ccf)	Demand 2023(ccf)	Demand 2024(ccf)	Demand 2025(ccf)	Demand 2026(ccf)	Demand 2027(ccf)	Demand 2028(ccf)	Demand 2029(ccf)	Demand 2030(ccf)
Resident	4,026,644	4,027,664	4,028,685	4,029,705	4,030,726	4,031,747	4,032,769	4,033,790	4,034,812	4,035,834
Multi- Residential	192,515	192,579	192,644	192,708	192,772	192,836	192,901	192,965	193,029	193,094
Commercial	2,460,068	2,461,495	2,462,923	2,464,351	2,465,780	2,467,210	2,468,641	2,470,073	2,471,506	2,472,939
Industrial	1,177,041	1,177,433	1,177,826	1,178,219	1,178,611	1,179,004	1,179,397	1,179,790	1,180,184	1,180,577
Government	951,542	955,202	958,876	962,565	966,267	969,984	973,715	977,461	981,221	984,995
Other	19,866	19,873	19,880	19,886	19,893	19,900	19,906	19,913	19,920	19,926
Unaccounted	482,469	482,648	482,827	483,006	483,186	483,366	483,546	483,726	483,906	484,086
Total	9,310,146	9,316,895	9,323,660	9,330,440	9,337,236	9,344,048	9,350,875	9,357,719	9,364,577	9,371,452

Customer Type	Demand 2021(AF)	Demand 2022(AF)	Demand 2023(AF)	Demand 2024(AF)	Demand 2025(AF)	Demand 2026(AF)	Demand 2027(AF)	Demand 2028(AF)	Demand 2029(AF)	Demand 2030(AF)
Resident	9,244	9,246	9,249	9,251	9,253	9,256	9,258	9,260	9,263	9,265
Multi- Residential	442	442	442	442	443	443	443	443	443	443
Commercial	5,648	5,651	5,654	5,657	5,661	5,664	5,667	5,671	5,674	5,677
Industrial	2,702	2,703	2,704	2,705	2,706	2,707	2,708	2,708	2,709	2,710
Government	2,184	2,193	2,201	2,210	2,218	2,227	2,235	2,244	2,253	2,261
Other	46	46	46	46	46	46	46	46	46	46
Unaccounted	1,108	1,108	1,108	1,109	1,109	1,110	1,110	1,110	1,111	1,111
Total	21,373	21,389	21,404	21,420	21,435	21,451	21,467	21,483	21,498	21,514

California Water Service Company - East Los Angeles District

Water Supply and Demand Analysis and Projections

2030's Projections

Scenario #2: Based on Maintaining Growth at the 10-Year Average Annual Growth and 15-Year Low Demand per Service for each Customer Class. Average High

Customer Type	Projected Services 2031	Projected Services 2032	Projected Services 2033	Projected Services 2034	Projected Services 2035	Projected Services 2036	Projected Services 2037	Projected Services 2038	Projected Services 2039	Projected Services 2040
Resident	20,322	20,327	20,332	20,337	20,343	20,348	20,353	20,358	20,363	20,368
Multi- Residential	136	136	136	136	136	136	136	136	136	136
Commercial	5,140	5,143	5,146	5,149	5,152	5,155	5,158	5,161	5,164	5,167
Industrial	115	115	115	115	115	115	115	115	115	115
Government	398	400	401	403	404	406	408	409	411	412
Other	20	20	20	20	20	20	20	20	20	20
Total	26,131	26,141	26,151	26,161	26,170	26,180	26,190	26,200	26,210	26,219

Customer Type	Demand 2031(ccf)	Demand 2032(ccf)	Demand 2033(ccf)	Demand 2034(ccf)	Demand 2035(ccf)	Demand 2036(ccf)	Demand 2037(ccf)	Demand 2038(ccf)	Demand 2039(ccf)	Demand 2040(ccf)
Resident	4,036,857	4,037,880	4,038,902	4,039,926	4,040,949	4,041,973	4,042,997	4,044,021	4,045,045	4,046,070
Multi- Residential	193,158	193,222	193,287	193,351	193,416	193,480	193,545	193,609	193,674	193,738
Commercial	2,474,374	2,475,809	2,477,245	2,478,682	2,480,119	2,481,558	2,482,997	2,484,437	2,485,878	2,487,320
Industrial	1,180,970	1,181,364	1,181,758	1,182,152	1,182,546	1,182,940	1,183,334	1,183,729	1,184,123	1,184,518
Government	988,784	992,588	996,406	1,000,239	1,004,086	1,007,949	1,011,826	1,015,718	1,019,625	1,023,548
Other	19,933	19,939	19,946	19,953	19,959	19,966	19,973	19,979	19,986	19,993
Unaccounted	484,267	484,448	484,629	484,810	484,991	485,172	485,354	485,535	485,717	485,899
Total	9,378,343	9,385,250	9,392,173	9,399,111	9,406,066	9,413,038	9,420,025	9,427,029	9,434,049	9,441,086

Customer Type	Demand 2031(AF)	Demand 2032(AF)	Demand 2033(AF)	Demand 2034(AF)	Demand 2035(AF)	Demand 2036(AF)	Demand 2037(AF)	Demand 2038(AF)	Demand 2039(AF)	Demand 2040(AF)
Resident	9,267	9,270	9,272	9,274	9,277	9,279	9,282	9,284	9,286	9,289
Multi- Residential	443	444	444	444	444	444	444	444	445	445
Commercial	5,680	5,684	5,687	5,690	5,694	5,697	5,700	5,704	5,707	5,710
Industrial	2,711	2,712	2,713	2,714	2,715	2,716	2,717	2,717	2,718	2,719
Government	2,270	2,279	2,287	2,296	2,305	2,314	2,323	2,332	2,341	2,350
Other	46	46	46	46	46	46	46	46	46	46
Unaccounted	1,112	1,112	1,113	1,113	1,113	1,114	1,114	1,115	1,115	1,115
Total	21,530	21,546	21,562	21,578	21,594	21,610	21,626	21,642	21,658	21,674

California Water Service Company - East Los Angeles District

Water Supply and Demand Analysis and Projections

Worksheet 12

Scenario #3: Based on Maintaining Growth at the 10-Year Average Annual Growth and Low Demand per Service for each Customer Class.
 15-Year Average High

Summary of Historical Growth Rate from Worksheet 2			
Customer Type	15 Yr. Avg. Historical Growth Rate	Individual Growth Rate Selected	Notes
Single Family Residential	0.025%	0.025%	Historical growth rate used
Multi Family Residential	-0.049%	0.033%	Overall growth rate used
Commercial	0.058%	0.058%	Historical growth rate used
Industrial	-1.055%	0.033%	Overall growth rate used
Government	0.385%	0.385%	Historical growth rate used
Other	5.242%	0.033%	Overall growth rate used
Overall	0.033%	0.037%	

Summary of Average Demand per Service from Worksheets 5 and 6									
Demand/Serv. Units	Residential	Multi-Residential		Commercial	Industrial	Government	Total Other	Unaccounted Total Serv.	Combined Demand/Serv.
		(service)	(unit)						
Gal/Service/Yr	157,326	1,264,191	103,927	390,508	8,935,621	2,231,973	6,463,637	20,871	307,808
AF/Service/Yr	0.483	3.880	0.319	1.198	27.422	6.850	19.836	0.064	0.945
Gal/Service/Day	431	3,464	285	1,070	24,481	6,115	17,709	57	843

California Water Service Company - East Los Angeles District
Water Supply and Demand Analysis and Projections

30-year projection Summary

Scenario #3: Based on Maintaining Growth at the

- 10-Year
 15-Year

Average Annual Growth and

- Low
 Average
 High

Demand per Service for each Customer Class.

Customer Type	Projected Services 2010	Projected Services 2015	Projected Services 2020	Projected Services 2025	Projected Services 2030	Projected Services 2035	Projected Services 2040	Services projected to be added from 2010 - 2040
Single Family Residential	20,214	20,240	20,265	20,291	20,317	20,343	20,368	154
Multi Family Residential	135	135	135	136	136	136	136	1
Commercial	5,078	5,093	5,107	5,122	5,137	5,152	5,167	89
Industrial	114	114	114	115	115	115	115	1
Government	367	375	382	389	397	404	412	45
Other	20	20	20	20	20	20	20	0
Total	25,929	25,976	26,025	26,073	26,122	26,170	26,219	291

Customer Type	Projected Demand 2010 (ccf)	Projected Demand 2015 (ccf)	Projected Demand 2020 (ccf)	Projected Demand 2025 (ccf)	Projected Demand 2030 (ccf)	Projected Demand 2035 (ccf)	Projected Demand 2040 (ccf)	Projected demand to be added from 2010 - 2040 (ccf)
Single Family Residential	4,251,290	4,256,678	4,262,073	4,267,474	4,272,882	4,278,297	4,283,719	32,429
Multi Family Residential	228,222	228,603	228,984	229,366	229,748	230,132	230,515	2,293
Commercial	2,650,847	2,658,543	2,666,262	2,674,003	2,681,767	2,689,553	2,697,362	46,515
Industrial	1,362,200	1,364,471	1,366,747	1,369,027	1,371,310	1,373,597	1,375,888	13,688
Government	1,096,236	1,117,483	1,139,142	1,161,220	1,183,727	1,206,670	1,230,057	133,822
Other	172,869	173,158	173,446	173,736	174,026	174,316	174,606	1,737
Unaccounted	723,406	724,743	726,086	727,435	728,791	730,152	731,520	8,115
Total	10,485,070	10,523,679	10,562,740	10,602,261	10,642,250	10,682,717	10,723,668	238,598

Customer Type	Projected Demand 2010 (AF)	Projected Demand 2015 (AF)	Projected Demand 2020 (AF)	Projected Demand 2025 (AF)	Projected Demand 2030 (AF)	Projected Demand 2035 (AF)	Projected Demand 2040 (AF)	Projected demand to be added from 2010 - 2040 (AF)
Single Family Residential	9,760	9,772	9,784	9,797	9,809	9,822	9,834	74
Multi Family Residential	524	525	526	527	527	528	529	5
Commercial	6,086	6,103	6,121	6,139	6,157	6,174	6,192	107
Industrial	3,127	3,132	3,138	3,143	3,148	3,153	3,159	31
Government	2,517	2,565	2,615	2,666	2,717	2,770	2,824	307
Other	397	398	398	399	400	400	401	4
Unaccounted	1,661	1,664	1,667	1,670	1,673	1,676	1,679	19
Total	24,071	24,159	24,249	24,340	24,431	24,524	24,618	548

California Water Service Company - East Los Angeles District
Water Supply and Demand Analysis and Projections

Scenario #3: Based on Maintaining Growth at the

- 10-Year
- 15-Year

Average Annual Growth and

- Low
- Average
- High

2000's Projections

Demand per Service for each Customer Class.

Customer Type	Actual Services 2001	Actual Services 2002	Actual Services 2003	Actual Services 2004	Actual Services 2005	Actual Services 2006	Actual Services 2007	Actual Services 2008	Actual Services 2009	Projected Services 2010
Resident	20,215	20,264	20,319	20,321	20,371	20,381	20,395	20,317	20,209	20,214
Multi- Residential	136	136	136	136	136	136	135	136	135	135
Commercial	4,977	4,972	4,986	4,985	4,993	4,980	4,979	5,026	5,075	5,078
Industrial	133	130	126	126	127	125	124	119	114	114
Government	319	320	321	328	331	333	333	348	366	367
Other	12	12	15	19	20	18	23	24	20	20
Total	25,792	25,834	25,903	25,915	25,977	25,973	25,989	25,970	25,919	25,929

Customer Type	Demand 2001(ccf)	Demand 2002(ccf)	Demand 2003(ccf)	Demand 2004(ccf)	Demand 2005(ccf)	Demand 2006(ccf)	Demand 2007(ccf)	Demand 2008(ccf)	Demand 2009(ccf)	Demand 2010(ccf)
Resident	4,251,475	4,261,781	4,273,348	4,273,769	4,284,205	4,286,387	4,289,332	4,272,927	4,250,214	4,251,290
Multi- Residential	229,836	229,836	229,836	229,836	229,836	229,836	228,146	229,836	228,146	228,222
Commercial	2,598,151	2,595,541	2,602,850	2,602,306	2,606,591	2,599,717	2,599,195	2,623,731	2,649,310	2,650,847
Industrial	1,588,703	1,552,868	1,505,087	1,505,087	1,517,032	1,493,142	1,481,197	1,421,471	1,361,746	1,362,200
Government	951,801	954,785	957,768	978,530	986,114	993,573	993,573	1,038,328	1,092,035	1,096,236
Other	103,687	103,687	129,609	164,171	172,812	155,531	198,734	207,374	172,812	172,869
Unaccounted	719,596	720,767	722,692	723,025	724,765	724,645	725,092	724,562	723,139	723,406
Total	10,443,250	10,419,265	10,421,191	10,476,724	10,521,355	10,482,832	10,515,269	10,518,230	10,477,401	10,485,070

Customer Type	Demand 2001(AF)	Demand 2002(AF)	Demand 2003(AF)	Demand 2004(AF)	Demand 2005(AF)	Demand 2006(AF)	Demand 2007(AF)	Demand 2008(AF)	Demand 2009(AF)	Demand 2010(AF)
Resident	9,760	9,784	9,810	9,811	9,835	9,840	9,847	9,809	9,757	9,760
Multi- Residential	528	528	528	528	528	528	524	528	524	524
Commercial	5,965	5,959	5,975	5,974	5,984	5,968	5,967	6,023	6,082	6,086
Industrial	3,647	3,565	3,455	3,455	3,483	3,428	3,400	3,263	3,126	3,127
Government	2,185	2,192	2,199	2,246	2,264	2,281	2,281	2,384	2,507	2,517
Other	238	238	298	377	397	357	456	476	397	397
Unaccounted	1,652	1,655	1,659	1,660	1,664	1,664	1,665	1,663	1,660	1,661
Total	23,975	23,920	23,924	24,051	24,154	24,065	24,140	24,147	24,053	24,071

California Water Service Company - East Los Angeles District
Water Supply and Demand Analysis and Projections

2010's Projections

Scenario #3: Based on Maintaining Growth at the 10-Year Average Annual Growth and Low Demand per Service for each Customer Class.
 15-Year Average High

Customer Type	Projected Services 2011	Projected Services 2012	Projected Services 2013	Projected Services 2014	Projected Services 2015	Projected Services 2016	Projected Services 2017	Projected Services 2018	Projected Services 2019	Projected Services 2020
Resident	20,219	20,224	20,229	20,235	20,240	20,245	20,250	20,255	20,260	20,265
Multi- Residential	135	135	135	135	135	135	135	135	135	135
Commercial	5,081	5,084	5,087	5,090	5,093	5,096	5,099	5,102	5,105	5,107
Industrial	114	114	114	114	114	114	114	114	114	114
Government	369	370	372	373	375	376	377	379	380	382
Other	20	20	20	20	20	20	20	20	20	20
Total	25,938	25,948	25,957	25,967	25,976	25,986	25,996	26,005	26,015	26,025

Customer Type	Demand 2011(ccf)	Demand 2012(ccf)	Demand 2013(ccf)	Demand 2014(ccf)	Demand 2015(ccf)	Demand 2016(ccf)	Demand 2017(ccf)	Demand 2018(ccf)	Demand 2019(ccf)	Demand 2020(ccf)
Resident	4,252,367	4,253,445	4,254,522	4,255,600	4,256,678	4,257,756	4,258,835	4,259,914	4,260,993	4,262,073
Multi- Residential	228,298	228,374	228,450	228,527	228,603	228,679	228,755	228,831	228,908	228,984
Commercial	2,652,385	2,653,923	2,655,462	2,657,002	2,658,543	2,660,085	2,661,628	2,663,172	2,664,717	2,666,262
Industrial	1,362,654	1,363,108	1,363,562	1,364,017	1,364,471	1,364,926	1,365,381	1,365,836	1,366,292	1,366,747
Government	1,100,453	1,104,686	1,108,935	1,113,201	1,117,483	1,121,781	1,126,096	1,130,428	1,134,777	1,139,142
Other	172,927	172,985	173,042	173,100	173,158	173,215	173,273	173,331	173,389	173,446
Unaccounted	723,673	723,940	724,207	724,475	724,743	725,011	725,279	725,548	725,817	726,086
Total	10,492,756	10,500,460	10,508,181	10,515,921	10,523,679	10,531,455	10,539,249	10,547,061	10,554,891	10,562,740

Customer Type	Demand 2011(AF)	Demand 2012(AF)	Demand 2013(AF)	Demand 2014(AF)	Demand 2015(AF)	Demand 2016(AF)	Demand 2017(AF)	Demand 2018(AF)	Demand 2019(AF)	Demand 2020(AF)
Resident	9,762	9,765	9,767	9,770	9,772	9,775	9,777	9,779	9,782	9,784
Multi- Residential	524	524	524	525	525	525	525	525	526	526
Commercial	6,089	6,093	6,096	6,100	6,103	6,107	6,110	6,114	6,117	6,121
Industrial	3,128	3,129	3,130	3,131	3,132	3,133	3,135	3,136	3,137	3,138
Government	2,526	2,536	2,546	2,556	2,565	2,575	2,585	2,595	2,605	2,615
Other	397	397	397	397	398	398	398	398	398	398
Unaccounted	1,661	1,662	1,663	1,663	1,664	1,664	1,665	1,666	1,666	1,667
Total	24,088	24,106	24,124	24,141	24,159	24,177	24,195	24,213	24,231	24,249

California Water Service Company - East Los Angeles District
Water Supply and Demand Analysis and Projections

2020's Projections

Scenario #3: Based on Maintaining Growth at the 10-Year Average Annual Growth and Low Demand per Service for each Customer Class.
 15-Year Average High

Customer Type	Projected Services 2021	Projected Services 2022	Projected Services 2023	Projected Services 2024	Projected Services 2025	Projected Services 2026	Projected Services 2027	Projected Services 2028	Projected Services 2029	Projected Services 2030
Resident	20,271	20,276	20,281	20,286	20,291	20,296	20,301	20,306	20,312	20,317
Multi- Residential	136	136	136	136	136	136	136	136	136	136
Commercial	5,110	5,113	5,116	5,119	5,122	5,125	5,128	5,131	5,134	5,137
Industrial	114	114	115	115	115	115	115	115	115	115
Government	383	385	386	388	389	391	392	394	395	397
Other	20	20	20	20	20	20	20	20	20	20
Total	26,034	26,044	26,054	26,063	26,073	26,083	26,092	26,102	26,112	26,122

Customer Type	Demand 2021(ccf)	Demand 2022(ccf)	Demand 2023(ccf)	Demand 2024(ccf)	Demand 2025(ccf)	Demand 2026(ccf)	Demand 2027(ccf)	Demand 2028(ccf)	Demand 2029(ccf)	Demand 2030(ccf)
Resident	4,263,152	4,264,232	4,265,313	4,266,393	4,267,474	4,268,555	4,269,636	4,270,718	4,271,800	4,272,882
Multi- Residential	229,060	229,137	229,213	229,289	229,366	229,442	229,519	229,595	229,672	229,748
Commercial	2,667,809	2,669,356	2,670,904	2,672,453	2,674,003	2,675,554	2,677,106	2,678,659	2,680,212	2,681,767
Industrial	1,367,203	1,367,658	1,368,114	1,368,570	1,369,027	1,369,483	1,369,939	1,370,396	1,370,853	1,371,310
Government	1,143,524	1,147,922	1,152,338	1,156,771	1,161,220	1,165,687	1,170,171	1,174,672	1,179,191	1,183,727
Other	173,504	173,562	173,620	173,678	173,736	173,794	173,852	173,910	173,968	174,026
Unaccounted	726,355	726,625	726,895	727,165	727,435	727,706	727,977	728,248	728,519	728,791
Total	10,570,607	10,578,493	10,586,397	10,594,320	10,602,261	10,610,221	10,618,200	10,626,198	10,634,215	10,642,250

Customer Type	Demand 2021(AF)	Demand 2022(AF)	Demand 2023(AF)	Demand 2024(AF)	Demand 2025(AF)	Demand 2026(AF)	Demand 2027(AF)	Demand 2028(AF)	Demand 2029(AF)	Demand 2030(AF)
Resident	9,787	9,789	9,792	9,794	9,797	9,799	9,802	9,804	9,807	9,809
Multi- Residential	526	526	526	526	527	527	527	527	527	527
Commercial	6,124	6,128	6,132	6,135	6,139	6,142	6,146	6,149	6,153	6,157
Industrial	3,139	3,140	3,141	3,142	3,143	3,144	3,145	3,146	3,147	3,148
Government	2,625	2,635	2,645	2,656	2,666	2,676	2,686	2,697	2,707	2,717
Other	398	398	399	399	399	399	399	399	399	400
Unaccounted	1,667	1,668	1,669	1,669	1,670	1,671	1,671	1,672	1,672	1,673
Total	24,267	24,285	24,303	24,321	24,340	24,358	24,376	24,395	24,413	24,431

California Water Service Company - East Los Angeles District
Water Supply and Demand Analysis and Projections

2030's Projections

Scenario #3: Based on Maintaining Growth at the 10-Year Average Annual Growth and Low Demand per Service for each Customer Class.
 15-Year Average Annual Growth and High Demand per Service for each Customer Class.

Customer Type	Projected Services 2031	Projected Services 2032	Projected Services 2033	Projected Services 2034	Projected Services 2035	Projected Services 2036	Projected Services 2037	Projected Services 2038	Projected Services 2039	Projected Services 2040
Resident	20,322	20,327	20,332	20,337	20,343	20,348	20,353	20,358	20,363	20,368
Multi- Residential	136	136	136	136	136	136	136	136	136	136
Commercial	5,140	5,143	5,146	5,149	5,152	5,155	5,158	5,161	5,164	5,167
Industrial	115	115	115	115	115	115	115	115	115	115
Government	398	400	401	403	404	406	408	409	411	412
Other	20	20	20	20	20	20	20	20	20	20
Total	26,131	26,141	26,151	26,161	26,170	26,180	26,190	26,200	26,210	26,219

Customer Type	Demand 2031(ccf)	Demand 2032(ccf)	Demand 2033(ccf)	Demand 2034(ccf)	Demand 2035(ccf)	Demand 2036(ccf)	Demand 2037(ccf)	Demand 2038(ccf)	Demand 2039(ccf)	Demand 2040(ccf)
Resident	4,273,965	4,275,047	4,276,130	4,277,214	4,278,297	4,279,381	4,280,465	4,281,550	4,282,634	4,283,719
Multi- Residential	229,825	229,902	229,978	230,055	230,132	230,208	230,285	230,362	230,439	230,515
Commercial	2,683,322	2,684,879	2,686,436	2,687,994	2,689,553	2,691,113	2,692,674	2,694,236	2,695,798	2,697,362
Industrial	1,371,767	1,372,224	1,372,682	1,373,139	1,373,597	1,374,055	1,374,513	1,374,971	1,375,429	1,375,888
Government	1,188,280	1,192,851	1,197,440	1,202,046	1,206,670	1,211,311	1,215,971	1,220,648	1,225,344	1,230,057
Other	174,084	174,142	174,200	174,258	174,316	174,374	174,432	174,490	174,548	174,606
Unaccounted	729,063	729,335	729,607	729,880	730,152	730,425	730,699	730,972	731,246	731,520
Total	10,650,305	10,658,379	10,666,472	10,674,585	10,682,717	10,690,868	10,699,038	10,707,229	10,715,438	10,723,668

Customer Type	Demand 2031(AF)	Demand 2032(AF)	Demand 2033(AF)	Demand 2034(AF)	Demand 2035(AF)	Demand 2036(AF)	Demand 2037(AF)	Demand 2038(AF)	Demand 2039(AF)	Demand 2040(AF)
Resident	9,812	9,814	9,817	9,819	9,822	9,824	9,827	9,829	9,832	9,834
Multi- Residential	528	528	528	528	528	528	529	529	529	529
Commercial	6,160	6,164	6,167	6,171	6,174	6,178	6,182	6,185	6,189	6,192
Industrial	3,149	3,150	3,151	3,152	3,153	3,154	3,155	3,157	3,158	3,159
Government	2,728	2,738	2,749	2,760	2,770	2,781	2,792	2,802	2,813	2,824
Other	400	400	400	400	400	400	400	401	401	401
Unaccounted	1,674	1,674	1,675	1,676	1,676	1,677	1,677	1,678	1,679	1,679
Total	24,450	24,468	24,487	24,506	24,524	24,543	24,562	24,581	24,599	24,618

California Water Service Company - East Los Angeles District Water Supply and Demand Analysis and Projections

Scenario #4: Based on Maintaining Growth at the 10-Year Average Annual Growth
 5-Year

Summary of Historical Growth Rate from Worksheet 2			
Customer Type	10 Yr. Avg. Historical Growth Rate	Individual Growth Rate Selected	Notes
Single Family Residential	0.042%	0.042%	Historical growth rate used
Multi Family Residential	-0.074%	0.080%	Overall growth rate used
Commercial	0.201%	0.080%	Overall growth rate used
Industrial	-1.590%	0.080%	Overall growth rate used
Government	1.093%	1.093%	Historical growth rate used
Other	3.560%	0.080%	Overall growth rate used
Overall	0.080%	0.067%	

California Water Service Company - East Los Angeles District

Water Supply and Demand Analysis and Projections

30-year projection Summary

Scenario #4: Based on Maintaining Growth at the 10-Year 5-Year Average Annual Growth

Customer Type	Projected Services 2010	Projected Services 2015	Projected Services 2020	Projected Services 2025	Projected Services 2030	Projected Services 2035	Projected Services 2040	Services projected to be added from 2010 - 2040
Single Family Residential	20,217	20,260	20,303	20,345	20,388	20,431	20,474	256
Multi Family Residential	135	136	136	137	137	138	138	3
Commercial	5,079	5,099	5,120	5,140	5,161	5,182	5,202	123
Industrial	114	115	115	115	116	116	117	3
Government	370	391	412	436	460	486	513	143
Other	20	20	20	20	20	20	21	0
Total	25,936	26,020	26,106	26,194	26,282	26,373	26,465	529

California Water Service Company - East Los Angeles District

Water Supply and Demand Analysis and Projections

Worksheet 13

2000's Projections

Scenario #4: Based on Maintaining Growth at the 10-Year 5-Year Average Annual Growth

Customer Type	Actual Services 2001	Actual Services 2002	Actual Services 2003	Actual Services 2004	Actual Services 2005	Actual Services 2006	Actual Services 2007	Actual Services 2008	Actual Services 2009	Projected Services 2010
Resident	20,215	20,264	20,319	20,321	20,371	20,381	20,395	20,317	20,209	20,217
Multi-Residential	136	136	136	136	136	136	135	136	135	135
Commercial	4,977	4,972	4,986	4,985	4,993	4,980	4,979	5,026	5,075	5,079
Industrial	133	130	126	126	127	125	124	119	114	114
Government	319	320	321	328	331	333	333	348	366	370
Other	12	12	15	19	20	18	23	24	20	20
Total	25,792	25,834	25,903	25,915	25,977	25,973	25,989	25,970	25,919	25,936

2010's Projections

Customer Type	Projected Services 2011	Projected Services 2012	Projected Services 2013	Projected Services 2014	Projected Services 2015	Projected Services 2016	Projected Services 2017	Projected Services 2018	Projected Services 2019	Projected Services 2020
Resident	20,226	20,234	20,243	20,251	20,260	20,268	20,277	20,286	20,294	20,303
Multi- Residential	135	135	135	136	136	136	136	136	136	136
Commercial	5,083	5,087	5,091	5,095	5,099	5,103	5,108	5,112	5,116	5,120
Industrial	114	114	114	114	115	115	115	115	115	115
Government	374	378	382	386	391	395	399	404	408	412
Other	20	20	20	20	20	20	20	20	20	20
Total	25,953	25,969	25,986	26,003	26,020	26,037	26,055	26,072	26,089	26,106

California Water Service Company - East Los Angeles District Water Supply and Demand Analysis and Projections

Worksheet 13

2020's Projections

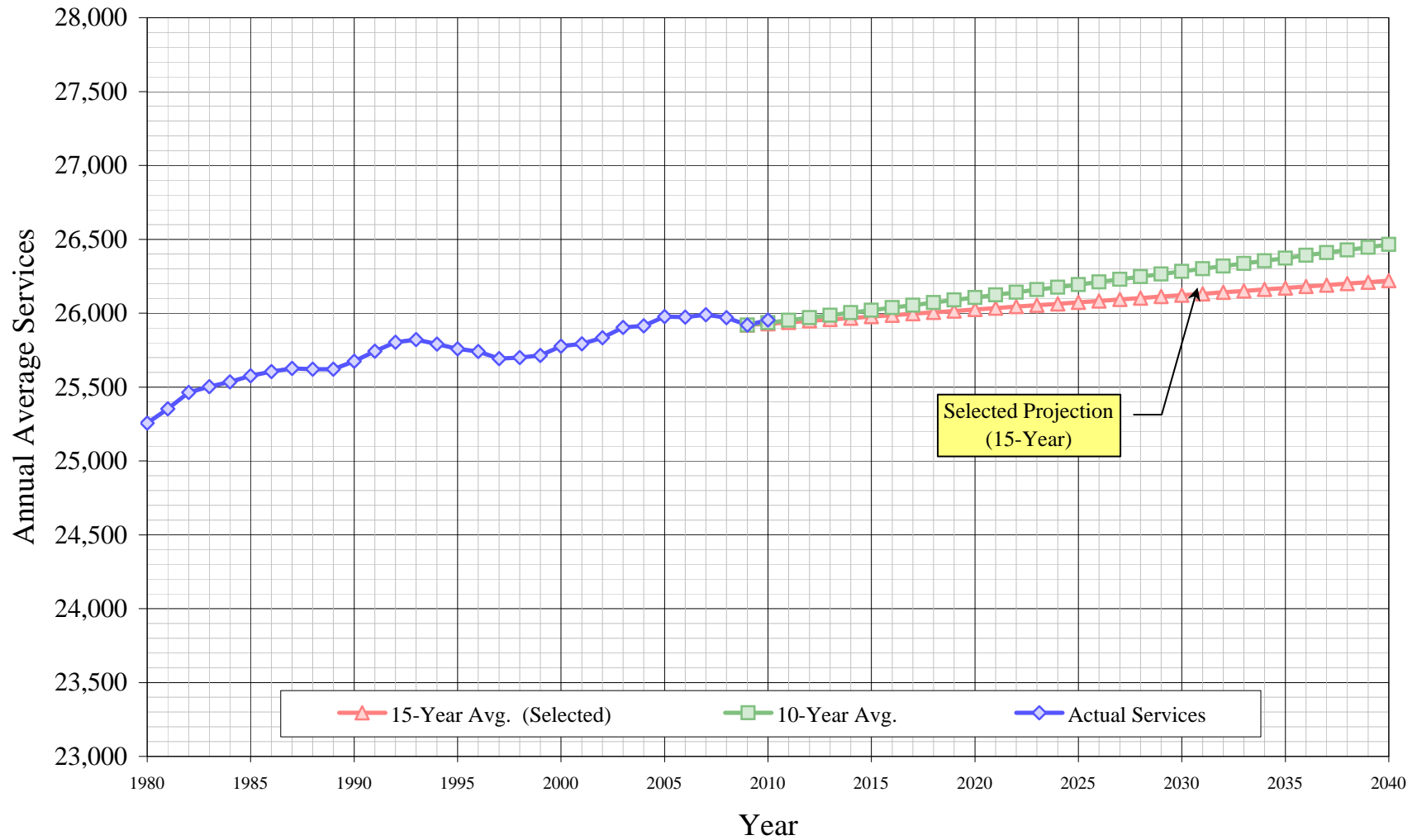
Scenario #4: Based on Maintaining Growth at the 10-Year 5-Year Average Annual Growth

Customer Type	Projected Services 2021	Projected Services 2022	Projected Services 2023	Projected Services 2024	Projected Services 2025	Projected Services 2026	Projected Services 2027	Projected Services 2028	Projected Services 2029	Projected Services 2030
Resident	20,311	20,320	20,328	20,337	20,345	20,354	20,362	20,371	20,379	20,388
Multi- Residential	136	136	137	137	137	137	137	137	137	137
Commercial	5,124	5,128	5,132	5,136	5,140	5,144	5,149	5,153	5,157	5,161
Industrial	115	115	115	115	115	116	116	116	116	116
Government	417	422	426	431	436	440	445	450	455	460
Other	20	20	20	20	20	20	20	20	20	20
Total	26,124	26,141	26,158	26,176	26,194	26,211	26,229	26,247	26,264	26,282

2030's Projections

Customer Type	Projected Services 2031	Projected Services 2032	Projected Services 2033	Projected Services 2034	Projected Services 2035	Projected Services 2036	Projected Services 2037	Projected Services 2038	Projected Services 2039	Projected Services 2040
Resident	20,397	20,405	20,414	20,422	20,431	20,439	20,448	20,457	20,465	20,474
Multi- Residential	137	138	138	138	138	138	138	138	138	138
Commercial	5,165	5,169	5,173	5,177	5,182	5,186	5,190	5,194	5,198	5,202
Industrial	116	116	116	116	116	116	117	117	117	117
Government	465	470	475	480	486	491	496	502	507	513
Other	20	20	20	20	20	20	20	20	20	21
Total	26,300	26,318	26,336	26,354	26,373	26,391	26,409	26,428	26,446	26,465

East Los Angeles District Historic & Projected Services

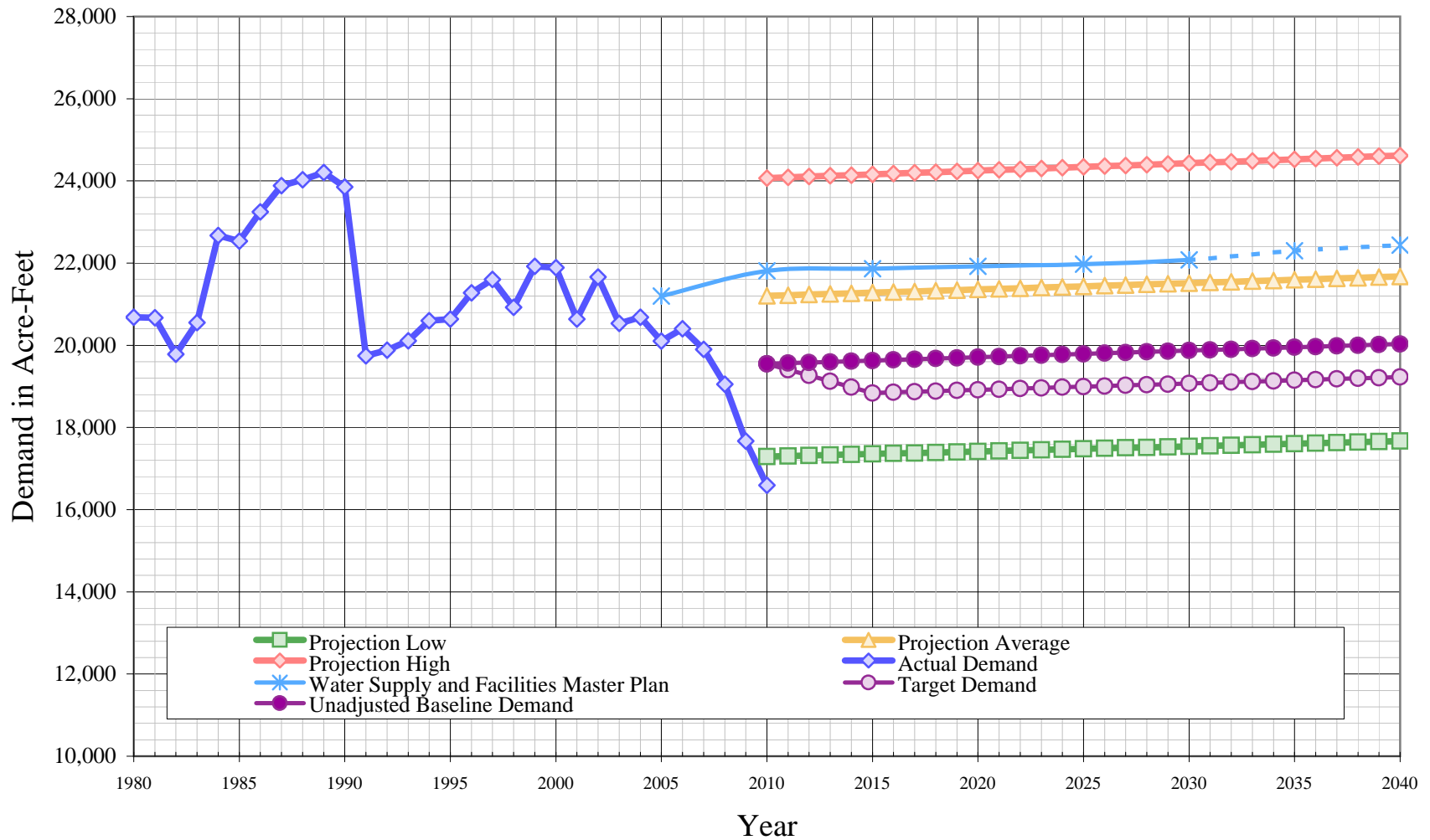


California Water Service Company - East Los Angeles District
Water Supply and Demand Analysis and Projections
Projected Annual Average Services

Year	Actual Services	Projected Services	
		15-Year Avg. (Selected)	10-Year Avg.
1980	25,255		
1981	25,353		
1982	25,464		
1983	25,503		
1984	25,534		
1985	25,576		
1986	25,605		
1987	25,626		
1988	25,621		
1989	25,620		
1990	25,674		
1991	25,742		
1992	25,804		
1993	25,822		
1994	25,790		
1995	25,759		
1996	25,741		
1997	25,692		
1998	25,699		
1999	25,713		
2000	25,777		
2001	25,792		
2002	25,834		
2003	25,903		
2004	25,915		
2005	25,977		
2006	25,973		
2007	25,989		
2008	25,970		
2009	25,919	25,919	25,919
2010	25,953	25,929	25,936

Year	Actual Services	Projected Services	
		15-Year Avg. (Selected)	10-Year Avg.
2011		25,938	25,953
2012		25,948	25,969
2013		25,957	25,986
2014		25,967	26,003
2015		25,976	26,020
2016		25,986	26,037
2017		25,996	26,055
2018		26,005	26,072
2019		26,015	26,089
2020		26,025	26,106
2021		26,034	26,124
2022		26,044	26,141
2023		26,054	26,158
2024		26,063	26,176
2025		26,073	26,194
2026		26,083	26,211
2027		26,092	26,229
2028		26,102	26,247
2029		26,112	26,264
2030		26,122	26,282
2031		26,131	26,300
2032		26,141	26,318
2033		26,151	26,336
2034		26,161	26,354
2035		26,170	26,373
2036		26,180	26,391
2037		26,190	26,409
2038		26,200	26,428
2039		26,210	26,446
2040		26,219	26,465

East Los Angeles District Historic & Projected Demand



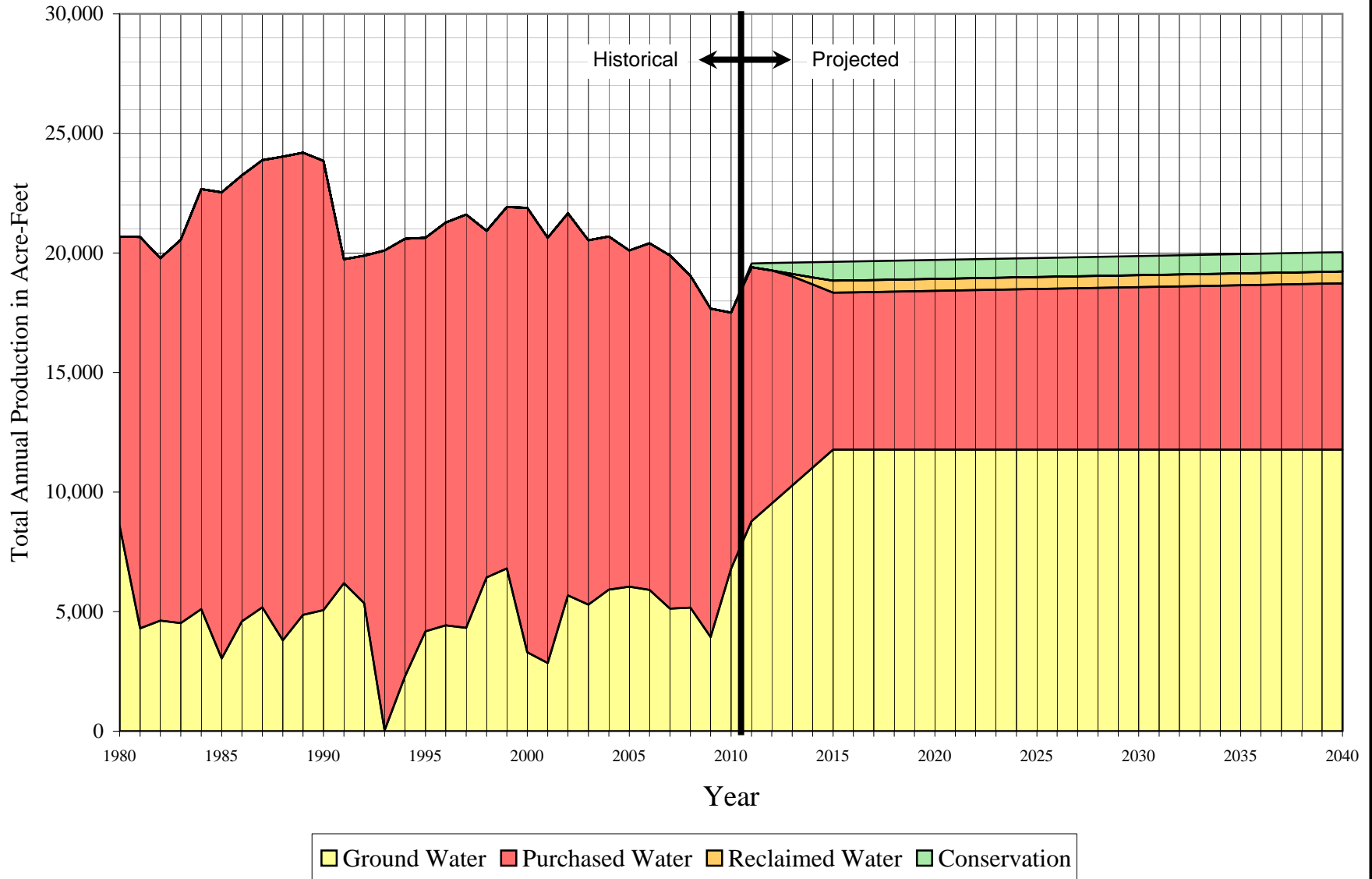
California Water Service Company - East Los Angeles District
Water Supply and Demand Analysis and Projections
Projected Demand in Acre-Fee

Year	Actual Demand	Projection			Unadjusted Baseline Demand	Target Demand	WS&FMP
		Low	Average	High			
1980	20,684						
1981	20,673						
1982	19,781						
1983	20,552						
1984	22,674						
1985	22,537						
1986	23,247						
1987	23,887						
1988	24,031						
1989	24,201						
1990	23,855						
1991	19,744						
1992	19,883						
1993	20,108						
1994	20,595						
1995	20,635						
1996	21,274						
1997	21,603						
1998	20,925						
1999	21,921						
2000	21,892						
2001	20,639						
2002	21,664						
2003	20,534						
2004	20,686						
2005	20,101					21,201	
2006	20,405						
2007	19,897						
2008	19,051						
2009	17,668						
2010	16,592	17,294	21,205	24,071	19,548	19,548	21,813

Year	Actual Demand	Projection			Unadjusted Baseline Demand	Target Demand	WS&FMP
		Low	Average	High			
2011		17,306	21,220	24,088	19,565	19,408	
2012		17,318	21,235	24,106	19,581	19,265	
2013		17,330	21,251	24,124	19,596	19,123	
2014		17,342	21,266	24,141	19,613	18,981	
2015		17,355	21,281	24,159	19,629	18,838	21,866
2016		17,367	21,296	24,177	19,645	18,854	
2017		17,379	21,312	24,195	19,661	18,869	
2018		17,391	21,327	24,213	19,677	18,884	
2019		17,404	21,342	24,231	19,693	18,900	
2020		17,416	21,358	24,249	19,709	18,915	21,919
2021		17,428	21,373	24,267	19,726	18,931	
2022		17,441	21,389	24,285	19,741	18,946	
2023		17,453	21,404	24,303	19,758	18,962	
2024		17,466	21,420	24,321	19,774	18,977	
2025		17,478	21,435	24,340	19,791	18,994	21,972
2026		17,491	21,451	24,358	19,806	19,008	
2027		17,503	21,467	24,376	19,823	19,025	
2028		17,516	21,483	24,395	19,838	19,040	
2029		17,528	21,498	24,413	19,854	19,054	
2030		17,541	21,514	24,431	19,871	19,071	22,078
2031		17,554	21,530	24,450	19,886	19,086	
2032		17,566	21,546	24,468	19,903	19,102	
2033		17,579	21,562	24,487	19,920	19,118	
2034		17,592	21,578	24,506	19,936	19,133	
2035		17,605	21,594	24,524	19,952	19,149	22,300
2036		17,617	21,610	24,543	19,968	19,164	
2037		17,630	21,626	24,562	19,985	19,180	
2038		17,643	21,642	24,581	20,000	19,195	
2039		17,656	21,658	24,599	20,017	19,211	
2040		17,669	21,674	24,618	20,033	19,226	22,440

East Los Angeles District

Historical and Projected Distribution of Demand by Source



California Water Service Company - East Los Angeles District
Water Supply and Demand Analysis and Projections
Historical and Projected Distribution of Demand by Source

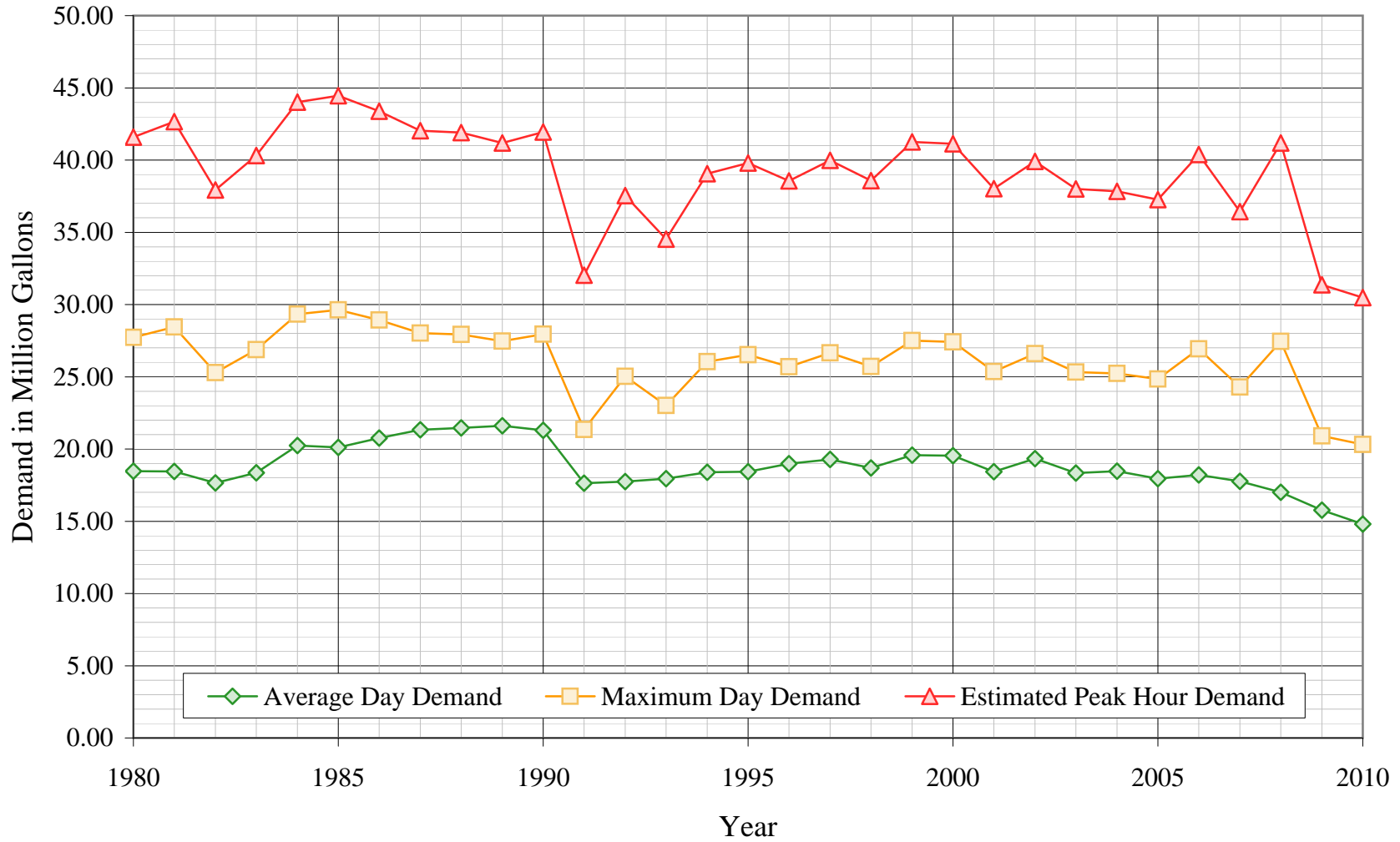
Worksheet 17

Year	Purchased Water		Reclaimed Water		Ground Water		Conservation		Total	
	(kGal)	(AF)	(kGal)	(AF)	(kGal)	(AF)	(kGal)	(AF)	(kGal)	(AF)
1980	3,946,460	12,111	0	0	2,793,571	8,573			6,740,031	20,684
1981	5,333,918	16,369	0	0	1,402,348	4,304			6,736,266	20,673
1982	4,937,267	15,152	0	0	1,508,267	4,629			6,445,534	19,781
1983	5,225,050	16,035	0	0	1,471,714	4,517			6,696,764	20,552
1984	5,725,246	17,570	0	0	1,663,205	5,104			7,388,451	22,674
1985	6,353,248	19,497	0	0	990,363	3,039			7,343,611	22,537
1986	6,077,631	18,652	0	0	1,497,291	4,595			7,574,922	23,247
1987	6,097,523	18,713	0	0	1,686,079	5,174			7,783,602	23,887
1988	6,593,252	20,234	0	0	1,237,250	3,797			7,830,502	24,031
1989	6,300,882	19,337	0	0	1,585,153	4,865			7,886,035	24,201
1990	6,124,282	18,795	0	0	1,648,803	5,060			7,773,085	23,855
1991	4,417,053	13,555	0	0	2,016,511	6,188			6,433,564	19,744
1992	4,733,913	14,528	0	0	1,744,876	5,355			6,478,789	19,883
1993	6,543,646	20,082	0	0	8,514	26			6,552,160	20,108
1994	5,961,029	18,294	0	0	749,805	2,301			6,710,834	20,595
1995	5,363,509	16,460	0	0	1,360,448	4,175			6,723,957	20,635
1996	5,491,612	16,853	0	0	1,440,566	4,421			6,932,178	21,274
1997	5,630,466	17,279	0	0	1,408,790	4,323			7,039,256	21,603
1998	4,722,602	14,493	0	0	2,095,820	6,432			6,818,422	20,925
1999	4,926,437	15,119	0	0	2,216,467	6,802			7,142,904	21,921
2000	6,059,893	18,597	0	0	1,073,499	3,294			7,133,392	21,892
2001	5,796,459	17,789	0	0	928,705	2,850			6,725,164	20,639
2002	5,209,655	15,988	0	0	1,849,619	5,676			7,059,274	21,664
2003	4,966,044	15,240	0	0	1,724,989	5,294			6,691,033	20,534
2004	4,810,273	14,762	0	0	1,930,217	5,924			6,740,490	20,686
2005	4,579,093	14,053	0	0	1,970,894	6,048			6,549,987	20,101
2006	4,723,843	14,497	0	0	1,925,061	5,908			6,648,904	20,405
2007	4,813,181	14,771	0	0	1,670,215	5,126			6,483,396	19,897
2008	4,524,450	13,885	0	0	1,683,402	5,166			6,207,852	19,051
2009	4,475,282	13,734	0	0	1,281,923	3,934			5,757,205	17,668
2010	3,487,941	10,704	0	0	2,215,790	6,800	0	0	5,703,737	17,504

Year	Purchased Water		Reclaimed Water		Ground Water		Conservation		Total	
	(kGal)	(AF)	(kGal)	(AF)	(kGal)	(AF)	(kGal)	(AF)	(kGal)	(AF)
2011	3,464,948	10,634	0	0	2,859,021	8,774	51,346	158	6,375,315	19,565
2012	3,174,197	9,741	0	0	3,103,409	9,524	102,774	315	6,380,380	19,581
2013	2,850,780	8,749	32,585	100	3,347,798	10,274	154,283	473	6,385,446	19,596
2014	2,495,104	7,657	97,755	300	3,592,186	11,024	205,888	632	6,390,934	19,613
2015	2,138,935	6,564	162,926	500	3,836,575	11,774	257,564	790	6,396,000	19,629
2016	2,144,202	6,580	162,926	500	3,836,575	11,774	257,785	791	6,401,488	19,645
2017	2,149,064	6,595	162,926	500	3,836,575	11,774	257,989	792	6,406,554	19,661
2018	2,153,926	6,610	162,926	500	3,836,575	11,774	258,193	792	6,411,620	19,677
2019	2,159,193	6,626	162,926	500	3,836,575	11,774	258,414	793	6,417,107	19,693
2020	2,164,055	6,641	162,926	500	3,836,575	11,774	258,618	794	6,422,173	19,709
2021	2,169,322	6,657	162,926	500	3,836,575	11,774	258,839	794	6,427,661	19,726
2022	2,174,184	6,672	162,926	500	3,836,575	11,774	259,043	795	6,432,727	19,741
2023	2,179,451	6,688	162,926	500	3,836,575	11,774	259,264	796	6,438,215	19,758
2024	2,184,312	6,703	162,926	500	3,836,575	11,774	259,468	796	6,443,281	19,774
2025	2,189,579	6,720	162,926	500	3,836,575	11,774	259,689	797	6,448,769	19,791
2026	2,194,441	6,734	162,926	500	3,836,575	11,774	259,893	798	6,453,835	19,806
2027	2,199,708	6,751	162,926	500	3,836,575	11,774	260,114	798	6,459,323	19,823
2028	2,204,570	6,766	162,926	500	3,836,575	11,774	260,318	799	6,464,388	19,838
2029	2,209,432	6,780	162,926	500	3,836,575	11,774	260,522	800	6,469,454	19,854
2030	2,214,699	6,797	162,926	500	3,836,575	11,774	260,743	800	6,474,942	19,871
2031	2,219,560	6,812	162,926	500	3,836,575	11,774	260,947	801	6,480,008	19,886
2032	2,224,827	6,828	162,926	500	3,836,575	11,774	261,168	801	6,485,496	19,903
2033	2,230,094	6,844	162,926	500	3,836,575	11,774	261,389	802	6,490,984	19,920
2034	2,234,956	6,859	162,926	500	3,836,575	11,774	261,593	803	6,496,050	19,936
2035	2,240,223	6,875	162,926	500	3,836,575	11,774	261,814	803	6,501,538	19,952
2036	2,245,085	6,890	162,926	500	3,836,575	11,774	262,018	804	6,506,603	19,968
2037	2,250,352	6,906	162,926	500	3,836,575	11,774	262,239	805	6,512,091	19,985
2038	2,255,214	6,921	162,926	500	3,836,575	11,774	262,443	805	6,517,157	20,000
2039	2,260,481	6,937	162,926	500	3,836,575	11,774	262,664	806	6,522,645	20,017
2040	2,265,342	6,952	162,926	500	3,836,575	11,774	262,868	807	6,527,711	20,033

East Los Angeles District

Maximum Day, Average Day, and Peak Demand



California Water Service Company - East Los Angeles District
Water Supply and Demand Analysis and Projections
Historical and Projected Average Day, Maximum Day, and Peak Demand

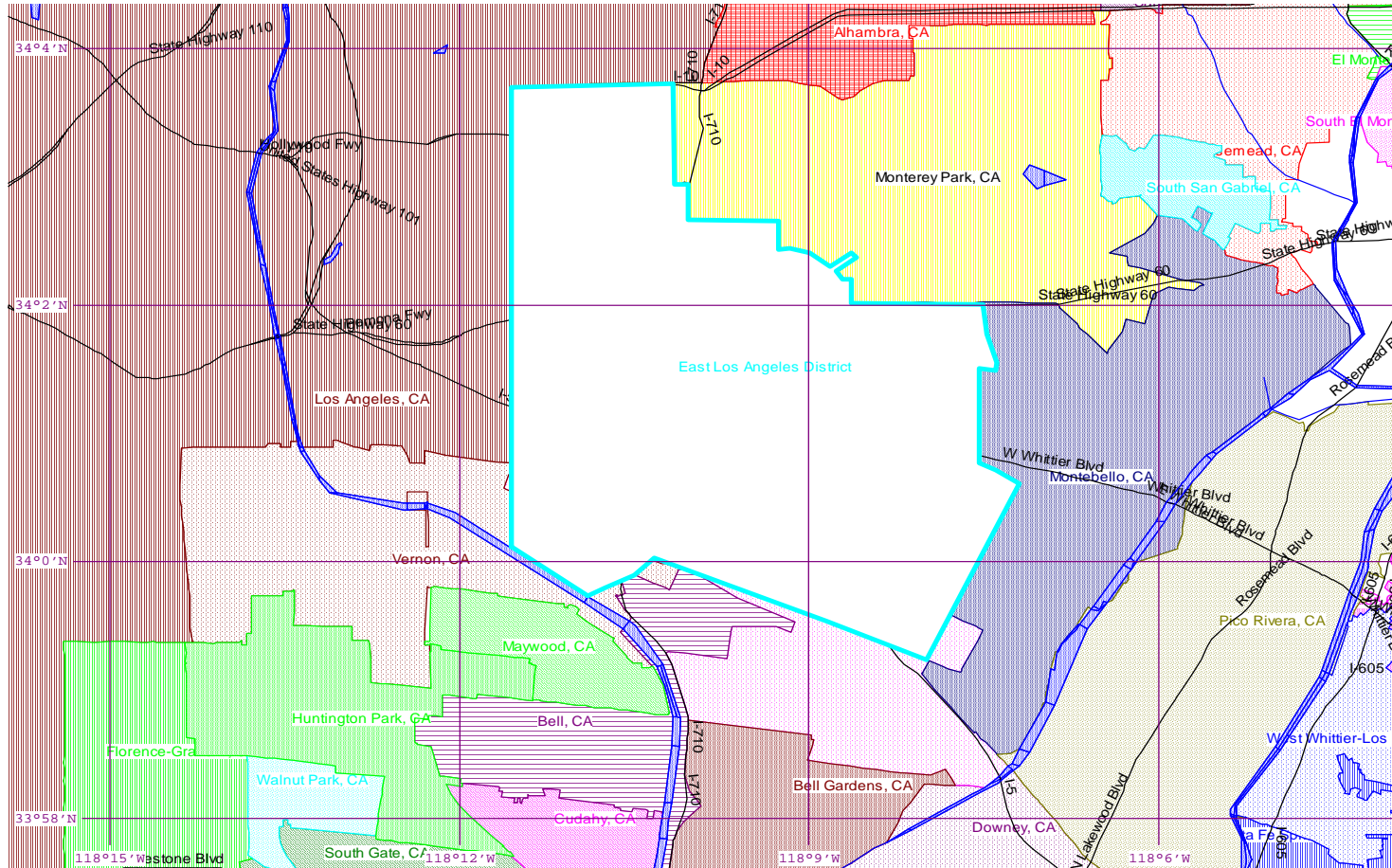
Worksheet 18

Year	Historical Annual Demand		Average Day Demand		Maximum Day Demand		MDD ADD Ratio	Estimated Peak Hour Demand		PHD MDD Ratio	PHD ADD Ratio	Measured Peak Hour Demand		PHD MDD Ratio
	(AFY)	(MGY)	(MGD)	(GPD)	(MGD)	(GPD)		(MGD)	(GPM)			(MGD)	(GPM)	
1980	20,684	6,740	18.47	731	27.73	1,098	1.50	41.59	28,880	1.50	2.25			
1981	20,673	6,736	18.46	728	28.44	1,122	1.54	42.66	29,628	1.50	2.31			
1982	19,781	6,446	17.66	693	25.29	993	1.43	37.93	26,340	1.50	2.15			
1983	20,552	6,697	18.35	719	26.88	1,054	1.46	40.32	27,998	1.50	2.20			
1984	22,674	7,388	20.24	793	29.34	1,149	1.45	44.01	30,563	1.50	2.17			
1985	22,537	7,344	20.12	787	29.63	1,159	1.47	44.45	30,868	1.50	2.21			
1986	23,247	7,575	20.75	811	28.93	1,130	1.39	43.39	30,132	1.50	2.09			
1987	23,887	7,784	21.32	832	28.02	1,093	1.31	42.03	29,185	1.50	1.97			
1988	24,031	7,830	21.45	837	27.94	1,090	1.30	41.90	29,099	1.50	1.95			
1989	24,201	7,886	21.61	843	27.46	1,072	1.27	41.19	28,605	1.50	1.91			
1990	23,855	7,773	21.30	829	27.96	1,089	1.31	41.93	29,120	1.50	1.97			
1991	19,744	6,434	17.63	685	21.35	829	1.21	32.03	22,240	1.50	1.82			
1992	19,883	6,479	17.75	688	25.03	970	1.41	37.54	26,071	1.50	2.12			
1993	20,108	6,552	17.95	695	23.02	891	1.28	34.53	23,976	1.50	1.92			
1994	20,595	6,711	18.39	713	26.04	1,010	1.42	39.06	27,123	1.50	2.12			
1995	20,635	6,724	18.42	715	26.53	1,030	1.44	39.79	27,633	1.50	2.16			
1996	21,274	6,932	18.99	738	25.70	998	1.35	38.55	26,771	1.50	2.03			
1997	21,603	7,039	19.29	751	26.65	1,037	1.38	39.98	27,760	1.50	2.07			
1998	20,925	6,818	18.68	727	25.72	1,001	1.38	38.57	26,786	1.50	2.06			
1999	21,921	7,143	19.57	761	27.50	1,070	1.41	41.26	28,650	1.50	2.11			
2000	21,892	7,133	19.54	758	27.42	1,064	1.40	41.13	28,559	1.50	2.10			
2001	20,639	6,725	18.43	714	25.35	983	1.38	38.03	26,408	1.50	2.06			
2002	21,664	7,059	19.34	749	26.60	1,030	1.38	39.90	27,708	1.50	2.06			
2003	20,534	6,691	18.33	708	25.33	978	1.38	38.00	26,388	1.50	2.07			
2004	20,686	6,740	18.47	713	25.23	973	1.37	37.84	26,279	1.50	2.05			
2005	20,101	6,550	17.95	691	24.84	956	1.38	37.26	25,875	1.50	2.08			
2006	20,405	6,649	18.22	701	26.93	1,037	1.48	40.39	28,049	1.50	2.22			
2007	19,897	6,483	17.76	683	24.29	934	1.37	36.43	25,298	1.50	2.05			
2008	19,051	6,208	17.01	655	27.45	1,057	1.61	41.18	28,594	1.50	2.42			
2009	17,668	5,757	15.77	609	20.91	807	1.33	31.37	21,783	1.50	1.99			
2010	16,592	5,407	14.81	571	20.32	783	1.37	30.48	21,168	1.50	2.06			
5 year Average (2006-2010)			16.71	644	23.98	924	1.43	35.97	24,978	1.50	2.15			
10 year Average (2001-2010)			17.61	679	24.72	954	1.40	37.09	25,755	1.50	2.11			

California Water Service Company - East Los Angeles District

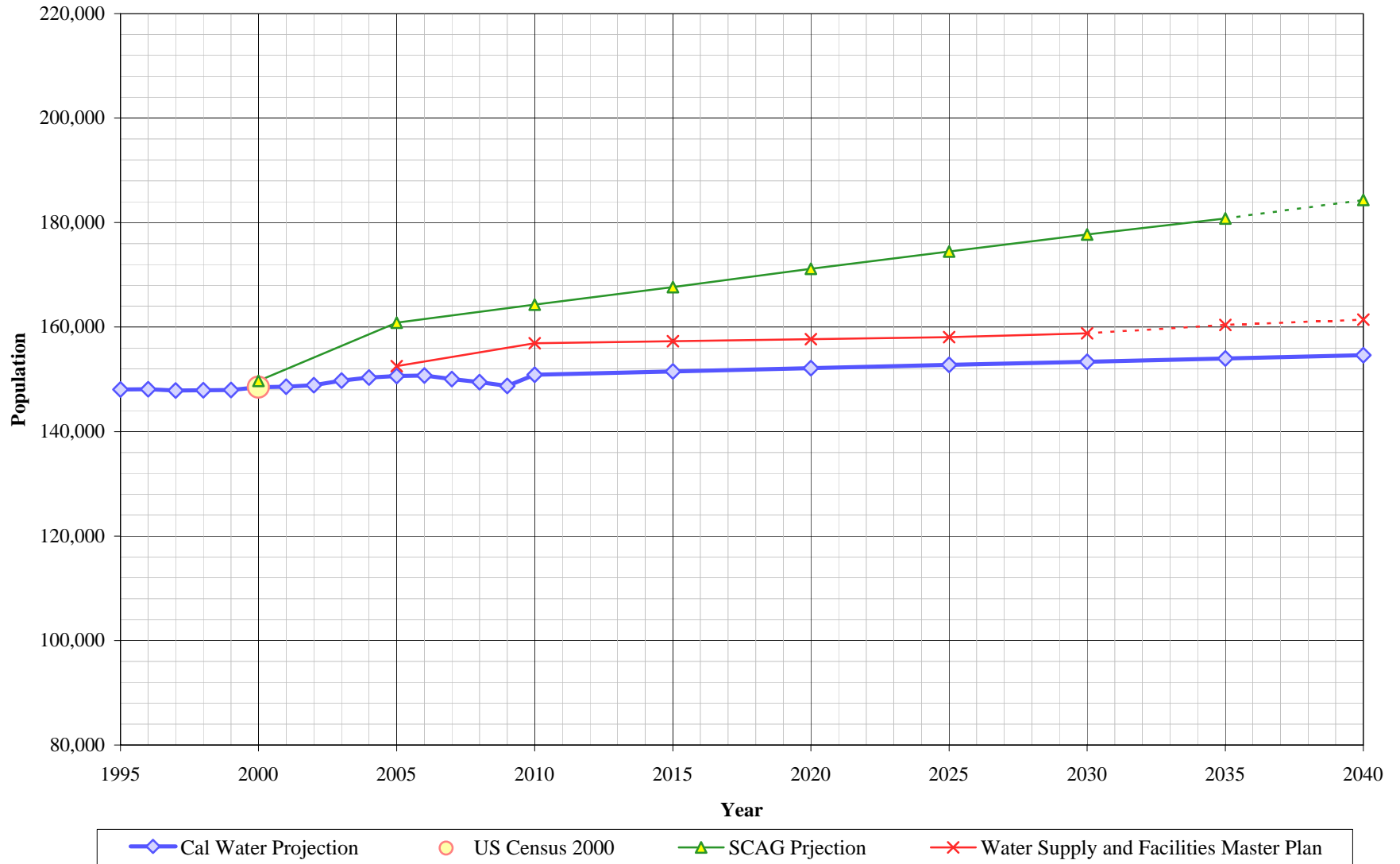
Water Supply and Demand Analysis and Projections

US Census 2000 Tract Map Summary



Census Tract Blocks	Population	Housing Units
950	148,480	38,246

East Los Angeles District Population Estimate



California Water Service Company - East Los Angeles District
Water Supply and Demand Analysis and Projections

Population as of the 2000 Average Annual Services
 Estimated District Population based on 2000 U.S. Census Data & Annual Service Count

District Communities Served: East Los Angeles, parts of Montebello and Commerce

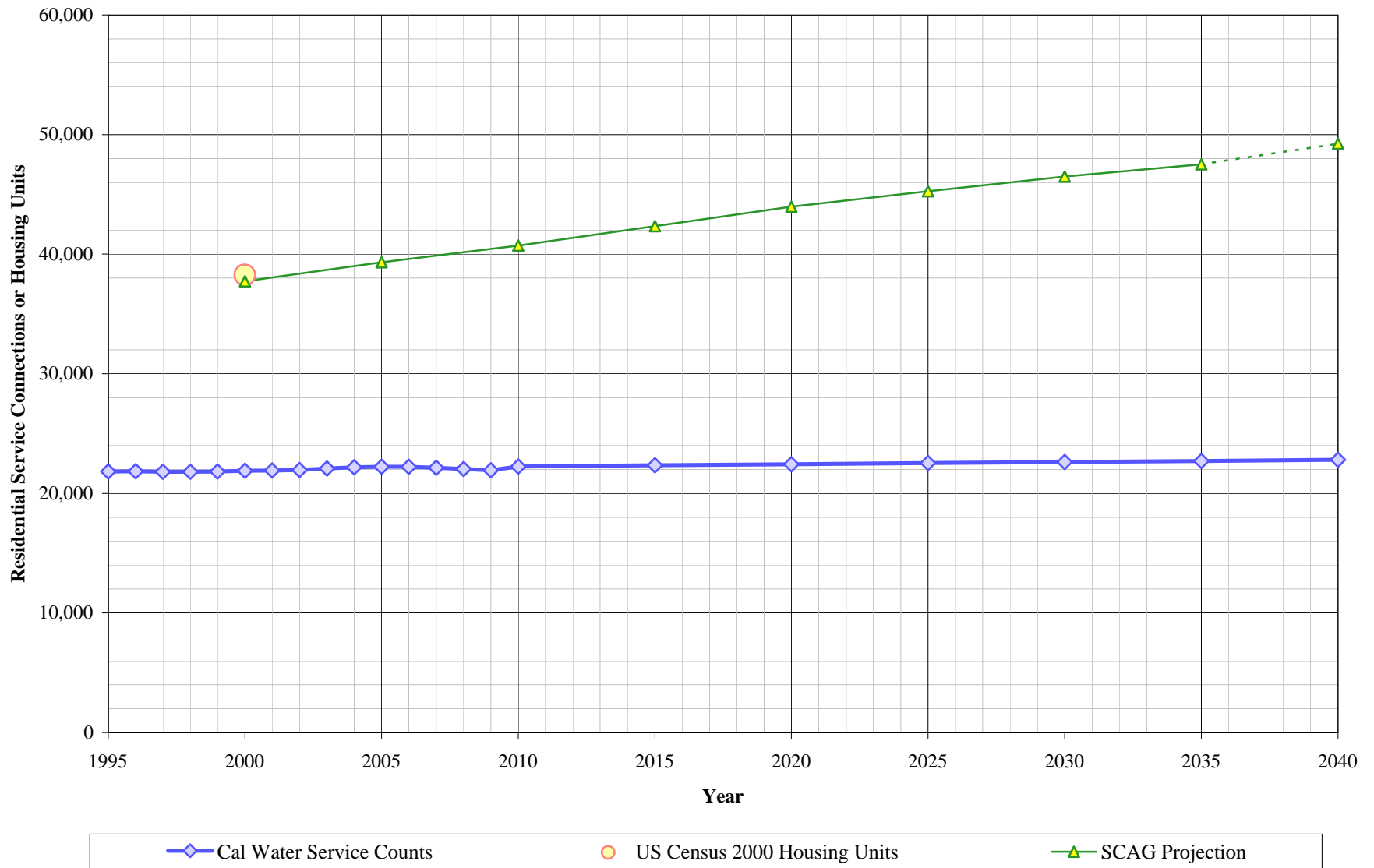
Year	Single Family Residential Services (DU)	Multi Family Residential			Flat Rate Residential Services (DU)	Total Residential Dwelling Units	Estimated District Population
		Services	Residential Units (DU)	Unit Density			
1995	20,140	136	1,695	12.5	0	21,835	148,060
1996	20,141	136	1,698	12.5	0	21,839	148,090
1997	20,109	136	1,695	12.5	0	21,804	147,850
1998	20,114	136	1,699	12.5	0	21,813	147,910
1999	20,124	136	1,700	12.5	0	21,824	147,980
2000	20,197	136	1,700	12.5	0	21,897	148,480
2001	20,215	136	1,695	12.5	0	21,910	148,570
2002	20,264	136	1,694	12.5	0	21,958	148,890
2003	20,319	136	1,765	13.0	0	22,084	149,750
2004	20,321	136	1,853	13.6	0	22,174	150,360
2005	20,371	136	1,845	13.6	0	22,216	150,640
2006	20,381	136	1,849	13.6	0	22,230	150,740
2007	20,395	135	1,736	12.9	0	22,131	150,070
2008	20,317	136	1,727	12.7	0	22,044	149,480
2009	20,209	135	1,727	12.8	0	21,936	148,740
2010	20,214	135	2,039	15.1	0	22,253	150,890
2015	20,240	135	2,104	15.6	0	22,344	151,510
2020	20,265	135	2,170	16.0	0	22,436	152,130
2025	20,291	136	2,236	16.5	0	22,528	152,760
2030	20,317	136	2,303	16.9	0	22,620	153,380
2035	20,343	136	2,369	17.4	0	22,712	154,010
2040	20,368	136	2,436	17.9	0	22,804	154,630

US Census 2000		Calculated Persons per CWS DU	Calculated Persons per US Census Housing Unit
Population	Housing Units		

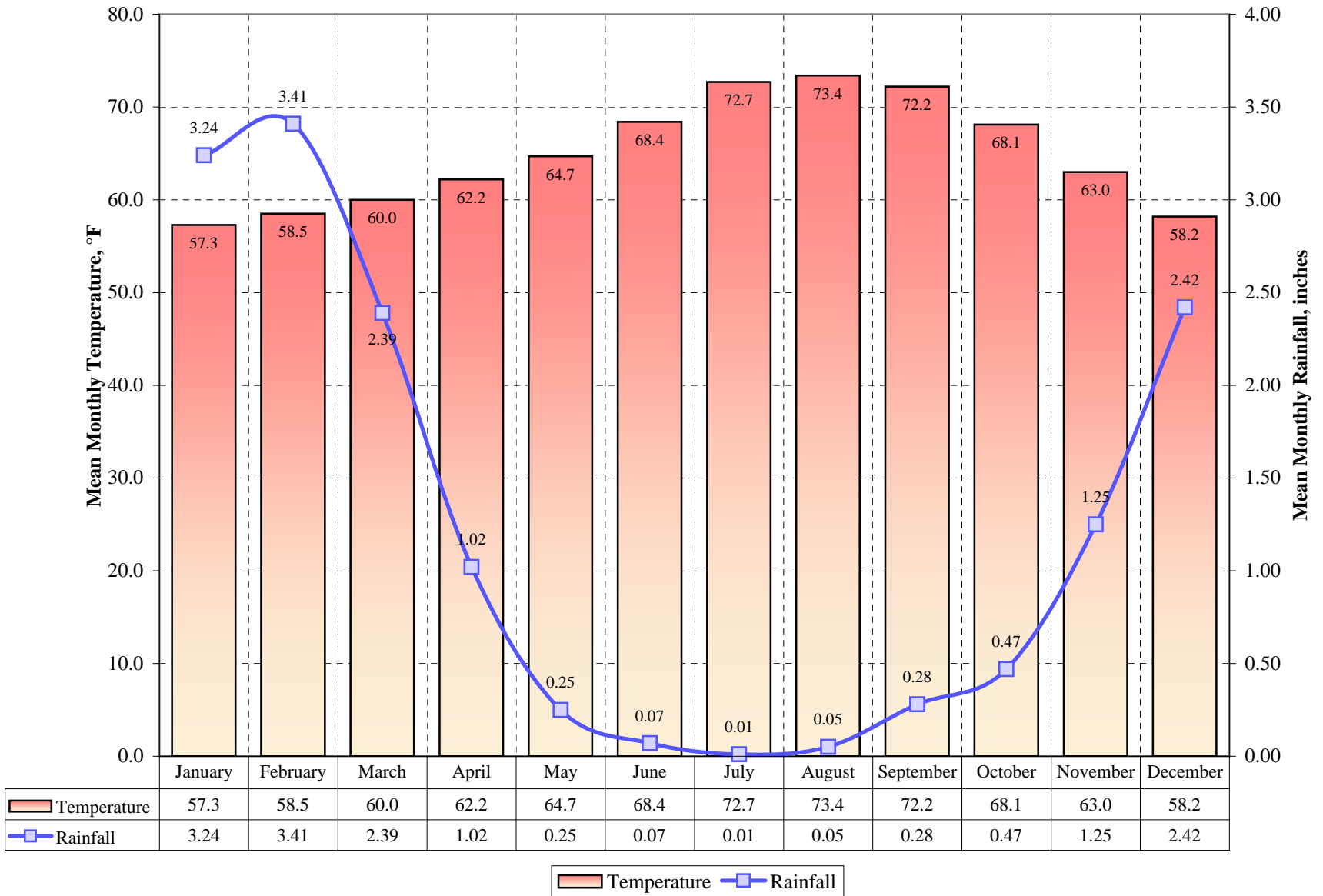
148,480	38,246	6.781	3.882
---------	--------	-------	-------

* MFR units estimate based on 4 year trend of ratio of Multi Units to Services

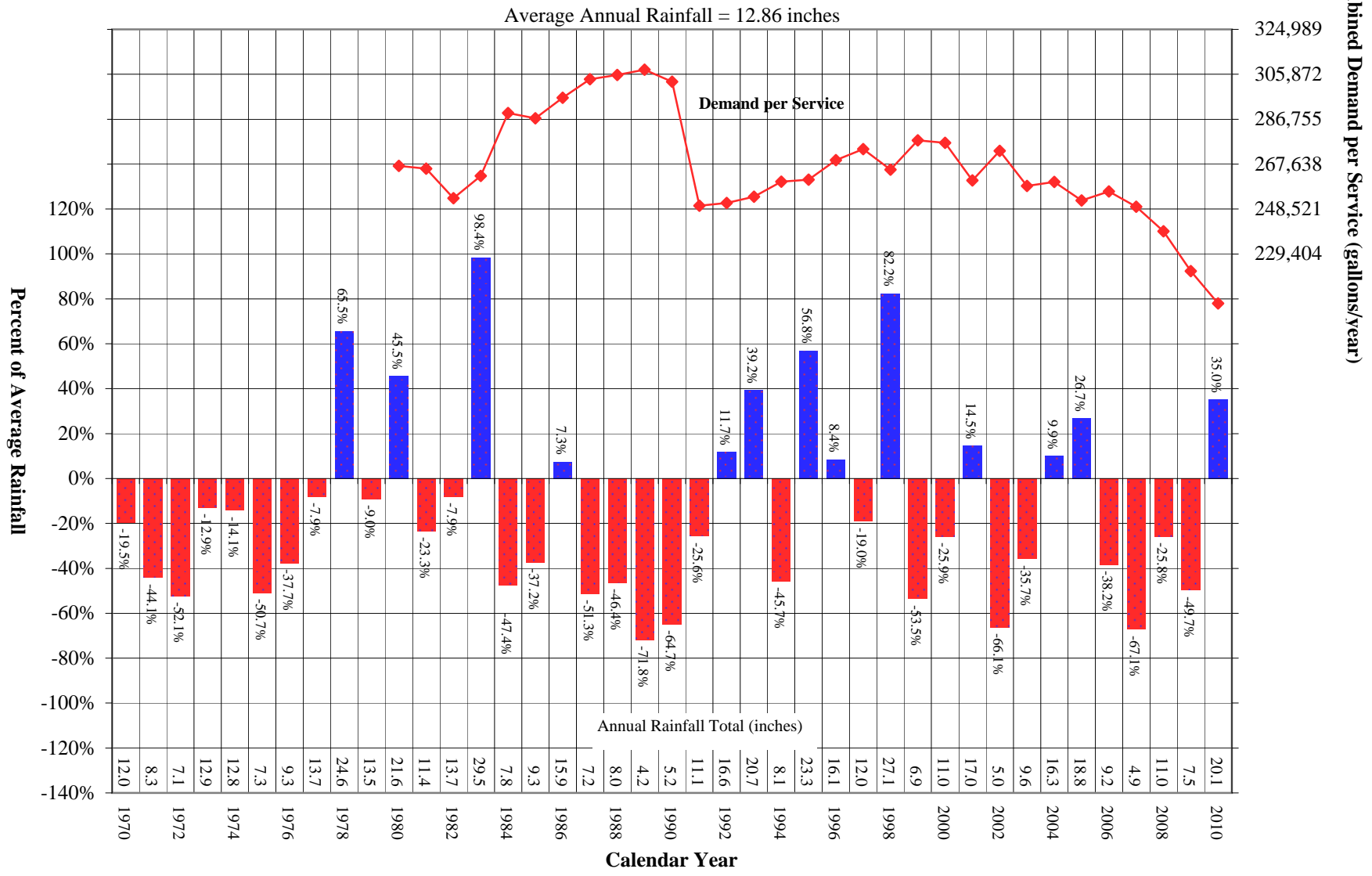
East Los Angeles District Housing Estimate



East Los Angeles District Average Monthly Temperature and Rainfall



East Los Angeles District Comparison of Annual Rainfall to Historical Average



California Water Service Company - East Los Angeles District

Water Supply and Demand Analysis and Projections

Temperature & Rainfall History

Year	Annual Average Temp.	Annual Average Rainfall	Rainfall Percent Variation	Demand per Service (Gal / Yr)	Percent of Average Demand	Year	Annual Average Temp.	Annual Average Rainfall	Rainfall Percent Variation	Demand per Service (Gal / Yr)	Percent of Average Demand
1970	66.1	11.95	-19.5%			1995	67.8	23.28	56.8%	261,033	98.0%
1971	65.1	8.30	-44.1%			1996	67.6	16.09	8.4%	269,305	101.1%
1972	66.5	7.12	-52.1%			1997	68.3	12.03	-19.0%	273,986	102.8%
1973	65.0	12.93	-12.9%			1998	66.1	27.06	82.2%	265,319	99.6%
1974	65.3	12.76	-14.1%			1999	64.2	6.91	-53.5%	277,793	104.3%
1975	63.0	7.32	-50.7%			2000	65.1	11.01	-25.9%	276,735	103.9%
1976	65.2	9.25	-37.7%			2001	64.0	17.01	14.5%	260,746	97.9%
1977	65.9	13.68	-7.9%			2002	64.4	5.03	-66.1%	273,255	102.6%
1978	65.5	24.58	65.5%			2003	65.4	9.55	-35.7%	258,311	97.0%
1979	65.4	13.52	-9.0%			2004	65.4	16.32	9.9%	260,101	97.6%
1980	67.7	21.60	45.5%	266,879	100.2%	2005	65.1	18.81	26.7%	252,143	94.6%
1981	68.9	11.39	-23.3%	265,699	99.7%	2006	66.8	9.18	-38.2%	255,993	96.1%
1982	65.5	13.68	-7.9%	253,123	95.0%	2007	65.6	4.89	-67.1%	249,467	93.6%
1983	68.9	29.46	98.4%	262,587	98.6%	2008	66.4	11.02	-25.8%	239,039	89.7%
1984	68.4	7.81	-47.4%	289,357	108.6%	2009	66.2	7.47	-49.7%	222,123	83.4%
1985	67.0	9.32	-37.2%	287,129	107.8%	2010	65.7	20.05	35.0%	208,325	78.2%
1986	67.7	15.93	7.3%	295,838	111.0%	2011					
1987	66.0	7.23	-51.3%	303,738	114.0%	2012					
1988	66.1	7.96	-46.4%	305,628	114.7%	2013					
1989	66.6	4.19	-71.8%	307,808	115.5%	2014					
1990	67.5	5.24	-64.7%	302,761	113.6%	2015					
1991	65.8	11.05	-25.6%	249,925	93.8%	2016					
1992	68.0	16.59	11.7%	251,077	94.2%	2017					
1993	67.2	20.67	39.2%	253,743	95.2%	2018					
1994	67.5	8.07	-45.7%	260,211	97.7%	2019					

Source: Western Regional Climate Center: <http://www.wrcc.dri.edu/cgi-bin/cliMAIN.pl?ca5115>

Calendar Year	Average Water Year	Normal Water Year	Single-Dry Water Year	Multiple-Dry Water Years			
				1	2	3	4
2004	-	2004	2002	2006	2007	2008	2009
Demand per Service (gal/yr)	266,410	260,101	273,255	255,993	249,467	239,039	222,123
Difference from Average	100.0%	100.0%	105.1%	98.4%	95.9%	91.9%	85.4%

California Water Service Company - East Los Angeles District Water Supply and Demand Analysis and Projections

Temperature Data

Station:(045115) LOS ANGELES CIVIC CENTE															
From Year=1906 To Year=2010															
	Monthly Averages			Daily Extremes				Monthly Extremes				Max. Temp.		Min. Temp.	
	Max.	Min.	Mean	High	Date	Low	Date	Highest Mean	Year	Lowest Mean	Year	>= 90 F	<= 32 F	<= 32 F	<= 0 F
	F	F	F	F	dd/yyyy or yyyymmdd	F	dd/yyyy or yyyymmdd	F	-	F	-	# Days	# Days	# Days	# Days
January	66.3	48.3	57.3	95.0	18/1971	28.0	7/1913	65.9	1986	46.9	1949	0.1	0.0	0.1	0.0
February	67.3	49.6	58.5	95.0	20/1995	25.0	19/1911	65.3	1995	51.9	1911	0.1	0.0	0.0	0.0
March	68.8	51.1	60.0	98.0	26/1988	35.0	4/1976	66.0	1931	54.6	1945	0.2	0.0	0.0	0.0
April	71.0	53.4	62.2	106.0	6/1989	39.0	7/1975	69.6	1992	56.0	1975	0.8	0.0	0.0	0.0
May	72.9	56.5	64.7	102.0	16/1967	40.0	12/1933	72.6	1997	58.7	1917	0.8	0.0	0.0	0.0
June	77.0	59.7	68.4	112.0	26/1990	49.0	1/1917	77.4	1981	63.4	1944	1.3	0.0	0.0	0.0
July	82.3	63.2	72.7	107.0	1/1985	53.0	17/1907	79.9	2006	66.6	1944	3.2	0.0	0.0	0.0
August	83.1	63.8	73.4	105.0	6/1983	52.0	25/1909	80.8	1983	68.1	1914	4.1	0.0	0.0	0.0
September	81.8	62.6	72.2	113.0	27/2010	50.0	22/1921	81.3	1984	64.6	1933	4.9	0.0	0.0	0.0
October	77.6	58.7	68.1	108.0	3/1987	41.0	30/1971	74.2	1983	59.7	1916	3.1	0.0	0.0	0.0
November	72.8	53.3	63.0	100.0	1/1966	37.0	28/1919	68.9	1932	57.9	1906	0.8	0.0	0.0	0.0
December	67.4	49.1	58.2	92.0	8/1938	30.0	8/1978	64.2	1939	52.6	1916	0.0	0.0	0.0	0.0
Annual	74.0	55.8	64.9	113.0	20100927	25.0	19110219	68.9	1981	60.9	1916	19.5	0.0	0.1	0.0

Source: Western Regional Climate Center: <http://www.wrcc.dri.edu/cgi-bin/cliMAIN.pl?ca5115>

	Jan	Feb	Mar	Apr	May	Jun	Jul	Aug	Sep	Oct	Nov	Dec	Total
Monthly Average ETo Report	1.86	2.24	3.41	4.80	5.58	6.30	6.51	6.20	4.80	3.72	2.40	1.86	49.68

Source: California Irrigation Management Information System (CIMIS), EvapoTranspiration (Eto) Zones Map, Zone 6:

<http://www.cimis.water.ca.gov/cimis/welcome.jsp>

California Water Service Company - East Los Angeles District Water Supply and Demand Analysis and Projections

Precipitaion Data

Station:(045115) LOS ANGELES CIVIC CENTE														
From Year=1906 To Year=2010														
Precipitation											Total Snowfall			
	Mean	High	Year	Low	Year	1 Day Max.	>=	>=	>=	>=	Mean	High	Year	
	in.	in.	-	in.	-	in.	dd/yyyy or yyyymmdd	# Days	# Days	# Days	# Days	in.	in.	-
January	3.24	14.94	1969	0.00	1948	5.71	26/1956	6.00	5.00	2.00	1.00	0.00	0.30	1949
February	3.41	13.68	1998	0.00	1912	4.80	24/1913	6.00	5.00	2.00	1.00	0.00	0.00	1949
March	2.39	8.37	1983	0.00	1931	5.88	2/1938	6.00	4.00	2.00	1.00	0.00	0.00	1949
April	1.02	7.53	1926	0.00	1909	2.74	5/1926	4.00	2.00	1.00	0.00	0.00	0.20	1950
May	0.25	3.57	1921	0.00	1923	2.02	8/1977	1.00	1.00	0.00	0.00	0.00	0.00	1949
June	0.07	0.98	1999	0.00	1908	0.76	5/1993	1.00	0.00	0.00	0.00	0.00	0.00	1913
July	0.01	0.18	1986	0.00	1907	0.60	25/1906	0.00	0.00	0.00	0.00	0.00	0.00	1948
August	0.05	2.26	1977	0.00	1907	2.06	17/1977	0.00	0.00	0.00	0.00	0.00	0.00	1948
September	0.28	5.67	1939	0.00	1907	3.96	25/1939	1.00	0.00	0.00	0.00	0.00	0.00	1948
October	0.47	4.56	2004	0.00	1913	1.72	17/1934	2.00	1.00	0.00	0.00	0.00	0.00	1948
November	1.25	9.68	1965	0.00	1907	3.85	7/1966	3.00	2.00	1.00	0.00	0.00	0.00	1948
December	2.42	10.23	2010	0.00	1912	5.55	28/2004	5.00	4.00	2.00	1.00	0.00	0.00	1948
Annual	14.85	34.04	1983	3.85	1953	5.88	19380302	36.00	23.00	10.00	4.00	0.00	0.30	1949

California Water Service Company - East Los Angeles District
Water Supply and Demand Analysis and Projections

Groundwater Facilities

	UNIT NO.	Design Capacity		Notes
		Active (GPM)	Inactive (GPM)	
1	ELA-W-007-02		600	Standby
2	ELA-W-010-03	900		Active
3	ELA-W-013-02	400		Active
4	ELA-W-019-03		380	Inactive
5	ELA-W-019-04		190	Inactive
6	ELA-W-020-01		250	Inactive
7	ELA-W-022-01	400		Active
8	ELA-W-025-01	300		Active
9	ELA-W-029-02		300	Standby
10	ELA-W-033-01		1,500	Inactive
11	ELA-W-037-01		450	Inactive
12	ELA-W-038-02	700		Active
13	ELA-W-039-01	400		Active
14	ELA-W-043-01	500		Active
15	ELA-W-051-01	550		Active
16	ELA-W-052-01	280		Standby
17	ELA-W-053-01		600	Inactive
18	ELA-W-054-01	850		Active
19	ELA-W-056-01		800	Inactive
Number of Units		10	9	
		5,280	5,070	GPM
Total		7.60	7.30	MGD
		8,517	8,178	AFY

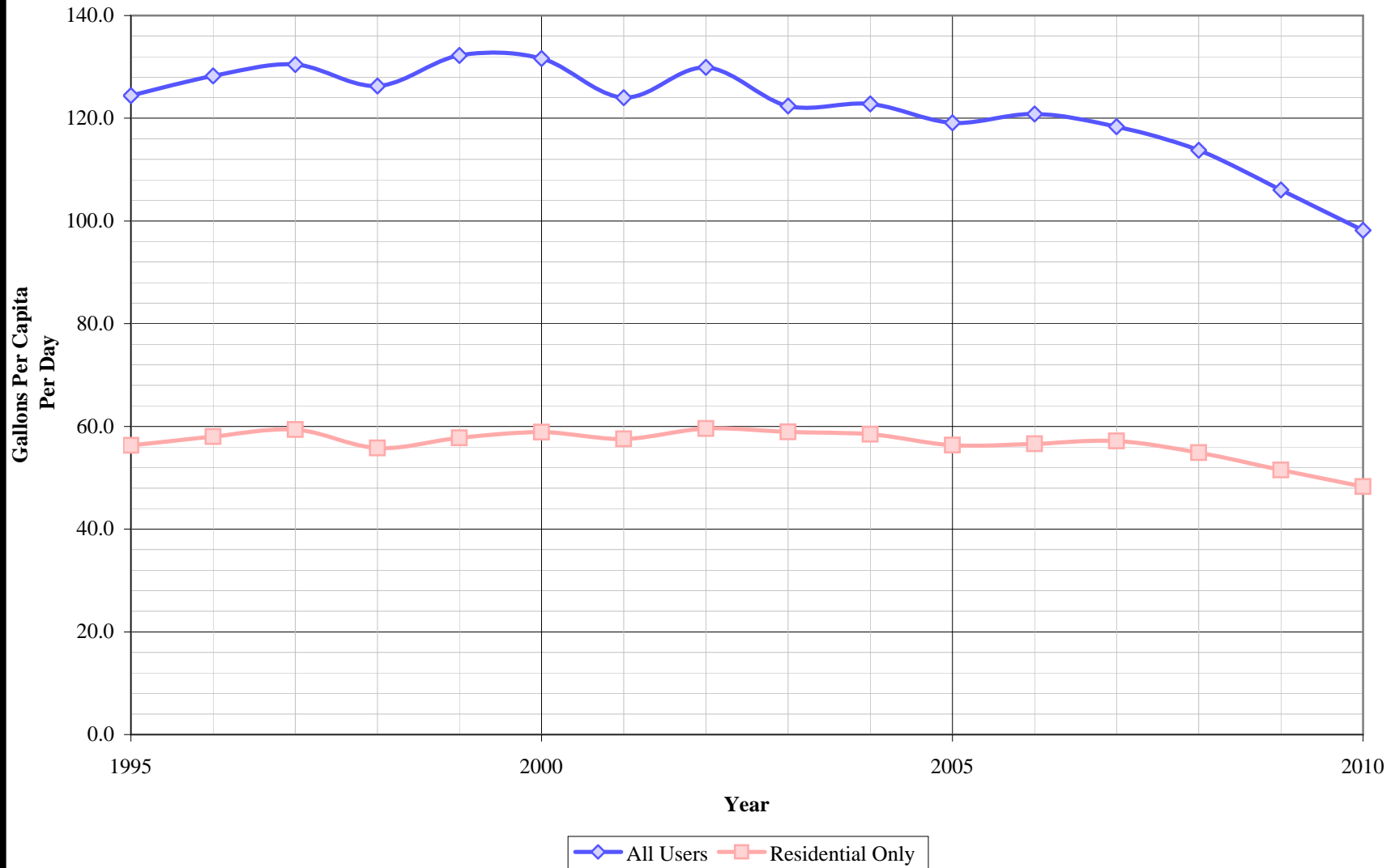
Notes:

1) Listed pump capacities on this worksheet represent design flowrates, actual flowrates are highly dependent on local system pressures, well characteristics, and other design criteria

2) Values in bold are estimated

Updated 1/1/2011

East Los Angeles District Per Capita Consumption



California Water Service Company - East Los Angeles District
Water Supply and Demand Analysis and Projections

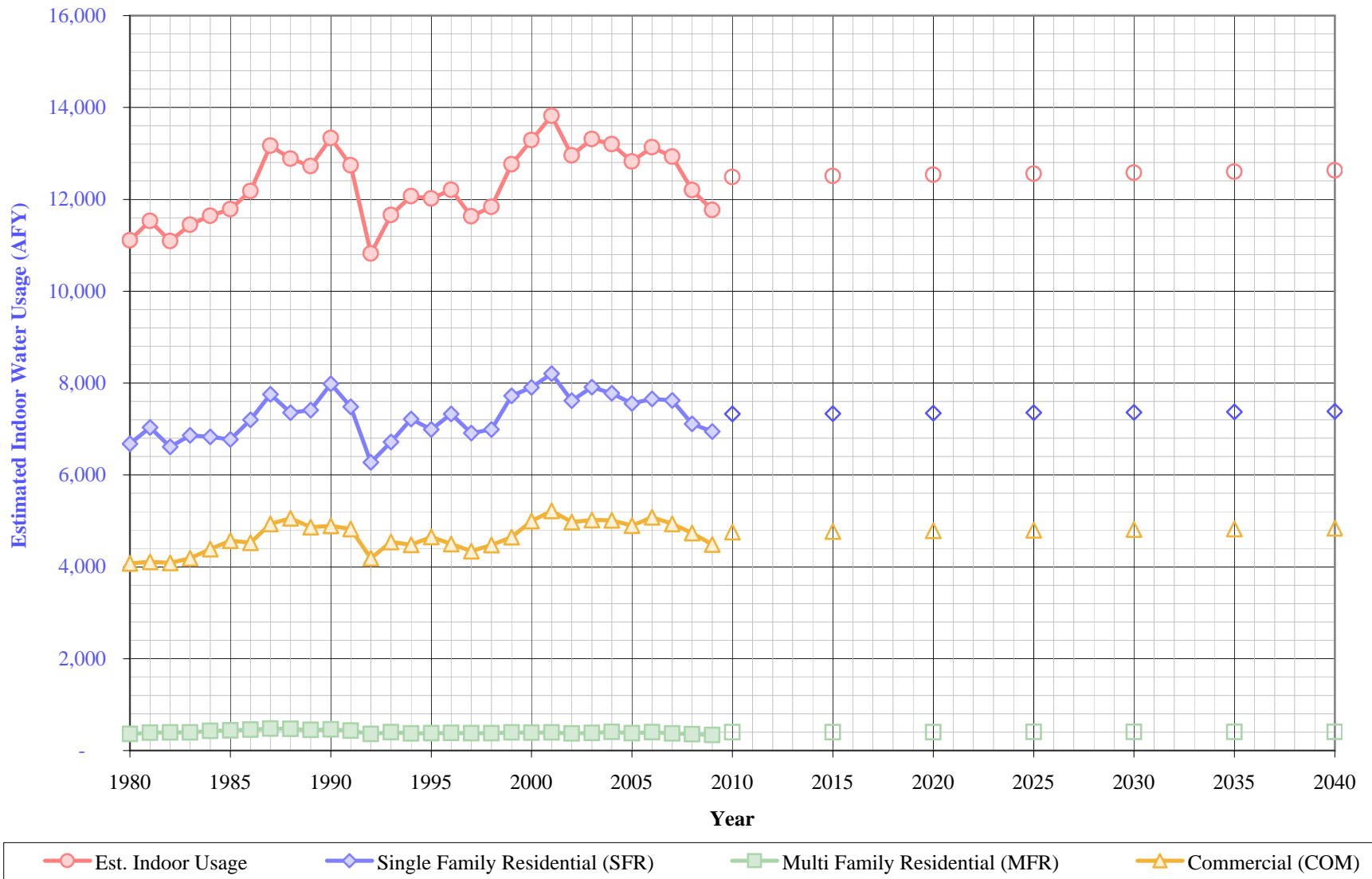
Per Capita Water Demand Calculation

Year	All Users			Residential Only		
	Usage (AFY)	Usage (MGY)	Gallons Per Capita Per Day	Usage (AFY)	Usage (MGY)	Gallons Per Capita Per Day
1995	20,635	6,724	124.4	9,337	3,042	56.3
1996	21,274	6,932	128.2	9,628	3,137	58.0
1997	21,603	7,039	130.4	9,834	3,205	59.4
1998	20,925	6,818	126.3	9,248	3,014	55.8
1999	21,921	7,143	132.2	9,575	3,120	57.8
2000	21,892	7,133	131.6	9,794	3,192	58.9
2001	20,639	6,725	124.0	9,581	3,122	57.6
2002	21,664	7,059	129.9	9,940	3,239	59.6
2003	20,534	6,691	122.4	9,887	3,222	58.9
2004	20,686	6,740	122.8	9,849	3,209	58.5
2005	20,101	6,550	119.1	9,505	3,097	56.3
2006	20,405	6,649	120.8	9,557	3,114	56.6
2007	19,897	6,483	118.4	9,607	3,131	57.2
2008	19,051	6,208	113.8	9,195	2,996	54.9
2009	17,668	5,757	106.0	8,583	2,797	51.5
2010	16,592	5,407	98.2	8,163	2,660	48.3
5 Yr. Avg.	18,723	6,101	111	9,021	2,939	54
10 Yr. Avg.	19,724	6,427	118	9,387	3,059	56

Five year average is from years 2006 through 2010

Ten year average is from years 2001 through 2010

East Los Angeles District Estimated Indoor Water Usage



California Water Service Company - East Los Angeles District
Water Supply and Demand Analysis and Projections

Estimated Indoor Water Usage

Year	Single Family Residential (SFR)							Multi Family Residential (MFR)						Commercial (COM)						Est. Indoor Usage AFY
	Metered Single Family Residential Indoor Use (Annualized 90% of January Total)			Indoor Flat Rate Usage (AFY)	Total SFR Indoor Usage			Multi Family Residential January Usage		Multi Family Residential Indoor Use (Annualized 90% of January)				Commercial		Commercial Indoor Use (Annualized 90% of January Total)				
	JAN (CCF)	AFY	AFY/Service		AFY	GPD/Service	%	(CCF)	AFY	GPD/Service	%	(CCF)	AFY	GPD/Service	%	(CCF)	AFY	GPD/Service	%	
1980	269,341	6,678	3.37	0	6,678	303	81%	14,445	358	2,518	85%	164,336	4,074	753	85%	11,110				
1981	283,790	7,036	3.55	0	7,036	318	83%	15,613	387	2,679	89%	165,661	4,107	755	83%	11,531				
1982	266,746	6,614	3.34	0	6,614	298	80%	15,829	392	2,675	88%	164,791	4,086	747	85%	11,092				
1983	276,865	6,864	3.46	0	6,864	309	83%	15,945	395	2,694	86%	168,921	4,188	762	84%	11,448				
1984	275,522	6,831	3.44	0	6,831	307	75%	17,312	429	2,903	85%	176,824	4,384	796	80%	11,644				
1985	273,236	6,774	3.41	0	6,774	304	75%	17,750	440	2,954	85%	184,345	4,571	827	82%	11,785				
1986	290,485	7,202	3.63	0	7,202	323	78%	18,259	453	3,016	88%	182,579	4,527	819	80%	12,182				
1987	312,832	7,756	3.90	0	7,756	347	83%	19,254	477	3,180	93%	198,998	4,934	893	83%	13,167				
1988	296,605	7,354	3.70	0	7,354	329	79%	18,946	470	3,130	92%	204,075	5,060	916	85%	12,883				
1989	298,873	7,410	3.73	0	7,410	332	77%	18,067	448	2,984	86%	196,171	4,864	883	83%	12,722				
1990	322,063	7,985	4.01	0	7,985	357	85%	18,494	459	3,078	91%	197,280	4,891	885	84%	13,335				
1991	301,773	7,482	3.76	0	7,482	333	95%	17,402	431	2,853	101%	194,637	4,826	852	91%	12,739				
1992	253,102	6,275	3.15	0	6,275	278	76%	14,521	360	2,363	81%	168,817	4,186	738	78%	10,821				
1993	270,853	6,715	3.37	0	6,715	298	78%	16,069	398	2,615	89%	183,259	4,544	802	81%	11,657				
1994	291,063	7,216	3.62	0	7,216	320	82%	15,056	373	2,450	87%	180,622	4,478	795	79%	12,068				
1995	281,826	6,987	3.50	0	6,987	310	79%	15,327	380	2,494	85%	187,706	4,654	829	83%	12,021				
1996	295,505	7,327	3.67	0	7,327	325	80%	15,535	385	2,528	87%	181,300	4,495	803	81%	12,207				
1997	278,775	6,912	3.46	0	6,912	307	74%	15,292	379	2,489	85%	175,041	4,340	778	78%	11,631				
1998	281,868	6,988	3.50	0	6,988	310	79%	15,138	375	2,464	87%	180,463	4,474	802	83%	11,838				
1999	311,567	7,725	3.86	0	7,725	343	85%	15,824	392	2,575	88%	187,470	4,648	834	83%	12,765				
2000	318,778	7,904	3.95	0	7,904	349	85%	15,742	390	2,562	88%	201,563	4,997	897	85%	13,291				
2001	331,057	8,208	4.10	0	8,208	362	90%	15,827	392	2,576	92%	210,500	5,219	936	89%	13,819				
2002	307,249	7,618	3.81	0	7,618	336	80%	14,939	370	2,431	87%	200,547	4,972	893	84%	12,960				
2003	319,038	7,910	3.95	0	7,910	348	84%	15,506	384	2,524	87%	202,361	5,017	898	85%	13,312				
2004	313,682	7,777	3.88	0	7,777	342	83%	16,452	408	2,678	92%	202,272	5,015	898	83%	13,200				
2005	304,663	7,554	3.77	0	7,554	331	83%	15,127	375	2,462	87%	197,564	4,898	876	85%	12,827				
2006	308,694	7,654	3.82	0	7,654	335	84%	16,186	401	2,634	94%	204,898	5,080	911	86%	13,135				
2007	307,444	7,623	3.80	0	7,623	334	83%	14,944	371	2,450	87%	199,164	4,938	885	85%	12,931				
2008	286,844	7,112	3.54	0	7,112	312	81%	14,396	357	2,343	90%	190,983	4,735	841	83%	12,204				
2009	280,091	6,944	3.46	0	6,944	307	85%	13,550	336	2,222	89%	180,985	4,487	789	84%	11,768				
2010	---	---	---	---	7,327	324	84%	---	401	2,651	89%	---	4,758	836	85%	12,486				
2015	---	---	---	---	7,336	324	84%	---	402	2,651	89%	---	4,772	836	85%	12,509				
2020	---	---	---	---	7,346	324	84%	---	402	2,651	89%	---	4,785	836	85%	12,533				
2025	---	---	---	---	7,355	324	84%	---	403	2,651	89%	---	4,799	836	85%	12,557				
2030	---	---	---	---	7,364	324	84%	---	404	2,651	89%	---	4,813	836	85%	12,581				
2035	---	---	---	---	7,373	324	84%	---	404	2,651	89%	---	4,827	836	85%	12,605				
2040	---	---	---	---	7,383	324	84%	---	405	2,651	89%	---	4,841	836	85%	12,629				

California Water Service Company - East Los Angeles District

Water Supply and Demand Analysis and Projections

Comparison of Projected Demand and Conservation Savings Between SBx7-7 Compliance Targets and Actual Proposed Programs

Year	SBx7-7 Compliance Target (gpcd)	Anticipated GPCD with Proposed Programs*	Estimated Population	Undadjusted Baseline Demand (AFY)	SBx7-7 Compliance Target Demand (AFY)	Anticipated Demand with Proposed Programs (AFY)	Compliance Target Savings Requirement (AFY)	Savings Due to Proposed Programs (AFY)	Recycled Water Projection (AFY)
2005-2009 Average	116	116	149,934	19,424	19,424	19,424	0	0	-
2010	116	116	150,890	19,548	19,548	19,548	0	0	0
2011	115	115	151,020	19,565	19,408	19,454	158	111	0
2012	114	114	151,140	19,581	19,265	19,300	315	281	0
2013	113	113	151,260	19,596	19,123	19,146	473	450	100
2014	112	112	151,390	19,613	18,981	18,993	632	620	300
2015	111	111	151,510	19,629	18,838	18,838	790	790	500
2016	111	111	151,640	19,645	18,854	18,854	791	791	500
2017	111	111	151,760	19,661	18,869	18,869	792	792	500
2018	111	111	151,880	19,677	18,884	18,884	792	792	500
2019	111	111	152,010	19,693	18,900	18,900	793	793	500
2020	111	111	152,130	19,709	18,915	18,915	794	794	500
2021	111	111	152,260	19,726	18,931	18,931	794	794	500
2022	111	111	152,380	19,741	18,946	18,946	795	795	500
2023	111	111	152,510	19,758	18,962	18,962	796	796	500
2024	111	111	152,630	19,774	18,977	18,977	796	796	500
2025	111	111	152,760	19,791	18,994	18,994	797	797	500
2026	111	111	152,880	19,806	19,008	19,008	798	798	500
2027	111	111	153,010	19,823	19,025	19,025	798	798	500
2028	111	111	153,130	19,838	19,040	19,040	799	799	500
2029	111	111	153,250	19,854	19,054	19,054	800	800	500
2030	111	111	153,380	19,871	19,071	19,071	800	800	500
2031	111	111	153,500	19,886	19,086	19,086	801	801	500
2032	111	111	153,630	19,903	19,102	19,102	801	801	500
2033	111	111	153,760	19,920	19,118	19,118	802	802	500
2034	111	111	153,880	19,936	19,133	19,133	803	803	500
2035	111	111	154,010	19,952	19,149	19,149	803	803	500
2036	111	111	154,130	19,968	19,164	19,164	804	804	500
2037	111	111	154,260	19,985	19,180	19,180	805	805	500
2038	111	111	154,380	20,000	19,195	19,195	805	805	500
2039	111	111	154,510	20,017	19,211	19,211	806	806	500
2040	111	111	154,630	20,033	19,226	19,226	807	807	500

*Note: The district is projected to achieve its district-specific 2015 and 2020 SBx7-7 compliance target in 2015 through a combination of passive and active savings. For the purpose of this analysis it is assumed that GPCD will remain flat from 2015 through 2040.