

**Water Resources Planning Department**

**Water Supply / Demand Analysis and Projections**  
**for the**  
**Dixon District**

**2010**

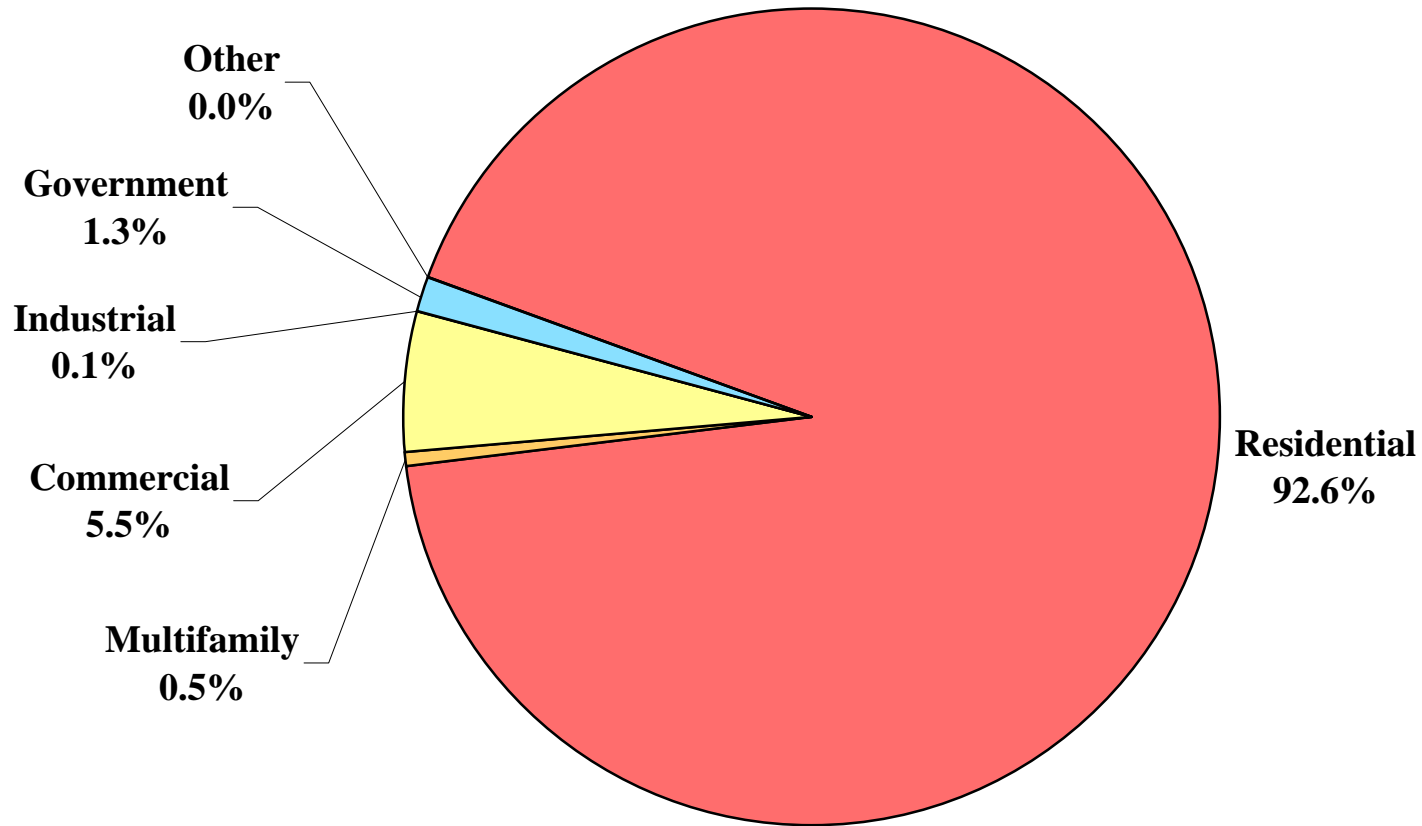


## Table of Contents for Worksheets

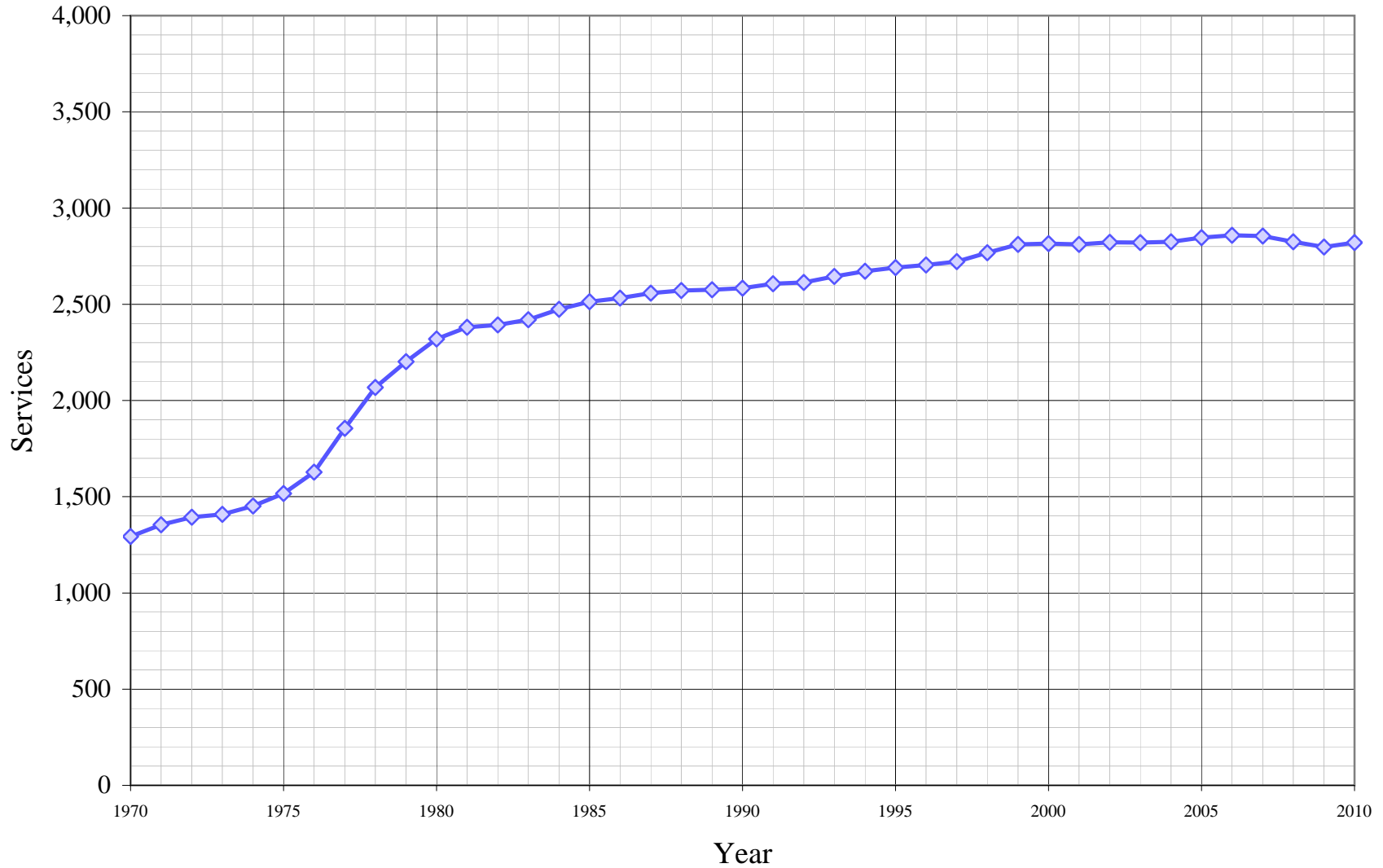
Worksheet	Title
1	Annual Services
2	Service Growth Percentage
3	District Sales (ccf)
4	District Sales (AF)
5	Demand per Service (Gallons/Service/Year)
6	Demand per Service (Gallons per Day)
7	Percentage Change in Annual Demand
8	Percentage of Total Sales
9	Percentage of Total Demand
10	Demand Scenario 1 (Low Demand Projection)
11	Demand Scenario 2 (Average Demand Projection)
12	Demand Scenario 3 (High Demand Projection)
13	Demand Scenario 4 (Alternate Service Projection)
14	Not Used
15	Actual & Projected Annual Average Services
16	Actual & Projected Demand in Acre-Feet
17	Projected Annual Supply by Source
18	Historical and Projected Average Day, Maximum Day, and Peak Demands
19	Population as of the 2000 Average Annual Services
20	Temperature & Rainfall History
21	Groundwater Facilities (if available)
22	Per Capita Water Demand Calculation
23	Indoor/Outdoor Water Usage
24	SB-7 Compliance Demand Worksheet

# Dixon District

## Distribution of Services (2010)



# Dixon District Historical Services



**California Water Service Company - Dixon District**  
**Water Supply and Demand Analysis and Projections**  
**Annual Services**

Year	Residential	Multi-Residential	Multi-Res. Units	Commercial	Industrial	Government	Other	Total	Annual Change
1970	1,160	0	0	110	4	19	0	1,293	
1971	1,219	0	0	112	4	19	0	1,354	61
1972	1,260	0	0	110	4	19	0	1,393	39
1973	1,271	0	0	113	4	19	1	1,408	15
1974	1,312	1	0	113	5	19	1	1,451	43
1975	1,380	1	0	113	4	17	1	1,516	65
1976	1,489	1	0	116	3	17	2	1,628	112
1977	1,707	2	0	121	5	18	2	1,855	227
1978	1,922	3	0	119	5	18	1	2,068	213
1979	2,052	3	0	123	5	19	0	2,202	134
1980	2,156	3	92	134	4	19	3	2,319	117
1981	2,207	8	100	138	4	22	1	2,380	61
1982	2,216	11	115	138	4	23	1	2,393	13
1983	2,241	11	197	140	4	23	1	2,420	27
1984	2,292	13	217	140	4	24	1	2,474	54
1985	2,329	14	230	139	4	25	2	2,513	39
1986	2,345	16	259	142	3	25	1	2,532	19
1987	2,370	16	259	142	4	25	1	2,558	26
1988	2,386	16	259	142	4	24	0	2,572	14
1989	2,391	16	262	141	4	24	0	2,576	4
1990	2,394	17	263	142	4	26	0	2,583	7
1991	2,420	17	263	139	4	26	0	2,606	23
1992	2,429	17	263	138	4	26	0	2,614	8
1993	2,459	17	264	138	4	26	0	2,644	30
1994	2,486	17	263	137	4	27	0	2,671	27
1995	2,505	17	260	137	4	27	0	2,690	19
1996	2,519	17	264	136	4	28	0	2,704	14
1997	2,539	17	266	135	4	27	0	2,722	18
1998	2,587	17	263	136	3	25	0	2,768	46
1999	2,628	17	263	138	3	25	0	2,811	43
2000	2,635	17	263	136	4	23	0	2,815	4
2001	2,634	17	262	134	4	22	0	2,812	-3
2002	2,640	17	263	136	5	24	0	2,822	10
2003	2,637	17	267	136	5	25	0	2,820	-1
2004	2,636	17	281	139	5	24	3	2,824	4
2005	2,657	17	280	141	4	24	3	2,846	22
2006	2,666	17	280	143	4	25	4	2,859	13
2007	2,653	16	252	152	4	25	4	2,854	-5
2008	2,609	20	243	157	4	31	3	2,824	-30
2009	2,582	21	234	154	3	36	1	2,797	-27
2010	2,611	15	156	156	3	36	0	2,821	24
5 Yr Avg.	2,633	18	258	149	4	28	3	2,836	-5
10 Yr Avg.	2,635	18	263	143	4	26	2	2,827	-1
15 Yr. Avg.	2,609	17	263	141	4	26	1	2,798	8

Five year average = 2005 through 2009.

Ten year average = 2000 through 2009.

Fifteen year average = 1995 to 2009.

**California Water Service Company - Dixon District**  
**Water Supply and Demand Analysis and Projections**  
**Service Growth Percentage**

Worksheet 2

Year	Multi-Res.							Total
	Residential	Multifamily	Units	Commercial	Industrial	Government	Other	
1981	2.37%	166.67%	8.70%	2.99%	0.00%	15.79%	-66.67%	2.63%
1982	0.41%	37.50%	15.00%	0.00%	0.00%	4.55%	0.00%	0.55%
1983	1.13%	0.00%	71.30%	1.45%	0.00%	0.00%	0.00%	1.13%
1984	2.28%	18.18%	10.15%	0.00%	0.00%	4.35%	0.00%	2.23%
1985	1.61%	7.69%	5.99%	-0.71%	0.00%	4.17%	100.00%	1.58%
1986	0.69%	14.29%	12.61%	2.16%	-25.00%	0.00%	-50.00%	0.76%
1987	1.07%	0.00%	0.00%	0.00%	33.33%	0.00%	0.00%	1.03%
1988	0.68%	0.00%	0.00%	0.00%	0.00%	-4.00%	-100.00%	0.55%
1989	0.21%	0.00%	1.16%	-0.70%	0.00%	0.00%	0.00%	0.16%
1990	0.13%	6.25%	0.38%	0.71%	0.00%	8.33%	0.00%	0.27%
1991	1.09%	0.00%	0.00%	-2.11%	0.00%	0.00%	0.00%	0.89%
1992	0.37%	0.00%	0.00%	-0.72%	0.00%	0.00%	0.00%	0.31%
1993	1.24%	0.00%	0.38%	0.00%	0.00%	0.00%	0.00%	1.15%
1994	1.10%	0.00%	-0.38%	-0.72%	0.00%	3.85%	0.00%	1.02%
1995	0.76%	0.00%	-1.14%	0.00%	0.00%	0.00%	0.00%	0.71%
1996	0.56%	0.00%	1.54%	-0.73%	0.00%	3.70%	0.00%	0.52%
1997	0.79%	0.00%	0.76%	-0.74%	0.00%	-3.57%	0.00%	0.67%
1998	1.89%	0.00%	-1.13%	0.74%	-25.00%	-7.41%	0.00%	1.69%
1999	1.58%	0.00%	0.00%	1.47%	0.00%	0.00%	0.00%	1.55%
2000	0.28%	0.00%	0.00%	-1.75%	33.33%	-8.00%	0.00%	0.14%
2001	-0.05%	0.00%	-0.38%	-0.86%	0.00%	-2.90%	0.00%	-0.11%
2002	0.23%	0.00%	0.38%	1.05%	25.00%	5.60%	0.00%	0.35%
2003	-0.12%	0.00%	1.62%	0.37%	0.00%	6.01%	0.00%	-0.04%
2004	-0.04%	0.00%	5.19%	1.96%	0.00%	-3.33%	0.00%	0.14%
2005	0.79%	0.00%	-0.40%	1.44%	-20.00%	-0.69%	0.00%	0.77%
2006	0.34%	0.00%	0.00%	1.42%	0.00%	4.17%	33.33%	0.46%
2007	-0.49%	-5.88%	-10.00%	6.29%	0.00%	0.00%	0.00%	-0.17%
2008	-1.65%	25.00%	-3.57%	3.29%	0.00%	24.00%	-25.00%	-1.04%
2009	-1.04%	5.00%	-3.70%	-1.91%	-25.00%	16.13%	-66.67%	-0.96%
2010	1.12%	-28.57%		1.30%	0.00%	0.00%	0.00%	0.86%
5 Yr Avg.	-0.41%	4.82%	-3.53%	2.11%	-9.00%	8.72%	-11.67%	-0.19%
10 Yr Avg.	-0.18%	2.41%	-1.09%	1.13%	1.33%	4.10%	-5.83%	-0.05%
15 Yr Avg.	0.26%	1.61%	-0.72%	0.80%	-0.78%	2.25%	-3.89%	0.31%
20 Yr Avg.	0.39%	1.52%	-0.52%	0.46%	-0.58%	2.29%	-2.92%	0.42%

Five year average = 2005 through 2009.

Ten year average = 2000 through 2009.

Fifteen year average = 1995 to 2009.

**California Water Service Company - Dixon District**  
**Water Supply and Demand Analysis and Projections**  
**Sales (ccf)**

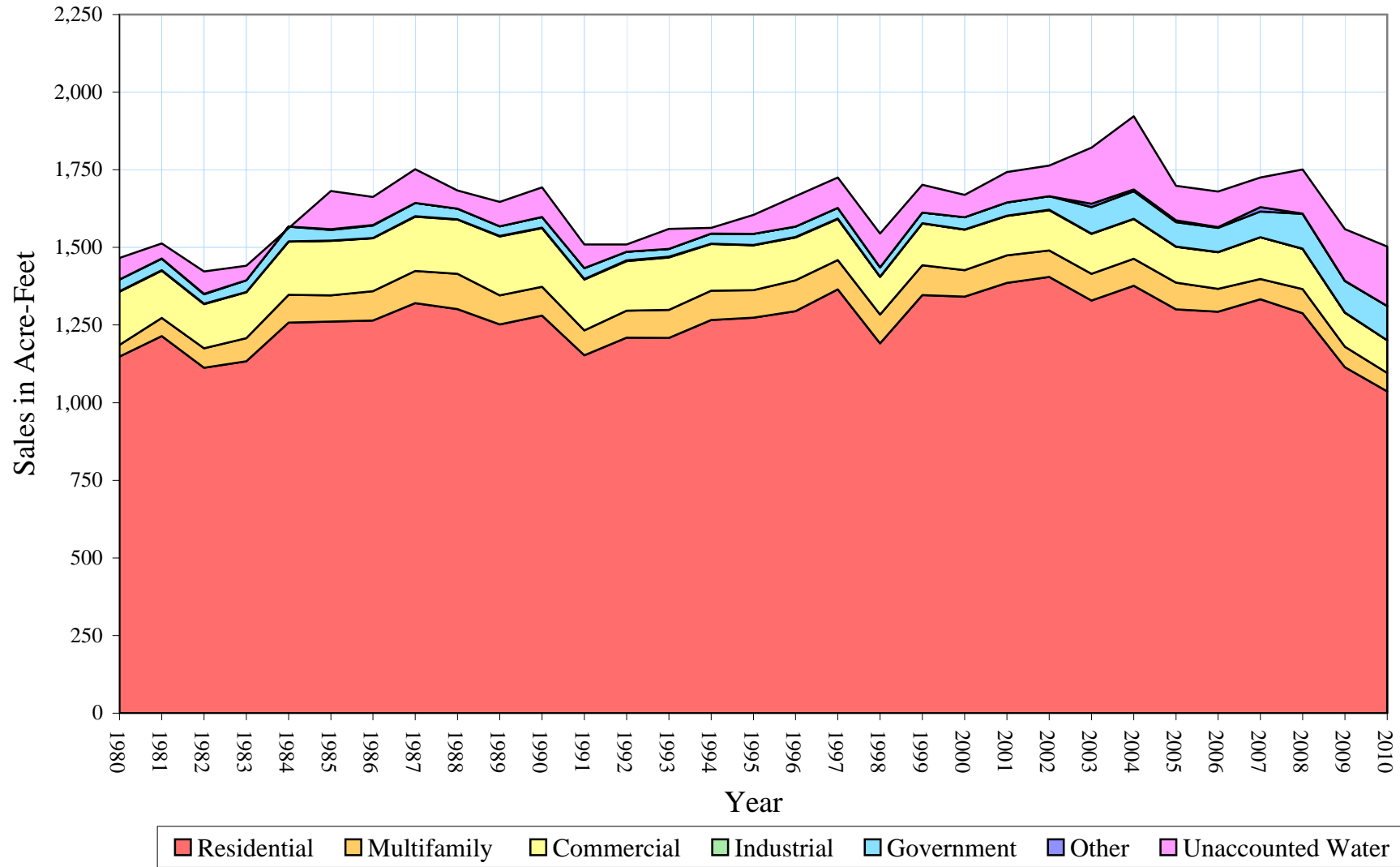
Worksheet 3

Year	Residential	Multifamily	Commercial	Industrial	Government	Other	Unaccounted Water	Total(ccf) Sales	Total(ccf) Demand	Total(kgal) Demand
1980	500,311	16,384	74,645	797	16,147	198	30,280	608,482	638,762	477,827
1981	528,888	25,431	66,579	764	15,725	399	21,354	637,786	659,140	493,071
1982	484,452	27,563	61,663	680	13,416	478	31,233	588,252	619,485	463,407
1983	493,573	32,606	64,478	399	16,119	106	20,510	607,281	627,791	469,620
1984	547,798	39,018	74,851	236	20,639	184	-2,264	682,726	680,462	509,021
1985	549,306	36,845	76,431	424	15,082	1,096	53,428	679,184	732,612	548,032
1986	550,687	41,258	74,165	431	17,406	791	39,324	684,738	724,062	541,636
1987	575,245	45,133	76,232	586	18,441	226	47,297	715,863	763,160	570,883
1988	566,817	49,535	76,018	587	14,974	0	25,283	707,931	733,214	548,482
1989	545,372	40,951	82,412	631	13,713	0	33,979	683,079	717,058	536,397
1990	557,610	40,720	82,264	773	14,658	0	41,553	696,025	737,578	551,747
1991	501,965	34,934	71,487	728	15,144	0	33,383	624,258	657,641	491,950
1992	526,907	37,640	69,781	1,135	11,923	0	10,321	647,386	657,707	491,999
1993	526,449	39,280	73,688	1,057	10,940	0	27,983	651,414	679,397	508,224
1994	551,699	40,973	65,484	495	14,041	0	7,992	672,692	680,684	509,187
1995	554,712	38,562	63,247	204	15,630	0	26,785	672,355	699,140	522,993
1996	564,002	43,451	59,996	704	14,377	0	42,746	682,530	725,276	542,544
1997	594,432	41,323	57,415	629	14,991	0	42,612	708,790	751,402	562,088
1998	518,730	40,557	52,722	308	13,219	0	47,333	625,536	672,869	503,341
1999	586,622	41,795	58,631	170	15,014	0	39,191	702,232	741,423	554,623
2000	584,423	37,221	56,766	348	16,947	0	31,307	695,705	727,012	543,843
2001	603,700	38,606	55,175	523	18,610	0	42,671	716,614	759,285	567,985
2002	611,937	37,216	56,603	439	19,143	0	42,746	725,338	768,084	574,567
2003	579,061	37,210	56,274	316	37,100	4,809	78,522	714,770	793,292	593,424
2004	599,590	38,000	55,599	438	38,486	2,428	102,788	734,541	837,329	626,366
2005	566,606	37,582	50,223	168	34,213	2,426	48,534	691,218	739,752	553,373
2006	563,229	31,925	51,483	270	33,870	1,154	49,887	681,931	731,818	547,438
2007	580,642	28,492	58,484	196	36,116	5,855	41,834	709,785	751,619	562,250
2008	561,093	33,877	56,479	193	48,828	408	61,717	700,878	762,595	570,461
2009	485,209	28,802	47,875	139	44,261	220	72,360	606,506	678,866	507,827
2010	451,469	25,752	45,873	95	47,897	24	83,656	571,110	654,766	489,799
5 Yr. Avg.	551,356	32,136	52,909	193	39,458	2,013	54,866	678,064	732,930	548,270
10 Yr. Avg.	573,549	34,893	54,496	303	32,757	1,730	57,237	697,729	754,965	564,753

Five year average = 2005 through 2009.

Ten year average = 2000 through 2009.

## Dixon District Historical Sales





**California Water Service Company - Dixon District**  
**Water Supply and Demand Analysis and Projections**  
**Sales (AF)**

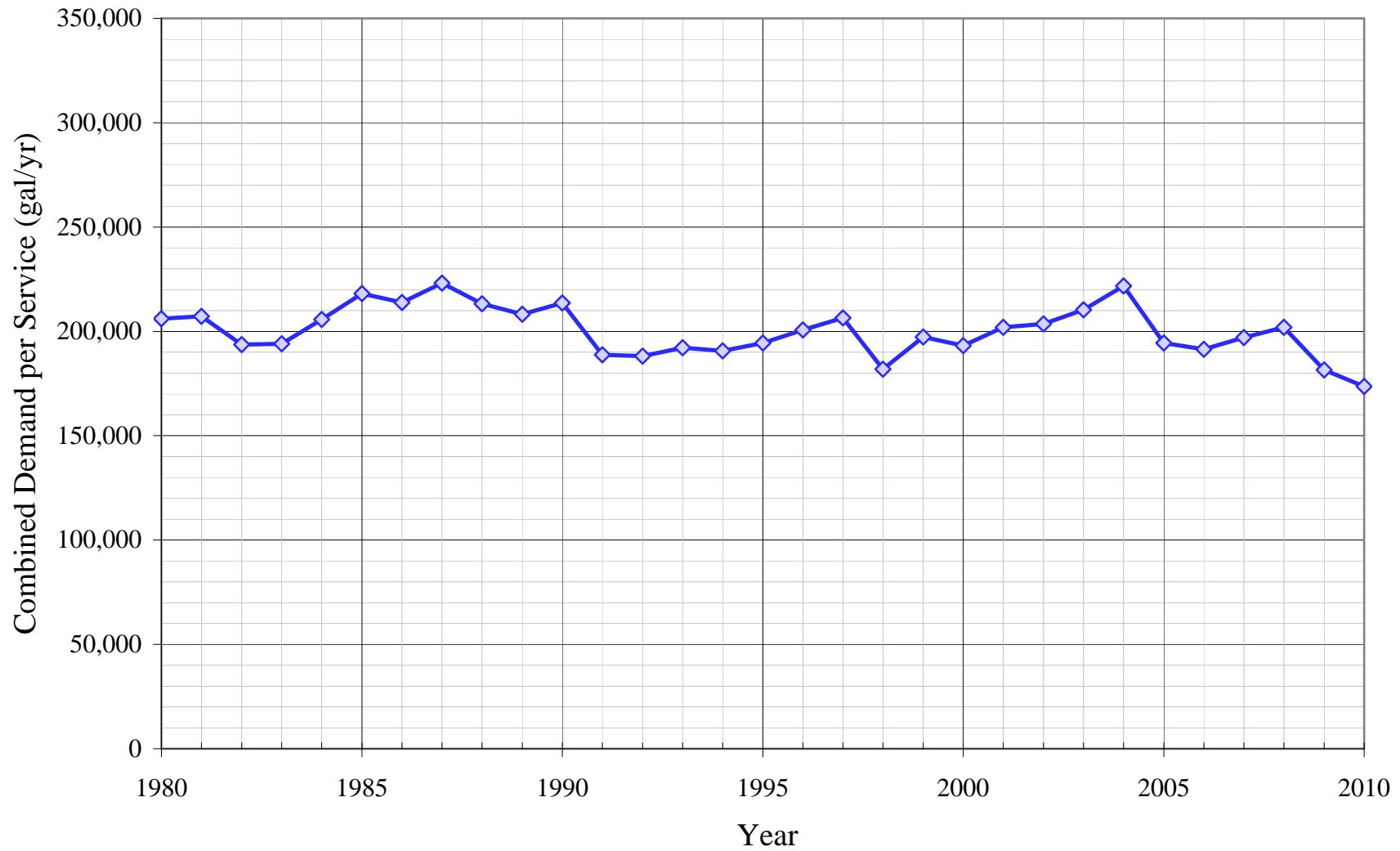
Worksheet 4

Year	Residential	Multifamily	Commercial	Industrial	Government	Other	Unaccounted Water	Total(AF) Sales	Total(AF) Demand	Total(Mgal) Demand
1980	1,149	38	171	2	37	0	70	1,397	1,466	478
1981	1,214	58	153	2	36	1	49	1,464	1,513	493
1982	1,112	63	142	2	31	1	72	1,350	1,422	463
1983	1,133	75	148	1	37	0	47	1,394	1,441	470
1984	1,258	90	172	1	47	0	-5	1,567	1,562	509
1985	1,261	85	175	1	35	3	123	1,559	1,682	548
1986	1,264	95	170	1	40	2	90	1,572	1,662	542
1987	1,321	104	175	1	42	1	109	1,643	1,752	571
1988	1,301	114	175	1	34	0	58	1,625	1,683	548
1989	1,252	94	189	1	31	0	78	1,568	1,646	536
1990	1,280	93	189	2	34	0	95	1,598	1,693	552
1991	1,152	80	164	2	35	0	77	1,433	1,510	492
1992	1,210	86	160	3	27	0	24	1,486	1,510	492
1993	1,209	90	169	2	25	0	64	1,495	1,560	508
1994	1,267	94	150	1	32	0	18	1,544	1,563	509
1995	1,273	89	145	0	36	0	61	1,544	1,605	523
1996	1,295	100	138	2	33	0	98	1,567	1,665	543
1997	1,365	95	132	1	34	0	98	1,627	1,725	562
1998	1,191	93	121	1	30	0	109	1,436	1,545	503
1999	1,347	96	135	0	34	0	90	1,612	1,702	555
2000	1,342	85	130	1	39	0	72	1,597	1,669	544
2001	1,386	89	127	1	43	0	98	1,645	1,743	568
2002	1,405	85	130	1	44	0	98	1,665	1,763	575
2003	1,329	85	129	1	85	11	180	1,641	1,821	593
2004	1,376	87	128	1	88	6	236	1,686	1,922	626
2005	1,301	86	115	0	79	6	111	1,587	1,698	553
2006	1,293	73	118	1	78	3	115	1,565	1,680	547
2007	1,333	65	134	0	83	13	96	1,629	1,725	562
2008	1,288	78	130	0	112	1	142	1,609	1,751	570
2009	1,114	66	110	0	102	1	166	1,392	1,558	508
2010	1,036	59	105	0	110	0	192	1,311	1,503	490
5 Yr. Avg.	1,266	74	121	0	91	5	126	1,557	1,683	548
10 Yr. Avg.	1,317	80	125	1	75	4	131	1,602	1,733	565

Five year average = 2005 through 2009.

Ten year average = 2000 through 2009.

# Dixon District Historical Demand Per Service



**California Water Service Company - Dixon District**  
**Water Supply and Demand Analysis and Projections**  
**Demand per Service (Gallons per Year)**

Worksheet 5

Year	Multi-Residential			Commercial	Industrial	Government	Total Other	Unaccounted/ Total Services	Combined Demand/Service
	Residential	(service)	(unit)						
1980	173,589	4,085,361	133,218	416,704	149,049	635,726	49,371	9,767	206,049
1981	179,264	2,377,964	190,237	360,903	142,878	534,687	298,473	6,712	207,173
1982	163,536	1,874,414	179,292	334,255	127,169	436,342	357,569	9,763	193,651
1983	164,756	2,217,362	123,812	344,521	74,618	524,254	79,294	6,340	194,058
1984	178,788	2,245,192	134,505	399,946	44,135	643,294	137,642	-685	205,748
1985	176,432	1,968,713	119,835	411,326	79,294	451,285	409,932	15,904	218,079
1986	175,668	1,928,946	119,163	390,699	107,470	520,824	591,709	11,618	213,916
1987	181,567	2,110,114	130,355	401,588	109,590	551,793	169,060	13,831	223,176
1988	177,707	2,315,922	143,069	400,461	109,777	466,722	-	7,353	213,251
1989	170,626	1,914,592	116,922	437,223	118,005	427,418	-	9,867	208,229
1990	174,236	1,791,805	115,820	433,364	144,561	421,729	-	12,034	213,607
1991	155,164	1,537,203	99,363	384,719	136,145	435,712	-	9,583	188,776
1992	162,270	1,656,275	107,060	378,260	212,260	343,039	-	2,954	188,217
1993	160,151	1,728,440	111,301	399,438	197,673	314,757	-	7,917	192,218
1994	166,009	1,802,937	116,540	357,558	92,571	389,015	-	2,238	190,635
1995	165,650	1,696,846	110,948	345,343	38,151	433,039	-	7,449	194,421
1996	167,488	1,911,977	123,120	330,001	131,657	384,098	-	11,825	200,645
1997	175,134	1,818,338	116,210	318,144	117,631	415,335	-	11,711	206,498
1998	149,995	1,784,632	115,356	289,991	76,800	395,540	-	12,792	181,843
1999	166,980	1,839,108	118,878	317,819	42,390	449,250	-	10,429	197,305
2000	165,891	1,637,838	105,868	313,194	65,081	551,184	-	8,320	193,200
2001	171,450	1,698,782	110,226	307,058	97,808	623,339	-	11,353	202,004
2002	173,383	1,637,618	105,854	311,720	65,679	607,207	-	11,333	203,633
2003	164,260	1,637,354	104,153	308,772	47,277	1,110,109	-	20,826	210,403
2004	170,148	1,672,116	101,115	299,215	65,529	1,191,291	605,423	27,225	221,781
2005	159,522	1,653,723	100,405	266,450	31,418	1,066,379	604,925	12,757	194,439
2006	158,036	1,404,798	85,291	269,314	50,494	1,013,461	215,813	13,053	191,479
2007	163,720	1,332,094	84,577	287,823	36,655	1,080,666	1,094,961	10,965	197,004
2008	160,861	1,267,088	104,287	269,103	36,094	1,178,254	101,735	16,347	201,987
2009	140,574	1,025,971	92,074	232,552	34,660	919,709	164,571	19,353	181,561
2010	129,346	1,284,256		219,970	23,688	995,262		22,183	173,626
5 Yr. Avg.	156,543	1,336,735	93,327	265,048	37,864	1,051,694	436,401	14,495	193,294
10 Yr. Avg.	162,785	1,496,738	99,385	286,520	53,069	934,160	464,571	15,153	199,749

Five year average is from years 2005 through 2009.

Ten year average is from years 2000 through 2009.

**California Water Service Company - Dixon District**  
**Water Supply and Demand Analysis and Projections**  
**Demand per Service (Gallons per Day)**

Year	Multi-Residential			Commercial	Industrial	Government	Total Other	Unaccounted/ Total Services	Combined Demand/Serv
	Residential	(service)	(unit)						
1980	476	11,193	365	1,142	408	1,742	135	27	565
1981	491	6,515	521	989	391	1,465	818	18	568
1982	448	5,135	491	916	348	1,195	980	27	531
1983	451	6,075	339	944	204	1,436	217	17	532
1984	490	6,151	369	1,096	121	1,762	377	-2	564
1985	483	5,394	328	1,127	217	1,236	1,123	44	597
1986	481	5,285	326	1,070	294	1,427	1,621	32	586
1987	497	5,781	357	1,100	300	1,512	463	38	611
1988	487	6,345	392	1,097	301	1,279	-	20	584
1989	467	5,245	320	1,198	323	1,171	-	27	570
1990	477	4,909	317	1,187	396	1,155	-	33	585
1991	425	4,212	272	1,054	373	1,194	-	26	517
1992	445	4,538	293	1,036	582	940	-	8	516
1993	439	4,735	305	1,094	542	862	-	22	527
1994	455	4,940	319	980	254	1,066	-	6	522
1995	454	4,649	304	946	105	1,186	-	20	533
1996	459	5,238	337	904	361	1,052	-	32	550
1997	480	4,982	318	872	322	1,138	-	32	566
1998	411	4,889	316	794	210	1,084	-	35	498
1999	457	5,039	326	871	116	1,231	-	29	541
2000	454	4,487	290	858	178	1,510	-	23	529
2001	470	4,654	302	841	268	1,708	-	31	553
2002	475	4,487	290	854	180	1,664	-	31	558
2003	450	4,486	285	846	130	3,041	-	57	576
2004	466	4,581	277	820	180	3,264	1,659	75	608
2005	437	4,531	275	730	86	2,922	1,657	35	533
2006	433	3,849	234	738	138	2,777	591	36	525
2007	449	3,650	232	789	100	2,961	3,000	30	540
2008	441	3,471	286	737	99	3,228	279	45	553
2009	385	2,811	252	637	95	2,520	451	53	497
2010	354	3,519	0	603	65	2,727	0	61	476
5 Yr. Avg.	429	3,662	256	726	104	2,881	1,196	40	530
10 Yr. Avg.	446	4,101	272	785	145	2,559	1,273	42	547

Five year average is from years 2005 through 2009.

Ten year average is from years 2000 through 2009.

**California Water Service Company - Dixon District**  
**Water Supply and Demand Analysis and Projections**  
**Percentage Change in Annual Demand**

Worksheet 7

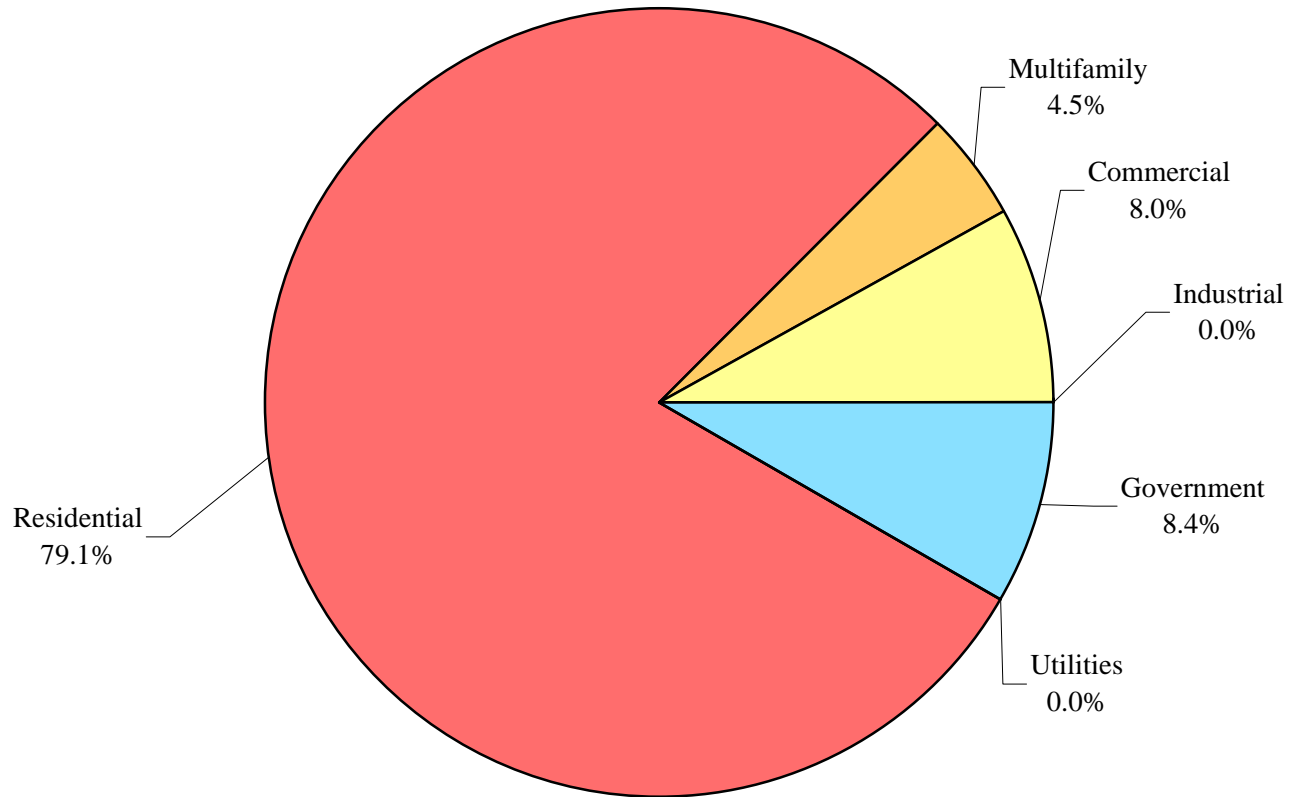
Year	Residential	Multi-Residential	Commercial	Industrial	Government	Other	Unaccounted Water	Total
1981	5.71%	55.22%	-10.81%	-4.14%	-2.61%	101.52%	-29.48%	3.19%
1982	-8.40%	8.38%	-7.38%	-10.99%	-14.68%	19.80%	46.26%	-6.02%
1983	1.88%	18.30%	4.57%	-41.32%	20.15%	-77.82%	-34.33%	1.34%
1984	10.99%	19.67%	16.09%	-40.85%	28.04%	73.58%	-111.04%	8.39%
1985	0.28%	-5.57%	2.11%	79.66%	-26.92%	495.65%	-2459.96%	7.66%
1986	0.25%	11.98%	-2.96%	1.65%	15.41%	-27.83%	-26.40%	-1.17%
1987	4.46%	9.39%	2.79%	35.96%	5.95%	-71.43%	20.27%	5.40%
1988	-1.47%	9.75%	-0.28%	0.17%	-18.80%	-100.00%	-46.54%	-3.92%
1989	-3.78%	-17.33%	8.41%	7.50%	-8.42%	-	34.40%	-2.20%
1990	2.24%	-0.56%	-0.18%	22.50%	6.89%	-	22.29%	2.86%
1991	-9.98%	-14.21%	-13.10%	-5.82%	3.32%	-	-19.66%	-10.84%
1992	4.97%	7.75%	-2.39%	55.91%	-21.27%	-	-69.08%	0.01%
1993	-0.09%	4.36%	5.60%	-6.87%	-8.24%	-	171.12%	3.30%
1994	4.80%	4.31%	-11.13%	-53.17%	28.35%	-	-71.44%	0.19%
1995	0.55%	-5.88%	-3.42%	-58.79%	11.32%	-	235.15%	2.71%
1996	1.67%	12.68%	-5.14%	245.10%	-8.02%	-	59.59%	3.74%
1997	5.40%	-4.90%	-4.30%	-10.65%	4.27%	-	-0.31%	3.60%
1998	-12.74%	-1.85%	-8.17%	-51.03%	-11.82%	-	11.08%	-10.45%
1999	13.09%	3.05%	11.21%	-44.81%	13.58%	-	-17.20%	10.19%
2000	-0.37%	-10.94%	-3.18%	104.71%	12.87%	-	-20.12%	-1.94%
2001	3.30%	3.72%	-2.80%	50.29%	9.81%	-	36.30%	4.44%
2002	1.36%	-3.60%	2.59%	-16.06%	2.86%	-	0.18%	1.16%
2003	-5.37%	-0.02%	-0.58%	-28.02%	93.80%	-	83.69%	3.28%
2004	3.55%	2.12%	-1.20%	38.61%	3.74%	-49.51%	30.90%	5.55%
2005	-5.50%	-1.10%	-9.67%	-61.64%	-11.10%	-0.08%	-52.78%	-11.65%
2006	-0.60%	-15.05%	2.51%	60.71%	-1.00%	-52.43%	2.79%	-1.07%
2007	3.09%	-10.75%	13.60%	-27.41%	6.63%	407.37%	-16.14%	2.71%
2008	-3.37%	18.90%	-3.43%	-1.53%	35.20%	-93.03%	47.53%	1.46%
2009	-13.52%	-14.98%	-15.23%	-27.98%	-9.35%	-46.08%	17.24%	-10.98%
2010	-6.95%	-10.59%	-4.18%	-31.65%	8.21%	-89.09%	15.61%	-3.55%
5 Yr. Avg.	-3.98%	-4.60%	-2.44%	-11.57%	4.08%	43.15%	-0.27%	-3.91%
10 Yr. Avg.	-1.74%	-3.17%	-1.74%	9.17%	14.35%	27.71%	12.96%	-0.70%

Five year average is from years 2005 through 2009.

Ten year average is from years 2000 through 2009.

# Dixon District

## Percent of Total Sales per Type of Use (2010)



**California Water Service Company - Dixon District**  
**Water Supply and Demand Analysis and Projections**  
**Percentage of Total Sales**

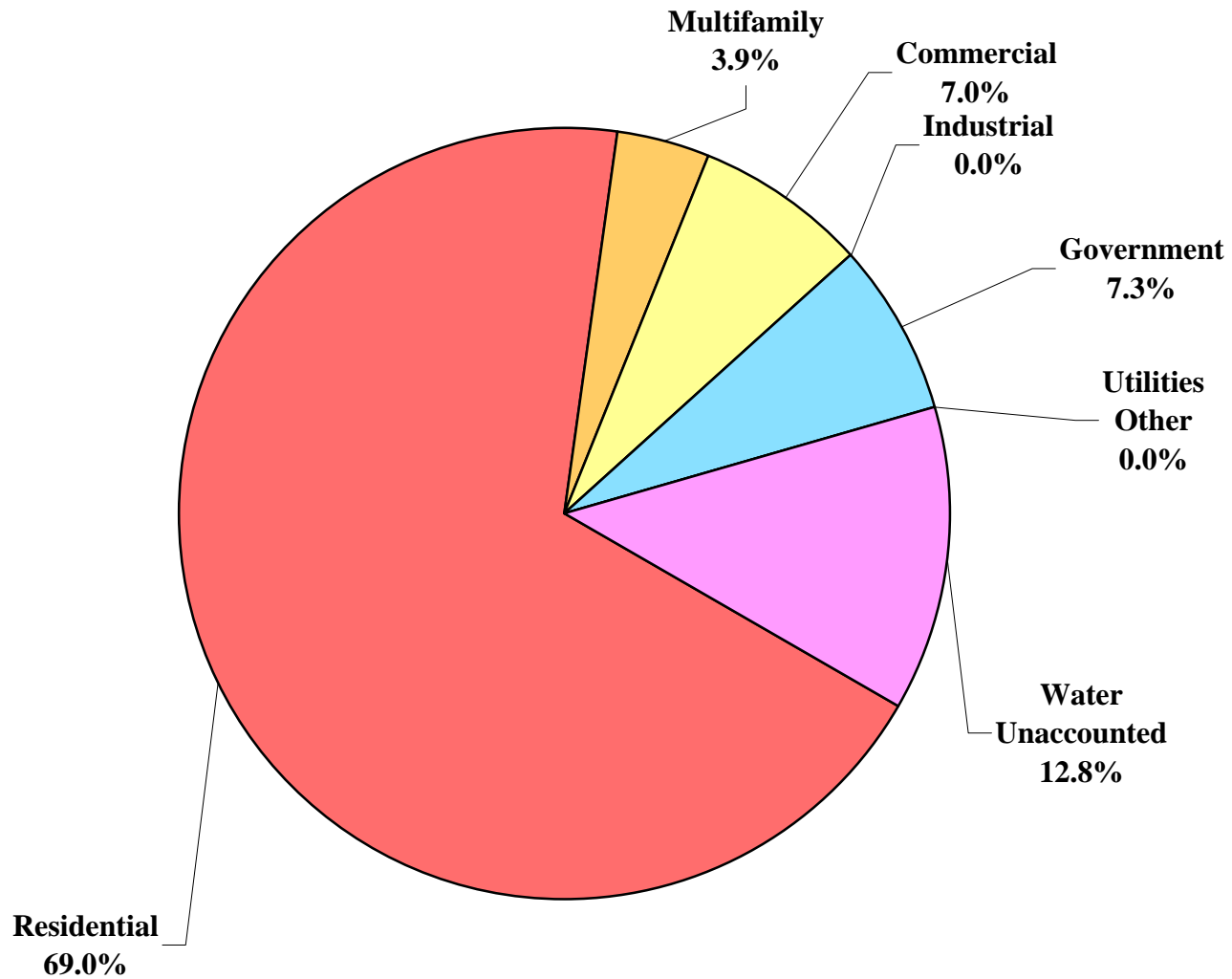
Year	Residential	Multifamily	Commercial	Industrial	Government	Other Utilities	Percent Total
1980	82.22%	2.69%	12.27%	0.13%	2.65%	0.03%	100.00%
1981	82.93%	3.99%	10.44%	0.12%	2.47%	0.06%	100.00%
1982	82.35%	4.69%	10.48%	0.12%	2.28%	0.08%	100.00%
1983	81.28%	5.37%	10.62%	0.07%	2.65%	0.02%	100.00%
1984	80.24%	5.72%	10.96%	0.03%	3.02%	0.03%	100.00%
1985	80.88%	5.42%	11.25%	0.06%	2.22%	0.16%	100.00%
1986	80.42%	6.03%	10.83%	0.06%	2.54%	0.12%	100.00%
1987	80.36%	6.30%	10.65%	0.08%	2.58%	0.03%	100.00%
1988	80.07%	7.00%	10.74%	0.08%	2.12%	0.00%	100.00%
1989	79.84%	6.00%	12.06%	0.09%	2.01%	0.00%	100.00%
1990	80.11%	5.85%	11.82%	0.11%	2.11%	0.00%	100.00%
1991	80.41%	5.60%	11.45%	0.12%	2.43%	0.00%	100.00%
1992	81.39%	5.81%	10.78%	0.18%	1.84%	0.00%	100.00%
1993	80.82%	6.03%	11.31%	0.16%	1.68%	0.00%	100.00%
1994	82.01%	6.09%	9.73%	0.07%	2.09%	0.00%	100.00%
1995	82.50%	5.74%	9.41%	0.03%	2.32%	0.00%	100.00%
1996	82.63%	6.37%	8.79%	0.10%	2.11%	0.00%	100.00%
1997	83.87%	5.83%	8.10%	0.09%	2.12%	0.00%	100.00%
1998	82.93%	6.48%	8.43%	0.05%	2.11%	0.00%	100.00%
1999	83.54%	5.95%	8.35%	0.02%	2.14%	0.00%	100.00%
2000	84.00%	5.35%	8.16%	0.05%	2.44%	0.00%	100.00%
2001	84.24%	5.39%	7.70%	0.07%	2.60%	0.00%	100.00%
2002	84.37%	5.13%	7.80%	0.06%	2.64%	0.00%	100.00%
2003	81.01%	5.21%	7.87%	0.04%	5.19%	0.67%	100.00%
2004	81.63%	5.17%	7.57%	0.06%	5.24%	0.33%	100.00%
2005	81.97%	5.44%	7.27%	0.02%	4.95%	0.35%	100.00%
2006	82.59%	4.68%	7.55%	0.04%	4.97%	0.17%	100.00%
2007	81.81%	4.01%	8.24%	0.03%	5.09%	0.82%	100.00%
2008	80.06%	4.83%	8.06%	0.03%	6.97%	0.06%	100.00%
2009	80.00%	4.75%	7.89%	0.02%	7.30%	0.04%	100.00%
2010	79.05%	4.51%	8.03%	0.02%	8.39%	0.00%	100.00%
5 Yr. Avg.	81.29%	4.74%	7.80%	0.03%	5.85%	0.29%	100.00%
10 Yr. Avg.	82.17%	5.00%	7.81%	0.04%	4.74%	0.24%	100.00%

Five year average is from years 2005 through 2009.

Ten year average is from years 2000 through 2009.

# Dixon District

## Percent of Total Demand per Type of Use (2010)





**California Water Service Company - Dixon District**  
**Water Supply and Demand Analysis and Projections**  
**Percentage of Total Demand**

Year	Residential	Multifamily	Commercial	Industrial	Government	Other Utilities	Unaccounted Water	Percent Total
1980	78.33%	2.56%	11.69%	0.12%	2.53%	0.03%	4.74%	100.00%
1981	80.24%	3.86%	10.10%	0.12%	2.39%	0.06%	3.24%	100.00%
1982	78.20%	4.45%	9.95%	0.11%	2.17%	0.08%	5.04%	100.00%
1983	78.62%	5.19%	10.27%	0.06%	2.57%	0.02%	3.27%	100.00%
1984	80.50%	5.73%	11.00%	0.03%	3.03%	0.03%	-0.33%	100.00%
1985	74.98%	5.03%	10.43%	0.06%	2.06%	0.15%	7.29%	100.00%
1986	76.06%	5.70%	10.24%	0.06%	2.40%	0.11%	5.43%	100.00%
1987	75.38%	5.91%	9.99%	0.08%	2.42%	0.03%	6.20%	100.00%
1988	77.31%	6.76%	10.37%	0.08%	2.04%	0.00%	3.45%	100.00%
1989	76.06%	5.71%	11.49%	0.09%	1.91%	0.00%	4.74%	100.00%
1990	75.60%	5.52%	11.15%	0.10%	1.99%	0.00%	5.63%	100.00%
1991	76.33%	5.31%	10.87%	0.11%	2.30%	0.00%	5.08%	100.00%
1992	80.11%	5.72%	10.61%	0.17%	1.81%	0.00%	1.57%	100.00%
1993	77.49%	5.78%	10.85%	0.16%	1.61%	0.00%	4.12%	100.00%
1994	81.05%	6.02%	9.62%	0.07%	2.06%	0.00%	1.17%	100.00%
1995	79.34%	5.52%	9.05%	0.03%	2.24%	0.00%	3.83%	100.00%
1996	77.76%	5.99%	8.27%	0.10%	1.98%	0.00%	5.89%	100.00%
1997	79.11%	5.50%	7.64%	0.08%	2.00%	0.00%	5.67%	100.00%
1998	77.09%	6.03%	7.84%	0.05%	1.96%	0.00%	7.03%	100.00%
1999	79.12%	5.64%	7.91%	0.02%	2.03%	0.00%	5.29%	100.00%
2000	80.39%	5.12%	7.81%	0.05%	2.33%	0.00%	4.31%	100.00%
2001	79.51%	5.08%	7.27%	0.07%	2.45%	0.00%	5.62%	100.00%
2002	79.67%	4.85%	7.37%	0.06%	2.49%	0.00%	5.57%	100.00%
2003	72.99%	4.69%	7.09%	0.04%	4.68%	0.61%	9.90%	100.00%
2004	71.61%	4.54%	6.64%	0.05%	4.60%	0.29%	12.28%	100.00%
2005	76.59%	5.08%	6.79%	0.02%	4.62%	0.33%	6.56%	100.00%
2006	76.96%	4.36%	7.03%	0.04%	4.63%	0.16%	6.82%	100.00%
2007	77.25%	3.79%	7.78%	0.03%	4.81%	0.78%	5.57%	100.00%
2008	73.58%	4.44%	7.41%	0.03%	6.40%	0.05%	8.09%	100.00%
2009	71.47%	4.24%	7.05%	0.02%	6.52%	0.03%	10.66%	100.00%
2010	68.95%	3.93%	7.01%	0.01%	7.32%	0.00%	12.78%	100.00%
5 Yr. Avg.	75.17%	4.38%	7.21%	0.03%	5.40%	0.27%	7.54%	
10 Yr. Avg.	76.00%	4.62%	7.22%	0.04%	4.35%	0.22%	7.54%	

Five year average is from years 2005 through 2009.

Ten year average is from years 2000 through 2009.

## California Water Service Company - Dixon District

### Water Supply and Demand Analysis and Projections

Worksheet 10

Scenario #1: Based on Maintaining Growth at the  15-Year Average Annual Growth and  Low Demand per Service for each Customer Class.  
 5-Year  Average  High

Summary of Historical Growth Rate from Worksheet 2			
Customer Type	15 Yr Avg. Historical Growth Rate	Individual Growth Rate Selected	Notes
Single Family Residential	0.26%	0.26%	Historical growth rate used
Multi Family Residential	1.61%	1.61%	Historical growth rate used
Commercial	0.80%	0.80%	Historical growth rate used
Industrial	-0.78%	0.31%	Overall growth rate used
Government	2.25%	0.31%	Overall growth rate used
Other	-3.89%	0.31%	Overall growth rate used
Overall	0.31%	0.31%	

Summary of Lowest Demand per Service from Worksheets 5 and 6									
Demand/Serv. Units	Multi-Residential						Total Other	Unaccounted Total Serv.	Combined Demand/Serv.
	Residential	(service)	(unit)	Commercial	Industrial	Government			
Gal/Service/Yr	140,574	1,025,971	92,074	232,552	34,660	314,757	164,571	0	181,561
AF/Service/Yr	0.431	3.149	0.283	0.714	0.106	0.966	0.505	0.000	0.557
Gal/Service/Day	385	2,811	252	637	95	862	451	0	497

**California Water Service Company - Dixon District**  
**Water Supply and Demand Analysis and Projections**

**30-year projection Summary**

Scenario #1: Based on Maintaining Growth at the  15-Year Average Annual Growth and  Low Demand per Service for each Customer Class.  
 5-Year  Average  High

Customer Type	Projected Services 2010	Projected Services 2015	Projected Services 2020	Projected Services 2025	Projected Services 2030	Projected Services 2035	Projected Services 2040	Services projected to be added from 2010 - 2040
Single Family Residential	2,589	2,622	2,655	2,690	2,724	2,759	2,794	206
Multi Family Residential	21	23	25	27	29	32	34	13
Commercial	155	162	168	175	182	190	197	42
Industrial	3	3	3	3	3	3	3	0
Government	36	37	37	38	38	39	40	4
Other	1	1	1	1	1	1	1	0
<b>Total</b>	<b>2,805</b>	<b>2,847</b>	<b>2,890</b>	<b>2,934</b>	<b>2,978</b>	<b>3,024</b>	<b>3,070</b>	<b>265</b>

Customer Type	Projected Demand 2010 (ccf)	Projected Demand 2015 (ccf)	Projected Demand 2020 (ccf)	Projected Demand 2025 (ccf)	Projected Demand 2030 (ccf)	Projected Demand 2035 (ccf)	Projected Demand 2040 (ccf)	Projected demand to be added from 2010 - 2040 (ccf)
Single Family Residential	486,446	492,688	499,010	505,413	511,899	518,468	525,121	38,675
Multi Family Residential	29,265	31,695	34,326	37,176	40,263	43,606	47,227	17,961
Commercial	48,259	50,227	52,276	54,408	56,626	58,936	61,339	13,080
Industrial	139	142	144	146	148	151	153	14
Government	15,195	15,433	15,676	15,922	16,172	16,426	16,683	1,488
Other	221	224	228	231	235	239	242	22
Unaccounted	0	0	0	0	0	0	0	0
<b>Total</b>	<b>579,525</b>	<b>590,409</b>	<b>601,659</b>	<b>613,297</b>	<b>625,343</b>	<b>637,824</b>	<b>650,765</b>	<b>71,240</b>

Customer Type	Projected Demand 2010 (AF)	Projected Demand 2015 (AF)	Projected Demand 2020 (AF)	Projected Demand 2025 (AF)	Projected Demand 2030 (AF)	Projected Demand 2035 (AF)	Projected Demand 2040 (AF)	Projected demand to be added from 2010 - 2040 (AF)
Single Family Residential	1,117	1,131	1,146	1,160	1,175	1,190	1,206	89
Multi Family Residential	67	73	79	85	92	100	108	41
Commercial	111	115	120	125	130	135	141	30
Industrial	0	0	0	0	0	0	0	0
Government	35	35	36	37	37	38	38	3
Other	1	1	1	1	1	1	1	0
Unaccounted	0	0	0	0	0	0	0	0
<b>Total</b>	<b>1,330</b>	<b>1,355</b>	<b>1,381</b>	<b>1,408</b>	<b>1,436</b>	<b>1,464</b>	<b>1,494</b>	<b>164</b>

## California Water Service Company - Dixon District

### Water Supply and Demand Analysis and Projections

Worksheet 10

Scenario #1: Based on Maintaining Growth at the  15-Year Average Annual Growth and  Low Demand per Service for each Customer Class.  
 5-Year  Average  High

#### 2000's Projections

Customer Type	Actual Services 2001	Actual Services 2002	Actual Services 2003	Actual Services 2004	Actual Services 2005	Actual Services 2,006	Actual Services 2,007	Actual Services 2,008	Actual Services 2,009	Projected Services 2010
Resident	2,634	2,640	2,637	2,636	2,657	2,666	2,653	2,609	2,582	2,589
Multi- Residential	17	17	17	17	17	17	16	20	21	21
Commercial	134	136	136	139	141	143	152	157	154	155
Industrial	4	5	5	5	4	4	4	4	3	3
Government	22	24	25	24	24	25	25	31	36	36
Other	0	0	0	3	3	4	4	3	1	1
<b>Total</b>	<b>2,812</b>	<b>2,822</b>	<b>2,820</b>	<b>2,824</b>	<b>2,846</b>	<b>2,859</b>	<b>2,854</b>	<b>2,824</b>	<b>2,797</b>	<b>2,805</b>

Customer Type	Demand 2001(ccf)	Demand 2002(ccf)	Demand 2003(ccf)	Demand 2004(ccf)	Demand 2005(ccf)	Demand 2006(ccf)	Demand 2007(ccf)	Demand 2008(ccf)	Demand 2009(ccf)	Demand 2010(ccf)
Resident	494,979	496,138	495,558	495,370	499,301	500,992	498,549	490,328	485,207	486,446
Multi- Residential	23,316	23,316	23,316	23,316	23,316	23,316	21,944	27,430	28,802	29,265
Commercial	41,787	42,227	42,383	43,212	43,833	44,455	47,253	48,807	47,875	48,259
Industrial	185	232	232	232	185	185	185	185	139	139
Government	9,397	9,923	10,519	10,169	10,098	10,519	10,519	13,044	15,148	15,195
Other	0	0	0	660	660	880	880	660	220	221
Unaccounted	0	0	0	0	0	0	0	0	0	0
<b>Total</b>	<b>569,664</b>	<b>571,835</b>	<b>572,008</b>	<b>572,958</b>	<b>577,394</b>	<b>580,348</b>	<b>579,331</b>	<b>580,455</b>	<b>577,390</b>	<b>579,525</b>

Customer Type	Demand 2001(AF)	Demand 2002(AF)	Demand 2003(AF)	Demand 2004(AF)	Demand 2005(AF)	Demand 2006(AF)	Demand 2007(AF)	Demand 2008(AF)	Demand 2009(AF)	Demand 2010(AF)
Resident	1,136	1,139	1,138	1,137	1,146	1,150	1,145	1,126	1,114	1,117
Multi- Residential	54	54	54	54	54	54	50	63	66	67
Commercial	96	97	97	99	101	102	108	112	110	111
Industrial	0	1	1	1	0	0	0	0	0	0
Government	22	23	24	23	23	24	24	30	35	35
Other	0	0	0	2	2	2	2	2	1	1
Unaccounted	0	0	0	0	0	0	0	0	0	0
<b>Total</b>	<b>1,308</b>	<b>1,313</b>	<b>1,313</b>	<b>1,315</b>	<b>1,326</b>	<b>1,332</b>	<b>1,330</b>	<b>1,333</b>	<b>1,326</b>	<b>1,330</b>

# California Water Service Company - Dixon District

## Water Supply and Demand Analysis and Projections

### 2010's Projections

Scenario #1: Based on Maintaining Growth at the

- 15-Year
- 5-Year

Average Annual Growth and

- Low
- Average
- High

Demand per Service for each Customer Class.

Customer Type	Projected Services 2011	Projected Services 2012	Projected Services 2013	Projected Services 2014	Projected Services 2015	Projected Services 2016	Projected Services 2017	Projected Services 2018	Projected Services 2019	Projected Services 2020
Resident	2,595	2,602	2,608	2,615	2,622	2,629	2,635	2,642	2,649	2,655
Multi- Residential	22	22	22	23	23	23	24	24	25	25
Commercial	156	158	159	160	162	163	164	165	167	168
Industrial	3	3	3	3	3	3	3	3	3	3
Government	36	36	36	37	37	37	37	37	37	37
Other	1	1	1	1	1	1	1	1	1	1
<b>Total</b>	<b>2,814</b>	<b>2,822</b>	<b>2,830</b>	<b>2,839</b>	<b>2,847</b>	<b>2,856</b>	<b>2,864</b>	<b>2,873</b>	<b>2,881</b>	<b>2,890</b>

Customer Type	Demand 2011(ccf)	Demand 2012(ccf)	Demand 2013(ccf)	Demand 2014(ccf)	Demand 2015(ccf)	Demand 2016(ccf)	Demand 2017(ccf)	Demand 2018(ccf)	Demand 2019(ccf)	Demand 2020(ccf)
Resident	487,688	488,933	490,182	491,433	492,688	493,946	495,207	496,472	497,739	499,010
Multi- Residential	29,736	30,214	30,700	31,193	31,695	32,204	32,722	33,248	33,783	34,326
Commercial	48,646	49,037	49,431	49,827	50,227	50,630	51,037	51,446	51,859	52,276
Industrial	140	140	141	141	142	142	143	143	143	144
Government	15,242	15,290	15,338	15,385	15,433	15,482	15,530	15,578	15,627	15,676
Other	221	222	223	223	224	225	226	226	227	228
Unaccounted	0	0	0	0	0	0	0	0	0	0
<b>Total</b>	<b>581,674</b>	<b>583,836</b>	<b>586,013</b>	<b>588,204</b>	<b>590,409</b>	<b>592,629</b>	<b>594,864</b>	<b>597,114</b>	<b>599,379</b>	<b>601,659</b>

Customer Type	Demand 2011(AF)	Demand 2012(AF)	Demand 2013(AF)	Demand 2014(AF)	Demand 2015(AF)	Demand 2016(AF)	Demand 2017(AF)	Demand 2018(AF)	Demand 2019(AF)	Demand 2020(AF)
Resident	1,120	1,122	1,125	1,128	1,131	1,134	1,137	1,140	1,143	1,146
Multi- Residential	68	69	70	72	73	74	75	76	78	79
Commercial	112	113	113	114	115	116	117	118	119	120
Industrial	0	0	0	0	0	0	0	0	0	0
Government	35	35	35	35	35	36	36	36	36	36
Other	1	1	1	1	1	1	1	1	1	1
Unaccounted	0	0	0	0	0	0	0	0	0	0
<b>Total</b>	<b>1,335</b>	<b>1,340</b>	<b>1,345</b>	<b>1,350</b>	<b>1,355</b>	<b>1,360</b>	<b>1,366</b>	<b>1,371</b>	<b>1,376</b>	<b>1,381</b>

**California Water Service Company - Dixon District**  
**Water Supply and Demand Analysis and Projections**

Scenario #1: Based on Maintaining Growth at the

15-Year  
 5-Year

Average Annual Growth and

Low

Average

High

**2020's Projections**

Demand per Service for each Customer Class.

Customer Type	Projected Services 2021	Projected Services 2022	Projected Services 2023	Projected Services 2024	Projected Services 2025	Projected Services 2026	Projected Services 2027	Projected Services 2028	Projected Services 2029	Projected Services 2030
Resident	2,662	2,669	2,676	2,683	2,690	2,696	2,703	2,710	2,717	2,724
Multi- Residential	25	26	26	27	27	28	28	28	29	29
Commercial	170	171	172	174	175	176	178	179	181	182
Industrial	3	3	3	3	3	3	3	3	3	3
Government	37	37	38	38	38	38	38	38	38	38
Other	1	1	1	1	1	1	1	1	1	1
<b>Total</b>	<b>2,899</b>	<b>2,907</b>	<b>2,916</b>	<b>2,925</b>	<b>2,934</b>	<b>2,943</b>	<b>2,951</b>	<b>2,960</b>	<b>2,969</b>	<b>2,978</b>

Customer Type	Demand 2021(ccf)	Demand 2022(ccf)	Demand 2023(ccf)	Demand 2024(ccf)	Demand 2025(ccf)	Demand 2026(ccf)	Demand 2027(ccf)	Demand 2028(ccf)	Demand 2029(ccf)	Demand 2030(ccf)
Resident	500,284	501,562	502,842	504,126	505,413	506,704	507,998	509,295	510,595	511,899
Multi- Residential	34,878	35,439	36,009	36,588	37,176	37,774	38,382	38,999	39,626	40,263
Commercial	52,695	53,118	53,545	53,974	54,408	54,844	55,285	55,728	56,176	56,626
Industrial	144	145	145	146	146	147	147	147	148	148
Government	15,725	15,774	15,823	15,872	15,922	15,971	16,021	16,071	16,121	16,172
Other	228	229	230	231	231	232	233	233	234	235
Unaccounted	0	0	0	0	0	0	0	0	0	0
<b>Total</b>	<b>603,955</b>	<b>606,267</b>	<b>608,594</b>	<b>610,937</b>	<b>613,297</b>	<b>615,672</b>	<b>618,065</b>	<b>620,474</b>	<b>622,900</b>	<b>625,343</b>

Customer Type	Demand 2021(AF)	Demand 2022(AF)	Demand 2023(AF)	Demand 2024(AF)	Demand 2025(AF)	Demand 2026(AF)	Demand 2027(AF)	Demand 2028(AF)	Demand 2029(AF)	Demand 2030(AF)
Resident	1,149	1,151	1,154	1,157	1,160	1,163	1,166	1,169	1,172	1,175
Multi- Residential	80	81	83	84	85	87	88	90	91	92
Commercial	121	122	123	124	125	126	127	128	129	130
Industrial	0	0	0	0	0	0	0	0	0	0
Government	36	36	36	36	37	37	37	37	37	37
Other	1	1	1	1	1	1	1	1	1	1
Unaccounted	0	0	0	0	0	0	0	0	0	0
<b>Total</b>	<b>1,386</b>	<b>1,392</b>	<b>1,397</b>	<b>1,403</b>	<b>1,408</b>	<b>1,413</b>	<b>1,419</b>	<b>1,424</b>	<b>1,430</b>	<b>1,436</b>

**California Water Service Company - Dixon District**  
**Water Supply and Demand Analysis and Projections**

Scenario #1: Based on Maintaining Growth at the  15-Year Average Annual Growth and  Low Demand per Service for each Customer Class.  
 5-Year  Average  High

**2030's Projections**

Customer Type	Projected Services 2031	Projected Services 2032	Projected Services 2033	Projected Services 2034	Projected Services 2035	Projected Services 2036	Projected Services 2037	Projected Services 2038	Projected Services 2039	Projected Services 2040
Resident	2,731	2,738	2,745	2,752	2,759	2,766	2,773	2,780	2,787	2,794
Multi- Residential	30	30	31	31	32	32	33	33	34	34
Commercial	184	185	187	188	190	191	193	194	196	197
Industrial	3	3	3	3	3	3	3	3	3	3
Government	39	39	39	39	39	39	39	39	40	40
Other	1	1	1	1	1	1	1	1	1	1
<b>Total</b>	<b>2,987</b>	<b>2,996</b>	<b>3,005</b>	<b>3,015</b>	<b>3,024</b>	<b>3,033</b>	<b>3,042</b>	<b>3,051</b>	<b>3,061</b>	<b>3,070</b>

Customer Type	Demand 2031(ccf)	Demand 2032(ccf)	Demand 2033(ccf)	Demand 2034(ccf)	Demand 2035(ccf)	Demand 2036(ccf)	Demand 2037(ccf)	Demand 2038(ccf)	Demand 2039(ccf)	Demand 2040(ccf)
Resident	513,206	514,516	515,830	517,147	518,468	519,792	521,119	522,449	523,783	525,121
Multi- Residential	40,910	41,568	42,237	42,916	43,606	44,307	45,020	45,744	46,479	47,227
Commercial	57,081	57,539	58,001	58,467	58,936	59,409	59,886	60,366	60,851	61,339
Industrial	149	149	150	150	151	151	152	152	153	153
Government	16,222	16,273	16,324	16,374	16,426	16,477	16,528	16,580	16,631	16,683
Other	236	236	237	238	239	239	240	241	242	242
Unaccounted	0	0	0	0	0	0	0	0	0	0
<b>Total</b>	<b>627,804</b>	<b>630,282</b>	<b>632,778</b>	<b>635,292</b>	<b>637,824</b>	<b>640,375</b>	<b>642,944</b>	<b>645,532</b>	<b>648,139</b>	<b>650,765</b>

Customer Type	Demand 2031(AF)	Demand 2032(AF)	Demand 2033(AF)	Demand 2034(AF)	Demand 2035(AF)	Demand 2036(AF)	Demand 2037(AF)	Demand 2038(AF)	Demand 2039(AF)	Demand 2040(AF)
Resident	1,178	1,181	1,184	1,187	1,190	1,193	1,196	1,199	1,202	1,206
Multi- Residential	94	95	97	99	100	102	103	105	107	108
Commercial	131	132	133	134	135	136	137	139	140	141
Industrial	0	0	0	0	0	0	0	0	0	0
Government	37	37	37	38	38	38	38	38	38	38
Other	1	1	1	1	1	1	1	1	1	1
Unaccounted	0	0	0	0	0	0	0	0	0	0
<b>Total</b>	<b>1,441</b>	<b>1,447</b>	<b>1,453</b>	<b>1,458</b>	<b>1,464</b>	<b>1,470</b>	<b>1,476</b>	<b>1,482</b>	<b>1,488</b>	<b>1,494</b>

## California Water Service Company - Dixon District

### Water Supply and Demand Analysis and Projections

Scenario #2: Based on Maintaining Growth at the  15-Year Average Annual Growth and  Low Demand per Service for each Customer Class.  
 5-Year Average Annual Growth and  Average Demand per Service for each Customer Class.  
 High Demand per Service for each Customer Class.

Summary of Historical Growth Rate from Worksheet 2			
Customer Type	15 Yr Avg. Historical Growth Rate	Individual Growth Rate Selected	Notes
Single Family Residential	0.255%	0.26%	Historical growth rate used
Multi Family Residential	1.608%	1.61%	Historical growth rate used
Commercial	0.803%	0.80%	Historical growth rate used
Industrial	-0.778%	0.31%	Overall growth rate used
Government	2.247%	0.31%	Overall growth rate used
Other	-3.889%	0.31%	Overall growth rate used
Overall	0.312%	0.30%	

Summary of Average Demand per Service from Worksheets 5 and 6									
Demand/Serv. Units	Multi-Residential						Total Other	Unaccounted Total Serv.	Combined Demand/Serv.
	Residential	(service)	(unit)	Commercial	Industrial	Government			
Gal/Service/Yr	167,488	1,911,977	123,120	330,001	131,657	629,378	348,606	11,825	200,645
AF/Service/Yr	0.514	5.868	0.378	1.013	0.404	1.931	1.070	0.036	0.616
Gal/Service/Day	459	5,238	337	904	361	1,724	955	32	550



# California Water Service Company - Dixon District

## Water Supply and Demand Analysis and Projections

Worksheet 11

### 30-year projection Summary

Scenario #2: Based on Maintaining Growth at the  15-Year  5-Year Average Annual Growth and  Low  Average  High Demand per Service for each Customer Class.

Customer Type	Projected Services 2010	Projected Services 2015	Projected Services 2020	Projected Services 2025	Projected Services 2030	Projected Services 2035	Projected Services 2040	Services projected to be added from 2010 - 2040
Single Family Residential	2,589	2,622	2,655	2,690	2,724	2,759	2,794	206
Multi Family Residential	21	23	25	27	29	32	34	13
Commercial	155	162	168	175	182	190	197	42
Industrial	3	3	3	3	3	3	3	0
Government	36	37	37	38	38	39	40	4
Other	1	1	1	1	1	1	1	0
<b>Total</b>	<b>2,805</b>	<b>2,847</b>	<b>2,890</b>	<b>2,934</b>	<b>2,978</b>	<b>3,024</b>	<b>3,070</b>	<b>265</b>

Customer Type	Projected Demand 2010 (ccf)	Projected Demand 2015 (ccf)	Projected Demand 2020 (ccf)	Projected Demand 2025 (ccf)	Projected Demand 2030 (ccf)	Projected Demand 2035 (ccf)	Projected Demand 2040 (ccf)	Projected demand to be added from 2010 - 2040 (ccf)
Single Family Residential	579,581	587,019	594,551	602,181	609,908	617,734	625,661	46,079
Multi Family Residential	54,538	59,066	63,970	69,281	75,033	81,263	88,010	33,473
Commercial	68,482	71,275	74,181	77,207	80,355	83,632	87,043	18,562
Industrial	530	538	546	555	564	573	582	52
Government	30,383	30,860	31,345	31,837	32,336	32,844	33,360	2,976
Other	467	475	482	490	498	505	513	46
Unaccounted	44,347	45,010	45,686	46,377	47,081	47,800	48,535	4,188
<b>Total</b>	<b>778,328</b>	<b>794,242</b>	<b>810,762</b>	<b>827,926</b>	<b>845,775</b>	<b>864,352</b>	<b>883,703</b>	<b>105,375</b>

Customer Type	Projected Demand 2010 (AF)	Projected Demand 2015 (AF)	Projected Demand 2020 (AF)	Projected Demand 2025 (AF)	Projected Demand 2030 (AF)	Projected Demand 2035 (AF)	Projected Demand 2040 (AF)	Projected demand to be added from 2010 - 2040 (AF)
Single Family Residential	1,331	1,348	1,365	1,382	1,400	1,418	1,436	106
Multi Family Residential	125	136	147	159	172	187	202	77
Commercial	157	164	170	177	184	192	200	43
Industrial	1	1	1	1	1	1	1	0
Government	70	71	72	73	74	75	77	7
Other	1	1	1	1	1	1	1	0
Unaccounted	102	103	105	106	108	110	111	10
<b>Total</b>	<b>1,787</b>	<b>1,823</b>	<b>1,861</b>	<b>1,901</b>	<b>1,942</b>	<b>1,984</b>	<b>2,029</b>	<b>242</b>

## California Water Service Company - Dixon District Water Supply and Demand Analysis and Projections

Worksheet 11

## 2000's Projections

Scenario #2: Based on Maintaining Growth at the

- 
- 15-Year
- 
- 
- 5-Year

Average Annual Growth and

 Low Average High

Demand per Service for each Customer Class.

Customer Type	Actual Services 2001	Actual Services 2002	Actual Services 2003	Actual Services 2004	Actual Services 2005	Actual Services 2006	Actual Services 2007	Actual Services 2008	Actual Services 2009	Projected Services 2010
Resident	2,634	2,640	2,637	2,636	2,657	2,666	2,653	2,609	2,582	2,589
Multi- Residential	17	17	17	17	17	17	16	20	21	21
Commercial	134	136	136	139	141	143	152	157	154	155
Industrial	4	5	5	5	4	4	4	4	3	3
Government	22	24	25	24	24	25	25	31	36	36
Other	0	0	0	3	3	4	4	3	1	1
<b>Total</b>	<b>2,812</b>	<b>2,822</b>	<b>2,820</b>	<b>2,824</b>	<b>2,846</b>	<b>2,859</b>	<b>2,854</b>	<b>2,824</b>	<b>2,797</b>	<b>2,805</b>

Customer Type	Demand 2001(ccf)	Demand 2002(ccf)	Demand 2003(ccf)	Demand 2004(ccf)	Demand 2005(ccf)	Demand 2006(ccf)	Demand 2007(ccf)	Demand 2008(ccf)	Demand 2009(ccf)	Demand 2010(ccf)
Resident	589,748	591,129	590,438	590,214	594,898	596,913	594,002	584,207	578,105	579,581
Multi- Residential	43,451	43,451	43,451	43,451	43,451	43,451	40,895	51,119	53,675	54,538
Commercial	59,297	59,922	60,143	61,319	62,201	63,084	67,054	69,260	67,936	68,482
Industrial	704	880	880	880	704	704	704	704	528	530
Government	18,790	19,842	21,034	20,333	20,192	21,034	21,034	26,082	30,289	30,383
Other	0	0	0	1,398	1,398	1,864	1,864	1,398	466	467
Unaccounted	44,449	44,604	44,586	44,647	44,990	45,196	45,117	44,647	44,216	44,347
<b>Total</b>	<b>756,439</b>	<b>759,828</b>	<b>760,532</b>	<b>762,242</b>	<b>767,835</b>	<b>772,245</b>	<b>770,670</b>	<b>777,415</b>	<b>775,215</b>	<b>778,328</b>

Customer Type	Demand 2001(AF)	Demand 2002(AF)	Demand 2003(AF)	Demand 2004(AF)	Demand 2005(AF)	Demand 2006(AF)	Demand 2007(AF)	Demand 2008(AF)	Demand 2009(AF)	Demand 2010(AF)
Resident	1,354	1,357	1,355	1,355	1,366	1,370	1,364	1,341	1,327	1,331
Multi- Residential	100	100	100	100	100	100	94	117	123	125
Commercial	136	138	138	141	143	145	154	159	156	157
Industrial	2	2	2	2	2	2	2	2	1	1
Government	43	46	48	47	46	48	48	60	70	70
Other	0	0	0	3	3	4	4	3	1	1
Unaccounted	102	102	102	102	103	104	104	102	102	102
<b>Total</b>	<b>1,737</b>	<b>1,744</b>	<b>1,746</b>	<b>1,750</b>	<b>1,763</b>	<b>1,773</b>	<b>1,769</b>	<b>1,785</b>	<b>1,780</b>	<b>1,787</b>

## California Water Service Company - Dixon District

### Water Supply and Demand Analysis and Projections

Worksheet 11

## 2010's Projections

Scenario #2: Based on Maintaining Growth at the  15-Year  5-Year Average Annual Growth and  Low  Average  High Demand per Service for each Customer Class.

Customer Type	Projected Services 2011	Projected Services 2012	Projected Services 2013	Projected Services 2014	Projected Services 2015	Projected Services 2016	Projected Services 2017	Projected Services 2018	Projected Services 2019	Projected Services 2020
Resident	2,595	2,602	2,608	2,615	2,622	2,629	2,635	2,642	2,649	2,655
Multi- Residential	22	22	22	23	23	23	24	24	25	25
Commercial	156	158	159	160	162	163	164	165	167	168
Industrial	3	3	3	3	3	3	3	3	3	3
Government	36	36	36	37	37	37	37	37	37	37
Other	1	1	1	1	1	1	1	1	1	1
<b>Total</b>	<b>2,814</b>	<b>2,822</b>	<b>2,830</b>	<b>2,839</b>	<b>2,847</b>	<b>2,856</b>	<b>2,864</b>	<b>2,873</b>	<b>2,881</b>	<b>2,890</b>

Customer Type	Demand 2011(ccf)	Demand 2012(ccf)	Demand 2013(ccf)	Demand 2014(ccf)	Demand 2015(ccf)	Demand 2016(ccf)	Demand 2017(ccf)	Demand 2018(ccf)	Demand 2019(ccf)	Demand 2020(ccf)
Resident	581,061	582,545	584,032	585,524	587,019	588,517	590,020	591,527	593,037	594,551
Multi- Residential	55,415	56,306	57,211	58,131	59,066	60,016	60,981	61,961	62,957	63,970
Commercial	69,031	69,585	70,144	70,707	71,275	71,847	72,423	73,005	73,591	74,181
Industrial	531	533	535	536	538	540	541	543	545	546
Government	30,478	30,573	30,668	30,764	30,860	30,956	31,053	31,150	31,247	31,345
Other	469	470	472	473	475	476	478	479	481	482
Unaccounted	44,478	44,611	44,743	44,876	45,010	45,144	45,279	45,414	45,550	45,686
<b>Total</b>	<b>781,464</b>	<b>784,623</b>	<b>787,805</b>	<b>791,012</b>	<b>794,242</b>	<b>797,496</b>	<b>800,775</b>	<b>804,079</b>	<b>807,408</b>	<b>810,762</b>

Customer Type	Demand 2011(AF)	Demand 2012(AF)	Demand 2013(AF)	Demand 2014(AF)	Demand 2015(AF)	Demand 2016(AF)	Demand 2017(AF)	Demand 2018(AF)	Demand 2019(AF)	Demand 2020(AF)
Resident	1,334	1,337	1,341	1,344	1,348	1,351	1,355	1,358	1,361	1,365
Multi- Residential	127	129	131	133	136	138	140	142	145	147
Commercial	158	160	161	162	164	165	166	168	169	170
Industrial	1	1	1	1	1	1	1	1	1	1
Government	70	70	70	71	71	71	71	72	72	72
Other	1	1	1	1	1	1	1	1	1	1
Unaccounted	102	102	103	103	103	104	104	104	105	105
<b>Total</b>	<b>1,794</b>	<b>1,801</b>	<b>1,809</b>	<b>1,816</b>	<b>1,823</b>	<b>1,831</b>	<b>1,838</b>	<b>1,846</b>	<b>1,854</b>	<b>1,861</b>

**California Water Service Company - Dixon District  
Water Supply and Demand Analysis and Projections**

**2020's Projections**

Scenario #2: Based on Maintaining Growth at the  15-Year Average Annual Growth and  Average Demand per Service for each Customer Class.  
 5-Year  Low  High

Customer Type	Projected Services 2021	Projected Services 2022	Projected Services 2023	Projected Services 2024	Projected Services 2025	Projected Services 2026	Projected Services 2027	Projected Services 2028	Projected Services 2029	Projected Services 2030
Resident	2,662	2,669	2,676	2,683	2,690	2,696	2,703	2,710	2,717	2,724
Multi- Residential	25	26	26	27	27	28	28	28	29	29
Commercial	170	171	172	174	175	176	178	179	181	182
Industrial	3	3	3	3	3	3	3	3	3	3
Government	37	37	38	38	38	38	38	38	38	38
Other	1	1	1	1	1	1	1	1	1	1
<b>Total</b>	<b>2,899</b>	<b>2,907</b>	<b>2,916</b>	<b>2,925</b>	<b>2,934</b>	<b>2,943</b>	<b>2,951</b>	<b>2,960</b>	<b>2,969</b>	<b>2,978</b>

Customer Type	Demand 2021(ccf)	Demand 2022(ccf)	Demand 2023(ccf)	Demand 2024(ccf)	Demand 2025(ccf)	Demand 2026(ccf)	Demand 2027(ccf)	Demand 2028(ccf)	Demand 2029(ccf)	Demand 2030(ccf)
Resident	596,069	597,591	599,117	600,647	602,181	603,718	605,260	606,805	608,354	609,908
Multi- Residential	64,998	66,044	67,106	68,185	69,281	70,395	71,527	72,677	73,846	75,033
Commercial	74,777	75,377	75,982	76,592	77,207	77,826	78,451	79,081	79,715	80,355
Industrial	548	550	552	553	555	557	558	560	562	564
Government	31,442	31,540	31,639	31,738	31,837	31,936	32,036	32,136	32,236	32,336
Other	484	485	487	488	490	491	493	494	496	498
Unaccounted	45,823	45,961	46,099	46,237	46,377	46,516	46,657	46,798	46,939	47,081
<b>Total</b>	<b>814,142</b>	<b>817,548</b>	<b>820,981</b>	<b>824,440</b>	<b>827,926</b>	<b>831,440</b>	<b>834,981</b>	<b>838,551</b>	<b>842,149</b>	<b>845,775</b>

Customer Type	Demand 2021(AF)	Demand 2022(AF)	Demand 2023(AF)	Demand 2024(AF)	Demand 2025(AF)	Demand 2026(AF)	Demand 2027(AF)	Demand 2028(AF)	Demand 2029(AF)	Demand 2030(AF)
Resident	1,368	1,372	1,375	1,379	1,382	1,386	1,389	1,393	1,397	1,400
Multi- Residential	149	152	154	157	159	162	164	167	170	172
Commercial	172	173	174	176	177	179	180	182	183	184
Industrial	1	1	1	1	1	1	1	1	1	1
Government	72	72	73	73	73	73	74	74	74	74
Other	1	1	1	1	1	1	1	1	1	1
Unaccounted	105	106	106	106	106	107	107	107	108	108
<b>Total</b>	<b>1,869</b>	<b>1,877</b>	<b>1,885</b>	<b>1,893</b>	<b>1,901</b>	<b>1,909</b>	<b>1,917</b>	<b>1,925</b>	<b>1,933</b>	<b>1,942</b>

**California Water Service Company - Dixon District  
Water Supply and Demand Analysis and Projections**

Scenario #2: Based on Maintaining Growth at the  15-Year  5-Year Average Annual Growth and  Low  Average  High Demand per Service for each Customer Class.

Customer Type	Projected Services 2031	Projected Services 2032	Projected Services 2033	Projected Services 2034	Projected Services 2035	Projected Services 2036	Projected Services 2037	Projected Services 2038	Projected Services 2039	Projected Services 2040
Resident	2,731	2,738	2,745	2,752	2,759	2,766	2,773	2,780	2,787	2,794
Multi- Residential	30	30	31	31	32	32	33	33	34	34
Commercial	184	185	187	188	190	191	193	194	196	197
Industrial	3	3	3	3	3	3	3	3	3	3
Government	39	39	39	39	39	39	39	39	40	40
Other	1	1	1	1	1	1	1	1	1	1
<b>Total</b>	<b>2,987</b>	<b>2,996</b>	<b>3,005</b>	<b>3,015</b>	<b>3,024</b>	<b>3,033</b>	<b>3,042</b>	<b>3,051</b>	<b>3,061</b>	<b>3,070</b>

Customer Type	Demand 2031(ccf)	Demand 2032(ccf)	Demand 2033(ccf)	Demand 2034(ccf)	Demand 2035(ccf)	Demand 2036(ccf)	Demand 2037(ccf)	Demand 2038(ccf)	Demand 2039(ccf)	Demand 2040(ccf)
Resident	611,465	613,026	614,592	616,161	617,734	619,311	620,893	622,478	624,067	625,661
Multi- Residential	76,240	77,466	78,711	79,977	81,263	82,570	83,898	85,247	86,617	88,010
Commercial	81,000	81,650	82,306	82,967	83,632	84,304	84,980	85,663	86,350	87,043
Industrial	565	567	569	571	573	574	576	578	580	582
Government	32,437	32,538	32,640	32,742	32,844	32,946	33,049	33,152	33,256	33,360
Other	499	501	502	504	505	507	508	510	512	513
Unaccounted	47,224	47,367	47,511	47,655	47,800	47,946	48,092	48,239	48,386	48,535
<b>Total</b>	<b>849,431</b>	<b>853,116</b>	<b>856,831</b>	<b>860,576</b>	<b>864,352</b>	<b>868,159</b>	<b>871,997</b>	<b>875,867</b>	<b>879,769</b>	<b>883,703</b>

Customer Type	Demand 2031(AF)	Demand 2032(AF)	Demand 2033(AF)	Demand 2034(AF)	Demand 2035(AF)	Demand 2036(AF)	Demand 2037(AF)	Demand 2038(AF)	Demand 2039(AF)	Demand 2040(AF)
Resident	1,404	1,407	1,411	1,415	1,418	1,422	1,425	1,429	1,433	1,436
Multi- Residential	175	178	181	184	187	190	193	196	199	202
Commercial	186	187	189	190	192	194	195	197	198	200
Industrial	1	1	1	1	1	1	1	1	1	1
Government	74	75	75	75	75	76	76	76	76	77
Other	1	1	1	1	1	1	1	1	1	1
Unaccounted	108	109	109	109	110	110	110	111	111	111
<b>Total</b>	<b>1,950</b>	<b>1,958</b>	<b>1,967</b>	<b>1,976</b>	<b>1,984</b>	<b>1,993</b>	<b>2,002</b>	<b>2,011</b>	<b>2,020</b>	<b>2,029</b>

## California Water Service Company - Dixon District

### Water Supply and Demand Analysis and Projections

Worksheet 12

Scenario #3: Based on Maintaining Growth at the  15-Year Average Annual Growth and  Low Demand per Service for each Customer Class.  
 5-Year Average Annual Growth and  Average Demand per Service for each Customer Class.  
 High Demand per Service for each Customer Class.

Summary of Historical Growth Rate from Worksheet 2			
Customer Type	15 Yr Avg. Historical Growth Rate	Individual Growth Rate Selected	Notes
Single Family Residential	0.26%	0.26%	Historical growth rate used
Multi Family Residential	1.61%	1.61%	Historical growth rate used
Commercial	0.80%	0.80%	Historical growth rate used
Industrial	-0.78%	0.31%	Overall growth rate used
Government	2.25%	0.31%	Overall growth rate used
Other	-3.89%	0.31%	Overall growth rate used
Overall	0.31%	0.31%	

Summary of Maximum Demand per Service from Worksheets 5 and 6									
Demand/Serv. Units	Multi-Residential					Government	Total Other	Unaccounted Total Serv.	Combined Demand/Serv.
	Residential	(service)	(unit)	Commercial	Industrial				
Gal/Service/Yr	181,567	2,110,114	130,355	401,588	109,590	1,191,291	1,094,961	27,225	223,176
AF/Service/Yr	0.557	6.476	0.400	1.232	0.336	3.656	3.360	0.084	0.685
Gal/Service/Day	497	5,781	357	1,100	300	3,264	3,000	75	611

## California Water Service Company - Dixon District

### Water Supply and Demand Analysis and Projections

Worksheet 12

#### 30-year projection Summary

Scenario #3: Based on Maintaining Growth at the  15-Year  5-Year Average Annual Growth and  Low  Average  High Demand per Service for each Customer Class.

Customer Type	Projected Services 2010	Projected Services 2015	Projected Services 2020	Projected Services 2025	Projected Services 2030	Projected Services 2035	Projected Services 2040	Services projected to be added from 2010 - 2040
Single Family Residential	2,589	2,622	2,655	2,690	2,724	2,759	2,794	206
Multi Family Residential	21	23	25	27	29	32	34	13
Commercial	155	162	168	175	182	190	197	42
Industrial	3	3	3	3	3	3	3	0
Government	36	37	37	38	38	39	40	4
Other	1	1	1	1	1	1	1	0
<b>Total</b>	<b>2,805</b>	<b>2,847</b>	<b>2,890</b>	<b>2,934</b>	<b>2,978</b>	<b>3,024</b>	<b>3,070</b>	<b>265</b>

Customer Type	Projected Demand 2010 (ccf)	Projected Demand 2015 (ccf)	Projected Demand 2020 (ccf)	Projected Demand 2025 (ccf)	Projected Demand 2030 (ccf)	Projected Demand 2035 (ccf)	Projected Demand 2040 (ccf)	Projected demand to be added from 2010 - 2040 (ccf)
Single Family Residential	628,299	636,361	644,527	652,798	661,175	669,659	678,252	49,953
Multi Family Residential	60,189	65,187	70,599	76,461	82,809	89,684	97,131	36,941
Commercial	83,337	86,736	90,273	93,955	97,787	101,775	105,926	22,588
Industrial	441	448	455	462	469	477	484	43
Government	57,510	58,412	59,329	60,261	61,206	62,167	63,143	5,634
Other	1,468	1,491	1,515	1,539	1,563	1,587	1,612	144
Unaccounted	102,098	103,625	105,182	106,771	108,393	110,049	111,739	9,641
<b>Total</b>	<b>933,343</b>	<b>952,261</b>	<b>971,881</b>	<b>992,246</b>	<b>1,013,402</b>	<b>1,035,398</b>	<b>1,058,287</b>	<b>124,944</b>

Customer Type	Projected Demand 2010 (AF)	Projected Demand 2015 (AF)	Projected Demand 2020 (AF)	Projected Demand 2025 (AF)	Projected Demand 2030 (AF)	Projected Demand 2035 (AF)	Projected Demand 2040 (AF)	Projected demand to be added from 2010 - 2040 (AF)
Single Family Residential	1,442	1,461	1,480	1,499	1,518	1,537	1,557	115
Multi Family Residential	138	150	162	176	190	206	223	85
Commercial	191	199	207	216	224	234	243	52
Industrial	1	1	1	1	1	1	1	0
Government	132	134	136	138	141	143	145	13
Other	3	3	3	4	4	4	4	0
Unaccounted	234	238	241	245	249	253	257	22
<b>Total</b>	<b>2,143</b>	<b>2,186</b>	<b>2,231</b>	<b>2,278</b>	<b>2,326</b>	<b>2,377</b>	<b>2,430</b>	<b>287</b>

**California Water Service Company - Dixon District**  
**Water Supply and Demand Analysis and Projections**

**2000's Projections**

Scenario #3: Based on Maintaining Growth at the

- 15-Year  
 5-Year

Average Annual Growth and

- Low  
 Average  
 High

Demand per Service for each Customer Class.

Customer Type	Actual Services 2001	Actual Services 2002	Actual Services 2003	Actual Services 2004	Actual Services 2005	Actual Services 2006	Actual Services 2007	Actual Services 2008	Actual Services 2009	Projected Services 2010
Resident	2,634	2,640	2,637	2,636	2,657	2,666	2,653	2,609	2,582	2,589
Multi- Residential	17	17	17	17	17	17	16	20	21	21
Commercial	134	136	136	139	141	143	152	157	154	155
Industrial	4	5	5	5	4	4	4	4	3	3
Government	22	24	25	24	24	25	25	31	36	36
Other	0	0	0	3	3	4	4	3	1	1
<b>Total</b>	<b>2,812</b>	<b>2,822</b>	<b>2,820</b>	<b>2,824</b>	<b>2,846</b>	<b>2,859</b>	<b>2,854</b>	<b>2,824</b>	<b>2,797</b>	<b>2,805</b>

Customer Type	Demand 2001(ccf)	Demand 2002(ccf)	Demand 2003(ccf)	Demand 2004(ccf)	Demand 2005(ccf)	Demand 2006(ccf)	Demand 2007(ccf)	Demand 2008(ccf)	Demand 2009(ccf)	Demand 2010(ccf)
Resident	639,320	640,817	640,069	639,826	644,903	647,087	643,932	633,313	626,699	628,299
Multi- Residential	47,954	47,954	47,954	47,954	47,954	47,954	45,133	56,416	59,237	60,189
Commercial	72,161	72,921	73,190	74,621	75,695	76,769	81,600	84,284	82,674	83,337
Industrial	586	732	732	732	586	586	586	586	439	441
Government	35,566	37,557	39,813	38,486	38,220	39,813	39,813	49,368	57,331	57,510
Other	0	0	0	4,391	4,391	5,855	5,855	4,391	1,464	1,468
Unaccounted	102,333	102,691	102,649	102,788	103,580	104,053	103,871	102,788	101,796	102,098
<b>Total</b>	<b>897,920</b>	<b>902,672</b>	<b>904,406</b>	<b>908,798</b>	<b>915,329</b>	<b>922,116</b>	<b>920,790</b>	<b>931,147</b>	<b>929,640</b>	<b>933,343</b>

Customer Type	Demand 2001(AF)	Demand 2002(AF)	Demand 2003(AF)	Demand 2004(AF)	Demand 2005(AF)	Demand 2006(AF)	Demand 2007(AF)	Demand 2008(AF)	Demand 2009(AF)	Demand 2010(AF)
Resident	1,468	1,471	1,469	1,469	1,481	1,486	1,478	1,454	1,439	1,442
Multi- Residential	110	110	110	110	110	110	104	130	136	138
Commercial	166	167	168	171	174	176	187	193	190	191
Industrial	1	2	2	2	1	1	1	1	1	1
Government	82	86	91	88	88	91	91	113	132	132
Other	0	0	0	10	10	13	13	10	3	3
Unaccounted	235	236	236	236	238	239	238	236	234	234
<b>Total</b>	<b>2,061</b>	<b>2,072</b>	<b>2,076</b>	<b>2,086</b>	<b>2,101</b>	<b>2,117</b>	<b>2,114</b>	<b>2,138</b>	<b>2,134</b>	<b>2,143</b>



## California Water Service Company - Dixon District

### Water Supply and Demand Analysis and Projections

Worksheet 12

## 2010's Projections

Scenario #3: Based on Maintaining Growth at the  15-Year  5-Year Average Annual Growth and  Low  Average  High Demand per Service for each Customer Class.

Customer Type	Projected Services 2011	Projected Services 2012	Projected Services 2013	Projected Services 2014	Projected Services 2015	Projected Services 2016	Projected Services 2017	Projected Services 2018	Projected Services 2019	Projected Services 2020
Resident	2,595	2,602	2,608	2,615	2,622	2,629	2,635	2,642	2,649	2,655
Multi- Residential	22	22	22	23	23	23	24	24	25	25
Commercial	156	158	159	160	162	163	164	165	167	168
Industrial	3	3	3	3	3	3	3	3	3	3
Government	36	36	36	37	37	37	37	37	37	37
Other	1	1	1	1	1	1	1	1	1	1
<b>Total</b>	<b>2,814</b>	<b>2,822</b>	<b>2,830</b>	<b>2,839</b>	<b>2,847</b>	<b>2,856</b>	<b>2,864</b>	<b>2,873</b>	<b>2,881</b>	<b>2,890</b>

Customer Type	Demand 2011(ccf)	Demand 2012(ccf)	Demand 2013(ccf)	Demand 2014(ccf)	Demand 2015(ccf)	Demand 2016(ccf)	Demand 2017(ccf)	Demand 2018(ccf)	Demand 2019(ccf)	Demand 2020(ccf)
Resident	629,903	631,512	633,124	634,741	636,361	637,986	639,615	641,248	642,886	644,527
Multi- Residential	61,157	62,141	63,140	64,155	65,187	66,235	67,300	68,382	69,482	70,599
Commercial	84,006	84,681	85,360	86,045	86,736	87,432	88,134	88,842	89,555	90,273
Industrial	442	444	445	446	448	449	451	452	453	455
Government	57,689	57,869	58,049	58,231	58,412	58,595	58,777	58,961	59,145	59,329
Other	1,473	1,477	1,482	1,487	1,491	1,496	1,501	1,505	1,510	1,515
Unaccounted	102,401	102,705	103,010	103,317	103,625	103,934	104,244	104,555	104,868	105,182
<b>Total</b>	<b>937,072</b>	<b>940,828</b>	<b>944,611</b>	<b>948,422</b>	<b>952,261</b>	<b>956,127</b>	<b>960,022</b>	<b>963,946</b>	<b>967,899</b>	<b>971,881</b>

Customer Type	Demand 2011(AF)	Demand 2012(AF)	Demand 2013(AF)	Demand 2014(AF)	Demand 2015(AF)	Demand 2016(AF)	Demand 2017(AF)	Demand 2018(AF)	Demand 2019(AF)	Demand 2020(AF)
Resident	1,446	1,450	1,453	1,457	1,461	1,465	1,468	1,472	1,476	1,480
Multi- Residential	140	143	145	147	150	152	155	157	160	162
Commercial	193	194	196	198	199	201	202	204	206	207
Industrial	1	1	1	1	1	1	1	1	1	1
Government	132	133	133	134	134	135	135	135	136	136
Other	3	3	3	3	3	3	3	3	3	3
Unaccounted	235	236	236	237	238	239	239	240	241	241
<b>Total</b>	<b>2,151</b>	<b>2,160</b>	<b>2,169</b>	<b>2,177</b>	<b>2,186</b>	<b>2,195</b>	<b>2,204</b>	<b>2,213</b>	<b>2,222</b>	<b>2,231</b>

**California Water Service Company - Dixon District**  
**Water Supply and Demand Analysis and Projections**

**2020's Projections**

Scenario #3: Based on Maintaining Growth at the  15-Year Average Annual Growth and  Low Demand per Service for each Customer Class.  
 5-Year  Average  High

Customer Type	Projected Services 2021	Projected Services 2022	Projected Services 2023	Projected Services 2024	Projected Services 2025	Projected Services 2026	Projected Services 2027	Projected Services 2028	Projected Services 2029	Projected Services 2030
Resident	2,662	2,669	2,676	2,683	2,690	2,696	2,703	2,710	2,717	2,724
Multi- Residential	25	26	26	27	27	28	28	28	29	29
Commercial	170	171	172	174	175	176	178	179	181	182
Industrial	3	3	3	3	3	3	3	3	3	3
Government	37	37	38	38	38	38	38	38	38	38
Other	1	1	1	1	1	1	1	1	1	1
<b>Total</b>	<b>2,899</b>	<b>2,907</b>	<b>2,916</b>	<b>2,925</b>	<b>2,934</b>	<b>2,943</b>	<b>2,951</b>	<b>2,960</b>	<b>2,969</b>	<b>2,978</b>

Customer Type	Demand 2021(ccf)	Demand 2022(ccf)	Demand 2023(ccf)	Demand 2024(ccf)	Demand 2025(ccf)	Demand 2026(ccf)	Demand 2027(ccf)	Demand 2028(ccf)	Demand 2029(ccf)	Demand 2030(ccf)
Resident	646,173	647,823	649,477	651,135	652,798	654,465	656,136	657,811	659,491	661,175
Multi- Residential	71,734	72,888	74,060	75,251	76,461	77,690	78,939	80,209	81,499	82,809
Commercial	90,998	91,728	92,465	93,207	93,955	94,709	95,469	96,236	97,008	97,787
Industrial	456	458	459	461	462	463	465	466	468	469
Government	59,514	59,700	59,886	60,073	60,261	60,449	60,637	60,826	61,016	61,206
Other	1,519	1,524	1,529	1,534	1,539	1,543	1,548	1,553	1,558	1,563
Unaccounted	105,497	105,814	106,132	106,451	106,771	107,093	107,416	107,740	108,066	108,393
<b>Total</b>	<b>975,893</b>	<b>979,935</b>	<b>984,008</b>	<b>988,111</b>	<b>992,246</b>	<b>996,412</b>	<b>1,000,611</b>	<b>1,004,841</b>	<b>1,009,105</b>	<b>1,013,402</b>

Customer Type	Demand 2021(AF)	Demand 2022(AF)	Demand 2023(AF)	Demand 2024(AF)	Demand 2025(AF)	Demand 2026(AF)	Demand 2027(AF)	Demand 2028(AF)	Demand 2029(AF)	Demand 2030(AF)
Resident	1,483	1,487	1,491	1,495	1,499	1,502	1,506	1,510	1,514	1,518
Multi- Residential	165	167	170	173	176	178	181	184	187	190
Commercial	209	211	212	214	216	217	219	221	223	224
Industrial	1	1	1	1	1	1	1	1	1	1
Government	137	137	137	138	138	139	139	140	140	141
Other	3	3	4	4	4	4	4	4	4	4
Unaccounted	242	243	244	244	245	246	247	247	248	249
<b>Total</b>	<b>2,240</b>	<b>2,250</b>	<b>2,259</b>	<b>2,268</b>	<b>2,278</b>	<b>2,287</b>	<b>2,297</b>	<b>2,307</b>	<b>2,317</b>	<b>2,326</b>

**California Water Service Company - Dixon District**  
**Water Supply and Demand Analysis and Projections**

**2030's Projections**

Scenario #3: Based on Maintaining Growth at the

- 15-Year  
 5-Year

Average Annual Growth and

- Low  
 Average  
 High

Demand per Service for each Customer Class.

Customer Type	Projected Services 2031	Projected Services 2032	Projected Services 2033	Projected Services 2034	Projected Services 2035	Projected Services 2036	Projected Services 2037	Projected Services 2038	Projected Services 2039	Projected Services 2040
Resident	2,731	2,738	2,745	2,752	2,759	2,766	2,773	2,780	2,787	2,794
Multi- Residential	30	30	31	31	32	32	33	33	34	34
Commercial	184	185	187	188	190	191	193	194	196	197
Industrial	3	3	3	3	3	3	3	3	3	3
Government	39	39	39	39	39	39	39	39	40	40
Other	1	1	1	1	1	1	1	1	1	1
<b>Total</b>	<b>2,987</b>	<b>2,996</b>	<b>3,005</b>	<b>3,015</b>	<b>3,024</b>	<b>3,033</b>	<b>3,042</b>	<b>3,051</b>	<b>3,061</b>	<b>3,070</b>

Customer Type	Demand 2031(ccf)	Demand 2032(ccf)	Demand 2033(ccf)	Demand 2034(ccf)	Demand 2035(ccf)	Demand 2036(ccf)	Demand 2037(ccf)	Demand 2038(ccf)	Demand 2039(ccf)	Demand 2040(ccf)
Resident	662,863	664,555	666,252	667,953	669,659	671,369	673,083	674,802	676,524	678,252
Multi- Residential	84,141	85,494	86,868	88,265	89,684	91,127	92,592	94,081	95,594	97,131
Commercial	98,572	99,363	100,160	100,964	101,775	102,592	103,415	104,245	105,082	105,926
Industrial	471	472	474	475	477	478	480	481	483	484
Government	61,397	61,589	61,781	61,974	62,167	62,361	62,556	62,751	62,947	63,143
Other	1,568	1,572	1,577	1,582	1,587	1,592	1,597	1,602	1,607	1,612
Unaccounted	108,721	109,051	109,382	109,715	110,049	110,384	110,721	111,059	111,398	111,739
<b>Total</b>	<b>1,017,732</b>	<b>1,022,097</b>	<b>1,026,495</b>	<b>1,030,929</b>	<b>1,035,398</b>	<b>1,039,902</b>	<b>1,044,443</b>	<b>1,049,021</b>	<b>1,053,635</b>	<b>1,058,287</b>

Customer Type	Demand 2031(AF)	Demand 2032(AF)	Demand 2033(AF)	Demand 2034(AF)	Demand 2035(AF)	Demand 2036(AF)	Demand 2037(AF)	Demand 2038(AF)	Demand 2039(AF)	Demand 2040(AF)
Resident	1,522	1,526	1,530	1,533	1,537	1,541	1,545	1,549	1,553	1,557
Multi- Residential	193	196	199	203	206	209	213	216	219	223
Commercial	226	228	230	232	234	236	237	239	241	243
Industrial	1	1	1	1	1	1	1	1	1	1
Government	141	141	142	142	143	143	144	144	145	145
Other	4	4	4	4	4	4	4	4	4	4
Unaccounted	250	250	251	252	253	253	254	255	256	257
<b>Total</b>	<b>2,336</b>	<b>2,346</b>	<b>2,357</b>	<b>2,367</b>	<b>2,377</b>	<b>2,387</b>	<b>2,398</b>	<b>2,408</b>	<b>2,419</b>	<b>2,430</b>

**California Water Service Company - Dixon District**  
**Water Supply and Demand Analysis and Projections**

Worksheet 13

Scenario #4: Based on Maintaining Growth at the  10-Year Average Annual Growth  
 20-Year

Summary of Historical Growth Rate from Worksheet 2			
Customer Type	20 Yr Avg. Historical Growth Rate	Individual Growth Rate Selected	Notes
Single Family Residential	0.388%	0.388%	
Multi Family Residential	1.519%	1.519%	
Commercial	-0.523%	0.416%	
Industrial	0.460%	0.460%	
Government	-0.584%	0.416%	
Other	-2.917%	0.416%	
Overall	0.416%	0.400%	

**California Water Service Company - Dixon District**  
**Water Supply and Demand Analysis and Projections**

Worksheet 13

Scenario #4: Based on Maintaining Growth at the  10-Year Average Annual Growth  
 5-Year

**30 Projection Summary**

Customer Type	Projected Services 2010	Projected Services 2015	Projected Services 2020	Projected Services 2025	Projected Services 2030	Projected Services 2035	Projected Services 2040	Services projected to be added from 2010 - 2040
Single Family Residential	2,592	2,643	2,694	2,747	2,801	2,856	2,911	319
Multi Family Residential	21	23	25	27	29	31	34	12
Commercial	155	158	161	165	168	172	175	21
Industrial	3	3	3	3	3	3	3	0
Government	36	37	38	38	39	40	41	5
Other	1	1	1	1	1	1	1	0
<b>Total</b>	<b>2,808</b>	<b>2,865</b>	<b>2,922</b>	<b>2,981</b>	<b>3,041</b>	<b>3,103</b>	<b>3,166</b>	<b>357</b>

**California Water Service Company - Dixon District**  
**Water Supply and Demand Analysis and Projections**

Worksheet 13

**2000's Projections**

Scenario #4: Based on Maintaining Growth at the  10-Year Average Annual Growth  
 5-Year

Customer Type	Actual Services 2001	Actual Services 2002	Actual Services 2003	Actual Services 2004	Actual Services 2005	Actual Services 2006	Actual Services 2007	Actual Services 2008	Actual Services 2009	Projected Services 2010
Resident	2,634	2,640	2,637	2,636	2,657	2,666	2,653	2,609	2,582	2,592
Multi- Residential	17	17	17	17	17	17	16	20	21	21
Commercial	134	136	136	139	141	143	152	157	154	155
Industrial	4	5	5	5	4	4	4	4	3	3
Government	22	24	25	24	24	25	25	31	36	36
Other	0	0	0	3	3	4	4	3	1	1
<b>Total</b>	<b>2,812</b>	<b>2,822</b>	<b>2,820</b>	<b>2,824</b>	<b>2,846</b>	<b>2,859</b>	<b>2,854</b>	<b>2,824</b>	<b>2,797</b>	<b>2,808</b>

**2010's Projections**

Customer Type	Projected Services 2011	Projected Services 2012	Projected Services 2013	Projected Services 2014	Projected Services 2015	Projected Services 2016	Projected Services 2017	Projected Services 2018	Projected Services 2019	Projected Services 2020
Resident	2,602	2,612	2,622	2,632	2,643	2,653	2,663	2,674	2,684	2,694
Multi- Residential	22	22	22	23	23	23	24	24	24	25
Commercial	155	156	157	157	158	159	159	160	161	161
Industrial	3	3	3	3	3	3	3	3	3	3
Government	36	36	37	37	37	37	37	37	38	38
Other	1	1	1	1	1	1	1	1	1	1
<b>Total</b>	<b>2,819</b>	<b>2,831</b>	<b>2,842</b>	<b>2,853</b>	<b>2,865</b>	<b>2,876</b>	<b>2,887</b>	<b>2,899</b>	<b>2,911</b>	<b>2,922</b>

**California Water Service Company - Dixon District**  
**Water Supply and Demand Analysis and Projections**

Worksheet 13

**2020's Projections**

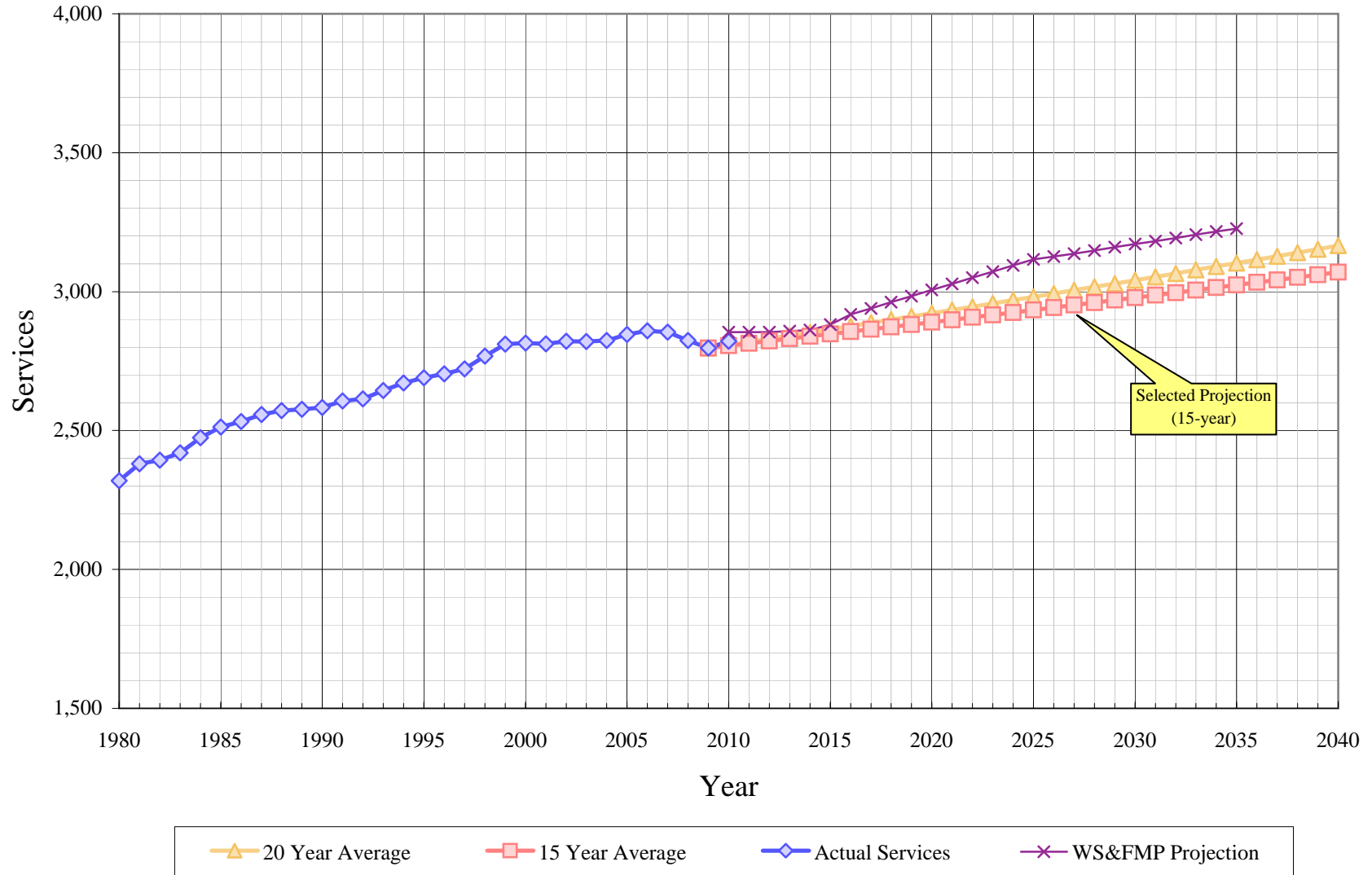
Scenario #4: Based on Maintaining Growth at the  10-Year Average Annual Growth  
 5-Year

Customer Type	Projected Services 2021	Projected Services 2022	Projected Services 2023	Projected Services 2024	Projected Services 2025	Projected Services 2026	Projected Services 2027	Projected Services 2028	Projected Services 2029	Projected Services 2030
Resident	2,705	2,715	2,726	2,736	2,747	2,758	2,768	2,779	2,790	2,801
Multi- Residential	25	26	26	26	27	27	28	28	28	29
Commercial	162	163	163	164	165	165	166	167	167	168
Industrial	3	3	3	3	3	3	3	3	3	3
Government	38	38	38	38	38	39	39	39	39	39
Other	1	1	1	1	1	1	1	1	1	1
<b>Total</b>	<b>2,934</b>	<b>2,946</b>	<b>2,957</b>	<b>2,969</b>	<b>2,981</b>	<b>2,993</b>	<b>3,005</b>	<b>3,017</b>	<b>3,029</b>	<b>3,041</b>

**2030's Projections**

Customer Type	Projected Services 2031	Projected Services 2032	Projected Services 2033	Projected Services 2034	Projected Services 2035	Projected Services 2036	Projected Services 2037	Projected Services 2038	Projected Services 2039	Projected Services 2040
Resident	2,812	2,823	2,833	2,844	2,856	2,867	2,878	2,889	2,900	2,911
Multi- Residential	29	30	30	31	31	32	32	33	33	34
Commercial	169	169	170	171	172	172	173	174	174	175
Industrial	3	3	3	3	3	3	3	3	3	3
Government	39	40	40	40	40	40	40	41	41	41
Other	1	1	1	1	1	1	1	1	1	1
<b>Total</b>	<b>3,053</b>	<b>3,066</b>	<b>3,078</b>	<b>3,090</b>	<b>3,103</b>	<b>3,115</b>	<b>3,128</b>	<b>3,140</b>	<b>3,153</b>	<b>3,166</b>

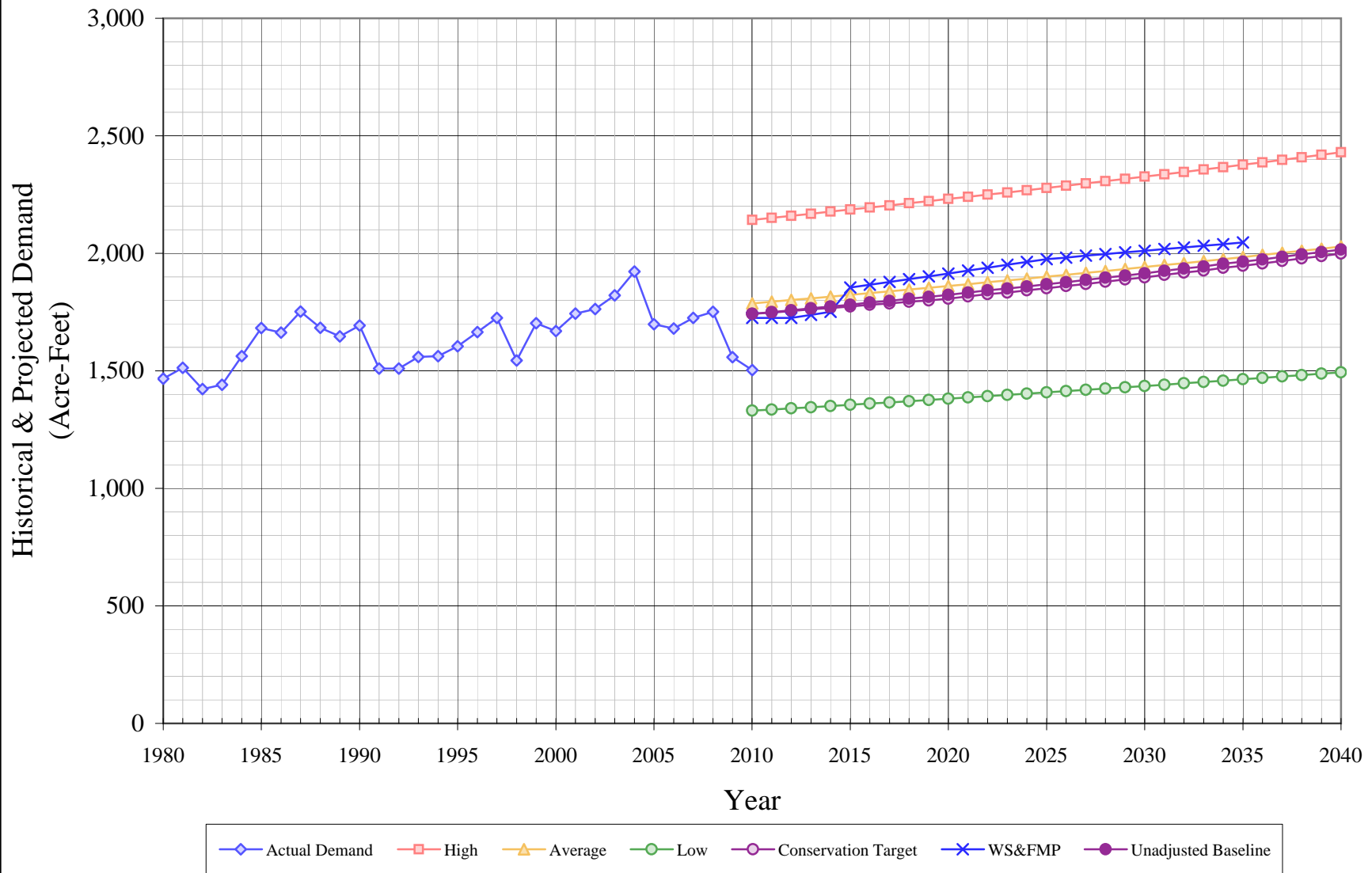
# Dixon District Historical & Projected Services







# Dixon District Projected Demand



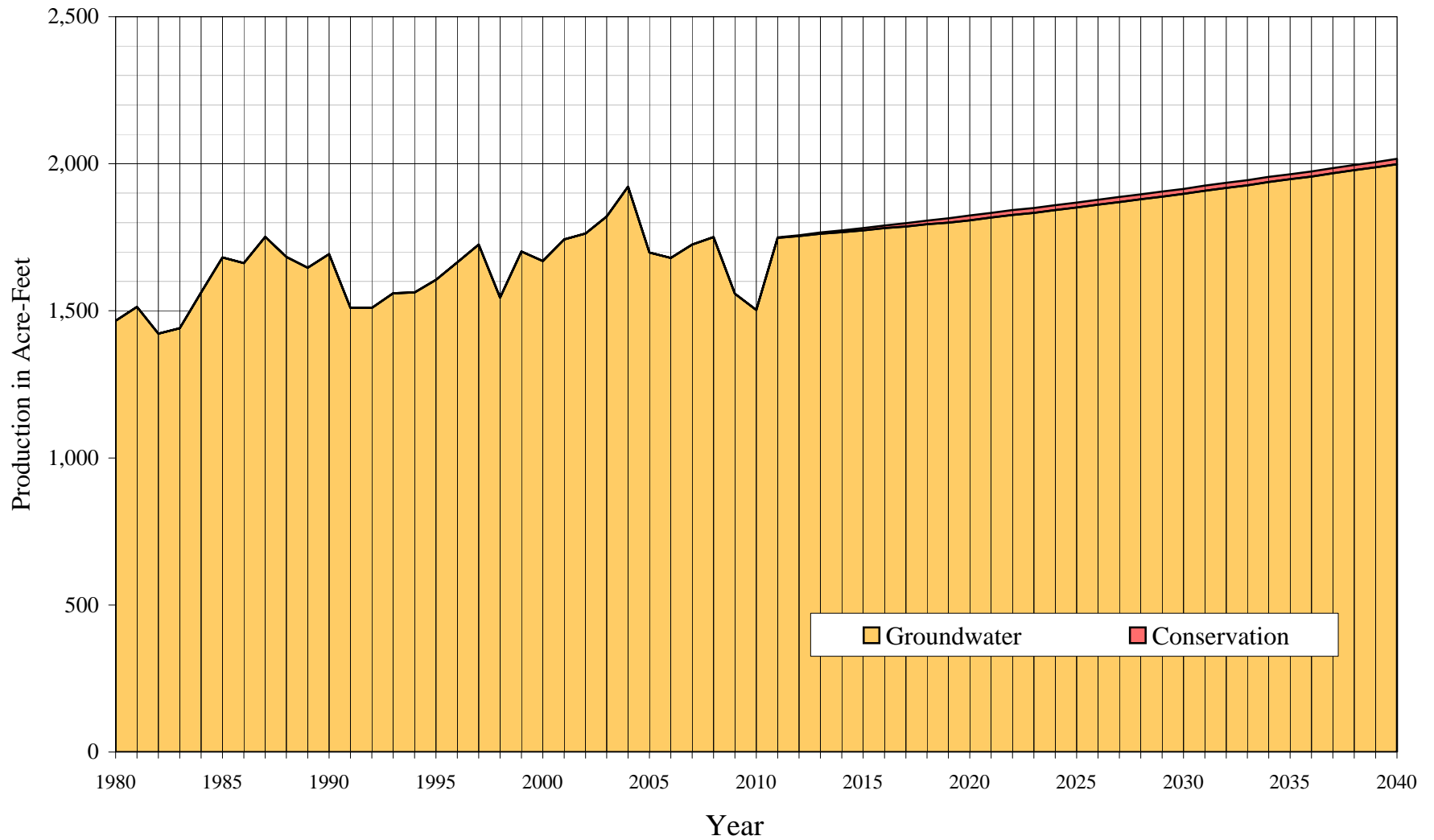
**California Water Service Company - Dixon District**  
**Water Supply and Demand Analysis and Projections**  
**Actual and Projected Demand in Acre-Feet**

Year	Actual Demand	Projection			Unadjusted Baseline Demand	Target Demand	WS&FMP
		Low	Average	High			
1980	1,466						
1981	1,513						
1982	1,422						
1983	1,441						
1984	1,562						
1985	1,682						
1986	1,662						
1987	1,752						
1988	1,683						
1989	1,646						
1990	1,693						
1991	1,510						
1992	1,510						
1993	1,560						
1994	1,563						
1995	1,605						
1996	1,665						
1997	1,725						
1998	1,545						
1999	1,702						
2000	1,669						
2001	1,743						
2002	1,763						
2003	1,821						
2004	1,922						
2005	1,698						
2006	1,680						
2007	1,725						
2008	1,751						
2009	1,558						
2010	1,503	1,330	1,787	2,143	1,742	1,742	1,725

Year	Actual Demand	Projection			Unadjusted Baseline Demand	Target Demand	WS&FMP
		Low	Average	High			
2011		1,335	1,794	2,151	1,750	1,748	1,725
2012		1,340	1,801	2,160	1,757	1,754	1,725
2013		1,345	1,809	2,169	1,766	1,762	1,738
2014		1,350	1,816	2,177	1,774	1,767	1,751
2015		1,355	1,823	2,186	1,781	1,773	1,854
2016		1,360	1,831	2,195	1,790	1,781	1,866
2017		1,366	1,838	2,204	1,798	1,787	1,878
2018		1,371	1,846	2,213	1,807	1,794	1,890
2019		1,376	1,854	2,222	1,815	1,800	1,902
2020		1,381	1,861	2,231	1,824	1,808	1,914
2021		1,386	1,869	2,240	1,833	1,817	1,927
2022		1,392	1,877	2,250	1,842	1,826	1,939
2023		1,397	1,885	2,259	1,850	1,833	1,951
2024		1,403	1,893	2,268	1,859	1,843	1,963
2025		1,408	1,901	2,278	1,868	1,852	1,975
2026		1,413	1,909	2,287	1,878	1,861	1,982
2027		1,419	1,917	2,297	1,887	1,870	1,990
2028		1,424	1,925	2,307	1,896	1,879	1,997
2029		1,430	1,933	2,317	1,905	1,888	2,004
2030		1,436	1,942	2,326	1,915	1,898	2,011
2031		1,441	1,950	2,336	1,926	1,909	2,018
2032		1,447	1,958	2,346	1,935	1,918	2,025
2033		1,453	1,967	2,357	1,944	1,927	2,032
2034		1,458	1,976	2,367	1,955	1,938	2,039
2035		1,464	1,984	2,377	1,965	1,947	
2036		1,470	1,993	2,387	1,974	1,956	
2037		1,476	2,002	2,398	1,985	1,967	
2038		1,482	2,011	2,408	1,996	1,978	
2039		1,488	2,020	2,419	2,005	1,988	
2040		1,494	2,029	2,430	2,017	1,999	

# Dixon District

## Historical and Projected Distribution of Demand by Source



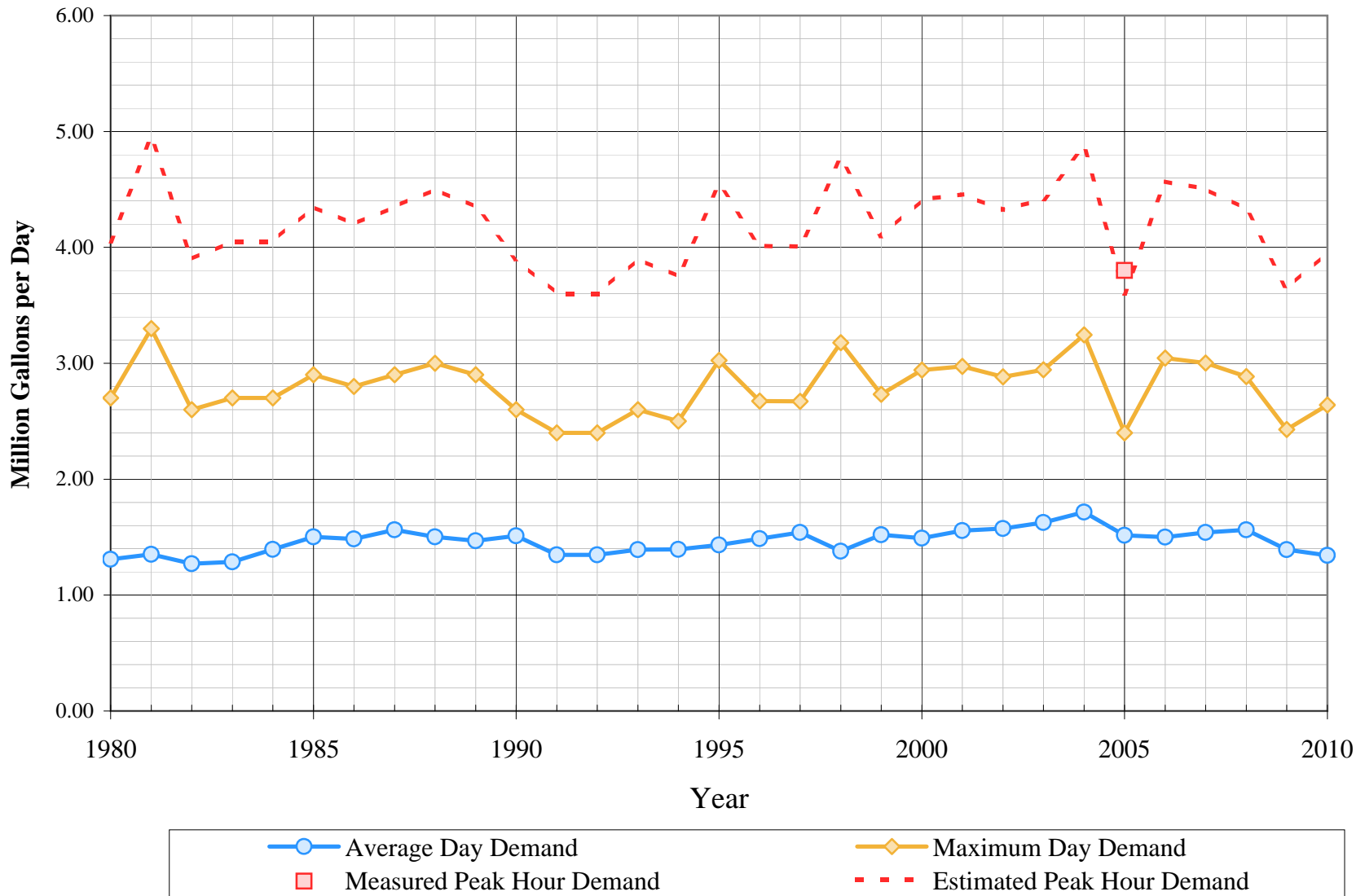
**California Water Service Company - Dixon District  
Water Supply and Demand Analysis and Projections to 2040  
Historical and Projected Distribution of Demand by Source**

Worksheet 17

Year	Purchased Water		Groundwater		Conservation		Total Supply	
	kGal	AFY	kGal	AFY	kGal	AFY	kGal	AFY
1980	0	0	477,827	1,466			477,827	1,466
1981	0	0	493,071	1,513			493,071	1,513
1982	0	0	463,407	1,422			463,407	1,422
1983	0	0	469,620	1,441			469,620	1,441
1984	0	0	509,021	1,562			509,021	1,562
1985	0	0	548,032	1,682			548,032	1,682
1986	0	0	541,636	1,662			541,636	1,662
1987	0	0	570,883	1,752			570,883	1,752
1988	0	0	548,482	1,683			548,482	1,683
1989	0	0	536,397	1,646			536,397	1,646
1990	0	0	551,747	1,693			551,747	1,693
1991	0	0	491,950	1,510			491,950	1,510
1992	0	0	491,999	1,510			491,999	1,510
1993	0	0	508,224	1,560			508,224	1,560
1994	0	0	509,187	1,563			509,187	1,563
1995	0	0	522,993	1,605			522,993	1,605
1996	0	0	542,544	1,665			542,544	1,665
1997	0	0	562,088	1,725			562,088	1,725
1998	0	0	503,341	1,545			503,341	1,545
1999	0	0	554,623	1,702			554,623	1,702
2000	0	0	543,843	1,669			543,843	1,669
2001	0	0	567,985	1,743			567,985	1,743
2002	0	0	574,567	1,763			574,567	1,763
2003	0	0	593,424	1,821			593,424	1,821
2004	0	0	626,366	1,922			626,366	1,922
2005	0	0	553,373	1,698			553,373	1,698
2006	0	0	547,438	1,680			547,438	1,680
2007	0	0	562,250	1,725			562,250	1,725
2008	0	0	570,461	1,751			570,461	1,751
2009	0	0	507,827	1,558			507,827	1,558
2010	0	0	489,799	1,503			489,799	1,503
2011	0	0	570,130	1,748	505	2	570,130	1,750
2012	0	0	572,546	1,754	1,015	3	572,546	1,757
2013	0	0	575,566	1,762	1,530	5	575,566	1,766
2014	0	0	577,982	1,767	2,048	6	577,982	1,774
2015	0	0	580,398	1,773	2,571	8	580,398	1,781
2016	0	0	583,417	1,781	3,101	10	583,417	1,790
2017	0	0	585,833	1,787	3,633	11	585,833	1,798
2018	0	0	588,853	1,794	4,174	13	588,853	1,807
2019	0	0	591,269	1,800	4,715	14	591,269	1,815
2020	0	0	594,289	1,808	5,265	16	594,289	1,824
2021	0	0	597,308	1,817	5,292	16	597,308	1,833
2022	0	0	600,328	1,826	5,319	16	600,328	1,842
2023	0	0	602,744	1,833	5,340	16	602,744	1,850
2024	0	0	605,764	1,843	5,367	16	605,764	1,859
2025	0	0	608,783	1,852	5,394	17	608,783	1,868
2026	0	0	611,803	1,861	5,420	17	611,803	1,878
2027	0	0	614,823	1,870	5,447	17	614,823	1,887
2028	0	0	617,843	1,879	5,474	17	617,843	1,896
2029	0	0	620,862	1,888	5,501	17	620,862	1,905
2030	0	0	623,882	1,898	5,527	17	623,882	1,915
2031	0	0	627,506	1,909	5,560	17	627,506	1,926
2032	0	0	630,526	1,918	5,586	17	630,526	1,935
2033	0	0	633,545	1,927	5,613	17	633,545	1,944
2034	0	0	637,169	1,938	5,645	17	637,169	1,955
2035	0	0	640,189	1,947	5,672	17	640,189	1,965
2036	0	0	643,209	1,956	5,699	17	643,209	1,974
2037	0	0	646,832	1,967	5,731	18	646,832	1,985
2038	0	0	650,456	1,978	5,763	18	650,456	1,996
2039	0	0	653,476	1,988	5,790	18	653,476	2,005
2040	0	0	657,099	1,999	5,822	18	657,099	2,017

# Dixon District

## Average Day, Maximum Day, and Peak Demand



## California Water Service Company - Dixon District

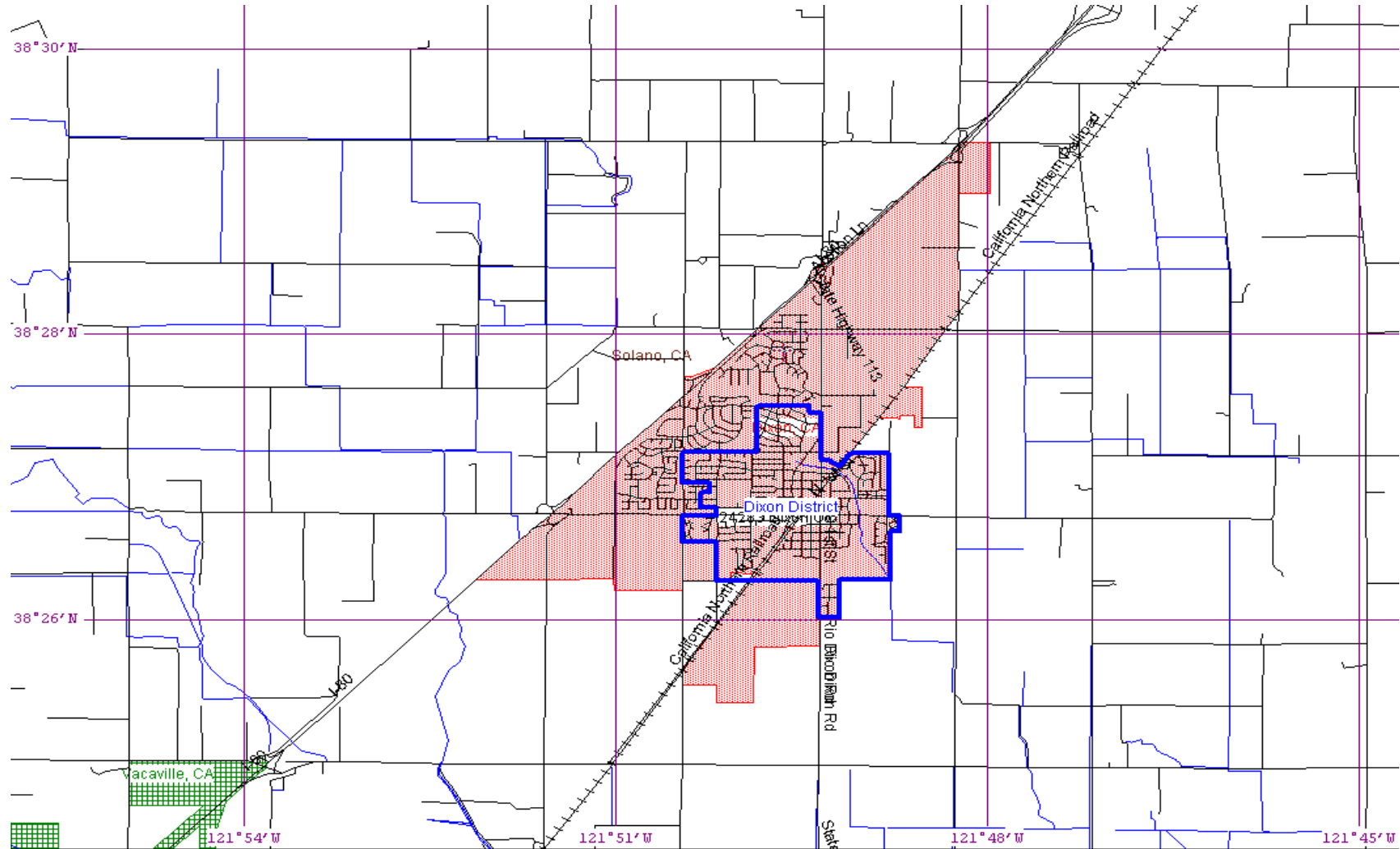
### Water Supply and Demand Analysis and Projections

#### Historical and Projected Average Day, Maximum Day, and Peak Demand

Year	Historical Annual Demand		Average Day Demand		Maximum Day Demand		MDD ADD Ratio	Estimated Peak Hour Demand		PHD MDD Ratio	PHD ADD Ratio	Measured Peak Hour Demand		PHD MDD Ratio
	(AFY)	(MGY)	(MGD)	(GPD)	(MGD)	(GPD)		(MGD)	(GPM)			(MGD)	(GPM)	
1980	1,466	478	1.31	565	2.70	1,164	2.06	4.05	2,813	1.50	3.09			
1981	1,513	493	1.35	568	3.30	1,387	2.44	4.95	3,438	1.50	3.66			
1982	1,422	463	1.27	531	2.60	1,087	2.05	3.90	2,708	1.50	3.07			
1983	1,441	470	1.29	532	2.70	1,116	2.10	4.05	2,813	1.50	3.15			
1984	1,562	509	1.39	564	2.70	1,091	1.94	4.05	2,813	1.50	2.90			
1985	1,682	548	1.50	597	2.90	1,154	1.93	4.35	3,021	1.50	2.90			
1986	1,662	542	1.48	586	2.80	1,106	1.89	4.20	2,917	1.50	2.83			
1987	1,752	571	1.56	611	2.90	1,134	1.85	4.35	3,021	1.50	2.78			
1988	1,683	548	1.50	584	3.00	1,166	2.00	4.50	3,125	1.50	2.99			
1989	1,646	536	1.47	570	2.90	1,126	1.97	4.35	3,021	1.50	2.96			
1990	1,693	552	1.51	585	2.60	1,007	1.72	3.90	2,708	1.50	2.58			
1991	1,510	492	1.35	517	2.40	921	1.78	3.60	2,500	1.50	2.67			
1992	1,510	492	1.35	516	2.40	918	1.78	3.60	2,500	1.50	2.67			
1993	1,560	508	1.39	527	2.60	983	1.87	3.90	2,708	1.50	2.80			
1994	1,563	509	1.39	522	2.50	936	1.79	3.75	2,604	1.50	2.69			
1995	1,605	523	1.43	533	3.03	1,125	2.11	4.54	3,151	1.50	3.17			
1996	1,665	543	1.49	550	2.67	989	1.80	4.01	2,785	1.50	2.70			
1997	1,725	562	1.54	566	2.67	982	1.74	4.01	2,783	1.50	2.60			
1998	1,545	503	1.38	498	3.18	1,148	2.30	4.77	3,310	1.50	3.46			
1999	1,702	555	1.52	541	2.73	972	1.80	4.10	2,846	1.50	2.70			
2000	1,669	544	1.49	529	2.94	1,045	1.97	4.41	3,064	1.50	2.96			
2001	1,743	568	1.56	553	2.97	1,057	1.91	4.46	3,096	1.50	2.86			
2002	1,763	575	1.57	558	2.88	1,021	1.83	4.32	3,002	1.50	2.75			
2003	1,821	593	1.63	576	2.94	1,044	1.81	4.42	3,067	1.50	2.72			
2004	1,922	626	1.72	608	3.25	1,149	1.89	4.87	3,381	1.50	2.84			
2005	1,698	553	1.52	533	2.40	843	1.58	3.60	2,500	1.50	2.37	3.80	2,639	1.583
2006	1,680	547	1.50	525	3.05	1,065	2.03	4.57	3,172	1.50	3.05			
2007	1,725	562	1.54	540	3.00	1,052	1.95	4.50	3,128	1.50	2.92			
2008	1,751	570	1.56	553	2.89	1,022	1.85	4.33	3,006	1.50	2.77			
2009	1,558	508	1.39	497	2.43	868	1.75	3.64	2,529	1.50	2.62			
2010	1,503	490	1.34	476	2.64	936	1.97	3.96	2,750	1.50	2.95			
5 year Average (2006-2010)			1.47	518	2.80	989	1.91	4.20	2,917	1.50	2.86			
10 year Average (2001-2010)			1.53	542	2.84	1,006	1.86	4.27	2,963	1.50	2.78			

# California Water Service Company - Dixon District Water Supply and Demand Analysis and Projections

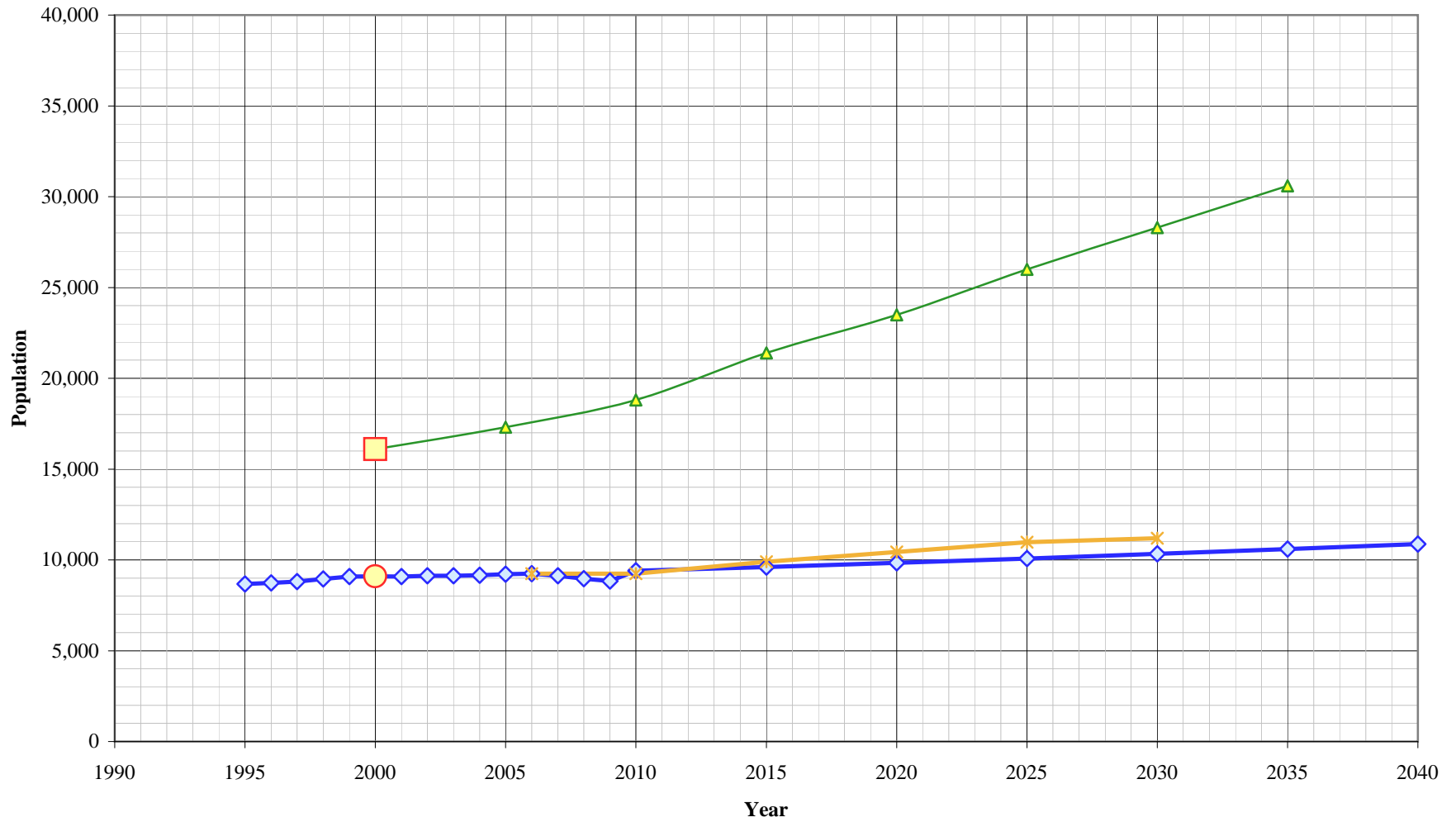
## US Census 2000 Tract Map Summary



US Census 2000 Summary			
Area	Census Tract Blocks	Population	Housing Units
District	118	9,102	2,906
City of Dixon	184	16,103	5,172
Percent District of the City		56.5%	56.2%



## Dixon District Population Estimate



**California Water Service Company - Dixon District**  
**Water Supply and Demand Analysis and Projections**

Population as of the 2000 Average Annual Services

Estimated District Population based on 2000 U.S. Census Data & Annual Service Count

District Communities Served: Approximately 50% of City of Dixon

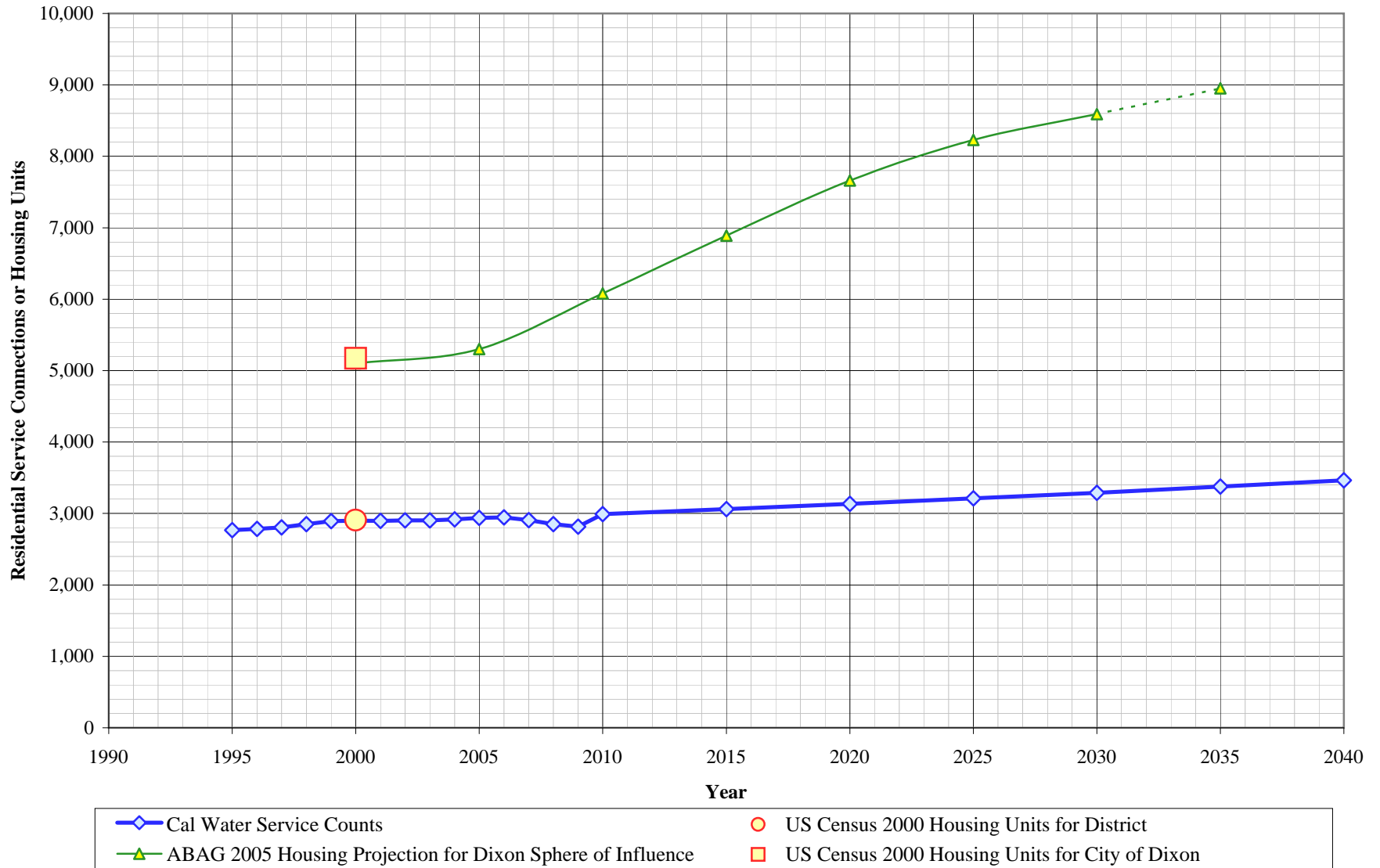
Year	Single Family Residential Services (DU)	Multi Family Residential			Flat Rate Residential Services (DU)	Total Residential Dwelling Units	Estimated District Population
		Services	Residential Units (DU)	Unit Density			
1995	2,505	17	260	15.3	0	2,765	8,680
1996	2,519	17	264	15.5	0	2,783	8,740
1997	2,539	17	266	15.6	0	2,805	8,810
1998	2,587	17	263	15.5	0	2,850	8,950
1999	2,628	17	263	15.5	0	2,891	9,080
2000	2,635	17	263	15.5	0	2,898	9,102
2001	2,634	17	262	15.4	0	2,896	9,090
2002	2,640	17	263	15.5	0	2,903	9,120
2003	2,637	17	267	15.7	0	2,904	9,120
2004	2,636	17	281	16.5	0	2,917	9,160
2005	2,657	17	280	16.5	0	2,937	9,220
2006	2,666	17	280	16.5	0	2,946	9,250
2007	2,653	16	252	15.8	0	2,905	9,120
2008	2,609	20	243	12.2	0	2,852	8,960
2009	2,582	21	234	11.1	0	2,816	8,840
2010	2,589	21	404	18.9	0	2,993	9,400
2015	2,622	23	440	19.0	0	3,061	9,610
2020	2,655	25	478	19.1	0	3,134	9,840
2025	2,690	27	521	19.2	0	3,210	10,080
2030	2,724	29	566	19.3	0	3,290	10,330
2035	2,759	32	616	19.4	0	3,375	10,600
2040	2,794	34	671	19.5	0	3,465	10,880

US Census 2000		Calculated Persons per CWS DU	Calculated Persons per US Census Housing Unit
Population	Housing Units		

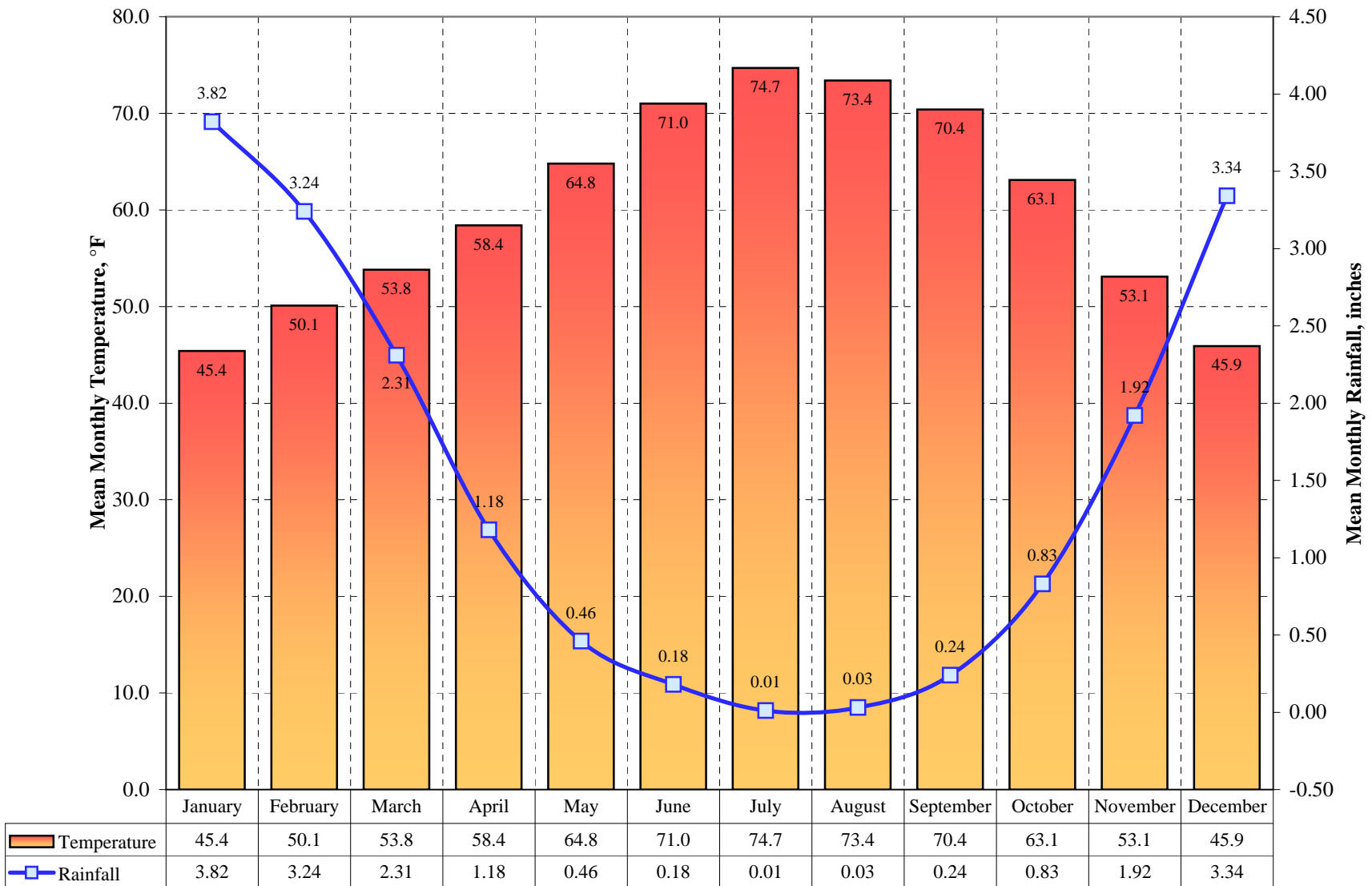
9,102	2,906	3.140	3.132
-------	-------	-------	-------

Projected

# Dixon District Housing Estimate



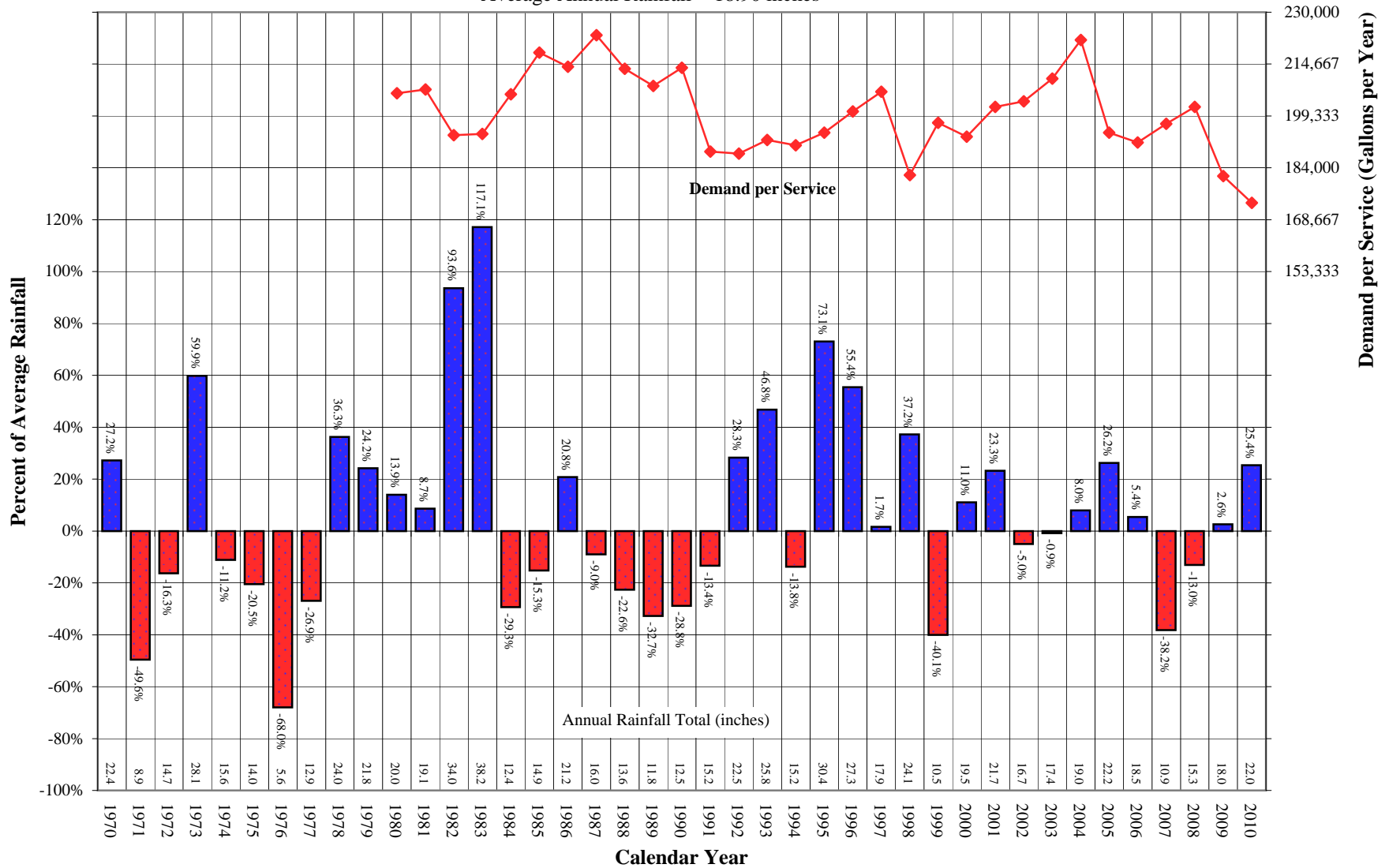
## Dixon District Average Monthly Temperature and Rainfall



# Dixon District

## Comparison of Annual Rainfall to Historical Average

Average Annual Rainfall = 18.90 inches



## California Water Service Company - Dixon

### Water Supply and Demand Analysis and Projections

#### Temperature & Rainfall History (Fahrenheit, Inches)

Year	Annual Average Temp.	Annual Average Rainfall	Rainfall Percent Variation	Demand per Service (Gal / Yr)	Percent of Average Demand	Year	Annual Average Temp.	Annual Average Rainfall	Rainfall Percent Variation	Demand per Service (Gal / Yr)	Percent of Average Demand
1970	60.8	22.35	27.2%			1995	61.4	30.41	73.1%	194,421	97.1%
1971	59.0	8.86	-49.6%			1996	61.8	27.31	55.4%	200,645	100.2%
1972	59.4	14.70	-16.3%			1997	62.3	17.86	1.7%	206,498	103.1%
1973	60.4	28.09	59.9%			1998	60.2	24.11	37.2%	181,843	90.8%
1974	60.4	15.61	-11.2%			1999	60.4	10.53	-40.1%	197,305	98.5%
1975	58.7	13.97	-20.5%			2000	61.5	19.51	11.0%	193,200	96.5%
1976	60.0	5.62	-68.0%			2001	62.6	21.66	23.3%	202,004	100.9%
1977	59.6	12.85	-26.9%			2002	61.6	16.70	-5.0%	203,633	101.7%
1978	60.5	23.95	36.3%			2003	62.0	17.42	-0.9%	210,403	105.1%
1979	60.1	21.83	24.2%			2004	61.0	18.97	8.0%	221,781	110.7%
1980	59.4	20.02	13.9%	206,049	102.9%	2005	62.4	22.18	26.2%	194,439	97.1%
1981	61.1	19.09	8.7%	207,173	103.4%	2006	61.4	18.52	5.4%	191,479	95.6%
1982	58.4	34.02	93.6%	193,651	96.7%	2007	62.9	10.86	-38.2%	197,004	98.4%
1983	60.2	38.15	117.1%	194,058	96.9%	2008	61.5	15.28	-13.0%	201,987	100.9%
1984	60.7	12.42	-29.3%	205,748	102.7%	2009	61.5	18.03	2.6%	181,561	90.7%
1985	59.0	14.89	-15.3%	218,079	108.9%	2010	60.6	22.03	25.4%	173,626	86.7%
1986	60.9	21.23	20.8%	213,916	106.8%	2011					
1987	60.5	15.99	-9.0%	223,176	111.4%	2012					
1988	61.1	13.60	-22.6%	213,251	106.5%	2013					
1989	59.2	11.82	-32.7%	208,229	104.0%	2014					
1990	60.5	12.51	-28.8%	213,607	106.7%	2015					
1991	61.1	15.22	-13.4%	188,776	94.3%	2016					
1992	62.1	22.54	28.3%	188,217	94.0%	2017					
1993	66.5	25.79	46.8%	192,218	96.0%	2018					
1994	59.3	15.15	-13.8%	190,635	95.2%	2019					

Source: Western Regional Climate Center

<http://www.wrcc.dri.edu/cgi-bin/cliMAIN.pl?ca2294>

Calendar Year	Average Water Year	Normal Water Year	Single-Dry Water Year	Multiple-Dry Water Years				
				1	2	3	4	5
	-	1,999	2008	1988	1989	1990	1991	
Demand per Service (gal/yr)	200,278	197,305	201,987	213,251	208,229	213,607	188,776	
Difference from Normal	100.0%	100.0%	102.4%	108.1%	105.5%	108.3%	95.7%	

## California Water Service Company - Dixon Water Supply and Demand Analysis and Projections

### Temperature Data

Station:(042294) DAVIS 1 WSW															
From Year=1893 To Year=2010															
	Monthly Averages			Daily Extremes				Monthly Extremes				Max. Temp.		Min. Temp.	
	Max.	Min.	Mean	High	Date	Low	Date	Highest Mean	Year	Lowest Mean	Year	>= 90 F	<= 32 F	<= 32 F	<= 0 F
	F	F	F	F	dd/yyyy or yyyymmdd	F	dd/yyyy or yyyymmdd	F	-	F	-	# Days	# Days	# Days	# Days
January	54.0	36.9	45.4	88.0	17/1893	16	15/1910	57	1,896	38	1,937	0	0	9	0
February	60.4	39.8	50.1	90.0	17/1896	21	28/1913	66	1,896	44	1,911	0	0	4	0
March	65.8	41.8	53.8	92.0	13/1896	26	4/1939	62	1,896	49	1,935	0	0	1	0
April	72.4	44.5	58.4	98.0	22/1931	25	26/1911	68	1,894	48	1,967	1	0	1	0
May	80.5	49.1	64.8	108.0	30/1910	32	6/1911	73	2,001	58	1,977	6	0	0	0
June	88.4	53.6	71.0	115.0	25/1925	34	21/1910	78	1,918	66	1,910	13	0	0	0
July	94.1	55.4	74.7	116.0	17/1925	37	22/1914	79	1,931	70	1,987	23	0	0	0
August	92.8	54.0	73.4	114.0	14/1920	37	21/1910	79	1,958	68	1,911	21	0	0	0
September	88.5	52.3	70.4	112.0	2/1950	35	13/1910	75	1,984	63	1,911	14	0	0	0
October	78.9	47.3	63.1	104.0	3/2001	26	30/1935	69	1,991	57	1,912	4	0	0	0
November	65.5	40.7	53.1	90.0	16/1895	20	14/1916	64	1,894	47	1,994	0	0	4	0
December	54.8	36.9	45.9	88.0	05/1893	12	11/1932	55	1,896	40	1,932	0	0	9	0
Annual	74.7	46.0	60.3	116.0	19250717	12	19321211	66	1,896	57	1,911	82	0	28	0

	Jan	Feb	Mar	Apr	May	Jun	Jul	Aug	Sep	Oct	Nov	Dec	Total
Monthly Average ETo Report	1.55	2.24	3.72	5.10	6.82	7.80	8.68	7.75	5.70	4.03	2.10	1.55	57.00

Source: California Irrigation Management Information System (CIMIS), <http://www.cimis.water.ca.gov/cimis/welcome.jsp>, EvapoTranspiration (Eto) Zones Map, Zone 14

**California Water Service Company - Dixon  
Water Supply and Demand Analysis and Projections**

**Precipitation Data**

Station:(042294) DAVIS 1 WSW														
From Year=1893 To Year=2010														
	Precipitation										Total Snowfall			
	Mean	High	Year	Low	Year	1 Day Max.	>=	>=	>=	>=	Mean	High	Year	
	in.	in.	-	in.	-	in.	dd/yyyy or yyyymmdd	# Days	# Days	# Days	# Days	in.	in.	-
January	3.82	13.08	1911	0	2007	4	3/1916	11	7	3	1	0	7	1916
February	3.24	11.38	1998	0	1964	3	24/1917	9	6	2	1	0	1	1976
March	2.31	8.63	1983	0	1923	2	31/1925	8	5	2	0	0	0	1896
April	1.18	6.45	1896	0	1909	3	24/1896	5	3	1	0	0	0	1910
May	0.46	2.53	1948	0	1909	2	16/1996	3	1	0	0	0	0	1910
June	0.18	1.97	1894	0	1893	1	04/1894	1	1	0	0	0	0	1910
July	0.01	0.63	1974	0	1893	0	8/1974	0	0	0	0	0	0	1910
August	0.03	0.84	2003	0	1893	1	22/2003	0	0	0	0	0	0	1948
September	0.24	4.07	1918	0	1907	3	12/1918	1	1	0	0	0	0	1948
October	0.83	7.93	1962	0	1913	4	13/1962	3	2	1	0	0	0	1948
November	1.92	6.87	1970	0	1929	2	11/1983	6	4	1	0	0	0	1911
December	3.34	11.87	1955	0	1989	3	31/2005	11	6	2	1	0	0	1911
Annual	17.57	38.15	1983	6	1976	4	19160103	58	35	12	4	0	1	1973



**California Water Service Company - Dixon**  
**Water Supply and Demand Analysis and Projections**

**Groundwater Production Facilities**

Unit No.	Design Capacity		Status
	Active	Inactive	
1-03	500		
2-01	750		
3-01	750		
4-01	650		
5-01	600		
6-01	550		
7-01	800		
8-01	500		

Total units:	8	8	0
--------------	---	---	---

Design Capacity (GPM)	5,100	5,100	0
-----------------------	-------	-------	---

Design Capacity (MGD)	7.3	7.3	0.0
-----------------------	-----	-----	-----

Design Capacity (AFY)	8,226	8,226	0
-----------------------	-------	-------	---

Notes:

1) Listed pump capacities on this worksheet represent design flowrates, actual flowrates are highly dependent on local system pressures, well characteristics, and other design criteria

2) Values in bold are estimated

Updated 1/1/2011

# Dixon District Per Capita Consumption



**California Water Service Company - Dixon District**  
**Water Supply and Demand Analysis and Projections**

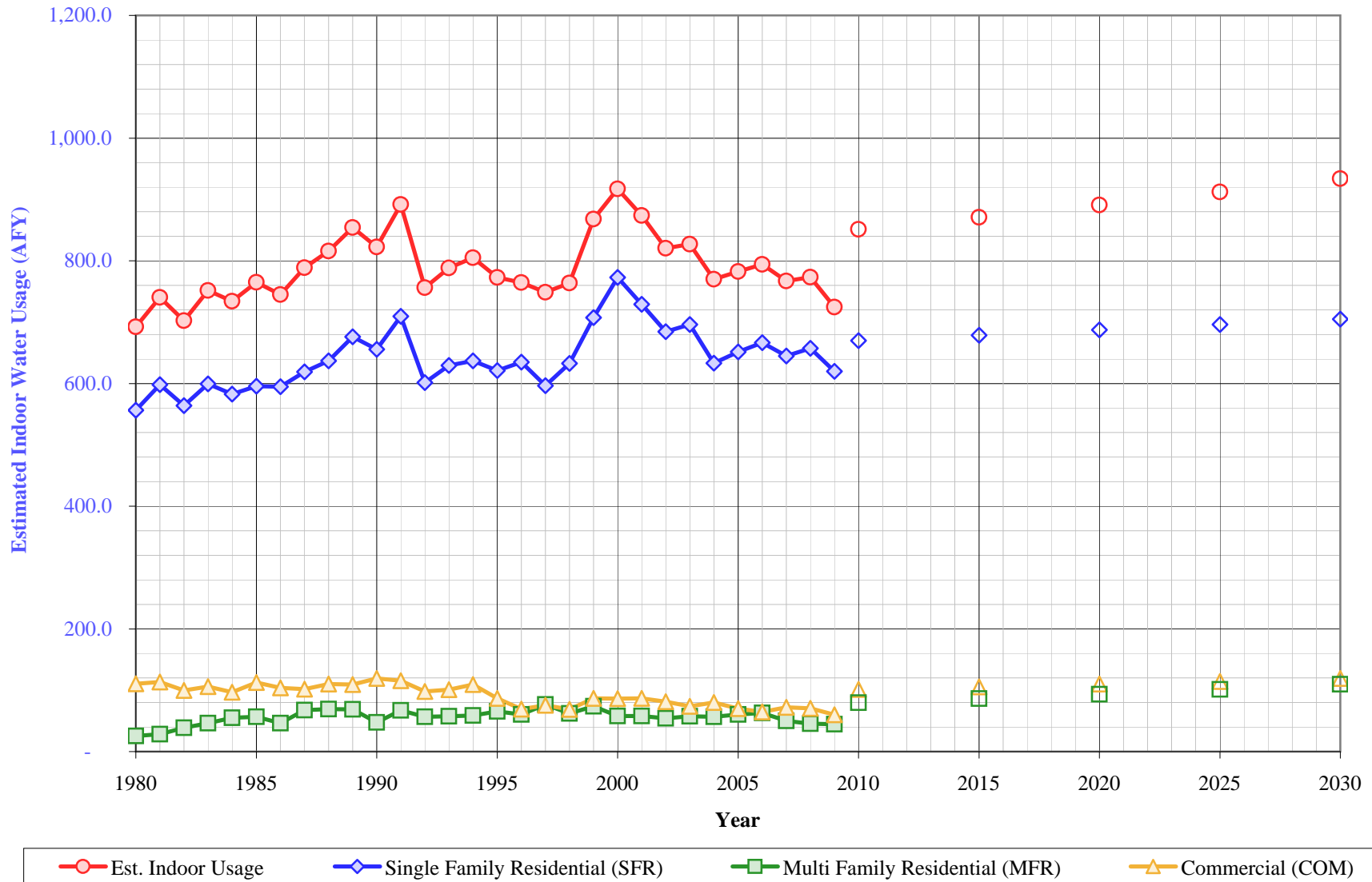
**Per Capita Water Demand Calculation**

Year	All Users			Residential Only		
	Usage (AFY)	Usage (MGY)	Gallons Per Capita Per Day	Usage (AFY)	Usage (MGY)	Gallons Per Capita Per Day
1995	1,605	523	165	1,362	444	140
1996	1,665	543	170	1,395	454	142
1997	1,725	562	175	1,459	476	148
1998	1,545	503	154	1,284	418	128
1999	1,702	555	167	1,443	470	142
2000	1,669	544	164	1,427	465	140
2001	1,743	568	171	1,475	480	145
2002	1,763	575	173	1,490	486	146
2003	1,821	593	178	1,415	461	138
2004	1,922	626	187	1,464	477	143
2005	1,698	553	164	1,387	452	134
2006	1,680	547	162	1,366	445	132
2007	1,725	562	169	1,398	456	137
2008	1,751	570	174	1,366	445	136
2009	1,558	508	157	1,180	385	119
2010	1,503	490	143	1,096	357	104
5 Yr. Avg.	1,644	536	161	1,281	417	126
10 Yr. Avg.	1,717	559	168	1,364	444	133

Five year average is from years 2006 through 2010

Ten year average is from years 2001 through 2010

## Dixon Suburban District Estimated Indoor Water Usage



**California Water Service Company - Dixon District**  
**Water Supply and Demand Analysis and Projections**

**Estimated Indoor/Outdoor Water Usage**

Year	Single Family Residential (SFR)						Multi Family Residential (MFR)						Commercial (COM)			Est. Indoor Usage AFY
	Metered Single Family Residential Indoor Use (Annualized 90% of January Total)			Indoor Flat Rate Usage (AFY)	Total SFR Indoor Usage			Multi Family Residential January Usage (CCF)	Multi Family Residential Indoor Use (Annualized 90% of January Total)			Commercial (CCF)	Commercial Indoor Use (Annualized 90% of January Total)			
	JAN (CCF)	AFY	AFY/Service		AFY	GPD/Service	%		AFY	GPD/Service	%		AFY	GPD/Service	%	
1980	22,440	556	0.28	0	556	230	48%	1,032	26	7,614	68%	4,458	111	736	65%	692
1981	24,131	598	0.30	0	598	242	49%	1,144	28	3,165	49%	4,580	114	735	74%	740
1982	22,745	564	0.28	0	564	227	51%	1,563	39	3,145	61%	4,022	100	645	70%	702
1983	24,183	600	0.30	0	600	239	53%	1,862	46	3,747	62%	4,266	106	674	71%	752
1984	23,494	582	0.29	0	582	227	46%	2,216	55	3,773	61%	3,901	97	617	56%	734
1985	24,025	596	0.30	0	596	228	47%	2,291	57	3,622	67%	4,538	113	723	64%	765
1986	23,989	595	0.30	0	595	226	47%	1,870	46	2,587	49%	4,186	104	652	61%	745
1987	24,973	619	0.31	0	619	233	47%	2,733	68	3,781	65%	4,105	102	640	58%	789
1988	25,684	637	0.32	0	637	238	49%	2,792	69	3,862	61%	4,434	110	691	63%	816
1989	27,274	676	0.34	0	676	252	54%	2,775	69	3,839	73%	4,408	109	692	58%	854
1990	26,454	656	0.33	0	656	245	51%	1,921	48	2,501	51%	4,805	119	749	63%	823
1991	28,609	709	0.36	0	709	262	62%	2,705	67	3,522	84%	4,658	115	742	70%	892
1992	24,259	601	0.30	0	601	221	50%	2,292	57	2,984	66%	3,948	98	633	61%	756
1993	25,394	630	0.32	0	630	229	52%	2,329	58	3,032	64%	4,067	101	652	60%	788
1994	25,686	637	0.32	0	637	229	50%	2,380	59	3,099	63%	4,406	109	712	73%	805
1995	25,044	621	0.31	0	621	221	49%	2,635	65	3,431	74%	3,491	87	564	60%	773
1996	25,612	635	0.32	0	635	225	49%	2,441	61	3,178	61%	2,788	69	454	50%	765
1997	24,062	597	0.30	0	597	210	44%	3,096	77	4,031	81%	3,040	75	498	57%	749
1998	25,521	633	0.32	0	633	218	53%	2,508	62	3,265	67%	2,769	69	451	57%	764
1999	28,533	707	0.35	0	707	240	53%	2,979	74	3,879	77%	3,499	87	561	64%	868
2000	31,175	773	0.39	0	773	262	58%	2,340	58	3,047	68%	3,481	86	568	66%	917
2001	29,413	729	0.36	0	729	247	53%	2,338	58	3,044	65%	3,493	87	575	68%	874
2002	27,605	684	0.34	0	684	231	49%	2,195	54	2,858	64%	3,285	81	535	63%	820
2003	28,075	696	0.35	0	696	236	52%	2,317	57	3,017	67%	2,972	74	483	57%	827
2004	25,538	633	0.32	0	633	214	46%	2,280	57	2,969	65%	3,236	80	515	63%	770
2005	26,282	652	0.32	0	652	219	50%	2,442	61	3,180	70%	2,833	70	445	61%	782
2006	26,885	667	0.33	0	667	223	52%	2,535	63	3,301	86%	2,605	65	403	55%	794
2007	26,012	645	0.32	0	645	217	48%	2,015	50	2,788	76%	2,908	72	423	54%	767
2008	26,516	657	0.33	0	657	225	51%	1,833	45	2,029	58%	2,844	71	401	54%	773
2009	24,999	620	0.31	0	620	214	56%	1,798	45	1,895	67%	2,425	60	349	55%	725
2010	---	---	---	---	670	231	51%	---	80	3,339	69%	---	102	584	60%	851
2015	---	---	---	---	679	231	51%	---	86	3,339	69%	---	106	584	60%	871
2020	---	---	---	---	687	231	51%	---	94	3,339	69%	---	110	584	60%	891
2025	---	---	---	---	696	231	51%	---	101	3,339	69%	---	114	584	60%	912
2030	---	---	---	---	705	231	51%	---	110	3,339	69%	---	119	584	60%	934
2035	---	---	---	---	714	231	51%	---	119	3,339	69%	---	124	584	60%	957
2040	---	---	---	---	723	231	51%	---	129	3,339	69%	---	129	584	60%	981

**California Water Service Company -Dixon District**

**Water Supply and Demand Analysis and Projections**

**Comparison of Projected Demand and Conservation Savings Between SBx7-7 Compliance Targets and Actual Proposed Programs**

Year	SBx7-7 Compliance Target (gpcd)	Anticipated GPCD with Proposed Programs*	Estimated Population	Undadjusted Baseline Demand (AFY)	SBx7-7 Compliance Target Demand (AFY)	Anticipated Demand with Proposed Programs (AFY)	Compliance Target Savings Requirement (AFY)	Savings Due to Proposed Programs (AFY)
2005-2009 Average	165	165	9,078	1,683	1,683	1,683	0	0
2010	165	165	9,400	1,742	1,742	1,742	0	0
2011	165	163	9,440	1,750	1,748	1,724	2	26
2012	165	160	9,480	1,757	1,754	1,699	3	58
2013	165	157	9,530	1,766	1,762	1,676	5	90
2014	165	156	9,570	1,774	1,767	1,672	6	101
2015	165	154	9,610	1,781	1,773	1,658	8	123
2016	165	154	9,660	1,790	1,781	1,666	10	124
2017	164	154	9,700	1,798	1,787	1,673	11	125
2018	164	154	9,750	1,807	1,794	1,682	13	125
2019	164	154	9,790	1,815	1,800	1,689	14	126
2020	164	154	9,840	1,824	1,808	1,697	16	126
2021	164	154	9,890	1,833	1,817	1,706	16	127
2022	164	154	9,940	1,842	1,826	1,715	16	128
2023	164	154	9,980	1,850	1,833	1,722	16	128
2024	164	154	10,030	1,859	1,843	1,730	16	129
2025	164	154	10,080	1,868	1,852	1,739	17	129
2026	164	154	10,130	1,878	1,861	1,747	17	130
2027	164	154	10,180	1,887	1,870	1,756	17	131
2028	164	154	10,230	1,896	1,879	1,765	17	131
2029	164	154	10,280	1,905	1,888	1,773	17	132
2030	164	154	10,330	1,915	1,898	1,782	17	133
2031	164	154	10,390	1,926	1,909	1,792	17	133
2032	164	154	10,440	1,935	1,918	1,801	17	134
2033	164	154	10,490	1,944	1,927	1,810	17	135
2034	164	154	10,550	1,955	1,938	1,820	17	135
2035	164	154	10,600	1,965	1,947	1,829	17	136
2036	164	154	10,650	1,974	1,956	1,837	17	137
2037	164	154	10,710	1,985	1,967	1,847	18	138
2038	164	154	10,770	1,996	1,978	1,858	18	138
2039	164	154	10,820	2,005	1,988	1,866	18	139
2040	164	154	10,880	2,017	1,999	1,877	18	140

\*Note: The district is projected to achieve its district-specific 2015 and 2020 SBx7-7 compliance target in 2015 through a combination of passive and active savings. For the purpose of this analysis it is assumed that GPCD will remain flat from 2015 through 2040.