

Water Resources Planning Department

Water Supply / Demand Analysis and Projections
for
Chico-Hamilton City District

2010



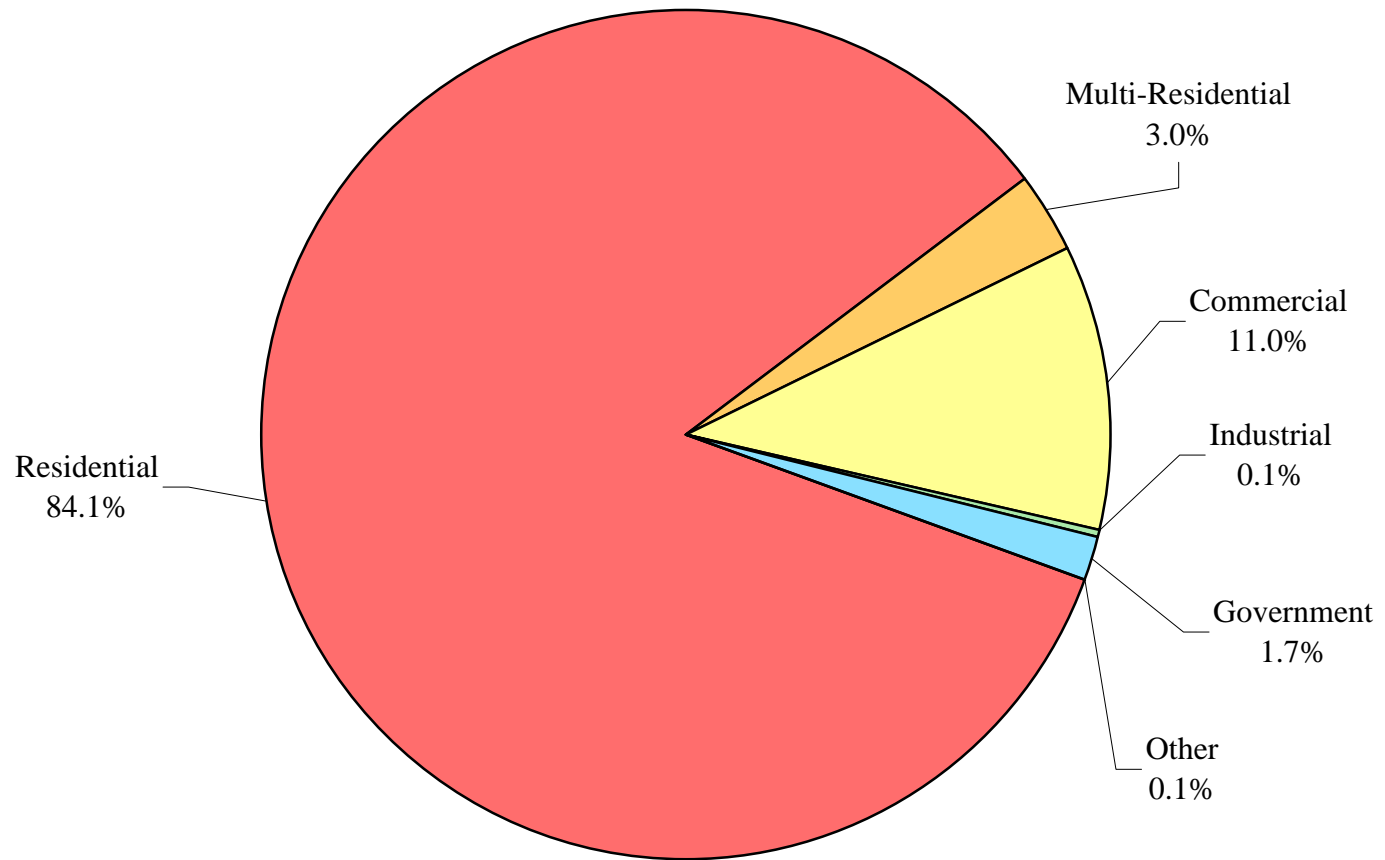
Table of Contents for Worksheets

Worksheet	Title
1	Annual Services
2	Service Growth Percentage
3	District Sales (ccf)
4	District Sales (AF)
5	Demand per Service (Gallons/Service/Year)
6	Demand per Service (Gallons per Day)
7	Percentage Change in Annual Demand
8	Percentage of Total Sales
9	Percentage of Total Demand
10	Demand Scenario 1 (Low Demand Projection)
11	Demand Scenario 2 (Average Demand Projection)
12	Demand Scenario 3 (High Demand Projection)
13	Demand Scenario 4 (Alternate Service Projection)
14	not used
15	Actual & Projected Annual Average Services
16	Actual & Projected Demand in Acre-Feet
17	Projected Annual Supply by Source
18	Historical and Projected Average Day, Maximum Day, and Peak Demands
19	Population as of the 2000 Average Annual Services
20	Temperature & Rainfall History
21	Groundwater Facilities (if available)
22	Per Capita Water Demand Calculation
23	Indoor/Outdoor Water Usage
24	SB-7 Compliance Demand Worksheet

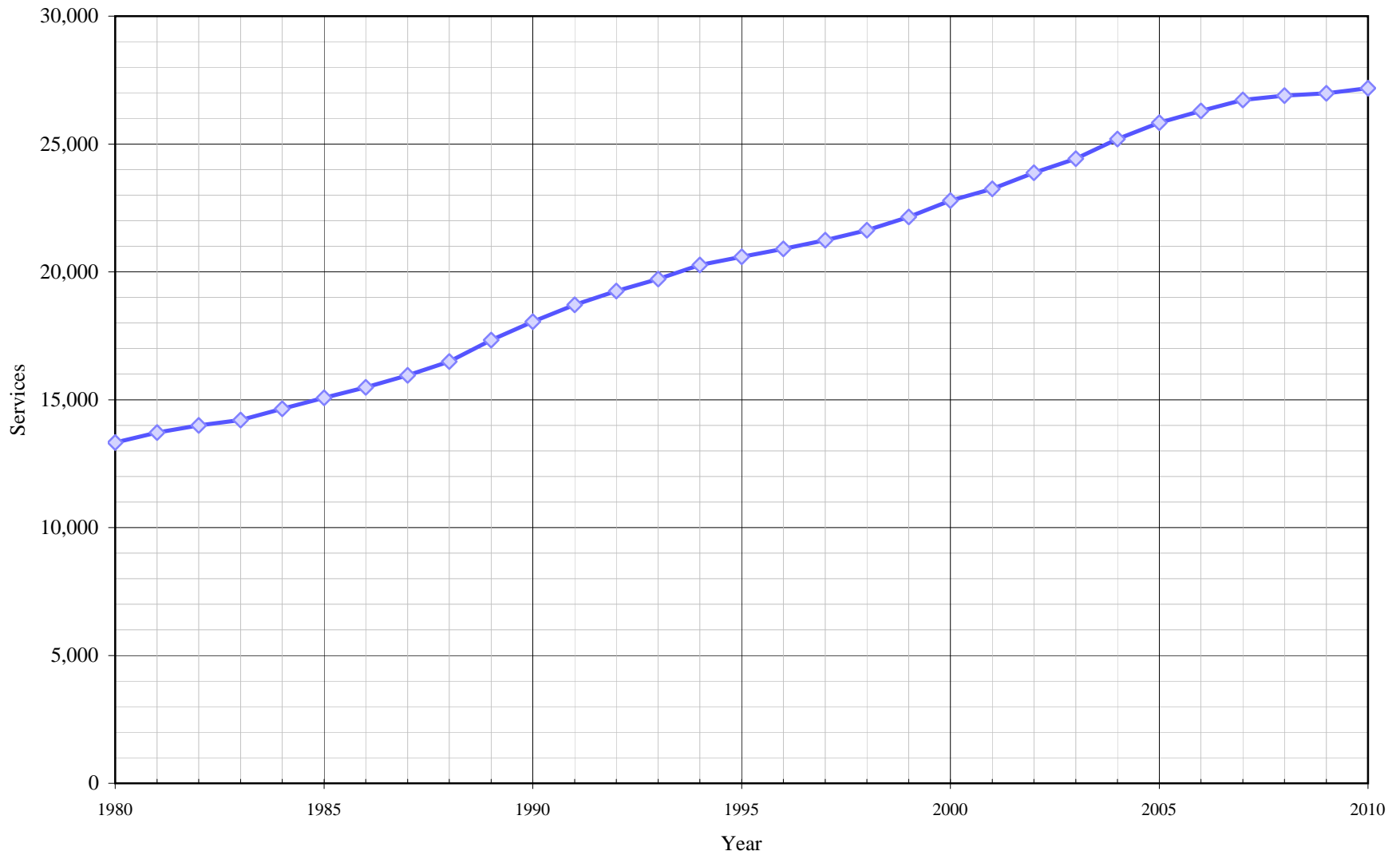
Chico-Hamilton City District

Distribution of Services

(2010)



Chico-Hamilton City District Historical Services



California Water Service Company - Chico - Hamilton City District

Worksheet 2

Water Supply and Demand Analysis and Projections

Service Growth Percentage

Year	Total	Residential Metered	Flat Rate	Multi- Residential	Multi-Res. units	Commercial	Industrial	Government	Other	Total
1981	2.41%	14.26%	1.07%	11.71%	8.24%	4.90%	6.90%	0.51%	27.27%	2.90%
1982	1.70%	9.83%	0.66%	3.49%	2.19%	4.31%	3.23%	-1.01%	0.00%	2.06%
1983	1.04%	13.78%	-0.73%	5.49%	0.83%	3.68%	0.00%	2.54%	-28.57%	1.49%
1984	2.18%	15.48%	0.05%	10.00%	8.14%	7.10%	3.13%	3.96%	20.00%	3.08%
1985	2.45%	9.35%	1.18%	10.91%	10.92%	4.79%	6.06%	2.38%	-8.33%	2.96%
1986	2.37%	5.83%	1.67%	6.89%	4.81%	4.19%	0.00%	1.40%	9.09%	2.73%
1987	2.76%	6.12%	2.06%	1.84%	2.71%	4.23%	0.00%	1.38%	58.33%	2.99%
1988	3.91%	8.14%	3.00%	3.31%	4.35%	0.47%	8.57%	1.81%	36.84%	3.37%
1989	5.85%	12.66%	4.30%	1.17%	2.13%	2.04%	5.26%	3.56%	-3.85%	5.11%
1990	4.44%	10.66%	2.92%	4.03%	5.98%	1.54%	2.50%	7.30%	88.00%	4.15%
1991	3.97%	10.35%	2.29%	12.74%	14.34%	1.51%	0.00%	0.00%	-25.53%	3.65%
1992	3.27%	12.72%	0.59%	2.95%	-6.04%	0.82%	-4.88%	7.20%	-14.29%	2.91%
1993	2.67%	13.28%	-0.71%	0.48%	0.51%	1.55%	-2.56%	1.12%	-3.33%	2.42%
1994	2.99%	13.02%	-0.65%	0.00%	-0.20%	2.29%	2.63%	0.37%	0.00%	2.79%
1995	1.83%	8.14%	-0.78%	-0.48%	0.41%	0.68%	-2.56%	-1.47%	-10.34%	1.55%
1996	1.71%	7.32%	-0.82%	-0.48%	0.06%	1.06%	-2.63%	0.37%	0.00%	1.54%
1997	1.77%	6.57%	-0.57%	0.00%	0.14%	0.52%	0.00%	3.35%	11.54%	1.59%
1998	2.02%	6.88%	-0.51%	0.72%	1.33%	0.94%	2.70%	0.00%	3.45%	1.83%
1999	2.76%	8.31%	-0.35%	-0.24%	-0.51%	1.07%	-2.63%	-0.36%	10.00%	2.44%
2000	3.15%	8.86%	-0.32%	0.00%	1.03%	1.40%	0.00%	6.14%	0.00%	2.89%
2001	2.21%	5.83%	-0.20%	0.72%	1.60%	-0.47%	-5.41%	17.01%	9.09%	2.02%
2002	2.89%	6.71%	0.20%	1.42%	4.32%	1.89%	0.00%	0.00%	0.00%	2.69%
2003	2.40%	6.77%	-0.88%	0.00%	0.43%	1.92%	2.86%	0.00%	16.67%	2.28%
2004	3.49%	8.85%	-0.85%	-0.47%		1.98%	0.00%	-1.16%	11.90%	3.17%
2005	2.59%	6.02%	-0.46%	0.00%		2.62%	-2.78%	0.59%	6.38%	2.52%
2006	1.93%	4.96%	-0.93%	-0.47%		1.34%	2.86%	-0.29%	0.00%	1.79%
2007	1.74%	5.20%	-1.72%	-0.24%	-2.37%	1.53%	0.00%	-0.29%	-4.00%	1.64%
2008	0.73%	2.52%	-1.20%	39.95%	1.31%	-4.95%	-16.67%	2.65%	-14.58%	0.62%
2009	-0.14%	6.16%	-7.15%	29.39%	5.19%	-3.97%	-16.67%	27.51%	-29.27%	0.36%
2010										
5 Yr. Avg.	1.37%	4.97%	-2.29%	13.73%	1.38%	-0.69%	-6.65%	6.03%	-8.29%	1.39%
10 Yr. Avg.	2.10%	6.19%	-1.35%	7.03%	1.64%	0.33%	-3.58%	5.22%	-0.38%	2.00%

Five Year Average is from 2005 through 2009.

Ten Year Average is from 2000 through 2009.

California Water Service Company - Chico - Hamilton City District
Water Supply and Demand Analysis and Projections
Average Annual Services

Year	Total	Residential Metered	Flat Rate	Multi- Residential	Multi-Res. units	Commercial	Industrial	Government	Other	Total	Annual Change
1980	11,051	1,122	9,929	205	4,602	1,837	29	198	11	13,331	
1981	11,317	1,282	10,035	229	4,981	1,927	31	199	14	13,717	386
1982	11,509	1,408	10,101	237	5,090	2,010	32	197	14	13,999	282
1983	11,629	1,602	10,027	250	5,132	2,084	32	202	10	14,207	208
1984	11,882	1,850	10,032	275	5,550	2,232	33	210	12	14,644	437
1985	12,173	2,023	10,150	305	6,156	2,339	35	215	11	15,078	434
1986	12,461	2,141	10,320	326	6,452	2,437	35	218	12	15,489	411
1987	12,805	2,272	10,533	332	6,627	2,540	35	221	19	15,952	463
1988	13,306	2,457	10,849	343	6,915	2,552	38	225	26	16,490	538
1989	14,084	2,768	11,316	347	7,062	2,604	40	233	25	17,333	843
1990	14,709	3,063	11,646	361	7,484	2,644	41	250	47	18,052	719
1991	15,293	3,380	11,913	407	8,557	2,684	41	250	35	18,710	658
1992	15,793	3,810	11,983	419	8,040	2,706	39	268	30	19,255	545
1993	16,214	4,316	11,898	421	8,081	2,748	38	271	29	19,721	466
1994	16,699	4,878	11,821	421	8,065	2,811	39	272	29	20,271	550
1995	17,004	5,275	11,729	419	8,098	2,830	38	268	26	20,585	314
1996	17,294	5,661	11,633	417	8,103	2,860	37	269	26	20,903	318
1997	17,600	6,033	11,567	417	8,114	2,875	37	278	29	21,236	333
1998	17,956	6,448	11,508	420	8,222	2,902	38	278	30	21,624	388
1999	18,452	6,984	11,468	419	8,180	2,933	37	277	33	22,151	527
2000	19,034	7,603	11,431	419	8,264	2,974	37	294	33	22,791	640
2001	19,454	8,046	11,408	422	8,396	2,960	35	344	36	23,251	460
2002	20,017	8,586	11,431	428	8,759	3,016	35	344	36	23,876	625
2003	20,497	9,167	11,330	428	8,797	3,074	36	344	42	24,421	545
2004	21,212	9,978	11,234	426	8,835	3,135	36	340	47	25,196	775
2005	21,761	10,579	11,182	426	8,872	3,217	35	342	50	25,831	635
2006	22,182	11,104	11,078	424	8,910	3,260	36	341	50	26,293	462
2007	22,568	11,681	10,887	423	8,699	3,310	36	340	48	26,725	432
2008	22,732	11,976	10,757	592	8,813	3,146	30	349	41	26,890	165
2009	22,701	12,714	9,987	766	9,270	3,021	25	445	29	26,987	97
2010	22,856	14,292	8,564	827		2,999	23	459	23	27,187	200
5 Yr Avg.	22,389	11,611	10,778	526	8,913	3,191	32	363	44	26,545	358
10 Yr Avg.	21,216	10,143	11,072	475	8,761	3,111	34	348	41	25,226	484
20 Yr. Avg.	18,959	7,564	11,395	444	8,428	2,955	36	308	36	22,738	483

Five Year Average is from 2005 through 2009.

Ten Year Average is from 2000 through 2009.

Twenty Year Average = 1990 through 2009.

California Water Service Company - Chico - Hamilton City District
Water Supply and Demand Analysis and Projections
Sales (ccf)

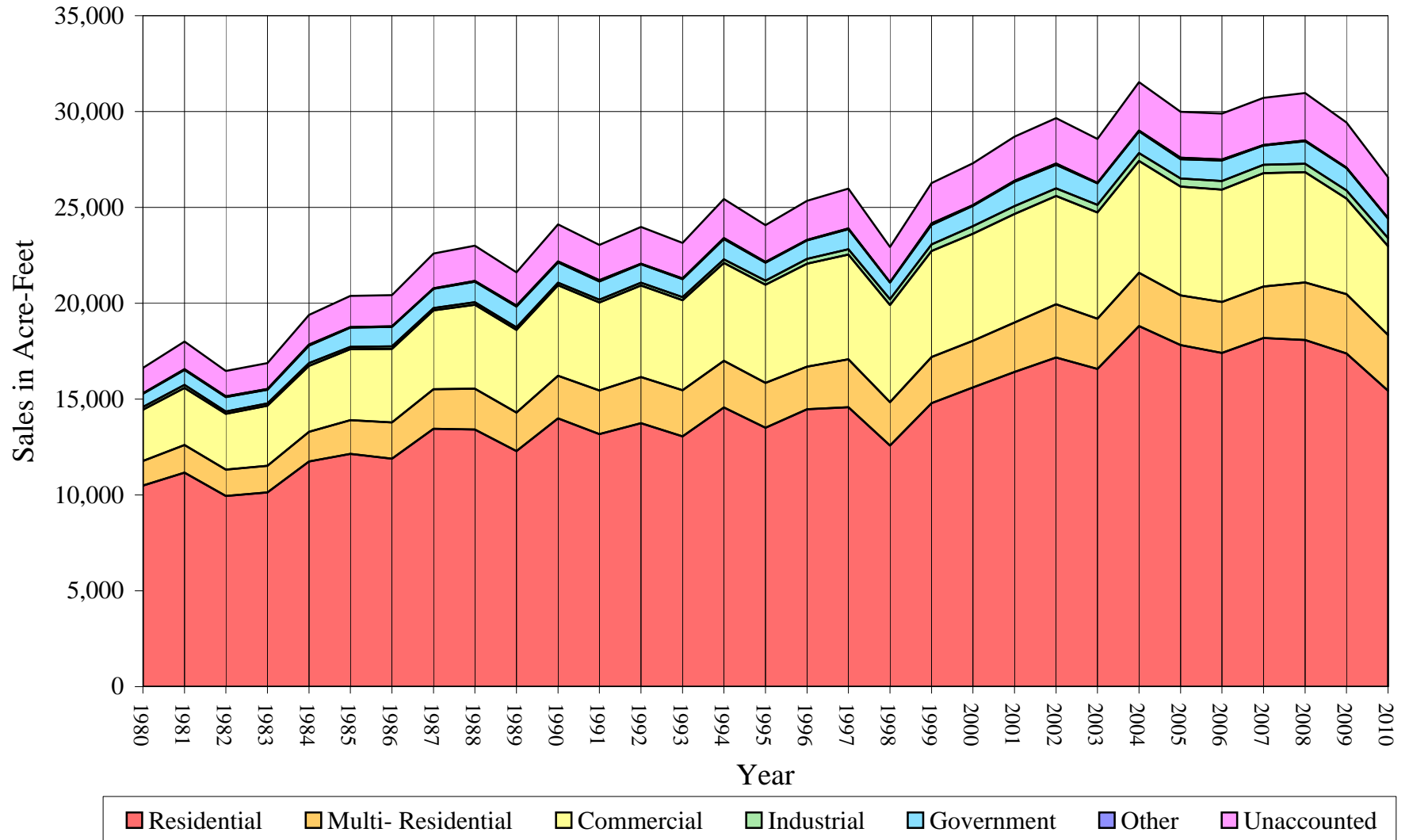
Worksheet 3

Year	Residential			Multi-					Unaccounted	Total(ccf)	Total(ccf)	Total(kgal)
	Total	Metered	Flat Rate	Residential	Commercial	Industrial	Government	Other	Water	Sales	Production	Production
1980	4,568,166	313,817	4,254,349	560,705	1,165,682	58,110	300,136	12,689	579,608	6,665,488	7,245,095	5,419,708
1981	4,860,687	366,252	4,494,435	630,903	1,294,869	71,757	340,817	15,724	627,370	7,214,757	7,842,127	5,866,319
1982	4,330,327	358,784	3,971,543	604,744	1,263,259	53,485	327,600	18,027	573,691	6,597,442	7,171,132	5,364,380
1983	4,412,749	389,793	4,022,956	606,834	1,362,001	53,397	311,885	17,174	588,177	6,764,040	7,352,217	5,499,841
1984	5,118,075	500,193	4,617,882	670,498	1,502,405	60,981	399,022	19,103	675,659	7,770,084	8,445,743	6,317,855
1985	5,289,242	536,491	4,752,751	765,789	1,611,466	52,967	437,949	12,335	710,413	8,169,748	8,880,161	6,642,822
1986	5,182,081	548,945	4,633,136	819,197	1,676,087	53,687	446,189	8,408	711,796	8,185,649	8,897,444	6,655,751
1987	5,862,186	617,295	5,244,891	894,178	1,795,643	48,334	437,689	16,397	787,342	9,054,427	9,841,769	7,362,155
1988	5,843,145	663,685	5,179,460	925,822	1,910,517	56,103	466,897	15,131	801,532	9,217,615	10,019,147	7,494,843
1989	5,352,258	667,658	4,684,600	877,924	1,877,944	56,545	470,748	25,444	753,119	8,660,863	9,413,982	7,042,148
1990	6,096,027	786,292	5,309,735	968,755	2,053,958	57,927	464,174	23,647	840,390	9,664,488	10,504,878	7,858,195
1991	5,739,755	811,876	4,927,879	991,828	1,999,738	60,138	416,358	26,667	802,999	9,234,484	10,037,483	7,508,559
1992	5,984,691	941,820	5,042,871	1,048,569	2,084,312	59,791	423,969	11,562	835,904	9,612,894	10,448,798	7,816,244
1993	5,688,997	1,050,879	4,638,118	1,045,856	2,047,643	66,683	409,134	20,666	806,868	9,278,979	10,085,847	7,544,738
1994	6,343,258	1,304,507	5,038,751	1,061,275	2,220,775	84,670	462,621	19,456	886,266	10,192,055	11,078,321	8,287,160
1995	5,881,240	1,349,515	4,531,725	1,021,874	2,230,639	89,377	411,344	14,069	839,004	9,648,543	10,487,546	7,845,230
1996	6,304,931	1,534,420	4,770,511	968,188	2,339,064	106,007	422,951	13,162	882,983	10,154,303	11,037,286	8,256,464
1997	6,351,168	1,677,570	4,673,598	1,087,211	2,378,330	122,213	457,493	15,128	905,352	10,411,543	11,316,895	8,465,626
1998	5,477,715	1,549,401	3,928,314	985,062	2,207,178	135,221	378,627	6,188	799,130	9,189,991	9,989,121	7,472,382
1999	6,442,202	1,953,010	4,489,192	1,050,399	2,407,089	151,887	439,614	36,257	915,430	10,527,448	11,442,878	8,559,868
2000	6,799,041	2,176,434	4,622,607	1,062,409	2,429,166	170,175	462,234	18,077	951,400	10,941,102	11,892,502	8,896,210
2001	7,147,887	2,367,731	4,780,156	1,124,711	2,467,424	177,040	555,523	24,692	999,763	11,497,277	12,497,040	9,348,436
2002	7,481,661	2,600,433	4,881,228	1,205,452	2,462,745	170,113	535,335	31,189	1,033,608	11,886,495	12,920,103	9,664,909
2003	7,217,277	2,619,281	4,597,996	1,145,394	2,414,777	169,716	488,059	15,570	995,721	11,450,793	12,446,514	9,310,640
2004	8,191,994	2,962,217	5,229,777	1,212,055	2,539,755	177,333	495,315	18,771	1,098,715	12,635,223	13,733,938	10,273,700
2005	7,758,437	2,904,269	4,854,168	1,130,263	2,475,768	182,648	435,698	36,362	1,045,146	12,019,176	13,064,322	9,772,792
2006	7,581,672	3,130,080	4,451,592	1,161,854	2,551,854	195,865	463,506	26,617	1,041,858	11,981,368	13,023,226	9,742,050
2007	7,923,286	3,447,297	4,475,989	1,170,179	2,572,689	192,653	435,517	15,964	1,070,460	12,310,288	13,380,748	10,009,495
2008	7,874,391	3,492,227	4,382,164	1,311,948	2,505,177	188,981	516,190	14,508	1,079,234	12,411,195	13,490,430	10,091,543
2009	7,570,603	3,427,175	4,143,428	1,347,029	2,174,533	182,378	510,987	7,208	1,025,455	11,792,738	12,818,193	9,588,675
2010	6,722,712	3,464,163	3,258,549	1,267,871	2,020,434	183,637	440,321	13,697	925,971	10,648,672	11,574,643	8,658,435
5 Yr Avg.	7,741,678	3,280,210	4,461,468	1,224,255	2,456,004	188,505	472,380	20,132	1,052,431	12,102,953	13,155,384	9,840,911
10 Yr Avg.	7,554,625	2,912,714	4,641,911	1,187,129	2,459,389	180,690	489,836	20,896	1,034,136	11,892,566	12,926,702	9,669,845

Five year average = 2005 through 2009.

Ten year average = 2000 through 2009.

Chico-Hamilton City District Historical Sales



California Water Service Company - Chico - Hamilton City District
Water Supply and Demand Analysis and Projections
Sales (AF)

Worksheet 4

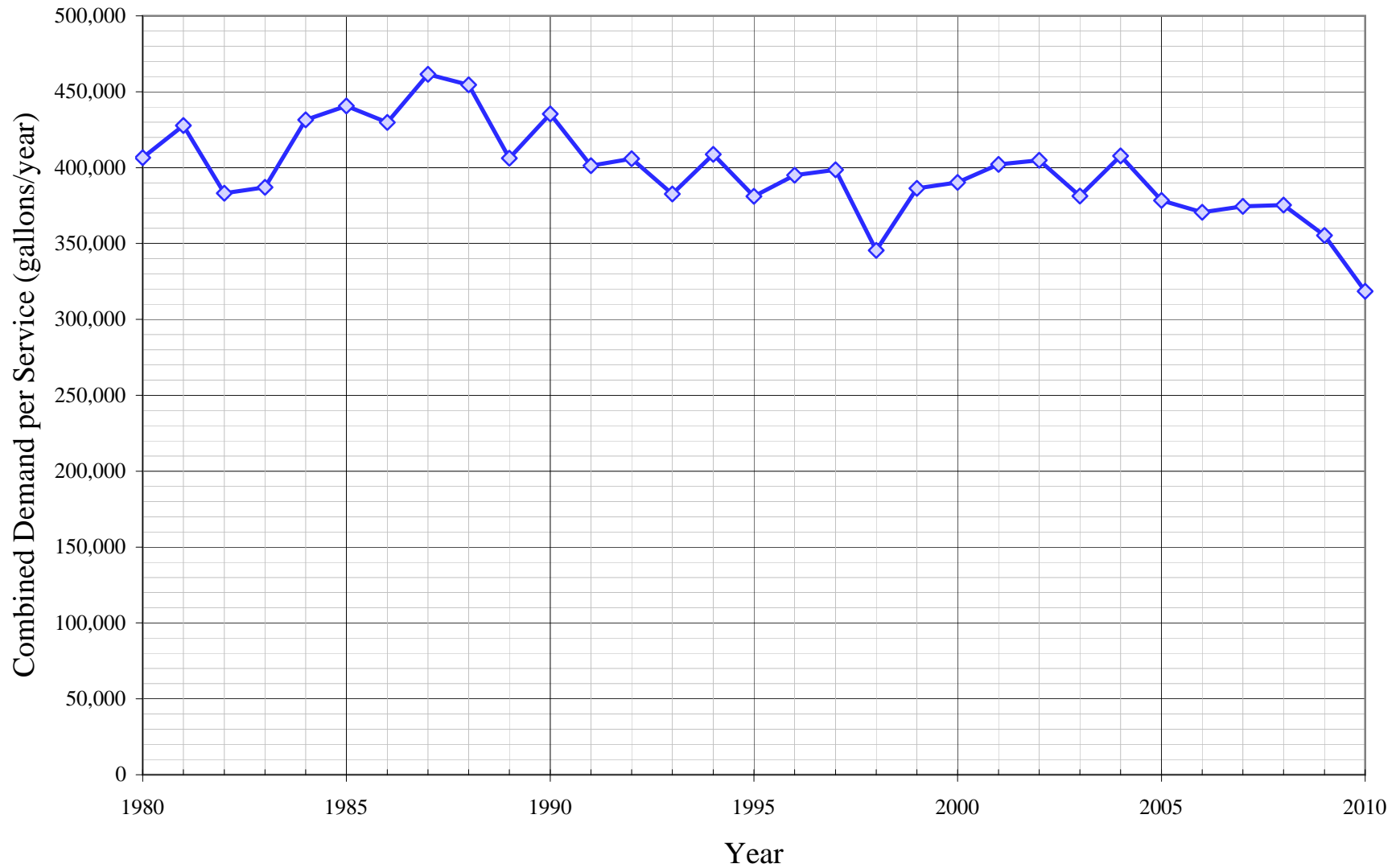
Year	Residential			Multi-					Unaccounted	Total(AF)	Total(AF)	Total(Mgal)
	Total	Metered	Flat Rate	Residential	Commercial	Industrial	Government	Other	Water	Sales	Production	Production
1980	10,487	720	9,767	1,287	2,676	133	689	29	1,331	15,302	16,632	5,420
1981	11,159	841	10,318	1,448	2,973	165	782	36	1,440	16,563	18,003	5,866
1982	9,941	824	9,117	1,388	2,900	123	752	41	1,317	15,146	16,463	5,364
1983	10,130	895	9,235	1,393	3,127	123	716	39	1,350	15,528	16,878	5,500
1984	11,749	1,148	10,601	1,539	3,449	140	916	44	1,551	17,838	19,389	6,318
1985	12,142	1,232	10,911	1,758	3,699	122	1,005	28	1,631	18,755	20,386	6,643
1986	11,896	1,260	10,636	1,881	3,848	123	1,024	19	1,634	18,792	20,426	6,656
1987	13,458	1,417	12,041	2,053	4,122	111	1,005	38	1,807	20,786	22,594	7,362
1988	13,414	1,524	11,890	2,125	4,386	129	1,072	35	1,840	21,161	23,001	7,495
1989	12,287	1,533	10,754	2,015	4,311	130	1,081	58	1,729	19,883	21,612	7,042
1990	13,995	1,805	12,189	2,224	4,715	133	1,066	54	1,929	22,187	24,116	7,858
1991	13,177	1,864	11,313	2,277	4,591	138	956	61	1,843	21,199	23,043	7,509
1992	13,739	2,162	11,577	2,407	4,785	137	973	27	1,919	22,068	23,987	7,816
1993	13,060	2,412	10,648	2,401	4,701	153	939	47	1,852	21,302	23,154	7,545
1994	14,562	2,995	11,567	2,436	5,098	194	1,062	45	2,035	23,398	25,432	8,287
1995	13,501	3,098	10,403	2,346	5,121	205	944	32	1,926	22,150	24,076	7,845
1996	14,474	3,523	10,952	2,223	5,370	243	971	30	2,027	23,311	25,338	8,256
1997	14,580	3,851	10,729	2,496	5,460	281	1,050	35	2,078	23,902	25,980	8,466
1998	12,575	3,557	9,018	2,261	5,067	310	869	14	1,835	21,097	22,932	7,472
1999	14,789	4,483	10,306	2,411	5,526	349	1,009	83	2,102	24,168	26,269	8,560
2000	15,608	4,996	10,612	2,439	5,577	391	1,061	41	2,184	25,117	27,301	8,896
2001	16,409	5,436	10,974	2,582	5,664	406	1,275	57	2,295	26,394	28,689	9,348
2002	17,176	5,970	11,206	2,767	5,654	391	1,229	72	2,373	27,288	29,660	9,665
2003	16,569	6,013	10,556	2,629	5,544	390	1,120	36	2,286	26,287	28,573	9,311
2004	18,806	6,800	12,006	2,782	5,830	407	1,137	43	2,522	29,006	31,529	10,274
2005	17,811	6,667	11,144	2,595	5,684	419	1,000	83	2,399	27,592	29,992	9,773
2006	17,405	7,186	10,219	2,667	5,858	450	1,064	61	2,392	27,505	29,897	9,742
2007	18,189	7,914	10,275	2,686	5,906	442	1,000	37	2,457	28,261	30,718	10,009
2008	18,077	8,017	10,060	3,012	5,751	434	1,185	33	2,478	28,492	30,970	10,092
2009	17,380	7,868	9,512	3,092	4,992	419	1,173	17	2,354	27,072	29,427	9,589
2010	15,433	7,953	7,481	2,911	4,638	422	1,011	31	2,126	24,446	26,572	8,658
5 Yr Avg.	17,772	7,530	10,242	2,811	5,638	433	1,084	46	2,416	27,785	30,201	9,841
10 Yr Avg.	17,343	6,687	10,656	2,725	5,646	415	1,125	48	2,374	27,302	29,676	9,670

Five year average = 2005 through 2009.

Ten year average = 2000 through 2009.

Flat Rate Residential Sales estimated by setting "Unaccounted for Water" at 8.0% of total production.

Chico-Hamilton City District Historical Demand per Service



California Water Service Company - Chico - Hamilton City District

Worksheet 5

Water Supply and Demand Analysis and Projections

Demand per Service (Gallons per Year)

Year	Residential			Multi-Residential		Commercial	Industrial	Government	Total Other	Unaccounted/ Total Services	Combined Demand/Service
	Total	Metered	Flat Rate	(service)	(unit)						
1980	309,223	209,226	320,523	2,046,032	91,142	474,682	1,498,941	1,133,926	862,912	32,524	406,549
1981	321,291	213,709	335,034	2,060,909	94,750	502,662	1,731,547	1,281,150	840,169	34,213	427,668
1982	281,459	190,617	294,121	1,908,776	88,876	470,141	1,250,299	1,243,969	963,224	30,656	383,197
1983	283,856	182,013	300,128	1,815,774	88,454	488,890	1,248,242	1,154,981	1,284,705	30,970	387,122
1984	322,217	202,254	344,340	1,823,881	90,372	503,529	1,382,332	1,421,377	1,190,836	34,514	431,430
1985	325,033	198,380	350,276	1,878,197	93,056	515,374	1,132,059	1,523,761	838,838	35,245	440,564
1986	311,088	191,798	335,836	1,879,761	94,979	514,485	1,147,448	1,531,067	524,135	34,377	429,708
1987	342,462	203,243	372,491	2,014,734	100,934	528,832	1,033,038	1,481,512	645,569	36,922	461,519
1988	328,497	202,064	357,130	2,019,134	100,154	560,018	1,104,420	1,552,281	435,337	36,361	454,508
1989	284,278	180,435	309,679	1,892,602	92,995	539,478	1,057,465	1,511,348	761,337	32,503	406,286
1990	310,024	192,030	341,058	2,007,421	96,830	581,115	1,056,888	1,388,905	376,366	34,825	435,309
1991	280,758	179,682	309,436	1,822,946	86,705	557,343	1,097,228	1,245,830	569,952	32,105	401,313
1992	283,471	184,916	314,807	1,872,039	97,560	576,191	1,146,840	1,183,399	288,299	32,475	405,933
1993	262,469	182,139	291,608	1,858,325	96,814	557,403	1,312,693	1,129,349	533,077	30,606	382,574
1994	284,154	200,049	318,860	1,885,722	98,436	590,984	1,624,040	1,272,296	501,866	32,705	408,819
1995	258,732	191,376	289,024	1,824,379	94,396	589,623	1,759,438	1,148,159	404,782	30,489	381,114
1996	272,720	202,760	306,764	1,736,822	89,381	611,798	2,143,209	1,176,169	378,687	31,599	394,989
1997	269,943	208,008	302,247	1,950,337	100,233	618,822	2,470,856	1,231,038	390,225	31,892	398,645
1998	228,203	179,751	255,351	1,754,470	89,623	568,947	2,661,904	1,018,823	154,298	27,645	345,560
1999	261,170	209,186	292,828	1,875,306	96,058	613,920	3,070,794	1,187,199	821,882	30,915	386,433
2000	267,208	214,137	302,506	1,896,747	96,169	611,010	3,440,534	1,176,106	409,774	31,227	390,339
2001	274,853	220,132	313,447	1,993,702	100,208	623,568	3,783,861	1,208,024	513,081	32,165	402,066
2002	279,596	226,562	319,431	2,106,871	102,950	610,829	3,635,811	1,164,123	648,083	32,384	404,796
2003	263,399	213,740	303,578	2,001,903		587,631	3,526,566	1,061,318	277,314	30,500	381,255
2004	288,895	222,078	348,242	2,128,357		606,019	3,684,842	1,089,769	298,759	32,620	407,751
2005	266,703	205,364	324,734	1,984,731		575,693	3,903,720	952,996	544,013	30,267	378,336
2006	255,680	210,867	300,598	2,049,828	97,545	585,558	4,069,922	1,016,794	398,218	29,642	370,519
2007	262,630	220,765	307,548	2,069,397	100,627	581,421	4,003,179	958,204	248,790	29,963	374,537
2008	259,123	218,138	304,754	1,657,779	111,359	595,678	4,712,254	1,106,410	264,701	30,023	375,286
2009	249,469	201,644	310,353	1,315,467	108,700	538,452	5,457,129	858,977	185,930	28,425	355,307
2010	220,027	181,316	284,629	1,146,836		503,965	5,972,610	717,610	445,481	25,478	318,477
5 Yr Avg.	258,721	211,356	309,597	1,815,440	104,558	575,360	4,429,241	978,676	328,330	29,664	370,797
10 Yr Avg.	266,756	215,343	313,519	1,920,478	102,508	591,586	4,021,782	1,059,272	378,866	30,722	384,019

Five year average = 2005 through 2009.

Ten year average = 2000 through 2009.

California Water Service Company - Chico - Hamilton City District

Worksheet 6

Water Supply and Demand Analysis and Projections

Demand per Service (Gallons per Day)

Year	Residential			Multi-Residential		Commercial	Industrial	Government	Total Other	Unaccounted/ Total Services	Combined Demand/Service
	Total	Metered	Flat Rate	(service)	(unit)						
1980	847	573	878	5,606	250	1,300	4,107	3,107	2,364	89	1,114
1981	880	586	918	5,646	260	1,377	4,744	3,510	2,302	94	1,172
1982	771	522	806	5,230	243	1,288	3,425	3,408	2,639	84	1,050
1983	778	499	822	4,975	242	1,339	3,420	3,164	3,520	85	1,061
1984	883	554	943	4,997	248	1,380	3,787	3,894	3,263	95	1,182
1985	891	544	960	5,146	255	1,412	3,102	4,175	2,298	97	1,207
1986	852	525	920	5,150	260	1,410	3,144	4,195	1,436	94	1,177
1987	938	557	1,021	5,520	277	1,449	2,830	4,059	1,769	101	1,264
1988	900	554	978	5,532	274	1,534	3,026	4,253	1,193	100	1,245
1989	779	494	848	5,185	255	1,478	2,897	4,141	2,086	89	1,113
1990	849	526	934	5,500	265	1,592	2,896	3,805	1,031	95	1,193
1991	769	492	848	4,994	238	1,527	3,006	3,413	1,562	88	1,099
1992	777	507	862	5,129	267	1,579	3,142	3,242	790	89	1,112
1993	719	499	799	5,091	265	1,527	3,596	3,094	1,460	84	1,048
1994	779	548	874	5,166	270	1,619	4,449	3,486	1,375	90	1,120
1995	709	524	792	4,998	259	1,615	4,820	3,146	1,109	84	1,044
1996	747	556	840	4,758	245	1,676	5,872	3,222	1,037	87	1,082
1997	740	570	828	5,343	275	1,695	6,769	3,373	1,069	87	1,092
1998	625	492	700	4,807	246	1,559	7,293	2,791	423	76	947
1999	716	573	802	5,138	263	1,682	8,413	3,253	2,252	85	1,059
2000	732	587	829	5,197	263	1,674	9,426	3,222	1,123	86	1,069
2001	753	603	859	5,462	275	1,708	10,367	3,310	1,406	88	1,102
2002	766	621	875	5,772	282	1,674	9,961	3,189	1,776	89	1,109
2003	722	586	832	5,485		1,610	9,662	2,908	760	84	1,045
2004	791	608	954	5,831		1,660	10,095	2,986	819	89	1,117
2005	731	563	890	5,438		1,577	10,695	2,611	1,490	83	1,037
2006	700	578	824	5,616	267	1,604	11,150	2,786	1,091	81	1,015
2007	720	605	843	5,670	276	1,593	10,968	2,625	682	82	1,026
2008	710	598	835	4,542	305	1,632	12,910	3,031	725	82	1,028
2009	683	552	850	3,604	298	1,475	14,951	2,353	509	78	973
2010	603	497	780	3,142	0	1,381	16,363	1,966	1,220	70	873
5 Yr Avg.	709	579	848	4,974	286	1,576	12,135	2,681	900	81	1,016
10 Yr Avg.	731	590	859	5,262	281	1,621	11,019	2,902	1,038	84	1,052

Five year average = 2005 through 2009.

Ten year average = 2000 through 2009.

California Water Service Company - Chico - Hamilton City District
Water Supply and Demand Analysis and Projections
Percentage Change in Annual Demand

Worksheet 7

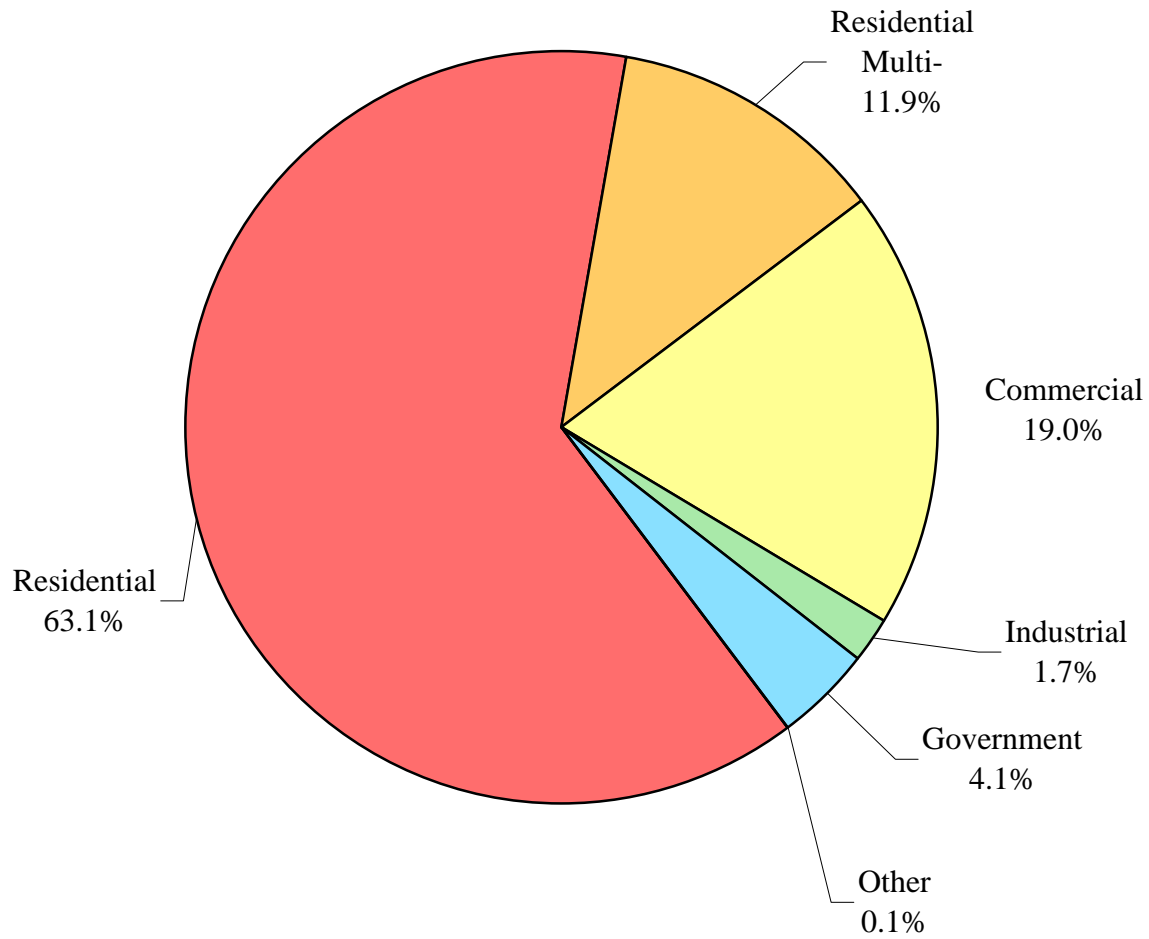
Year	Residential			Multi-					Unaccounted Water	Total
	Total S.F.	Metered	Flat Rate	Residential	Commercial	Industrial	Government	Other		
1981	6.40%	16.71%	5.64%	12.52%	11.08%	23.48%	13.55%	23.92%	8.24%	8.24%
1982	-10.91%	-2.04%	-11.63%	-4.15%	-2.44%	-25.46%	-3.88%	14.65%	-8.56%	-8.56%
1983	1.90%	8.64%	1.29%	0.35%	7.82%	-0.16%	-4.80%	-4.73%	2.53%	2.53%
1984	15.98%	28.32%	14.79%	10.49%	10.31%	14.20%	27.94%	11.23%	14.87%	14.87%
1985	3.34%	7.26%	2.92%	14.21%	7.26%	-13.14%	9.76%	-35.43%	5.14%	5.14%
1986	-2.03%	2.32%	-2.52%	6.97%	4.01%	1.36%	1.88%	-31.84%	0.19%	0.19%
1987	13.12%	12.45%	13.20%	9.15%	7.13%	-9.97%	-1.91%	95.02%	10.61%	10.61%
1988	-0.32%	7.52%	-1.25%	3.54%	6.40%	16.07%	6.67%	-7.72%	1.80%	1.80%
1989	-8.40%	0.60%	-9.55%	-5.17%	-1.70%	0.79%	0.82%	68.16%	-6.04%	-6.04%
1990	13.90%	17.77%	13.34%	10.35%	9.37%	2.44%	-1.40%	-7.06%	11.59%	11.59%
1991	-5.84%	3.25%	-7.19%	2.38%	-2.64%	3.82%	-10.30%	12.77%	-4.45%	-4.45%
1992	4.27%	16.01%	2.33%	5.72%	4.23%	-0.58%	1.83%	-56.64%	4.10%	4.10%
1993	-4.94%	11.58%	-8.03%	-0.26%	-1.76%	11.53%	-3.50%	78.74%	-3.47%	-3.47%
1994	11.50%	24.13%	8.64%	1.47%	8.46%	26.97%	13.07%	-5.86%	9.84%	9.84%
1995	-7.28%	3.45%	-10.06%	-3.71%	0.44%	5.56%	-11.08%	-27.69%	-5.33%	-5.33%
1996	7.20%	13.70%	5.27%	-5.25%	4.86%	18.61%	2.82%	-6.45%	5.24%	5.24%
1997	0.73%	9.33%	-2.03%	12.29%	1.68%	15.29%	8.17%	14.94%	2.53%	2.53%
1998	-13.75%	-7.64%	-15.95%	-9.40%	-7.20%	10.64%	-17.24%	-59.10%	-11.73%	-11.73%
1999	17.61%	26.05%	14.28%	6.63%	9.06%	12.33%	16.11%	485.92%	14.55%	14.55%
2000	5.54%	11.44%	2.97%	1.14%	0.92%	12.04%	5.15%	-50.14%	3.93%	3.93%
2001	5.13%	8.79%	3.41%	5.86%	1.57%	4.03%	20.18%	36.59%	5.08%	5.08%
2002	4.67%	9.83%	2.11%	7.18%	-0.19%	-3.91%	-3.63%	26.31%	3.39%	3.39%
2003	-3.53%	0.72%	-5.80%	-4.98%	-1.95%	-0.23%	-8.83%	-50.08%	-3.67%	-3.67%
2004	13.51%	13.09%	13.74%	5.82%	5.18%	4.49%	1.49%	20.56%	10.34%	10.34%
2005	-5.29%	-1.96%	-7.18%	-6.75%	-2.52%	3.00%	-12.04%	93.71%	-4.88%	-4.88%
2006	-2.28%	7.78%	-8.29%	2.80%	3.07%	7.24%	6.38%	-26.80%	-0.31%	-0.31%
2007	4.51%	10.13%	0.55%	0.72%	0.82%	-1.64%	-6.04%	-40.02%	2.75%	2.75%
2008	-0.62%	1.30%	-2.10%	12.12%	-2.62%	-1.91%	18.52%	-9.12%	0.82%	0.82%
2009	-3.86%	-1.86%	-5.45%	2.67%	-13.20%	-3.49%	-1.01%	-50.32%	-4.98%	-4.98%
2010										
5 Yr Avg.	-1.51%	3.08%	-4.49%	2.31%	-2.89%	0.64%	1.16%	-6.51%	-1.32%	-1.32%
10 Yr Avg.	1.78%	5.93%	-0.60%	2.66%	-0.89%	1.96%	2.02%	-4.93%	1.25%	1.25%

Five year average = 2005 through 2009.

Ten year average = 2000 through 2009.

Chico-Hamilton City District

Percent of Total Sales by Type of Use (2010)



California Water Service Company - Chico - Hamilton City District
Water Supply and Demand Analysis and Projections
Percentage of Total Sales

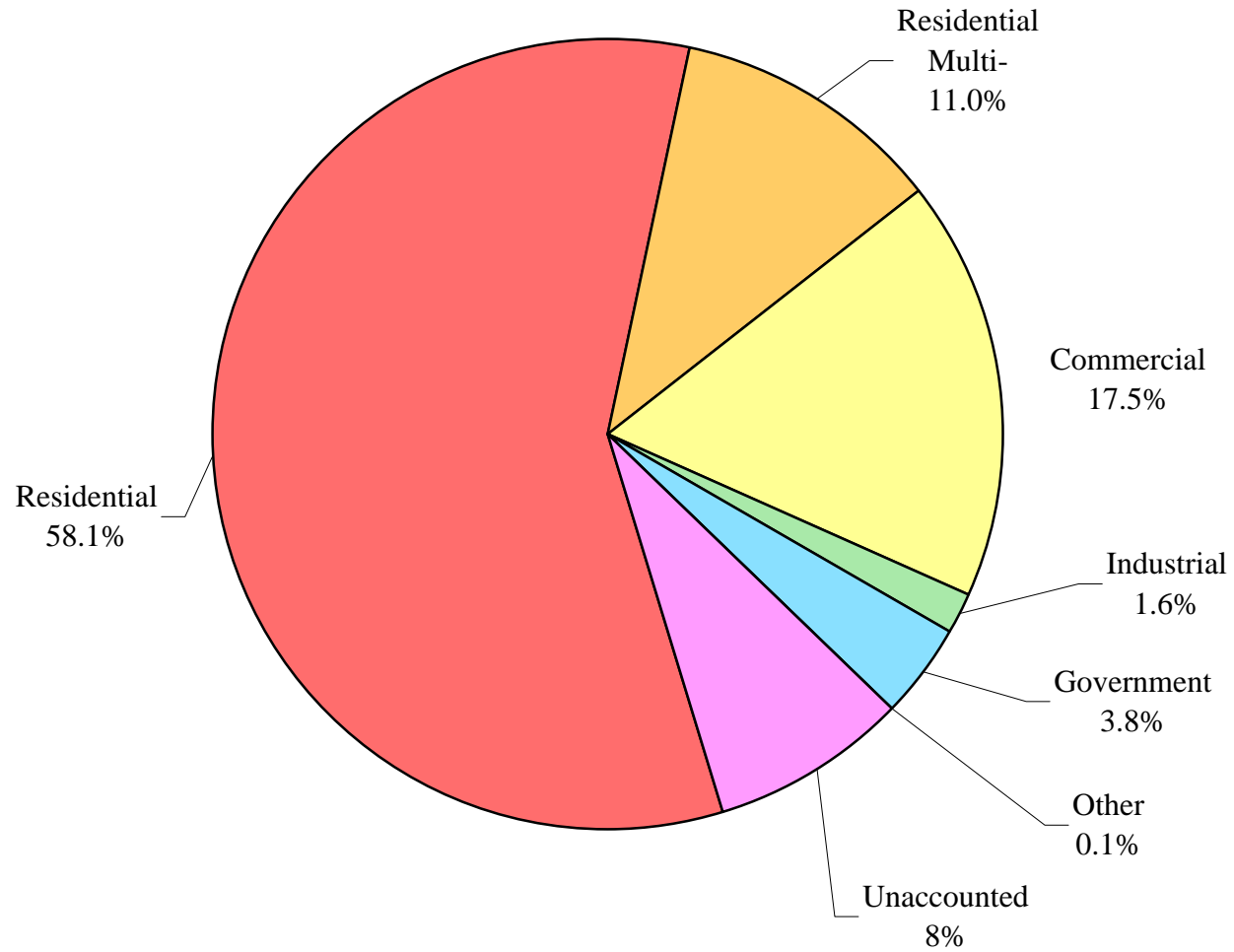
Year	Residential	Multi-Residential	Commercial	Industrial	Government	Other	Percent Total
1980	68.5%	8.4%	17.5%	0.9%	4.5%	0.2%	100.0%
1981	67.4%	8.7%	17.9%	1.0%	4.7%	0.2%	100.0%
1982	65.6%	9.2%	19.1%	0.8%	5.0%	0.3%	100.0%
1983	65.2%	9.0%	20.1%	0.8%	4.6%	0.3%	100.0%
1984	65.9%	8.6%	19.3%	0.8%	5.1%	0.2%	100.0%
1985	64.7%	9.4%	19.7%	0.6%	5.4%	0.2%	100.0%
1986	63.3%	10.0%	20.5%	0.7%	5.5%	0.1%	100.0%
1987	64.7%	9.9%	19.8%	0.5%	4.8%	0.2%	100.0%
1988	63.4%	10.0%	20.7%	0.6%	5.1%	0.2%	100.0%
1989	61.8%	10.1%	21.7%	0.7%	5.4%	0.3%	100.0%
1990	63.1%	10.0%	21.3%	0.6%	4.8%	0.2%	100.0%
1991	62.2%	10.7%	21.7%	0.7%	4.5%	0.3%	100.0%
1992	62.3%	10.9%	21.7%	0.6%	4.4%	0.1%	100.0%
1993	61.3%	11.3%	22.1%	0.7%	4.4%	0.2%	100.0%
1994	62.2%	10.4%	21.8%	0.8%	4.5%	0.2%	100.0%
1995	61.0%	10.6%	23.1%	0.9%	4.3%	0.1%	100.0%
1996	62.1%	9.5%	23.0%	1.0%	4.2%	0.1%	100.0%
1997	61.0%	10.4%	22.8%	1.2%	4.4%	0.1%	100.0%
1998	59.6%	10.7%	24.0%	1.5%	4.1%	0.1%	100.0%
1999	61.2%	10.0%	22.9%	1.4%	4.2%	0.3%	100.0%
2000	62.1%	9.7%	22.2%	1.6%	4.2%	0.2%	100.0%
2001	62.2%	9.8%	21.5%	1.5%	4.8%	0.2%	100.0%
2002	62.9%	10.1%	20.7%	1.4%	4.5%	0.3%	100.0%
2003	63.0%	10.0%	21.1%	1.5%	4.3%	0.1%	100.0%
2004	64.8%	9.6%	20.1%	1.4%	3.9%	0.1%	100.0%
2005	64.6%	9.4%	20.6%	1.5%	3.6%	0.3%	100.0%
2006	63.3%	9.7%	21.3%	1.6%	3.9%	0.2%	100.0%
2007	64.4%	9.5%	20.9%	1.6%	3.5%	0.1%	100.0%
2008	63.4%	10.6%	20.2%	1.5%	4.2%	0.1%	100.0%
2009	64.2%	11.4%	18.4%	1.5%	4.3%	0.1%	100.0%
2010	63.1%	11.9%	19.0%	1.7%	4.1%	0.1%	100.0%
5 Yr Avg.	64.0%	10.1%	20.3%	1.6%	3.9%	0.2%	100.0%
10 Yr Avg.	63.5%	10.0%	20.7%	1.5%	4.1%	0.2%	100.0%

Five year average = 2005 through 2009.

Ten year average = 2000 through 2009.

Chico-Hamilton City District

Percent of Total Demand by Type of Use (2010)



California Water Service Company - Chico - Hamilton City District
Water Supply and Demand Analysis and Projections
Percentage of Total Demand

Year	Residential	Multi-Residential	Commercial	Industrial	Government	Other	Unaccounted Water	Percent Total
1980	63.05%	7.74%	16.09%	0.80%	4.14%	0.18%	8.00%	100.00%
1981	61.98%	8.05%	16.51%	0.92%	4.35%	0.20%	8.00%	100.00%
1982	60.39%	8.43%	17.62%	0.75%	4.57%	0.25%	8.00%	100.00%
1983	60.02%	8.25%	18.53%	0.73%	4.24%	0.23%	8.00%	100.00%
1984	60.60%	7.94%	17.79%	0.72%	4.72%	0.23%	8.00%	100.00%
1985	59.56%	8.62%	18.15%	0.60%	4.93%	0.14%	8.00%	100.00%
1986	58.24%	9.21%	18.84%	0.60%	5.01%	0.09%	8.00%	100.00%
1987	59.56%	9.09%	18.25%	0.49%	4.45%	0.17%	8.00%	100.00%
1988	58.32%	9.24%	19.07%	0.56%	4.66%	0.15%	8.00%	100.00%
1989	56.85%	9.33%	19.95%	0.60%	5.00%	0.27%	8.00%	100.00%
1990	58.03%	9.22%	19.55%	0.55%	4.42%	0.23%	8.00%	100.00%
1991	57.18%	9.88%	19.92%	0.60%	4.15%	0.27%	8.00%	100.00%
1992	57.28%	10.04%	19.95%	0.57%	4.06%	0.11%	8.00%	100.00%
1993	56.41%	10.37%	20.30%	0.66%	4.06%	0.20%	8.00%	100.00%
1994	57.26%	9.58%	20.05%	0.76%	4.18%	0.18%	8.00%	100.00%
1995	56.08%	9.74%	21.27%	0.85%	3.92%	0.13%	8.00%	100.00%
1996	57.12%	8.77%	21.19%	0.96%	3.83%	0.12%	8.00%	100.00%
1997	56.12%	9.61%	21.02%	1.08%	4.04%	0.13%	8.00%	100.00%
1998	54.84%	9.86%	22.10%	1.35%	3.79%	0.06%	8.00%	100.00%
1999	56.30%	9.18%	21.04%	1.33%	3.84%	0.32%	8.00%	100.00%
2000	57.17%	8.93%	20.43%	1.43%	3.89%	0.15%	8.00%	100.00%
2001	57.20%	9.00%	19.74%	1.42%	4.45%	0.20%	8.00%	100.00%
2002	57.91%	9.33%	19.06%	1.32%	4.14%	0.24%	8.00%	100.00%
2003	57.99%	9.20%	19.40%	1.36%	3.92%	0.13%	8.00%	100.00%
2004	59.65%	8.83%	18.49%	1.29%	3.61%	0.14%	8.00%	100.00%
2005	59.39%	8.65%	18.95%	1.40%	3.34%	0.28%	8.00%	100.00%
2006	58.22%	8.92%	19.59%	1.50%	3.56%	0.20%	8.00%	100.00%
2007	59.21%	8.75%	19.23%	1.44%	3.25%	0.12%	8.00%	100.00%
2008	58.37%	9.73%	18.57%	1.40%	3.83%	0.11%	8.00%	100.00%
2009	59.06%	10.51%	16.96%	1.42%	3.99%	0.06%	8.00%	100.00%
2010	58.08%	10.95%	17.46%	1.59%	3.80%	0.12%	8.00%	100.00%
5 Yr Avg.	58.85%	9.31%	18.66%	1.43%	3.59%	0.15%	8.00%	100.00%
10 Yr Avg.	58.42%	9.18%	19.04%	1.40%	3.80%	0.16%	8.00%	100.00%

Five year average = 2005 through 2009.

Ten year average = 2000 through 2009.

California Water Service Company - Chico-Hamilton City District
Water Supply and Demand Analysis and Projections

Scenario #1: Based on Maintaining Growth at the 10-Year Average Annual Growth and Low Demand per Service for each Customer Class.
 5-Year Average High

Summary of Historical Growth Rate from Worksheet 2			
Customer Type	5 Yr. Avg. Historical Growth Rate	Individual Growth Rate Selected	Notes
Single Family Residential	1.370%	1.370%	Historical growth rate used
Multi Family Residential	13.726%	1.386%	Overall growth rate used
Commercial	-0.686%	1.386%	Overall growth rate used
Industrial	-6.652%	1.386%	Overall growth rate used
Government	6.034%	6.034%	Historical growth rate used
Other	-8.294%	1.386%	Overall growth rate used
Overall	1.386%	1.535%	

Summary of Lowest Demand per Service from Worksheets 5 and 6									
Demand/Serv. Units	Multi-Residential						Total Other	Unaccounted Total Serv.	Combined Demand/Serv.
	Residential	(service)	(unit)	Commercial	Industrial	Government			
Gal/Service/Yr	228,203	1,315,467	89,623	470,141	1,033,038	858,977	154,298	27,645	345,560
AF/Service/Yr	0.700	4.037	0.275	1.443	3.170	2.636	0.474	0.085	1.060
Gal/Service/Day	625	3,604	246	1,288	2,830	2,353	423	76	947

California Water Service Company - Chico-Hamilton City District
Water Supply and Demand Analysis and Projections

30-year projection Summary

Scenario #1: Based on Maintaining Growth at the

- 10-Year
 5-Year

Average Annual Growth and

- Low
 Average
 High

Demand per Service for each Customer Class.

Customer Type	Projected Services 2010	Projected Services 2015	Projected Services 2020	Projected Services 2025	Projected Services 2030	Projected Services 2035	Projected Services 2040	Services projected to be added from 2010 - 2040
Single Family Residential	23,012	24,632	26,366	28,223	30,209	32,336	34,613	11,601
Multi Family Residential	777	832	891	955	1,023	1,096	1,174	397
Commercial	3,063	3,281	3,515	3,765	4,034	4,321	4,629	1,566
Industrial	25	27	29	31	33	36	38	13
Government	472	632	848	1,136	1,523	2,041	2,736	2,264
Other	29	31	34	36	39	41	44	15
Total	27,378	29,436	31,683	34,146	36,861	39,872	43,234	15,856

Customer Type	Projected Demand 2010 (ccf)	Projected Demand 2015 (ccf)	Projected Demand 2020 (ccf)	Projected Demand 2025 (ccf)	Projected Demand 2030 (ccf)	Projected Demand 2035 (ccf)	Projected Demand 2040 (ccf)	Projected demand to be added from 2010 - 2040 (ccf)
Single Family Residential	7,020,088	7,514,321	8,043,350	8,609,625	9,215,766	9,864,582	10,559,076	3,538,989
Multi Family Residential	1,365,693	1,462,996	1,567,231	1,678,893	1,798,510	1,926,650	2,063,920	698,227
Commercial	1,924,967	2,062,117	2,209,038	2,366,427	2,535,030	2,715,645	2,909,129	984,162
Industrial	35,003	37,497	40,168	43,030	46,096	49,380	52,898	17,896
Government	541,818	726,238	973,430	1,304,759	1,748,864	2,344,131	3,142,010	2,600,192
Other	6,065	6,497	6,960	7,455	7,987	8,556	9,165	3,101
Unaccounted	1,011,772	1,087,833	1,170,859	1,261,888	1,362,215	1,473,474	1,597,749	585,977
Total	11,905,405	12,897,498	14,011,036	15,272,078	16,714,468	18,382,418	20,333,947	8,428,543

Customer Type	Projected Demand 2010 (AF)	Projected Demand 2015 (AF)	Projected Demand 2020 (AF)	Projected Demand 2025 (AF)	Projected Demand 2030 (AF)	Projected Demand 2035 (AF)	Projected Demand 2040 (AF)	Projected demand to be added from 2010 - 2040 (AF)
Single Family Residential	16,116	17,251	18,465	19,765	21,157	22,646	24,240	8,124
Multi Family Residential	3,135	3,359	3,598	3,854	4,129	4,423	4,738	1,603
Commercial	4,419	4,734	5,071	5,433	5,820	6,234	6,678	2,259
Industrial	80	86	92	99	106	113	121	41
Government	1,244	1,667	2,235	2,995	4,015	5,381	7,213	5,969
Other	14	15	16	17	18	20	21	7
Unaccounted	2,323	2,497	2,688	2,897	3,127	3,383	3,668	1,345
Total	27,331	29,609	32,165	35,060	38,371	42,201	46,681	19,349

California Water Service Company - Chico-Hamilton City District
Water Supply and Demand Analysis and Projections

2000's Projections

Scenario #1: Based on Maintaining Growth at the

- 10-Year
- 5-Year

Average Annual Growth and

- Low
- Average
- High

Demand per Service for each Customer Class.

Customer Type	Actual Services 2001	Actual Services 2002	Actual Services 2003	Actual Services 2004	Actual Services 2005	Actual Services 2006	Actual Services 2007	Actual Services 2008	Actual Services 2009	Projected Services 2010
Residential	19,454	20,017	20,497	21,212	21,761	22,182	22,568	22,732	22,701	23,012
Multi-Residential	422	428	428	426	426	424	423	592	766	777
Commercial	2,960	3,016	3,074	3,135	3,217	3,260	3,310	3,146	3,021	3,063
Industrial	35	35	36	36	35	36	36	30	25	25
Government	344	344	344	340	342	341	340	349	445	472
Other	36	36	42	47	50	50	48	41	29	29
Total	23,251	23,876	24,421	25,196	25,831	26,293	26,725	26,890	26,987	27,378

Customer Type	Demand 2001(ccf)	Demand 2002(ccf)	Demand 2003(ccf)	Demand 2004(ccf)	Demand 2005(ccf)	Demand 2006(ccf)	Demand 2007(ccf)	Demand 2008(ccf)	Demand 2009(ccf)	Demand 2010(ccf)
Residential	5,934,676	6,106,426	6,252,855	6,470,975	6,638,454	6,766,885	6,884,639	6,934,745	6,925,212	7,020,088
Multi-Residential	742,094	752,645	752,645	749,128	749,128	745,611	743,852	1,041,042	1,347,023	1,365,693
Commercial	1,860,314	1,895,509	1,931,961	1,970,299	2,021,835	2,048,859	2,080,284	1,977,212	1,898,652	1,924,967
Industrial	48,334	48,334	49,715	49,715	48,334	49,715	49,715	41,429	34,524	35,003
Government	395,009	395,009	395,009	390,415	392,712	391,564	390,415	400,750	510,985	541,818
Other	7,426	7,426	8,663	9,694	10,313	10,313	9,901	8,457	5,982	6,065
Unaccounted	859,253	882,350	902,491	931,132	954,598	971,672	987,637	993,743	997,319	1,011,772
Total	9,847,105	10,087,698	10,293,339	10,571,358	10,815,374	10,984,619	11,146,442	11,397,378	11,719,697	11,905,405

Customer Type	Demand 2001(AF)	Demand 2002(AF)	Demand 2003(AF)	Demand 2004(AF)	Demand 2005(AF)	Demand 2006(AF)	Demand 2007(AF)	Demand 2008(AF)	Demand 2009(AF)	Demand 2010(AF)
Residential	13,624	14,019	14,355	14,855	15,240	15,535	15,805	15,920	15,898	16,116
Multi-Residential	1,704	1728	1728	1720	1720	1712	1708	2390	3092	3,135
Commercial	4,271	4352	4435	4523	4642	4704	4776	4539	4359	4,419
Industrial	111	111	114	114	111	114	114	95	79	80
Government	907	907	907	896	902	899	896	920	1173	1,244
Other	17	17	20	22	24	24	23	19	14	14
Unaccounted	1,973	2026	2072	2138	2191	2231	2267	2281	2290	2,323
Total	22,606	23,158	23,630	24,269	24,829	25,217	25,589	26,165	26,905	27,331

**California Water Service Company - Chico-Hamilton City District
Water Supply and Demand Analysis and Projections**

2010's Projections

Scenario #1: Based on Maintaining Growth at the 10-Year Average Annual Growth and Low Demand per Service for each Customer Class.
 5-Year Average Annual Growth and Average Demand per Service for each Customer Class.
 High Demand per Service for each Customer Class.

Customer Type	Projected Services 2011	Projected Services 2012	Projected Services 2013	Projected Services 2014	Projected Services 2015	Projected Services 2016	Projected Services 2017	Projected Services 2018	Projected Services 2019	Projected Services 2020
Residential	23,327	23,647	23,971	24,299	24,632	24,970	25,312	25,658	26,010	26,366
Multi-Residential	787	798	809	821	832	843	855	867	879	891
Commercial	3,105	3,148	3,192	3,236	3,281	3,327	3,373	3,419	3,467	3,515
Industrial	26	26	26	27	27	28	28	28	29	29
Government	500	531	563	596	632	671	711	754	799	848
Other	30	30	31	31	31	32	32	33	33	34
Total	27,776	28,180	28,592	29,010	29,436	29,870	30,311	30,760	31,217	31,683

Customer Type	Demand 2011(ccf)	Demand 2012(ccf)	Demand 2013(ccf)	Demand 2014(ccf)	Demand 2015(ccf)	Demand 2016(ccf)	Demand 2017(ccf)	Demand 2018(ccf)	Demand 2019(ccf)	Demand 2020(ccf)
Residential	7,116,263	7,213,756	7,312,584	7,412,766	7,514,321	7,617,267	7,721,624	7,827,410	7,934,646	8,043,350
Multi-Residential	1,384,622	1,403,813	1,423,269	1,442,996	1,462,996	1,483,273	1,503,831	1,524,674	1,545,806	1,567,231
Commercial	1,951,647	1,978,697	2,006,122	2,033,926	2,062,117	2,090,698	2,119,675	2,149,053	2,178,839	2,209,038
Industrial	35,488	35,980	36,478	36,984	37,497	38,016	38,543	39,077	39,619	40,168
Government	574,511	609,177	645,935	684,910	726,238	770,059	816,525	865,794	918,036	973,430
Other	6,149	6,234	6,320	6,408	6,497	6,587	6,678	6,771	6,864	6,960
Unaccounted	1,026,470	1,041,418	1,056,623	1,072,093	1,087,833	1,103,851	1,120,154	1,136,752	1,153,650	1,170,859
Total	12,095,148	12,289,073	12,487,332	12,690,084	12,897,498	13,109,751	13,327,030	13,549,531	13,777,461	14,011,036

Customer Type	Demand 2011(AF)	Demand 2012(AF)	Demand 2013(AF)	Demand 2014(AF)	Demand 2015(AF)	Demand 2016(AF)	Demand 2017(AF)	Demand 2018(AF)	Demand 2019(AF)	Demand 2020(AF)
Residential	16,337	16,561	16,787	17,017	17,251	17,487	17,727	17,969	18,216	18,465
Multi-Residential	3,179	3,223	3,267	3,313	3,359	3,405	3,452	3,500	3,549	3,598
Commercial	4,480	4,542	4,605	4,669	4,734	4,800	4,866	4,934	5,002	5,071
Industrial	81	83	84	85	86	87	88	90	91	92
Government	1,319	1,398	1,483	1,572	1,667	1,768	1,874	1,988	2,108	2,235
Other	14	14	15	15	15	15	15	16	16	16
Unaccounted	2,356	2,391	2,426	2,461	2,497	2,534	2,572	2,610	2,648	2,688
Total	27,767	28,212	28,667	29,133	29,609	30,096	30,595	31,106	31,629	32,165

California Water Service Company - Chico-Hamilton City District
Water Supply and Demand Analysis and Projections

2020's Projections

Scenario #1: Based on Maintaining Growth at the 10-Year Average Annual Growth and Low Demand per Service for each Customer Class.
 5-Year Average High

Customer Type	Projected Services 2,021	Projected Services 2,022	Projected Services 2,023	Projected Services 2,024	Projected Services 2,025	Projected Services 2,026	Projected Services 2,027	Projected Services 2,028	Projected Services 2,029	Projected Services 2,030
Residential	26,728	27,094	27,465	27,841	28,223	28,609	29,001	29,398	29,801	30,209
Multi-Residential	904	916	929	942	955	968	981	995	1,009	1,023
Commercial	3,564	3,613	3,663	3,714	3,765	3,817	3,870	3,924	3,978	4,034
Industrial	29	30	30	31	31	32	32	32	33	33
Government	899	953	1,011	1,072	1,136	1,205	1,278	1,355	1,436	1,523
Other	34	35	35	36	36	37	37	38	38	39
Total	32,157	32,640	33,133	33,635	34,146	34,668	35,200	35,742	36,296	36,861

Customer Type	Demand 2021(ccf)	Demand 2022(ccf)	Demand 2023(ccf)	Demand 2024(ccf)	Demand 2025(ccf)	Demand 2026(ccf)	Demand 2027(ccf)	Demand 2028(ccf)	Demand 2029(ccf)	Demand 2030(ccf)
Residential	8,153,544	8,265,248	8,378,482	8,493,267	8,609,625	8,727,577	8,847,144	8,968,350	9,091,217	9,215,766
Multi-Residential	1,588,953	1,610,976	1,633,304	1,655,942	1,678,893	1,702,162	1,725,754	1,749,673	1,773,924	1,798,510
Commercial	2,239,655	2,270,697	2,302,169	2,334,077	2,366,427	2,399,226	2,432,479	2,466,193	2,500,375	2,535,030
Industrial	40,725	41,289	41,861	42,442	43,030	43,626	44,231	44,844	45,466	46,096
Government	1,032,167	1,094,448	1,160,487	1,230,510	1,304,759	1,383,488	1,466,968	1,555,485	1,649,343	1,748,864
Other	7,056	7,154	7,253	7,354	7,455	7,559	7,664	7,770	7,877	7,987
Unaccounted	1,188,388	1,206,245	1,224,440	1,242,985	1,261,888	1,281,163	1,300,820	1,320,873	1,341,333	1,362,215
Total	14,250,488	14,496,056	14,747,996	15,006,575	15,272,078	15,544,801	15,825,061	16,113,188	16,409,534	16,714,468

Customer Type	Demand 2021(AF)	Demand 2022(AF)	Demand 2023(AF)	Demand 2024(AF)	Demand 2025(AF)	Demand 2026(AF)	Demand 2027(AF)	Demand 2028(AF)	Demand 2029(AF)	Demand 2030(AF)
Residential	18,718	18,975	19,234	19,498	19,765	20,036	20,310	20,589	20,871	21,157
Multi-Residential	3,648	3,698	3,750	3,802	3,854	3,908	3,962	4,017	4,072	4,129
Commercial	5,142	5,213	5,285	5,358	5,433	5,508	5,584	5,662	5,740	5,820
Industrial	93	95	96	97	99	100	102	103	104	106
Government	2,370	2,513	2,664	2,825	2,995	3,176	3,368	3,571	3,786	4,015
Other	16	16	17	17	17	17	18	18	18	18
Unaccounted	2,728	2,769	2,811	2,854	2,897	2,941	2,986	3,032	3,079	3,127
Total	32,715	33,279	33,857	34,451	35,060	35,686	36,330	36,991	37,671	38,371

California Water Service Company - Chico-Hamilton City District

Water Supply and Demand Analysis and Projections

2030's Projections

Scenario #1: Based on Maintaining Growth at the

- 10-Year
 5-Year

Average Annual Growth and

 Low Average High

Demand per Service for each Customer Class.

Customer Type	Projected Services 2,031	Projected Services 2,032	Projected Services 2,033	Projected Services 2,034	Projected Services 2,035	Projected Services 2,036	Projected Services 2,037	Projected Services 2,038	Projected Services 2,039	Projected Services 2,040
Residential	30,623	31,043	31,468	31,899	32,336	32,779	33,228	33,684	34,145	34,613
Multi-Residential	1,037	1,051	1,066	1,081	1,096	1,111	1,126	1,142	1,158	1,174
Commercial	4,089	4,146	4,204	4,262	4,321	4,381	4,442	4,503	4,566	4,629
Industrial	34	34	35	35	36	36	37	37	38	38
Government	1,615	1,712	1,816	1,925	2,041	2,165	2,295	2,434	2,581	2,736
Other	39	40	40	41	41	42	43	43	44	44
Total	37,438	38,027	38,628	39,243	39,872	40,514	41,171	41,843	42,530	43,234

Customer Type	Demand 2031(ccf)	Demand 2032(ccf)	Demand 2033(ccf)	Demand 2034(ccf)	Demand 2035(ccf)	Demand 2036(ccf)	Demand 2037(ccf)	Demand 2038(ccf)	Demand 2039(ccf)	Demand 2040(ccf)
Residential	9,342,022	9,470,008	9,599,747	9,731,264	9,864,582	9,999,727	10,136,723	10,275,596	10,416,372	10,559,076
Multi-Residential	1,823,438	1,848,711	1,874,334	1,900,312	1,926,650	1,953,354	1,980,427	2,007,876	2,035,705	2,063,920
Commercial	2,570,165	2,605,788	2,641,904	2,678,521	2,715,645	2,753,284	2,791,444	2,830,134	2,869,360	2,909,129
Industrial	46,735	47,382	48,039	48,705	49,380	50,064	50,758	51,462	52,175	52,898
Government	1,854,391	1,966,285	2,084,930	2,210,735	2,344,131	2,485,576	2,635,555	2,794,585	2,963,210	3,142,010
Other	8,097	8,210	8,323	8,439	8,556	8,674	8,794	8,916	9,040	9,165
Unaccounted	1,383,533	1,405,301	1,427,537	1,450,255	1,473,474	1,497,212	1,521,487	1,546,321	1,571,734	1,597,749
Total	17,028,381	17,351,684	17,684,814	18,028,230	18,382,418	18,747,890	19,125,190	19,514,890	19,917,595	20,333,947

Customer Type	Demand 2031(AF)	Demand 2032(AF)	Demand 2033(AF)	Demand 2034(AF)	Demand 2035(AF)	Demand 2036(AF)	Demand 2037(AF)	Demand 2038(AF)	Demand 2039(AF)	Demand 2040(AF)
Residential	21,446	21,740	22,038	22,340	22,646	22,956	23,271	23,590	23,913	24,240
Multi-Residential	4,186	4,244	4,303	4,363	4,423	4,484	4,546	4,609	4,673	4,738
Commercial	5,900	5,982	6,065	6,149	6,234	6,321	6,408	6,497	6,587	6,678
Industrial	107	109	110	112	113	115	117	118	120	121
Government	4,257	4,514	4,786	5,075	5,381	5,706	6,050	6,416	6,803	7,213
Other	19	19	19	19	20	20	20	20	21	21
Unaccounted	3,176	3,226	3,277	3,329	3,383	3,437	3,493	3,550	3,608	3,668
Total	39,092	39,834	40,599	41,387	42,201	43,040	43,906	44,800	45,725	46,681

California Water Service Company - Chico-Hamilton City District

Water Supply and Demand Analysis and Projections

Worksheet 11

Scenario #2: Based on Maintaining Growth at the 10-Year Average Annual Growth and Low Demand per Service for each Customer Class.
 5-Year Average High

Summary of Historical Growth Rate from Worksheet 2			
Customer Type	5 Yr. Avg. Historical Growth Rate	Individual Growth Rate Selected	Notes
Single Family Residential	1.370%	1.370%	Historical growth rate used
Multi Family Residential	13.726%	1.386%	Overall growth rate used
Commercial	-0.686%	1.386%	Overall growth rate used
Industrial	-6.652%	1.386%	Overall growth rate used
Government	6.034%	6.034%	Historical growth rate used
Other	-8.294%	1.386%	Overall growth rate used
Overall	1.386%	1.535%	

Summary of Average Demand per Service from Worksheets 5 and 6									
Demand/Serv. Units	Residential	Multi-Residential		Commercial	Industrial	Government	Total Other	Unaccounted Total Serv.	Combined Demand/Serv.
		(service)	(unit)						
Gal/Service/Yr	280,758	1,822,946	96,271	557,343	2,371,583	1,245,830	569,952	32,105	401,313
AF/Service/Yr	0.862	5.594	0.295	1.710	7.278	3.823	1.749	0.099	1.232
Gal/Service/Day	769	4,994	264	1,527	6,497	3,413	1,562	88	1,099

California Water Service Company - Chico-Hamilton City District
Water Supply and Demand Analysis and Projections

30-year projection Summary

Scenario #2: Based on Maintaining Growth at the 10-Year Average Annual Growth and 5-Year Demand per Service for each Customer Class.
 Low Average High

Customer Type	Projected Services 2010	Projected Services 2015	Projected Services 2020	Projected Services 2025	Projected Services 2030	Projected Services 2035	Projected Services 2040	Services projected to be added from 2010 - 2040
Single Family Residential	23,012	24,632	26,366	28,223	30,209	32,336	34,613	11,601
Multi Family Residential	777	832	891	955	1,023	1,096	1,174	397
Commercial	3,063	3,281	3,515	3,765	4,034	4,321	4,629	1,566
Industrial	25	27	29	31	33	36	38	13
Government	472	632	848	1,136	1,523	2,041	2,736	2,264
Other	29	31	34	36	39	41	44	15
Total	27,378	29,436	31,683	34,146	36,861	39,872	43,234	15,856

Customer Type	Projected Demand 2010 (ccf)	Projected Demand 2015 (ccf)	Projected Demand 2020 (ccf)	Projected Demand 2025 (ccf)	Projected Demand 2030 (ccf)	Projected Demand 2035 (ccf)	Projected Demand 2040 (ccf)	Projected demand to be added from 2010 - 2040 (ccf)
Single Family Residential	8,636,809	9,244,865	9,895,729	10,592,416	11,338,152	12,136,389	12,990,825	4,354,015
Multi Family Residential	1,892,548	2,027,388	2,171,835	2,326,573	2,492,337	2,669,910	2,860,136	967,587
Commercial	2,282,010	2,444,598	2,618,770	2,805,352	3,005,227	3,219,343	3,448,714	1,166,704
Industrial	80,357	86,082	92,215	98,785	105,824	113,363	121,440	41,083
Government	785,833	1,053,310	1,411,828	1,892,376	2,536,490	3,399,843	4,557,059	3,771,226
Other	22,402	23,998	25,708	27,539	29,501	31,603	33,855	11,453
Unaccounted	1,175,012	1,263,345	1,359,767	1,465,483	1,581,996	1,711,206	1,855,532	680,519
Total	14,874,971	16,143,585	17,575,852	19,208,525	21,089,527	23,281,658	25,867,560	10,992,589

Customer Type	Projected Demand 2010 (AF)	Projected Demand 2015 (AF)	Projected Demand 2020 (AF)	Projected Demand 2025 (AF)	Projected Demand 2030 (AF)	Projected Demand 2035 (AF)	Projected Demand 2040 (AF)	Projected demand to be added from 2010 - 2040 (AF)
Single Family Residential	19,828	21,223	22,718	24,317	26,029	27,862	29,823	9,996
Multi Family Residential	4,345	4,654	4,986	5,341	5,722	6,129	6,566	2,221
Commercial	5,239	5,612	6,012	6,440	6,899	7,391	7,917	2,678
Industrial	184	198	212	227	243	260	279	94
Government	1,804	2,418	3,241	4,344	5,823	7,805	10,462	8,658
Other	51	55	59	63	68	73	78	26
Unaccounted	2,697	2,900	3,122	3,364	3,632	3,928	4,260	1,562
Total	34,148	37,061	40,349	44,097	48,415	53,448	59,384	25,236

California Water Service Company - Chico-Hamilton City District
Water Supply and Demand Analysis and Projections

2000's Projections

Scenario #2: Based on Maintaining Growth at the 10-Year Average Annual Growth and Low Demand per Service for each Customer Class.
 5-Year Average Annual Growth and Average Demand per Service for each Customer Class.
 High

Customer Type	Actual Services 2001	Actual Services 2002	Actual Services 2003	Actual Services 2004	Actual Services 2005	Actual Services 2006	Actual Services 2007	Actual Services 2008	Actual Services 2009	Projected Services 2010
Residential	19,454	20,017	20,497	21,212	21,761	22,182	22,568	22,732	22,701	23,012
Multi-Residential	422	428	428	426	426	424	423	592	766	777
Commercial	2,960	3,016	3,074	3,135	3,217	3,260	3,310	3,146	3,021	3,063
Industrial	35	35	36	36	35	36	36	30	25	25
Government	344	344	344	340	342	341	340	349	445	472
Other	36	36	42	47	50	50	48	41	29	29
Total	23,251	23,876	24,421	25,196	25,831	26,293	26,725	26,890	26,987	27,378

Customer Type	Demand 2001(ccf)	Demand 2002(ccf)	Demand 2003(ccf)	Demand 2004(ccf)	Demand 2005(ccf)	Demand 2006(ccf)	Demand 2007(ccf)	Demand 2008(ccf)	Demand 2009(ccf)	Demand 2010(ccf)
Residential	7,301,428	7,512,732	7,692,884	7,961,236	8,167,286	8,325,294	8,470,167	8,531,813	8,520,084	8,636,809
Multi-Residential	1,028,378	1,042,999	1,042,999	1,038,125	1,038,125	1,033,251	1,030,815	1,442,653	1,866,676	1,892,548
Commercial	2,205,365	2,247,088	2,290,302	2,335,750	2,396,845	2,428,882	2,466,135	2,343,946	2,250,814	2,282,010
Industrial	110,962	110,962	114,132	114,132	110,962	114,132	114,132	95,110	79,258	80,357
Government	572,906	572,906	572,906	566,245	569,575	567,910	566,245	581,233	741,114	785,833
Other	27,429	27,429	32,000	35,810	38,096	38,096	36,572	31,238	22,095	22,402
Unaccounted	997,886	1,024,710	1,048,100	1,081,361	1,108,614	1,128,442	1,146,983	1,154,075	1,158,227	1,175,012
Total	12,244,353	12,538,826	12,793,323	13,132,659	13,429,502	13,636,008	13,831,047	14,180,068	14,638,269	14,874,971

Customer Type	Demand 2001(AF)	Demand 2002(AF)	Demand 2003(AF)	Demand 2004(AF)	Demand 2005(AF)	Demand 2006(AF)	Demand 2007(AF)	Demand 2008(AF)	Demand 2009(AF)	Demand 2010(AF)
Residential	16,762	17,247	17,661	18,277	18,750	19,112	19,445	19,586	19,560	19,828
Multi-Residential	2,361	2,394	2,394	2,383	2,383	2,372	2,366	3,312	4,285	4,345
Commercial	5,063	5,159	5,258	5,362	5,502	5,576	5,662	5,381	5,167	5,239
Industrial	255	255	262	262	255	262	262	218	182	184
Government	1,315	1,315	1,315	1,300	1,308	1,304	1,300	1,334	1,701	1,804
Other	63	63	73	82	87	87	84	72	51	51
Unaccounted	2,291	2,352	2,406	2,482	2,545	2,591	2,633	2,649	2,659	2,697
Total	28,109	28,785	29,370	30,149	30,830	31,304	31,752	32,553	33,605	34,148

California Water Service Company - Chico-Hamilton City District

Water Supply and Demand Analysis and Projections

Worksheet 11

2010's Projections

Scenario #2: Based on Maintaining Growth at the 10-Year Average Annual Growth and Average Demand per Service for each Customer Class.
 5-Year High

Customer Type	Projected Services 2011	Projected Services 2012	Projected Services 2013	Projected Services 2014	Projected Services 2015	Projected Services 2016	Projected Services 2017	Projected Services 2018	Projected Services 2019	Projected Services 2020
Residential	23,327	23,647	23,971	24,299	24,632	24,970	25,312	25,658	26,010	26,366
Multi-Residential	787	798	809	821	832	843	855	867	879	891
Commercial	3,105	3,148	3,192	3,236	3,281	3,327	3,373	3,419	3,467	3,515
Industrial	26	26	26	27	27	28	28	28	29	29
Government	500	531	563	596	632	671	711	754	799	848
Other	30	30	31	31	31	32	32	33	33	34
Total	27,776	28,180	28,592	29,010	29,436	29,870	30,311	30,760	31,217	31,683

Customer Type	Demand 2011(ccf)	Demand 2012(ccf)	Demand 2013(ccf)	Demand 2014(ccf)	Demand 2015(ccf)	Demand 2016(ccf)	Demand 2017(ccf)	Demand 2018(ccf)	Demand 2019(ccf)	Demand 2020(ccf)
Residential	8,755,134	8,875,079	8,996,668	9,119,922	9,244,865	9,371,519	9,499,909	9,630,058	9,761,990	9,895,729
Multi-Residential	1,918,779	1,945,373	1,972,336	1,999,673	2,027,388	2,055,488	2,083,977	2,112,861	2,142,145	2,171,835
Commercial	2,313,639	2,345,706	2,378,217	2,411,179	2,444,598	2,478,480	2,512,832	2,547,660	2,582,970	2,618,770
Industrial	81,471	82,600	83,745	84,905	86,082	87,275	88,485	89,711	90,955	92,215
Government	833,250	883,529	936,841	993,370	1,053,310	1,116,866	1,184,258	1,255,716	1,331,486	1,411,828
Other	22,712	23,027	23,346	23,670	23,998	24,330	24,668	25,009	25,356	25,708
Unaccounted	1,192,081	1,209,441	1,227,100	1,245,065	1,263,345	1,281,947	1,300,881	1,320,156	1,339,781	1,359,767
Total	15,117,065	15,364,754	15,618,252	15,877,783	16,143,585	16,415,906	16,695,010	16,981,171	17,274,683	17,575,852

Customer Type	Demand 2011(AF)	Demand 2012(AF)	Demand 2013(AF)	Demand 2014(AF)	Demand 2015(AF)	Demand 2016(AF)	Demand 2017(AF)	Demand 2018(AF)	Demand 2019(AF)	Demand 2020(AF)
Residential	20,099	20,375	20,654	20,937	21,223	21,514	21,809	22,108	22,411	22,718
Multi-Residential	4,405	4,466	4,528	4,591	4,654	4,719	4,784	4,850	4,918	4,986
Commercial	5,311	5,385	5,460	5,535	5,612	5,690	5,769	5,849	5,930	6,012
Industrial	187	190	192	195	198	200	203	206	209	212
Government	1,913	2,028	2,151	2,280	2,418	2,564	2,719	2,883	3,057	3,241
Other	52	53	54	54	55	56	57	57	58	59
Unaccounted	2,737	2,777	2,817	2,858	2,900	2,943	2,986	3,031	3,076	3,122
Total	34,704	35,273	35,855	36,451	37,061	37,686	38,327	38,984	39,657	40,349

California Water Service Company - Chico-Hamilton City District
Water Supply and Demand Analysis and Projections

2020's Projections

Scenario #2: Based on Maintaining Growth at the 10-Year 5-Year Average Annual Growth and Low Average High Demand per Service for each Customer Class.

Customer Type	Projected Services 2,021	Projected Services 2,022	Projected Services 2,023	Projected Services 2,024	Projected Services 2,025	Projected Services 2,026	Projected Services 2,027	Projected Services 2,028	Projected Services 2,029	Projected Services 2,030
Residential	26,728	27,094	27,465	27,841	28,223	28,609	29,001	29,398	29,801	30,209
Multi-Residential	904	916	929	942	955	968	981	995	1,009	1,023
Commercial	3,564	3,613	3,663	3,714	3,765	3,817	3,870	3,924	3,978	4,034
Industrial	29	30	30	31	31	32	32	32	33	33
Government	899	953	1,011	1,072	1,136	1,205	1,278	1,355	1,436	1,523
Other	34	35	35	36	36	37	37	38	38	39
Total	32,157	32,640	33,133	33,635	34,146	34,668	35,200	35,742	36,296	36,861

Customer Type	Demand 2021(ccf)	Demand 2022(ccf)	Demand 2023(ccf)	Demand 2024(ccf)	Demand 2025(ccf)	Demand 2026(ccf)	Demand 2027(ccf)	Demand 2028(ccf)	Demand 2029(ccf)	Demand 2030(ccf)
Residential	10,031,301	10,168,729	10,308,041	10,449,261	10,592,416	10,737,532	10,884,636	11,033,756	11,184,918	11,338,152
Multi-Residential	2,201,937	2,232,455	2,263,397	2,294,768	2,326,573	2,358,820	2,391,513	2,424,659	2,458,265	2,492,337
Commercial	2,655,067	2,691,866	2,729,175	2,767,001	2,805,352	2,844,234	2,883,655	2,923,623	2,964,144	3,005,227
Industrial	93,493	94,789	96,103	97,435	98,785	100,155	101,543	102,950	104,377	105,824
Government	1,497,018	1,587,348	1,683,128	1,784,688	1,892,376	2,006,562	2,127,638	2,256,020	2,392,148	2,536,490
Other	26,064	26,425	26,791	27,163	27,539	27,921	28,308	28,700	29,098	29,501
Unaccounted	1,380,123	1,400,862	1,421,993	1,443,529	1,465,483	1,487,867	1,510,696	1,533,984	1,557,745	1,581,996
Total	17,885,002	18,202,474	18,528,628	18,863,845	19,208,525	19,563,091	19,927,989	20,303,692	20,690,695	21,089,527

Customer Type	Demand 2021(AF)	Demand 2022(AF)	Demand 2023(AF)	Demand 2024(AF)	Demand 2025(AF)	Demand 2026(AF)	Demand 2027(AF)	Demand 2028(AF)	Demand 2029(AF)	Demand 2030(AF)
Residential	23,029	23,344	23,664	23,988	24,317	24,650	24,988	25,330	25,677	26,029
Multi-Residential	5,055	5,125	5,196	5,268	5,341	5,415	5,490	5,566	5,643	5,722
Commercial	6,095	6,180	6,265	6,352	6,440	6,530	6,620	6,712	6,805	6,899
Industrial	215	218	221	224	227	230	233	236	240	243
Government	3,437	3,644	3,864	4,097	4,344	4,606	4,884	5,179	5,492	5,823
Other	60	61	62	62	63	64	65	66	67	68
Unaccounted	3,168	3,216	3,264	3,314	3,364	3,416	3,468	3,522	3,576	3,632
Total	41,059	41,787	42,536	43,306	44,097	44,911	45,749	46,611	47,500	48,415

California Water Service Company - Chico-Hamilton City District
Water Supply and Demand Analysis and Projections

2030's Projections

Scenario #2: Based on Maintaining Growth at the 10-Year 5-Year Average Annual Growth and Low Average High Demand per Service for each Customer Class.

Customer Type	Projected Services 2,031	Projected Services 2,032	Projected Services 2,033	Projected Services 2,034	Projected Services 2,035	Projected Services 2,036	Projected Services 2,037	Projected Services 2,038	Projected Services 2,039	Projected Services 2,040
Residential	30,623	31,043	31,468	31,899	32,336	32,779	33,228	33,684	34,145	34,613
Multi-Residential	1,037	1,051	1,066	1,081	1,096	1,111	1,126	1,142	1,158	1,174
Commercial	4,089	4,146	4,204	4,262	4,321	4,381	4,442	4,503	4,566	4,629
Industrial	34	34	35	35	36	36	37	37	38	38
Government	1,615	1,712	1,816	1,925	2,041	2,165	2,295	2,434	2,581	2,736
Other	39	40	40	41	41	42	43	43	44	44
Total	37,438	38,027	38,628	39,243	39,872	40,514	41,171	41,843	42,530	43,234

Customer Type	Demand 2031(ccf)	Demand 2032(ccf)	Demand 2033(ccf)	Demand 2034(ccf)	Demand 2035(ccf)	Demand 2036(ccf)	Demand 2037(ccf)	Demand 2038(ccf)	Demand 2039(ccf)	Demand 2040(ccf)
Residential	11,493,484	11,650,945	11,810,563	11,972,368	12,136,389	12,302,658	12,471,204	12,642,060	12,815,256	12,990,825
Multi-Residential	2,526,881	2,561,903	2,597,411	2,633,411	2,669,910	2,706,915	2,744,433	2,782,471	2,821,036	2,860,136
Commercial	3,046,880	3,089,109	3,131,924	3,175,333	3,219,343	3,263,963	3,309,202	3,355,067	3,401,568	3,448,714
Industrial	107,290	108,777	110,285	111,814	113,363	114,935	116,528	118,143	119,780	121,440
Government	2,689,542	2,851,829	3,023,908	3,206,371	3,399,843	3,604,990	3,822,515	4,053,166	4,297,734	4,557,059
Other	29,910	30,325	30,745	31,171	31,603	32,041	32,485	32,935	33,392	33,855
Unaccounted	1,606,753	1,632,034	1,657,857	1,684,241	1,711,206	1,738,773	1,766,966	1,795,806	1,825,319	1,855,532
Total	21,500,740	21,924,923	22,362,694	22,814,708	23,281,658	23,764,275	24,263,332	24,779,647	25,314,085	25,867,560

Customer Type	Demand 2031(AF)	Demand 2032(AF)	Demand 2033(AF)	Demand 2034(AF)	Demand 2035(AF)	Demand 2036(AF)	Demand 2037(AF)	Demand 2038(AF)	Demand 2039(AF)	Demand 2040(AF)
Residential	26,386	26,747	27,114	27,485	27,862	28,243	28,630	29,022	29,420	29,823
Multi-Residential	5,801	5,881	5,963	6,046	6,129	6,214	6,300	6,388	6,476	6,566
Commercial	6,995	7,092	7,190	7,290	7,391	7,493	7,597	7,702	7,809	7,917
Industrial	246	250	253	257	260	264	268	271	275	279
Government	6,174	6,547	6,942	7,361	7,805	8,276	8,775	9,305	9,866	10,462
Other	69	70	71	72	73	74	75	76	77	78
Unaccounted	3,689	3,747	3,806	3,867	3,928	3,992	4,056	4,123	4,190	4,260
Total	49,359	50,333	51,338	52,376	53,448	54,556	55,701	56,887	58,114	59,384

California Water Service Company - Chico-Hamilton City District
Water Supply and Demand Analysis and Projections

Scenario #3: Based on Maintaining Growth at the 10-Year 5-Year Average Annual Growth and Low Average High Demand per Service for each Customer Class.

Summary of Historical Growth Rate from Worksheet 2			
Customer Type	5 Yr. Avg. Historical Growth Rate	Individual Growth Rate Selected	Notes
Single Family Residential	1.370%	1.370%	Historical growth rate used
Multi Family Residential	13.726%	1.386%	Overall growth rate used
Commercial	-0.686%	1.386%	Overall growth rate used
Industrial	-6.652%	1.386%	Overall growth rate used
Government	6.034%	6.034%	Historical growth rate used
Other	-8.294%	1.386%	Overall growth rate used
Overall	1.386%	1.535%	

Summary of Maximum Demand per Service from Worksheets 5 and 6									
Demand/Serv. Units	Multi-Residential						Total Other	Unaccounted Total Serv.	Combined Demand/Serv.
	Residential	(service)	(unit)	Commercial	Industrial	Government			
Gal/Service/Yr	342,462	2,014,734	100,934	623,568	5,457,129	1,481,512	1,284,705	36,922	461,519
AF/Service/Yr	1.051	6.183	0.310	1.914	16.747	4.547	3.943	0.113	1.416
Gal/Service/Day	938	5,520	277	1,708	14,951	4,059	3,520	101	1,264

California Water Service Company - Chico-Hamilton City District
Water Supply and Demand Analysis and Projections

30-year projection Summary

Scenario #3: Based on Maintaining Growth at the 10-Year 5-Year Average Annual Growth and Low Average High Demand per Service for each Customer Class.

Customer Type	Projected Services 2010	Projected Services 2015	Projected Services 2020	Projected Services 2025	Projected Services 2030	Projected Services 2035	Projected Services 2040	Services projected to be added from 2010 - 2040
Single Family Residential	23,012	24,632	26,366	28,223	30,209	32,336	34,613	11,601
Multi Family Residential	777	832	891	955	1,023	1,096	1,174	397
Commercial	3,063	3,281	3,515	3,765	4,034	4,321	4,629	1,566
Industrial	25	27	29	31	33	36	38	13
Government	472	632	848	1,136	1,523	2,041	2,736	2,264
Other	29	31	34	36	39	41	44	15
Total	27,378	29,436	31,683	34,146	36,861	39,872	43,234	15,856

Customer Type	Projected Demand 2010 (ccf)	Projected Demand 2015 (ccf)	Projected Demand 2020 (ccf)	Projected Demand 2025 (ccf)	Projected Demand 2030 (ccf)	Projected Demand 2035 (ccf)	Projected Demand 2040 (ccf)	Projected demand to be added from 2010 - 2040 (ccf)
Single Family Residential	10,534,956	11,276,646	12,070,553	12,920,354	13,829,983	14,803,652	15,845,870	5,310,915
Multi Family Residential	2,091,659	2,240,685	2,400,329	2,571,347	2,754,550	2,950,806	3,161,044	1,069,385
Commercial	2,553,166	2,735,073	2,929,941	3,138,693	3,362,318	3,601,876	3,858,502	1,305,336
Industrial	184,905	198,079	212,192	227,310	243,505	260,855	279,440	94,535
Government	934,494	1,252,571	1,678,913	2,250,370	3,016,335	4,043,015	5,419,149	4,484,654
Other	50,495	54,092	57,946	62,075	66,498	71,235	76,311	25,816
Unaccounted	1,351,293	1,452,877	1,563,765	1,685,341	1,819,334	1,967,928	2,133,906	782,614
Total	17,700,967	19,210,024	20,913,640	22,855,490	25,092,523	27,699,367	30,774,222	13,073,255

Customer Type	Projected Demand 2010 (AF)	Projected Demand 2015 (AF)	Projected Demand 2020 (AF)	Projected Demand 2025 (AF)	Projected Demand 2030 (AF)	Projected Demand 2035 (AF)	Projected Demand 2040 (AF)	Projected demand to be added from 2010 - 2040 (AF)
Single Family Residential	24,185	25,888	27,710	29,661	31,749	33,985	36,377	12,192
Multi Family Residential	4,802	5,144	5,510	5,903	6,324	6,774	7,257	2,455
Commercial	5,861	6,279	6,726	7,205	7,719	8,269	8,858	2,997
Industrial	424	455	487	522	559	599	642	217
Government	2,145	2,876	3,854	5,166	6,925	9,282	12,441	10,295
Other	116	124	133	143	153	164	175	59
Unaccounted	3,102	3,335	3,590	3,869	4,177	4,518	4,899	1,797
Total	40,636	44,100	48,011	52,469	57,605	63,589	70,648	30,012

California Water Service Company - Chico-Hamilton City District
Water Supply and Demand Analysis and Projections

2000's Projections

Scenario #3: Based on Maintaining Growth at the 10-Year 5-Year Average Annual Growth and Low Average High Demand per Service for each Customer Class.

Customer Type	Actual Services 2001	Actual Services 2002	Actual Services 2003	Actual Services 2004	Actual Services 2005	Actual Services 2006	Actual Services 2007	Actual Services 2008	Actual Services 2009	Projected Services 2010
Residential	19,454	20,017	20,497	21,212	21,761	22,182	22,568	22,732	22,701	23,012
Multi-Residential	422	428	428	426	426	424	423	592	766	777
Commercial	2,960	3,016	3,074	3,135	3,217	3,260	3,310	3,146	3,021	3,063
Industrial	35	35	36	36	35	36	36	30	25	25
Government	344	344	344	340	342	341	340	349	445	472
Other	36	36	42	47	50	50	48	41	29	29
Total	23,251	23,876	24,421	25,196	25,831	26,293	26,725	26,890	26,987	27,378

Customer Type	Demand 2001(ccf)	Demand 2002(ccf)	Demand 2003(ccf)	Demand 2004(ccf)	Demand 2005(ccf)	Demand 2006(ccf)	Demand 2007(ccf)	Demand 2008(ccf)	Demand 2009(ccf)	Demand 2010(ccf)
Residential	8,906,092	9,163,835	9,383,580	9,710,909	9,962,243	10,154,978	10,331,689	10,406,884	10,392,577	10,534,956
Multi-Residential	1,136,571	1,152,731	1,152,731	1,147,344	1,147,344	1,141,958	1,139,264	1,594,431	2,063,065	2,091,659
Commercial	2,467,414	2,514,095	2,562,443	2,613,291	2,681,645	2,717,490	2,759,169	2,622,461	2,518,263	2,553,166
Industrial	255,328	255,328	262,623	262,623	255,328	262,623	262,623	218,853	182,377	184,905
Government	681,287	681,287	681,287	673,365	677,326	675,345	673,365	691,189	881,316	934,494
Other	61,826	61,826	72,131	80,717	85,870	85,870	82,435	70,413	49,804	50,495
Unaccounted	1,147,593	1,178,441	1,205,340	1,243,592	1,274,933	1,297,736	1,319,058	1,327,214	1,331,990	1,351,293
Total	14,656,111	15,007,543	15,320,135	15,731,842	16,084,689	16,335,999	16,567,604	16,931,445	17,419,392	17,700,967

Customer Type	Demand 2001(AF)	Demand 2002(AF)	Demand 2003(AF)	Demand 2004(AF)	Demand 2005(AF)	Demand 2006(AF)	Demand 2007(AF)	Demand 2008(AF)	Demand 2009(AF)	Demand 2010(AF)
Residential	20,446	21,037	21,542	22,293	22,870	23,313	23,718	23,891	23,858	24,185
Multi-Residential	2,609	2,646	2,646	2,634	2,634	2,622	2,615	3,660	4,736	4,802
Commercial	5,664	5,772	5,883	5,999	6,156	6,239	6,334	6,020	5,781	5,861
Industrial	586	586	603	603	586	603	603	502	419	424
Government	1,564	1,564	1,564	1,546	1,555	1,550	1,546	1,587	2,023	2,145
Other	142	142	166	185	197	197	189	162	114	116
Unaccounted	2,635	2,705	2,767	2,855	2,927	2,979	3,028	3,047	3,058	3,102
Total	33,646	34,453	35,170	36,116	36,926	37,503	38,034	38,870	39,990	40,636

California Water Service Company - Chico-Hamilton City District
Water Supply and Demand Analysis and Projections

2010's Projections

Scenario #3: Based on Maintaining Growth at the 10-Year 5-Year Average Annual Growth and Low Average High Demand per Service for each Customer Class.

Customer Type	Projected Services 2011	Projected Services 2012	Projected Services 2013	Projected Services 2014	Projected Services 2015	Projected Services 2016	Projected Services 2017	Projected Services 2018	Projected Services 2019	Projected Services 2020
Residential	23,327	23,647	23,971	24,299	24,632	24,970	25,312	25,658	26,010	26,366
Multi-Residential	787	798	809	821	832	843	855	867	879	891
Commercial	3,105	3,148	3,192	3,236	3,281	3,327	3,373	3,419	3,467	3,515
Industrial	26	26	26	27	27	28	28	28	29	29
Government	500	531	563	596	632	671	711	754	799	848
Other	30	30	31	31	31	32	32	33	33	34
Total	27,776	28,180	28,592	29,010	29,436	29,870	30,311	30,760	31,217	31,683

Customer Type	Demand 2011(ccf)	Demand 2012(ccf)	Demand 2013(ccf)	Demand 2014(ccf)	Demand 2015(ccf)	Demand 2016(ccf)	Demand 2017(ccf)	Demand 2018(ccf)	Demand 2019(ccf)	Demand 2020(ccf)
Residential	10,679,284	10,825,591	10,973,901	11,124,244	11,276,646	11,431,136	11,587,742	11,746,494	11,907,421	12,070,553
Multi-Residential	2,120,649	2,150,042	2,179,841	2,210,054	2,240,685	2,271,741	2,303,227	2,335,150	2,367,515	2,400,329
Commercial	2,588,553	2,624,430	2,660,805	2,697,683	2,735,073	2,772,981	2,811,415	2,850,381	2,889,887	2,929,941
Industrial	187,468	190,066	192,700	195,371	198,079	200,824	203,608	206,430	209,291	212,192
Government	990,882	1,050,672	1,114,069	1,181,292	1,252,571	1,328,151	1,408,292	1,493,268	1,583,372	1,678,913
Other	51,195	51,904	52,623	53,353	54,092	54,842	55,602	56,373	57,154	57,946
Unaccounted	1,370,922	1,390,887	1,411,195	1,431,855	1,452,877	1,474,270	1,496,045	1,518,212	1,540,781	1,563,765
Total	17,988,953	18,283,591	18,585,135	18,893,852	19,210,024	19,533,947	19,865,932	20,206,308	20,555,423	20,913,640

Customer Type	Demand 2011(AF)	Demand 2012(AF)	Demand 2013(AF)	Demand 2014(AF)	Demand 2015(AF)	Demand 2016(AF)	Demand 2017(AF)	Demand 2018(AF)	Demand 2019(AF)	Demand 2020(AF)
Residential	24,516	24,852	25,193	25,538	25,888	26,242	26,602	26,966	27,336	27,710
Multi-Residential	4,868	4,936	5,004	5,074	5,144	5,215	5,288	5,361	5,435	5,510
Commercial	5,943	6,025	6,108	6,193	6,279	6,366	6,454	6,544	6,634	6,726
Industrial	430	436	442	449	455	461	467	474	480	487
Government	2,275	2,412	2,558	2,712	2,876	3,049	3,233	3,428	3,635	3,854
Other	118	119	121	122	124	126	128	129	131	133
Unaccounted	3,147	3,193	3,240	3,287	3,335	3,384	3,434	3,485	3,537	3,590
Total	41,297	41,974	42,666	43,375	44,100	44,844	45,606	46,388	47,189	48,011

California Water Service Company - Chico-Hamilton City District
Water Supply and Demand Analysis and Projections

2010's Projections

Scenario #3: Based on Maintaining Growth at the 10-Year 5-Year Average Annual Growth and Low Average High Demand per Service for each Customer Class.

Customer Type	Projected Services 2,021	Projected Services 2,022	Projected Services 2,023	Projected Services 2,024	Projected Services 2,025	Projected Services 2,026	Projected Services 2,027	Projected Services 2,028	Projected Services 2,029	Projected Services 2,030
Residential	26,728	27,094	27,465	27,841	28,223	28,609	29,001	29,398	29,801	30,209
Multi-Residential	904	916	929	942	955	968	981	995	1,009	1,023
Commercial	3,564	3,613	3,663	3,714	3,765	3,817	3,870	3,924	3,978	4,034
Industrial	29	30	30	31	31	32	32	32	33	33
Government	899	953	1,011	1,072	1,136	1,205	1,278	1,355	1,436	1,523
Other	34	35	35	36	36	37	37	38	38	39
Total	32,157	32,640	33,133	33,635	34,146	34,668	35,200	35,742	36,296	36,861

Customer Type	Demand 2021(ccf)	Demand 2022(ccf)	Demand 2023(ccf)	Demand 2024(ccf)	Demand 2025(ccf)	Demand 2026(ccf)	Demand 2027(ccf)	Demand 2028(ccf)	Demand 2029(ccf)	Demand 2030(ccf)
Residential	12,235,920	12,403,552	12,573,480	12,745,737	12,920,354	13,097,363	13,276,796	13,458,689	13,643,073	13,829,983
Multi-Residential	2,433,598	2,467,327	2,501,524	2,536,196	2,571,347	2,606,986	2,643,119	2,679,752	2,716,894	2,754,550
Commercial	2,970,550	3,011,722	3,053,464	3,095,785	3,138,693	3,182,195	3,226,301	3,271,017	3,316,353	3,362,318
Industrial	215,133	218,114	221,138	224,203	227,310	230,460	233,655	236,893	240,176	243,505
Government	1,780,219	1,887,637	2,001,537	2,122,310	2,250,370	2,386,157	2,530,138	2,682,806	2,844,687	3,016,335
Other	58,749	59,564	60,389	61,226	62,075	62,935	63,807	64,692	65,588	66,498
Unaccounted	1,587,175	1,611,025	1,635,326	1,660,093	1,685,341	1,711,083	1,737,337	1,764,118	1,791,445	1,819,334
Total	21,281,344	21,658,941	22,046,859	22,445,550	22,855,490	23,277,180	23,711,153	24,157,968	24,618,216	25,092,523

Customer Type	Demand 2021(AF)	Demand 2022(AF)	Demand 2023(AF)	Demand 2024(AF)	Demand 2025(AF)	Demand 2026(AF)	Demand 2027(AF)	Demand 2028(AF)	Demand 2029(AF)	Demand 2030(AF)
Residential	28,090	28,475	28,865	29,260	29,661	30,068	30,480	30,897	31,320	31,749
Multi-Residential	5,587	5,664	5,743	5,822	5,903	5,985	6,068	6,152	6,237	6,324
Commercial	6,819	6,914	7,010	7,107	7,205	7,305	7,407	7,509	7,613	7,719
Industrial	494	501	508	515	522	529	536	544	551	559
Government	4,087	4,333	4,595	4,872	5,166	5,478	5,808	6,159	6,531	6,925
Other	135	137	139	141	143	144	146	149	151	153
Unaccounted	3,644	3,698	3,754	3,811	3,869	3,928	3,988	4,050	4,113	4,177
Total	48,856	49,722	50,613	51,528	52,469	53,437	54,434	55,459	56,516	57,605

California Water Service Company - Chico-Hamilton City District
Water Supply and Demand Analysis and Projections

2030's Projections

Scenario #3: Based on Maintaining Growth at the 10-Year 5-Year Average Annual Growth and Low Average High Demand per Service for each Customer Class.

Customer Type	Projected Services 2,031	Projected Services 2,032	Projected Services 2,033	Projected Services 2,034	Projected Services 2,035	Projected Services 2,036	Projected Services 2,037	Projected Services 2,038	Projected Services 2,039	Projected Services 2,040
Residential	30,623	31,043	31,468	31,899	32,336	32,779	33,228	33,684	34,145	34,613
Multi-Residential	1,037	1,051	1,066	1,081	1,096	1,111	1,126	1,142	1,158	1,174
Commercial	4,089	4,146	4,204	4,262	4,321	4,381	4,442	4,503	4,566	4,629
Industrial	34	34	35	35	36	36	37	37	38	38
Government	1,615	1,712	1,816	1,925	2,041	2,165	2,295	2,434	2,581	2,736
Other	39	40	40	41	41	42	43	43	44	44
Total	37,438	38,027	38,628	39,243	39,872	40,514	41,171	41,843	42,530	43,234

Customer Type	Demand 2031(ccf)	Demand 2032(ccf)	Demand 2033(ccf)	Demand 2034(ccf)	Demand 2035(ccf)	Demand 2036(ccf)	Demand 2037(ccf)	Demand 2038(ccf)	Demand 2039(ccf)	Demand 2040(ccf)
Residential	14,019,453	14,211,520	14,406,218	14,603,583	14,803,652	15,006,462	15,212,051	15,420,456	15,631,716	15,845,870
Multi-Residential	2,792,728	2,831,435	2,870,679	2,910,467	2,950,806	2,991,704	3,033,169	3,075,209	3,117,831	3,161,044
Commercial	3,408,920	3,456,167	3,504,070	3,552,636	3,601,876	3,651,798	3,702,412	3,753,727	3,805,754	3,858,502
Industrial	246,880	250,302	253,771	257,289	260,855	264,470	268,136	271,852	275,620	279,440
Government	3,198,341	3,391,329	3,595,962	3,812,942	4,043,015	4,286,971	4,545,646	4,819,931	5,110,765	5,419,149
Other	67,419	68,354	69,301	70,261	71,235	72,223	73,224	74,239	75,267	76,311
Unaccounted	1,847,805	1,876,879	1,906,576	1,936,918	1,967,928	1,999,631	2,032,053	2,065,221	2,099,162	2,133,906
Total	25,581,547	26,085,986	26,606,576	27,144,096	27,699,367	28,273,258	28,866,690	29,480,633	30,116,115	30,774,222

Customer Type	Demand 2031(AF)	Demand 2032(AF)	Demand 2033(AF)	Demand 2034(AF)	Demand 2035(AF)	Demand 2036(AF)	Demand 2037(AF)	Demand 2038(AF)	Demand 2039(AF)	Demand 2040(AF)
Residential	32,184	32,625	33,072	33,525	33,985	34,450	34,922	35,401	35,886	36,377
Multi-Residential	6,411	6,500	6,590	6,682	6,774	6,868	6,963	7,060	7,158	7,257
Commercial	7,826	7,934	8,044	8,156	8,269	8,383	8,500	8,617	8,737	8,858
Industrial	567	575	583	591	599	607	616	624	633	642
Government	7,342	7,785	8,255	8,753	9,282	9,842	10,435	11,065	11,733	12,441
Other	155	157	159	161	164	166	168	170	173	175
Unaccounted	4,242	4,309	4,377	4,447	4,518	4,591	4,665	4,741	4,819	4,899
Total	58,728	59,886	61,081	62,315	63,589	64,907	66,269	67,679	69,138	70,648

California Water Service Company - Chico-Hamilton City District

Water Supply and Demand Analysis and Projections

Scenario #4: Based on Maintaining Growth at the 10-Year Average Annual Growth
 5-Year

Summary of Historical Growth Rate from Worksheet 2			
Customer Type	10 Yr. Avg. Historical Growth Rate	Individual Growth Rate Selected	Notes
Single Family Residential	2.099%	2.099%	Historical growth rate used
Multi Family Residential	7.030%	7.030%	Historical growth rate used
Commercial	0.329%	0.329%	Historical growth rate used
Industrial	-3.581%	1.998%	Overall growth rate used
Government	5.216%	5.216%	Historical growth rate used
Other	-0.381%	-0.381%	Historical growth rate used
Overall	1.998%	2.336%	

California Water Service Company - Chico-Hamilton City District
Water Supply and Demand Analysis and Projections

30-year projection Summary

Scenario #4: Based on Maintaining Growth at the 10-Year Average Annual Growth
 5-Year

Customer Type	Projected Services 2010	Projected Services 2015	Projected Services 2020	Projected Services 2025	Projected Services 2030	Projected Services 2035	Projected Services 2040	Services projected to be added from 2010 - 2040
Single Family Residential	23,177	25,714	28,529	31,651	35,115	38,959	43,223	20,045
Multi Family Residential	820	1,151	1,617	2,272	3,190	4,481	6,294	5,474
Commercial	3,031	3,081	3,132	3,184	3,237	3,290	3,345	314
Industrial	25	28	31	34	38	42	46	21
Government	468	604	779	1,004	1,294	1,669	2,152	1,684
Other	29	28	28	27	27	26	26	-3
Total	27,551	30,607	34,115	38,172	42,901	48,467	55,085	27,534

California Water Service Company - Chico-Hamilton City District

Water Supply and Demand Analysis and Projections

2000's Projections

Scenario #4: Based on Maintaining Growth at the 10-Year Average Annual Growth
 5-Year

Customer Type	Actual Services 2001	Actual Services 2002	Actual Services 2003	Actual Services 2004	Actual Services 2005	Actual Services 2006	Actual Services 2007	Actual Services 2008	Actual Services 2009	Projected Services 2010
Residential	19,454	20,017	20,497	21,212	21,761	22,182	22,568	22,732	22,701	23,177
Multi-Residential	422	428	428	426	426	424	423	592	766	820
Commercial	2,960	3,016	3,074	3,135	3,217	3,260	3,310	3,146	3,021	3,031
Industrial	35	35	36	36	35	36	36	30	25	25
Government	344	344	344	340	342	341	340	349	445	468
Other	36	36	42	47	50	50	48	41	29	29
Total	23,251	23,876	24,421	25,196	25,831	26,293	26,725	26,890	26,987	27,551

2010's Projections

Customer Type	Projected Services 2011	Projected Services 2012	Projected Services 2013	Projected Services 2014	Projected Services 2015	Projected Services 2016	Projected Services 2017	Projected Services 2018	Projected Services 2019	Projected Services 2020
Residential	23,664	24,161	24,668	25,186	25,714	26,254	26,805	27,368	27,942	28,529
Multi-Residential	877	939	1,005	1,076	1,151	1,232	1,319	1,412	1,511	1,617
Commercial	3,041	3,051	3,061	3,071	3,081	3,091	3,101	3,112	3,122	3,132
Industrial	26	27	27	28	28	29	29	30	30	31
Government	493	518	545	574	604	635	668	703	740	779
Other	29	29	29	28	28	28	28	28	28	28
Total	28,130	28,724	29,335	29,962	30,607	31,270	31,951	32,652	33,373	34,115

California Water Service Company - Chico-Hamilton City District
Water Supply and Demand Analysis and Projections

Worksheet 13

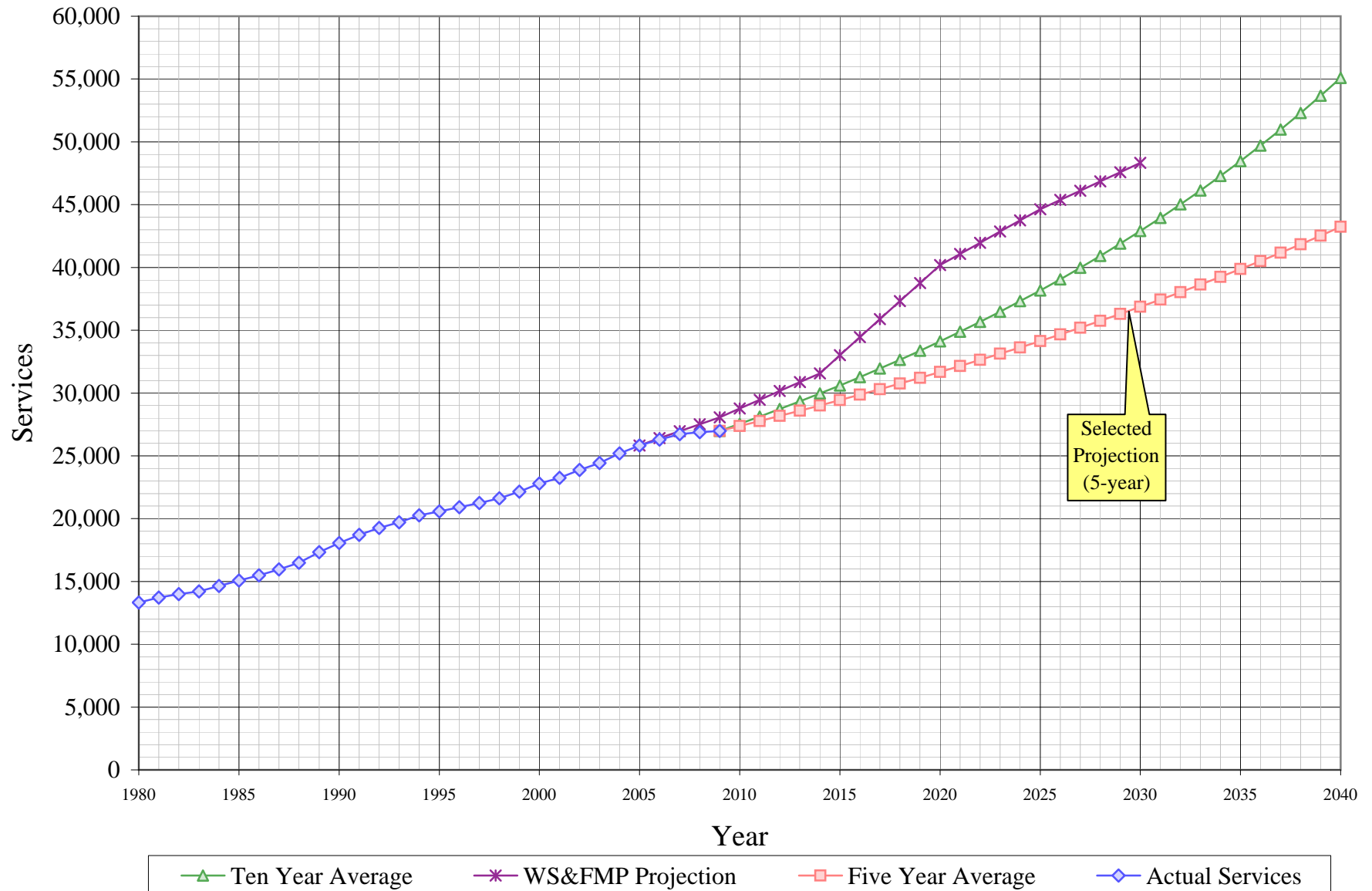
2020's Projections

Customer Type	Projected Services 2021	Projected Services 2022	Projected Services 2023	Projected Services 2024	Projected Services 2025	Projected Services 2026	Projected Services 2027	Projected Services 2028	Projected Services 2029	Projected Services 2030
Residential	29,127	29,739	30,363	31,000	31,651	32,315	32,994	33,686	34,393	35,115
Multi-Residential	1,731	1,853	1,983	2,122	2,272	2,431	2,602	2,785	2,981	3,190
Commercial	3,142	3,153	3,163	3,174	3,184	3,194	3,205	3,216	3,226	3,237
Industrial	32	32	33	34	34	35	36	36	37	38
Government	819	862	907	954	1,004	1,056	1,111	1,169	1,230	1,294
Other	28	28	27	27	27	27	27	27	27	27
Total	34,879	35,666	36,476	37,311	38,172	39,060	39,975	40,920	41,895	42,901

2030's Projections

Customer Type	Projected Services 2031	Projected Services 2032	Projected Services 2033	Projected Services 2034	Projected Services 2035	Projected Services 2036	Projected Services 2037	Projected Services 2038	Projected Services 2039	Projected Services 2040
Residential	35,852	36,605	37,373	38,158	38,959	39,776	40,611	41,464	42,334	43,223
Multi-Residential	3,415	3,655	3,912	4,187	4,481	4,796	5,133	5,494	5,880	6,294
Commercial	3,247	3,258	3,269	3,280	3,290	3,301	3,312	3,323	3,334	3,345
Industrial	39	39	40	41	42	43	44	44	45	46
Government	1,362	1,433	1,508	1,586	1,669	1,756	1,848	1,944	2,046	2,152
Other	27	27	26	26	26	26	26	26	26	26
Total	43,942	45,017	46,128	47,278	48,467	49,698	50,974	52,295	53,665	55,085

Chico-Hamilton City District Historical & Projected Services

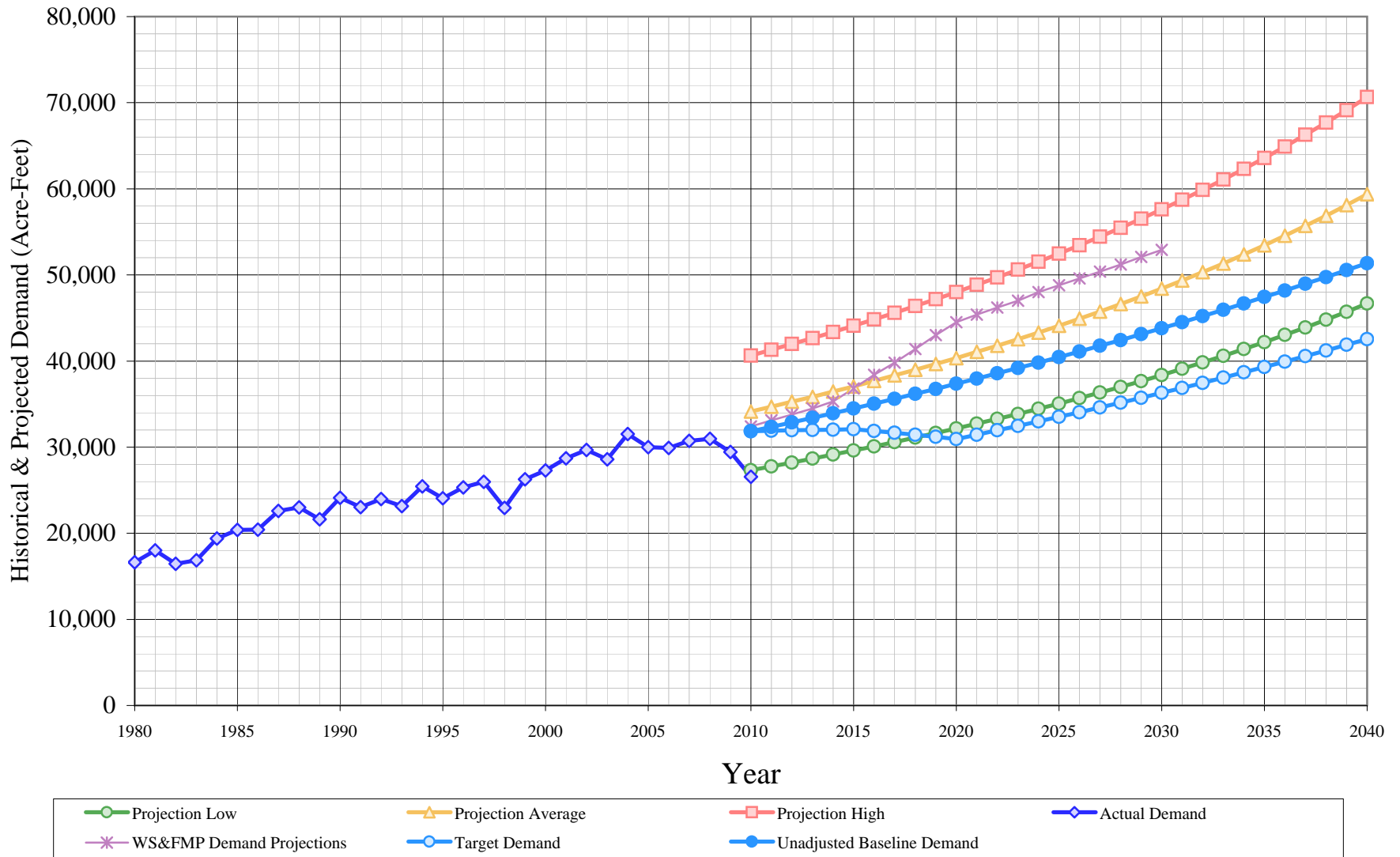


California Water Service Company - Chico-Hamilton City District
Water Supply and Demand Analysis and Projections
Actual & Projected Annual Average Services

Year	Actual Services	Projected Services		
		Five Year Average	Ten Year Average	WS&FMP
1980	13,331			
1981	13,717			
1982	13,999			
1983	14,207			
1984	14,644			
1985	15,078			
1986	15,489			
1987	15,952			
1988	16,490			
1989	17,333			
1990	18,052			
1991	18,710			
1992	19,255			
1993	19,721			
1994	20,271			
1995	20,585			
1996	20,903			
1997	21,236			
1998	21,624			
1999	22,151			
2000	22,791			
2001	23,251			
2002	23,876			
2003	24,421			
2004	25,196			
2005	25,831			25,830
2006	26,293			26,412
2007	26,725			26,963
2008	26,890			27,514
2009	26,987	26,987	26,987	28,065
2010		27,378	27,551	28,766

Year	Actual Services	Projected Services		
		Five Year Average	Ten Year Average	WS&FMP
2011		27,776	28,130	29,467
2012		28,180	28,724	30,168
2013		28,592	29,335	30,869
2014		29,010	29,962	31,570
2015		29,436	30,607	33,007
2016		29,870	31,270	34,444
2017		30,311	31,951	35,881
2018		30,760	32,652	37,318
2019		31,217	33,373	38,755
2020		31,683	34,115	40,192
2021		32,157	34,879	41,080
2022		32,640	35,666	41,968
2023		33,133	36,476	42,856
2024		33,635	37,311	43,744
2025		34,146	38,172	44,632
2026		34,668	39,060	45,370
2027		35,200	39,975	46,108
2028		35,742	40,920	46,846
2029		36,296	41,895	47,584
2030		36,861	42,901	48,322
2031		37,438	43,942	
2032		38,027	45,017	
2033		38,628	46,128	
2034		39,243	47,278	
2035		39,872	48,467	
2036		40,514	49,698	
2037		41,171	50,974	
2038		41,843	52,295	
2039		42,530	53,665	
2040		43,234	55,085	

Chico-Hamilton City District Historical & Projected Demand



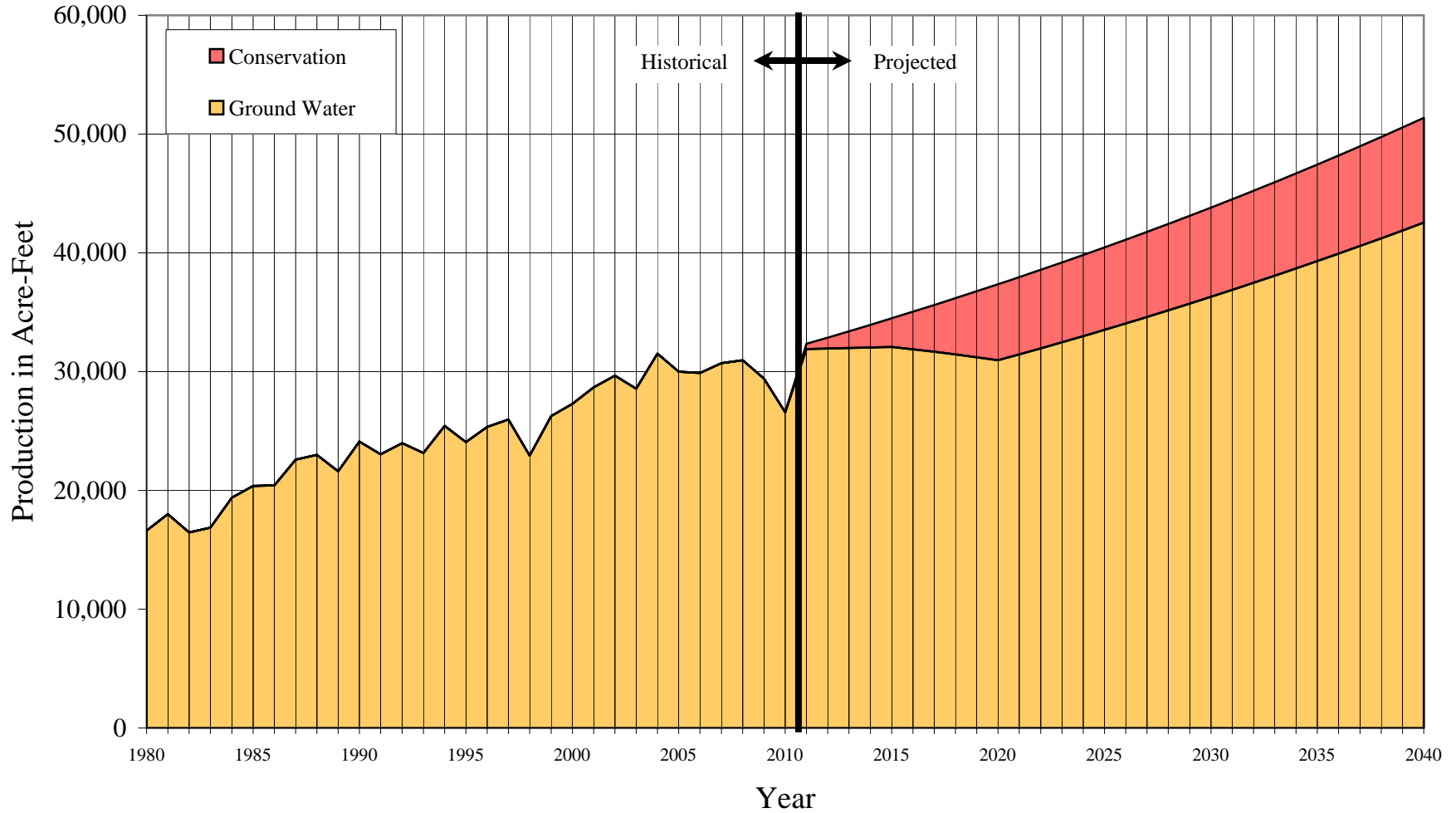
California Water Service Company - Chico-Hamilton City District
Water Supply and Demand Analysis and Projections
Actual & Projected Demand in Acre-Feet
Based on a Constant Growth Rate @ Five Year Average

Year	Actual Demand	Projection			Unadjusted Baseline Demand	Target Demand
		Low	Average	High		
1980	16,632					
1981	18,003					
1982	16,463					
1983	16,878					
1984	19,389					
1985	20,386					
1986	20,426					
1987	22,594					
1988	23,001					
1989	21,612					
1990	24,116					
1991	23,043					
1992	23,987					
1993	23,154					
1994	25,432					
1995	24,076					
1996	25,338					
1997	25,980					
1998	22,932					
1999	26,269					
2000	27,301					
2001	28,689					
2002	29,661					
2003	28,573					
2004	31,529					
2005	29,992					
2006	29,897					
2007	30,718					
2008	30,970					
2009	29,427					
2010	26,572	27,331	34,148	40,636	31,840	31,840

Year	Actual Demand	Projection			Unadjusted Baseline Demand	Target Demand
		Low	Average	High		
2011		27,767	34,704	41,297	32,351	31,896
2012		28,212	35,273	41,974	32,874	31,951
2013		28,667	35,855	42,666	33,403	31,997
2014		29,133	36,451	43,375	33,942	32,036
2015		29,609	37,061	44,100	34,490	32,069
2016		30,096	37,686	44,844	35,044	31,875
2017		30,595	38,327	45,606	35,611	31,669
2018		31,106	38,984	46,388	36,183	31,445
2019		31,629	39,657	47,189	36,765	31,206
2020		32,165	40,349	48,011	37,357	30,951
2021		32,715	41,059	48,856	37,957	31,448
2022		33,279	41,787	49,722	38,567	31,954
2023		33,857	42,536	50,613	39,190	32,469
2024		34,451	43,306	51,528	39,818	32,990
2025		35,060	44,097	52,469	40,459	33,521
2026		35,686	44,911	53,437	41,109	34,060
2027		36,330	45,749	54,434	41,769	34,606
2028		36,991	46,611	55,459	42,437	35,160
2029		37,671	47,500	56,516	43,119	35,725
2030		38,371	48,415	57,605	43,812	36,299
2031		39,092	49,359	58,728	44,515	36,881
2032		39,834	50,333	59,886	45,227	37,471
2033		40,599	51,338	61,081	45,955	38,074
2034		41,387	52,376	62,315	46,688	38,682
2035		42,201	53,448	63,589	47,438	39,303
2036		43,040	54,556	64,907	48,196	39,931
2037		43,906	55,701	66,269	48,970	40,573
2038		44,800	56,887	67,679	49,753	41,222
2039		45,725	58,114	69,138	50,549	41,881
2040		46,681	59,384	70,648	51,357	42,550

Chico - Hamilton City District

Historical and Projected Distribution of Demand by Source



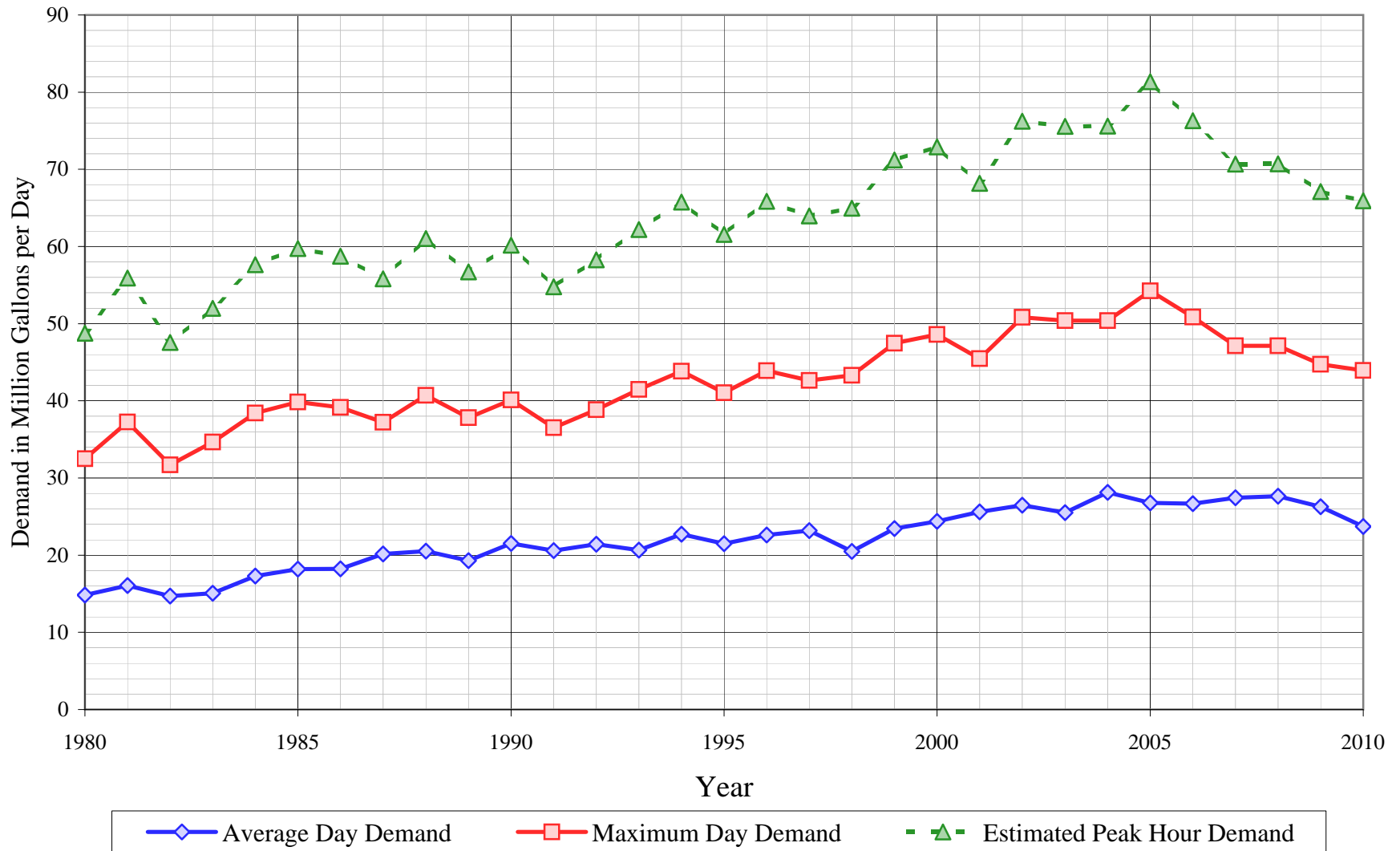
California Water Service Company - Chico - Hamilton City District
Water Supply and Demand Analysis and Projections
Historical and Projected Distribution of Demand by Source

Year	Purchased Water		Ground Water		Conservation		Total Supply	
	(kG)	(AF)	(kG)	(AF)	(kG)	(AF)	(kG)	(AF)
1980	0	0	5,419,708	16,632	0	0	5,419,708	16,632
1981	0	0	5,866,319	18,003	0	0	5,866,319	18,003
1982	0	0	5,364,380	16,463	0	0	5,364,380	16,463
1983	0	0	5,499,841	16,878	0	0	5,499,841	16,878
1984	0	0	6,317,855	19,389	0	0	6,317,855	19,389
1985	0	0	6,642,822	20,386	0	0	6,642,822	20,386
1986	0	0	6,655,751	20,426	0	0	6,655,751	20,426
1987	0	0	7,362,155	22,594	0	0	7,362,155	22,594
1988	0	0	7,494,843	23,001	0	0	7,494,843	23,001
1989	0	0	7,042,148	21,612	0	0	7,042,148	21,612
1990	0	0	7,858,195	24,116	0	0	7,858,195	24,116
1991	0	0	7,508,559	23,043	0	0	7,508,559	23,043
1992	0	0	7,816,244	23,987	0	0	7,816,244	23,987
1993	0	0	7,544,738	23,154	0	0	7,544,738	23,154
1994	0	0	8,287,160	25,432	0	0	8,287,160	25,432
1995	0	0	7,845,230	24,076	0	0	7,845,230	24,076
1996	0	0	8,256,464	25,338	0	0	8,256,464	25,338
1997	0	0	8,465,626	25,980	0	0	8,465,626	25,980
1998	0	0	7,472,382	22,932	0	0	7,472,382	22,932
1999	0	0	8,559,868	26,269	0	0	8,559,868	26,269
2000	0	0	8,896,210	27,301	0	0	8,896,210	27,301
2001	0	0	9,348,436	28,689	0	0	9,348,436	28,689
2002	0	0	9,664,909	29,661	0	0	9,664,909	29,661
2003	0	0	9,310,640	28,573	0	0	9,310,640	28,573
2004	0	0	10,273,700	31,529	0	0	10,273,700	31,529
2005	0	0	9,772,792	29,992	0	0	9,772,792	29,992
2006	0	0	9,742,050	29,897	0	0	9,742,050	29,897
2007	0	0	10,009,495	30,718	0	0	10,009,495	30,718
2008	0	0	10,091,543	30,970	0	0	10,091,543	30,970
2009	0	0	9,588,675	29,427	0	0	9,588,675	29,427
2010	0	0	8,658,435	26,572	0	0	8,658,435	26,572

Year	Purchased Water		Ground Water		Conservation Savings (SBx7-7 minus Scenario 2)		Total Supply	
	(kG)	(AF)	(kG)	(AF)	(kG)	(AF)	(kG)	(AF)
2011	0	0	10,393,508	31,896	147,952	454	10,541,461	32,351
2012	0	0	10,411,265	31,951	300,691	923	10,711,956	32,874
2013	0	0	10,426,169	31,997	458,300	1,406	10,884,469	33,403
2014	0	0	10,439,087	32,036	620,922	1,906	11,060,009	33,942
2015	0	0	10,449,892	32,069	788,683	2,420	11,238,575	34,490
2016	0	0	10,386,442	31,875	1,032,717	3,169	11,419,159	35,044
2017	0	0	10,319,264	31,669	1,284,515	3,942	11,603,778	35,611
2018	0	0	10,246,358	31,445	1,544,057	4,739	11,790,415	36,183
2019	0	0	10,168,458	31,206	1,811,621	5,560	11,980,079	36,765
2020	0	0	10,085,380	30,951	2,087,389	6,406	12,172,769	37,357
2021	0	0	10,247,535	31,448	2,120,950	6,509	12,368,486	37,957
2022	0	0	10,412,198	31,954	2,155,031	6,614	12,567,229	38,567
2023	0	0	10,580,204	32,469	2,189,803	6,720	12,770,008	39,190
2024	0	0	10,749,882	32,990	2,224,922	6,828	12,974,804	39,818
2025	0	0	10,922,903	33,521	2,260,732	6,938	13,183,636	40,459
2026	0	0	11,098,432	34,060	2,297,062	7,049	13,395,494	41,109
2027	0	0	11,276,468	34,606	2,333,910	7,162	13,610,379	41,769
2028	0	0	11,457,012	35,160	2,371,278	7,277	13,828,290	42,437
2029	0	0	11,640,899	35,725	2,409,337	7,394	14,050,237	43,119
2030	0	0	11,828,130	36,299	2,448,089	7,513	14,276,219	43,812
2031	0	0	12,017,868	36,881	2,487,359	7,633	14,505,227	44,515
2032	0	0	12,210,114	37,471	2,527,149	7,756	14,737,263	45,227
2033	0	0	12,406,539	38,074	2,567,803	7,880	14,974,342	45,955
2034	0	0	12,604,636	38,682	2,608,803	8,006	15,213,439	46,688
2035	0	0	12,806,912	39,303	2,650,669	8,135	15,457,581	47,438
2036	0	0	13,011,695	39,931	2,693,053	8,265	15,704,749	48,196
2037	0	0	13,220,658	40,573	2,736,303	8,397	15,956,961	48,970
2038	0	0	13,432,128	41,222	2,780,071	8,532	16,212,199	49,753
2039	0	0	13,646,942	41,881	2,824,531	8,668	16,471,474	50,549
2040	0	0	13,865,099	42,550	2,869,684	8,807	16,734,783	51,357

Chico-Hamilton City District

Average Day, Maximum Day, and Peak Demand



California Water Service Company - Chico - Hamilton City District

Worksheet 18

Water Supply and Demand Analysis and Projections

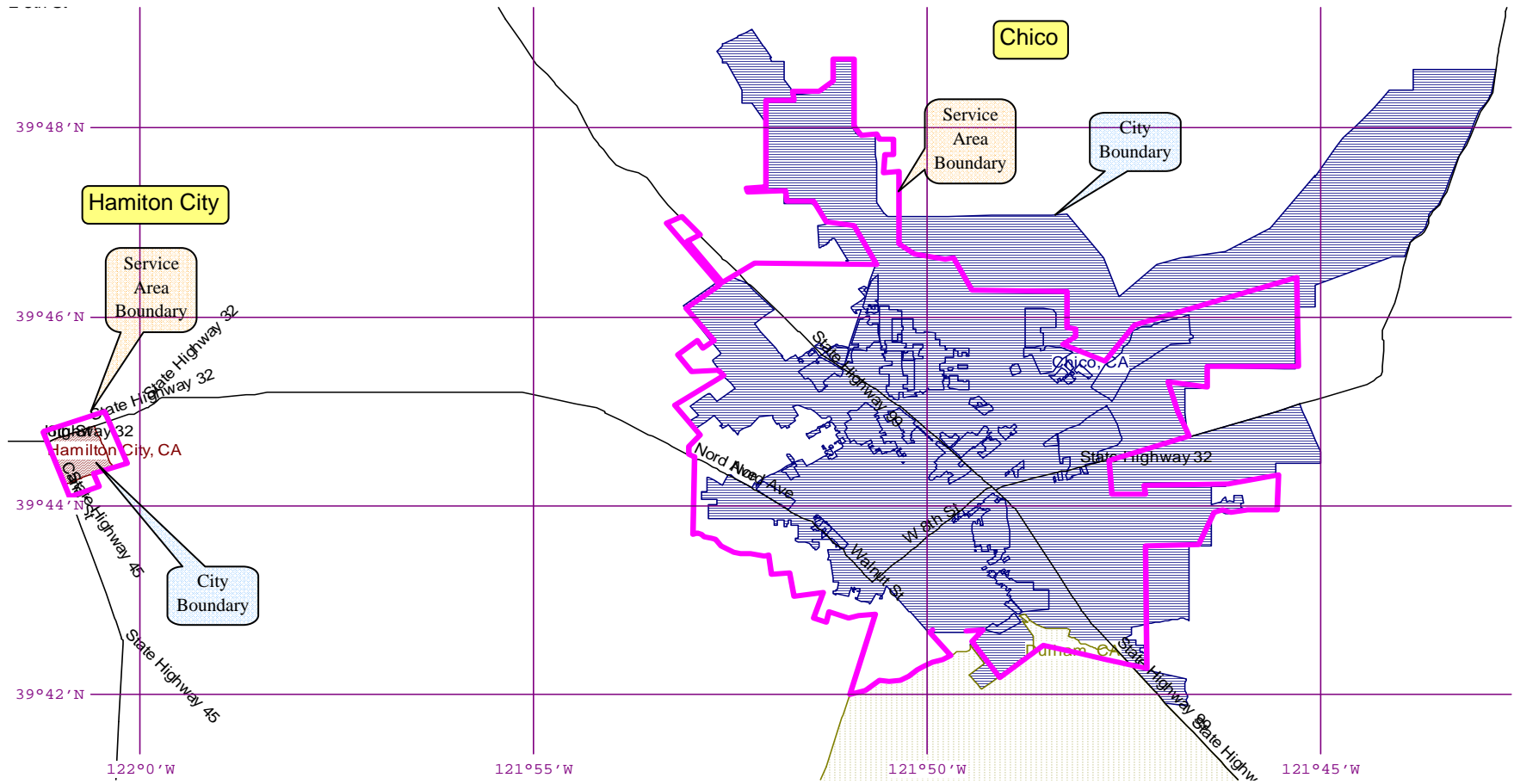
Historical and Projected Average Day, Maximum Day, and Peak Demand

Year	Historical Annual Demand		Average Day Demand		Maximum Day Demand		MDD ADD Ratio	Estimated Peak Hour Demand		PHD MDD Ratio	PHD ADD Ratio	Measured Peak Hour Demand		PHD MDD Ratio
	(AFY)	(MGY)	(MGD)	Per Service (GPD)	(MGD)	Per Service (GPD)		(MGD)	(GPM)			(MGD)	(GPM)	
1980	16,632	5,420	14.85	1,114	32.51	2,439	2.19	48.76	33,863	1.50	3.28			
1981	18,003	5,866	16.07	1,172	37.27	2,717	2.32	55.90	38,819	1.50	3.48			
1982	16,463	5,364	14.70	1,050	31.71	2,265	2.16	47.57	33,031	1.50	3.24			
1983	16,878	5,500	15.07	1,061	34.66	2,440	2.30	51.99	36,107	1.50	3.45			
1984	19,389	6,318	17.31	1,182	38.43	2,624	2.22	57.64	40,026	1.50	3.33			
1985	20,386	6,643	18.20	1,207	39.83	2,642	2.19	59.75	41,492	1.50	3.28			
1986	20,426	6,656	18.23	1,177	39.15	2,528	2.15	58.72	40,780	1.50	3.22			
1987	22,594	7,362	20.17	1,264	37.22	2,333	1.85	55.82	38,766	1.50	2.77			
1988	23,001	7,495	20.53	1,245	40.69	2,468	1.98	61.04	42,390	1.50	2.97			
1989	21,612	7,042	19.29	1,113	37.80	2,181	1.96	56.70	39,378	1.50	2.94			
1990	24,116	7,858	21.53	1,193	40.11	2,222	1.86	60.17	41,784	1.50	2.79			
1991	23,043	7,509	20.57	1,099	36.51	1,951	1.77	54.77	38,031	1.50	2.66			
1992	23,987	7,816	21.41	1,112	38.84	2,017	1.81	58.26	40,461	1.50	2.72			
1993	23,154	7,545	20.67	1,048	41.47	2,103	2.01	62.20	43,194	1.50	3.01			
1994	25,432	8,287	22.70	1,120	43.84	2,163	1.93	65.76	45,666	1.50	2.90			
1995	24,076	7,845	21.49	1,044	41.04	1,993	1.91	61.55	42,746	1.50	2.86			
1996	25,338	8,256	22.62	1,082	43.91	2,101	1.94	65.86	45,736	1.50	2.91			
1997	25,980	8,466	23.19	1,092	42.64	2,008	1.84	63.96	44,418	1.50	2.76			
1998	22,932	7,472	20.47	947	43.31	2,003	2.12	64.97	45,119	1.50	3.17			
1999	26,269	8,560	23.45	1,059	47.47	2,143	2.02	71.20	49,446	1.50	3.04			
2000	27,301	8,896	24.37	1,069	48.60	2,132	1.99	72.89	50,621	1.50	2.99			
2001	28,689	9,348	25.61	1,102	45.46	1,955	1.77	68.19	47,354	1.50	2.66			
2002	29,661	9,665	26.48	1,109	50.81	2,128	1.92	76.22	52,927	1.50	2.88			
2003	28,573	9,311	25.51	1,045	50.38	2,063	1.98	75.57	52,480	1.50	2.96			
2004	31,529	10,274	28.15	1,117	50.40	2,000	1.79	75.59	52,496	1.50	2.69			
2005	29,992	9,773	26.77	1,037	54.24	2,100	2.03	81.37	56,504	1.50	3.04			
2006	29,897	9,742	26.69	1,015	50.87	1,935	1.91	76.30	52,989	1.50	2.86			
2007	30,718	10,009	27.42	1,026	47.13	1,763	1.72	70.69	49,092	1.50	2.58			
2008	30,970	10,092	27.65	1,028	47.13	1,753	1.70	70.70	49,098	1.50	2.56			
2009	29,427	9,589	26.27	973	44.74	1,658	1.70	67.11	46,605	1.50	2.55			
2010	26,572	8,658	23.72	873	43.94	1,616	1.85	65.91	45,768	1.50	2.78			
5 year Average (2006-2010)			26.35	983	46.76	1,745	1.78	70.14	48,710	1.50	2.67			
10 year Average (2001-2010)			26.43	1,032	48.51	1,897	1.84	72.77	50,531	1.50	2.76			

California Water Service Company - Chico-Hamilton District

Water Supply and Demand Analysis and Projections

US Census 2000 Tract Map Summary



Division	Census Tract Blocks	Population	Housing Units	POP/HOU
Chico	1,040	83,005	34,460	2.41
Hamilton	35	2,066	589	3.51
Total	1,075	85,071	35,049	2.43

Chico-Hamilton City District Population Estimate



California Water Service Company - Chico District
Water Supply and Demand Analysis and Projections

Population as of the 2000 Average Annual Services
 Estimated District Population based on 2000 U.S. Census Data & Annual Service Count

District Communities Served: Chico, Hamilton City

Year	Metered Single Family Residential Services (DU)	Multi Family Residential			Flat Rate Residential Services (DU)	Total Residential Services (DU)	Estimated District Population
		Services	Residential Units (DU)	Unit Density			
1995	5,275	419	8,098	19.3	11,729	25,102	78,230
1996	5,661	417	8,103	19.4	11,633	25,397	79,150
1997	6,033	417	8,114	19.5	11,567	25,714	80,130
1998	6,448	420	8,222	19.6	11,508	26,178	81,580
1999	6,984	419	8,180	19.5	11,468	26,632	83,000
2000	7,603	419	8,264	19.7	11,431	27,298	85,070
2001	8,046	422	8,396	19.9	11,408	27,850	86,790
2002	8,586	428	8,759	20.5	11,431	28,776	89,680
2003	9,167	428	8,797	20.6	11,330	29,294	91,290
2004	9,978	426	8,835	20.7	11,234	30,047	93,640
2005	10,579	426	8,872	20.8	11,182	30,633	95,460
2006	11,104	424	8,910	21.0	11,078	31,092	96,890
2007	11,681	423	8,699	20.6	10,887	31,267	97,440
2008	11,976	592	8,813	14.9	10,757	31,545	98,310
2009	12,714	766	9,270	12.1	9,987	31,971	99,630
2010	14,607	777	9,986	12.9	8,405	32,998	102,840
2015	22,107	832	11,114	13.4	2,525	35,746	111,400
2020	26,366	891	12,352	13.9	0	38,718	120,660
2025	28,223	955	13,710	14.4	0	41,933	130,680
2030	30,209	1,023	15,199	14.9	0	45,408	141,510
2035	32,336	1,096	16,830	15.4	0	49,166	153,220
2040	34,613	1,174	18,616	15.9	0	53,229	165,880

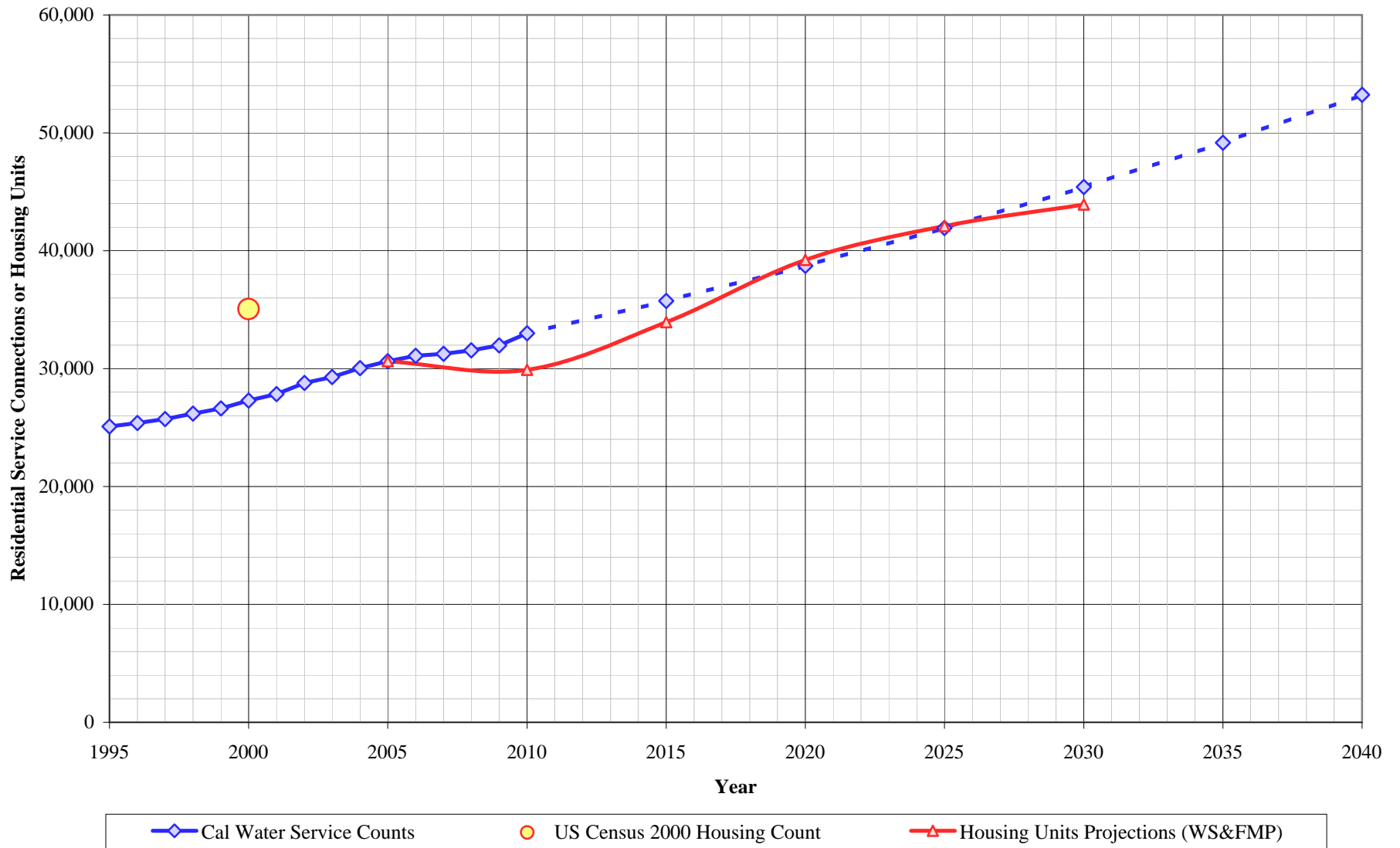
Note: Projected MF unit density adjusted to reflect reclassification of MF services and assumes increasing density over time.

US Census 2000		Calculated Persons per CWS DU	Calculated Persons per US Census Housing Unit
Population	Housing Units		

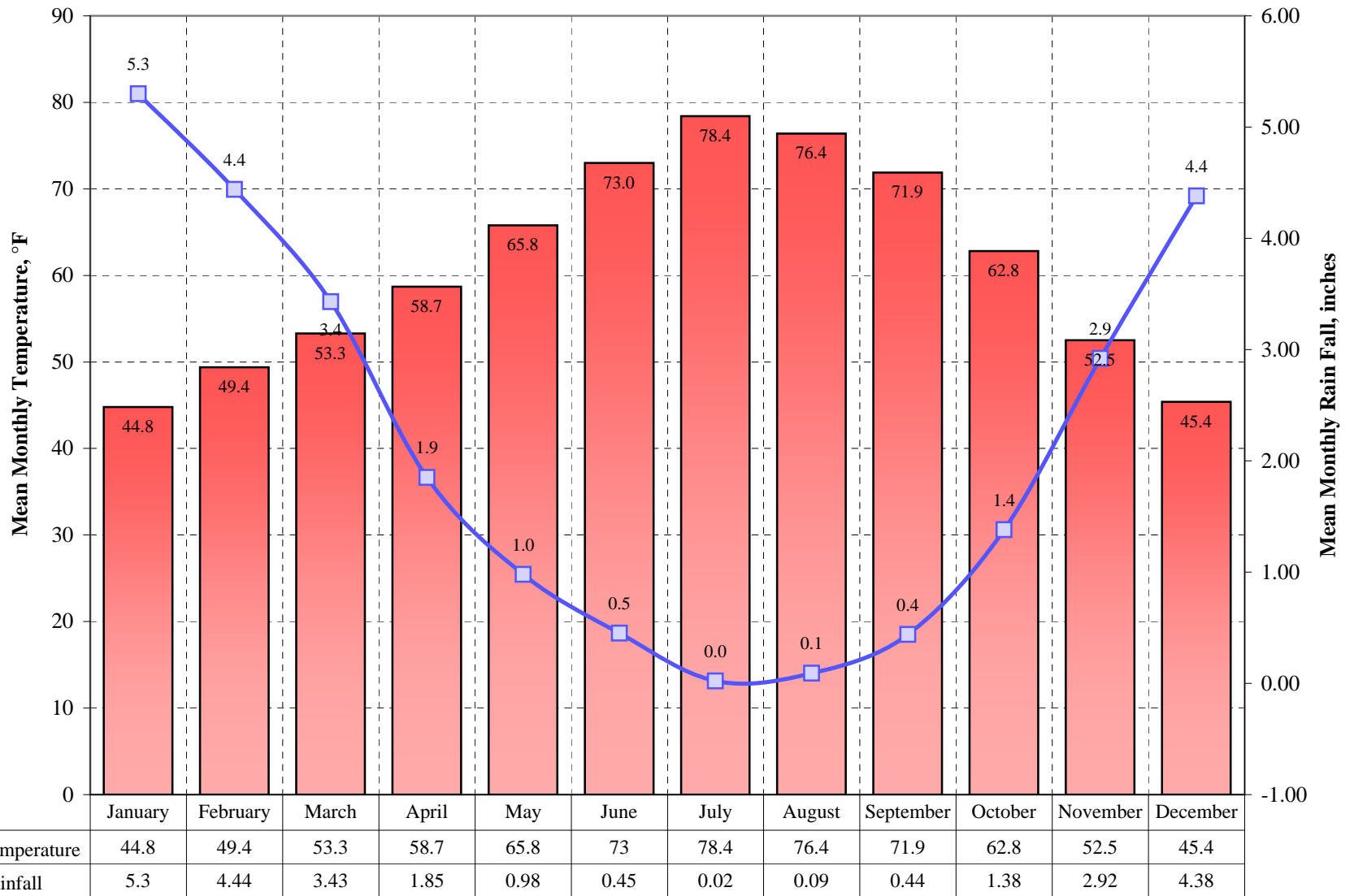
85,071	35,049	3.116	2.427
--------	--------	-------	-------

Projected

Chico-Hamilton City District Housing Estimate



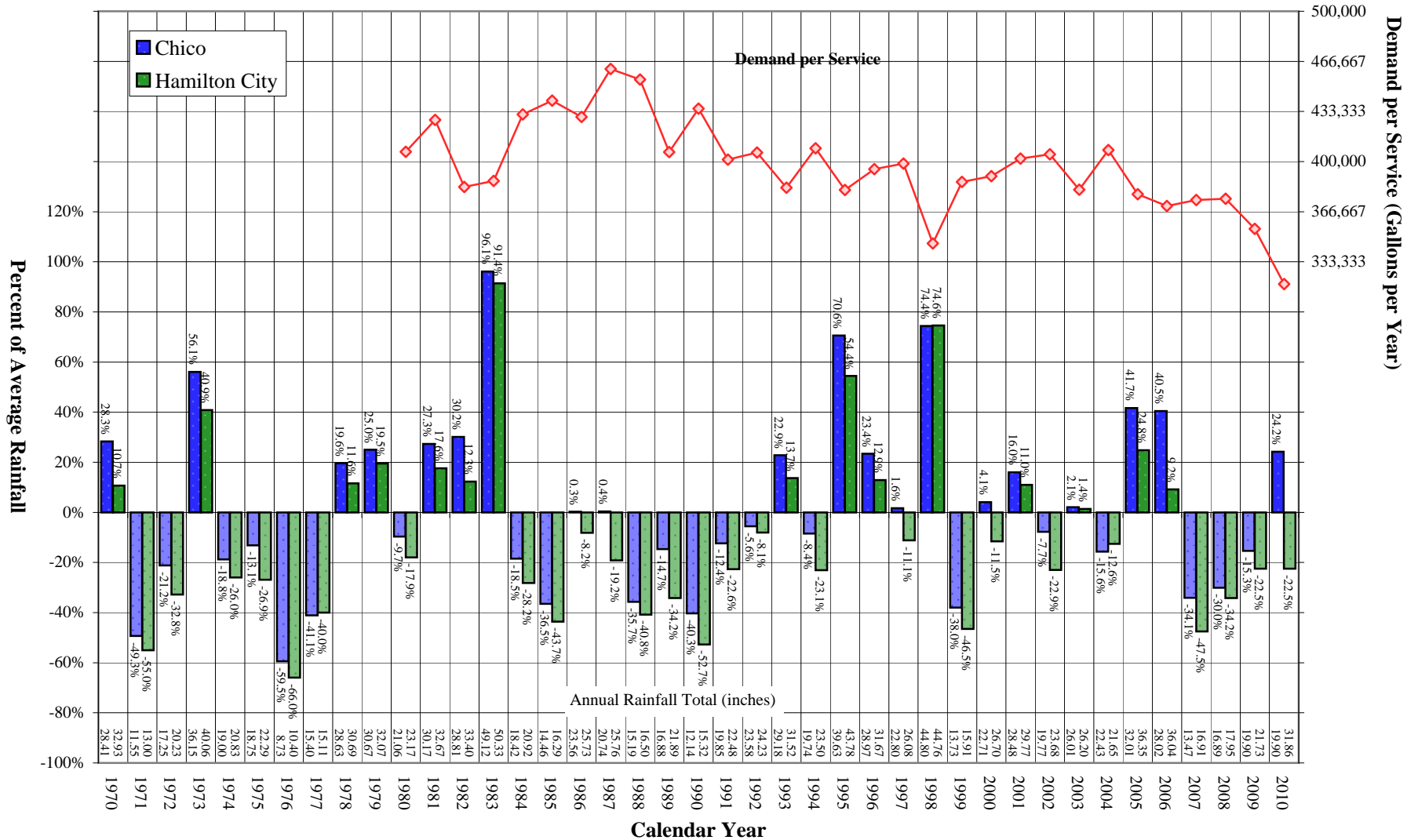
Chico-Hamilton City District Average Monthly Temperature and Rainfall



Chico-Hamilton City District Comparison of Annual Rainfall to Historical Average

Average Annual Rainfall = 26.12 inches (Chico)

Average Annual Rainfall = 22.05 inches (Hamilton City)



California Water Service Company - Chico-Hamilton City District

Water Supply and Demand Analysis and Projections

Worksheet 20

Temperature & Rainfall History (Fahrenheit, Inches)

Year	Annual Average Temp.	Annual Average Rainfall	Rainfall Percent Variation	Demand per Service (Gal / Yr)	Percent of Average Demand	Year	Annual Average Temp.	Annual Average Rainfall	Rainfall Percent Variation	Demand per Service (Gal / Yr)	Percent of Average Demand
1970	61.8	32.93	28.3%			1995	61.1	43.78	70.6%	381,114	95.8%
1971	60.3	13.00	-49.3%			1996	61.5	31.67	23.4%	394,989	99.3%
1972	60.8	20.23	-21.2%			1997	61.7	26.08	1.6%	398,645	100.2%
1973	63.6	40.06	56.1%			1998	59.7	44.76	74.4%	345,560	86.9%
1974	64.7	20.83	-18.8%			1999	59.7	15.91	-38.0%	386,433	97.2%
1975	58.7	22.29	-13.1%			2000	60.5	26.70	4.1%	390,339	98.2%
1976	60.0	10.40	-59.5%			2001	62.0	29.77	16.0%	402,066	101.1%
1977	60.5	15.11	-41.1%			2002	60.8	23.68	-7.7%	404,796	101.8%
1978	61.5	30.69	19.6%			2003	61.2	26.20	2.1%	381,255	95.9%
1979	62.8	32.07	25.0%			2004	60.9	21.65	-15.6%	407,751	102.5%
1980	55.6	23.17	-9.7%	406,549	102.2%	2005	60.5	36.35	41.7%	378,336	95.1%
1981	63.7	32.67	27.3%	427,668	107.5%	2006	60.2	36.04	40.5%	370,519	93.2%
1982	58.7	33.40	30.2%	383,197	96.4%	2007	60.1	16.91	-34.1%	374,537	94.2%
1983	60.3	50.33	96.1%	387,122	97.3%	2008	60.1	17.95	-30.0%	375,286	94.4%
1984	60.7	20.92	-18.5%	431,430	108.5%	2009	60.1	21.73	-15.3%	355,307	89.3%
1985	58.2	16.29	-36.5%	440,564	110.8%	2010	59.8	31.86	24.2%	318,477	80.1%
1986	60.5	25.73	0.3%	429,708	108.1%	2011					
1987	60.4	25.76	0.4%	461,519	116.1%	2012					
1988	60.8	16.50	-35.7%	454,508	114.3%	2013					
1989	60.1	21.89	-14.7%	406,286	102.2%	2014					
1990	60.6	15.32	-40.3%	435,309	109.5%	2015					
1991	60.5	22.48	-12.4%	401,313	100.9%	2016					
1992	61.8	24.23	-5.6%	405,933	102.1%	2017					
1993	60.0	31.52	22.9%	382,574	96.2%	2018					
1994	59.7	23.50	-8.4%	408,819	102.8%	2019					

Sources: Western Regional Climate Center:

<http://www.wrcc.dri.edu/cgi-bin/cliMAIN.pl?ca1715>

Calendar Year	Average Water Year	Normal Water Year	Single-Dry Water Year	Multiple-Dry Water Years			
				1	2	3	4
	-	2003	1,999	1988	1989	1990	1991
Demand per Service (gal/yr)	397,674	381,255	386,433	454,508	406,286	435,309	401,313
Difference from Normal	100.0%	100%	101%	119%	107%	114%	105%

California Water Service Company - Chico-Hamilton City District

Water Supply and Demand Analysis and Projections

Worksheet 20a

Temperature & Rainfall History - Hamilton City
(Fahrenheit, Inches)

Year	Annual Average Temp.	Annual Average Rainfall	Rainfall Percent Variation	Demand per Service (Gal / Yr)	Percent of Average Demand	Year	Annual Average Temp.	Annual Average Rainfall	Rainfall Percent Variation	Demand per Service (Gal / Yr)	Percent of Average Demand
1970	62.3	28.41	10.7%			1995	61.9	39.63	54.4%	381,114	95.8%
1971	60.7	11.55	-55.0%			1996	63.5	28.97	12.9%	394,989	99.3%
1972	61.2	17.25	-32.8%			1997	63.3	22.80	-11.1%	398,645	100.2%
1973	61.6	36.15	40.9%			1998	60.8	44.80	74.6%	345,560	86.9%
1974	61.4	19.00	-26.0%			1999	61.7	13.73	-46.5%	386,433	97.2%
1975	59.9	18.75	-26.9%			2000	62.2	22.71	-11.5%	390,339	98.2%
1976	61.5	8.73	-66.0%			2001	62.8	28.48	11.0%	402,066	101.1%
1977	62.4	15.40	-40.0%			2002	62.5	19.77	-22.9%	404,796	101.8%
1978	62.3	28.63	11.6%			2003	63.1	26.01	1.4%	381,255	95.9%
1979	61.5	30.67	19.5%			2004	62.8	22.43	-12.6%	407,751	102.5%
1980	61.3	21.06	-17.9%	406,549	102.2%	2005	62.7	32.01	24.8%	378,336	95.1%
1981	62.6	30.17	17.6%	427,668	107.5%	2006	62.5	28.02	9.2%	370,519	93.2%
1982	59.7	28.81	12.3%	383,197	96.4%	2007	62.7	13.47	-47.5%	374,537	94.2%
1983	60.3	49.12	91.4%	387,122	97.3%	2008	63.1	16.89	-34.2%	375,286	94.4%
1984	62.7	18.42	-28.2%	431,430	108.5%	2009	64.6	19.90	-22.5%	355,307	89.3%
1985	60.7	14.46	-43.7%	440,564	110.8%	2010	64.6	19.90	-22.5%	318,477	80.1%
1986	62.1	23.56	-8.2%	429,708	108.1%	2011					
1987	62.3	20.74	-19.2%	461,519	116.1%	2012					
1988	62.5	15.19	-40.8%	454,508	114.3%	2013					
1989	61.3	16.88	-34.2%	406,286	102.2%	2014					
1990	61.9	12.14	-52.7%	435,309	109.5%	2015					
1991	62.5	19.85	-22.6%	401,313	100.9%	2016					
1992	63.7	23.58	-8.1%	405,933	102.1%	2017					
1993	62.0	29.18	13.7%	382,574	96.2%	2018					
1994	61.8	19.74	-23.1%	408,819	102.8%	2019					

Note: Based on weighted average with 9.5 miles from Orland to Hamilton City and 14.9 miles from Hamilton City to Chico Farms

CHICO EXPERIMENT STN, CALIFORNIA (041715)

ORLAND, CALIFORNIA (046506)

Source: Western Regional Climate Center:

Source: Western Regional Climate Center:

<http://www.wrcc.dri.edu/cgi-bin/cliMAIN.pl?ca1715>

<http://www.wrcc.dri.edu/cgi-bin/cliMAIN.pl?ca6506>

California Water Service Company - Chico-Hamilton City District
Water Supply and Demand Analysis and Projections

Worksheet 20

Temperature Data

Station:(041715) CHICO EXPERIMENT STN															
From Year=1906 To Year=2010															
	Monthly Averages			Daily Extremes				Monthly Extremes				Max. Temp.		Min. Temp.	
	Max.	Min.	Mean	High	Date	Low	Date	Highest Mean	Year	Lowest Mean	Year	>= 90 F	<= 32 F	<= 32 F	<= 0 F
	F	F	F	F	dd/yyyy or yyyymmdd	F	dd/yyyy or yyyymmdd	F	-	F	-	# Days	# Days	# Days	# Days
January	53.9	35.6	44.8	77	14/1920	12	8/1937	50.5	1953	36	1937	0	0	12	0
February	60.2	38.6	49.4	82	18/1920	16	7/1989	56.4	1963	44.4	1956	0	0	6.3	0
March	65.6	40.9	53.3	93	17/1914	23	1/1971	60.3	1926	48.6	1948	0.1	0	3.4	0
April	72.8	44.6	58.7	98	25/1926	27	17/1922	64.3	1939	49.4	1967	0.6	0	0.8	0
May	81.2	50.5	65.8	108	30/1910	30	16/1984	72.7	1992	59.1	1977	6.5	0	0	0
June	89.7	56.4	73	115	15/1961	38	8/1986	79.2	1918	67.3	1952	15.4	0	0	0
July	96.4	60.3	78.4	117	15/1972	40	12/1981	84	1931	73.1	1987	26.5	0	0	0
August	94.8	58	76.4	116	1/1914	38	24/1978	82.2	1967	70.8	1976	24.6	0	0	0
September	89.5	54.2	71.9	114	4/1988	35	27/1986	76.7	1932	66.2	1986	16	0	0	0
October	78.6	47.1	62.8	107	3/2001	23	29/1971	68	1917	58.4	1920	3.8	0	0.4	0
November	64.9	40.1	52.5	91	18/1936	20	12/1916	57.7	1995	45.8	1994	0	0	4.5	0
December	54.9	35.9	45.4	78	1/2008	11	11/1932	52.2	1958	40.1	1924	0	0	11.1	0
Annual	75.2	46.8	61	117	19720715	11	19321211	63.4	1931	58.7	1975	93.5	0.1	38.6	0

	Jan	Feb	Mar	Apr	May	Jun	Jul	Aug	Sep	Oct	Nov	Dec	Total
Monthly Average ETo Report	1.24	1.96	3.41	5.10	6.82	7.80	8.06	7.13	5.40	3.72	1.80	0.93	53.37

1) California Irrigation Management Information System (CIMIS), <http://www.cimis.water.ca.gov/cimis/welcome.jsp>, EvapoTranspiration (Eto) Zones Map, Zone 12

California Water Service Company - Chico-Hamilton City District
Water Supply and Demand Analysis and Projections

Worksheet 20a

Temperature Data

Station:(046506) ORLAND															
From Year=1903 To Year=2009															
	Monthly Averages			Daily Extremes				Monthly Extremes				Max. Temp.		Min. Temp.	
	Max.	Min.	Mean	High	Date	Low	Date	Highest Mean	Year	Lowest Mean	Year	>= 90 F	<= 32 F	<= 32 F	<= 0 F
					dd/yyyy or yyyymmdd		dd/yyyy or yyyymmdd		-	F	-	# Days	# Days	# Days	# Days
January	54.1	36.6	45.4	78	9/1962	17	9/1937	51.2	2003	35.9	1937	0	0	9	0
February	59.9	39.7	49.8	82	15/1977	19	2/1949	55.4	1963	44.1	1966	0	0	3.6	0
March	65.5	42.5	54	89	17/1914	24	1/1939	61.7	2004	48.7	2006	0	0	1.3	0
April	72.9	46.3	59.6	98	25/1926	27	8/2001	66.4	1939	49.1	1967	1	0	0.3	0
May	81.9	52.9	67.4	110	30/1910	32	3/1950	74.4	1992	58.7	1998	7.3	0	0	0
June	90.3	59.2	74.8	115	25/1925	31	2/1982	81.7	1918	68.3	1980	16	0	0	0
July	96.9	62.5	79.7	120	8/1905	45	27/1905	86.4	1931	73.3	1987	26.5	0	0	0
August	95.2	60.1	77.7	120	7/1908	43	3/1905	83	1913	72.2	1976	24.8	0	0	0
September	89.5	56.7	73.1	114	4/1988	39	30/1971	79.2	1932	67.2	1965	15.9	0	0	0
October	78.8	49.9	64.3	105	3/1933	29	29/1946	71.4	1917	58.8	1920	3.9	0	0	0
November	64.7	42	53.4	95	7/1908	21	18/1985	58.8	1995	47.4	1985	0.1	0	1.8	0
December	54.7	36.9	45.8	81	16/1980	15	23/1990	51.5	1958	38.5	1965	0	0	7.9	0
Annual	75.4	48.8	62.1	120	7/8/05	15	12/23/90	64.6	1934	59.5	1965	95.5	0.1	23.9	0

	Jan	Feb	Mar	Apr	May	Jun	Jul	Aug	Sep	Oct	Nov	Dec	Total
Monthly Average ETo Report	1.24	1.96	3.41	5.10	6.82	7.80	8.06	7.13	5.40	3.72	1.80	0.93	53.37

1) California Irrigation Management Information System (CIMIS), <http://www.cimis.water.ca.gov/cimis/welcome.jsp>, EvapoTranspiration (Eto) Zones Map, Zone 12

California Water Service Company - Chico-Hamilton City District
Water Supply and Demand Analysis and Projections

Worksheet 20

Precipitaion Data

Station:(041715) CHICO EXPERIMENT STN														
From Year=1906 To Year=2010														
	Precipitation											Total Snowfall		
	Mean	High	Year	Low	Year	1 Day Max.		>=	>=	>=	>=	Mean	High	Year
	in.	in.	-	in.	-	in.	dd/yyyy or yyyymmdd	# Days	# Days	# Days	# Days	in.	in.	-
January	5.3	16.97	1995	0.36	1991	5.73	3/1916	11	8	4	2	0	2	1972
February	4.44	14.96	1998	0.08	1971	4.35	3/1998	10	7	3	1	0	0	1949
March	3.43	11.67	1995	0	1923	3.61	9/1995	9	6	3	1	0	0.3	1976
April	1.85	7.13	1948	0	1909	3.52	5/1926	6	4	1	0	0	0	1949
May	0.98	4.11	1915	0	1920	1.87	25/1917	4	2	1	0	0	0	1949
June	0.45	2.17	1993	0	1911	1.38	6/1993	2	1	0	0	0	0	1949
July	0.02	1.02	1974	0	1906	0.94	8/1974	0	0	0	0	0	0	1948
August	0.09	1.48	1976	0	1906	0.92	11/1965	1	0	0	0	0	0	1948
September	0.44	5.9	1912	0	1907	5.6	6/1912	1	1	0	0	0	0	1948
October	1.38	9.86	1962	0	1913	4.46	12/1962	4	3	1	0	0	0	1948
November	2.92	10.68	1920	0	1929	3.82	18/1920	7	5	2	1	0	0	1948
December	4.38	12.92	1940	0.07	1956	4.52	16/2002	9	6	3	1	0.1	2.3	1972
Annual	25.66	45.54	1941	10.4	1976	5.73	19160103	63	43	18	7	0.1	4.3	1972

California Water Service Company - Chico-Hamilton City District
Water Supply and Demand Analysis and Projections

Worksheet 20a

Precipitation Data

Station:(046506) ORLAND														
From Year=1903 To Year=2009														
	Precipitation										Total Snowfall			
	Mean	High	Year	Low	Year	1 Day Max.	>=	>=	>=	>=	Mean	High	Year	
							dd/yyyy							
							or							
	in.	in.	-	in.	-	in.	yyyyymmdd	# Days	# Days	# Days	# Days	in.	in.	-
January	3.99	17.37	1995	0.04	2007	3.19	26/2008	11	7	3	1	0.7	12	1937
February	3.43	18.04	1998	0.01	1964	4.36	3/1998	9	6	3	1	0	0	1910
March	2.68	11.62	1949	0	1926	3.76	9/1995	8	5	2	1	0.1	4	1976
April	1.28	5.4	2006	0	1909	1.9	3/1936	6	3	1	0	0	0	1910
May	0.73	4.65	1998	0	1904	1.45	27/1977	4	2	0	0	0	0	1911
June	0.37	1.84	1993	0	1903	1.75	5/1993	2	1	0	0	0	0	1910
July	0.04	1.32	1974	0	1903	0.74	8/1974	0	0	0	0	0	0	1911
August	0.11	1.89	1968	0	1903	1.76	21/1968	0	0	0	0	0	0	1912
September	0.37	3.82	1912	0	1905	3.05	5/1912	1	1	0	0	0	0	1911
October	1.03	5.22	1957	0	1905	2.11	12/1962	4	2	1	0	0	0	1925
November	2.34	8.37	1983	0	1907	2.76	9/1954	7	4	2	1	0	0	1911
December	3.51	11.95	1952	0	1956	3.1	29/1933	10	6	2	1	0.2	4	1931
Annual	19.89	48.35	1983	7.66	1976	4.36	2/3/98	61	38	13	5	1	6	1950

PAGE LEFT BLANK INTENTIONALLY

**California Water Service Company - Chico-Hamilton City District
Water Supply and Demand Analysis and Projections**

Groundwater Facilities

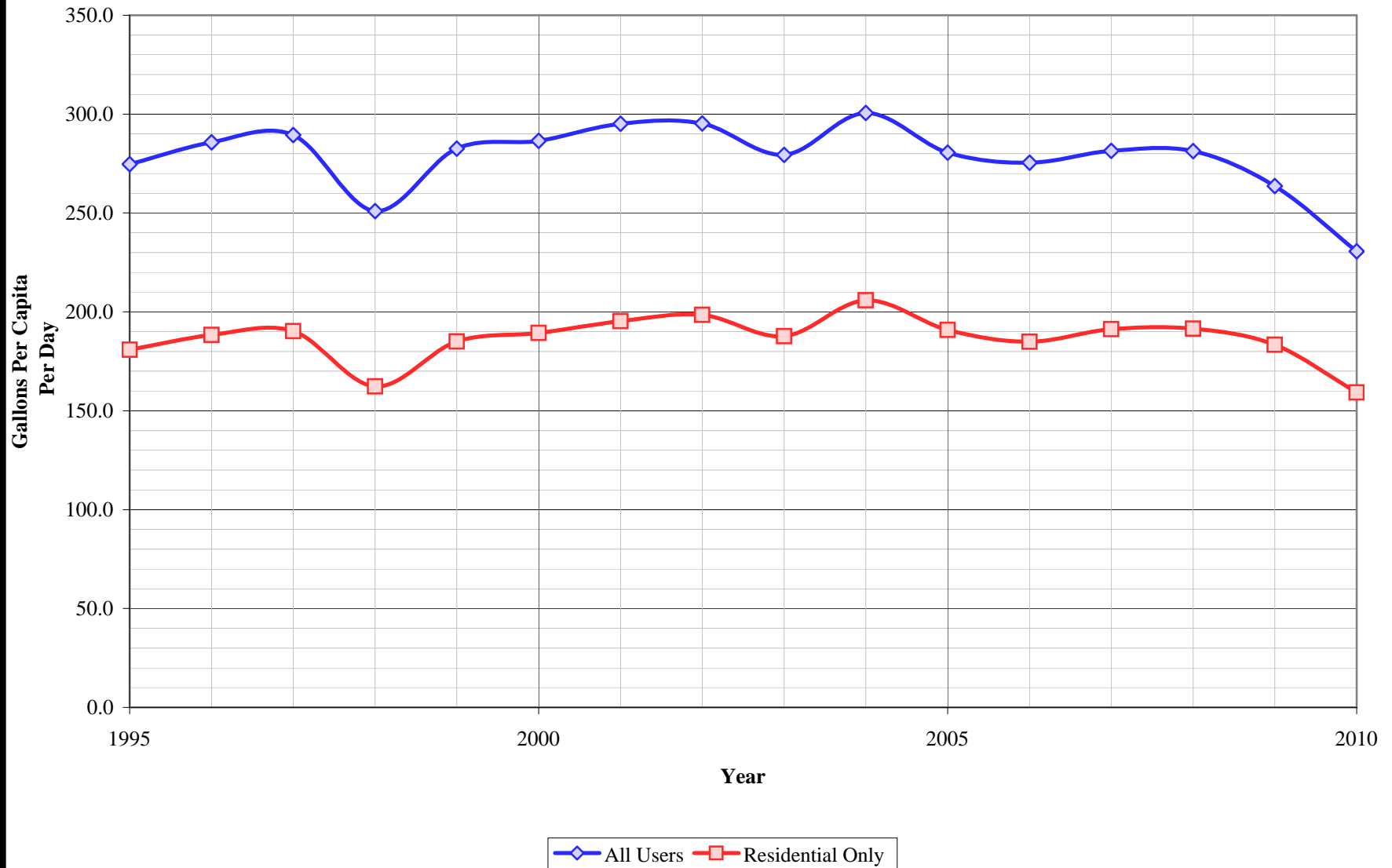
Division	Unit No.	Design Capacity		Status
		Active	Inactive	
Chico	01-04	500		Standby
	03-03	400		
	04-02		100	Inactive
	05-02	1,200		
	07-04	950		
	08-01	900		
	09-02		900	Standby
	11-01	600		
	12-01	700		
	13-01		800	Inactive
	14-01	800		
	15-01		950	Inactive
	16-01	900		
	17-01	900		
	18-01	900		
	19-01	900		
	20-01	900		
	21-01	850		
	22-01	800		
	23-01	1,300		
	24-01	750		
	25-01	1,000		
	26-01	850		
	27-01	1,000		
	28-01	900		
	29-01	1,000		
	30-01	1,000		
	31-01	1,100		
	32-01	1,100		
	33-01	600		
	34-01	1,200		
	35-01	1,000		
	37-01	900		
	38-01	1,100		
	39-01	750		
	40-01	825		
	41-01	1,100		
	42-01	850		
	44-01	800		

Division	Unit No.	Design Capacity		Status
		Active	Inactive	
Chico	46-01	500		
	47-01	700		
	48-01	1,000		
	49-01	900		
	50-01	850		
	51-01	1,000		
	52-01		1,100	Standby
	53-01	1,100		
	54-01	1,100		
	55-01		1,100	Inactive
	56-01	900		
	57-01	1,000		
	58-01		1,000	Inactive
	59-01	1,100		
	61-01	1,100		
	62-01	1,000		
	63-01	1,050		
	64-01	850		
	65-01	1,150		
	67-01	1,200		
	68-01		1,200	Inactive
	69-01	1,000		
	70-01	950		
	71-01	1,500		
72-01	1,000			
75-01	1,800			
76-01	1,300			
Hamilton City	1-01	600		
	2-01	850		
	2-02	550		

Total units:	69	61	8
Design Capacity (GPM)	64,525	57,375	7,150
Design Capacity (MGD)	92.9	82.6	10.3
Design Capacity (AFY)	104,079	92,546	11,533

Notes:
 1) Listed pump capacities on this worksheet represent design flowrates, actual flowrates are highly dependent on local system pressures, well characteristics, and other design criteria
 2) Values in bold are estimated
 Updated 1/1/2011

Chico-Hamilton District Per Capita Consumption



California Water Service Company - Chico-Hamilton City District
Water Supply and Demand Analysis and Projections

Worksheet 22

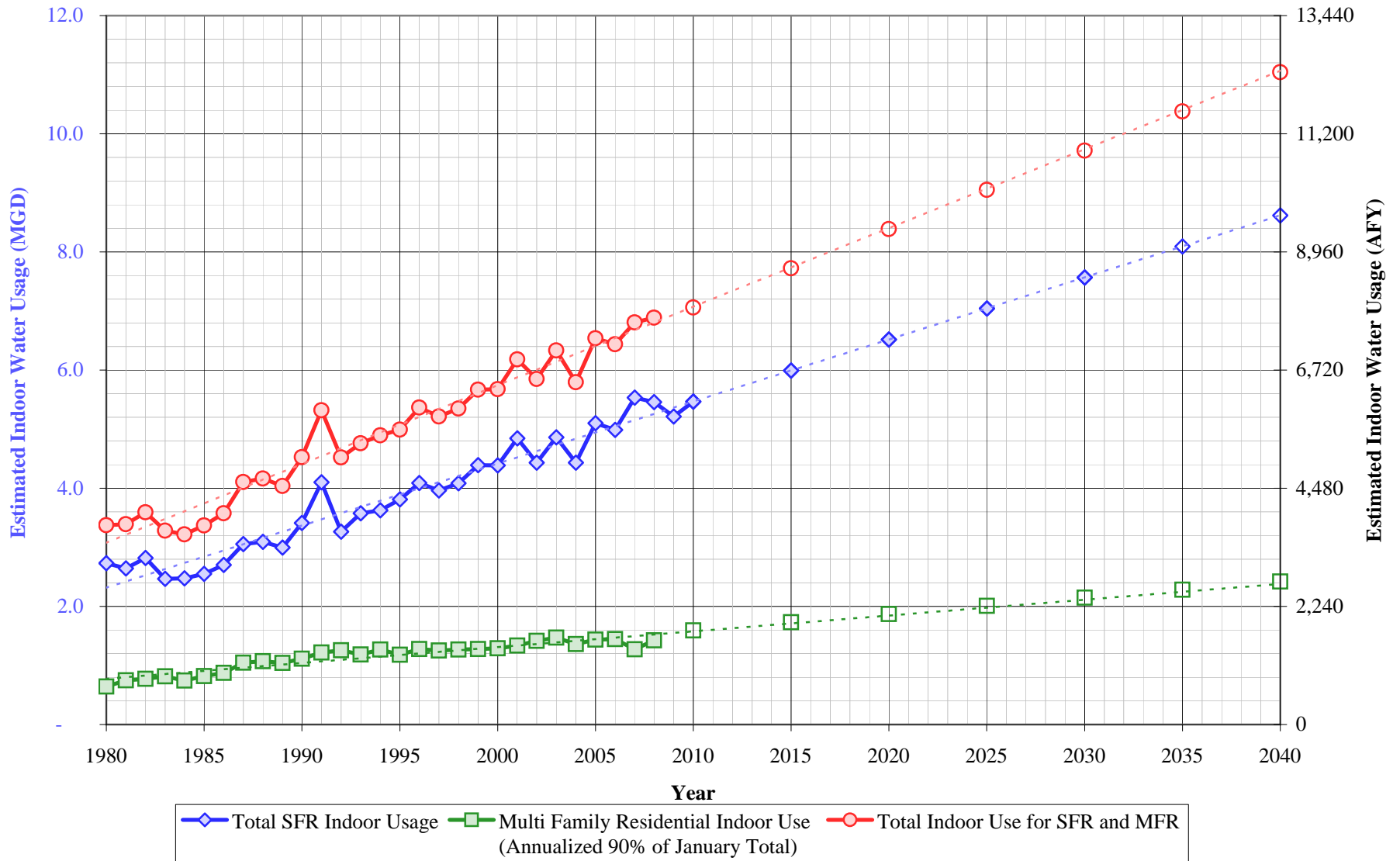
Per Capita Water Demand

Year	All Users			Residential Only		
	Usage (AFY)	Usage (MGY)	Gallons Per Capita Per Day	Usage (AFY)	Usage (MGY)	Gallons Per Capita Per Day
1995	24,076	7,845	274.8	15,847	5,164	180.8
1996	25,338	8,256	285.8	16,697	5,441	188.3
1997	25,980	8,466	289.4	17,076	5,564	190.2
1998	22,932	7,472	250.9	14,836	4,834	162.4
1999	26,269	8,560	282.6	17,201	5,605	185.0
2000	27,301	8,896	286.5	18,047	5,881	189.4
2001	28,689	9,348	295.1	18,991	6,188	195.3
2002	29,660	9,665	295.3	19,943	6,498	198.5
2003	28,573	9,311	279.4	19,198	6,256	187.7
2004	31,529	10,274	300.6	21,589	7,035	205.8
2005	29,992	9,773	280.5	20,406	6,649	190.8
2006	29,897	9,742	275.5	20,072	6,541	184.9
2007	30,718	10,009	281.4	20,876	6,802	191.3
2008	30,970	10,092	281.2	21,089	6,872	191.5
2009	29,427	9,589	263.7	20,472	6,671	183.4
2010	26,572	8,658	230.7	18,344	5,977	159.2
5 Yr. Avg.	29,517	9,618	266	20,171	6,573	182
10 Yr. Avg.	29,603	9,646	278	20,098	6,549	189

Five year average is from years 2006 through 2010

Ten year average is from years 2001 through 2010

Chico-Hamilton District Estimated Indoor Water Usage



California Water Service Company - Chico-Hamilton City District
Water Supply and Demand Analysis and Projections

Estimated Indoor/Outdoor Water Usage - Single Family Residential (SFR)

Year	Metered Single Family Residential Indoor Use (Annualized 90% of January Total)			Indoor Flat Rate Usage (AFY)	Total SFR Indoor Usage				Multi Family Residential January Usage (CCF)	Multi Family Residential Indoor Use (Annualized 90% of January Total)				
	JAN (CCF)	AFY	AFY/Service		AFY	MGD	GPD/Service	%		AFY	MGD	GPD/Service	GPD/Unit	%
1980	12,533	311	0.28	2,750	3,061	2.73	247	29%	28,984	719	0.64	3,129	139	56%
1981	13,526	335	0.26	2,625	2,960	2.64	234	27%	33,809	838	0.75	3,268	150	58%
1982	15,594	387	0.27	2,774	3,160	2.82	245	32%	34,912	866	0.77	3,261	152	62%
1983	15,347	381	0.24	2,382	2,762	2.47	212	27%	36,766	912	0.81	3,255	159	65%
1984	17,398	431	0.23	2,339	2,770	2.47	208	24%	33,606	833	0.74	2,705	134	54%
1985	19,160	475	0.23	2,383	2,858	2.55	210	24%	37,039	918	0.82	2,688	133	52%
1986	20,962	520	0.24	2,505	3,025	2.70	217	25%	39,570	981	0.88	2,687	136	52%
1987	24,496	607	0.27	2,816	3,423	3.06	239	25%	47,349	1,174	1.05	3,157	158	57%
1988	25,805	640	0.26	2,825	3,465	3.09	232	26%	48,348	1,199	1.07	3,120	155	56%
1989	26,586	659	0.24	2,695	3,354	2.99	213	27%	47,167	1,169	1.04	3,009	148	58%
1990	32,104	796	0.26	3,026	3,822	3.41	232	27%	50,311	1,247	1.11	3,085	149	56%
1991	40,937	1,015	0.30	3,577	4,592	4.10	268	35%	55,020	1,364	1.22	2,992	142	60%
1992	35,595	883	0.23	2,776	3,658	3.27	207	27%	56,694	1,406	1.25	2,995	156	58%
1993	43,002	1,066	0.25	2,939	4,005	3.58	221	31%	53,564	1,328	1.19	2,816	147	55%
1994	47,842	1,186	0.24	2,874	4,061	3.63	217	28%	57,290	1,420	1.27	3,012	157	58%
1995	53,408	1,324	0.25	2,944	4,268	3.81	224	32%	53,377	1,323	1.18	2,820	146	56%
1996	60,445	1,499	0.26	3,080	4,578	4.09	236	32%	57,756	1,432	1.28	3,066	158	64%
1997	61,348	1,521	0.25	2,916	4,437	3.96	225	30%	56,647	1,404	1.25	3,007	155	56%
1998	66,229	1,642	0.25	2,931	4,573	4.08	227	36%	57,303	1,421	1.27	3,020	154	63%
1999	75,104	1,862	0.27	3,058	4,920	4.39	238	33%	57,634	1,429	1.28	3,045	156	59%
2000	79,137	1,962	0.26	2,950	4,912	4.39	230	31%	58,260	1,444	1.29	3,078	156	59%
2001	90,495	2,244	0.28	3,181	5,425	4.84	249	33%	60,354	1,496	1.34	3,166	159	58%
2002	85,886	2,129	0.25	2,835	4,964	4.43	221	29%	63,988	1,586	1.42	3,309	162	57%
2003	98,258	2,436	0.27	3,011	5,447	4.86	237	33%	66,359	1,645	1.47	3,432	167	63%
2004	94,206	2,336	0.23	2,630	4,965	4.43	209	26%	61,550	1,526	1.36	3,198	154	55%
2005	111,998	2,777	0.26	2,935	5,712	5.10	234	32%	64,953	1,610	1.44	3,375	162	62%
2006	112,836	2,798	0.25	2,791	5,589	4.99	225	31%	65,320	1,620	1.45	3,410	162	61%
2007	129,362	3,207	0.27	2,989	6,197	5.53	245	36%	57,586	1,428	1.27	3,013	147	53%
2008	129,911	3,221	0.27	2,893	6,114	5.46	240	35%	64,444	1,598	1.43	2,409	162	53%
2009	131,969	3,272	0.26	2,570	5,842	5.22	230		78,417	1,944	1.74	2,266	187	63%
2010		3,673		2,448	6,121	5.46	229	32%	-	1,786	1.59	3,216	162	59%
2015		5,368		1,342	6,710	5.99	230	32%	-	1,940	1.73	3,259	165	59%
2020		7,299		0	7,299	6.52	230	32%	-	2,095	1.87	3,301	168	60%
2025		7,888		0	7,888	7.04	230	32%	-	2,249	2.01	3,344	171	60%
2030		8,477		0	8,477	7.57	231	32%	-	2,403	2.15	3,387	174	60%
2035		9,066		0	9,066	8.09	231	32%	-	2,558	2.28	3,429	177	61%
2040		9,655		0	9,655	8.62	231	32%	-	2,712	2.42	3,472	180	61%

California Water Service Company - Chico-Hamilton City District

Worksheet 24

Water Supply and Demand Analysis and Projections

Comparison of Projected Demand and Conservation Savings Between SBx7-7 Compliance Targets and Actual Proposed Programs

Year	SBx7-7 Compliance Target (gpcd)	Anticipated GPCD with Proposed Programs*	Estimated Population	Undadjusted Baseline Demand (AFY)	SBx7-7 Compliance Target Demand (AFY)	Anticipated Demand with Proposed Programs (AFY)	Compliance Target Savings Requirement (AFY)	Savings Due to Proposed Programs (AFY)
2005-2009 Average	276	276	97,546	30,201	30,201	30,201	0	0
2010	276	276	102,840	31,840	31,840	31,840	0	0
2011	273	273	104,490	32,351	31,896	31,953	454	398
2012	269	270	106,180	32,874	31,951	32,113	923	761
2013	265	266	107,890	33,403	31,997	32,147	1,406	1,256
2014	261	263	109,630	33,942	32,036	32,297	1,906	1,645
2015	257	257	111,400	34,490	32,069	32,069	2,420	2,420
2016	251	251	113,190	35,044	31,875	31,875	3,169	3,169
2017	246	246	115,020	35,611	31,669	31,669	3,942	3,942
2018	240	240	116,870	36,183	31,445	31,445	4,739	4,739
2019	235	235	118,750	36,765	31,206	31,206	5,560	5,560
2020	229	229	120,660	37,357	30,951	30,951	6,406	6,406
2021	229	229	122,600	37,957	31,448	31,448	6,509	6,509
2022	229	229	124,570	38,567	31,954	31,954	6,614	6,614
2023	229	229	126,580	39,190	32,469	32,469	6,720	6,720
2024	229	229	128,610	39,818	32,990	32,990	6,828	6,828
2025	229	229	130,680	40,459	33,521	33,521	6,938	6,938
2026	229	229	132,780	41,109	34,060	34,060	7,049	7,049
2027	229	229	134,910	41,769	34,606	34,606	7,162	7,162
2028	229	229	137,070	42,437	35,160	35,160	7,277	7,277
2029	229	229	139,270	43,119	35,725	35,725	7,394	7,394
2030	229	229	141,510	43,812	36,299	36,299	7,513	7,513
2031	229	229	143,780	44,515	36,881	36,881	7,633	7,633
2032	229	229	146,080	45,227	37,471	37,471	7,756	7,756
2033	229	229	148,430	45,955	38,074	38,074	7,880	7,880
2034	229	229	150,800	46,688	38,682	38,682	8,006	8,006
2035	229	229	153,220	47,438	39,303	39,303	8,135	8,135
2036	229	229	155,670	48,196	39,931	39,931	8,265	8,265
2037	229	229	158,170	48,970	40,573	40,573	8,397	8,397
2038	229	229	160,700	49,753	41,222	41,222	8,532	8,532
2039	229	229	163,270	50,549	41,881	41,881	8,668	8,668
2040	229	229	165,880	51,357	42,550	42,550	8,807	8,807

*Note: The district is projected to achieve its district-specific 2015 SBx7-7 compliance target through a combination of passive and active savings. For the purpose of this analysis it is assumed that there will be a linear reduction in GPCD from 2015-2020 to achieve the district-specific 2020 SBx7-7 compliance target. GPCD will remain flat from 2020 through 2040.