

Water Resources Planning Department

Water Supply / Demand Analysis and Projections
for
Westlake District

2010

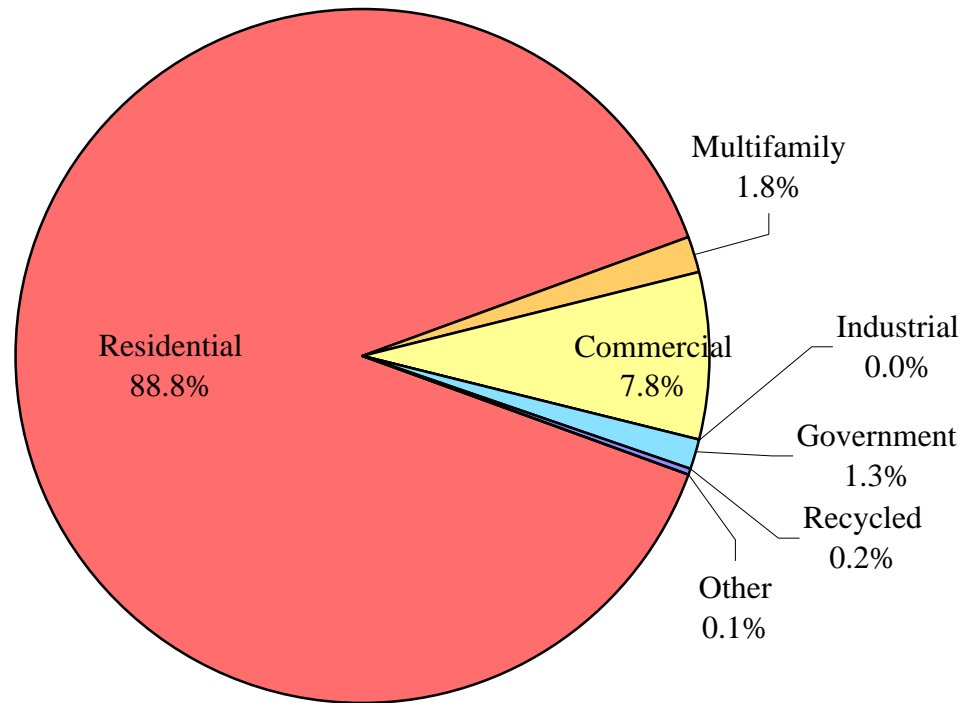


Table of Contents for Worksheets

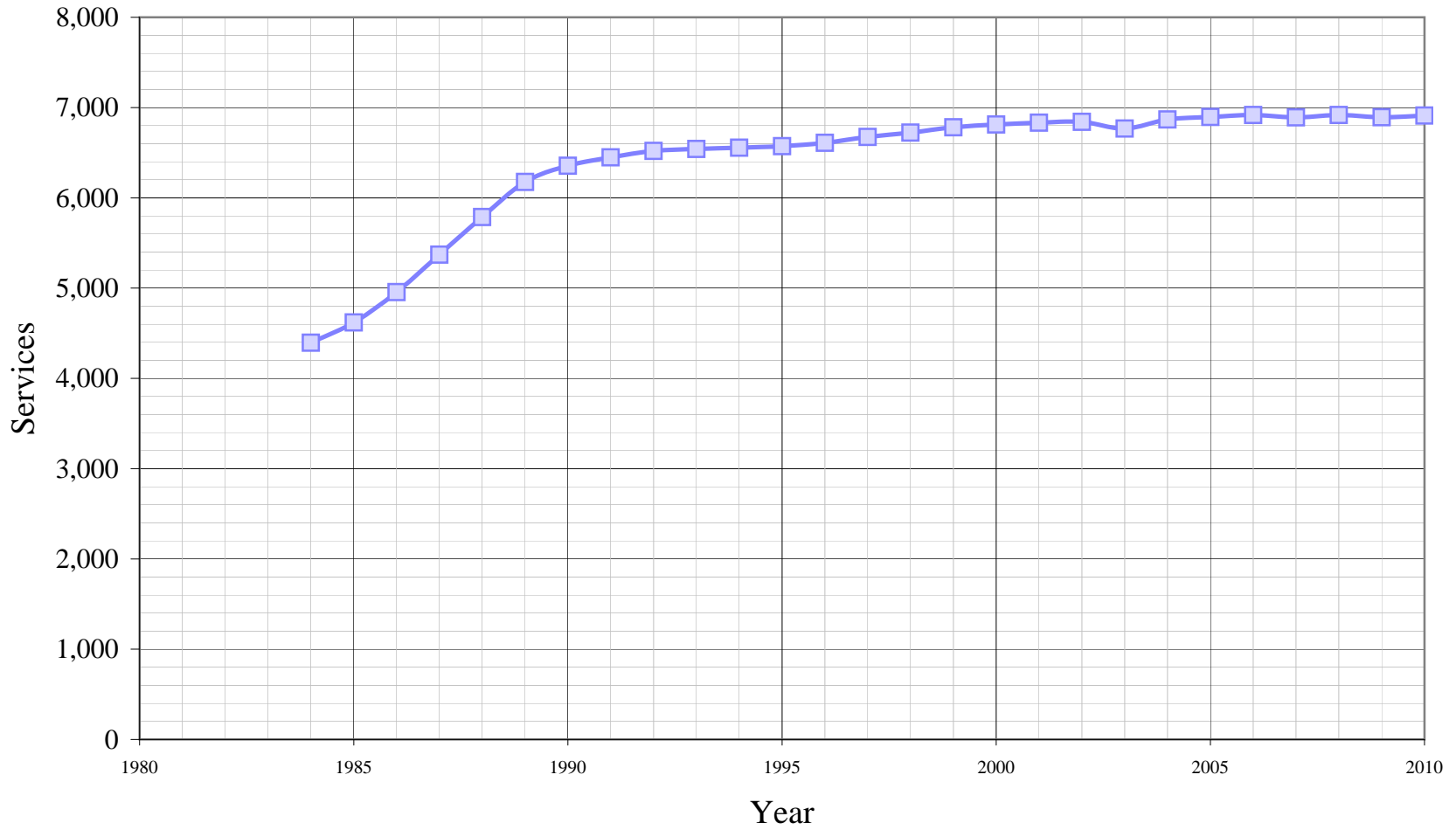
Worksheet	Title
1	Annual Services
2	Service Growth Percentage
3	District Sales (ccf)
4	District Sales (AF)
5	Demand per Service (Gallons/Service/Year)
6	Demand per Service (Gallons per Day)
7	Percentage Change in Annual Demand
8	Percentage of Total Sales
9	Percentage of Total Demand
10	Demand Scenario 1 (Low Demand Projection)
11	Demand Scenario 2 (Average Demand Projection)
12	Demand Scenario 3 (High Demand Projection)
13	Demand Scenario 4 (Alternate Service Projection)
14	not used
15	Actual & Projected Annual Average Services
16	Actual & Projected Demand in Acre-Feet
17	Projected Annual Supply by Source
18	Historical and Projected Average Day, Maximum Day, and Peak Demands
19	Population as of the 2000 Average Annual Services
20	Temperature & Rainfall History
21	Groundwater Facilities (if available)
22	Per Capita Water Demand Calculation
23	Indoor/Outdoor Water Usage
24	SB-7 Compliance Demand Worksheet

Westlake District

Distribution of Services (2010)



Westlake Distict Historical Services



California Water Service Company - Westlake District
Water Supply and Demand Analysis and Projections
Service Growth Percentage

Worksheet 2

Year	Residential	Multi-Residential	Multi-Res. units	Commercial	Industrial	Government	Recycled	Other	Total
1985	4.89%	0.00%	0.00%	12.32%	-6.67%	-1.89%	0%	20.00%	5.12%
1986	7.18%	0.00%	0.00%	11.39%	0.00%	-1.92%	0%	22.22%	7.25%
1987	8.70%	1.89%	0.00%	6.06%	0.00%	0.00%	0%	13.64%	8.40%
1988	8.21%	0.00%	0.00%	1.43%	0.00%	0.00%	0%	24.00%	7.75%
1989	6.63%	-1.85%	0.00%	11.97%	0.00%	1.96%	0%	0.00%	6.72%
1990	2.79%	0.00%	-11.31%	8.49%	0.00%	1.92%	0%	-22.58%	2.91%
1991	1.14%	22.64%	27.80%	0.58%	0.00%	32.08%	0%	-20.83%	1.46%
1992	0.91%	0.00%	0.00%	0.29%	0.00%	30.00%	0%	-31.58%	1.09%
1993	0.40%	0.00%	-0.09%	0.86%	0.00%	0.00%	0%	-30.77%	0.35%
1994	0.25%	0.00%	0.09%	0.57%	0.00%	-1.10%	0%	-33.33%	0.20%
1995	0.35%	0.00%	0.00%	-0.28%	0.00%	-1.11%	0%	-33.33%	0.26%
1996	0.28%	0.00%	0.00%	2.56%	0.00%	-5.62%	0%	200.00%	0.56%
1997	0.53%	0.00%	0.00%	9.70%	0.00%	-2.38%	25.00%	-8.33%	1.00%
1998	0.61%	0.00%	0.00%	4.29%	0.00%	-3.66%	20.00%	-54.55%	0.70%
1999	0.77%	0.00%	0.00%	1.45%	0.00%	2.53%	8.33%	80.00%	0.89%
2000	-1.04%	0.00%	0.00%	21.70%	0.00%	3.81%	11.54%	0.00%	0.46%
2001	-0.61%	0.00%	0.09%	10.72%	0.00%	4.36%	-3.45%	-11.11%	0.29%
2002	0.18%	0.00%	-0.09%	-0.68%	0.00%	-0.47%	1.19%	18.75%	0.12%
2003	-0.97%	-1.54%	3.12%	-2.27%	7.14%	-1.15%	5.88%	-18.42%	-1.08%
2004	1.42%	1.56%	2.91%	2.57%	0.00%	0.77%	0.00%	-12.90%	1.48%
2005	0.29%	0.00%	0.18%	1.94%	0.00%	0.00%	0.00%	-11.11%	0.41%
2006	0.21%	0.00%	0.18%	1.22%	0.00%	0.00%	0.00%	33.33%	0.32%
2007	0.03%	0.00%	-5.13%	-5.34%	0.00%	1.15%	0.00%	25.00%	-0.38%
2008	-0.11%	84.62%	2.05%	-1.28%	0.00%	2.27%	0.00%	-10.00%	0.39%
2009	-0.34%	4.17%	-2.37%	-1.29%	0.00%	-1.11%	0.00%	-22.22%	-0.38%
2010	0.29%	0.00%	-100.00%	0.56%		0.00%	0.00%	-28.57%	0.28%
5 Yr. Avg.	0.02%	4.17%	-1.02%	-0.95%	0.00%	0.46%	0.00%	3.00%	0.07%
10 Yr. Avg.	-0.09%	4.17%	0.09%	2.73%	0.00%	0.96%	1.52%	-0.87%	0.16%

Five year average = 2005 through 2009. Ten year average = 2000 through 2009.

California Water Service Company - Westlake District

Water Supply and Demand Analysis and Projections

Average Annual Services

Year	Multi-Residential		Multi-Res. units	Commercial	Industrial	Government	Recycled	Other	Total	Annual Change
	Residential	Residential								
1984	4,048	53	937	211	15	53	0	15	4,395	
1985	4,246	53	937	237	14	52	0	18	4,620	225
1986	4,551	53	937	264	14	51	0	22	4,955	335
1987	4,947	54	937	280	14	51	0	25	5,371	416
1988	5,353	54	937	284	14	51	0	31	5,787	416
1989	5,708	53	937	318	14	52	0	31	6,176	389
1990	5,867	53	831	345	14	53	0	24	6,356	180
1991	5,934	65	1,062	347	14	70	0	19	6,449	93
1992	5,988	65	1,062	348	14	91	0	13	6,519	70
1993	6,012	65	1,061	351	14	91	0	9	6,542	23
1994	6,027	65	1,062	353	14	90	0	6	6,555	13
1995	6,048	65	1,062	352	14	89	0	4	6,572	17
1996	6,065	65	1,062	361	14	84	8	12	6,609	37
1997	6,097	65	1,062	396	14	82	10	11	6,675	66
1998	6,134	65	1,062	413	14	79	12	5	6,722	47
1999	6,181	65	1,062	419	14	81	13	9	6,782	60
2000	6,116	65	1,062	510	14	84	15	9	6,813	31
2001	6,079	65	1,063	565	14	88	14	8	6,833	20
2002	6,090	65	1,062	561	14	87	14	10	6,841	8
2003	6,031	64	1,095	548	15	86	15	8	6,767	-74
2004	6,117	65	1,127	562	15	87	15	7	6,867	100
2005	6,134	65	1,129	573	15	87	15	6	6,895	28
2006	6,147	65	1,131	580	15	87	15	8	6,917	22
2007	6,149	65	1,073	549	15	88	15	10	6,891	-26
2008	6,142	120	1,095	542	0	90	15	9	6,918	27
2009	6,121	125	1,069	535	0	89	15	7	6,892	-26
2010	6,139	125		538	0	89	15	5	6,911	19
5 Yr Avg.	6,139	123	1,099	556	0	88	15	8	6,903	5
10 Yr Avg.	6,113	123	1,091	552	0	87	15	8	6,863	11

Five year average = 2005 through 2009. Ten year average = 2000 through 2009.
 2008 change in Multi-Family Residential and Industrial services due to reclassification of services

California Water Service Company - Westlake District
Water Supply and Demand Analysis and Projections
Sales (ccf)

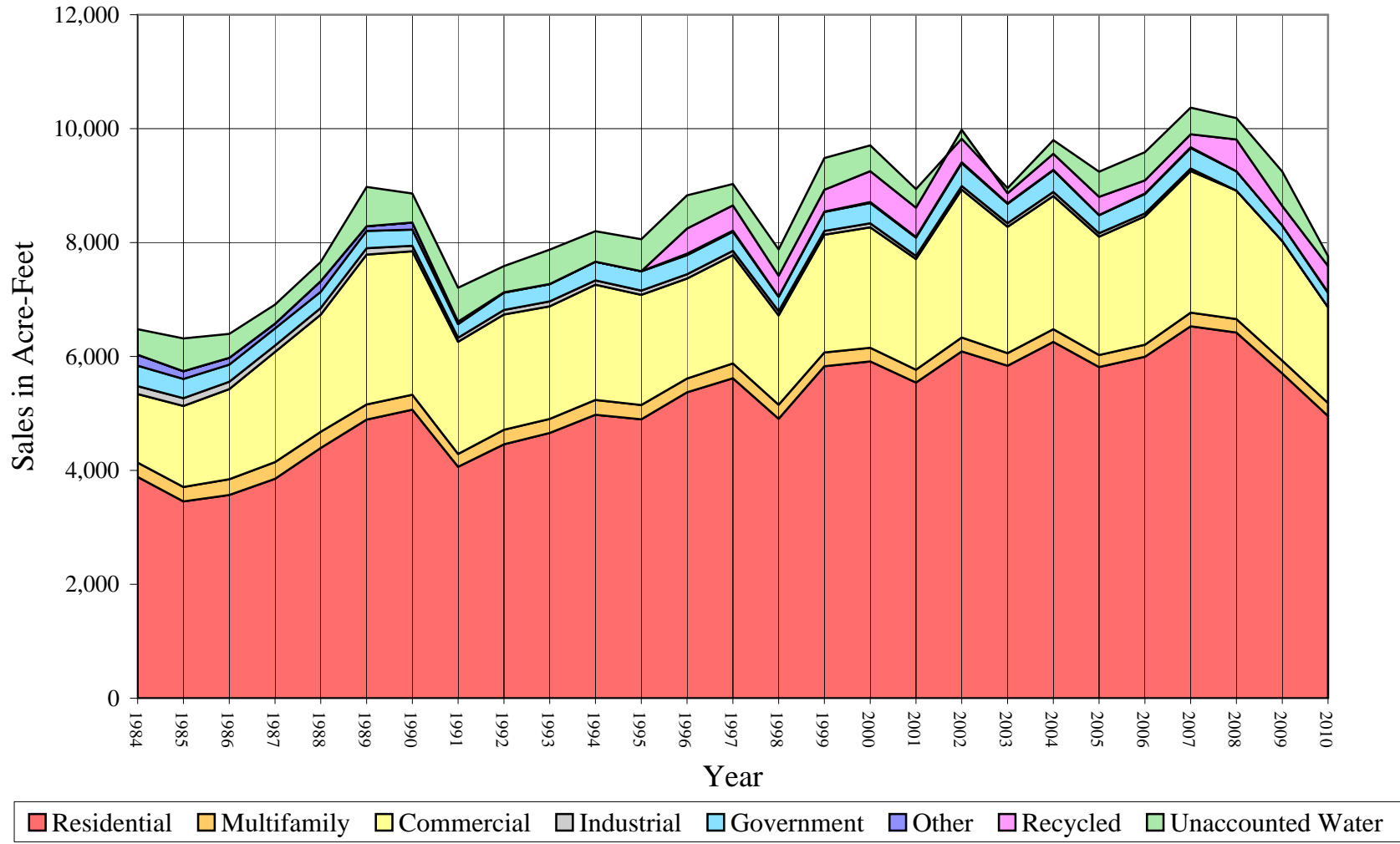
Worksheet 3

Year	Multi-							Unaccounted Water	Total(ccf) Sales	Total(ccf) Demand	Total(kgal) Demand
	Residential	Residential	Commercial	Industrial	Government	Other	Recycled				
1984	1,692,181	109,481	524,812	59,760	157,176	83,011		195,885	2,626,421	2,822,306	2,111,232
1985	1,504,875	110,836	619,348	59,566	146,913	59,410		250,966	2,500,948	2,751,914	2,058,575
1986	1,554,397	120,634	689,395	56,002	130,964	52,402		183,114	2,603,794	2,786,908	2,084,752
1987	1,677,920	128,201	842,604	48,349	131,192	37,206		145,232	2,865,472	3,010,704	2,252,163
1988	1,913,910	124,185	895,961	51,076	123,674	81,417		146,358	3,190,223	3,336,581	2,495,936
1989	2,130,463	116,106	1,145,813	49,580	131,988	35,223		301,404	3,609,173	3,910,577	2,925,315
1990	2,207,051	113,918	1,097,786	41,049	124,043	54,791		221,686	3,638,638	3,860,324	2,887,723
1991	1,769,666	98,249	857,673	30,745	104,964	19,539		258,637	2,880,836	3,139,473	2,348,489
1992	1,941,424	111,378	881,515	35,346	131,857	2,564		200,456	3,104,084	3,304,540	2,471,968
1993	2,028,783	107,585	861,192	37,548	131,236	1,706		262,301	3,168,050	3,430,351	2,566,081
1994	2,168,110	113,410	881,604	32,379	142,756	682		232,783	3,338,941	3,571,724	2,671,835
1995	2,132,611	109,755	842,619	33,188	146,655	1,444	0	244,001	3,266,272	3,510,273	2,625,867
1996	2,339,569	105,480	764,811	33,035	145,422	11,604	191,928	253,592	3,591,849	3,845,441	2,876,590
1997	2,446,704	114,226	827,367	32,826	146,756	7,420	194,248	163,089	3,769,547	3,932,636	2,941,816
1998	2,136,866	107,320	683,540	32,605	108,942	2,005	160,209	201,463	3,231,487	3,432,950	2,568,025
1999	2,538,761	105,985	900,147	29,373	144,470	2,798	167,330	242,258	3,888,864	4,131,122	3,090,294
2000	2,575,535	104,869	920,492	30,689	156,290	7,184	235,849	197,766	4,030,908	4,228,674	3,163,268
2001	2,414,520	97,881	846,315	24,157	139,998	5,326	223,816	142,165	3,752,013	3,894,178	2,913,048
2002	2,652,616	106,046	1,131,043	27,947	174,989	6,440	246,511	-67,288	4,345,592	4,278,304	3,200,394
2003	2,543,325	95,413	966,890	27,477	148,167	4,326	76,292	39,252	3,861,890	3,901,142	2,918,257
2004	2,725,018	96,871	1,018,378	31,854	165,675	2,969	122,982	104,569	4,163,747	4,268,316	3,192,922
2005	2,533,091	92,199	904,022	26,624	138,490	586	139,864	192,284	3,834,876	4,027,160	3,012,525
2006	2,611,692	91,679	981,365	23,262	147,745	4,321	99,704	216,248	3,959,768	4,176,016	3,123,877
2007	2,844,906	104,038	1,083,321	18,994	156,017	6,235	99,704	203,749	4,313,215	4,516,964	3,378,924
2008	2,796,446	103,201	983,199	0	147,011	1,451	241,742	163,226	4,273,050	4,436,276	3,318,565
2009	2,483,441	98,463	914,694	0	118,998	516	148,851	262,673	3,764,963	4,027,636	3,012,881
2010	2,158,166	99,209	734,048	0	109,191	5,219	200,372	75,252	3,306,205	3,381,457	2,529,505
5 Yr. Avg.	2,653,915	97,916	973,320	13,776	141,652	2,622	145,973	207,636	4,029,174	4,236,810	3,169,354
10 Yr. Avg.	2,618,059	99,066	974,972	21,100	149,338	3,935	163,532	145,464	4,030,002	4,175,467	3,123,466

Five year average = 2005 through 2009.

Ten year average = 2000 through 2009.

Westlake District Historical Sales



California Water Service Company - Westlake District
Water Supply and Demand Analysis and Projections
Sales (AF)

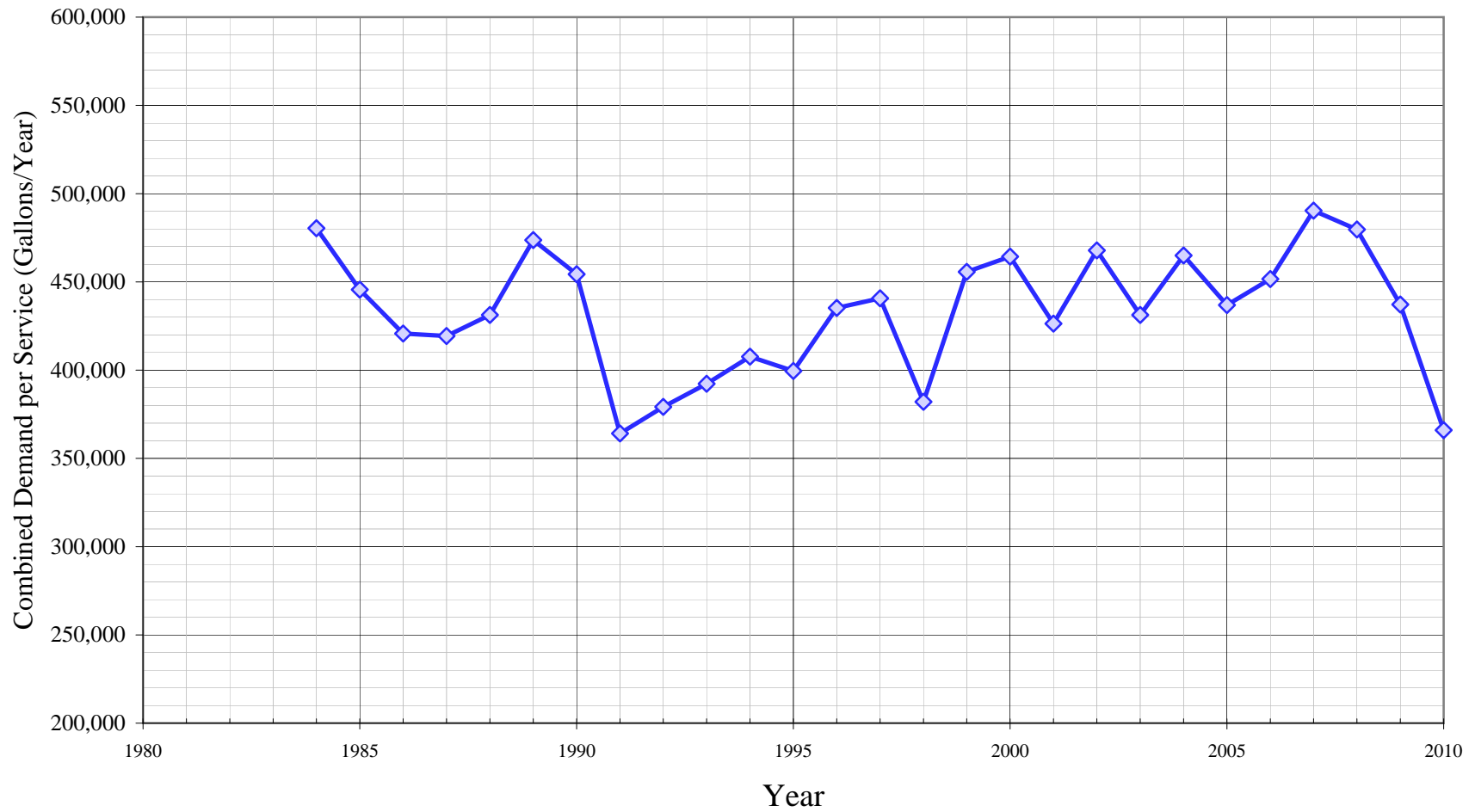
Worksheet 4

Year	Residential	Multifamily	Commercial	Industrial	Government	Other	Recycled	Unaccounted Water	Total(AF) Sales	Total(AF) Demand	Total(Mgal) Demand
1984	3,884.7	251.3	1,204.8	137.2	360.8	190.6		449.7	6,029.4	6,479.1	2,111.2
1985	3,454.7	254.4	1,421.8	136.7	337.3	136.4		576.1	5,741.4	6,317.5	2,058.6
1986	3,568.4	276.9	1,582.6	128.6	300.7	120.3		420.4	5,977.5	6,397.9	2,084.7
1987	3,852.0	294.3	1,934.4	111.0	301.2	85.4		333.4	6,578.2	6,911.6	2,252.2
1988	4,393.7	285.1	2,056.8	117.3	283.9	186.9		336.0	7,323.7	7,659.7	2,495.9
1989	4,890.9	266.5	2,630.4	113.8	303.0	80.9		691.9	8,285.5	8,977.4	2,925.3
1990	5,066.7	261.5	2,520.2	94.2	284.8	125.8		508.9	8,353.2	8,862.1	2,887.7
1991	4,062.6	225.5	1,968.9	70.6	241.0	44.9		593.7	6,613.5	7,207.2	2,348.5
1992	4,456.9	255.7	2,023.7	81.1	302.7	5.9		460.2	7,126.0	7,586.2	2,472.0
1993	4,657.4	247.0	1,977.0	86.2	301.3	3.9		602.2	7,272.8	7,875.0	2,566.1
1994	4,977.3	260.4	2,023.9	74.3	327.7	1.6		534.4	7,665.2	8,199.5	2,671.8
1995	4,895.8	252.0	1,934.4	76.2	336.7	3.3	0.0	560.1	7,498.3	8,058.5	2,625.9
1996	5,370.9	242.1	1,755.8	75.8	333.8	26.6	440.6	582.2	8,245.8	8,827.9	2,876.6
1997	5,616.9	262.2	1,899.4	75.4	336.9	17.0	445.9	374.4	8,653.7	9,028.1	2,941.8
1998	4,905.6	246.4	1,569.2	74.9	250.1	4.6	367.8	462.5	7,418.5	7,881.0	2,568.0
1999	5,828.2	243.3	2,066.5	67.4	331.7	6.4	384.1	556.1	8,927.6	9,483.8	3,090.3
2000	5,912.6	240.7	2,113.2	70.5	358.8	16.5	541.4	454.0	9,253.7	9,707.7	3,163.3
2001	5,543.0	224.7	1,942.9	55.5	321.4	12.2	513.8	326.4	8,613.4	8,939.8	2,913.0
2002	6,089.6	243.4	2,596.5	64.2	401.7	14.8	565.9	-154.5	9,976.1	9,821.6	3,200.4
2003	5,838.7	219.0	2,219.7	63.1	340.1	9.9	175.1	90.1	8,865.7	8,955.8	2,918.3
2004	6,255.8	222.4	2,337.9	73.1	380.3	6.8	282.3	240.1	9,558.6	9,798.7	3,192.9
2005	5,815.2	211.7	2,075.3	61.1	317.9	1.3	321.1	441.4	8,803.7	9,245.1	3,012.5
2006	5,995.6	210.5	2,252.9	53.4	339.2	9.9	228.9	496.4	9,090.4	9,586.8	3,123.9
2007	6,531.0	238.8	2,487.0	43.6	358.2	14.3	228.9	467.7	9,901.8	10,369.5	3,378.9
2008	6,419.8	236.9	2,257.1	0.0	337.5	3.3	555.0	374.7	9,809.6	10,184.3	3,318.6
2009	5,701.2	226.0	2,099.8	0.0	273.2	1.2	341.7	603.0	8,643.2	9,246.2	3,012.9
2010	4,954.5	227.8	1,685.1	0.0	250.7	12.0	460.0	172.8	7,590.0	7,762.8	2,529.5
5 Yr. Avg.	6,092.6	224.8	2,234.4	31.6	325.2	6.0	335.1	476.7	9,249.7	9,726.4	3,169.4
10 Yr. Avg.	6,010.2	227.4	2,238.2	48.4	342.8	9.0	375.4	333.9	9,251.6	9,585.6	3,123.5

Five year average = 2005 through 2009.

Ten year average = 2000 through 2009.

Westlake District Historical Demand per Service



California Water Service Company - Westlake District
Water Supply and Demand Analysis and Projections

Worksheet 5

Demand per Service (Gallons per Year)

Year	Multi-Residential						Total Other	Recycled	Unaccounted/ Total Services	Combined Demand/Serv
	Residential	(service)	(unit)	Commercial	Industrial	Government				
1980										
1981										
1982										
1983										
1984	312,707	1,545,235	87,404	1,860,600	2,980,239	2,218,412	4,139,770		33,341	480,371
1985	265,126	1,564,360	88,486	1,954,871	3,182,748	2,113,434	2,468,987		40,635	445,579
1986	255,498	1,702,651	96,308	1,953,422	2,992,315	1,920,939	1,781,792		27,645	420,737
1987	253,724	1,775,945	102,349	2,251,113	2,583,398	1,924,283	1,113,281		20,227	419,319
1988	267,458	1,720,312	99,143	2,359,949	2,729,107	1,814,011	1,964,650		18,919	431,301
1989	279,204	1,638,742	92,693	2,695,370	2,649,173	1,898,729	849,956		36,507	473,659
1990	281,403	1,607,860	102,547	2,380,293	2,193,342	1,750,766	1,707,772		26,091	454,330
1991	223,088	1,130,698	69,205	1,848,945	1,642,776	1,121,693	769,273		30,001	364,163
1992	242,533	1,281,793	78,452	1,894,882	1,888,618	1,083,911	147,539		23,002	379,194
1993	252,434	1,238,141	75,852	1,835,374	2,006,275	1,078,806	141,797		29,993	392,247
1994	269,099	1,305,178	79,884	1,868,231	1,730,084	1,186,543	85,029		26,565	407,603
1995	263,774	1,263,115	77,309	1,790,690	1,773,311	1,232,647	270,047	0	27,773	399,554
1996	288,560	1,213,916	74,298	1,584,816	1,765,136	1,295,038	723,366	17,946,516	28,703	435,253
1997	300,191	1,314,569	80,459	1,562,913	1,753,968	1,338,794	504,595	14,530,760	18,277	440,721
1998	260,595	1,235,091	75,594	1,238,071	1,742,160	1,031,573	299,969	9,987,055	22,420	382,033
1999	307,252	1,219,728	74,654	1,607,057	1,569,467	1,334,211	232,561	9,628,580	26,721	455,661
2000	314,994	1,206,884	73,868	1,350,369	1,639,783	1,390,443	597,112	12,167,401	21,715	464,305
2001	297,107	1,126,463	68,881	1,121,336	1,290,764	1,193,456	498,016	11,959,000	15,565	426,347
2002	325,819	1,220,430	74,697	1,508,835	1,493,272	1,498,865	507,101	13,016,686	-7,358	467,831
2003	315,456	1,115,217	65,177	1,319,861	1,370,282	1,283,822	417,558	3,804,692	4,339	431,238
2004	333,272	1,114,839	64,299	1,355,315	1,588,563	1,424,523	329,032	6,133,129	11,391	464,943
2005	308,902	1,061,071	61,089	1,180,202	1,327,742	1,190,778	73,060	6,975,036	20,860	436,899
2006	317,827	1,055,087	60,637	1,265,710	1,160,079	1,270,356	404,042	4,972,252	23,387	451,623
2007	346,095	1,197,321	72,531	1,476,103	947,233	1,326,237	466,410	4,972,252	22,118	490,339
2008	340,587	643,331	70,502	1,356,982	0	1,221,910	120,603	12,055,706	17,650	479,700
2009	303,503	589,244	68,901	1,278,951	0	1,000,188	55,142	7,423,219	28,510	437,156
2010	262,978	593,708		1,020,643	0	917,759	780,817	9,992,578	8,145	366,011
5 Yr. Avg.	323,383	909,211	66,732	1,311,589	687,011	1,201,894	223,851	7,279,693	22,505	459,143
10 Yr. Avg.	320,356	1,032,989	68,058	1,321,366	1,081,772	1,280,058	346,807	8,347,937	15,818	455,038

Five year average is from years 2005 through 2009.

Ten year average is from years 2000 through 2009.

2008 multi-family data excluded because of service reclassification

California Water Service Company - Westlake District
Water Supply and Demand Analysis and Projections
Demand per Service (Gallons per Day)

Worksheet 6

Year	Multi-Residential					Total Other	Recycled	Unaccounted/ Total Services	Combined Demand/Serv	
	Residential	(service)	(unit)	Commercial	Industrial					Government
1980										
1981										
1982										
1983										
1984	857	4,234	239	5,098	8,165	6,078	11,342	91	1,316	
1985	726	4,286	242	5,356	8,720	5,790	6,764	111	1,221	
1986	700	4,665	264	5,352	8,198	5,263	4,882	76	1,153	
1987	695	4,866	280	6,167	7,078	5,272	3,050	55	1,149	
1988	733	4,713	272	6,466	7,477	4,970	5,383	52	1,182	
1989	765	4,490	254	7,385	7,258	5,202	2,329	100	1,298	
1990	771	4,405	281	6,521	6,009	4,797	4,679	71	1,245	
1991	611	3,098	190	5,066	4,501	3,073	2,108	82	998	
1992	664	3,512	215	5,191	5,174	2,970	404	63	1,039	
1993	692	3,392	208	5,028	5,497	2,956	388	82	1,075	
1994	737	3,576	219	5,118	4,740	3,251	233	73	1,117	
1995	723	3,461	212	4,906	4,858	3,377	740	0	76	1,095
1996	791	3,326	204	4,342	4,836	3,548	1,982	49,169	79	1,192
1997	822	3,602	220	4,282	4,805	3,668	1,382	39,810	50	1,207
1998	714	3,384	207	3,392	4,773	2,826	822	27,362	61	1,047
1999	842	3,342	205	4,403	4,300	3,655	637	26,380	73	1,248
2000	863	3,307	202	3,700	4,493	3,809	1,636	33,335	59	1,272
2001	814	3,086	189	3,072	3,536	3,270	1,364	32,764	43	1,168
2002	893	3,344	205	4,134	4,091	4,106	1,389	35,662	-20	1,282
2003	864	3,055	179	3,616	3,754	3,517	1,144	10,424	12	1,181
2004	913	3,054	176	3,713	4,352	3,903	901	16,803	31	1,274
2005	846	2,907	167	3,233	3,638	3,262	200	19,110	57	1,197
2006	871	2,891	166	3,468	3,178	3,480	1,107	13,623	64	1,237
2007	948	3,280	199	4,044	2,595	3,634	1,278	13,623	61	1,343
2008	933	1,763	193	3,718	0	3,348	330	33,029	48	1,314
2009	832	1,614	189	3,504	0	2,740	151	20,338	78	1,198
2010	720	1,627	0	2,796	0	2,514	2,139	27,377	22	1,003
5 Yr. Avg.	886	2,491	183	3,593	1,882	3,293	613	19,944	62	1,258
10 Yr. Avg.	878	2,830	186	3,620	2,964	3,507	950	22,871	43	1,247

Five year average is from years 2005 through 2009.

Ten year average is from years 2000 through 2009.

2008 multi-family data excluded because of service reclassification

California Water Service Company - Westlake District
Water Supply and Demand Analysis and Projections
Percentage Change in Annual Demand

Worksheet 7

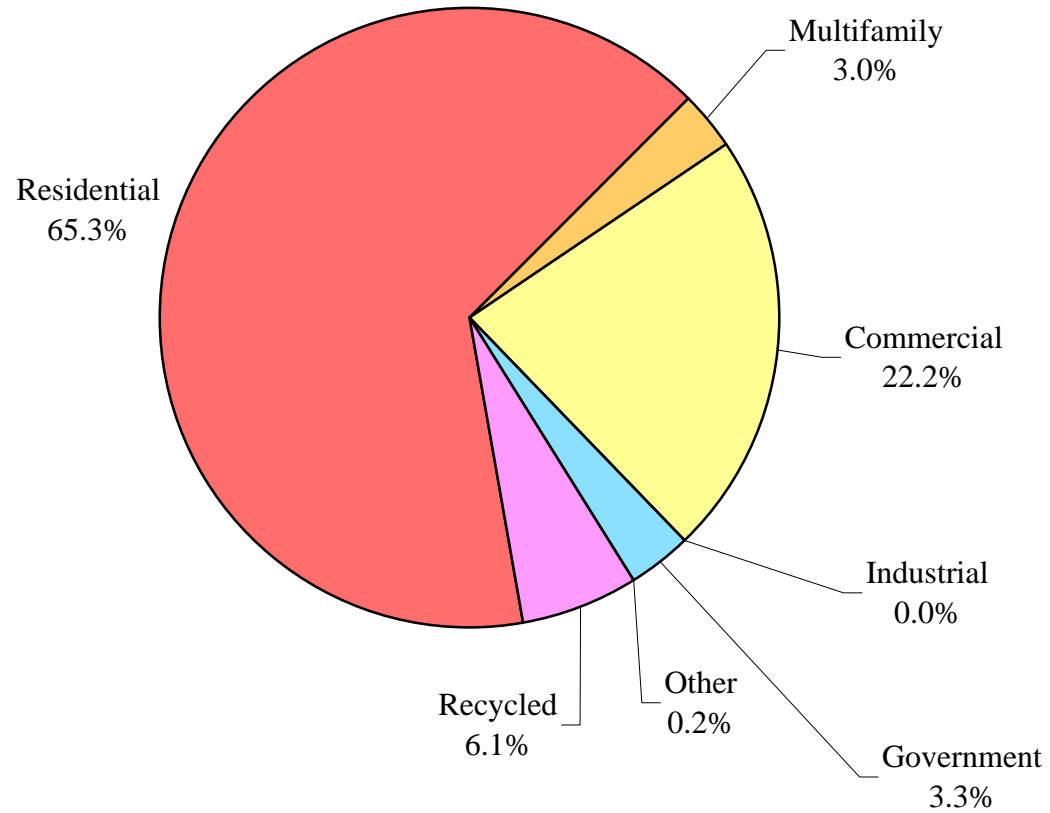
Year	Residential	Multi-Residential	Commercial	Industrial	Government	Other	Recycled	Unaccounted Water	Total
1985	-11.07%	1.24%	18.01%	-0.32%	-6.53%	-28.43%		28.12%	-2.49%
1986	3.29%	8.84%	11.31%	-5.98%	-10.86%	-11.80%		-27.04%	1.27%
1987	7.95%	6.27%	22.22%	-13.67%	0.17%	-29.00%		-20.69%	8.03%
1988	14.06%	-3.13%	6.33%	5.64%	-5.73%	118.83%		0.78%	10.82%
1989	11.31%	-6.51%	27.89%	-2.93%	6.72%	-56.74%		105.94%	17.20%
1990	3.59%	-1.88%	-4.19%	-17.21%	-6.02%	55.55%		-26.45%	-1.29%
1991	-19.82%	-13.75%	-21.87%	-25.10%	-15.38%	-64.34%		16.67%	-18.67%
1992	9.71%	13.36%	2.78%	14.97%	25.62%	-86.88%		-22.50%	5.26%
1993	4.50%	-3.41%	-2.31%	6.23%	-0.47%	-33.46%		30.85%	3.81%
1994	6.87%	5.41%	2.37%	-13.77%	8.78%	-60.02%		-11.25%	4.12%
1995	-1.64%	-3.22%	-4.42%	2.50%	2.73%	111.73%		4.82%	-1.72%
1996	9.70%	-3.90%	-9.23%	-0.46%	-0.84%	703.60%	0.00%	3.93%	9.55%
1997	4.58%	8.29%	8.18%	-0.63%	0.92%	-36.06%	1.21%	-35.69%	2.27%
1998	-12.66%	-6.05%	-17.38%	-0.67%	-25.77%	-72.98%	-17.52%	23.53%	-12.71%
1999	18.81%	-1.24%	31.69%	-9.91%	32.61%	39.55%	4.44%	20.25%	20.34%
2000	1.45%	-1.05%	2.26%	4.48%	8.18%	156.75%	40.95%	-18.37%	2.36%
2001	-6.25%	-6.66%	-8.06%	-21.28%	-10.42%	-25.86%	-5.10%	-28.11%	-7.91%
2002	9.86%	8.34%	33.64%	15.69%	24.99%	20.92%	10.14%	-147.33%	9.86%
2003	-4.12%	-10.03%	-14.51%	-1.68%	-15.33%	-32.83%	-69.05%	-158.33%	-8.82%
2004	7.14%	1.53%	5.33%	15.93%	11.82%	-31.37%	61.20%	166.40%	9.41%
2005	-7.04%	-4.82%	-11.23%	-16.42%	-16.41%	-80.26%	13.73%	83.88%	-5.65%
2006	3.10%	-0.56%	8.56%	-12.63%	6.68%	637.37%	-28.71%	12.46%	3.70%
2007	8.93%	13.48%	10.39%	-18.35%	5.60%	44.30%	0.00%	-5.78%	8.16%
2008	-1.70%	-0.80%	-9.24%	-100.00%	-5.77%	-76.73%	142.46%	-19.89%	-1.79%
2009	-11.19%	-4.59%	-6.97%		-19.06%	-64.44%	-38.43%	60.93%	-9.21%
2010	-13.10%	0.76%	-19.75%		-8.24%	911.43%	34.61%	-71.35%	-16.04%
5 Yr. Avg.	-1.58%	0.54%	-1.70%	-36.85%	-5.79%	92.05%	17.81%	26.32%	-0.96%
10 Yr. Avg.	0.02%	-0.52%	1.02%	-14.92%	-0.97%	54.79%	12.72%	-5.41%	0.01%

Five year average is from years 2005 through 2009.

Ten year average is from years 2000 through 2009.

Westlake District

Percent of Total Sales by Type of Use (2010)



California Water Service Company - Westlake District
Water Supply and Demand Analysis and Projections
Percentage of Total Sales

Worksheet 8

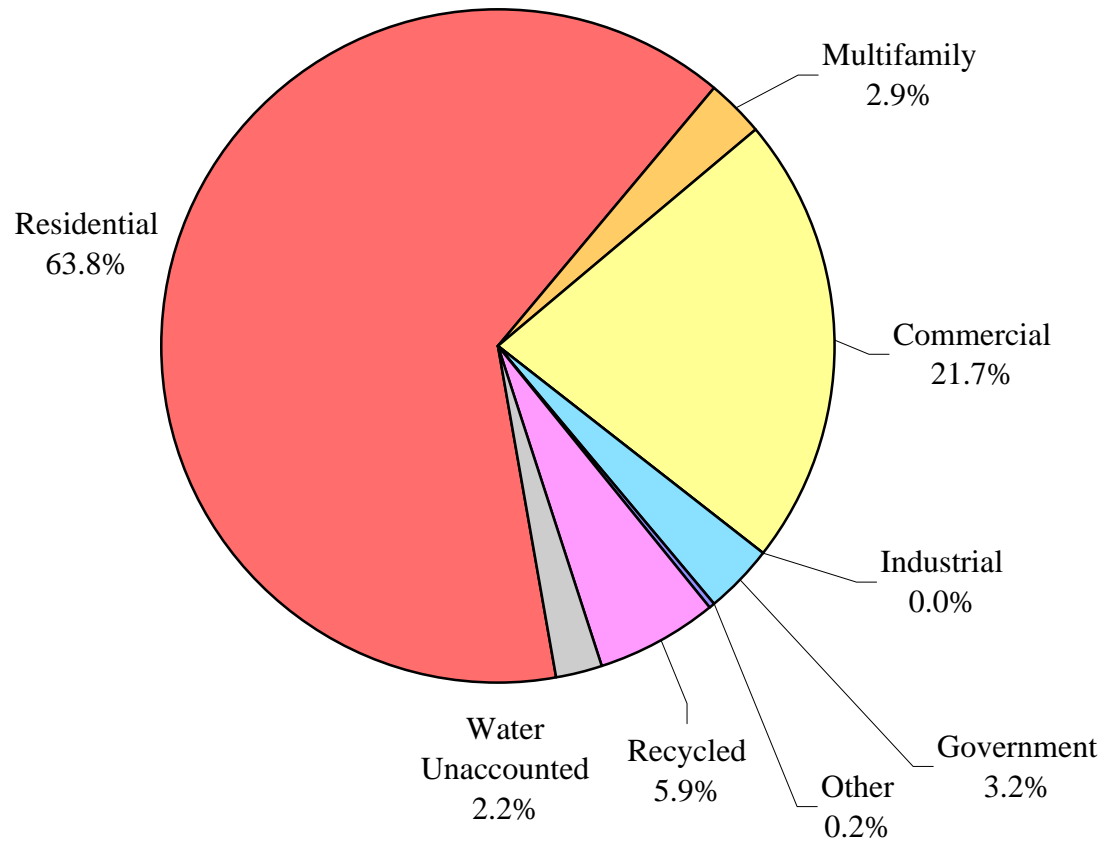
Year	Residential	Multifamily	Commercial	Industrial	Government	Other	Recycled	Percent Total
1984	64.43%	4.17%	19.98%	2.28%	5.98%	3.16%	0.00%	100.00%
1985	60.17%	4.43%	24.76%	2.38%	5.87%	2.38%	0.00%	100.00%
1986	59.70%	4.63%	26.48%	2.15%	5.03%	2.01%	0.00%	100.00%
1987	58.56%	4.47%	29.41%	1.69%	4.58%	1.30%	0.00%	100.00%
1988	59.99%	3.89%	28.08%	1.60%	3.88%	2.55%	0.00%	100.00%
1989	59.03%	3.22%	31.75%	1.37%	3.66%	0.98%	0.00%	100.00%
1990	60.66%	3.13%	30.17%	1.13%	3.41%	1.51%	0.00%	100.00%
1991	61.43%	3.41%	29.77%	1.07%	3.64%	0.68%	0.00%	100.00%
1992	62.54%	3.59%	28.40%	1.14%	4.25%	0.08%	0.00%	100.00%
1993	64.04%	3.40%	27.18%	1.19%	4.14%	0.05%	0.00%	100.00%
1994	64.93%	3.40%	26.40%	0.97%	4.28%	0.02%	0.00%	100.00%
1995	65.29%	3.36%	25.80%	1.02%	4.49%	0.04%	0.00%	100.00%
1996	65.14%	2.94%	21.29%	0.92%	4.05%	0.32%	5.34%	100.00%
1997	64.91%	3.03%	21.95%	0.87%	3.89%	0.20%	5.15%	100.00%
1998	66.13%	3.32%	21.15%	1.01%	3.37%	0.06%	4.96%	100.00%
1999	65.28%	2.73%	23.15%	0.76%	3.71%	0.07%	4.30%	100.00%
2000	63.89%	2.60%	22.84%	0.76%	3.88%	0.18%	5.85%	100.00%
2001	64.35%	2.61%	22.56%	0.64%	3.73%	0.14%	5.97%	100.00%
2002	61.04%	2.44%	26.03%	0.64%	4.03%	0.15%	5.67%	100.00%
2003	65.86%	2.47%	25.04%	0.71%	3.84%	0.11%	1.98%	100.00%
2004	65.45%	2.33%	24.46%	0.77%	3.98%	0.07%	2.95%	100.00%
2005	66.05%	2.40%	23.57%	0.69%	3.61%	0.02%	3.65%	100.00%
2006	65.96%	2.32%	24.78%	0.59%	3.73%	0.11%	2.52%	100.00%
2007	65.96%	2.41%	25.12%	0.44%	3.62%	0.14%	2.31%	100.00%
2008	65.44%	2.42%	23.01%	0.00%	3.44%	0.03%	5.66%	100.00%
2009	65.96%	2.62%	24.29%	0.00%	3.16%	0.01%	3.95%	100.00%
2010	65.28%	3.00%	22.20%	0.00%	3.30%	0.16%	6.06%	100.00%
5 Yr. Avg.	65.87%	2.43%	24.16%	0.34%	3.51%	0.06%	3.62%	100.00%
10 Yr. Avg.	65.00%	2.46%	24.17%	0.52%	3.70%	0.10%	4.05%	100.00%

Five year average is from years 2005 through 2009.

Ten year average is from years 2000 through 2009.

Westlake District

Percent of Total Demand by Type of Use (2010)



California Water Service Company - Westlake District
Water Supply and Demand Analysis and Projections
Percentage of Total Demand

Worksheet 9

Year	Residential	Multifamily	Commercial	Industrial	Government	Other	Recycled	Unaccounted Water	Percent Total
1984	59.96%	3.88%	18.60%	2.12%	5.57%	2.94%		6.94%	100.00%
1985	54.68%	4.03%	22.51%	2.16%	5.34%	2.16%		9.12%	100.00%
1986	55.77%	4.33%	24.74%	2.01%	4.70%	1.88%		6.57%	100.00%
1987	55.73%	4.26%	27.99%	1.61%	4.36%	1.24%		4.82%	100.00%
1988	57.36%	3.72%	26.85%	1.53%	3.71%	2.44%		4.39%	100.00%
1989	54.48%	2.97%	29.30%	1.27%	3.38%	0.90%		7.71%	100.00%
1990	57.17%	2.95%	28.44%	1.06%	3.21%	1.42%		5.74%	100.00%
1991	56.37%	3.13%	27.32%	0.98%	3.34%	0.62%		8.24%	100.00%
1992	58.75%	3.37%	26.68%	1.07%	3.99%	0.08%		6.07%	100.00%
1993	59.14%	3.14%	25.11%	1.09%	3.83%	0.05%		7.65%	100.00%
1994	60.70%	3.18%	24.68%	0.91%	4.00%	0.02%		6.52%	100.00%
1995	60.75%	3.13%	24.00%	0.95%	4.18%	0.04%	0.00%	6.95%	100.00%
1996	60.84%	2.74%	19.89%	0.86%	3.78%	0.30%	4.99%	6.59%	100.00%
1997	62.22%	2.90%	21.04%	0.83%	3.73%	0.19%	4.94%	4.15%	100.00%
1998	62.25%	3.13%	19.91%	0.95%	3.17%	0.06%	4.67%	5.87%	100.00%
1999	61.45%	2.57%	21.79%	0.71%	3.50%	0.07%	4.05%	5.86%	100.00%
2000	60.91%	2.48%	21.77%	0.73%	3.70%	0.17%	5.58%	4.68%	100.00%
2001	62.00%	2.51%	21.73%	0.62%	3.60%	0.14%	5.75%	3.65%	100.00%
2002	62.00%	2.48%	26.44%	0.65%	4.09%	0.15%	5.76%	-1.57%	100.00%
2003	65.19%	2.45%	24.78%	0.70%	3.80%	0.11%	1.96%	1.01%	100.00%
2004	63.84%	2.27%	23.86%	0.75%	3.88%	0.07%	2.88%	2.45%	100.00%
2005	62.90%	2.29%	22.45%	0.66%	3.44%	0.01%	3.47%	4.77%	100.00%
2006	62.54%	2.20%	23.50%	0.56%	3.54%	0.10%	2.39%	5.18%	100.00%
2007	62.98%	2.30%	23.98%	0.42%	3.45%	0.14%	2.21%	4.51%	100.00%
2008	63.04%	2.33%	22.16%	0.00%	3.31%	0.03%	5.45%	3.68%	100.00%
2009	61.66%	2.44%	22.71%	0.00%	2.95%	0.01%	3.70%	6.52%	100.00%
2010	63.82%	2.93%	21.71%	0.00%	3.23%	0.15%	5.93%	2.23%	100.00%
5 Yr. Avg.	62.62%	2.31%	22.96%	0.33%	3.34%	0.06%	3.44%	4.93%	100.00%
10 Yr. Avg.	62.71%	2.37%	23.34%	0.51%	3.58%	0.09%	3.91%	3.49%	100.00%

Five year average is from years 2005 through 2009.

Ten year average is from years 2000 through 2009.

California Water Service Company - Westlake District
Water Supply and Demand Analysis and Projections

Worksheet 10

Scenario #1: Based on Maintaining Growth at the 10-Year Average Annual Growth and Low Demand per Service for each Customer Class.
 5-Year Average High

Summary of Historical Growth Rate from Worksheet 2			
Customer Type	5 Yr. Avg. Historical Growth Rate	Individual Growth Rate Selected	Notes
Single Family Residential	0.016%	0.016%	Historical growth rate used
Multi Family Residential	4.170%	0.072%	Overall growth rate used
Commercial	-0.950%	0.072%	Overall growth rate used
Industrial	0.000%	0.000%	Zero growth rate expected
Government	0.462%	0.072%	Overall growth rate used
Recycled Water	0.000%	0.072%	Overall growth rate used
Other	3.000%	0.072%	Overall growth rate used
Overall	0.072%	0.023%	

Summary of Lowest Demand per Service from Worksheets 5 and 6										
Demand/Serv. Units	Residential	Multi-Residential		Commercial	Industrial	Government	Reclaimed	Total Other	Unaccounted Total Serv.	Combined Demand/Serv.
		(service)	(unit)							
Gal/Service/Yr	223,088	1,130,698	69,205	1,020,643	0	1,121,693	0	55,142	30,001	364,163
AF/Service/Yr	0.685	3.470	0.212	3.132	0.000	3.442	0.000	0.169	0.092	1.118
Gal/Service/Day	611	3,098	190	2,796	0	3,073	0	151	82	998

California Water Service Company - Westlake District
Water Supply and Demand Analysis and Projections

Worksheet 10

30-year projection Summary

Scenario #1: Based on Maintaining Growth at the

- 10-Year
 5-Year

Average Annual Growth and

Low

Average

High

Demand per Service for each Customer Class.

Customer Type	Projected Services 2010	Projected Services 2015	Projected Services 2020	Projected Services 2025	Projected Services 2030	Projected Services 2035	Projected Services 2040	Services projected to be added from 2010 - 2040
Single Family Residential	6,122	6,127	6,132	6,137	6,142	6,147	6,151	29
Multi Family Residential	125	126	126	126	127	127	128	3
Commercial	535	537	539	541	543	545	547	12
Industrial	0	0	0	0	0	0	0	0
Government	89	89	90	90	90	91	91	2
Recycled Water	15	15	15	15	15	15	15	0
Other	7	7	7	7	7	7	7	0
Total	6,894	6,901	6,909	6,917	6,924	6,932	6,940	46

Customer Type	Projected Demand 2010 (ccf)	Projected Demand 2015 (ccf)	Projected Demand 2020 (ccf)	Projected Demand 2025 (ccf)	Projected Demand 2030 (ccf)	Projected Demand 2035 (ccf)	Projected Demand 2040 (ccf)	Projected demand to be added from 2010 - 2040 (ccf)
Single Family Residential	1,825,719	1,827,180	1,828,642	1,830,105	1,831,570	1,833,036	1,834,502	8,784
Multi Family Residential	189,076	189,757	190,441	191,128	191,817	192,509	193,203	4,127
Commercial	730,477	733,111	735,754	738,406	741,069	743,740	746,422	15,944
Industrial	0	0	0	0	0	0	0	0
Government	133,550	134,031	134,514	134,999	135,486	135,975	136,465	2,915
Recycled Water	0	0	0	0	0	0	0	0
Other	516	518	520	522	524	526	528	11
Unaccounted	276,464	276,772	277,080	277,390	277,699	278,010	278,320	1,857
Total	3,155,802	3,161,369	3,166,952	3,172,551	3,178,165	3,183,794	3,189,439	33,638

Customer Type	Projected Demand 2010 (AF)	Projected Demand 2015 (AF)	Projected Demand 2020 (AF)	Projected Demand 2025 (AF)	Projected Demand 2030 (AF)	Projected Demand 2035 (AF)	Projected Demand 2040 (AF)	Projected demand to be added from 2010 - 2040 (AF)
Single Family Residential	4,191	4,195	4,198	4,201	4,205	4,208	4,211	20
Multi Family Residential	434	436	437	439	440	442	444	9
Commercial	1,677	1,683	1,689	1,695	1,701	1,707	1,714	37
Industrial	0	0	0	0	0	0	0	0
Government	307	308	309	310	311	312	313	7
Recycled Water	0	0	0	0	0	0	0	0
Other	1	1	1	1	1	1	1	0
Unaccounted	635	635	636	637	638	638	639	4
Total	7,245	7,258	7,270	7,283	7,296	7,309	7,322	77

California Water Service Company - Westlake District
Water Supply and Demand Analysis and Projections

Worksheet 10

2000's Projections

Scenario #1: Based on Maintaining Growth at the

- 10-Year
 5-Year

Average Annual Growth and

- Low
 Average
 High

Demand per Service for each Customer Class.

Customer Type	Actual Services 2001	Actual Services 2002	Actual Services 2003	Actual Services 2004	Actual Services 2005	Actual Services 2006	Actual Services 2007	Actual Services 2008	Actual Services 2009	Projected Services 2010
Residential	6,079	6,090	6,031	6,117	6,134	6,147	6,149	6,142	6,121	6,122
Multi- Residential	65	65	64	65	65	65	65	120	125	125
Commercial	565	561	548	562	573	580	549	542	535	535
Industrial	14	14	15	15	15	15	15	0	0	0
Government	88	87	86	87	87	87	88	90	89	89
Recycled	14	14	15	15	15	15	15	15	15	15
Other	8	10	8	7	6	8	10	9	7	7
Total	6,833	6,841	6,767	6,867	6,895	6,917	6,891	6,918	6,892	6,894

Customer Type	Demand 2001(ccf)	Demand 2002(ccf)	Demand 2003(ccf)	Demand 2004(ccf)	Demand 2005(ccf)	Demand 2006(ccf)	Demand 2007(ccf)	Demand 2008(ccf)	Demand 2009(ccf)	Demand 2010(ccf)
Residential	1,812,976	1,816,231	1,798,611	1,824,085	1,829,378	1,833,180	1,833,777	1,831,689	1,825,427	1,825,719
Multi- Residential	98,249	98,249	96,737	98,249	98,249	98,249	98,249	181,382	188,940	189,076
Commercial	770,315	765,085	747,689	766,904	781,799	791,350	749,053	739,503	729,952	730,477
Industrial	0	0	0	0	0	0	0	0	0	0
Government	131,579	130,955	129,455	130,455	130,455	130,455	131,954	134,953	133,454	133,550
Recycled	0	0	0	0	0	0	0	0	0	0
Other	590	700	571	498	442	590	737	663	516	516
Unaccounted	274,019	274,354	271,396	275,413	276,533	277,405	276,362	277,445	276,402	276,464
Total	3,087,728	3,085,573	3,044,460	3,095,603	3,116,855	3,131,228	3,090,132	3,165,635	3,154,690	3,155,802

Customer Type	Demand 2001(AF)	Demand 2002(AF)	Demand 2003(AF)	Demand 2004(AF)	Demand 2005(AF)	Demand 2006(AF)	Demand 2007(AF)	Demand 2008(AF)	Demand 2009(AF)	Demand 2010(AF)
Residential	4,162	4,170	4,129	4,188	4,200	4,208	4,210	4,205	4,191	4,191
Multi- Residential	226	226	222	226	226	226	226	416	434	434
Commercial	1,768	1,756	1,716	1,761	1,795	1,817	1,720	1,698	1,676	1,677
Industrial	0	0	0	0	0	0	0	0	0	0
Government	302	301	297	299	299	299	303	310	306	307
Recycled	0	0	0	0	0	0	0	0	0	0
Other	1	2	1	1	1	1	2	2	1	1
Unaccounted	629	630	623	632	635	637	634	637	635	635
Total	7,088	7,084	6,989	7,107	7,155	7,188	7,094	7,267	7,242	7,245

California Water Service Company - Westlake District

Water Supply and Demand Analysis and Projections

2010's Projections

Scenario #1: Based on Maintaining Growth at the 10-Year Average Annual Growth and Low Demand per Service for each Customer Class.
 5-Year Average Annual Growth and Average Demand per Service for each Customer Class.
 High

Customer Type	Projected Services 2011	Projected Services 2012	Projected Services 2013	Projected Services 2014	Projected Services 2015	Projected Services 2016	Projected Services 2017	Projected Services 2018	Projected Services 2019	Projected Services 2020
Residential	6,123	6,124	6,125	6,126	6,127	6,128	6,129	6,130	6,131	6,132
Multi- Residential	125	125	125	125	126	126	126	126	126	126
Commercial	536	536	537	537	537	538	538	538	539	539
Industrial	0	0	0	0	0	0	0	0	0	0
Government	89	89	89	89	89	89	90	90	90	90
Recycled	15	15	15	15	15	15	15	15	15	15
Other	7	7	7	7	7	7	7	7	7	7
Total	6,895	6,897	6,898	6,900	6,901	6,903	6,904	6,906	6,907	6,909

Customer Type	Demand 2011(ccf)	Demand 2012(ccf)	Demand 2013(ccf)	Demand 2014(ccf)	Demand 2015(ccf)	Demand 2016(ccf)	Demand 2017(ccf)	Demand 2018(ccf)	Demand 2019(ccf)	Demand 2020(ccf)
Residential	1,826,011	1,826,303	1,826,595	1,826,887	1,827,180	1,827,472	1,827,764	1,828,057	1,828,349	1,828,642
Multi- Residential	189,212	189,348	189,484	189,621	189,757	189,894	190,031	190,167	190,304	190,441
Commercial	731,003	731,530	732,056	732,583	733,111	733,639	734,167	734,696	735,225	735,754
Industrial	0	0	0	0	0	0	0	0	0	0
Government	133,646	133,742	133,838	133,935	134,031	134,128	134,224	134,321	134,418	134,514
Recycled	0	0	0	0	0	0	0	0	0	0
Other	517	517	517	518	518	519	519	519	520	520
Unaccounted	276,525	276,587	276,649	276,710	276,772	276,834	276,895	276,957	277,019	277,080
Total	3,156,914	3,158,027	3,159,140	3,160,254	3,161,369	3,162,485	3,163,601	3,164,717	3,165,834	3,166,952

Customer Type	Demand 2011(AF)	Demand 2012(AF)	Demand 2013(AF)	Demand 2014(AF)	Demand 2015(AF)	Demand 2016(AF)	Demand 2017(AF)	Demand 2018(AF)	Demand 2019(AF)	Demand 2020(AF)
Residential	4,192	4,193	4,193	4,194	4,195	4,195	4,196	4,197	4,197	4,198
Multi- Residential	434	435	435	435	436	436	436	437	437	437
Commercial	1,678	1,679	1,681	1,682	1,683	1,684	1,685	1,687	1,688	1,689
Industrial	0	0	0	0	0	0	0	0	0	0
Government	307	307	307	307	308	308	308	308	309	309
Recycled	0	0	0	0	0	0	0	0	0	0
Other	1	1	1	1	1	1	1	1	1	1
Unaccounted	635	635	635	635	635	636	636	636	636	636
Total	7,247	7,250	7,252	7,255	7,258	7,260	7,263	7,265	7,268	7,270

California Water Service Company - Westlake District
Water Supply and Demand Analysis and Projections

Worksheet 10

2020's Projections

Scenario #1: Based on Maintaining Growth at the 10-Year Average Annual Growth and Low Demand per Service for each Customer Class.
 5-Year Average High

Customer Type	Projected Services 2021	Projected Services 2022	Projected Services 2023	Projected Services 2024	Projected Services 2025	Projected Services 2026	Projected Services 2027	Projected Services 2028	Projected Services 2029	Projected Services 2030
Residential	6,133	6,134	6,135	6,136	6,137	6,138	6,139	6,140	6,141	6,142
Multi- Residential	126	126	126	126	126	127	127	127	127	127
Commercial	540	540	540	541	541	542	542	542	543	543
Industrial	0	0	0	0	0	0	0	0	0	0
Government	90	90	90	90	90	90	90	90	90	90
Recycled	15	15	15	15	15	15	15	15	15	15
Other	7	7	7	7	7	7	7	7	7	7
Total	6,910	6,912	6,914	6,915	6,917	6,918	6,920	6,921	6,923	6,924

Customer Type	Demand 2021(ccf)	Demand 2022(ccf)	Demand 2023(ccf)	Demand 2024(ccf)	Demand 2025(ccf)	Demand 2026(ccf)	Demand 2027(ccf)	Demand 2028(ccf)	Demand 2029(ccf)	Demand 2030(ccf)
Residential	1,828,934	1,829,227	1,829,520	1,829,813	1,830,105	1,830,398	1,830,691	1,830,984	1,831,277	1,831,570
Multi- Residential	190,579	190,716	190,853	190,990	191,128	191,266	191,403	191,541	191,679	191,817
Commercial	736,284	736,814	737,344	737,875	738,406	738,938	739,470	740,003	740,535	741,069
Industrial	0	0	0	0	0	0	0	0	0	0
Government	134,611	134,708	134,805	134,902	134,999	135,097	135,194	135,291	135,389	135,486
Recycled	0	0	0	0	0	0	0	0	0	0
Other	520	521	521	522	522	522	523	523	523	524
Unaccounted	277,142	277,204	277,266	277,328	277,390	277,452	277,513	277,575	277,637	277,699
Total	3,168,071	3,169,190	3,170,309	3,171,430	3,172,551	3,173,672	3,174,794	3,175,917	3,177,041	3,178,165

Customer Type	Demand 2021(AF)	Demand 2022(AF)	Demand 2023(AF)	Demand 2024(AF)	Demand 2025(AF)	Demand 2026(AF)	Demand 2027(AF)	Demand 2028(AF)	Demand 2029(AF)	Demand 2030(AF)
Residential	4,199	4,199	4,200	4,201	4,201	4,202	4,203	4,203	4,204	4,205
Multi- Residential	438	438	438	438	439	439	439	440	440	440
Commercial	1,690	1,692	1,693	1,694	1,695	1,696	1,698	1,699	1,700	1,701
Industrial	0	0	0	0	0	0	0	0	0	0
Government	309	309	309	310	310	310	310	311	311	311
Recycled	0	0	0	0	0	0	0	0	0	0
Other	1	1	1	1	1	1	1	1	1	1
Unaccounted	636	636	637	637	637	637	637	637	637	638
Total	7,273	7,276	7,278	7,281	7,283	7,286	7,288	7,291	7,294	7,296

California Water Service Company - Westlake District
Water Supply and Demand Analysis and Projections

Worksheet 10

2030's Projections

Scenario #1: Based on Maintaining Growth at the 10-Year Average Annual Growth and Low Demand per Service for each Customer Class.
 5-Year Average High

Customer Type	Projected Services 2031	Projected Services 2032	Projected Services 2033	Projected Services 2034	Projected Services 2035	Projected Services 2036	Projected Services 2037	Projected Services 2038	Projected Services 2039	Projected Services 2040
Residential	6,143	6,144	6,145	6,146	6,147	6,147	6,148	6,149	6,150	6,151
Multi- Residential	127	127	127	127	127	127	128	128	128	128
Commercial	544	544	544	545	545	545	546	546	547	547
Industrial	0	0	0	0	0	0	0	0	0	0
Government	90	90	91	91	91	91	91	91	91	91
Recycled	15	15	15	15	15	15	15	15	15	15
Other	7	7	7	7	7	7	7	7	7	7
Total	6,926	6,927	6,929	6,931	6,932	6,934	6,935	6,937	6,938	6,940

Customer Type	Demand 2031(ccf)	Demand 2032(ccf)	Demand 2033(ccf)	Demand 2034(ccf)	Demand 2035(ccf)	Demand 2036(ccf)	Demand 2037(ccf)	Demand 2038(ccf)	Demand 2039(ccf)	Demand 2040(ccf)
Residential	1,831,863	1,832,156	1,832,449	1,832,742	1,833,036	1,833,329	1,833,622	1,833,916	1,834,209	1,834,502
Multi- Residential	191,955	192,093	192,232	192,370	192,509	192,647	192,786	192,925	193,064	193,203
Commercial	741,602	742,136	742,670	743,205	743,740	744,276	744,812	745,348	745,884	746,422
Industrial	0	0	0	0	0	0	0	0	0	0
Government	135,584	135,681	135,779	135,877	135,975	136,072	136,170	136,268	136,367	136,465
Recycled	0	0	0	0	0	0	0	0	0	0
Other	524	525	525	525	526	526	527	527	527	528
Unaccounted	277,761	277,823	277,885	277,948	278,010	278,072	278,134	278,196	278,258	278,320
Total	3,179,289	3,180,415	3,181,541	3,182,667	3,183,794	3,184,922	3,186,050	3,187,179	3,188,309	3,189,439

Customer Type	Demand 2031(AF)	Demand 2032(AF)	Demand 2033(AF)	Demand 2034(AF)	Demand 2035(AF)	Demand 2036(AF)	Demand 2037(AF)	Demand 2038(AF)	Demand 2039(AF)	Demand 2040(AF)
Residential	4,205	4,206	4,207	4,207	4,208	4,209	4,209	4,210	4,211	4,211
Multi- Residential	441	441	441	442	442	442	443	443	443	444
Commercial	1,702	1,704	1,705	1,706	1,707	1,709	1,710	1,711	1,712	1,714
Industrial	0	0	0	0	0	0	0	0	0	0
Government	311	311	312	312	312	312	313	313	313	313
Recycled	0	0	0	0	0	0	0	0	0	0
Other	1	1	1	1	1	1	1	1	1	1
Unaccounted	638	638	638	638	638	638	639	639	639	639
Total	7,299	7,301	7,304	7,306	7,309	7,312	7,314	7,317	7,319	7,322

California Water Service Company - Westlake District
Water Supply and Demand Analysis and Projections

Worksheet 11

Scenario #2: Based on Maintaining Growth at the 10-Year Average Annual Growth and Low Demand per Service for each Customer Class.
 5-Year Average High

Summary of Historical Growth Rate from Worksheet 2			
Customer Type	5 Yr. Avg. Historical Growth Rate	Individual Growth Rate Selected	Notes
Single Family Residential	0.016%	0.016%	Historical growth rate used
Multi Family Residential	4.170%	0.072%	Overall growth rate used
Commercial	-0.950%	0.072%	Overall growth rate used
Industrial	0.000%	0.000%	Zero growth rate expected
Government	0.462%	0.072%	Overall growth rate used
Recycled Water	0.000%	0.072%	Overall growth rate used
Other	3.000%	0.072%	Overall growth rate used
Overall	0.072%	0.023%	

Summary of Average Demand per Service from Worksheets 5 and 6										
Demand/Serv. Units	Multi-Residential						Reclaimed	Total Other	Unaccounted Total Serv.	Combined Demand/Serv.
	Residential	(service)	(unit)	Commercial	Industrial	Government				
Gal/Service/Yr	288,560	643,331	74,298	1,584,816	1,765,136	1,295,038	723,366	9,097,804	28,703	435,253
AF/Service/Yr	0.886	1.974	0.228	4.864	5.417	3.974	2.220	27.920	0.088	1.336
Gal/Service/Day	791	1,763	204	4,342	4,836	3,548	1,982	24,925	79	1,192

California Water Service Company - Westlake District
Water Supply and Demand Analysis and Projections

30-year projection Summary

Scenario #2: Based on Maintaining Growth at the

- 10-Year
 5-Year

Average Annual Growth and

- Low
 Average
 High

Demand per Service for each Customer Class.

Customer Type	Projected Services 2010	Projected Services 2015	Projected Services 2020	Projected Services 2025	Projected Services 2030	Projected Services 2035	Projected Services 2040	Services projected to be added from 2010 - 2040
Single Family Residential	6,122	6,127	6,132	6,137	6,142	6,147	6,151	29
Multi Family Residential	125	126	126	126	127	127	128	3
Commercial	535	537	539	541	543	545	547	12
Industrial	0	0	0	0	0	0	0	0
Government	89	89	90	90	90	91	91	2
Recycled Water	15	15	15	15	15	15	15	0
Other	7	7	7	7	7	7	7	0
Total	6,894	6,901	6,909	6,917	6,924	6,932	6,940	46

Customer Type	Projected Demand 2010 (ccf)	Projected Demand 2015 (ccf)	Projected Demand 2020 (ccf)	Projected Demand 2025 (ccf)	Projected Demand 2030 (ccf)	Projected Demand 2035 (ccf)	Projected Demand 2040 (ccf)	Projected demand to be added from 2010 - 2040 (ccf)
Single Family Residential	2,361,539	2,363,429	2,365,320	2,367,213	2,369,108	2,371,003	2,372,901	11,362
Multi Family Residential	107,578	107,966	108,355	108,746	109,138	109,531	109,926	2,348
Commercial	1,134,257	1,138,346	1,142,450	1,146,569	1,150,703	1,154,851	1,159,015	24,757
Industrial	0	0	0	0	0	0	0	0
Government	154,188	154,744	155,302	155,862	156,424	156,988	157,554	3,365
Recycled Water	182,561	183,219	183,879	184,542	185,207	185,875	186,545	3,985
Other	6,774	6,798	6,823	6,847	6,872	6,897	6,922	148
Unaccounted	264,509	264,804	265,099	265,395	265,691	265,988	266,285	1,776
Total	4,211,406	4,219,306	4,227,229	4,235,174	4,243,142	4,251,133	4,259,148	47,742

Customer Type	Projected Demand 2010 (AF)	Projected Demand 2015 (AF)	Projected Demand 2020 (AF)	Projected Demand 2025 (AF)	Projected Demand 2030 (AF)	Projected Demand 2035 (AF)	Projected Demand 2040 (AF)	Projected demand to be added from 2010 - 2040 (AF)
Single Family Residential	5,421	5,426	5,430	5,434	5,439	5,443	5,447	26
Multi Family Residential	247	248	249	250	251	251	252	5
Commercial	2,604	2,613	2,623	2,632	2,642	2,651	2,661	57
Industrial	0	0	0	0	0	0	0	0
Government	354	355	357	358	359	360	362	8
Recycled Water	419	421	422	424	425	427	428	9
Other	16	16	16	16	16	16	16	0
Unaccounted	607	608	609	609	610	611	611	4
Total	9,668	9,686	9,704	9,723	9,741	9,759	9,778	110

California Water Service Company - Westlake District
Water Supply and Demand Analysis and Projections

Worksheet 11

2000's Projections

Scenario #2: Based on Maintaining Growth at the

- 10-Year
 5-Year

Average Annual Growth and

- Low
 Average
 High

Demand per Service for each Customer Class.

Customer Type	Actual Services 2001	Actual Services 2002	Actual Services 2003	Actual Services 2004	Actual Services 2005	Actual Services 2006	Actual Services 2007	Actual Services 2008	Actual Services 2009	Projected Services 2010
Residential	6,079	6,090	6,031	6,117	6,134	6,147	6,149	6,142	6,121	6,122
Multi- Residential	65	65	64	65	65	65	65	120	125	125
Commercial	565	561	548	562	573	580	549	542	535	535
Industrial	14	14	15	15	15	15	15	0	0	0
Government	88	87	86	87	87	87	88	90	89	89
Recycled	14	14	15	15	15	15	15	15	15	15
Other	8	10	8	7	6	8	10	9	7	7
Total	6,833	6,841	6,767	6,867	6,895	6,917	6,891	6,918	6,892	6,894

Customer Type	Demand 2001(ccf)	Demand 2002(ccf)	Demand 2003(ccf)	Demand 2004(ccf)	Demand 2005(ccf)	Demand 2006(ccf)	Demand 2007(ccf)	Demand 2008(ccf)	Demand 2009(ccf)	Demand 2010(ccf)
Residential	2,345,056	2,349,267	2,326,476	2,359,425	2,366,272	2,371,191	2,371,962	2,369,262	2,361,161	2,361,539
Multi- Residential	105,480	105,480	103,857	105,480	105,480	105,480	105,480	103,201	107,501	107,578
Commercial	1,196,116	1,187,995	1,160,983	1,190,819	1,213,947	1,228,777	1,163,101	1,148,271	1,133,441	1,134,257
Industrial	33,035	33,035	35,394	35,394	35,394	35,394	35,394	0	0	0
Government	151,913	151,192	149,461	150,615	150,615	150,615	152,346	155,809	154,077	154,188
Recycled	170,267	172,294	182,429	182,429	182,429	182,429	182,429	182,429	182,429	182,561
Other	7,736	9,186	7,494	6,527	5,802	7,736	9,670	8,703	6,769	6,774
Unaccounted	262,170	262,490	259,660	263,504	264,575	265,409	264,412	265,448	264,450	264,509
Total	4,271,773	4,270,939	4,225,754	4,294,194	4,324,515	4,347,031	4,284,795	4,233,122	4,209,829	4,211,406

Customer Type	Demand 2001(AF)	Demand 2002(AF)	Demand 2003(AF)	Demand 2004(AF)	Demand 2005(AF)	Demand 2006(AF)	Demand 2007(AF)	Demand 2008(AF)	Demand 2009(AF)	Demand 2010(AF)
Residential	5,384	5,393	5,341	5,417	5,432	5,444	5,445	5,439	5,421	5,421
Multi- Residential	242	242	238	242	242	242	242	237	247	247
Commercial	2,746	2,727	2,665	2,734	2,787	2,821	2,670	2,636	2,602	2,604
Industrial	76	76	81	81	81	81	81	0	0	0
Government	349	347	343	346	346	346	350	358	354	354
Recycled	391	396	419	419	419	419	419	419	419	419
Other	18	21	17	15	13	18	22	20	16	16
Unaccounted	602	603	596	605	607	609	607	609	607	607
Total	9,807	9,805	9,701	9,858	9,928	9,979	9,837	9,718	9,665	9,668

California Water Service Company - Westlake District

Water Supply and Demand Analysis and Projections

2010's Projections

Scenario #2: Based on Maintaining Growth at the 10-Year 5-Year Average Annual Growth and Low Average High Demand per Service for each Customer Class.

Customer Type	Projected Services 2011	Projected Services 2012	Projected Services 2013	Projected Services 2014	Projected Services 2015	Projected Services 2016	Projected Services 2017	Projected Services 2018	Projected Services 2019	Projected Services 2020
Residential	6,123	6,124	6,125	6,126	6,127	6,128	6,129	6,130	6,131	6,132
Multi- Residential	125	125	125	125	126	126	126	126	126	126
Commercial	536	536	537	537	537	538	538	538	539	539
Industrial	0	0	0	0	0	0	0	0	0	0
Government	89	89	89	89	89	89	90	90	90	90
Recycled	15	15	15	15	15	15	15	15	15	15
Other	7	7	7	7	7	7	7	7	7	7
Total	6,895	6,897	6,898	6,900	6,901	6,903	6,904	6,906	6,907	6,909

Customer Type	Demand 2011(ccf)	Demand 2012(ccf)	Demand 2013(ccf)	Demand 2014(ccf)	Demand 2015(ccf)	Demand 2016(ccf)	Demand 2017(ccf)	Demand 2018(ccf)	Demand 2019(ccf)	Demand 2020(ccf)
Residential	2,361,917	2,362,295	2,362,673	2,363,051	2,363,429	2,363,807	2,364,185	2,364,564	2,364,942	2,365,320
Multi- Residential	107,655	107,733	107,811	107,888	107,966	108,044	108,121	108,199	108,277	108,355
Commercial	1,135,074	1,135,891	1,136,709	1,137,527	1,138,346	1,139,166	1,139,986	1,140,807	1,141,628	1,142,450
Industrial	0	0	0	0	0	0	0	0	0	0
Government	154,299	154,410	154,522	154,633	154,744	154,856	154,967	155,079	155,190	155,302
Recycled	182,692	182,823	182,955	183,087	183,219	183,351	183,483	183,615	183,747	183,879
Other	6,779	6,784	6,788	6,793	6,798	6,803	6,808	6,813	6,818	6,823
Unaccounted	264,568	264,627	264,686	264,745	264,804	264,863	264,922	264,981	265,040	265,099
Total	4,212,984	4,214,563	4,216,143	4,217,724	4,219,306	4,220,889	4,222,472	4,224,057	4,225,642	4,227,229

Customer Type	Demand 2011(AF)	Demand 2012(AF)	Demand 2013(AF)	Demand 2014(AF)	Demand 2015(AF)	Demand 2016(AF)	Demand 2017(AF)	Demand 2018(AF)	Demand 2019(AF)	Demand 2020(AF)
Residential	5,422	5,423	5,424	5,425	5,426	5,427	5,427	5,428	5,429	5,430
Multi- Residential	247	247	248	248	248	248	248	248	249	249
Commercial	2,606	2,608	2,610	2,611	2,613	2,615	2,617	2,619	2,621	2,623
Industrial	0	0	0	0	0	0	0	0	0	0
Government	354	354	355	355	355	356	356	356	356	357
Recycled	419	420	420	420	421	421	421	422	422	422
Other	16	16	16	16	16	16	16	16	16	16
Unaccounted	607	608	608	608	608	608	608	608	608	609
Total	9,672	9,675	9,679	9,683	9,686	9,690	9,694	9,697	9,701	9,704

California Water Service Company - Westlake District

Water Supply and Demand Analysis and Projections

2020's Projections

Scenario #2: Based on Maintaining Growth at the 10-Year 5-Year Average Annual Growth and Low Average High Demand per Service for each Customer Class.

Customer Type	Projected Services 2021	Projected Services 2022	Projected Services 2023	Projected Services 2024	Projected Services 2025	Projected Services 2026	Projected Services 2027	Projected Services 2028	Projected Services 2029	Projected Services 2030
Residential	6,133	6,134	6,135	6,136	6,137	6,138	6,139	6,140	6,141	6,142
Multi- Residential	126	126	126	126	126	127	127	127	127	127
Commercial	540	540	540	541	541	542	542	542	543	543
Industrial	0	0	0	0	0	0	0	0	0	0
Government	90	90	90	90	90	90	90	90	90	90
Recycled	15	15	15	15	15	15	15	15	15	15
Other	7	7	7	7	7	7	7	7	7	7
Total	6,910	6,912	6,914	6,915	6,917	6,918	6,920	6,921	6,923	6,924

Customer Type	Demand 2021(ccf)	Demand 2022(ccf)	Demand 2023(ccf)	Demand 2024(ccf)	Demand 2025(ccf)	Demand 2026(ccf)	Demand 2027(ccf)	Demand 2028(ccf)	Demand 2029(ccf)	Demand 2030(ccf)
Residential	2,365,699	2,366,077	2,366,456	2,366,834	2,367,213	2,367,592	2,367,971	2,368,350	2,368,729	2,369,108
Multi- Residential	108,433	108,511	108,589	108,667	108,746	108,824	108,902	108,981	109,059	109,138
Commercial	1,143,273	1,144,096	1,144,920	1,145,744	1,146,569	1,147,395	1,148,221	1,149,047	1,149,875	1,150,703
Industrial	0	0	0	0	0	0	0	0	0	0
Government	155,414	155,526	155,638	155,750	155,862	155,974	156,087	156,199	156,311	156,424
Recycled	184,012	184,144	184,277	184,409	184,542	184,675	184,808	184,941	185,074	185,207
Other	6,828	6,833	6,838	6,842	6,847	6,852	6,857	6,862	6,867	6,872
Unaccounted	265,158	265,217	265,276	265,335	265,395	265,454	265,513	265,572	265,632	265,691
Total	4,228,816	4,230,404	4,231,993	4,233,583	4,235,174	4,236,766	4,238,359	4,239,952	4,241,547	4,243,142

Customer Type	Demand 2021(AF)	Demand 2022(AF)	Demand 2023(AF)	Demand 2024(AF)	Demand 2025(AF)	Demand 2026(AF)	Demand 2027(AF)	Demand 2028(AF)	Demand 2029(AF)	Demand 2030(AF)
Residential	5,431	5,432	5,433	5,434	5,434	5,435	5,436	5,437	5,438	5,439
Multi- Residential	249	249	249	249	250	250	250	250	250	251
Commercial	2,625	2,627	2,628	2,630	2,632	2,634	2,636	2,638	2,640	2,642
Industrial	0	0	0	0	0	0	0	0	0	0
Government	357	357	357	358	358	358	358	359	359	359
Recycled	422	423	423	423	424	424	424	425	425	425
Other	16	16	16	16	16	16	16	16	16	16
Unaccounted	609	609	609	609	609	609	610	610	610	610
Total	9,708	9,712	9,715	9,719	9,723	9,726	9,730	9,734	9,737	9,741

California Water Service Company - Westlake District
Water Supply and Demand Analysis and Projections

Worksheet 11

2030's Projections

Scenario #2: Based on Maintaining Growth at the 10-Year Average Annual Growth and 5-Year Average Annual Growth and Low Demand per Service for each Customer Class. Average High

Customer Type	Projected Services 2031	Projected Services 2032	Projected Services 2033	Projected Services 2034	Projected Services 2035	Projected Services 2036	Projected Services 2037	Projected Services 2038	Projected Services 2039	Projected Services 2040
Residential	6,143	6,144	6,145	6,146	6,147	6,147	6,148	6,149	6,150	6,151
Multi- Residential	127	127	127	127	127	127	128	128	128	128
Commercial	544	544	544	545	545	545	546	546	547	547
Industrial	0	0	0	0	0	0	0	0	0	0
Government	90	90	91	91	91	91	91	91	91	91
Recycled	15	15	15	15	15	15	15	15	15	15
Other	7	7	7	7	7	7	7	7	7	7
Total	6,926	6,927	6,929	6,931	6,932	6,934	6,935	6,937	6,938	6,940

Customer Type	Demand 2031(ccf)	Demand 2032(ccf)	Demand 2033(ccf)	Demand 2034(ccf)	Demand 2035(ccf)	Demand 2036(ccf)	Demand 2037(ccf)	Demand 2038(ccf)	Demand 2039(ccf)	Demand 2040(ccf)
Residential	2,369,487	2,369,866	2,370,245	2,370,624	2,371,003	2,371,383	2,371,762	2,372,142	2,372,521	2,372,901
Multi- Residential	109,216	109,295	109,374	109,452	109,531	109,610	109,689	109,768	109,847	109,926
Commercial	1,151,531	1,152,360	1,153,190	1,154,020	1,154,851	1,155,683	1,156,515	1,157,347	1,158,181	1,159,015
Industrial	0	0	0	0	0	0	0	0	0	0
Government	156,537	156,649	156,762	156,875	156,988	157,101	157,214	157,327	157,440	157,554
Recycled	185,341	185,474	185,608	185,741	185,875	186,009	186,143	186,277	186,411	186,545
Other	6,877	6,882	6,887	6,892	6,897	6,902	6,907	6,912	6,917	6,922
Unaccounted	265,750	265,810	265,869	265,928	265,988	266,047	266,107	266,166	266,226	266,285
Total	4,244,739	4,246,336	4,247,934	4,249,533	4,251,133	4,252,734	4,254,336	4,255,939	4,257,543	4,259,148

Customer Type	Demand 2031(AF)	Demand 2032(AF)	Demand 2033(AF)	Demand 2034(AF)	Demand 2035(AF)	Demand 2036(AF)	Demand 2037(AF)	Demand 2038(AF)	Demand 2039(AF)	Demand 2040(AF)
Residential	5,440	5,441	5,441	5,442	5,443	5,444	5,445	5,446	5,447	5,447
Multi- Residential	251	251	251	251	251	252	252	252	252	252
Commercial	2,644	2,645	2,647	2,649	2,651	2,653	2,655	2,657	2,659	2,661
Industrial	0	0	0	0	0	0	0	0	0	0
Government	359	360	360	360	360	361	361	361	361	362
Recycled	425	426	426	426	427	427	427	428	428	428
Other	16	16	16	16	16	16	16	16	16	16
Unaccounted	610	610	610	610	611	611	611	611	611	611
Total	9,745	9,748	9,752	9,756	9,759	9,763	9,767	9,770	9,774	9,778

California Water Service Company - Westlake District
Water Supply and Demand Analysis and Projections

Worksheet 12

Scenario #3: Based on Maintaining Growth at the 10-Year Average Annual Growth and Low Demand per Service for each Customer Class.
 5-Year Average High

Summary of Historical Growth Rate from Worksheet 2			
Customer Type	5 Yr. Avg. Historical Growth Rate	Individual Growth Rate Selected	Notes
Single Family Residential	0.016%	0.016%	Historical growth rate used
Multi Family Residential	4.170%	0.072%	Overall growth rate used
Commercial	-0.950%	0.072%	Overall growth rate used
Industrial	0.000%	0.000%	Zero growth rate expected
Government	0.462%	0.072%	Overall growth rate used
Recycled Water	0.000%	0.072%	Overall growth rate used
Other	3.000%	0.072%	Overall growth rate used
Overall	0.072%	0.023%	

Summary of Average Demand per Service from Worksheets 5 and 6										
Demand/Serv. Units	Residential	Multi-Residential		Commercial	Industrial	Government	Reclaimed	Total Other	Unaccounted Total Serv.	Combined Demand/Serv.
		(service)	(unit)							
Gal/Service/Yr	346,095	643,331	102,547	1,476,103	947,233	2,218,412	4,139,770	17,946,516	22,118	490,339
AF/Service/Yr	1.062	1.974	0.315	4.530	2.907	6.808	12.704	55.076	0.068	1.505
Gal/Service/Day	948	1,763	281	4,044	2,595	6,078	11,342	49,169	61	1,343

California Water Service Company - Westlake District
Water Supply and Demand Analysis and Projections

30-year projection Summary

Scenario #3: Based on Maintaining Growth at the 10-Year 5-Year Average Annual Growth and Low Average High Demand per Service for each Customer Class.

Customer Type	Projected Services 2010	Projected Services 2015	Projected Services 2020	Projected Services 2025	Projected Services 2030	Projected Services 2035	Projected Services 2040	Services projected to be added from 2010 - 2040
Single Family Residential	6,122	6,127	6,132	6,137	6,142	6,147	6,151	29
Multi Family Residential	125	126	126	126	127	127	128	3
Commercial	535	537	539	541	543	545	547	12
Industrial	0	0	0	0	0	0	0	0
Government	89	89	90	90	90	91	91	2
Recycled Water	15	15	15	15	15	15	15	0
Other	7	7	7	7	7	7	7	0
Total	6,894	6,901	6,909	6,917	6,924	6,932	6,940	46

Customer Type	Projected Demand 2010 (ccf)	Projected Demand 2015 (ccf)	Projected Demand 2020 (ccf)	Projected Demand 2025 (ccf)	Projected Demand 2030 (ccf)	Projected Demand 2035 (ccf)	Projected Demand 2040 (ccf)	Projected demand to be added from 2010 - 2040 (ccf)
Single Family Residential	2,832,393	2,834,660	2,836,928	2,839,198	2,841,470	2,843,744	2,846,020	13,627
Multi Family Residential	107,578	107,966	108,355	108,746	109,138	109,531	109,926	2,348
Commercial	1,056,451	1,060,260	1,064,082	1,067,918	1,071,769	1,075,632	1,079,510	23,059
Industrial	0	0	0	0	0	0	0	0
Government	264,126	265,078	266,034	266,993	267,956	268,922	269,891	5,765
Recycled Water	360,123	361,421	362,724	364,032	365,344	366,661	367,983	7,860
Other	38,766	38,906	39,046	39,187	39,328	39,470	39,612	846
Unaccounted	203,823	204,050	204,278	204,506	204,734	204,963	205,192	1,369
Total	4,863,260	4,872,341	4,881,447	4,890,580	4,899,739	4,908,924	4,918,135	54,875

Customer Type	Projected Demand 2010 (AF)	Projected Demand 2015 (AF)	Projected Demand 2020 (AF)	Projected Demand 2025 (AF)	Projected Demand 2030 (AF)	Projected Demand 2035 (AF)	Projected Demand 2040 (AF)	Projected demand to be added from 2010 - 2040 (AF)
Single Family Residential	6,502	6,508	6,513	6,518	6,523	6,528	6,534	31
Multi Family Residential	247	248	249	250	251	251	252	5
Commercial	2,425	2,434	2,443	2,452	2,460	2,469	2,478	53
Industrial	0	0	0	0	0	0	0	0
Government	606	609	611	613	615	617	620	13
Recycled Water	827	830	833	836	839	842	845	18
Other	89	89	90	90	90	91	91	2
Unaccounted	468	468	469	469	470	471	471	3
Total	11,165	11,185	11,206	11,227	11,248	11,269	11,291	126

California Water Service Company - Westlake District
Water Supply and Demand Analysis and Projections

Worksheet 12

2000's Projections

Scenario #3: Based on Maintaining Growth at the

- 10-Year
 5-Year

Average Annual Growth and

- Low
 Average
 High

Demand per Service for each Customer Class.

Customer Type	Actual Services 2001	Actual Services 2002	Actual Services 2003	Actual Services 2004	Actual Services 2005	Actual Services 2006	Actual Services 2007	Actual Services 2008	Actual Services 2009	Projected Services 2010
Residential	6,079	6,090	6,031	6,117	6,134	6,147	6,149	6,142	6,121	6,122
Multi- Residential	65	65	64	65	65	65	65	120	125	125
Commercial	565	561	548	562	573	580	549	542	535	535
Industrial	14	14	15	15	15	15	15	0	0	0
Government	88	87	86	87	87	87	88	90	89	89
Recycled	14	14	15	15	15	15	15	15	15	15
Other	8	10	8	7	6	8	10	9	7	7
Total	6,833	6,841	6,767	6,867	6,895	6,917	6,891	6,918	6,892	6,894

Customer Type	Demand 2001(ccf)	Demand 2002(ccf)	Demand 2003(ccf)	Demand 2004(ccf)	Demand 2005(ccf)	Demand 2006(ccf)	Demand 2007(ccf)	Demand 2008(ccf)	Demand 2009(ccf)	Demand 2010(ccf)
Residential	2,812,624	2,817,675	2,790,339	2,829,858	2,838,070	2,843,969	2,844,894	2,841,656	2,831,940	2,832,393
Multi- Residential	154,315	154,315	151,941	154,315	154,315	154,315	154,315	103,201	107,501	107,578
Commercial	1,114,066	1,106,502	1,081,343	1,109,133	1,130,675	1,144,487	1,083,317	1,069,504	1,055,691	1,056,451
Industrial	17,728	17,728	18,994	18,994	18,994	18,994	18,994	0	0	0
Government	260,229	258,993	256,028	258,005	258,005	258,005	260,970	266,902	263,936	264,126
Recycled	335,873	339,871	359,864	359,864	359,864	359,864	359,864	359,864	359,864	360,123
Other	44,272	52,573	42,889	37,355	33,204	44,272	55,340	49,806	38,738	38,766
Unaccounted	202,021	202,267	200,087	203,048	203,874	204,517	203,748	204,547	203,778	203,823
Total	4,941,128	4,949,925	4,901,485	4,970,572	4,997,001	5,028,424	4,981,443	4,895,478	4,861,447	4,863,260

Customer Type	Demand 2001(AF)	Demand 2002(AF)	Demand 2003(AF)	Demand 2004(AF)	Demand 2005(AF)	Demand 2006(AF)	Demand 2007(AF)	Demand 2008(AF)	Demand 2009(AF)	Demand 2010(AF)
Residential	6,457	6,469	6,406	6,497	6,515	6,529	6,531	6,524	6,501	6,502
Multi- Residential	354	354	349	354	354	354	354	237	247	247
Commercial	2,558	2,540	2,482	2,546	2,596	2,627	2,487	2,455	2,424	2,425
Industrial	41	41	44	44	44	44	44	0	0	0
Government	597	595	588	592	592	592	599	613	606	606
Recycled	771	780	826	826	826	826	826	826	826	827
Other	102	121	98	86	76	102	127	114	89	89
Unaccounted	464	464	459	466	468	470	468	470	468	468
Total	11,343	11,364	11,252	11,411	11,472	11,544	11,436	11,239	11,160	11,165

California Water Service Company - Westlake District
Water Supply and Demand Analysis and Projections

Worksheet 12

2010's Projections

Scenario #3: Based on Maintaining Growth at the 10-Year Average Annual Growth and Low Demand per Service for each Customer Class.
 5-Year Average High

Customer Type	Projected Services 2011	Projected Services 2012	Projected Services 2013	Projected Services 2014	Projected Services 2015	Projected Services 2016	Projected Services 2017	Projected Services 2018	Projected Services 2019	Projected Services 2020
Residential	6,123	6,124	6,125	6,126	6,127	6,128	6,129	6,130	6,131	6,132
Multi- Residential	125	125	125	125	126	126	126	126	126	126
Commercial	536	536	537	537	537	538	538	538	539	539
Industrial	0	0	0	0	0	0	0	0	0	0
Government	89	89	89	89	89	89	90	90	90	90
Recycled	15	15	15	15	15	15	15	15	15	15
Other	7	7	7	7	7	7	7	7	7	7
Total	6,895	6,897	6,898	6,900	6,901	6,903	6,904	6,906	6,907	6,909

Customer Type	Demand 2011(ccf)	Demand 2012(ccf)	Demand 2013(ccf)	Demand 2014(ccf)	Demand 2015(ccf)	Demand 2016(ccf)	Demand 2017(ccf)	Demand 2018(ccf)	Demand 2019(ccf)	Demand 2020(ccf)
Residential	2,832,846	2,833,299	2,833,753	2,834,206	2,834,660	2,835,113	2,835,567	2,836,021	2,836,474	2,836,928
Multi- Residential	107,655	107,733	107,811	107,888	107,966	108,044	108,121	108,199	108,277	108,355
Commercial	1,057,212	1,057,973	1,058,735	1,059,497	1,060,260	1,061,023	1,061,787	1,062,552	1,063,317	1,064,082
Industrial	0	0	0	0	0	0	0	0	0	0
Government	264,316	264,506	264,697	264,888	265,078	265,269	265,460	265,651	265,842	266,034
Recycled	360,382	360,641	360,901	361,161	361,421	361,681	361,942	362,202	362,463	362,724
Other	38,794	38,822	38,850	38,878	38,906	38,934	38,962	38,990	39,018	39,046
Unaccounted	203,869	203,914	203,959	204,005	204,050	204,096	204,141	204,187	204,232	204,278
Total	4,865,074	4,866,889	4,868,705	4,870,523	4,872,341	4,874,160	4,875,980	4,877,802	4,879,624	4,881,447

Customer Type	Demand 2011(AF)	Demand 2012(AF)	Demand 2013(AF)	Demand 2014(AF)	Demand 2015(AF)	Demand 2016(AF)	Demand 2017(AF)	Demand 2018(AF)	Demand 2019(AF)	Demand 2020(AF)
Residential	6,503	6,504	6,505	6,506	6,508	6,509	6,510	6,511	6,512	6,513
Multi- Residential	247	247	248	248	248	248	248	248	249	249
Commercial	2,427	2,429	2,431	2,432	2,434	2,436	2,438	2,439	2,441	2,443
Industrial	0	0	0	0	0	0	0	0	0	0
Government	607	607	608	608	609	609	609	610	610	611
Recycled	827	828	829	829	830	830	831	832	832	833
Other	89	89	89	89	89	89	89	90	90	90
Unaccounted	468	468	468	468	468	469	469	469	469	469
Total	11,169	11,173	11,177	11,181	11,185	11,190	11,194	11,198	11,202	11,206

California Water Service Company - Westlake District
Water Supply and Demand Analysis and Projections

Worksheet 12

2020's Projections

Scenario #3: Based on Maintaining Growth at the

10-Year Average Annual Growth and
 5-Year

Low
 Average Demand per Service for each Customer Class.
 High

Customer Type	Projected Services 2021	Projected Services 2022	Projected Services 2023	Projected Services 2024	Projected Services 2025	Projected Services 2026	Projected Services 2027	Projected Services 2028	Projected Services 2029	Projected Services 2030
Residential	6,133	6,134	6,135	6,136	6,137	6,138	6,139	6,140	6,141	6,142
Multi- Residential	126	126	126	126	126	127	127	127	127	127
Commercial	540	540	540	541	541	542	542	542	543	543
Industrial	0	0	0	0	0	0	0	0	0	0
Government	90	90	90	90	90	90	90	90	90	90
Recycled	15	15	15	15	15	15	15	15	15	15
Other	7	7	7	7	7	7	7	7	7	7
Total	6,910	6,912	6,914	6,915	6,917	6,918	6,920	6,921	6,923	6,924

Customer Type	Demand 2021(ccf)	Demand 2022(ccf)	Demand 2023(ccf)	Demand 2024(ccf)	Demand 2025(ccf)	Demand 2026(ccf)	Demand 2027(ccf)	Demand 2028(ccf)	Demand 2029(ccf)	Demand 2030(ccf)
Residential	2,837,382	2,837,836	2,838,290	2,838,744	2,839,198	2,839,653	2,840,107	2,840,561	2,841,016	2,841,470
Multi- Residential	108,433	108,511	108,589	108,667	108,746	108,824	108,902	108,981	109,059	109,138
Commercial	1,064,848	1,065,615	1,066,382	1,067,150	1,067,918	1,068,687	1,069,457	1,070,227	1,070,997	1,071,769
Industrial	0	0	0	0	0	0	0	0	0	0
Government	266,225	266,417	266,609	266,801	266,993	267,185	267,378	267,570	267,763	267,956
Recycled	362,985	363,246	363,508	363,770	364,032	364,294	364,556	364,818	365,081	365,344
Other	39,074	39,102	39,131	39,159	39,187	39,215	39,243	39,272	39,300	39,328
Unaccounted	204,323	204,369	204,414	204,460	204,506	204,551	204,597	204,643	204,688	204,734
Total	4,883,272	4,885,097	4,886,924	4,888,751	4,890,580	4,892,410	4,894,240	4,896,072	4,897,905	4,899,739

Customer Type	Demand 2021(AF)	Demand 2022(AF)	Demand 2023(AF)	Demand 2024(AF)	Demand 2025(AF)	Demand 2026(AF)	Demand 2027(AF)	Demand 2028(AF)	Demand 2029(AF)	Demand 2030(AF)
Residential	6,514	6,515	6,516	6,517	6,518	6,519	6,520	6,521	6,522	6,523
Multi- Residential	249	249	249	249	250	250	250	250	250	251
Commercial	2,445	2,446	2,448	2,450	2,452	2,453	2,455	2,457	2,459	2,460
Industrial	0	0	0	0	0	0	0	0	0	0
Government	611	612	612	612	613	613	614	614	615	615
Recycled	833	834	835	835	836	836	837	838	838	839
Other	90	90	90	90	90	90	90	90	90	90
Unaccounted	469	469	469	469	469	470	470	470	470	470
Total	11,211	11,215	11,219	11,223	11,227	11,232	11,236	11,240	11,244	11,248

California Water Service Company - Westlake District
Water Supply and Demand Analysis and Projections

Worksheet 12

2030's Projections

Scenario #3: Based on Maintaining Growth at the

- 10-Year
 5-Year

Average Annual Growth and

- Low
 Average
 High

Demand per Service for each Customer Class.

Customer Type	Projected Services 2031	Projected Services 2032	Projected Services 2033	Projected Services 2034	Projected Services 2035	Projected Services 2036	Projected Services 2037	Projected Services 2038	Projected Services 2039	Projected Services 2040
Residential	6,143	6,144	6,145	6,146	6,147	6,147	6,148	6,149	6,150	6,151
Multi- Residential	127	127	127	127	127	127	128	128	128	128
Commercial	544	544	544	545	545	545	546	546	547	547
Industrial	0	0	0	0	0	0	0	0	0	0
Government	90	90	91	91	91	91	91	91	91	91
Recycled	15	15	15	15	15	15	15	15	15	15
Other	7	7	7	7	7	7	7	7	7	7
Total	6,926	6,927	6,929	6,931	6,932	6,934	6,935	6,937	6,938	6,940

Customer Type	Demand 2031(ccf)	Demand 2032(ccf)	Demand 2033(ccf)	Demand 2034(ccf)	Demand 2035(ccf)	Demand 2036(ccf)	Demand 2037(ccf)	Demand 2038(ccf)	Demand 2039(ccf)	Demand 2040(ccf)
Residential	2,841,925	2,842,380	2,842,835	2,843,289	2,843,744	2,844,199	2,844,654	2,845,110	2,845,565	2,846,020
Multi- Residential	109,216	109,295	109,374	109,452	109,531	109,610	109,689	109,768	109,847	109,926
Commercial	1,072,540	1,073,312	1,074,085	1,074,859	1,075,632	1,076,407	1,077,182	1,077,957	1,078,734	1,079,510
Industrial	0	0	0	0	0	0	0	0	0	0
Government	268,148	268,342	268,535	268,728	268,922	269,115	269,309	269,503	269,697	269,891
Recycled	365,607	365,870	366,134	366,397	366,661	366,925	367,189	367,454	367,718	367,983
Other	39,357	39,385	39,413	39,442	39,470	39,498	39,527	39,555	39,584	39,612
Unaccounted	204,780	204,825	204,871	204,917	204,963	205,009	205,054	205,100	205,146	205,192
Total	4,901,574	4,903,409	4,905,246	4,907,085	4,908,924	4,910,764	4,912,605	4,914,447	4,916,291	4,918,135

Customer Type	Demand 2031(AF)	Demand 2032(AF)	Demand 2033(AF)	Demand 2034(AF)	Demand 2035(AF)	Demand 2036(AF)	Demand 2037(AF)	Demand 2038(AF)	Demand 2039(AF)	Demand 2040(AF)
Residential	6,524	6,525	6,526	6,527	6,528	6,529	6,530	6,532	6,533	6,534
Multi- Residential	251	251	251	251	251	252	252	252	252	252
Commercial	2,462	2,464	2,466	2,468	2,469	2,471	2,473	2,475	2,476	2,478
Industrial	0	0	0	0	0	0	0	0	0	0
Government	616	616	616	617	617	618	618	619	619	620
Recycled	839	840	841	841	842	842	843	844	844	845
Other	90	90	90	91	91	91	91	91	91	91
Unaccounted	470	470	470	470	471	471	471	471	471	471
Total	11,253	11,257	11,261	11,265	11,269	11,274	11,278	11,282	11,286	11,291

California Water Service Company - Westlake District
Water Supply and Demand Analysis and Projections

Scenario #4: Based on Maintaining Growth at the 10-Year 5-Year Average Annual Growth

Summary of Historical Growth Rate from Worksheet 2			
Customer Type	10 Yr. Avg. Historical Growth Rate	Individual Growth Rate Selected	Notes
Single Family Residential	-0.094%	0.163%	Overall growth rate used
Multi Family Residential	4.170%	0.163%	Overall growth rate used
Commercial	2.729%	0.163%	Overall growth rate used
Industrial	0.000%	0.000%	Zero growth expected
Government	0.963%	0.163%	Overall growth rate used
Recycled Water	1.516%	0.163%	Overall growth rate used
Other	-0.868%	0.163%	Overall growth rate used
Overall	0.163%	0.169%	

California Water Service Company - Westlake District
Water Supply and Demand Analysis and Projections

30-year projection Summary

Scenario #4: Based on Maintaining Growth at the 10-Year Average Annual Growth
 5-Year

Customer Type	Projected Services 2010	Projected Services 2015	Projected Services 2020	Projected Services 2025	Projected Services 2030	Projected Services 2035	Projected Services 2040	Services projected to be added from 2010 - 2040
Single Family Residential	6,131	6,181	6,232	6,283	6,334	6,386	6,438	307
Multi Family Residential	125	126	127	128	129	130	131	6
Commercial	536	540	545	549	554	558	563	27
Industrial	0	0	0	0	0	0	0	0
Government	89	90	91	91	92	93	94	4
Recycled Water	15	15	15	15	16	16	16	1
Other	7	7	7	7	7	7	7	0
Total	6,903	6,960	7,017	7,074	7,132	7,190	7,249	346

California Water Service Company - Westlake District
Water Supply and Demand Analysis and Projections

2000's Projections

Scenario #4: Based on Maintaining Growth at the 10-Year Average Annual Growth
 5-Year

Customer Type	Actual Services 2001	Actual Services 2002	Actual Services 2003	Actual Services 2004	Actual Services 2005	Actual Services 2006	Actual Services 2007	Actual Services 2008	Actual Services 2009	Projected Services 2010
Residential	6,079	6,090	6,031	6,117	6,134	6,147	6,149	6,142	6,121	6,131
Multi- Residential	65	65	64	65	65	65	65	120	125	125
Commercial	565	561	548	562	573	580	549	542	535	536
Industrial	14	14	15	15	15	15	15	0	0	0
Government	88	87	86	87	87	87	88	90	89	89
Recycled	14	14	15	15	15	15	15	15	15	15
Other	8	10	8	7	6	8	10	9	7	7
Total	6,833	6,841	6,767	6,867	6,895	6,917	6,891	6,918	6,892	6,903

2010's Projections

Customer Type	Projected Services 2011	Projected Services 2012	Projected Services 2013	Projected Services 2014	Projected Services 2015	Projected Services 2016	Projected Services 2017	Projected Services 2018	Projected Services 2019	Projected Services 2020
Residential	6,141	6,151	6,161	6,171	6,181	6,191	6,201	6,211	6,222	6,232
Multi- Residential	125	126	126	126	126	126	127	127	127	127
Commercial	537	538	538	539	540	541	542	543	544	545
Industrial	0	0	0	0	0	0	0	0	0	0
Government	89	89	90	90	90	90	90	90	90	91
Recycled	15	15	15	15	15	15	15	15	15	15
Other	7	7	7	7	7	7	7	7	7	7
Total	6,914	6,926	6,937	6,948	6,960	6,971	6,982	6,994	7,005	7,017

California Water Service Company - Westlake District
Water Supply and Demand Analysis and Projections

2020's Projections

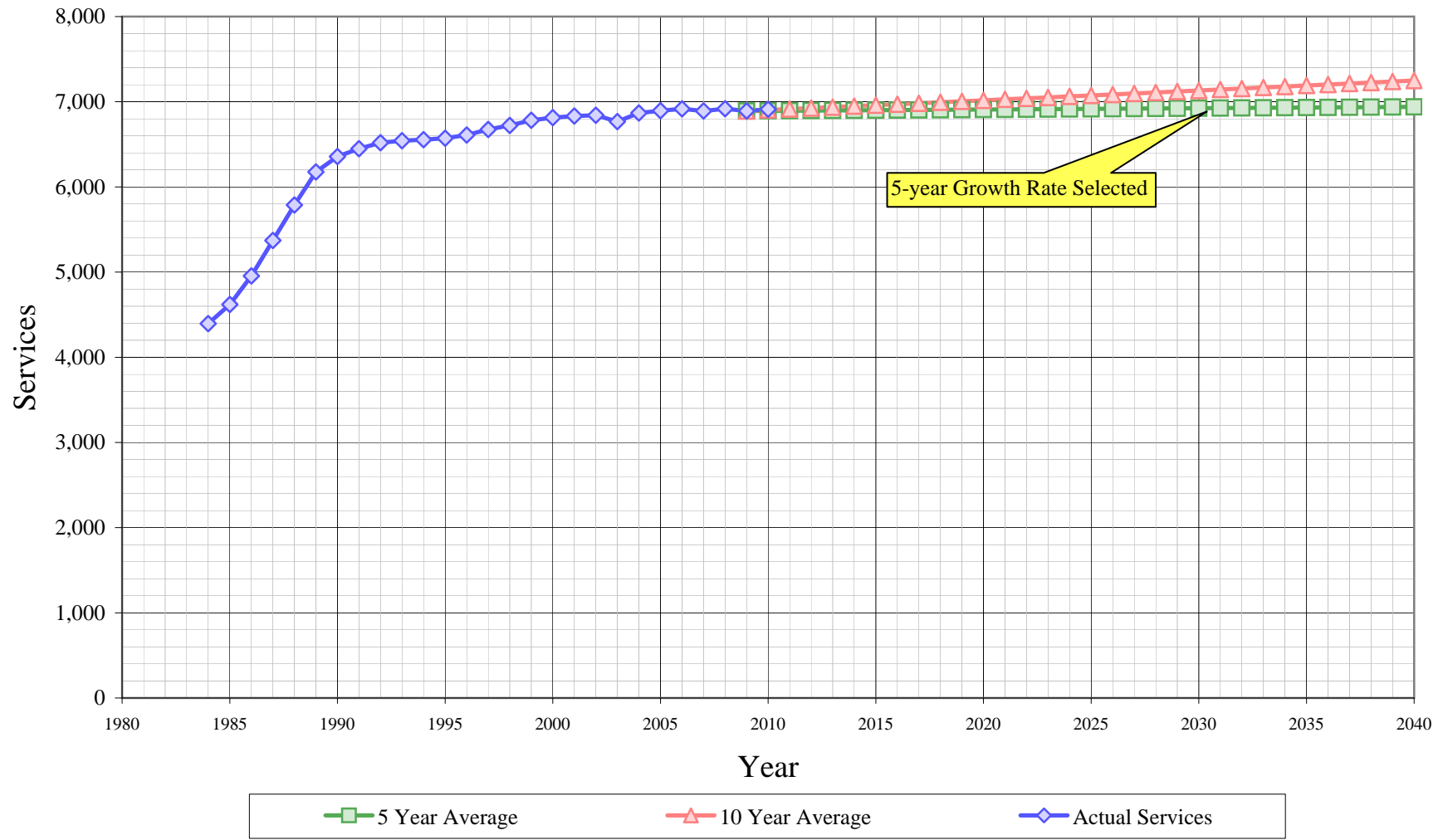
Scenario #4: Based on Maintaining Growth at the 10-Year Average Annual Growth
 5-Year

Customer Type	Projected Services 2021	Projected Services 2022	Projected Services 2023	Projected Services 2024	Projected Services 2025	Projected Services 2026	Projected Services 2027	Projected Services 2028	Projected Services 2029	Projected Services 2030
Residential	6,242	6,252	6,262	6,272	6,283	6,293	6,303	6,313	6,324	6,334
Multi- Residential	127	128	128	128	128	129	129	129	129	129
Commercial	546	546	547	548	549	550	551	552	553	554
Industrial	0	0	0	0	0	0	0	0	0	0
Government	91	91	91	91	91	91	92	92	92	92
Recycled	15	15	15	15	15	15	15	15	15	16
Other	7	7	7	7	7	7	7	7	7	7
Total	7,028	7,039	7,051	7,062	7,074	7,085	7,097	7,109	7,120	7,132

2030's Projections

Customer Type	Projected Services 2031	Projected Services 2032	Projected Services 2033	Projected Services 2034	Projected Services 2035	Projected Services 2036	Projected Services 2037	Projected Services 2038	Projected Services 2039	Projected Services 2040
Residential	6,344	6,355	6,365	6,375	6,386	6,396	6,407	6,417	6,428	6,438
Multi- Residential	130	130	130	130	130	131	131	131	131	131
Commercial	555	555	556	557	558	559	560	561	562	563
Industrial	0	0	0	0	0	0	0	0	0	0
Government	92	92	93	93	93	93	93	93	93	94
Recycled	16	16	16	16	16	16	16	16	16	16
Other	7	7	7	7	7	7	7	7	7	7
Total	7,143	7,155	7,167	7,178	7,190	7,202	7,214	7,225	7,237	7,249

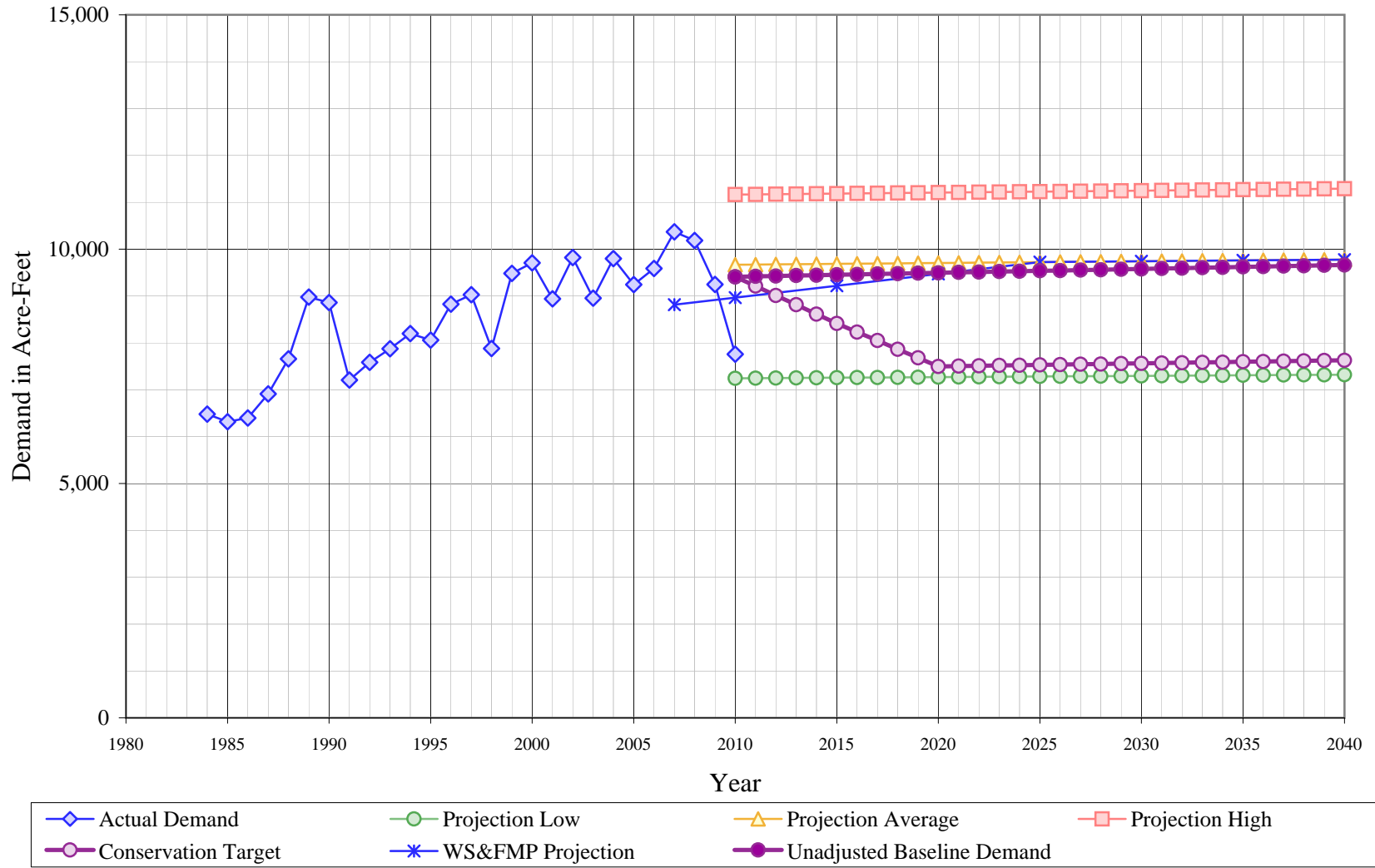
Westlake District Historical & Projected Services



California Water Service Company - Westlake District
Water Supply and Demand Analysis and Projections
Projected Annual Average Services

Year	Actual Services	Projected Services		Year	Actual Services	Projected Services	
		5 Year Average	10 Year Average			5 Year Average	10 Year Average
1980							
1981				2011		6,895	6,914
1982				2012		6,897	6,926
1983				2013		6,898	6,937
1984	4,395			2014		6,900	6,948
1985	4,620			2015		6,901	6,960
1986	4,955			2016		6,903	6,971
1987	5,371			2017		6,904	6,982
1988	5,787			2018		6,906	6,994
1989	6,176			2019		6,907	7,005
1990	6,356			2020		6,909	7,017
1991	6,449			2021		6,910	7,028
1992	6,519			2022		6,912	7,039
1993	6,542			2023		6,914	7,051
1994	6,555			2024		6,915	7,062
1995	6,572			2025		6,917	7,074
1996	6,609			2026		6,918	7,085
1997	6,675			2027		6,920	7,097
1998	6,722			2028		6,921	7,109
1999	6,782			2029		6,923	7,120
2000	6,813			2030		6,924	7,132
2001	6,833			2031		6,926	7,143
2002	6,841			2032		6,927	7,155
2003	6,767			2033		6,929	7,167
2004	6,867			2034		6,931	7,178
2005	6,895			2035		6,932	7,190
2006	6,917			2036		6,934	7,202
2007	6,891			2037		6,935	7,214
2008	6,918			2038		6,937	7,225
2009	6,892	6,892	6,892	2039		6,938	7,237
2010	6,911	6,894	6,903	2040		6,940	7,249

Westlake District Historical & Projected Demand



California Water Service Company - Westlake District

Water Supply and Demand Analysis and Projections

Projected Demand in Acre-Feet

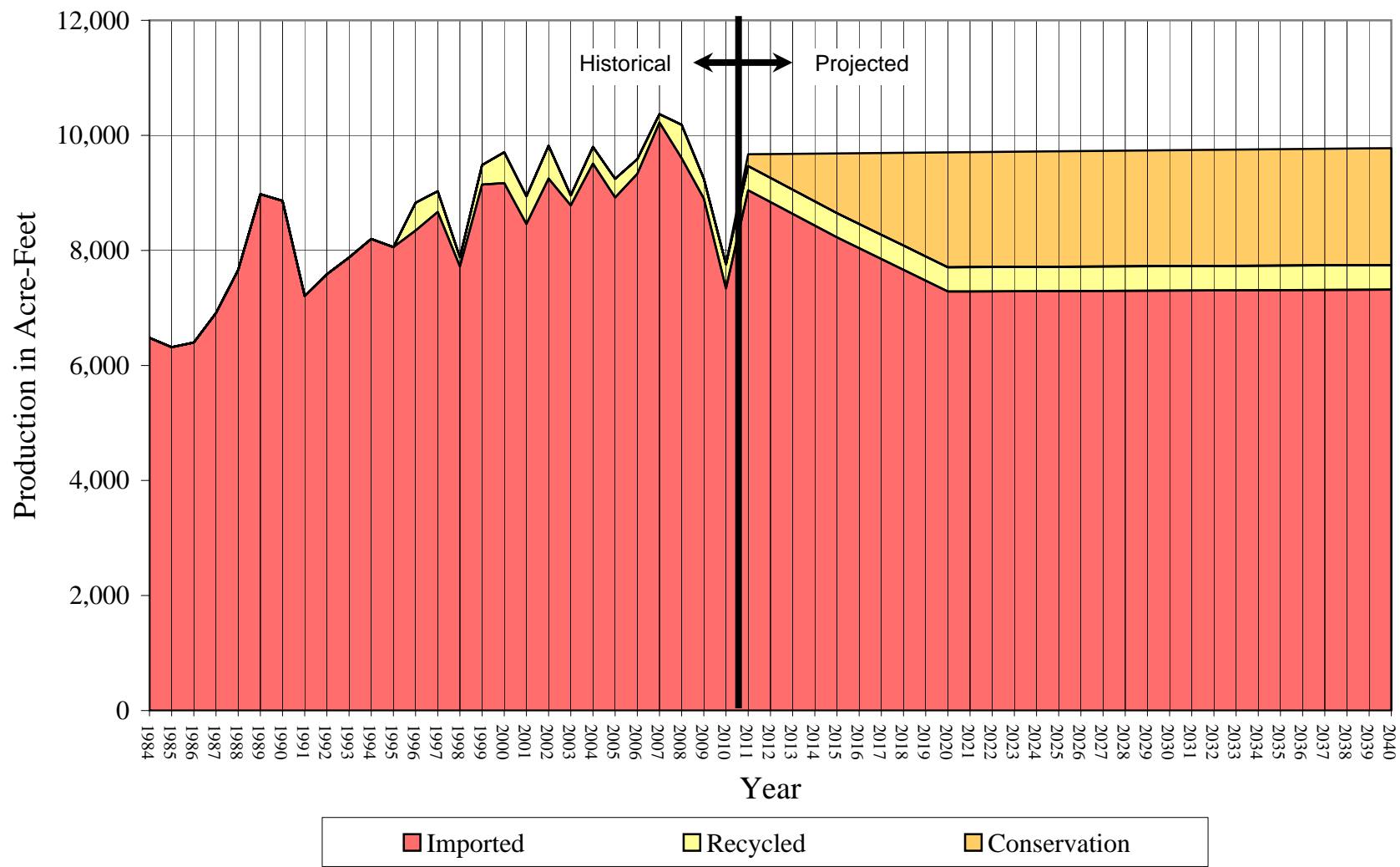
Service Growth Rate based on the Five Year Average Growth

Year	Actual Demand	Projection			Unadjusted Baseline Demand	Target Demand
		Low	Average	High		
1984	6,479					
1985	6,318					
1986	6,398					
1987	6,912					
1988	7,660					
1989	8,977					
1990	8,862					
1991	7,207					
1992	7,586					
1993	7,875					
1994	8,200					
1995	8,058					
1996	8,828					
1997	9,028					
1998	7,881					
1999	9,484					
2000	9,708					
2001	8,940					
2002	9,822					
2003	8,956					
2004	9,799					
2005	9,245					
2006	9,587					
2007	10,369					
2008	10,184					
2009	9,246					
2010	7,758	7,245	9,668	11,165	9,410	9,410
2011		7,247	9,672	11,169	9,421	9,214

Year	Actual Demand	Projection			Unadjusted Baseline Demand	Target Demand
		Low	Average	High		
2013		7,252	9,679	11,177	9,438	8,816
2014		7,255	9,683	11,181	9,444	8,614
2015		7,258	9,686	11,185	9,455	8,416
2016		7,260	9,690	11,190	9,460	8,231
2017		7,263	9,694	11,194	9,472	8,050
2018		7,265	9,697	11,198	9,477	7,865
2019		7,268	9,701	11,202	9,488	7,683
2020		7,270	9,704	11,206	9,494	7,497
2021		7,273	9,708	11,211	9,505	7,506
2022		7,276	9,712	11,215	9,511	7,510
2023		7,278	9,715	11,219	9,522	7,519
2024		7,281	9,719	11,223	9,527	7,523
2025		7,283	9,723	11,227	9,538	7,532
2026		7,286	9,726	11,232	9,544	7,537
2027		7,288	9,730	11,236	9,555	7,545
2028		7,291	9,734	11,240	9,561	7,550
2029		7,294	9,737	11,244	9,572	7,559
2030		7,296	9,741	11,248	9,577	7,563
2031		7,299	9,745	11,253	9,589	7,572
2032		7,301	9,748	11,257	9,594	7,576
2033		7,304	9,752	11,261	9,605	7,585
2034		7,306	9,756	11,265	9,611	7,589
2035		7,309	9,759	11,269	9,622	7,598
2036		7,312	9,763	11,274	9,628	7,603
2037		7,314	9,767	11,278	9,639	7,611
2038		7,317	9,770	11,282	9,644	7,616
2039		7,319	9,774	11,286	9,655	7,625
2040		7,322	9,778	11,291	9,661	7,629

Westlake District

Historical and Projected Distribution of Demand by Source



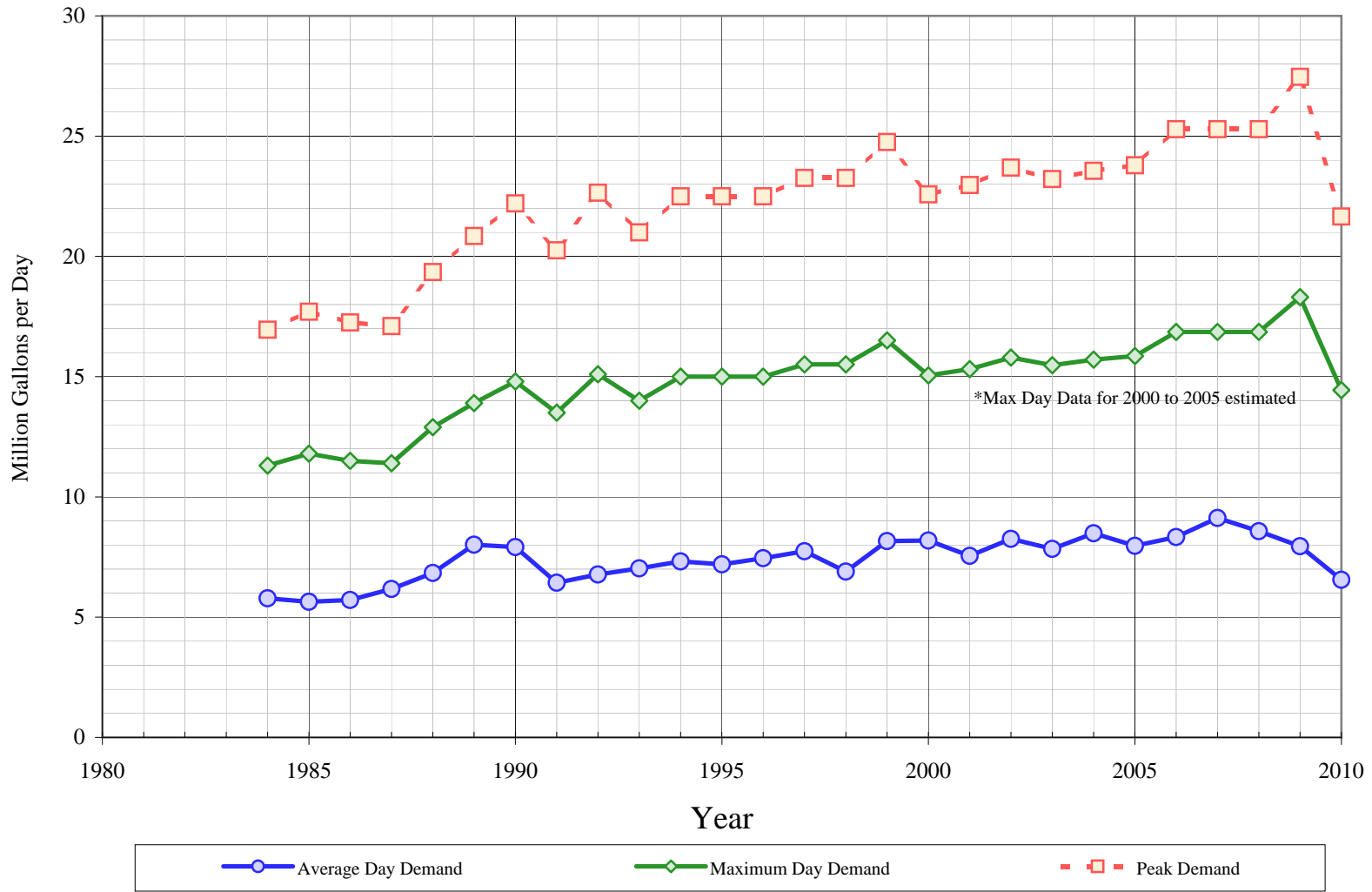
California Water Service Company - Westlake District
Water Supply and Demand Analysis and Projections
Historical and Projected Distribution of Demand by Source

Year	Purchased Imported Water		Purchased Recycled Water		Conservation		Total	
	kGal	AFY	kGal	AFY	kGal	AFY	kGal	AFY
1984	2,111,232	6,479			0	0	2,111,232	6,479
1985	2,058,575	6,318			0	0	2,058,575	6,318
1986	2,084,752	6,398			0	0	2,084,752	6,398
1987	2,252,163	6,912			0	0	2,252,163	6,912
1988	2,495,936	7,660			0	0	2,495,936	7,660
1989	2,925,315	8,977			0	0	2,925,315	8,977
1990	2,887,723	8,862			0	0	2,887,723	8,862
1991	2,348,489	7,207			0	0	2,348,489	7,207
1992	2,471,968	7,586			0	0	2,471,968	7,586
1993	2,566,081	7,875			0	0	2,566,081	7,875
1994	2,671,835	8,200			0	0	2,671,835	8,200
1995	2,625,857	8,058	10	0	0	0	2,625,867	8,058
1996	2,719,307	8,345	157,283	483	0	0	2,876,590	8,828
1997	2,824,339	8,668	117,477	361	0	0	2,941,816	9,028
1998	2,516,405	7,723	51,620	158	0	0	2,568,025	7,881
1999	2,980,125	9,146	110,169	338	0	0	3,090,294	9,484
2000	2,988,081	9,170	175,187	538	0	0	3,163,268	9,708
2001	2,756,335	8,459	156,713	481	0	0	2,913,048	8,940
2002	3,013,495	9,248	186,899	574	0	0	3,200,394	9,822
2003	2,861,674	8,782	56,583	174	0	0	2,918,257	8,956
2004	3,098,536	9,509	94,386	290	0	0	3,192,922	9,799
2005	2,906,660	8,920	105,865	325	0	0	3,012,525	9,245
2006	3,039,987	9,329	83,890	257	0	0	3,123,877	9,587
2007	3,331,204	10,223	47,720	146	0	0	3,378,924	10,369
2008	3,128,816	9,602	189,749	582	0	0	3,318,565	10,184
2009	2,901,367	8,904	111,514	342	0	0	3,012,881	9,246
2010	2,391,539	7,339	137,967	419	0	0	2,529,505	7,758
2011	2,947,426	9,045	136,664	419	67,463	207	3,151,553	9,672
2012	2,880,967	8,841	136,762	420	135,005	414	3,152,734	9,675
2013	2,814,308	8,637	136,861	420	202,747	622	3,153,916	9,679

Year	Purchased Imported Water		Purchased Recycled Water		Conservation		Total	
	kGal	AFY	kGal	AFY	kGal	AFY	kGal	AFY
2014	2,747,650	8,432	136,959	420	270,490	830	3,155,099	9,683
2015	2,680,713	8,227	137,058	421	338,511	1,039	3,156,282	9,686
2016	2,619,658	8,039	137,157	421	400,651	1,230	3,157,466	9,690
2017	2,558,258	7,851	137,255	421	463,137	1,421	3,158,651	9,694
2018	2,497,022	7,663	137,354	422	525,460	1,613	3,159,836	9,697
2019	2,435,368	7,474	137,453	422	588,201	1,805	3,161,022	9,701
2020	2,373,950	7,285	137,552	422	650,706	1,997	3,162,209	9,704
2021	2,374,274	7,286	137,651	422	651,470	1,999	3,163,396	9,708
2022	2,374,981	7,289	137,750	423	651,853	2,000	3,164,584	9,712
2023	2,375,307	7,290	137,849	423	652,617	2,003	3,165,773	9,715
2024	2,376,015	7,292	137,949	423	652,999	2,004	3,166,962	9,719
2025	2,376,341	7,293	138,048	424	653,763	2,006	3,168,152	9,723
2026	2,377,051	7,295	138,147	424	654,145	2,007	3,169,343	9,726
2027	2,377,378	7,296	138,247	424	654,909	2,010	3,170,535	9,730
2028	2,378,089	7,298	138,346	425	655,291	2,011	3,171,727	9,734
2029	2,378,418	7,299	138,446	425	656,056	2,013	3,172,920	9,737
2030	2,379,130	7,301	138,546	425	656,438	2,015	3,174,113	9,741
2031	2,379,460	7,302	138,646	425	657,202	2,017	3,175,307	9,745
2032	2,380,173	7,304	138,745	426	657,584	2,018	3,176,502	9,748
2033	2,380,504	7,305	138,845	426	658,348	2,020	3,177,698	9,752
2034	2,381,219	7,308	138,945	426	658,730	2,022	3,178,894	9,756
2035	2,381,551	7,309	139,045	427	659,494	2,024	3,180,091	9,759
2036	2,382,267	7,311	139,145	427	659,877	2,025	3,181,289	9,763
2037	2,382,601	7,312	139,246	427	660,641	2,027	3,182,487	9,767
2038	2,383,317	7,314	139,346	428	661,023	2,029	3,183,686	9,770
2039	2,383,652	7,315	139,446	428	661,787	2,031	3,184,886	9,774
2040	2,384,370	7,317	139,547	428	662,169	2,032	3,186,086	9,778

Westlake District

Average Day, Maximum Day, and Peak Demand



California Water Service Company - Westlake District

Water Supply and Demand Analysis and Projections

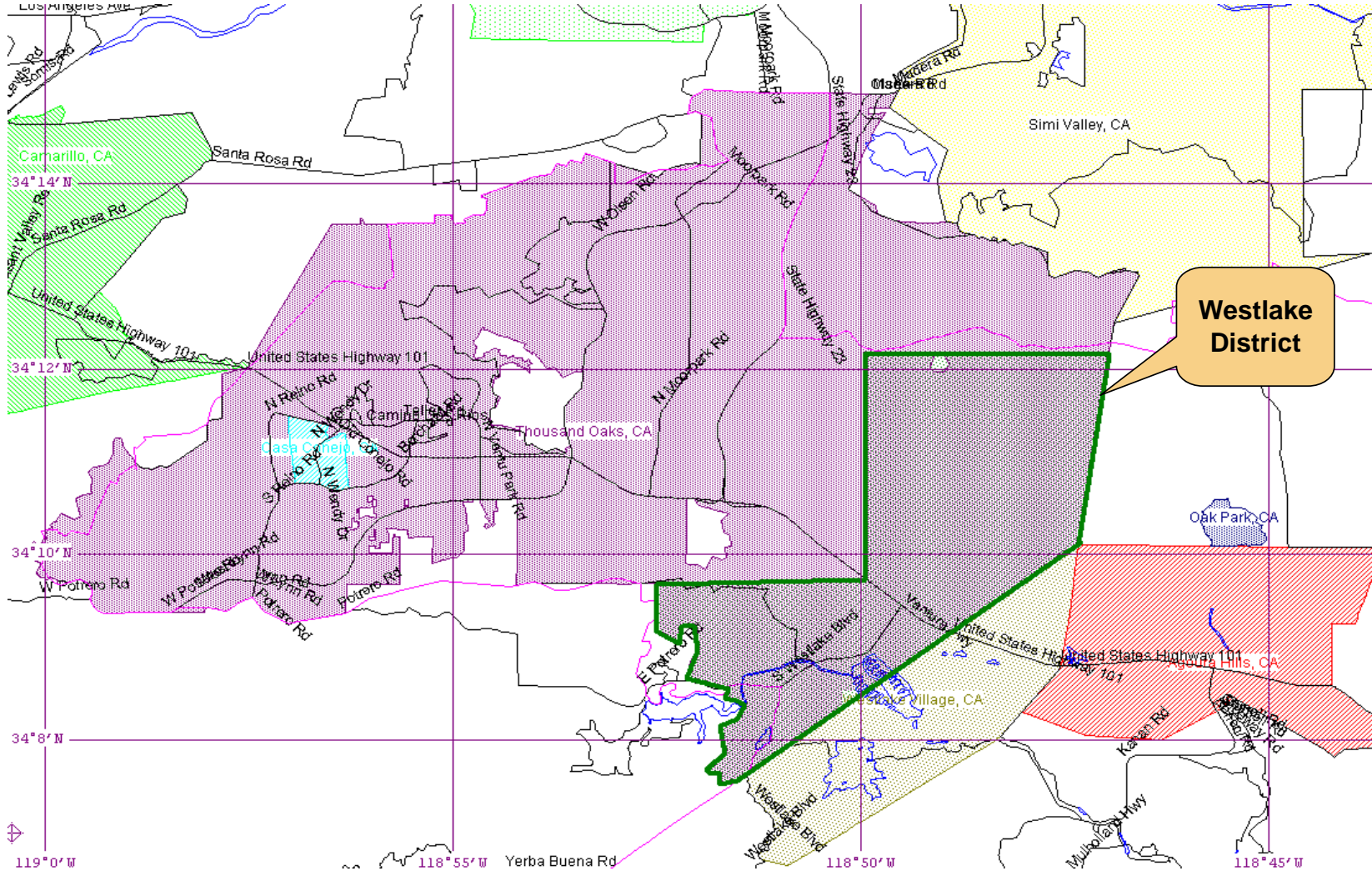
Historical and Projected Average Day, Maximum Day, and Peak Demand

Year	Historical Annual (imported)		Average Day Demand		Maximum Day Demand		MDD ADD Ratio	Estimated Peak Hour Demand		PHD MDD Ratio	PHD ADD Ratio	Measured Peak Hour Demand		PHD MDD Ratio
	Demand (AFY)	Demand (MGY)	Demand (MGD)	Per Service (GPD)	Demand (MGD)	Per Service (GPD)		(MGD)	(GPM)			(MGD)	(GPM)	
1984	6,479	2,111	5.784	1,316	11.300	2,571	1.95	16.950	11,771	2.93	1.50			
1985	6,318	2,059	5.640	1,221	11.800	2,554	2.09	17.700	12,292	3.14	1.50			
1986	6,398	2,085	5.712	1,153	11.500	2,321	2.01	17.250	11,979	3.02	1.50			
1987	6,912	2,252	6.170	1,149	11.400	2,123	1.85	17.100	11,875	2.77	1.50			
1988	7,660	2,496	6.838	1,182	12.900	2,229	1.89	19.350	13,438	2.83	1.50			
1989	8,977	2,925	8.015	1,298	13.900	2,251	1.73	20.850	14,479	2.60	1.50			
1990	8,862	2,888	7.912	1,245	14.800	2,329	1.87	22.200	15,417	2.81	1.50			
1991	7,207	2,348	6.434	998	13.500	2,093	2.10	20.250	14,063	3.15	1.50			
1992	7,586	2,472	6.773	1,039	15.100	2,316	2.23	22.650	15,729	3.34	1.50			
1993	7,875	2,566	7.030	1,075	14.000	2,140	1.99	21.000	14,583	2.99	1.50			
1994	8,200	2,672	7.320	1,117	15.000	2,288	2.05	22.500	15,625	3.07	1.50			
1995	8,058	2,626	7.194	1,095	15.000	2,282	2.09	22.500	15,625	3.13	1.50			
1996	8,345	2,719	7.450	1,127	15.000	2,270	2.01	22.500	15,625	3.02	1.50			
1997	8,668	2,824	7.738	1,159	15.507	2,323	2.00	23.261	16,153	3.01	1.50			
1998	7,723	2,516	6.894	1,026	15.507	2,307	2.25	23.261	16,153	3.37	1.50			
1999	9,146	2,980	8.165	1,204	16.503	2,433	2.02	24.755	17,191	3.03	1.50			
2000	9,170	2,988	8.187	1,202	15.051	2,209	1.84	22.577	15,678	2.76	1.50			
2001	8,459	2,756	7.552	1,105	15.311	2,241	2.03	22.967	15,949	3.04	1.50			
2002	9,248	3,013	8.256	1,207	15.792	2,308	1.91	23.688	16,450	2.87	1.50			
2003	8,782	2,862	7.840	1,159	15.477	2,287	1.97	23.216	16,122	2.96	1.50			
2004	9,509	3,099	8.489	1,236	15.706	2,287	1.85	23.559	16,360	2.78	1.50			
2005	8,920	2,907	7.963	1,155	15.859	2,300	1.99	23.789	16,520	2.99	1.50			
2006	9,329	3,040	8.329	1,204	16.859	2,437	2.02	25.289	17,561	3.04	1.50			
2007	10,223	3,331	9.127	1,324	16.859	2,447	1.85	25.289	17,561	2.77	1.50			
2008	9,602	3,129	8.572	1,239	16.859	2,437	1.97	25.289	17,561	2.95	1.50			
2009	8,904	2,901	7.949	1,153	18.308	2,656	2.30	27.462	19,071	3.45	1.50			
2010	7,339	2,392	6.552	948	14.440	2,089	2.20	21.660	15,042	3.31	1.50			
5 year Average (2006-2010)			8.106	1,174	16.665	2,413	2.07	24.998	17,359	3.10	1.50			
10 year Average (2001-2010)			8.063	1,173	16.147	2,349	2.01	24.221	16,820	3.02	1.50			

California Water Service Company - Westlake District

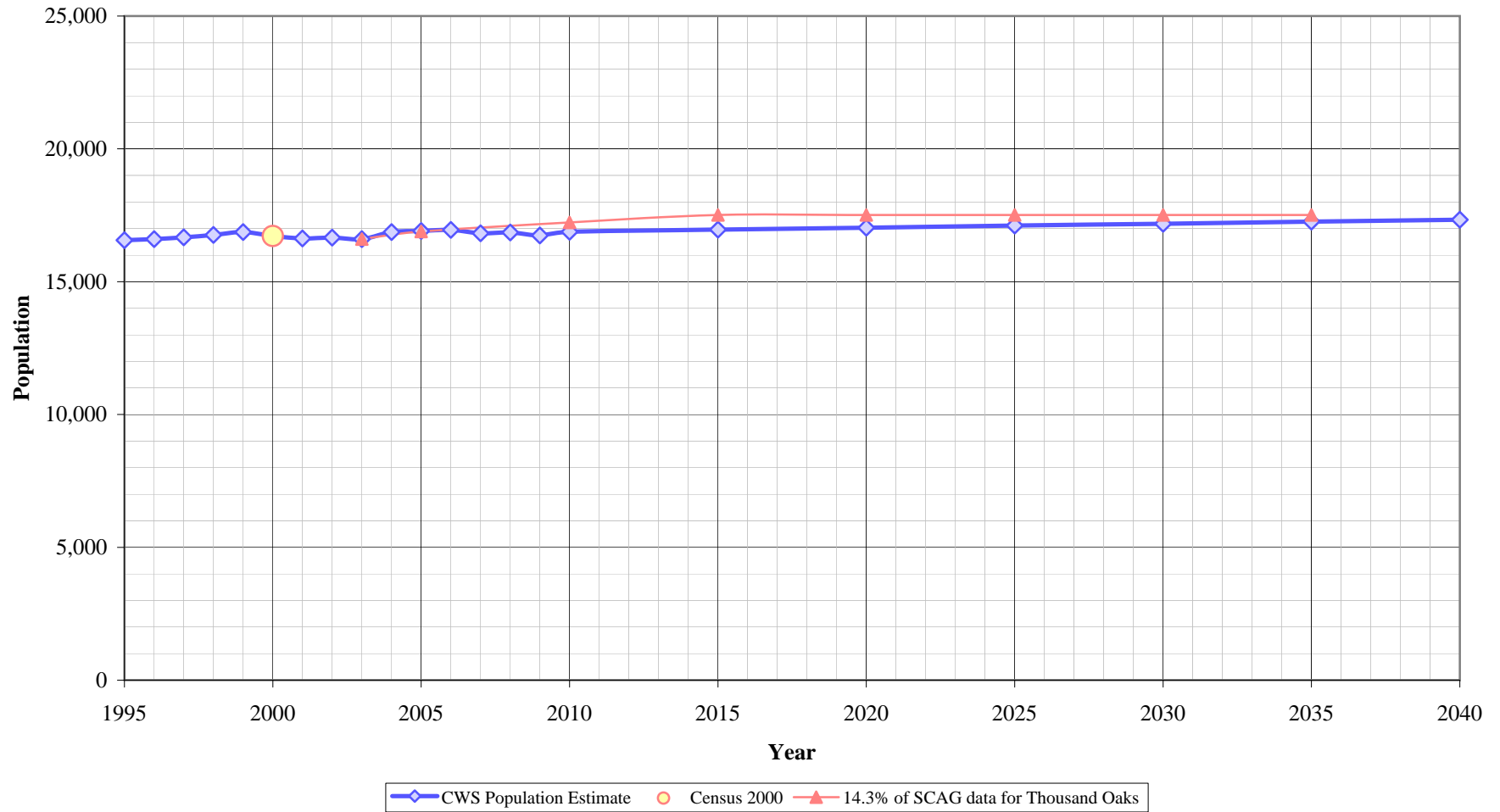
Water Supply and Demand Analysis and Projections

US Census 2000 Tract Map Summary



US Census 2000 Summary				
	Census Tract Blocks	Population	Housing Units	Density
District	111	16,717	6,982	2.39
City	761	117,005	42,958	2.72
Percentage	14.6%	14.3%	16.3%	

Westlake District Population Estimates



California Water Service Company - Westlake District
Water Supply and Demand Analysis and Projections

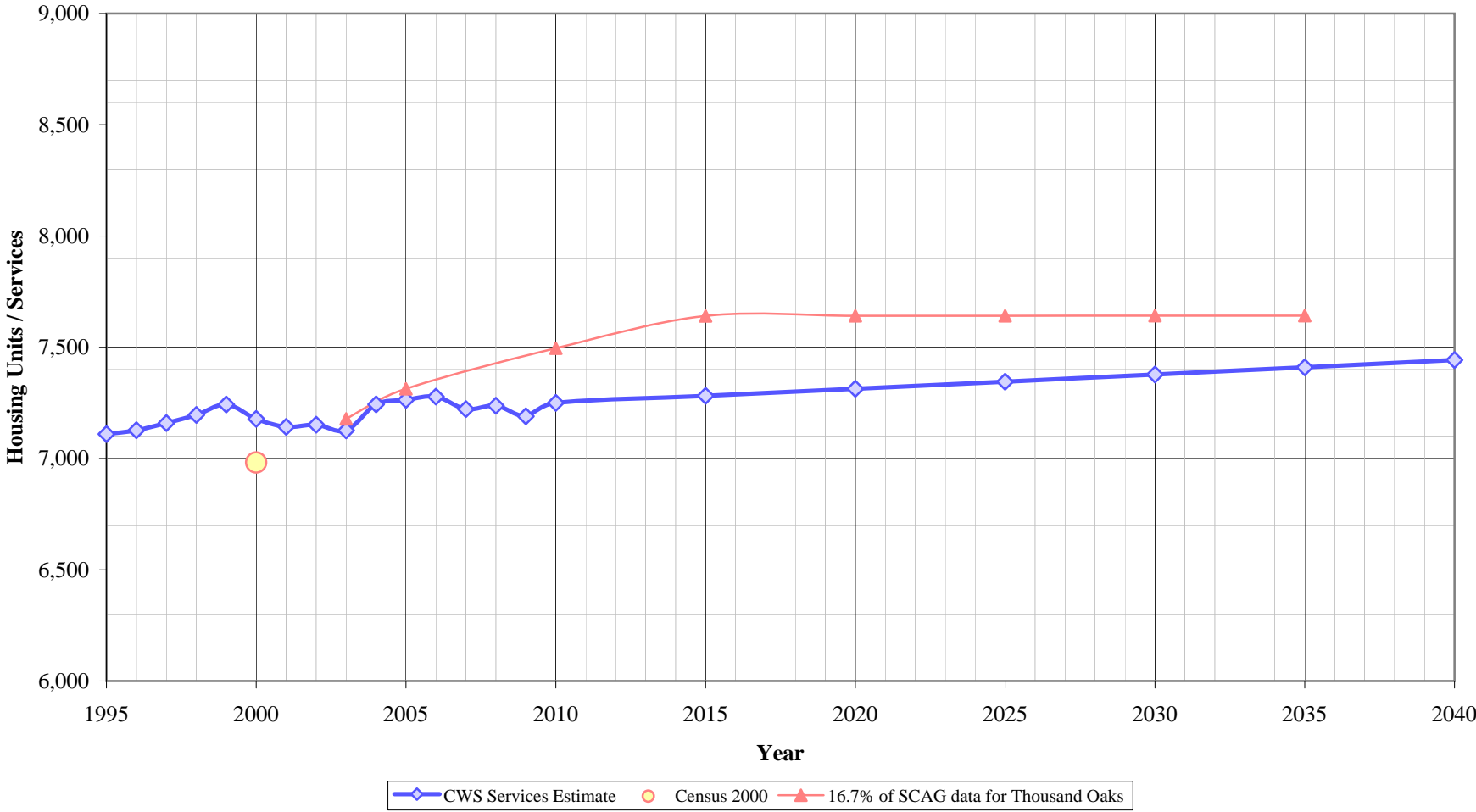
Population as of the 2005 Average Annual Services
 Estimated District Population based on 2000 U.S. Census Data & Annual Service Count

District Communities Served: Thousand Oaks

Year	Metered Single Family Residential Services (DU)	Multi Family Residential			Flat Rate Residential Services (DU)	Total Residential Services (DU)	Estimated District Population
		Services	Residential Units (DU)	Unit Density			
1995	6,048	65	1,062	16.3	0	7,110	16,560
1996	6,065	65	1,062	16.3	0	7,127	16,600
1997	6,097	65	1,062	16.3	0	7,159	16,670
1998	6,134	65	1,062	16.3	0	7,196	16,760
1999	6,181	65	1,062	16.3	0	7,243	16,870
2000	6,116	65	1,062	16.3	0	7,178	16,720
2001	6,079	65	1,063	16.4	0	7,142	16,630
2002	6,090	65	1,062	16.3	0	7,152	16,660
2003	6,031	64	1,095	17.1	0	7,126	16,600
2004	6,117	65	1,127	17.3	0	7,244	16,870
2005	6,134	65	1,129	17.4	0	7,263	16,910
2006	6,147	65	1,131	17.4	0	7,278	16,950
2007	6,149	65	1,073	16.5	0	7,222	16,820
2008	6,142	120	1,095	9.1	0	7,237	16,850
2009	6,121	125	1,069	8.6	0	7,190	16,740
2010	6,122	125	1,128	9.0	0	7,250	16,880
2015	6,127	126	1,155	9.2	0	7,282	16,960
2020	6,132	126	1,182	9.4	0	7,314	17,030
2025	6,137	126	1,209	9.6	0	7,345	17,110
2030	6,142	127	1,236	9.7	0	7,378	17,180
2035	6,147	127	1,263	9.9	0	7,410	17,260
2040	6,151	128	1,291	10.1	0	7,442	17,330

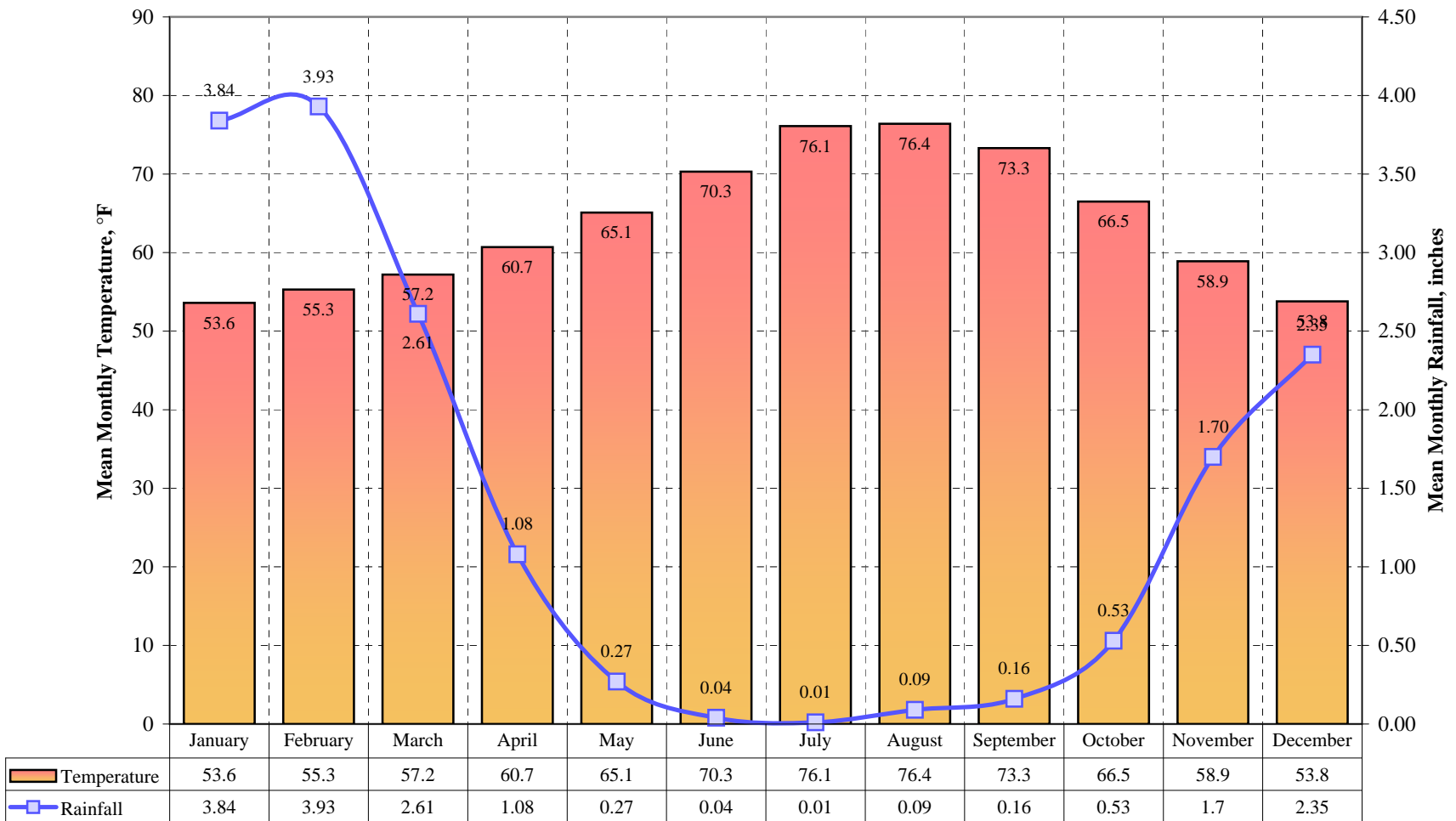
US Census 2000		Calculated Persons per CWS DU	Calculated Persons per US Census Housing Unit
Population	Housing Units		
16,717	6,982	2.329	2.394

Westlake District Housing Estimates



Westlake District

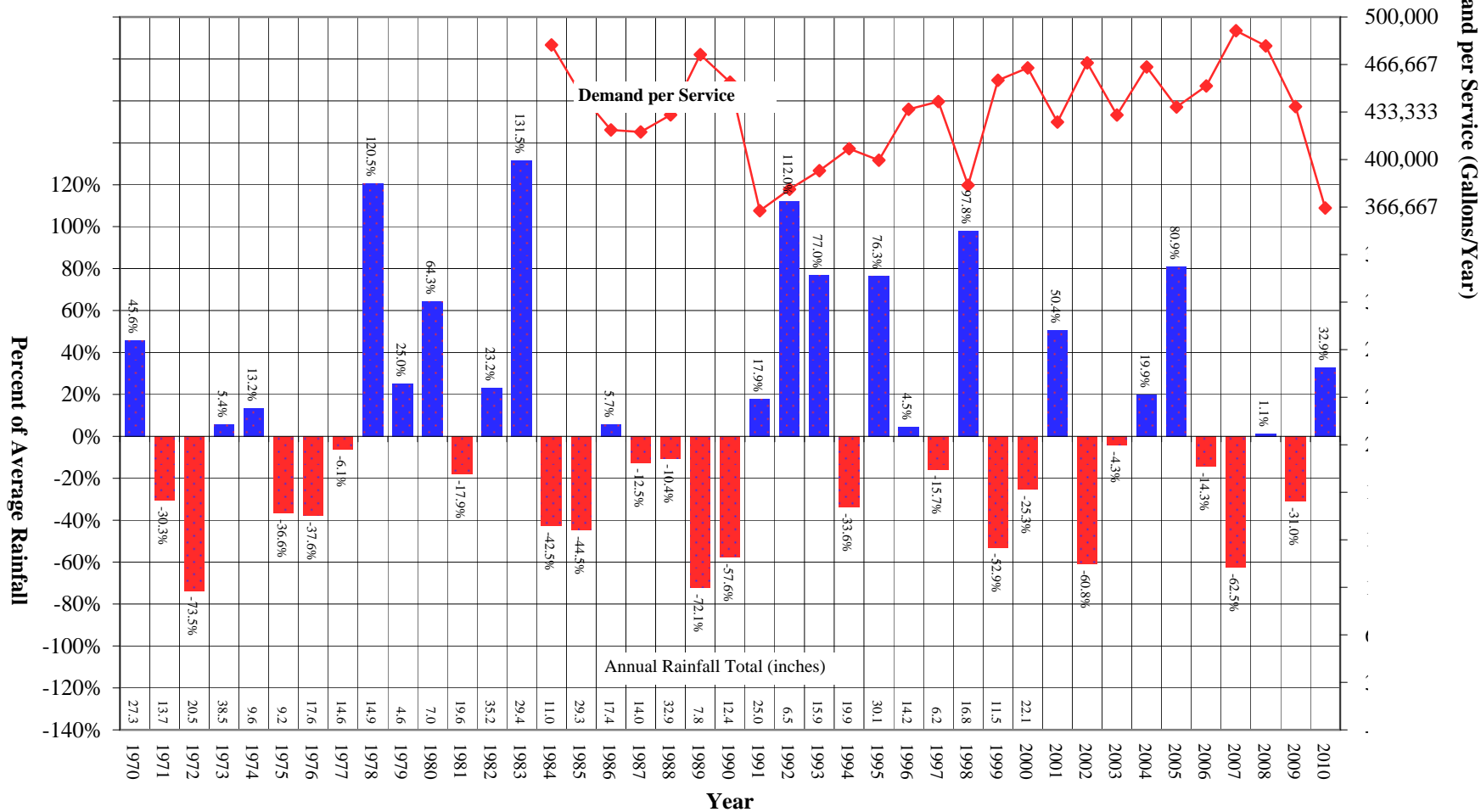
Average Monthly Temperature and Rainfall



Westlake District

Comparison of Annual Rainfall to Historical Average

Average Annual Rainfall = 17.71 inches



California Water Service Company - Westlake
Water Supply and Demand Analysis and Projections

Temperature & Rainfall History (Fahrenheit, Inches)

Year	Annual Average Temp.	Annual Average Rainfall	Rainfall Percent Variation	Demand per Service (Gal / Yr)	Percent of Average Demand	Year	Annual Average Temp.	Annual Average Rainfall	Rainfall Percent Variation	Demand per Service (Gal / Yr)	Percent of Average Demand
1970	64.2	24.20	45.6%			1995	63.8	29.30	76.3%	399,554	92.2%
1971	63.0	11.58	-30.3%			1996	65.0	17.36	4.5%	435,253	100.5%
1972	64.5	4.40	-73.5%			1997	64.5	14.01	-15.7%	440,721	101.7%
1973	63.2	17.52	5.4%			1998	61.1	32.87	97.8%	382,033	88.2%
1974	64.7	18.81	13.2%			1999	63.3	7.83	-52.9%	455,661	105.2%
1975	63.6	10.54	-36.6%			2000	64.2	12.41	-25.3%	464,305	107.2%
1976	64.9	10.37	-37.6%			2001	63.5	25.00	50.4%	426,347	98.4%
1977	64.4	15.61	-6.1%			2002	63.8	6.51	-60.8%	467,831	108.0%
1978	64.0	36.64	120.5%			2003	64.5	15.91	-4.3%	431,238	99.5%
1979	63.8	20.78	25.0%			2004	64.5	19.92	19.9%	464,943	107.3%
1980	64.1	27.30	64.3%			2005	65.8	30.06	80.9%	436,899	100.8%
1981	65.3	13.65	-17.9%			2006	66.4	14.24	-14.3%	451,623	104.2%
1982	62.5	20.47	23.2%			2007	65.1	6.24	-62.5%	490,339	113.2%
1983	65.0	38.48	131.5%			2008	64.9	16.81	1.1%	479,700	110.7%
1984	66.3	9.55	-42.5%	480,371	110.9%	2009	64.0	11.47	-31.0%	437,156	100.9%
1985	64.5	9.23	-44.5%	445,579	102.8%	2010	63.3	22.09	32.9%	366,011	84.5%
1986	65.3	17.57	5.7%	420,737	97.1%	2011					
1987	64.5	14.55	-12.5%	419,319	96.8%	2012					
1988	65.1	14.89	-10.4%	431,301	99.5%	2013					
1989	65.5	4.63	-72.1%	473,659	109.3%	2014					
1990	65.7	7.04	-57.6%	454,330	104.9%	2015					
1991	64.4	19.59	17.9%	364,163	84.1%	2016					
1992	66.0	35.23	112.0%	379,194	87.5%	2017					
1993	65.2	29.41	77.0%	392,247	90.5%	2018					
1994	63.3	11.04	-33.6%	407,603	94.1%	2019					

Source: Western Regional Climate Center: <http://www.wrcc.dri.edu/cgi-bin/cliMAIN.pl?ca9785>

Calendar Year	Average Water Year	Normal Water Year	Single-Dry Water Year	Multiple-Dry Water Years			
				1	2	3	4
	-	2003	2002	2006	2007	2008	2009
Total Demand	435,850	431,238	467,831	451,623	490,339	479,700	437,156
Difference from Average	100.0%	100.0%	108.5%	104.7%	113.7%	111.2%	101.4%

**California Water Service Company - Westlake
Water Supply and Demand Analysis and Projections**

Temperature Data

Station:(049785) WOODLAND HLS PIERCE CL															
From Year=1949 To Year=2010															
	Monthly Averages			Daily Extremes				Monthly Extremes				Max. Temp.		Min. Temp.	
	Max.	Min.	Mean	High	Date	Low	Date	Highest Mean	Year	Lowest Mean	Year	>= 90 F	<= 32 F	<= 32 F	<= 0 F
	F	F	F	F	dd/yyyy or yyyymmdd	F	dd/yyyy or yyyymmdd	F	-	F	-	# Days	# Days	# Days	# Days
January	67.9	39.4	53.6	93	14/1975	19	7/1950	61	2003	45.6	1950	0.1	0	5.4	0
February	69.8	40.7	55.3	94	26/1986	18	6/1989	61.5	1963	48.2	1956	0.2	0	3.1	0
March	72.5	41.9	57.2	101	26/1988	26	13/1954	65.2	2004	50.1	1952	0.9	0	1.6	0
April	76.8	44.6	60.7	105	6/1989	30	9/1953	67.4	1989	51.3	1967	3.5	0	0.3	0
May	81.1	49.1	65.1	113	29/1984	33	4/1950	72.7	1984	57.6	1998	6.1	0	0	0
June	87.4	53.1	70.3	113	15/1961	36	7/1950	77.8	1981	63	1952	13	0	0	0
July	95	57.2	76.1	119	22/2006	42	1/1952	84	2006	71.7	1949	24.4	0	0	0
August	95.4	57.4	76.4	116	24/1985	42	6/1950	81.7	1992	70.3	1954	25	0	0	0
September	91.9	54.7	73.3	115	6/1955	38	20/1954	79.6	1984	67.8	1950	18.2	0	0	0
October	83.9	49.1	66.5	110	1/1980	27	30/1971	71.6	2003	61.3	1954	9	0	0.1	0
November	75	42.7	58.9	101	7/2006	23	17/1958	63.5	2006	52	1994	1.8	0	1.2	0
December	68.7	38.9	53.8	96	3/1958	20	29/1954	58.8	1958	49	1971	0.1	0	5.5	0
Annual	80.5	47.4	63.9	119	20060722	18	19890206	66.4	2006	60.5	1952	102.3	0	17.2	0

Monthly Average ETo Report	Jan	Feb	Mar	Apr	May	Jun	Jul	Aug	Sep	Oct	Nov	Dec	Total
	1.86	2.24	3.72	4.80	5.27	5.70	5.58	5.27	4.20	3.41	2.40	1.86	46.31

Source: California Irrigation Management Information System (CIMIS), <http://www.cimis.water.ca.gov/cimis/welcome.jsp>, EvapoTranspiration (Eto) Zones Map, Zone 3

**California Water Service Company - Westlake
Water Supply and Demand Analysis and Projections**

Precipitaion Data

Station:(049785) WOODLAND HLS PIERCE CL														
From Year=1949 To Year=2010														
Precipitation												Total Snowfall		
	Mean	High	Year	Low	Year	1 Day Max.	>= 0.01 in.	>= 0.10 in.	>= 0.50 in.	>= 1.00 in.	Mean	High	Year	
	in.	in.	-	in.	-	in.	dd/yyyy or yyyymmdd	# Days	# Days	# Days	# Days	in.	in.	-
January	3.84	16.8	1995	0	1972	4.62	11/2001	6	5	2	1	0	0	1950
February	3.93	18.02	1998	0	1961	5.78	12/2003	6	4	2	1	0	0.5	1989
March	2.61	12.39	1983	0	1956	6.06	1/1983	5	4	2	1	0	0	1950
April	1.08	6.76	1965	0	1962	2.49	14/1988	3	2	1	0	0	0	1950
May	0.27	4.06	1998	0	1950	2	8/1977	1	1	0	0	0	0	1950
June	0.04	0.67	1999	0	1950	0.52	5/1993	0	0	0	0	0	0	1950
July	0.01	0.17	1995	0	1949	0.17	16/1995	0	0	0	0	0	0	1949
August	0.09	2.49	1977	0	1949	2.35	17/1977	1	0	0	0	0	0	1949
September	0.16	2.26	1976	0	1949	1.12	10/1976	1	0	0	0	0	0	1949
October	0.53	5.93	1987	0	1949	3.2	31/1987	2	1	0	0	0	0	1949
November	1.7	12.6	1965	0	1956	6.57	29/1970	4	2	1	1	0	0	1949
December	2.35	8.44	2004	0	1958	4.98	29/1965	5	3	2	1	0	0	1949
Annual	16.62	38.48	1983	3.92	1953	6.57	19701129	34	22	10	5	0	0.5	1989

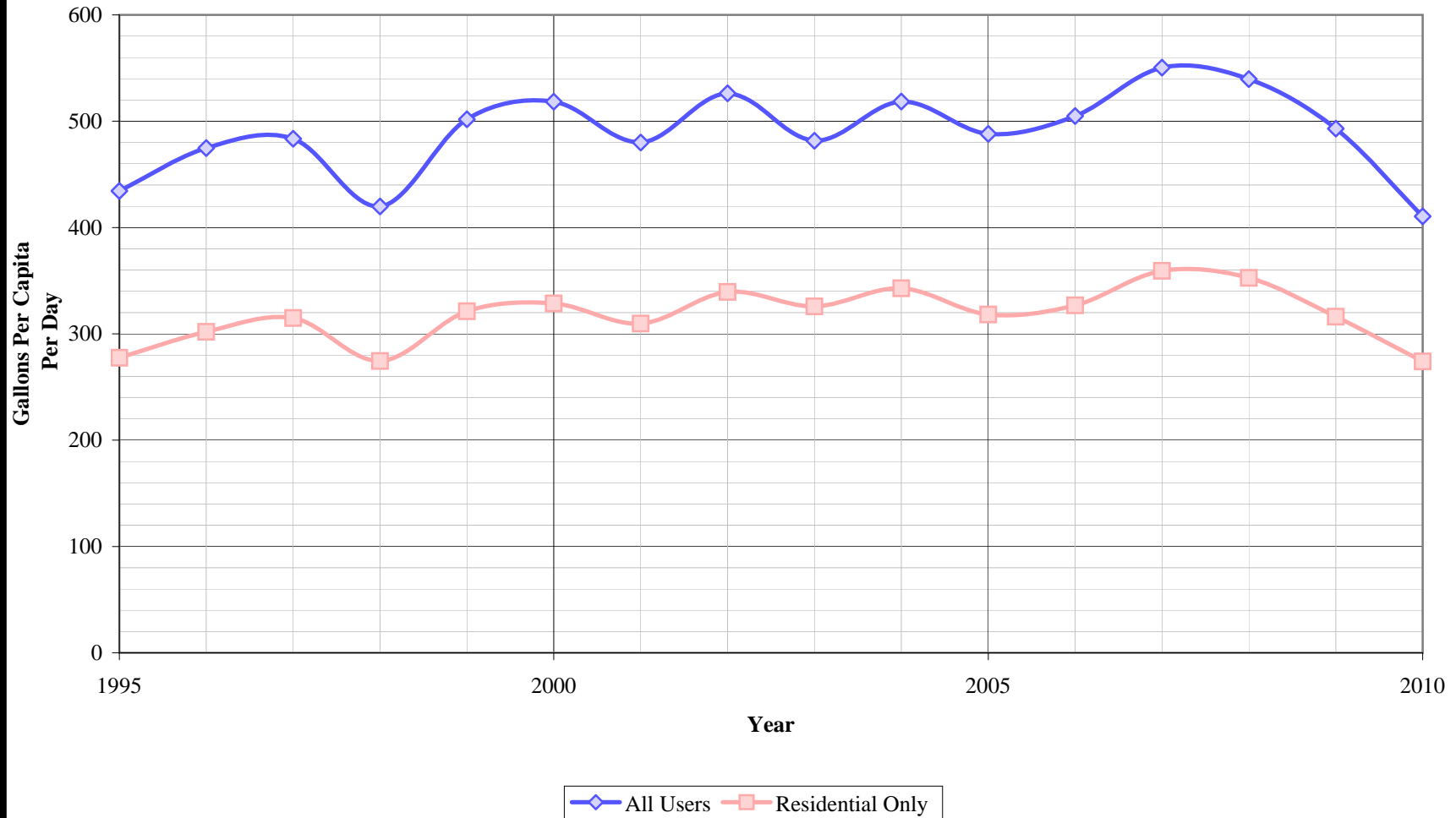
**California Water Service Company - Westlake District
Water Supply and Demand Analysis and Projections**

Worksheet 21

Groundwater Production Facilities

District does not have groundwater production facilities

Westlake District Per Capita Consumption



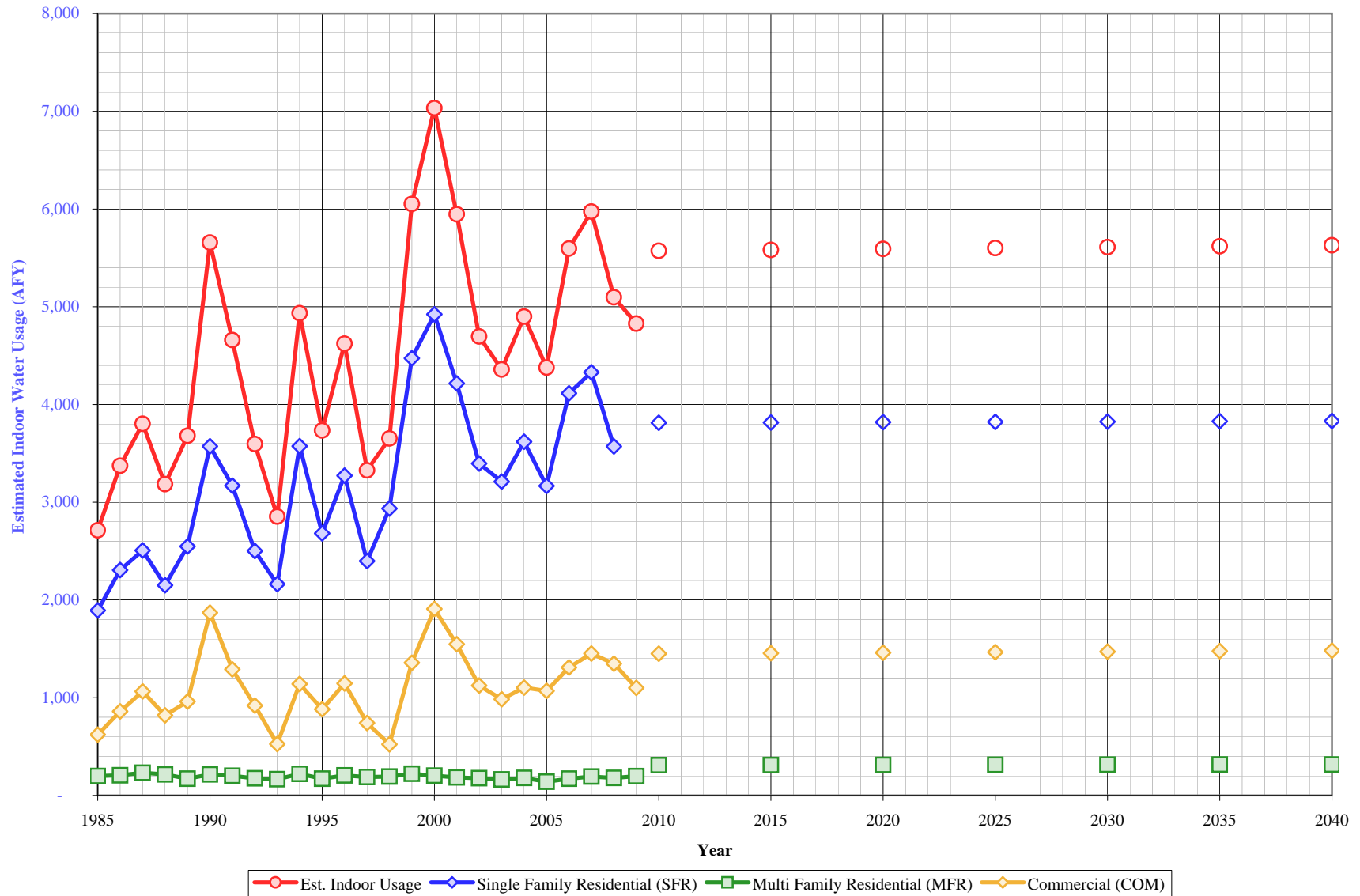
**California Water Service Company - Westlake District
Water Supply and Demand Analysis and Projections**

Per Capita Water Demand Calculation

Year	All Users			Residential Only		
	Usage (AFY)	Usage (MGY)	Gallons Per Capita Per Day	Usage (AFY)	Usage (MGY)	Gallons Per Capita Per Day
1995	8,058	2,626	434	5,148	1,677	278
1996	8,828	2,877	475	5,613	1,829	302
1997	9,028	2,942	483	5,879	1,916	315
1998	7,881	2,568	420	5,152	1,679	274
1999	9,484	3,090	502	6,072	1,978	321
2000	9,708	3,163	518	6,153	2,005	329
2001	8,940	2,913	480	5,768	1,879	310
2002	9,822	3,200	526	6,333	2,064	339
2003	8,956	2,918	482	6,058	1,974	326
2004	9,799	3,193	519	6,478	2,111	343
2005	9,245	3,013	488	6,027	1,964	318
2006	9,587	3,124	505	6,206	2,022	327
2007	10,370	3,379	550	6,770	2,206	359
2008	10,184	3,319	540	6,657	2,169	353
2009	9,246	3,013	493	5,927	1,931	316
2010	7,763	2,530	411	5,182	1,689	274
5 Yr. Avg.	9,430	3,073	500	6,148	2,003	326
10 Yr. Avg.	9,391	3,060	499	6,141	2,001	326

Five year average is from years 2006 through 2010.

Westlake District Estimated Indoor Water Usage



California Water Service Company -Westlake District
Water Supply and Demand Analysis and Projections

Estimated Indoor/Outdoor Water Usage

Year	Single Family Residential (SFR)								Multi Family Residential (MFR)				Commercial (COM)				Est. Indoor Usage AFY
	Metered Single Family Residential Indoor Use (Annualized 90% of January Total)			Indoor Flat Rate Usage (AFY)	Total SFR Indoor Usage			Multi Family Residential January Usage (CCF)	Multi Family Residential Indoor Use (Annualized 90% of January Total)			Commercial (CCF)	Commercial Indoor Use (Annualized 90% of January Total)				
	JAN (CCF)	AFY	AFY/Service		AFY	GPD/Service	%		AFY	GPD/Service	%		AFY	GPD/Service	%		
1985	76,329	1,892	4,246	0	1,892	398	55%	7,973	198	3,330	78%	25,090	622	2,343	44%	2,712	
1986	93,006	2,306	4,551	0	2,306	452	65%	8,329	207	3,478	75%	34,682	860	2,908	54%	3,372	
1987	101,108	2,507	4,947	0	2,507	452	65%	9,344	232	3,830	79%	42,901	1,064	3,391	55%	3,802	
1988	86,745	2,151	5,353	0	2,151	359	49%	8,664	215	3,551	75%	33,074	820	2,578	40%	3,186	
1989	102,753	2,548	5,708	0	2,548	398	52%	6,884	171	2,875	64%	38,754	961	2,697	37%	3,679	
1990	144,099	3,573	5,867	0	3,573	544	71%	8,654	215	3,614	82%	75,402	1,869	4,838	74%	5,657	
1991	127,838	3,170	5,934	0	3,170	477	78%	8,074	200	2,749	89%	52,013	1,290	3,318	65%	4,659	
1992	100,892	2,501	5,988	0	2,501	373	56%	7,061	175	2,404	68%	37,056	919	2,357	45%	3,595	
1993	87,207	2,162	6,012	0	2,162	321	46%	6,679	166	2,274	67%	21,202	526	1,337	27%	2,853	
1994	144,142	3,574	6,027	0	3,574	529	72%	8,867	220	3,019	84%	45,988	1,140	2,884	56%	4,934	
1995	108,128	2,681	6,048	0	2,681	396	55%	6,900	171	2,350	68%	35,586	882	2,238	46%	3,734	
1996	131,954	3,272	6,065	0	3,272	482	61%	8,258	205	2,812	85%	46,239	1,146	2,835	65%	4,623	
1997	96,699	2,397	6,097	0	2,397	351	43%	7,572	188	2,578	72%	29,863	740	1,669	39%	3,326	
1998	118,397	2,935	6,134	0	2,935	427	60%	7,800	193	2,656	78%	21,111	523	1,131	33%	3,652	
1999	180,419	4,473	6,181	0	4,473	646	77%	8,952	222	3,048	91%	54,717	1,357	2,890	66%	6,052	
2000	198,553	4,923	6,116	0	4,923	719	83%	8,133	202	2,769	84%	76,977	1,909	3,341	90%	7,033	
2001	170,040	4,216	6,079	0	4,216	619	76%	7,429	184	2,530	82%	62,389	1,547	2,446	80%	5,947	
2002	136,962	3,396	6,090	0	3,396	498	56%	7,121	177	2,425	73%	45,336	1,124	1,790	43%	4,696	
2003	129,517	3,211	6,031	0	3,211	475	55%	6,567	163	2,271	74%	39,708	984	1,604	44%	4,358	
2004	145,938	3,618	6,117	0	3,618	528	58%	7,194	178	2,450	80%	44,487	1,103	1,752	47%	4,900	
2005	127,745	3,167	6,134	0	3,167	461	54%	5,648	140	1,923	66%	43,151	1,070	1,667	52%	4,377	
2006	165,966	4,115	6,147	0	4,115	598	69%	6,911	171	2,353	81%	52,814	1,309	2,016	58%	5,596	
2007	174,610	4,329	6,149	0	4,329	629	66%	7,803	193	2,657	81%	58,543	1,451	2,360	58%	5,974	
2008	143,998	3,570	6,142	0	3,570	519	56%	7,186	178	1,325	75%	54,385	1,348	2,221	60%	5,097	
2009	142,422	3,531	6,121	0	3,531	515	62%	7,917	196	1,402	87%	44,377	1,100	1,836	52%	4,828	
2010	---	---	---	---	3,813	556	63%	---	310	2,211	78%	---	1,450	2,418	53%	5,572	
2015	---	---	---	---	3,816	556	63%	---	311	2,211	78%	---	1,455	2,418	53%	5,582	
2020	---	---	---	---	3,819	556	63%	---	312	2,211	78%	---	1,460	2,418	53%	5,591	
2025	---	---	---	---	3,822	556	63%	---	313	2,211	78%	---	1,466	2,418	53%	5,601	
2030	---	---	---	---	3,825	556	63%	---	314	2,211	78%	---	1,471	2,418	53%	5,610	
2035	---	---	---	---	3,828	556	63%	---	315	2,211	78%	---	1,476	2,418	53%	5,620	
2040	---	---	---	---	3,831	556	63%	---	317	2,211	78%	---	1,482	2,418	53%	5,629	

California Water Service Company - Westlake District

Water Supply and Demand Analysis and Projections

Comparison of Projected Demand and Conservation Savings Between SBx7-7 Compliance Targets and Actual Proposed Programs

Year	SBx7-7 Compliance Target (gpcd)	Anticipated GPCD with Proposed Programs*	Estimated Population	Undadjusted Baseline Demand (AFY)	SBx7-7 Compliance Target Demand (AFY)	Anticipated Demand with Proposed Programs (AFY)	Compliance Target Savings Requirement (AFY)	Savings Due to Proposed Programs (AFY)	Recycled Water Projection (AFY)
2005-2009 Average	498	498	16,854	9,396	9,396	9,396	0	0	-
2010	498	498	16,880	9,410	9,410	9,410	0	0	419
2011	487	494	16,900	9,421	9,214	9,352	207	70	419
2012	476	493	16,910	9,427	9,013	9,338	414	89	420
2013	465	492	16,930	9,438	8,816	9,330	622	108	420
2014	454	489	16,940	9,444	8,614	9,279	830	165	420
2015	443	488	16,960	9,455	8,416	9,271	1,039	184	421
2016	433	469	16,970	9,460	8,231	8,915	1,230	545	421
2017	423	450	16,990	9,472	8,050	8,564	1,421	907	421
2018	413	431	17,000	9,477	7,865	8,207	1,613	1,270	422
2019	403	412	17,020	9,488	7,683	7,855	1,805	1,634	422
2020	393	393	17,030	9,494	7,497	7,497	1,997	1,997	422
2021	393	393	17,050	9,505	7,506	7,506	1,999	1,999	422
2022	393	393	17,060	9,511	7,510	7,510	2,000	2,000	423
2023	393	393	17,080	9,522	7,519	7,519	2,003	2,003	423
2024	393	393	17,090	9,527	7,523	7,523	2,004	2,004	423
2025	393	393	17,110	9,538	7,532	7,532	2,006	2,006	424
2026	393	393	17,120	9,544	7,537	7,537	2,007	2,007	424
2027	393	393	17,140	9,555	7,545	7,545	2,010	2,010	424
2028	393	393	17,150	9,561	7,550	7,550	2,011	2,011	425
2029	393	393	17,170	9,572	7,559	7,559	2,013	2,013	425
2030	393	393	17,180	9,577	7,563	7,563	2,015	2,015	425
2031	393	393	17,200	9,589	7,572	7,572	2,017	2,017	425
2032	393	393	17,210	9,594	7,576	7,576	2,018	2,018	426
2033	393	393	17,230	9,605	7,585	7,585	2,020	2,020	426
2034	393	393	17,240	9,611	7,589	7,589	2,022	2,022	426
2035	393	393	17,260	9,622	7,598	7,598	2,024	2,024	427
2036	393	393	17,270	9,628	7,603	7,603	2,025	2,025	427
2037	393	393	17,290	9,639	7,611	7,611	2,027	2,027	427
2038	393	393	17,300	9,644	7,616	7,616	2,029	2,029	428
2039	393	393	17,320	9,655	7,625	7,625	2,031	2,031	428
2040	393	393	17,330	9,661	7,629	7,629	2,032	2,032	428

*Note: The district is not projected to achieve its district-specific 2015 SBx7-7 compliance target through the proposed 2011-2015 conservation program portfolio. The district will achieve compliance with its 2015 SBx7-7 compliance target through a regional alliance. For the purpose of this analysis it is assumed that there will be a linear reduction in GPCD from 2015-2020 to achieve the district-specific 2020 SBx7-7 compliance target. The district may ultimately elect to achieve 2020 SBx7-7 compliance through a regional alliance. GPCD will remain flat from 2020 through 2040.