

Water Resources Planning Department

Water Supply / Demand Analysis and Projections
for
Stockton District

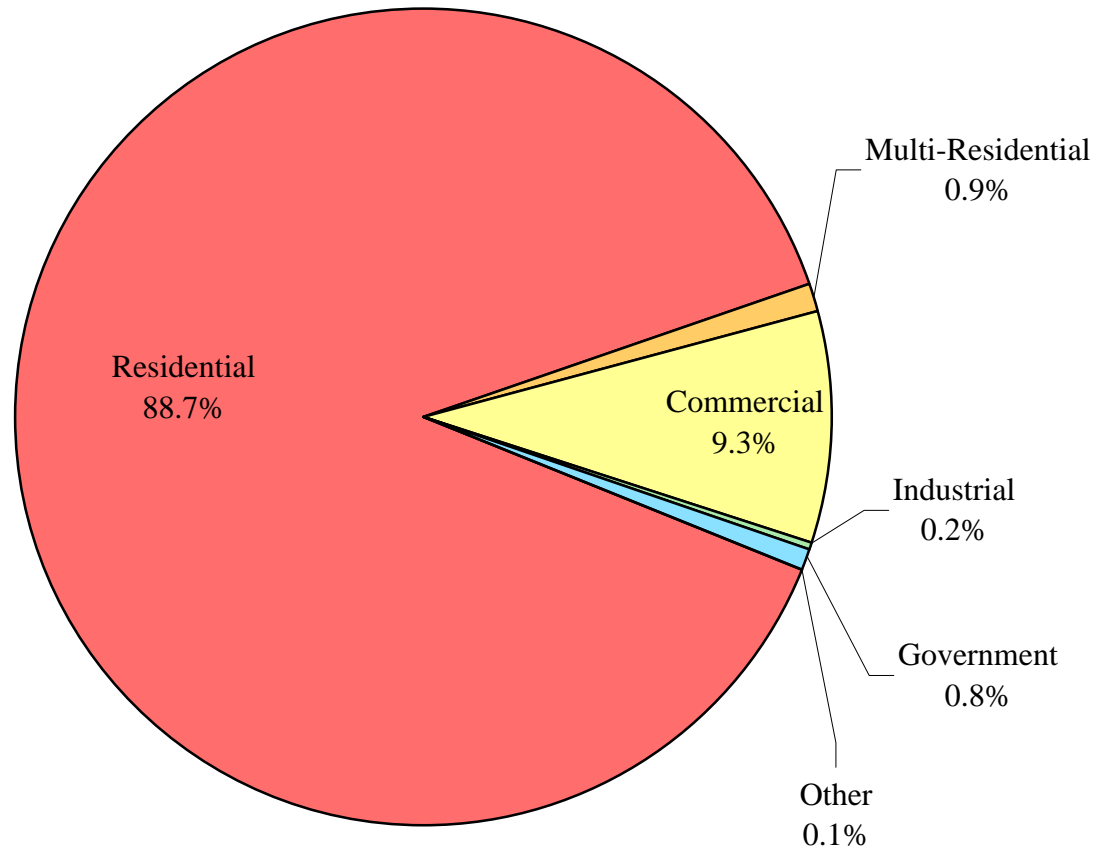
2010



Table of Contents for Worksheets

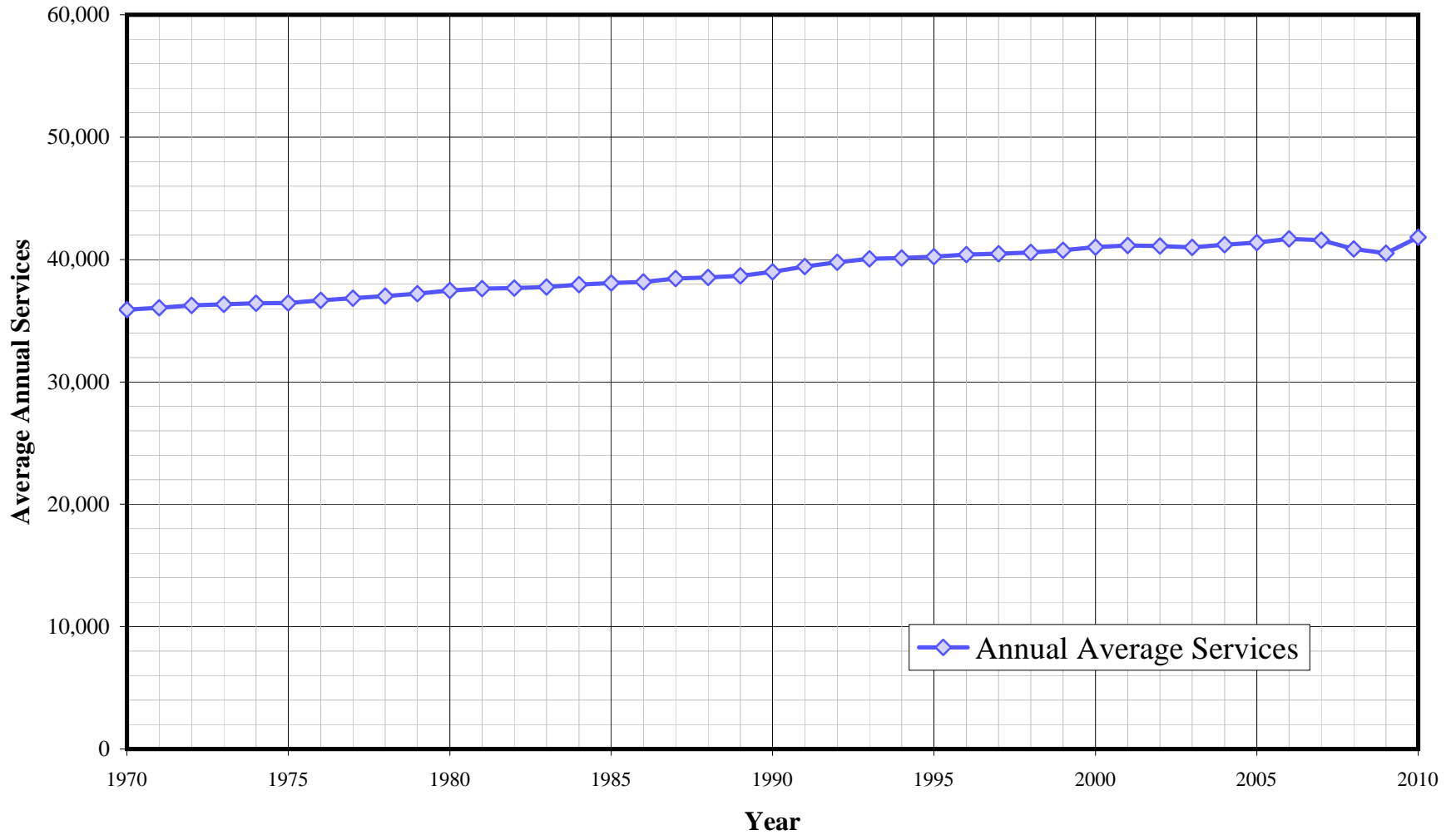
Worksheet	Title
1	Annual Services
2	Service Growth Percentage
3	District Sales (ccf)
4	District Sales (AF)
5	Demand per Service (Gallons/Service/Year)
6	Demand per Service (Gallons per Day)
7	Percentage Change in Annual Demand
8	Percentage of Total Sales
9	Percentage of Total Demand
10	Demand Scenario 1 (Low Demand Projection)
11	Demand Scenario 2 (Average Demand Projection)
12	Demand Scenario 3 (High Demand Projection)
13	Demand Scenario 4 (Alternate Service Projection)
14	not used
15	Actual & Projected Annual Average Services
16	Actual & Projected Demand in Acre-Feet
17	Projected Annual Supply by Source
18	Historical and Projected Average Day, Maximum Day, and Peak Demands
19	Population as of the 2000 Average Annual Services
20	Temperature & Rainfall History
21	Groundwater Facilities (if available)
22	Per Capita Water Demand Calculation
23	Indoor/Outdoor Water Usage
24	SB-7 Compliance Demand Worksheet

Stockton District Distribution of Services (2010)



Stockton District

Historical Annual Average Services



California Water Service Company - Stockton District
Water Supply and Demand Analysis and Projections
Annual Services

Year	Single Family Residential	Multi-Residential	Multi-Res. units	Commercial	Industrial	Government	Other	Total	Annual Change
1970	31,852	0	0	3,693	100	251	2	35,898	
1971	31,969	0	0	3,737	93	256	2	36,057	159
1972	32,136	0	0	3,763	93	256	3	36,251	194
1973	32,221	0	0	3,769	91	261	3	36,345	94
1974	32,264	235	4,724	3,574	92	264	5	36,434	89
1975	32,274	237	5,066	3,586	92	264	1	36,454	20
1976	32,426	242	5,201	3,621	93	272	2	36,656	202
1977	32,589	260	5,613	3,616	95	283	4	36,847	191
1978	32,717	273	5,976	3,641	95	285	4	37,015	168
1979	32,849	278	6,350	3,689	96	286	4	37,202	187
1980	33,074	280	6,377	3,730	95	286	4	37,469	267
1981	33,193	282	6,482	3,748	98	289	4	37,614	145
1982	33,229	281	6,599	3,764	98	293	6	37,671	57
1983	33,253	288	7,192	3,816	97	294	6	37,754	83
1984	33,366	302	7,490	3,866	98	299	7	37,938	184
1985	33,465	304	7,559	3,901	99	296	9	38,074	136
1986	33,537	308	7,600	3,919	98	294	9	38,165	91
1987	33,793	312	7,778	3,949	97	285	10	38,446	281
1988	33,904	316	7,942	3,914	98	279	18	38,529	83
1989	33,989	319	8,072	3,948	98	281	25	38,660	131
1990	34,266	319	7,623	3,993	99	280	27	38,984	324
1991	34,682	328	8,190	4,015	102	287	8	39,422	438
1992	35,034	335	8,400	3,999	106	291	2	39,767	345
1993	35,328	340	8,524	3,984	108	289	10	40,059	292
1994	35,424	342	8,546	3,956	101	285	11	40,119	60
1995	35,540	341	8,536	3,951	96	286	13	40,227	108
1996	35,755	336	8,598	3,907	94	290	16	40,398	171
1997	35,837	336	8,643	3,879	93	296	21	40,462	64
1998	35,952	337	8,585	3,870	92	297	23	40,571	109
1999	36,117	336	8,612	3,885	90	301	30	40,759	188
2000	36,341	336	8,574	3,915	91	305	27	41,015	256
2001	36,463	338	8,641	3,927	91	302	26	41,147	132
2002	36,399	331	9,057	3,944	92	310	30	41,106	-41
2003	36,261	327	9,050	3,970	92	312	35	40,996	-110
2004	36,456	326	8,899	3,984	84	311	52	41,213	217
2005	36,634	326	9,053	3,991	86	308	36	41,380	167
2006	36,924	321	8,930	4,002	87	308	37	41,679	299
2007	36,872	319	8,602	3,965	86	305	38	41,585	-94
2008	36,173	345	8,603	3,915	84	315	38	40,870	-715
2009	35,830	364	8,603	3,894	84	325	23	40,520	-350
2010	37,101	386	8,604	3,910	84	325	23	41,829	1,309
5 Yr. Avg.	36,487	335	8,758	3,953	85	312	34	41,207	-25
10 Yr. Avg.	36,435	333	8,801	3,951	88	310	34	41,151	30
20 Yr. Avg.	35,914	334	8,613	3,947	93	300	25	40,614	93

Five year average = 2005 through 2009.

Ten year average = 2000 through 2009.

Twenty year average = 1990 through 2009.

California Water Service Company - Stockton District
Water Supply and Demand Analysis and Projections
Service Growth Percentage

Year	Single Family Residential	Multi-Residential	Multi-Res. units	Commercial	Industrial	Government	Other	Total
1981	0.36%	0.71%	1.65%	0.48%	3.16%	1.05%	0.00%	0.39%
1982	0.11%	-0.35%	1.80%	0.43%	0.00%	1.38%	50.00%	0.15%
1983	0.07%	2.49%	8.99%	1.38%	-1.02%	0.34%	0.00%	0.22%
1984	0.34%	4.86%	4.14%	1.31%	1.03%	1.70%	16.67%	0.49%
1985	0.30%	0.66%	0.92%	0.91%	1.02%	-1.00%	28.57%	0.36%
1986	0.22%	1.32%	0.54%	0.46%	-1.01%	-0.68%	0.00%	0.24%
1987	0.76%	1.30%	2.34%	0.77%	-1.02%	-3.06%	11.11%	0.74%
1988	0.33%	1.28%	2.11%	-0.89%	1.03%	-2.11%	80.00%	0.22%
1989	0.25%	0.95%	1.64%	0.87%	0.00%	0.72%	38.89%	0.34%
1990	0.81%	0.00%	-5.56%	1.14%	1.02%	-0.36%	8.00%	0.84%
1991	1.21%	2.82%	7.44%	0.55%	3.03%	2.50%	-70.37%	1.12%
1992	1.01%	2.13%	2.56%	-0.40%	3.92%	1.39%	-75.00%	0.88%
1993	0.84%	1.49%	1.48%	-0.38%	1.89%	-0.69%	400.00%	0.73%
1994	0.27%	0.59%	0.26%	-0.70%	-6.48%	-1.38%	10.00%	0.15%
1995	0.33%	-0.29%	-0.12%	-0.13%	-4.95%	0.35%	18.18%	0.27%
1996	0.60%	-1.47%	0.73%	-1.11%	-2.08%	1.40%	23.08%	0.43%
1997	0.23%	0.00%	0.52%	-0.72%	-1.06%	2.07%	31.25%	0.16%
1998	0.32%	0.30%	-0.67%	-0.23%	-1.08%	0.34%	9.52%	0.27%
1999	0.46%	-0.30%	0.31%	0.39%	-2.17%	1.35%	30.43%	0.46%
2000	0.62%	0.00%	-0.44%	0.77%	1.11%	1.33%	-10.00%	0.63%
2001	0.34%	0.50%	0.78%	0.31%	0.00%	-0.98%	-3.70%	0.32%
2002	-0.17%	-2.07%	4.82%	0.43%	1.10%	2.65%	15.38%	-0.10%
2003	-0.38%	-1.18%	-0.09%	0.66%	0.00%	0.65%	16.67%	-0.27%
2004	0.54%	-0.23%	-1.66%	0.36%	-8.70%	-0.32%	48.57%	0.53%
2005	0.49%	-0.10%	1.73%	0.17%	2.38%	-0.96%	-30.77%	0.41%
2006	0.79%	-1.43%	-1.36%	1.69%	1.16%	0.00%	2.78%	0.86%
2007	-0.14%	-0.62%	-3.70%	-2.29%	-1.15%	-0.97%	2.70%	-0.36%
2008	-1.90%	8.15%	-4.77%	-1.26%	-2.33%	3.28%	0.00%	-1.72%
2009	-0.95%	5.51%	0.00%	-0.54%	0.00%	3.17%	-39.47%	-0.86%
2010	3.55%	6.04%	0.00%	0.41%	0.00%	0.00%	0.00%	3.23%
5 Yr. Avg.	-0.34%	2.30%	-1.62%	-0.45%	0.01%	0.90%	-12.95%	-0.33%
10 Yr. Avg.	-0.08%	0.85%	-0.47%	0.03%	-0.64%	0.79%	0.22%	-0.06%
15 Yr. Avg.	0.08%	0.45%	-0.26%	-0.10%	-1.18%	0.89%	7.64%	0.07%
20 Yr. Avg.	0.27%	0.69%	0.11%	-0.06%	-0.72%	0.74%	19.36%	0.24%

Five year average = 2005 through 2009.

Ten year average = 2000 through 2009.

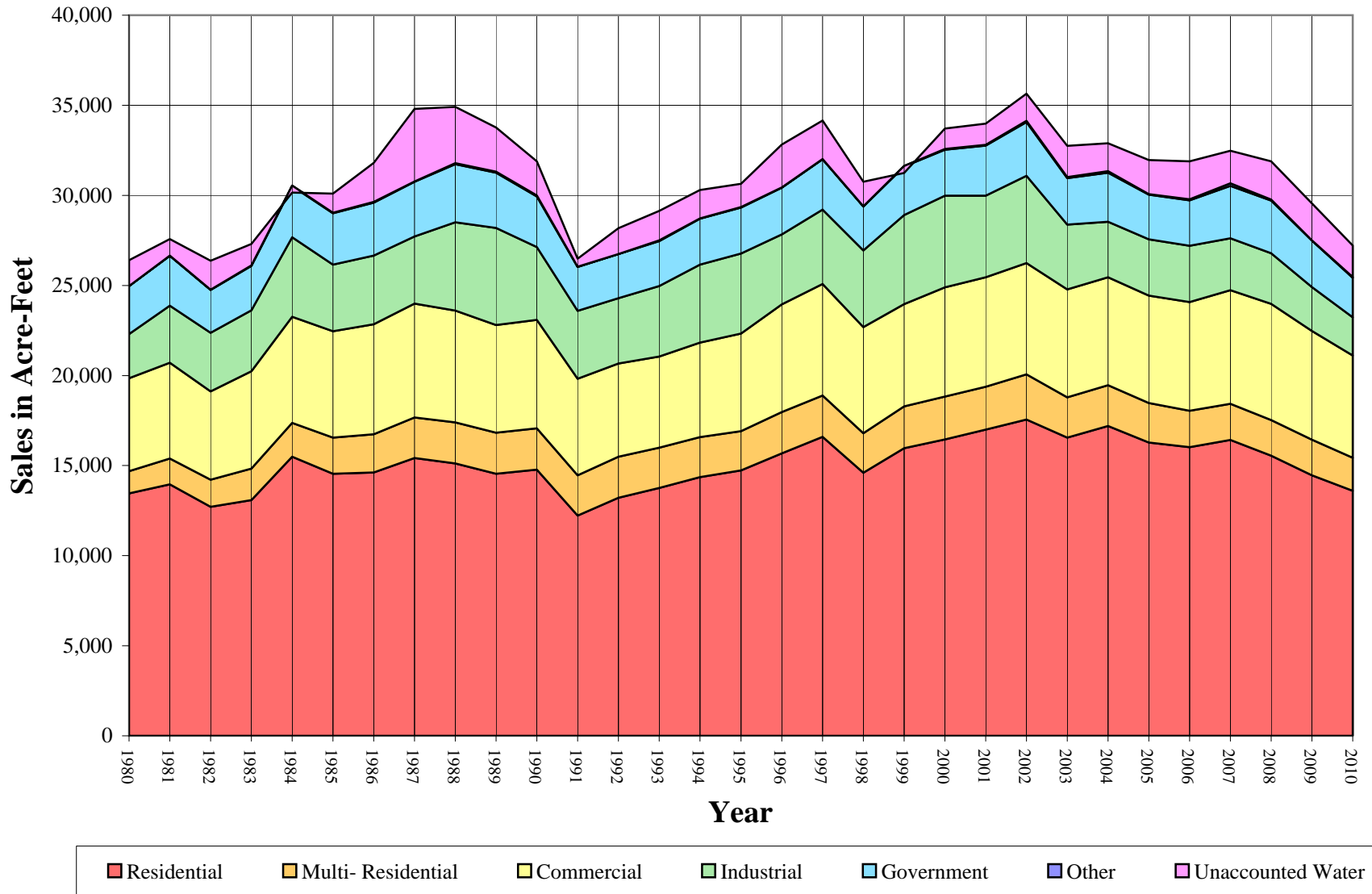
California Water Service Company - Stockton District
Water Supply and Demand Analysis and Projections
Sales(ccf)

Worksheet 3

Year	Multi-						Unaccounted Water	Total(ccf) Sales	Total(ccf) Demand	Total(kgal) Demand
	Residential	Residential	Commercial	Industrial	Government	Other				
1980	5,859,706	542,085	2,244,756	1,068,353	1,158,172	4,686	624,588	10,877,758	11,502,346	8,604,353
1981	6,082,803	620,189	2,317,668	1,379,012	1,207,283	4,062	400,405	11,611,017	12,011,422	8,985,168
1982	5,538,951	652,395	2,137,460	1,416,335	1,036,535	5,752	701,951	10,787,428	11,489,379	8,594,653
1983	5,702,408	759,300	2,351,769	1,477,077	1,074,130	7,142	518,651	11,371,826	11,890,477	8,894,695
1984	6,749,714	817,993	2,566,460	1,922,959	1,235,126	12,906	-168,947	13,305,158	13,136,211	9,826,569
1985	6,338,268	875,221	2,568,106	1,609,135	1,247,054	13,091	459,442	12,650,875	13,110,317	9,807,199
1986	6,369,512	923,405	2,660,174	1,656,300	1,282,895	19,800	940,075	12,912,086	13,852,161	10,362,137
1987	6,716,421	982,358	2,752,469	1,625,644	1,319,913	9,150	1,754,432	13,405,955	15,160,387	11,340,758
1988	6,583,265	995,370	2,704,337	2,133,931	1,407,790	20,265	1,361,391	13,844,958	15,206,349	11,375,140
1989	6,334,026	994,580	2,604,585	2,348,775	1,336,444	21,626	1,065,700	13,640,036	14,705,736	11,000,655
1990	6,434,206	1,004,072	2,619,863	1,756,973	1,226,547	27,540	823,294	13,069,201	13,892,495	10,392,309
1991	5,323,812	973,089	2,338,079	1,640,852	1,063,475	3,531	194,924	11,342,838	11,537,762	8,630,846
1992	5,757,434	993,440	2,253,066	1,577,224	1,070,148	563	624,158	11,651,875	12,276,033	9,183,111
1993	5,992,117	975,349	2,205,322	1,702,429	1,089,205	13,334	715,343	11,977,756	12,693,099	9,495,098
1994	6,255,023	971,076	2,282,130	1,888,130	1,108,522	5,453	685,654	12,510,334	13,195,988	9,871,285
1995	6,417,774	947,623	2,362,216	1,934,641	1,111,640	9,617	561,596	12,783,511	13,345,107	9,982,834
1996	6,831,161	997,793	2,601,879	1,693,033	1,127,901	9,913	1,033,811	13,261,680	14,295,491	10,693,771
1997	7,230,532	995,134	2,698,399	1,800,437	1,214,399	5,164	935,413	13,944,065	14,879,478	11,130,623
1998	6,358,830	959,854	2,561,698	1,858,007	1,061,098	5,820	590,946	12,805,307	13,396,253	10,021,094
1999	6,952,682	1,010,230	2,476,635	2,149,715	1,177,193	11,689	-169,926	13,778,144	13,608,218	10,179,655
2000	7,165,382	1,040,910	2,638,474	2,218,201	1,110,604	16,084	491,626	14,189,655	14,681,281	10,982,362
2001	7,403,912	1,037,674	2,646,667	1,971,716	1,212,168	20,913	506,536	14,293,050	14,799,586	11,070,860
2002	7,645,750	1,094,964	2,689,662	2,109,293	1,302,562	27,977	656,799	14,870,208	15,527,007	11,615,009
2003	7,211,515	972,924	2,611,016	1,567,477	1,118,705	27,351	753,696	13,508,988	14,262,684	10,669,229
2004	7,493,474	985,959	2,610,367	1,337,322	1,191,319	32,015	678,049	13,650,456	14,328,505	10,718,467
2005	7,093,627	955,200	2,597,735	1,357,607	1,080,592	10,463	825,421	13,095,224	13,920,645	10,413,366
2006	6,980,688	882,012	2,626,592	1,358,513	1,100,345	25,890	914,989	12,974,040	13,889,029	10,389,716
2007	7,157,207	871,262	2,747,504	1,255,068	1,265,867	62,968	783,661	13,359,876	14,143,537	10,580,101
2008	6,772,221	863,341	2,809,171	1,224,303	1,273,843	24,750	925,435	12,967,629	13,893,064	10,392,734
2009	6,300,317	857,386	2,633,143	1,059,346	1,122,764	6,551	891,132	11,979,507	12,870,639	9,627,907
2010	5,923,816	801,047	2,471,623	923,156	955,082	16,145	765,188	11,090,869	11,856,057	8,868,947
5 Yr. Avg.	6,860,812	885,840	2,682,829	1,250,967	1,168,682	26,124	868,127	12,875,255	13,743,383	10,280,765
10 Yr. Avg.	7,122,409	956,163	2,661,033	1,545,885	1,177,877	25,496	742,734	13,488,863	14,231,598	10,645,975

Five year average = 2005 through 2009. Ten year average = 2000 through 2009.

Stockton District Historical Sales



California Water Service Company - Stockton District
Water Supply and Demand Analysis and Projections
Sales(AF)

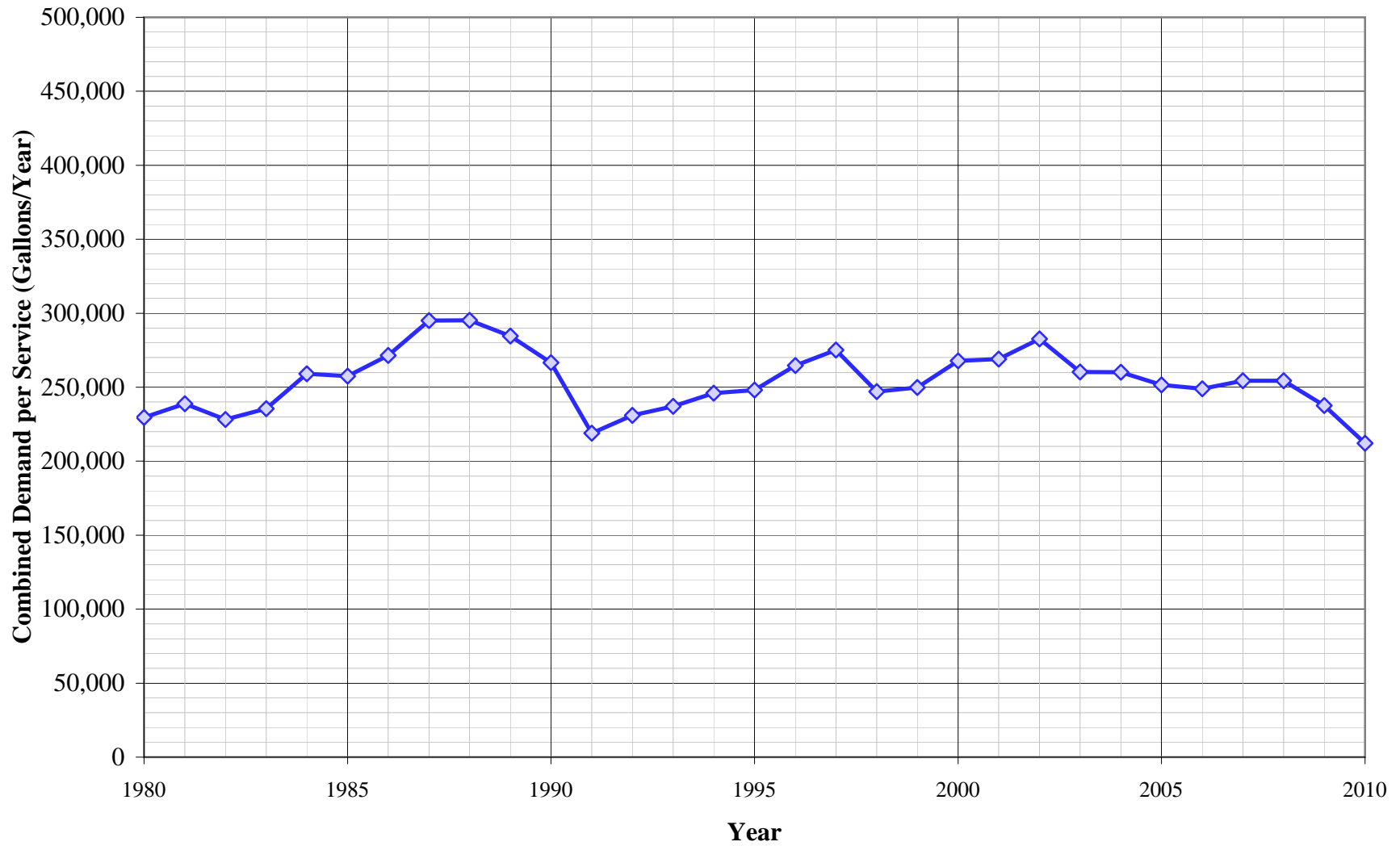
Worksheet 4

Year	Multi-						Unaccounted Water	Total(AF) Sales	Total(AF) Demand	Total(Mgal) Demand
	Residential	Residential	Commercial	Industrial	Government	Other				
1980	13,452	1,244	5,153	2,453	2,659	11	1,434	24,972	26,406	8,604
1981	13,964	1,424	5,321	3,166	2,772	9	919	26,655	27,574	8,985
1982	12,716	1,498	4,907	3,251	2,380	13	1,611	24,765	26,376	8,595
1983	13,091	1,743	5,399	3,391	2,466	16	1,191	26,106	27,297	8,895
1984	15,495	1,878	5,892	4,415	2,835	30	-388	30,544	30,157	9,827
1985	14,551	2,009	5,896	3,694	2,863	30	1,055	29,042	30,097	9,807
1986	14,622	2,120	6,107	3,802	2,945	45	2,158	29,642	31,800	10,362
1987	15,419	2,255	6,319	3,732	3,030	21	4,028	30,776	34,803	11,341
1988	15,113	2,285	6,208	4,899	3,232	47	3,125	31,784	34,909	11,375
1989	14,541	2,283	5,979	5,392	3,068	50	2,447	31,313	33,760	11,001
1990	14,771	2,305	6,014	4,033	2,816	63	1,890	30,003	31,893	10,392
1991	12,222	2,234	5,367	3,767	2,441	8	447	26,040	26,487	8,631
1992	13,217	2,281	5,172	3,621	2,457	1	1,433	26,749	28,182	9,183
1993	13,756	2,239	5,063	3,908	2,500	31	1,642	27,497	29,139	9,495
1994	14,360	2,229	5,239	4,335	2,545	13	1,574	28,720	30,294	9,871
1995	14,733	2,175	5,423	4,441	2,552	22	1,289	29,347	30,636	9,983
1996	15,682	2,291	5,973	3,887	2,589	23	2,373	30,445	32,818	10,694
1997	16,599	2,285	6,195	4,133	2,788	12	2,147	32,011	34,159	11,131
1998	14,598	2,204	5,881	4,265	2,436	13	1,357	29,397	30,754	10,021
1999	15,961	2,319	5,686	4,935	2,702	27	-390	31,630	31,240	10,180
2000	16,449	2,390	6,057	5,092	2,550	37	1,129	32,575	33,704	10,982
2001	16,997	2,382	6,076	4,526	2,783	48	1,163	32,812	33,975	11,071
2002	17,552	2,514	6,175	4,842	2,990	64	1,508	34,137	35,645	11,615
2003	16,555	2,234	5,994	3,598	2,568	63	1,730	31,012	32,743	10,669
2004	17,203	2,263	5,993	3,070	2,735	73	1,557	31,337	32,894	10,718
2005	16,285	2,193	5,964	3,117	2,481	24	1,895	30,062	31,957	10,413
2006	16,025	2,025	6,030	3,119	2,526	59	2,101	29,784	31,885	10,390
2007	16,431	2,000	6,307	2,881	2,906	145	1,799	30,670	32,469	10,580
2008	15,547	1,982	6,449	2,811	2,924	57	2,125	29,770	31,894	10,393
2009	14,464	1,968	6,045	2,432	2,578	15	2,046	27,501	29,547	9,628
2010	13,599	1,839	5,674	2,119	2,193	37	1,757	25,461	27,218	8,869
5 Yr. Avg.	15,750	2,034	6,159	2,872	2,683	60	1,993	29,558	32,220	10,499
10 Yr. Avg.	16,351	2,195	6,109	3,549	2,704	59	1,705	30,966	32,841	10,701

Five year average = 2005 through 2009. Ten year average = 2000 through 2009.

Stockton District

Historical Demand per Service



California Water Service Company - Stockton District
Water Supply and Demand Analysis and Projections
Demand per Service (Gallons per Year)

Year	Multi-Residential			Commercial	Industrial	Government	Total Other	Unaccounted/ Total Services	Combined Demand/Service
	Residential	(service)	(unit)						
1980	132,532	1,448,242	63,589	450,186	8,412,459	3,029,276	876,343	12,470	229,639
1981	137,085	1,645,155	71,573	462,576	10,526,252	3,124,950	759,647	7,963	238,878
1982	124,693	1,736,745	73,954	424,796	10,811,145	2,646,355	717,133	13,939	228,150
1983	128,280	1,972,208	78,976	461,018	11,391,035	2,733,011	890,431	10,276	235,596
1984	151,326	2,026,163	81,696	496,597	14,678,299	3,090,095	1,379,194	-3,331	259,017
1985	141,681	2,153,654	86,613	492,458	12,158,754	3,151,558	1,088,083	9,027	257,583
1986	142,074	2,242,711	90,889	507,769	12,642,842	3,264,191	1,645,714	18,426	271,509
1987	148,677	2,355,304	94,479	521,395	12,536,765	3,464,434	684,468	34,136	294,979
1988	145,252	2,356,293	93,753	516,859	16,288,687	3,774,552	842,182	26,432	295,236
1989	139,403	2,332,281	92,170	493,507	17,928,631	3,557,757	647,095	20,621	284,549
1990	140,463	2,354,539	98,531	490,807	13,275,830	3,276,860	763,013	15,798	266,579
1991	114,829	2,219,272	88,879	435,618	12,033,751	2,771,898	330,171	3,699	218,935
1992	122,934	2,218,343	88,470	421,458	11,130,619	2,750,950	210,577	11,741	230,923
1993	126,880	2,145,917	85,595	414,080	11,791,717	2,819,315	997,453	13,358	237,028
1994	132,088	2,124,021	85,001	431,535	13,984,351	2,909,586	370,830	12,785	246,050
1995	135,082	2,078,801	83,045	447,244	15,075,126	2,907,568	553,386	10,443	248,163
1996	142,919	2,221,432	86,811	498,168	13,473,157	2,909,409	463,465	19,143	264,710
1997	150,928	2,215,512	86,129	520,377	14,481,941	3,069,032	183,950	17,294	275,088
1998	132,308	2,130,625	83,637	495,164	15,107,455	2,672,581	189,290	10,896	247,001
1999	144,003	2,249,121	87,750	476,873	17,867,762	2,925,587	291,466	-3,119	249,752
2000	147,494	2,317,425	90,816	504,142	18,234,392	2,723,900	445,617	8,967	267,765
2001	151,894	2,298,818	89,832	504,162	16,208,199	3,002,532	601,693	9,209	269,058
2002	157,129	2,477,087	90,433	510,144	17,150,661	3,143,175	697,608	11,952	282,562
2003	148,773	2,227,384	80,423	491,994	12,745,155	2,682,210	584,571	13,753	260,249
2004	153,760	2,262,419	82,880	490,123	11,909,362	2,865,494	460,555	12,307	260,073
2005	144,849	2,194,082	78,928	486,946	11,808,845	2,624,477	217,413	14,922	251,650
2006	141,423	2,055,423	73,885	484,186	11,680,901	2,672,452	523,434	16,400	248,945
2007	145,204	2,043,101	75,785	518,355	10,916,932	3,104,703	1,239,562	14,097	254,421
2008	140,048	1,871,954	78,855	536,758	10,902,885	3,025,082	487,218	16,938	254,286
2009	131,537	1,762,004	78,311	505,837	9,433,880	2,584,264	213,065	16,451	237,609
2010	119,439	1,552,396	73,165	472,865	8,221,056	2,198,311	525,100	13,684	212,029
5 Yr. Avg.	140,612	1,985,313	77,153	506,416	10,948,688	2,802,196	536,138	15,762	249,382
10 Yr. Avg.	146,211	2,150,970	82,015	503,265	13,099,121	2,842,829	547,074	13,500	258,662

Five year average from years 2004 through 2008.

Ten year average from years 1999 through 2008.

California Water Service Company - Stockton District
Water Supply and Demand Analysis and Projections
Demand per Service (Gallons per Day)

Year	Multi-Residential			Commercial	Industrial	Government	Total Other	Unaccounted/ Total Services	Combined Demand/Service
	Residential	(service)	(unit)						
1980	363	3,968	174	1,233	23,048	8,299	2,401	34	629
1981	376	4,507	196	1,267	28,839	8,562	2,081	22	654
1982	342	4,758	203	1,164	29,620	7,250	1,965	38	625
1983	351	5,403	216	1,263	31,208	7,488	2,440	28	645
1984	415	5,551	224	1,361	40,215	8,466	3,779	-9	710
1985	388	5,900	237	1,349	33,312	8,634	2,981	25	706
1986	389	6,144	249	1,391	34,638	8,943	4,509	50	744
1987	407	6,453	259	1,428	34,347	9,492	1,875	94	808
1988	398	6,456	257	1,416	44,627	10,341	2,307	72	809
1989	382	6,390	253	1,352	49,120	9,747	1,773	56	780
1990	385	6,451	270	1,345	36,372	8,978	2,090	43	730
1991	315	6,080	244	1,193	32,969	7,594	905	10	600
1992	337	6,078	242	1,155	30,495	7,537	577	32	633
1993	348	5,879	235	1,134	32,306	7,724	2,733	37	649
1994	362	5,819	233	1,182	38,313	7,971	1,016	35	674
1995	370	5,695	228	1,225	41,302	7,966	1,516	29	680
1996	392	6,086	238	1,365	36,913	7,971	1,270	52	725
1997	414	6,070	236	1,426	39,677	8,408	504	47	754
1998	362	5,837	229	1,357	41,390	7,322	519	30	677
1999	395	6,162	240	1,307	48,953	8,015	799	-9	684
2000	404	6,349	249	1,381	49,957	7,463	1,221	25	734
2001	416	6,298	246	1,381	44,406	8,226	1,648	25	737
2002	430	6,787	248	1,398	46,988	8,611	1,911	33	774
2003	408	6,102	220	1,348	34,918	7,349	1,602	38	713
2004	421	6,198	227	1,343	32,628	7,851	1,262	34	713
2005	397	6,011	216	1,334	32,353	7,190	596	41	689
2006	387	5,631	202	1,327	32,002	7,322	1,434	45	682
2007	398	5,598	208	1,420	29,909	8,506	3,396	39	697
2008	384	5,129	216	1,471	29,871	8,288	1,335	46	697
2009	360	4,827	215	1,386	25,846	7,080	584	45	651
2010	327	4,253	200	1,296	22,523	6,023	1,439	37	581
5 Yr. Avg.	385	5,439	211	1,387	29,996	7,677	1,469	43	683
10 Yr. Avg.	401	5,893	225	1,379	35,888	7,789	1,499	37	709

Five year average from years 2005 through 2009.

Ten year average from years 2000 through 2009.

California Water Service Company - Stockton District
Water Supply and Demand Analysis and Projections
Percentage Change in Annual Demand

Worksheet 7

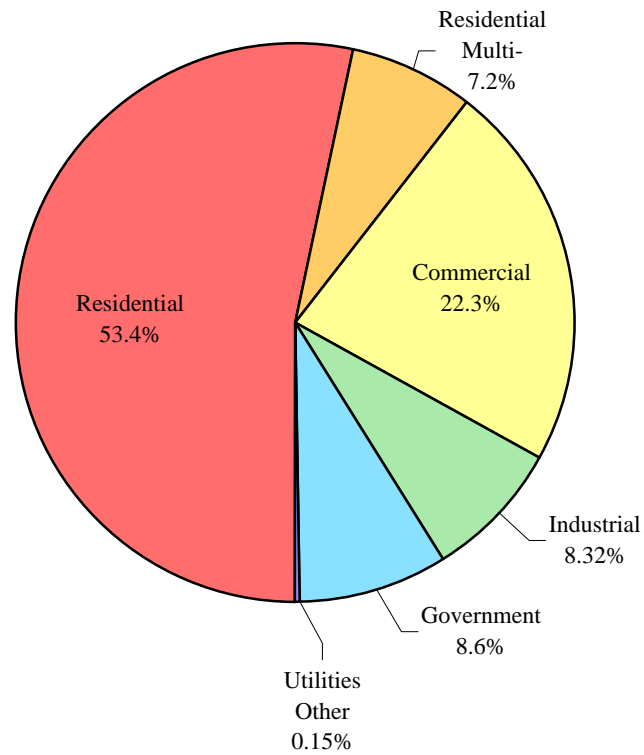
Year	Residential	Multi-Residential	Commercial	Industrial	Government	Other	Unaccounted Water	Total
1981	3.8%	14.4%	3.3%	29.1%	4.2%	-13.3%	-35.9%	4.4%
1982	-8.9%	5.2%	-7.8%	2.7%	-14.1%	41.6%	75.3%	-4.4%
1983	3.0%	16.4%	10.0%	4.3%	3.6%	24.2%	-26.1%	3.5%
1984	18.4%	7.7%	9.1%	30.2%	15.0%	80.7%	-132.6%	10.5%
1985	-6.1%	7.0%	0.1%	-16.3%	1.0%	1.4%	-371.9%	-0.2%
1986	0.5%	5.5%	3.6%	2.9%	2.9%	51.3%	104.6%	5.7%
1987	5.5%	6.4%	3.5%	-1.9%	2.9%	-53.8%	86.6%	9.4%
1988	-2.0%	1.3%	-1.8%	31.3%	6.7%	121.5%	-22.4%	0.3%
1989	-3.8%	-0.1%	-3.7%	10.1%	-5.1%	6.7%	-21.7%	-3.3%
1990	1.6%	1.0%	0.6%	-25.2%	-8.2%	27.4%	-22.8%	-5.5%
1991	-17.3%	-3.1%	-10.8%	-6.6%	-13.3%	-87.2%	-76.3%	-17.0%
1992	8.1%	2.1%	-3.6%	-3.9%	0.6%	-84.1%	220.2%	6.4%
1993	4.1%	-1.8%	-2.1%	7.9%	1.8%	2268.4%	14.6%	3.4%
1994	4.4%	-0.4%	3.5%	10.9%	1.8%	-59.1%	-4.2%	4.0%
1995	2.6%	-2.4%	3.5%	2.5%	0.3%	76.4%	-18.1%	1.1%
1996	6.4%	5.3%	10.2%	-12.5%	1.5%	3.1%	84.1%	7.1%
1997	5.9%	-0.3%	3.7%	6.3%	7.7%	-47.9%	-9.5%	4.1%
1998	-12.1%	-3.6%	-5.1%	3.2%	-12.6%	12.7%	-36.8%	-10.0%
1999	9.3%	5.3%	-3.3%	15.7%	10.9%	100.8%	-128.8%	1.6%
2000	3.1%	3.0%	6.5%	3.2%	-5.7%	37.6%	-389.3%	7.9%
2001	3.3%	-0.3%	0.3%	-11.1%	9.1%	30.0%	3.0%	0.8%
2002	3.3%	5.5%	1.6%	7.0%	7.5%	33.8%	29.7%	4.9%
2003	-5.7%	-11.2%	-2.9%	-25.7%	-14.1%	-2.2%	14.8%	-8.1%
2004	3.9%	1.3%	0.0%	-14.7%	6.5%	17.1%	-10.0%	0.5%
2005	-5.3%	-3.1%	-0.5%	1.5%	-9.3%	-67.3%	21.7%	-2.9%
2006	-1.6%	-7.7%	1.1%	0.1%	1.8%	147.4%	10.9%	-0.2%
2007	2.5%	-1.2%	4.6%	-7.6%	15.0%	143.2%	-14.4%	1.8%
2008	-5.4%	-0.9%	2.2%	-2.5%	0.6%	-60.7%	18.1%	-1.8%
2009	-7.0%	-0.7%	-6.3%	-13.5%	-11.9%	-73.5%	-3.7%	-7.4%
2010	-6.0%	-6.6%	-6.1%	-12.9%	-14.9%	146.5%	-14.1%	-7.9%
5 Yr. Avg.	-3.4%	-2.7%	0.2%	-4.4%	-0.7%	17.8%	6.5%	-2.1%
10 Yr. Avg.	-0.9%	-1.5%	0.7%	-6.3%	0.0%	20.5%	-31.9%	-0.4%

Five year average is from years 2005 through 2009.

Ten year average is from years 2000 through 2009.

Stockton District

Percent of Total Sales by Type of Use (2010)



California Water Service Company - Stockton District
Water Supply and Demand Analysis and Projections
Percentage of Total Sales

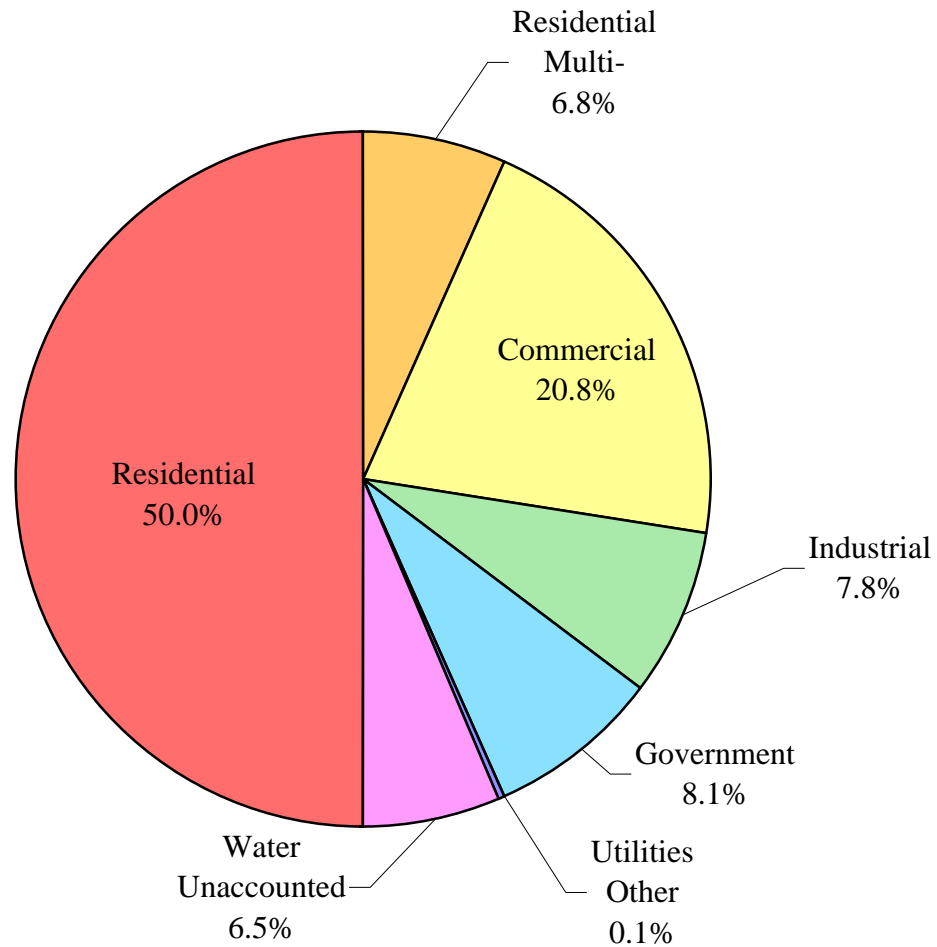
Year	Residential	Multi-Residential	Commercial	Industrial	Government	Other Utilities	Percent Total
1980	53.9%	5.0%	20.6%	9.8%	10.6%	0.0%	100.0%
1981	52.4%	5.3%	20.0%	11.9%	10.4%	0.0%	100.0%
1982	51.3%	6.0%	19.8%	13.1%	9.6%	0.1%	100.0%
1983	50.1%	6.7%	20.7%	13.0%	9.4%	0.1%	100.0%
1984	50.7%	6.1%	19.3%	14.5%	9.3%	0.1%	100.0%
1985	50.1%	6.9%	20.3%	12.7%	9.9%	0.1%	100.0%
1986	49.3%	7.2%	20.6%	12.8%	9.9%	0.2%	100.0%
1987	50.1%	7.3%	20.5%	12.1%	9.8%	0.1%	100.0%
1988	47.5%	7.2%	19.5%	15.4%	10.2%	0.1%	100.0%
1989	46.4%	7.3%	19.1%	17.2%	9.8%	0.2%	100.0%
1990	49.2%	7.7%	20.0%	13.4%	9.4%	0.2%	100.0%
1991	46.9%	8.6%	20.6%	14.5%	9.4%	0.0%	100.0%
1992	49.4%	8.5%	19.3%	13.5%	9.2%	0.0%	100.0%
1993	50.0%	8.1%	18.4%	14.2%	9.1%	0.1%	100.0%
1994	50.0%	7.8%	18.2%	15.1%	8.9%	0.0%	100.0%
1995	50.2%	7.4%	18.5%	15.1%	8.7%	0.1%	100.0%
1996	51.5%	7.5%	19.6%	12.8%	8.5%	0.1%	100.0%
1997	51.9%	7.1%	19.4%	12.9%	8.7%	0.0%	100.0%
1998	49.7%	7.5%	20.0%	14.5%	8.3%	0.0%	100.0%
1999	50.5%	7.3%	18.0%	15.6%	8.5%	0.1%	100.0%
2000	50.5%	7.3%	18.6%	15.6%	7.8%	0.1%	100.0%
2001	51.8%	7.3%	18.5%	13.8%	8.5%	0.1%	100.0%
2002	51.4%	7.4%	18.1%	14.2%	8.8%	0.2%	100.0%
2003	53.4%	7.2%	19.3%	11.6%	8.3%	0.2%	100.0%
2004	54.9%	7.2%	19.1%	9.8%	8.7%	0.2%	100.0%
2005	54.2%	7.3%	19.8%	10.4%	8.3%	0.1%	100.0%
2006	53.8%	6.8%	20.2%	10.5%	8.5%	0.2%	100.0%
2007	53.6%	6.5%	20.6%	9.4%	9.5%	0.5%	100.0%
2008	52.2%	6.7%	21.7%	9.4%	9.8%	0.2%	100.0%
2009	52.6%	7.2%	22.0%	8.8%	9.4%	0.1%	100.0%
2010	53.4%	7.2%	22.3%	8.3%	8.6%	0.1%	100.0%
5 Yr. Avg.	53.3%	6.9%	20.9%	9.7%	9.1%	0.2%	100.0%
10 Yr. Avg.	52.8%	7.1%	19.8%	11.4%	8.7%	0.2%	100.0%

Five year average is from years 2005 through 2009.

Ten year average is from years 2000 through 2009.

Stockton District

Percent of Total Demand by Type of Use (2010)



California Water Service Company - Stockton District
Water Supply and Demand Analysis and Projections
Percentage of Total Demand

Year	Residential	Multi-Residential	Commercial	Industrial	Government	Other Utilities	Unaccounted Water	Percent Total
1980	50.9%	4.7%	19.5%	9.3%	10.1%	0.0%	5.4%	100.0%
1981	50.6%	5.2%	19.3%	11.5%	10.1%	0.0%	3.3%	100.0%
1982	48.2%	5.7%	18.6%	12.3%	9.0%	0.1%	6.1%	100.0%
1983	48.0%	6.4%	19.8%	12.4%	9.0%	0.1%	4.4%	100.0%
1984	51.4%	6.2%	19.5%	14.6%	9.4%	0.1%	-1.3%	100.0%
1985	48.3%	6.7%	19.6%	12.3%	9.5%	0.1%	3.5%	100.0%
1986	46.0%	6.7%	19.2%	12.0%	9.3%	0.1%	6.8%	100.0%
1987	44.3%	6.5%	18.2%	10.7%	8.7%	0.1%	11.6%	100.0%
1988	43.3%	6.5%	17.8%	14.0%	9.3%	0.1%	9.0%	100.0%
1989	43.1%	6.8%	17.7%	16.0%	9.1%	0.1%	7.2%	100.0%
1990	46.3%	7.2%	18.9%	12.6%	8.8%	0.2%	5.9%	100.0%
1991	46.1%	8.4%	20.3%	14.2%	9.2%	0.0%	1.7%	100.0%
1992	46.9%	8.1%	18.4%	12.8%	8.7%	0.0%	5.1%	100.0%
1993	47.2%	7.7%	17.4%	13.4%	8.6%	0.1%	5.6%	100.0%
1994	47.4%	7.4%	17.3%	14.3%	8.4%	0.0%	5.2%	100.0%
1995	48.1%	7.1%	17.7%	14.5%	8.3%	0.1%	4.2%	100.0%
1996	47.8%	7.0%	18.2%	11.8%	7.9%	0.1%	7.2%	100.0%
1997	48.6%	6.7%	18.1%	12.1%	8.2%	0.0%	6.3%	100.0%
1998	47.5%	7.2%	19.1%	13.9%	7.9%	0.0%	4.4%	100.0%
1999	51.1%	7.4%	18.2%	15.8%	8.7%	0.1%	-1.2%	100.0%
2000	48.8%	7.1%	18.0%	15.1%	7.6%	0.1%	3.3%	100.0%
2001	50.0%	7.0%	17.9%	13.3%	8.2%	0.1%	3.4%	100.0%
2002	49.2%	7.1%	17.3%	13.6%	8.4%	0.2%	4.2%	100.0%
2003	50.6%	6.8%	18.3%	11.0%	7.8%	0.2%	5.3%	100.0%
2004	52.3%	6.9%	18.2%	9.3%	8.3%	0.2%	4.7%	100.0%
2005	51.0%	6.9%	18.7%	9.8%	7.8%	0.1%	5.9%	100.0%
2006	50.3%	6.4%	18.9%	9.8%	7.9%	0.2%	6.6%	100.0%
2007	50.6%	6.2%	19.4%	8.9%	9.0%	0.4%	5.5%	100.0%
2008	48.7%	6.2%	20.2%	8.8%	9.2%	0.2%	6.7%	100.0%
2009	49.0%	6.7%	20.5%	8.2%	8.7%	0.1%	6.9%	100.0%
2010	50.0%	6.8%	20.8%	7.8%	8.1%	0.1%	6.5%	100.0%
5 Yr. Avg.	49.9%	6.4%	19.5%	9.1%	8.5%	0.2%	6.3%	100.0%
10 Yr. Avg.	50.0%	6.7%	18.7%	10.8%	8.3%	0.2%	5.3%	100.0%

Five year average is from years 2005 through 2009.

Ten year average is from years 2000 through 2009.

**California Water Service Company - Stockton District
Water Supply and Demand Analysis and Projections**

Scenario #1: Based on Maintaining Growth at the 15-Year 20-Year Average Annual Growth Low Average High Demand per Service for each Customer Class.

Summary of Historical Growth Rate from Worksheet 2			
Customer Type	20 Yr. Avg. Historical Growth Rate	Individual Growth Rate Selected	Notes
Single Family Residential	0.266%	0.266%	Historical growth rate used
Multi Family Residential	0.690%	0.690%	Overall growth rate used
Commercial	-0.065%	0.238%	Historical growth rate used
Industrial	-0.720%	0.238%	Overall growth rate used
Government	0.741%	0.741%	Historical growth rate used
Other	19.363%	0.238%	Overall growth rate used
Overall	0.238%	3.231%	

Summary of Lowest Demand per Service from Worksheets 5 and 6									
Demand/Serv. Units	Multi-Residential						Total Other	Unaccounted Total Serv.	Combined Demand/Serv.
	Residential	(service)	(unit)	Commercial	Industrial	Government			
Gal/Service/Yr	119,439	1,448,242	73,165	472,865	8,221,056	2,198,311	525,100	13,684	212,029
AF/Service/Yr	0.367	4.444	0.225	1.451	25.229	6.746	1.611	0.042	0.651
Gal/Service/Day	327	3,968	200	1,296	22,523	6,023	1,439	37	581

California Water Service Company - Stockton District

Water Supply and Demand Analysis and Projections

Worksheet 10

30-year projection Summary

Scenario #1: Based on Maintaining Growth at the

-
- 15-Year
-
-
- 20-Year

Average Annual Growth

-
- Low
-
-
- Average

Demand per Service for each Customer Class.

Customer Type	Projected Services 2010	Projected Services 2015	Projected Services 2020	Projected Services 2025	Projected Services 2030	Projected Services 2035	Projected Services 2040	Services projected to be added from 2010 - 2040
Single Family Residential	37,101	37,597	38,100	38,609	39,125	39,649	40,179	3,078
Multi Family Residential	386	400	413	428	443	458	474	88
Commercial	3,910	3,957	4,004	4,052	4,100	4,149	4,198	288
Industrial	84	85	86	87	88	89	90	6
Government	325	337	350	363	377	391	406	81
Other	23	23	24	24	24	24	25	2
Total	41,829	42,399	42,977	43,563	44,157	44,760	45,372	3,543

Customer Type	Projected Demand 2010 (ccf)	Projected Demand 2015 (ccf)	Projected Demand 2020 (ccf)	Projected Demand 2025 (ccf)	Projected Demand 2030 (ccf)	Projected Demand 2035 (ccf)	Projected Demand 2040 (ccf)	Projected demand to be added from 2010 - 2040 (ccf)
Single Family Residential	5,923,792	6,002,998	6,083,264	6,164,603	6,247,030	6,330,558	6,415,204	491,412
Multi Family Residential	747,300	773,440	800,494	828,495	857,475	887,469	918,513	171,213
Commercial	2,471,613	2,501,103	2,530,945	2,561,143	2,591,702	2,622,625	2,653,916	182,304
Industrial	923,152	934,167	945,313	956,592	968,006	979,555	991,243	68,091
Government	955,078	990,992	1,028,256	1,066,922	1,107,042	1,148,670	1,191,864	236,786
Other	16,145	16,338	16,533	16,730	16,929	17,131	17,336	1,191
Unaccounted	765,185	775,607	786,178	796,900	807,776	818,808	829,998	64,813
Total	11,802,264	11,994,645	12,190,983	12,391,385	12,595,959	12,804,817	13,018,074	1,215,809

Customer Type	Projected Demand 2010 (AF)	Projected Demand 2015 (AF)	Projected Demand 2020 (AF)	Projected Demand 2025 (AF)	Projected Demand 2030 (AF)	Projected Demand 2035 (AF)	Projected Demand 2040 (AF)	Projected demand to be added from 2010 - 2040 (AF)
Single Family Residential	13,599	13,781	13,965	14,152	14,341	14,533	14,727	1,128
Multi Family Residential	1,716	1,776	1,838	1,902	1,969	2,037	2,109	393
Commercial	5,674	5,742	5,810	5,880	5,950	6,021	6,093	419
Industrial	2,119	2,145	2,170	2,196	2,222	2,249	2,276	156
Government	2,193	2,275	2,361	2,449	2,541	2,637	2,736	544
Other	37	38	38	38	39	39	40	3
Unaccounted	1,757	1,781	1,805	1,829	1,854	1,880	1,905	149
Total	27,094	27,536	27,987	28,447	28,917	29,396	29,886	2,791

California Water Service Company - Stockton District

Water Supply and Demand Analysis and Projections

Worksheet 10

2000's Projections

Scenario #1: Based on Maintaining Growth at the

- 15-Year
 20-Year

Average Annual Growth

- Low
 Average
 High

Demand per Service for each Customer Class.

Customer Type	Actual Services 2001	Actual Services 2002	Actual Services 2003	Actual Services 2004	Actual Services 2005	Actual Services 2006	Actual Services 2007	Actual Services 2008	Actual Services 2009	Actual Services 2010
Resident	36,463	36,399	36,261	36,456	36,634	36,924	36,872	36,173	35,830	37,101
Multi- Residential	338	331	327	326	326	321	319	345	364	386
Commercial	3,927	3,944	3,970	3,984	3,991	4,058	3,965	3,915	3,894	3,910
Industrial	91	92	92	84	86	87	86	84	84	84
Government	302	310	312	311	308	308	305	315	325	325
Other	26	30	35	52	36	37	38	38	23	23
Total	41,147	41,106	40,996	41,213	41,380	41,735	41,585	40,870	40,520	41,829

Customer Type	Demand 2001(ccf)	Demand 2002(ccf)	Demand 2003(ccf)	Demand 2004(ccf)	Demand 2005(ccf)	Demand 2006(ccf)	Demand 2007(ccf)	Demand 2008(ccf)	Demand 2009(ccf)	Demand 2010(ccf)
Resident	5,821,924	5,811,772	5,789,592	5,820,833	5,849,227	5,895,531	5,887,228	5,775,661	5,720,856	5,923,792
Multi- Residential	653,726	640,174	632,591	631,139	630,494	621,459	617,587	667,923	704,708	747,300
Commercial	2,482,359	2,493,105	2,509,488	2,518,443	2,522,604	2,565,168	2,506,380	2,474,774	2,461,499	2,471,613
Industrial	1,000,082	1,011,071	1,011,071	923,152	945,132	956,122	945,132	923,152	923,152	923,152
Government	887,488	910,998	916,875	913,936	905,120	905,120	896,304	925,691	955,078	955,078
Other	18,251	21,059	24,568	36,502	25,270	25,972	26,674	26,674	16,145	16,145
Unaccounted	752,703	751,960	749,949	753,921	756,977	763,465	760,721	747,646	741,239	765,185
Total	11,616,532	11,640,139	11,634,135	11,597,926	11,634,825	11,732,837	11,640,027	11,541,522	11,522,676	11,802,264

Customer Type	Demand 2001(AF)	Demand 2002(AF)	Demand 2003(AF)	Demand 2004(AF)	Demand 2005(AF)	Demand 2006(AF)	Demand 2007(AF)	Demand 2008(AF)	Demand 2009(AF)	Demand 2010(AF)
Resident	13,365	13,342	13,291	13,363	13,428	13,534	13,515	13,259	13,133	13,599
Multi- Residential	1,501	1,470	1,452	1,449	1,447	1,427	1,418	1,533	1,618	1,716
Commercial	5,699	5,723	5,761	5,782	5,791	5,889	5,754	5,681	5,651	5,674
Industrial	2,296	2,321	2,321	2,119	2,170	2,195	2,170	2,119	2,119	2,119
Government	2,037	2,091	2,105	2,098	2,078	2,078	2,058	2,125	2,193	2,193
Other	42	48	56	84	58	60	61	61	37	37
Unaccounted	1,728	1,726	1,722	1,731	1,738	1,753	1,746	1,716	1,702	1,757
Total	26,668	26,722	26,708	26,625	26,710	26,935	26,722	26,496	26,453	27,094

California Water Service Company - Stockton District

Water Supply and Demand Analysis and Projections

2010's Projections

Scenario #1: Based on Maintaining Growth at the

- 15-Year
 20-Year

Average Annual Growth

Low

Average

High

Demand per Service for each Customer Class.

Customer Type	Projected Services 2011	Projected Services 2012	Projected Services 2013	Projected Services 2014	Projected Services 2015	Projected Services 2016	Projected Services 2017	Projected Services 2018	Projected Services 2019	Projected Services 2020
Resident	37,200	37,299	37,398	37,497	37,597	37,697	37,797	37,898	37,999	38,100
Multi- Residential	389	391	394	397	400	402	405	408	411	413
Commercial	3,919	3,929	3,938	3,947	3,957	3,966	3,975	3,985	3,994	4,004
Industrial	84	84	85	85	85	85	85	86	86	86
Government	327	330	332	335	337	340	342	345	347	350
Other	23	23	23	23	23	23	23	23	23	24
Total	41,942	42,056	42,170	42,284	42,399	42,514	42,629	42,744	42,860	42,977

Customer Type	Demand 2011(ccf)	Demand 2012(ccf)	Demand 2013(ccf)	Demand 2014(ccf)	Demand 2015(ccf)	Demand 2016(ccf)	Demand 2017(ccf)	Demand 2018(ccf)	Demand 2019(ccf)	Demand 2020(ccf)
Resident	5,939,549	5,955,348	5,971,190	5,987,073	6,002,998	6,018,966	6,034,977	6,051,030	6,067,126	6,083,264
Multi- Residential	752,456	757,648	762,876	768,140	773,440	778,777	784,150	789,561	795,009	800,494
Commercial	2,477,483	2,483,367	2,489,265	2,495,177	2,501,103	2,507,043	2,512,997	2,518,966	2,524,948	2,530,945
Industrial	925,345	927,542	929,745	931,953	934,167	936,386	938,609	940,839	943,073	945,313
Government	962,155	969,285	976,467	983,703	990,992	998,335	1,005,733	1,013,185	1,020,693	1,028,256
Other	16,183	16,222	16,260	16,299	16,338	16,376	16,415	16,454	16,493	16,533
Unaccounted	767,257	769,336	771,420	773,511	775,607	777,709	779,817	781,931	784,052	786,178
Total	11,840,429	11,878,748	11,917,223	11,955,855	11,994,645	12,033,592	12,072,699	12,111,966	12,151,394	12,190,983

Customer Type	Demand 2011(AF)	Demand 2012(AF)	Demand 2013(AF)	Demand 2014(AF)	Demand 2015(AF)	Demand 2016(AF)	Demand 2017(AF)	Demand 2018(AF)	Demand 2019(AF)	Demand 2020(AF)
Resident	13,635	13,672	13,708	13,745	13,781	13,818	13,854	13,891	13,928	13,965
Multi- Residential	1,727	1,739	1,751	1,763	1,776	1,788	1,800	1,813	1,825	1,838
Commercial	5,688	5,701	5,715	5,728	5,742	5,755	5,769	5,783	5,797	5,810
Industrial	2,124	2,129	2,134	2,139	2,145	2,150	2,155	2,160	2,165	2,170
Government	2,209	2,225	2,242	2,258	2,275	2,292	2,309	2,326	2,343	2,361
Other	37	37	37	37	38	38	38	38	38	38
Unaccounted	1,761	1,766	1,771	1,776	1,781	1,785	1,790	1,795	1,800	1,805
Total	27,182	27,270	27,358	27,447	27,536	27,626	27,715	27,805	27,896	27,987

**California Water Service Company - Stockton District
Water Supply and Demand Analysis and Projections**

2020's Projections

Scenario #1: Based on Maintaining Growth at the

- 15-Year
 20-Year

Average Annual Growth

- Low

- Average
 High

Demand per Service for each Customer Class.

Customer Type	Projected Services 2021	Projected Services 2022	Projected Services 2023	Projected Services 2024	Projected Services 2025	Projected Services 2026	Projected Services 2027	Projected Services 2028	Projected Services 2029	Projected Services 2030
Resident	38,201	38,303	38,405	38,507	38,609	38,712	38,815	38,918	39,022	39,125
Multi- Residential	416	419	422	425	428	431	434	437	440	443
Commercial	4,013	4,023	4,032	4,042	4,052	4,061	4,071	4,081	4,090	4,100
Industrial	86	86	87	87	87	87	87	88	88	88
Government	352	355	358	360	363	366	368	371	374	377
Other	24	24	24	24	24	24	24	24	24	24
Total	43,093	43,210	43,327	43,445	43,563	43,681	43,800	43,918	44,038	44,157

Customer Type	Demand 2021 (ccf)	Demand 2022 (ccf)	Demand 2023 (ccf)	Demand 2024 (ccf)	Demand 2025 (ccf)	Demand 2026 (ccf)	Demand 2027 (ccf)	Demand 2028 (ccf)	Demand 2029 (ccf)	Demand 2030 (ccf)
Resident	6,099,446	6,115,670	6,131,938	6,148,249	6,164,603	6,181,001	6,197,443	6,213,928	6,230,457	6,247,030
Multi- Residential	806,018	811,579	817,179	822,818	828,495	834,212	839,968	845,764	851,599	857,475
Commercial	2,536,956	2,542,981	2,549,021	2,555,075	2,561,143	2,567,226	2,573,323	2,579,435	2,585,561	2,591,702
Industrial	947,558	949,808	952,064	954,325	956,592	958,864	961,141	963,424	965,712	968,006
Government	1,035,876	1,043,552	1,051,284	1,059,074	1,066,922	1,074,828	1,082,793	1,090,816	1,098,899	1,107,042
Other	16,572	16,611	16,651	16,690	16,730	16,769	16,809	16,849	16,889	16,929
Unaccounted	788,310	790,448	792,593	794,743	796,900	799,063	801,232	803,407	805,588	807,776
Total	12,230,735	12,270,651	12,310,730	12,350,975	12,391,385	12,431,963	12,472,708	12,513,622	12,554,705	12,595,959

Customer Type	Demand 2021(AF)	Demand 2022(AF)	Demand 2023(AF)	Demand 2024(AF)	Demand 2025(AF)	Demand 2026(AF)	Demand 2027(AF)	Demand 2028(AF)	Demand 2029(AF)	Demand 2030(AF)
Resident	14,002	14,040	14,077	14,115	14,152	14,190	14,227	14,265	14,303	14,341
Multi- Residential	1,850	1,863	1,876	1,889	1,902	1,915	1,928	1,942	1,955	1,969
Commercial	5,824	5,838	5,852	5,866	5,880	5,894	5,908	5,922	5,936	5,950
Industrial	2,175	2,180	2,186	2,191	2,196	2,201	2,206	2,212	2,217	2,222
Government	2,378	2,396	2,413	2,431	2,449	2,467	2,486	2,504	2,523	2,541
Other	38	38	38	38	38	38	39	39	39	39
Unaccounted	1,810	1,815	1,820	1,824	1,829	1,834	1,839	1,844	1,849	1,854
Total	28,078	28,170	28,262	28,354	28,447	28,540	28,634	28,728	28,822	28,917

California Water Service Company - Stockton District

Water Supply and Demand Analysis and Projections

2030's Projections

Scenario #1: Based on Maintaining Growth at the

- 15-Year
 20-Year

Average Annual Growth

- Low
 Average
 High

Demand per Service for each Customer Class.

Customer Type	Projected Services 2031	Projected Services 2032	Projected Services 2033	Projected Services 2034	Projected Services 2035	Projected Services 2036	Projected Services 2037	Projected Services 2038	Projected Services 2039	Projected Services 2040
Resident	39,230	39,334	39,439	39,543	39,649	39,754	39,860	39,966	40,072	40,179
Multi- Residential	446	449	452	455	458	462	465	468	471	474
Commercial	4,110	4,119	4,129	4,139	4,149	4,159	4,169	4,179	4,188	4,198
Industrial	88	89	89	89	89	89	90	90	90	90
Government	380	382	385	388	391	394	397	400	403	406
Other	24	24	24	24	24	24	25	25	25	25
Total	44,277	44,397	44,518	44,639	44,760	44,882	45,004	45,126	45,249	45,372

Customer Type	Demand 2031(ccf)	Demand 2032(ccf)	Demand 2033(ccf)	Demand 2034(ccf)	Demand 2035(ccf)	Demand 2036(ccf)	Demand 2037(ccf)	Demand 2038(ccf)	Demand 2039(ccf)	Demand 2040(ccf)
Resident	6,263,647	6,280,308	6,297,014	6,313,764	6,330,558	6,347,398	6,364,282	6,381,211	6,398,185	6,415,204
Multi- Residential	863,392	869,349	875,348	881,388	887,469	893,593	899,759	905,967	912,218	918,513
Commercial	2,597,857	2,604,027	2,610,211	2,616,411	2,622,625	2,628,853	2,635,097	2,641,355	2,647,628	2,653,916
Industrial	970,305	972,609	974,919	977,234	979,555	981,882	984,214	986,551	988,894	991,243
Government	1,115,245	1,123,509	1,131,834	1,140,221	1,148,670	1,157,182	1,165,756	1,174,395	1,183,097	1,191,864
Other	16,970	17,010	17,050	17,091	17,131	17,172	17,213	17,254	17,295	17,336
Unaccounted	809,970	812,170	814,376	816,589	818,808	821,033	823,265	825,503	827,747	829,998
Total	12,637,384	12,678,982	12,720,752	12,762,697	12,804,817	12,847,113	12,889,585	12,932,235	12,975,065	13,018,074

Customer Type	Demand 2031(AF)	Demand 2032(AF)	Demand 2033(AF)	Demand 2034(AF)	Demand 2035(AF)	Demand 2036(AF)	Demand 2037(AF)	Demand 2038(AF)	Demand 2039(AF)	Demand 2040(AF)
Resident	14,379	14,418	14,456	14,495	14,533	14,572	14,610	14,649	14,688	14,727
Multi- Residential	1,982	1,996	2,010	2,023	2,037	2,051	2,066	2,080	2,094	2,109
Commercial	5,964	5,978	5,992	6,006	6,021	6,035	6,049	6,064	6,078	6,093
Industrial	2,228	2,233	2,238	2,243	2,249	2,254	2,259	2,265	2,270	2,276
Government	2,560	2,579	2,598	2,618	2,637	2,657	2,676	2,696	2,716	2,736
Other	39	39	39	39	39	39	40	40	40	40
Unaccounted	1,859	1,864	1,870	1,875	1,880	1,885	1,890	1,895	1,900	1,905
Total	29,012	29,107	29,203	29,299	29,396	29,493	29,591	29,689	29,787	29,886

California Water Service Company - Stockton District

Water Supply and Demand Analysis and Projections

Worksheet 11

Scenario #2: Based on Maintaining Growth at the 15-Year 20-Year Average Annual Growth Low Average High Demand per Service for each Customer Class.

Summary of Historical Growth Rate from Worksheet 2			
Customer Type	20 Yr. Avg. Historical Growth Rate	Individual Growth Rate Selected	Notes
Single Family Residential	0.266%	0.266%	Historical growth rate used
Multi Family Residential	0.690%	0.690%	Overall growth rate used
Commercial	-0.065%	0.238%	Historical growth rate used
Industrial	-0.720%	0.238%	Overall growth rate used
Government	0.741%	0.741%	Historical growth rate used
Other	19.363%	0.238%	Overall growth rate used
Overall	0.238%	3.231%	

Summary of Average Demand per Service from Worksheets 5 and 6									
Demand/Serv. Units	Multi-Residential						Total Other	Unaccounted Total Serv.	Combined Demand/Serv.
	Residential	(service)	(unit)	Commercial	Industrial	Government			
Gal/Service/Yr	145,204	2,043,101	75,785	518,355	10,916,932	3,104,703	1,239,562	14,097	254,421
AF/Service/Yr	0.446	6.270	0.233	1.591	33.503	9.528	3.804	0.043	0.781
Gal/Service/Day	398	5,598	208	1,420	29,909	8,506	3,396	39	697

California Water Service Company - Stockton District

Water Supply and Demand Analysis and Projections

Worksheet 11

30-year projection Summary

Scenario #2: Based on Maintaining Growth at the 15-Year 20-Year Average Annual Growth Low Average High Demand per Service for each Customer Class.

Customer Type	Projected Services 2010	Projected Services 2015	Projected Services 2020	Projected Services 2025	Projected Services 2030	Projected Services 2035	Projected Services 2040	Services projected to be added from 2010 - 2040
Single Family Residential	37,101	37,597	38,100	38,609	39,125	39,649	40,179	3,078
Multi Family Residential	386	400	413	428	443	458	474	88
Commercial	3,910	3,957	4,004	4,052	4,100	4,149	4,198	288
Industrial	84	85	86	87	88	89	90	6
Government	325	337	350	363	377	391	406	81
Other	23	23	24	24	24	24	25	2
Total	41,829	42,399	42,977	43,563	44,157	44,760	45,372	3,543

Customer Type	Projected Demand 2010 (ccf)	Projected Demand 2015 (ccf)	Projected Demand 2020 (ccf)	Projected Demand 2025 (ccf)	Projected Demand 2030 (ccf)	Projected Demand 2035 (ccf)	Projected Demand 2040 (ccf)	Projected demand to be added from 2010 - 2040 (ccf)
Single Family Residential	7,201,629	7,297,921	7,395,501	7,494,386	7,594,593	7,696,140	7,799,045	597,416
Multi Family Residential	1,054,250	1,091,127	1,129,294	1,168,796	1,209,680	1,251,994	1,295,788	241,538
Commercial	2,709,381	2,741,708	2,774,421	2,807,524	2,841,022	2,874,920	2,909,222	199,841
Industrial	1,225,875	1,240,502	1,255,303	1,270,281	1,285,437	1,300,774	1,316,295	90,419
Government	1,348,869	1,399,591	1,452,220	1,506,828	1,563,490	1,622,282	1,683,285	334,415
Other	38,112	38,567	39,027	39,493	39,964	40,441	40,923	2,811
Unaccounted	788,256	798,992	809,882	820,927	832,131	843,495	855,023	66,768
Total	14,366,372	14,608,408	14,855,648	15,108,235	15,366,317	15,630,046	15,899,580	1,533,208

Customer Type	Projected Demand 2010 (AF)	Projected Demand 2015 (AF)	Projected Demand 2020 (AF)	Projected Demand 2025 (AF)	Projected Demand 2030 (AF)	Projected Demand 2035 (AF)	Projected Demand 2040 (AF)	Projected demand to be added from 2010 - 2040 (AF)
Single Family Residential	16,533	16,754	16,978	17,205	17,435	17,668	17,904	1,371
Multi Family Residential	2,420	2,505	2,593	2,683	2,777	2,874	2,975	554
Commercial	6,220	6,294	6,369	6,445	6,522	6,600	6,679	459
Industrial	2,814	2,848	2,882	2,916	2,951	2,986	3,022	208
Government	3,097	3,213	3,334	3,459	3,589	3,724	3,864	768
Other	87	89	90	91	92	93	94	6
Unaccounted	1,810	1,834	1,859	1,885	1,910	1,936	1,963	153
Total	32,981	33,537	34,104	34,684	35,276	35,882	36,501	3,520

California Water Service Company - Stockton District

Water Supply and Demand Analysis and Projections

2000's Projections

Scenario #2: Based on Maintaining Growth at the 15-Year Average Annual Growth 20-Year Average Annual Growth Low Demand per Service for each Customer Class. Average High

Customer Type	Actual Services 2001	Actual Services 2002	Actual Services 2003	Actual Services 2004	Actual Services 2005	Actual Services 2006	Actual Services 2007	Actual Services 2008	Actual Services 2009	Actual Services 2010
Resident	36,463	36,399	36,261	36,456	36,634	36,924	36,872	36,173	35,830	37,101
Multi- Residential	338	331	327	326	326	321	319	345	364	386
Commercial	3,927	3,944	3,970	3,984	3,991	4,058	3,965	3,915	3,894	3,910
Industrial	91	92	92	84	86	87	86	84	84	84
Government	302	310	312	311	308	308	305	315	325	325
Other	26	30	35	52	36	37	38	38	23	23
Total	41,147	41,106	40,996	41,213	41,380	41,735	41,585	40,870	40,520	41,829

Customer Type	Demand 2001(ccf)	Demand 2002(ccf)	Demand 2003(ccf)	Demand 2004(ccf)	Demand 2005(ccf)	Demand 2006(ccf)	Demand 2007(ccf)	Demand 2008(ccf)	Demand 2009(ccf)	Demand 2010(ccf)
Resident	7,077,787	7,065,445	7,038,480	7,076,461	7,110,980	7,167,271	7,157,178	7,021,544	6,954,916	7,201,629
Multi- Residential	922,241	903,123	903,123	890,377	889,467	876,721	871,258	942,270	994,163	1,054,250
Commercial	2,721,161	2,732,941	2,750,900	2,760,716	2,765,278	2,811,936	2,747,493	2,712,846	2,698,294	2,709,381
Industrial	1,328,032	1,342,625	1,342,625	1,225,875	1,255,063	1,269,657	1,255,063	1,225,875	1,225,875	1,225,875
Government	1,253,411	1,286,614	1,294,914	1,290,764	1,278,313	1,278,313	1,265,862	1,307,365	1,348,869	1,348,869
Other	43,083	49,711	57,997	86,166	59,654	61,311	62,968	62,968	38,112	38,112
Unaccounted	775,397	774,633	772,561	776,652	779,801	786,484	783,658	770,188	763,588	788,256
Total	14,121,113	14,155,092	14,160,600	14,107,012	14,138,555	14,251,693	14,143,479	14,043,057	14,023,818	14,366,372

Customer Type	Demand 2001(AF)	Demand 2002(AF)	Demand 2003(AF)	Demand 2004(AF)	Demand 2005(AF)	Demand 2006(AF)	Demand 2007(AF)	Demand 2008(AF)	Demand 2009(AF)	Demand 2010(AF)
Resident	16,248	16,220	16,158	16,245	16,325	16,454	16,431	16,119	15,966	16,533
Multi- Residential	2,117	2,073	2,073	2,044	2,042	2,013	2,000	2,163	2,282	2,420
Commercial	6,247	6,274	6,315	6,338	6,348	6,455	6,307	6,228	6,194	6,220
Industrial	3,049	3,082	3,082	2,814	2,881	2,915	2,881	2,814	2,814	2,814
Government	2,877	2,954	2,973	2,963	2,935	2,935	2,906	3,001	3,097	3,097
Other	99	114	133	198	137	141	145	145	87	87
Unaccounted	1,780	1,778	1,774	1,783	1,790	1,806	1,799	1,768	1,753	1,810
Total	32,418	32,496	32,508	32,385	32,458	32,718	32,469	32,239	32,194	32,981

California Water Service Company - Stockton District

Water Supply and Demand Analysis and Projections

Worksheet 11

2010's Projections

Scenario #2: Based on Maintaining Growth at the

- 15-Year
 20-Year

Average Annual Growth

- Low
 Average
 High

Demand per Service for each Customer Class.

Customer Type	Projected Services 2011	Projected Services 2012	Projected Services 2013	Projected Services 2014	Projected Services 2015	Projected Services 2016	Projected Services 2017	Projected Services 2018	Projected Services 2019	Projected Services 2020
Resident	37,200	37,299	37,398	37,497	37,597	37,697	37,797	37,898	37,999	38,100
Multi- Residential	389	391	394	397	400	402	405	408	411	413
Commercial	3,919	3,929	3,938	3,947	3,957	3,966	3,975	3,985	3,994	4,004
Industrial	84	84	85	85	85	85	85	86	86	86
Government	327	330	332	335	337	340	342	345	347	350
Other	23	23	23	23	23	23	23	23	23	24
Total	41,942	42,056	42,170	42,284	42,399	42,514	42,629	42,744	42,860	42,977

Customer Type	Demand 2011(ccf)	Demand 2012(ccf)	Demand 2013(ccf)	Demand 2014(ccf)	Demand 2015(ccf)	Demand 2016(ccf)	Demand 2017(ccf)	Demand 2018(ccf)	Demand 2019(ccf)	Demand 2020(ccf)
Resident	7,220,785	7,239,992	7,259,251	7,278,560	7,297,921	7,317,334	7,336,798	7,356,314	7,375,881	7,395,501
Multi- Residential	1,061,524	1,068,849	1,068,849	1,083,650	1,091,127	1,098,656	1,106,237	1,113,870	1,121,555	1,129,294
Commercial	2,715,816	2,722,266	2,728,731	2,735,212	2,741,708	2,748,220	2,754,747	2,761,289	2,767,848	2,774,421
Industrial	1,228,787	1,231,705	1,234,630	1,237,563	1,240,502	1,243,448	1,246,401	1,249,362	1,252,329	1,255,303
Government	1,358,864	1,368,933	1,379,077	1,389,296	1,399,591	1,409,962	1,420,410	1,430,935	1,441,538	1,452,220
Other	38,203	38,293	38,384	38,475	38,567	38,658	38,750	38,842	38,934	39,027
Unaccounted	790,391	792,532	794,679	796,833	798,992	801,158	803,329	805,507	807,691	809,882
Total	14,414,370	14,462,571	14,503,602	14,559,589	14,608,408	14,657,435	14,706,672	14,756,119	14,805,777	14,855,648

Customer Type	Demand 2011(AF)	Demand 2012(AF)	Demand 2013(AF)	Demand 2014(AF)	Demand 2015(AF)	Demand 2016(AF)	Demand 2017(AF)	Demand 2018(AF)	Demand 2019(AF)	Demand 2020(AF)
Resident	16,577	16,621	16,665	16,709	16,754	16,798	16,843	16,888	16,933	16,978
Multi- Residential	2,437	2,454	2,454	2,488	2,505	2,522	2,540	2,557	2,575	2,593
Commercial	6,235	6,250	6,264	6,279	6,294	6,309	6,324	6,339	6,354	6,369
Industrial	2,821	2,828	2,834	2,841	2,848	2,855	2,861	2,868	2,875	2,882
Government	3,120	3,143	3,166	3,189	3,213	3,237	3,261	3,285	3,309	3,334
Other	88	88	88	88	89	89	89	89	89	90
Unaccounted	1,815	1,819	1,824	1,829	1,834	1,839	1,844	1,849	1,854	1,859
Total	33,091	33,202	33,296	33,424	33,537	33,649	33,762	33,876	33,990	34,104

California Water Service Company - Stockton District
Water Supply and Demand Analysis and Projections

2020's Projections

Scenario #2: Based on Maintaining Growth at the 15-Year Average Annual Growth Average Demand per Service for each Customer Class.
 20-Year High

Customer Type	Projected Services 2021	Projected Services 2022	Projected Services 2023	Projected Services 2024	Projected Services 2025	Projected Services 2026	Projected Services 2027	Projected Services 2028	Projected Services 2029	Projected Services 2030
Resident	38,201	38,303	38,405	38,507	38,609	38,712	38,815	38,918	39,022	39,125
Multi- Residential	416	419	422	425	428	431	434	437	440	443
Commercial	4,013	4,023	4,032	4,042	4,052	4,061	4,071	4,081	4,090	4,100
Industrial	86	86	87	87	87	87	87	88	88	88
Government	352	355	358	360	363	366	368	371	374	377
Other	24	24	24	24	24	24	24	24	24	24
Total	43,093	43,210	43,327	43,445	43,563	43,681	43,800	43,918	44,038	44,157

Customer Type	Demand 2021 (ccf)	Demand 2022 (ccf)	Demand 2023 (ccf)	Demand 2024 (ccf)	Demand 2025 (ccf)	Demand 2026 (ccf)	Demand 2027 (ccf)	Demand 2028 (ccf)	Demand 2029 (ccf)	Demand 2030 (ccf)
Resident	7,415,173	7,434,898	7,454,675	7,474,504	7,494,386	7,514,321	7,534,309	7,554,351	7,574,445	7,594,593
Multi- Residential	1,137,086	1,144,932	1,144,932	1,160,787	1,168,796	1,176,861	1,184,981	1,193,157	1,201,390	1,209,680
Commercial	2,781,010	2,787,615	2,794,236	2,800,872	2,807,524	2,814,192	2,820,876	2,827,575	2,834,291	2,841,022
Industrial	1,258,284	1,261,273	1,264,268	1,267,271	1,270,281	1,273,298	1,276,322	1,279,353	1,282,391	1,285,437
Government	1,462,981	1,473,822	1,484,743	1,495,745	1,506,828	1,517,994	1,529,242	1,540,574	1,551,989	1,563,490
Other	39,120	39,213	39,306	39,399	39,493	39,586	39,680	39,775	39,869	39,964
Unaccounted	812,078	814,281	816,490	818,706	820,927	823,155	825,390	827,630	829,877	832,131
Total	14,905,733	14,956,033	14,998,649	15,057,283	15,108,235	15,159,407	15,210,800	15,262,415	15,314,254	15,366,317

Customer Type	Demand 2021(AF)	Demand 2022(AF)	Demand 2023(AF)	Demand 2024(AF)	Demand 2025(AF)	Demand 2026(AF)	Demand 2027(AF)	Demand 2028(AF)	Demand 2029(AF)	Demand 2030(AF)
Resident	17,023	17,068	17,114	17,159	17,205	17,251	17,297	17,343	17,389	17,435
Multi- Residential	2,610	2,628	2,628	2,665	2,683	2,702	2,720	2,739	2,758	2,777
Commercial	6,384	6,400	6,415	6,430	6,445	6,461	6,476	6,491	6,507	6,522
Industrial	2,889	2,896	2,902	2,909	2,916	2,923	2,930	2,937	2,944	2,951
Government	3,359	3,383	3,409	3,434	3,459	3,485	3,511	3,537	3,563	3,589
Other	90	90	90	90	91	91	91	91	92	92
Unaccounted	1,864	1,869	1,874	1,880	1,885	1,890	1,895	1,900	1,905	1,910
Total	34,219	34,335	34,432	34,567	34,684	34,801	34,919	35,038	35,157	35,276

California Water Service Company - Stockton District

Water Supply and Demand Analysis and Projections

2030's Projections

Scenario #2: Based on Maintaining Growth at the 15-Year Average Annual Growth 20-Year Average Annual Growth Low Demand per Service for each Customer Class. Average High

Customer Type	Projected Services 2031	Projected Services 2032	Projected Services 2033	Projected Services 2034	Projected Services 2035	Projected Services 2036	Projected Services 2037	Projected Services 2038	Projected Services 2039	Projected Services 2040
Resident	39,230	39,334	39,439	39,543	39,649	39,754	39,860	39,966	40,072	40,179
Multi- Residential	446	449	452	455	458	462	465	468	471	474
Commercial	4,110	4,119	4,129	4,139	4,149	4,159	4,169	4,179	4,188	4,198
Industrial	88	89	89	89	89	89	90	90	90	90
Government	380	382	385	388	391	394	397	400	403	406
Other	24	24	24	24	24	24	25	25	25	25
Total	44,277	44,397	44,518	44,639	44,760	44,882	45,004	45,126	45,249	45,372

Customer Type	Demand 2031(ccf)	Demand 2032(ccf)	Demand 2033(ccf)	Demand 2034(ccf)	Demand 2035(ccf)	Demand 2036(ccf)	Demand 2037(ccf)	Demand 2038(ccf)	Demand 2039(ccf)	Demand 2040(ccf)
Resident	7,614,795	7,635,050	7,655,359	7,675,723	7,696,140	7,716,612	7,737,138	7,757,719	7,778,354	7,799,045
Multi- Residential	1,218,027	1,226,431	1,226,431	1,243,414	1,251,994	1,260,632	1,269,331	1,278,089	1,286,908	1,295,788
Commercial	2,847,770	2,854,533	2,861,313	2,868,108	2,874,920	2,881,748	2,888,592	2,895,453	2,902,329	2,909,222
Industrial	1,288,490	1,291,550	1,294,618	1,297,692	1,300,774	1,303,864	1,306,960	1,310,064	1,313,176	1,316,295
Government	1,575,075	1,586,746	1,598,504	1,610,349	1,622,282	1,634,303	1,646,413	1,658,613	1,670,903	1,683,285
Other	40,059	40,154	40,249	40,345	40,441	40,537	40,633	40,729	40,826	40,923
Unaccounted	834,391	836,657	838,930	841,210	843,495	845,788	848,087	850,392	852,705	855,023
Total	15,418,606	15,471,122	15,515,404	15,576,841	15,630,046	15,683,483	15,737,154	15,791,060	15,845,201	15,899,580

Customer Type	Demand 2031(AF)	Demand 2032(AF)	Demand 2033(AF)	Demand 2034(AF)	Demand 2035(AF)	Demand 2036(AF)	Demand 2037(AF)	Demand 2038(AF)	Demand 2039(AF)	Demand 2040(AF)
Resident	17,481	17,528	17,574	17,621	17,668	17,715	17,762	17,809	17,857	17,904
Multi- Residential	2,796	2,816	2,816	2,855	2,874	2,894	2,914	2,934	2,954	2,975
Commercial	6,538	6,553	6,569	6,584	6,600	6,616	6,631	6,647	6,663	6,679
Industrial	2,958	2,965	2,972	2,979	2,986	2,993	3,000	3,008	3,015	3,022
Government	3,616	3,643	3,670	3,697	3,724	3,752	3,780	3,808	3,836	3,864
Other	92	92	92	93	93	93	93	94	94	94
Unaccounted	1,916	1,921	1,926	1,931	1,936	1,942	1,947	1,952	1,958	1,963
Total	35,396	35,517	35,619	35,760	35,882	36,005	36,128	36,252	36,376	36,501

California Water Service Company - Stockton District

Water Supply and Demand Analysis and Projections

Worksheet 12

Scenario #3: Based on Maintaining Growth at the 15-Year 20-Year Average Annual Growth Low Average High Demand per Service for each Customer Class.

Summary of Historical Growth Rate from Worksheet 2			
Customer Type	20 Yr. Avg. Historical Growth Rate	Individual Growth Rate Selected	Notes
Single Family Residential	0.266%	0.266%	Historical growth rate used
Multi Family Residential	0.690%	0.690%	Overall growth rate used
Commercial	-0.065%	0.238%	Historical growth rate used
Industrial	-0.720%	0.238%	Overall growth rate used
Government	0.741%	0.741%	Historical growth rate used
Other	19.363%	0.238%	Overall growth rate used
Overall	0.238%	3.231%	

Summary of Maximum Demand per Service from Worksheets 5 and 6									
Demand/Serv. Units	Multi-Residential			Commercial	Industrial	Government	Total Other	Unaccounted Total Serv.	Combined Demand/Serv.
	Residential	(service)	(unit)						
Gal/Service/Yr	157,129	2,356,293	93,753	516,859	16,288,687	3,774,552	1,645,714	26,432	295,236
AF/Service/Yr	0.482	7.231	0.288	1.586	49.988	11.584	5.051	0.081	0.906
Gal/Service/Day	430	6,456	257	1,416	44,627	10,341	4,509	72	809

California Water Service Company - Stockton District
Water Supply and Demand Analysis and Projections

30-year projection Summary

Scenario #3: Based on Maintaining Growth at the

- 15-Year
 20-Year

Average Annual Growth

- Low
 Average
 High

Demand per Service for each Customer Class.

Customer Type	Projected Services 2010	Projected Services 2015	Projected Services 2020	Projected Services 2025	Projected Services 2030	Projected Services 2035	Projected Services 2040	Services projected to be added from 2010 - 2040
Single Family Residential	37,101	37,597	38,100	38,609	39,125	39,649	40,179	3,078
Multi Family Residential	386	400	413	428	443	458	474	88
Commercial	3,910	3,957	4,004	4,052	4,100	4,149	4,198	288
Industrial	84	85	86	87	88	89	90	6
Government	325	337	350	363	377	391	406	81
Other	23	23	24	24	24	24	25	2
Total	41,829	42,399	42,977	43,563	44,157	44,760	45,372	3,543

Customer Type	Projected Demand 2010 (ccf)	Projected Demand 2015 (ccf)	Projected Demand 2020 (ccf)	Projected Demand 2025 (ccf)	Projected Demand 2030 (ccf)	Projected Demand 2035 (ccf)	Projected Demand 2040 (ccf)	Projected demand to be added from 2010 - 2040 (ccf)
Single Family Residential	7,793,087	7,897,288	8,002,882	8,109,888	8,218,325	8,328,212	8,439,568	646,481
Multi Family Residential	1,215,858	1,258,388	1,302,406	1,347,963	1,395,114	1,443,915	1,494,422	278,564
Commercial	2,701,562	2,733,796	2,766,414	2,799,422	2,832,823	2,866,623	2,900,827	199,264
Industrial	1,829,076	1,850,900	1,872,984	1,895,332	1,917,946	1,940,830	1,963,987	134,911
Government	1,639,892	1,701,557	1,765,541	1,831,931	1,900,817	1,972,294	2,046,459	406,567
Other	50,600	51,204	51,814	52,433	53,058	53,691	54,332	3,732
Unaccounted	1,477,988	1,498,119	1,518,537	1,539,247	1,560,255	1,581,563	1,603,178	125,190
Total	16,708,063	16,991,252	17,280,579	17,576,216	17,878,339	18,187,128	18,502,772	1,794,708

Customer Type	Projected Demand 2010 (AF)	Projected Demand 2015 (AF)	Projected Demand 2020 (AF)	Projected Demand 2025 (AF)	Projected Demand 2030 (AF)	Projected Demand 2035 (AF)	Projected Demand 2040 (AF)	Projected demand to be added from 2010 - 2040 (AF)
Single Family Residential	17,891	18,130	18,372	18,618	18,867	19,119	19,375	1,484
Multi Family Residential	2,791	2,889	2,990	3,095	3,203	3,315	3,431	639
Commercial	6,202	6,276	6,351	6,427	6,503	6,581	6,659	457
Industrial	4,199	4,249	4,300	4,351	4,403	4,456	4,509	310
Government	3,765	3,906	4,053	4,206	4,364	4,528	4,698	933
Other	116	118	119	120	122	123	125	9
Unaccounted	3,393	3,439	3,486	3,534	3,582	3,631	3,680	287
Total	38,357	39,007	39,671	40,350	41,043	41,752	42,477	4,120

California Water Service Company - Stockton District
Water Supply and Demand Analysis and Projections

2000's Projections

Scenario #3: Based on Maintaining Growth at the

- 15-Year
 20-Year

Average Annual Growth

- Low
 Average
 High

Demand per Service for each Customer Class.

Customer Type	Actual Services 2001	Actual Services 2002	Actual Services 2003	Actual Services 2004	Actual Services 2005	Actual Services 2006	Actual Services 2007	Actual Services 2008	Actual Services 2009	Actual Services 2010
Resident	36,463	36,399	36,261	36,456	36,634	36,924	36,872	36,173	35,830	37,101
Multi- Residential	338	331	327	326	326	321	319	345	364	386
Commercial	3,927	3,944	3,970	3,984	3,991	4,058	3,965	3,915	3,894	3,910
Industrial	91	92	92	84	86	87	86	84	84	84
Government	302	310	312	311	308	308	305	315	325	325
Other	26	30	35	52	36	37	38	38	23	23
Total	41,147	41,106	40,996	41,213	41,380	41,735	41,585	40,870	40,520	41,829

Customer Type	Demand 2001(ccf)	Demand 2002(ccf)	Demand 2003(ccf)	Demand 2004(ccf)	Demand 2005(ccf)	Demand 2006(ccf)	Demand 2007(ccf)	Demand 2008(ccf)	Demand 2009(ccf)	Demand 2010(ccf)
Resident	7,659,074	7,645,719	7,616,539	7,657,639	7,694,993	7,755,908	7,744,985	7,598,212	7,526,112	7,793,087
Multi- Residential	1,063,614	1,041,564	1,041,564	1,026,865	1,025,815	1,011,115	1,004,816	1,086,713	1,146,561	1,215,858
Commercial	2,713,308	2,725,054	2,742,961	2,752,749	2,757,298	2,803,821	2,739,564	2,705,017	2,690,507	2,701,562
Industrial	1,981,499	2,003,274	2,003,274	1,829,076	1,872,626	1,894,400	1,872,626	1,829,076	1,829,076	1,829,076
Government	1,523,838	1,564,205	1,574,296	1,569,251	1,554,113	1,554,113	1,538,976	1,589,434	1,639,892	1,639,892
Other	57,200	66,000	77,000	114,400	79,200	81,400	83,600	83,600	50,600	50,600
Unaccounted	1,453,878	1,452,444	1,448,561	1,456,231	1,462,135	1,474,667	1,469,367	1,444,112	1,431,736	1,477,988
Total	16,452,412	16,498,260	16,504,195	16,406,211	16,446,179	16,575,424	16,453,932	16,336,163	16,314,484	16,708,063

Customer Type	Demand 2001(AF)	Demand 2002(AF)	Demand 2003(AF)	Demand 2004(AF)	Demand 2005(AF)	Demand 2006(AF)	Demand 2007(AF)	Demand 2008(AF)	Demand 2009(AF)	Demand 2010(AF)
Resident	17,583	17,552	17,485	17,580	17,665	17,805	17,780	17,443	17,278	17,891
Multi- Residential	2,442	2,391	2,391	2,357	2,355	2,321	2,307	2,495	2,632	2,791
Commercial	6,229	6,256	6,297	6,319	6,330	6,437	6,289	6,210	6,177	6,202
Industrial	4,549	4,599	4,599	4,199	4,299	4,349	4,299	4,199	4,199	4,199
Government	3,498	3,591	3,614	3,603	3,568	3,568	3,533	3,649	3,765	3,765
Other	131	152	177	263	182	187	192	192	116	116
Unaccounted	3,338	3,334	3,325	3,343	3,357	3,385	3,373	3,315	3,287	3,393
Total	37,770	37,875	37,889	37,664	37,755	38,052	37,773	37,503	37,453	38,357

California Water Service Company - Stockton District
Water Supply and Demand Analysis and Projections

2010's Projections

Scenario #3: Based on Maintaining Growth at the

- 15-Year
- 20-Year

Average Annual Growth

- Low
- Average
- High

Demand per Service for each Customer Class.

Customer Type	Projected Services 2011	Projected Services 2012	Projected Services 2013	Projected Services 2014	Projected Services 2015	Projected Services 2016	Projected Services 2017	Projected Services 2018	Projected Services 2019	Projected Services 2020
Resident	37,200	37,299	37,398	37,497	37,597	37,697	37,797	37,898	37,999	38,100
Multi- Residential	389	391	394	397	400	402	405	408	411	413
Commercial	3,919	3,929	3,938	3,947	3,957	3,966	3,975	3,985	3,994	4,004
Industrial	84	84	85	85	85	85	85	86	86	86
Government	327	330	332	335	337	340	342	345	347	350
Other	23	23	23	23	23	23	23	23	23	24
Total	41,942	42,056	42,170	42,284	42,399	42,514	42,629	42,744	42,860	42,977

Customer Type	Demand 2011(ccf)	Demand 2012(ccf)	Demand 2013(ccf)	Demand 2014(ccf)	Demand 2015(ccf)	Demand 2016(ccf)	Demand 2017(ccf)	Demand 2018(ccf)	Demand 2019(ccf)	Demand 2020(ccf)
Resident	7,813,816	7,834,601	7,855,441	7,876,337	7,897,288	7,918,294	7,939,357	7,960,476	7,981,651	8,002,882
Multi- Residential	1,224,248	1,232,695	1,232,695	1,249,765	1,258,388	1,267,071	1,275,814	1,284,617	1,293,481	1,302,406
Commercial	2,707,978	2,714,410	2,720,857	2,727,319	2,733,796	2,740,289	2,746,797	2,753,321	2,759,860	2,766,414
Industrial	1,833,420	1,837,775	1,842,139	1,846,514	1,850,900	1,855,296	1,859,702	1,864,119	1,868,546	1,872,984
Government	1,652,044	1,664,285	1,676,618	1,689,041	1,701,557	1,714,166	1,726,868	1,739,664	1,752,555	1,765,541
Other	50,720	50,840	50,961	51,082	51,204	51,325	51,447	51,569	51,692	51,814
Unaccounted	1,481,991	1,486,006	1,490,032	1,494,070	1,498,119	1,502,179	1,506,251	1,510,335	1,514,430	1,518,537
Total	16,764,218	16,820,613	16,868,743	16,934,128	16,991,252	17,048,621	17,106,236	17,164,101	17,222,214	17,280,579

Customer Type	Demand 2011(AF)	Demand 2012(AF)	Demand 2013(AF)	Demand 2014(AF)	Demand 2015(AF)	Demand 2016(AF)	Demand 2017(AF)	Demand 2018(AF)	Demand 2019(AF)	Demand 2020(AF)
Resident	17,938	17,986	18,034	18,082	18,130	18,178	18,226	18,275	18,323	18,372
Multi- Residential	2,811	2,830	2,830	2,869	2,889	2,909	2,929	2,949	2,969	2,990
Commercial	6,217	6,231	6,246	6,261	6,276	6,291	6,306	6,321	6,336	6,351
Industrial	4,209	4,219	4,229	4,239	4,249	4,259	4,269	4,279	4,290	4,300
Government	3,793	3,821	3,849	3,878	3,906	3,935	3,964	3,994	4,023	4,053
Other	116	117	117	117	118	118	118	118	119	119
Unaccounted	3,402	3,411	3,421	3,430	3,439	3,449	3,458	3,467	3,477	3,486
Total	38,486	38,615	38,726	38,876	39,007	39,139	39,271	39,404	39,537	39,671

California Water Service Company - Stockton District
Water Supply and Demand Analysis and Projections

Scenario #3: Based on Maintaining Growth at the

- 15-Year
- 20-Year

Average Annual Growth

- Low
- Average
- High

2020's Projections

Demand per Service for each Customer Class.

Customer Type	Projected Services 2021	Projected Services 2022	Projected Services 2023	Projected Services 2024	Projected Services 2025	Projected Services 2026	Projected Services 2027	Projected Services 2028	Projected Services 2029	Projected Services 2030
Resident	38,201	38,303	38,405	38,507	38,609	38,712	38,815	38,918	39,022	39,125
Multi- Residential	416	419	422	425	428	431	434	437	440	443
Commercial	4,013	4,023	4,032	4,042	4,052	4,061	4,071	4,081	4,090	4,100
Industrial	86	86	87	87	87	87	87	88	88	88
Government	352	355	358	360	363	366	368	371	374	377
Other	24	24	24	24	24	24	24	24	24	24
Total	43,093	43,210	43,327	43,445	43,563	43,681	43,800	43,918	44,038	44,157

Customer Type	Demand 2021 (ccf)	Demand 2022 (ccf)	Demand 2023 (ccf)	Demand 2024 (ccf)	Demand 2025 (ccf)	Demand 2026 (ccf)	Demand 2027 (ccf)	Demand 2028 (ccf)	Demand 2029 (ccf)	Demand 2030 (ccf)
Resident	8,024,170	8,045,514	8,066,915	8,088,373	8,109,888	8,131,460	8,153,090	8,174,777	8,196,522	8,218,325
Multi- Residential	1,311,393	1,320,441	1,320,441	1,338,726	1,347,963	1,357,264	1,366,629	1,376,059	1,385,554	1,395,114
Commercial	2,772,985	2,779,570	2,786,172	2,792,789	2,799,422	2,806,071	2,812,735	2,819,415	2,826,111	2,832,823
Industrial	1,877,432	1,881,891	1,886,361	1,890,841	1,895,332	1,899,833	1,904,345	1,908,868	1,913,402	1,917,946
Government	1,778,624	1,791,803	1,805,081	1,818,456	1,831,931	1,845,506	1,859,181	1,872,957	1,886,836	1,900,817
Other	51,938	52,061	52,185	52,308	52,433	52,557	52,682	52,807	52,933	53,058
Unaccounted	1,522,656	1,526,786	1,530,928	1,535,082	1,539,247	1,543,425	1,547,614	1,551,816	1,556,029	1,560,255
Total	17,339,196	17,398,067	17,448,082	17,516,576	17,576,216	17,636,116	17,696,277	17,756,700	17,817,387	17,878,339

Customer Type	Demand 2021(AF)	Demand 2022(AF)	Demand 2023(AF)	Demand 2024(AF)	Demand 2025(AF)	Demand 2026(AF)	Demand 2027(AF)	Demand 2028(AF)	Demand 2029(AF)	Demand 2030(AF)
Resident	18,421	18,470	18,519	18,568	18,618	18,667	18,717	18,767	18,817	18,867
Multi- Residential	3,011	3,031	3,031	3,073	3,095	3,116	3,137	3,159	3,181	3,203
Commercial	6,366	6,381	6,396	6,411	6,427	6,442	6,457	6,473	6,488	6,503
Industrial	4,310	4,320	4,331	4,341	4,351	4,361	4,372	4,382	4,393	4,403
Government	4,083	4,113	4,144	4,175	4,206	4,237	4,268	4,300	4,332	4,364
Other	119	120	120	120	120	121	121	121	122	122
Unaccounted	3,496	3,505	3,515	3,524	3,534	3,543	3,553	3,563	3,572	3,582
Total	39,806	39,941	40,056	40,213	40,350	40,487	40,625	40,764	40,903	41,043

California Water Service Company - Stockton District
Water Supply and Demand Analysis and Projections

2030's Projections

Scenario #3: Based on Maintaining Growth at the

- 15-Year
- 20-Year

Average Annual Growth

- Low
- Average
- High

Demand per Service for each Customer Class.

Customer Type	Projected Services 2031	Projected Services 2032	Projected Services 2033	Projected Services 2034	Projected Services 2035	Projected Services 2036	Projected Services 2037	Projected Services 2038	Projected Services 2039	Projected Services 2040
Resident	39,230	39,334	39,439	39,543	39,649	39,754	39,860	39,966	40,072	40,179
Multi- Residential	446	449	452	455	458	462	465	468	471	474
Commercial	4,110	4,119	4,129	4,139	4,149	4,159	4,169	4,179	4,188	4,198
Industrial	88	89	89	89	89	89	90	90	90	90
Government	380	382	385	388	391	394	397	400	403	406
Other	24	24	24	24	24	24	25	25	25	25
Total	44,277	44,397	44,518	44,639	44,760	44,882	45,004	45,126	45,249	45,372

Customer Type	Demand 2031(ccf)	Demand 2032(ccf)	Demand 2033(ccf)	Demand 2034(ccf)	Demand 2035(ccf)	Demand 2036(ccf)	Demand 2037(ccf)	Demand 2038(ccf)	Demand 2039(ccf)	Demand 2040(ccf)
Resident	8,240,186	8,262,104	8,284,082	8,306,117	8,328,212	8,350,365	8,372,577	8,394,848	8,417,178	8,439,568
Multi- Residential	1,404,741	1,414,433	1,414,433	1,434,020	1,443,915	1,453,878	1,463,909	1,474,010	1,484,181	1,494,422
Commercial	2,839,551	2,846,295	2,853,055	2,859,831	2,866,623	2,873,432	2,880,256	2,887,097	2,893,953	2,900,827
Industrial	1,922,501	1,927,067	1,931,644	1,936,231	1,940,830	1,945,439	1,950,060	1,954,691	1,959,334	1,963,987
Government	1,914,903	1,929,092	1,943,387	1,957,787	1,972,294	1,986,909	2,001,632	2,016,464	2,031,406	2,046,459
Other	53,184	53,311	53,437	53,564	53,691	53,819	53,947	54,075	54,203	54,332
Unaccounted	1,564,492	1,568,742	1,573,003	1,577,277	1,581,563	1,585,861	1,590,172	1,594,495	1,598,830	1,603,178
Total	17,939,557	18,001,044	18,053,041	18,124,828	18,187,128	18,249,702	18,312,552	18,375,680	18,439,086	18,502,772

Customer Type	Demand 2031(AF)	Demand 2032(AF)	Demand 2033(AF)	Demand 2034(AF)	Demand 2035(AF)	Demand 2036(AF)	Demand 2037(AF)	Demand 2038(AF)	Demand 2039(AF)	Demand 2040(AF)
Resident	18,917	18,967	19,018	19,068	19,119	19,170	19,221	19,272	19,323	19,375
Multi- Residential	3,225	3,247	3,247	3,292	3,315	3,338	3,361	3,384	3,407	3,431
Commercial	6,519	6,534	6,550	6,565	6,581	6,597	6,612	6,628	6,644	6,659
Industrial	4,413	4,424	4,434	4,445	4,456	4,466	4,477	4,487	4,498	4,509
Government	4,396	4,429	4,461	4,494	4,528	4,561	4,595	4,629	4,663	4,698
Other	122	122	123	123	123	124	124	124	124	125
Unaccounted	3,592	3,601	3,611	3,621	3,631	3,641	3,651	3,660	3,670	3,680
Total	41,184	41,325	41,444	41,609	41,752	41,896	42,040	42,185	42,331	42,477

California Water Service Company - Stockton District
Water Supply and Demand Analysis and Projections

Scenario #4: Based on Maintaining Growth at the 15-Year 20-Year Average Annual Growth

Summary of Historical Growth Rate from Worksheet 2			
Customer Type	15 Yr. Avg. Historical Growth Rate	Individual Growth Rate Selected	Notes
Single Family Residential	0.079%	0.079%	Historical growth rate used
Multi Family Residential	0.451%	0.451%	Historical growth rate used
Commercial	-0.100%	0.069%	Overall growth rate used
Industrial	-1.185%	0.069%	Overall growth rate used
Government	0.891%	0.891%	Historical growth rate used
Other	7.641%	0.069%	Overall growth rate used
Overall	0.069%	3.231%	

California Water Service Company - Stockton District
Water Supply and Demand Analysis and Projections

30-year projection Summary

Scenario #4: Based on Maintaining Growth at the 15-Year 20-Year Average Annual Growth

Customer Type	Projected Services 2010	Projected Services 2015	Projected Services 2020	Projected Services 2025	Projected Services 2030	Projected Services 2035	Projected Services 2040	Services projected to be added from 2010 - 2040
Single Family Residential	37,101	37,247	37,394	37,541	37,689	37,838	37,987	886
Multi Family Residential	386	395	404	413	422	432	442	56
Commercial	3,910	3,923	3,937	3,950	3,964	3,978	3,991	81
Industrial	84	84	85	85	85	85	86	2
Government	325	340	355	368	385	402	421	96
Other	23	23	23	23	24	24	24	1
Total	41,829	42,012	42,197	42,381	42,569	42,759	42,950	1,121

California Water Service Company - Stockton District Water Supply and Demand Analysis and Projections

Worksheet 13

2000's Projections

Scenario #4: Based on Maintaining Growth at the 15-Year 20-Year Average Annual Growth

Customer Type	Actual Services 2001	Actual Services 2002	Actual Services 2003	Actual Services 2004	Actual Services 2005	Actual Services 2006	Actual Services 2007	Actual Services 2008	Actual Services 2009	Actual Services 2010
Resident	36,463	36,399	36,261	36,456	36,634	36,924	36,872	36,173	35,830	37,101
Multi- Residential	338	331	327	326	326	321	319	345	364	386
Commercial	3,927	3,944	3,970	3,984	3,991	4,058	3,965	3,915	3,894	3,910
Industrial	91	92	92	84	86	87	86	84	84	84
Government	302	310	312	311	308	308	305	315	325	325
Other	26	30	35	52	36	37	38	38	23	23
Total	41,147	41,106	40,996	41,213	41,380	41,735	41,585	40,870	40,520	41,829

2010's Projections

Customer Type	Projected Services 2011	Projected Services 2012	Projected Services 2013	Projected Services 2014	Projected Services 2015	Projected Services 2016	Projected Services 2017	Projected Services 2018	Projected Services 2019	Projected Services 2020
Resident	37,130	37,159	37,189	37,218	37,247	37,276	37,306	37,335	37,365	37,394
Multi- Residential	388	389	391	393	395	397	398	400	402	404
Commercial	3,913	3,915	3,918	3,921	3,923	3,926	3,929	3,932	3,934	3,937
Industrial	84	84	84	84	84	84	84	84	85	85
Government	328	331	334	337	340	343	346	349	352	355
Other	23	23	23	23	23	23	23	23	23	23
Total	41,866	41,902	41,939	41,976	42,012	42,049	42,086	42,123	42,160	42,197

California Water Service Company - Stockton District

Water Supply and Demand Analysis and Projections

Worksheet 13

2020's Projections

Scenario #4: Based on Maintaining Growth at the 15-Year 20-Year Average Annual Growth

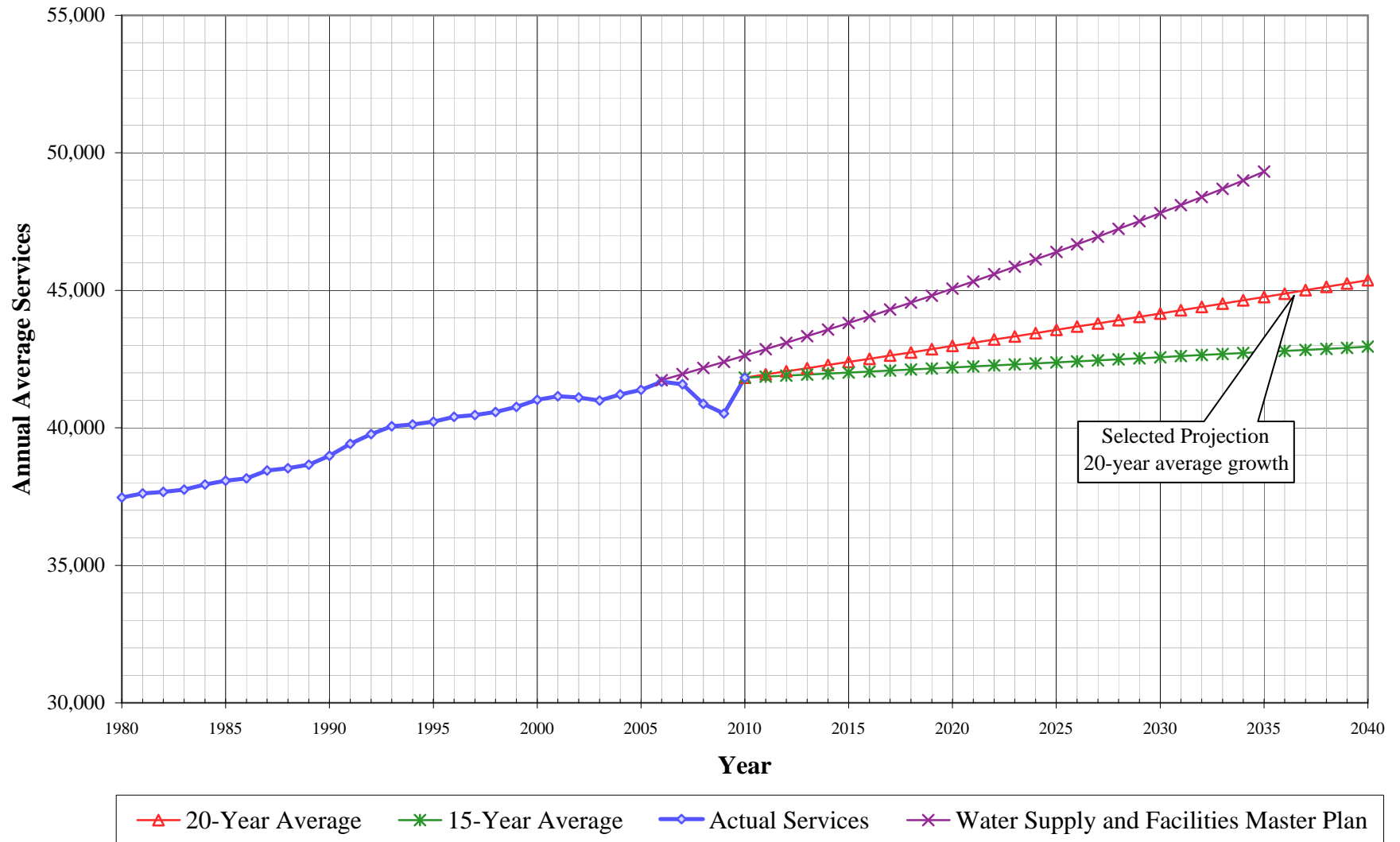
Customer Type	Projected Services 2021	Projected Services 2022	Projected Services 2023	Projected Services 2024	Projected Services 2025	Projected Services 2026	Projected Services 2027	Projected Services 2028	Projected Services 2029	Projected Services 2030
Resident	37,423	37,453	37,482	37,512	37,541	37,571	37,600	37,630	37,659	37,689
Multi- Residential	406	407	409	411	413	415	417	419	420	422
Commercial	3,940	3,942	3,945	3,948	3,950	3,953	3,956	3,959	3,961	3,964
Industrial	85	85	85	85	85	85	85	85	85	85
Government	355	359	362	365	368	371	375	378	382	385
Other	23	23	23	23	23	23	23	23	23	24
Total	42,232	42,269	42,306	42,344	42,381	42,419	42,456	42,494	42,531	42,569

2030's Projections

Customer Type	Projected Services 2031	Projected Services 2032	Projected Services 2033	Projected Services 2034	Projected Services 2035	Projected Services 2036	Projected Services 2037	Projected Services 2038	Projected Services 2039	Projected Services 2040
Resident	37,719	37,748	37,778	37,808	37,838	37,867	37,897	37,927	37,957	37,987
Multi- Residential	424	426	428	430	432	434	436	438	440	442
Commercial	3,967	3,969	3,972	3,975	3,978	3,980	3,983	3,986	3,989	3,991
Industrial	85	85	85	85	85	86	86	86	86	86
Government	388	392	395	399	402	406	410	413	417	421
Other	24	24	24	24	24	24	24	24	24	24
Total	42,607	42,645	42,683	42,721	42,759	42,797	42,835	42,873	42,911	42,950

Stockton District

Historical & Projected Annual Average Services



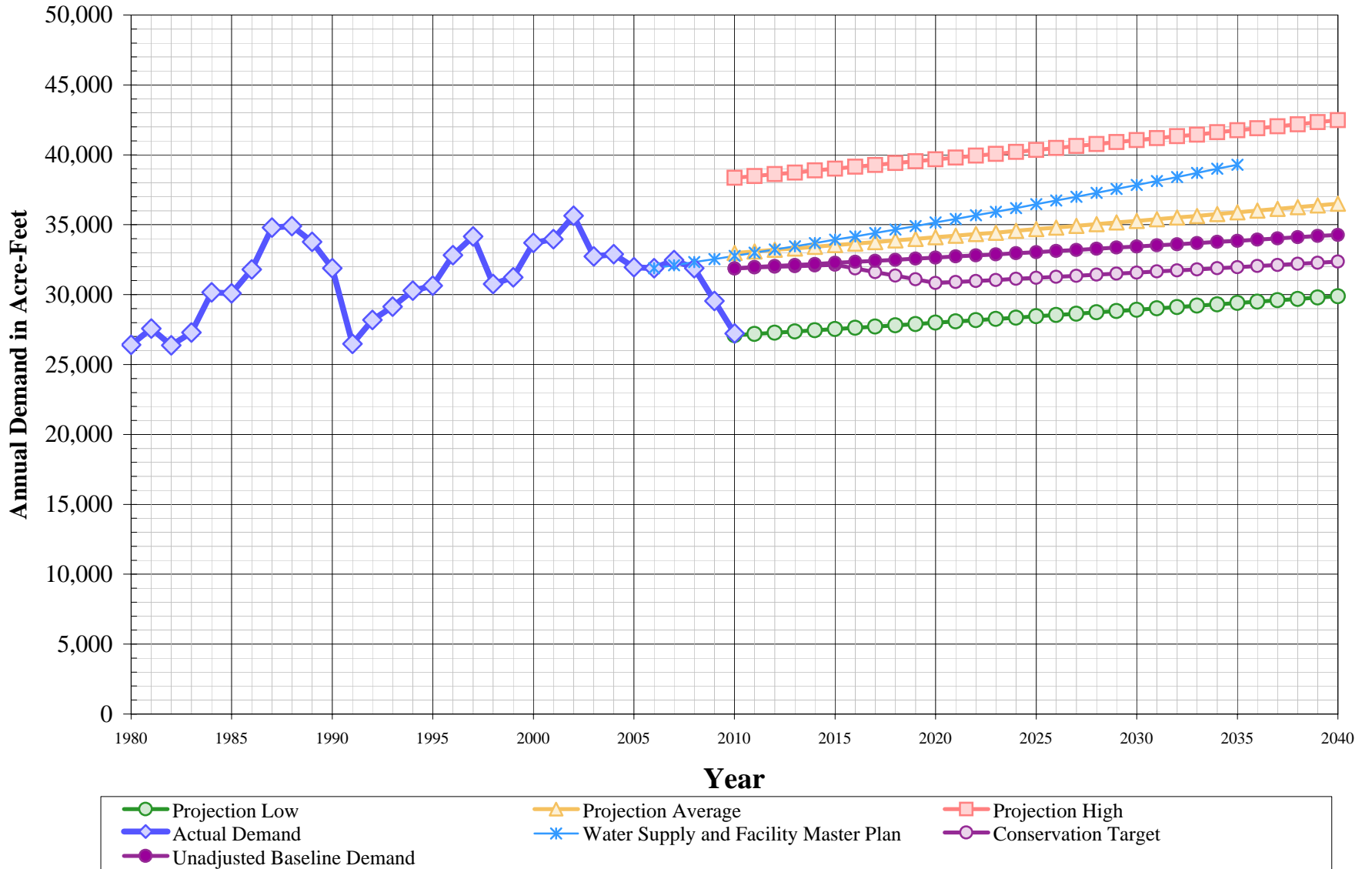
California Water Service Company - Stockton District
Water Supply and Demand Analysis and Projections
Projected Annual Average Services

Year	Actual Services	Projected Services		
		20-Year Average	15-Year Average	WS&FMP
1980	37,469			
1981	37,614			
1982	37,671			
1983	37,754			
1984	37,938			
1985	38,074			
1986	38,165			
1987	38,446			
1988	38,529			
1989	38,660			
1990	38,984			
1991	39,422			
1992	39,767			
1993	40,059			
1994	40,119			
1995	40,227			
1996	40,398			
1997	40,462			
1998	40,571			
1999	40,759			
2000	41,015			
2001	41,147			
2002	41,106			
2003	40,996			
2004	41,213			
2005	41,380			
2006	41,679			41,735
2007	41,585			41,955
2008	40,870			42,177
2009	40,520			42,402
2010	41,829	41,829	41,829	42,630

Year	Actual Services	Projected Services		
		Ten Year Average	Five Year Average	WS&FMP
2011		41,942	41,866	42,860
2012		42,056	41,902	43,093
2013		42,170	41,939	43,330
2014		42,284	41,976	43,569
2015		42,399	42,012	43,811
2016		42,514	42,049	44,056
2017		42,629	42,086	44,304
2018		42,744	42,123	44,554
2019		42,860	42,160	44,808
2020		42,977	42,197	45,065
2021		43,093	42,232	45,325
2022		43,210	42,269	45,588
2023		43,327	42,306	45,854
2024		43,445	42,344	46,124
2025		43,563	42,381	46,396
2026		43,681	42,419	46,672
2027		43,800	42,456	46,951
2028		43,918	42,494	47,233
2029		44,038	42,531	47,519
2030		44,157	42,569	47,807
2031		44,277	42,607	48,100
2032		44,397	42,645	48,395
2033		44,518	42,683	48,694
2034		44,639	42,721	48,997
2035		44,760	42,759	49,320
2036		44,882	42,797	
2037		45,004	42,835	
2038		45,126	42,873	
2039		45,249	42,911	
2040		45,372	42,950	

Stockton District

Historical & Projected Annual Demand



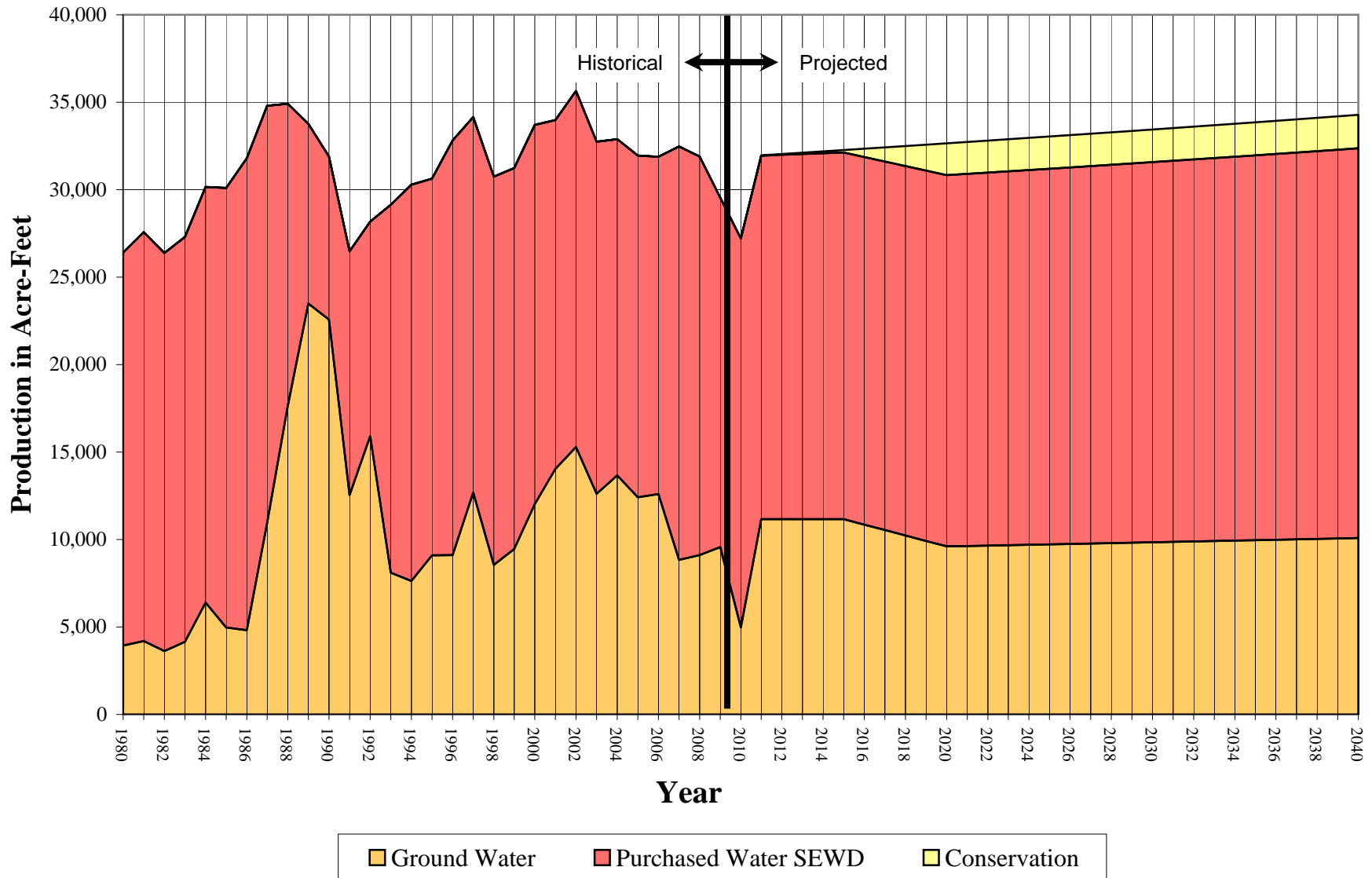
California Water Service Company - Stockton District
Water Supply and Demand Analysis and Projections
Projected Demand in Acre-Feet

Year	Actual Demand	Projection			Unadjusted Baseline Demand	Target Demand	Water Supply and Facility Master Plan
		Low	Average	High			
1980	26,406						
1981	27,574						
1982	26,376						
1983	27,297						
1984	30,157						
1985	30,097						
1986	31,800						
1987	34,804						
1988	34,909						
1989	33,769						
1990	31,893						
1991	26,487						
1992	28,182						
1993	29,139						
1994	30,294						
1995	30,636						
1996	32,818						
1997	34,159						
1998	30,754						
1999	31,240						
2000	33,704						
2001	33,975						
2002	35,645						
2003	32,743						
2004	32,894						
2005	31,957						
2006	31,885					31,885	
2007	32,469					32,102	
2008	31,894					32,321	
2009	29,547					32,543	
2010	27,218	27,094	32,981	38,357	31,877	31,877	32,767

Year	Actual Demand	Projection			Unadjusted Baseline Demand	Target Demand	Water Supply and Facility Master Plan
		Low	Average	High			
2011		27,182	33,091	38,486	31,971	31,944	32,994
2012		27,270	33,202	38,615	32,045	31,991	33,223
2013		27,358	33,296	38,726	32,120	32,038	33,456
2014		27,447	33,424	38,876	32,194	32,085	33,691
2015		27,536	33,537	39,007	32,268	32,132	33,928
2016		27,626	33,649	39,139	32,345	31,875	34,169
2017		27,715	33,762	39,271	32,419	31,614	34,412
2018		27,805	33,876	39,404	32,495	31,354	34,658
2019		27,896	33,990	39,537	32,572	31,092	34,907
2020		27,987	34,104	39,671	32,650	30,830	35,159
2021		28,078	34,219	39,806	32,726	30,903	35,414
2022		28,170	34,335	39,941	32,805	30,976	35,671
2023		28,262	34,432	40,056	32,883	31,050	35,931
2024		28,354	34,567	40,213	32,961	31,124	36,195
2025		28,447	34,684	40,350	33,040	31,198	36,461
2026		28,540	34,801	40,487	33,120	31,274	36,731
2027		28,634	34,919	40,625	33,200	31,350	37,003
2028		28,728	35,038	40,764	33,280	31,426	37,279
2029		28,822	35,157	40,903	33,361	31,501	37,557
2030		28,917	35,276	41,043	33,441	31,577	37,839
2031		29,012	35,396	41,184	33,523	31,655	38,124
2032		29,107	35,517	41,325	33,603	31,731	38,412
2033		29,203	35,619	41,444	33,685	31,808	38,703
2034		29,299	35,760	41,609	33,770	31,888	38,998
2035		29,396	35,882	41,752	33,852	31,965	39,296
2036		29,493	36,005	41,896	33,936	32,045	
2037		29,591	36,128	42,040	34,020	32,124	
2038		29,689	36,252	42,185	34,104	32,204	
2039		29,787	36,376	42,331	34,188	32,283	
2040		29,886	36,501	42,477	34,275	32,364	

Stockton District

Historical and Projected Distribution of Demand by Source



California Water Service Company - Stockton District
Water Supply and Demand Analysis and Projections
Historical and Projected Distribution of Demand by Source

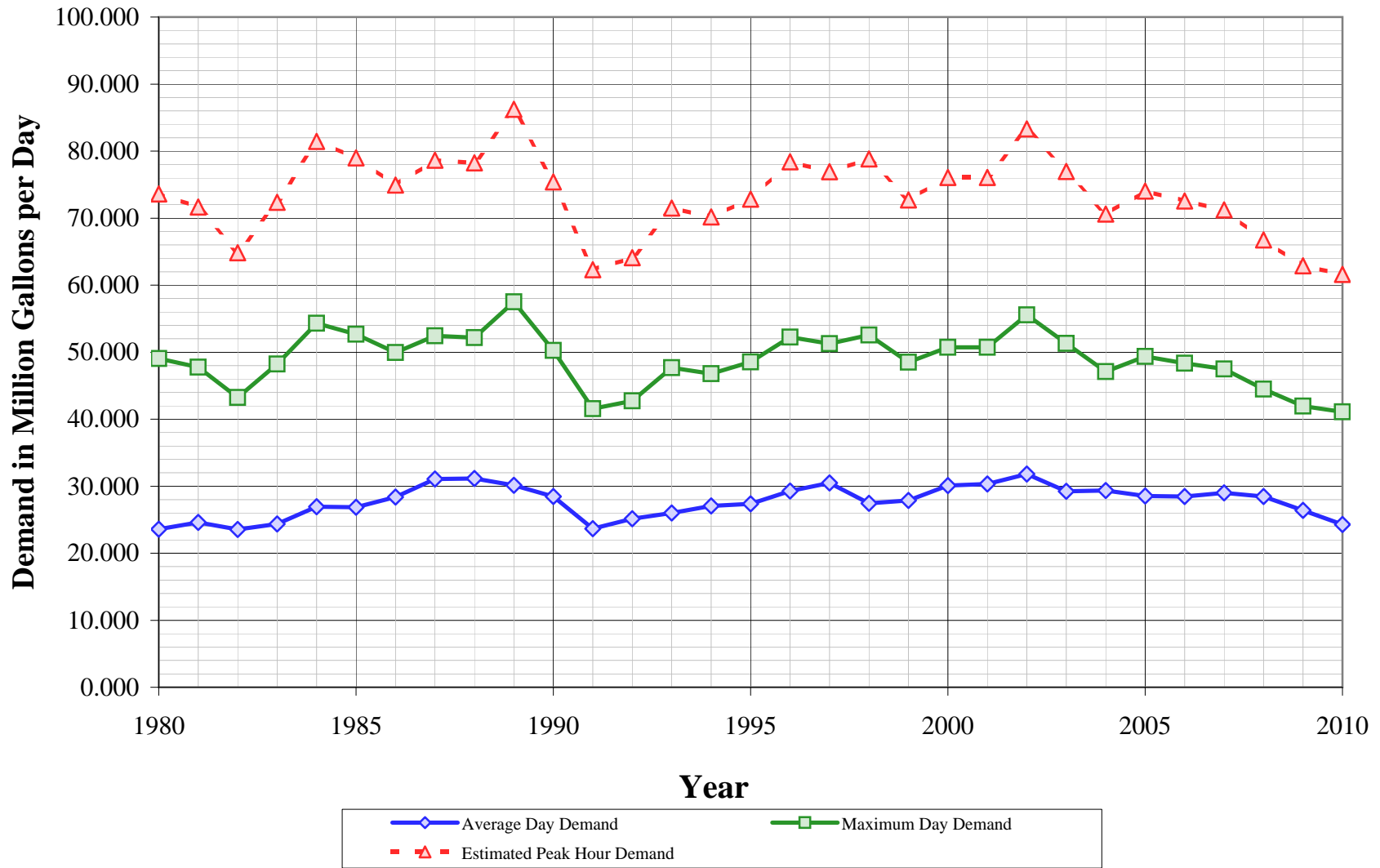
Worksheet 17

Year	Purchased Water		Ground Water		Conservation		Total	
	SEWD		kGal	AFY	kGal	AFY	KGal	(Acre-Feet)
kGal	AFY							
1970	0	0	9,707,331	29,791			9,707,331	29,791
1971	0	0	9,746,758	29,912			9,746,758	29,912
1972	0	0	10,412,140	31,954			10,412,140	31,954
1973	0	0	10,288,969	31,576			10,288,969	31,576
1974	0	0	10,730,493	32,931			10,730,493	32,931
1975	0	0	10,505,984	32,242			10,505,984	32,242
1976	0	0	10,372,712	31,833			10,372,712	31,833
1977	700,573	2,150	7,569,118	23,229			8,269,690	25,379
1978	5,651,830	17,345	2,095,201	6,430			7,747,031	23,775
1979	8,002,495	24,559	1,813,669	5,566			9,816,164	30,125
1980	7,321,360	22,468	1,282,993	3,937			8,604,353	26,406
1981	7,616,125	23,373	1,369,043	4,201			8,985,168	27,574
1982	7,415,074	22,756	1,179,579	3,620			8,594,653	26,376
1983	7,541,802	23,145	1,352,893	4,152			8,894,695	27,297
1984	7,743,447	23,764	2,083,122	6,393			9,826,569	30,157
1985	8,189,453	25,133	1,617,746	4,965			9,807,199	30,097
1986	8,795,189	26,991	1,566,948	4,809			10,362,137	31,800
1987	7,772,631	23,853	3,568,127	10,950			11,340,758	34,804
1988	5,628,880	17,274	5,746,260	17,635			11,375,140	34,909
1989	3,349,524	10,279	7,654,131	23,490			11,003,655	33,769
1990	3,036,887	9,320	7,355,422	22,573			10,392,309	31,893
1991	4,544,826	13,948	4,086,020	12,540			8,630,846	26,487
1992	4,002,608	12,284	5,180,503	15,898			9,183,111	28,182
1993	6,853,136	21,032	2,641,962	8,108			9,495,098	29,139
1994	7,385,046	22,664	2,486,239	7,630			9,871,285	30,294
1995	7,020,126	21,544	2,962,708	9,092			9,982,834	30,636
1996	7,723,213	23,702	2,970,558	9,116			10,693,771	32,818
1997	6,995,075	21,467	4,135,548	12,692			11,130,623	34,159
1998	7,237,495	22,211	2,783,599	8,543			10,021,094	30,754
1999	7,098,246	21,784	3,081,409	9,457			10,179,655	31,240
2000	7,065,742	21,684	3,916,620	12,020			10,982,362	33,704
2001	6,494,461	19,931	4,576,399	14,044			11,070,860	33,975
2002	6,635,276	20,363	4,979,733	15,282			11,615,009	35,645
2003	6,557,117	20,123	4,112,112	12,620			10,669,229	32,743
2004	6,267,817	19,235	4,450,650	13,659			10,718,467	32,894
2005	6,370,567	19,551	4,042,799	12,407			10,413,366	31,957

Year	Purchased Water		Ground Water		Total	
	SEWD		KGal	(Acre-Feet)	KGal	(Acre-Feet)
KGal	(Acre-Feet)					
2006	6,285,146	19,288	4,104,570	12,596	10,389,716	31,885
2007	7,699,055	23,628	2,881,046	8,842	10,580,101	32,469
2008	7,424,382	22,785	2,968,352	9,110	10,392,734	31,894
2009	6,508,359	19,973	3,119,548	9,574	9,627,907	29,547
2010	7,247,513	22,242	1,621,434	4,976	8,868,947	27,218
2011	6,771,536	20,781	3,637,410	11,163	10,417,747	31,971
2012	6,787,289	20,829	3,637,050	11,162	10,441,984	32,045
2013	6,803,043	20,878	3,636,648	11,160	10,466,220	32,120
2014	6,818,796	20,926	3,636,206	11,159	10,490,456	32,194
2015	6,834,550	20,974	3,635,723	11,158	10,514,692	32,268
2016	6,850,718	21,024	3,535,755	10,851	10,539,566	32,345
2017	6,866,472	21,072	3,435,066	10,542	10,563,803	32,419
2018	6,882,640	21,122	3,334,079	10,232	10,588,677	32,495
2019	6,898,808	21,172	3,232,580	9,920	10,613,551	32,572
2020	6,915,391	21,223	3,130,756	9,608	10,639,062	32,650
2021	6,931,559	21,272	3,138,075	9,630	10,663,936	32,726
2022	6,948,141	21,323	3,145,583	9,653	10,689,448	32,805
2023	6,964,724	21,374	3,153,090	9,676	10,714,960	32,883
2024	6,981,307	21,425	3,160,598	9,700	10,740,472	32,961
2025	6,997,889	21,476	3,168,105	9,723	10,765,984	33,040
2026	7,014,887	21,528	3,175,800	9,746	10,792,133	33,120
2027	7,031,884	21,580	3,183,495	9,770	10,818,283	33,200
2028	7,048,881	21,632	3,191,190	9,793	10,844,433	33,280
2029	7,065,878	21,684	3,198,885	9,817	10,870,582	33,361
2030	7,082,876	21,737	3,206,580	9,841	10,896,732	33,441
2031	7,100,287	21,790	3,214,463	9,865	10,923,519	33,523
2032	7,117,285	21,842	3,222,158	9,888	10,949,669	33,603
2033	7,134,696	21,896	3,230,041	9,913	10,976,456	33,685
2034	7,152,523	21,950	3,238,111	9,937	11,003,881	33,770
2035	7,169,935	22,004	3,245,994	9,962	11,030,669	33,852
2036	7,187,761	22,058	3,254,064	9,986	11,058,094	33,936
2037	7,205,587	22,113	3,262,135	10,011	11,085,519	34,020
2038	7,223,414	22,168	3,270,205	10,036	11,112,944	34,104
2039	7,241,240	22,223	3,278,275	10,061	11,140,369	34,188
2040	7,259,481	22,278	3,286,533	10,086	11,168,432	34,275

Stockton District

Average Day, Max Day, and Peak Demand



California Water Service Company - Stockton District

Worksheet 18

Water Supply and Demand Analysis and Projections

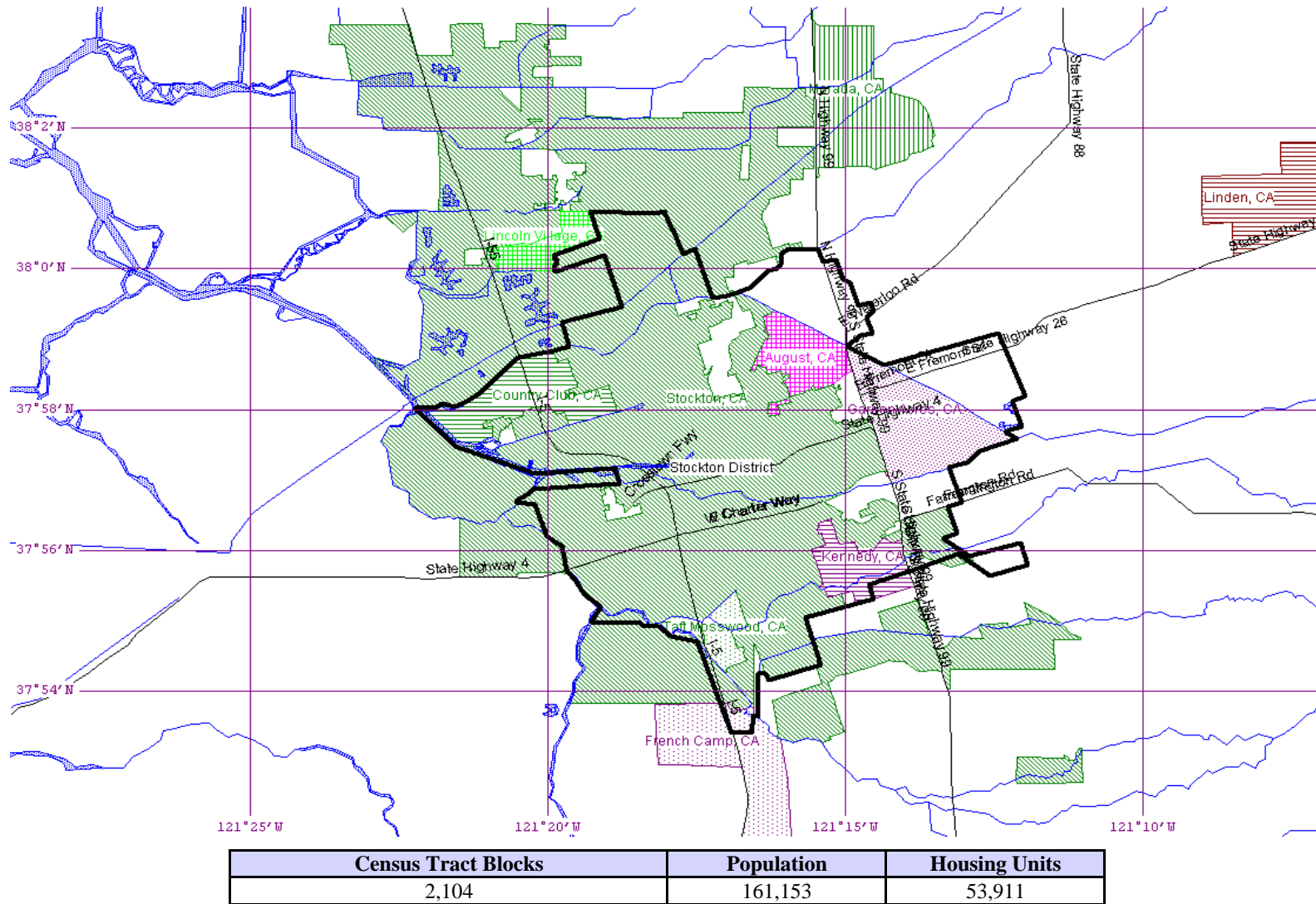
Historical and Projected Average Day, Maximum Day, and Peak Demand

Year	Historical Annual Demand		Average Day Demand		Maximum Day Demand		MDD ADD Ratio	Estimated Peak Hour Demand		PHD MDD Ratio	PHD ADD Ratio	Measured Peak Hour Demand		PHD MDD Ratio
	(AFY)	(MGY)	(MGD)	(GPD)	(MGD)	(GPD)		(MGD)	(GPM)			(MGD)	(GPM)	
1980	26,406	8,604	23.574	629	49.064	1,309	2.08	73.596	51,108	1.50	3.12			
1981	27,574	8,985	24.617	654	47.777	1,270	1.94	71.666	49,768	1.50	2.91			
1982	26,376	8,595	23.547	625	43.223	1,147	1.84	64.835	45,024	1.50	2.75			
1983	27,297	8,895	24.369	645	48.244	1,278	1.98	72.366	50,254	1.50	2.97			
1984	30,157	9,827	26.922	710	54.294	1,431	2.02	81.441	56,556	1.50	3.03			
1985	30,097	9,807	26.869	706	52.664	1,383	1.96	78.996	54,858	1.50	2.94			
1986	31,800	10,362	28.389	744	49.952	1,309	1.76	74.928	52,033	1.50	2.64			
1987	34,804	11,341	31.071	808	52.430	1,364	1.69	78.645	54,615	1.50	2.53			
1988	34,909	11,375	31.165	809	52.164	1,354	1.67	78.246	54,338	1.50	2.51			
1989	33,769	11,004	30.147	780	57.502	1,487	1.91	86.253	59,898	1.50	2.86			
1990	31,893	10,392	28.472	730	50.260	1,289	1.77	75.390	52,354	1.50	2.65			
1991	26,487	8,631	23.646	600	41.546	1,054	1.76	62.319	43,277	1.50	2.64			
1992	28,182	9,183	25.159	633	42.740	1,075	1.70	64.110	44,521	1.50	2.55			
1993	29,139	9,495	26.014	649	47.668	1,190	1.83	71.502	49,654	1.50	2.75			
1994	30,294	9,871	27.045	674	46.787	1,166	1.73	70.181	48,736	1.50	2.59			
1995	30,636	9,983	27.350	680	48.557	1,207	1.78	72.836	50,580	1.50	2.66			
1996	32,818	10,694	29.298	725	52.261	1,294	1.78	78.392	54,439	1.50	2.68			
1997	34,159	11,131	30.495	754	51.274	1,267	1.68	76.911	53,410	1.50	2.52			
1998	30,754	10,021	27.455	677	52.558	1,295	1.91	78.837	54,748	1.50	2.87			
1999	31,240	10,180	27.889	684	48.482	1,189	1.74	72.723	50,502	1.50	2.61			
2000	33,704	10,982	30.089	734	50.702	1,236	1.69	76.053	52,815	1.50	2.53			
2001	33,975	11,071	30.331	737	50.719	1,233	1.67	76.079	52,832	1.50	2.51			
2002	35,645	11,615	31.822	774	55.551	1,351	1.75	83.327	57,866	1.50	2.62			
2003	32,743	10,669	29.231	713	51.314	1,252	1.76	76.971	53,452	1.50	2.63			
2004	32,894	10,718	29.366	713	47.077	1,142	1.60	70.616	49,039	1.50	2.40			
2005	31,957	10,413	28.530	689	49.362	1,193	1.73	74.043	51,419	1.50	2.60			
2006	31,885	10,390	28.465	683	48.358	1,160	1.70	72.537	50,373	1.50	2.55			
2007	32,469	10,580	28.987	697	47.498	1,142	1.64	71.247	49,477	1.50	2.46			
2008	31,894	10,393	28.473	697	44.490	1,089	1.56	66.735	46,344	1.50	2.34			
2009	29,547	9,628	26.378	651	41.932	1,035	1.59	62.898	43,679	1.50	2.38			
2010	27,218	8,869	24.298	581	41.074	982	1.69	61.611	42,785	1.50	2.54			
5 year Average (2006-2010)			27.320	662	44.670	1,082	1.64	67.006	46,532	1.50	2.45			
10 year Average (2001-2010)			28.588	693	47.738	1,158	1.67	71.606	49,727	1.50	2.50			

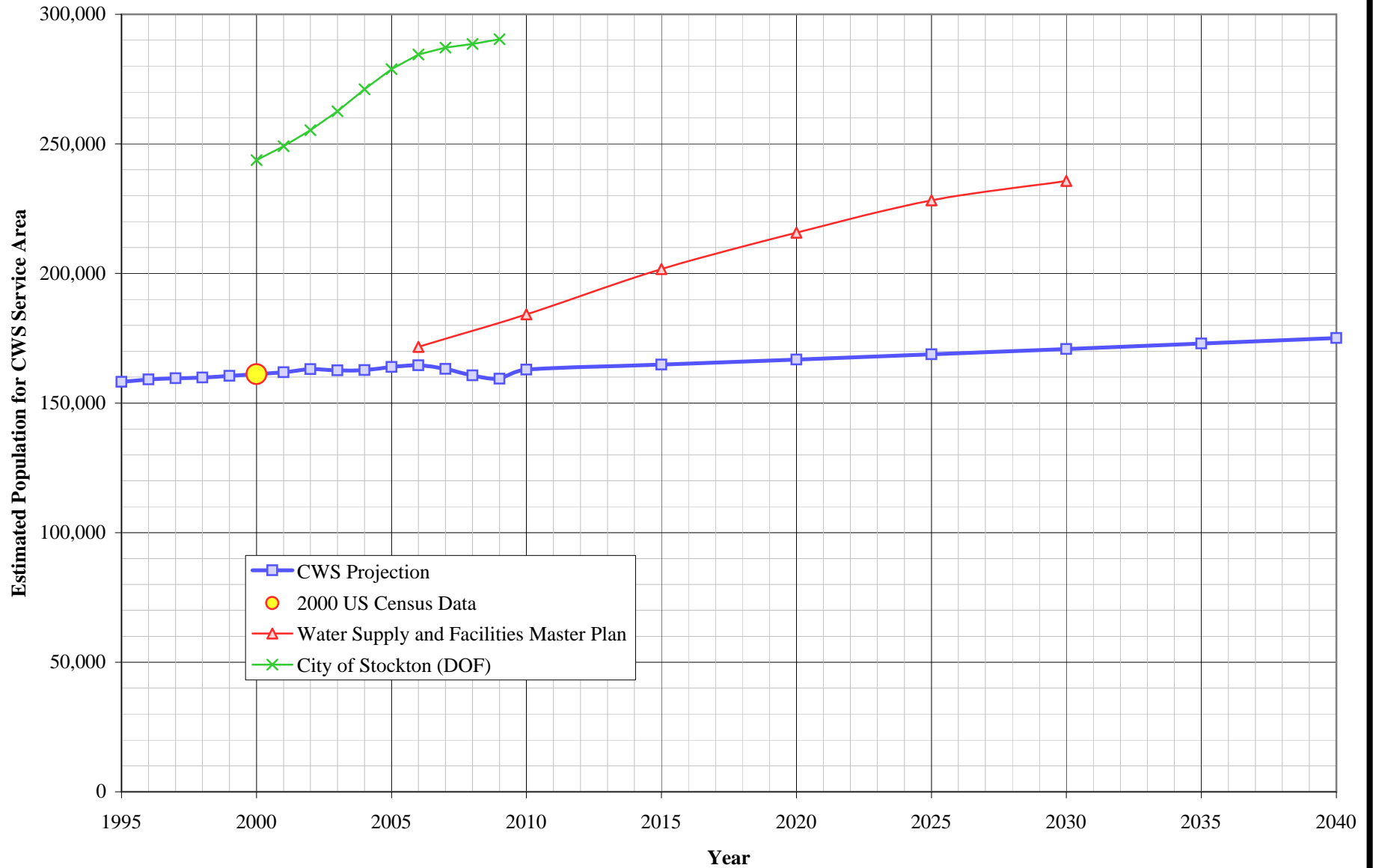
California Water Service Company - Stockton District

Water Supply and Demand Analysis and Projections

US Census 2000 Tract Map Summary



Stockton District Population Projections



California Water Service Company - Stockton District
Water Supply and Demand Analysis and Projections

Population as of the 2000 Average Annual Services
 Estimated District Population based on 2000 U.S. Census Data & Annual Service Count

District Communities Served: Stockton

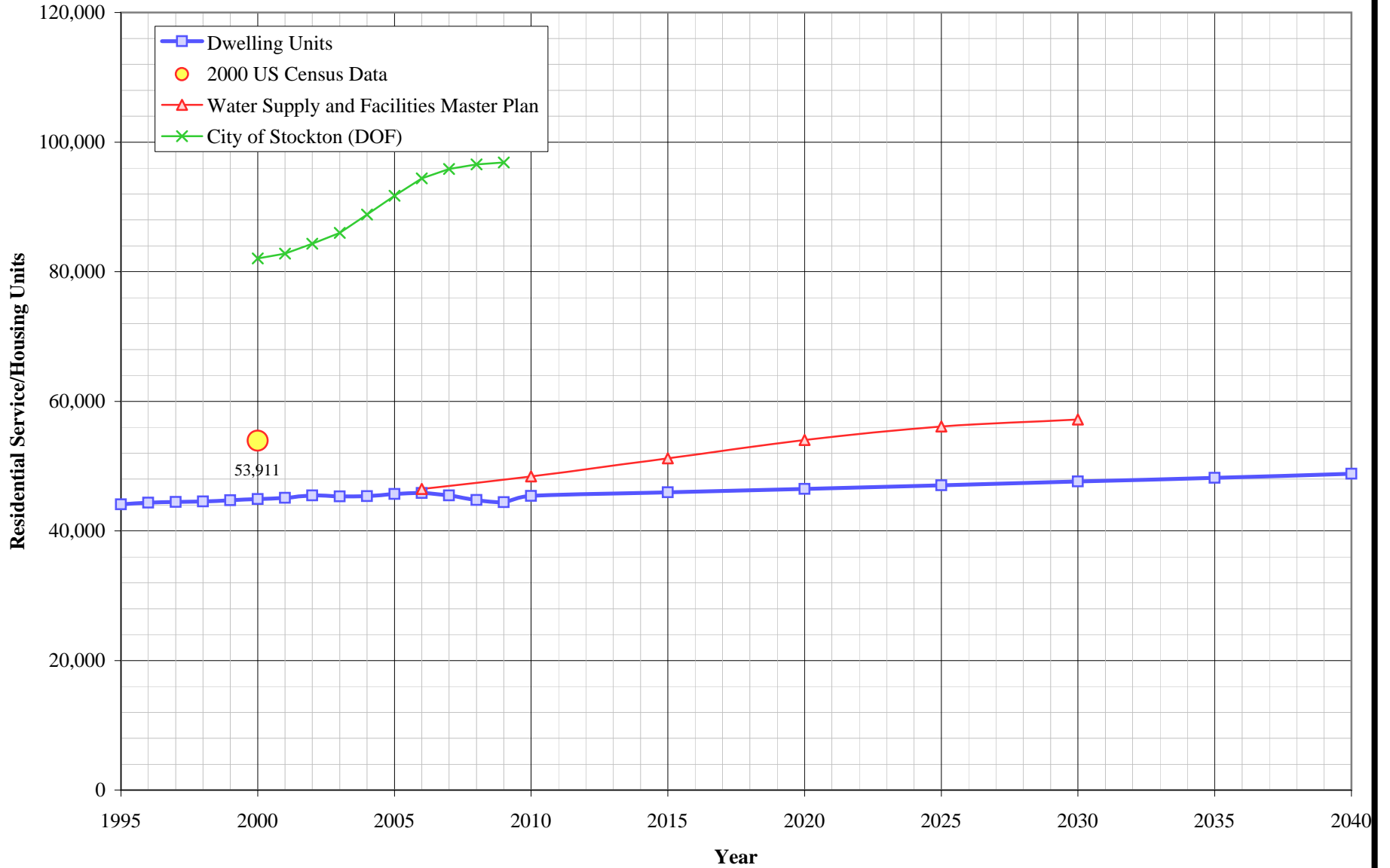
Year	Single Family Residential Services (DU)	Multi Family Residential			Total Residential Dwelling Units	Estimated District Population
		Services	Residential Units (DU)	Unit Density		
1995	35,540	341	8,536	25.0	44,076	158,140
1996	35,755	336	8,598	25.6	44,353	159,140
1997	35,837	336	8,643	25.7	44,480	159,590
1998	35,952	337	8,585	25.5	44,537	159,800
1999	36,117	336	8,612	25.6	44,729	160,490
2000	36,341	336	8,574	25.5	44,915	161,153
2001	36,463	338	8,641	25.6	45,104	161,830
2002	36,399	331	9,057	27.4	45,457	163,100
2003	36,261	327	9,050	27.7	45,310	162,570
2004	36,456	326	8,899	27.3	45,355	162,730
2005	36,634	326	9,053	27.8	45,687	163,920
2006	36,924	321	8,930	27.8	45,854	164,520
2007	36,872	319	8,602	27.0	45,474	163,160
2008	36,173	345	8,603	24.9	44,776	160,660
2009	35,830	364	8,603	23.6	44,433	159,420
2010	35,830	386	9,561	24.8	45,391	162,860
2015	37,597	400	8,351	20.9	45,948	164,860
2020	38,100	413	8,392	20.3	46,492	166,810
2025	38,609	428	8,437	19.7	47,046	168,800
2030	39,125	443	8,492	19.2	47,618	170,850
2035	39,649	458	8,554	18.7	48,203	172,950
2040	40,179	474	8,626	18.2	48,805	175,110

US Census 2000		Calculated Persons per CWS DU	Calculated Persons per US Census Housing Unit
Population	Housing Units		
161,153	53,911	3.588	2.989

Projected

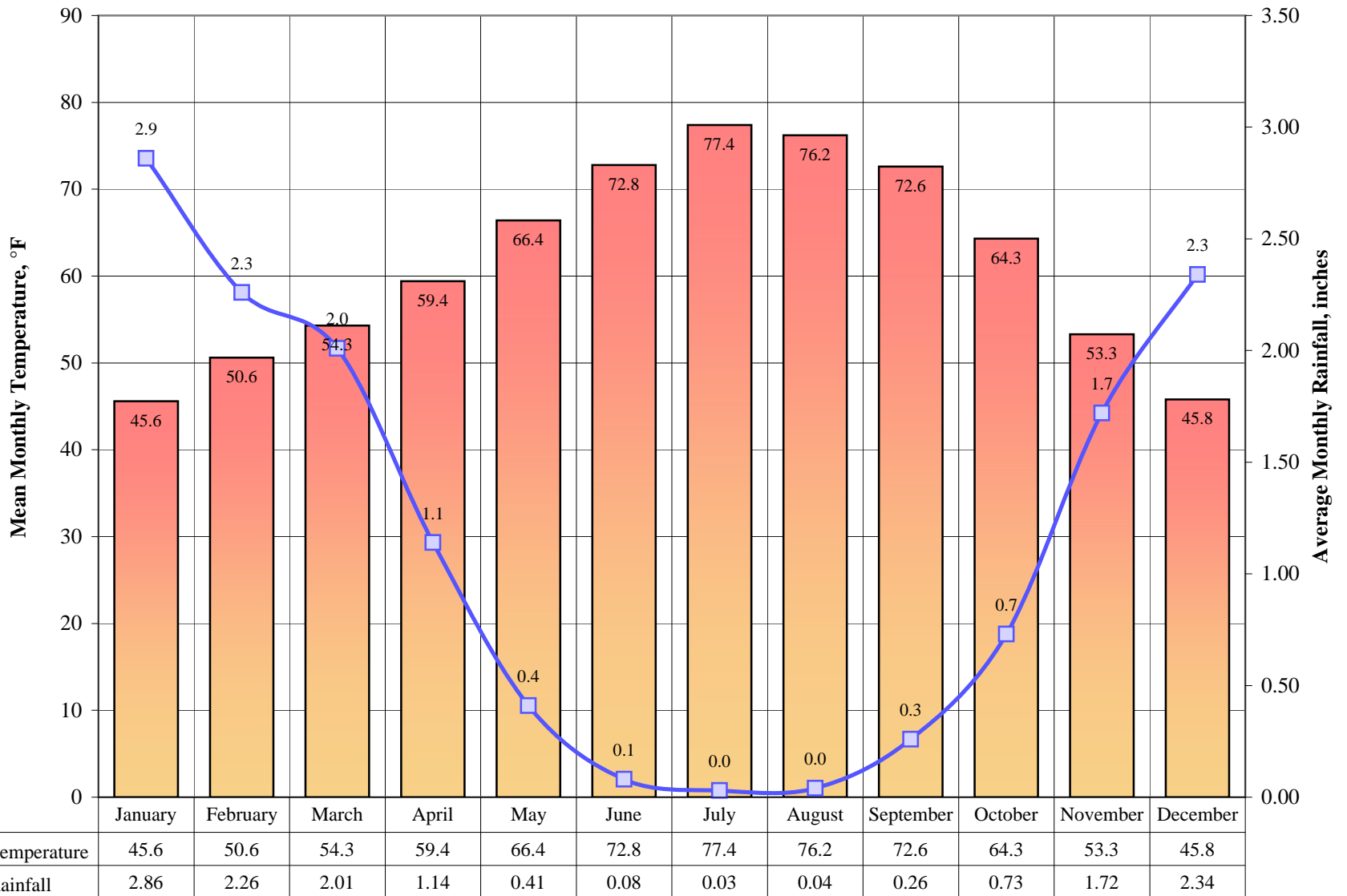
Note: Projected MF unit density adjusted to reflect reclassification of MF services and assumes increasing density over time.

Stockton District Housing Projection



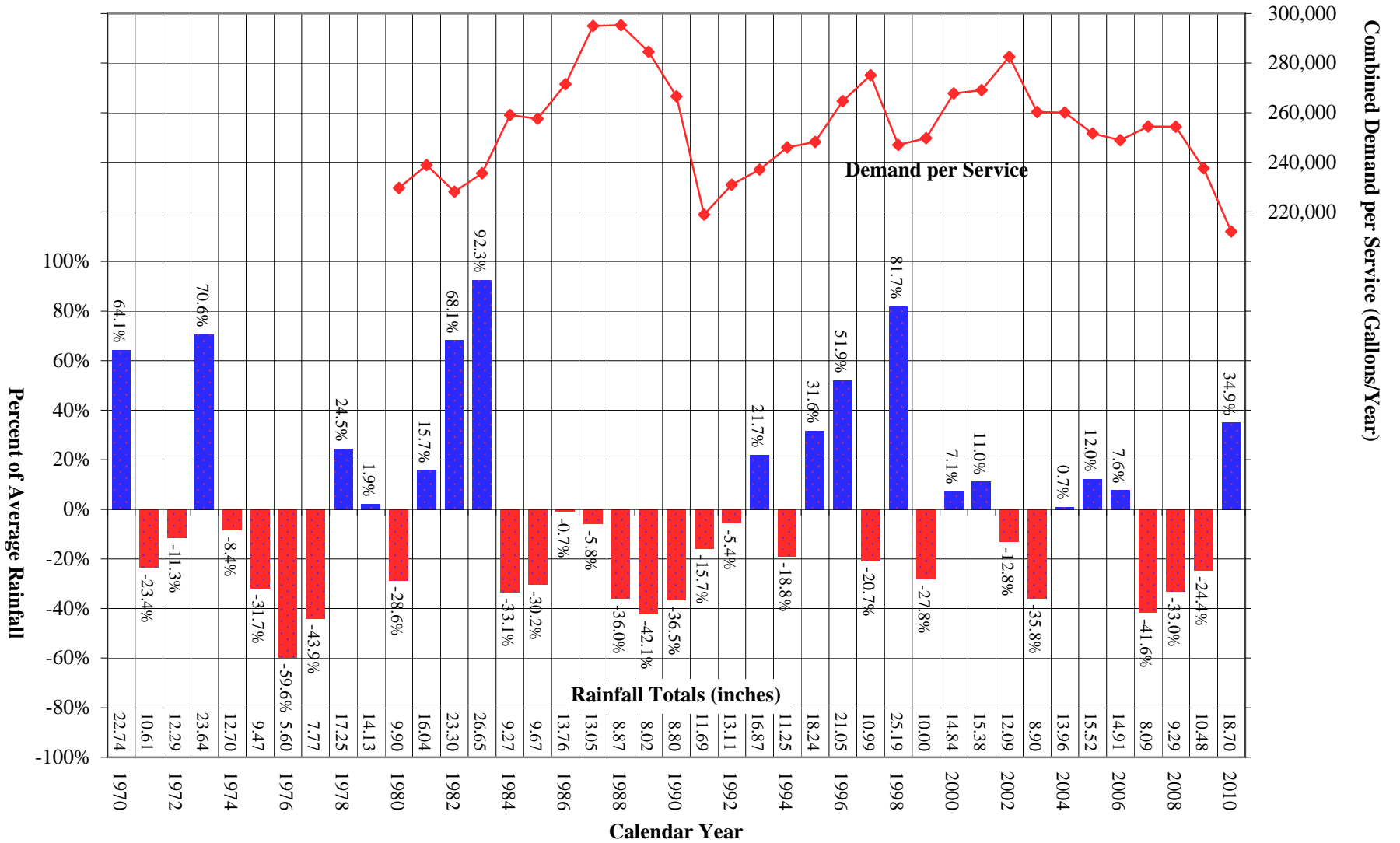
Stockton District

Average Monthly Temperature and Rainfall



Stockton District Annual Rainfall Totals

Average Annual Rainfall Total: 13.8 inches



California Water Service Company - Stockton District

Water Supply and Demand Analysis and Projections

Worksheet 20

Temperature & Rainfall History (Fahrenheit, Inches)

Year	Annual Average Temp.	Annual Average Rainfall	Rainfall Percent Variation	Demand per Service (Gal / Yr)	Percent of Average Demand	Year	Annual Average Temp.	Annual Average Rainfall	Rainfall Percent Variation	Demand per Service (Gal / Yr)	Percent of Average Demand
1970	62.2	22.74	64.1%			1995	63.9	18.24	31.6%	248,163	97.7%
1971	60.7	10.61	-23.4%			1996	63.9	21.05	51.9%	264,710	104.2%
1972	61.2	12.29	-11.3%			1997	62.5	10.99	-20.7%	275,088	108.2%
1973	62.0	23.64	70.6%			1998	59.9	25.19	81.7%	247,001	97.2%
1974	61.9	12.70	-8.4%			1999	60.1	10.00	-27.8%	249,752	98.3%
1975	59.8	9.47	-31.7%			2000	61.3	14.84	7.1%	267,765	105.4%
1976	61.2	5.60	-59.6%			2001	62.2	15.38	11.0%	269,058	105.9%
1977	63.2	7.77	-43.9%			2002	61.1	12.09	-12.8%	282,562	111.2%
1978	62.6	17.25	24.5%			2003	61.9	8.90	-35.8%	260,249	102.4%
1979	63.3	14.13	1.9%			2004	61.7	13.96	0.7%	260,073	102.3%
1980	62.3	9.90	-28.6%	229,639	90.4%	2005	63.0	15.52	12.0%	251,650	99.0%
1981	63.4	16.04	15.7%	238,878	94.0%	2006	62.3	14.91	7.6%	248,945	98.0%
1982	60.0	23.30	68.1%	228,150	89.8%	2007	63.0	8.09	-41.6%	254,421	100.1%
1983	62.5	26.65	92.3%	235,596	92.7%	2008	61.9	9.29	-33.0%	254,286	100.1%
1984	62.4	9.27	-33.1%	259,017	101.9%	2009	61.6	10.48	-24.4%	237,609	93.5%
1985	59.8	9.67	-30.2%	257,583	101.4%	2010	60.7	18.70	34.9%	212,029	83.4%
1986	62.2	13.76	-0.7%	271,509	106.8%	2011					
1987	62.2	13.05	-5.8%	294,979	116.1%	2012					
1988	62.4	8.87	-36.0%	295,236	116.2%	2013					
1989	60.9	8.02	-42.1%	284,549	112.0%	2014					
1990	62.1	8.80	-36.5%	266,579	104.9%	2015					
1991	62.1	11.69	-15.7%	218,935	86.2%	2016					
1992	63.3	13.11	-5.4%	230,923	90.9%	2017					
1993	62.4	16.87	21.7%	237,028	93.3%	2018					
1994	61.7	11.25	-18.8%	246,050	96.8%	2019					

Source: Western Regional Climate Center:

<http://www.wrcc.dri.edu/cgi-bin/cliMAIN.pl?ca8558>

Calendar Year	Average Water Year	Normal Water Year	Single-Dry Water Year	Multiple-Dry Water Years			
				1	2	3	4
	-	2004	2007	1988	1989	1990	1991
Demand per Service (gal/yr)	254,129	260,073	254,421	295,236	284,549	266,579	218,935
Difference from Average	100.0%	100.0%	97.8%	113.5%	109.4%	102.5%	84.2%

California Water Service Company - Stockton District Water Supply and Demand Analysis and Projections

Worksheet 20

Temperature Data

Station:(048558) STOCKTON WSO															
From Year=1948 To Year=2010															
	Monthly Averages			Daily Extremes				Monthly Extremes				Max. Temp.		Min. Temp.	
	Max.	Min.	Mean	High	Date	Low	Date	Highest Mean	Year	Lowest Mean	Year	>= 90 F	<= 32 F	<= 32 F	<= 0 F
	F	F	F	F	dd/yyyy or yyyymmdd	F	dd/yyyy or yyyymmdd	F	-	F	-	# Days	# Days	# Days	# Days
January	53.6	37.6	45.6	75	9/1953	16	11/1949	52.8	1995	38.1	1949	0	0	8	0
February	60.6	40.5	50.6	78	18/1977	22	6/1989	56	1963	45.6	1949	0	0	3.1	0
March	66	42.6	54.3	87	31/1966	27	2/1971	59.9	2007	49.7	1985	0	0	0.9	0
April	72.8	46	59.4	100	30/1981	32	24/1964	65.3	1977	50.1	1967	0.8	0	0.1	0
May	81.1	51.7	66.4	107	28/1984	36	11/2010	73	2001	59.3	1998	6.2	0	0	0
June	88.5	57	72.8	111	2/1960	45	7/1950	80.5	1981	68	1952	13.5	0	0	0
July	94.3	60.5	77.4	115	23/2006	49	6/1951	82	2006	71.9	1955	23.5	0	0	0
August	92.6	59.8	76.2	109	10/1971	42	4/1951	81.2	1967	70.6	1954	21.1	0	0	0
September	88.2	57	72.6	108	2/1950	42	30/1950	77.8	1979	67.1	1986	13.6	0	0	0
October	78.3	50.2	64.3	101	2/1952	33	31/1972	69.5	1991	60.5	1969	2.7	0	0	0
November	64.5	42.2	53.3	85	1/1949	25	19/1985	60.1	1995	48.4	2000	0	0	2	0
December	53.9	37.6	45.8	73	4/1958	17	22/1990	50.9	2005	39.1	1963	0	0	8	0
Annual	74.5	48.6	61.5	115	20060723	16	19490111	63.9	1996	58.9	1955	81.4	0	22	0

Monthly Average ETo Report	Jan	Feb	Mar	Apr	May	Jun	Jul	Aug	Sep	Oct	Nov	Dec	Total
		1.24	1.96	3.41	5.10	6.82	7.80	8.06	7.13	5.40	3.72	1.80	0.93

1) California Irrigation Management Information System (CIMIS), Reference EvapoTranpiration (Eton) Zones, Zone 12

California Water Service Company - Stockton District Water Supply and Demand Analysis and Projections

Precipitaion Data

Station:(048558) STOCKTON WSO														
From Year=1948 To Year=2010														
	Precipitation										Total Snowfall			
	Mean	High	Year	Low	Year	1 Day Max.		>=	>=	>=	>=	Mean	High	Year
	in.	in.	-	in.	-	in.	dd/yyyy or yyyymmdd	# Days	# Days	# Days	# Days	in.	in.	-
January	2.86	7.06	1970	0.14	1976	3.01	21/1967	10	6	2	0	0	0	1949
February	2.26	8.22	1998	0.05	1964	1.62	17/1986	9	5	1	0	0	0.3	1976
March	2.01	6.48	1982	0	1956	1.54	21/1978	8	5	1	0	0	0	1949
April	1.14	3.55	1958	0	1949	1.5	27/1954	5	3	1	0	0	0	1949
May	0.41	3.73	1998	0	1959	1.66	27/1990	2	1	0	0	0	0	1949
June	0.08	0.66	1964	0	1949	0.34	6/1953	1	0	0	0	0	0	1949
July	0.03	0.61	1974	0	1949	0.5	2/1980	0	0	0	0	0	0	1949
August	0.04	0.81	1975	0	1949	0.81	18/1975	0	0	0	0	0	0	1949
September	0.26	3	1959	0	1949	2.64	18/1959	1	1	0	0	0	0	1949
October	0.73	2.68	2000	0	1952	1.46	13/2009	3	2	1	0	0	0	1948
November	1.72	6.22	1972	0	1956	2.18	18/1950	7	4	1	0	0	0	1948
December	2.34	8.05	1955	0.03	1989	2.38	22/1955	9	6	1	0	0	0	1948
Annual	13.86	26.65	1983	5.6	1976	3.01	19670121	55	33	9	2	0	0.3	1976

California Water Service Company - Stockton District
Water Supply and Demand Analysis and Projections

Groundwater Facilities

	UNIT NO.	Design Capacity		Status
		Active (GPM)	Standby (GPM)	
1	STK-W-004-02		700	Standby
2	STK-W-007-02	1400		Active
3	STK-W-016-01	1000		Active
4	STK-W-018-01	600		Active
5	STK-W-021-01	1100		Active
6	STK-W-035-01	625		Active
7	STK-W-036-01	900		Active
8	STK-W-039-01		950	Standby
9	STK-W-043-01		900	Standby
10	STK-W-044-01		565	Standby
11	STK-W-046-01		650	Standby
12	STK-W-047-01		900	Standby
13	STK-W-051-01		1100	Standby
14	STK-W-052-01	750		Active
15	STK-W-059-01	1750		Active
16	STK-W-060-01	1800		Active
17	STK-W-061-01	1600		Active
18	STK-W-062-01	1000		Active
19	STK-W-063-01	1800		Active
20	STK-W-066-01	1750		Active
21	STK-W-066-02	1750		Active

	UNIT NO.	Design Capacity		Status
		Active (GPM)	Standby (GPM)	
22	STK-W-067-01	1000		Active
23	STK-W-068-01	1700		Active
24	STK-W-069-01	1000		Active
25	STK-W-069-02	500		Active
26	STK-W-071-01	1100		Active
27	STK-W-075-01	1200		Active
28	STK-W-076-01	1100		Active
29	STK-W-077-01	1700		Active
30	STK-W-079-01	1100		Active

Units	30	23	7
-------	----	----	---

	28,225	5,765	GPM
Design Capacity	40.6	8.3	MGD
	45,527	9,299	AFY

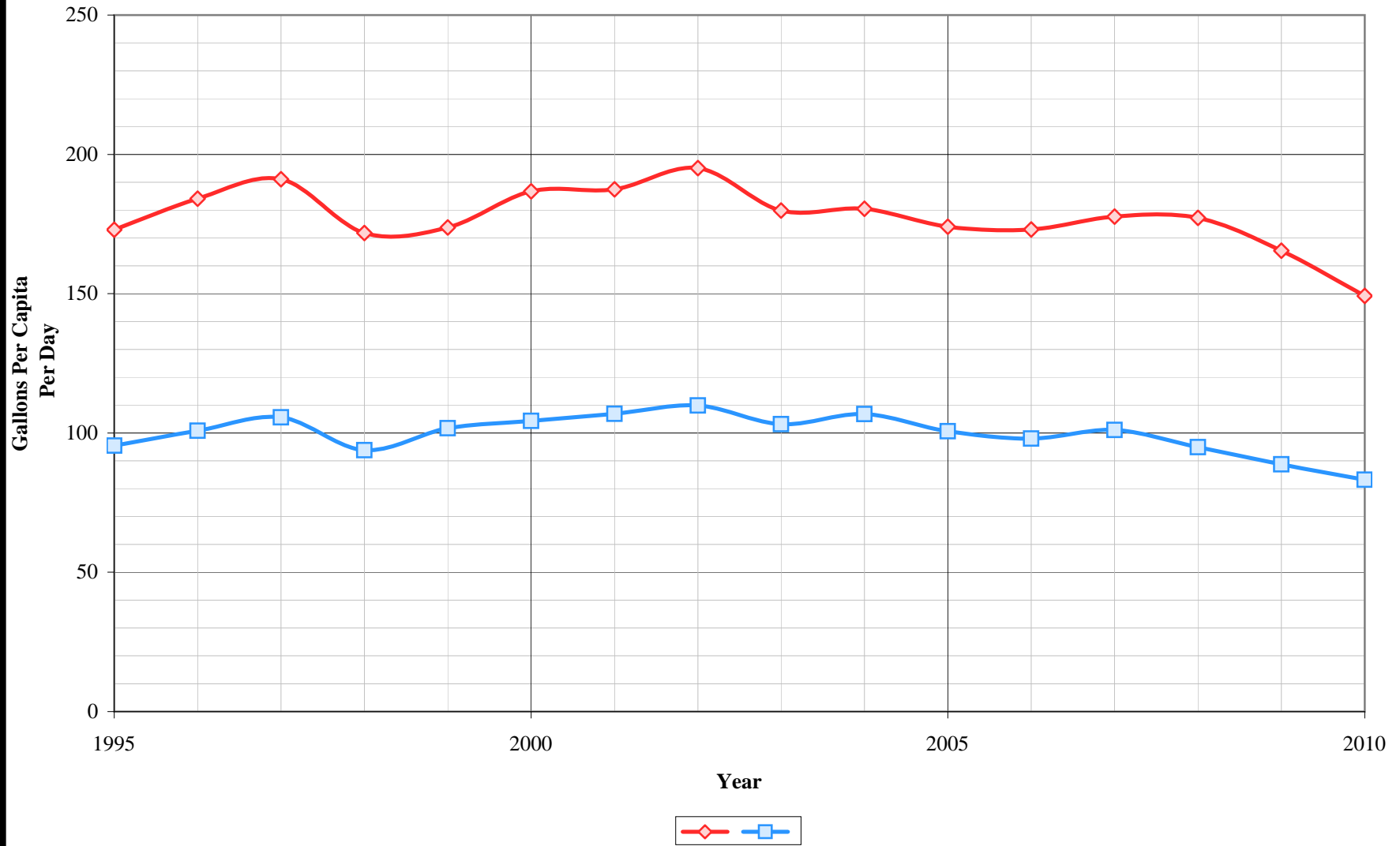
Notes:

1) Listed pump capacities on this worksheet represent design flowrates, actual flowrates are highly dependent on local system pressures, well characteristics, and other design criteria

2) Values in bold are estimated

Updated 1/1/2011

Stockton District Per Capita Consumption



California Water Service Company - Stockton District
Water Supply and Demand Analysis and Projections

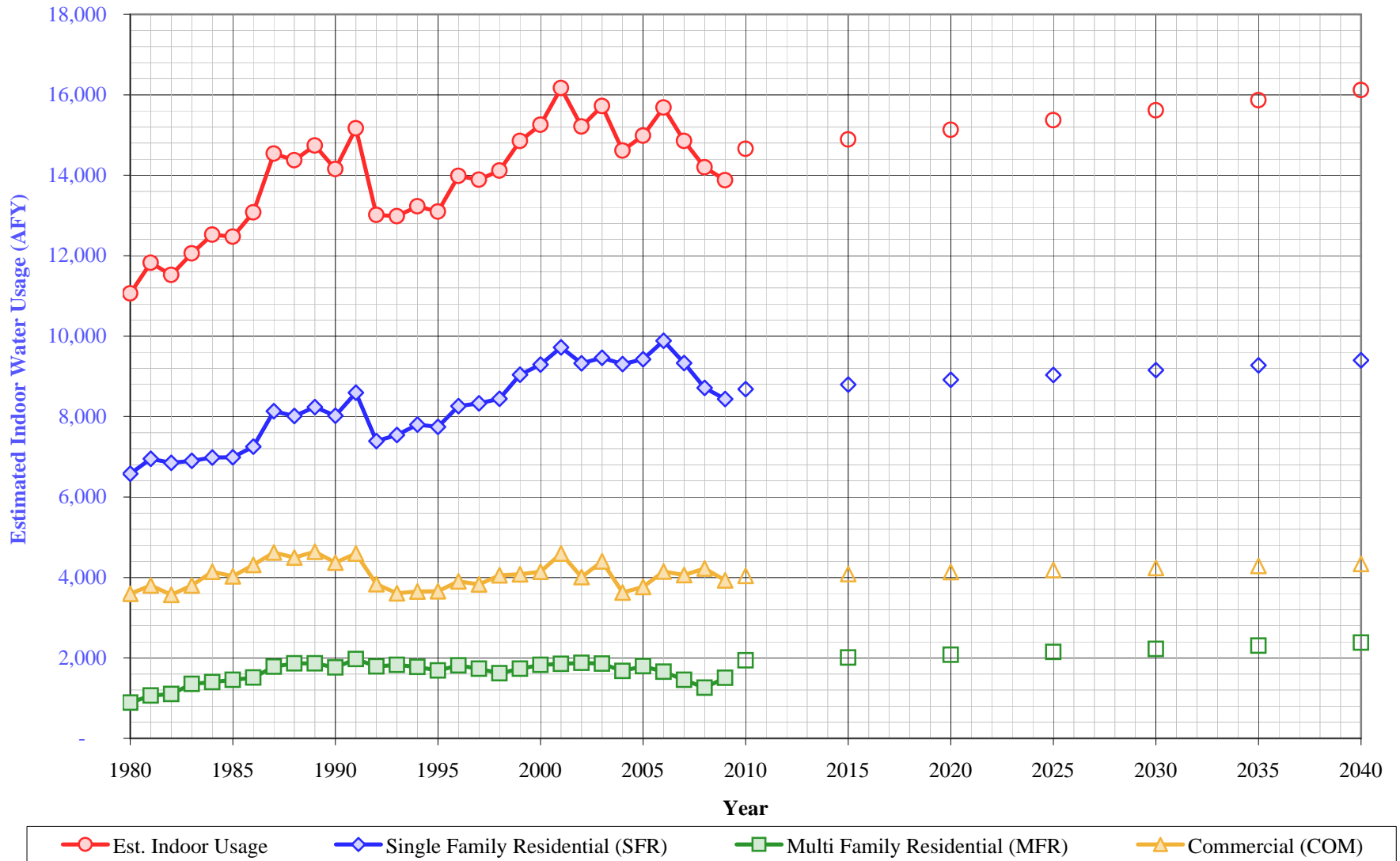
Per Capita Water Demand Calculation

Year	All Users			Residential Only		
	Usage (AFY)	Usage (MGY)	Gallons Per Capita Per Day	Usage (AFY)	Usage (MGY)	Gallons Per Capita Per Day
1995	30,636	9,983	173	16,909	5,510	95
1996	32,818	10,694	184	17,973	5,856	101
1997	34,159	11,131	191	18,884	6,153	106
1998	30,754	10,021	172	16,801	5,475	94
1999	31,240	10,180	174	18,280	5,957	102
2000	33,704	10,982	187	18,839	6,139	104
2001	33,975	11,071	187	19,379	6,315	107
2002	35,645	11,615	195	20,066	6,538	110
2003	32,743	10,669	180	18,789	6,122	103
2004	32,894	10,718	180	19,466	6,343	107
2005	31,957	10,413	174	18,478	6,021	101
2006	31,885	10,390	173	18,050	5,882	98
2007	32,469	10,580	178	18,431	6,006	101
2008	31,894	10,393	177	17,529	5,712	95
2009	29,547	9,628	165	16,432	5,354	89
2010	27,218	8,869	149	15,438	5,031	83
5 Yr. Avg.	30,603	9,972	169	17,176	5,597	93
10 Yr. Avg.	32,023	10,435	176	18,206	5,932	99

Five year average is from years 2006 through 2010.

Ten year average is from years 2001 through 2010.

Stockton District Estimated Indoor Water Usage



**California Water Service Company - Stockton District
Water Supply and Demand Analysis and Projections**

Estimated Indoor/Outdoor Water Usage

Year	Single Family Residential (SFR)							Multi Family Residential (MFR)				Commercial (COM)				Est. Indoor Usage AFY
	Metered Single Family Residential Indoor Use (Annualized 90% of January Total)			Indoor Flat Rate Usage (AFY)	Total SFR Indoor Usage			Multi Family Residential January Usage (CCF)	Multi Family Residential Indoor Use (Annualized 90% of January)			Commercial (CCF)	Commercial Indoor Use (Annualized 90% of January Total)			
	JAN (CCF)	AFY	AFY/Service		AFY	GPD/Service	%		AFY	GPD/Service	%		AFY	GPD/Service	%	
1980	265,316	6,578	0.20	0.00	6,578	178	49%	35,925	891	2,840	72%	144,990	3,595	860	70%	11,064
1981	280,458	6,954	0.21	0.00	6,954	187	50%	42,834	1,062	3,362	75%	153,488	3,805	906	72%	11,821
1982	276,271	6,850	0.21	0.00	6,850	184	54%	44,470	1,103	3,503	74%	144,078	3,572	847	73%	11,524
1983	278,353	6,901	0.21	0.00	6,901	185	53%	54,572	1,353	4,194	78%	153,301	3,801	889	70%	12,055
1984	281,544	6,980	0.21	0.00	6,980	187	45%	56,428	1,399	4,136	75%	167,110	4,143	957	70%	12,523
1985	281,802	6,987	0.21	0.00	6,987	186	48%	58,731	1,456	4,276	72%	162,555	4,030	922	68%	12,473
1986	292,433	7,250	0.22	0.00	7,250	193	50%	60,848	1,509	4,373	71%	174,058	4,315	983	71%	13,075
1987	328,107	8,135	0.24	0.00	8,135	215	53%	71,748	1,779	5,090	79%	186,433	4,622	1,045	73%	14,536
1988	323,237	8,014	0.24	0.00	8,014	211	53%	75,261	1,866	5,272	82%	181,318	4,495	1,025	72%	14,376
1989	332,166	8,236	0.24	0.00	8,236	216	57%	75,200	1,864	5,218	82%	187,086	4,638	1,049	78%	14,738
1990	323,549	8,022	0.23	0.00	8,022	209	54%	71,061	1,762	4,931	76%	176,191	4,368	977	73%	14,152
1991	346,688	8,596	0.25	0.00	8,596	221	70%	79,488	1,971	5,364	88%	185,482	4,599	1,023	86%	15,165
1992	298,235	7,394	0.21	0.00	7,394	188	56%	72,068	1,787	4,762	78%	154,594	3,833	856	74%	13,014
1993	304,340	7,546	0.21	0.00	7,546	191	55%	73,757	1,829	4,802	82%	145,390	3,605	808	71%	12,979
1994	314,572	7,799	0.22	0.00	7,799	197	54%	71,518	1,773	4,629	80%	147,386	3,654	825	70%	13,227
1995	312,408	7,746	0.22	0.00	7,746	195	53%	68,171	1,690	4,425	78%	147,643	3,661	827	68%	13,096
1996	333,266	8,263	0.23	0.00	8,263	206	53%	73,103	1,812	4,816	79%	157,529	3,906	892	65%	13,981
1997	335,900	8,328	0.23	0.00	8,328	207	50%	69,808	1,731	4,599	76%	154,450	3,829	881	62%	13,888
1998	340,625	8,445	0.23	0.00	8,445	210	58%	65,163	1,616	4,280	73%	163,468	4,053	935	69%	14,114
1999	364,619	9,040	0.25	0.00	9,040	223	57%	69,783	1,730	4,597	75%	164,578	4,080	938	72%	14,851
2000	374,729	9,291	0.26	0.00	9,291	228	56%	73,566	1,824	4,846	76%	167,013	4,141	944	68%	15,256
2001	392,014	9,719	0.27	0.00	9,719	238	57%	74,644	1,851	4,893	78%	185,482	4,599	1,045	76%	16,169
2002	375,979	9,322	0.26	0.00	9,322	229	53%	75,639	1,875	5,063	75%	161,786	4,011	908	65%	15,208
2003	381,646	9,462	0.26	0.00	9,462	233	57%	74,883	1,857	5,073	83%	177,534	4,402	990	73%	15,721
2004	375,412	9,308	0.26	0.00	9,308	228	54%	67,661	1,678	4,594	74%	146,239	3,626	812	61%	14,611
2005	380,220	9,427	0.26	0.00	9,427	230	58%	72,266	1,792	4,912	82%	151,782	3,763	842	63%	14,982
2006	398,553	9,881	0.27	0.00	9,881	239	62%	66,833	1,657	4,608	82%	167,226	4,146	912	69%	15,685
2007	376,430	9,333	0.25	0.00	9,333	226	57%	58,680	1,455	4,072	73%	163,820	4,062	915	64%	14,850
2008	351,416	8,713	0.24	0.00	8,713	215	56%	50,730	1,258	3,255	63%	170,419	4,225	963	66%	14,196
2009	340,338	8,438	0.24	0.00	8,438	210	58%	60,747	1,506	3,694	77%	158,527	3,930	901	65%	13,875
2010	---	---	---	---	8,679	209	55%	---	1,938	4,482	77%	---	4,041	923	65%	14,658
2015	---	---	---	---	8,795	209	55%	---	2,006	4,482	77%	---	4,089	923	65%	14,890
2020	---	---	---	---	8,913	209	55%	---	2,076	4,482	77%	---	4,138	923	65%	15,127
2025	---	---	---	---	9,032	209	55%	---	2,149	4,482	77%	---	4,187	923	65%	15,368
2030	---	---	---	---	9,153	209	55%	---	2,224	4,482	77%	---	4,237	923	65%	15,614
2035	---	---	---	---	9,275	209	55%	---	2,302	4,482	77%	---	4,288	923	65%	15,865
2040	---	---	---	---	9,399	209	55%	---	2,382	4,482	77%	---	4,339	923	65%	16,120

California Water Service Company - Stockton District

Water Supply and Demand Analysis and Projections

Comparison of Projected Demand and Conservation Savings Between SBx7-7 Compliance Targets and Actual Proposed Programs

Year	SBx7-7 Compliance Target (gpcd)	Anticipated GPCD with Proposed Programs*	Estimated Population	Undadjusted Baseline Demand (AFY)	SBx7-7 Compliance Target Demand (AFY)	Anticipated Demand with Proposed Programs (AFY)	Compliance Target Savings Requirement (AFY)	Savings Due to Proposed Programs (AFY)
2005-2009 Average	175	175	162,336	31,774	31,774	31,774	0	0
2010	175	175	162,860	31,877	31,877	31,877	0	0
2011	175	172	163,340	31,971	31,944	31,470	27	501
2012	174	170	163,720	32,045	31,991	31,176	54	869
2013	174	169	164,100	32,120	32,038	31,065	81	1,055
2014	174	168	164,480	32,194	32,085	30,953	109	1,241
2015	174	168	164,860	32,268	32,132	31,024	136	1,244
2016	172	167	165,250	32,345	31,875	30,986	470	1,358
2017	170	167	165,630	32,419	31,614	30,946	805	1,473
2018	169	166	166,020	32,495	31,354	30,908	1,141	1,588
2019	167	166	166,410	32,572	31,092	30,868	1,480	1,703
2020	165	165	166,810	32,650	30,830	30,830	1,820	1,820
2021	165	165	167,200	32,726	30,903	30,903	1,824	1,824
2022	165	165	167,600	32,805	30,976	30,976	1,828	1,828
2023	165	165	168,000	32,883	31,050	31,050	1,833	1,833
2024	165	165	168,400	32,961	31,124	31,124	1,837	1,837
2025	165	165	168,800	33,040	31,198	31,198	1,841	1,841
2026	165	165	169,210	33,120	31,274	31,274	1,846	1,846
2027	165	165	169,620	33,200	31,350	31,350	1,850	1,850
2028	165	165	170,030	33,280	31,426	31,426	1,855	1,855
2029	165	165	170,440	33,361	31,501	31,501	1,859	1,859
2030	165	165	170,850	33,441	31,577	31,577	1,864	1,864
2031	165	165	171,270	33,523	31,655	31,655	1,868	1,868
2032	165	165	171,680	33,603	31,731	31,731	1,873	1,873
2033	165	165	172,100	33,685	31,808	31,808	1,877	1,877
2034	165	165	172,530	33,770	31,888	31,888	1,882	1,882
2035	165	165	172,950	33,852	31,965	31,965	1,887	1,887
2036	165	165	173,380	33,936	32,045	32,045	1,891	1,891
2037	165	165	173,810	34,020	32,124	32,124	1,896	1,896
2038	165	165	174,240	34,104	32,204	32,204	1,901	1,901
2039	165	165	174,670	34,188	32,283	32,283	1,905	1,905
2040	165	165	175,110	34,275	32,364	32,364	1,910	1,910

*Note: The district is projected to achieve its district-specific 2015 SBx7-7 compliance target through a combination of passive and active savings. For the purpose of this analysis it is assumed that there will be a linear reduction in GPCD from 2015-2020 to achieve the district-specific 2020 SBx7-7 compliance target. GPCD will remain flat from 2020 through 2040.