

**Water Resources Planning Department**

**Water Supply / Demand Analysis and Projections**  
**for**  
**Selma District**

**2010**

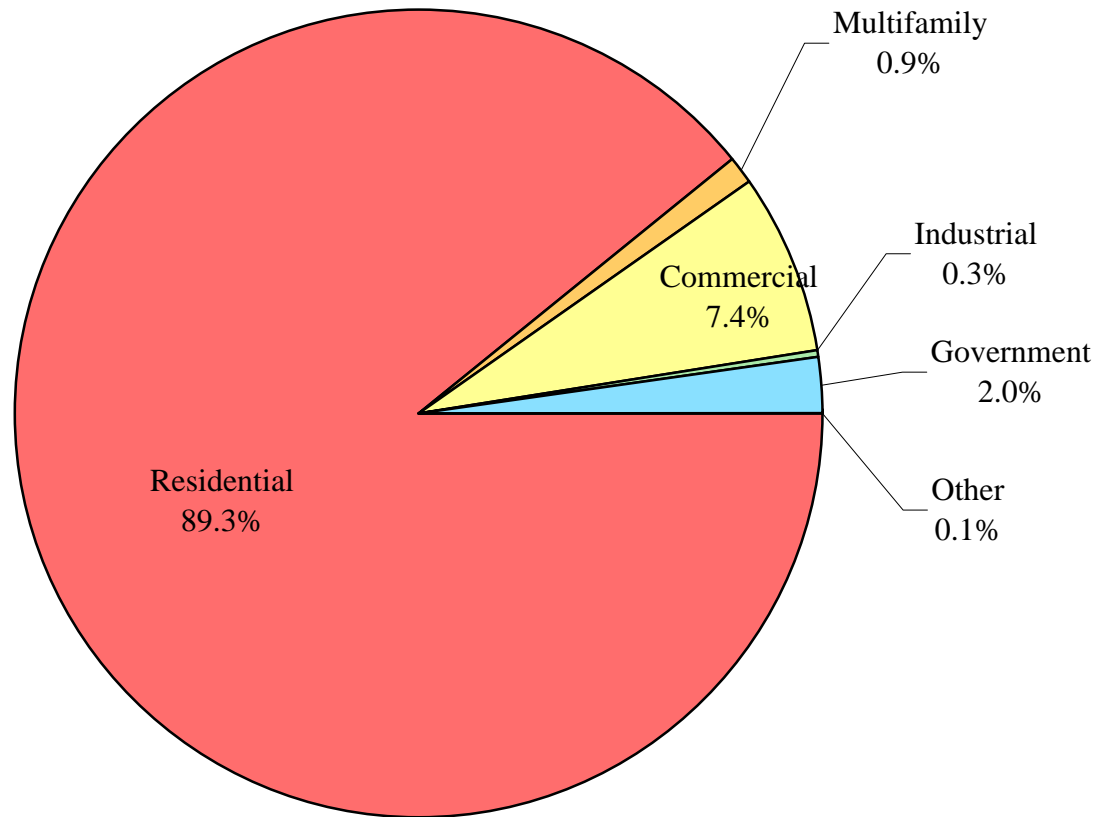


## Table of Contents for Worksheets

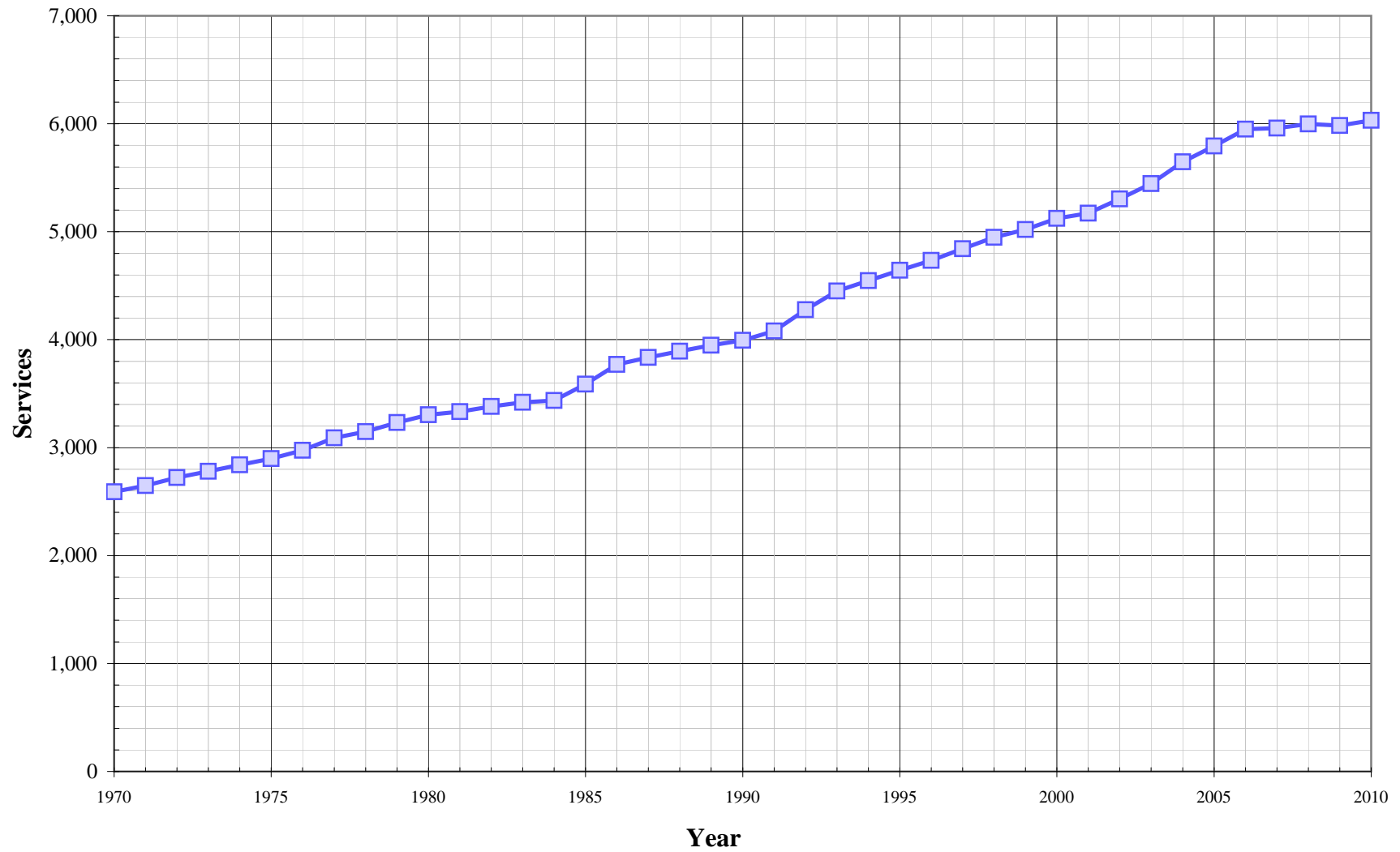
Worksheet	Title
1	Annual Services
2	Service Growth Percentage
3	District Sales (ccf)
4	District Sales (AF)
5	Demand per Service (Gallons/Service/Year)
6	Demand per Service (Gallons per Day)
7	Percentage Change in Annual Demand
8	Percentage of Total Sales
9	Percentage of Total Demand
10	Demand Scenario 1 (Low Demand Projection)
11	Demand Scenario 2 (Average Demand Projection)
12	Demand Scenario 3 (High Demand Projection)
13	Demand Scenario 4 (Alternate Service Projection)
14	not used
15	Actual & Projected Annual Average Services
16	Actual & Projected Demand in Acre-Feet
17	Projected Annual Supply by Source
18	Historical and Projected Average Day, Maximum Day, and Peak Demands
19	Population as of the 2000 Average Annual Services
20	Temperature & Rainfall History
21	Groundwater Facilities (if available)
22	Per Capita Water Demand Calculation
23	Indoor/Outdoor Water Usage
24	SB-7 Compliance Demand Worksheet

# Selma District

## Distribution of Services (2010)



# Selma District Historical Services



**California Water Service Company - Selma District**  
**Water Supply and Demand Analysis and Projections**  
**Average Annual Services**

Worksheet 1

Year	Total S.F.	Metered	Flat Rate	Multi-Res.		Commercial	Industrial	Government	Other	Total	Annual Change
	Residential	Residential	Residential	Multifamily	units						
1970	2,273	558	1,715	0	0	277	9	32	0	2,591	
1975	2,537	546	1,991	10	159	308	10	33	0	2,898	58
1980	2,901	592	2,309	14	285	340	12	36	1	3,304	73
1981	2,932	597	2,335	14	299	336	13	36	1	3,332	28
1982	2,972	612	2,360	15	370	344	13	37	1	3,382	50
1983	2,999	635	2,364	15	370	353	13	38	1	3,419	37
1984	3,010	652	2,358	15	370	359	13	38	1	3,436	17
1985	3,156	664	2,492	16	395	361	12	41	1	3,587	151
1986	3,320	714	2,606	18	461	375	12	45	1	3,771	184
1987	3,367	725	2,642	21	534	385	12	49	1	3,835	64
1988	3,410	728	2,682	22	543	396	12	51	2	3,893	58
1989	3,453	734	2,719	26	574	402	12	54	2	3,949	56
1990	3,500	742	2,758	27	533	396	12	56	2	3,993	44
1991	3,585	760	2,825	33	646	392	12	56	2	4,080	87
1992	3,768	907	2,861	36	706	399	13	59	2	4,277	197
1993	3,928	1,084	2,844	36	810	407	13	61	5	4,450	173
1994	4,017	1,180	2,837	36	811	414	13	65	2	4,547	97
1995	4,094	1,265	2,829	37	849	424	15	71	2	4,643	96
1996	4,174	1,352	2,822	37	868	429	15	75	4	4,734	91
1997	4,275	1,458	2,817	38	849	434	16	77	2	4,842	108
1998	4,376	1,569	2,807	39	854	435	16	79	2	4,947	105
1999	4,429	1,629	2,800	39	865	447	17	82	5	5,019	72
2000	4,513	1,718	2,795	39	858	463	18	85	6	5,124	105
2001	4,553	1,765	2,788	41	925	468	19	88	3	5,172	48
2002	4,681	1,876	2,805	41	936	466	19	91	5	5,303	131
2003	4,820	2,042	2,778	41	995	464	19	93	8	5,445	142
2004	5,018	2,247	2,771	41	1,032	464	17	94	12	5,646	201
2005	5,160	2,389	2,771	41	1,036	469	17	97	10	5,794	148
2006	5,306	2,554	2,752	41	1,066	470	17	104	12	5,950	156
2007	5,355	2,622	2,733	41	968	429	17	105	12	5,959	9
2008	5,355	2,649	2,706	48	976	454	16	115	11	5,999	40
2009	5,344	2,676	2,668	51	1,052	442	18	122	7	5,984	-15
2010	5,386	2,851	2,535	52		444	19	122	8	6,031	47
5 Yr. Avg.	5,304	2,578	2,726	44	1,020	453	17	109	10	5,937	68
10 Yr. Avg.	5,011	2,254	2,757	43	984	459	18	99	9	5,638	97
20 Yr. Avg.	4,513	1,724	2,788	39	882	438	16	84	6	5,095	102

Five Year Average is from 2005 through 2009.

Ten Year Average is from 2000 through 2009.

**California Water Service Company - Selma District**  
**Water Supply and Demand Analysis and Projections**  
**Service Growth Percentage**

Worksheet 2

Year	Total S.F. Residential	Metered Residential	Flat Rate Residential	Multi-Res. Multifamily	Multi-Res. units	Commercial	Industrial	Government	Other	Total
1981	1.07%	0.84%	1.13%	0.00%	4.91%	-1.18%	8.33%	0.00%	0.00%	0.85%
1982	1.36%	2.51%	1.07%	7.14%	23.75%	2.38%	0.00%	2.78%	0.00%	1.50%
1983	0.91%	3.76%	0.17%	0.00%	0.00%	2.62%	0.00%	2.70%	0.00%	1.09%
1984	0.37%	2.68%	-0.25%	0.00%	0.00%	1.70%	0.00%	0.00%	0.00%	0.50%
1985	4.85%	1.84%	5.68%	6.67%	6.76%	0.56%	-7.69%	7.89%	0.00%	4.39%
1986	5.20%	7.53%	4.57%	12.50%	16.71%	3.88%	0.00%	9.76%	0.00%	5.13%
1987	1.42%	1.54%	1.38%	16.67%	15.84%	2.67%	0.00%	8.89%	0.00%	1.70%
1988	1.28%	0.41%	1.51%	4.76%	1.69%	2.86%	0.00%	4.08%	100.00%	1.51%
1989	1.26%	0.82%	1.38%	18.18%	5.71%	1.52%	0.00%	5.88%	0.00%	1.44%
1990	1.36%	1.09%	1.43%	3.85%	-7.14%	-1.49%	0.00%	3.70%	0.00%	1.11%
1991	2.43%	2.43%	2.43%	22.22%	21.20%	-1.01%	0.00%	0.00%	0.00%	2.18%
1992	5.10%	19.34%	1.27%	9.09%	9.29%	1.79%	8.33%	5.36%	0.00%	4.83%
1993	4.25%	19.51%	-0.59%	0.00%	14.73%	2.01%	0.00%	3.39%	150.00%	4.04%
1994	2.27%	8.86%	-0.25%	0.00%	0.12%	1.72%	0.00%	6.56%	-60.00%	2.18%
1995	1.92%	7.20%	-0.28%	2.78%	4.69%	2.42%	15.38%	9.23%	0.00%	2.11%
1996	1.95%	6.88%	-0.25%	0.00%	2.24%	1.18%	0.00%	5.63%	100.00%	1.96%
1997	2.42%	7.84%	-0.18%	2.70%	-2.19%	1.17%	6.67%	2.67%	-50.00%	2.28%
1998	2.36%	7.61%	-0.35%	2.63%	0.59%	0.23%	0.00%	2.60%	0.00%	2.17%
1999	1.21%	3.82%	-0.25%	0.00%	1.29%	2.76%	6.25%	3.80%	150.00%	1.46%
2000	1.90%	5.46%	-0.18%	0.00%	-0.81%	3.58%	5.88%	3.66%	20.00%	2.09%
2001	0.89%	2.74%	-0.25%	5.13%	7.81%	1.08%	5.56%	3.53%	-50.00%	0.94%
2002	2.81%	6.29%	0.61%	0.00%	1.19%	-0.43%	0.00%	3.41%	66.67%	2.53%
2003	2.97%	8.85%	-0.96%	0.00%	6.30%	-0.43%	0.00%	2.20%	60.00%	2.68%
2004	4.11%	10.04%	-0.25%	0.00%	3.72%	0.00%	-10.53%	1.08%	50.00%	3.69%
2005	2.83%	6.32%	0.00%	0.00%	0.39%	1.08%	0.00%	3.19%	-16.67%	2.62%
2006	2.83%	6.91%	-0.69%	0.00%	2.90%	0.21%	0.00%	7.22%	20.00%	2.69%
2007	0.92%	2.66%	-0.69%	0.00%	-9.19%	-8.72%	0.00%	0.96%	0.00%	0.15%
2008	0.00%	1.03%	-0.99%	17.07%	0.83%	5.83%	-5.88%	9.52%	-8.33%	0.67%
2009	-0.21%	1.02%	-1.40%	6.25%	7.79%	-2.64%	12.50%	6.09%	-36.36%	-0.25%
2010	0.79%	6.54%	-4.99%	1.96%	-100.00%	0.45%	5.56%	0.00%	14.29%	0.79%
5 Yr. Avg.	1.27%	3.59%	-0.75%	4.66%	0.54%	-0.85%	1.32%	5.40%	-8.27%	1.18%
10 Yr. Avg.	1.91%	5.13%	-0.48%	2.85%	2.09%	-0.04%	0.75%	4.09%	10.53%	1.78%

Five Year Average is from 2005 through 2009.

Ten Year Average is from 2000 through 2009.

**California Water Service Company - Selma District**  
**Water Supply and Demand Analysis and Projections**  
**Sales (ccf)**

Worksheet 3

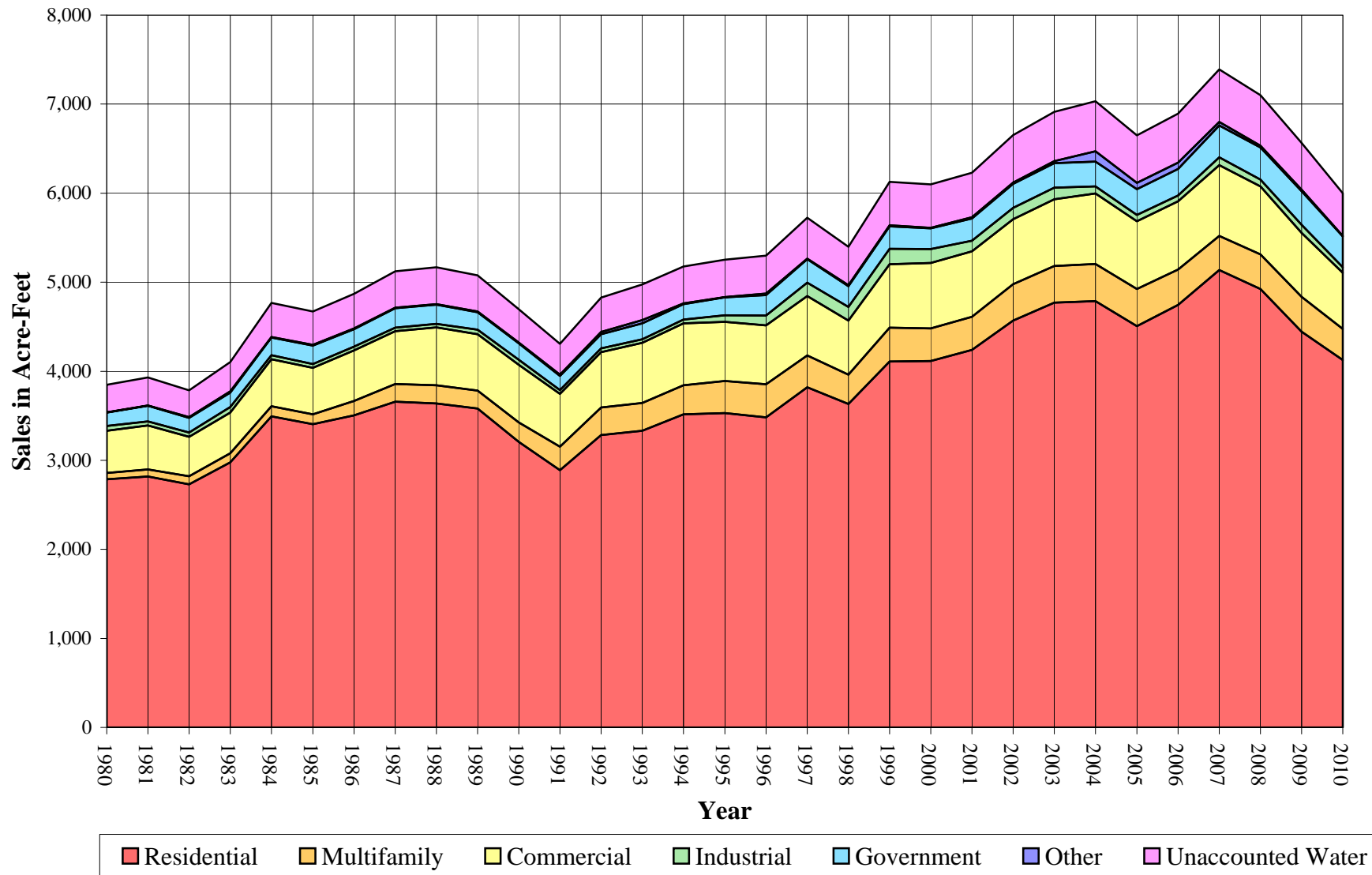
Year	Residential			Multifamily	Commercial	Industrial	Government	Other	Unaccounted Water	Total(ccf) Sales	Total(ccf) Production	Total(kgal) Production
	Total	Metered	Flat Rate									
1980	1,214,077	132,158	1,081,919	31,343	206,211	22,682	66,185	1,411	134,079	1,541,909	1,675,988	1,253,726
1981	1,227,728	132,103	1,095,625	34,585	214,898	19,230	77,074	1,529	136,960	1,575,044	1,712,004	1,280,668
1982	1,188,979	130,700	1,058,279	40,373	192,224	21,233	71,197	3,582	131,964	1,517,588	1,649,552	1,233,951
1983	1,297,018	138,986	1,158,032	44,294	198,860	26,917	71,200	5,874	142,971	1,644,163	1,787,134	1,336,869
1984	1,521,940	153,045	1,368,895	49,239	229,549	20,273	86,706	2,785	166,130	1,910,492	2,076,622	1,553,421
1985	1,483,294	148,718	1,334,576	48,636	226,946	18,139	91,057	3,591	162,753	1,871,663	2,034,416	1,521,849
1986	1,526,561	176,580	1,349,981	70,490	247,223	18,119	86,002	3,720	169,749	1,952,115	2,121,865	1,587,265
1987	1,593,504	175,089	1,418,415	86,329	258,271	17,545	94,834	2,555	178,525	2,053,038	2,231,563	1,669,325
1988	1,585,399	187,023	1,398,376	88,504	282,364	17,831	93,949	2,623	180,058	2,070,670	2,250,729	1,683,662
1989	1,560,167	179,914	1,380,253	87,422	276,337	21,502	85,174	3,957	176,918	2,034,559	2,211,477	1,654,300
1990	1,396,829	179,282	1,217,547	95,834	281,041	25,423	80,434	3,214	163,720	1,882,775	2,046,494	1,530,884
1991	1,258,413	172,727	1,085,686	115,194	257,659	18,517	69,794	6,453	150,090	1,726,030	1,876,120	1,403,435
1992	1,430,224	219,745	1,210,479	134,874	271,081	17,575	70,211	10,107	168,180	1,934,072	2,102,252	1,572,594
1993	1,451,006	275,646	1,175,360	135,976	294,428	17,927	77,776	16,023	173,316	1,993,136	2,166,452	1,620,619
1994	1,531,656	306,347	1,225,309	142,074	302,514	18,666	76,092	3,061	180,353	2,074,063	2,254,417	1,686,421
1995	1,538,220	335,018	1,203,202	156,285	289,127	32,059	88,022	928	183,012	2,104,641	2,287,654	1,711,284
1996	1,516,900	376,286	1,140,614	162,208	287,576	47,846	100,871	7,479	184,598	2,122,880	2,307,479	1,726,114
1997	1,664,329	436,058	1,228,271	154,908	290,708	65,850	114,651	3,132	199,442	2,293,578	2,493,019	1,864,908
1998	1,582,524	411,897	1,170,627	142,627	264,532	66,993	101,773	4,520	188,084	2,162,969	2,351,053	1,758,710
1999	1,789,798	492,533	1,297,265	165,728	310,651	74,705	110,530	4,355	213,545	2,455,767	2,669,312	1,996,784
2000	1,792,752	513,214	1,279,538	159,526	319,733	68,207	101,237	2,875	212,550	2,444,330	2,656,881	1,987,485
2001	1,847,063	542,799	1,304,264	161,658	320,123	51,606	108,871	6,612	217,038	2,495,933	2,712,970	2,029,443
2002	1,990,687	598,244	1,392,443	177,761	316,969	55,974	117,057	7,228	231,798	2,665,676	2,897,474	2,167,461
2003	2,078,413	633,661	1,444,752	179,147	326,126	56,853	119,957	9,580	240,876	2,770,076	3,010,952	2,252,349
2004	2,085,419	709,550	1,375,869	182,105	344,537	34,591	121,629	49,750	245,046	2,818,031	3,063,077	2,291,341
2005	1,962,891	720,125	1,242,766	181,990	331,225	30,446	126,202	31,434	231,668	2,664,188	2,895,856	2,166,251
2006	2,067,470	789,118	1,278,352	172,322	333,978	28,414	129,987	30,099	240,197	2,762,270	3,002,468	2,246,002
2007	2,236,903	852,448	1,384,455	167,793	346,286	38,329	154,773	17,799	257,555	2,961,883	3,219,438	2,408,307
2008	2,144,249	854,918	1,289,331	169,890	332,809	33,591	156,197	8,784	247,436	2,845,520	3,092,956	2,313,692
2009	1,936,399	808,212	1,128,187	170,547	312,491	39,703	164,099	6,999	228,716	2,630,238	2,858,954	2,138,646
2010	1,797,892	781,893	1,015,999	151,892	273,565	27,919	150,363	2,749	209,076	2,404,380	2,613,456	1,955,001
5 Yr. Avg.	2,069,582	804,964	1,264,618	172,508	331,358	34,097	146,252	19,023	241,115	2,772,820	3,054,759	2,285,119
10 Yr. Avg.	2,014,225	702,229	1,311,996	172,274	328,428	43,771	130,001	17,116	235,288	2,705,814	2,922,138	2,185,912

Five year average = 2005 through 2009.

Ten year average = 2000 through 2009.

Flat Rate Residential Sales estimated by setting "Unaccounted for Water" at 8.0% of total production.

# Selma District Historical Sales





**California Water Service Company - Selma District**  
**Water Supply and Demand Analysis and Projections**  
**Sales (AF)**

Year	Residential			Multifamily	Commercial	Industrial	Government	Other	Unaccounted Water	Total(AF) Sales	Total(AF) Production	Total(Mgal) Production
	Total	Metered	Flat Rate									
1980	2,787	303	2,484	72	473	52	152	3	308	3,540	3,848	1,254
1981	2,818	303	2,515	79	493	44	177	4	314	3,616	3,930	1,281
1982	2,730	300	2,429	93	441	49	163	8	303	3,484	3,787	1,234
1983	2,978	319	2,658	102	457	62	163	13	328	3,774	4,103	1,337
1984	3,494	351	3,143	113	527	47	199	6	381	4,386	4,767	1,553
1985	3,405	341	3,064	112	521	42	209	8	374	4,297	4,670	1,522
1986	3,505	405	3,099	162	568	42	197	9	390	4,481	4,871	1,587
1987	3,658	402	3,256	198	593	40	218	6	410	4,713	5,123	1,669
1988	3,640	429	3,210	203	648	41	216	6	413	4,754	5,167	1,684
1989	3,582	413	3,169	201	634	49	196	9	406	4,671	5,077	1,654
1990	3,207	412	2,795	220	645	58	185	7	376	4,322	4,698	1,531
1991	2,889	397	2,492	264	592	43	160	15	345	3,962	4,307	1,403
1992	3,283	504	2,779	310	622	40	161	23	386	4,440	4,826	1,573
1993	3,331	633	2,698	312	676	41	179	37	398	4,576	4,973	1,621
1994	3,516	703	2,813	326	694	43	175	7	414	4,761	5,175	1,686
1995	3,531	769	2,762	359	664	74	202	2	420	4,832	5,252	1,711
1996	3,482	864	2,618	372	660	110	232	17	424	4,873	5,297	1,726
1997	3,821	1,001	2,820	356	667	151	263	7	458	5,265	5,723	1,865
1998	3,633	946	2,687	327	607	154	234	10	432	4,965	5,397	1,759
1999	4,109	1,131	2,978	380	713	171	254	10	490	5,638	6,128	1,997
2000	4,116	1,178	2,937	366	734	157	232	7	488	5,611	6,099	1,987
2001	4,240	1,246	2,994	371	735	118	250	15	498	5,730	6,228	2,029
2002	4,570	1,373	3,197	408	728	128	269	17	532	6,120	6,652	2,167
2003	4,771	1,455	3,317	411	749	131	275	22	553	6,359	6,912	2,252
2004	4,787	1,629	3,159	418	791	79	279	114	563	6,469	7,032	2,291
2005	4,506	1,653	2,853	418	760	70	290	72	532	6,116	6,648	2,166
2006	4,746	1,812	2,935	396	767	65	298	69	551	6,341	6,893	2,246
2007	5,135	1,957	3,178	385	795	88	355	41	591	6,800	7,391	2,408
2008	4,923	1,963	2,960	390	764	77	359	20	568	6,532	7,100	2,314
2009	4,445	1,855	2,590	392	717	91	377	16	525	6,038	6,563	2,139
2010	4,127	1,795	2,332	349	628	64	345	6	480	5,520	6,000	1,955
5 Yr. Avg.	4,751	1,848	2,903	396	761	78	336	44	554	6,366	6,919	2,255
10 Yr. Avg.	4,624	1,612	3,012	395	754	100	298	39	540	6,212	6,752	2,200

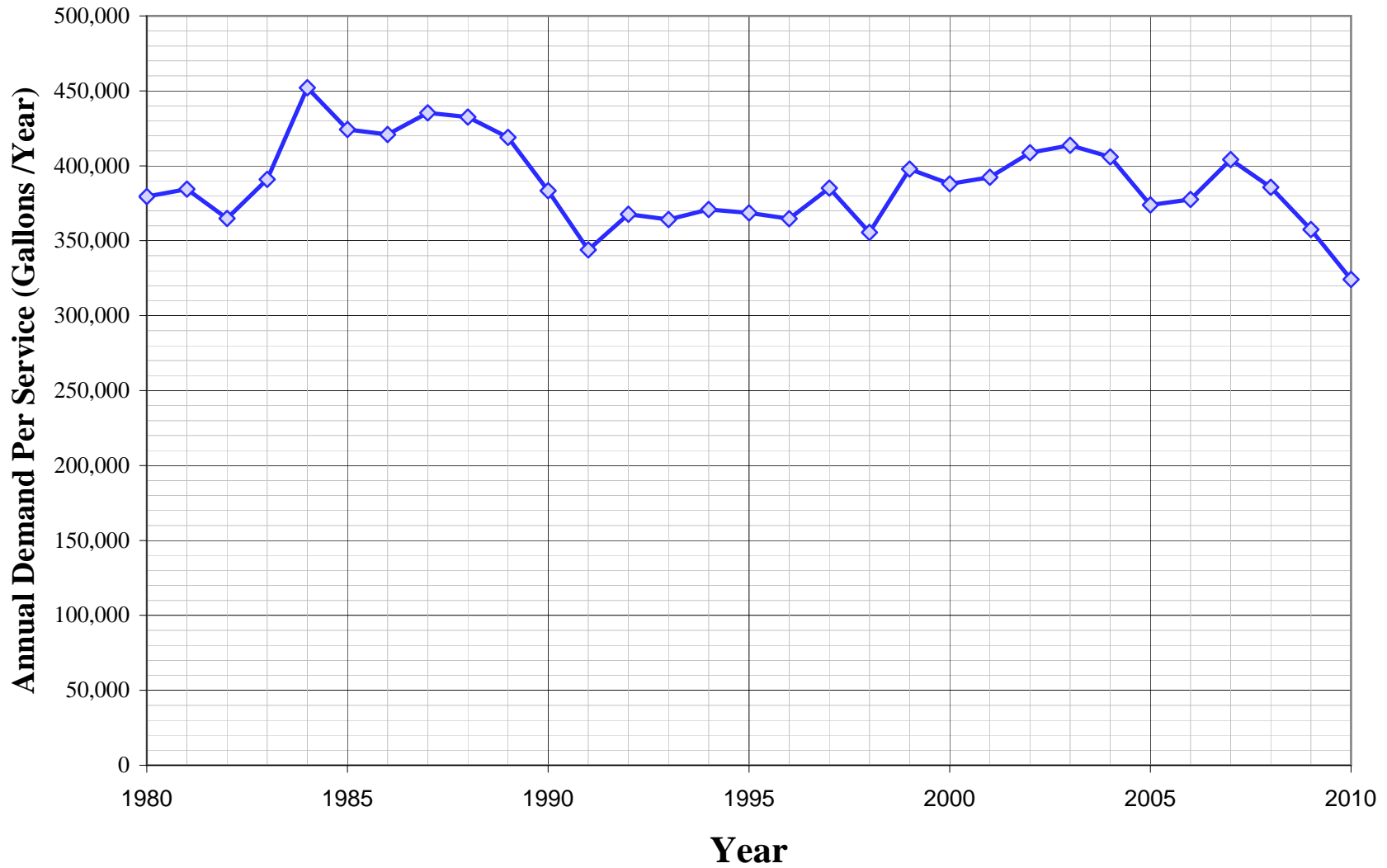
Five year average = 2005 through 2009.

Ten year average = 2000 through 2009.

Flat Rate Residential Sales estimated by setting "Unaccounted for Water" at 8.0% of total production.

# Selma District

## Historical Annual Demand per Service



**California Water Service Company - Selma District**  
**Water Supply and Demand Analysis and Projections**  
**Demand per Service (Gallons per Year)**

Year	Residential			Multi-Residential		Commercial	Industrial	Government	Total Other	Unaccounted/ Total Services	Combined
	Total	Metered	Flat Rate	(service)	(unit)						
1980	313,062	166,995	350,512	1,674,728	82,267	453,696	1,413,943	1,375,273	1,055,501	30,357	379,457
1981	313,235	165,527	351,000	1,847,956	86,526	478,437	1,106,542	1,601,538	1,143,772	30,748	384,354
1982	299,266	159,756	335,444	2,013,407	81,625	418,004	1,221,799	1,439,434	2,679,522	29,189	364,858
1983	323,520	163,730	366,442	2,208,948	89,552	421,410	1,548,870	1,401,613	4,394,057	31,281	391,012
1984	378,236	175,591	434,268	2,455,555	99,550	478,314	1,166,558	1,706,858	2,083,325	36,168	452,102
1985	351,578	167,543	400,615	2,273,891	92,107	470,270	1,130,743	1,661,351	2,686,255	33,941	424,268
1986	343,960	185,001	387,512	2,929,455	114,382	493,162	1,129,496	1,429,644	2,782,753	33,673	420,914
1987	354,031	180,656	401,608	3,075,171	120,934	501,819	1,093,714	1,447,771	1,911,273	34,823	435,287
1988	347,789	192,174	390,029	3,009,345	121,926	533,391	1,111,543	1,378,014	981,070	34,599	432,484
1989	337,992	183,358	379,736	2,515,239	113,931	514,215	1,340,385	1,179,900	1,480,021	33,513	418,916
1990	298,543	180,744	330,235	2,655,141	134,501	530,892	1,584,810	1,074,443	1,202,120	30,671	383,392
1991	262,583	170,012	287,487	2,611,246	133,392	491,690	1,154,307	932,313	2,413,590	27,518	343,979
1992	283,939	181,236	316,498	2,802,577	142,908	508,227	1,011,309	890,195	3,780,281	29,415	367,686
1993	276,331	190,219	309,153	2,825,476	125,577	541,149	1,031,564	953,779	2,397,207	29,135	364,184
1994	285,227	194,206	323,086	2,952,187	131,047	546,609	1,074,088	875,704	1,144,894	29,671	370,887
1995	281,062	198,111	318,154	3,159,711	137,702	510,099	1,598,787	927,395	347,096	29,486	368,573
1996	271,854	208,196	302,353	3,279,460	139,793	501,449	2,386,086	1,006,090	1,398,670	29,170	364,621
1997	291,229	223,727	326,166	3,049,454	136,489	501,071	3,078,702	1,113,830	1,171,449	30,812	385,152
1998	270,523	196,380	311,966	2,735,703	124,933	454,905	3,132,140	963,690	1,690,598	28,441	355,510
1999	302,294	226,176	346,579	3,178,799	143,322	519,873	3,287,249	1,008,319	651,553	31,828	397,845
2000	297,158	223,464	342,455	3,059,840	139,084	516,581	2,834,577	890,948	358,442	31,030	387,878
2001	303,470	230,052	349,949	2,949,478	130,734	511,685	2,031,788	925,468	1,648,707	31,391	392,390
2002	318,124	238,549	371,344	3,243,280	142,067	508,818	2,203,761	962,250	1,081,384	32,698	408,724
2003	322,565	232,131	389,039	3,268,568	134,685	525,774	2,238,368	964,883	895,792	33,092	413,655
2004	310,881	236,217	371,426	3,322,537	132,000	555,456	1,522,110	967,924	3,101,299	32,467	405,834
2005	284,563	225,488	335,494	3,320,439	131,407	528,302	1,339,717	973,254	2,351,427	29,910	373,878
2006	291,477	231,128	347,483	3,144,044	120,925	531,559	1,250,303	934,971	1,876,301	30,198	377,479
2007	312,478	243,202	378,940	3,061,412	129,667	603,823	1,686,593	1,102,650	1,109,548	32,332	404,146
2008	299,535	241,421	356,425	2,647,637	130,212	548,367	1,570,488	1,016,030	597,354	30,854	385,680
2009	271,057	225,928	316,320	2,501,530	121,272	528,868	1,649,995	1,006,185	747,945	28,592	357,394
2010	249,706	205,155	299,811	2,185,060		460,903	1,099,203	921,962	257,049	25,933	324,159
5 Yr. Avg.	291,822	233,433	346,933	2,935,012	126,697	548,184	1,499,419	1,006,618	1,336,515	30,377	379,716
10 Yr. Avg.	301,131	232,758	355,888	3,051,876	131,205	535,923	1,832,770	974,456	1,376,820	31,256	390,706

Five year average is from years 2005 through 2009.

Ten year average is from years 2000 through 2009.

## California Water Service Company - Selma District

Worksheet 6

### Water Supply and Demand Analysis and Projections

#### Demand per Service (Gallons per Day)

Year	Residential			Multi-Residential		Commercial	Industrial	Government	Total Other	Unaccounted/ Total Services	Combined
	Total	Metered	Flat Rate	(service)	(unit)						
1980	858	458	960	4,588	225	1,243	3,874	3,768	2,892	83	1,040
1981	858	453	962	5,063	237	1,311	3,032	4,388	3,134	84	1,053
1982	820	438	919	5,516	224	1,145	3,347	3,944	7,341	80	1,000
1983	886	449	1,004	6,052	245	1,155	4,243	3,840	12,039	86	1,071
1984	1,036	481	1,190	6,728	273	1,310	3,196	4,676	5,708	99	1,239
1985	963	459	1,098	6,230	252	1,288	3,098	4,552	7,360	93	1,162
1986	942	507	1,062	8,026	313	1,351	3,095	3,917	7,624	92	1,153
1987	970	495	1,100	8,425	331	1,375	2,996	3,966	5,236	95	1,193
1988	953	527	1,069	8,245	334	1,461	3,045	3,775	2,688	95	1,185
1989	926	502	1,040	6,891	312	1,409	3,672	3,233	4,055	92	1,148
1990	818	495	905	7,274	368	1,454	4,342	2,944	3,293	84	1,050
1991	719	466	788	7,154	365	1,347	3,162	2,554	6,613	75	942
1992	778	497	867	7,678	392	1,392	2,771	2,439	10,357	81	1,007
1993	757	521	847	7,741	344	1,483	2,826	2,613	6,568	80	998
1994	781	532	885	8,088	359	1,498	2,943	2,399	3,137	81	1,016
1995	770	543	872	8,657	377	1,398	4,380	2,541	951	81	1,010
1996	745	570	828	8,985	383	1,374	6,537	2,756	3,832	80	999
1997	798	613	894	8,355	374	1,373	8,435	3,052	3,209	84	1,055
1998	741	538	855	7,495	342	1,246	8,581	2,640	4,632	78	974
1999	828	620	950	8,709	393	1,424	9,006	2,763	1,785	87	1,090
2000	814	612	938	8,383	381	1,415	7,766	2,441	982	85	1,063
2001	831	630	959	8,081	358	1,402	5,567	2,536	4,517	86	1,075
2002	872	654	1,017	8,886	389	1,394	6,038	2,636	2,963	90	1,120
2003	884	636	1,066	8,955	369	1,440	6,133	2,644	2,454	91	1,133
2004	852	647	1,018	9,103	362	1,522	4,170	2,652	8,497	89	1,112
2005	780	618	919	9,097	360	1,447	3,670	2,666	6,442	82	1,024
2006	799	633	952	8,614	331	1,456	3,425	2,562	5,141	83	1,034
2007	856	666	1,038	8,387	355	1,654	4,621	3,021	3,040	89	1,107
2008	821	661	977	7,254	357	1,502	4,303	2,784	1,637	85	1,057
2009	743	619	867	6,854	332	1,449	4,521	2,757	2,049	78	979
2010	684	562	821	5,986		1,263	3,012	2,526	704	71	888
5 Yr. Avg.	800	640	951	8,041	347	1,502	4,108	2,758	3,662	83	1,040
10 Yr. Avg.	825	638	975	8,361	359	1,468	5,021	2,670	3,772	86	1,070

Five year average is from years 2005 through 2009.

Ten year average is from years 2000 through 2009.

**California Water Service Company - Selma District**  
**Water Supply and Demand Analysis and Projections**  
**Percentage Change in Annual Demand**

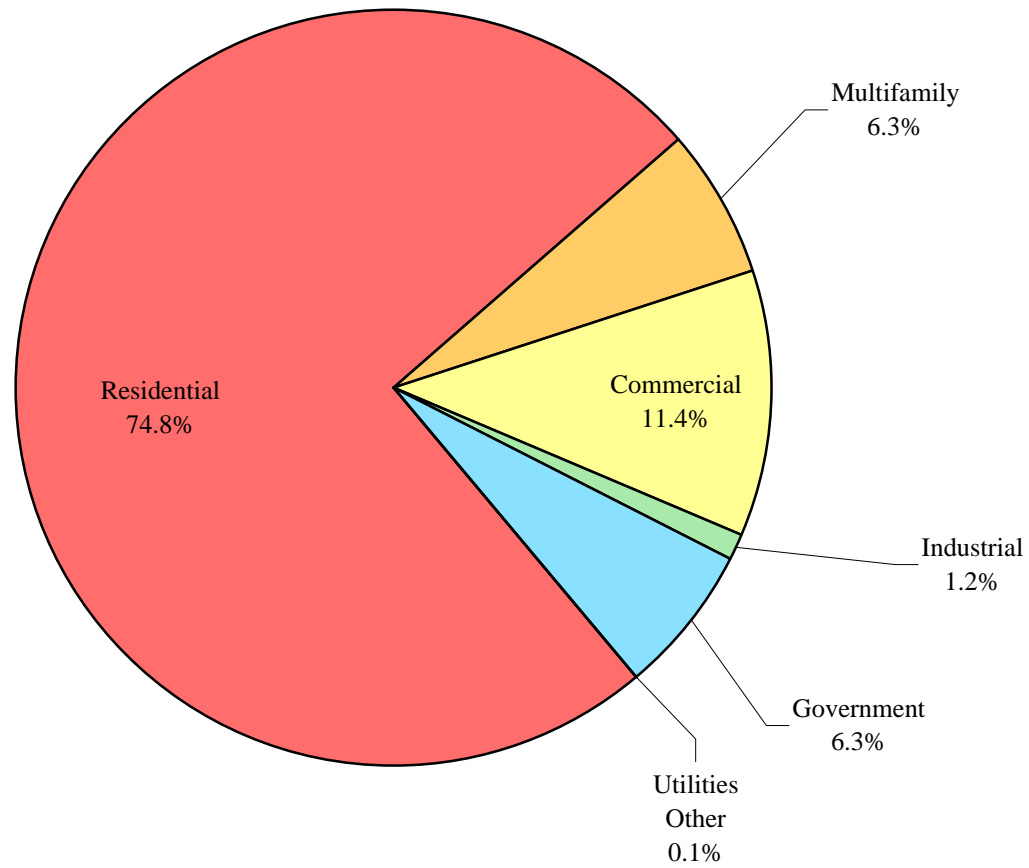
Year	Residential			Multifamily	Commercial	Industrial	Government	Other	Unaccounted Water	Total
	Total	Metered	Flat Rate							
1981	1.12%	-0.04%	1.27%	10.34%	4.21%	-15.22%	16.45%	8.36%	2.15%	2.15%
1982	-3.16%	-1.06%	-3.41%	16.74%	-10.55%	10.42%	-7.63%	134.27%	-3.65%	-3.65%
1983	9.09%	6.34%	9.43%	9.71%	3.45%	26.77%	0.00%	63.99%	8.34%	8.34%
1984	17.34%	10.12%	18.21%	11.16%	15.43%	-24.68%	21.78%	-52.59%	16.20%	16.20%
1985	-2.54%	-2.83%	-2.51%	-1.22%	-1.13%	-10.53%	5.02%	28.94%	-2.03%	-2.03%
1986	2.92%	18.73%	1.15%	44.93%	8.93%	-0.11%	-5.55%	3.59%	4.30%	4.30%
1987	4.39%	-0.84%	5.07%	22.47%	4.47%	-3.17%	10.27%	-31.32%	5.17%	5.17%
1988	-0.51%	6.82%	-1.41%	2.52%	9.33%	1.63%	-0.93%	2.66%	0.86%	0.86%
1989	-1.59%	-3.80%	-1.30%	-1.22%	-2.13%	20.59%	-9.34%	50.86%	-1.74%	-1.74%
1990	-10.47%	-0.35%	-11.79%	9.62%	1.70%	18.24%	-5.57%	-18.78%	-7.46%	-7.46%
1991	-9.91%	-3.66%	-10.83%	20.20%	-8.32%	-27.16%	-13.23%	100.78%	-8.33%	-8.33%
1992	13.65%	27.22%	11.49%	17.08%	5.21%	-5.09%	0.60%	56.62%	12.05%	12.05%
1993	1.45%	25.44%	-2.90%	0.82%	8.61%	2.00%	10.77%	58.53%	3.05%	3.05%
1994	5.56%	11.14%	4.25%	4.48%	2.75%	4.12%	-2.17%	-80.90%	4.06%	4.06%
1995	0.43%	9.36%	-1.80%	10.00%	-4.43%	71.75%	15.68%	-69.68%	1.47%	1.47%
1996	-1.39%	12.32%	-5.20%	3.79%	-0.54%	49.24%	14.60%	705.93%	0.87%	0.87%
1997	9.72%	15.88%	7.69%	-4.50%	1.09%	37.63%	13.66%	-58.12%	8.04%	8.04%
1998	-4.92%	-5.54%	-4.69%	-7.93%	-9.00%	1.74%	-11.23%	44.32%	-5.69%	-5.69%
1999	13.10%	19.58%	10.82%	16.20%	17.43%	11.51%	8.60%	-3.65%	13.54%	13.54%
2000	0.17%	4.20%	-1.37%	-3.74%	2.92%	-8.70%	-8.41%	-33.98%	-0.47%	-0.47%
2001	3.03%	5.76%	1.93%	1.34%	0.12%	-24.34%	7.54%	129.98%	2.11%	2.11%
2002	7.78%	10.21%	6.76%	9.96%	-0.99%	8.46%	7.52%	9.32%	6.80%	6.80%
2003	4.41%	5.92%	3.76%	0.78%	2.89%	1.57%	2.48%	32.54%	3.92%	3.92%
2004	0.34%	11.98%	-4.77%	1.65%	5.65%	-39.16%	1.39%	419.31%	1.73%	1.73%
2005	-5.88%	1.49%	-9.67%	-0.06%	-3.86%	-11.98%	3.76%	-36.82%	-5.46%	-5.46%
2006	5.33%	9.58%	2.86%	-5.31%	0.83%	-6.67%	3.00%	-4.25%	3.68%	3.68%
2007	8.20%	8.03%	8.30%	-2.63%	3.69%	34.89%	19.07%	-40.87%	7.23%	7.23%
2008	-4.14%	0.29%	-6.87%	1.25%	-3.89%	-12.36%	0.92%	-50.65%	-3.93%	-3.93%
2009	-9.69%	-5.46%	-12.50%	0.39%	-6.11%	18.20%	5.06%	-20.32%	-7.57%	-7.57%
2010	-7.15%	-3.26%	-9.94%	-10.94%	-12.46%	-29.68%	-8.37%	-60.72%	-8.59%	-8.59%
5 Yr. Avg.	-1.24%	2.79%	-3.58%	-1.27%	-1.87%	4.42%	6.36%	-30.58%	-1.21%	-1.21%
10 Yr. Avg.	0.96%	5.20%	-1.16%	0.36%	0.13%	-4.01%	4.23%	40.43%	0.80%	0.80%

Five year average is from years 2005 through 2009.

Ten year average is from years 2000 through 2009.

# Selma District

## Distribution of Total Sales by Customer Class (2010)



**California Water Service Company - Selma District**  
**Water Supply and Demand Analysis and Projections**  
**Percentage of Total Sales**

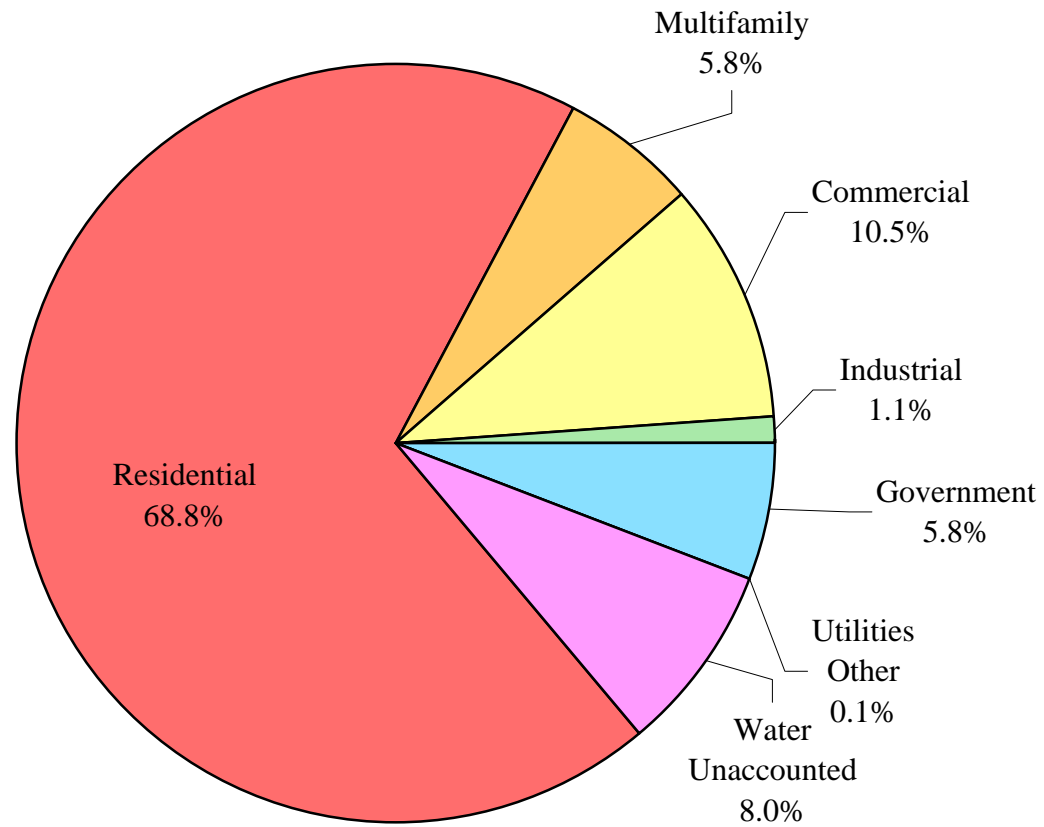
Year	Residential	Multifamily	Commercial	Industrial	Government	Other Utilities	Percent Total
1980	78.7%	2.0%	13.4%	1.5%	4.3%	0.1%	100.0%
1981	77.9%	2.2%	13.6%	1.2%	4.9%	0.1%	100.0%
1982	78.3%	2.7%	12.7%	1.4%	4.7%	0.2%	100.0%
1983	78.9%	2.7%	12.1%	1.6%	4.3%	0.4%	100.0%
1984	79.7%	2.6%	12.0%	1.1%	4.5%	0.1%	100.0%
1985	79.3%	2.6%	12.1%	1.0%	4.9%	0.2%	100.0%
1986	78.2%	3.6%	12.7%	0.9%	4.4%	0.2%	100.0%
1987	77.6%	4.2%	12.6%	0.9%	4.6%	0.1%	100.0%
1988	76.6%	4.3%	13.6%	0.9%	4.5%	0.1%	100.0%
1989	76.7%	4.3%	13.6%	1.1%	4.2%	0.2%	100.0%
1990	74.2%	5.1%	14.9%	1.4%	4.3%	0.2%	100.0%
1991	72.9%	6.7%	14.9%	1.1%	4.0%	0.4%	100.0%
1992	73.9%	7.0%	14.0%	0.9%	3.6%	0.5%	100.0%
1993	72.8%	6.8%	14.8%	0.9%	3.9%	0.8%	100.0%
1994	73.8%	6.9%	14.6%	0.9%	3.7%	0.1%	100.0%
1995	73.1%	7.4%	13.7%	1.5%	4.2%	0.0%	100.0%
1996	71.5%	7.6%	13.5%	2.3%	4.8%	0.4%	100.0%
1997	72.6%	6.8%	12.7%	2.9%	5.0%	0.1%	100.0%
1998	73.2%	6.6%	12.2%	3.1%	4.7%	0.2%	100.0%
1999	72.9%	6.7%	12.6%	3.0%	4.5%	0.2%	100.0%
2000	73.3%	6.5%	13.1%	2.8%	4.1%	0.1%	100.0%
2001	74.0%	6.5%	12.8%	2.1%	4.4%	0.3%	100.0%
2002	74.7%	6.7%	11.9%	2.1%	4.4%	0.3%	100.0%
2003	75.0%	6.5%	11.8%	2.1%	4.3%	0.3%	100.0%
2004	74.0%	6.5%	12.2%	1.2%	4.3%	1.8%	100.0%
2005	73.7%	6.8%	12.4%	1.1%	4.7%	1.2%	100.0%
2006	74.8%	6.2%	12.1%	1.0%	4.7%	1.1%	100.0%
2007	75.5%	5.7%	11.7%	1.3%	5.2%	0.6%	100.0%
2008	75.4%	6.0%	11.7%	1.2%	5.5%	0.3%	100.0%
2009	73.6%	6.5%	11.9%	1.5%	6.2%	0.3%	100.0%
2010	74.8%	6.3%	11.4%	1.2%	6.3%	0.1%	100.0%
5 Yr. Avg.	74.6%	6.2%	12.0%	1.2%	5.3%	0.7%	100.0%
10 Yr. Avg.	74.4%	6.4%	12.2%	1.6%	4.8%	0.6%	100.0%

Five year average is from years 2005 through 2009.

Ten year average is from years 2000 through 2009.

# Selma District

## Distribution of Total Demand by Customer Class (2010)





**California Water Service Company - Selma District**  
**Water Supply and Demand Analysis and Projections**  
**Percentage of Total Demand**

Worksheet 9

Year	Residential	Multifamily	Commercial	Industrial	Government	Other Utilities	Unaccounted Water	Percent Total
1980	72.4%	1.9%	12.3%	1.4%	3.9%	0.1%	8.0%	100.0%
1981	71.7%	2.0%	12.6%	1.1%	4.5%	0.1%	8.0%	100.0%
1982	72.1%	2.4%	11.7%	1.3%	4.3%	0.2%	8.0%	100.0%
1983	72.6%	2.5%	11.1%	1.5%	4.0%	0.3%	8.0%	100.0%
1984	73.3%	2.4%	11.1%	1.0%	4.2%	0.1%	8.0%	100.0%
1985	72.9%	2.4%	11.2%	0.9%	4.5%	0.2%	8.0%	100.0%
1986	71.9%	3.3%	11.7%	0.9%	4.1%	0.2%	8.0%	100.0%
1987	71.4%	3.9%	11.6%	0.8%	4.2%	0.1%	8.0%	100.0%
1988	70.4%	3.9%	12.5%	0.8%	4.2%	0.1%	8.0%	100.0%
1989	70.5%	4.0%	12.5%	1.0%	3.9%	0.2%	8.0%	100.0%
1990	68.3%	4.7%	13.7%	1.2%	3.9%	0.2%	8.0%	100.0%
1991	67.1%	6.1%	13.7%	1.0%	3.7%	0.3%	8.0%	100.0%
1992	68.0%	6.4%	12.9%	0.8%	3.3%	0.5%	8.0%	100.0%
1993	67.0%	6.3%	13.6%	0.8%	3.6%	0.7%	8.0%	100.0%
1994	67.9%	6.3%	13.4%	0.8%	3.4%	0.1%	8.0%	100.0%
1995	67.2%	6.8%	12.6%	1.4%	3.8%	0.0%	8.0%	100.0%
1996	65.7%	7.0%	12.5%	2.1%	4.4%	0.3%	8.0%	100.0%
1997	66.8%	6.2%	11.7%	2.6%	4.6%	0.1%	8.0%	100.0%
1998	67.3%	6.1%	11.3%	2.8%	4.3%	0.2%	8.0%	100.0%
1999	67.1%	6.2%	11.6%	2.8%	4.1%	0.2%	8.0%	100.0%
2000	67.5%	6.0%	12.0%	2.6%	3.8%	0.1%	8.0%	100.0%
2001	68.1%	6.0%	11.8%	1.9%	4.0%	0.2%	8.0%	100.0%
2002	68.7%	6.1%	10.9%	1.9%	4.0%	0.2%	8.0%	100.0%
2003	69.0%	5.9%	10.8%	1.9%	4.0%	0.3%	8.0%	100.0%
2004	68.1%	5.9%	11.2%	1.1%	4.0%	1.6%	8.0%	100.0%
2005	67.8%	6.3%	11.4%	1.1%	4.4%	1.1%	8.0%	100.0%
2006	68.9%	5.7%	11.1%	0.9%	4.3%	1.0%	8.0%	100.0%
2007	69.5%	5.2%	10.8%	1.2%	4.8%	0.6%	8.0%	100.0%
2008	69.3%	5.5%	10.8%	1.1%	5.1%	0.3%	8.0%	100.0%
2009	67.7%	6.0%	10.9%	1.4%	5.7%	0.2%	8.0%	100.0%
2010	68.8%	5.8%	10.5%	1.1%	5.8%	0.1%	8.0%	100.0%
5 Yr. Avg.	68.6%	5.7%	11.0%	1.1%	4.9%	0.6%	8.0%	100.0%
10 Yr. Avg.	68.5%	5.9%	11.2%	1.5%	4.4%	0.6%	8.0%	100.0%

Five year average is from years 2005 through 2009.

Ten year average is from years 2000 through 2009.

## California Water Service Company - Selma District

### Water Supply and Demand Analysis and Projections

Worksheet 10

Scenario #1: Based on Maintaining Growth at the  10-Year Average Growth Rate  Low Demand per Service for each Customer Class.  
 5-Year  Average  High

Summary of Historical Growth Rate from Worksheet 2			
Customer Type	10 Yr. Avg. Historical Growth Rate	Individual Growth Rate Selected	Notes
Single Family Residential	1.905%	1.905%	Historic growth rate used
Multi Family Residential	2.845%	2.845%	Historic growth rate used
Commercial	-0.044%	1.781%	Overall growth rate used
Industrial	0.753%	1.781%	Overall growth rate used
Government	4.086%	1.781%	Overall growth rate used
Other	10.531%	1.781%	Overall growth rate used
Overall	1.781%	1.902%	

Summary of Lowest Demand per Service from Worksheets 5 and 6									
Demand/Serv. Units	Multi-Residential			Commercial	Industrial	Government	Total Other	Unaccounted Total Serv.	Combined Demand/Serv.
	Residential	(service)	(unit)						
Gal/Service/Yr	262,583	1,674,728	81,625	491,690	1,154,307	932,313	257,049	27,518	343,979
AF/Service/Yr	0.806	5.140	0.250	1.509	3.542	2.861	0.789	0.084	1.056
Gal/Service/Day	719	4,588	224	1,347	3,162	2,554	704	75	942

## California Water Service Company - Selma District

### Water Supply and Demand Analysis and Projections

Worksheet 10

Scenario #1: Based on Maintaining Growth at the  10-Year  5-Year Average Growth Rate  Low  Average  High Demand per Service for each Customer Class.

Customer Type	Projected Services 2010	Projected Services 2015	Projected Services 2020	Projected Services 2025	Projected Services 2030	Projected Services 2035	Projected Services 2040	Services projected to be added from 2010 - 2040
Single Family Residential	5,446	5,985	6,577	7,228	7,943	8,729	9,592	4,147
Multi Family Residential	52	60	69	80	92	106	122	69
Commercial	450	491	537	586	640	699	764	314
Industrial	18	20	22	24	26	28	31	13
Government	124	136	148	162	177	193	211	87
Other	7	8	9	9	10	11	12	5
<b>Total</b>	<b>6,098</b>	<b>6,700</b>	<b>7,362</b>	<b>8,089</b>	<b>8,888</b>	<b>9,767</b>	<b>10,732</b>	<b>4,634</b>

Customer Type	Projected Demand 2010 (ccf)	Projected Demand 2015 (ccf)	Projected Demand 2020 (ccf)	Projected Demand 2025 (ccf)	Projected Demand 2030 (ccf)	Projected Demand 2035 (ccf)	Projected Demand 2040 (ccf)	Projected demand to be added from 2010 - 2040 (ccf)
Single Family Residential	1,911,588	2,100,737	2,308,602	2,537,036	2,788,073	3,063,949	3,367,123	1,455,536
Multi Family Residential	117,426	135,108	155,452	178,859	205,792	236,779	272,433	155,007
Commercial	295,697	322,983	352,788	385,343	420,902	459,742	502,167	206,470
Industrial	28,270	30,879	33,728	36,841	40,240	43,954	48,010	19,740
Government	154,759	169,040	184,638	201,677	220,287	240,615	262,819	108,060
Other	2,448	2,674	2,921	3,190	3,485	3,806	4,158	1,709
Unaccounted	224,315	246,463	270,804	297,556	326,959	359,277	394,799	170,484
<b>Total</b>	<b>2,734,502</b>	<b>3,007,883</b>	<b>3,308,934</b>	<b>3,640,502</b>	<b>4,005,737</b>	<b>4,408,122</b>	<b>4,851,507</b>	<b>2,117,006</b>

Customer Type	Projected Demand 2010 (AF)	Projected Demand 2015 (AF)	Projected Demand 2020 (AF)	Projected Demand 2025 (AF)	Projected Demand 2030 (AF)	Projected Demand 2035 (AF)	Projected Demand 2040 (AF)	Projected demand to be added from 2010 - 2040 (AF)
Single Family Residential	4,388	4,823	5,300	5,824	6,401	7,034	7,730	3,341
Multi Family Residential	270	310	357	411	472	544	625	356
Commercial	679	741	810	885	966	1,055	1,153	474
Industrial	65	71	77	85	92	101	110	45
Government	355	388	424	463	506	552	603	248
Other	6	6	7	7	8	9	10	4
Unaccounted	515	566	622	683	751	825	906	391
<b>Total</b>	<b>6,278</b>	<b>6,905</b>	<b>7,596</b>	<b>8,358</b>	<b>9,196</b>	<b>10,120</b>	<b>11,138</b>	<b>4,860</b>

## California Water Service Company - Selma District

### Water Supply and Demand Analysis and Projections

Worksheet 10

Scenario #1: Based on Maintaining Growth at the

- 10-Year  
 5-Year

Average Growth Rate

- Low  
 Average  
 High

**2000's Projections**

Demand per Service for each Customer Class.

Customer Type	Actual Services 2001	Actual Services 2002	Actual Services 2003	Actual Services 2004	Actual Services 2005	Actual Services 2006	Actual Services 2007	Actual Services 2008	Actual Services 2009	Projected Services 2010
Residential	4,553	4,681	4,820	5,018	5,160	5,306	5,355	5,355	5,344	5,446
Multi-Residential	41	41	41	41	41	41	41	48	51	52
Commercial	468	466	464	464	469	470	429	454	442	450
Industrial	19	19	19	17	17	17	17	16	18	18
Government	88	91	93	94	97	104	105	115	122	124
Other	3	5	8	12	10	12	12	11	7	7
<b>Total</b>	<b>5,172</b>	<b>5,303</b>	<b>5,445</b>	<b>5,646</b>	<b>5,794</b>	<b>5,950</b>	<b>5,959</b>	<b>5,999</b>	<b>5,984</b>	<b>6,098</b>

Customer Type	Demand 2001(ccf)	Demand 2002(ccf)	Demand 2003(ccf)	Demand 2004(ccf)	Demand 2005(ccf)	Demand 2006(ccf)	Demand 2007(ccf)	Demand 2008(ccf)	Demand 2009(ccf)	Demand 2010(ccf)
Residential	1,598,196	1,643,126	1,691,918	1,761,420	1,811,265	1,862,514	1,879,714	1,879,714	1,875,853	1,911,588
Multi-Residential	91,790	91,790	91,790	91,790	91,790	91,790	91,790	107,461	114,178	117,426
Commercial	307,612	306,297	304,983	304,983	308,269	308,927	281,978	298,410	290,522	295,697
Industrial	29,318	29,318	29,318	26,232	26,232	26,232	26,232	24,689	27,775	28,270
Government	109,676	113,415	115,907	117,154	120,893	129,617	130,863	143,326	152,051	154,759
Other	1,031	1,718	2,749	4,123	3,436	4,123	4,123	3,780	2,405	2,448
Unaccounted	190,260	195,079	200,303	207,697	213,141	218,880	219,211	220,682	220,130	224,315
<b>Total</b>	<b>2,327,882</b>	<b>2,380,744</b>	<b>2,436,968</b>	<b>2,513,399</b>	<b>2,575,026</b>	<b>2,642,083</b>	<b>2,633,911</b>	<b>2,678,063</b>	<b>2,682,915</b>	<b>2,734,502</b>

Customer Type	Demand 2001(AF)	Demand 2002(AF)	Demand 2003(AF)	Demand 2004(AF)	Demand 2005(AF)	Demand 2006(AF)	Demand 2007(AF)	Demand 2008(AF)	Demand 2009(AF)	Demand 2010(AF)
Residential	3,669	3,772	3,884	4,044	4,158	4,276	4,315	4,315	4,306	4,388
Multi-Residential	211	211	211	211	211	211	211	247	262	270
Commercial	706	703	700	700	708	709	647	685	667	679
Industrial	67	67	67	60	60	60	60	57	64	65
Government	252	260	266	269	278	298	300	329	349	355
Other	2	4	6	9	8	9	9	9	6	6
Unaccounted	437	448	460	477	489	502	503	507	505	515
<b>Total</b>	<b>5,344</b>	<b>5,465</b>	<b>5,595</b>	<b>5,770</b>	<b>5,911</b>	<b>6,065</b>	<b>6,047</b>	<b>6,148</b>	<b>6,159</b>	<b>6,278</b>

## California Water Service Company - Selma District

### Water Supply and Demand Analysis and Projections

Worksheet 10

Scenario #1: Based on Maintaining Growth at the

 10-Year  
 5-Year

Average Growth Rate

 Low  
 Average  
 High

## 2010's Projections

Demand per Service for each Customer Class.

Customer Type	Projected Services 2011	Projected Services 2012	Projected Services 2013	Projected Services 2014	Projected Services 2015	Projected Services 2016	Projected Services 2017	Projected Services 2018	Projected Services 2019	Projected Services 2020
Residential	5,550	5,655	5,763	5,873	5,985	6,099	6,215	6,333	6,454	6,577
Multi-Residential	54	55	57	59	60	62	64	66	68	69
Commercial	458	466	474	483	491	500	509	518	527	537
Industrial	19	19	19	20	20	20	21	21	21	22
Government	126	129	131	133	136	138	141	143	146	148
Other	7	7	8	8	8	8	8	8	8	9
<b>Total</b>	<b>6,214</b>	<b>6,332</b>	<b>6,452</b>	<b>6,575</b>	<b>6,700</b>	<b>6,827</b>	<b>6,957</b>	<b>7,089</b>	<b>7,224</b>	<b>7,362</b>

Customer Type	Demand 2011(ccf)	Demand 2012(ccf)	Demand 2013(ccf)	Demand 2014(ccf)	Demand 2015(ccf)	Demand 2016(ccf)	Demand 2017(ccf)	Demand 2018(ccf)	Demand 2019(ccf)	Demand 2020(ccf)
Residential	1,948,003	1,985,113	2,022,929	2,061,466	2,100,737	2,140,756	2,181,537	2,223,096	2,265,446	2,308,602
Multi-Residential	120,767	124,203	127,736	131,370	135,108	138,951	142,905	146,970	151,152	155,452
Commercial	300,963	306,323	311,779	317,332	322,983	328,736	334,590	340,549	346,615	352,788
Industrial	28,774	29,286	29,808	30,338	30,879	31,429	31,988	32,558	33,138	33,728
Government	157,515	160,320	163,176	166,082	169,040	172,050	175,114	178,233	181,408	184,638
Other	2,492	2,536	2,581	2,627	2,674	2,722	2,770	2,820	2,870	2,921
Unaccounted	228,579	232,924	237,352	241,864	246,463	251,149	255,924	260,791	265,750	270,804
<b>Total</b>	<b>2,787,092</b>	<b>2,840,705</b>	<b>2,895,361</b>	<b>2,951,080</b>	<b>3,007,883</b>	<b>3,065,793</b>	<b>3,124,830</b>	<b>3,185,017</b>	<b>3,246,377</b>	<b>3,308,934</b>

Customer Type	Demand 2011(AF)	Demand 2012(AF)	Demand 2013(AF)	Demand 2014(AF)	Demand 2015(AF)	Demand 2016(AF)	Demand 2017(AF)	Demand 2018(AF)	Demand 2019(AF)	Demand 2020(AF)
Residential	4,472	4,557	4,644	4,733	4,823	4,915	5,008	5,104	5,201	5,300
Multi-Residential	277	285	293	302	310	319	328	337	347	357
Commercial	691	703	716	728	741	755	768	782	796	810
Industrial	66	67	68	70	71	72	73	75	76	77
Government	362	368	375	381	388	395	402	409	416	424
Other	6	6	6	6	6	6	6	6	7	7
Unaccounted	525	535	545	555	566	577	588	599	610	622
<b>Total</b>	<b>6,398</b>	<b>6,521</b>	<b>6,647</b>	<b>6,775</b>	<b>6,905</b>	<b>7,038</b>	<b>7,174</b>	<b>7,312</b>	<b>7,453</b>	<b>7,596</b>

## California Water Service Company - Selma District

### Water Supply and Demand Analysis and Projections

Worksheet 10

Scenario #1: Based on Maintaining Growth at the  10-Year Average Growth Rate  Low Demand per Service for each Customer Class.  
 5-Year  Average  High

Customer Type	Projected Services 2021	Projected Services 2022	Projected Services 2023	Projected Services 2024	Projected Services 2025	Projected Services 2026	Projected Services 2027	Projected Services 2028	Projected Services 2029	Projected Services 2030
Residential	6,702	6,830	6,960	7,092	7,228	7,365	7,506	7,649	7,794	7,943
Multi-Residential	71	73	76	78	80	82	85	87	89	92
Commercial	546	556	566	576	586	597	607	618	629	640
Industrial	22	23	23	23	24	24	25	25	26	26
Government	151	153	156	159	162	165	168	171	174	177
Other	9	9	9	9	9	9	10	10	10	10
<b>Total</b>	<b>7,502</b>	<b>7,644</b>	<b>7,790</b>	<b>7,938</b>	<b>8,089</b>	<b>8,243</b>	<b>8,399</b>	<b>8,559</b>	<b>8,722</b>	<b>8,888</b>

Customer Type	Demand 2021(ccf)	Demand 2022(ccf)	Demand 2023(ccf)	Demand 2024(ccf)	Demand 2025(ccf)	Demand 2026(ccf)	Demand 2027(ccf)	Demand 2028(ccf)	Demand 2029(ccf)	Demand 2030(ccf)
Residential	2,352,581	2,397,398	2,443,068	2,489,609	2,537,036	2,585,366	2,634,618	2,684,807	2,735,953	2,788,073
Multi-Residential	159,874	164,423	169,101	173,912	178,859	183,948	189,181	194,564	200,099	205,792
Commercial	359,071	365,466	371,975	378,600	385,343	392,206	399,191	406,300	413,537	420,902
Industrial	34,329	34,940	35,563	36,196	36,841	37,497	38,165	38,844	39,536	40,240
Government	187,927	191,274	194,680	198,148	201,677	205,268	208,924	212,645	216,432	220,287
Other	2,973	3,026	3,080	3,135	3,190	3,247	3,305	3,364	3,424	3,485
Unaccounted	275,954	281,203	286,551	292,002	297,556	303,217	308,985	314,864	320,854	326,959
<b>Total</b>	<b>3,372,710</b>	<b>3,437,730</b>	<b>3,504,018</b>	<b>3,571,600</b>	<b>3,640,502</b>	<b>3,710,749</b>	<b>3,782,369</b>	<b>3,855,388</b>	<b>3,929,835</b>	<b>4,005,737</b>

Customer Type	Demand 2021(AF)	Demand 2022(AF)	Demand 2023(AF)	Demand 2024(AF)	Demand 2025(AF)	Demand 2026(AF)	Demand 2027(AF)	Demand 2028(AF)	Demand 2029(AF)	Demand 2030(AF)
Residential	5,401	5,504	5,609	5,715	5,824	5,935	6,048	6,164	6,281	6,401
Multi-Residential	367	377	388	399	411	422	434	447	459	472
Commercial	824	839	854	869	885	900	916	933	949	966
Industrial	79	80	82	83	85	86	88	89	91	92
Government	431	439	447	455	463	471	480	488	497	506
Other	7	7	7	7	7	7	8	8	8	8
Unaccounted	634	646	658	670	683	696	709	723	737	751
<b>Total</b>	<b>7,743</b>	<b>7,892</b>	<b>8,044</b>	<b>8,199</b>	<b>8,358</b>	<b>8,519</b>	<b>8,683</b>	<b>8,851</b>	<b>9,022</b>	<b>9,196</b>

## California Water Service Company - Selma District

### Water Supply and Demand Analysis and Projections

Worksheet 10

Scenario #1: Based on Maintaining Growth at the

 10-Year  
 5-Year

Average Growth Rate

 Low Average High**2030's Projections**

Demand per Service for each Customer Class.

Customer Type	Projected Services 2031	Projected Services 2032	Projected Services 2033	Projected Services 2034	Projected Services 2035	Projected Services 2036	Projected Services 2037	Projected Services 2038	Projected Services 2039	Projected Services 2040
Residential	8,094	8,248	8,405	8,566	8,729	8,895	9,064	9,237	9,413	9,592
Multi-Residential	95	97	100	103	106	109	112	115	118	122
Commercial	652	663	675	687	699	712	725	737	751	764
Industrial	27	27	27	28	28	29	30	30	31	31
Government	180	183	186	190	193	196	200	204	207	211
Other	10	11	11	11	11	11	11	12	12	12
<b>Total</b>	<b>9,057</b>	<b>9,229</b>	<b>9,405</b>	<b>9,584</b>	<b>9,767</b>	<b>9,952</b>	<b>10,142</b>	<b>10,335</b>	<b>10,532</b>	<b>10,732</b>

Customer Type	Demand 2031(ccf)	Demand 2032(ccf)	Demand 2033(ccf)	Demand 2034(ccf)	Demand 2035(ccf)	Demand 2036(ccf)	Demand 2037(ccf)	Demand 2038(ccf)	Demand 2039(ccf)	Demand 2040(ccf)
Residential	2,841,185	2,895,310	2,950,466	3,006,672	3,063,949	3,122,317	3,181,797	3,242,411	3,304,179	3,367,123
Multi-Residential	211,646	217,668	223,860	230,229	236,779	243,516	250,444	257,569	264,897	272,433
Commercial	428,398	436,028	443,793	451,697	459,742	467,930	476,264	484,746	493,380	502,167
Industrial	40,957	41,686	42,429	43,185	43,954	44,736	45,533	46,344	47,170	48,010
Government	224,210	228,204	232,268	236,405	240,615	244,900	249,262	253,701	258,220	262,819
Other	3,547	3,610	3,674	3,740	3,806	3,874	3,943	4,013	4,085	4,158
Unaccounted	333,181	339,521	345,982	352,566	359,277	366,115	373,084	380,186	387,423	394,799
<b>Total</b>	<b>4,083,125</b>	<b>4,162,026</b>	<b>4,242,472</b>	<b>4,324,494</b>	<b>4,408,122</b>	<b>4,493,389</b>	<b>4,580,327</b>	<b>4,668,970</b>	<b>4,759,352</b>	<b>4,851,507</b>

Customer Type	Demand 2031(AF)	Demand 2032(AF)	Demand 2033(AF)	Demand 2034(AF)	Demand 2035(AF)	Demand 2036(AF)	Demand 2037(AF)	Demand 2038(AF)	Demand 2039(AF)	Demand 2040(AF)
Residential	6,523	6,647	6,773	6,902	7,034	7,168	7,304	7,444	7,585	7,730
Multi-Residential	486	500	514	529	544	559	575	591	608	625
Commercial	983	1,001	1,019	1,037	1,055	1,074	1,093	1,113	1,133	1,153
Industrial	94	96	97	99	101	103	105	106	108	110
Government	515	524	533	543	552	562	572	582	593	603
Other	8	8	8	9	9	9	9	9	9	10
Unaccounted	765	779	794	809	825	840	856	873	889	906
<b>Total</b>	<b>9,374</b>	<b>9,555</b>	<b>9,739</b>	<b>9,928</b>	<b>10,120</b>	<b>10,315</b>	<b>10,515</b>	<b>10,719</b>	<b>10,926</b>	<b>11,138</b>

**California Water Service Company - Selma District**  
**Water Supply and Demand Analysis and Projections**

Scenario #2: Based on Maintaining Growth at the  10-Year  5-Year Average Growth Rate  Low  Average  High Demand per Service for each Customer Class.

Summary of Historical Growth Rate from Worksheet 2			
Customer Type	10 Yr. Avg. Historical Growth Rate	Individual Growth Rate Selected	Notes
Single Family Residential	1.905%	1.905%	Historic growth rate used
Multi Family Residential	2.845%	2.845%	Historic growth rate used
Commercial	-0.044%	1.781%	Overall growth rate used
Industrial	0.753%	1.781%	Overall growth rate used
Government	4.086%	1.781%	Overall growth rate used
Other	10.531%	1.781%	Overall growth rate used
Overall	1.781%	1.902%	

Summary of Average Demand per Service from Worksheets 5 and 6									
Demand/Serv. Units	Multi-Residential						Total Other	Unaccounted Total Serv.	Combined Demand/Serv.
	Residential	(service)	(unit)	Commercial	Industrial	Government			
Gal/Service/Yr	323,520	2,208,948	122,150	421,410	1,548,870	1,401,613	4,394,057	31,281	391,012
AF/Service/Yr	0.993	6.779	0.375	1.293	4.753	4.301	13.485	0.096	1.200
Gal/Service/Day	886	6,052	335	1,155	4,243	3,840	12,039	86	1,071



## California Water Service Company - Selma District

### Water Supply and Demand Analysis and Projections

Worksheet 11

#### 30-year projection Summary

Scenario #2: Based on Maintaining Growth at the  10-Year  5-Year Average Growth Rate  Average  High Demand per Service for each Customer Class.

Customer Type	Projected Services 2010	Projected Services 2015	Projected Services 2020	Projected Services 2025	Projected Services 2030	Projected Services 2035	Projected Services 2040	Services projected to be added from 2010 - 2040
Single Family Residential	5,446	5,985	6,577	7,228	7,943	8,729	9,592	4,147
Multi Family Residential	52	60	69	80	92	106	122	69
Commercial	450	491	537	586	640	699	764	314
Industrial	18	20	22	24	26	28	31	13
Government	124	136	148	162	177	193	211	87
Other	7	8	9	9	10	11	12	5
<b>Total</b>	<b>6,098</b>	<b>6,700</b>	<b>7,362</b>	<b>8,089</b>	<b>8,888</b>	<b>9,767</b>	<b>10,732</b>	<b>4,634</b>

Customer Type	Projected Demand 2010 (ccf)	Projected Demand 2015 (ccf)	Projected Demand 2020 (ccf)	Projected Demand 2025 (ccf)	Projected Demand 2030 (ccf)	Projected Demand 2035 (ccf)	Projected Demand 2040 (ccf)	Projected demand to be added from 2010 - 2040 (ccf)
Single Family Residential	2,355,211	2,588,256	2,844,361	3,125,807	3,435,102	3,775,001	4,148,533	1,793,322
Multi Family Residential	154,884	178,206	205,039	235,914	271,437	312,309	359,336	204,452
Commercial	253,431	276,817	302,362	330,264	360,740	394,029	430,389	176,958
Industrial	37,933	41,434	45,257	49,434	53,995	58,978	64,420	26,487
Government	232,660	254,129	277,580	303,195	331,173	361,734	395,114	162,454
Other	41,850	45,712	49,930	54,538	59,570	65,068	71,072	29,222
Unaccounted	254,985	280,162	307,831	338,241	371,664	408,401	448,780	193,794
<b>Total</b>	<b>3,330,954</b>	<b>3,664,716</b>	<b>4,032,361</b>	<b>4,437,391</b>	<b>4,883,682</b>	<b>5,375,519</b>	<b>5,917,644</b>	<b>2,586,690</b>

Customer Type	Projected Demand 2010 (AF)	Projected Demand 2015 (AF)	Projected Demand 2020 (AF)	Projected Demand 2025 (AF)	Projected Demand 2030 (AF)	Projected Demand 2035 (AF)	Projected Demand 2040 (AF)	Projected demand to be added from 2010 - 2040 (AF)
Single Family Residential	5,407	5,942	6,530	7,176	7,886	8,666	9,524	4,117
Multi Family Residential	356	409	471	542	623	717	825	469
Commercial	582	635	694	758	828	905	988	406
Industrial	87	95	104	113	124	135	148	61
Government	534	583	637	696	760	830	907	373
Other	96	105	115	125	137	149	163	67
Unaccounted	585	643	707	777	853	938	1,030	445
<b>Total</b>	<b>7,647</b>	<b>8,413</b>	<b>9,257</b>	<b>10,187</b>	<b>11,211</b>	<b>12,341</b>	<b>13,585</b>	<b>5,938</b>

**California Water Service Company - Selma District**  
**Water Supply and Demand Analysis and Projections**

**2000's Projections**

Scenario #2: Based on Maintaining Growth at the  10-Year Average Growth Rate  Average Demand per Service for each Customer Class.  
 5-Year  Low  High

Customer Type	Actual Services 2001	Actual Services 2002	Actual Services 2003	Actual Services 2004	Actual Services 2005	Actual Services 2006	Actual Services 2007	Actual Services 2008	Actual Services 2009	Projected Services 2010
Residential	4,553	4,681	4,820	5,018	5,160	5,306	5,355	5,355	5,344	5,446
Multi-Residential	41	41	41	41	41	41	41	48	51	52
Commercial	468	466	464	464	469	470	429	454	442	450
Industrial	19	19	19	17	17	17	17	16	18	18
Government	88	91	93	94	97	104	105	115	122	124
Other	3	5	8	12	10	12	12	11	7	7
<b>Total</b>	<b>5,172</b>	<b>5,303</b>	<b>5,445</b>	<b>5,646</b>	<b>5,794</b>	<b>5,950</b>	<b>5,959</b>	<b>5,999</b>	<b>5,984</b>	<b>6,098</b>

Customer Type	Demand 2001(ccf)	Demand 2002(ccf)	Demand 2003(ccf)	Demand 2004(ccf)	Demand 2005(ccf)	Demand 2006(ccf)	Demand 2007(ccf)	Demand 2008(ccf)	Demand 2009(ccf)	Demand 2010(ccf)
Residential	1,969,089	2,024,447	2,084,562	2,170,193	2,231,606	2,294,748	2,315,940	2,315,940	2,311,182	2,355,211
Multi-Residential	121,070	121,070	121,070	121,070	121,070	121,070	121,070	141,740	150,599	154,884
Commercial	263,643	262,517	261,390	261,390	264,207	264,770	241,673	255,757	248,996	253,431
Industrial	39,340	39,340	39,340	35,199	35,199	35,199	35,199	33,128	37,270	37,933
Government	164,884	170,505	174,252	176,126	181,747	194,862	196,736	215,473	228,589	232,660
Other	17,622	29,370	46,992	70,488	58,740	70,488	70,488	64,614	41,118	41,850
Unaccounted	216,274	221,752	227,690	236,095	242,284	248,807	249,184	250,856	250,229	254,985
<b>Total</b>	<b>2,791,922</b>	<b>2,869,000</b>	<b>2,955,296</b>	<b>3,070,561</b>	<b>3,134,852</b>	<b>3,229,944</b>	<b>3,230,289</b>	<b>3,277,508</b>	<b>3,267,983</b>	<b>3,330,954</b>

Customer Type	Demand 2001(AF)	Demand 2002(AF)	Demand 2003(AF)	Demand 2004(AF)	Demand 2005(AF)	Demand 2006(AF)	Demand 2007(AF)	Demand 2008(AF)	Demand 2009(AF)	Demand 2010(AF)
Residential	4,520	4,648	4,786	4,982	5,123	5,268	5,317	5,317	5,306	5,407
Multi-Residential	278	278	278	278	278	278	278	325	346	356
Commercial	605	603	600	600	607	608	555	587	572	582
Industrial	90	90	90	81	81	81	81	76	86	87
Government	379	391	400	404	417	447	452	495	525	534
Other	40	67	108	162	135	162	162	148	94	96
Unaccounted	497	509	523	542	556	571	572	576	574	585
<b>Total</b>	<b>6,409</b>	<b>6,586</b>	<b>6,784</b>	<b>7,049</b>	<b>7,197</b>	<b>7,415</b>	<b>7,416</b>	<b>7,524</b>	<b>7,502</b>	<b>7,647</b>

## California Water Service Company - Selma District

### Water Supply and Demand Analysis and Projections

Worksheet 11

Scenario #2: Based on Maintaining Growth at the  10-Year  5-Year Average Growth Rate  Low  Average  High Demand per Service for each Customer Class.

Customer Type	Projected Services 2011	Projected Services 2012	Projected Services 2013	Projected Services 2014	Projected Services 2015	Projected Services 2016	Projected Services 2017	Projected Services 2018	Projected Services 2019	Projected Services 2020
Residential	5,550	5,655	5,763	5,873	5,985	6,099	6,215	6,333	6,454	6,577
Multi-Residential	54	55	57	59	60	62	64	66	68	69
Commercial	458	466	474	483	491	500	509	518	527	537
Industrial	19	19	19	20	20	20	21	21	21	22
Government	126	129	131	133	136	138	141	143	146	148
Other	7	7	8	8	8	8	8	8	8	9
<b>Total</b>	<b>6,214</b>	<b>6,332</b>	<b>6,452</b>	<b>6,575</b>	<b>6,700</b>	<b>6,827</b>	<b>6,957</b>	<b>7,089</b>	<b>7,224</b>	<b>7,362</b>

Customer Type	Demand 2011(ccf)	Demand 2012(ccf)	Demand 2013(ccf)	Demand 2014(ccf)	Demand 2015(ccf)	Demand 2016(ccf)	Demand 2017(ccf)	Demand 2018(ccf)	Demand 2019(ccf)	Demand 2020(ccf)
Residential	2,400,077	2,445,799	2,492,391	2,539,871	2,588,256	2,637,562	2,687,808	2,739,010	2,791,189	2,844,361
Multi-Residential	159,290	163,822	168,482	173,276	178,206	183,275	188,490	193,852	199,367	205,039
Commercial	257,945	262,539	267,215	271,974	276,817	281,748	286,766	291,873	297,071	302,362
Industrial	38,609	39,297	39,996	40,709	41,434	42,172	42,923	43,687	44,465	45,257
Government	236,803	241,021	245,313	249,682	254,129	258,655	263,262	267,951	272,723	277,580
Other	42,595	43,354	44,126	44,912	45,712	46,526	47,355	48,198	49,057	49,930
Unaccounted	259,832	264,772	269,805	274,935	280,162	285,489	290,917	296,449	302,086	307,831
<b>Total</b>	<b>3,395,152</b>	<b>3,460,603</b>	<b>3,527,330</b>	<b>3,595,359</b>	<b>3,664,716</b>	<b>3,735,427</b>	<b>3,807,520</b>	<b>3,881,021</b>	<b>3,955,958</b>	<b>4,032,361</b>

Customer Type	Demand 2011(AF)	Demand 2012(AF)	Demand 2013(AF)	Demand 2014(AF)	Demand 2015(AF)	Demand 2016(AF)	Demand 2017(AF)	Demand 2018(AF)	Demand 2019(AF)	Demand 2020(AF)
Residential	5,510	5,615	5,722	5,831	5,942	6,055	6,170	6,288	6,408	6,530
Multi-Residential	366	376	387	398	409	421	433	445	458	471
Commercial	592	603	613	624	635	647	658	670	682	694
Industrial	89	90	92	93	95	97	99	100	102	104
Government	544	553	563	573	583	594	604	615	626	637
Other	98	100	101	103	105	107	109	111	113	115
Unaccounted	596	608	619	631	643	655	668	681	693	707
<b>Total</b>	<b>7,794</b>	<b>7,945</b>	<b>8,098</b>	<b>8,254</b>	<b>8,413</b>	<b>8,575</b>	<b>8,741</b>	<b>8,910</b>	<b>9,082</b>	<b>9,257</b>

## California Water Service Company - Selma District

### Water Supply and Demand Analysis and Projections

Worksheet 11

Scenario #2: Based on Maintaining Growth at the

 10-Year  
 5-Year

Average Growth Rate

 Low Average High**2020's Projections**

Demand per Service for each Customer Class.

Customer Type	Projected Services 2021	Projected Services 2022	Projected Services 2023	Projected Services 2024	Projected Services 2025	Projected Services 2026	Projected Services 2027	Projected Services 2028	Projected Services 2029	Projected Services 2030
Residential	6,702	6,830	6,960	7,092	7,228	7,365	7,506	7,649	7,794	7,943
Multi-Residential	71	73	76	78	80	82	85	87	89	92
Commercial	546	556	566	576	586	597	607	618	629	640
Industrial	22	23	23	23	24	24	25	25	26	26
Government	151	153	156	159	162	165	168	171	174	177
Other	9	9	9	9	9	9	10	10	10	10
<b>Total</b>	<b>7,502</b>	<b>7,644</b>	<b>7,790</b>	<b>7,938</b>	<b>8,089</b>	<b>8,243</b>	<b>8,399</b>	<b>8,559</b>	<b>8,722</b>	<b>8,888</b>

Customer Type	Demand 2021(ccf)	Demand 2022(ccf)	Demand 2023(ccf)	Demand 2024(ccf)	Demand 2025(ccf)	Demand 2026(ccf)	Demand 2027(ccf)	Demand 2028(ccf)	Demand 2029(ccf)	Demand 2030(ccf)
Residential	2,898,546	2,953,763	3,010,032	3,067,373	3,125,807	3,185,353	3,246,034	3,307,871	3,370,886	3,435,102
Multi-Residential	210,873	216,872	223,042	229,388	235,914	242,625	249,528	256,627	263,928	271,437
Commercial	307,747	313,228	318,807	324,484	330,264	336,146	342,132	348,226	354,428	360,740
Industrial	46,063	46,884	47,719	48,569	49,434	50,314	51,210	52,122	53,050	53,995
Government	282,524	287,556	292,677	297,889	303,195	308,595	314,091	319,685	325,378	331,173
Other	50,820	51,725	52,646	53,583	54,538	55,509	56,498	57,504	58,528	59,570
Unaccounted	313,686	319,652	325,732	331,927	338,241	344,676	351,233	357,915	364,725	371,664
<b>Total</b>	<b>4,110,258</b>	<b>4,189,679</b>	<b>4,270,654</b>	<b>4,353,214</b>	<b>4,437,391</b>	<b>4,523,218</b>	<b>4,610,726</b>	<b>4,699,950</b>	<b>4,790,924</b>	<b>4,883,682</b>

Customer Type	Demand 2021(AF)	Demand 2022(AF)	Demand 2023(AF)	Demand 2024(AF)	Demand 2025(AF)	Demand 2026(AF)	Demand 2027(AF)	Demand 2028(AF)	Demand 2029(AF)	Demand 2030(AF)
Residential	6,654	6,781	6,910	7,042	7,176	7,313	7,452	7,594	7,739	7,886
Multi-Residential	484	498	512	527	542	557	573	589	606	623
Commercial	706	719	732	745	758	772	785	799	814	828
Industrial	106	108	110	111	113	116	118	120	122	124
Government	649	660	672	684	696	708	721	734	747	760
Other	117	119	121	123	125	127	130	132	134	137
Unaccounted	720	734	748	762	777	791	806	822	837	853
<b>Total</b>	<b>9,436</b>	<b>9,618</b>	<b>9,804</b>	<b>9,994</b>	<b>10,187</b>	<b>10,384</b>	<b>10,585</b>	<b>10,790</b>	<b>10,999</b>	<b>11,211</b>

**California Water Service Company - Selma District**  
**Water Supply and Demand Analysis and Projections**

Scenario #2: Based on Maintaining Growth at the  10-Year Average Growth Rate  Average Demand per Service for each Customer Class.  5-Year  Low  High

**2030's Projections**

Customer Type	Projected Services 2031	Projected Services 2032	Projected Services 2033	Projected Services 2034	Projected Services 2035	Projected Services 2036	Projected Services 2037	Projected Services 2038	Projected Services 2039	Projected Services 2040
Residential	8,094	8,248	8,405	8,566	8,729	8,895	9,064	9,237	9,413	9,592
Multi-Residential	95	97	100	103	106	109	112	115	118	122
Commercial	652	663	675	687	699	712	725	737	751	764
Industrial	27	27	27	28	28	29	30	30	31	31
Government	180	183	186	190	193	196	200	204	207	211
Other	10	11	11	11	11	11	11	12	12	12
<b>Total</b>	<b>9,057</b>	<b>9,229</b>	<b>9,405</b>	<b>9,584</b>	<b>9,767</b>	<b>9,952</b>	<b>10,142</b>	<b>10,335</b>	<b>10,532</b>	<b>10,732</b>

Customer Type	Demand 2031(ccf)	Demand 2032(ccf)	Demand 2033(ccf)	Demand 2034(ccf)	Demand 2035(ccf)	Demand 2036(ccf)	Demand 2037(ccf)	Demand 2038(ccf)	Demand 2039(ccf)	Demand 2040(ccf)
Residential	3,500,540	3,567,226	3,635,181	3,704,432	3,775,001	3,846,915	3,920,198	3,994,878	4,070,981	4,148,533
Multi-Residential	279,159	287,101	295,269	303,670	312,309	321,194	330,332	339,730	349,396	359,336
Commercial	367,165	373,704	380,360	387,134	394,029	401,046	408,189	415,459	422,858	430,389
Industrial	54,957	55,936	56,932	57,946	58,978	60,028	61,097	62,185	63,293	64,420
Government	337,072	343,075	349,185	355,404	361,734	368,176	374,733	381,407	388,200	395,114
Other	60,631	61,711	62,810	63,929	65,068	66,226	67,406	68,606	69,828	71,072
Unaccounted	378,737	385,944	393,288	400,773	408,401	416,174	424,096	432,169	440,396	448,780
<b>Total</b>	<b>4,978,261</b>	<b>5,074,696</b>	<b>5,173,026</b>	<b>5,273,287</b>	<b>5,375,519</b>	<b>5,479,760</b>	<b>5,586,052</b>	<b>5,694,435</b>	<b>5,804,952</b>	<b>5,917,644</b>

Customer Type	Demand 2031(AF)	Demand 2032(AF)	Demand 2033(AF)	Demand 2034(AF)	Demand 2035(AF)	Demand 2036(AF)	Demand 2037(AF)	Demand 2038(AF)	Demand 2039(AF)	Demand 2040(AF)
Residential	8,036	8,189	8,345	8,504	8,666	8,831	9,000	9,171	9,346	9,524
Multi-Residential	641	659	678	697	717	737	758	780	802	825
Commercial	843	858	873	889	905	921	937	954	971	988
Industrial	126	128	131	133	135	138	140	143	145	148
Government	774	788	802	816	830	845	860	876	891	907
Other	139	142	144	147	149	152	155	157	160	163
Unaccounted	869	886	903	920	938	955	974	992	1,011	1,030
<b>Total</b>	<b>11,429</b>	<b>11,650</b>	<b>11,876</b>	<b>12,106</b>	<b>12,341</b>	<b>12,580</b>	<b>12,824</b>	<b>13,073</b>	<b>13,326</b>	<b>13,585</b>

## California Water Service Company - Selma District

### Water Supply and Demand Analysis and Projections

Worksheet 12

Scenario #2: Based on Maintaining Growth at the  10-Year Average Growth Rate  Low  
 5-Year  Average Demand per Service for each Customer Class.  
 High

Summary of Historical Growth Rate from Worksheet 2			
Customer Type	10 Yr. Avg. Historical Growth Rate	Individual Growth Rate Selected	Notes
Single Family Residential	1.905%	1.905%	Historic growth rate used
Multi Family Residential	2.845%	2.845%	Historic growth rate used
Commercial	-0.044%	1.781%	Overall growth rate used
Industrial	0.753%	1.781%	Overall growth rate used
Government	4.086%	1.781%	Overall growth rate used
Other	10.531%	1.781%	Overall growth rate used
Overall	1.781%	1.902%	

Summary of Highest Demand per Service from Worksheets 5 and 6									
Demand/Serv. Units	Multi-Residential			Commercial	Industrial	Government	Total Other	Unaccounted Total Serv.	Combined Demand/Serv.
	Residential	(service)	(unit)						
Gal/Service/Yr	378,236	3,322,537	143,322	478,314	3,287,249	1,706,858	4,394,057	36,168	452,102
AF/Service/Yr	1.161	10.196	0.440	1.468	10.088	5.238	13.485	0.111	1.387
Gal/Service/Day	1,036	9,103	393	1,310	9,006	4,676	12,039	99	1,239

## California Water Service Company - Selma District

### Water Supply and Demand Analysis and Projections

Worksheet 12

Scenario #2: Based on Maintaining Growth at the

 10-Year  
 5-Year

Average Growth Rate

 Low Average High

### 30-year projection Summary

Demand per Service for each Customer Class.

Customer Type	Projected Services 2010	Projected Services 2015	Projected Services 2020	Projected Services 2025	Projected Services 2030	Projected Services 2035	Projected Services 2040	Services projected to be added from 2010 - 2040
Single Family Residential	5,446	5,985	6,577	7,228	7,943	8,729	9,592	4,147
Multi Family Residential	52	60	69	80	92	106	122	69
Commercial	450	491	537	586	640	699	764	314
Industrial	18	20	22	24	26	28	31	13
Government	124	136	148	162	177	193	211	87
Other	7	8	9	9	10	11	12	5
<b>Total</b>	<b>6,098</b>	<b>6,700</b>	<b>7,362</b>	<b>8,089</b>	<b>8,888</b>	<b>9,767</b>	<b>10,732</b>	<b>4,634</b>

Customer Type	Projected Demand 2010 (ccf)	Projected Demand 2015 (ccf)	Projected Demand 2020 (ccf)	Projected Demand 2025 (ccf)	Projected Demand 2030 (ccf)	Projected Demand 2035 (ccf)	Projected Demand 2040 (ccf)	Projected demand to be added from 2010 - 2040 (ccf)
Single Family Residential	2,753,539	3,025,998	3,325,417	3,654,463	4,016,068	4,413,453	4,850,159	2,096,620
Multi Family Residential	232,964	268,044	308,405	354,844	408,275	469,753	540,487	307,522
Commercial	287,653	314,197	343,191	374,860	409,451	447,235	488,506	200,853
Industrial	80,508	87,937	96,052	104,915	114,597	125,172	136,722	56,215
Government	283,329	309,474	338,032	369,225	403,297	440,512	481,162	197,834
Other	41,850	45,712	49,930	54,538	59,570	65,068	71,072	29,222
Unaccounted	294,823	323,933	355,925	391,087	429,732	472,207	518,895	224,072
<b>Total</b>	<b>3,974,665</b>	<b>4,375,295</b>	<b>4,816,952</b>	<b>5,303,931</b>	<b>5,840,990</b>	<b>6,433,400</b>	<b>7,087,003</b>	<b>3,112,338</b>

Customer Type	Projected Demand 2010 (AF)	Projected Demand 2015 (AF)	Projected Demand 2020 (AF)	Projected Demand 2025 (AF)	Projected Demand 2030 (AF)	Projected Demand 2035 (AF)	Projected Demand 2040 (AF)	Projected demand to be added from 2010 - 2040 (AF)
Single Family Residential	6,321	6,947	7,634	8,390	9,220	10,132	11,135	4,813
Multi Family Residential	535	615	708	815	937	1,078	1,241	706
Commercial	660	721	788	861	940	1,027	1,121	461
Industrial	185	202	221	241	263	287	314	129
Government	650	710	776	848	926	1,011	1,105	454
Other	96	105	115	125	137	149	163	67
Unaccounted	677	744	817	898	987	1,084	1,191	514
<b>Total</b>	<b>9,125</b>	<b>10,044</b>	<b>11,058</b>	<b>12,176</b>	<b>13,409</b>	<b>14,769</b>	<b>16,270</b>	<b>7,145</b>

## California Water Service Company - Selma District

### Water Supply and Demand Analysis and Projections

Worksheet 12

Scenario #2: Based on Maintaining Growth at the

- 10-Year  
 5-Year

Average Growth Rate

- Low  
 Average  
 High

**2000's Projections**

Demand per Service for each Customer Class.

Customer Type	Actual Services 2001	Actual Services 2002	Actual Services 2003	Actual Services 2004	Actual Services 2005	Actual Services 2006	Actual Services 2007	Actual Services 2008	Actual Services 2009	Projected Services 2010
Residential	4,553	4,681	4,820	5,018	5,160	5,306	5,355	5,355	5,344	5,446
Multi-Residential	41	41	41	41	41	41	41	48	51	52
Commercial	468	466	464	464	469	470	429	454	442	450
Industrial	19	19	19	17	17	17	17	16	18	18
Government	88	91	93	94	97	104	105	115	122	124
Other	3	5	8	12	10	12	12	11	7	7
<b>Total</b>	<b>5,172</b>	<b>5,303</b>	<b>5,445</b>	<b>5,646</b>	<b>5,794</b>	<b>5,950</b>	<b>5,959</b>	<b>5,999</b>	<b>5,984</b>	<b>6,098</b>

Customer Type	Demand 2001(ccf)	Demand 2002(ccf)	Demand 2003(ccf)	Demand 2004(ccf)	Demand 2005(ccf)	Demand 2006(ccf)	Demand 2007(ccf)	Demand 2008(ccf)	Demand 2009(ccf)	Demand 2010(ccf)
Residential	2,302,114	2,366,834	2,437,116	2,537,230	2,609,029	2,682,851	2,707,626	2,707,626	2,702,064	2,753,539
Multi-Residential	182,104	182,104	182,104	182,104	182,104	182,104	182,104	213,195	226,520	232,964
Commercial	299,244	297,965	296,686	296,686	299,883	300,523	274,307	290,292	282,619	287,653
Industrial	83,493	83,493	83,493	74,705	74,705	74,705	74,705	70,310	79,099	80,508
Government	200,792	207,637	212,201	214,482	221,328	237,300	239,581	262,399	278,371	283,329
Other	17,622	29,370	46,992	70,488	58,740	70,488	70,488	64,614	41,118	41,850
Unaccounted	250,064	256,398	263,263	272,982	280,137	287,680	288,115	290,049	289,324	294,823
<b>Total</b>	<b>3,335,434</b>	<b>3,423,802</b>	<b>3,521,856</b>	<b>3,648,677</b>	<b>3,725,926</b>	<b>3,835,649</b>	<b>3,836,926</b>	<b>3,898,485</b>	<b>3,899,115</b>	<b>3,974,665</b>

Customer Type	Demand 2001(AF)	Demand 2002(AF)	Demand 2003(AF)	Demand 2004(AF)	Demand 2005(AF)	Demand 2006(AF)	Demand 2007(AF)	Demand 2008(AF)	Demand 2009(AF)	Demand 2010(AF)
Residential	5,285	5,434	5,595	5,825	5,990	6,159	6,216	6,216	6,203	6,321
Multi-Residential	418	418	418	418	418	418	418	489	520	535
Commercial	687	684	681	681	688	690	630	666	649	660
Industrial	192	192	192	171	171	171	171	161	182	185
Government	461	477	487	492	508	545	550	602	639	650
Other	40	67	108	162	135	162	162	148	94	96
Unaccounted	574	589	604	627	643	660	661	666	664	677
<b>Total</b>	<b>7,657</b>	<b>7,860</b>	<b>8,085</b>	<b>8,376</b>	<b>8,554</b>	<b>8,806</b>	<b>8,808</b>	<b>8,950</b>	<b>8,951</b>	<b>9,125</b>



**California Water Service Company - Selma District**  
**Water Supply and Demand Analysis and Projections**

Scenario #2: Based on Maintaining Growth at the

- 10-Year
- 5-Year

Average Growth Rate

- Low
- Average
- High

**2010's Projections**

Demand per Service for each Customer Class.

Customer Type	Projected Services 2011	Projected Services 2012	Projected Services 2013	Projected Services 2014	Projected Services 2015	Projected Services 2016	Projected Services 2017	Projected Services 2018	Projected Services 2019	Projected Services 2020
Residential	5,550	5,655	5,763	5,873	5,985	6,099	6,215	6,333	6,454	6,577
Multi-Residential	54	55	57	59	60	62	64	66	68	69
Commercial	458	466	474	483	491	500	509	518	527	537
Industrial	19	19	19	20	20	20	21	21	21	22
Government	126	129	131	133	136	138	141	143	146	148
Other	7	7	8	8	8	8	8	8	8	9
<b>Total</b>	<b>6,214</b>	<b>6,332</b>	<b>6,452</b>	<b>6,575</b>	<b>6,700</b>	<b>6,827</b>	<b>6,957</b>	<b>7,089</b>	<b>7,224</b>	<b>7,362</b>

Customer Type	Demand 2011(ccf)	Demand 2012(ccf)	Demand 2013(ccf)	Demand 2014(ccf)	Demand 2015(ccf)	Demand 2016(ccf)	Demand 2017(ccf)	Demand 2018(ccf)	Demand 2019(ccf)	Demand 2020(ccf)
Residential	2,805,994	2,859,448	2,913,920	2,969,430	3,025,998	3,083,643	3,142,387	3,202,249	3,263,252	3,325,417
Multi-Residential	239,592	246,409	253,419	260,629	268,044	275,669	283,512	291,578	299,874	308,405
Commercial	292,776	297,990	303,297	308,699	314,197	319,793	325,488	331,285	337,185	343,191
Industrial	81,942	83,401	84,886	86,398	87,937	89,503	91,097	92,720	94,371	96,052
Government	288,375	293,511	298,738	304,059	309,474	314,986	320,595	326,305	332,117	338,032
Other	42,595	43,354	44,126	44,912	45,712	46,526	47,355	48,198	49,057	49,930
Unaccounted	300,427	306,139	311,958	317,889	323,933	330,092	336,369	342,765	349,283	355,925
<b>Total</b>	<b>4,051,701</b>	<b>4,130,251</b>	<b>4,210,346</b>	<b>4,292,016</b>	<b>4,375,295</b>	<b>4,460,213</b>	<b>4,546,803</b>	<b>4,635,101</b>	<b>4,725,138</b>	<b>4,816,952</b>

Customer Type	Demand 2011(AF)	Demand 2012(AF)	Demand 2013(AF)	Demand 2014(AF)	Demand 2015(AF)	Demand 2016(AF)	Demand 2017(AF)	Demand 2018(AF)	Demand 2019(AF)	Demand 2020(AF)
Residential	6,442	6,564	6,689	6,817	6,947	7,079	7,214	7,351	7,491	7,634
Multi-Residential	550	566	582	598	615	633	651	669	688	708
Commercial	672	684	696	709	721	734	747	761	774	788
Industrial	188	191	195	198	202	205	209	213	217	221
Government	662	674	686	698	710	723	736	749	762	776
Other	98	100	101	103	105	107	109	111	113	115
Unaccounted	690	703	716	730	744	758	772	787	802	817
<b>Total</b>	<b>9,301</b>	<b>9,482</b>	<b>9,666</b>	<b>9,853</b>	<b>10,044</b>	<b>10,239</b>	<b>10,438</b>	<b>10,641</b>	<b>10,848</b>	<b>11,058</b>

**California Water Service Company - Selma District**  
**Water Supply and Demand Analysis and Projections**

Scenario #2: Based on Maintaining Growth at the

- 10-Year
- 5-Year

Average Growth Rate

- 2020's Projections
- Low
  - Average
  - High

Demand per Service for each Customer Class.

Customer Type	Projected Services 2021	Projected Services 2022	Projected Services 2023	Projected Services 2024	Projected Services 2025	Projected Services 2026	Projected Services 2027	Projected Services 2028	Projected Services 2029	Projected Services 2030
Residential	6,702	6,830	6,960	7,092	7,228	7,365	7,506	7,649	7,794	7,943
Multi-Residential	71	73	76	78	80	82	85	87	89	92
Commercial	546	556	566	576	586	597	607	618	629	640
Industrial	22	23	23	23	24	24	25	25	26	26
Government	151	153	156	159	162	165	168	171	174	177
Other	9	9	9	9	9	9	10	10	10	10
<b>Total</b>	<b>7,502</b>	<b>7,644</b>	<b>7,790</b>	<b>7,938</b>	<b>8,089</b>	<b>8,243</b>	<b>8,399</b>	<b>8,559</b>	<b>8,722</b>	<b>8,888</b>

Customer Type	Demand 2021(ccf)	Demand 2022(ccf)	Demand 2023(ccf)	Demand 2024(ccf)	Demand 2025(ccf)	Demand 2026(ccf)	Demand 2027(ccf)	Demand 2028(ccf)	Demand 2029(ccf)	Demand 2030(ccf)
Residential	3,388,766	3,453,322	3,519,108	3,586,147	3,654,463	3,724,081	3,795,024	3,867,320	3,940,992	4,016,068
Multi-Residential	317,179	326,203	335,483	345,028	354,844	364,939	375,322	386,000	396,981	408,275
Commercial	349,303	355,524	361,856	368,300	374,860	381,536	388,331	395,247	402,287	409,451
Industrial	97,762	99,504	101,276	103,079	104,915	106,784	108,686	110,621	112,592	114,597
Government	344,052	350,180	356,416	362,764	369,225	375,801	382,494	389,306	396,240	403,297
Other	50,820	51,725	52,646	53,583	54,538	55,509	56,498	57,504	58,528	59,570
Unaccounted	362,695	369,593	376,622	383,786	391,087	398,526	406,108	413,834	421,708	429,732
<b>Total</b>	<b>4,910,577</b>	<b>5,006,050</b>	<b>5,103,407</b>	<b>5,202,688</b>	<b>5,303,931</b>	<b>5,407,176</b>	<b>5,512,462</b>	<b>5,619,832</b>	<b>5,729,327</b>	<b>5,840,990</b>

Customer Type	Demand 2021(AF)	Demand 2022(AF)	Demand 2023(AF)	Demand 2024(AF)	Demand 2025(AF)	Demand 2026(AF)	Demand 2027(AF)	Demand 2028(AF)	Demand 2029(AF)	Demand 2030(AF)
Residential	7,780	7,928	8,079	8,233	8,390	8,549	8,712	8,878	9,047	9,220
Multi-Residential	728	749	770	792	815	838	862	886	911	937
Commercial	802	816	831	846	861	876	891	907	924	940
Industrial	224	228	232	237	241	245	250	254	258	263
Government	790	804	818	833	848	863	878	894	910	926
Other	117	119	121	123	125	127	130	132	134	137
Unaccounted	833	848	865	881	898	915	932	950	968	987
<b>Total</b>	<b>11,273</b>	<b>11,492</b>	<b>11,716</b>	<b>11,944</b>	<b>12,176</b>	<b>12,413</b>	<b>12,655</b>	<b>12,901</b>	<b>13,153</b>	<b>13,409</b>

**California Water Service Company - Selma District**  
**Water Supply and Demand Analysis and Projections**

Scenario #2: Based on Maintaining Growth at the

- 10-Year
- 5-Year

Average Growth Rate

- Low
- Average
- High

**2030's Projections**

Demand per Service for each Customer Class.

Customer Type	Projected Services 2031	Projected Services 2032	Projected Services 2033	Projected Services 2034	Projected Services 2035	Projected Services 2036	Projected Services 2037	Projected Services 2038	Projected Services 2039	Projected Services 2040
Residential	8,094	8,248	8,405	8,566	8,729	8,895	9,064	9,237	9,413	9,592
Multi-Residential	95	97	100	103	106	109	112	115	118	122
Commercial	652	663	675	687	699	712	725	737	751	764
Industrial	27	27	27	28	28	29	30	30	31	31
Government	180	183	186	190	193	196	200	204	207	211
Other	10	11	11	11	11	11	11	12	12	12
<b>Total</b>	<b>9,057</b>	<b>9,229</b>	<b>9,405</b>	<b>9,584</b>	<b>9,767</b>	<b>9,952</b>	<b>10,142</b>	<b>10,335</b>	<b>10,532</b>	<b>10,732</b>

Customer Type	Demand 2031(ccf)	Demand 2032(ccf)	Demand 2033(ccf)	Demand 2034(ccf)	Demand 2035(ccf)	Demand 2036(ccf)	Demand 2037(ccf)	Demand 2038(ccf)	Demand 2039(ccf)	Demand 2040(ccf)
Residential	4,092,574	4,170,538	4,249,986	4,330,949	4,413,453	4,497,529	4,583,207	4,670,517	4,759,491	4,850,159
Multi-Residential	419,891	431,837	444,123	456,758	469,753	483,117	496,862	510,997	525,535	540,487
Commercial	416,744	424,166	431,720	439,409	447,235	455,200	463,308	471,559	479,958	488,506
Industrial	116,638	118,715	120,829	122,981	125,172	127,401	129,670	131,979	134,330	136,722
Government	410,479	417,790	425,231	432,804	440,512	448,358	456,343	464,471	472,743	481,162
Other	60,631	61,711	62,810	63,929	65,068	66,226	67,406	68,606	69,828	71,072
Unaccounted	437,909	446,242	454,734	463,388	472,207	481,195	490,354	499,689	509,201	518,895
<b>Total</b>	<b>5,954,866</b>	<b>6,070,998</b>	<b>6,189,434</b>	<b>6,310,218</b>	<b>6,433,400</b>	<b>6,559,027</b>	<b>6,687,150</b>	<b>6,817,819</b>	<b>6,951,086</b>	<b>7,087,003</b>

Customer Type	Demand 2031(AF)	Demand 2032(AF)	Demand 2033(AF)	Demand 2034(AF)	Demand 2035(AF)	Demand 2036(AF)	Demand 2037(AF)	Demand 2038(AF)	Demand 2039(AF)	Demand 2040(AF)
Residential	9,395	9,574	9,757	9,943	10,132	10,325	10,522	10,722	10,926	11,135
Multi-Residential	964	991	1,020	1,049	1,078	1,109	1,141	1,173	1,206	1,241
Commercial	957	974	991	1,009	1,027	1,045	1,064	1,083	1,102	1,121
Industrial	268	273	277	282	287	292	298	303	308	314
Government	942	959	976	994	1,011	1,029	1,048	1,066	1,085	1,105
Other	139	142	144	147	149	152	155	157	160	163
Unaccounted	1,005	1,024	1,044	1,064	1,084	1,105	1,126	1,147	1,169	1,191
<b>Total</b>	<b>13,671</b>	<b>13,937</b>	<b>14,209</b>	<b>14,486</b>	<b>14,769</b>	<b>15,058</b>	<b>15,352</b>	<b>15,652</b>	<b>15,958</b>	<b>16,270</b>

## California Water Service Company - Selma District

### Water Supply and Demand Analysis and Projections

Scenario #4: Based on Maintaining Growth at the  10-Year Average Annual Growth  
 5-Year

Summary of Historical Growth Rate from Worksheet 2			
Customer Type	5 Yr. Avg. Historical Growth Rate	Individual Growth Rate Selected	Notes
Single Family Residential	1.274%	1.274%	Historical growth rate used
Multi Family Residential	4.664%	4.664%	Overall growth rate used
Commercial	-0.848%	1.176%	Overall growth rate used
Industrial	1.324%	1.324%	Historical growth rate used
Government	5.396%	1.176%	Overall growth rate used
Other	-8.272%	1.176%	Overall growth rate used
Overall	1.176%	1.315%	

**California Water Service Company - Selma District**  
**Water Supply and Demand Analysis and Projections**

**30-year projection Summary**

Scenario #4: Based on Maintaining Growth at the  10-Year Average Annual Growth  
 5-Year

Customer Type	Projected Services 2010	Projected Services 2015	Projected Services 2020	Projected Services 2025	Projected Services 2030	Projected Services 2035	Projected Services 2040	Services projected to be added from 2010 - 2040
Single Family Residential	5,412	5,766	6,142	6,544	6,971	7,427	7,912	2,500
Multi Family Residential	53	67	84	106	133	167	210	156
Commercial	447	474	503	533	565	599	635	188
Industrial	18	19	21	22	24	25	27	9
Government	123	131	139	147	156	165	175	52
Other	7	8	8	8	9	9	10	3
<b>Total</b>	<b>6,061</b>	<b>6,465</b>	<b>6,897</b>	<b>7,360</b>	<b>7,858</b>	<b>8,393</b>	<b>8,969</b>	<b>2,908</b>

## California Water Service Company - Selma District

### Water Supply and Demand Analysis and Projections

Worksheet 13

Scenario #4: Based on Maintaining Growth at the  10-Year Average Annual Growth  
 5-Year

#### 2000's Projections

Customer Type	Actual Services 2001	Actual Services 2002	Actual Services 2003	Actual Services 2004	Actual Services 2005	Actual Services 2006	Actual Services 2007	Actual Services 2008	Actual Services 2009	Projected Services 2010
Residential	4,553	4,681	4,820	5,018	5,160	5,306	5,355	5,355	5,344	5,412
Multi-Residential	41	41	41	41	41	41	41	48	51	53
Commercial	468	466	464	464	469	470	429	454	442	447
Industrial	19	19	19	17	17	17	17	16	18	18
Government	88	91	93	94	97	104	105	115	122	123
Other	3	5	8	12	10	12	12	11	7	7
<b>Total</b>	<b>5,172</b>	<b>5,303</b>	<b>5,445</b>	<b>5,646</b>	<b>5,794</b>	<b>5,950</b>	<b>5,959</b>	<b>5,999</b>	<b>5,984</b>	<b>6,061</b>

#### 2010's Projections

Customer Type	Projected Services 2011	Projected Services 2012	Projected Services 2013	Projected Services 2014	Projected Services 2015	Projected Services 2016	Projected Services 2017	Projected Services 2018	Projected Services 2019	Projected Services 2020
Residential	5,481	5,551	5,622	5,693	5,766	5,839	5,914	5,989	6,065	6,142
Multi-Residential	56	58	61	64	67	70	73	77	80	84
Commercial	452	458	463	469	474	480	485	491	497	503
Industrial	18	19	19	19	19	20	20	20	21	21
Government	125	126	128	129	131	132	134	136	137	139
Other	7	7	7	7	8	8	8	8	8	8
<b>Total</b>	<b>6,140</b>	<b>6,219</b>	<b>6,300</b>	<b>6,382</b>	<b>6,465</b>	<b>6,549</b>	<b>6,634</b>	<b>6,720</b>	<b>6,808</b>	<b>6,897</b>

## California Water Service Company - Selma District

### Water Supply and Demand Analysis and Projections

Worksheet 13

#### 2020's Projections

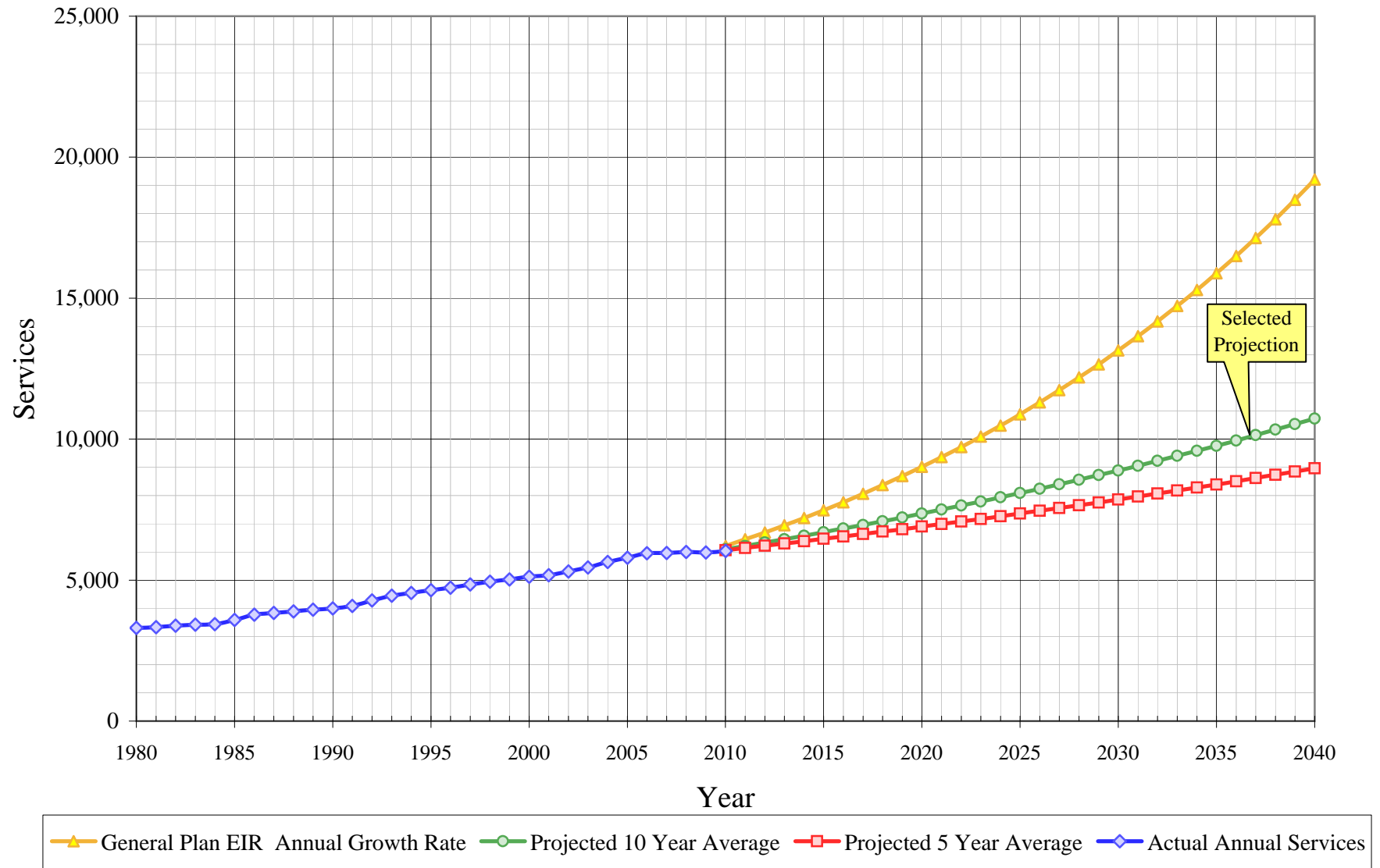
Scenario #4: Based on Maintaining Growth at the  10-Year Average Annual Growth  
 5-Year

Customer Type	Projected Services 2021	Projected Services 2022	Projected Services 2023	Projected Services 2024	Projected Services 2025	Projected Services 2026	Projected Services 2027	Projected Services 2028	Projected Services 2029	Projected Services 2030
Residential	6,221	6,300	6,380	6,462	6,544	6,627	6,712	6,797	6,884	6,971
Multi-Residential	88	92	97	101	106	111	116	121	127	133
Commercial	509	515	521	527	533	539	546	552	558	565
Industrial	21	21	22	22	22	23	23	23	23	24
Government	140	142	144	145	147	149	151	152	154	156
Other	8	8	8	8	8	9	9	9	9	9
<b>Total</b>	<b>6,987</b>	<b>7,078</b>	<b>7,171</b>	<b>7,265</b>	<b>7,360</b>	<b>7,457</b>	<b>7,555</b>	<b>7,655</b>	<b>7,756</b>	<b>7,858</b>

#### 2030's Projections

Customer Type	Projected Services 2031	Projected Services 2032	Projected Services 2033	Projected Services 2034	Projected Services 2035	Projected Services 2036	Projected Services 2037	Projected Services 2038	Projected Services 2039	Projected Services 2040
Residential	7,060	7,150	7,241	7,334	7,427	7,522	7,617	7,714	7,813	7,912
Multi-Residential	139	146	152	159	167	175	183	191	200	210
Commercial	572	578	585	592	599	606	613	620	628	635
Industrial	24	24	25	25	25	26	26	26	27	27
Government	158	160	162	163	165	167	169	171	173	175
Other	9	9	9	9	9	10	10	10	10	10
<b>Total</b>	<b>7,962</b>	<b>8,067</b>	<b>8,174</b>	<b>8,283</b>	<b>8,393</b>	<b>8,505</b>	<b>8,618</b>	<b>8,734</b>	<b>8,851</b>	<b>8,969</b>

## Selma District Historical & Projected Services





**California Water Service Company - Selma District**

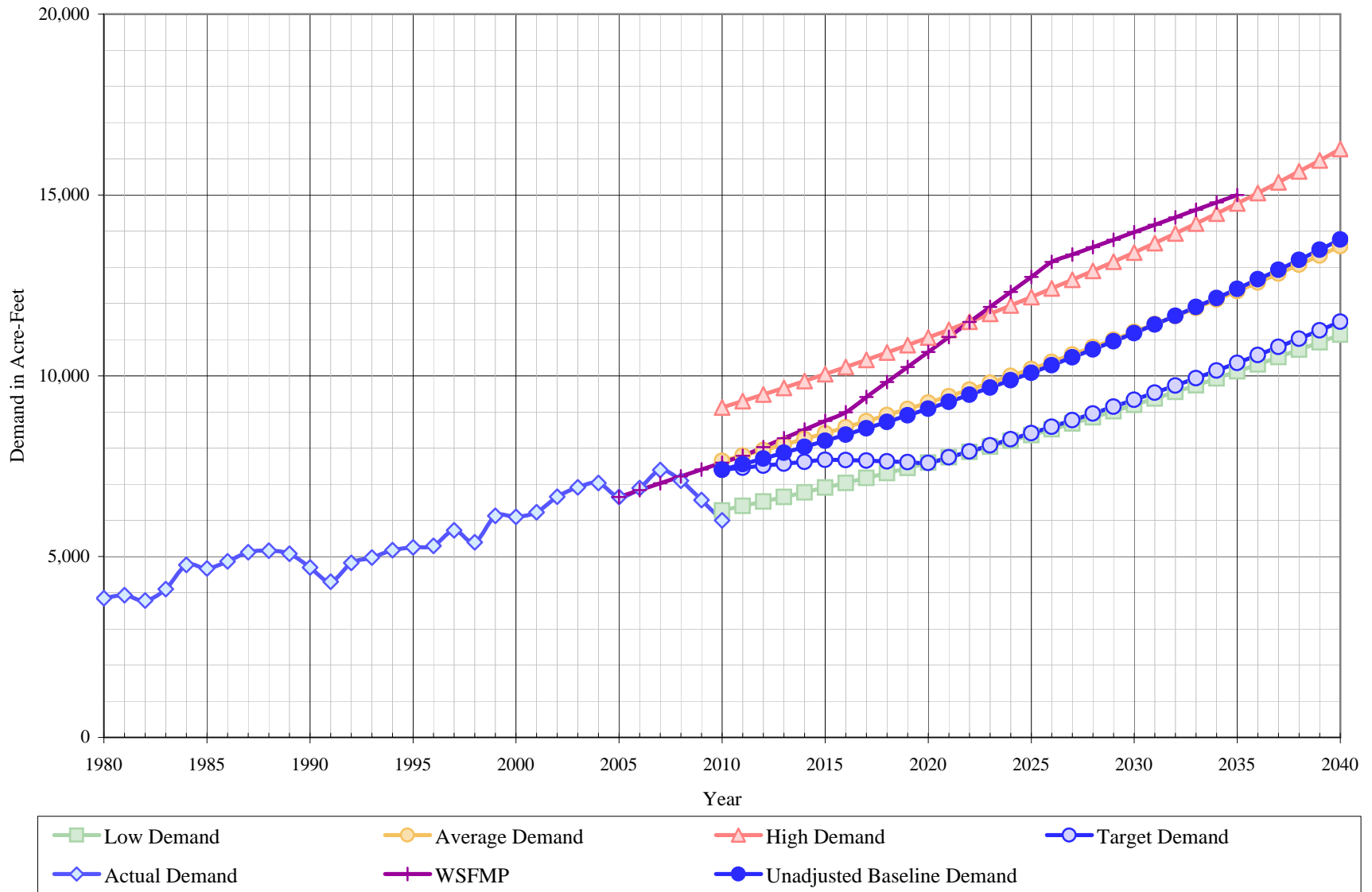
**Water Supply and Demand Analysis and Projections**

**Actual & Projected Annual Average Services**

Year	Actual Annual Services	Projected Services		
		5 Year Average Annual Growth Rate	10 Year Average Annual Growth Rate	General Plan EIR Annual Growth Rate
1980	3,304			
1981	3,332			
1982	3,382			
1983	3,419			
1984	3,436			
1985	3,587			
1986	3,771			
1987	3,835			
1988	3,893			
1989	3,949			
1990	3,993			
1991	4,080			
1992	4,277			
1993	4,450			
1994	4,547			
1995	4,643			
1996	4,734			
1997	4,842			
1998	4,947			
1999	5,019			
2000	5,124			
2001	5,172			
2002	5,303			
2003	5,445			
2004	5,646			
2005	5,794			
2006	5,950			
2007	5,959			
2008	5,999			
2009	5,984			
2010	6,031	6,061	6,098	6,210

Year	Actual Annual Services	Projected Services		
		5 Year Average Annual Growth Rate	10 Year Average Annual Growth Rate	General Plan EIR Annual Growth Rate
2011		6,140	6,214	6,445
2012		6,219	6,332	6,689
2013		6,300	6,452	6,943
2014		6,382	6,575	7,206
2015		6,465	6,700	7,480
2016		6,549	6,827	7,765
2017		6,634	6,957	8,060
2018		6,720	7,089	8,367
2019		6,808	7,224	8,687
2020		6,897	7,362	9,018
2021		6,987	7,502	9,363
2022		7,078	7,644	9,721
2023		7,171	7,790	10,093
2024		7,265	7,938	10,480
2025		7,360	8,089	10,882
2026		7,457	8,243	11,300
2027		7,555	8,399	11,734
2028		7,655	8,559	12,186
2029		7,756	8,722	12,655
2030		7,858	8,888	13,142
2031		7,962	9,057	13,649
2032		8,067	9,229	14,176
2033		8,174	9,405	14,723
2034		8,283	9,584	15,292
2035		8,393	9,767	15,883
2036		8,505	9,952	16,497
2037		8,618	10,142	17,136
2038		8,734	10,335	17,800
2039		8,851	10,532	18,490
2040		8,969	10,732	19,208

# Selma District Historical & Projected Demand



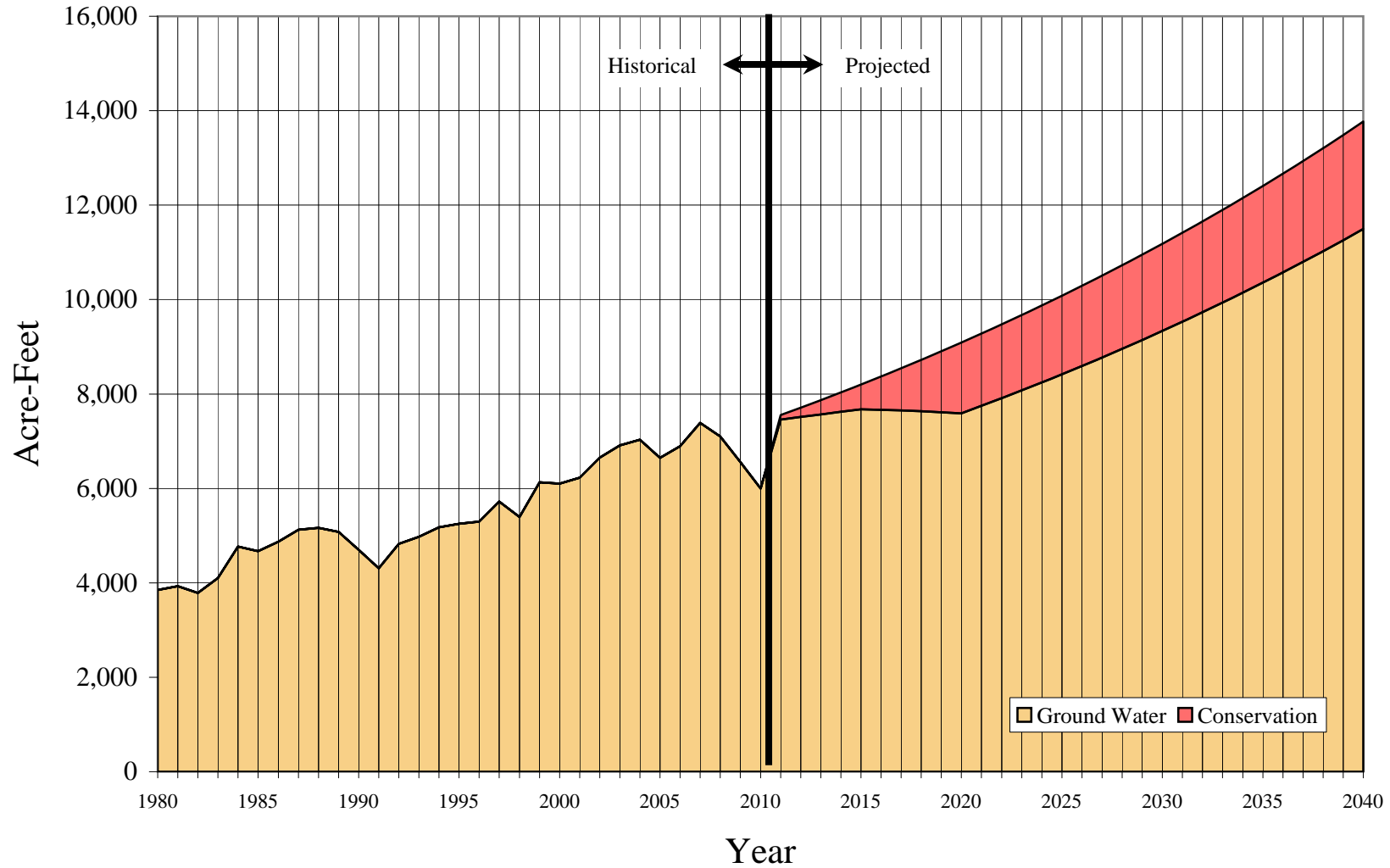
**California Water Service Company - Selma District**  
**Water Supply and Demand Analysis and Projections**  
**Actual & Projected Demand in Acre-Feet**

Water	Actual Demand	Projection			Unadjusted Baseline Demand	Target Demand	WSFMP
		Low	Average	High			
1980	3,848						
1981	3,930						
1982	3,787						
1983	4,103						
1984	4,767						
1985	4,670						
1986	4,871						
1987	5,123						
1988	5,167						
1989	5,077						
1990	4,698						
1991	4,307						
1992	4,826						
1993	4,974						
1994	5,175						
1995	5,252						
1996	5,297						
1997	5,723						
1998	5,397						
1999	6,128						
2000	6,099						
2001	6,228						
2002	6,652						
2003	6,912						
2004	7,032						
2005	6,648						6,649
2006	6,893						6,839
2007	7,391						7,029
2008	7,101						7,219
2009	6,563						7,408
2010	6,000	6,278	7,647	9,125	7,400	7,400	7,598

Water	Actual Demand	Projection			Unadjusted Baseline Demand	Target Demand	WS&FMP
		Low	Average	High			
2011		6,398	7,794	9,301	7,553	7,456	7,788
2012		6,521	7,945	9,482	7,711	7,513	8,029
2013		6,647	8,098	9,666	7,870	7,567	8,270
2014		6,775	8,254	9,853	8,034	7,621	8,512
2015		6,905	8,413	10,044	8,202	7,675	8,753
2016		7,038	8,575	10,239	8,372	7,665	8,994
2017		7,174	8,741	10,438	8,545	7,651	9,409
2018		7,312	8,910	10,641	8,724	7,635	9,824
2019		7,453	9,082	10,848	8,906	7,614	10,239
2020		7,596	9,257	11,058	9,090	7,589	10,654
2021		7,743	9,436	11,273	9,281	7,748	11,070
2022		7,892	9,618	11,492	9,474	7,909	11,485
2023		8,044	9,804	11,716	9,673	8,075	11,900
2024		8,199	9,994	11,944	9,875	8,244	12,315
2025		8,358	10,187	12,176	10,080	8,415	12,730
2026		8,519	10,384	12,413	10,290	8,590	13,145
2027		8,683	10,585	12,655	10,507	8,771	13,351
2028		8,851	10,790	12,901	10,726	8,954	13,557
2029		9,022	10,999	13,153	10,951	9,142	13,763
2030		9,196	11,211	13,409	11,182	9,335	13,969
2031		9,374	11,429	13,671	11,415	9,530	14,176
2032		9,555	11,650	13,937	11,655	9,730	14,382
2033		9,739	11,876	14,209	11,900	9,934	14,588
2034		9,928	12,106	14,486	12,151	10,144	14,794
2035		10,120	12,341	14,769	12,405	10,356	15,000
2036		10,315	12,580	15,058	12,667	10,575	
2037		10,515	12,824	15,352	12,933	10,796	
2038		10,719	13,073	15,652	13,207	11,025	
2039		10,926	13,326	15,958	13,484	11,256	
2040		11,138	13,585	16,270	13,769	11,495	

# Selma District

## Historical and Projected Distribution of Demand by Source



**California Water Service Company - Selma District**  
**Water Supply and Demand Analysis and Projections**  
**Historical and Projected Distribution of Demand by Source**

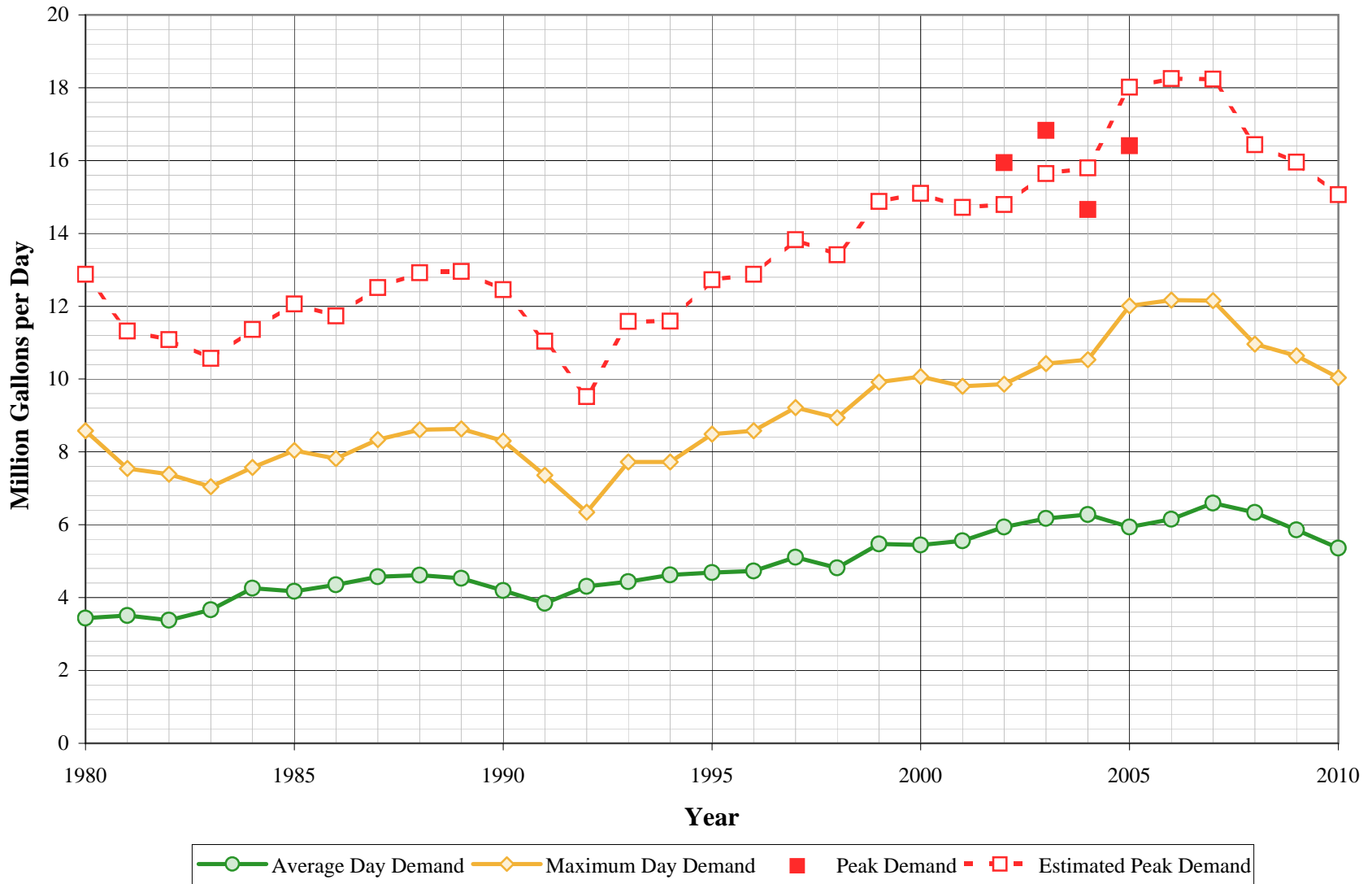
Worksheet 17

Year	Purchased Water		Ground Water		Conservation		Total	
	kGal	AF	kGal	AF	(kG)	(AF)	kGal	AF
1980	0	0	1,253,726	3,848			1,253,726	3,848
1981	0	0	1,280,668	3,930			1,280,668	3,930
1982	0	0	1,233,951	3,787			1,233,951	3,787
1983	0	0	1,336,869	4,103			1,336,869	4,103
1984	0	0	1,553,421	4,767			1,553,421	4,767
1985	0	0	1,521,849	4,670			1,521,849	4,670
1986	0	0	1,587,265	4,871			1,587,265	4,871
1987	0	0	1,669,325	5,123			1,669,325	5,123
1988	0	0	1,683,662	5,167			1,683,662	5,167
1989	0	0	1,654,300	5,077			1,654,300	5,077
1990	0	0	1,530,884	4,698			1,530,884	4,698
1991	0	0	1,403,435	4,307			1,403,435	4,307
1992	0	0	1,572,594	4,826			1,572,594	4,826
1993	0	0	1,620,619	4,974			1,620,619	4,974
1994	0	0	1,686,421	5,175			1,686,421	5,175
1995	0	0	1,711,284	5,252			1,711,284	5,252
1996	0	0	1,726,114	5,297			1,726,114	5,297
1997	0	0	1,864,908	5,723			1,864,908	5,723
1998	0	0	1,758,710	5,397			1,758,710	5,397
1999	0	0	1,996,784	6,128			1,996,784	6,128
2000	0	0	1,987,485	6,099			1,987,485	6,099
2001	0	0	2,029,443	6,228			2,029,443	6,228
2002	0	0	2,167,461	6,652			2,167,461	6,652
2003	0	0	2,252,349	6,912			2,252,349	6,912
2004	0	0	2,291,341	7,032			2,291,341	7,032
2005	0	0	2,166,251	6,648			2,166,251	6,648
2006	0	0	2,246,002	6,893			2,246,002	6,893
2007	0	0	2,408,307	7,391			2,408,307	7,391
2008	0	0	2,313,692	7,101			2,313,692	7,101
2009	0	0	2,138,646	6,563			2,138,646	6,563
2010	0	0	1,955,001	6,000	0	0	1,955,001	6,000

Year	Purchased Water		Ground Water		Conservation		Total	
	kGal	AF	kGal	AF	(kG)	(AF)	kGal	AF
2011	0	0	2,429,400	7,456	31,618	97	2,461,018	7,553
2012	0	0	2,448,155	7,513	64,565	198	2,512,720	7,711
2013	0	0	2,465,582	7,567	98,840	303	2,564,422	7,870
2014	0	0	2,483,464	7,621	134,540	413	2,618,004	8,034
2015	0	0	2,500,848	7,675	171,678	527	2,672,526	8,202
2016	0	0	2,497,668	7,665	230,321	707	2,727,989	8,372
2017	0	0	2,493,089	7,651	291,302	894	2,784,391	8,545
2018	0	0	2,487,879	7,635	354,795	1,089	2,842,673	8,724
2019	0	0	2,481,118	7,614	420,778	1,291	2,901,896	8,906
2020	0	0	2,472,751	7,589	489,307	1,502	2,962,058	9,090
2021	0	0	2,524,544	7,748	499,556	1,533	3,024,100	9,281
2022	0	0	2,577,123	7,909	509,960	1,565	3,087,083	9,474
2023	0	0	2,631,270	8,075	520,675	1,598	3,151,946	9,673
2024	0	0	2,686,203	8,244	531,545	1,631	3,217,748	9,875
2025	0	0	2,741,920	8,415	542,570	1,665	3,284,491	10,080
2026	0	0	2,799,207	8,590	553,906	1,700	3,353,114	10,290
2027	0	0	2,858,064	8,771	565,553	1,736	3,423,616	10,507
2028	0	0	2,917,705	8,954	577,355	1,772	3,495,059	10,726
2029	0	0	2,978,915	9,142	589,467	1,809	3,568,382	10,951
2030	0	0	3,041,695	9,335	601,890	1,847	3,643,585	11,182
2031	0	0	3,105,260	9,530	614,468	1,886	3,719,728	11,415
2032	0	0	3,170,394	9,730	627,357	1,925	3,797,751	11,655
2033	0	0	3,237,098	9,934	640,556	1,966	3,877,654	11,900
2034	0	0	3,305,372	10,144	654,066	2,007	3,959,438	12,151
2035	0	0	3,374,430	10,356	667,731	2,049	4,042,161	12,405
2036	0	0	3,445,842	10,575	681,862	2,093	4,127,704	12,667
2037	0	0	3,518,039	10,796	696,149	2,136	4,214,188	12,933
2038	0	0	3,592,591	11,025	710,901	2,182	4,303,491	13,207
2039	0	0	3,667,927	11,256	725,808	2,227	4,393,735	13,484
2040	0	0	3,745,617	11,495	741,182	2,275	4,486,799	13,769

# Selma District

## Average Day, Maximum Day, and Peak Demands



**California Water Service Company - Selma District**

**Water Supply and Demand Analysis and Projections**

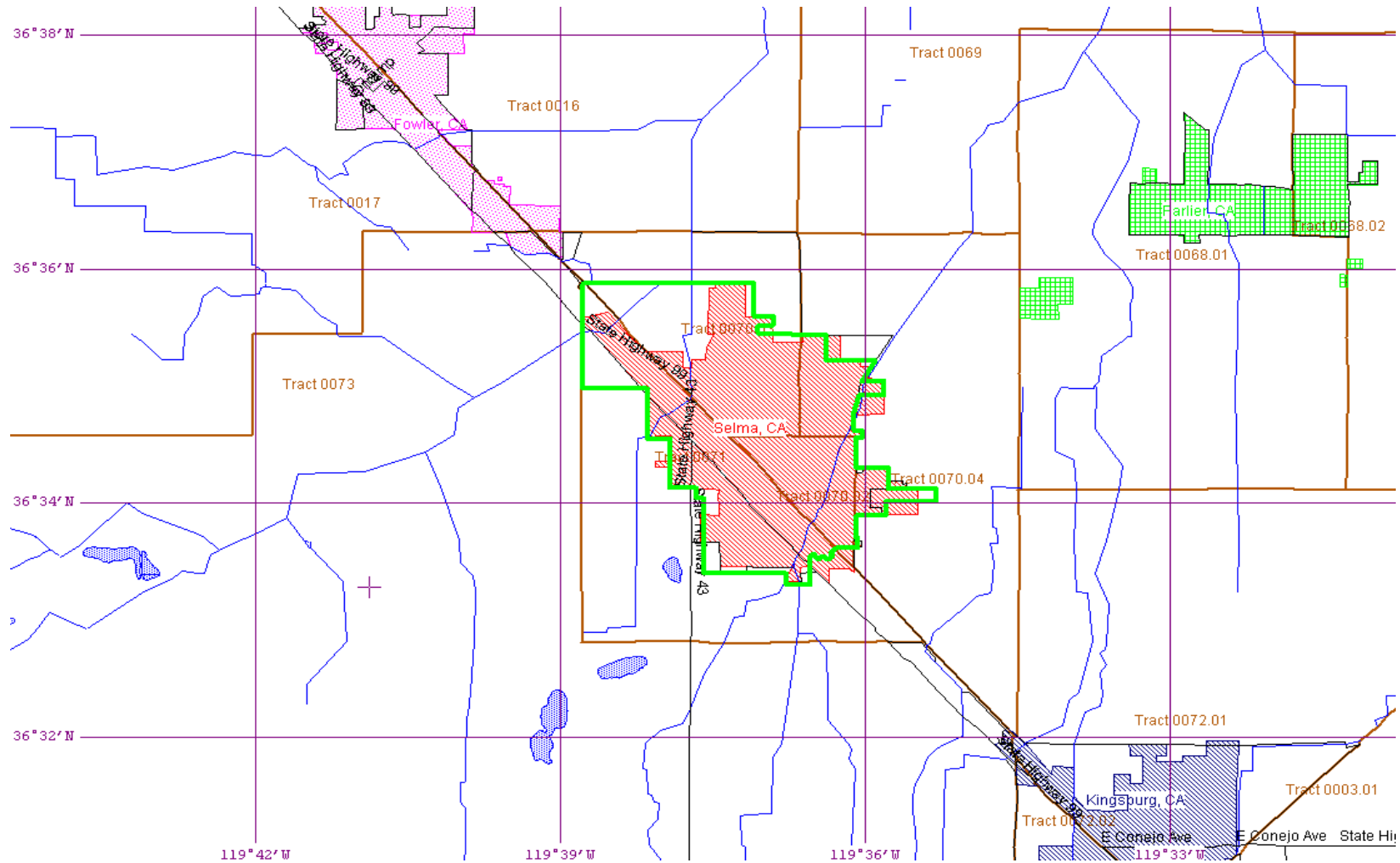
**Historical and Projected Average Day, Maximum Day, and Peak Demand**

Year	Historical Annual Demand		Average Day Demand		Maximum Day Demand		MDD ADD Ratio	Estimated Peak Hour Demand		PHD MDD Ratio	PHD ADD Ratio	Measured Peak Hour Demand		PHD MDD Ratio
	(AFY)	(MGY)	(MGD)	Per Service (GPD)	(MGD)	Per Service (GPD)		(MGD)	(GPM)			(MGD)	(GPM)	
1980	3,848	1,254	3.435	1,040	8.582	2,597	2.50	12.873	8,940	1.50	3.75			
1981	3,930	1,281	3.509	1,053	7.546	2,265	2.15	11.319	7,860	1.50	3.23			
1982	3,787	1,234	3.381	1,000	7.387	2,184	2.19	11.081	7,695	1.50	3.28			
1983	4,103	1,337	3.663	1,071	7.044	2,060	1.92	10.566	7,338	1.50	2.88			
1984	4,767	1,553	4.256	1,239	7.575	2,205	1.78	11.363	7,891	1.50	2.67			
1985	4,670	1,522	4.169	1,162	8.039	2,241	1.93	12.059	8,374	1.50	2.89			
1986	4,871	1,587	4.349	1,153	7.820	2,074	1.80	11.730	8,146	1.50	2.70			
1987	5,123	1,669	4.574	1,193	8.341	2,175	1.82	12.512	8,689	1.50	2.74			
1988	5,167	1,684	4.613	1,185	8.613	2,212	1.87	12.920	8,972	1.50	2.80			
1989	5,077	1,654	4.532	1,148	8.635	2,187	1.91	12.953	8,995	1.50	2.86			
1990	4,698	1,531	4.194	1,050	8.305	2,080	1.98	12.458	8,651	1.50	2.97			
1991	4,307	1,403	3.845	942	7.362	1,804	1.91	11.043	7,669	1.50	2.87			
1992	4,826	1,573	4.308	1,007	6.345	1,484	1.47	9.518	6,609	1.50	2.21			
1993	4,974	1,621	4.440	998	7.724	1,736	1.74	11.586	8,046	1.50	2.61			
1994	5,175	1,686	4.620	1,016	7.725	1,699	1.67	11.588	8,047	1.50	2.51			
1995	5,252	1,711	4.688	1,010	8.486	1,828	1.81	12.729	8,840	1.50	2.71			
1996	5,297	1,726	4.729	999	8.582	1,813	1.81	12.873	8,940	1.50	2.72			
1997	5,723	1,865	5.109	1,055	9.216	1,903	1.80	13.824	9,600	1.50	2.71			
1998	5,397	1,759	4.818	974	8.941	1,807	1.86	13.412	9,314	1.50	2.78			
1999	6,128	1,997	5.471	1,090	9.919	1,976	1.81	14.879	10,332	1.50	2.72			
2000	6,099	1,987	5.445	1,063	10.067	1,965	1.85	15.101	10,486	1.50	2.77			
2001	6,228	2,029	5.560	1,075	9.807	1,896	1.76	14.711	10,216	1.50	2.65			
2002	6,652	2,167	5.938	1,120	9.860	1,859	1.66	14.790	10,271	1.50	2.49	15.941	11,070	1.617
2003	6,912	2,252	6.171	1,133	10.427	1,915	1.69	15.641	10,862	1.50	2.53	16.826	11,685	1.614
2004	7,032	2,291	6.278	1,112	10.532	1,865	1.68	15.798	10,971	1.50	2.52	14.652	10,175	1.391
2005	6,648	2,166	5.935	1,024	12.011	2,073	2.02	18.017	12,512	1.50	3.04	16.409	11,395	1.366
2006	6,893	2,246	6.153	1,034	12.168	2,045	1.98	18.252	12,675	1.50	2.97			
2007	7,391	2,408	6.598	1,107	12.155	2,040	1.84	18.233	12,661	1.50	2.76			
2008	7,101	2,314	6.339	1,057	10.958	1,827	1.73	16.437	11,415	1.50	2.59			
2009	6,563	2,139	5.859	979	10.638	1,778	1.82	15.957	11,081	1.50	2.72			
2010	6,000	1,955	5.356	888	10.040	1,665	1.87	15.060	10,458	1.50	2.81			
5 year Average (2006-2010)			6.061	1,013	11.192	1,871	1.85	16.788	11,658	1.50	2.77			
10 year Average (2001-2010)			6.019	1,053	10.860	1,896	1.81	16.289	11,312	1.50	2.71			

# California Water Service Company - Selma District

## Water Supply and Demand Analysis and Projections

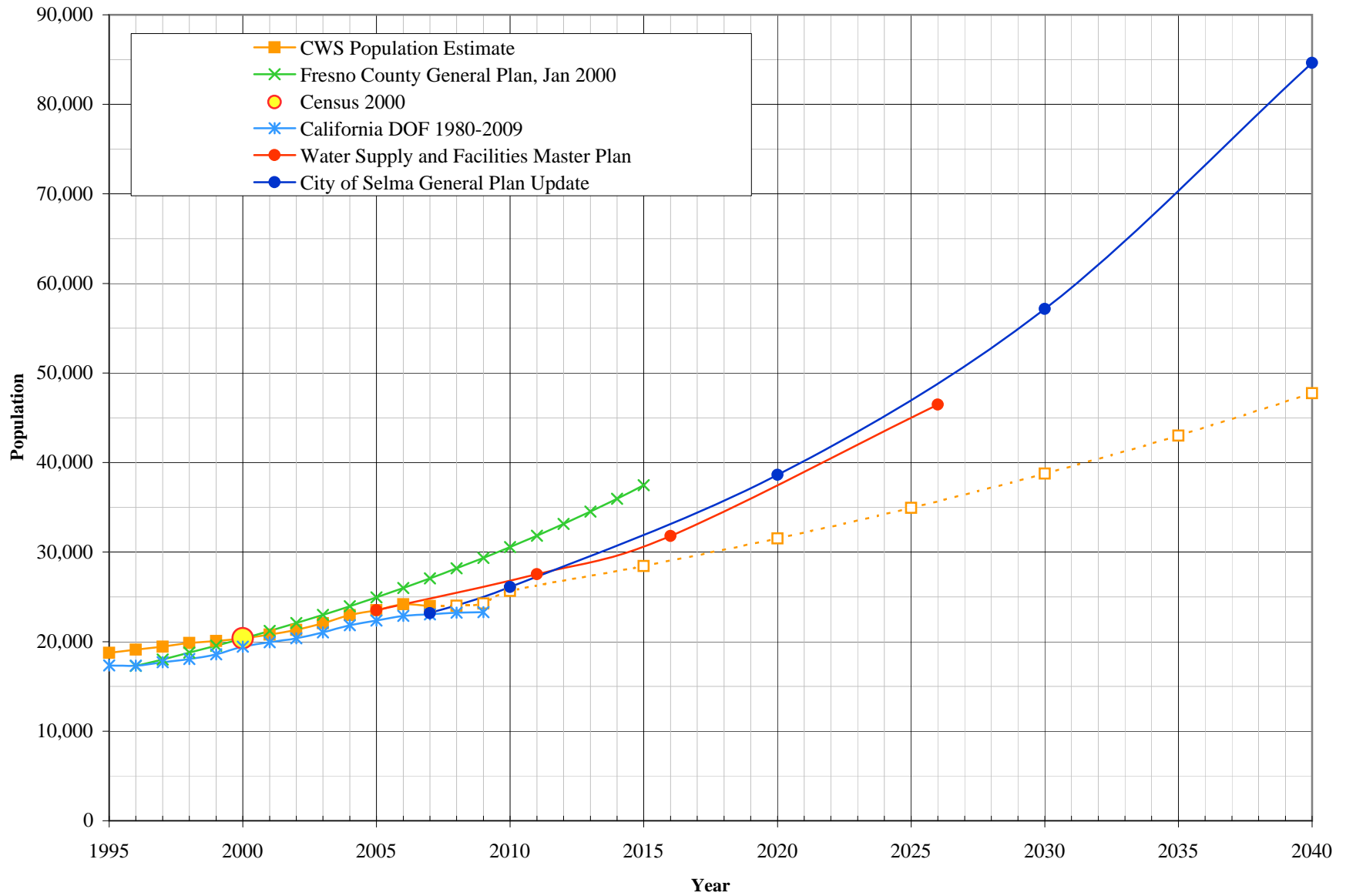
### US Census 2000 Tract Map Summary



Census Tract Blocks	Population	Housing Units	Density
278	20,370	6,050	3.37



## Selma District Population Estimates



**California Water Service Company - Selma District**  
**Water Supply and Demand Analysis and Projections**

Population as of the 2005 Average Annual Services

Estimated District Population based on 2000 U.S. Census Data & Annual Service Count using the Ten Year Average Growth Rate

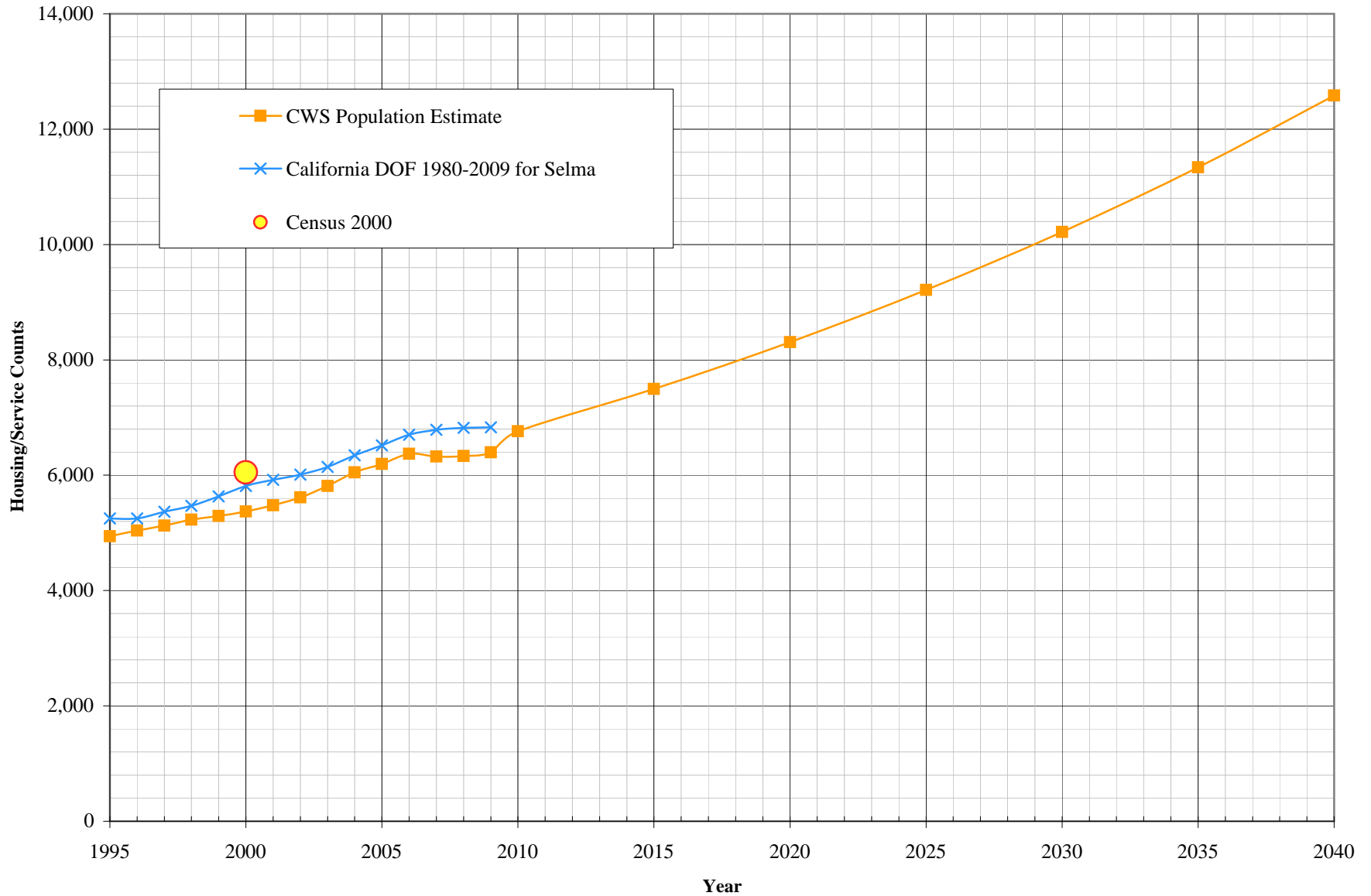
District Communities Served Selma

Year	Single Family Residential Services (DU)	Multi Family Residential			Flat Rate Residential Services (DU)	Total Residential Dwelling Units	Estimated District Population
		Services	Residential Units (DU)	Unit Density			
1995	1,265	37	849	22.9	2,829	4,943	18,750
1996	1,352	37	868	23.5	2,822	5,042	19,120
1997	1,458	38	849	22.3	2,817	5,124	19,430
1998	1,569	39	854	21.9	2,807	5,230	19,840
1999	1,629	39	865	22.2	2,800	5,294	20,080
2000	1,718	39	858	22.0	2,795	5,371	20,370
2001	1,765	41	925	22.6	2,788	5,478	20,780
2002	1,876	41	936	22.8	2,805	5,617	21,300
2003	2,042	41	995	24.3	2,778	5,815	22,050
2004	2,247	41	1,032	25.2	2,771	6,050	22,950
2005	2,389	41	1,036	25.3	2,771	6,196	23,500
2006	2,554	41	1,066	26.0	2,752	6,372	24,170
2007	2,622	41	968	23.6	2,733	6,323	23,980
2008	2,649	48	976	20.3	2,706	6,331	24,010
2009	2,676	51	1,052	20.6	2,668	6,396	24,260
2010	5,446	52	1,318	25.1	0	6,763	25,650
2015	5,985	60	1,511	25.0	0	7,495	28,430
2020	6,577	69	1,732	24.9	0	8,309	31,510
2025	7,228	80	1,986	24.9	0	9,213	34,940
2030	7,943	92	2,276	24.8	0	10,219	38,760
2035	8,729	106	2,610	24.7	0	11,338	43,000
2040	9,592	122	2,992	24.6	0	12,584	47,730

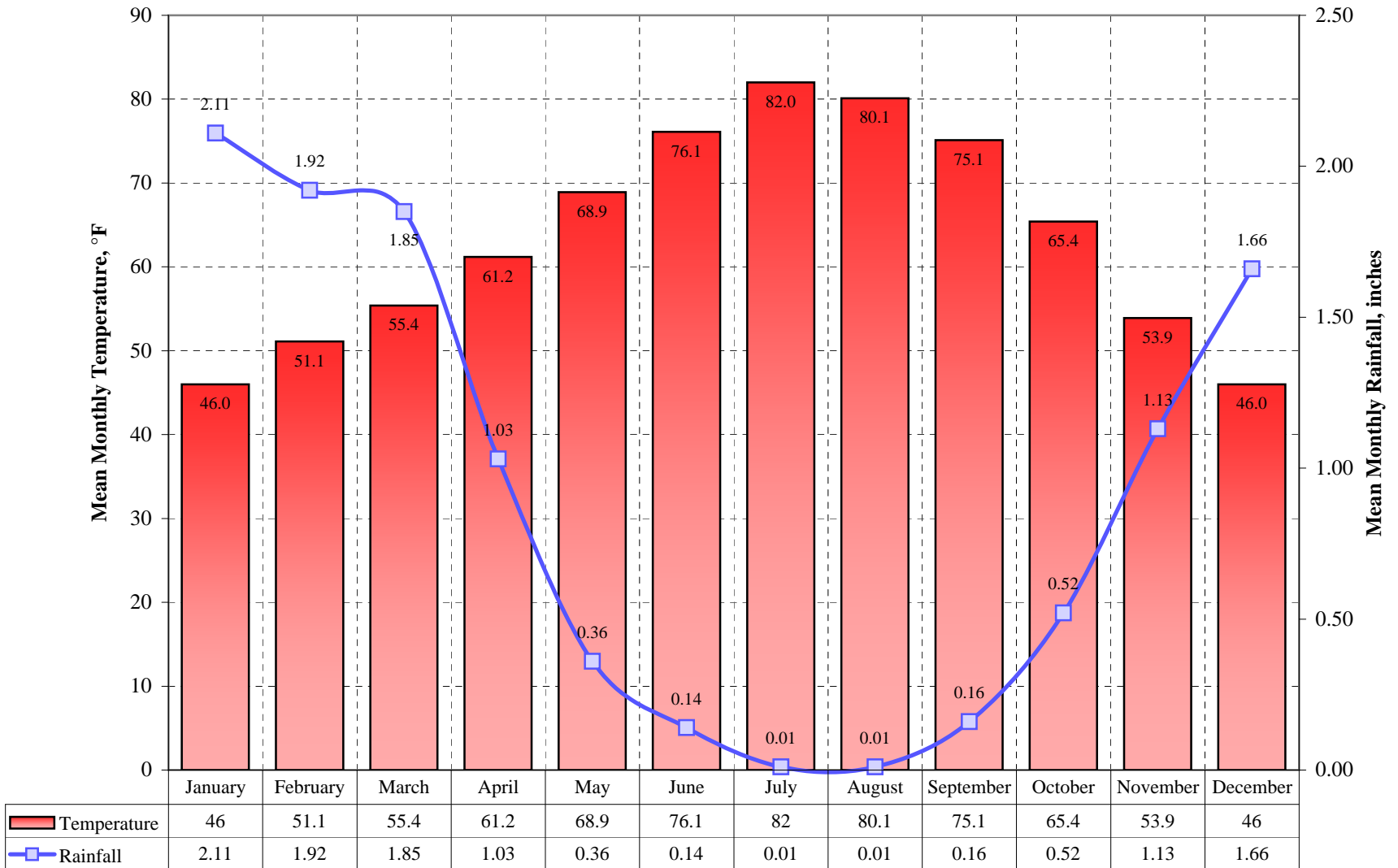
US Census 2000		Calculated Persons per CWS DU	Calculated Persons per US Census Housing Unit
Population	Housing Units		

20,370	6,050	3.793	3.367
--------	-------	-------	-------

# Selma District Housing Estimates



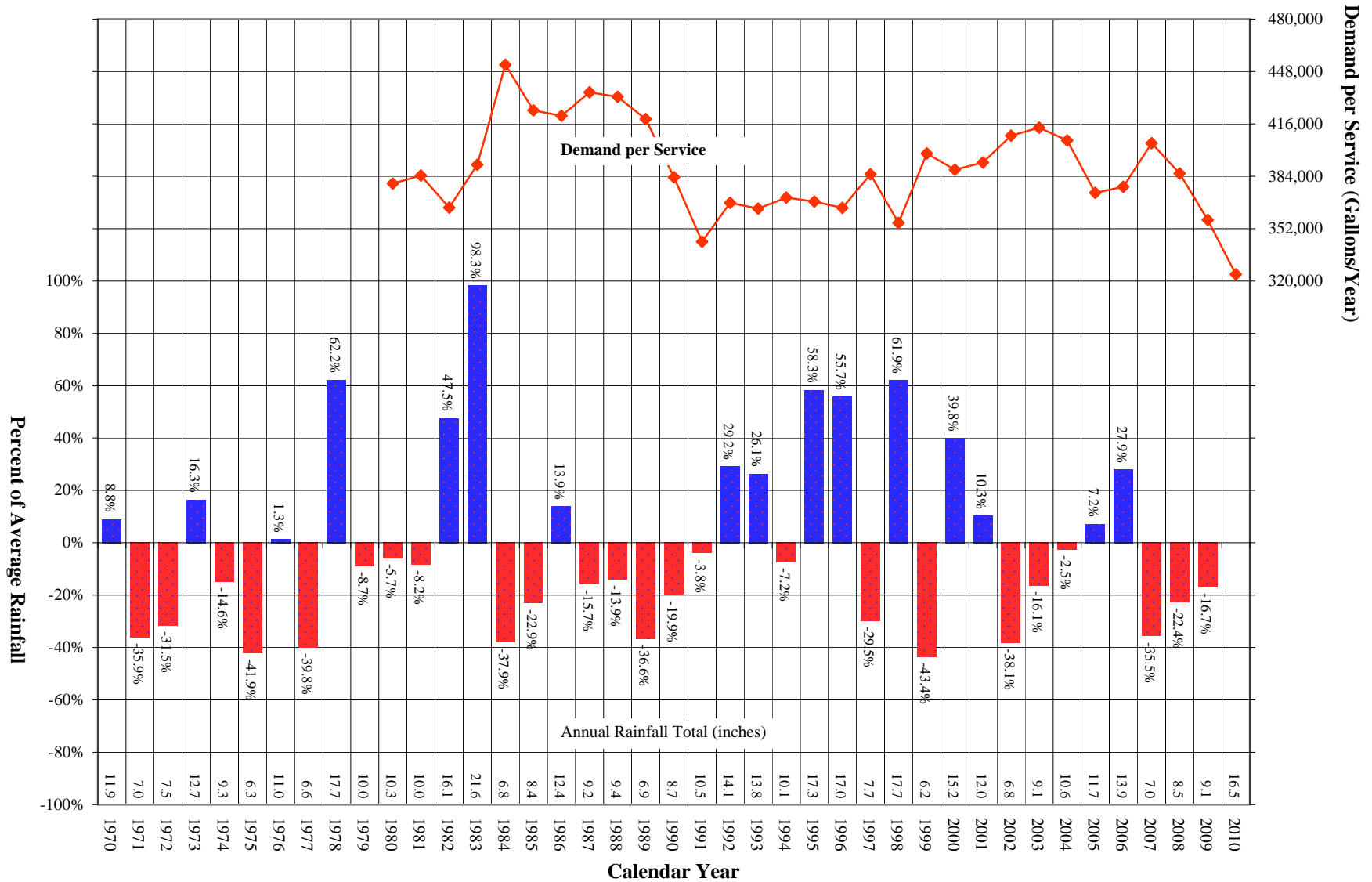
## Selma District Average Monthly Temperature and Rainfall



# Selma District

## Comparison of Annual Rainfall to Historical Average

Average Rain Fall District is 11.08 inches



## California Water Service Company - Selma

### Water Supply and Demand Analysis and Projections

#### Temperature & Rainfall History (Fahrenheit, Inches)

Year	Annual Average Temp.	Annual Average Rainfall	Rainfall Percent Variation	Demand per Service (Gal / Yr)	Percent of Average Demand
1970	63.5	11.86	8.8%		
1971	61.3	6.99	-35.9%		
1972	62.4	7.47	-31.5%		
1973	62.8	12.68	16.3%		
1974	63.5	9.31	-14.6%		
1975	60.5	6.33	-41.9%		
1976	61.3	11.04	1.3%		
1977	64.0	6.56	-39.8%		
1978	64.2	17.68	62.2%		
1979	64.8	9.95	-8.7%		
1980	64.1	10.28	-5.7%	379,457	97.7%
1981	65.0	10.01	-8.2%	384,354	99.0%
1982	61.6	16.08	47.5%	364,858	94.0%
1983	64.3	21.61	98.3%	391,012	100.7%
1984	65.3	6.77	-37.9%	452,102	116.4%
1985	63.8	8.40	-22.9%	424,268	109.3%
1986	66.0	12.41	13.9%	420,914	108.4%
1987	64.1	9.19	-15.7%	435,287	112.1%
1988	64.1	9.39	-13.9%	432,484	111.4%
1989	63.6	6.91	-36.6%	418,916	107.9%
1990	63.6	8.73	-19.9%	383,392	98.7%
1991	64.2	10.49	-3.8%	343,979	88.6%
1992	65.5	14.08	29.2%	367,686	94.7%
1993	64.1	13.75	26.1%	364,184	93.8%
1994	63.7	10.12	-7.2%	370,887	95.5%

Year	Annual Average Temp.	Annual Average Rainfall	Rainfall Percent Variation	Demand per Service (Gal / Yr)	Percent of Average Demand
1995	64.8	17.25	58.3%	368,573	94.9%
1996	65.1	16.97	55.7%	364,621	93.9%
1997	64.8	7.68	-29.5%	385,152	99.2%
1998	62.3	17.65	61.9%	355,510	91.6%
1999	63.3	6.17	-43.4%	397,845	102.5%
2000	64.2	15.24	39.8%	387,878	99.9%
2001	65.1	12.02	10.3%	392,390	101.1%
2002	64.5	6.75	-38.1%	408,724	105.3%
2003	65.4	9.14	-16.1%	413,655	106.5%
2004	64.7	10.63	-2.5%	405,834	104.5%
2005	65.1	11.68	7.2%	373,878	96.3%
2006	64.5	13.94	27.9%	377,479	97.2%
2007	64.6	7.03	-35.5%	404,146	104.1%
2008	65.1	8.46	-22.4%	385,680	99.3%
2009	65.0	9.08	-16.7%	357,394	92.0%
2010	64.1	16.51	51.5%	324,159	83.5%
2011					
2012					
2013					
2014					
2015					
2016					
2017					
2018					
2019					

Source: Western Regional Climate Center:

<http://www.wrcc.dri.edu/cgi-bin/cliMAIN.pl?ca3257>

Calendar Year	Average Water Year	Normal Water Year	Single-Dry Water Year	Multiple-Dry Water Years			
				1	2	3	4
	-	2004	1999	1988	1989	1990	1991
Demand per Service (gal/yr)	388,281	405,834	397,845	432,484	418,916	383,392	343,979
Difference from Average	100.0%	100.0%	98.0%	106.6%	103.2%	94.5%	84.8%

## California Water Service Company - Selma Water Supply and Demand Analysis and Projections

### Temperature Data

Station:(043257) FRESNO WSO AP															
From Year=1948 To Year=2010															
	Monthly Averages			Daily Extremes				Monthly Extremes				Max. Temp.		Min. Temp.	
	Max.	Min.	Mean	High	Date	Low	Date	Highest Mean	Year	Lowest Mean	Year	>= 90 F	<= 32 F	<= 32 F	<= 0 F
	F	F	F	F	dd/yyyy or yyyymmdd	F	dd/yyyy or yyyymmdd	F	-	F	-	# Days	# Days	# Days	# Days
January	54.5	37.6	46	78	28/1986	18	10/1949	53.6	1986	39.6	1949	0	0	7.7	0
February	61.5	40.7	51.1	80	26/1988	24	13/1949	56.4	1963	45.4	1956	0	0	2.9	0
March	67	43.8	55.4	90	17/1972	26	2/1953	62.5	2004	50.1	2006	0	0	0.7	0
April	74.5	47.9	61.2	100	30/1981	32	9/1953	67.2	1989	52.5	1967	1.8	0	0	0
May	83.5	54.3	68.9	107	28/1984	36	7/1965	77.3	2001	61.7	1953	8.7	0	0	0
June	91.7	60.5	76.1	110	16/1961	44	1/1955	82.8	1981	69	1952	18.7	0	0	0
July	98.3	65.7	82	113	23/2006	50	6/1955	87.8	2006	76.2	1955	28.8	0	0	0
August	96.3	63.9	80.1	112	13/1996	49	30/1966	84.2	1986	72.6	1976	27	0	0	0
September	90.6	59.5	75.1	111	3/1955	37	30/1950	81	1984	68.6	1965	17.8	0	0	0
October	79.7	51.1	65.4	102	4/1980	27	30/1972	70.5	1991	59.6	1969	4.1	0	0.1	0
November	65.3	42.4	53.9	90	5/2010	26	29/1975	58.7	1995	48.1	1994	0	0	1.7	0
December	54.7	37.3	46	77	8/2006	18	23/1990	51.2	1977	40	1963	0	0	7.5	0
Annual	76.5	50.4	63.4	113	20060723	18	19490110	66	1986	60.5	1975	106.8	0	20.6	0

	Jan	Feb	Mar	Apr	May	Jun	Jul	Aug	Sep	Oct	Nov	Dec	Total
Monthly Average ETo Report	1.24	1.96	3.41	5.10	6.82	7.80	8.06	7.13	5.40	3.72	1.80	0.93	53.37

Source: California Irrigation Management Information System (CIMIS), <http://www.cimis.water.ca.gov/cimis/welcome.jsp>, EvapoTranspiration (Eto) Zones Map, Zone 12

## California Water Service Company - Selma Water Supply and Demand Analysis and Projections

### Precipitation Data

Station:(043257) FRESNO WSO AP														
From Year=1948 To Year=2010														
	Precipitation										Total Snowfall			
	Mean	High	Year	Low	Year	1 Day Max.	>=	>=	>=	>=	Mean	High	Year	
	in.	in.	-	in.	-	in.	dd/yyyy or yyyymmdd	# Days	# Days	# Days	# Days	in.	in.	-
January	2.11	8.56	1969	0.04	1976	2.21	25/1969	8	5	1	0	0	2.2	1962
February	1.92	6.12	2000	0	1964	1.87	27/2000	8	5	1	0	0	0	1949
March	1.85	7.24	1991	0	1972	2.38	10/1995	7	5	1	0	0	0	1949
April	1.03	4.41	1967	0	1997	1.39	30/1983	4	2	1	0	0	0	1949
May	0.36	1.65	1990	0	1952	1.11	28/1990	2	1	0	0	0	0	1949
June	0.14	1.93	1998	0	1949	1.8	6/1998	1	0	0	0	0	0	1949
July	0.01	0.22	1992	0	1948	0.22	12/1992	0	0	0	0	0	0	1948
August	0.01	0.25	1964	0	1948	0.25	31/1964	0	0	0	0	0	0	1948
September	0.16	1.19	1976	0	1948	0.92	4/1978	1	0	0	0	0	0	1948
October	0.52	2.45	2000	0	1949	1.5	29/1996	2	1	0	0	0	0	1948
November	1.13	3.5	1972	0	1956	1.35	14/1953	5	3	1	0	0	0	1948
December	1.66	6.73	1955	0	1989	1.72	23/1955	7	4	1	0	0	1.2	1968
Annual	10.9	21.61	1983	6.07	1966	2.38	19950310	46	27	7	1	0.1	2.2	1962



**California Water Service Company - Selma District**  
**Water Supply and Demand Analysis and Projections**  
**Well Production for Selma District**

Unit No.	Status	Design Capacity (gpm)		
		Active	Inactive	
4-03	Active	750		
5-03	Inactive		500	
6-01	Active	750		
7-01	Active	550		
8-01	Active	550		
9-01	Inactive		500	
10-01	Active	550		
11-01	Active	1,000		
12-01	Inactive		1,200	
13-02	Active	1,000		
14-01	Active	600		
15-01	Inactive		1,000	
16-03	Active	1,000		
17-02	Active	1,000		
18-01	Active	950		
19-01	Active	1,300		
20-01	Active	1,200		
<b>Total Units</b>	<b>17</b>	<b>13</b>	<b>4</b>	<b>units</b>

Design Capacity	14,400	11,200	3,200	gpm
	20.7	16.1	4.6	MGD
	23,227	18,066	5,162	AFY

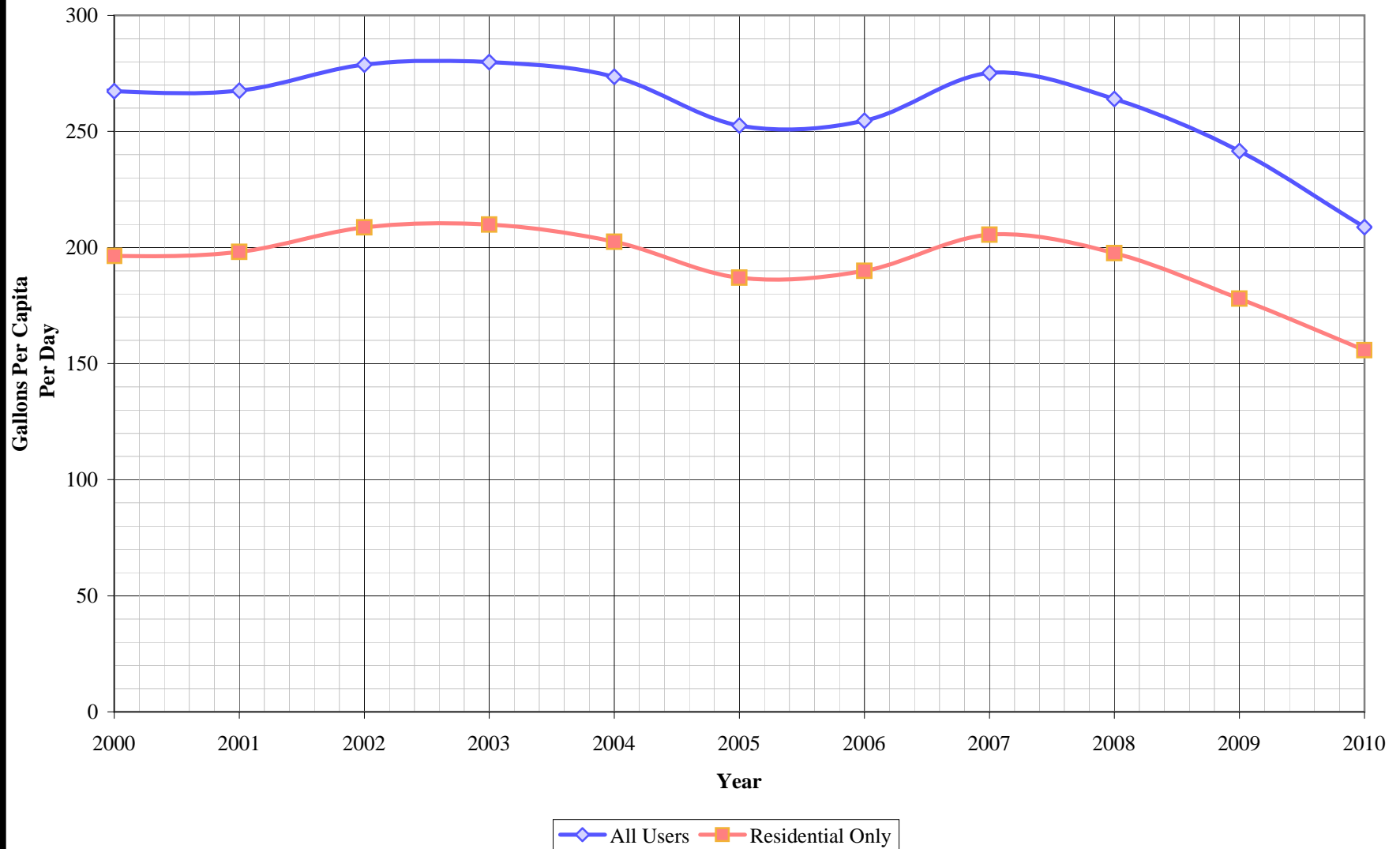
## Notes:

1) Listed pump capacities on this worksheet represent design flowrates, actual flowrates are highly dependent on local system pressures, well characteristics, and other design criteria

2) Values in bold are estimated

Updated 1/1/2011

# Selma District Per Capita Consumption



**California Water Service Company - Selma District**  
**Water Supply and Demand Analysis and Projections**

**Per Capita Water Demand**

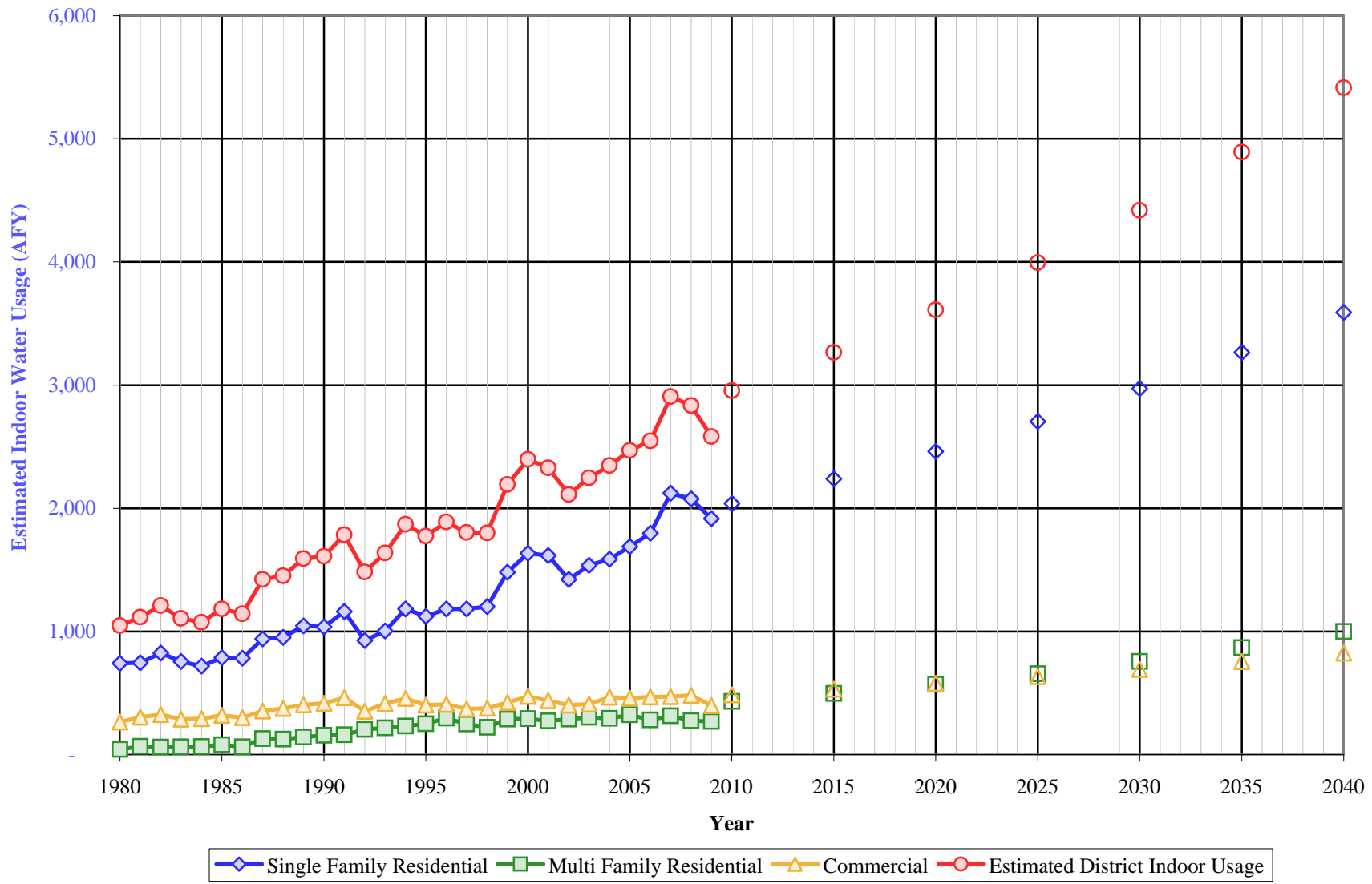
Year	All Users			Residential Only		
	Usage (AFY)	Usage (MGY)	Gallons Per Capita Per Day	Usage (AFY)	Usage (MGY)	Gallons Per Capita Per Day
1995	5,252	1,711	250.1	3,890	1,268	185.2
1996	5,297	1,726	247.3	3,855	1,256	180.0
1997	5,723	1,865	263.0	4,176	1,361	191.9
1998	5,397	1,759	242.9	3,960	1,291	178.2
1999	6,128	1,997	272.4	4,489	1,463	199.6
2000	6,099	1,987	267.3	4,482	1,460	196.4
2001	6,228	2,029	267.6	4,611	1,503	198.1
2002	6,652	2,167	278.8	4,978	1,622	208.6
2003	6,912	2,252	279.9	5,183	1,689	209.8
2004	7,032	2,291	273.5	5,206	1,696	202.5
2005	6,648	2,166	252.6	4,924	1,604	187.1
2006	6,893	2,246	254.6	5,142	1,675	189.9
2007	7,391	2,408	275.1	5,520	1,799	205.5
2008	7,100	2,314	264.0	5,313	1,731	197.5
2009	6,563	2,139	241.5	4,837	1,576	178.0
2010	6,000	1,955	208.8	4,476	1,459	155.8
5 Yr. Avg.	6,789	2,212	248.8	5,058	1,648	185.3
10 Yr. Avg.	6,742	2,197	259.6	5,019	1,635	193.3

Five year average is from years 2006 through 2010.

Ten year average is from years 2001 through 2010.

# Selma District

## Estimated Indoor Water Usage



**California Water Service Company - Selma District**  
**Water Supply and Demand Analysis and Projections**

**Estimated Indoor/Outdoor Water Usage**

Year	Single Family Residential (SFR)							Multi Family Residential (MFR)				Commercial (COM)				Est. Indoor Usage AFY
	Metered Single Family Residential Indoor Use			Indoor Flat Rate Usage (AFY)	Total SFR Indoor Usage			Multi Family Residential (CCF)	Multi Family Residential Indoor Use (Annualized 90% of January Total)			Commercial (CCF)	Commercial Indoor Use (Annualized 90% of January Total)			
	JAN (CCF)	AFY	AFY/Service		AFY	GPD/Service	%		AFY	GPD/Service	%		AFY	GPD/Service	%	
1980	6,100	151	0.26	590	741	291	27%	1,699	42	59%	10,653	264	851	56%	1,047	
1981	6,128	152	0.25	594	746	287	26%	2,665	66	83%	12,274	304	960	62%	1,117	
1982	6,844	170	0.28	654	824	308	30%	2,435	60	65%	13,121	325	995	74%	1,210	
1983	6,457	160	0.25	596	756	277	25%	2,489	62	61%	11,622	288	852	63%	1,106	
1984	6,278	156	0.24	563	719	258	21%	2,588	64	57%	11,771	292	843	55%	1,075	
1985	6,675	165	0.25	621	787	277	23%	3,187	79	71%	12,837	318	923	61%	1,184	
1986	6,789	168	0.24	614	783	268	22%	2,484	62	4,582	12,065	299	842	53%	1,143	
1987	8,154	202	0.28	737	939	310	26%	5,216	129	8,247	14,317	355	981	60%	1,423	
1988	8,198	203	0.28	749	952	308	26%	5,028	125	7,949	15,122	375	1,020	58%	1,452	
1989	8,963	222	0.30	823	1,045	329	29%	5,685	141	8,988	16,288	404	1,079	64%	1,590	
1990	8,862	220	0.30	817	1,036	319	32%	6,303	156	9,965	16,793	416	1,093	65%	1,609	
1991	9,934	246	0.32	916	1,162	354	40%	6,465	160	10,221	18,629	462	1,227	78%	1,784	
1992	8,988	223	0.25	703	926	278	28%	8,258	205	12,186	14,229	353	916	57%	1,483	
1993	11,182	277	0.26	727	1,005	299	30%	8,729	216	12,881	16,739	415	1,050	61%	1,636	
1994	14,005	347	0.29	835	1,182	351	34%	9,319	231	13,751	18,429	457	1,136	66%	1,870	
1995	13,991	347	0.27	776	1,123	318	32%	10,072	250	13,933	16,182	401	992	60%	1,774	
1996	15,466	383	0.28	800	1,184	318	34%	11,967	297	14,716	16,453	408	971	62%	1,888	
1997	16,275	404	0.28	780	1,183	314	31%	10,014	248	10,555	14,967	371	860	56%	1,803	
1998	17,369	431	0.27	770	1,201	314	33%	8,901	221	8,955	15,223	377	851	62%	1,799	
1999	21,977	545	0.33	937	1,481	383	36%	11,631	288	9,902	17,040	422	938	59%	2,192	
2000	25,095	622	0.36	1,012	1,634	417	40%	11,720	291	9,608	19,035	472	1,064	64%	2,397	
2001	25,273	627	0.36	990	1,616	403	38%	11,032	274	7,400	17,681	438	998	60%	2,328	
2002	22,979	570	0.30	852	1,422	337	31%	11,601	288	7,133	16,226	402	900	55%	2,112	
2003	26,252	651	0.32	885	1,536	349	32%	12,162	302	7,478	16,511	409	898	55%	2,247	
2004	28,648	710	0.32	876	1,586	353	33%	11,877	294	7,302	18,777	466	1,004	59%	2,346	
2005	31,533	782	0.33	907	1,689	368	37%	13,003	322	7,779	18,478	458	965	60%	2,469	
2006	34,887	865	0.34	932	1,797	384	38%	11,303	280	6,762	18,922	469	976	61%	2,546	
2007	41,895	1,039	0.40	1,083	2,121	443	41%	12,697	315	7,396	19,012	471	970	59%	2,908	
2008	41,443	1,028	0.39	1,050	2,077	424	42%	11,102	275	6,301	19,429	482	989	63%	2,834	
2009	38,690	959	0.36	956	1,916	386	43%	10,873	270	6,171	16,017	397	793	55%	2,582	
2010	---	---	---	---	2,038	334	32%	---	431	7,333	---	486	965	84%	2,955	
2015	---	---	---	---	2,240	334	32%	---	496	7,333	---	531	965	84%	3,266	
2020	---	---	---	---	2,461	334	32%	---	570	7,333	---	580	965	84%	3,612	
2025	---	---	---	---	2,705	334	32%	---	656	7,333	---	633	965	84%	3,994	
2030	---	---	---	---	2,972	334	32%	---	755	7,333	---	692	965	84%	4,419	
2035	---	---	---	---	3,267	334	32%	---	869	7,333	---	756	965	84%	4,891	
2040	---	---	---	---	3,590	334	32%	---	1,000	7,333	---	825	965	84%	5,415	

**California Water Service Company - Selma District**

**Water Supply and Demand Analysis and Projections**

**Comparison of Projected Demand and Conservation Savings Between SBx7-7 Compliance Targets and Actual Proposed Programs**

Year	SBx7-7 Compliance Target (gpcd)	Anticipated GPCD with Proposed Programs*	Estimated Population	SBx7-7 Compliance Target Demand (AFY)	Undadjusted Baseline Demand (AFY)	Anticipated Demand with Proposed Programs (AFY)	Compliance Target Savings Requirement (AFY)	Savings Due to Proposed Programs (AFY)
2005-2009 Average	258	258	23,984	6,919	6,919	6,919	0	0
2010	258	258	25,650	7,400	7,400	7,400	0	0
2011	254	257	26,180	7,456	7,553	7,537	97	16
2012	251	254	26,730	7,513	7,711	7,605	198	106
2013	248	250	27,280	7,567	7,870	7,639	303	231
2014	244	247	27,850	7,621	8,034	7,705	413	329
2015	241	241	28,430	7,675	8,202	7,675	527	527
2016	236	236	29,020	7,665	8,372	7,665	707	707
2017	231	231	29,620	7,651	8,545	7,651	894	894
2018	225	225	30,240	7,635	8,724	7,635	1,089	1,089
2019	220	220	30,870	7,614	8,906	7,614	1,291	1,291
2020	215	215	31,510	7,589	9,090	7,589	1,502	1,502
2021	215	215	32,170	7,748	9,281	7,748	1,533	1,533
2022	215	215	32,840	7,909	9,474	7,909	1,565	1,565
2023	215	215	33,530	8,075	9,673	8,075	1,598	1,598
2024	215	215	34,230	8,244	9,875	8,244	1,631	1,631
2025	215	215	34,940	8,415	10,080	8,415	1,665	1,665
2026	215	215	35,670	8,590	10,290	8,590	1,700	1,700
2027	215	215	36,420	8,771	10,507	8,771	1,736	1,736
2028	215	215	37,180	8,954	10,726	8,954	1,772	1,772
2029	215	215	37,960	9,142	10,951	9,142	1,809	1,809
2030	215	215	38,760	9,335	11,182	9,335	1,847	1,847
2031	215	215	39,570	9,530	11,415	9,530	1,886	1,886
2032	215	215	40,400	9,730	11,655	9,730	1,925	1,925
2033	215	215	41,250	9,934	11,900	9,934	1,966	1,966
2034	215	215	42,120	10,144	12,151	10,144	2,007	2,007
2035	215	215	43,000	10,356	12,405	10,356	2,049	2,049
2036	215	215	43,910	10,575	12,667	10,575	2,093	2,093
2037	215	215	44,830	10,796	12,933	10,796	2,136	2,136
2038	215	215	45,780	11,025	13,207	11,025	2,182	2,182
2039	215	215	46,740	11,256	13,484	11,256	2,227	2,227
2040	215	215	47,730	11,495	13,769	11,495	2,275	2,275

\*Note: The district is projected to achieve its district-specific 2015 SBx7-7 compliance target through a combination of passive and active savings. For the purpose of this analysis it is assumed that there will be a linear reduction in GPCD from 2015-2020 to achieve the district-specific 2020 SBx7-7 compliance target. GPCD will remain flat from 2020 through 2040.