

Water Resources Planning Department

Water Supply / Demand Analysis and Projections
for
Marysville District

2010

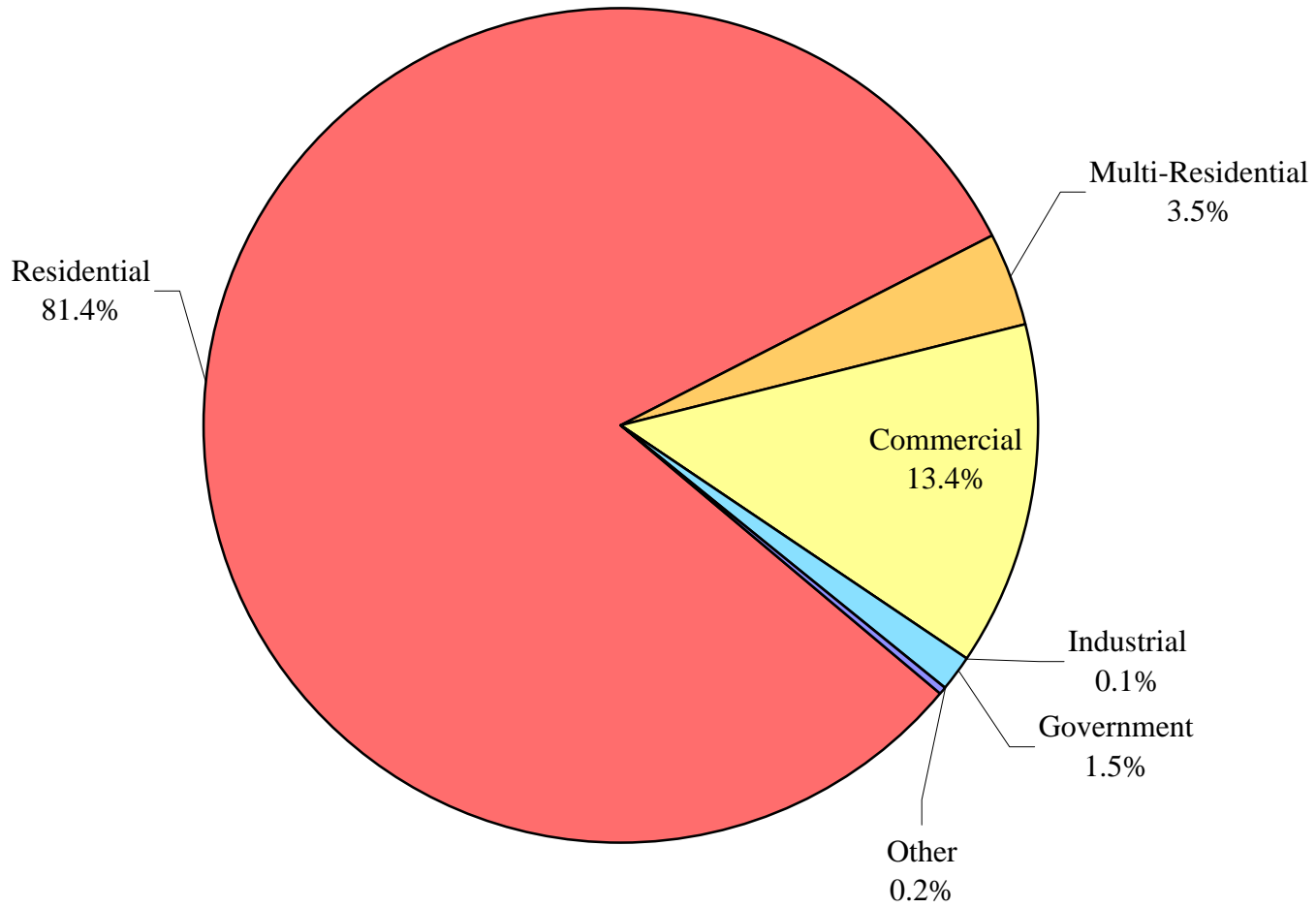


Table of Contents for Worksheets

Worksheet	Title
1	Annual Services
2	Service Growth Percentage
3	District Sales (ccf)
4	District Sales (AF)
5	Demand per Service (Gallons/Service/Year)
6	Demand per Service (Gallons per Day)
7	Percentage Change in Annual Demand
8	Percentage of Total Sales
9	Percentage of Total Demand
10	Demand Scenario 1 (Low Demand Projection)
11	Demand Scenario 2 (Average Demand Projection)
12	Demand Scenario 3 (High Demand Projection)
13	Demand Scenario 4 (Alternate Service Projection)
14	not used
15	Actual & Projected Annual Average Services
16	Actual & Projected Demand in Acre-Feet
17	Projected Annual Supply by Source
18	Historical and Projected Average Day, Maximum Day, and Peak Demands
19	Population as of the 2000 Average Annual Services
20	Temperature & Rainfall History
21	Groundwater Facilities (if available)
22	Per Capita Water Demand Calculation
23	Indoor/Outdoor Water Usage
24	SB-7 Compliance Demand Worksheet

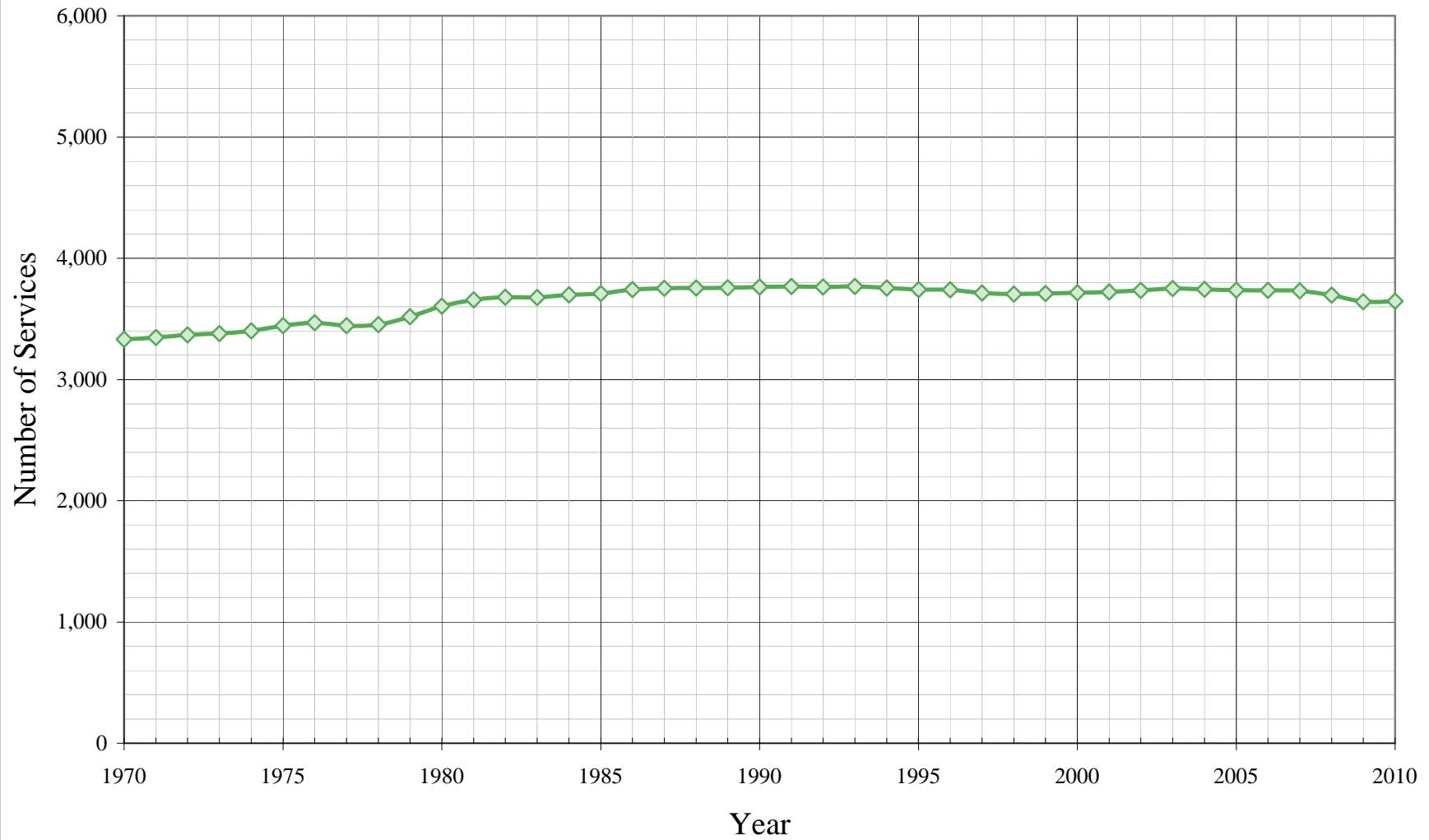
Marysville District

Distribution of Services (2010)



Marysville District

Historical Services



California Water Service Company - Marysville District

Water Supply and Demand Analysis and Projections

Annual Services

Year	Total S.F. Residential	Metered Residential	Flat Rate Residential	Multi- Residential	Multi-Res. units	Commercial	Industrial	Government	Other	Total
1970	2,641	257	2,384	0	0	641	3	46	1	3,332
1971	2,651	253	2398	0	0	642	3	49	1	3,346
1972	2,652	245	2407	0	0	660	3	51	2	3,368
1973	2,656	239	2417	0	0	668	3	51	1	3,379
1974	2,679	241	2438	35	595	631	3	51	1	3,400
1975	2,723	238	2485	35	616	629	3	51	2	3,443
1976	2,752	231	2521	36	639	625	3	49	3	3,468
1977	2,740	236	2504	39	725	611	3	48	2	3,443
1978	2,739	239	2500	44	779	613	3	50	3	3,452
1979	2,793	233	2560	46	797	622	3	54	1	3,519
1980	2,873	237	2636	47	864	623	3	57	1	3,604
1981	2,920	234	2686	48	897	627	3	56	2	3,656
1982	2,930	227	2703	49	951	639	3	57	1	3,679
1983	2,934	239	2695	50	981	633	3	56	1	3,677
1984	2,953	252	2701	50	979	633	3	58	1	3,698
1985	2,971	251	2720	51	1,011	624	4	59	1	3,710
1986	2,991	258	2733	58	1,194	630	4	58	1	3,742
1987	2,994	272	2722	59	1,224	638	4	57	0	3,752
1988	2,994	286	2708	62	1,276	638	4	56	0	3,754
1989	2,995	290	2705	65	1,472	636	4	57	0	3,757
1990	2,999	300	2699	65	1,691	637	4	58	0	3,763
1991	3,001	308	2693	65	1,427	640	4	57	1	3,768
1992	2,996	313	2683	65	1,335	635	4	62	1	3,763
1993	3,001	323	2678	65	1,350	632	4	63	2	3,767
1994	2,988	324	2664	65	1,342	633	4	64	1	3,755
1995	2,982	330	2652	65	1,348	625	3	64	2	3,741
1996	2,983	340	2643	65	1,347	620	3	66	2	3,739
1997	2,964	341	2623	65	1,351	613	3	67	2	3,714
1998	2,960	342	2618	66	1,354	607	3	67	2	3,705
1999	2,962	350	2612	67	1,363	607	3	68	2	3,709
2000	2,961	352	2609	67	1,363	613	4	67	3	3,715
2001	2,968	357	2611	67	1,351	607	4	72	3	3,721
2002	2,981	362	2619	67	1,359	609	4	72	3	3,736
2003	3,010	398	2612	125	1,608	536	4	73	2	3,750
2004	3,014	423	2591	127	1,611	526	4	71	2	3,744
2005	3,008	439	2569	126	1,612	528	3	70	2	3,737
2006	3,003	455	2548	126	1,610	529	3	71	3	3,735
2007	2,997	478	2519	125	1,610	530	4	69	5	3,730
2008	2,966	525	2441	126	1,612	523	4	71	5	3,695
2009	2,935	662	2273	124	1,608	506	4	65	7	3,641
2010	2,967	954	2013	128	0	488	2	53	7	3,645
5 Yr Avg.	2,982	512	2,470	125	1,610	523	4	69	4	3,708
10 Yr Avg.	2,984	445	2,539	108	1,534	551	4	70	4	3,720
20 Yr Avg.	2,984	386	2,598	87	1,463	588	4	67	3	3,731

Five year average = 2005 through 2009.

Ten year average = 2000 through 2009.

Twenty year average = 1990 through 2009.

California Water Service Company - Marysville District
Water Supply and Demand Analysis and Projections
Service Growth Percentage

Worksheet 2

Year	Total S.F. Residential	Metered Residential	Flat Rate Residential	Multi- Residential	Multi-Res. units	Commercial	Industrial	Government	Other	Total
1981	1.64%	-1.27%	1.90%	2.13%	3.82%	0.64%	0.00%	-1.75%	100.00%	1.44%
1982	0.34%	-2.99%	0.63%	2.08%	6.02%	1.91%	0.00%	1.79%	-50.00%	0.63%
1983	0.14%	5.29%	-0.30%	2.04%	3.15%	-0.94%	0.00%	-1.75%	0.00%	-0.05%
1984	0.65%	5.44%	0.22%	0.00%	-0.20%	0.00%	0.00%	3.57%	0.00%	0.57%
1985	0.61%	-0.40%	0.70%	2.00%	3.27%	-1.42%	33.33%	1.72%	0.00%	0.32%
1986	0.67%	2.79%	0.48%	13.73%	18.10%	0.96%	0.00%	-1.69%	0.00%	0.86%
1987	0.10%	5.43%	-0.40%	1.72%	2.51%	1.27%	0.00%	-1.72%	-100.00%	0.27%
1988	0.00%	5.15%	-0.51%	5.08%	4.25%	0.00%	0.00%	-1.75%	0.00%	0.05%
1989	0.03%	1.40%	-0.11%	4.84%	15.36%	-0.31%	0.00%	1.79%	0.00%	0.08%
1990	0.13%	3.45%	-0.22%	0.00%	14.88%	0.16%	0.00%	1.75%	0.00%	0.16%
1991	0.07%	2.67%	-0.22%	0.00%	-15.61%	0.47%	0.00%	-1.72%	0.00%	0.13%
1992	-0.17%	1.62%	-0.37%	0.00%	-6.45%	-0.78%	0.00%	8.77%	0.00%	-0.13%
1993	0.17%	3.19%	-0.19%	0.00%	1.12%	-0.47%	0.00%	1.61%	100.00%	0.11%
1994	-0.43%	0.31%	-0.52%	0.00%	-0.59%	0.16%	0.00%	1.59%	-50.00%	-0.32%
1995	-0.20%	1.85%	-0.45%	0.00%	0.45%	-1.26%	-25.00%	0.00%	100.00%	-0.37%
1996	0.03%	3.03%	-0.34%	0.00%	-0.07%	-0.80%	0.00%	3.13%	0.00%	-0.05%
1997	-0.64%	0.29%	-0.76%	0.00%	0.30%	-1.13%	0.00%	1.52%	0.00%	-0.67%
1998	-0.13%	0.29%	-0.19%	1.54%	0.22%	-0.98%	0.00%	0.00%	0.00%	-0.24%
1999	0.07%	2.34%	-0.23%	1.52%	0.66%	0.00%	0.00%	1.49%	0.00%	0.11%
2000	-0.03%	0.57%	-0.11%	0.00%	0.00%	0.99%	33.33%	-1.47%	50.00%	0.16%
2001	0.24%	1.42%	0.08%	0.00%	-0.88%	-0.98%	0.00%	7.46%	0.00%	0.16%
2002	0.44%	1.40%	0.31%	0.00%	0.59%	0.33%	0.00%	0.00%	0.00%	0.40%
2003	0.97%	9.94%	-0.27%	86.57%	107.06%	-11.99%	0.00%	1.39%	-33.33%	0.37%
2004	0.13%	6.28%	-0.80%	1.60%	14.50%	-1.87%	0.00%	-2.74%	0.00%	-0.16%
2005	-0.20%	3.78%	-0.85%	-0.79%	0.03%	0.38%	-25.00%	-1.41%	0.00%	-0.19%
2006	-0.17%	3.64%	-0.82%	0.00%	-0.09%	0.19%	0.00%	1.43%	50.00%	-0.05%
2007	-0.20%	5.05%	-1.14%	-0.79%	0.00%	0.19%	33.33%	-2.82%	66.67%	-0.13%
2008	-1.03%	9.83%	-3.10%	0.80%	0.09%	-1.32%	0.00%	2.90%	0.00%	-0.94%
2009	-1.05%	26.10%	-6.88%	-1.59%	-50.11%	-3.25%	0.00%	-8.45%	40.00%	-1.46%
2010	1.09%	44.11%	-11.44%	3.23%	-100.00%	-3.56%	-50.00%	-18.46%	0.00%	0.11%
5 Yr. Avg.	-0.53%	9.68%	-2.56%	-0.47%	-10.02%	-0.76%	1.67%	-1.67%	23.33%	-0.29%
10 Yr. Avg.	-0.21%	6.45%	-1.48%	-0.09%	-3.99%	-0.59%	4.63%	-0.57%	22.96%	-0.25%
Historical	0.08%	3.72%	-0.50%	4.22%	4.22%	-0.68%	1.72%	0.50%	9.43%	0.04%

Five Year Average includes 2005-2009.

Ten Year Average includes 2000 to 2002 and 2004 to 2009

2003 & 2004 Growth rates were excluded from averaging due to extreme values resulting from reclassification of service accounts.

California Water Service Company - Marysville District
Water Supply and Demand Analysis and Projections
Sales (ccf)

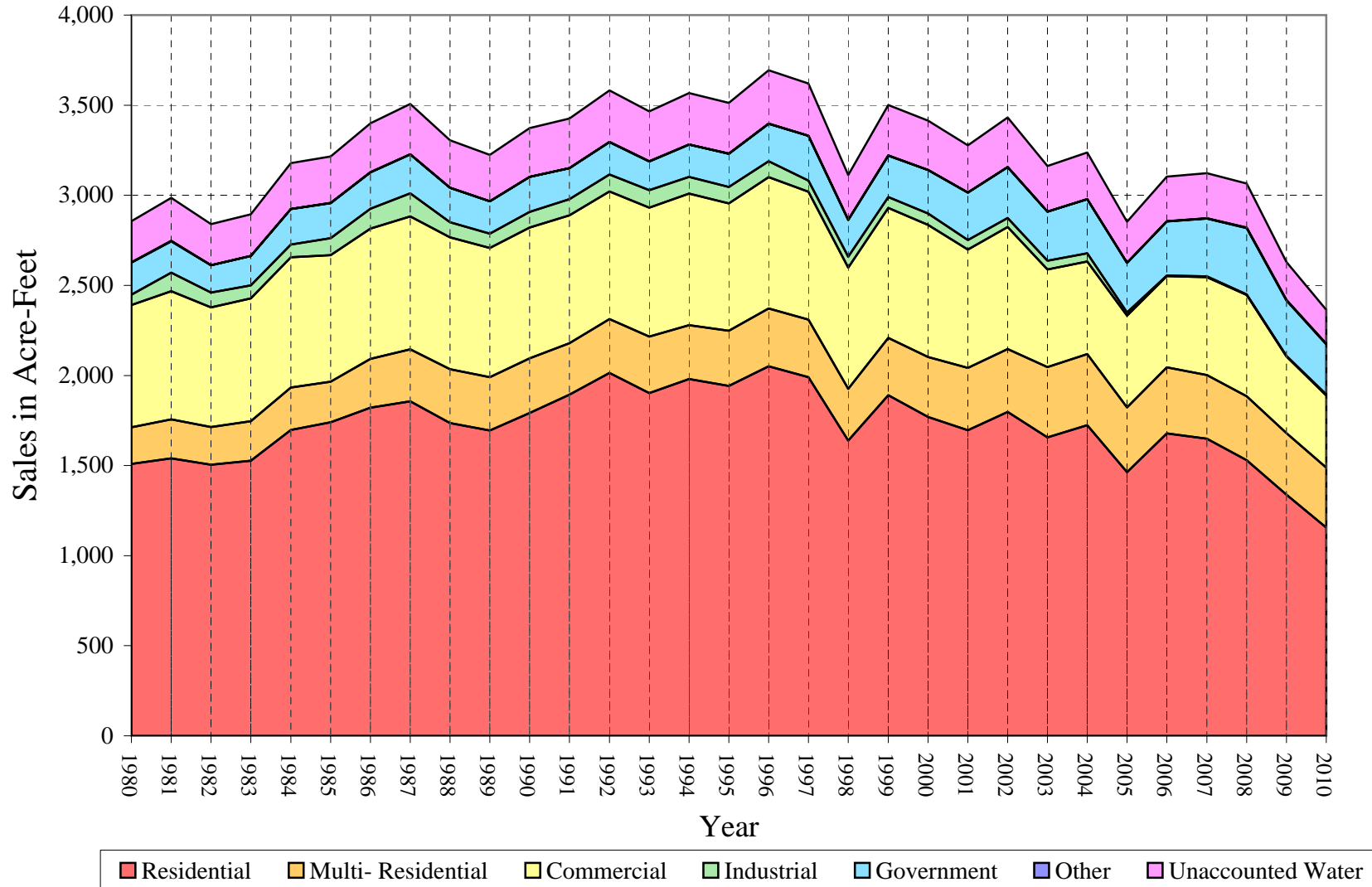
Worksheet 3

Year	Total Residential	Metered Residential	Flat Rate Residential	Multi-Residential	Commercial	Industrial	Government	Other	Unaccounted Water	Total(ccf) Sales	Total(ccf) Production	Total(kgal) Production
1980	657,573	38,359	619,214	87,983	295,999	24,661	78,082	276	99,528	1,144,574	1,244,102	930,653
1981	670,490	38,639	631,851	94,271	310,156	44,544	75,751	1,241	104,039	1,196,453	1,300,492	972,836
1982	655,706	36,497	619,209	90,727	288,981	36,107	66,116	301	98,951	1,137,938	1,236,889	925,257
1983	665,285	38,368	626,917	95,170	297,323	30,943	71,242	100	100,875	1,160,063	1,260,938	943,247
1984	739,257	50,346	688,911	102,638	314,749	30,821	86,273	139	110,772	1,273,877	1,384,648	1,035,789
1985	757,695	46,901	710,794	98,597	305,854	41,073	84,421	925	112,049	1,288,565	1,400,614	1,047,732
1986	793,217	49,596	743,621	118,151	314,995	48,201	87,858	119	118,482	1,362,541	1,481,023	1,107,882
1987	808,778	52,836	755,942	125,519	321,247	55,956	94,007	0	122,218	1,405,507	1,527,725	1,142,818
1988	756,022	55,909	700,113	130,377	318,322	36,820	83,137	0	115,189	1,324,678	1,439,868	1,077,096
1989	737,842	53,285	684,557	128,877	312,838	34,547	78,107	0	112,366	1,292,211	1,404,577	1,050,697
1990	780,437	53,874	726,563	131,916	316,196	37,696	85,278	0	117,524	1,351,523	1,469,046	1,098,923
1991	824,718	51,124	773,594	124,152	309,442	39,076	75,083	158	119,359	1,372,629	1,491,989	1,116,085
1992	877,422	52,963	824,459	129,878	308,611	41,059	78,141	448	124,831	1,435,559	1,560,390	1,167,253
1993	828,718	54,391	774,327	136,181	311,615	42,811	69,125	405	120,770	1,388,855	1,509,625	1,129,278
1994	862,802	60,592	802,210	130,108	318,176	40,348	77,922	142	124,304	1,429,498	1,553,802	1,162,325
1995	846,055	58,282	787,773	132,914	308,118	39,900	80,186	535	122,409	1,407,708	1,530,117	1,144,607
1996	893,103	64,761	828,342	139,742	317,878	38,495	89,948	989	128,709	1,480,155	1,608,864	1,203,514
1997	867,007	69,886	797,121	139,409	309,051	26,697	108,213	281	126,144	1,450,658	1,576,802	1,179,530
1998	713,634	59,517	654,117	125,452	292,545	26,648	88,824	211	108,462	1,247,314	1,355,776	1,014,191
1999	823,379	68,890	754,489	138,852	313,666	26,561	100,155	345	121,996	1,402,958	1,524,954	1,140,745
2000	770,832	68,469	702,363	144,940	319,542	27,638	104,831	397	118,972	1,368,180	1,487,152	1,112,467
2001	739,016	67,610	671,406	150,566	286,206	22,632	114,689	213	114,202	1,313,322	1,427,524	1,067,862
2002	782,946	71,321	711,625	151,777	295,012	22,019	123,053	405	119,584	1,375,212	1,494,796	1,118,185
2003	721,477	79,092	642,385	169,882	235,829	21,140	118,964	102	110,208	1,267,394	1,377,602	1,030,518
2004	751,123	93,348	657,775	171,925	223,719	19,568	131,005	128	112,823	1,297,468	1,410,291	1,054,971
2005	637,242	84,667	552,575	156,849	221,667	7,662	119,789	26	99,412	1,143,235	1,242,646	929,564
2006	730,875	88,613	642,262	159,717	220,959	1,298	130,937	40	108,159	1,243,826	1,351,985	1,011,355
2007	718,036	91,464	626,572	154,120	236,544	2,270	139,536	854	108,814	1,251,360	1,360,174	1,017,481
2008	666,529	97,302	569,227	154,555	244,683	1,494	160,409	827	106,826	1,228,497	1,335,323	998,891
2009	582,888	108,345	474,543	149,035	185,279	1,065	134,352	1,313	91,646	1,053,932	1,145,578	856,952
2010	503,235	145,366	357,869	145,280	174,498	2,289	121,248	1,047	82,400	947,597	1,029,997	770,491
5 Yr. Avg.	667,114	94,078	573,036	154,855	221,826	2,758	137,005	612	102,971	1,184,170	1,287,141	962,849
10 Yr. Avg.	710,096	85,023	625,073	156,337	246,944	12,679	127,757	431	109,065	1,254,243	1,363,307	1,019,825

Five Year Average is from 2005 through 2009.

Ten Year Average is from 2000 through 2009.

Marysville District Historical Sales



California Water Service Company - Marysville District

Water Supply and Demand Analysis and Projections

Worksheet 4

Sales (AF)

Year	Metered		Flat Rate	Multi-					Unaccounted	Total(AF)	Total(AF)	Total(Mgal)
	Residential	Residential	Residential	Residential	Commercial	Industrial	Government	Other	Water	Sales	Production	Production
1980	1,510	88	1,422	202	680	57	179	1	228	2,628	2,856	931
1981	1,539	89	1,451	216	712	102	174	3	239	2,747	2,986	973
1982	1,505	84	1,422	208	663	83	152	1	227	2,612	2,840	925
1983	1,527	88	1,439	218	683	71	164	0	232	2,663	2,895	943
1984	1,697	116	1,582	236	723	71	198	0	254	2,924	3,179	1,036
1985	1,739	108	1,632	226	702	94	194	2	257	2,958	3,215	1,048
1986	1,821	114	1,707	271	723	111	202	0	272	3,128	3,400	1,108
1987	1,857	121	1,735	288	737	128	216	0	281	3,227	3,507	1,143
1988	1,736	128	1,607	299	731	85	191	0	264	3,041	3,305	1,077
1989	1,694	122	1,572	296	718	79	179	0	258	2,967	3,224	1,051
1990	1,792	124	1,668	303	726	87	196	0	270	3,103	3,372	1,099
1991	1,893	117	1,776	285	710	90	172	0	274	3,151	3,425	1,116
1992	2,014	122	1,893	298	708	94	179	1	287	3,296	3,582	1,167
1993	1,902	125	1,778	313	715	98	159	1	277	3,188	3,466	1,129
1994	1,981	139	1,842	299	730	93	179	0	285	3,282	3,567	1,162
1995	1,942	134	1,808	305	707	92	184	1	281	3,232	3,513	1,145
1996	2,050	149	1,902	321	730	88	206	2	295	3,398	3,693	1,204
1997	1,990	160	1,830	320	709	61	248	1	290	3,330	3,620	1,180
1998	1,638	137	1,502	288	672	61	204	0	249	2,863	3,112	1,014
1999	1,890	158	1,732	319	720	61	230	1	280	3,221	3,501	1,141
2000	1,770	157	1,612	333	734	63	241	1	273	3,141	3,414	1,112
2001	1,697	155	1,541	346	657	52	263	0	262	3,015	3,277	1,068
2002	1,797	164	1,634	348	677	51	282	1	275	3,157	3,432	1,118
2003	1,656	182	1,475	390	541	49	273	0	253	2,910	3,163	1,031
2004	1,724	214	1,510	395	514	45	301	0	259	2,979	3,238	1,055
2005	1,463	194	1,269	360	509	18	275	0	228	2,625	2,853	930
2006	1,678	203	1,474	367	507	3	301	0	248	2,855	3,104	1,011
2007	1,648	210	1,438	354	543	5	320	2	250	2,873	3,123	1,017
2008	1,530	223	1,307	355	562	3	368	2	245	2,820	3,065	999
2009	1,338	249	1,089	342	425	2	308	3	210	2,419	2,630	857
2010	1,155	334	822	334	401	5	278	2	189	2,175	2,365	770
5 Yr. Avg.	1,564	216	1,348	362	510	13	312	1	240	2,762	3,002	978
10 Yr. Avg.	1,654	192	1,462	355	581	32	288	1	253	2,910	3,163	1,031

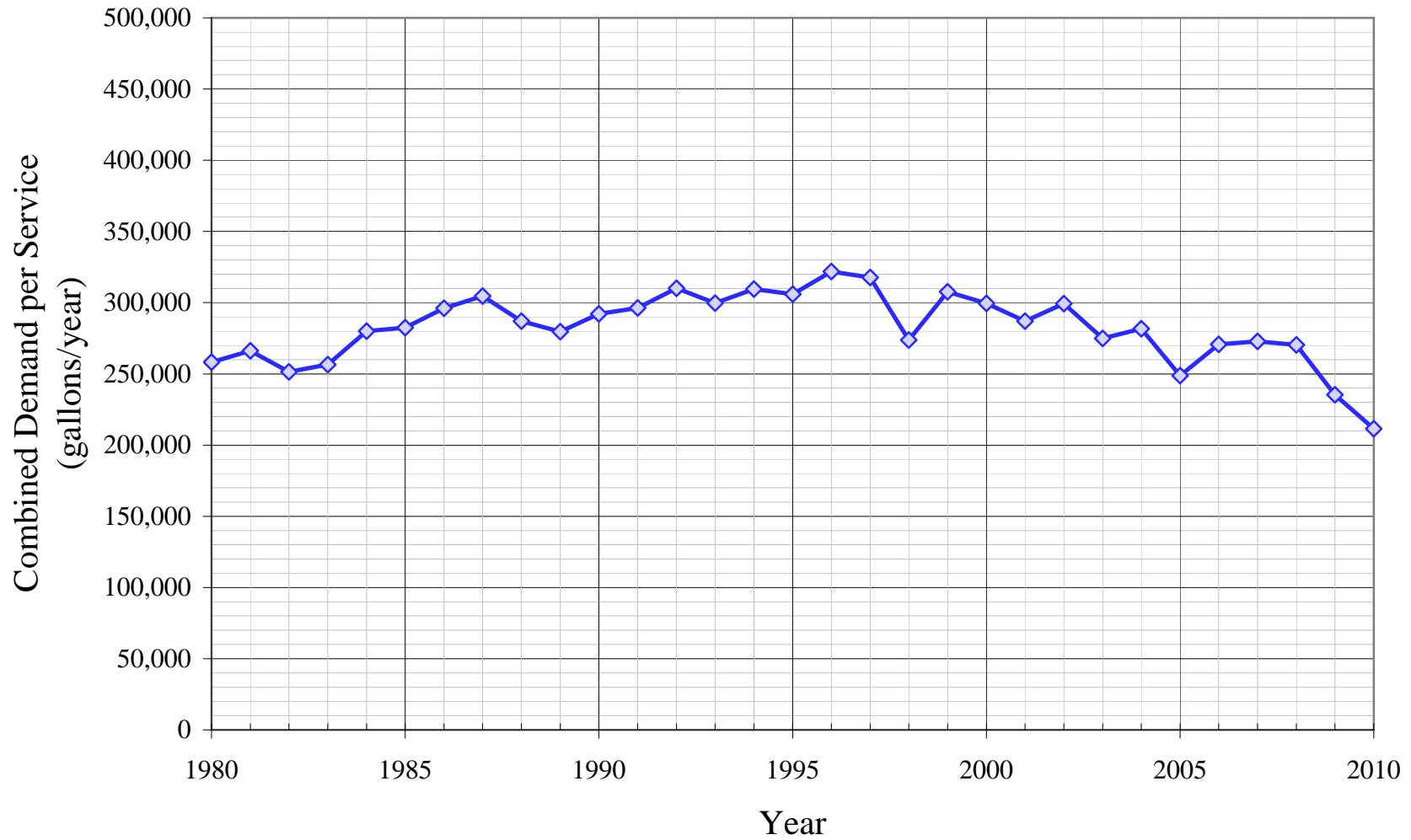
Flat Rate Residential Sales estimated by setting "Unaccounted for Water" at 8.0% of total production.

Five year average = 2005 through 2009.

Ten year average = 2000 through 2009.

Marysville District

Historical Demand per Service



California Water Service Company - Marysville District

Water Supply and Demand Analysis and Projections

Demand per Service (Gallons/Service/Year)

Year	Total	Metered	Flat Rate	Multi-Residential		Commercial	Industrial	Government	Total	Unaccounted/	Combined
	Residential	Residential	Residential	(service)	(unit)				Other	Total Services	
1980	171,214	121,074	175,722	1,400,337	76,176	355,414	6,149,237	1,024,726	206,462	20,658	258,228
1981	171,768	123,521	175,971	1,469,159	78,617	370,036	11,107,076	1,011,887	464,166	21,287	266,093
1982	167,407	120,272	171,365	1,385,072	71,365	338,299	9,003,305	867,688	225,164	20,120	251,497
1983	169,621	120,089	174,013	1,423,842	72,571	351,363	7,715,658	951,656	74,805	20,522	256,526
1984	187,268	149,450	190,796	1,535,571	78,425	371,957	7,685,237	1,112,702	103,979	22,408	280,094
1985	190,776	139,778	195,482	1,446,190	72,953	366,658	7,681,185	1,070,361	691,948	22,593	282,408
1986	198,384	143,800	203,537	1,523,846	74,023	374,020	9,014,214	1,133,144	89,018	23,685	296,067
1987	202,074	145,309	207,746	1,591,436	76,711	376,661	10,464,499	1,233,721	0	24,367	304,589
1988	188,892	146,234	193,398	1,573,045	76,433	373,231	6,885,819	1,110,550	0	22,954	286,920
1989	184,289	137,448	189,310	1,483,180	65,494	367,955	6,460,738	1,025,054	0	22,373	279,664
1990	194,667	134,335	201,373	1,518,154	58,356	371,320	7,049,642	1,099,869	0	23,363	292,034
1991	205,576	124,167	214,886	1,428,802	65,082	361,685	7,307,720	985,368	118,192	23,696	296,201
1992	219,078	126,579	229,869	1,494,700	72,776	363,554	7,678,567	942,799	335,127	24,815	310,192
1993	206,573	125,967	216,295	1,567,238	75,460	368,836	8,006,214	820,779	151,481	23,983	299,782
1994	216,004	139,895	225,261	1,497,347	72,524	376,007	7,545,601	910,777	106,223	24,763	309,541
1995	212,238	132,115	222,208	1,529,640	73,759	368,781	9,949,092	937,239	200,104	24,477	305,963
1996	223,965	142,484	234,447	1,608,220	77,605	383,531	9,598,754	1,019,482	369,912	25,751	321,881
1997	218,815	153,309	227,331	1,604,387	77,191	377,139	6,656,915	1,208,193	105,101	25,407	317,590
1998	180,350	130,181	186,904	1,421,888	69,309	360,525	6,644,697	991,716	78,919	21,899	273,736
1999	207,944	147,238	216,078	1,550,276	76,206	386,554	6,623,003	1,101,782	129,039	24,605	307,561
2000	194,739	145,507	201,381	1,618,249	79,547	389,941	5,168,665	1,170,433	98,992	23,956	299,453
2001	186,261	141,669	192,358	1,681,063	83,369	352,713	4,232,478	1,191,574	53,112	22,959	286,983
2002	196,472	147,381	203,258	1,694,583	83,545	362,372	4,117,839	1,278,473	100,987	23,944	299,300
2003	179,303	148,656	183,973	1,016,645	45,160	329,128	3,953,455	1,219,058	38,151	21,984	274,805
2004	186,423	165,081	189,907	1,012,668	39,916	318,162	3,659,470	1,380,261	47,875	22,542	281,776
2005	158,474	144,272	160,901	931,200	36,404	314,050	1,910,525	1,280,120	9,725	19,900	248,746
2006	182,062	145,686	188,558	948,227	37,105	312,455	323,657	1,379,545	9,974	21,662	270,778
2007	179,222	143,138	186,069	922,318	35,804	333,863	424,520	1,512,756	127,767	21,823	272,783
2008	168,105	138,642	174,441	917,581	35,872	349,972	279,397	1,690,060	123,728	21,627	270,336
2009	148,562	122,429	156,174	899,080	69,332	273,910	199,169	1,546,189	140,313	18,829	235,362
2010	126,878	113,985	132,988	849,039	#DIV/0!	267,487	856,146	1,711,317	111,887	16,911	211,383
5 Yr. Avg.	167,285	138,833	173,229	923,681	42,903	316,850	627,454	1,481,734	82,301	20,768	259,601
10 Yr. Avg.	177,962	144,246	183,702	1,164,161	54,605	333,657	2,426,918	1,364,847	75,062	21,923	274,032

Five year average is from years 2005 through 2009.

Ten year average is from years 2000 through 2009.

California Water Service Company - Marysville District

Water Supply and Demand Analysis and Projections

Demand per Service (Gallons per Day)

Year	Total Residential	Metered Residential	Flat Rate Residential	Multi-Residential (service)	Multi-Residential (unit)	Commercial	Industrial	Government	Total Other	Unaccounted/Total Services	Combined Demand/Service
1980	469	332	481	3,837	209	974	16,847	2,807	566	57	707
1981	471	338	482	4,025	215	1,014	30,430	2,772	1,272	58	729
1982	459	330	469	3,795	196	927	24,667	2,377	617	55	689
1983	465	329	477	3,901	199	963	21,139	2,607	205	56	703
1984	513	409	523	4,207	215	1,019	21,055	3,048	285	61	767
1985	523	383	536	3,962	200	1,005	21,044	2,932	1,896	62	774
1986	544	394	558	4,175	203	1,025	24,696	3,105	244	65	811
1987	554	398	569	4,360	210	1,032	28,670	3,380	0	67	834
1988	518	401	530	4,310	209	1,023	18,865	3,043	0	63	786
1989	505	377	519	4,064	179	1,008	17,701	2,808	0	61	766
1990	533	368	552	4,159	160	1,017	19,314	3,013	0	64	800
1991	563	340	589	3,915	178	991	20,021	2,700	324	65	812
1992	600	347	630	4,095	199	996	21,037	2,583	918	68	850
1993	566	345	593	4,294	207	1,011	21,935	2,249	415	66	821
1994	592	383	617	4,102	199	1,030	20,673	2,495	291	68	848
1995	581	362	609	4,191	202	1,010	27,258	2,568	548	67	838
1996	614	390	642	4,406	213	1,051	26,298	2,793	1,013	71	882
1997	599	420	623	4,396	211	1,033	18,238	3,310	288	70	870
1998	494	357	512	3,896	190	988	18,205	2,717	216	60	750
1999	570	403	592	4,247	209	1,059	18,145	3,019	354	67	843
2000	534	399	552	4,434	218	1,068	14,161	3,207	271	66	820
2001	510	388	527	4,606	228	966	11,596	3,265	146	63	786
2002	538	404	557	4,643	229	993	11,282	3,503	277	66	820
2003	491	407	504	2,785	124	902	10,831	3,340	105	60	753
2004	511	452	520	2,774	109	872	10,026	3,782	131	62	772
2005	434	395	441	2,551	100	860	5,234	3,507	27	55	681
2006	499	399	517	2,598	102	856	887	3,780	27	59	742
2007	491	392	510	2,527	98	915	1,163	4,145	350	60	747
2008	461	380	478	2,514	98	959	765	4,630	339	59	741
2009	407	335	428	2,463	190	750	546	4,236	384	52	645
2010	348	312	364	2,326	#DIV/0!	733	2,346	4,689	307	46	579
5 Yr. Avg.	458	380	475	2,531	118	868	1,719	4,060	225	57	711
10 Yr. Avg.	488	395	503	3,189	150	914	6,649	3,739	206	60	751

Five year average is from years 2005 through 2009.

Ten year average is from years 2000 through 2009.

California Water Service Company - Marysville District

Worksheet 7

Water Supply and Demand Analysis and Projections

Percentage Change in Annual Demand

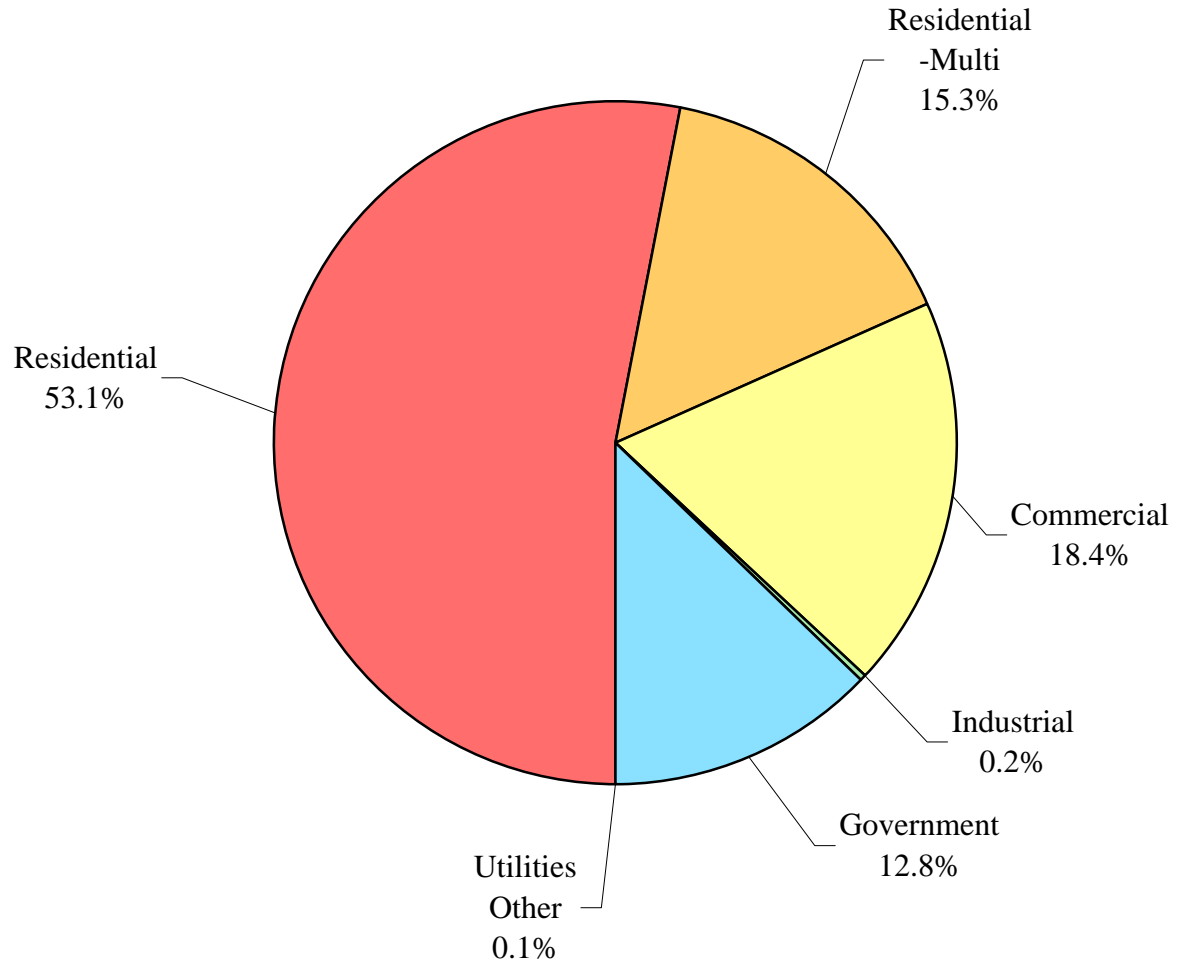
Year	Total S.F. Residential	Metered Residential	Flat Rate Residential	Multi-Residential	Commercial	Industrial	Government	Other	Unaccounted Water	Total
1981	1.96%	0.73%	2.04%	7.15%	4.78%	80.63%	-2.99%	349.64%	4.53%	4.53%
1982	-2.21%	-5.54%	-2.00%	-3.76%	-6.83%	-18.94%	-12.72%	-75.75%	-4.89%	-4.89%
1983	1.46%	5.13%	1.24%	4.90%	2.89%	-14.30%	7.75%	-66.78%	1.94%	1.94%
1984	11.12%	31.22%	9.89%	7.85%	5.86%	-0.39%	21.10%	39.00%	9.81%	9.81%
1985	2.49%	-6.84%	3.18%	-3.94%	-2.83%	33.26%	-2.15%	565.47%	1.15%	1.15%
1986	4.69%	5.75%	4.62%	19.83%	2.99%	17.35%	4.07%	-87.14%	5.74%	5.74%
1987	1.96%	6.53%	1.66%	6.24%	1.98%	16.09%	7.00%	-100.00%	3.15%	3.15%
1988	-6.52%	5.82%	-7.39%	3.87%	-0.91%	-34.20%	-11.56%	0.00%	-5.75%	-5.75%
1989	-2.40%	-4.69%	-2.22%	-1.15%	-1.72%	-6.17%	-6.05%	0.00%	-2.45%	-2.45%
1990	5.77%	1.11%	6.14%	2.36%	1.07%	9.12%	9.18%	0.00%	4.59%	4.59%
1991	5.67%	-5.10%	6.47%	-5.89%	-2.14%	3.66%	-11.96%	0.00%	1.56%	1.56%
1992	6.39%	3.60%	6.58%	4.61%	-0.27%	5.07%	4.07%	183.54%	4.58%	4.58%
1993	-5.55%	2.70%	-6.08%	4.85%	0.97%	4.27%	-11.54%	-9.60%	-3.25%	-3.25%
1994	4.11%	11.40%	3.60%	-4.46%	2.11%	-5.75%	12.73%	-64.94%	2.93%	2.93%
1995	-1.94%	-3.81%	-1.80%	2.16%	-3.16%	-1.11%	2.91%	276.76%	-1.52%	-1.52%
1996	5.56%	11.12%	5.15%	5.14%	3.17%	-3.52%	12.17%	84.86%	5.15%	5.15%
1997	-2.92%	7.91%	-3.77%	-0.24%	-2.78%	-30.65%	20.31%	-71.59%	-1.99%	-1.99%
1998	-17.69%	-14.84%	-17.94%	-10.01%	-5.34%	-0.18%	-17.92%	-24.91%	-14.02%	-14.02%
1999	15.38%	15.75%	15.34%	10.68%	7.22%	-0.33%	12.76%	63.51%	12.48%	12.48%
2000	-6.38%	-0.61%	-6.91%	4.38%	1.87%	4.05%	4.67%	15.07%	-2.48%	-2.48%
2001	-4.13%	-1.25%	-4.41%	3.88%	-10.43%	-18.11%	9.40%	-46.35%	-4.01%	-4.01%
2002	5.94%	5.49%	5.99%	0.80%	3.08%	-2.71%	7.29%	90.14%	4.71%	4.71%
2003	-7.85%	10.90%	-9.73%	11.93%	-20.06%	-3.99%	-3.32%	-74.81%	-7.84%	-7.84%
2004	4.11%	18.02%	2.40%	1.20%	-5.14%	-7.44%	10.12%	25.49%	2.37%	2.37%
2005	-15.16%	-9.30%	-15.99%	-8.77%	-0.92%	-60.84%	-8.56%	-79.69%	-11.89%	-11.89%
2006	14.69%	4.66%	16.23%	1.83%	-0.32%	-83.06%	9.31%	53.85%	8.80%	8.80%
2007	-1.76%	3.22%	-2.44%	-3.50%	7.05%	74.88%	6.57%	2035.00%	0.61%	0.61%
2008	-7.17%	6.38%	-9.15%	0.28%	3.44%	-34.19%	14.96%	-3.16%	-1.83%	-1.83%
2009	-12.55%	11.35%	-16.63%	-3.57%	-24.28%	-28.71%	-16.24%	58.77%	-14.21%	-14.21%
2010	-13.67%	34.17%	-24.59%	-2.52%	-5.82%	114.93%	-9.75%	-20.26%	-10.09%	-10.09%
5 Yr. Avg.	-4.39%	3.26%	-5.60%	-2.75%	-3.01%	-26.38%	1.21%	412.95%	-3.70%	-3.70%
10 Yr. Avg.	-3.03%	4.89%	-4.06%	0.85%	-4.57%	-16.01%	3.42%	207.43%	-2.58%	-2.58%

Five Year Average is from 2005 through 2009.

Ten Year Average is from 2000 through 2009.

Marysville

Percent of Total Sales by Type of Use (2010)



California Water Service Company - Marysville District
Water Supply and Demand Analysis and Projections
Percentage of Total Sales

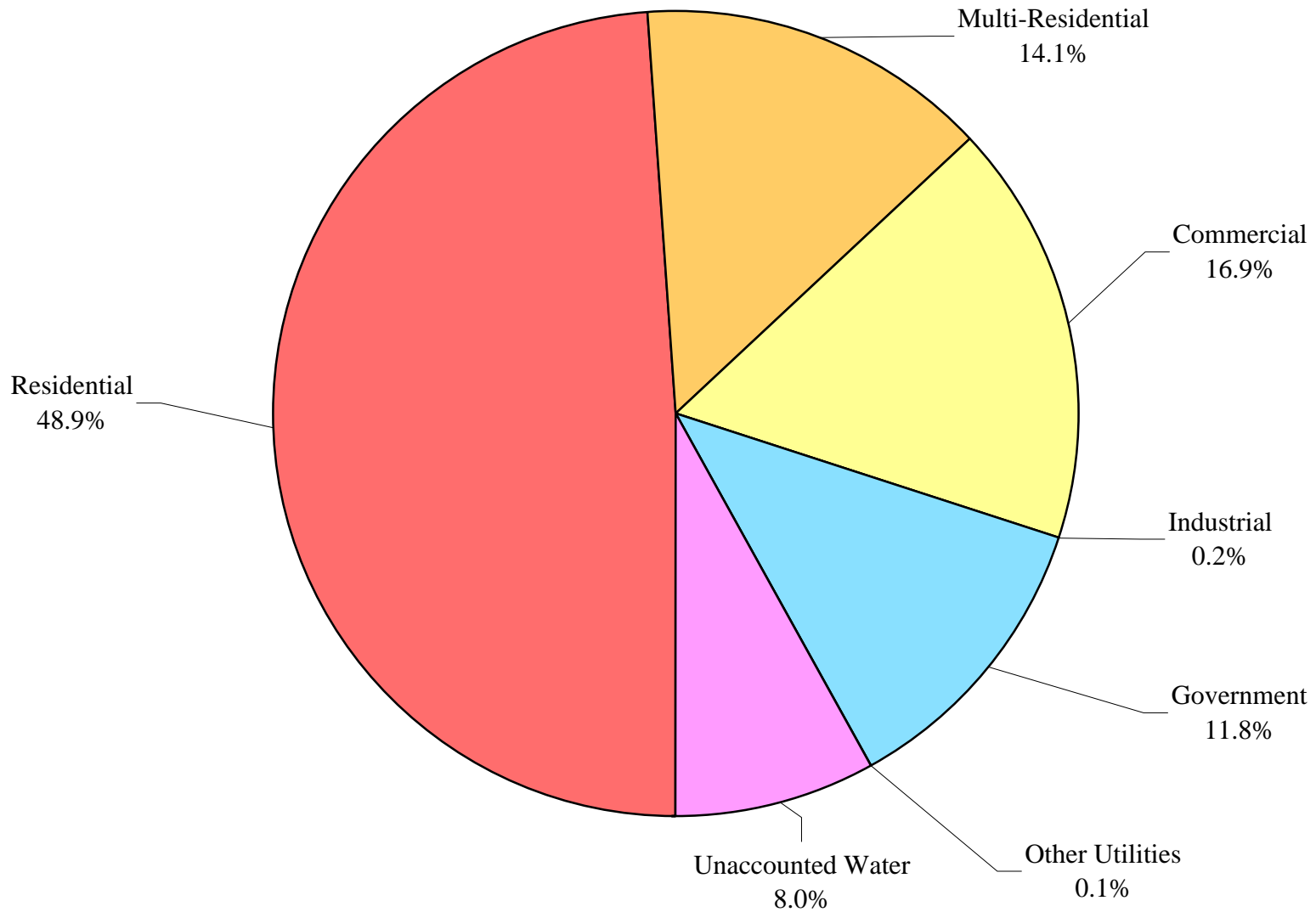
Year	Multi-					Other	Percent Total
	Residential	Residential	Commercial	Industrial	Government	Utilities	
1980	57.5%	7.7%	25.9%	2.2%	6.8%	0.0%	100.0%
1981	56.0%	7.9%	25.9%	3.7%	6.3%	0.1%	100.0%
1982	57.6%	8.0%	25.4%	3.2%	5.8%	0.0%	100.0%
1983	57.3%	8.2%	25.6%	2.7%	6.1%	0.0%	100.0%
1984	58.0%	8.1%	24.7%	2.4%	6.8%	0.0%	100.0%
1985	58.8%	7.7%	23.7%	3.2%	6.6%	0.1%	100.0%
1986	58.2%	8.7%	23.1%	3.5%	6.4%	0.0%	100.0%
1987	57.5%	8.9%	22.9%	4.0%	6.7%	0.0%	100.0%
1988	57.1%	9.8%	24.0%	2.8%	6.3%	0.0%	100.0%
1989	57.1%	10.0%	24.2%	2.7%	6.0%	0.0%	100.0%
1990	57.7%	9.8%	23.4%	2.8%	6.3%	0.0%	100.0%
1991	60.1%	9.0%	22.5%	2.8%	5.5%	0.0%	100.0%
1992	61.1%	9.0%	21.5%	2.9%	5.4%	0.0%	100.0%
1993	59.7%	9.8%	22.4%	3.1%	5.0%	0.0%	100.0%
1994	60.4%	9.1%	22.3%	2.8%	5.5%	0.0%	100.0%
1995	60.1%	9.4%	21.9%	2.8%	5.7%	0.0%	100.0%
1996	60.3%	9.4%	21.5%	2.6%	6.1%	0.1%	100.0%
1997	59.8%	9.6%	21.3%	1.8%	7.5%	0.0%	100.0%
1998	57.2%	10.1%	23.5%	2.1%	7.1%	0.0%	100.0%
1999	58.7%	9.9%	22.4%	1.9%	7.1%	0.0%	100.0%
2000	56.3%	10.6%	23.4%	2.0%	7.7%	0.0%	100.0%
2001	56.3%	11.5%	21.8%	1.7%	8.7%	0.0%	100.0%
2002	56.9%	11.0%	21.5%	1.6%	8.9%	0.0%	100.0%
2003	56.9%	13.4%	18.6%	1.7%	9.4%	0.0%	100.0%
2004	57.9%	13.3%	17.2%	1.5%	10.1%	0.0%	100.0%
2005	55.7%	13.7%	19.4%	0.7%	10.5%	0.0%	100.0%
2006	58.8%	12.8%	17.8%	0.1%	10.5%	0.0%	100.0%
2007	57.4%	12.3%	18.9%	0.2%	11.2%	0.1%	100.0%
2008	54.3%	12.6%	19.9%	0.1%	13.1%	0.1%	100.0%
2009	55.3%	14.1%	17.6%	0.1%	12.7%	0.1%	100.0%
2010	53.1%	15.3%	18.4%	0.2%	12.8%	0.1%	100.0%
5 Yr. Avg.	56.3%	13.1%	18.7%	0.2%	11.6%	0.1%	100.0%
10 Yr. Avg.	56.6%	12.5%	19.6%	1.0%	10.3%	0.0%	100.0%

Five Year Average is from 2005 through 2009.

Ten Year Average is from 2000 through 2009.

Marysville

Percent of Total Demand by Type of Use (2010)



Service Growth Percentage
Water Supply and Demand Analysis and Projections
Percentage of Total Demand

Year	Residential	Multi-Residential	Commercial	Industrial	Government	Other Utilities	Unaccounted Water	Percent Total
1980	52.9%	7.1%	23.8%	2.0%	6.3%	0.0%	8.0%	100.0%
1981	51.6%	7.2%	23.8%	3.4%	5.8%	0.1%	8.0%	100.0%
1982	53.0%	7.3%	23.4%	2.9%	5.3%	0.0%	8.0%	100.0%
1983	52.8%	7.5%	23.6%	2.5%	5.6%	0.0%	8.0%	100.0%
1984	53.4%	7.4%	22.7%	2.2%	6.2%	0.0%	8.0%	100.0%
1985	54.1%	7.0%	21.8%	2.9%	6.0%	0.1%	8.0%	100.0%
1986	53.6%	8.0%	21.3%	3.3%	5.9%	0.0%	8.0%	100.0%
1987	52.9%	8.2%	21.0%	3.7%	6.2%	0.0%	8.0%	100.0%
1988	52.5%	9.1%	22.1%	2.6%	5.8%	0.0%	8.0%	100.0%
1989	52.5%	9.2%	22.3%	2.5%	5.6%	0.0%	8.0%	100.0%
1990	53.1%	9.0%	21.5%	2.6%	5.8%	0.0%	8.0%	100.0%
1991	55.3%	8.3%	20.7%	2.6%	5.0%	0.0%	8.0%	100.0%
1992	56.2%	8.3%	19.8%	2.6%	5.0%	0.0%	8.0%	100.0%
1993	54.9%	9.0%	20.6%	2.8%	4.6%	0.0%	8.0%	100.0%
1994	55.5%	8.4%	20.5%	2.6%	5.0%	0.0%	8.0%	100.0%
1995	55.3%	8.7%	20.1%	2.6%	5.2%	0.0%	8.0%	100.0%
1996	55.5%	8.7%	19.8%	2.4%	5.6%	0.1%	8.0%	100.0%
1997	55.0%	8.8%	19.6%	1.7%	6.9%	0.0%	8.0%	100.0%
1998	52.6%	9.3%	21.6%	2.0%	6.6%	0.0%	8.0%	100.0%
1999	54.0%	9.1%	20.6%	1.7%	6.6%	0.0%	8.0%	100.0%
2000	51.8%	9.7%	21.5%	1.9%	7.0%	0.0%	8.0%	100.0%
2001	51.8%	10.5%	20.0%	1.6%	8.0%	0.0%	8.0%	100.0%
2002	52.4%	10.2%	19.7%	1.5%	8.2%	0.0%	8.0%	100.0%
2003	52.4%	12.3%	17.1%	1.5%	8.6%	0.0%	8.0%	100.0%
2004	53.3%	12.2%	15.9%	1.4%	9.3%	0.0%	8.0%	100.0%
2005	51.3%	12.6%	17.8%	0.6%	9.6%	0.0%	8.0%	100.0%
2006	54.1%	11.8%	16.3%	0.1%	9.7%	0.0%	8.0%	100.0%
2007	52.8%	11.3%	17.4%	0.2%	10.3%	0.1%	8.0%	100.0%
2008	49.9%	11.6%	18.3%	0.1%	12.0%	0.1%	8.0%	100.0%
2009	50.9%	13.0%	16.2%	0.1%	11.7%	0.1%	8.0%	100.0%
2010	48.9%	14.1%	16.9%	0.2%	11.8%	0.1%	8.0%	100.0%
5 Yr. Avg.	51.8%	12.1%	17.2%	0.2%	10.7%	0.0%	8.0%	100.0%
10 Yr. Avg.	52.1%	11.5%	18.0%	0.9%	9.5%	0.0%	8.0%	100.0%

Five Year Average is from 2005 through 2009.

Ten Year Average is from 2000 through 2009.

California Water Service Company - Marysville District

Water Supply and Demand Analysis and Projections

Worksheet 10

Scenario #1: Based on Maintaining Growth at the Adjusted Historical Annual Growth and Low Demand per Service for each Customer Class.
 Average High

Summary of Historical Growth Rate from Worksheet 2			
Customer Type	Adjusted Historical Growth Rate	Individual Growth Rate Selected	Notes
Single Family Residential	0.075%	0.075%	Historical Growth Rate Used
Multi Family Residential	4.223%	0.037%	Overall growth rate assumed
Commercial	-0.684%	0.037%	Overall growth rate assumed
Industrial	1.724%	1.724%	Historical Growth Rate Used
Government	0.505%	0.505%	Historical Growth Rate Used
Other	9.426%	0.037%	Overall growth rate assumed
Overall	0.037%	0.079%	

Summary of Lowest Demand per Service from Worksheets 5 and 6									
Demand/Serv. Units	Multi-Residential			Commercial	Industrial	Government	Total Other	Unaccounted Total Serv.	Combined Demand/Serv.
	Residential	(service)	(unit)						
Gal/Service/Yr	148,562	899,080	69,332	273,910	199,169	820,779	0	18,829	235,362
AF/Service/Yr	0.456	2.759	0.213	0.841	0.611	2.519	0.000	0.058	0.722
Gal/Service/Day	407	2,463	190	750	546	2,249	0	52	645

California Water Service Company - Marysville District

Water Supply and Demand Analysis and Projections

Worksheet 10

30-year projection Summary

Scenario #1: Based on Maintaining Growth at the Adjusted Historical Annual Growth and Low Demand per Service for each Customer Class.
 Average High

Customer Type	Projected Services 2010	Projected Services 2015	Projected Services 2020	Projected Services 2025	Projected Services 2030	Projected Services 2035	Projected Services 2040	Services projected to be added from 2010 - 2040
Single Family Residential	2,937	2,948	2,959	2,971	2,982	2,993	3,004	67
Multi Family Residential	124	124	124	125	125	125	125	1
Commercial	506	507	508	509	510	511	512	6
Industrial	4	4	5	5	6	6	7	3
Government	65	67	69	70	72	74	76	11
Other	7	7	7	7	7	7	7	0
Total	3,644	3,658	3,672	3,687	3,702	3,716	3,731	87

Customer Type	Projected Demand 2010 (ccf)	Projected Demand 2015 (ccf)	Projected Demand 2020 (ccf)	Projected Demand 2025 (ccf)	Projected Demand 2030 (ccf)	Projected Demand 2035 (ccf)	Projected Demand 2040 (ccf)	Projected demand to be added from 2010 - 2040 (ccf)
Single Family Residential	583,324	585,519	587,723	589,936	592,157	594,386	596,623	13,299
Multi Family Residential	149,089	149,362	149,635	149,908	150,183	150,457	150,732	1,644
Commercial	185,346	185,685	186,025	186,365	186,706	187,047	187,389	2,043
Industrial	1,083	1,180	1,285	1,400	1,525	1,661	1,809	726
Government	71,679	73,507	75,381	77,303	79,274	81,295	83,368	11,689
Other	0	0	0	0	0	0	0	0
Unaccounted	91,717	92,076	92,438	92,802	93,170	93,542	93,916	2,199
Total	1,082,238	1,087,329	1,092,487	1,097,714	1,103,014	1,108,388	1,113,838	31,600

Customer Type	Projected Demand 2010 (AF)	Projected Demand 2015 (AF)	Projected Demand 2020 (AF)	Projected Demand 2025 (AF)	Projected Demand 2030 (AF)	Projected Demand 2035 (AF)	Projected Demand 2040 (AF)	Projected demand to be added from 2010 - 2040 (AF)
Single Family Residential	1,339	1,344	1,349	1,354	1,359	1,365	1,370	31
Multi Family Residential	342	343	344	344	345	345	346	4
Commercial	425	426	427	428	429	429	430	5
Industrial	2	3	3	3	4	4	4	2
Government	165	169	173	177	182	187	191	27
Other	0	0	0	0	0	0	0	0
Unaccounted	211	211	212	213	214	215	216	5
Total	2,484	2,496	2,508	2,520	2,532	2,545	2,557	73

California Water Service Company - Marysville District

Water Supply and Demand Analysis and Projections

Worksheet 10

2000's Projections

Scenario #1: Based on Maintaining Growth at the

Adjusted
Historical Annual Growth and
 Low
 Average
 High
 Demand per Service for each Customer Class.

Customer Type	Actual Services 2001	Actual Services 2002	Actual Services 2003	Actual Services 2004	Actual Services 2005	Actual Services 2006	Actual Services 2007	Actual Services 2008	Actual Services 2009	Projected Services 2010
Residential	2,968	2,981	3,010	3,014	3,008	3,003	2,997	2,966	2,935	2,937
Multi-Residential	67	67	125	127	126	126	125	126	124	124
Commercial	607	609	536	526	528	529	530	523	506	506
Industrial	4	4	4	4	3	3	4	4	4	4
Government	72	72	73	71	70	71	69	71	65	65
Other	3	3	2	2	2	3	5	5	7	7
Total	3,721	3,736	3,750	3,744	3,737	3,735	3,730	3,695	3,641	3,644

Customer Type	Demand 2001(ccf)	Demand 2002(ccf)	Demand 2003(ccf)	Demand 2004(ccf)	Demand 2005(ccf)	Demand 2006(ccf)	Demand 2007(ccf)	Demand 2008(ccf)	Demand 2009(ccf)	Demand 2010(ccf)
Residential	589,439	592,021	597,780	598,575	597,383	596,390	595,199	589,042	582,885	583,324
Multi-Residential	80,527	80,527	150,236	152,640	151,438	151,438	150,236	151,438	149,034	149,089
Commercial	222,261	222,993	196,263	192,601	193,334	193,700	194,066	191,503	185,278	185,346
Industrial	1,065	1,065	1,065	1,065	799	799	1,065	1,065	1,065	1,083
Government	79,000	79,000	80,097	77,902	76,805	77,902	75,708	77,902	71,319	71,679
Other	0	0	0	0	0	0	0	0	0	0
Unaccounted	93,660	94,037	94,389	94,238	94,062	94,012	93,886	93,005	91,646	91,717
Total	1,065,951	1,069,642	1,119,831	1,117,022	1,113,821	1,114,241	1,110,160	1,103,956	1,081,228	1,082,238

Customer Type	Demand 2001(AF)	Demand 2002(AF)	Demand 2003(AF)	Demand 2004(AF)	Demand 2005(AF)	Demand 2006(AF)	Demand 2007(AF)	Demand 2008(AF)	Demand 2009(AF)	Demand 2010(AF)
Residential	1,353	1,359	1,372	1,374	1,371	1,369	1,366	1,352	1,338	1,339
Multi-Residential	185	185	345	350	348	348	345	348	342	342
Commercial	510	512	451	442	444	445	446	440	425	425
Industrial	2	2	2	2	2	2	2	2	2	2
Government	181	181	184	179	176	179	174	179	164	165
Other	0	0	0	0	0	0	0	0	0	0
Unaccounted	215	216	217	216	216	216	216	214	210	211
Total	2,447	2,456	2,571	2,564	2,557	2,558	2,549	2,534	2,482	2,484

California Water Service Company - Marysville District Water Supply and Demand Analysis and Projections

Worksheet 10

Scenario #1: Based on Maintaining Growth at the

Adjusted
Historical Annual Growth and

Low
 Average
 High

Demand per Service for each Customer Class.

2010's Projections

Customer Type	Projected Services 2011	Projected Services 2012	Projected Services 2013	Projected Services 2014	Projected Services 2015	Projected Services 2016	Projected Services 2017	Projected Services 2018	Projected Services 2019	Projected Services 2020
Residential	2,939	2,942	2,944	2,946	2,948	2,950	2,953	2,955	2,957	2,959
Multi-Residential	124	124	124	124	124	124	124	124	124	124
Commercial	506	507	507	507	507	507	507	508	508	508
Industrial	4	4	4	4	4	5	5	5	5	5
Government	66	66	66	67	67	67	68	68	68	69
Other	7	7	7	7	7	7	7	7	7	7
Total	3,647	3,650	3,652	3,655	3,658	3,661	3,664	3,667	3,670	3,672

Customer Type	Demand 2011(ccf)	Demand 2012(ccf)	Demand 2013(ccf)	Demand 2014(ccf)	Demand 2015(ccf)	Demand 2016(ccf)	Demand 2017(ccf)	Demand 2018(ccf)	Demand 2019(ccf)	Demand 2020(ccf)
Residential	583,762	584,201	584,640	585,080	585,519	585,960	586,400	586,841	587,282	587,723
Multi-Residential	149,143	149,198	149,252	149,307	149,362	149,416	149,471	149,525	149,580	149,635
Commercial	185,414	185,481	185,549	185,617	185,685	185,753	185,821	185,889	185,957	186,025
Industrial	1,102	1,121	1,140	1,160	1,180	1,200	1,221	1,242	1,263	1,285
Government	72,041	72,405	72,770	73,138	73,507	73,878	74,251	74,626	75,002	75,381
Other	0	0	0	0	0	0	0	0	0	0
Unaccounted	91,789	91,860	91,932	92,004	92,076	92,148	92,220	92,293	92,365	92,438
Total	1,083,251	1,084,266	1,085,285	1,086,305	1,087,329	1,088,355	1,089,384	1,090,415	1,091,450	1,092,487

Customer Type	Demand 2011(AF)	Demand 2012(AF)	Demand 2013(AF)	Demand 2014(AF)	Demand 2015(AF)	Demand 2016(AF)	Demand 2017(AF)	Demand 2018(AF)	Demand 2019(AF)	Demand 2020(AF)
Residential	1,340	1,341	1,342	1,343	1,344	1,345	1,346	1,347	1,348	1,349
Multi-Residential	342	343	343	343	343	343	343	343	343	344
Commercial	426	426	426	426	426	426	427	427	427	427
Industrial	3	3	3	3	3	3	3	3	3	3
Government	165	166	167	168	169	170	170	171	172	173
Other	0	0	0	0	0	0	0	0	0	0
Unaccounted	211	211	211	211	211	212	212	212	212	212
Total	2,487	2,489	2,491	2,494	2,496	2,499	2,501	2,503	2,506	2,508

California Water Service Company - Marysville District

Water Supply and Demand Analysis and Projections

2020's Projections

Scenario #1: Based on Maintaining Growth at the

Adjusted Historical Annual Growth and

- Low
 - Average
 - High
- Demand per Service for each Customer Class.

Customer Type	Projected Services 2021	Projected Services 2022	Projected Services 2023	Projected Services 2024	Projected Services 2025	Projected Services 2026	Projected Services 2027	Projected Services 2028	Projected Services 2029	Projected Services 2030
Residential	2,962	2,964	2,966	2,968	2,971	2,973	2,975	2,977	2,979	2,982
Multi-Residential	125	125	125	125	125	125	125	125	125	125
Commercial	508	508	509	509	509	509	509	510	510	510
Industrial	5	5	5	5	5	5	5	6	6	6
Government	69	69	70	70	70	71	71	72	72	72
Other	7	7	7	7	7	7	7	7	7	7
Total	3,675	3,678	3,681	3,684	3,687	3,690	3,693	3,696	3,699	3,702

Customer Type	Demand 2021(ccf)	Demand 2022(ccf)	Demand 2023(ccf)	Demand 2024(ccf)	Demand 2025(ccf)	Demand 2026(ccf)	Demand 2027(ccf)	Demand 2028(ccf)	Demand 2029(ccf)	Demand 2030(ccf)
Residential	588,165	588,607	589,050	589,493	589,936	590,379	590,823	591,267	591,712	592,157
Multi-Residential	149,689	149,744	149,799	149,854	149,908	149,963	150,018	150,073	150,128	150,183
Commercial	186,093	186,161	186,229	186,297	186,365	186,433	186,501	186,569	186,637	186,706
Industrial	1,307	1,330	1,353	1,376	1,400	1,424	1,449	1,474	1,499	1,525
Government	75,762	76,144	76,528	76,915	77,303	77,693	78,086	78,480	78,876	79,274
Other	0	0	0	0	0	0	0	0	0	0
Unaccounted	92,510	92,583	92,656	92,729	92,802	92,876	92,949	93,023	93,097	93,170
Total	1,093,527	1,094,569	1,095,615	1,096,663	1,097,714	1,098,769	1,099,826	1,100,885	1,101,948	1,103,014

Customer Type	Demand 2021(AF)	Demand 2022(AF)	Demand 2023(AF)	Demand 2024(AF)	Demand 2025(AF)	Demand 2026(AF)	Demand 2027(AF)	Demand 2028(AF)	Demand 2029(AF)	Demand 2030(AF)
Residential	1,350	1,351	1,352	1,353	1,354	1,355	1,356	1,357	1,358	1,359
Multi-Residential	344	344	344	344	344	344	344	345	345	345
Commercial	427	427	428	428	428	428	428	428	428	429
Industrial	3	3	3	3	3	3	3	3	3	4
Government	174	175	176	177	177	178	179	180	181	182
Other	0	0	0	0	0	0	0	0	0	0
Unaccounted	212	213	213	213	213	213	213	214	214	214
Total	2,510	2,513	2,515	2,518	2,520	2,522	2,525	2,527	2,530	2,532

California Water Service Company - Marysville District

Water Supply and Demand Analysis and Projections

Scenario #1: Based on Maintaining Growth at the

Adjusted Historical Annual Growth and

2030's Projections

- Low
 - Average
 - High
- Demand per Service for each Customer Class.

Customer Type	Projected Services 2031	Projected Services 2032	Projected Services 2033	Projected Services 2034	Projected Services 2035	Projected Services 2036	Projected Services 2037	Projected Services 2038	Projected Services 2039	Projected Services 2040
Residential	2,984	2,986	2,988	2,991	2,993	2,995	2,997	3,000	3,002	3,004
Multi-Residential	125	125	125	125	125	125	125	125	125	125
Commercial	510	510	510	511	511	511	511	511	512	512
Industrial	6	6	6	6	6	6	6	7	7	7
Government	73	73	73	74	74	74	75	75	76	76
Other	7	7	7	7	7	7	7	7	7	7
Total	3,705	3,707	3,710	3,713	3,716	3,719	3,722	3,725	3,728	3,731

Customer Type	Demand 2031(ccf)	Demand 2032(ccf)	Demand 2033(ccf)	Demand 2034(ccf)	Demand 2035(ccf)	Demand 2036(ccf)	Demand 2037(ccf)	Demand 2038(ccf)	Demand 2039(ccf)	Demand 2040(ccf)
Residential	592,602	593,047	593,493	593,939	594,386	594,832	595,280	595,727	596,175	596,623
Multi-Residential	150,237	150,292	150,347	150,402	150,457	150,512	150,567	150,622	150,677	150,732
Commercial	186,774	186,842	186,910	186,979	187,047	187,115	187,184	187,252	187,321	187,389
Industrial	1,551	1,578	1,605	1,633	1,661	1,689	1,719	1,748	1,778	1,809
Government	79,674	80,077	80,481	80,887	81,295	81,706	82,118	82,533	82,950	83,368
Other	0	0	0	0	0	0	0	0	0	0
Unaccounted	93,244	93,318	93,393	93,467	93,542	93,616	93,691	93,766	93,841	93,916
Total	1,104,083	1,105,155	1,106,229	1,107,307	1,108,388	1,109,472	1,110,559	1,111,649	1,112,742	1,113,838

Customer Type	Demand 2031(AF)	Demand 2032(AF)	Demand 2033(AF)	Demand 2034(AF)	Demand 2035(AF)	Demand 2036(AF)	Demand 2037(AF)	Demand 2038(AF)	Demand 2039(AF)	Demand 2040(AF)
Residential	1,360	1,361	1,362	1,364	1,365	1,366	1,367	1,368	1,369	1,370
Multi-Residential	345	345	345	345	345	346	346	346	346	346
Commercial	429	429	429	429	429	430	430	430	430	430
Industrial	4	4	4	4	4	4	4	4	4	4
Government	183	184	185	186	187	188	189	189	190	191
Other	0	0	0	0	0	0	0	0	0	0
Unaccounted	214	214	214	215	215	215	215	215	215	216
Total	2,535	2,537	2,540	2,542	2,545	2,547	2,550	2,552	2,555	2,557

California Water Service Company - Marysville District

Water Supply and Demand Analysis and Projections

Worksheet 11

Scenario #2: Based on Maintaining Growth at the

Adjusted
Historical

Average Annual Growth and

 Low Average High

Demand per Service for each Customer Class.

Summary of Historical Growth Rate from Worksheet 2			
Customer Type	Adjusted Historical Growth Rate	Individual Growth Rate Selected	Notes
Single Family Residential	0.075%	0.075%	Historical Growth Rate Used
Multi Family Residential	4.223%	0.037%	Overall growth rate assumed
Commercial	-0.684%	0.037%	Overall growth rate assumed
Industrial	1.724%	1.724%	Historical Growth Rate Used
Government	0.505%	0.505%	Historical Growth Rate Used
Other	9.426%	0.037%	Overall growth rate assumed
Overall	0.037%	0.079%	

Summary of Average Demand per Service from Worksheets 5 and 6									
Demand/Serv. Units	Multi-Residential			Commercial	Industrial	Government	Total Other	Unaccounted Total Serv.	Combined Demand/Serv.
	Residential	(service)	(unit)						
Gal/Service/Yr	190,776	1,446,190	72,953	366,658	7,681,185	1,070,361	140,009	22,593	282,408
AF/Service/Yr	0.585	4.438	0.224	1.125	23.573	3.285	0.430	0.069	0.867
Gal/Service/Day	523	3,962	200	1,005	21,044	2,932	384	62	774

California Water Service Company - Marysville District

Water Supply and Demand Analysis and Projections

Worksheet 11

30-year projection Summary

Scenario #2: Based on Maintaining Growth at the

Adjusted
Historical Annual Growth and
 Low
 Average Demand per Service for each Customer Class.
 High

Customer Type	Projected Services 2010	Projected Services 2015	Projected Services 2020	Projected Services 2025	Projected Services 2030	Projected Services 2035	Projected Services 2040	Services projected to be added from 2010 - 2040
Single Family Residential	2,937	2,948	2,959	2,971	2,982	2,993	3,004	67
Multi Family Residential	124	124	124	125	125	125	125	1
Commercial	506	507	508	509	510	511	512	6
Industrial	4	4	5	5	6	6	7	3
Government	65	67	69	70	72	74	76	11
Other	7	7	7	7	7	7	7	0
Total	3,644	3,658	3,672	3,687	3,702	3,716	3,731	87

Customer Type	Projected Demand 2010 (ccf)	Projected Demand 2015 (ccf)	Projected Demand 2020 (ccf)	Projected Demand 2025 (ccf)	Projected Demand 2030 (ccf)	Projected Demand 2035 (ccf)	Projected Demand 2040 (ccf)	Projected demand to be added from 2010 - 2040 (ccf)
Single Family Residential	749,073	751,893	754,723	757,564	760,416	763,278	766,152	17,078
Multi Family Residential	239,813	240,251	240,691	241,131	241,572	242,014	242,456	2,644
Commercial	248,106	248,560	249,014	249,470	249,926	250,383	250,841	2,735
Industrial	41,781	45,508	49,568	53,990	58,807	64,053	69,768	27,987
Government	93,475	95,859	98,303	100,809	103,380	106,016	108,719	15,243
Other	1,311	1,313	1,315	1,318	1,320	1,323	1,325	14
Unaccounted	110,050	110,481	110,915	111,352	111,794	112,239	112,689	2,639
Total	1,483,609	1,493,865	1,504,529	1,515,635	1,527,215	1,539,306	1,551,949	68,340

Customer Type	Projected Demand 2010 (AF)	Projected Demand 2015 (AF)	Projected Demand 2020 (AF)	Projected Demand 2025 (AF)	Projected Demand 2030 (AF)	Projected Demand 2035 (AF)	Projected Demand 2040 (AF)	Projected demand to be added from 2010 - 2040 (AF)
Single Family Residential	1,720	1,726	1,733	1,739	1,746	1,752	1,759	39
Multi Family Residential	551	552	553	554	555	556	557	6
Commercial	570	571	572	573	574	575	576	6
Industrial	96	104	114	124	135	147	160	64
Government	215	220	226	231	237	243	250	35
Other	3	3	3	3	3	3	3	0
Unaccounted	253	254	255	256	257	258	259	6
Total	3,406	3,429	3,454	3,479	3,506	3,534	3,563	157

California Water Service Company - Marysville District

Water Supply and Demand Analysis and Projections

Worksheet 11

Scenario #2: Based on Maintaining Growth at the

Adjusted
Historical Annual Growth and**2000's Projections**

- Low
 Average Demand per Service for each Customer Class.
 High

Customer Type	Actual Services 2001	Actual Services 2002	Actual Services 2003	Actual Services 2004	Actual Services 2005	Actual Services 2006	Actual Services 2007	Actual Services 2008	Actual Services 2009	Projected Services 2010
Residential	2,968	2,981	3,010	3,014	3,008	3,003	2,997	2,966	2,935	2,937
Multi-Residential	67	67	125	127	126	126	125	126	124	124
Commercial	607	609	536	526	528	529	530	523	506	506
Industrial	4	4	4	4	3	3	4	4	4	4
Government	72	72	73	71	70	71	69	71	65	65
Other	3	3	2	2	2	3	5	5	7	7
Total	3,721	3,736	3,750	3,744	3,737	3,735	3,730	3,695	3,641	3,644

Customer Type	Demand 2001(ccf)	Demand 2002(ccf)	Demand 2003(ccf)	Demand 2004(ccf)	Demand 2005(ccf)	Demand 2006(ccf)	Demand 2007(ccf)	Demand 2008(ccf)	Demand 2009(ccf)	Demand 2010(ccf)
Residential	756,927	760,242	767,638	768,658	767,128	765,853	764,322	756,417	748,511	749,073
Multi-Residential	129,529	129,529	241,658	245,525	243,592	243,592	241,658	243,592	239,725	239,813
Commercial	297,520	298,501	262,720	257,818	258,798	259,289	259,779	256,348	248,015	248,106
Industrial	41,073	41,073	41,073	41,073	30,805	30,805	41,073	41,073	41,073	41,781
Government	103,022	103,022	104,453	101,591	100,160	101,591	98,729	101,591	93,006	93,475
Other	561	561	374	374	374	561	936	936	1,310	1,311
Unaccounted	112,381	112,834	113,257	113,076	112,864	112,804	112,653	111,596	109,965	110,050
Total	1,441,013	1,445,761	1,531,172	1,528,115	1,513,721	1,514,494	1,519,150	1,511,551	1,481,604	1,483,609

Customer Type	Demand 2001(AF)	Demand 2002(AF)	Demand 2003(AF)	Demand 2004(AF)	Demand 2005(AF)	Demand 2006(AF)	Demand 2007(AF)	Demand 2008(AF)	Demand 2009(AF)	Demand 2010(AF)
Residential	1,738	1,745	1,762	1,765	1,761	1,758	1,755	1,737	1,718	1,720
Multi-Residential	297	297	555	564	559	559	555	559	550	551
Commercial	683	685	603	592	594	595	596	588	569	570
Industrial	94	94	94	94	71	71	94	94	94	96
Government	237	237	240	233	230	233	227	233	214	215
Other	1	1	1	1	1	1	2	2	3	3
Unaccounted	258	259	260	260	259	259	259	256	252	253
Total	3,308	3,319	3,515	3,508	3,475	3,477	3,488	3,470	3,401	3,406

**California Water Service Company - Marysville District
Water Supply and Demand Analysis and Projections**

Scenario #2: Based on Maintaining Growth at the

Adjusted Historical Annual Growth and

2010's Projections

- Low
 - Average
 - High
- Demand per Service for each Customer Class.

Customer Type	Projected Services 2011	Projected Services 2012	Projected Services 2013	Projected Services 2014	Projected Services 2015	Projected Services 2016	Projected Services 2017	Projected Services 2018	Projected Services 2019	Projected Services 2020
Residential	2,939	2,942	2,944	2,946	2,948	2,950	2,953	2,955	2,957	2,959
Multi-Residential	124	124	124	124	124	124	124	124	124	124
Commercial	506	507	507	507	507	507	507	508	508	508
Industrial	4	4	4	4	4	5	5	5	5	5
Government	66	66	66	67	67	67	68	68	68	69
Other	7	7	7	7	7	7	7	7	7	7
Total	3,647	3,650	3,652	3,655	3,658	3,661	3,664	3,667	3,670	3,672

Customer Type	Demand 2011(ccf)	Demand 2012(ccf)	Demand 2013(ccf)	Demand 2014(ccf)	Demand 2015(ccf)	Demand 2016(ccf)	Demand 2017(ccf)	Demand 2018(ccf)	Demand 2019(ccf)	Demand 2020(ccf)
Residential	749,636	750,200	750,764	751,328	751,893	752,458	753,024	753,590	754,156	754,723
Multi-Residential	239,900	239,988	240,076	240,163	240,251	240,339	240,427	240,515	240,603	240,691
Commercial	248,197	248,287	248,378	248,469	248,560	248,650	248,741	248,832	248,923	249,014
Industrial	42,501	43,234	43,979	44,737	45,508	46,293	47,091	47,902	48,728	49,568
Government	93,947	94,421	94,898	95,377	95,859	96,343	96,829	97,318	97,809	98,303
Other	1,311	1,312	1,312	1,313	1,313	1,314	1,314	1,314	1,315	1,315
Unaccounted	110,136	110,222	110,308	110,394	110,481	110,567	110,654	110,741	110,828	110,915
Total	1,485,629	1,487,664	1,489,715	1,491,782	1,493,865	1,495,964	1,498,080	1,500,212	1,502,362	1,504,529

Customer Type	Demand 2011(AF)	Demand 2012(AF)	Demand 2013(AF)	Demand 2014(AF)	Demand 2015(AF)	Demand 2016(AF)	Demand 2017(AF)	Demand 2018(AF)	Demand 2019(AF)	Demand 2020(AF)
Residential	1,721	1,722	1,724	1,725	1,726	1,727	1,729	1,730	1,731	1,733
Multi-Residential	551	551	551	551	552	552	552	552	552	553
Commercial	570	570	570	570	571	571	571	571	571	572
Industrial	98	99	101	103	104	106	108	110	112	114
Government	216	217	218	219	220	221	222	223	225	226
Other	3	3	3	3	3	3	3	3	3	3
Unaccounted	253	253	253	253	254	254	254	254	254	255
Total	3,411	3,415	3,420	3,425	3,429	3,434	3,439	3,444	3,449	3,454

California Water Service Company - Marysville District

Water Supply and Demand Analysis and Projections

Worksheet 11

Scenario #2: Based on Maintaining Growth at the

Adjusted
Historical Annual Growth and

Low
 Average
 High

2020's Projections
 Demand per Service for each Customer Class.

Customer Type	Projected Services 2021	Projected Services 2022	Projected Services 2023	Projected Services 2024	Projected Services 2025	Projected Services 2026	Projected Services 2027	Projected Services 2028	Projected Services 2029	Projected Services 2030
Residential	2,962	2,964	2,966	2,968	2,971	2,973	2,975	2,977	2,979	2,982
Multi-Residential	125	125	125	125	125	125	125	125	125	125
Commercial	508	508	509	509	509	509	509	510	510	510
Industrial	5	5	5	5	5	5	5	6	6	6
Government	69	69	70	70	70	71	71	72	72	72
Other	7	7	7	7	7	7	7	7	7	7
Total	3,675	3,678	3,681	3,684	3,687	3,690	3,693	3,696	3,699	3,702

Customer Type	Demand 2021(ccf)	Demand 2022(ccf)	Demand 2023(ccf)	Demand 2024(ccf)	Demand 2025(ccf)	Demand 2026(ccf)	Demand 2027(ccf)	Demand 2028(ccf)	Demand 2029(ccf)	Demand 2030(ccf)
Residential	755,291	755,858	756,427	756,995	757,564	758,134	758,704	759,274	759,845	760,416
Multi-Residential	240,779	240,867	240,955	241,043	241,131	241,219	241,307	241,395	241,484	241,572
Commercial	249,105	249,196	249,287	249,379	249,470	249,561	249,652	249,743	249,835	249,926
Industrial	50,423	51,292	52,176	53,075	53,990	54,921	55,868	56,831	57,810	58,807
Government	98,799	99,298	99,799	100,303	100,809	101,318	101,830	102,344	102,860	103,380
Other	1,316	1,316	1,317	1,317	1,318	1,318	1,319	1,319	1,320	1,320
Unaccounted	111,002	111,089	111,177	111,265	111,352	111,440	111,529	111,617	111,705	111,794
Total	1,506,714	1,508,917	1,511,138	1,513,377	1,515,635	1,517,912	1,520,208	1,522,523	1,524,859	1,527,215

Customer Type	Demand 2021(AF)	Demand 2022(AF)	Demand 2023(AF)	Demand 2024(AF)	Demand 2025(AF)	Demand 2026(AF)	Demand 2027(AF)	Demand 2028(AF)	Demand 2029(AF)	Demand 2030(AF)
Residential	1,734	1,735	1,737	1,738	1,739	1,740	1,742	1,743	1,744	1,746
Multi-Residential	553	553	553	553	554	554	554	554	554	555
Commercial	572	572	572	572	573	573	573	573	574	574
Industrial	116	118	120	122	124	126	128	130	133	135
Government	227	228	229	230	231	233	234	235	236	237
Other	3	3	3	3	3	3	3	3	3	3
Unaccounted	255	255	255	255	256	256	256	256	256	257
Total	3,459	3,464	3,469	3,474	3,479	3,485	3,490	3,495	3,501	3,506

California Water Service Company - Marysville District
Water Supply and Demand Analysis and Projections

Scenario #2: Based on Maintaining Growth at the

Adjusted Historical Annual Growth and

2030's Projections

- Low
 Average
 High
 Demand per Service for each Customer Class.

Customer Type	Projected Services 2031	Projected Services 2032	Projected Services 2033	Projected Services 2034	Projected Services 2035	Projected Services 2036	Projected Services 2037	Projected Services 2038	Projected Services 2039	Projected Services 2040
Residential	2,984	2,986	2,988	2,991	2,993	2,995	2,997	3,000	3,002	3,004
Multi-Residential	125	125	125	125	125	125	125	125	125	125
Commercial	510	510	510	511	511	511	511	511	512	512
Industrial	6	6	6	6	6	6	6	7	7	7
Government	73	73	73	74	74	74	75	75	76	76
Other	7	7	7	7	7	7	7	7	7	7
Total	3,705	3,707	3,710	3,713	3,716	3,719	3,722	3,725	3,728	3,731

Customer Type	Demand 2031(ccf)	Demand 2032(ccf)	Demand 2033(ccf)	Demand 2034(ccf)	Demand 2035(ccf)	Demand 2036(ccf)	Demand 2037(ccf)	Demand 2038(ccf)	Demand 2039(ccf)	Demand 2040(ccf)
Residential	760,988	761,560	762,132	762,705	763,278	763,852	764,426	765,001	765,576	766,152
Multi-Residential	241,660	241,749	241,837	241,925	242,014	242,102	242,191	242,279	242,368	242,456
Commercial	250,017	250,109	250,200	250,292	250,383	250,475	250,566	250,658	250,749	250,841
Industrial	59,821	60,852	61,901	62,968	64,053	65,157	66,281	67,423	68,585	69,768
Government	103,902	104,426	104,953	105,483	106,016	106,551	107,089	107,629	108,173	108,719
Other	1,321	1,321	1,322	1,322	1,323	1,323	1,324	1,324	1,325	1,325
Unaccounted	111,883	111,972	112,061	112,150	112,239	112,329	112,419	112,509	112,599	112,689
Total	1,529,591	1,531,988	1,534,406	1,536,845	1,539,306	1,541,789	1,544,295	1,546,823	1,549,375	1,551,949

Customer Type	Demand 2031(AF)	Demand 2032(AF)	Demand 2033(AF)	Demand 2034(AF)	Demand 2035(AF)	Demand 2036(AF)	Demand 2037(AF)	Demand 2038(AF)	Demand 2039(AF)	Demand 2040(AF)
Residential	1,747	1,748	1,750	1,751	1,752	1,754	1,755	1,756	1,758	1,759
Multi-Residential	555	555	555	555	556	556	556	556	556	557
Commercial	574	574	574	575	575	575	575	575	576	576
Industrial	137	140	142	145	147	150	152	155	157	160
Government	239	240	241	242	243	245	246	247	248	250
Other	3	3	3	3	3	3	3	3	3	3
Unaccounted	257	257	257	257	258	258	258	258	258	259
Total	3,511	3,517	3,523	3,528	3,534	3,539	3,545	3,551	3,557	3,563

California Water Service Company - Marysville District

Water Supply and Demand Analysis and Projections

Worksheet 12

Scenario #3: Based on Maintaining Growth at the Adjusted Historical Annual Growth and Low
 Average Demand per Service for each Customer Class.
 High

Summary of Historical Growth Rate from Worksheet 2			
Customer Type	Adjusted Historical Growth Rate	Individual Growth Rate Selected	Notes
Single Family Residential	0.075%	0.075%	Historical Growth Rate Used
Multi Family Residential	4.223%	0.037%	Overall growth rate assumed
Commercial	-0.684%	0.037%	Overall growth rate assumed
Industrial	1.724%	1.724%	Historical Growth Rate Used
Government	0.505%	0.505%	Historical Growth Rate Used
Other	9.426%	0.037%	Overall growth rate assumed
Overall	0.037%	0.079%	

Summary of Maximum Demand per Service from Worksheets 5 and 6									
Demand/Serv. Units	Multi-Residential			Commercial	Industrial	Government	Total Other	Unaccounted Total Serv.	Combined Demand/Serv.
	Residential	(service)	(unit)						
Gal/Service/Yr	223,965	1,608,220	77,605	383,531	9,598,754	1,019,482	369,912	25,751	321,881
AF/Service/Yr	0.687	4.935	0.238	1.177	29.457	3.129	1.135	0.079	0.988
Gal/Service/Day	614	4,406	213	1,051	26,298	2,793	1,013	71	882

California Water Service Company - Marysville District

Water Supply and Demand Analysis and Projections

Worksheet 12

30-year projection Summary

Scenario #3: Based on Maintaining Growth at the

Adjusted
Historical Annual Growth and Low Average High

Demand per Service for each Customer Class.

Customer Type	Projected Services 2010	Projected Services 2015	Projected Services 2020	Projected Services 2025	Projected Services 2030	Projected Services 2035	Projected Services 2040	Services projected to be added from 2010 - 2040
Single Family Residential	2,937	2,948	2,959	2,971	2,982	2,993	3,004	67
Multi Family Residential	124	124	124	125	125	125	125	1
Commercial	506	507	508	509	510	511	512	6
Industrial	4	4	5	5	6	6	7	3
Government	65	67	69	70	72	74	76	11
Other	7	7	7	7	7	7	7	0
Total	3,644	3,658	3,672	3,687	3,702	3,716	3,731	87

Customer Type	Projected Demand 2010 (ccf)	Projected Demand 2015 (ccf)	Projected Demand 2020 (ccf)	Projected Demand 2025 (ccf)	Projected Demand 2030 (ccf)	Projected Demand 2035 (ccf)	Projected Demand 2040 (ccf)	Projected demand to be added from 2010 - 2040 (ccf)
Single Family Residential	879,389	882,699	886,022	889,357	892,705	896,065	899,438	20,049
Multi Family Residential	266,681	267,169	267,657	268,147	268,637	269,129	269,621	2,940
Commercial	259,523	259,998	260,473	260,950	261,427	261,905	262,384	2,861
Industrial	52,211	56,869	61,943	67,469	73,488	80,044	87,185	34,973
Government	89,032	91,302	93,630	96,017	98,466	100,976	103,551	14,519
Other	3,463	3,469	3,475	3,482	3,488	3,495	3,501	38
Unaccounted	125,433	125,923	126,418	126,917	127,420	127,928	128,440	3,008
Total	1,675,732	1,687,429	1,699,619	1,712,338	1,725,631	1,739,541	1,754,120	78,388

Customer Type	Projected Demand 2010 (AF)	Projected Demand 2015 (AF)	Projected Demand 2020 (AF)	Projected Demand 2025 (AF)	Projected Demand 2030 (AF)	Projected Demand 2035 (AF)	Projected Demand 2040 (AF)	Projected demand to be added from 2010 - 2040 (AF)
Single Family Residential	2,019	2,026	2,034	2,042	2,049	2,057	2,065	46
Multi Family Residential	612	613	614	616	617	618	619	7
Commercial	596	597	598	599	600	601	602	7
Industrial	120	131	142	155	169	184	200	80
Government	204	210	215	220	226	232	238	33
Other	8	8	8	8	8	8	8	0
Unaccounted	288	289	290	291	293	294	295	7
Total	3,847	3,874	3,902	3,931	3,962	3,993	4,027	180
	3,559	3,585	3,612	3,640	3,669	3,700	3,732	

California Water Service Company - Marysville District
Water Supply and Demand Analysis and Projections

2000's Projections

Scenario #1: Based on Maintaining Growth at the

Adjusted Annual Growth and
 Historical

- Low
 - Average
 - High
- Demand per Service for each Customer Class.

Customer Type	Actual Services 2001	Actual Services 2002	Actual Services 2003	Actual Services 2004	Actual Services 2005	Actual Services 2006	Actual Services 2007	Actual Services 2008	Actual Services 2009	Projected Services 2010
Residential	2,968	2,981	3,010	3,014	3,008	3,003	2,997	2,966	2,935	2,937
Multi-Residential	67	67	125	127	126	126	125	126	124	124
Commercial	607	609	536	526	528	529	530	523	506	506
Industrial	4	4	4	4	3	3	4	4	4	4
Government	72	72	73	71	70	71	69	71	65	65
Other	3	3	2	2	2	3	5	5	7	7
Total	3,721	3,736	3,750	3,744	3,737	3,735	3,730	3,695	3,641	3,644

Customer Type	Demand 2001(ccf)	Demand 2002(ccf)	Demand 2003(ccf)	Demand 2004(ccf)	Demand 2005(ccf)	Demand 2006(ccf)	Demand 2007(ccf)	Demand 2008(ccf)	Demand 2009(ccf)	Demand 2010(ccf)
Residential	888,608	892,501	901,183	902,381	900,584	899,087	897,291	888,010	878,728	879,389
Multi-Residential	144,041	144,041	268,734	273,033	270,883	270,883	268,734	270,883	266,584	266,681
Commercial	311,212	312,237	274,810	269,682	270,708	271,221	271,733	268,144	259,428	259,523
Industrial	51,326	51,326	51,326	51,326	38,495	38,495	51,326	51,326	51,326	52,211
Government	98,125	98,125	99,488	96,762	95,399	96,762	94,036	96,762	88,585	89,032
Other	1,483	1,483	989	989	989	1,483	2,472	2,472	3,461	3,463
Unaccounted	128,089	128,605	129,087	128,881	128,640	128,571	128,399	127,194	125,335	125,433
Total	1,622,885	1,628,319	1,725,616	1,723,054	1,705,698	1,706,502	1,713,992	1,704,792	1,673,448	1,675,732

Customer Type	Demand 2001(AF)	Demand 2002(AF)	Demand 2003(AF)	Demand 2004(AF)	Demand 2005(AF)	Demand 2006(AF)	Demand 2007(AF)	Demand 2008(AF)	Demand 2009(AF)	Demand 2010(AF)
Residential	2,040	2,049	2,069	2,072	2,067	2,064	2,060	2,039	2,017	2,019
Multi-Residential	331	331	617	627	622	622	617	622	612	612
Commercial	714	717	631	619	621	623	624	616	596	596
Industrial	118	118	118	118	88	88	118	118	118	120
Government	225	225	228	222	219	222	216	222	203	204
Other	3	3	2	2	2	3	6	6	8	8
Unaccounted	294	295	296	296	295	295	295	292	288	288
Total	3,726	3,738	3,961	3,956	3,916	3,918	3,935	3,914	3,842	3,847

California Water Service Company - Marysville District

Water Supply and Demand Analysis and Projections

Worksheet 12

2010's Projections

Scenario #1: Based on Maintaining Growth at the

Adjusted
Historical Annual Growth and Low Average High

Demand per Service for each Customer Class.

Customer Type	Projected Services 2011	Projected Services 2012	Projected Services 2013	Projected Services 2014	Projected Services 2015	Projected Services 2016	Projected Services 2017	Projected Services 2018	Projected Services 2019	Projected Services 2020
Residential	2,939	2,942	2,944	2,946	2,948	2,950	2,953	2,955	2,957	2,959
Multi-Residential	124	124	124	124	124	124	124	124	124	124
Commercial	506	507	507	507	507	507	507	508	508	508
Industrial	4	4	4	4	4	5	5	5	5	5
Government	66	66	66	67	67	67	68	68	68	69
Other	7	7	7	7	7	7	7	7	7	7
Total	3,647	3,650	3,652	3,655	3,658	3,661	3,664	3,667	3,670	3,672

Customer Type	Demand 2011(ccf)	Demand 2012(ccf)	Demand 2013(ccf)	Demand 2014(ccf)	Demand 2015(ccf)	Demand 2016(ccf)	Demand 2017(ccf)	Demand 2018(ccf)	Demand 2019(ccf)	Demand 2020(ccf)
Residential	880,050	880,711	881,374	882,036	882,699	883,363	884,027	884,691	885,356	886,022
Multi-Residential	266,779	266,876	266,974	267,071	267,169	267,266	267,364	267,462	267,560	267,657
Commercial	259,618	259,713	259,808	259,903	259,998	260,093	260,188	260,283	260,378	260,473
Industrial	53,111	54,027	54,958	55,905	56,869	57,849	58,847	59,861	60,893	61,943
Government	89,481	89,933	90,387	90,843	91,302	91,763	92,226	92,692	93,160	93,630
Other	3,464	3,465	3,467	3,468	3,469	3,470	3,472	3,473	3,474	3,475
Unaccounted	125,531	125,628	125,727	125,825	125,923	126,022	126,121	126,220	126,319	126,418
Total	1,678,034	1,680,354	1,682,693	1,685,052	1,687,429	1,689,827	1,692,244	1,694,682	1,697,140	1,699,619

Customer Type	Demand 2011(AF)	Demand 2012(AF)	Demand 2013(AF)	Demand 2014(AF)	Demand 2015(AF)	Demand 2016(AF)	Demand 2017(AF)	Demand 2018(AF)	Demand 2019(AF)	Demand 2020(AF)
Residential	2,020	2,022	2,023	2,025	2,026	2,028	2,029	2,031	2,033	2,034
Multi-Residential	612	613	613	613	613	614	614	614	614	614
Commercial	596	596	596	597	597	597	597	598	598	598
Industrial	122	124	126	128	131	133	135	137	140	142
Government	205	206	208	209	210	211	212	213	214	215
Other	8	8	8	8	8	8	8	8	8	8
Unaccounted	288	288	289	289	289	289	290	290	290	290
Total	3,852	3,858	3,863	3,868	3,874	3,879	3,885	3,890	3,896	3,902

California Water Service Company - Marysville District
Water Supply and Demand Analysis and Projections

2020's Projections

Scenario #1: Based on Maintaining Growth at the

Adjusted Historical Annual Growth and

- Low
 Average
 High
 Demand per Service for each Customer Class.

Customer Type	Projected Services 2021	Projected Services 2022	Projected Services 2023	Projected Services 2024	Projected Services 2025	Projected Services 2026	Projected Services 2027	Projected Services 2028	Projected Services 2029	Projected Services 2030
Residential	2,962	2,964	2,966	2,968	2,971	2,973	2,975	2,977	2,979	2,982
Multi-Residential	125	125	125	125	125	125	125	125	125	125
Commercial	508	508	509	509	509	509	509	510	510	510
Industrial	5	5	5	5	5	5	5	6	6	6
Government	69	69	70	70	70	71	71	72	72	72
Other	7	7	7	7	7	7	7	7	7	7
Total	3,675	3,678	3,681	3,684	3,687	3,690	3,693	3,696	3,699	3,702

Customer Type	Demand 2021(ccf)	Demand 2022(ccf)	Demand 2023(ccf)	Demand 2024(ccf)	Demand 2025(ccf)	Demand 2026(ccf)	Demand 2027(ccf)	Demand 2028(ccf)	Demand 2029(ccf)	Demand 2030(ccf)
Residential	886,688	887,354	888,021	888,689	889,357	890,026	890,695	891,364	892,034	892,705
Multi-Residential	267,755	267,853	267,951	268,049	268,147	268,245	268,343	268,441	268,539	268,637
Commercial	260,569	260,664	260,759	260,854	260,950	261,045	261,141	261,236	261,332	261,427
Industrial	63,010	64,097	65,201	66,325	67,469	68,632	69,815	71,018	72,242	73,488
Government	94,103	94,578	95,055	95,535	96,017	96,502	96,989	97,479	97,971	98,466
Other	3,477	3,478	3,479	3,481	3,482	3,483	3,484	3,486	3,487	3,488
Unaccounted	126,517	126,617	126,717	126,817	126,917	127,017	127,118	127,218	127,319	127,420
Total	1,702,119	1,704,641	1,707,184	1,709,750	1,712,338	1,714,950	1,717,584	1,720,242	1,722,924	1,725,631

Customer Type	Demand 2021(AF)	Demand 2022(AF)	Demand 2023(AF)	Demand 2024(AF)	Demand 2025(AF)	Demand 2026(AF)	Demand 2027(AF)	Demand 2028(AF)	Demand 2029(AF)	Demand 2030(AF)
Residential	2,036	2,037	2,039	2,040	2,042	2,043	2,045	2,046	2,048	2,049
Multi-Residential	615	615	615	615	616	616	616	616	616	617
Commercial	598	598	599	599	599	599	600	600	600	600
Industrial	145	147	150	152	155	158	160	163	166	169
Government	216	217	218	219	220	222	223	224	225	226
Other	8	8	8	8	8	8	8	8	8	8
Unaccounted	290	291	291	291	291	292	292	292	292	293
Total	3,908	3,913	3,919	3,925	3,931	3,937	3,943	3,949	3,955	3,962

California Water Service Company - Marysville District
Water Supply and Demand Analysis and Projections

2030's Projections

Scenario #1: Based on Maintaining Growth at the

Adjusted Historical Annual Growth and

- Low
 Average Demand per Service for each Customer Class.
 High

Customer Type	Projected Services 2031	Projected Services 2032	Projected Services 2033	Projected Services 2034	Projected Services 2035	Projected Services 2036	Projected Services 2037	Projected Services 2038	Projected Services 2039	Projected Services 2040
Residential	2,984	2,986	2,988	2,991	2,993	2,995	2,997	3,000	3,002	3,004
Multi-Residential	125	125	125	125	125	125	125	125	125	125
Commercial	510	510	510	511	511	511	511	511	512	512
Industrial	6	6	6	6	6	6	6	7	7	7
Government	73	73	73	74	74	74	75	75	76	76
Other	7	7	7	7	7	7	7	7	7	7
Total	3,705	3,707	3,710	3,713	3,716	3,719	3,722	3,725	3,728	3,731

Customer Type	Demand 2031(ccf)	Demand 2032(ccf)	Demand 2033(ccf)	Demand 2034(ccf)	Demand 2035(ccf)	Demand 2036(ccf)	Demand 2037(ccf)	Demand 2038(ccf)	Demand 2039(ccf)	Demand 2040(ccf)
Residential	893,376	894,047	894,720	895,392	896,065	896,739	897,413	898,088	898,763	899,438
Multi-Residential	268,736	268,834	268,932	269,030	269,129	269,227	269,326	269,424	269,522	269,621
Commercial	261,523	261,618	261,714	261,809	261,905	262,001	262,097	262,192	262,288	262,384
Industrial	74,754	76,043	77,354	78,687	80,044	81,424	82,827	84,255	85,707	87,185
Government	98,963	99,462	99,964	100,469	100,976	101,486	101,998	102,513	103,031	103,551
Other	3,489	3,491	3,492	3,493	3,495	3,496	3,497	3,498	3,500	3,501
Unaccounted	127,521	127,623	127,724	127,826	127,928	128,030	128,132	128,235	128,337	128,440
Total	1,728,362	1,731,118	1,733,900	1,736,708	1,739,541	1,742,402	1,745,290	1,748,205	1,751,148	1,754,120

Customer Type	Demand 2031(AF)	Demand 2032(AF)	Demand 2033(AF)	Demand 2034(AF)	Demand 2035(AF)	Demand 2036(AF)	Demand 2037(AF)	Demand 2038(AF)	Demand 2039(AF)	Demand 2040(AF)
Residential	2,051	2,052	2,054	2,056	2,057	2,059	2,060	2,062	2,063	2,065
Multi-Residential	617	617	617	618	618	618	618	619	619	619
Commercial	600	601	601	601	601	601	602	602	602	602
Industrial	172	175	178	181	184	187	190	193	197	200
Government	227	228	229	231	232	233	234	235	237	238
Other	8	8	8	8	8	8	8	8	8	8
Unaccounted	293	293	293	293	294	294	294	294	295	295
Total	3,968	3,974	3,981	3,987	3,993	4,000	4,007	4,013	4,020	4,027

California Water Service Company - Marysville District
Water Supply and Demand Analysis and Projections

Worksheet 13

Scenario #4: Based on Maintaining Growth at the Overall
 Combined Average Annual Growth
 Historical

Summary of Historical Growth Rate from Worksheet 2			
Customer Type	Historical Growth Rate	Individual Growth Rate Selected	Notes
Single Family Residential	0.075%	0.037%	Overall growth rate assumed
Multi Family Residential	4.223%	0.037%	Overall growth rate assumed
Commercial	-0.684%	0.037%	Overall growth rate assumed
Industrial	1.724%	0.037%	Overall growth rate assumed
Government	0.505%	0.037%	Overall growth rate assumed
Other	9.426%	0.037%	Overall growth rate assumed
Overall	0.037%	0.037%	

California Water Service Company - Marysville District
Water Supply and Demand Analysis and Projections

Worksheet 13

30-year projection Summary

Scenario #4: Based on Maintaining Growth at the Overall
 Combined Average Annual Growth
 Historical

Customer Type	Projected Services 2010	Projected Services 2015	Projected Services 2020	Projected Services 2025	Projected Services 2030	Projected Services 2035	Projected Services 2040	Services projected to be added from 2010 - 2040
Single Family Residential	2,936	2,941	2,947	2,952	2,958	2,963	2,968	32
Multi Family Residential	124	124	124	125	125	125	125	1
Commercial	506	507	508	509	510	511	512	6
Industrial	4	4	4	4	4	4	4	0
Government	65	65	65	65	66	66	66	1
Other	7	7	7	7	7	7	7	0
Total	3,642	3,649	3,656	3,662	3,669	3,676	3,682	40

California Water Service Company - Marysville District
Water Supply and Demand Analysis and Projections

Worksheet 13

2000's Projections

Scenario #4: Based on Maintaining Growth at the
 Overall
 Combined Average Annual Growth
 Historical

Customer Type	Actual Services 2001	Actual Services 2002	Actual Services 2003	Actual Services 2004	Actual Services 2005	Actual Services 2006	Actual Services 2007	Actual Services 2008	Actual Services 2009	Projected Services 2010
Residential	2,968	2,981	3,010	3,014	3,008	3,003	2,997	2,966	2,935	2,936
Multi-Residential	67	67	125	127	126	126	125	126	124	124
Commercial	607	609	536	526	528	529	530	523	506	506
Industrial	4	4	4	4	3	3	4	4	4	4
Government	72	72	73	71	70	71	69	71	65	65
Other	3	3	2	2	2	3	5	5	7	7
Total	3,721	3,736	3,750	3,744	3,737	3,735	3,730	3,695	3,641	3,642

2010's Projections

Customer Type	Projected Services 2011	Projected Services 2012	Projected Services 2013	Projected Services 2014	Projected Services 2015	Projected Services 2016	Projected Services 2017	Projected Services 2018	Projected Services 2019	Projected Services 2020
Residential	2,937	2,938	2,939	2,940	2,941	2,943	2,944	2,945	2,946	2,947
Multi-Residential	124	124	124	124	124	124	124	124	124	124
Commercial	506	507	507	507	507	507	507	508	508	508
Industrial	4	4	4	4	4	4	4	4	4	4
Government	65	65	65	65	65	65	65	65	65	65
Other	7	7	7	7	7	7	7	7	7	7
Total	3,644	3,645	3,646	3,648	3,649	3,650	3,652	3,653	3,654	3,656

California Water Service Company - Marysville District
Water Supply and Demand Analysis and Projections

Worksheet 13

2020's Projections

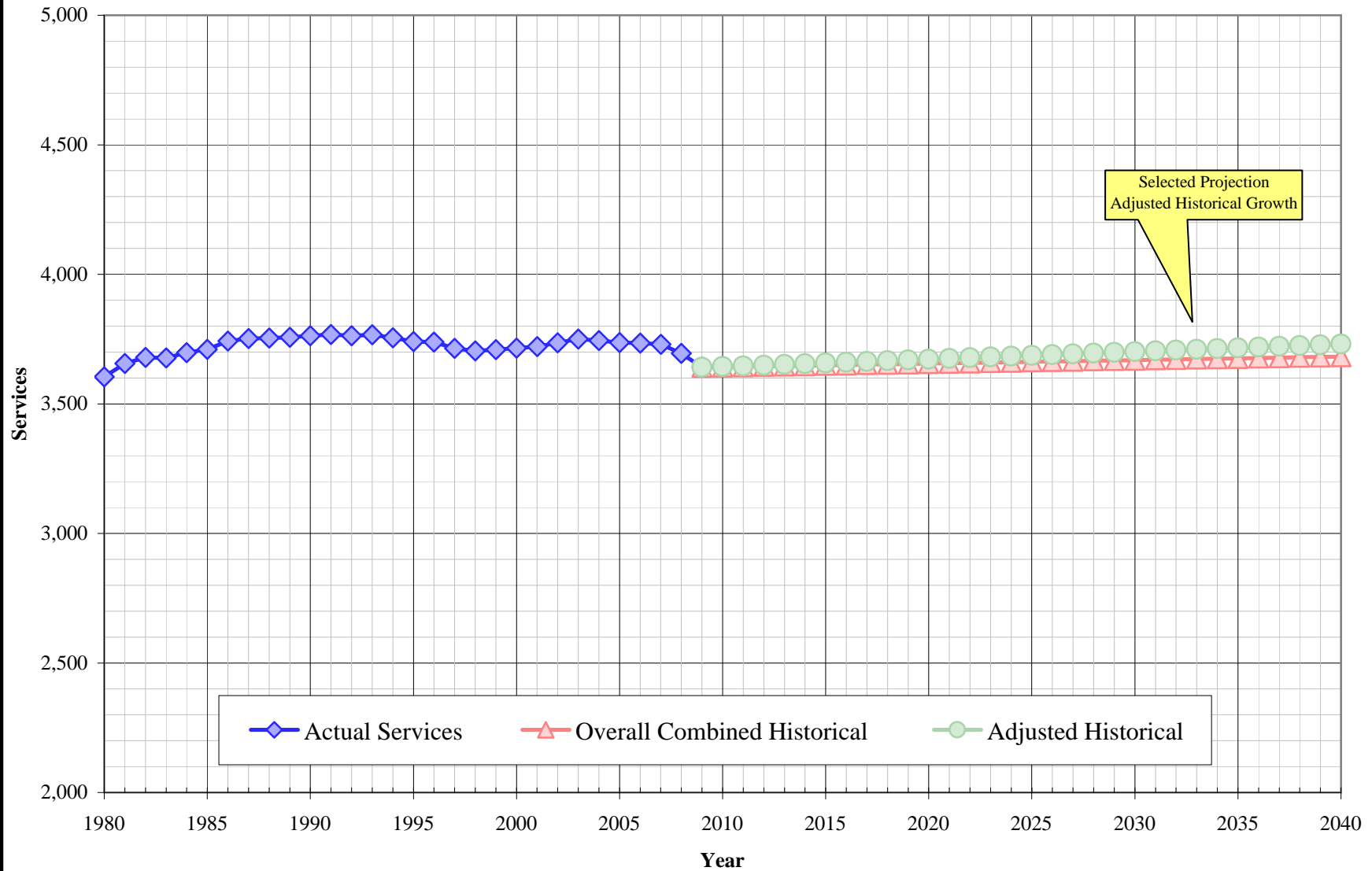
Scenario #4: Based on Maintaining Growth at the Overall
 Combined Average Annual Growth
 Historical

Customer Type	Projected Services 2021	Projected Services 2022	Projected Services 2023	Projected Services 2024	Projected Services 2025	Projected Services 2026	Projected Services 2027	Projected Services 2028	Projected Services 2029	Projected Services 2030
Residential	2,948	2,949	2,950	2,951	2,952	2,953	2,954	2,955	2,957	2,958
Multi-Residential	125	125	125	125	125	125	125	125	125	125
Commercial	508	508	509	509	509	509	509	510	510	510
Industrial	4	4	4	4	4	4	4	4	4	4
Government	65	65	65	65	65	65	65	65	65	66
Other	7	7	7	7	7	7	7	7	7	7
Total	3,657	3,658	3,660	3,661	3,662	3,664	3,665	3,666	3,668	3,669

2030's Projections

Customer Type	Projected Services 2031	Projected Services 2032	Projected Services 2033	Projected Services 2034	Projected Services 2035	Projected Services 2036	Projected Services 2037	Projected Services 2038	Projected Services 2039	Projected Services 2040
Residential	2,959	2,960	2,961	2,962	2,963	2,964	2,965	2,966	2,967	2,968
Multi-Residential	125	125	125	125	125	125	125	125	125	125
Commercial	510	510	510	511	511	511	511	511	512	512
Industrial	4	4	4	4	4	4	4	4	4	4
Government	66	66	66	66	66	66	66	66	66	66
Other	7	7	7	7	7	7	7	7	7	7
Total	3,670	3,672	3,673	3,674	3,676	3,677	3,678	3,680	3,681	3,682

Marysville District Actual and Projected Services



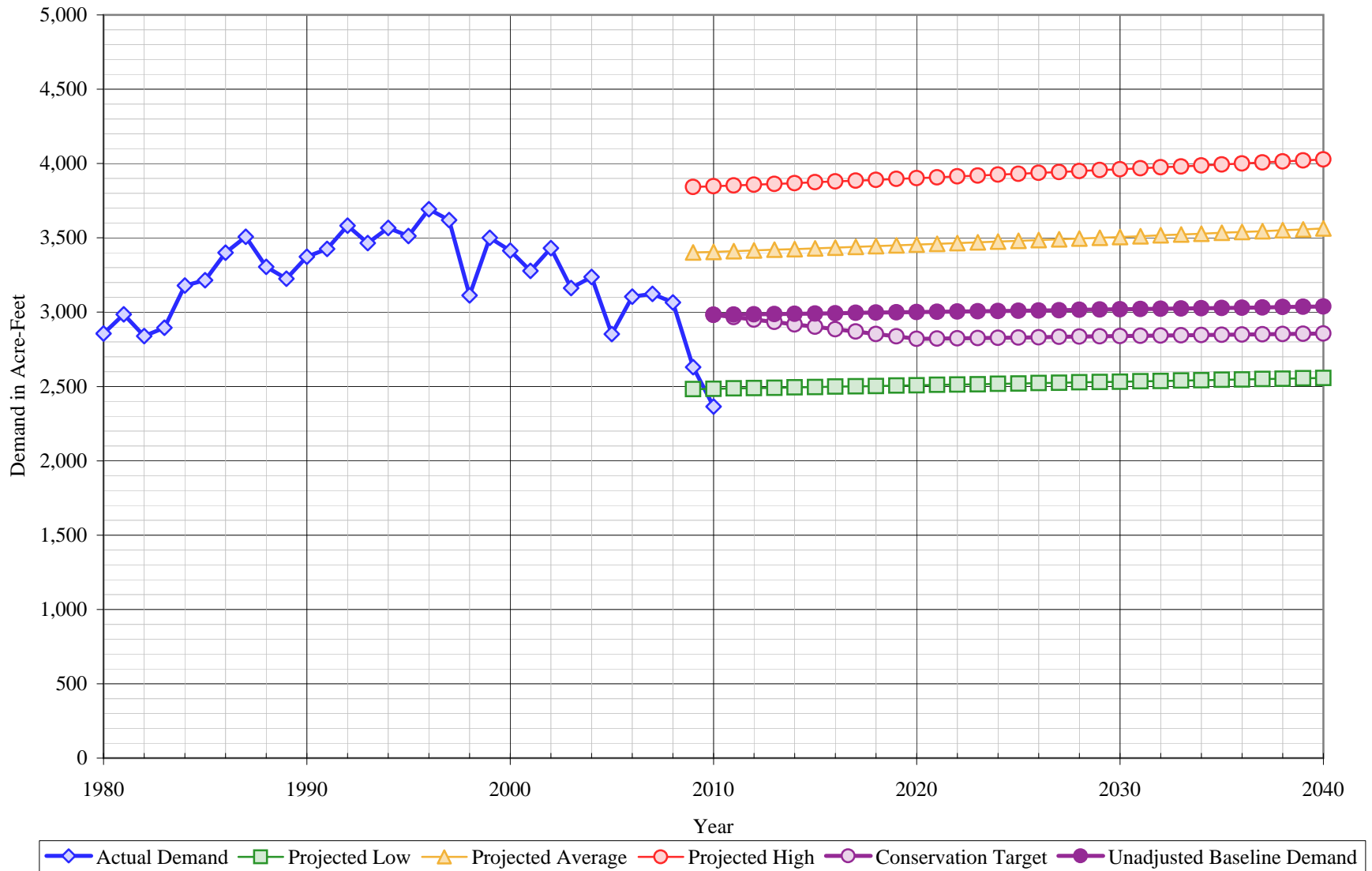
California Water Service Company - Marysville District
Water Supply and Demand Analysis and Projections
Actual & Projected Annual Average Services

Year	Actual Services	Projected Services	
		Adjusted Historical	Overall Combined Historical
1980	3,604		
1981	3,656		
1982	3,679		
1983	3,677		
1984	3,698		
1985	3,710		
1986	3,742		
1987	3,752		
1988	3,754		
1989	3,757		
1990	3,763		
1991	3,768		
1992	3,763		
1993	3,767		
1994	3,755		
1995	3,741		
1996	3,739		
1997	3,714		
1998	3,705		
1999	3,709		
2000	3,715		
2001	3,721		
2002	3,736		
2003	3,750		
2004	3,744		
2005	3,737		
2006	3,735		
2007	3,730		
2008	3,695		
2009	3,641	3,641	3,641
2010	3,645	3,644	3,642

Year	Actual Services	Projected Services	
		Adjusted Historical	Overall Combined Historical
2011		3,647	3,644
2012		3,650	3,645
2013		3,652	3,646
2014		3,655	3,648
2015		3,658	3,649
2016		3,661	3,650
2017		3,664	3,652
2018		3,667	3,653
2019		3,670	3,654
2020		3,672	3,656
2021		3,675	3,657
2022		3,678	3,658
2023		3,681	3,660
2024		3,684	3,661
2025		3,687	3,662
2026		3,690	3,664
2027		3,693	3,665
2028		3,696	3,666
2029		3,699	3,668
2030		3,702	3,669
2031		3,705	3,670
2032		3,707	3,672
2033		3,710	3,673
2034		3,713	3,674
2035		3,716	3,676
2036		3,719	3,677
2037		3,722	3,678
2038		3,725	3,680
2039		3,728	3,681
2040		3,731	3,682

Marysville District

Historical & Projected Demand



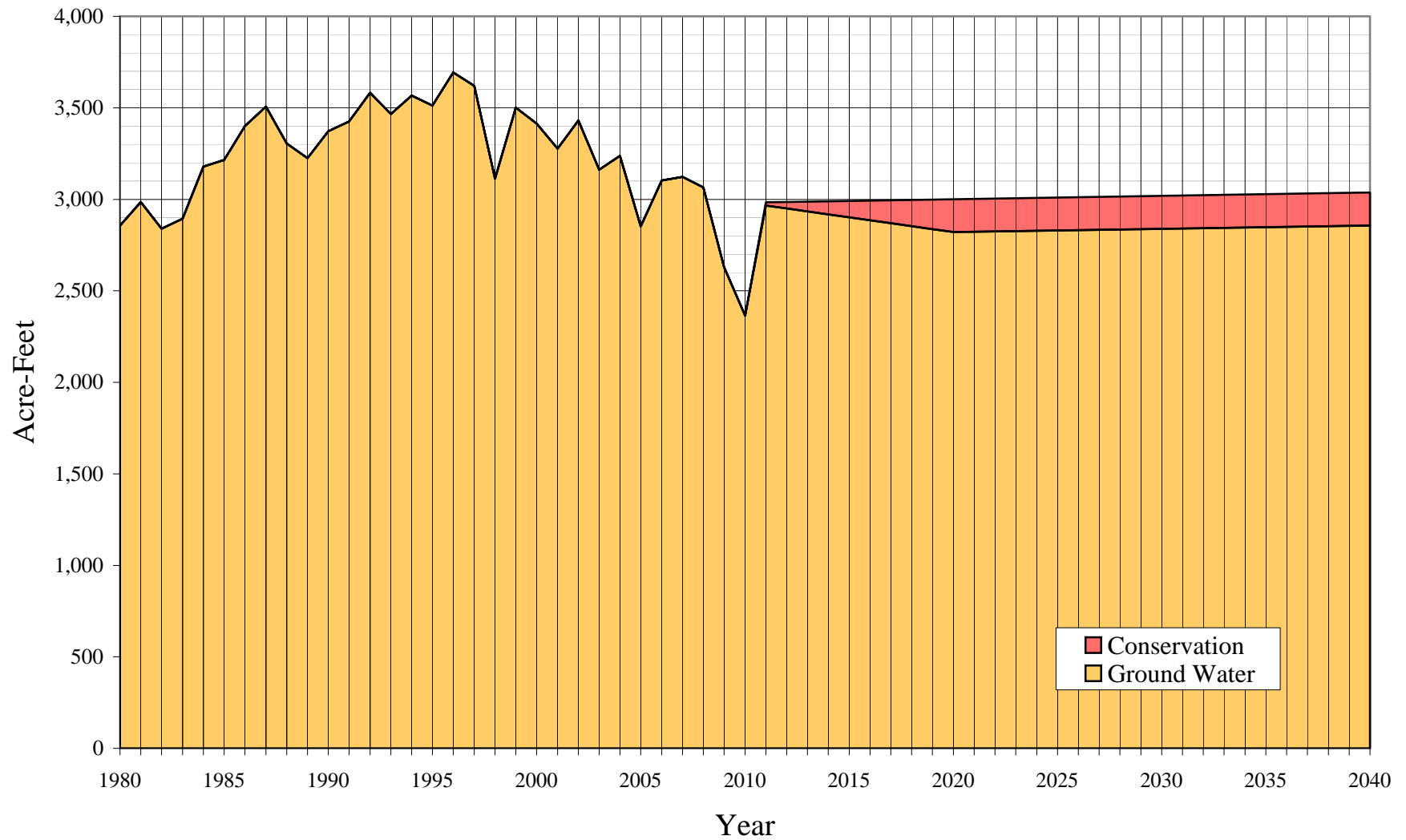
California Water Service Company - Marysville District
Water Supply and Demand Analysis and Projections
Actual & Projected Demand in Acre-Feet

Year	Actual Demand	Projected			Unadjusted Baseline Demand	Target Demand
		Low	Average	High		
1980	2,856					
1981	2,986					
1982	2,840					
1983	2,895					
1984	3,179					
1985	3,215					
1986	3,400					
1987	3,507					
1988	3,306					
1989	3,225					
1990	3,373					
1991	3,425					
1992	3,582					
1993	3,466					
1994	3,567					
1995	3,513					
1996	3,693					
1997	3,620					
1998	3,112					
1999	3,501					
2000	3,414					
2001	3,277					
2002	3,432					
2003	3,163					
2004	3,238					
2005	2,853					
2006	3,104					
2007	3,123					
2008	3,066					
2009	2,630	2,482	3,401	3,842		
2010	2,365	2,484	3,406	3,847	2,982	2,982

Year	Actual Demand	Projected			Conservation Target
		Low Demand	Average Demand	High Demand	
2011		2,487	3,411	3,852	2,966
2012		2,489	3,415	3,858	2,950
2013		2,491	3,420	3,863	2,934
2014		2,494	3,425	3,868	2,918
2015		2,496	3,429	3,874	2,902
2016		2,499	3,434	3,879	2,886
2017		2,501	3,439	3,885	2,870
2018		2,503	3,444	3,890	2,853
2019		2,506	3,449	3,896	2,837
2020		2,508	3,454	3,902	2,821
2021		2,510	3,459	3,908	2,823
2022		2,513	3,464	3,913	2,824
2023		2,515	3,469	3,919	2,826
2024		2,518	3,474	3,925	2,828
2025		2,520	3,479	3,931	2,830
2026		2,522	3,485	3,937	2,831
2027		2,525	3,490	3,943	2,833
2028		2,527	3,495	3,949	2,835
2029		2,530	3,501	3,955	2,837
2030		2,532	3,506	3,962	2,838
2031		2,535	3,511	3,968	2,840
2032		2,537	3,517	3,974	2,842
2033		2,540	3,523	3,981	2,844
2034		2,542	3,528	3,987	2,845
2035		2,545	3,534	3,993	2,847
2036		2,547	3,539	4,000	2,849
2037		2,550	3,545	4,007	2,851
2038		2,552	3,551	4,013	2,853
2039		2,555	3,557	4,020	2,854
2040		2,557	3,563	4,027	2,856

Marysville District

Historical and Projected Distribution of Demand by Source



California Water Service Company - Marysville District

Water Supply and Demand Analysis and Projections

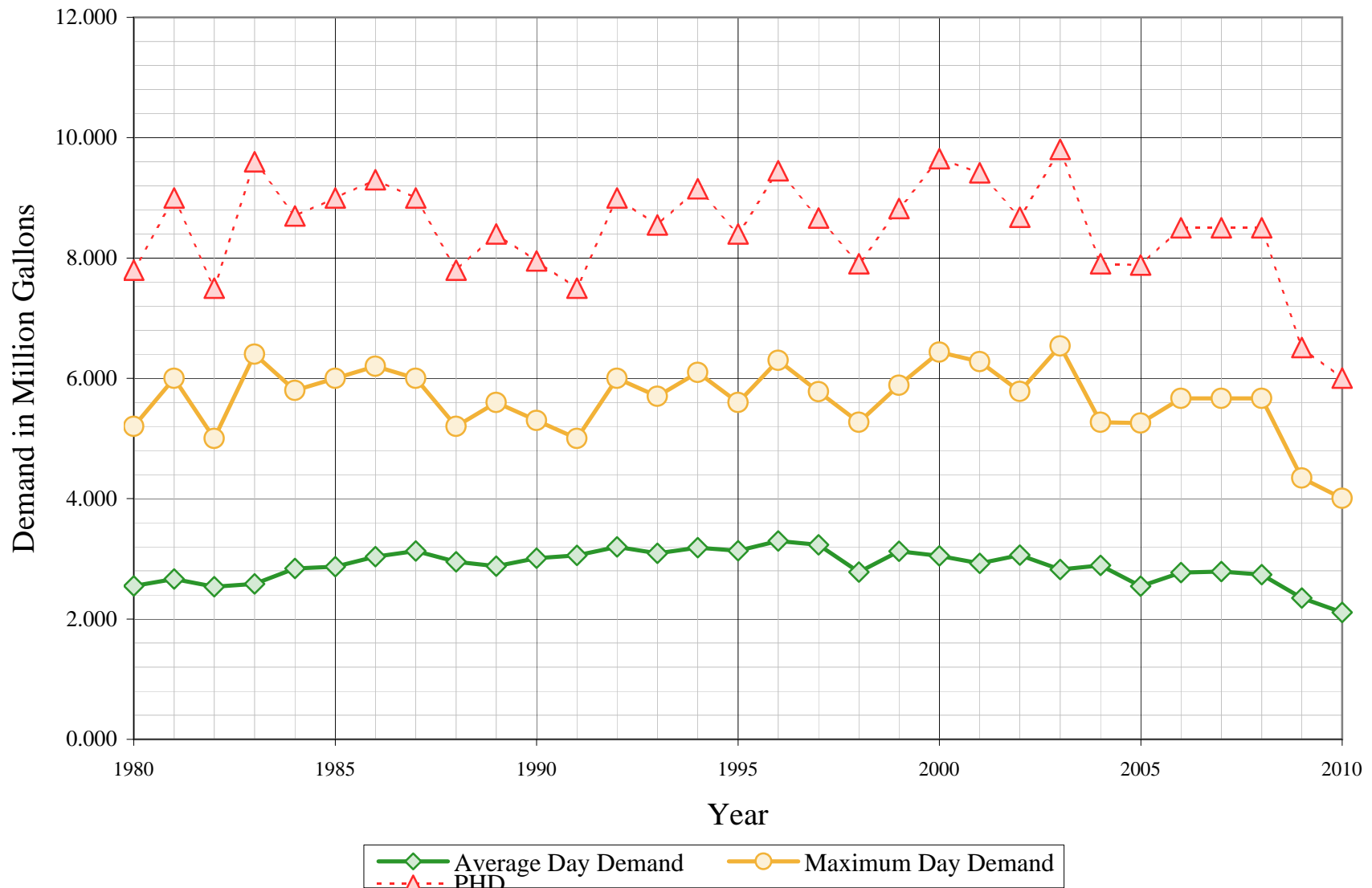
Worksheet 17

Historical and Projected Distribution of Demand by Source

Year	Purchased Water		Ground Water		Conservation		Total		Year	Purchased Water		Ground Water		Conservation		Total	
	kGal	AFY	kGal	AFY	kGal	AFY	kGal	AFY		kGal	AFY	kGal	AFY	kGal	AFY	kGal	AFY
1980	0	0	930,653	2,856			930,653	2,856									
1981	0	0	972,836	2,986			972,836	2,986	2011	0	0	972,277	2,966	5,814	18	972,277	2,984
1982	0	0	925,257	2,840			925,257	2,840	2012	0	0	972,877	2,950	11,635	36	972,877	2,986
1983	0	0	943,247	2,895			943,247	2,895	2013	0	0	973,478	2,934	17,463	54	973,478	2,987
1984	0	0	1,035,789	3,179			1,035,789	3,179	2014	0	0	974,079	2,918	23,299	72	974,079	2,989
1985	0	0	1,047,732	3,215			1,047,732	3,215	2015	0	0	974,680	2,902	29,142	89	974,680	2,991
1986	0	0	1,107,882	3,400			1,107,882	3,400	2016	0	0	975,282	2,886	34,991	107	975,282	2,993
1987	0	0	1,142,818	3,507			1,142,818	3,507	2017	0	0	975,884	2,870	40,849	125	975,884	2,995
1988	0	0	1,077,096	3,306			1,077,096	3,306	2018	0	0	976,486	2,853	46,713	143	976,486	2,997
1989	0	0	1,050,697	3,225			1,050,697	3,225	2019	0	0	977,089	2,837	52,584	161	977,089	2,999
1990	0	0	1,098,923	3,373			1,098,923	3,373	2020	0	0	977,692	2,821	58,463	179	977,692	3,000
1991	0	0	1,116,085	3,425			1,116,085	3,425	2021	0	0	978,296	2,823	58,499	180	978,296	3,002
1992	0	0	1,167,253	3,582			1,167,253	3,582	2022	0	0	978,900	2,824	58,535	180	978,900	3,004
1993	0	0	1,129,278	3,466			1,129,278	3,466	2023	0	0	979,504	2,826	58,572	180	979,504	3,006
1994	0	0	1,162,325	3,567			1,162,325	3,567	2024	0	0	980,109	2,828	58,608	180	980,109	3,008
1995	0	0	1,144,607	3,513			1,144,607	3,513	2025	0	0	980,715	2,830	58,644	180	980,715	3,010
1996	0	0	1,203,514	3,693			1,203,514	3,693	2026	0	0	981,320	2,831	58,680	180	981,320	3,012
1997	0	0	1,179,530	3,620			1,179,530	3,620	2027	0	0	981,926	2,833	58,716	180	981,926	3,013
1998	0	0	1,014,191	3,112			1,014,191	3,112	2028	0	0	982,533	2,835	58,753	180	982,533	3,015
1999	0	0	1,140,745	3,501			1,140,745	3,501	2029	0	0	983,140	2,837	58,789	180	983,140	3,017
2000	0	0	1,112,467	3,414			1,112,467	3,414	2030	0	0	983,747	2,838	58,825	181	983,747	3,019
2001	0	0	1,067,862	3,277			1,067,862	3,277	2031	0	0	984,355	2,840	58,862	181	984,355	3,021
2002	0	0	1,118,185	3,432			1,118,185	3,432	2032	0	0	984,963	2,842	58,898	181	984,963	3,023
2003	0	0	1,030,518	3,163			1,030,518	3,163	2033	0	0	985,572	2,844	58,934	181	985,572	3,025
2004	0	0	1,054,971	3,238			1,054,971	3,238	2034	0	0	986,180	2,845	58,971	181	986,180	3,026
2005	0	0	929,564	2,853			929,564	2,853	2035	0	0	986,790	2,847	59,007	181	986,790	3,028
2006	0	0	1,011,355	3,104			1,011,355	3,104	2036	0	0	987,400	2,849	59,044	181	987,400	3,030
2007	0	0	1,017,481	3,123			1,017,481	3,123	2037	0	0	988,010	2,851	59,080	181	988,010	3,032
2008	0	0	998,891	3,066			998,891	3,066	2038	0	0	988,620	2,853	59,117	181	988,620	3,034
2009	0	0	856,952	2,630			856,952	2,630	2039	0	0	989,231	2,854	59,153	182	989,231	3,036
2010	0	0	770,491	2,365			770,491	2,365	2040	0	0	989,843	2,856	59,190	182	989,843	3,038

Marysville District

Average Day, Maximum Day, & Peak Demand



California Water Service Company - Marysville District

Worksheet 18

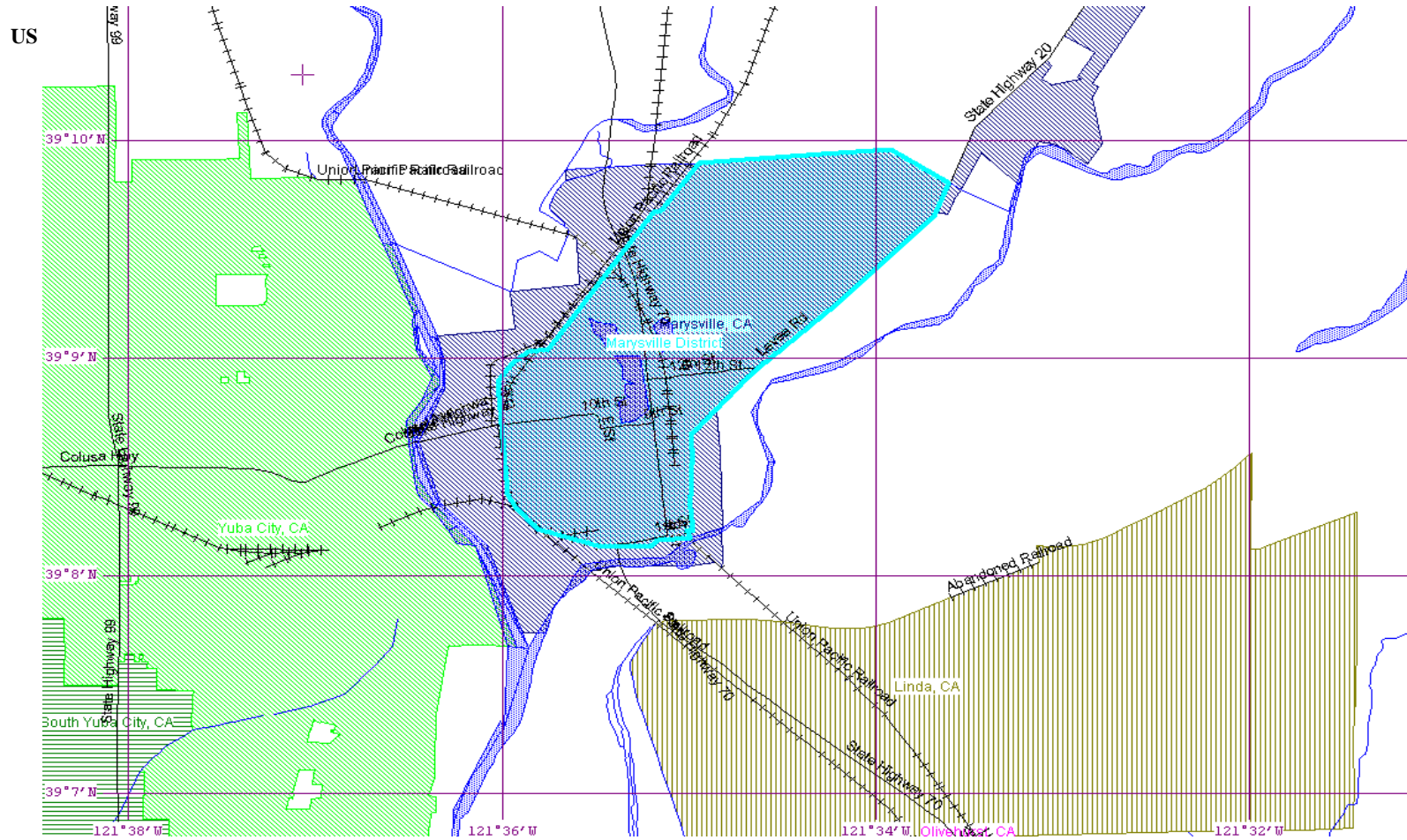
Water Supply and Demand Analysis and Projections

Historical and Projected Average Day, Maximum Day, and Peak Demand

Year	Historical Annual Demand		Average Day Demand		Maximum Day Demand		MDD ADD Ratio	Estimated Peak Hour Demand		PHD MDD Ratio	PHD ADD Ratio	Measured Peak Hour Demand		PHD MDD Ratio
	(AFY)	(MGY)	(MGD)	Per Service (GPD)	(MGD)	Per Service (GPD)		(MGD)	(GPM)			(MGD)	(GPM)	
1980	2,856	931	2,550	707	5,200	1,443	2.04	7,800	5,417	1.50	3.06			
1981	2,986	973	2,665	729	6,000	1,641	2.25	9,000	6,250	1.50	3.38			
1982	2,840	925	2,535	689	5,000	1,359	1.97	7,500	5,208	1.50	2.96			
1983	2,895	943	2,584	703	6,400	1,741	2.48	9,600	6,667	1.50	3.71			
1984	3,179	1,036	2,838	767	5,800	1,568	2.04	8,700	6,042	1.50	3.07			
1985	3,215	1,048	2,871	774	6,000	1,617	2.09	9,000	6,250	1.50	3.14			
1986	3,400	1,108	3,035	811	6,200	1,657	2.04	9,300	6,458	1.50	3.06			
1987	3,507	1,143	3,131	834	6,000	1,599	1.92	9,000	6,250	1.50	2.87			
1988	3,306	1,077	2,951	786	5,200	1,385	1.76	7,800	5,417	1.50	2.64			
1989	3,225	1,051	2,879	766	5,600	1,491	1.95	8,400	5,833	1.50	2.92			
1990	3,373	1,099	3,011	800	5,300	1,408	1.76	7,950	5,521	1.50	2.64			
1991	3,425	1,116	3,058	812	5,000	1,327	1.64	7,500	5,208	1.50	2.45			
1992	3,582	1,167	3,198	850	6,000	1,594	1.88	9,000	6,250	1.50	2.81			
1993	3,466	1,129	3,094	821	5,700	1,513	1.84	8,550	5,938	1.50	2.76			
1994	3,567	1,162	3,184	848	6,100	1,625	1.92	9,150	6,354	1.50	2.87			
1995	3,513	1,145	3,136	838	5,600	1,497	1.79	8,400	5,833	1.50	2.68			
1996	3,693	1,203	3,297	882	6,300	1,685	1.91	9,450	6,563	1.50	2.87			
1997	3,620	1,180	3,232	870	5,776	1,555	1.79	8,664	6,017	1.50	2.68			
1998	3,112	1,014	2,779	750	5,271	1,423	1.90	7,907	5,491	1.50	2.85			
1999	3,501	1,141	3,125	843	5,883	1,586	1.88	8,825	6,128	1.50	2.82			
2000	3,414	1,112	3,048	820	6,435	1,732	2.11	9,653	6,703	1.50	3.17			
2001	3,277	1,068	2,926	786	6,279	1,687	2.15	9,419	6,541	1.50	3.22			
2002	3,432	1,118	3,064	820	5,784	1,548	1.89	8,676	6,025	1.50	2.83			
2003	3,163	1,031	2,823	753	6,536	1,743	2.32	9,804	6,808	1.50	3.47			
2004	3,238	1,055	2,890	772	5,270	1,408	1.82	7,905	5,490	1.50	2.73			
2005	2,853	930	2,547	681	5,256	1,406	2.06	7,884	5,475	1.50	3.10			
2006	3,104	1,011	2,771	742	5,668	1,518	2.05	8,502	5,904	1.50	3.07			
2007	3,123	1,017	2,788	747	5,668	1,520	2.03	8,502	5,904	1.50	3.05			
2008	3,066	999	2,737	741	5,668	1,534	2.07	8,502	5,904	1.50	3.11			
2009	2,630	857	2,348	645	4,343	1,193	1.85	6,515	4,524	1.50	2.77			
2010	2,365	770	2,111	579	4,004	1,098	1.90	6,006	4,171	1.50	2.85			
5 year Average (2006-2010)			2,551	691	5,070	1,372	1.98	7,605	5,281	1.50	2.97			
10 year Average (2001-2010)			2,700	727	5,448	1,465	2.01	8,171	5,675	1.50	3.02			

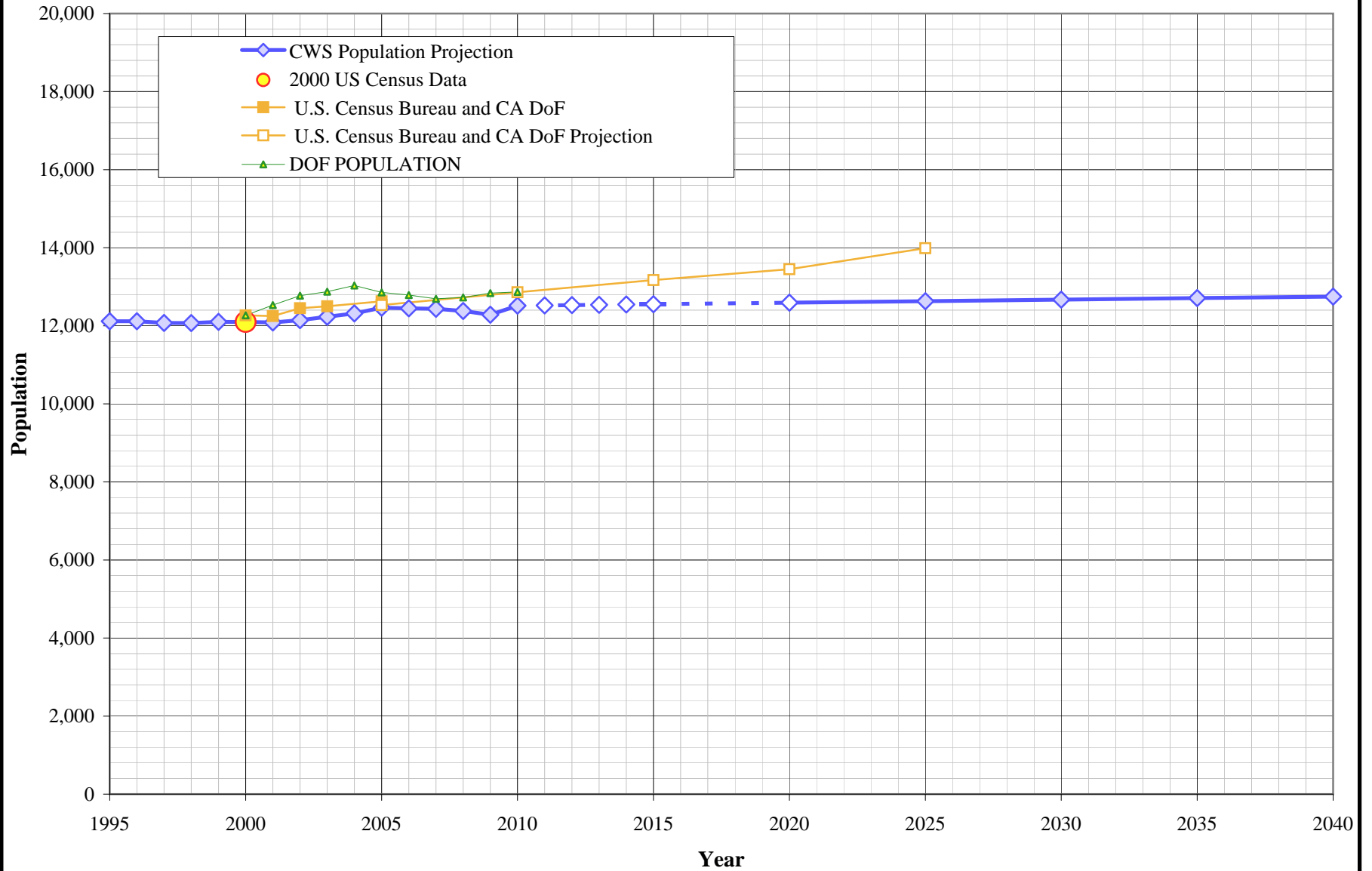
California Water Service Company - Marysville District

Water Supply and Demand Analysis and Projections



US Census 2000 Summary			
Area	Census Tract Blocks	Population	Housing Units
District	279	12,099	4,956
City of Marysville	283	12,268	4,999
Percent District of the City		98.6%	99.1%

Marysville District Population Projections



California Water Service Company - Marysville District
Water Supply and Demand Analysis and Projections

Population as of the 2000 Average Annual Services

Estimated District Population based on 2000 U.S. Census Data & Annual Service Count

District Communities Served: City of Marysville

Year	Single Family Residential Services (DU)	Multi Family Residential			Flat Rate Residential Services (DU)	Total Residential Dwelling Units	Estimated District Population
		Services	Residential Units (DU)	Unit Density			
1995	330	65	1,348	20.7	2,652	4,330	12,116
1996	340	65	1,347	20.7	2,643	4,330	12,116
1997	341	65	1,351	20.8	2,623	4,315	12,074
1998	342	66	1,354	20.5	2,618	4,314	12,071
1999	350	67	1,363	20.3	2,612	4,325	12,102
2000	352	67	1,363	20.3	2,609	4,324	12,099
2001	357	67	1,351	20.2	2,611	4,319	12,085
2002	362	67	1,359	20.3	2,619	4,340	12,144
2003	398	125	1,608	12.9	2,612	4,618	12,230
2004	423	127	1,611	12.7	2,591	4,625	12,316
2005	439	126	1,612	12.8	2,569	4,620	12,462
2006	455	126	1,610	12.8	2,548	4,613	12,446
2007	478	125	1,610	12.9	2,519	4,607	12,434
2008	525	126	1,612	12.8	2,441	4,578	12,378
2009	662	124	1,608	13.0	2,273	4,543	12,285
2010	2,937	124	1,698	13.7	0	4,635	12,515
2011	2,939	124	1,699	13.7	0	4,638	12,522
2012	2,942	124	1,699	13.7	0	4,641	12,530
2013	2,944	124	1,700	13.7	0	4,644	12,538
2014	2,946	124	1,700	13.7	0	4,647	12,546
2015	2,948	124	1,701	13.7	0	4,649	12,553
2020	2,959	124	1,704	13.7	0	4,664	12,592
2025	2,971	125	1,708	13.7	0	4,678	12,631
2030	2,982	125	1,711	13.7	0	4,693	12,670
2035	2,993	125	1,714	13.7	0	4,707	12,709
2040	3,004	125	1,718	13.7	0	4,722	12,749

US Census 2000		Calculated Persons per CWS DU	Calculated Persons per US Census Housing Unit
Population	Housing Units		

12,099	4,956	2.80	2.441
--------	-------	------	-------

2.65 <<< Service factor recalc due to reclassification

2.66 <<< Service factor recalc due to reclassification

2.70

2.70

2.70

2.70

2.70

2.70

2.70

2.70

2.70

2.70

2.70

2.70

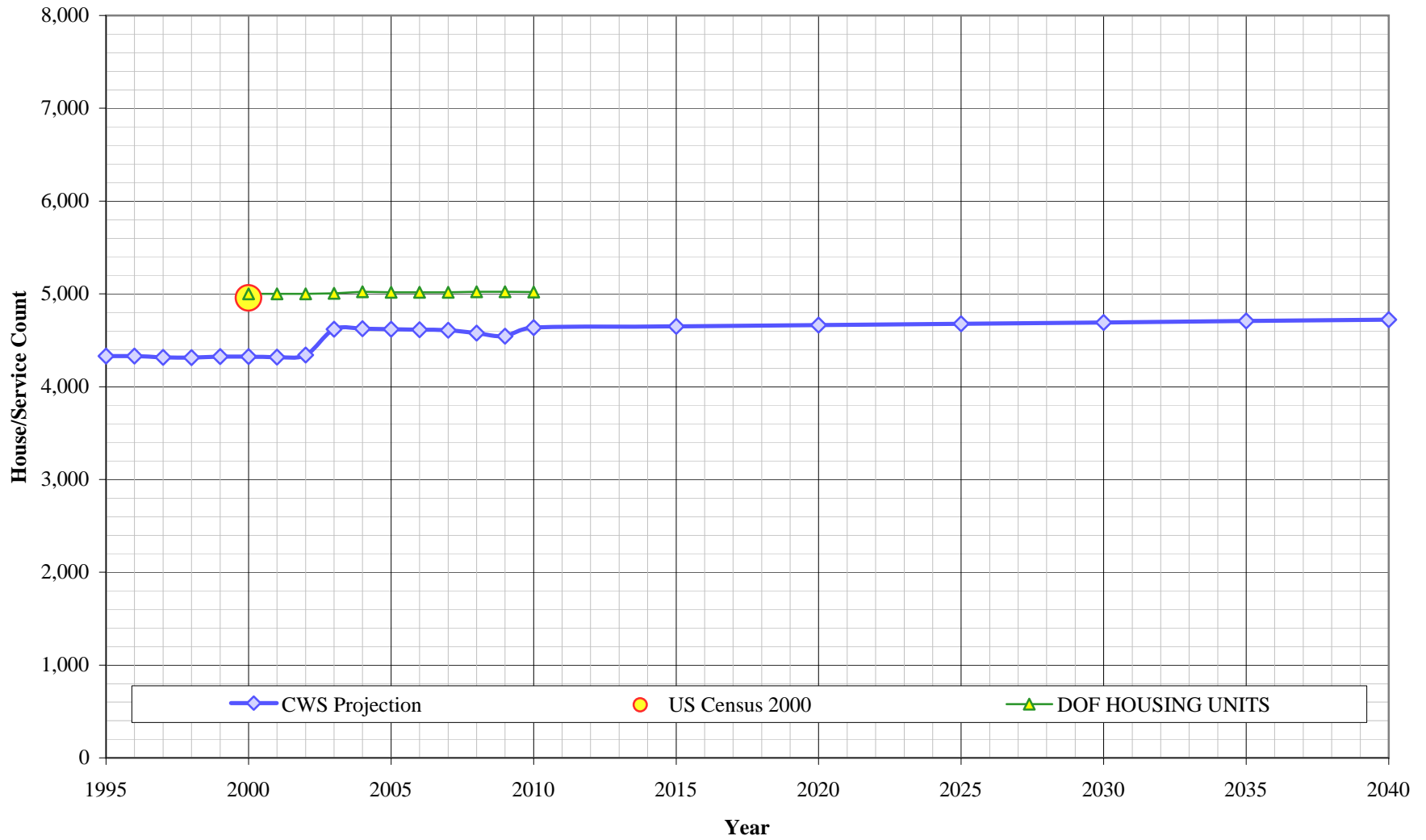
2.70

2.70

2.70

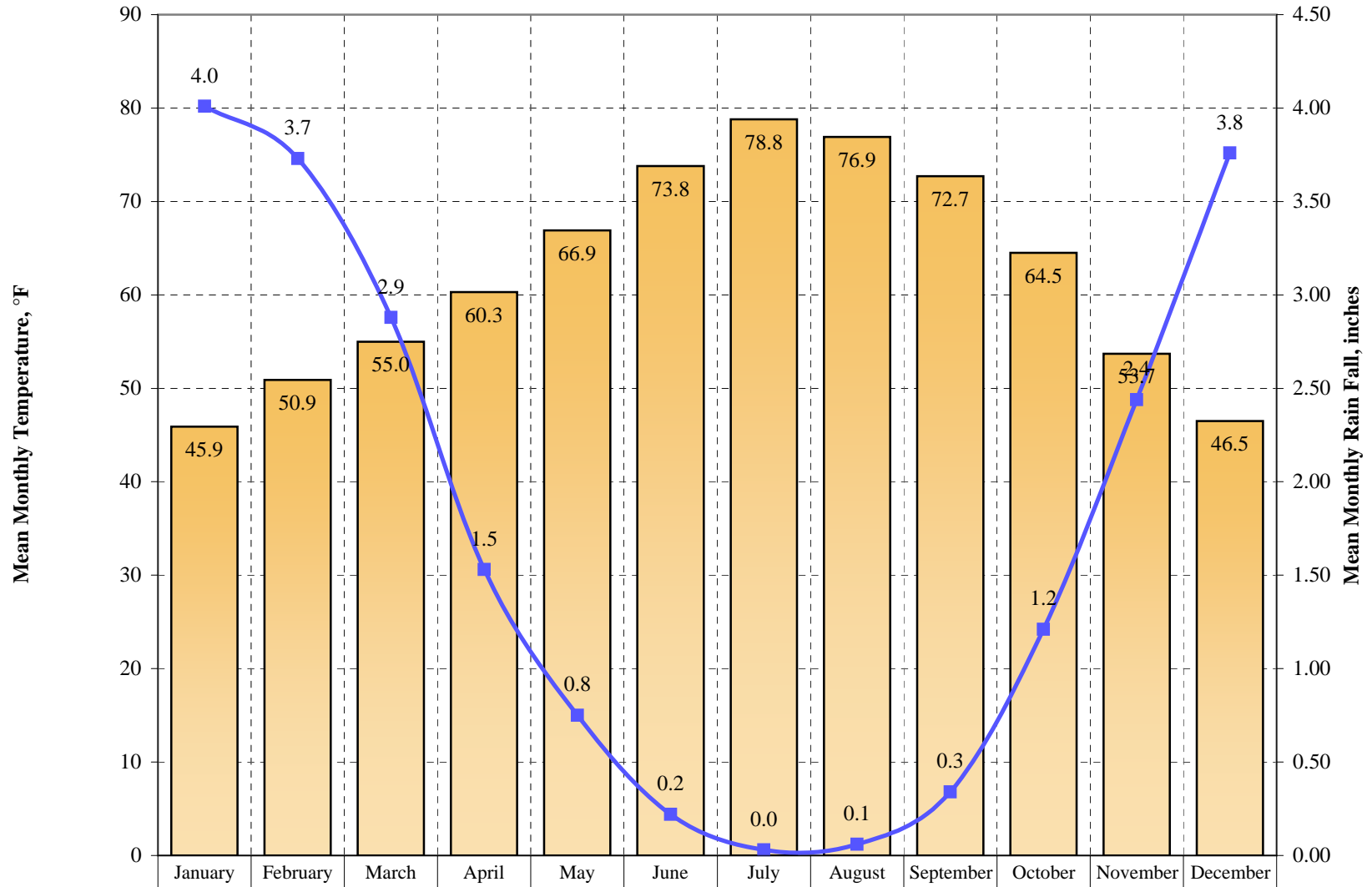
2.70

Marysville District Housing Projections



Marysville District

Mean Monthly Temperature and Rainfall

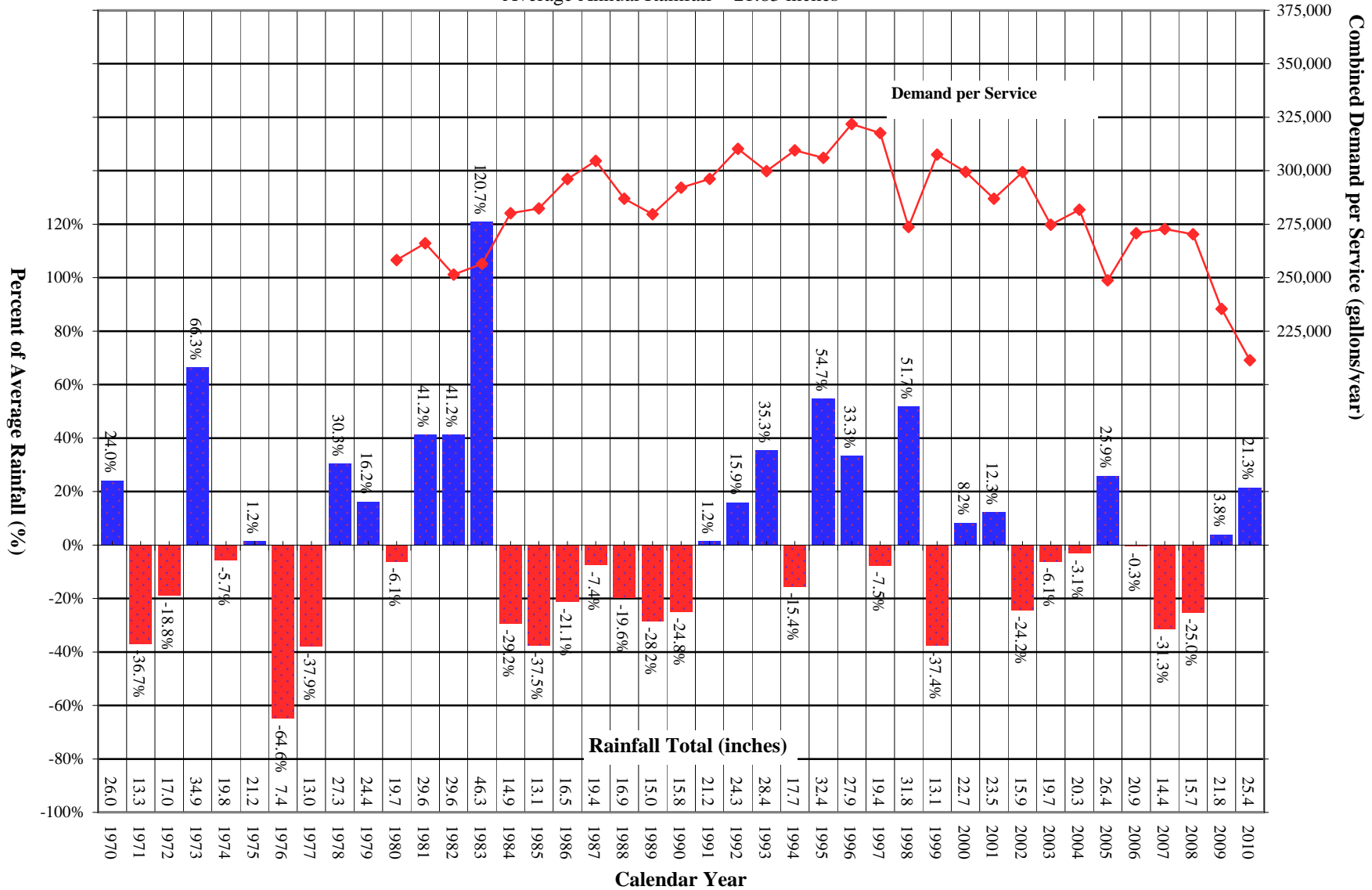


Temperature	45.9	50.9	55	60.3	66.9	73.8	78.8	76.9	72.7	64.5	53.7	46.5
Rainfall	4.01	3.73	2.88	1.53	0.75	0.22	0.03	0.06	0.34	1.21	2.44	3.76

Marysville District

Comparison of Annual Rainfall to Historical Average

Average Annual Rainfall = 21.83 inches



California Water Service Company - Marysville

Water Supply and Demand Analysis and Projections

Temperature & Rainfall History (Fahrenheit, Inches)

Year	Annual Average Temp.	Annual Average Rainfall	Rainfall Percent Variation	Demand per Service (Gal / Yr)	
1970	63.6	26.00	24.0%		
1971	61.5	13.26	-36.7%		
1972	61.7	17.03	-18.8%		
1973	63.0	34.86	66.3%		
1974	62.7	19.77	-5.7%		
1975	60.8	21.22	1.2%		
1976	62.5	7.41	-64.6%		
1977	62.6	13.02	-37.9%		
1978	62.8	27.32	30.3%		
1979	62.6	24.36	16.2%		
1980	61.9	19.69	-6.1%	258,228	90.7%
1981	63.1	29.59	41.2%	266,093	93.5%
1982	60.5	29.60	41.2%	251,497	88.4%
1983	61.9	46.26	120.7%	256,526	90.1%
1984	63.9	14.85	-29.2%	280,094	98.4%
1985	62.2	13.09	-37.5%	282,408	99.2%
1986	64.9	16.54	-21.1%	296,067	104.0%
1987	63.4	19.40	-7.4%	304,589	107.0%
1988	64.4	16.85	-19.6%	286,920	100.8%
1989	62.6	15.04	-28.2%	279,664	98.3%
1990	63.1	15.77	-24.8%	292,034	102.6%
1991	63.4	21.22	1.2%	296,201	104.1%
1992	63.5	24.30	15.9%	310,192	109.0%
1993	63.2	28.35	35.3%	299,782	105.3%
1994	63.1	17.73	-15.4%	309,541	108.8%

Year	Annual Average Temp.	Annual Average Rainfall	Rainfall Percent Variation	Demand per Service (Gal / Yr)	
1995	64.2	32.42	54.7%	305,963	107.5%
1996	64.3	27.94	33.3%	321,881	113.1%
1997	66.8	19.39	-7.5%	317,590	111.6%
1998	62.7	31.79	51.7%	273,736	96.2%
1999	56.7	13.12	-37.4%	307,561	108.1%
2000	57.1	22.68	8.2%	299,453	105.2%
2001	67.7	23.53	12.3%	286,983	100.9%
2002	62.9	15.88	-24.2%	299,300	105.2%
2003	69.3	19.69	-6.1%	274,805	96.6%
2004	64.7	20.32	-3.1%	281,776	99.0%
2005	66.4	26.38	25.9%	248,746	87.4%
2006	62.7	20.90	-0.3%	270,778	95.2%
2007	---	14.39	-31.3%	272,783	95.9%
2008	---	15.72	-25.0%	270,336	95.0%
2009	---	21.76	3.8%	235,362	82.7%
2010	---	25.43	21.3%	211,383	74.3%
2011					
2012					
2013					
2014					
2015					
2016					
2017					
2018					
2019					

Source: Western Regional Climate Center:

<http://www.wrcc.dri.edu/cgi-bin/cliMAIN.pl?ca5385>

Calendar Year	Average Water Year	Normal Water Year	Single-Dry Water Year	Multiple-Dry Water Years			
				1	2	3	4
	-	2004	1999	2006	2007	2008	2009
Demand per Service (gal/yr)	282,202	281,776	307,561	270,778	272,783	270,336	235,362
Difference from Average	100.0%	100.0%	109.2%	96.1%	96.8%	95.9%	83.5%

California Water Service Company - Marysville Water Supply and Demand Analysis and Projections

Temperature Data

Station:(045385) MARYSVILLE															
From Year=1897 To Year=2007															
	Monthly Averages			Daily Extremes				Monthly Extremes				Max. Temp.		Min. Temp.	
	Max.	Min.	Mean	High	Date	Low	Date	Highest Mean	Year	Lowest Mean	Year	>= 90 F	<= 32 F	<= 32 F	<= 0 F
	F	F	F	F	dd/yyyy or yyyymmdd	F	dd/yyyy or yyyymmdd	F	-	F	-	# Days	# Days	# Days	# Days
January	54.1	37.7	45.9	96	16/1907	9	20/1907	51.3	1995	38.7	1937	0	0	7.2	0
February	60.4	41.3	50.9	83	28/1985	19	5/1910	57.1	1963	44.1	1910	0	0	2.1	0
March	66	44	55	89	27/1988	26	2/1971	61.1	1934	49.7	1922	0	0	0.5	0
April	73	47.6	60.3	100	15/1947	30	28/1934	65.8	1907	51.4	1967	0.8	0	0.1	0
May	81.2	52.7	66.9	105	29/1910	36	7/1916	74.5	1992	61.2	1948	5.9	0	0	0
June	89.6	58.1	73.8	113	16/1961	41	28/1934	79.5	1981	65.3	1923	15.2	0	0	0
July	96.3	61.3	78.8	118	8/1905	45	2/1956	87.1	1907	74.4	1987	26.2	0	0	0
August	94.6	59.3	76.9	115	14/1933	45	30/1912	83.6	2004	71.6	1911	24.5	0	0	0
September	89.2	56.2	72.7	113	2/1950	37	15/1911	78.5	1984	66.2	1911	15.3	0	0	0
October	79	49.9	64.5	104	3/2001	32	17/1905	72.4	1915	57.6	1924	3.6	0	0.1	0
November	65.2	42.2	53.7	89	10/1955	24	14/1916	60.9	1914	47.7	1922	0	0	1.8	0
December	55.1	38	46.5	82	9/1909	16	10/1932	52	2002	40.5	1963	0	0	6.7	0
Annual	75.3	49	62.2	118	19050708	9	19070120	64.4	1988	58.8	1922	91.5	0	18.3	0

Monthly Average	Jan	Feb	Mar	Apr	May	Jun	Jul	Aug	Sep	Oct	Nov	Dec	Total
Eto	1.55	2.24	3.72	5.10	6.82	7.80	8.68	7.75	5.70	4.03	2.10	1.55	57.04

1) California Irrigation Management Information System (CIMIS), <http://www.cimis.water.ca.gov/cimis/welcome.jsp>, EvapoTranspiration (Eto) Zones Map, Zone 14

California Water Service Company - Marysville Water Supply and Demand Analysis and Projections

Precipitaion Data

Station:(045385) MARYSVILLE														
From Year=1897 To Year=2007														
	Precipitation											Total Snowfall		
	Mean	High	Year	Low	Year	1 Day Max.		>= 0.01 in.	>= 0.10 in.	>= 0.50 in.	>= 1.00 in.	Mean	High	Year
	in.	in.	-	in.	-	in.	dd/yyyy or yyyymmdd	# Days	# Days	# Days	# Days	in.	in.	-
January	4.01	11.98	1995	0.03	2007	3.95	2/1916	10	7	3	1	0.2	4.5	1930
February	3.73	9.5	1936	0.01	1953	2.99	3/1925	9	7	3	1	0	0	1932
March	2.88	11.19	1991	0	2001	2.51	21/1937	8	6	2	1	0	2	1942
April	1.53	5.07	1942	0	1916	2.89	4/1926	5	4	1	0	0	0	1924
May	0.75	3.83	1998	0	1910	1.85	27/1906	3	2	1	0	0	0	1916
June	0.22	1.75	1995	0	1904	1.36	16/1995	1	1	0	0	0	0	1943
July	0.03	1.68	1974	0	1904	1.45	8/1974	0	0	0	0	0	0	1924
August	0.06	1.0	1965	0	1910	0.93	12/1965	0	0	0	0	0	0	1924
September	0.34	3.4	1918	0	1907	2	12/1918	1	1	0	0	0	0	1945
October	1.21	9.31	1962	0	1913	4.24	13/1962	3	2	1	0	0	0	1916
November	2.44	7.38	1973	0	1907	2.36	29/1970	7	5	2	1	0	0.1	2003
December	3.76	14.04	1983	0	1989	7.29	25/1983	9	6	3	1	0	0.5	1972
Annual	20.96	46.26	1983	7.41	1976	7.29	19831225	58	40	15	5	0.2	0.5	1972

California Water Service Company - Marysville Water Supply and Demand Analysis and Projections

Groundwater Production Facilities

Well Number	Design Capacity (gpm)	
	Active	Inactive
4-02		800
7-02	600	
8-01	900	
9-01	750	
10-01	815	
11-01	1000	
12-01	1000	
13-01	450	
14-01		800
15-01	800	

Total units	10	8	2	Units
-------------	----	---	---	-------

Design Capacity	6,315	1,600	GPM
	9.1	2.3	MGD
	10,186.1	2,580.8	AFY

Notes:

1) Listed pump capacities on this worksheet represent design flowrates, actual flowrates are highly dependent on local system pressures, well characteristics, and other design criteria

2) Values in bold are estimated

Updated 1/1/2011

Marysville District Per Capita Consumption



California Water Service Company - Marysville District
Water Supply and Demand Analysis and Projections

Per Capita Water Demand Calculation

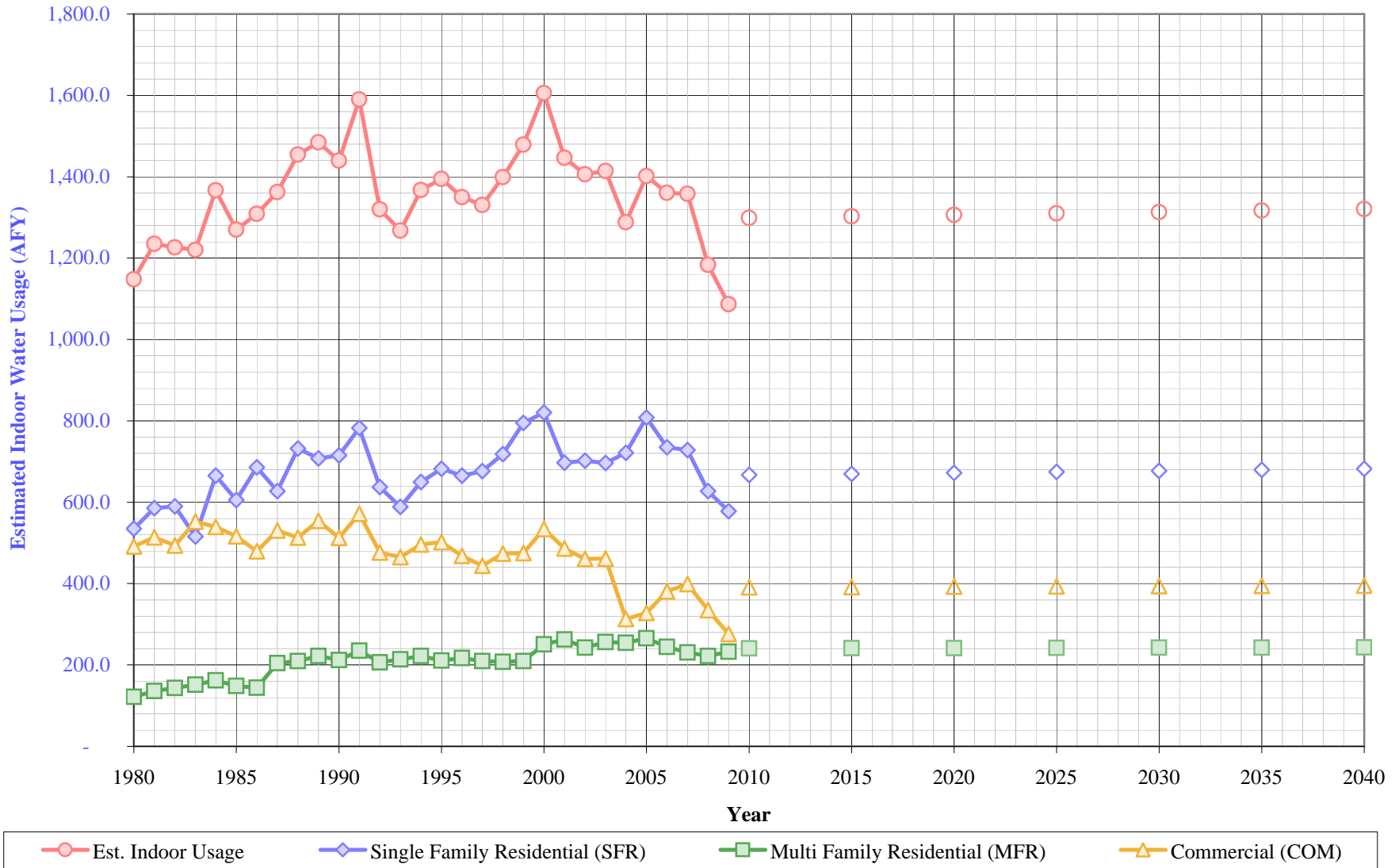
Year	All Users			Residential Only		
	Usage (AFY)	Usage (MGY)	Gallons Per Capita Per Day	Usage (AFY)	Usage (MGY)	Gallons Per Capita Per Day
1995	3,513	1,145	259	2,247	732	166
1996	3,693	1,204	272	2,371	773	175
1997	3,620	1,180	268	2,310	753	171
1998	3,112	1,014	230	1,926	628	142
1999	3,501	1,141	258	2,209	720	163
2000	3,414	1,112	252	2,102	685	155
2001	3,277	1,068	242	2,042	665	151
2002	3,432	1,118	252	2,146	699	158
2003	3,163	1,031	231	2,046	667	149
2004	3,238	1,055	235	2,119	690	154
2005	2,853	930	204	1,823	594	131
2006	3,104	1,011	223	2,045	666	147
2007	3,123	1,017	224	2,002	652	144
2008	3,065	999	221	1,885	614	136
2009	2,630	857	191	1,680	548	122
2010	2,365	770	169	1,489	485	106
5 Yr. Avg.	2,857	931	206	1,820	593	131
10 Yr. Avg.	3,025	986	219	1,928	628	140

Five year average is from years 2006 through 2010.

Ten year average is from years 2001 through 2010.

Marysville District

Estimated Indoor Water Usage



California Water Service Company - Marysville District
Water Supply and Demand Analysis and Projections

Estimated Indoor/Outdoor Water Usage

Year	Single Family Residential (SFR)								Multi Family Residential (MFR)				Commercial (COM)				Est. Indoor Usage
	Metered Single Family Residential Indoor Use (Annualized 90% of January Total)			Indoor Flat Rate Usage (AFY)	Total SFR Indoor Usage			Multi Family Residential January Usage (CCF)	Multi Family Residential Indoor Use (Annualized 90% of January Total)			Commercial (CCF)	Commercial Indoor Use (Annualized 90% of January Total)				
	JAN (CCF)	AFY	AFY/Service		AFY	GPD/Service	%		AFY	GPD/Service	%		AFY	GPD/Service	%		
1980	1,780	44	0.19	491	535	166	35%	4,911	122	2,313	60%	19,813	491	704	72%	1,148	
1981	1,892	47	0.20	538	585	179	38%	5,486	136	2,530	63%	20,722	514	732	72%	1,235	
1982	1,843	46	0.20	544	590	180	39%	5,778	143	2,610	69%	19,910	494	690	74%	1,227	
1983	1,695	42	0.18	474	516	157	34%	6,120	152	2,709	69%	22,293	553	780	81%	1,220	
1984	2,289	57	0.23	608	665	201	39%	6,547	162	2,898	69%	21,755	539	761	75%	1,367	
1985	2,063	51	0.20	554	605	182	35%	5,992	149	2,601	66%	20,812	516	738	73%	1,270	
1986	2,385	59	0.23	626	686	205	38%	5,816	144	2,220	53%	19,326	479	679	66%	1,309	
1987	2,298	57	0.21	570	627	187	34%	8,250	205	3,095	71%	21,399	531	742	72%	1,362	
1988	2,821	70	0.24	662	732	218	42%	8,439	209	3,013	70%	20,700	513	718	70%	1,455	
1989	2,764	69	0.24	639	708	211	42%	8,964	222	3,052	75%	22,355	554	778	77%	1,484	
1990	2,885	72	0.24	644	715	213	40%	8,549	212	2,911	70%	20,674	513	718	71%	1,440	
1991	3,240	80	0.26	702	783	233	41%	9,484	235	3,230	83%	23,065	572	798	81%	1,590	
1992	2,686	67	0.21	571	637	190	32%	8,321	206	2,834	69%	19,218	476	670	67%	1,320	
1993	2,555	63	0.20	525	589	175	31%	8,624	214	2,937	68%	18,769	465	657	65%	1,268	
1994	2,841	70	0.22	579	650	194	33%	8,944	222	3,046	74%	20,006	496	700	68%	1,367	
1995	3,045	75	0.23	607	682	204	35%	8,505	211	2,896	69%	20,232	502	717	71%	1,395	
1996	3,057	76	0.22	589	665	199	32%	8,742	217	2,977	68%	18,874	468	674	64%	1,350	
1997	3,140	78	0.23	599	677	204	34%	8,445	209	2,876	65%	17,914	444	647	63%	1,330	
1998	3,346	83	0.24	635	718	217	44%	8,367	207	2,806	72%	19,103	474	697	71%	1,399	
1999	3,788	94	0.27	701	795	240	42%	8,452	210	2,792	66%	19,150	475	698	66%	1,479	
2000	3,935	98	0.28	723	821	247	46%	10,115	251	3,342	75%	21,539	534	778	73%	1,605	
2001	3,382	84	0.23	613	697	210	41%	10,597	263	3,501	76%	19,623	487	716	74%	1,446	
2002	3,440	85	0.24	617	702	210	39%	9,794	243	3,236	70%	18,574	461	675	68%	1,406	
2003	3,715	92	0.23	604	697	207	42%	10,337	256	1,830	66%	18,610	461	769	85%	1,414	
2004	4,082	101	0.24	620	721	214	42%	10,249	254	1,786	64%	12,613	313	531	61%	1,288	
2005	4,757	118	0.27	690	808	240	55%	10,711	266	1,882	74%	13,227	328	554	64%	1,402	
2006	4,491	111	0.24	624	735	218	44%	9,862	245	1,732	67%	15,368	381	643	75%	1,360	
2007	4,684	116	0.24	612	728	217	44%	9,310	231	1,649	65%	16,082	399	672	73%	1,358	
2008	4,478	111	0.21	516	627	189	41%	8,941	222	1,571	62%	13,496	335	571	60%	1,184	
2009	5,258	130	0.20	448	578	176	43%	9,369	232	1,672	68%	11,151	276	488	65%	1,087	
2010	---	---	---	---	667	203	39%	---	241	1,732	67%	---	391	690	71%	1,299	
2015	---	---	---	---	669	203	39%	---	241	1,732	67%	---	392	690	71%	1,302	
2020	---	---	---	---	672	203	39%	---	242	1,732	67%	---	393	690	71%	1,306	
2025	---	---	---	---	674	203	39%	---	242	1,732	67%	---	393	690	71%	1,310	
2030	---	---	---	---	677	203	39%	---	242	1,732	67%	---	394	690	71%	1,313	
2035	---	---	---	---	680	203	39%	---	243	1,732	67%	---	395	690	71%	1,317	
2040	---	---	---	---	682	203	39%	---	243	1,732	67%	---	395	690	71%	1,321	

California Water Service Company - Marysville District

Water Supply and Demand Analysis and Projections

Comparison of Projected Demand and Conservation Savings Between SBx7-7 Compliance Targets and Actual Proposed Programs

Year	SBx7-7 Compliance Target (gpcd)	Anticipated GPCD with Proposed Programs*	Estimated Population	Undadjusted Baseline Demand (AFY)	SBx7-7 Compliance Target Demand (AFY)	Anticipated Demand with Proposed Programs (AFY)	Compliance Target Savings Requirement (AFY)	Savings Due to Proposed Programs (AFY)
2005-2009 Average	213	213	12,401	2,955	2,955	2,955	0	0
2010	213	213	12,515	2,982	2,982	2,982	0	0
2011	211	200	12,522	2,984	2,966	2,805	18	178
2012	210	195	12,530	2,986	2,950	2,737	36	249
2013	209	190	12,538	2,987	2,934	2,668	54	319
2014	208	187	12,546	2,989	2,918	2,628	72	361
2015	206	186	12,553	2,991	2,902	2,615	89	376
2016	205	186	12,561	2,993	2,886	2,617	107	376
2017	204	186	12,569	2,995	2,870	2,619	125	376
2018	203	186	12,577	2,997	2,853	2,620	143	376
2019	201	186	12,584	2,999	2,837	2,622	161	377
2020	200	186	12,592	3,000	2,821	2,624	179	377
2021	200	186	12,600	3,002	2,823	2,625	180	377
2022	200	186	12,608	3,004	2,824	2,627	180	377
2023	200	186	12,616	3,006	2,826	2,628	180	378
2024	200	186	12,623	3,008	2,828	2,630	180	378
2025	200	186	12,631	3,010	2,830	2,632	180	378
2026	200	186	12,639	3,012	2,831	2,633	180	378
2027	200	186	12,647	3,013	2,833	2,635	180	379
2028	200	186	12,655	3,015	2,835	2,637	180	379
2029	200	186	12,662	3,017	2,837	2,638	180	379
2030	200	186	12,670	3,019	2,838	2,640	181	379
2031	200	186	12,678	3,021	2,840	2,641	181	379
2032	200	186	12,686	3,023	2,842	2,643	181	380
2033	200	186	12,694	3,025	2,844	2,645	181	380
2034	200	186	12,701	3,026	2,845	2,646	181	380
2035	200	186	12,709	3,028	2,847	2,648	181	380
2036	200	186	12,717	3,030	2,849	2,650	181	381
2037	200	186	12,725	3,032	2,851	2,651	181	381
2038	200	186	12,733	3,034	2,853	2,653	181	381
2039	200	186	12,741	3,036	2,854	2,654	182	381
2040	200	186	12,749	3,038	2,856	2,656	182	382

*Note: The district is projected to achieve its district-specific 2015 and 2020 SBx7-7 compliance target in 2015 through a combination of passive and active savings. For the purpose of this analysis it is assumed that GPCD will remain flat from 2015 through 2040.