

Water Resources Planning Department

Water Supply / Demand Analysis and Projections
for
Livermore District

2010

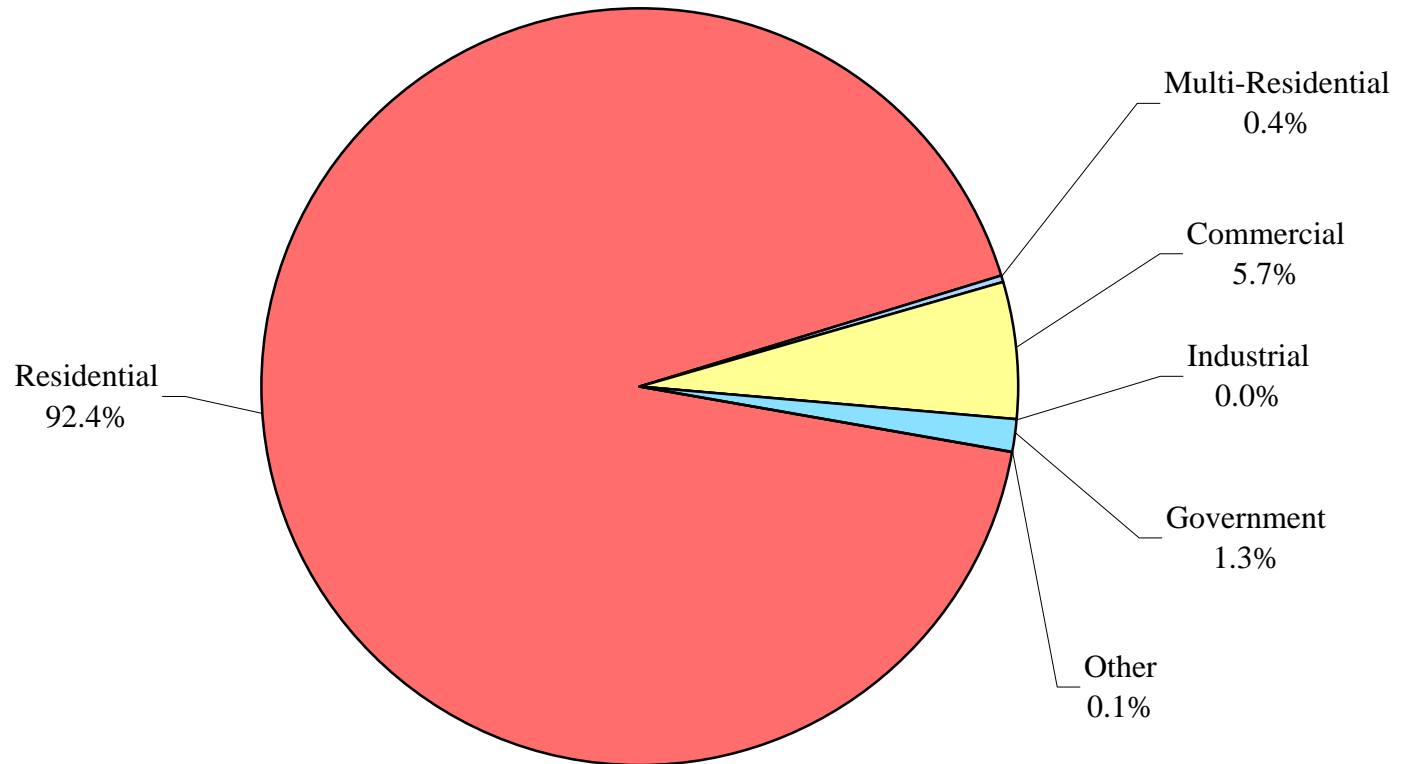


Table of Contents for Worksheets

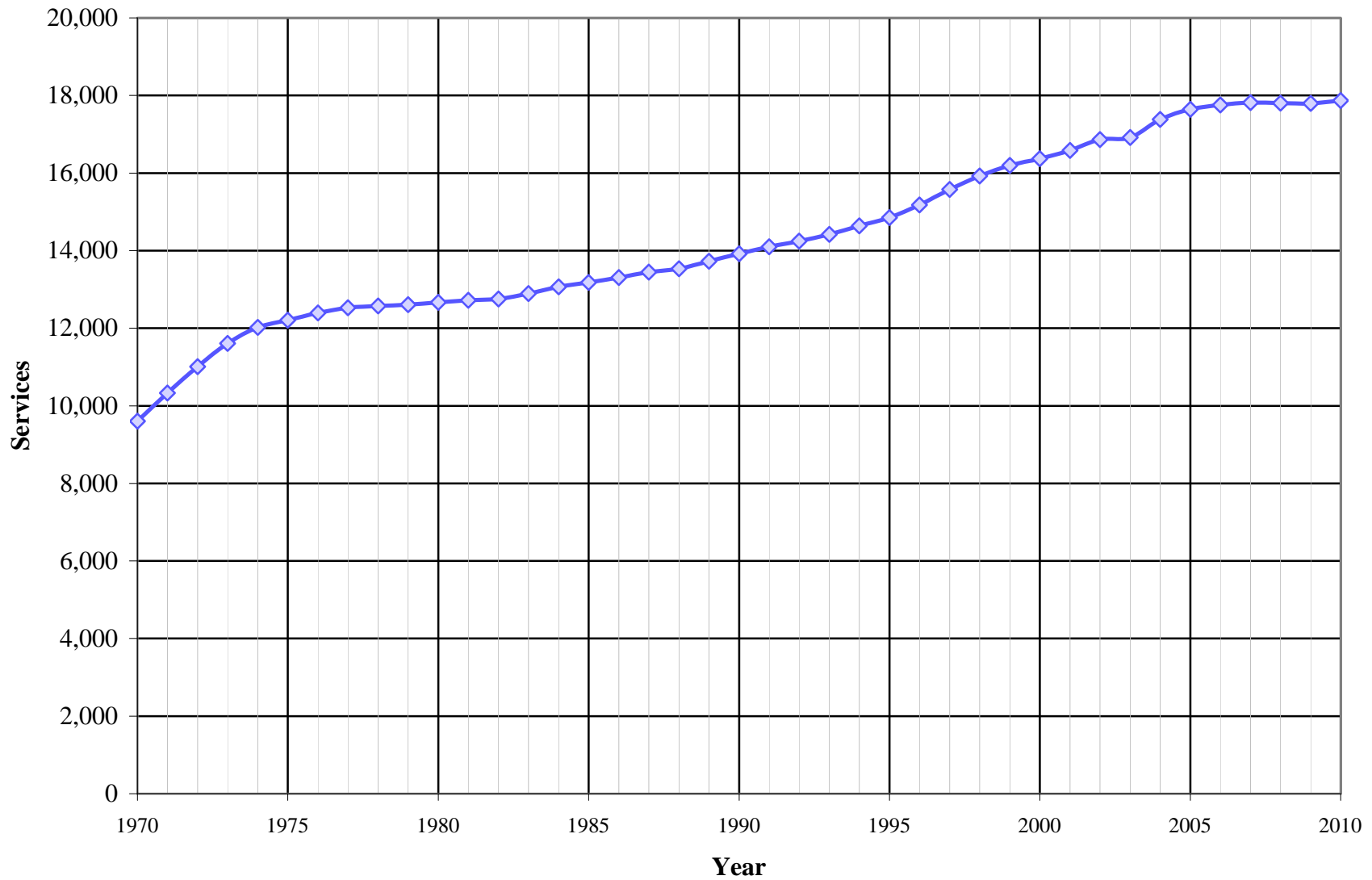
Worksheet	Title
1	Annual Services
2	Service Growth Percentage
3	District Sales (ccf)
4	District Sales (AF)
5	Demand per Service (Gallons/Service/Year)
6	Demand per Service (Gallons per Day)
7	Percentage Change in Annual Demand
8	Percentage of Total Sales
9	Percentage of Total Demand
10	Demand Scenario 1 (Low Demand Projection)
11	Demand Scenario 2 (Average Demand Projection)
12	Demand Scenario 3 (High Demand Projection)
13	Demand Scenario 4 (Alternate Service Projection)
14	Not used
15	Actual & Projected Annual Average Services
16	Actual & Projected Demand in Acre-Feet
17	Projected Annual Supply by Source
18	Historical and Projected Average Day, Maximum Day, and Peak Demands
19	Population as of the 2000 Average Annual Services
20	Temperature & Rainfall History
21	Groundwater Facilities (if available)
22	Per Capita Water Demand Calculation
23	Indoor/Outdoor Water Usage
24	SB-7 Compliance Demand Worksheet

Livermore District

Distribution of Services (2010)



Livermore District Historical Services



California Water Service Company - Livermore District
Water Supply and Demand Analysis and Projections
Service Growth Percentage

Year	Residential	Multi-Residential	Multi-Res. units	Commercial	Industrial	Government	Other	Total
1981	0.38%	0.00%	0.46%	1.50%	-11.11%	0.00%	16.67%	0.43%
1982	0.23%	0.00%	0.08%	0.16%	0.00%	0.86%	-14.29%	0.23%
1983	1.13%	0.00%	0.00%	0.99%	0.00%	0.00%	0.00%	1.11%
1984	1.33%	0.00%	-0.08%	2.11%	137.50%	0.00%	0.00%	1.43%
1985	0.67%	2.22%	8.46%	3.82%	-57.89%	0.85%	50.00%	0.76%
1986	0.96%	2.17%	4.25%	1.07%	0.00%	3.39%	0.00%	0.99%
1987	0.92%	-2.13%	-0.27%	3.49%	0.00%	0.00%	-11.11%	1.02%
1988	0.78%	-2.17%	-0.20%	-0.29%	-25.00%	-3.28%	37.50%	0.68%
1989	1.43%	6.67%	9.73%	0.00%	0.00%	5.93%	9.09%	1.42%
1990	1.35%	50.00%	25.38%	-1.32%	-16.67%	2.40%	16.67%	1.40%
1991	1.23%	4.17%	7.27%	2.09%	0.00%	-0.78%	21.43%	1.29%
1992	1.11%	0.00%	-0.77%	0.29%	-20.00%	0.79%	-17.65%	1.04%
1993	1.24%	1.33%	0.64%	1.16%	-25.00%	1.56%	-21.43%	1.21%
1994	1.52%	-1.32%	-0.23%	1.73%	0.00%	0.77%	27.27%	1.53%
1995	1.55%	0.00%	-2.88%	-0.28%	0.00%	1.53%	0.00%	1.45%
1996	2.28%	0.00%	2.49%	1.13%	0.00%	0.00%	14.29%	2.20%
1997	2.75%	0.00%	-0.87%	1.26%	0.00%	0.00%	-6.25%	2.64%
1998	2.26%	0.00%	-0.88%	1.52%	0.00%	4.51%	26.67%	2.25%
1999	1.62%	0.00%	0.23%	2.59%	0.00%	2.16%	26.32%	1.69%
2000	0.66%	0.00%	0.84%	7.05%	0.00%	14.79%	-4.17%	1.07%
2001	1.05%	0.00%	-1.02%	4.35%	-33.33%	9.20%	30.43%	1.33%
2002	1.66%	0.00%	-0.05%	2.26%	-50.00%	-0.56%	20.00%	1.69%
2003	0.24%	0.00%	4.53%	1.63%	0.00%	-0.56%	2.78%	0.30%
2004	2.93%	0.00%	0.09%	1.03%	0.00%	0.00%	-8.11%	2.76%
2005	1.48%	0.00%	4.86%	2.38%	0.00%	-1.14%	-8.82%	1.47%
2006	0.62%	0.00%	-0.72%	1.22%	0.00%	3.45%	-16.13%	0.65%
2007	0.22%	0.00%	-5.91%	2.52%	0.00%	0.00%	0.00%	0.34%
2008	-0.60%	1.33%	-0.05%	6.51%	0.00%	16.11%	-11.54%	-0.07%
2009	-0.32%	0.00%	-2.05%	2.61%	-100.00%	11.96%	-21.74%	-0.04%
2010	0.47%	2.63%	-100.00%	-0.10%	#DIV/0!	0.00%	-16.67%	0.43%
5 Yr. Avg.	0.28%	0.27%	-0.77%	3.05%	-20.00%	6.08%	-11.65%	0.47%
10 Yr. Avg.	0.79%	0.13%	0.05%	3.16%	-18.33%	5.33%	-1.73%	0.95%
20 Yr. Avg.	1.24%	2.78%	1.55%	2.09%	-12.25%	3.31%	3.50%	1.31%

Five year average = 2005 through 2009.

Ten year average = 2000 through 2009.

Twenty year average = 1990 through 2009.

California Water Service Company - Livermore District

Water Supply and Demand Analysis and Projections

Average Annual Services

Year	Residential	Multi-Residential	Multi-Res. units	Commercial	Industrial	Government	Other	Total	Annual Change
1970	8,949	0	0	567	6	78	7	9,607	
1971	9,653	0	0	579	6	85	8	10,331	724
1972	10,305	0	0	596	6	93	11	11,011	680
1973	10,897	0	0	604	6	96	8	11,611	600
1974	11,292	42	1,245	572	6	102	6	12,020	409
1975	11,472	43	1,311	577	5	107	5	12,209	189
1976	11,642	43	1,306	579	7	112	8	12,391	182
1977	11,771	43	1,307	584	7	115	10	12,530	139
1978	11,815	44	1,318	587	7	116	7	12,576	46
1979	11,844	45	1,318	587	7	117	9	12,609	33
1980	11,894	45	1,318	599	9	116	6	12,669	60
1981	11,939	45	1,324	608	8	116	7	12,723	54
1982	11,967	45	1,325	609	8	117	6	12,752	29
1983	12,102	45	1,325	615	8	117	6	12,893	141
1984	12,263	45	1,324	628	8	117	6	13,067	174
1985	12,345	46	1,436	652	8	118	9	13,178	111
1986	12,463	47	1,497	659	8	122	9	13,308	130
1987	12,578	46	1,493	682	8	122	8	13,444	136
1988	12,676	45	1,490	680	6	118	11	13,536	92
1989	12,857	48	1,635	680	6	125	12	13,728	192
1990	13,030	72	2,050	671	5	128	14	13,920	192
1991	13,190	75	2,199	685	5	127	17	14,099	179
1992	13,337	75	2,182	687	4	128	14	14,245	146
1993	13,502	76	2,196	695	3	130	11	14,417	172
1994	13,707	75	2,191	707	3	131	14	14,637	220
1995	13,919	75	2,128	705	3	133	14	14,849	212
1996	14,236	75	2,181	713	3	133	16	15,176	327
1997	14,628	75	2,162	722	3	133	15	15,576	400
1998	14,958	75	2,143	733	3	139	19	15,927	351
1999	15,200	75	2,148	752	3	142	24	16,196	269
2000	15,300	75	2,166	805	3	163	23	16,369	173
2001	15,461	75	2,144	840	2	178	30	16,586	217
2002	15,718	75	2,143	859	1	177	36	16,866	280
2003	15,755	75	2,240	873	1	176	37	16,917	51
2004	16,216	75	2,242	882	1	176	34	17,384	467
2005	16,457	75	2,351	903	1	174	31	17,641	256
2006	16,559	75	2,334	914	1	180	26	17,755	114
2007	16,596	75	2,196	937	1	180	26	17,815	60
2008	16,496	76	2,195	998	1	209	23	17,803	-12
2009	16,443	76	2,150	1,024	0	234	18	17,795	-8
2010	16,521	78		1,023	0	234	15	17,871	76
5 Yr. Avg.	16,510	75	2,245	955	1	195	25	17,762	82
10 Yr. Avg.	16,100	75	2,216	904	1	185	28	17,293	160
20 Yr. Avg.	15,035	75	2,187	805	2	159	22	16,099	203

Five year average = 2005 through 2009.

Ten year average = 2000 through 2009.

Twenty year average = 1990 through 2009.

California Water Service Company - Livermore District
Water Supply and Demand Analysis and Projections
Sales(ccf)

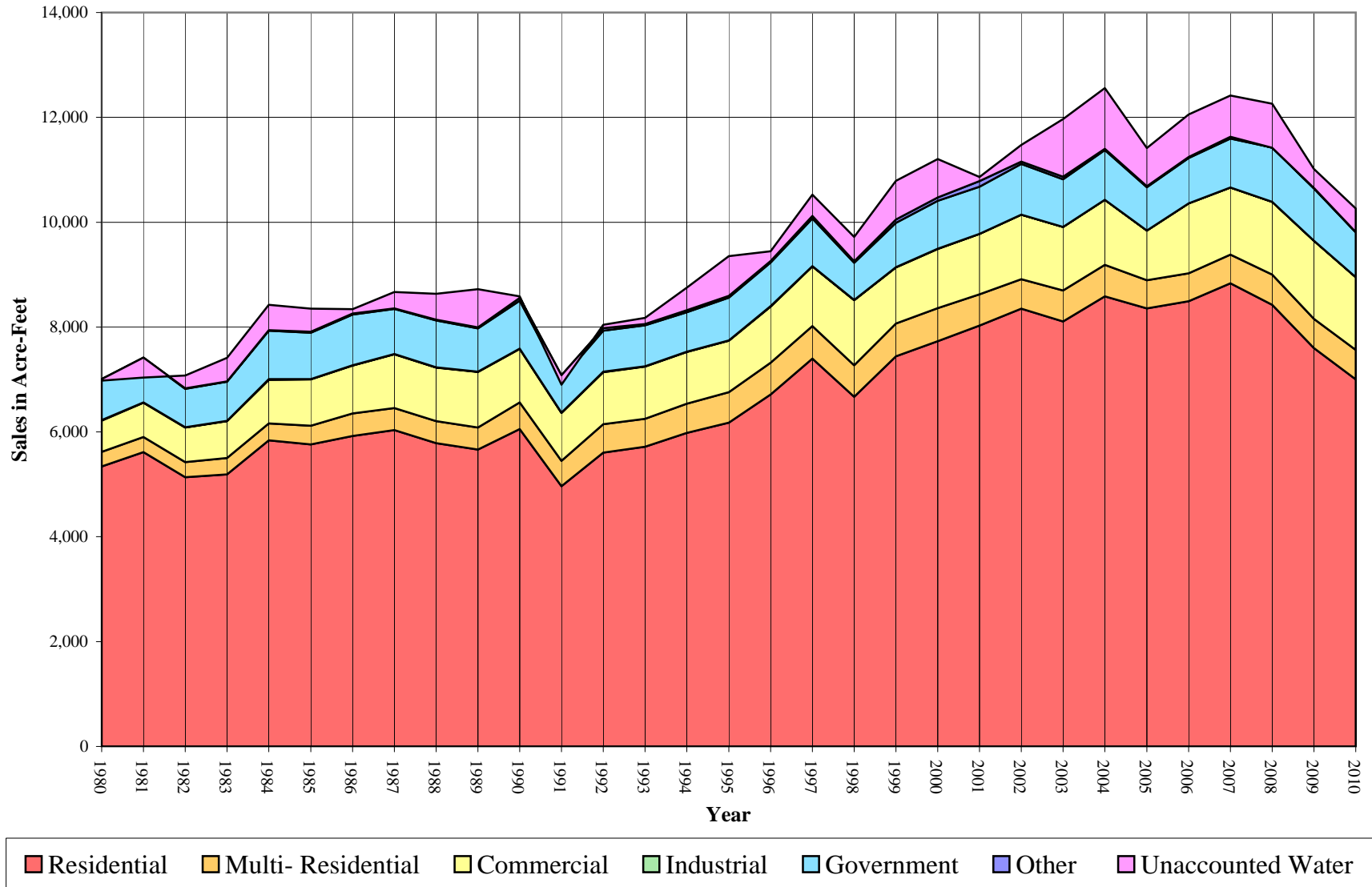
Worksheet 3

Year	Multi-						Unaccounted Water	Total(ccf) Sales	Total(ccf) Demand	Total(kgal) Demand
	Residential	Residential	Commercial	Industrial	Government	Other				
1980	2,325,688	123,202	259,467	2,527	338,579	2,390	-12,715	3,051,853	3,039,138	2,273,433
1981	2,445,089	127,116	283,750	2,284	368,402	3,790	-166,231	3,230,431	3,064,200	2,292,181
1982	2,237,975	125,007	286,708	2,690	319,813	2,714	108,253	2,974,907	3,083,160	2,306,364
1983	2,261,215	136,399	306,044	2,662	325,652	2,286	195,036	3,034,258	3,229,294	2,415,680
1984	2,543,454	140,903	361,959	5,148	402,805	4,005	210,444	3,458,274	3,668,718	2,744,392
1985	2,509,159	156,013	385,564	2,124	385,705	8,555	190,225	3,447,120	3,637,345	2,720,923
1986	2,579,561	186,596	398,174	2,364	422,339	8,499	35,214	3,597,533	3,632,747	2,717,484
1987	2,629,710	181,800	447,526	2,425	373,801	4,300	135,726	3,639,562	3,775,288	2,824,112
1988	2,520,658	183,346	444,646	2,332	388,295	5,958	215,236	3,545,235	3,760,471	2,813,028
1989	2,466,467	184,201	461,280	3,037	359,013	7,705	318,880	3,481,703	3,800,583	2,843,034
1990	2,637,701	220,617	445,360	2,591	396,804	24,523	12,954	3,727,596	3,740,550	2,798,126
1991	2,161,953	211,572	397,529	1,696	278,982	32,583	-78,981	3,084,315	3,005,334	2,248,146
1992	2,442,451	235,695	432,714	3,956	339,856	20,774	27,794	3,475,446	3,503,240	2,620,606
1993	2,489,414	233,929	432,390	3,347	340,114	10,740	50,957	3,509,934	3,560,891	2,663,732
1994	2,605,628	242,071	431,352	2,043	326,427	16,797	188,531	3,624,318	3,812,849	2,852,209
1995	2,690,349	253,094	428,029	1,794	354,982	15,214	329,689	3,743,462	4,073,151	3,046,929
1996	2,924,792	264,751	465,609	3,111	363,121	12,153	80,148	4,033,537	4,113,685	3,077,250
1997	3,223,444	269,870	494,948	2,024	396,511	20,795	177,220	4,407,592	4,584,812	3,429,678
1998	2,905,295	261,671	541,531	2,068	309,250	11,323	203,315	4,031,138	4,234,453	3,167,591
1999	3,242,693	271,664	466,147	2,193	368,568	26,185	323,287	4,377,450	4,700,737	3,516,396
2000	3,367,557	273,920	492,930	1,160	398,803	27,425	319,900	4,561,795	4,881,695	3,651,762
2001	3,496,297	260,782	501,887	149	392,127	45,618	34,197	4,696,860	4,731,057	3,539,077
2002	3,637,472	244,315	537,510	123	421,403	18,300	138,853	4,859,123	4,997,976	3,738,746
2003	3,530,836	257,781	528,252	140	396,187	20,213	479,211	4,733,409	5,212,620	3,899,311
2004	3,739,814	261,366	541,539	85	412,925	10,905	502,807	4,966,634	5,469,441	4,091,426
2005	3,639,324	235,503	412,481	18	358,947	9,302	317,075	4,655,575	4,972,650	3,719,801
2006	3,699,143	232,953	580,898	168	376,377	9,392	352,407	4,898,931	5,251,338	3,928,274
2007	3,849,523	237,609	556,380	0	408,315	14,023	342,870	5,065,850	5,408,720	4,046,004
2008	3,670,092	251,242	603,442	0	452,713	-2,082	365,172	4,975,407	5,340,579	3,995,031
2009	3,309,062	244,464	649,036	0	432,546	5,966	156,538	4,641,074	4,797,612	3,588,863
2010	3,049,416	245,199	605,812	0	371,984	1,810	195,003	4,274,221	4,469,224	3,343,212
5 Yr. Avg.	3,633,429	240,354	560,447	37	405,780	7,320	306,813	4,847,367	5,154,180	3,855,595
10 Yr. Avg.	3,593,912	249,994	540,436	184	405,034	15,906	300,903	4,805,466	5,106,369	3,819,830

Five year average is from years 2005 through 2009.

Ten year average is from years 2000 through 2009.

Livermore District Historical Sales



California Water Service Company - Livermore District
Water Supply and Demand Analysis and Projections
Sales(AF)

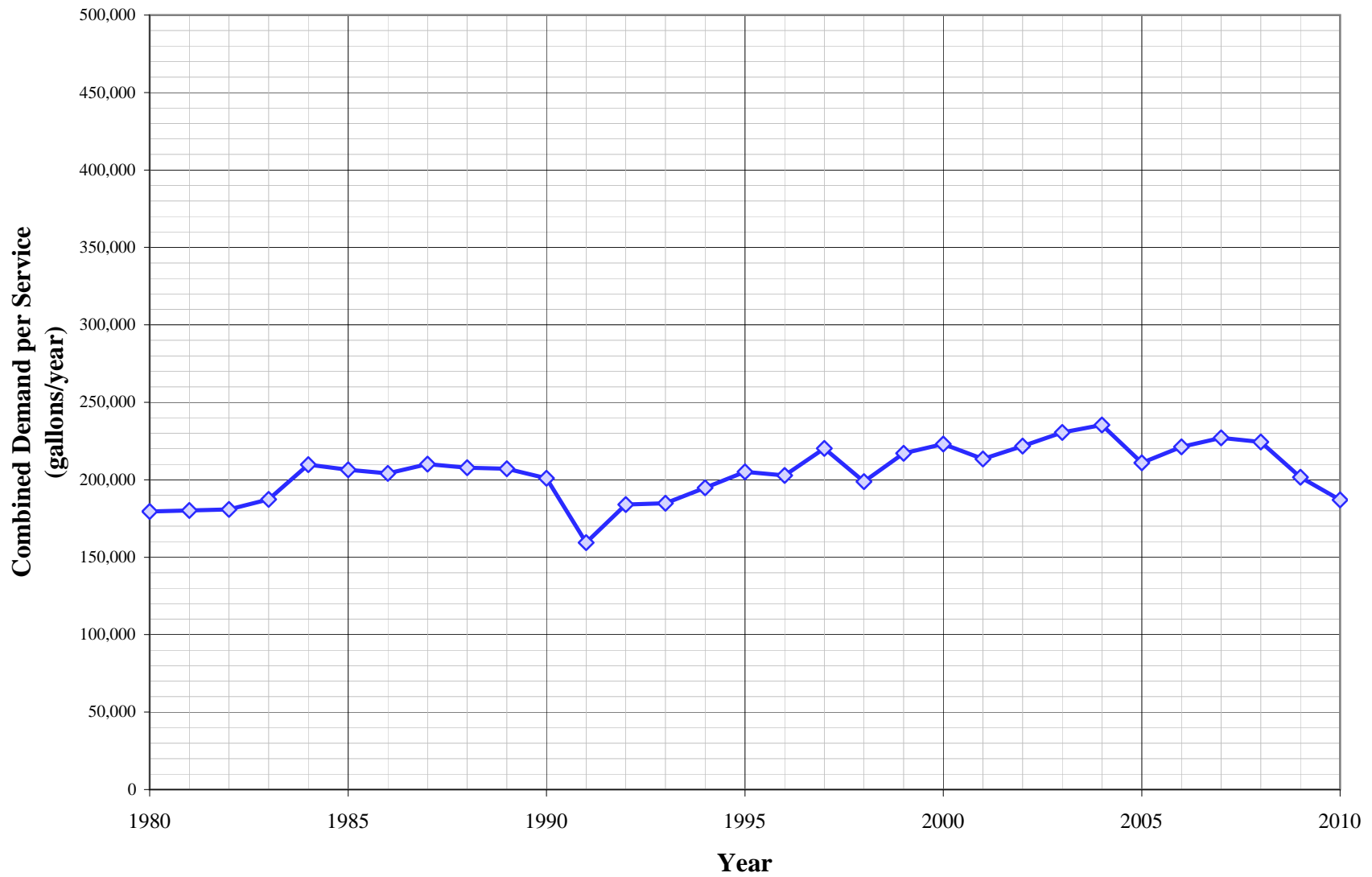
Worksheet 4

Year	Multi-							Unaccounted Water	Total(AF) Sales	Total(AF) Demand	Total(Mgal) Demand
	Residential	Residential	Commercial	Industrial	Government	Other					
1980	5,339	283	596	6	777	5	-29	7,006	6,977	2,273	
1981	5,613	292	651	5	846	9	-382	7,416	7,034	2,292	
1982	5,138	287	658	6	734	6	249	6,829	7,078	2,306	
1983	5,191	313	703	6	748	5	448	6,966	7,413	2,416	
1984	5,839	323	831	12	925	9	483	7,939	8,422	2,744	
1985	5,760	358	885	5	885	20	437	7,913	8,350	2,721	
1986	5,922	428	914	5	970	20	81	8,259	8,340	2,717	
1987	6,037	417	1,027	6	858	10	312	8,355	8,667	2,824	
1988	5,787	421	1,021	5	891	14	494	8,139	8,633	2,813	
1989	5,662	423	1,059	7	824	18	732	7,993	8,725	2,843	
1990	6,055	506	1,022	6	911	56	30	8,557	8,587	2,798	
1991	4,963	486	913	4	640	75	-181	7,081	6,899	2,248	
1992	5,607	541	993	9	780	48	64	7,979	8,042	2,621	
1993	5,715	537	993	8	781	25	117	8,058	8,175	2,664	
1994	5,982	556	990	5	749	39	433	8,320	8,753	2,852	
1995	6,176	581	983	4	815	35	757	8,594	9,351	3,047	
1996	6,714	608	1,069	7	834	28	184	9,260	9,444	3,077	
1997	7,400	620	1,136	5	910	48	407	10,118	10,525	3,430	
1998	6,670	601	1,243	5	710	26	467	9,254	9,721	3,168	
1999	7,444	624	1,070	5	846	60	742	10,049	10,791	3,516	
2000	7,731	629	1,132	3	916	63	734	10,472	11,207	3,652	
2001	8,026	599	1,152	0	900	105	79	10,783	10,861	3,539	
2002	8,350	561	1,234	0	967	42	319	11,155	11,474	3,739	
2003	8,106	592	1,213	0	910	46	1,100	10,866	11,967	3,899	
2004	8,585	600	1,243	0	948	25	1,154	11,402	12,556	4,091	
2005	8,355	541	947	0	824	21	728	10,688	11,416	3,720	
2006	8,492	535	1,334	0	864	22	809	11,246	12,055	3,928	
2007	8,837	545	1,277	0	937	32	787	11,630	12,417	4,046	
2008	8,425	577	1,385	0	1,039	-5	838	11,422	12,260	3,995	
2009	7,597	561	1,490	0	993	14	359	10,654	11,014	3,589	
2010	7,000	563	1,391	0	854	4	448	9,812	10,260	3,343	
5 Yr. Avg.	8,341	552	1,287	0	932	17	704	11,128	11,832	3,856	
10 Yr. Avg.	8,250	574	1,241	0	930	37	691	11,032	11,723	3,820	

Five year average is from years 2005 through 2009.

Ten year average is from years 2000 through 2009.

Livermore District Historical Demand per Service



California Water Service Company - Livermore District

Worksheet 5

Water Supply and Demand Analysis and Projections

Demand per Service (Gallons per Year)

Year	Multi-Residential			Commercial	Industrial	Government	Total Other	Unaccounted/ Total Services	Combined Demand/Serv
	Residential	(service)	(unit)						
1980	146,270	2,048,033	69,925	324,031	210,036	2,183,403	297,974	-751	179,448
1981	153,200	2,113,097	71,820	349,111	213,569	2,375,723	405,017	-9,774	180,160
1982	139,895	2,078,039	70,575	352,172	251,532	2,044,759	338,369	6,350	180,863
1983	139,771	2,267,412	77,006	372,255	248,914	2,082,091	285,008	11,316	187,364
1984	155,153	2,342,284	79,609	431,153	202,683	2,575,377	499,325	12,037	209,848
1985	152,044	2,537,083	81,271	442,365	198,608	2,445,147	711,065	10,798	206,475
1986	154,830	2,969,862	93,242	451,980	221,049	2,589,603	706,410	1,979	204,199
1987	156,397	2,956,432	91,089	490,869	226,753	2,291,988	402,078	7,552	210,065
1988	148,752	3,047,830	92,049	489,145	290,743	2,461,567	405,172	11,895	207,818
1989	143,505	2,870,665	84,276	507,443	378,639	2,148,483	480,312	17,376	207,097
1990	151,430	2,292,125	80,504	496,501	387,641	2,318,985	1,310,320	696	201,015
1991	122,612	2,110,225	71,972	434,120	253,739	1,643,252	1,433,752	-4,191	159,454
1992	136,993	2,350,828	80,803	471,168	739,823	1,986,172	1,110,002	1,460	183,967
1993	137,921	2,302,514	79,686	465,396	834,577	1,957,100	730,371	2,644	184,763
1994	142,201	2,414,423	82,648	456,398	509,423	1,864,003	897,502	9,635	194,863
1995	144,588	2,524,366	88,970	454,167	447,335	1,996,579	812,919	16,609	205,194
1996	153,688	2,640,634	90,806	488,499	775,730	2,042,356	568,192	3,951	202,771
1997	164,842	2,691,691	93,375	512,807	504,686	2,230,157	1,037,049	8,511	220,190
1998	145,294	2,609,914	91,341	552,651	515,657	1,664,281	445,800	9,549	198,882
1999	159,586	2,709,584	94,608	463,700	546,826	1,941,606	816,156	14,932	217,115
2000	164,648	2,732,085	94,601	458,059	289,247	1,830,217	891,971	14,619	223,090
2001	169,162	2,601,047	90,988	446,949	55,730	1,647,929	1,137,488	1,542	213,377
2002	173,115	2,436,804	85,282	468,085	92,010	1,780,968	380,260	6,159	221,674
2003	167,645	2,571,115	86,086	452,646	104,727	1,683,912	408,659	21,190	230,497
2004	172,516	2,606,871	87,206	459,296	63,584	1,755,053	239,927	21,636	235,351
2005	165,429	2,348,913	74,933	341,702	13,465	1,543,167	224,464	13,446	210,866
2006	167,109	2,323,479	74,662	475,429	125,673	1,564,164	270,219	14,848	221,249
2007	173,514	2,369,919	80,940	444,185	0	1,696,894	403,459	14,397	227,112
2008	166,429	2,472,922	85,623	452,311	0	1,620,349	-67,715	15,344	224,402
2009	150,541	2,406,208	85,057	474,133	0	1,382,765	247,938	6,580	201,678
2010	138,074	2,351,559		442,990		1,189,160	90,265	8,163	187,075
5 Yr. Avg.	164,605	2,384,288	80,243	437,552	27,828	1,561,468	215,673	12,923	217,061
10 Yr. Avg.	167,011	2,486,936	84,538	447,280	74,444	1,650,542	413,667	12,976	220,930

California Water Service Company - Livermore District

Water Supply and Demand Analysis and Projections

Demand per Service (Gallons per Day)

Year	Multi-Residential			Commercial	Industrial	Government	Total Other	Unaccounted/ Total Services	Combined Demand/Serv
	Residential	(Service)	(Unit)						
1980	401	5,611	192	888	575	5,982	816	-2	492
1981	420	5,789	197	956	585	6,509	1,110	-27	494
1982	383	5,693	193	965	689	5,602	927	17	496
1983	383	6,212	211	1,020	682	5,704	781	31	513
1984	425	6,417	218	1,181	555	7,056	1,368	33	575
1985	417	6,951	223	1,212	544	6,699	1,948	30	566
1986	424	8,137	255	1,238	606	7,095	1,935	5	559
1987	428	8,100	250	1,345	621	6,279	1,102	21	576
1988	408	8,350	252	1,340	797	6,744	1,110	33	569
1989	393	7,865	231	1,390	1,037	5,886	1,316	48	567
1990	415	6,280	221	1,360	1,062	6,353	3,590	2	551
1991	336	5,781	197	1,189	695	4,502	3,928	-11	437
1992	375	6,441	221	1,291	2,027	5,442	3,041	4	504
1993	378	6,308	218	1,275	2,287	5,362	2,001	7	506
1994	390	6,615	226	1,250	1,396	5,107	2,459	26	534
1995	396	6,916	244	1,244	1,226	5,470	2,227	46	562
1996	421	7,235	249	1,338	2,125	5,595	1,557	11	556
1997	452	7,374	256	1,405	1,383	6,110	2,841	23	603
1998	398	7,150	250	1,514	1,413	4,560	1,221	26	545
1999	437	7,424	259	1,270	1,498	5,319	2,236	41	595
2000	451	7,485	259	1,255	792	5,014	2,444	40	611
2001	463	7,126	249	1,225	153	4,515	3,116	4	585
2002	474	6,676	234	1,282	252	4,879	1,042	17	607
2003	459	7,044	236	1,240	287	4,613	1,120	58	631
2004	473	7,142	239	1,258	174	4,808	657	59	645
2005	453	6,435	205	936	37	4,228	615	37	578
2006	458	6,366	205	1,303	344	4,285	740	41	606
2007	475	6,493	222	1,217	0	4,649	1,105	39	622
2008	456	6,775	235	1,239	0	4,439	-186	42	615
2009	412	6,592	233	1,299	0	3,788	679	18	553
2010	378	6,443		1,214	0	3,258	247	22	513
5 Yr. Avg.	451	6,532	220	1,199	76	4,278	591	35	595
10 Yr. Avg.	458	6,814	232	1,225	204	4,522	1,133	36	605

Five year average is from years 2005 through 2009.

Ten year average is from years 2000 through 2009.

California Water Service Company - Livermore District
Water Supply and Demand Analysis and Projections
Percentage Change in Annual Demand

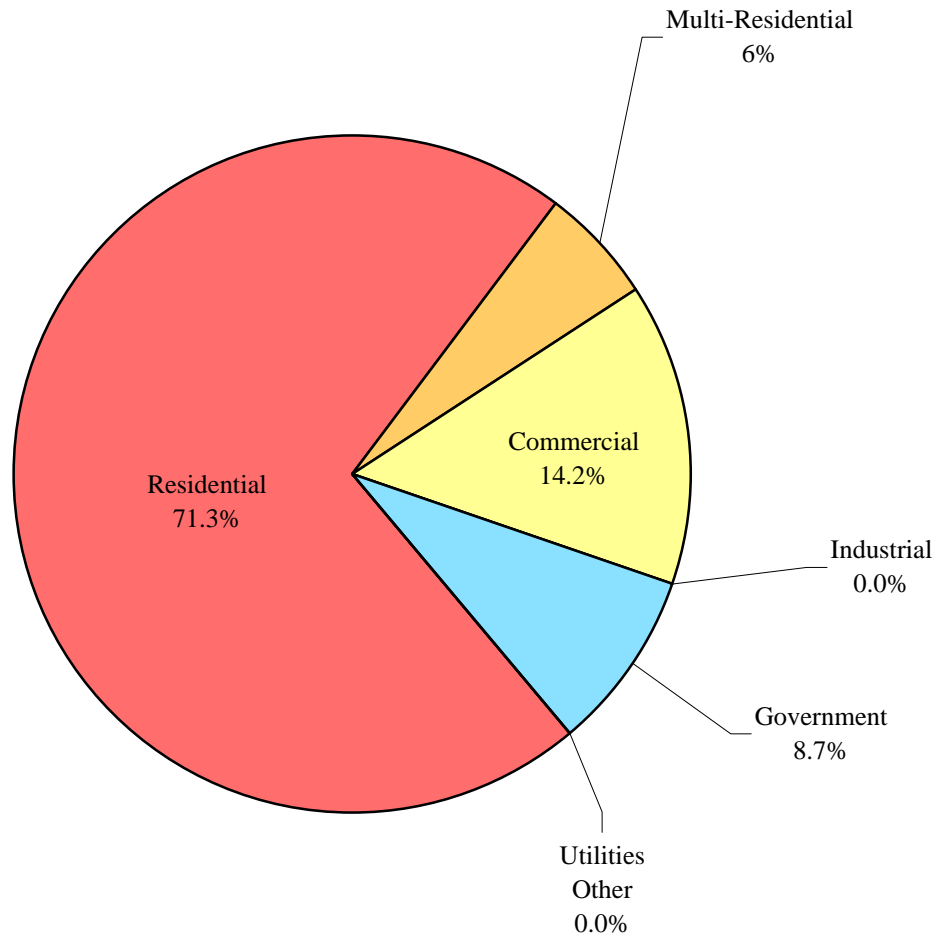
Year	Multi-						Unaccounted Water	Total
	Residential	Residential	Commercial	Industrial	Government	Other		
1981	5.13%	3.18%	9.36%	-9.62%	8.81%	58.58%	1207.32%	0.82%
1982	-8.47%	-1.66%	1.04%	17.78%	-13.19%	-28.39%	-165.12%	0.62%
1983	1.04%	9.11%	6.74%	-1.04%	1.83%	-15.77%	80.17%	4.74%
1984	12.48%	3.30%	18.27%	93.39%	23.69%	75.20%	7.90%	13.61%
1985	-1.35%	10.72%	6.52%	-58.74%	-4.25%	113.61%	-9.61%	-0.86%
1986	2.81%	19.60%	3.27%	11.30%	9.50%	-0.65%	-81.49%	-0.13%
1987	1.94%	-2.57%	12.39%	2.58%	-11.49%	-49.41%	285.43%	3.92%
1988	-4.15%	0.85%	-0.64%	-3.84%	3.88%	38.56%	58.58%	-0.39%
1989	-2.15%	0.47%	3.74%	30.23%	-7.54%	29.32%	48.15%	1.07%
1990	6.94%	19.77%	-3.45%	-14.69%	10.53%	218.27%	-95.94%	-1.58%
1991	-18.04%	-4.10%	-10.74%	-34.54%	-29.69%	32.87%	-709.70%	-19.66%
1992	12.97%	11.40%	8.85%	133.25%	21.82%	-36.24%	-135.19%	16.57%
1993	1.92%	-0.75%	-0.07%	-15.39%	0.08%	-48.30%	83.34%	1.65%
1994	4.67%	3.48%	-0.24%	-38.96%	-4.02%	56.40%	269.98%	7.08%
1995	3.25%	4.55%	-0.77%	-12.19%	8.75%	-9.42%	74.87%	6.83%
1996	8.71%	4.61%	8.78%	73.41%	2.29%	-20.12%	-75.69%	1.00%
1997	10.21%	1.93%	6.30%	-34.94%	9.20%	71.11%	121.12%	11.45%
1998	-9.87%	-3.04%	9.41%	2.17%	-22.01%	-45.55%	14.72%	-7.64%
1999	11.61%	3.82%	-13.92%	6.04%	19.18%	131.25%	59.01%	11.01%
2000	3.85%	0.83%	5.75%	-47.10%	8.20%	4.74%	-1.05%	3.85%
2001	3.82%	-4.80%	1.82%	-87.16%	-1.67%	66.34%	-89.31%	-3.09%
2002	4.04%	-6.31%	7.10%	-17.45%	7.47%	-59.88%	306.03%	5.64%
2003	-2.93%	5.51%	-1.72%	13.82%	-5.98%	10.45%	245.12%	4.29%
2004	5.92%	1.39%	2.52%	-39.29%	4.22%	-46.05%	4.92%	4.93%
2005	-2.69%	-9.90%	-23.83%	-78.82%	-13.07%	-14.70%	-36.94%	-9.08%
2006	1.64%	-1.08%	40.83%	833.33%	4.86%	0.97%	11.14%	5.60%
2007	4.07%	2.00%	-4.22%	-100.00%	8.49%	49.31%	-2.71%	3.00%
2008	-4.66%	5.74%	8.46%	0.00%	10.87%	-114.85%	6.50%	-1.26%
2009	-9.84%	-2.70%	7.56%	0.00%	-4.45%	-386.55%	-57.13%	-10.17%
2010	-7.85%	0.30%	-6.66%	0.00%	-14.00%	-69.66%	24.57%	-6.84%
5 Yr. Avg.	-2.30%	-1.19%	5.76%	130.90%	1.34%	-93.16%	-15.83%	-2.38%
10 Yr. Avg.	0.32%	-0.93%	4.43%	47.73%	1.89%	-49.02%	38.66%	0.37%

Five year average is from years 2005 through 2009.

Ten year average is from years 2000 through 2009.

Livermore

Percent of Total Sales by Type of Use (2010)



California Water Service Company - Livermore District
Water Supply and Demand Analysis and Projections
Percentage of Total Sales

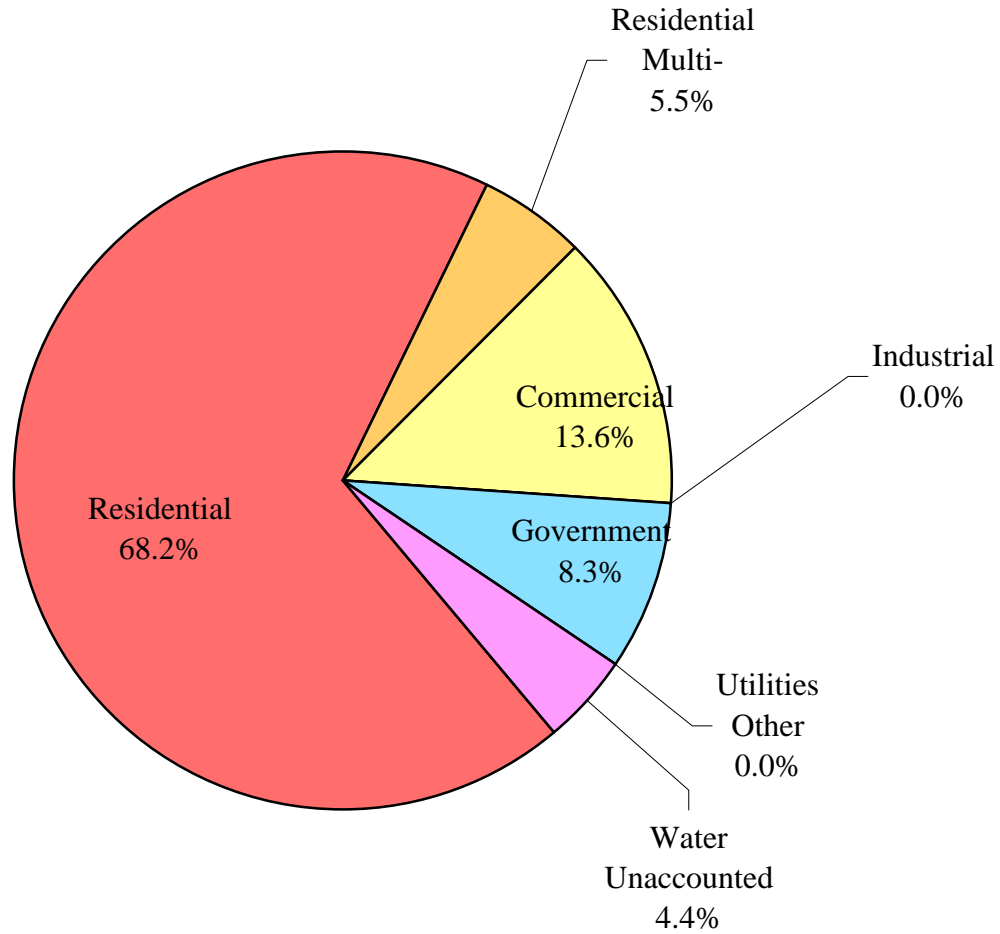
Year	Residential	Multi-Residential	Commercial	Industrial	Government	Other Utilities	Percent Total
1980	76.2%	4.0%	8.5%	0.1%	11.1%	0.1%	100.0%
1981	75.7%	3.9%	8.8%	0.1%	11.4%	0.1%	100.0%
1982	75.2%	4.2%	9.6%	0.1%	10.8%	0.1%	100.0%
1983	74.5%	4.5%	10.1%	0.1%	10.7%	0.1%	100.0%
1984	73.5%	4.1%	10.5%	0.1%	11.6%	0.1%	100.0%
1985	72.8%	4.5%	11.2%	0.1%	11.2%	0.2%	100.0%
1986	71.7%	5.2%	11.1%	0.1%	11.7%	0.2%	100.0%
1987	72.3%	5.0%	12.3%	0.1%	10.3%	0.1%	100.0%
1988	71.1%	5.2%	12.5%	0.1%	11.0%	0.2%	100.0%
1989	70.8%	5.3%	13.2%	0.1%	10.3%	0.2%	100.0%
1990	70.8%	5.9%	11.9%	0.1%	10.6%	0.7%	100.0%
1991	70.1%	6.9%	12.9%	0.1%	9.0%	1.1%	100.0%
1992	70.3%	6.8%	12.5%	0.1%	9.8%	0.6%	100.0%
1993	70.9%	6.7%	12.3%	0.1%	9.7%	0.3%	100.0%
1994	71.9%	6.7%	11.9%	0.1%	9.0%	0.5%	100.0%
1995	71.9%	6.8%	11.4%	0.0%	9.5%	0.4%	100.0%
1996	72.5%	6.6%	11.5%	0.1%	9.0%	0.3%	100.0%
1997	73.1%	6.1%	11.2%	0.0%	9.0%	0.5%	100.0%
1998	72.1%	6.5%	13.4%	0.1%	7.7%	0.3%	100.0%
1999	74.1%	6.2%	10.6%	0.1%	8.4%	0.6%	100.0%
2000	73.8%	6.0%	10.8%	0.0%	8.7%	0.6%	100.0%
2001	74.4%	5.6%	10.7%	0.0%	8.3%	1.0%	100.0%
2002	74.9%	5.0%	11.1%	0.0%	8.7%	0.4%	100.0%
2003	74.6%	5.4%	11.2%	0.0%	8.4%	0.4%	100.0%
2004	75.3%	5.3%	10.9%	0.0%	8.3%	0.2%	100.0%
2005	78.2%	5.1%	8.9%	0.0%	7.7%	0.2%	100.0%
2006	75.5%	4.8%	11.9%	0.0%	7.7%	0.2%	100.0%
2007	76.0%	4.7%	11.0%	0.0%	8.1%	0.3%	100.0%
2008	73.8%	5.0%	12.1%	0.0%	9.1%	0.0%	100.0%
2009	71.3%	5.3%	14.0%	0.0%	9.3%	0.1%	100.0%
2010	71.3%	5.7%	14.2%	0.0%	8.7%	0.0%	100.0%
5 Yr. Avg.	74.9%	5.0%	11.6%	0.0%	8.4%	0.2%	100.0%
10 Yr. Avg.	74.8%	5.2%	11.2%	0.0%	8.4%	0.3%	100.0%

Five year average is from years 2005 through 2009.

Ten year average is from years 2000 through 2009.

Livermore

Percent of Total Demand by Type of Use (2010)



California Water Service Company - Livermore District
Water Supply and Demand Analysis and Projections
Percentage of Total Demand

Year	Residential	Multi-Residential	Commercial	Industrial	Government	Other Utilities	Unaccounted Water	Percent Total
1980	76.5%	4.1%	8.5%	0.1%	11.1%	0.1%	-0.4%	100.0%
1981	79.8%	4.1%	9.3%	0.1%	12.0%	0.1%	-5.4%	100.0%
1982	72.6%	4.1%	9.3%	0.1%	10.4%	0.1%	3.5%	100.0%
1983	70.0%	4.2%	9.5%	0.1%	10.1%	0.1%	6.0%	100.0%
1984	69.3%	3.8%	9.9%	0.1%	11.0%	0.1%	5.7%	100.0%
1985	69.0%	4.3%	10.6%	0.1%	10.6%	0.2%	5.2%	100.0%
1986	71.0%	5.1%	11.0%	0.1%	11.6%	0.2%	1.0%	100.0%
1987	69.7%	4.8%	11.9%	0.1%	9.9%	0.1%	3.6%	100.0%
1988	67.0%	4.9%	11.8%	0.1%	10.3%	0.2%	5.7%	100.0%
1989	64.9%	4.8%	12.1%	0.1%	9.4%	0.2%	8.4%	100.0%
1990	70.5%	5.9%	11.9%	0.1%	10.6%	0.7%	0.3%	100.0%
1991	71.9%	7.0%	13.2%	0.1%	9.3%	1.1%	-2.6%	100.0%
1992	69.7%	6.7%	12.4%	0.1%	9.7%	0.6%	0.8%	100.0%
1993	69.9%	6.6%	12.1%	0.1%	9.6%	0.3%	1.4%	100.0%
1994	68.3%	6.3%	11.3%	0.1%	8.6%	0.4%	4.9%	100.0%
1995	66.1%	6.2%	10.5%	0.0%	8.7%	0.4%	8.1%	100.0%
1996	71.1%	6.4%	11.3%	0.1%	8.8%	0.3%	1.9%	100.0%
1997	70.3%	5.9%	10.8%	0.0%	8.6%	0.5%	3.9%	100.0%
1998	68.6%	6.2%	12.8%	0.0%	7.3%	0.3%	4.8%	100.0%
1999	69.0%	5.8%	9.9%	0.0%	7.8%	0.6%	6.9%	100.0%
2000	69.0%	5.6%	10.1%	0.0%	8.2%	0.6%	6.6%	100.0%
2001	73.9%	5.5%	10.6%	0.0%	8.3%	1.0%	0.7%	100.0%
2002	72.8%	4.9%	10.8%	0.0%	8.4%	0.4%	2.8%	100.0%
2003	67.7%	4.9%	10.1%	0.0%	7.6%	0.4%	9.2%	100.0%
2004	68.4%	4.8%	9.9%	0.0%	7.5%	0.2%	9.2%	100.0%
2005	73.2%	4.7%	8.3%	0.0%	7.2%	0.2%	6.4%	100.0%
2006	70.4%	4.4%	11.1%	0.0%	7.2%	0.2%	6.7%	100.0%
2007	71.2%	4.4%	10.3%	0.0%	7.5%	0.3%	6.3%	100.0%
2008	68.7%	4.7%	11.3%	0.0%	8.5%	0.0%	6.8%	100.0%
2009	69.0%	5.1%	13.5%	0.0%	9.0%	0.1%	3.3%	100.0%
2010	68.2%	5.5%	13.6%	0.0%	8.3%	0.0%	4.4%	100.0%
5 Yr. Avg.	70.5%	4.7%	10.9%	0.0%	7.9%	0.1%	5.9%	100.0%
10 Yr. Avg.	70.4%	4.9%	10.6%	0.0%	7.9%	0.3%	5.8%	100.0%

Five year average is from years 2005 through 2009.

Ten year average is from years 2000 through 2009.

California Water Service Company - Livermore District
Water Supply and Demand Analysis and Projections

Scenario #1: Based on Maintaining Growth at the 10-Year Master Plan 5-Year Growth Rate and Low Average High Demand per Service for each Customer Class.

Summary of Historical Growth Rate from Worksheet 2			
Customer Type	5 Yr. Avg. Historical Growth Rate	Individual Growth Rate Selected	Notes
Single Family Residential	0.280%	0.142%	Rate adjusted to reflect service count in Master Plan
Multi Family Residential	0.266%	7.840%	Rate adjusted to reflect service count in Master Plan
Commercial	3.048%	3.990%	Rate adjusted to reflect service count in Master Plan
Industrial	-20.000%	7.000%	Rate adjusted to reflect service count in Master Plan
Government	6.076%	0.220%	Rate adjusted at same rate as Master Plan but total is greater because of reclassification
Other	-11.646%	5.550%	Rate adjusted to reflect service count in Master Plan
Overall	0.470%	0.408%	0.000% Growth rate assumed after 2025 buildout

Summary of Lowest Demand per Service from Worksheets 5 and 6									
Demand/Serv. Units	Multi-Residential						Total Other	Unaccounted Total Serv.	Combined Demand/Serv.
	Residential	(service)	(unit)	Commercial	Industrial	Government			
Gal/Service/Yr	122,612	2,110,225	71,972	434,120	253,739	1,643,252	0	696	159,454
AF/Service/Yr	0.376	6.476	0.221	1.332	0.779	5.043	0.000	0.002	0.489
Gal/Service/Day	336	5,781	197	1,189	695	4,502	0	2	437

California Water Service Company - Livermore District

Water Supply and Demand Analysis and Projections

Worksheet 10

30-year projection Summary

Scenario #1: Based on Maintaining Growth at the 10-Year Master Plan 5-Year Growth Rate and Low Average High Demand per Service for each Customer Class.

Customer Type	Projected Services 2010	Projected Services 2015	Projected Services 2020	Projected Services 2025	Projected Services 2030	Projected Services 2035	Projected Services 2040	Services projected to be added from 2010 - 2040
Single Family Residential	16,466	16,583	16,701	16,820	16,820	16,820	16,820	353
Multi Family Residential	82	120	174	254	254	254	254	172
Commercial	1,065	1,295	1,575	1,915	1,915	1,915	1,915	850
Industrial	1	1	2	3	3	3	3	2
Government	235	237	240	242	242	242	242	8
Other	19	25	33	43	43	43	43	24
Total	17,868	18,261	18,724	19,277	19,277	19,277	19,277	1,409

Customer Type	Projected Demand 2010 (ccf)	Projected Demand 2015 (ccf)	Projected Demand 2020 (ccf)	Projected Demand 2025 (ccf)	Projected Demand 2030 (ccf)	Projected Demand 2035 (ccf)	Projected Demand 2040 (ccf)	Projected demand to be added from 2010 - 2040 (ccf)
Single Family Residential	2,698,953	2,718,115	2,737,414	2,756,850	2,756,850	2,756,850	2,756,850	57,897
Multi Family Residential	231,200	337,200	491,799	717,277	717,277	717,277	717,277	486,076
Commercial	617,971	751,495	913,869	1,111,327	1,111,327	1,111,327	1,111,327	493,356
Industrial	339	476	667	936	936	936	936	597
Government	515,159	520,850	526,605	532,423	532,423	532,423	532,423	17,265
Other	0	0	0	0	0	0	0	0
Unaccounted	16,628	16,994	17,425	17,939	17,939	17,939	17,939	1,311
Total	4,080,249	4,345,130	4,687,779	5,136,751	5,136,751	5,136,751	5,136,751	1,056,502

Customer Type	Projected Demand 2010 (AF)	Projected Demand 2015 (AF)	Projected Demand 2020 (AF)	Projected Demand 2025 (AF)	Projected Demand 2030 (AF)	Projected Demand 2035 (AF)	Projected Demand 2040 (AF)	Projected demand to be added from 2010 - 2040 (AF)
Single Family Residential	6,196	6,240	6,284	6,329	6,329	6,329	6,329	133
Multi Family Residential	531	774	1,129	1,647	1,647	1,647	1,647	1,116
Commercial	1,419	1,725	2,098	2,551	2,551	2,551	2,551	1,133
Industrial	1	1	2	2	2	2	2	1
Government	1,183	1,196	1,209	1,222	1,222	1,222	1,222	40
Other	0	0	0	0	0	0	0	0
Unaccounted	38	39	40	41	41	41	41	3
Total	9,367	9,975	10,762	11,792	11,792	11,792	11,792	2,425

California Water Service Company - Livermore District

Water Supply and Demand Analysis and Projections

2000's Projections

Scenario #1: Based on Maintaining Growth at the 10-Year Master Plan 5-Year Growth Rate and Low Average High Demand per Service for each Customer Class.

Customer Type	Actual Services 2001	Actual Services 2002	Actual Services 2003	Actual Services 2004	Actual Services 2005	Actual Services 2006	Actual Services 2007	Actual Services 2008	Actual Services 2009	Projected Services 2010
Residential	15,461	15,718	15,755	16,216	16,457	16,559	16,596	16,496	16,443	16,466
Multi-Res.	75	75	75	75	75	75	75	76	76	82
Commercial	840	859	873	882	903	914	937	998	1,024	1,065
Industrial	2	1	1	1	1	1	1	1	0	1
Government	178	177	176	176	174	180	180	209	234	235
Other	30	36	37	34	31	26	26	23	18	19
Total	16,586	16,866	16,917	17,384	17,641	17,755	17,815	17,803	17,795	17,868

Customer Type	Demand 2001(ccf)	Demand 2002(ccf)	Demand 2003(ccf)	Demand 2004(ccf)	Demand 2005(ccf)	Demand 2006(ccf)	Demand 2007(ccf)	Demand 2008(ccf)	Demand 2009(ccf)	Demand 2010(ccf)
Residential	2,534,179	2,576,303	2,582,368	2,657,984	2,697,363	2,714,150	2,720,214	2,703,823	2,695,136	2,698,953
Multi-Res.	211,571	211,571	211,571	211,571	211,571	211,571	211,571	214,392	214,392	231,200
Commercial	487,479	498,505	506,630	511,853	524,040	530,423	543,771	579,171	594,260	617,971
Industrial	678	339	339	339	339	339	339	339	0	339
Government	391,013	388,816	386,619	386,619	382,226	395,406	395,406	459,110	514,028	515,159
Other	0	0	0	0	0	0	0	0	0	0
Unaccounted	15,435	15,696	15,743	16,178	16,416	16,523	16,579	16,568	16,560	16,628
Total	3,640,355	3,691,230	3,703,270	3,784,544	3,831,955	3,868,412	3,887,880	3,973,404	4,034,376	4,080,249

Customer Type	Demand 2001(AF)	Demand 2002(AF)	Demand 2003(AF)	Demand 2004(AF)	Demand 2005(AF)	Demand 2006(AF)	Demand 2007(AF)	Demand 2008(AF)	Demand 2009(AF)	Demand 2010(AF)
Residential	5,818	5,914	5,928	6,102	6,192	6,231	6,245	6,207	6,187	6,196
Multi-Res.		486	486	486	486	486	486	492	492	531
Commercial	1,119	1,144	1,163	1,175	1,203	1,218	1,248	1,330	1,364	1,419
Industrial	2	1	1	1	1	1	1	1	0	1
Government	898	893	888	888	877	908	908	1,054	1,180	1,183
Other	0	0	0	0	0	0	0	0	0	0
Unaccounted	35	36	36	37	38	38	38	38	38	38
Total	7,871	8,474	8,502	8,688	8,797	8,881	8,925	9,122	9,262	9,367

California Water Service Company - Livermore District

Worksheet 10

Water Supply and Demand Analysis and Projections

2010's Projections

Scenario #1: Based on Maintaining Growth at the 10-Year Master Plan 5-Year Growth Rate and Low Average High Demand per Service for each Customer Class.

Customer Type	Projected Services 2011	Projected Services 2012	Projected Services 2013	Projected Services 2014	Projected Services 2015	Projected Services 2016	Projected Services 2017	Projected Services 2018	Projected Services 2019	Projected Services 2020
Residential	16,490	16,513	16,536	16,560	16,583	16,607	16,630	16,654	16,677	16,701
Multi-Res.	88	95	103	111	120	129	139	150	162	174
Commercial	1,107	1,152	1,197	1,245	1,295	1,347	1,400	1,456	1,514	1,575
Industrial	1	1	1	1	1	2	2	2	2	2
Government	235	236	236	237	237	238	238	239	239	240
Other	20	21	22	24	25	26	28	29	31	33
Total	17,941	18,018	18,096	18,177	18,261	18,348	18,437	18,530	18,625	18,724

Customer Type	Demand 2011(ccf)	Demand 2012(ccf)	Demand 2013(ccf)	Demand 2014(ccf)	Demand 2015(ccf)	Demand 2016(ccf)	Demand 2017(ccf)	Demand 2018(ccf)	Demand 2019(ccf)	Demand 2020(ccf)
Residential	2,702,774	2,706,601	2,710,434	2,714,272	2,718,115	2,721,964	2,725,819	2,729,678	2,733,544	2,737,414
Multi-Res.	249,327	268,874	289,953	312,686	337,200	363,637	392,146	422,890	456,045	491,799
Commercial	642,628	668,269	694,933	722,661	751,495	781,479	812,660	845,085	878,804	913,869
Industrial	363	388	416	445	476	509	545	583	624	667
Government	516,292	517,428	518,566	519,707	520,850	521,996	523,145	524,296	525,449	526,605
Other	0	0	0	0	0	0	0	0	0	0
Unaccounted	16,696	16,767	16,840	16,916	16,994	17,074	17,158	17,244	17,333	17,425
Total	4,128,080	4,178,327	4,231,142	4,286,686	4,345,130	4,406,660	4,471,472	4,539,776	4,611,798	4,687,779

Customer Type	Demand 2011(AF)	Demand 2012(AF)	Demand 2013(AF)	Demand 2014(AF)	Demand 2015(AF)	Demand 2016(AF)	Demand 2017(AF)	Demand 2018(AF)	Demand 2019(AF)	Demand 2020(AF)
Residential	6,205	6,214	6,222	6,231	6,240	6,249	6,258	6,267	6,275	6,284
Multi-Res.	572	617	666	718	774	835	900	971	1,047	1,129
Commercial	1,475	1,534	1,595	1,659	1,725	1,794	1,866	1,940	2,017	2,098
Industrial	1	1	1	1	1	1	1	1	1	2
Government	1,185	1,188	1,190	1,193	1,196	1,198	1,201	1,204	1,206	1,209
Other	0	0	0	0	0	0	0	0	0	0
Unaccounted	38	38	39	39	39	39	39	40	40	40
Total	9,477	9,592	9,713	9,841	9,975	10,116	10,265	10,422	10,587	10,762

California Water Service Company - Livermore District

Water Supply and Demand Analysis and Projections

2020's Projections

Scenario #1: Based on Maintaining Growth at the 10-Year Master Plan 5-Year Growth Rate and Low Average High Demand per Service for each Customer Class.

Customer Type	Projected Services 2021	Projected Services 2022	Projected Services 2023	Projected Services 2024	Projected Services 2025	Projected Services 2026	Projected Services 2027	Projected Services 2028	Projected Services 2029	Projected Services 2030
Residential	16,725	16,748	16,772	16,796	16,820	16,820	16,820	16,820	16,820	16,820
Multi-Res.	188	203	219	236	254	254	254	254	254	254
Commercial	1,638	1,703	1,771	1,842	1,915	1,915	1,915	1,915	1,915	1,915
Industrial	2	2	2	3	3	3	3	3	3	3
Government	240	241	241	242	242	242	242	242	242	242
Other	34	36	38	40	43	43	43	43	43	43
Total	18,827	18,933	19,044	19,158	19,277	19,277	19,277	19,277	19,277	19,277

2021-2040 residential growth tapered to account for build-out conditions.

Customer Type	Demand 2021(ccf)	Demand 2022(ccf)	Demand 2023(ccf)	Demand 2024(ccf)	Demand 2025(ccf)	Demand 2026(ccf)	Demand 2027(ccf)	Demand 2028(ccf)	Demand 2029(ccf)	Demand 2030(ccf)
Residential	2,741,290	2,745,172	2,749,059	2,752,952	2,756,850	2,756,850	2,756,850	2,756,850	2,756,850	2,756,850
Multi-Res.	530,356	571,936	616,775	665,131	717,277	717,277	717,277	717,277	717,277	717,277
Commercial	950,332	988,250	1,027,681	1,068,686	1,111,327	1,111,327	1,111,327	1,111,327	1,111,327	1,111,327
Industrial	714	764	817	875	936	936	936	936	936	936
Government	527,763	528,925	530,088	531,254	532,423	532,423	532,423	532,423	532,423	532,423
Other	0	0	0	0	0	0	0	0	0	0
Unaccounted	17,520	17,619	17,722	17,829	17,939	17,939	17,939	17,939	17,939	17,939
Total	4,767,976	4,852,666	4,942,144	5,036,726	5,136,751	5,136,751	5,136,751	5,136,751	5,136,751	5,136,751

Customer Type	Demand 2021(AF)	Demand 2022(AF)	Demand 2023(AF)	Demand 2024(AF)	Demand 2025(AF)	Demand 2026(AF)	Demand 2027(AF)	Demand 2028(AF)	Demand 2029(AF)	Demand 2030(AF)
Residential	6,293	6,302	6,311	6,320	6,329	6,329	6,329	6,329	6,329	6,329
Multi-Res.	1,218	1,313	1,416	1,527	1,647	1,647	1,647	1,647	1,647	1,647
Commercial	2,182	2,269	2,359	2,453	2,551	2,551	2,551	2,551	2,551	2,551
Industrial	2	2	2	2	2	2	2	2	2	2
Government	1,212	1,214	1,217	1,220	1,222	1,222	1,222	1,222	1,222	1,222
Other	0	0	0	0	0	0	0	0	0	0
Unaccounted	40	40	41	41	41	41	41	41	41	41
Total	10,946	11,140	11,346	11,563	11,792	11,792	11,792	11,792	11,792	11,792

*Note: Zero growth assumed after 2025 buildout

California Water Service Company - Livermore District

Water Supply and Demand Analysis and Projections

2030's Projections

Scenario #1: Based on Maintaining Growth at the 10-Year Master Plan 5-Year Growth Rate and Low Average High Demand per Service for each Customer Class.

Customer Type	Projected Services 2031	Projected Services 2032	Projected Services 2033	Projected Services 2034	Projected Services 2035	Projected Services 2036	Projected Services 2037	Projected Services 2038	Projected Services 2039	Projected Services 2040
Residential	16,820	16,820	16,820	16,820	16,820	16,820	16,820	16,820	16,820	16,820
Multi-Res.	254	254	254	254	254	254	254	254	254	254
Commercial	1,915	1,915	1,915	1,915	1,915	1,915	1,915	1,915	1,915	1,915
Industrial	3	3	3	3	3	3	3	3	3	3
Government	242	242	242	242	242	242	242	242	242	242
Other	43	43	43	43	43	43	43	43	43	43
Total	19,277	19,277	19,277	19,277	19,277	19,277	19,277	19,277	19,277	19,277

2021-2030 residential growth tapered to account for build-out conditions.

Customer Type	Demand 2031(ccf)	Demand 2032(ccf)	Demand 2033(ccf)	Demand 2034(ccf)	Demand 2035(ccf)	Demand 2036(ccf)	Demand 2037(ccf)	Demand 2038(ccf)	Demand 2039(ccf)	Demand 2040(ccf)
Residential	2,756,850	2,756,850	2,756,850	2,756,850	2,756,850	2,756,850	2,756,850	2,756,850	2,756,850	2,756,850
Multi-Res.	717,277	717,277	717,277	717,277	717,277	717,277	717,277	717,277	717,277	717,277
Commercial	1,111,327	1,111,327	1,111,327	1,111,327	1,111,327	1,111,327	1,111,327	1,111,327	1,111,327	1,111,327
Industrial	936	936	936	936	936	936	936	936	936	936
Government	532,423	532,423	532,423	532,423	532,423	532,423	532,423	532,423	532,423	532,423
Other	0	0	0	0	0	0	0	0	0	0
Unaccounted	17,939	17,939	17,939	17,939	17,939	17,939	17,939	17,939	17,939	17,939
Total	5,136,751	5,136,751	5,136,751	5,136,751	5,136,751	5,136,751	5,136,751	5,136,751	5,136,751	5,136,751

Customer Type	Demand 2031(AF)	Demand 2032(AF)	Demand 2033(AF)	Demand 2034(AF)	Demand 2035(AF)	Demand 2036(AF)	Demand 2037(AF)	Demand 2038(AF)	Demand 2039(AF)	Demand 2040(AF)
Residential	6,329	6,329	6,329	6,329	6,329	6,329	6,329	6,329	6,329	6,329
Multi-Res.	1,647	1,647	1,647	1,647	1,647	1,647	1,647	1,647	1,647	1,647
Commercial	2,551	2,551	2,551	2,551	2,551	2,551	2,551	2,551	2,551	2,551
Industrial	2	2	2	2	2	2	2	2	2	2
Government	1,222	1,222	1,222	1,222	1,222	1,222	1,222	1,222	1,222	1,222
Other	0	0	0	0	0	0	0	0	0	0
Unaccounted	41	41	41	41	41	41	41	41	41	41
Total	11,792	11,792	11,792	11,792	11,792	11,792	11,792	11,792	11,792	11,792

*Note: Zero growth assumed after 2025 buildout

California Water Service Company - Livermore District
Water Supply and Demand Analysis and Projections

Scenario #2: Based on Maintaining Growth at the 10-Year Master Plan 5-Year Growth Rate and Low Average High Demand per Service for each Customer Class.

Summary of Historical Growth Rate from Worksheet 2			
Customer Type	5 Yr. Avg. Historical Growth Rate	Individual Growth Rate Selected	Notes
Single Family Residential	0.280%	0.142%	Rate adjusted to reflect service count in Master Plan
Multi Family Residential	0.266%	7.840%	Rate adjusted to reflect service count in Master Plan
Commercial	3.048%	3.990%	Rate adjusted to reflect service count in Master Plan
Industrial	-20.000%	7.000%	Rate adjusted to reflect service count in Master Plan
Government	6.076%	0.220%	Rate adjusted at same rate as Master Plan but total is greater because of reclassification
Other	-11.646%	5.550%	Rate adjusted to reflect service count in Master Plan
Overall	0.470%	0.408%	0.000% Growth rate assumed after 2025 buildout

Summary of Average Demand per Service from Worksheets 5 and 6									
Demand/Serv. Units	Multi-Residential			Commercial	Industrial	Government	Total Other	Unaccounted Total Serv.	Combined Demand/Serv.
	Residential	(service)	(unit)						
Gal/Service/Yr	144,588	2,524,366	88,970	454,167	447,335	1,996,579	812,919	16,609	205,194
AF/Service/Yr	0.444	7.747	0.273	1.394	1.373	6.127	2.495	0.051	0.630
Gal/Service/Day	396	6,916	244	1,244	1,226	5,470	2,227	46	562

California Water Service Company - Livermore District

Water Supply and Demand Analysis and Projections

30-year projection Summary

Scenario #2: Based on Maintaining Growth at the 10-Year Master Plan 5-Year Growth Rate and Low Average High Demand per Service for each Customer Class.

Customer Type	Projected Services 2010	Projected Services 2015	Projected Services 2020	Projected Services 2025	Projected Services 2030	Projected Services 2035	Projected Services 2040	Services projected to be added from 2010 - 2040
Single Family Residential	16,466	16,583	16,701	16,820	16,820	16,820	16,820	353
Multi Family Residential	82	120	174	254	254	254	254	172
Commercial	1,065	1,295	1,575	1,915	1,915	1,915	1,915	850
Industrial	1	1	2	3	3	3	3	2
Government	235	237	240	242	242	242	242	8
Other	19	25	33	43	43	43	43	24
Total	17,868	18,261	18,724	19,277	19,277	19,277	19,277	1,409

Customer Type	Projected Demand 2010 (ccf)	Projected Demand 2015 (ccf)	Projected Demand 2020 (ccf)	Projected Demand 2025 (ccf)	Projected Demand 2030 (ccf)	Projected Demand 2035 (ccf)	Projected Demand 2040 (ccf)	Projected demand to be added from 2010 - 2040 (ccf)
Single Family Residential	3,182,690	3,205,288	3,228,046	3,250,965	3,250,965	3,250,965	3,250,965	68,275
Multi Family Residential	276,575	403,378	588,317	858,046	858,046	858,046	858,046	581,471
Commercial	646,508	786,198	956,070	1,162,646	1,162,646	1,162,646	1,162,646	516,138
Industrial	598	839	1,176	1,650	1,650	1,650	1,650	1,052
Government	625,926	632,842	639,834	646,903	646,903	646,903	646,903	20,977
Other	20,646	27,048	35,435	46,421	46,421	46,421	46,421	25,775
Unaccounted	396,709	405,445	415,730	427,993	427,993	427,993	427,993	31,284
Total	5,149,653	5,461,037	5,864,607	6,394,624	6,394,624	6,394,624	6,394,624	1,244,971

Customer Type	Projected Demand 2010 (AF)	Projected Demand 2015 (AF)	Projected Demand 2020 (AF)	Projected Demand 2025 (AF)	Projected Demand 2030 (AF)	Projected Demand 2035 (AF)	Projected Demand 2040 (AF)	Projected demand to be added from 2010 - 2040 (AF)
Single Family Residential	7,307	7,358	7,411	7,463	7,463	7,463	7,463	157
Multi Family Residential	635	926	1,351	1,970	1,970	1,970	1,970	1,335
Commercial	1,484	1,805	2,195	2,669	2,669	2,669	2,669	1,185
Industrial	1	2	3	4	4	4	4	2
Government	1,437	1,453	1,469	1,485	1,485	1,485	1,485	48
Other	47	62	81	107	107	107	107	59
Unaccounted	911	931	954	983	983	983	983	72
Total	11,822	12,537	13,463	14,680	14,680	14,680	14,680	2,858

California Water Service Company - Livermore District
Water Supply and Demand Analysis and Projections

Scenario #2: Based on Maintaining Growth at the 10-Year Master Plan 5-Year Growth Rate and Low Average High Demand per Service for each Customer Class.

Customer Type	Actual Services 2001	Actual Services 2002	Actual Services 2003	Actual Services 2004	Actual Services 2005	Actual Services 2006	Actual Services 2007	Actual Services 2008	Actual Services 2009	Projected Services 2010
Residential	15,461	15,718	15,755	16,216	16,457	16,559	16,596	16,496	16,443	16,466
Multi-Res.	75	75	75	75	75	75	75	76	76	82
Commercial	840	859	873	882	903	914	937	998	1,024	1,065
Industrial	2	1	1	1	1	1	1	1	0	1
Government	178	177	176	176	174	180	180	209	234	235
Other	30	36	37	34	31	26	26	23	18	19
Total	16,586	16,866	16,917	17,384	17,641	17,755	17,815	17,803	17,795	17,868

Customer Type	Demand 2001(ccf)	Demand 2002(ccf)	Demand 2003(ccf)	Demand 2004(ccf)	Demand 2005(ccf)	Demand 2006(ccf)	Demand 2007(ccf)	Demand 2008(ccf)	Demand 2009(ccf)	Demand 2010(ccf)
Residential	2,988,384	3,038,058	3,045,210	3,134,379	3,180,816	3,200,611	3,207,763	3,188,434	3,178,190	3,182,690
Multi-Res.	253,093	253,093	253,093	253,093	253,093	253,093	253,093	256,468	256,468	276,575
Commercial	509,990	521,525	530,025	535,489	548,239	554,918	568,882	605,917	621,702	646,508
Industrial	1,196	598	598	598	598	598	598	598	0	598
Government	475,087	472,418	469,749	469,749	464,411	480,425	480,425	557,827	624,552	625,926
Other	32,601	39,122	40,208	36,948	33,688	28,254	28,254	24,994	19,561	20,646
Unaccounted	368,254	374,471	375,603	385,979	391,669	394,209	395,541	395,275	395,097	396,709
Total	4,628,605	4,699,285	4,714,486	4,816,235	4,872,513	4,912,108	4,934,556	5,029,512	5,095,570	5,149,653

Customer Type	Demand 2001(AF)	Demand 2002(AF)	Demand 2003(AF)	Demand 2004(AF)	Demand 2005(AF)	Demand 2006(AF)	Demand 2007(AF)	Demand 2008(AF)	Demand 2009(AF)	Demand 2010(AF)
Residential	6,860	6,974	6,991	7,196	7,302	7,348	7,364	7,320	7,296	7,307
Multi-Res.	581	581	581	581	581	581	581	589	589	635
Commercial	1,171	1,197	1,217	1,229	1,259	1,274	1,306	1,391	1,427	1,484
Industrial	3	1	1	1	1	1	1	1	0	1
Government	1,091	1,085	1,078	1,078	1,066	1,103	1,103	1,281	1,434	1,437
Other	75	90	92	85	77	65	65	57	45	47
Unaccounted	845	860	862	886	899	905	908	907	907	911
Total	10,626	10,788	10,823	11,057	11,186	11,277	11,328	11,546	11,698	11,822

California Water Service Company - Livermore District

Water Supply and Demand Analysis and Projections

2010's Projections

Scenario #2: Based on Maintaining Growth at the 10-Year Master Plan 5-Year Growth Rate and Low Average High Demand per Service for each Customer Class.

Customer Type	Projected Services 2011	Projected Services 2012	Projected Services 2013	Projected Services 2014	Projected Services 2015	Projected Services 2016	Projected Services 2017	Projected Services 2018	Projected Services 2019	Projected Services 2020
Residential	16,490	16,513	16,536	16,560	16,583	16,607	16,630	16,654	16,677	16,701
Multi-Res.	88	95	103	111	120	129	139	150	162	174
Commercial	1,107	1,152	1,197	1,245	1,295	1,347	1,400	1,456	1,514	1,575
Industrial	1	1	1	1	1	2	2	2	2	2
Government	235	236	236	237	237	238	238	239	239	240
Other	20	21	22	24	25	26	28	29	31	33
Total	17,941	18,018	18,096	18,177	18,261	18,348	18,437	18,530	18,625	18,724

Customer Type	Demand 2011(ccf)	Demand 2012(ccf)	Demand 2013(ccf)	Demand 2014(ccf)	Demand 2015(ccf)	Demand 2016(ccf)	Demand 2017(ccf)	Demand 2018(ccf)	Demand 2019(ccf)	Demand 2020(ccf)
Residential	3,187,197	3,191,710	3,196,230	3,200,755	3,205,288	3,209,826	3,214,372	3,218,923	3,223,481	3,228,046
Multi-Res.	298,258	321,641	346,858	374,052	403,378	435,002	469,106	505,884	545,546	588,317
Commercial	672,304	699,128	727,024	756,032	786,198	817,567	850,188	884,110	919,386	956,070
Industrial	640	685	733	784	839	897	960	1,027	1,099	1,176
Government	627,303	628,683	630,066	631,453	632,842	634,234	635,629	637,028	638,429	639,834
Other	21,792	23,002	24,278	25,626	27,048	28,549	30,134	31,806	33,571	35,435
Unaccounted	398,349	400,041	401,785	403,586	405,445	407,366	409,352	411,406	413,530	415,730
Total	5,205,844	5,264,890	5,326,974	5,392,287	5,461,037	5,533,442	5,609,741	5,690,185	5,775,044	5,864,607

Customer Type	Demand 2011(AF)	Demand 2012(AF)	Demand 2013(AF)	Demand 2014(AF)	Demand 2015(AF)	Demand 2016(AF)	Demand 2017(AF)	Demand 2018(AF)	Demand 2019(AF)	Demand 2020(AF)
Residential	7,317	7,327	7,338	7,348	7,358	7,369	7,379	7,390	7,400	7,411
Multi-Res.	685	738	796	859	926	999	1,077	1,161	1,252	1,351
Commercial	1,543	1,605	1,669	1,736	1,805	1,877	1,952	2,030	2,111	2,195
Industrial	1	2	2	2	2	2	2	2	3	3
Government	1,440	1,443	1,446	1,450	1,453	1,456	1,459	1,462	1,466	1,469
Other	50	53	56	59	62	66	69	73	77	81
Unaccounted	914	918	922	927	931	935	940	944	949	954
Total	11,951	12,087	12,229	12,379	12,537	12,703	12,878	13,063	13,258	13,463

California Water Service Company - Livermore District Water Supply and Demand Analysis and Projections

Scenario #2: Based on Maintaining Growth at the 10-Year Master Plan 5-Year Growth Rate and Low Average High Demand per Service for each Customer Class.

Customer Type	Projected Services 2021	Projected Services 2022	Projected Services 2023	Projected Services 2024	Projected Services 2025	Projected Services 2026	Projected Services 2027	Projected Services 2028	Projected Services 2029	Projected Services 2030
Residential	16,725	16,748	16,772	16,796	16,820	16,820	16,820	16,820	16,820	16,820
Multi-Res.	188	203	219	236	254	254	254	254	254	254
Commercial	1,638	1,703	1,771	1,842	1,915	1,915	1,915	1,915	1,915	1,915
Industrial	2	2	2	3	3	3	3	3	3	3
Government	240	241	241	242	242	242	242	242	242	242
Other	34	36	38	40	43	43	43	43	43	43
Total	18,827	18,933	19,044	19,158	19,277	19,277	19,277	19,277	19,277	19,277

2021-2030 residential growth tapered to account for build-out conditions.

Customer Type	Demand 2021(ccf)	Demand 2022(ccf)	Demand 2023(ccf)	Demand 2024(ccf)	Demand 2025(ccf)	Demand 2026(ccf)	Demand 2027(ccf)	Demand 2028(ccf)	Demand 2029(ccf)	Demand 2030(ccf)
Residential	3,232,616	3,237,194	3,241,778	3,246,368	3,250,965	3,250,965	3,250,965	3,250,965	3,250,965	3,250,965
Multi-Res.	634,441	684,181	737,820	795,666	858,046	858,046	858,046	858,046	858,046	858,046
Commercial	994,217	1,033,886	1,075,138	1,118,036	1,162,646	1,162,646	1,162,646	1,162,646	1,162,646	1,162,646
Industrial	1,259	1,347	1,441	1,542	1,650	1,650	1,650	1,650	1,650	1,650
Government	641,241	642,652	644,066	645,483	646,903	646,903	646,903	646,903	646,903	646,903
Other	37,401	39,477	41,668	43,980	46,421	46,421	46,421	46,421	46,421	46,421
Unaccounted	418,009	420,370	422,818	425,358	427,993	427,993	427,993	427,993	427,993	427,993
Total	5,959,184	6,059,107	6,164,730	6,276,433	6,394,624	6,394,624	6,394,624	6,394,624	6,394,624	6,394,624

Customer Type	Demand 2021(AF)	Demand 2022(AF)	Demand 2023(AF)	Demand 2024(AF)	Demand 2025(AF)	Demand 2026(AF)	Demand 2027(AF)	Demand 2028(AF)	Demand 2029(AF)	Demand 2030(AF)
Residential	7,421	7,432	7,442	7,453	7,463	7,463	7,463	7,463	7,463	7,463
Multi-Res.	1,456	1,571	1,694	1,827	1,970	1,970	1,970	1,970	1,970	1,970
Commercial	2,282	2,373	2,468	2,567	2,669	2,669	2,669	2,669	2,669	2,669
Industrial	3	3	3	4	4	4	4	4	4	4
Government	1,472	1,475	1,479	1,482	1,485	1,485	1,485	1,485	1,485	1,485
Other	86	91	96	101	107	107	107	107	107	107
Unaccounted	960	965	971	976	983	983	983	983	983	983
Total	13,680	13,910	14,152	14,409	14,680	14,680	14,680	14,680	14,680	14,680

*Note: Zero growth assumed after 2025 buildout

California Water Service Company - Livermore District

Water Supply and Demand Analysis and Projections

2030's Projections

Scenario #2: Based on Maintaining Growth at the

10-Year

Master Plan

5-Year

Growth Rate and

Low

Average

High

Demand per Service for each Customer Class.

Customer Type	Projected Services 2031	Projected Services 2032	Projected Services 2033	Projected Services 2034	Projected Services 2035	Projected Services 2036	Projected Services 2037	Projected Services 2038	Projected Services 2039	Projected Services 2040
Residential	16,820	16,820	16,820	16,820	16,820	16,820	16,820	16,820	16,820	16,820
Multi-Res.	254	254	254	254	254	254	254	254	254	254
Commercial	1,915	1,915	1,915	1,915	1,915	1,915	1,915	1,915	1,915	1,915
Industrial	3	3	3	3	3	3	3	3	3	3
Government	242	242	242	242	242	242	242	242	242	242
Other	43	43	43	43	43	43	43	43	43	43
Total	19,277	19,277	19,277	19,277	19,277	19,277	19,277	19,277	19,277	19,277

2021-2030 residential growth tapered to account for build-out conditions.

Customer Type	Demand 2031(ccf)	Demand 2032(ccf)	Demand 2033(ccf)	Demand 2034(ccf)	Demand 2035(ccf)	Demand 2036(ccf)	Demand 2037(ccf)	Demand 2038(ccf)	Demand 2039(ccf)	Demand 2040(ccf)
Residential	3,250,965	3,250,965	3,250,965	3,250,965	3,250,965	3,250,965	3,250,965	3,250,965	3,250,965	3,250,965
Multi-Res.	858,046	858,046	858,046	858,046	858,046	858,046	858,046	858,046	858,046	858,046
Commercial	1,162,646	1,162,646	1,162,646	1,162,646	1,162,646	1,162,646	1,162,646	1,162,646	1,162,646	1,162,646
Industrial	1,650	1,650	1,650	1,650	1,650	1,650	1,650	1,650	1,650	1,650
Government	646,903	646,903	646,903	646,903	646,903	646,903	646,903	646,903	646,903	646,903
Other	46,421	46,421	46,421	46,421	46,421	46,421	46,421	46,421	46,421	46,421
Unaccounted	427,993	427,993	427,993	427,993	427,993	427,993	427,993	427,993	427,993	427,993
Total	6,394,624	6,394,624	6,394,624	6,394,624	6,394,624	6,394,624	6,394,624	6,394,624	6,394,624	6,394,624

Customer Type	Demand 2031(AF)	Demand 2032(AF)	Demand 2033(AF)	Demand 2034(AF)	Demand 2035(AF)	Demand 2036(AF)	Demand 2037(AF)	Demand 2038(AF)	Demand 2039(AF)	Demand 2040(AF)
Residential	7,463	7,463	7,463	7,463	7,463	7,463	7,463	7,463	7,463	7,463
Multi-Res.	1,970	1,970	1,970	1,970	1,970	1,970	1,970	1,970	1,970	1,970
Commercial	2,669	2,669	2,669	2,669	2,669	2,669	2,669	2,669	2,669	2,669
Industrial	4	4	4	4	4	4	4	4	4	4
Government	1,485	1,485	1,485	1,485	1,485	1,485	1,485	1,485	1,485	1,485
Other	107	107	107	107	107	107	107	107	107	107
Unaccounted	983	983	983	983	983	983	983	983	983	983
Total	14,680	14,680	14,680	14,680	14,680	14,680	14,680	14,680	14,680	14,680

*Note: Zero growth assumed after 2025 buildout

California Water Service Company - Livermore District
Water Supply and Demand Analysis and Projections

Scenario #3: Based on Maintaining Growth at the 10-Year Master Plan 5-Year Growth Rate and Low Average High Demand per Service for each Customer Class.

Summary of Historical Growth Rate from Worksheet 2			
Customer Type	5 Yr. Avg. Historical Growth Rate	Individual Growth Rate Selected	Notes
Single Family Residential	0.280%	0.142%	Rate adjusted to reflect service count in Master Plan
Multi Family Residential	0.266%	7.840%	Rate adjusted to reflect service count in Master Plan
Commercial	3.048%	3.990%	Rate adjusted to reflect service count in Master Plan
Industrial	-20.000%	7.000%	Rate adjusted to reflect service count in Master Plan
Government	6.076%	0.220%	Rate adjusted at same rate as Master Plan but total is greater because of reclassification
Other	-11.646%	5.550%	Rate adjusted to reflect service count in Master Plan
Overall	0.470%	0.408%	0.000% Growth rate assumed after 2025 buildout

Summary of Maximum Demand per Service from Worksheets 5 and 6									
Demand/Serv. Units	Multi-Residential			Commercial	Industrial	Government	Total Other	Unaccounted Total Serv.	Combined Demand/Serv.
	Residential	(service)	(unit)						
Gal/Service/Yr	172,516	2,606,871	87,206	459,296	834,577	2,589,603	1,433,752	21,636	235,351
AF/Service/Yr	0.529	8.000	0.268	1.410	2.561	7.947	4.400	0.066	0.722
Gal/Service/Day	473	7,142	239	1,258	2,287	7,095	3,928	59	645

California Water Service Company - Livermore District

Water Supply and Demand Analysis and Projections

30-year projection Summary

Scenario #3: Based on Maintaining Growth at the 10-Year Master Plan 5-Year Growth Rate and Low Average High Demand per Service for each Customer Class.

Customer Type	Projected Services 2010	Projected Services 2015	Projected Services 2020	Projected Services 2025	Projected Services 2030	Projected Services 2035	Projected Services 2040	Services projected to be added from 2010 - 2040
Single Family Residential	16,466	16,583	16,701	16,820	16,820	16,820	16,820	353
Multi Family Residential	82	120	174	254	254	254	254	172
Commercial	1,065	1,295	1,575	1,915	1,915	1,915	1,915	850
Industrial	1	1	2	3	3	3	3	2
Government	235	237	240	242	242	242	242	8
Other	19	25	33	43	43	43	43	24
Total	17,868	18,261	18,724	19,277	19,277	19,277	19,277	1,409

Customer Type	Projected Demand 2010 (ccf)	Projected Demand 2015 (ccf)	Projected Demand 2020 (ccf)	Projected Demand 2025 (ccf)	Projected Demand 2030 (ccf)	Projected Demand 2035 (ccf)	Projected Demand 2040 (ccf)	Projected demand to be added from 2010 - 2040 (ccf)
Single Family Residential	3,797,442	3,824,404	3,851,558	3,878,904	3,878,904	3,878,904	3,878,904	81,462
Multi Family Residential	285,614	416,561	607,545	886,090	886,090	886,090	886,090	600,476
Commercial	653,809	795,076	966,867	1,175,776	1,175,776	1,175,776	1,175,776	521,967
Industrial	1,116	1,565	2,195	3,078	3,078	3,078	3,078	1,962
Government	811,839	820,808	829,877	839,046	839,046	839,046	839,046	27,207
Other	36,414	47,705	62,496	81,874	81,874	81,874	81,874	45,460
Unaccounted	516,782	528,162	541,560	557,535	557,535	557,535	557,535	40,752
Total	6,103,016	6,434,282	6,862,098	7,422,303	7,422,303	7,422,303	7,422,303	1,319,286

Customer Type	Projected Demand 2010 (AF)	Projected Demand 2015 (AF)	Projected Demand 2020 (AF)	Projected Demand 2025 (AF)	Projected Demand 2030 (AF)	Projected Demand 2035 (AF)	Projected Demand 2040 (AF)	Projected demand to be added from 2010 - 2040 (AF)
Single Family Residential	8,718	8,780	8,842	8,905	8,905	8,905	8,905	187
Multi Family Residential	656	956	1,395	2,034	2,034	2,034	2,034	1,379
Commercial	1,501	1,825	2,220	2,699	2,699	2,699	2,699	1,198
Industrial	3	4	5	7	7	7	7	5
Government	1,864	1,884	1,905	1,926	1,926	1,926	1,926	62
Other	84	110	143	188	188	188	188	104
Unaccounted	1,186	1,213	1,243	1,280	1,280	1,280	1,280	94
Total	14,011	14,771	15,753	17,039	17,039	17,039	17,039	3,029
	12,824	13,559	14,510	15,759	15,759	15,759	15,759	

California Water Service Company - Livermore District
Water Supply and Demand Analysis and Projections

Scenario #3: Based on Maintaining Growth at the

10-Year

Master Plan

5-Year

Growth Rate and

Low

Average

High

2000's Projections

Demand per Service for each Customer Class.

Customer Type	Actual Services 2001	Actual Services 2002	Actual Services 2003	Actual Services 2004	Actual Services 2005	Actual Services 2006	Actual Services 2007	Actual Services 2008	Actual Services 2009	Projected Services 2010
Residential	15,461	15,718	15,755	16,216	16,457	16,559	16,596	16,496	16,443	16,466
Multi-Res.	75	75	75	75	75	75	75	76	76	82
Commercial	840	859	873	882	903	914	937	998	1,024	1,065
Industrial	2	1	1	1	1	1	1	1	0	1
Government	178	177	176	176	174	180	180	209	234	235
Other	30	36	37	34	31	26	26	23	18	19
Total	16,586	16,866	16,917	17,384	17,641	17,755	17,815	17,803	17,795	17,868

Multi-res, Industrial, Gov't, and Other normalized

Customer Type	Demand 2001(ccf)	Demand 2002(ccf)	Demand 2003(ccf)	Demand 2004(ccf)	Demand 2005(ccf)	Demand 2006(ccf)	Demand 2007(ccf)	Demand 2008(ccf)	Demand 2009(ccf)	Demand 2010(ccf)
Residential	3,565,604	3,624,873	3,633,406	3,739,799	3,795,205	3,818,824	3,827,357	3,804,295	3,792,072	3,797,442
Multi-Res.	261,365	261,365	261,365	261,365	261,365	261,365	261,365	264,850	264,850	285,614
Commercial	515,749	527,415	536,011	541,537	554,431	561,184	575,306	612,759	628,723	653,809
Industrial	2,231	1,116	1,116	1,116	1,116	1,116	1,116	1,116	0	1,116
Government	616,197	612,735	609,273	609,273	602,350	623,121	623,121	723,512	810,057	811,839
Other	57,499	68,999	70,916	65,166	59,416	49,833	49,833	44,083	34,500	36,414
Unaccounted	479,714	487,813	489,288	502,805	510,216	513,525	515,261	514,914	514,682	516,782
Total	5,498,361	5,584,316	5,601,375	5,721,060	5,784,098	5,828,968	5,853,358	5,965,529	6,044,884	6,103,016

Customer Type	Demand 2001(AF)	Demand 2002(AF)	Demand 2003(AF)	Demand 2004(AF)	Demand 2005(AF)	Demand 2006(AF)	Demand 2007(AF)	Demand 2008(AF)	Demand 2009(AF)	Demand 2010(AF)
Residential	8,186	8,322	8,341	8,585	8,713	8,767	8,786	8,734	8,705	8,718
Multi-Res.	600	600	600	600	600	600	600	608	608	656
Commercial	1,184	1,211	1,231	1,243	1,273	1,288	1,321	1,407	1,443	1,501
Industrial	5	3	3	3	3	3	3	3	0	3
Government	1,415	1,407	1,399	1,399	1,383	1,430	1,430	1,661	1,860	1,864
Other	132	158	163	150	136	114	114	101	79	84
Unaccounted	1,101	1,120	1,123	1,154	1,171	1,179	1,183	1,182	1,182	1,186
Total	12,623	12,820	12,859	13,134	13,279	13,382	13,438	13,695	13,877	14,011

California Water Service Company - Livermore District
Water Supply and Demand Analysis and Projections

Scenario #3: Based on Maintaining Growth at the

- 10-Year
- Master Plan
- 5-Year

Growth Rate and

- Low
- Average
- High

2010's Projections

Demand per Service for each Customer Class.

Customer Type	Projected Services 2011	Projected Services 2012	Projected Services 2013	Projected Services 2014	Projected Services 2015	Projected Services 2016	Projected Services 2017	Projected Services 2018	Projected Services 2019	Projected Services 2020
Residential	16,490	16,513	16,536	16,560	16,583	16,607	16,630	16,654	16,677	16,701
Multi-Res.	88	95	103	111	120	129	139	150	162	174
Commercial	1,107	1,152	1,197	1,245	1,295	1,347	1,400	1,456	1,514	1,575
Industrial	1	1	1	1	1	2	2	2	2	2
Government	235	236	236	237	237	238	238	239	239	240
Other	20	21	22	24	25	26	28	29	31	33
Total	17,941	18,018	18,096	18,177	18,261	18,348	18,437	18,530	18,625	18,724

Customer Type	Demand 2011(ccf)	Demand 2012(ccf)	Demand 2013(ccf)	Demand 2014(ccf)	Demand 2015(ccf)	Demand 2016(ccf)	Demand 2017(ccf)	Demand 2018(ccf)	Demand 2019(ccf)	Demand 2020(ccf)
Residential	3,802,819	3,808,204	3,813,596	3,818,996	3,824,404	3,829,819	3,835,243	3,840,673	3,846,112	3,851,558
Multi-Res.	308,006	332,154	358,195	386,277	416,561	449,220	484,439	522,419	563,376	607,545
Commercial	679,896	707,024	735,234	764,570	795,076	826,800	859,789	894,095	929,769	966,867
Industrial	1,194	1,277	1,367	1,462	1,565	1,674	1,792	1,917	2,051	2,195
Government	813,625	815,415	817,209	819,007	820,808	822,614	824,424	826,238	828,055	829,877
Other	38,435	40,568	42,820	45,196	47,705	50,352	53,147	56,097	59,210	62,496
Unaccounted	518,919	521,122	523,394	525,740	528,162	530,665	533,251	535,927	538,695	541,560
Total	6,162,894	6,225,764	6,291,815	6,361,249	6,434,282	6,511,145	6,592,084	6,677,364	6,767,268	6,862,098

Customer Type	Demand 2011(AF)	Demand 2012(AF)	Demand 2013(AF)	Demand 2014(AF)	Demand 2015(AF)	Demand 2016(AF)	Demand 2017(AF)	Demand 2018(AF)	Demand 2019(AF)	Demand 2020(AF)
Residential	8,730	8,742	8,755	8,767	8,780	8,792	8,805	8,817	8,830	8,842
Multi-Res.	707	763	822	887	956	1,031	1,112	1,199	1,293	1,395
Commercial	1,561	1,623	1,688	1,755	1,825	1,898	1,974	2,053	2,134	2,220
Industrial	3	3	3	3	4	4	4	4	5	5
Government	1,868	1,872	1,876	1,880	1,884	1,888	1,893	1,897	1,901	1,905
Other	88	93	98	104	110	116	122	129	136	143
Unaccounted	1,191	1,196	1,202	1,207	1,213	1,218	1,224	1,230	1,237	1,243
Total	14,148	14,292	14,444	14,604	14,771	14,948	15,133	15,329	15,536	15,753

California Water Service Company - Livermore District
Water Supply and Demand Analysis and Projections

Scenario #3: Based on Maintaining Growth at the 10-Year Master Plan 5-Year Growth Rate and Low Average High Demand per Service for each Customer Class.

Customer Type	Projected Services 2021	Projected Services 2022	Projected Services 2023	Projected Services 2024	Projected Services 2025	Projected Services 2026	Projected Services 2027	Projected Services 2028	Projected Services 2029	Projected Services 2030
Residential	16,725	16,748	16,772	16,796	16,820	16,820	16,820	16,820	16,820	16,820
Multi-Res.	188	203	219	236	254	254	254	254	254	254
Commercial	1,638	1,703	1,771	1,842	1,915	1,915	1,915	1,915	1,915	1,915
Industrial	2	2	2	3	3	3	3	3	3	3
Government	240	241	241	242	242	242	242	242	242	242
Other	34	36	38	40	43	43	43	43	43	43
Total	18,827	18,933	19,044	19,158	19,277	19,277	19,277	19,277	19,277	19,277

2021-2030 residential growth tapered to account for build-out conditions.

Customer Type	Demand 2021(ccf)	Demand 2022(ccf)	Demand 2023(ccf)	Demand 2024(ccf)	Demand 2025(ccf)	Demand 2026(ccf)	Demand 2027(ccf)	Demand 2028(ccf)	Demand 2029(ccf)	Demand 2030(ccf)
Residential	3,857,012	3,862,473	3,867,942	3,873,419	3,878,904	3,878,904	3,878,904	3,878,904	3,878,904	3,878,904
Multi-Res.	655,176	706,542	761,935	821,671	886,090	886,090	886,090	886,090	886,090	886,090
Commercial	1,005,445	1,045,562	1,087,280	1,130,663	1,175,776	1,175,776	1,175,776	1,175,776	1,175,776	1,175,776
Industrial	2,348	2,513	2,689	2,877	3,078	3,078	3,078	3,078	3,078	3,078
Government	831,703	833,533	835,366	837,204	839,046	839,046	839,046	839,046	839,046	839,046
Other	65,965	69,626	73,490	77,569	81,874	81,874	81,874	81,874	81,874	81,874
Unaccounted	544,529	547,605	550,794	554,102	557,535	557,535	557,535	557,535	557,535	557,535
Total	6,962,177	7,067,853	7,179,496	7,297,504	7,422,303	7,422,303	7,422,303	7,422,303	7,422,303	7,422,303

Customer Type	Demand 2021(AF)	Demand 2022(AF)	Demand 2023(AF)	Demand 2024(AF)	Demand 2025(AF)	Demand 2026(AF)	Demand 2027(AF)	Demand 2028(AF)	Demand 2029(AF)	Demand 2030(AF)
Residential	8,855	8,867	8,880	8,892	8,905	8,905	8,905	8,905	8,905	8,905
Multi-Res.	1,504	1,622	1,749	1,886	2,034	2,034	2,034	2,034	2,034	2,034
Commercial	2,308	2,400	2,496	2,596	2,699	2,699	2,699	2,699	2,699	2,699
Industrial	5	6	6	7	7	7	7	7	7	7
Government	1,909	1,914	1,918	1,922	1,926	1,926	1,926	1,926	1,926	1,926
Other	151	160	169	178	188	188	188	188	188	188
Unaccounted	1,250	1,257	1,264	1,272	1,280	1,280	1,280	1,280	1,280	1,280
Total	15,983	16,226	16,482	16,753	17,039	17,039	17,039	17,039	17,039	17,039

*Note: Zero growth assumed after 2025 buildout

California Water Service Company - Livermore District Water Supply and Demand Analysis and Projections

Scenario #3: Based on Maintaining Growth at the 10-Year Master Plan 5-Year Growth Rate and Low Average High Demand per Service for each Customer Class.

Customer Type	Projected Services 2031	Projected Services 2032	Projected Services 2033	Projected Services 2034	Projected Services 2035	Projected Services 2036	Projected Services 2037	Projected Services 2038	Projected Services 2039	Projected Services 2040
Residential	16,820	16,820	16,820	16,820	16,820	16,820	16,820	16,820	16,820	16,820
Multi-Res.	254	254	254	254	254	254	254	254	254	254
Commercial	1,915	1,915	1,915	1,915	1,915	1,915	1,915	1,915	1,915	1,915
Industrial	3	3	3	3	3	3	3	3	3	3
Government	242	242	242	242	242	242	242	242	242	242
Other	43	43	43	43	43	43	43	43	43	43
Total	19,277	19,277	19,277	19,277	19,277	19,277	19,277	19,277	19,277	19,277

2021-2030 residential growth tapered to account for build-out conditions.

Customer Type	Demand 2031(ccf)	Demand 2032(ccf)	Demand 2033(ccf)	Demand 2034(ccf)	Demand 2035(ccf)	Demand 2036(ccf)	Demand 2037(ccf)	Demand 2038(ccf)	Demand 2039(ccf)	Demand 2040(ccf)
Residential	3,878,904	3,878,904	3,878,904	3,878,904	3,878,904	3,878,904	3,878,904	3,878,904	3,878,904	3,878,904
Multi-Res.	886,090	886,090	886,090	886,090	886,090	886,090	886,090	886,090	886,090	886,090
Commercial	1,175,776	1,175,776	1,175,776	1,175,776	1,175,776	1,175,776	1,175,776	1,175,776	1,175,776	1,175,776
Industrial	3,078	3,078	3,078	3,078	3,078	3,078	3,078	3,078	3,078	3,078
Government	839,046	839,046	839,046	839,046	839,046	839,046	839,046	839,046	839,046	839,046
Other	81,874	81,874	81,874	81,874	81,874	81,874	81,874	81,874	81,874	81,874
Unaccounted	557,535	557,535	557,535	557,535	557,535	557,535	557,535	557,535	557,535	557,535
Total	7,422,303	7,422,303	7,422,303	7,422,303	7,422,303	7,422,303	7,422,303	7,422,303	7,422,303	7,422,303

Customer Type	Demand 2031(AF)	Demand 2032(AF)	Demand 2033(AF)	Demand 2034(AF)	Demand 2035(AF)	Demand 2036(AF)	Demand 2037(AF)	Demand 2038(AF)	Demand 2039(AF)	Demand 2040(AF)
Residential	8,905	8,905	8,905	8,905	8,905	8,905	8,905	8,905	8,905	8,905
Multi-Res.	2,034	2,034	2,034	2,034	2,034	2,034	2,034	2,034	2,034	2,034
Commercial	2,699	2,699	2,699	2,699	2,699	2,699	2,699	2,699	2,699	2,699
Industrial	7	7	7	7	7	7	7	7	7	7
Government	1,926	1,926	1,926	1,926	1,926	1,926	1,926	1,926	1,926	1,926
Other	188	188	188	188	188	188	188	188	188	188
Unaccounted	1,280	1,280	1,280	1,280	1,280	1,280	1,280	1,280	1,280	1,280
Total	17,039	17,039	17,039	17,039	17,039	17,039	17,039	17,039	17,039	17,039

*Note: Zero growth assumed after 2025 buildout

California Water Service Company - Livermore District

Water Supply and Demand Analysis and Projections

Scenario #4: Based on Maintaining Growth at the 10-Year Average Annual Growth
 5-Year

Summary of Historical Growth Rate from Worksheet 2			
Customer Type	10 Yr. Avg. Historical Growth Rate	Individual Growth Rate Selected	Notes
Single Family Residential	0.794%	0.794%	Historical growth rate used
Multi Family Residential	0.133%	0.133%	Historical growth rate used
Commercial	3.156%	3.156%	Historical growth rate used
Industrial	-18.333%	0.950%	Overall growth rate used
Government	5.325%	0.950%	Overall growth rate used
Other	-1.730%	0.950%	Overall growth rate used
Overall	0.950%	0.929%	

California Water Service Company - Livermore District
Water Supply and Demand Analysis and Projections

30-year projection Summary

Scenario #4: Based on Maintaining Growth at the 10-Year Average Annual Growth
 5-Year

Customer Type	Projected Services 2010	Projected Services 2015	Projected Services 2020	Projected Services 2025	Projected Services 2030	Projected Services 2035	Projected Services 2040	Services projected to be added from 2010 - 2040
Single Family Residential	16,574	17,242	17,938	18,393	18,518	18,552	18,561	1,987
Multi Family Residential	76	77	77	78	78	79	79	3
Commercial	1,056	1,234	1,441	1,683	1,966	2,297	2,683	1,627
Industrial	0	0	0	0	0	0	0	0
Government	236	248	260	272	285	299	314	77
Other	18	19	20	21	22	23	24	6
Total	17,960	18,819	19,736	20,447	20,870	21,249	21,661	3,700

California Water Service Company - Livermore District

Water Supply and Demand Analysis and Projections

Worksheet 13

2000's Projections

Scenario #4: Based on Maintaining Growth at the 10-Year Average Annual Growth
 5-Year

Customer Type	Actual Services 2001	Actual Services 2002	Actual Services 2003	Actual Services 2004	Actual Services 2005	Actual Services 2006	Actual Services 2007	Actual Services 2008	Actual Services 2009	Projected Services 2010
Residential	15,461	15,718	15,755	16,216	16,457	16,559	16,596	16,496	16,443	16,574
Multi-Res.	75	75	75	75	75	75	75	76	76	76
Commercial	840	859	873	882	903	914	937	998	1,024	1,056
Industrial	2	1	1	1	1	1	1	1	0	0
Government	178	177	176	176	174	180	180	209	234	236
Other	30	36	37	34	31	26	26	23	18	18
Total	16,586	16,866	16,917	17,384	17,641	17,755	17,815	17,803	17,795	17,960

2010's Projections

Customer Type	Projected Services 2011	Projected Services 2012	Projected Services 2013	Projected Services 2014	Projected Services 2015	Projected Services 2016	Projected Services 2017	Projected Services 2018	Projected Services 2019	Projected Services 2020
Residential	16,705	16,838	16,971	17,106	17,242	17,379	17,517	17,656	17,796	17,938
Multi-Res.	76	76	76	77	77	77	77	77	77	77
Commercial	1,090	1,124	1,160	1,196	1,234	1,273	1,313	1,354	1,397	1,441
Industrial	0	0	0	0	0	0	0	0	0	0
Government	238	241	243	245	248	250	252	255	257	260
Other	18	19	19	19	19	19	19	20	20	20
Total	18,128	18,297	18,469	18,643	18,819	18,998	19,179	19,362	19,547	19,736

California Water Service Company - Livermore District

Water Supply and Demand Analysis and Projections

2020's Projections

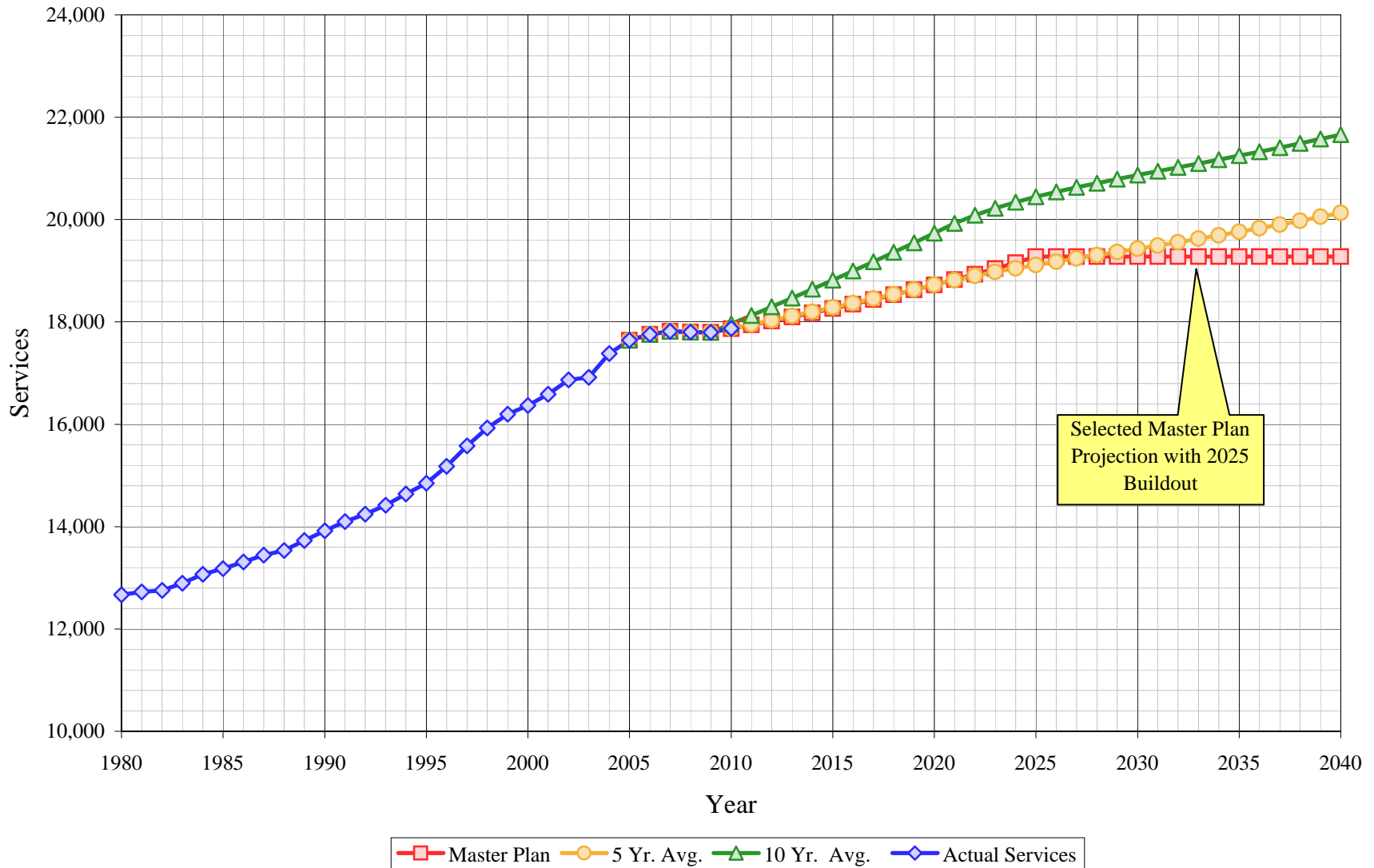
Scenario #4: Based on Maintaining Growth at the 10-Year Average Annual Growth
 5-Year

Customer Type	Projected Services 2021	Projected Services 2022	Projected Services 2023	Projected Services 2024	Projected Services 2025	Projected Services 2026	Projected Services 2027	Projected Services 2028	Projected Services 2029	Projected Services 2030
Residential	18,080	18,190	18,276	18,342	18,393	18,432	18,463	18,486	18,504	18,518
Multi-Res.	77	77	77	78	78	78	78	78	78	78
Commercial	1,487	1,534	1,582	1,632	1,683	1,737	1,791	1,848	1,906	1,966
Industrial	0	0	0	0	0	0	0	0	0	0
Government	262	265	267	270	272	275	277	280	283	285
Other	20	20	21	21	21	21	21	22	22	22
Total	19,926	20,086	20,223	20,342	20,447	20,543	20,631	20,713	20,793	20,870

2030's Projections

Customer Type	Projected Services 2031	Projected Services 2032	Projected Services 2033	Projected Services 2034	Projected Services 2035	Projected Services 2036	Projected Services 2037	Projected Services 2038	Projected Services 2039	Projected Services 2040
Residential	18,528	18,537	18,543	18,548	18,552	18,554	18,557	18,558	18,560	18,561
Multi-Res.	78	78	78	79	79	79	79	79	79	79
Commercial	2,029	2,093	2,159	2,227	2,297	2,369	2,444	2,521	2,601	2,683
Industrial	0	0	0	0	0	0	0	0	0	0
Government	288	291	294	296	299	302	305	308	311	314
Other	22	22	23	23	23	23	23	24	24	24
Total	20,945	21,021	21,096	21,172	21,249	21,328	21,408	21,490	21,574	21,661

Livermore District Historical & Projected Services

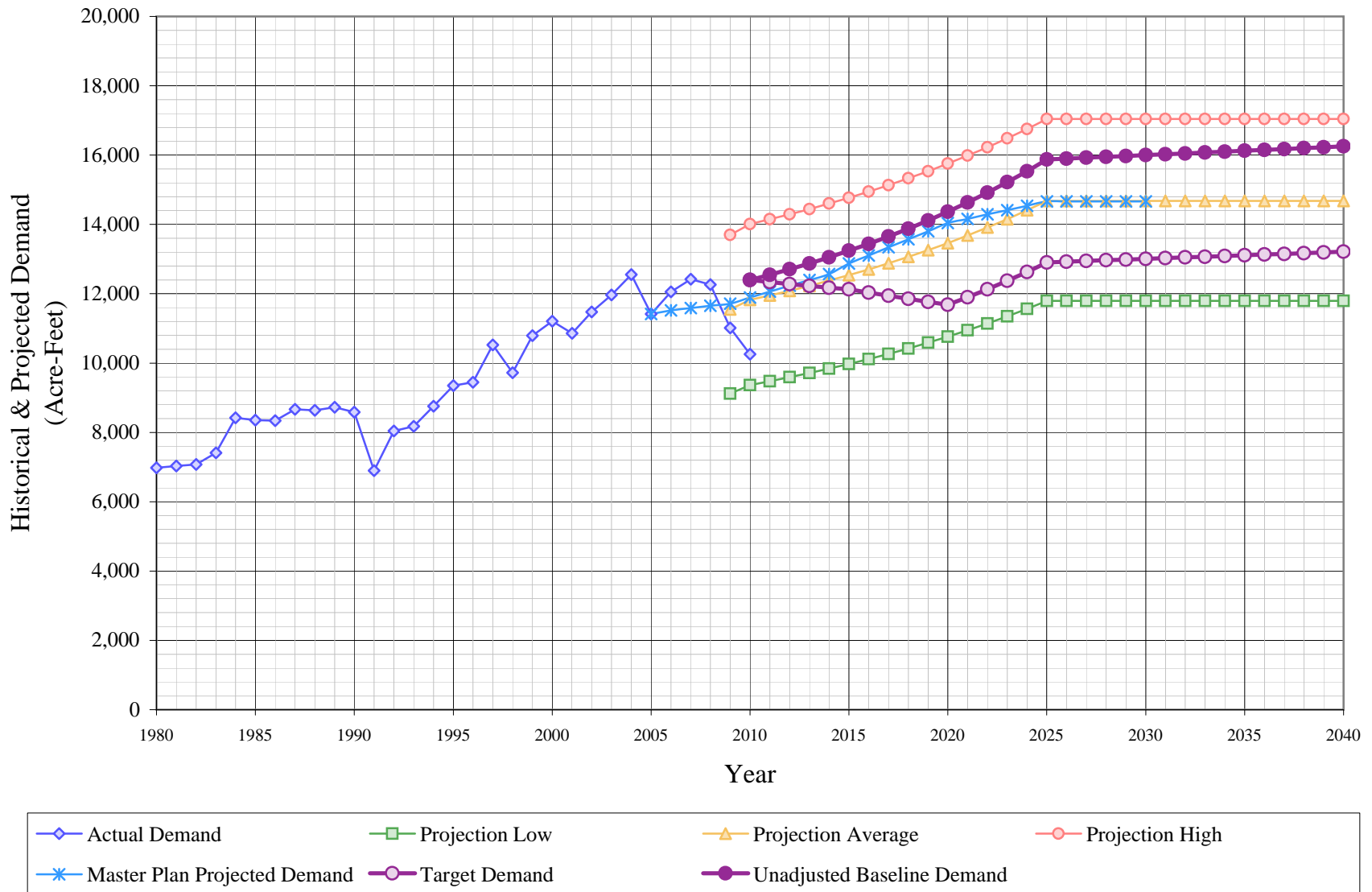


California Water Service Company - Livermore District
Water Supply and Demand Analysis and Projections
Actual & Projected Annual Average Services

Year	Actual Services	Projected Services		
		Master Plan	5 Yr. Avg.	10 Yr. Avg.
1980	12,669			
1981	12,723			
1982	12,752			
1983	12,893			
1984	13,067			
1985	13,178			
1986	13,308			
1987	13,444			
1988	13,536			
1989	13,728			
1990	13,920			
1991	14,099			
1992	14,245			
1993	14,417			
1994	14,637			
1995	14,849			
1996	15,176			
1997	15,576			
1998	15,927			
1999	16,196			
2000	16,369			
2001	16,586			
2002	16,866			
2003	16,917			
2004	17,384			
2005	17,641	17,641	17,641	17,641
2006	17,755	17,755	17,755	17,755
2007	17,815	17,815	17,815	17,815
2008	17,803	17,803	17,803	17,803
2009	17,795	17,795	17,795	17,795
2010	17,871	17,868	17,874	17,960

Year	Actual Services	Projected Services		
		Master Plan	5 Yr. Avg.	10 Yr. Avg.
2011		17,941	17,953	18,128
2012		18,018	18,034	18,297
2013		18,096	18,116	18,469
2014		18,177	18,199	18,643
2015		18,261	18,284	18,819
2016		18,348	18,369	18,998
2017		18,437	18,456	19,179
2018		18,530	18,544	19,362
2019		18,625	18,634	19,547
2020		18,724	18,725	19,736
2021		18,827	18,817	19,926
2022		18,933	18,900	20,086
2023		19,044	18,976	20,223
2024		19,158	19,047	20,342
2025		19,277	19,114	20,447
2026		19,277	19,179	20,543
2027		19,277	19,242	20,631
2028		19,277	19,305	20,713
2029		19,277	19,367	20,793
2030		19,277	19,430	20,870
2031		19,277	19,494	20,945
2032		19,277	19,559	21,021
2033		19,277	19,625	21,096
2034		19,277	19,692	21,172
2035		19,277	19,761	21,249
2036		19,277	19,831	21,328
2037		19,277	19,904	21,408
2038		19,277	19,978	21,490
2039		19,277	20,055	21,574
2040		19,277	20,134	21,661

Livermore District Historical & Projected Demand



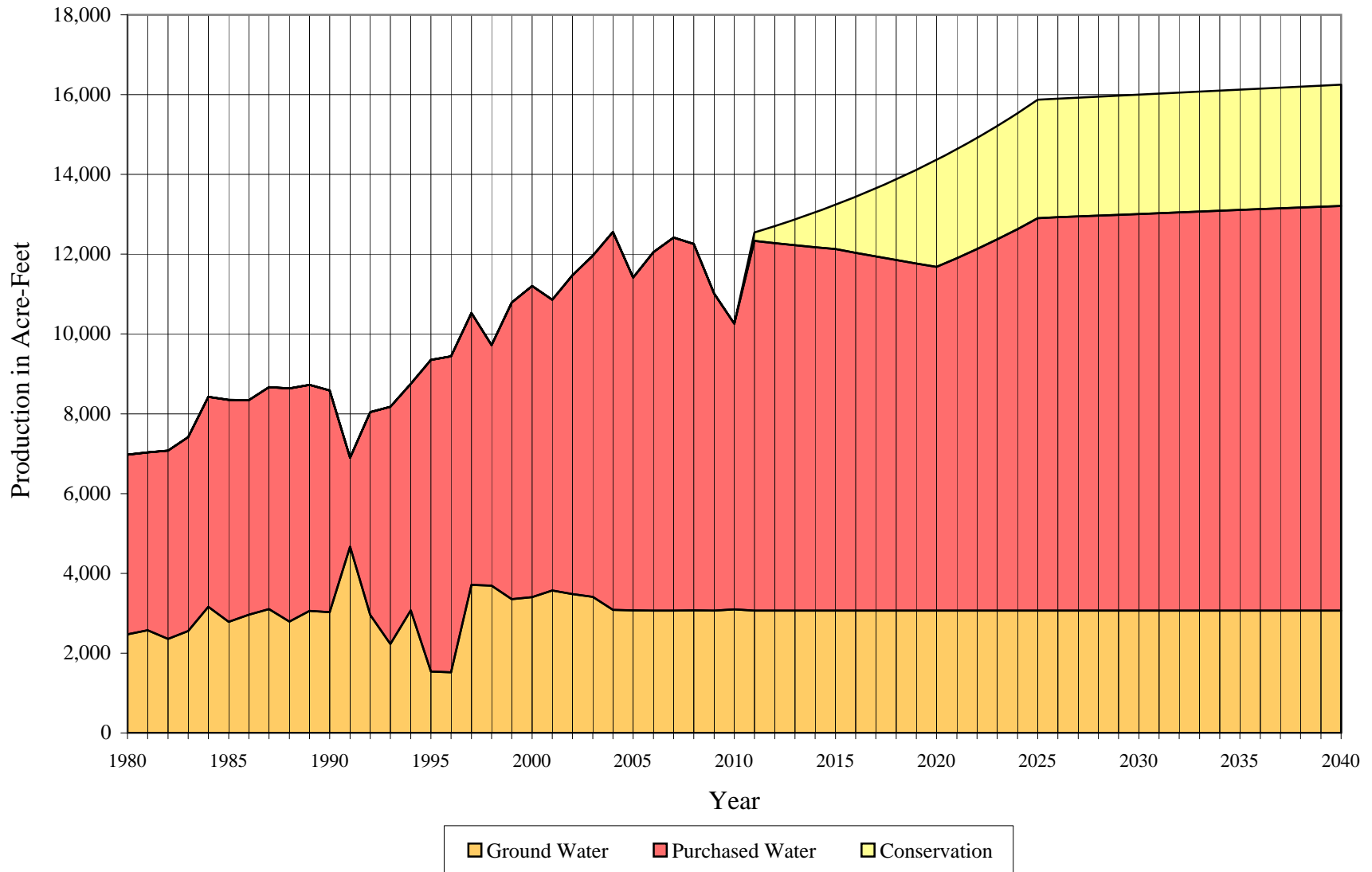
California Water Service Company - Livermore District
Water Supply and Demand Analysis and Projections
Actual & Projected Demand in Acre-Feet

Year	Actual Demand	Projection			Unadjusted Baseline Demand	Target Demand
		Low	Average	High		
1980	6,977					
1981	7,034					
1982	7,078					
1983	7,414					
1984	8,422					
1985	8,350					
1986	8,340					
1987	8,667					
1988	8,633					
1989	8,725					
1990	8,587					
1991	6,899					
1992	8,042					
1993	8,175					
1994	8,753					
1995	9,351					
1996	9,444					
1997	10,525					
1998	9,721					
1999	10,791					
2000	11,207					
2001	10,861					
2002	11,474					
2003	11,967					
2004	12,556					
2005	11,416					
2006	12,055					
2007	12,417					
2008	12,260					
2009	11,014	9,122	11,546	13,695		
2010	10,260	9,367	11,822	14,011	12,399	12,398

Year	Actual Demand	Projection			Unadjusted Baseline Demand	Target Demand
		Low	Average	High		
2011		9,477	11,951	14,148	12,548	12,337
2012		9,592	12,087	14,292	12,707	12,279
2013		9,713	12,229	14,444	12,875	12,225
2014		9,841	12,379	14,604	13,053	12,175
2015		9,975	12,537	14,771	13,241	12,128
2016		10,116	12,703	14,948	13,441	12,034
2017		10,265	12,878	15,133	13,653	11,943
2018		10,422	13,063	15,329	13,877	11,853
2019		10,587	13,258	15,536	14,115	11,766
2020		10,762	13,463	15,753	14,367	11,681
2021		10,946	13,680	15,983	14,634	11,898
2022		11,140	13,910	16,226	14,917	12,128
2023		11,346	14,152	16,482	15,218	12,372
2024		11,563	14,409	16,753	15,536	12,631
2025		11,792	14,680	17,039	15,873	12,905
2026		11,792	14,680	17,039	15,898	12,926
2027		11,792	14,680	17,039	15,924	12,946
2028		11,792	14,680	17,039	15,949	12,967
2029		11,792	14,680	17,039	15,974	12,987
2030		11,792	14,680	17,039	15,999	13,008
2031		11,792	14,680	17,039	16,024	13,028
2032		11,792	14,680	17,039	16,050	13,049
2033		11,792	14,680	17,039	16,075	13,069
2034		11,792	14,680	17,039	16,100	13,090
2035		11,792	14,680	17,039	16,125	13,110
2036		11,792	14,680	17,039	16,150	13,131
2037		11,792	14,680	17,039	16,176	13,151
2038		11,792	14,680	17,039	16,201	13,172
2039		11,792	14,680	17,039	16,226	13,192
2040		11,792	14,680	17,039	16,251	13,212

Livermore District

Historical and Projected Distribution of Demand by Source



California Water Service Company - Livermore District
Water Supply and Demand Analysis and Projections
Historical and Projected Distribution of Demand by Source

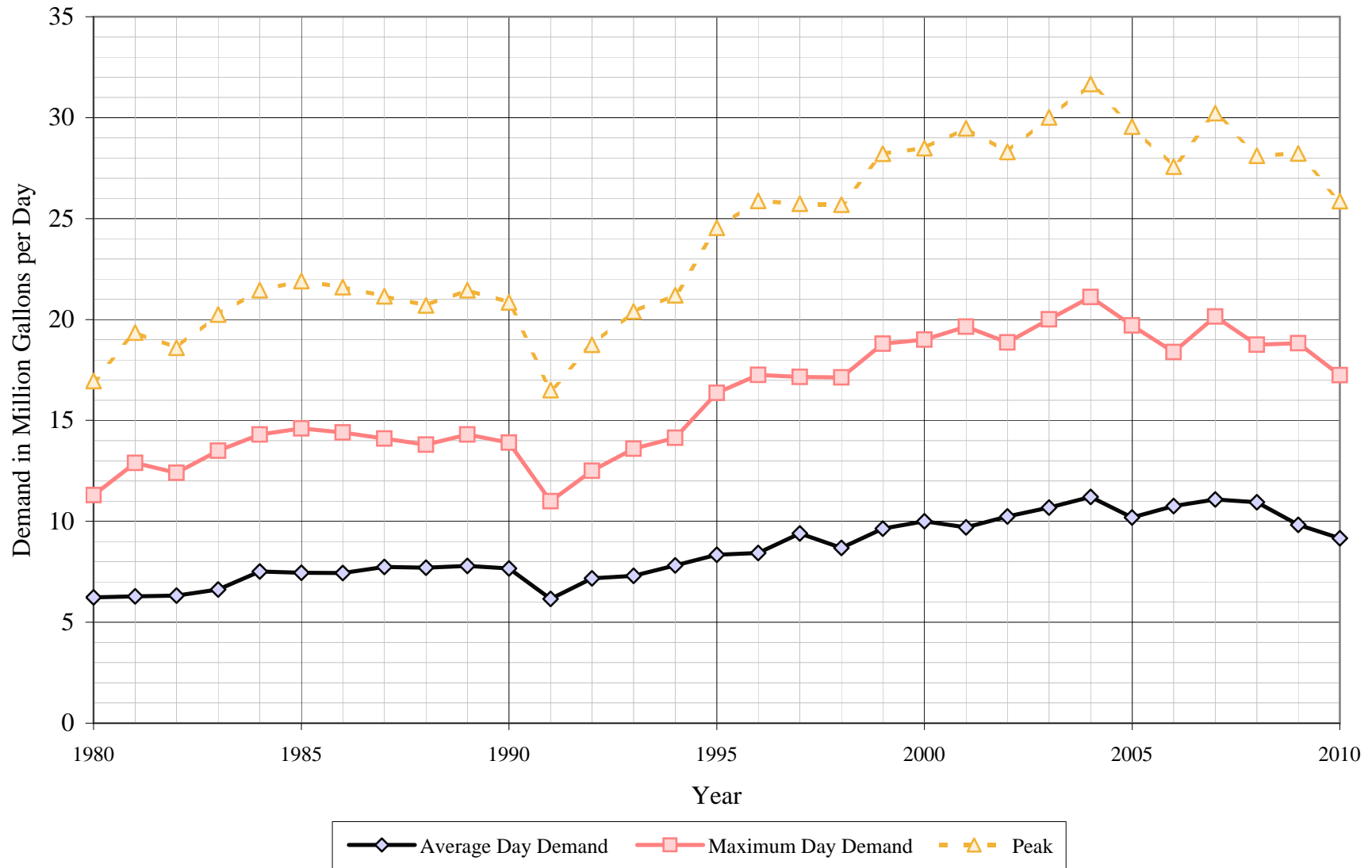
Worksheet 17

Year	Purchased Water		Ground Water		Conservation		Total	
	kGal	AFY	kGal	AFY	kGal	AFY	kGal	AFY
1980	1,467,280	4,503	806,153	2,474			2,273,433	6,977
1981	1,453,428	4,460	838,753	2,574			2,292,181	7,034
1982	1,538,575	4,722	767,789	2,356			2,306,364	7,078
1983	1,582,229	4,856	833,451	2,558			2,415,680	7,414
1984	1,713,397	5,258	1,030,995	3,164			2,744,392	8,422
1985	1,813,403	5,565	907,520	2,785			2,720,923	8,350
1986	1,752,221	5,377	965,263	2,962			2,717,484	8,340
1987	1,812,458	5,562	1,011,654	3,105			2,824,112	8,667
1988	1,903,967	5,843	909,061	2,790			2,813,028	8,633
1989	1,846,555	5,667	996,479	3,058			2,843,034	8,725
1990	1,811,572	5,560	986,554	3,028			2,798,126	8,587
1991	726,158	2,229	1,521,988	4,671			2,248,146	6,899
1992	1,657,466	5,087	963,140	2,956			2,620,606	8,042
1993	1,936,463	5,943	727,269	2,232			2,663,732	8,175
1994	1,851,585	5,682	1,000,624	3,071			2,852,209	8,753
1995	2,544,786	7,810	502,143	1,541			3,046,929	9,351
1996	2,581,738	7,923	495,512	1,521			3,077,250	9,444
1997	2,220,805	6,815	1,208,873	3,710			3,429,678	10,525
1998	1,963,667	6,026	1,203,924	3,695			3,167,591	9,721
1999	2,422,894	7,436	1,093,502	3,356			3,516,396	10,791
2000	2,542,789	7,804	1,108,973	3,403			3,651,762	11,207
2001	2,375,642	7,291	1,163,435	3,570			3,539,077	10,861
2002	2,603,889	7,991	1,134,857	3,483			3,738,746	11,474
2003	2,788,665	8,558	1,110,646	3,408			3,899,311	11,967
2004	3,087,000	9,474	1,004,426	3,083			4,091,426	12,556
2005	2,718,658	8,343	1,001,143	3,072			3,719,801	11,416
2006	2,928,725	8,988	999,549	3,068			3,928,274	12,055
2007	3,046,629	9,350	999,375	3,067			4,046,004	12,417
2008	2,993,312	9,186	1,001,719	3,074			3,995,031	12,260
2009	2,590,180	7,949	998,683	3,065			3,588,863	11,014
2010	2,333,662	7,162	1,009,550	3,098			3,343,212	10,260

Year	Purchased Water		Ground Water		Conservation		Total	
	kGal	AFY	kGal	AFY	kGal	AFY	kGal	AFY
2011	3,019,858	9,268	1,000,038	3,069	68,972	212	4,088,868	12,548
2012	3,001,089	9,210	1,000,038	3,069	139,404	428	4,140,532	12,707
2013	2,983,489	9,156	1,000,038	3,069	211,727	650	4,195,255	12,875
2014	2,967,082	9,106	1,000,038	3,069	286,107	878	4,253,228	13,053
2015	2,951,889	9,059	1,000,038	3,069	362,726	1,113	4,314,653	13,241
2016	2,921,361	8,965	1,000,038	3,069	458,345	1,407	4,379,744	13,441
2017	2,891,557	8,874	1,000,038	3,069	557,131	1,710	4,448,726	13,653
2018	2,862,441	8,784	1,000,038	3,069	659,359	2,023	4,521,838	13,877
2019	2,833,968	8,697	1,000,038	3,069	765,325	2,349	4,599,332	14,115
2020	2,806,085	8,612	1,000,038	3,069	875,351	2,686	4,681,474	14,367
2021	2,876,877	8,829	1,000,038	3,069	891,632	2,736	4,768,547	14,634
2022	2,951,918	9,059	1,000,038	3,069	908,891	2,789	4,860,846	14,917
2023	3,031,463	9,303	1,000,038	3,069	927,185	2,845	4,958,686	15,218
2024	3,115,780	9,562	1,000,038	3,069	946,577	2,905	5,062,395	15,536
2025	3,205,153	9,836	1,000,038	3,069	967,131	2,968	5,172,323	15,873
2026	3,211,827	9,857	1,000,038	3,069	968,666	2,973	5,180,531	15,898
2027	3,218,501	9,877	1,000,038	3,069	970,201	2,977	5,188,740	15,924
2028	3,225,175	9,898	1,000,038	3,069	971,736	2,982	5,196,949	15,949
2029	3,231,849	9,918	1,000,038	3,069	973,271	2,987	5,205,158	15,974
2030	3,238,523	9,939	1,000,038	3,069	974,806	2,992	5,213,367	15,999
2031	3,245,198	9,959	1,000,038	3,069	976,341	2,996	5,221,576	16,024
2032	3,251,872	9,980	1,000,038	3,069	977,876	3,001	5,229,785	16,050
2033	3,258,546	10,000	1,000,038	3,069	979,410	3,006	5,237,994	16,075
2034	3,265,220	10,021	1,000,038	3,069	980,945	3,010	5,246,203	16,100
2035	3,271,894	10,041	1,000,038	3,069	982,480	3,015	5,254,412	16,125
2036	3,278,568	10,062	1,000,038	3,069	984,015	3,020	5,262,621	16,150
2037	3,285,242	10,082	1,000,038	3,069	985,550	3,025	5,270,830	16,176
2038	3,291,916	10,103	1,000,038	3,069	987,085	3,029	5,279,039	16,201
2039	3,298,590	10,123	1,000,038	3,069	988,620	3,034	5,287,248	16,226
2040	3,305,264	10,143	1,000,038	3,069	990,155	3,039	5,295,457	16,251

Livermore District

Average Day, Maximum Day, & Peak Demand

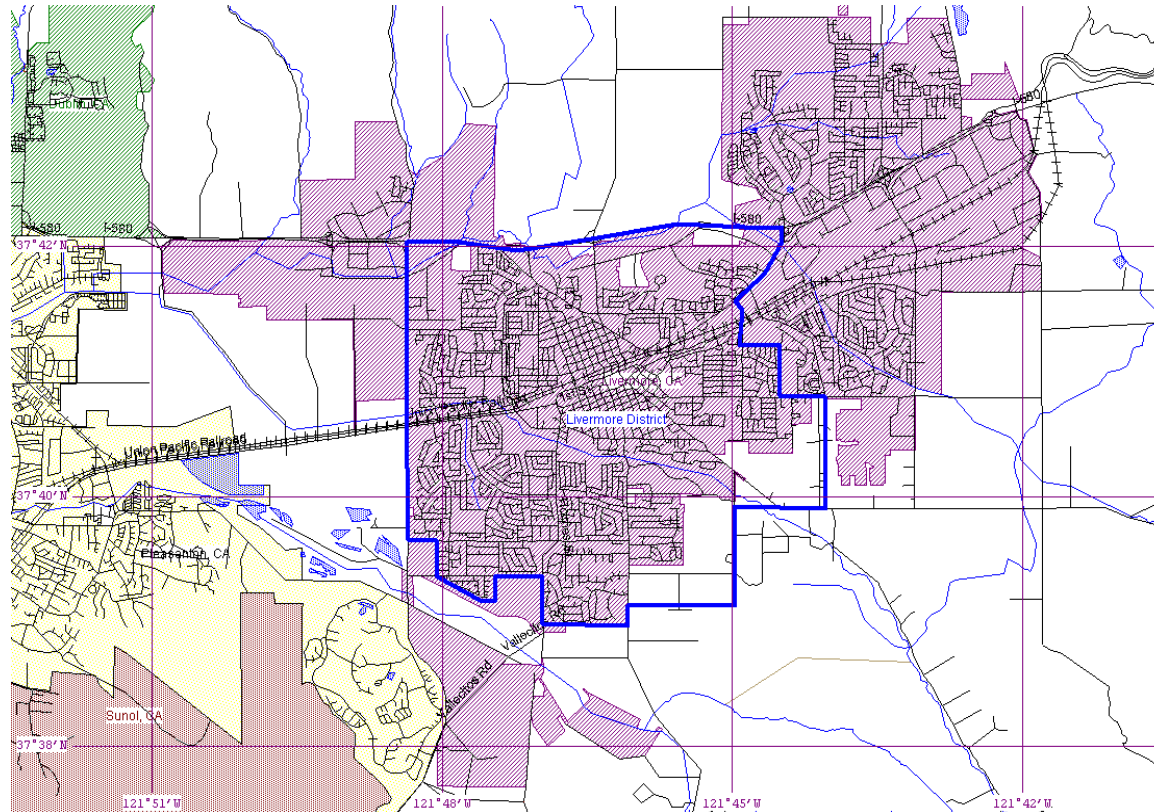


California Water Service Company - Livermore District
Water Supply and Demand Analysis and Projections
Historical and Projected Average Day, Maximum Day, and Peak Demand

Year	Historical Annual Demand		Average Day Demand		Maximum Day Demand		MDD ADD Ratio	Estimated Peak Hour Demand		PHD MDD Ratio	PHD ADD Ratio	Measured Peak Hour Demand		PHD MDD Ratio
	(AFY)	(MGY)	(MGD)	(GPD)	(MGD)	(GPD)		(MGD)	(GPM)			(MGD)	(GPM)	
1980	6,977	2,273	6.23	492	11.30	892	1.81	16.95	11,771	1.50	2.72			
1981	7,034	2,292	6.28	494	12.90	1,014	2.05	19.35	13,438	1.50	3.08			
1982	7,078	2,306	6.32	496	12.40	972	1.96	18.60	12,917	1.50	2.94			
1983	7,414	2,416	6.62	513	13.50	1,047	2.04	20.25	14,063	1.50	3.06			
1984	8,422	2,744	7.52	575	14.30	1,094	1.90	21.45	14,896	1.50	2.85			
1985	8,350	2,721	7.45	566	14.60	1,108	1.96	21.90	15,208	1.50	2.94			
1986	8,340	2,717	7.45	559	14.40	1,082	1.93	21.60	15,000	1.50	2.90			
1987	8,667	2,824	7.74	576	14.10	1,049	1.82	21.15	14,688	1.50	2.73			
1988	8,633	2,813	7.71	569	13.80	1,020	1.79	20.70	14,375	1.50	2.69			
1989	8,725	2,843	7.79	567	14.30	1,042	1.84	21.45	14,896	1.50	2.75			
1990	8,587	2,798	7.67	551	13.90	999	1.81	20.85	14,479	1.50	2.72			
1991	6,899	2,248	6.16	437	11.00	780	1.79	16.50	11,458	1.50	2.68			
1992	8,042	2,621	7.18	504	12.50	878	1.74	18.75	13,021	1.50	2.61			
1993	8,175	2,664	7.30	506	13.60	943	1.86	20.40	14,167	1.50	2.80			
1994	8,753	2,852	7.81	534	14.14	966	1.81	21.20	14,725	1.50	2.71			
1995	9,351	3,047	8.35	562	16.36	1,102	1.96	24.54	17,041	1.50	2.94			
1996	9,444	3,077	8.43	556	17.25	1,137	2.05	25.88	17,970	1.50	3.07			
1997	10,525	3,430	9.40	603	17.16	1,102	1.83	25.74	17,873	1.50	2.74			
1998	9,721	3,168	8.68	545	17.12	1,075	1.97	25.69	17,838	1.50	2.96			
1999	10,791	3,516	9.63	595	18.81	1,161	1.95	28.21	19,591	1.50	2.93			
2000	11,207	3,652	10.00	611	19.00	1,161	1.90	28.50	19,789	1.50	2.85			
2001	10,861	3,539	9.70	585	19.65	1,185	2.03	29.47	20,467	1.50	3.04			
2002	11,474	3,739	10.24	607	18.87	1,119	1.84	28.30	19,652	1.50	2.76			
2003	11,967	3,899	10.68	631	20.00	1,182	1.87	30.01	20,838	1.50	2.81			
2004	12,556	4,091	11.21	645	21.11	1,214	1.88	31.67	21,990	1.50	2.82			
2005	11,416	3,720	10.19	578	19.71	1,117	1.93	29.56	20,526	1.50	2.90			
2006	12,055	3,928	10.76	606	18.38	1,035	1.71	27.57	19,146	1.50	2.56			
2007	12,417	4,046	11.08	622	20.15	1,131	1.82	30.22	20,985	1.50	2.73			
2008	12,260	3,995	10.95	615	18.75	1,053	1.71	28.12	19,526	1.50	2.57			
2009	11,014	3,589	9.83	553	18.82	1,058	1.91	28.23	19,604	1.50	2.87			
2010	10,260	3,343	9.16	513	17.25	965	1.88	25.87	17,964	1.50	2.82			
5 year Average (2006-2010)			10.36	582	18.67	1,048	1.81	28.00	19,445	1.50	2.71			
10 year Average (2001-2010)			10.38	595	19.27	1,106	1.86	28.90	20,070	1.50	2.79			

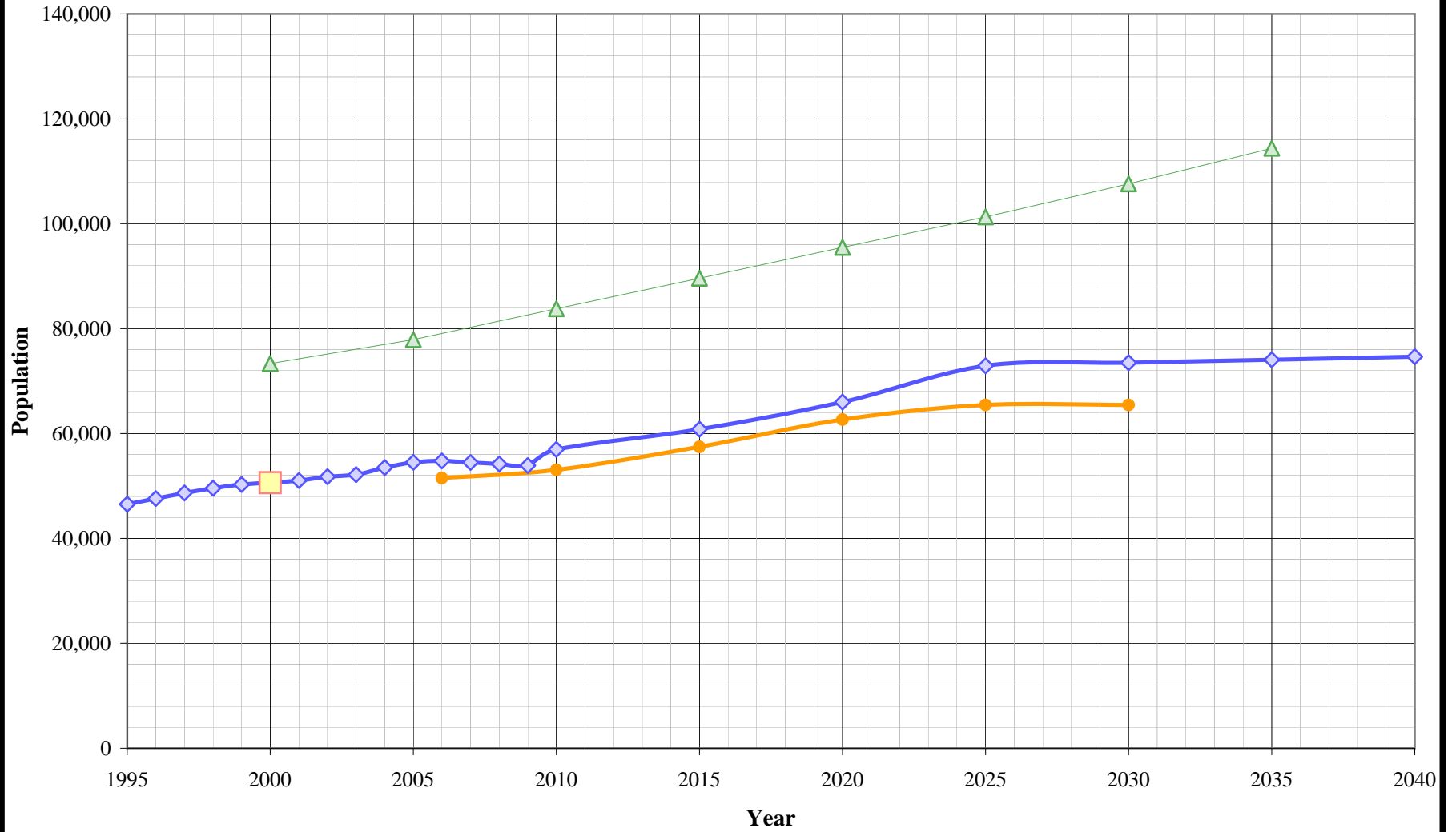
California Water Service Company - Livermore District Water Supply and Demand Analysis and Projections

US Census 2000 Tract Map Summary



	Census Tract Blocks	Population	Housing Units	Area sq. mi.
District	575	50,622	18,518	11.51
City	793	73,345	26,610	23.9

Livermore District Population Estimate and Projections



California Water Service Company - Livermore District
Water Supply and Demand Analysis and Projections

Population as of the 2000 Average Annual Services
 Estimated District Population based on 2000 U.S. Census Data & Annual Service Count

District Communities Served: Livermore

Year	Single Family Residential Services	Multi Family Residential			Flat Rate Residential Services	Total Residential Services	Estimated District Population
		Services	Residential Units (DU)	Unit Density			
1995	13,919	75	2,128	28.4	0	16,047	46,509
1996	14,236	75	2,181	29.1	0	16,417	47,582
1997	14,628	75	2,162	28.8	0	16,790	48,663
1998	14,958	75	2,143	28.6	0	17,101	49,564
1999	15,200	75	2,148	28.6	0	17,348	50,280
2000	15,300	75	2,166	28.9	0	17,466	50,622
2001	15,461	75	2,144	28.6	0	17,605	51,025
2002	15,718	75	2,143	28.6	0	17,861	51,767
2003	15,755	75	2,240	29.9	0	17,995	52,155
2004	16,216	75	2,242	29.9	0	18,458	53,498
2005	16,457	75	2,351	31.3	0	18,808	54,510
2006	16,559	75	2,334	31.1	0	18,893	54,758
2007	16,596	75	2,196	29.3	0	18,792	54,465
2008	16,496	76	2,195	28.9	0	18,691	54,172
2009	16,443	76	2,150	28.3	0	18,593	53,888
2010	16,466	82	3,185	38.9	0	19,651	56,956
2015	16,583	120	4,404	36.8	0	20,987	60,827
2020	16,701	174	6,070	34.8	0	22,771	65,998
2025	16,820	254	8,339	32.8	0	25,159	72,918
2030	16,820	254	8,539	33.6	0	25,358	73,497
2035	16,820	254	8,739	34.4	0	25,558	74,075
2040	16,820	254	8,938	35.2	0	25,758	74,654

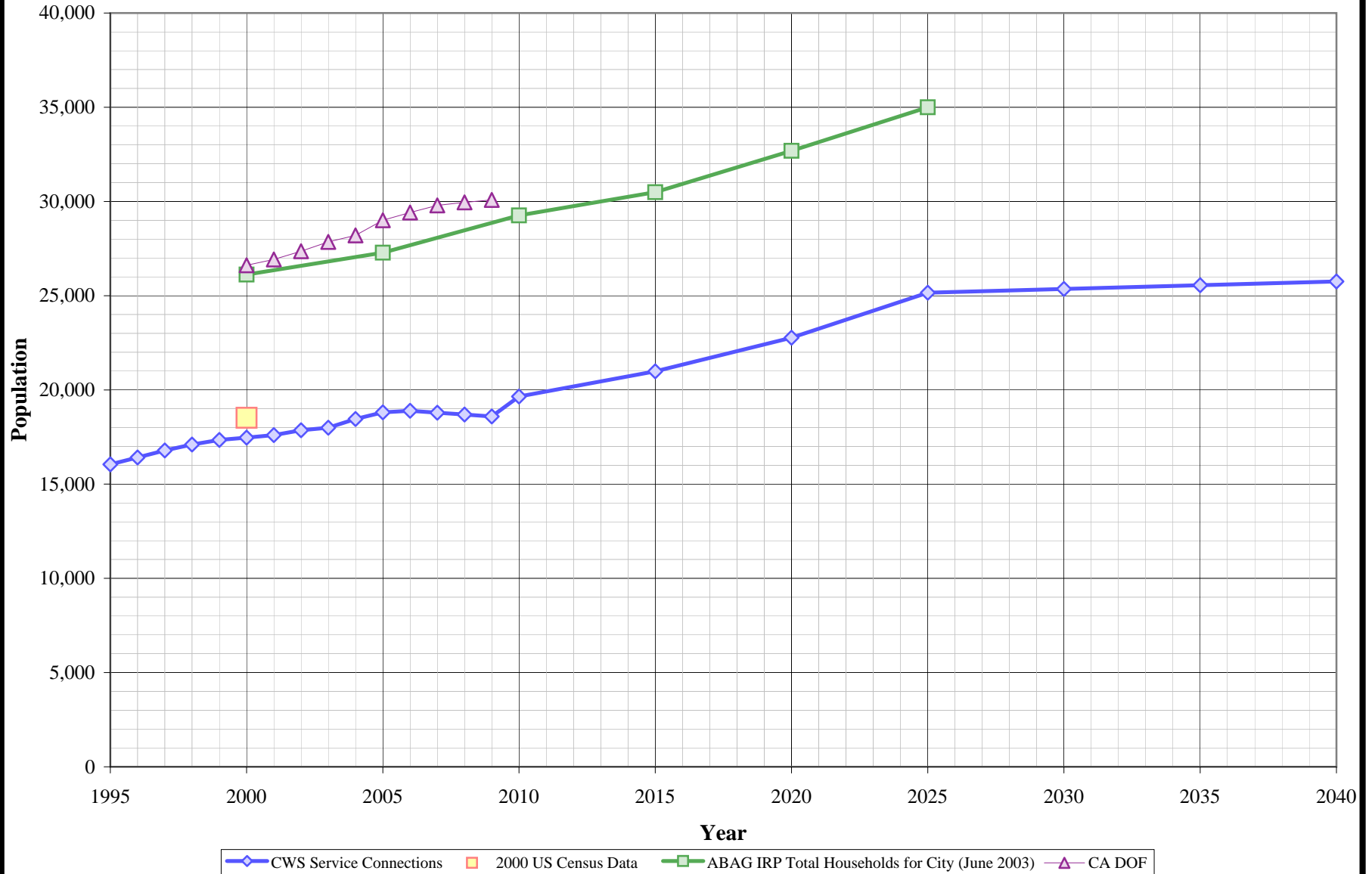
US Census 2000		Calculated Persons per CWS DU	Calculated Persons per US Census Housing Unit
Population	Housing Units		

50,622	18,518	2.898	2.734
--------	--------	-------	-------

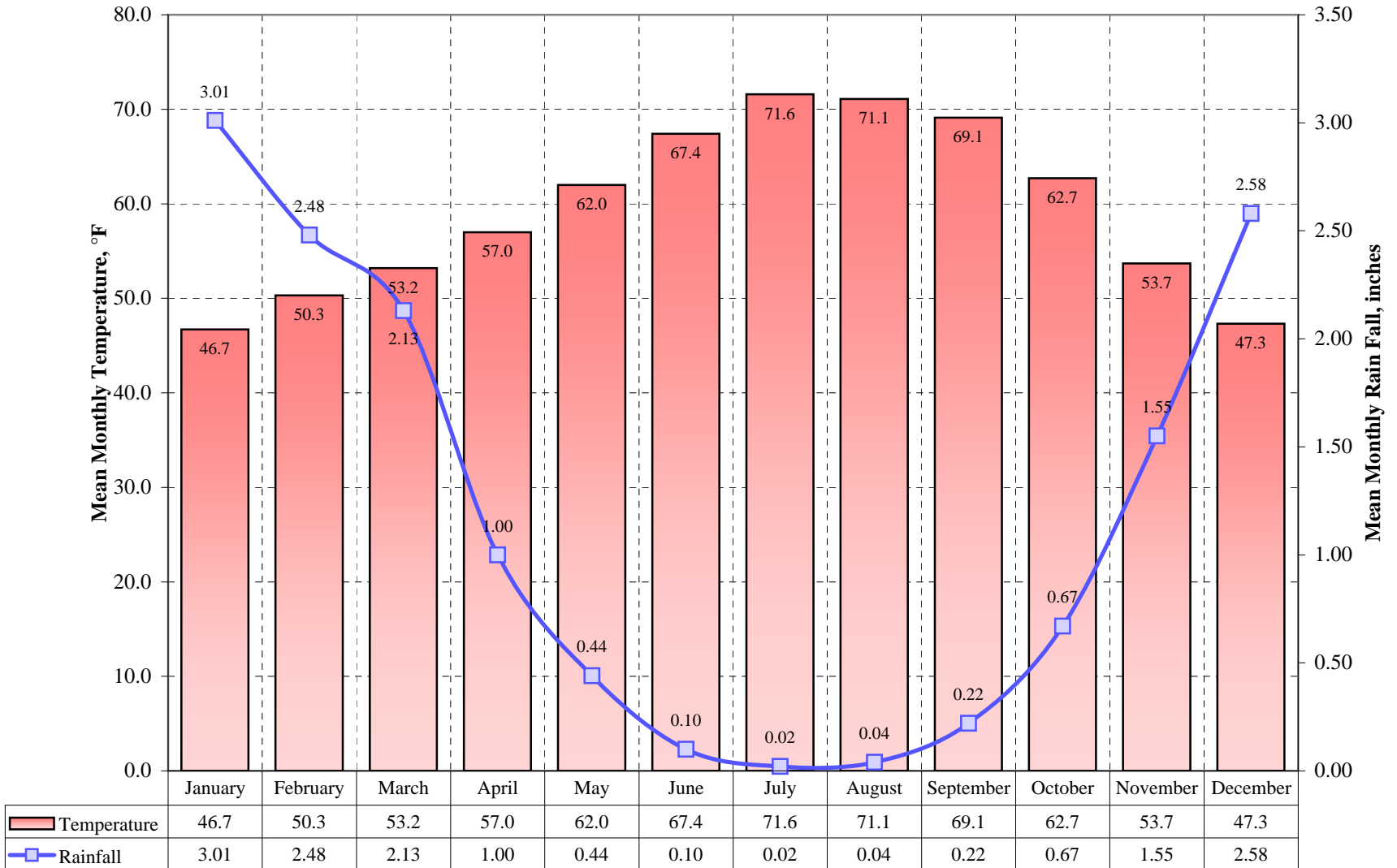
Projected

Livermore District

Housing Service Connection Estimate and Projections

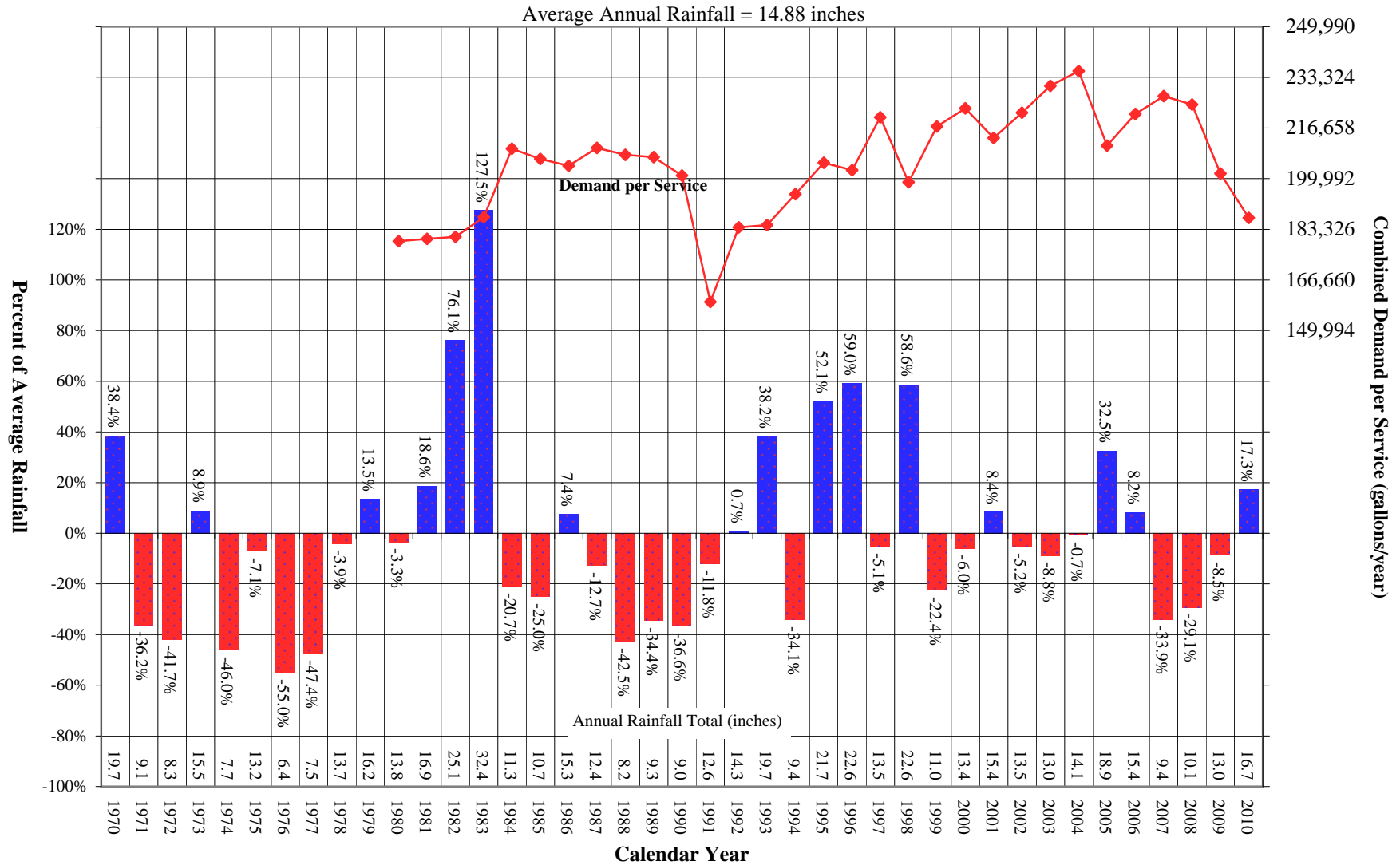


Livermore District Average Monthly Temperature and Rainfall



Livermore District

Comparison of Annual Rainfall to Historical Average with District Demand per Service



California Water Service Company - Livermore District

Water Supply and Demand Analysis and Projections

Temperature & Rainfall History (Fahrenheit, Inches)

Year	Annual Average Temp.	Annual Average Rainfall	Rainfall Percent Variation	Demand per Service (Gal / Yr)	Percent of Average Demand	Year	Annual Average Temp.	Annual Average Rainfall	Rainfall Percent Variation	Demand per Service (Gal / Yr)	Percent of Average Demand
1970	59.8	19.69	38.4%			1995	61.1	21.65	52.1%	205,194	100.1%
1971	57.9	9.08	-36.2%			1996	61.8	22.63	59.0%	202,771	98.9%
1972	58.0	8.29	-41.7%			1997	61.5	13.51	-5.1%	220,190	107.4%
1973	60.8	15.49	8.9%			1998	59.4	22.57	58.6%	198,882	97.0%
1974	60.1	7.68	-46.0%			1999	60.0	11.04	-22.4%	217,115	105.9%
1975	58.1	13.22	-7.1%			2000	60.8	13.38	-6.0%	223,090	108.8%
1976	59.2	6.40	-55.0%			2001	61.6	15.42	8.4%	213,377	104.1%
1977	60.1	7.49	-47.4%			2002	60.8	13.49	-5.2%	221,674	108.1%
1978	60.7	13.67	-3.9%			2003	61.4	12.98	-8.8%	230,497	112.4%
1979	59.5	16.15	13.5%			2004	61.1	14.13	-0.7%	235,351	114.8%
1980	59.7	13.76	-3.3%	179,448	87.5%	2005	61.1	18.85	32.5%	210,866	102.8%
1981	61.1	16.88	18.6%	180,160	87.9%	2006	60.9	15.40	8.2%	221,249	107.9%
1982	57.8	25.06	76.1%	180,863	88.2%	2007	60.9	9.41	-33.9%	227,112	110.8%
1983	59.7	32.37	127.5%	187,364	91.4%	2008	60.8	10.09	-29.1%	224,402	109.4%
1984	59.8	11.28	-20.7%	209,848	102.4%	2009	60.6	13.02	-8.5%	201,678	98.4%
1985	59.3	10.67	-25.0%	206,475	100.7%	2010	59.7	16.69	17.3%	187,075	91.2%
1986	60.2	15.28	7.4%	204,199	99.6%	2011					
1987	59.7	12.42	-12.7%	210,065	102.5%	2012					
1988	61.0	8.18	-42.5%	207,818	101.4%	2013					
1989	59.6	9.34	-34.4%	207,097	101.0%	2014					
1990	60.0	9.02	-36.6%	201,015	98.0%	2015					
1991	60.0	12.55	-11.8%	159,454	77.8%	2016					
1992	61.4	14.33	0.7%	183,967	89.7%	2017					
1993	60.2	19.67	38.2%	184,763	90.1%	2018					
1994	60.0	9.38	-34.1%	194,863	95.0%	2019					

Source: Western Regional Climate Center: <http://www.wrcc.dri.edu/cgi-bin/cliMAIN.pl?ca4997>

Calendar Year	Average Water Year	Normal Water Year	Single-Dry Water Year	Multiple-Dry Water Years			
				1	2	3	4
2004	-	2004	1994	1988	1989	1990	1991
Demand per Service (gal/yr)	205,028	235,351	194,863	207,818	207,097	201,015	159,454
Difference from Average	100.0%	100.0%	82.8%	88.3%	88.0%	85.4%	67.8%

California Water Service Company - Livermore District Water Supply and Demand Analysis and Projections

Temperature Data

Station:(044997) LIVERMORE															
From Year=1903 To Year=2010															
	Monthly Averages			Daily Extremes				Monthly Extremes				Max. Temp.		Min. Temp.	
	Max.	Min.	Mean	High	Date	Low	Date	Highest Mean	Year	Lowest Mean	Year	>= 90 F	<= 32 F	<= 32 F	<= 0 F
	F	F	F	F	dd/yyyy or yyyymmdd	F	dd/yyyy or yyyymmdd	F	-	F	-	# Days	# Days	# Days	# Days
January	56.7	36.6	46.7	77.0	6/1911	18.00	5/1961	52.0	1995	38.6	1949	0.0	0.0	9.6	0.0
February	61.2	39.4	50.3	80.0	15/1913	21.00	23/1942	55.0	1907	44.6	1949	0.0	0.0	5.0	0.0
March	65.3	41.2	53.2	88.0	30/1911	22.00	2/1971	60.5	2004	47.3	1935	0.0	0.0	2.1	0.0
April	70.5	43.5	57.0	96.0	1/1947	29.00	25/1942	62.4	1987	47.9	1967	0.6	0.0	0.5	0.0
May	76.4	47.6	62.0	108.0	30/1910	32.00	7/1916	71.1	2001	56.5	1964	3.3	0.0	0.0	0.0
June	83.1	51.6	67.4	113.0	16/1961	38.00	26/1917	74.7	1981	60.6	1923	8.3	0.0	0.0	0.0
July	89.0	54.2	71.6	113.0	7/1905	36.00	8/1974	78.3	2006	67.0	1920	15.0	0.0	0.0	0.0
August	88.2	54.0	71.1	112.0	1/1946	36.00	22/1940	76.2	1958	65.9	1917	14.0	0.0	0.0	0.0
September	85.9	52.4	69.1	115.0	3/1950	35.00	30/1950	73.8	1984	63.3	1925	10.8	0.0	0.0	0.0
October	77.7	47.7	62.7	106.0	2/1980	29.00	31/1935	68.1	1958	57.6	1916	3.2	0.0	0.1	0.0
November	66.4	41.1	53.7	93.0	2/1918	22.00	5/1942	59.0	1995	49.0	1947	0.0	0.0	3.1	0.0
December	57.5	37.0	47.3	79.0	12/1958	18.00	9/1972	53.0	1958	39.8	1963	0.0	0.0	9.0	0.0
Annual	73.2	45.5	59.3	115.0	19500903	18.00	19610105	61.8	1996	56.4	1963	55.3	0.0	29.4	0.0

	Jan	Feb	Mar	Apr	May	Jun	Jul	Aug	Sep	Oct	Nov	Dec	Total
Monthly Average ETo Report	1.24	1.68	3.41	4.80	6.20	6.90	7.44	6.51	5.10	3.41	1.80	0.93	49.42

Source: California Irrigation Management Information System (CIMIS), <http://www.cimis.water.ca.gov/cimis/welcome.jsp>, EvapoTranspiration (Eto) Zones Map, Zone 8

California Water Service Company - Livermore District Water Supply and Demand Analysis and Projections

Precipitaion Data

Station:(044997) LIVERMORE														
From Year=1903 To Year=2010														
	Precipitation											Total Snowfall		
	Mean	High	Year	Low	Year	1 Day Max.	>=	>=	>=	>=	Mean	High	Year	
	in.	in.	-	in.	-	in.	dd/yyyy or yyyymmdd	# Days	# Days	# Days	# Days	in.	in.	-
January	3.01	12.60	1911	0.20	1948	3.45	12/1952	10.00	6.00	2.00	0.00	0.00	3.00	1949
February	2.48	7.30	1998	0.05	1953	2.93	1/1963	9.00	6.00	2.00	0.00	0.00	0.10	1903
March	2.13	6.85	1907	0.00	1934	2.00	21/1937	9.00	5.00	1.00	0.00	0.00	0.00	1909
April	1.00	4.65	1967	0.02	1946	1.80	3/1958	6.00	3.00	0.00	0.00	0.00	0.00	1903
May	0.44	2.66	1915	0.00	1909	0.90	7/1905	3.00	1.00	0.00	0.00	0.00	0.00	1910
June	0.10	0.83	1929	0.00	1903	0.60	16/1995	1.00	0.00	0.00	0.00	0.00	0.00	1927
July	0.02	0.70	1980	0.00	1903	0.67	2/1980	0.00	0.00	0.00	0.00	0.00	0.00	1925
August	0.04	0.91	1976	0.00	1903	0.50	19/1983	0.00	0.00	0.00	0.00	0.00	0.00	1944
September	0.22	5.72	1918	0.00	1903	3.97	12/1918	1.00	0.00	0.00	0.00	0.00	0.00	1930
October	0.67	3.64	1962	0.00	1903	2.21	13/2009	3.00	2.00	0.00	0.00	0.00	0.00	1928
November	1.55	5.95	1950	0.00	1929	3.05	19/1950	6.00	4.00	1.00	0.00	0.00	0.00	1943
December	2.58	10.15	1955	0.10	1989	3.26	23/1955	9.00	6.00	2.00	0.00	0.00	2.00	1932
Annual	14.23	32.37	1983	6.40	1976	3.97	19180912	58.00	34.00	9.00	2.00	0.10	3.00	1949

California Water Service Company - Livermore District
Water Supply and Demand Analysis and Projections

Connections and Groundwater Facilities

Zone 7 Connections		
Number	Capacity	Status
	GPM	
Zone 7-I	2,000	
Zone 7-II	2,000	
Zone 7-IV	3,300	
Zone 7-V	2,000	
Zone 7-VI	2,000	
Zone 7-VII	2,000	
Zone 7-VIII	2,000	
Zone 7-IX	2,000	
Zone 7-X	2,000	
Capacities	19,300	GPM
	27.8	MGD
	31,131	AFY

Well Capacities				
	UNIT NO.	Design Capacity		Status
		Active (GPM)	Standby (GPM)	
1	5-01	190		Limited Operability
2	8-01	400		
3	9-01	650		
4	10-01	500		
5	12-01	800		
6	14-01	900		
7	15-01	825		
8	17-01		400	
9	19-01	750		
10	20-01	475		
11	24-01	600		
12	31-01	575		
Units	12	11	1	

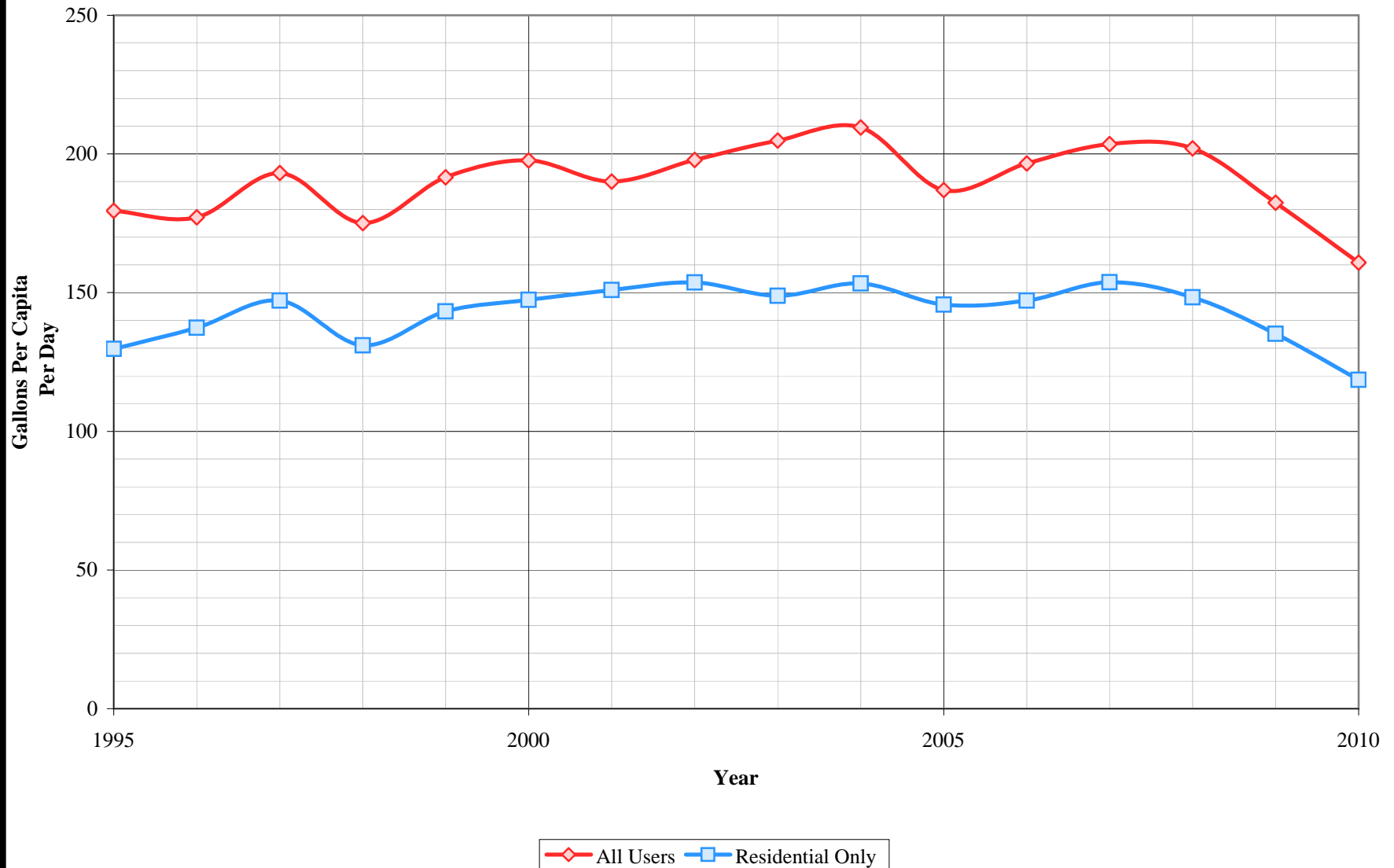
Capacities	7,065	6,665	400	GPM
	10.2	9.6	0.6	MGD
	11,396	10,751	645	AFY

Notes:
 1) Listed pump capacities on this worksheet represent design flowrates, actual flowrates are highly dependent on local system pressures, well characteristics, and other design criteria

 2) Values in bold are estimated

Updated 1/1/2011

Livermore District Per Capita Consumption



California Water Service Company - Livermore District
Water Supply and Demand Analysis and Projections

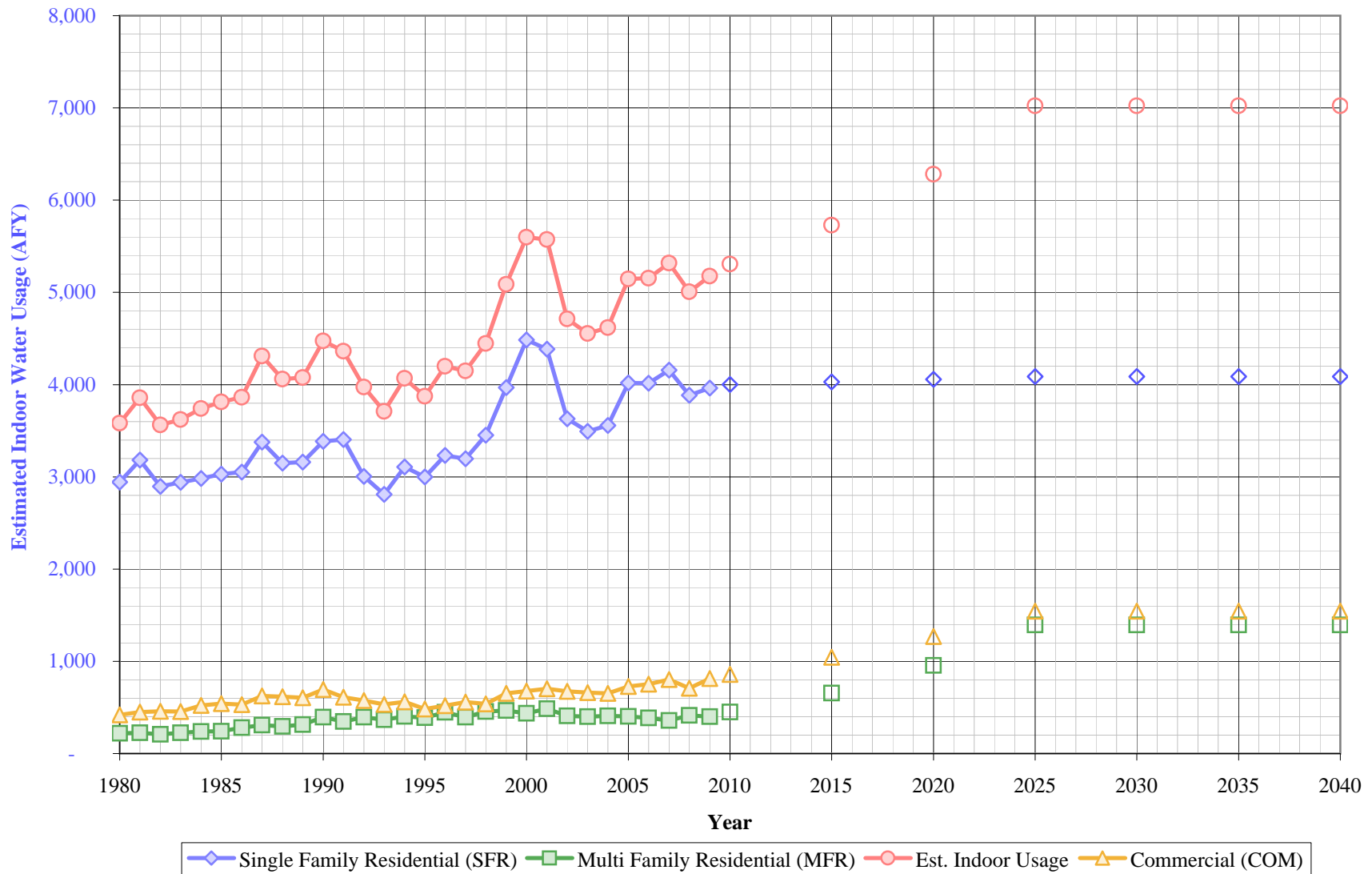
Per Capita Water Demand Calculation

Year	All Users			Residential Only		
	Usage (AFY)	Usage (MGY)	Gallons Per Capita Per Day	Usage (AFY)	Usage (MGY)	Gallons Per Capita Per Day
1995	9,351	3,047	179	6,757	2,202	130
1996	9,444	3,077	177	7,322	2,386	137
1997	10,525	3,430	193	8,020	2,613	147
1998	9,721	3,168	175	7,270	2,369	131
1999	10,791	3,516	192	8,068	2,629	143
2000	11,207	3,652	198	8,360	2,724	147
2001	10,861	3,539	190	8,625	2,810	151
2002	11,474	3,739	198	8,911	2,904	154
2003	11,967	3,899	205	8,697	2,834	149
2004	12,556	4,091	210	9,185	2,993	153
2005	11,416	3,720	187	8,895	2,899	146
2006	12,055	3,928	197	9,027	2,941	147
2007	12,417	4,046	204	9,383	3,057	154
2008	12,260	3,995	202	9,002	2,933	148
2009	11,014	3,589	182	8,158	2,658	135
2010	10,260	3,343	161	7,563	2,465	119
5 Yr. Avg.	11,601	3,780	189	8,627	2,811	141
10 Yr. Avg.	11,628	3,789	193	8,745	2,849	146

Five year average is from years 2006 through 2010.

Ten year average is from years 2001 through 2010.

Livermore District Estimated Indoor Water Usage



California Water Service Company - Livermore District
Water Supply and Demand Analysis and Projections

Estimated Indoor/Outdoor Water Usage

Year	Single Family Residential (SFR)								Multi Family Residential (MFR)				Commercial (COM)				Est. Indoor Usage AFY
	Metered Single Family Residential Indoor Use (Annualized 90% of January Total)			Indoor Flat Rate Usage (AFY)	Total SFR Indoor Usage			Multi Family Residential January Usage (CCF)	Multi Family Residential Indoor Use (Annualized 90% of January)			Commercial (CCF)	Commercial Indoor Use (Annualized 90% of January Total)				
	JAN (CCF)	AFY	AFY/Service		AFY	GPD/Service	%		AFY	GPD/Service	%		AFY	GPD/Service	%		
1980	118,681	2,943	0.25	0.00	2,943	221	55%	8,899	221	4,377	78%	16,863	418	623	70%	3,581	
1981	128,336	3,182	2.84	0.00	3,182	238	57%	9,072	225	4,462	77%	18,120	449	660	69%	3,856	
1982	116,790	2,896	2.59	0.00	2,896	216	56%	8,401	208	4,132	73%	18,529	459	673	70%	3,563	
1983	118,659	2,942	2.63	0.00	2,942	217	57%	9,018	224	4,436	71%	18,318	454	659	65%	3,620	
1984	120,244	2,981	2.66	0.00	2,981	217	51%	9,663	240	4,753	74%	21,005	521	740	63%	3,742	
1985	122,181	3,029	2.70	0.00	3,029	219	53%	9,706	241	4,670	67%	21,852	542	742	61%	3,812	
1986	123,104	3,052	2.72	0.00	3,052	219	52%	11,327	281	5,334	66%	21,413	531	719	58%	3,864	
1987	136,222	3,377	3.02	0.00	3,377	240	56%	12,388	307	5,961	74%	25,206	625	818	61%	4,309	
1988	127,027	3,149	2.81	0.00	3,149	222	54%	11,901	295	5,854	70%	24,860	616	809	60%	4,061	
1989	127,472	3,160	2.82	0.00	3,160	219	56%	12,604	312	5,812	74%	24,369	604	793	57%	4,077	
1990	136,488	3,384	3.02	0.00	3,384	232	56%	15,912	395	4,892	78%	27,979	694	923	68%	4,472	
1991	137,321	3,405	3.04	0.00	3,405	230	69%	14,053	348	4,147	72%	24,590	610	795	67%	4,363	
1992	121,139	3,003	2.68	0.00	3,003	201	54%	15,938	395	4,704	73%	23,168	574	746	58%	3,973	
1993	113,355	2,810	2.51	0.00	2,810	186	49%	14,764	366	4,300	68%	21,466	532	684	54%	3,709	
1994	125,302	3,107	2.77	0.00	3,107	202	52%	16,192	401	4,779	72%	22,611	561	708	57%	4,069	
1995	121,010	3,000	2.68	0.00	3,000	192	49%	15,723	390	4,640	67%	19,510	484	613	49%	3,874	
1996	130,377	3,232	2.89	0.00	3,232	203	48%	17,999	446	5,312	73%	20,986	520	651	49%	4,199	
1997	128,927	3,197	2.85	0.00	3,197	195	43%	15,930	395	4,701	64%	22,465	557	689	49%	4,148	
1998	139,180	3,451	3.08	0.00	3,451	206	52%	18,406	456	5,432	76%	21,755	539	657	43%	4,446	
1999	160,080	3,969	3.54	0.00	3,969	233	53%	18,823	467	5,555	75%	26,296	652	774	61%	5,088	
2000	180,885	4,485	4.00	0.00	4,485	262	58%	17,592	436	5,192	69%	27,348	678	752	60%	5,599	
2001	176,899	4,386	3.92	0.00	4,386	253	55%	19,592	486	5,782	81%	28,294	702	746	61%	5,573	
2002	146,361	3,629	3.24	0.00	3,629	206	43%	16,474	408	4,862	73%	27,182	674	700	55%	4,711	
2003	140,850	3,492	3.12	0.00	3,492	198	43%	16,152	400	4,767	68%	26,686	662	677	55%	4,554	
2004	143,450	3,557	3.18	0.00	3,557	196	41%	16,465	408	4,859	68%	26,344	653	661	53%	4,618	
2005	162,042	4,018	3.59	0.00	4,018	218	48%	16,185	401	4,777	74%	29,343	728	719	77%	5,146	
2006	161,968	4,016	3.59	0.00	4,016	216	47%	15,583	386	4,599	72%	30,331	752	735	56%	5,154	
2007	167,670	4,157	3.71	0.00	4,157	224	47%	14,471	359	4,271	66%	32,387	803	765	63%	5,319	
2008	156,664	3,884	3.47	0.00	3,884	210	46%	16,639	413	4,846	72%	28,592	709	634	51%	5,006	
2009	159,805	3,962	3.54	0.00	3,962	215	52%	16,150	400	4,704	71%	32,828	814	710	55%	5,176	
2010	---	---	---	---	4,000	217	52%	---	450	4,897	72%	---	858	719	59%	5,308	
2015	---	---	---	---	4,029	217	52%	---	656	4,897	72%	---	1,043	719	59%	5,728	
2020	---	---	---	---	4,057	217	52%	---	956	4,897	72%	---	1,269	719	59%	6,282	
2025	---	---	---	---	4,086	217	52%	---	1,395	4,897	72%	---	1,543	719	59%	7,023	
2030	---	---	---	---	4,086	217	52%	---	1,395	4,897	72%	---	1,543	719	59%	7,023	
2035	---	---	---	---	4,086	217	52%	---	1,395	4,897	72%	---	1,543	719	59%	7,023	
2040	---	---	---	---	4,086	217	52%	---	1,395	4,897	72%	---	1,543	719	59%	7,023	

California Water Service Company - Livermore District

Water Supply and Demand Analysis and Projections

Comparison of Projected Demand and Conservation Savings Between SBx7-7 Compliance Targets and Actual Proposed Programs

Year	SBx7-7 Compliance Target (gpcd)	Anticipated GPCD with Proposed Programs*	Estimated Population	Undadjusted Baseline Demand (AFY)	SBx7-7 Compliance Target Demand (AFY)	Anticipated Demand with Proposed Programs (AFY)	Compliance Target Savings Requirement (AFY)	Savings Due to Proposed Programs (AFY)
2005-2009 Average	194	194	54,359	11,832	11,832	11,832	0	0
2010	194	194	56,956	12,399	12,398	12,398	1	1
2011	191	194	57,644	12,548	12,337	12,526	212	22
2012	188	192	58,372	12,707	12,279	12,554	428	153
2013	185	190	59,144	12,875	12,225	12,587	650	287
2014	181	187	59,961	13,053	12,175	12,560	878	493
2015	178	185	60,827	13,241	12,128	12,605	1,113	636
2016	174	180	61,745	13,441	12,034	12,422	1,407	1,019
2017	170	174	62,717	13,653	11,943	12,238	1,710	1,415
2018	166	169	63,748	13,877	11,853	12,053	2,023	1,824
2019	162	163	64,840	14,115	11,766	11,868	2,349	2,247
2020	158	158	65,998	14,367	11,681	11,681	2,686	2,686
2021	158	158	67,226	14,634	11,898	11,898	2,736	2,736
2022	158	158	68,527	14,917	12,128	12,128	2,789	2,789
2023	158	158	69,906	15,218	12,372	12,372	2,845	2,845
2024	158	158	71,368	15,536	12,631	12,631	2,905	2,905
2025	158	158	72,918	15,873	12,905	12,905	2,968	2,968
2026	158	158	73,034	15,898	12,926	12,926	2,973	2,973
2027	158	158	73,150	15,924	12,946	12,946	2,977	2,977
2028	158	158	73,265	15,949	12,967	12,967	2,982	2,982
2029	158	158	73,381	15,974	12,987	12,987	2,987	2,987
2030	158	158	73,497	15,999	13,008	13,008	2,992	2,992
2031	158	158	73,612	16,024	13,028	13,028	2,996	2,996
2032	158	158	73,728	16,050	13,049	13,049	3,001	3,001
2033	158	158	73,844	16,075	13,069	13,069	3,006	3,006
2034	158	158	73,960	16,100	13,090	13,090	3,010	3,010
2035	158	158	74,075	16,125	13,110	13,110	3,015	3,015
2036	158	158	74,191	16,150	13,131	13,131	3,020	3,020
2037	158	158	74,307	16,176	13,151	13,151	3,025	3,025
2038	158	158	74,423	16,201	13,172	13,172	3,029	3,029
2039	158	158	74,538	16,226	13,192	13,192	3,034	3,034
2040	158	158	74,654	16,251	13,212	13,212	3,039	3,039

*Note: The district is not projected to achieve its district-specific 2015 SBx7-7 compliance target through the proposed 2011-2015 conservation program portfolio. The district will achieve compliance with its 2015 SBx7-7 compliance target through a regional alliance. For the purpose of this analysis it is assumed that there will be a linear reduction in GPCD from 2015-2020 to achieve the district-specific 2020 SBx7-7 compliance target. The district may ultimately elect to achieve 2020 SBx7-7 compliance through a regional alliance. GPCD will remain flat from 2020 through 2040.