

Water Resources Planning Department

**Projection Analysis Work Sheets
for
Bakersfield District**

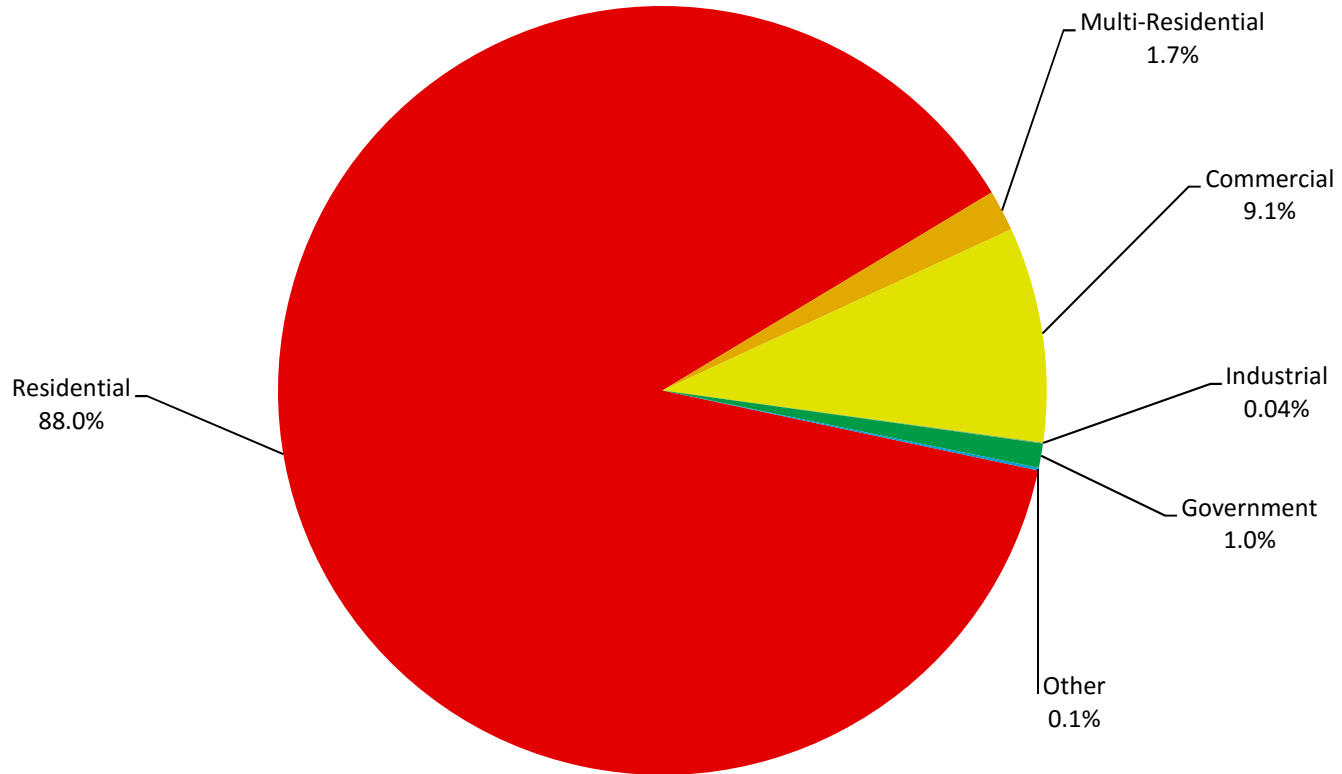
2015



Table of Contents for Worksheets

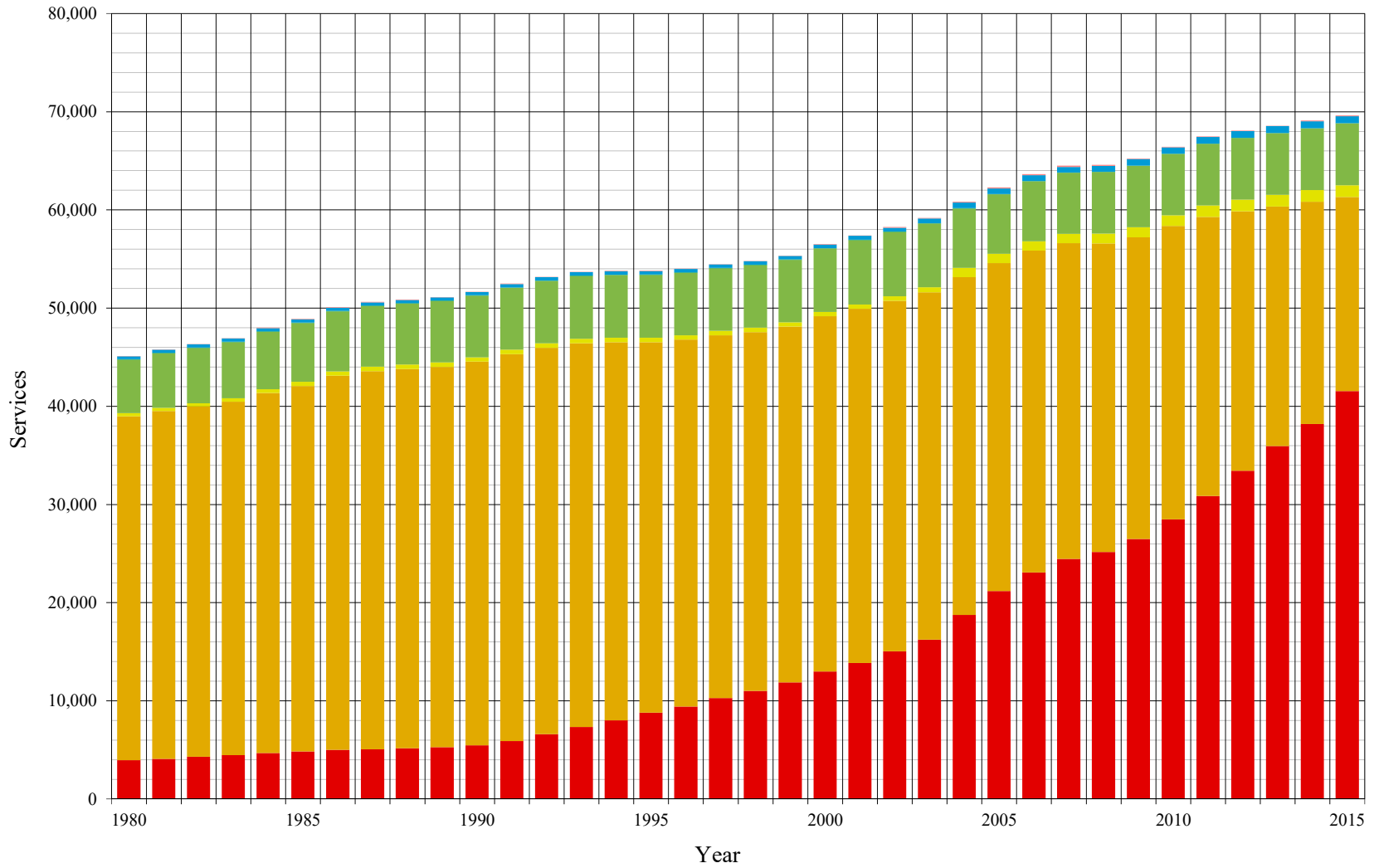
Worksheet	Title
1	<u>Annual Services</u>
2	<u>Service Growth Percentage</u>
3	<u>District Sales (AF)</u>
4	<u>Demand per Service (Gallons per Day)</u>
5	<u>Percentage Change in Annual Demand</u>
6	<u>Percentage of Total Sales</u>
7	<u>Percentage of Total Demand</u>
8	<u>Actual & Projected Annual Average Services</u>
9	<u>Actual & Projected Demand in Acre-Feet</u>
10	<u>Projected Annual Supply by Source</u>
11	<u>Historical and Projected Average Day, Maximum Day, and Peak Demands</u>
12	<u>Population Estimate</u>
13	<u>Temperature & Rainfall History</u>
14	<u>Groundwater Facilities (if available)</u>
15	<u>Per Capita Water Demand Calculation</u>
16	<u>Indoor/Outdoor Water Usage</u>
17	<u>SB-7 Compliance Demand Worksheet</u>

Distribution of Services (2015)



Historical Services

■ Single Family (MTR) ■ Single Family (FLT) ■ Multi Family (MFR) ■ Commercial (COM) ■ (IND) ■ Government (GOV) ■ Other (OTH)



California Water Service Company - Bakersfield District
Water Supply and Demand Analysis and Projections
Average Annual Services

Year	Single Family (MTR)	Single Family (FLT)	Single Family (Total)	Multi Family (MFR)	Commercial (COM)	Industrial (IND)	Government (GOV)	Other (OTH)	Total	Annual Change
1980	3,945	35,027	38,972	318	5,435	57	310	31	45,122	
1981	4,076	35,441	39,517	330	5,532	56	310	33	45,778	656
1982	4,289	35,685	39,975	331	5,622	56	310	34	46,327	550
1983	4,468	35,996	40,463	354	5,705	54	310	40	46,927	600
1984	4,668	36,672	41,339	384	5,858	52	313	48	47,995	1,068
1985	4,842	37,216	42,057	419	5,997	51	326	48	48,898	903
1986	4,992	38,105	43,098	441	6,111	49	330	47	50,075	1,177
1987	5,044	38,533	43,578	452	6,173	48	328	37	50,616	541
1988	5,176	38,613	43,789	450	6,206	48	330	40	50,863	247
1989	5,282	38,727	44,009	447	6,245	47	337	35	51,120	257
1990	5,456	39,079	44,535	449	6,266	47	335	33	51,664	544
1991	5,905	39,406	45,311	450	6,286	47	343	44	52,480	816
1992	6,602	39,345	45,947	451	6,350	47	349	34	53,178	698
1993	7,334	39,076	46,410	455	6,388	46	355	38	53,692	513
1994	8,000	38,513	46,513	456	6,378	44	355	37	53,784	92
1995	8,784	37,720	46,504	458	6,400	45	357	46	53,810	26
1996	9,400	37,373	46,773	446	6,358	43	350	48	54,017	207
1997	10,288	36,927	47,215	448	6,374	41	350	48	54,477	460
1998	11,011	36,538	47,549	448	6,364	40	352	49	54,802	326
1999	11,871	36,226	48,097	446	6,355	41	351	52	55,342	540
2000	12,972	36,188	49,160	448	6,443	40	378	56	56,525	1,183
2001	13,847	36,068	49,915	450	6,541	41	399	50	57,396	871
2002	15,033	35,705	50,737	449	6,558	40	399	57	58,239	843
2003	16,218	35,380	51,598	516	6,480	37	476	62	59,168	929
2004	18,737	34,391	53,128	970	6,024	37	572	78	60,809	25
2005	21,168	33,395	54,563	960	6,047	36	573	93	62,271	3,103
2006	23,069	32,776	55,844	936	6,124	36	578	122	63,640	2,831
2007	24,444	32,168	56,612	931	6,219	35	579	132	64,507	2,237
2008	25,154	31,418	56,572	998	6,269	33	594	103	64,568	928
2009	26,478	30,720	57,198	1,035	6,245	32	653	69	65,232	725
2010	28,480	29,877	58,357	1,089	6,229	32	661	56	66,424	1,855
2011	30,848	28,422	59,270	1,185	6,249	32	670	55	67,462	2,229
2012	33,434	26,419	59,852	1,194	6,262	32	685	51	68,076	1,652
2013	35,947	24,391	60,338	1,194	6,260	31	693	53	68,568	1,107
2014	38,190	22,635	60,825	1,190	6,273	30	696	69	69,083	1,007
2015	41,541	19,753	61,294	1,199	6,305	30	712	76	69,616	1,047
5 Yr Avg.	35,992	24,324	60,316	1,192	6,270	31	691	61	68,561	1,570
10 Yr Avg.	30,758	27,858	58,616	1,095	6,243	32	652	79	66,718	1,767
15 Yr Avg.	26,172	30,235	56,407	953	6,272	34	596	75	64,337	1,435
20 Yr Avg.	22,406	31,839	54,245	827	6,299	36	536	69	62,011	1,154

Note: Reclassification occurred between categories from 2007 to 2009

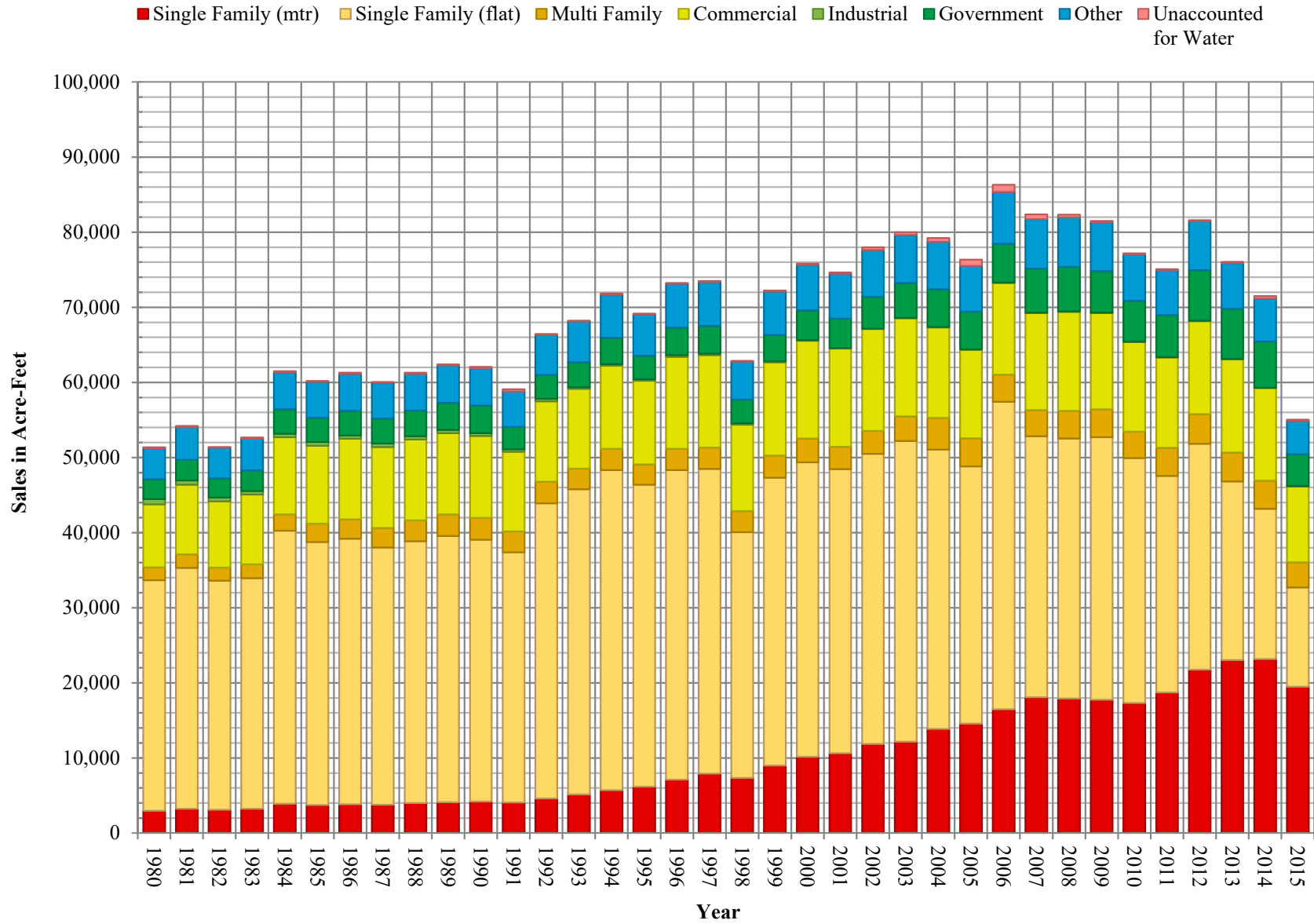
California Water Service Company - Bakersfield District
Water Supply and Demand Analysis and Projections
Service Growth Percentage

Year	Single Family (SFR)	Single Family (FLT)	Single Family (Total)	Multi Family (MFR)	Commercial (COM)	Industrial (IND)	Government (GOV)	Other (OTH)	Total
1981	3.33%	1.18%	1.40%	3.91%	1.78%	-1.61%	0.16%	5.66%	1.45%
1982	5.23%	0.69%	1.16%	0.23%	1.63%	0.30%	-0.16%	4.08%	1.20%
1983	4.16%	0.87%	1.22%	6.98%	1.49%	-3.12%	0.24%	17.16%	1.30%
1984	4.47%	1.88%	2.16%	8.55%	2.68%	-4.13%	0.83%	20.92%	2.27%
1985	3.73%	1.48%	1.74%	9.15%	2.36%	-3.19%	4.10%	0.52%	1.88%
1986	3.11%	2.39%	2.47%	5.11%	1.91%	-2.81%	1.20%	-3.10%	2.41%
1987	1.03%	1.12%	1.11%	2.51%	1.01%	-1.87%	-0.38%	-20.60%	1.08%
1988	2.61%	0.21%	0.48%	-0.50%	0.55%	-1.04%	0.58%	7.83%	0.49%
1989	2.05%	0.29%	0.50%	-0.54%	0.62%	-1.22%	1.99%	-12.66%	0.51%
1990	3.29%	0.91%	1.20%	0.34%	0.33%	-0.53%	-0.54%	-6.41%	1.06%
1991	8.23%	0.84%	1.74%	0.28%	0.32%	-0.36%	2.34%	34.52%	1.58%
1992	11.81%	-0.15%	1.40%	0.17%	1.02%	1.43%	1.87%	-23.40%	1.33%
1993	11.08%	-0.68%	1.01%	0.94%	0.59%	-2.99%	1.77%	13.55%	0.97%
1994	9.08%	-1.44%	0.22%	0.27%	-0.15%	-5.26%	-0.02%	-3.47%	0.17%
1995	9.80%	-2.06%	-0.02%	0.29%	0.35%	2.68%	0.47%	24.72%	0.05%
1996	7.02%	-0.92%	0.58%	-2.46%	-0.67%	-4.66%	-1.94%	2.88%	0.39%
1997	9.45%	-1.19%	0.95%	0.45%	0.26%	-3.91%	-0.05%	0.70%	0.85%
1998	7.02%	-1.05%	0.71%	0.02%	-0.16%	-2.04%	0.52%	2.43%	0.60%
1999	7.81%	-0.85%	1.15%	-0.46%	-0.14%	2.08%	-0.14%	5.09%	0.99%
2000	9.27%	-0.10%	2.21%	0.30%	1.39%	-2.44%	7.73%	7.59%	2.14%
2001	6.74%	-0.33%	1.54%	0.50%	1.52%	2.30%	5.51%	-9.91%	1.54%
2002	8.57%	-1.01%	1.65%	-0.26%	0.25%	-3.06%	0.04%	13.00%	1.47%
2003	7.88%	-0.91%	1.70%	15.00%	-1.19%	-6.95%	19.07%	9.00%	1.59%
2004	15.53%	-2.80%	2.97%	87.99%	-7.03%	1.36%	20.26%	26.66%	2.77%
2005	12.97%	-2.90%	2.70%	-1.04%	0.38%	-4.69%	0.12%	18.80%	2.40%
2006	8.98%	-1.86%	2.35%	-2.52%	1.27%	0.23%	0.90%	31.92%	2.20%
2007	5.96%	-1.85%	1.37%	-0.49%	1.55%	-2.34%	0.20%	7.57%	1.36%
2008	2.91%	-2.33%	-0.07%	7.13%	0.81%	-5.02%	2.55%	-21.99%	0.09%
2009	5.26%	-2.22%	1.11%	3.78%	-0.38%	-2.52%	10.01%	-32.90%	1.03%
2010	7.56%	-2.74%	2.03%	5.13%	-0.25%	-2.07%	1.24%	-18.52%	1.83%
2011	8.31%	-4.87%	1.56%	8.86%	0.32%	0.79%	1.34%	-1.19%	1.56%
2012	8.38%	-7.05%	0.98%	0.76%	0.20%	0.52%	2.30%	-8.87%	0.91%
2013	7.52%	-7.68%	0.81%	0.04%	-0.04%	-4.43%	1.08%	5.78%	0.72%
2014	6.24%	-7.20%	0.81%	-0.38%	0.22%	-2.18%	0.42%	29.49%	0.75%
2015	8.78%	-12.73%	0.77%	0.76%	0.51%	1.39%	2.26%	9.64%	0.77%
5 Yr. Avg.	7.85%	-7.91%	0.99%	2.01%	0.24%	-0.78%	1.48%	6.97%	0.94%
10 Yr. Avg.	6.99%	-5.05%	1.17%	2.31%	0.42%	-1.56%	1.37%	0.09%	1.12%
15 Yr. Avg.	8.11%	-3.90%	1.49%	1.71%	-0.12%	-1.78%	1.50%	3.90%	1.40%
20 Yr. Avg.	8.11%	-3.13%	1.39%	1.12%	-0.06%	-1.88%	1.42%	3.86%	1.30%

Note: values in red excluded from averages

PAGE LEFT BLANK INTENTIONALLY

Historical Sales

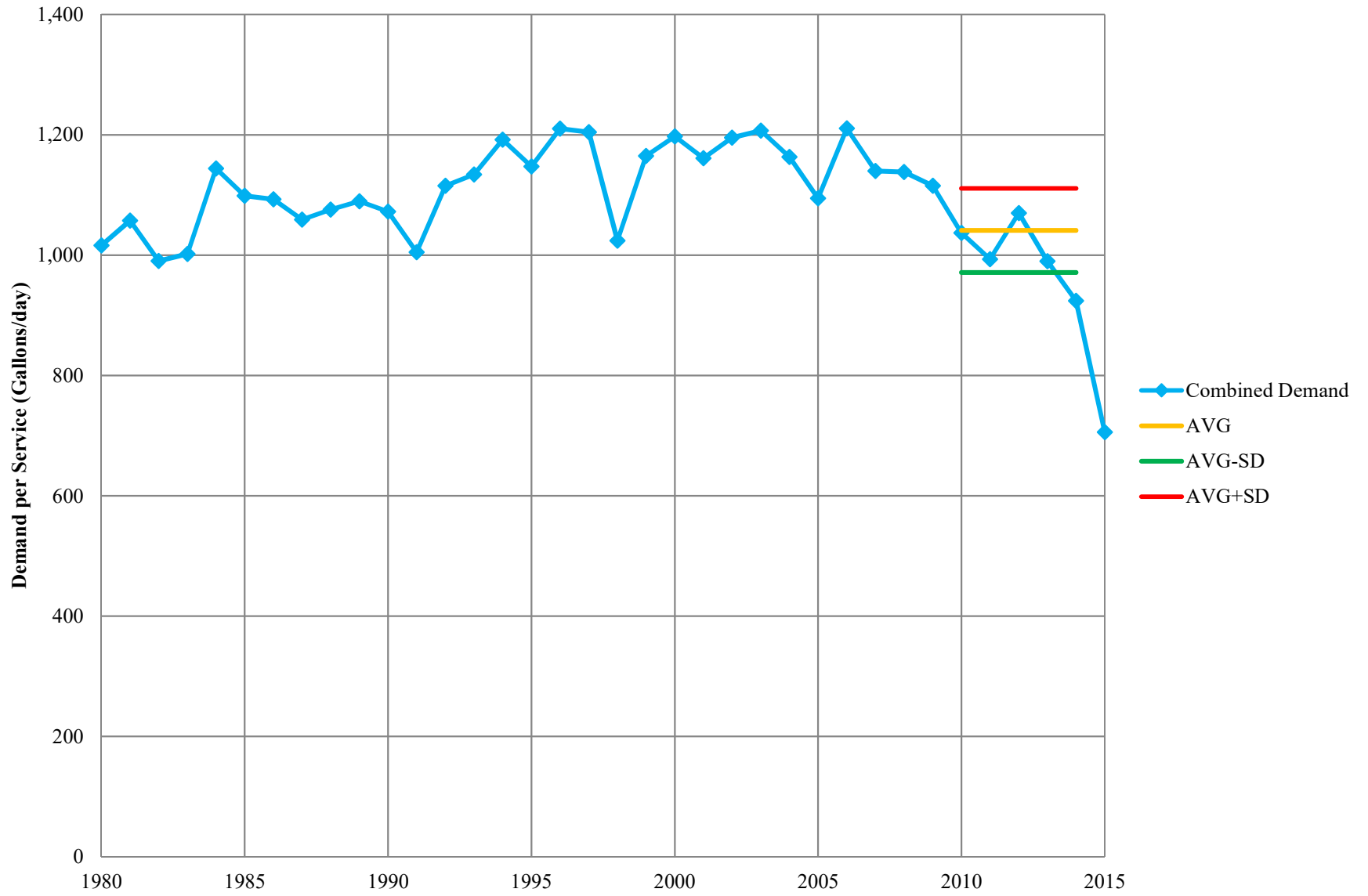


California Water Service Company - Bakersfield District
Water Supply and Demand Analysis and Projections
Sales (AF)

Worksheet 3

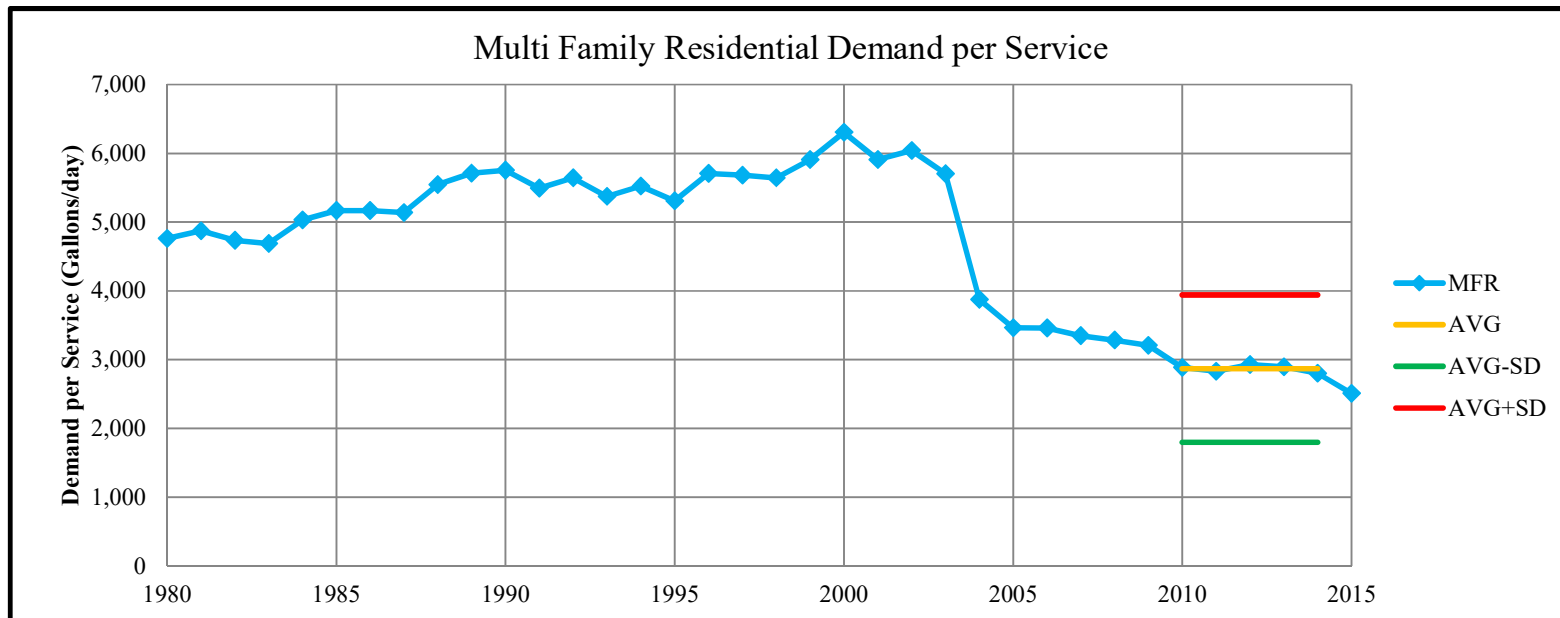
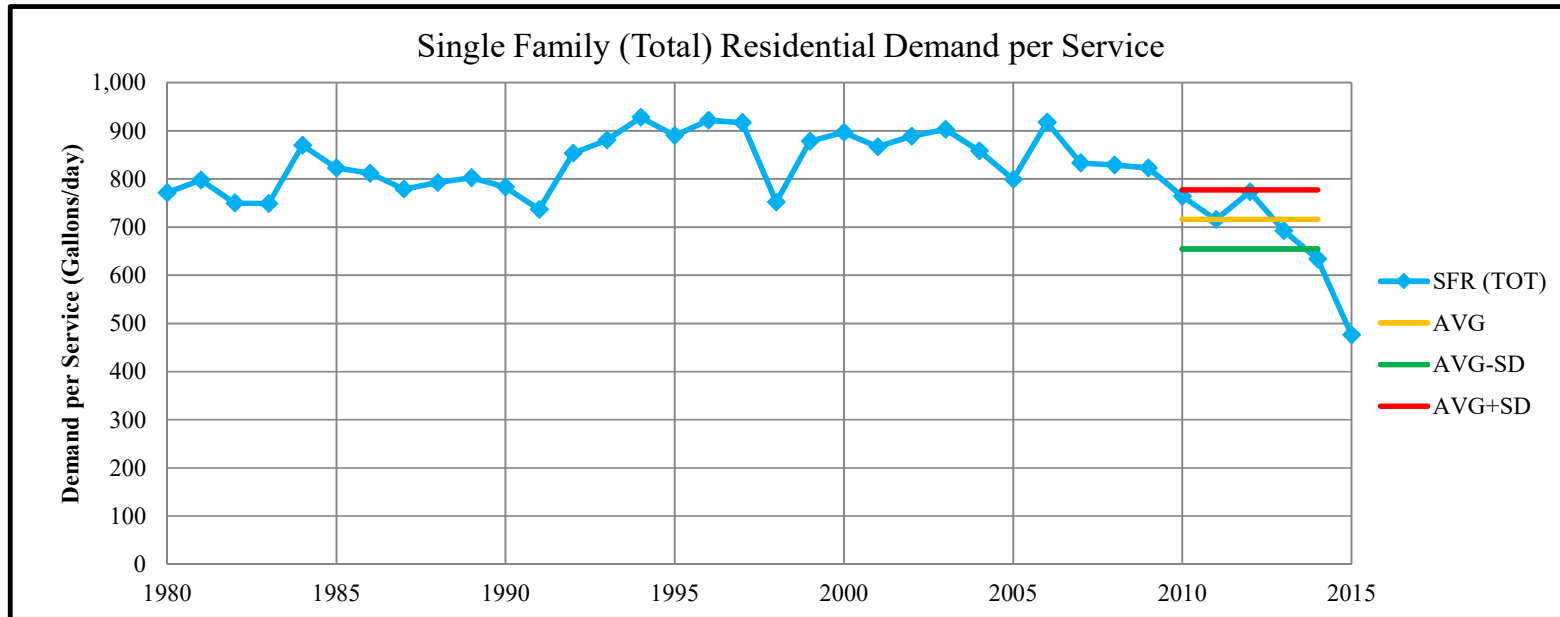
Year	Single Family			Multi Family (MFR)	Commercial (COM)	Industrial (IND)	Government (GOV)	Other (OTH)	Unaccounted for Water (UAFW)	Total Sales (AF)	Total Demand (AF)	Total Demand (MGal)
	(SFR)	(FLT)	(Total)									
1980	2,977	30,701	33,679	1,695	8,386	730	2,624	147	4,110	47,261	51,371	16,739
1981	3,248	32,059	35,307	1,803	9,255	596	2,727	193	4,337	49,880	54,218	17,667
1982	3,117	30,480	33,597	1,755	8,807	525	2,535	72	4,112	47,290	51,403	16,750
1983	3,245	30,691	33,937	1,859	9,291	470	2,728	176	4,214	48,461	52,674	17,164
1984	3,898	36,373	40,271	2,165	10,261	474	3,255	162	4,921	56,588	61,509	20,043
1985	3,750	35,005	38,756	2,427	10,385	484	3,219	105	4,815	55,377	60,192	19,614
1986	3,847	35,353	39,200	2,552	10,733	462	3,265	178	4,903	56,389	61,292	19,972
1987	3,778	34,241	38,019	2,601	10,782	446	3,340	59	4,804	55,247	60,052	19,568
1988	4,001	34,851	38,852	2,792	10,751	437	3,402	149	4,903	56,384	61,287	19,970
1989	4,097	35,469	39,566	2,861	10,820	430	3,611	118	4,992	57,405	62,396	20,332
1990	4,208	34,857	39,066	2,893	10,897	381	3,682	174	4,965	57,093	62,057	20,221
1991	4,079	33,313	37,392	2,770	10,597	340	2,973	277	4,726	54,349	59,075	19,250
1992	4,595	39,327	43,921	2,849	10,723	313	3,178	136	5,315	61,121	66,436	21,648
1993	5,144	40,651	45,795	2,738	10,610	228	3,284	94	5,457	62,750	68,206	22,225
1994	5,720	42,614	48,334	2,822	11,084	179	3,535	119	5,745	66,071	71,817	23,402
1995	6,169	40,197	46,366	2,720	11,139	190	3,113	103	5,533	63,631	69,164	22,537
1996	7,107	41,198	48,305	2,853	12,263	211	3,643	111	5,860	67,386	73,246	23,867
1997	7,914	40,563	48,477	2,853	12,323	192	3,658	118	5,880	67,621	73,501	23,950
1998	7,346	32,705	40,051	2,834	11,503	183	3,159	104	5,029	57,834	62,863	20,484
1999	8,976	38,342	47,318	2,953	12,386	167	3,489	129	5,778	66,442	72,220	23,533
2000	10,144	39,226	49,370	3,162	13,027	71	3,949	178	6,066	69,756	75,822	24,707
2001	10,643	37,814	48,457	2,978	13,084	57	3,914	192	5,972	68,682	74,655	24,326
2002	11,863	38,637	50,500	3,036	13,565	60	4,223	362	6,239	71,747	77,986	25,412
2003	12,177	40,020	52,197	3,296	13,046	52	4,647	357	6,400	73,594	79,994	26,066
2004	13,888	37,191	51,078	4,213	12,031	55	5,014	500	6,338	72,890	79,229	25,817
2005	14,571	34,266	48,837	3,726	11,765	77	5,007	818	6,107	70,231	76,338	24,875
2006	16,466	40,936	57,402	3,625	12,197	72	5,151	953	6,904	79,399	86,304	28,122
2007	18,084	34,743	52,827	3,494	12,896	85	5,854	616	6,589	75,773	82,362	26,838
2008	17,906	34,622	52,527	3,673	13,195	66	5,927	344	6,585	75,732	82,317	26,823
2009	17,769	34,927	52,696	3,718	12,823	53	5,534	152	6,520	74,977	81,497	26,556
2010	17,334	32,598	49,932	3,520	11,932	45	5,444	131	6,174	71,004	77,178	25,149
2011	18,726	28,811	47,537	3,757	12,014	56	5,599	95	6,005	69,058	75,063	24,460
2012	21,767	30,079	51,846	3,919	12,389	56	6,725	134	6,528	75,069	81,597	26,589
2013	23,050	23,753	46,803	3,874	12,404	51	6,674	144	6,083	69,950	76,033	24,775
2014	23,161	20,024	43,185	3,734	12,327	51	6,135	356	5,721	65,786	71,507	23,301
2015	19,508	13,179	32,688	3,368	10,104	57	4,216	196	4,403	50,630	55,033	17,932

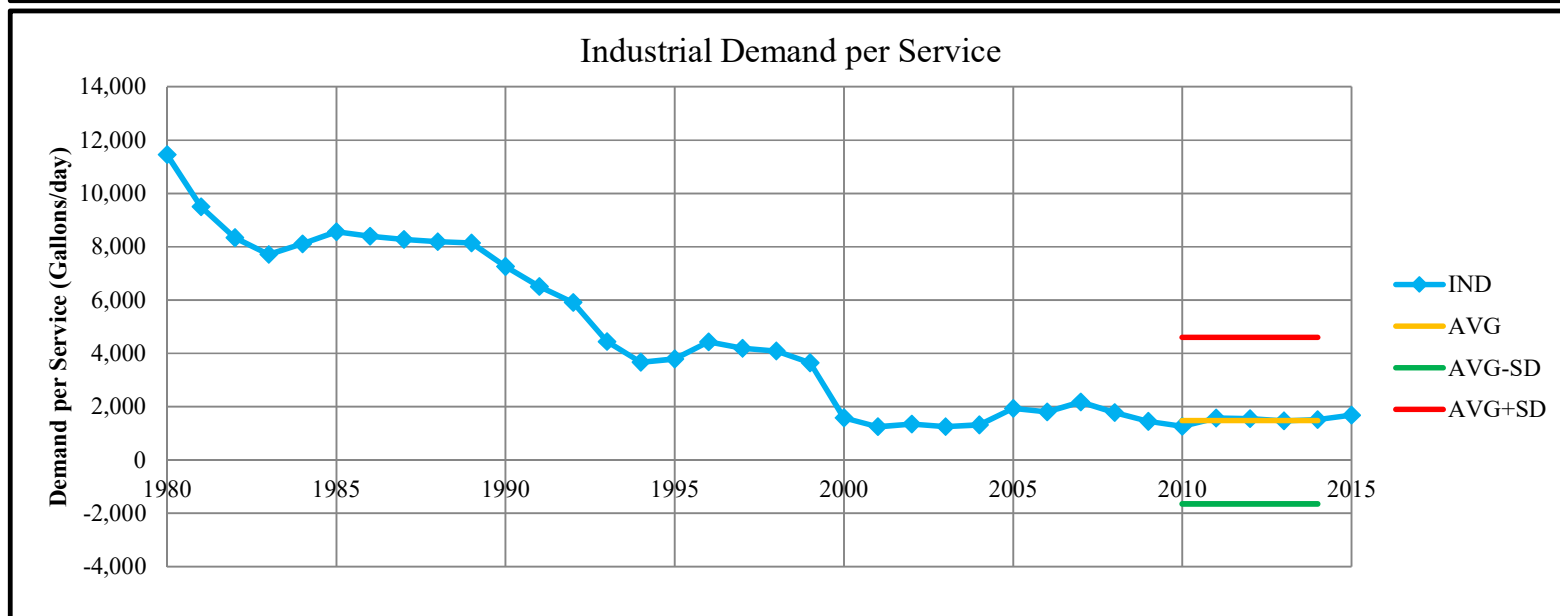
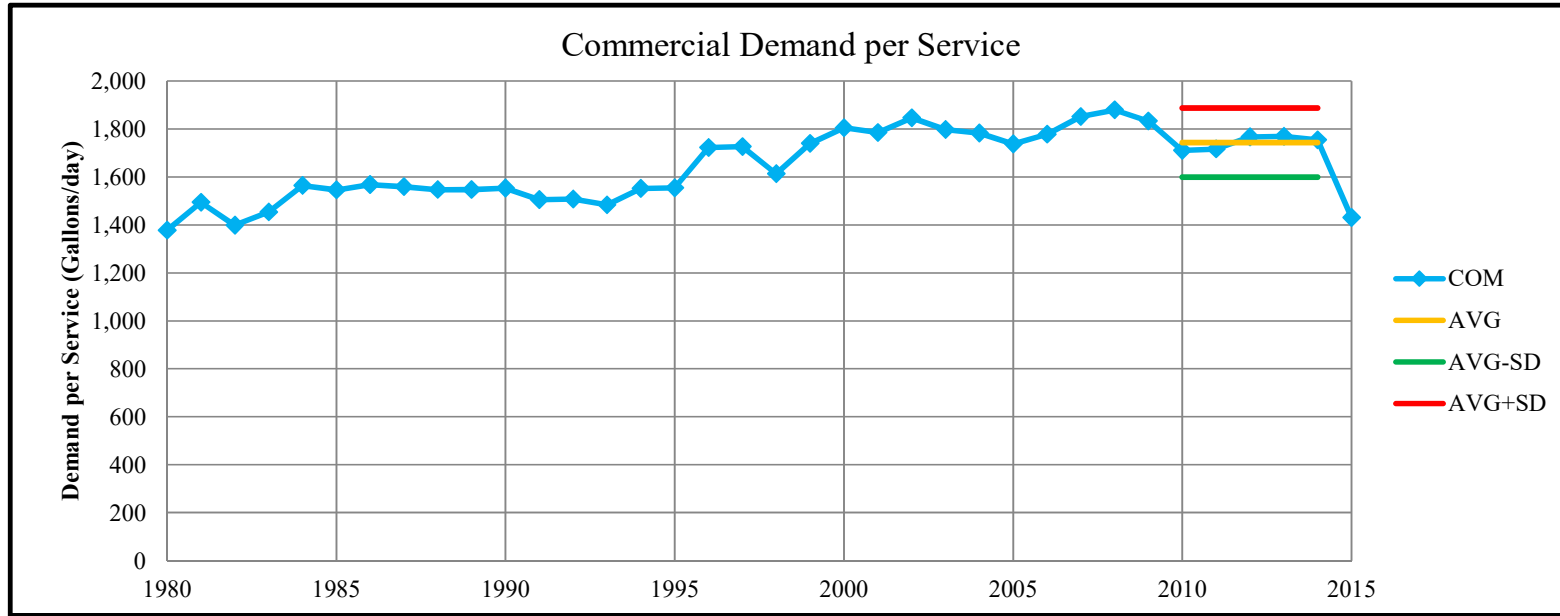
Combined Demand per Service

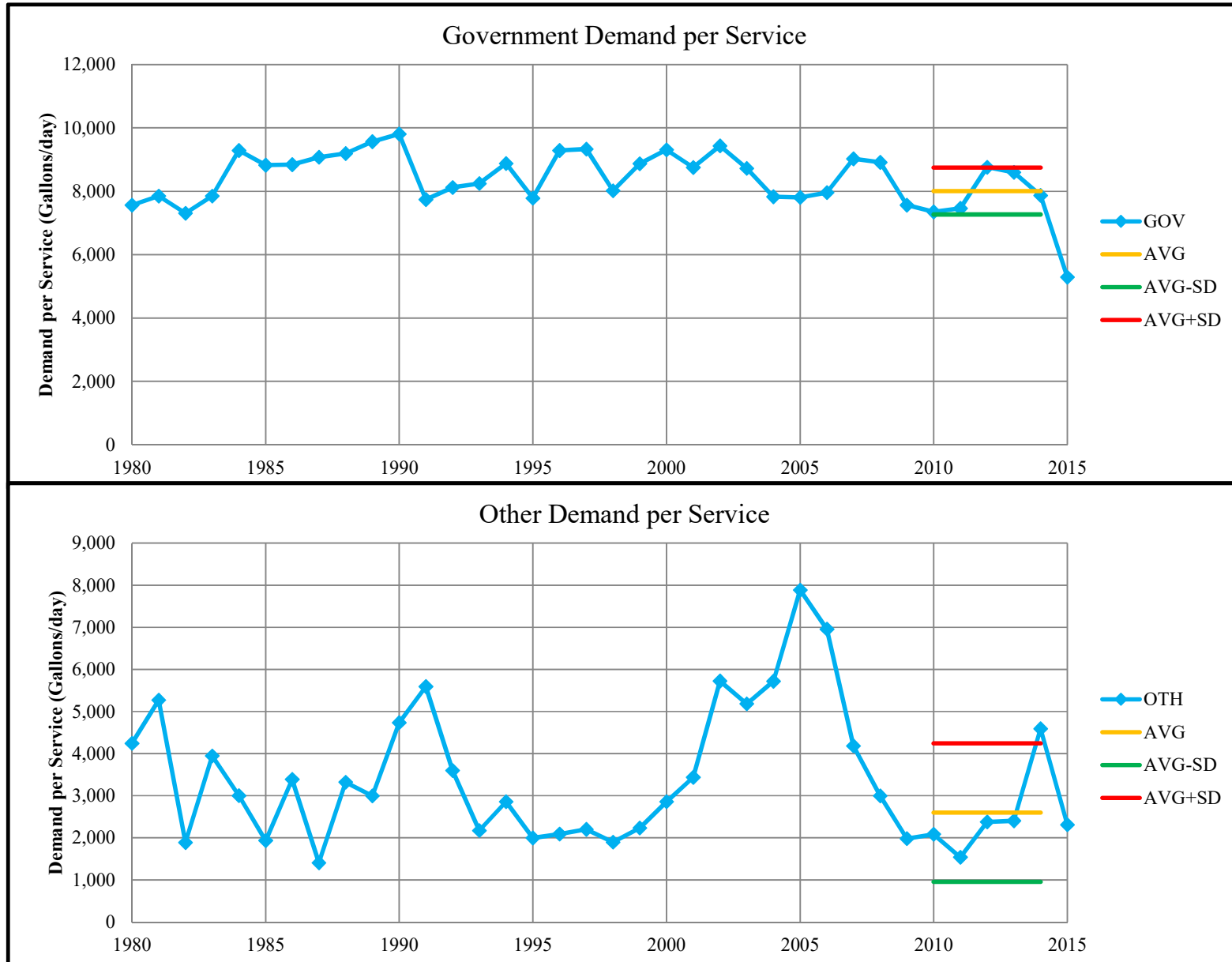


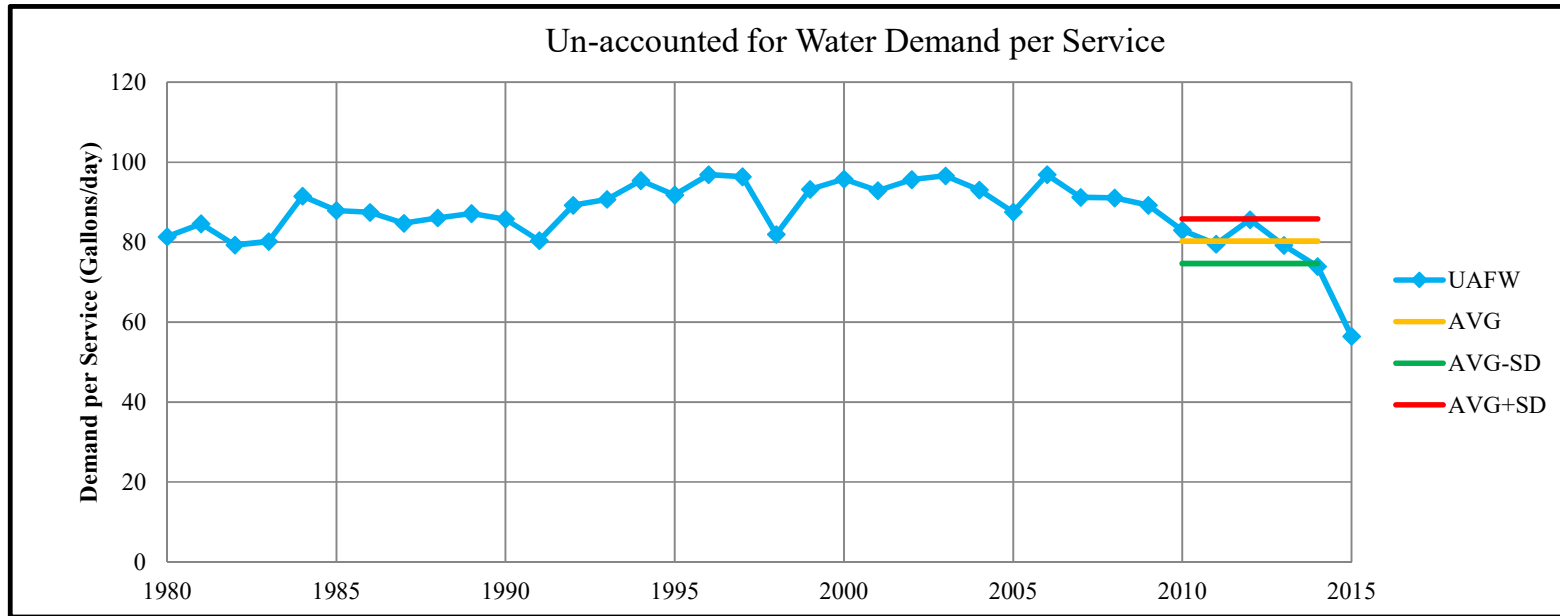
California Water Service Company - Bakersfield District
Water Supply and Demand Analysis and Projections
Demand per Service (Gallons per Day)

Year	SFR (MTR)	SFR (FLT)	SFR (TOT)	MFR	COM	IND	GOV	OTH	UAFW	Combined Demand/Serv
1980	674	782	771	4,763	1,378	11,450	7,569	4,242	81	1,016
1981	711	808	798	4,874	1,494	9,501	7,853	5,270	85	1,057
1982	649	763	750	4,735	1,399	8,343	7,311	1,884	79	991
1983	649	761	749	4,687	1,454	7,709	7,850	3,946	80	1,002
1984	746	885	870	5,031	1,564	8,104	9,290	3,002	92	1,144
1985	691	840	823	5,166	1,546	8,557	8,825	1,936	88	1,099
1986	688	828	812	5,168	1,568	8,395	8,843	3,388	87	1,093
1987	669	793	779	5,138	1,559	8,274	9,080	1,406	85	1,059
1988	690	806	792	5,543	1,546	8,190	9,196	3,321	86	1,076
1989	692	818	803	5,711	1,547	8,144	9,569	2,996	87	1,090
1990	689	796	783	5,756	1,553	7,263	9,811	4,736	86	1,072
1991	617	755	737	5,495	1,505	6,509	7,741	5,590	80	1,005
1992	621	892	853	5,643	1,508	5,912	8,124	3,598	89	1,115
1993	626	929	881	5,373	1,483	4,438	8,250	2,175	91	1,134
1994	638	988	928	5,521	1,551	3,667	8,881	2,856	95	1,192
1995	627	951	890	5,307	1,554	3,792	7,783	1,996	92	1,147
1996	675	984	922	5,706	1,722	4,431	9,290	2,089	97	1,211
1997	687	981	917	5,681	1,726	4,184	9,332	2,201	96	1,205
1998	596	799	752	5,642	1,614	4,084	8,018	1,895	82	1,024
1999	675	945	878	5,906	1,740	3,649	8,869	2,231	93	1,165
2000	698	968	897	6,305	1,805	1,578	9,315	2,859	96	1,198
2001	686	936	867	5,910	1,786	1,246	8,751	3,435	93	1,161
2002	705	966	889	6,039	1,847	1,355	9,439	5,725	96	1,195
2003	670	1,010	903	5,701	1,797	1,250	8,723	5,182	97	1,207
2004	662	965	858	3,876	1,783	1,316	7,827	5,720	93	1,163
2005	615	916	799	3,465	1,737	1,934	7,807	7,884	88	1,094
2006	637	1,115	918	3,458	1,778	1,808	7,959	6,957	97	1,211
2007	660	964	833	3,350	1,851	2,184	9,028	4,181	91	1,140
2008	635	984	829	3,286	1,879	1,781	8,913	2,994	91	1,138
2009	599	1,015	822	3,206	1,833	1,454	7,565	1,977	89	1,115
2010	543	974	764	2,887	1,710	1,265	7,350	2,083	83	1,037
2011	542	905	716	2,831	1,716	1,573	7,460	1,536	79	993
2012	581	1,016	773	2,931	1,766	1,551	8,759	2,375	86	1,070
2013	572	869	692	2,896	1,769	1,477	8,600	2,405	79	990
2014	541	790	634	2,801	1,754	1,516	7,872	4,593	74	924
2015	419	596	476	2,508	1,431	1,684	5,290	2,312	56	706
5-yr AVG	556	911	716	2,869	1,743	1,476	8,008	2,599	80	1,041
SD	47	94	61	1,072	144	3,123	739	1,643	6	70









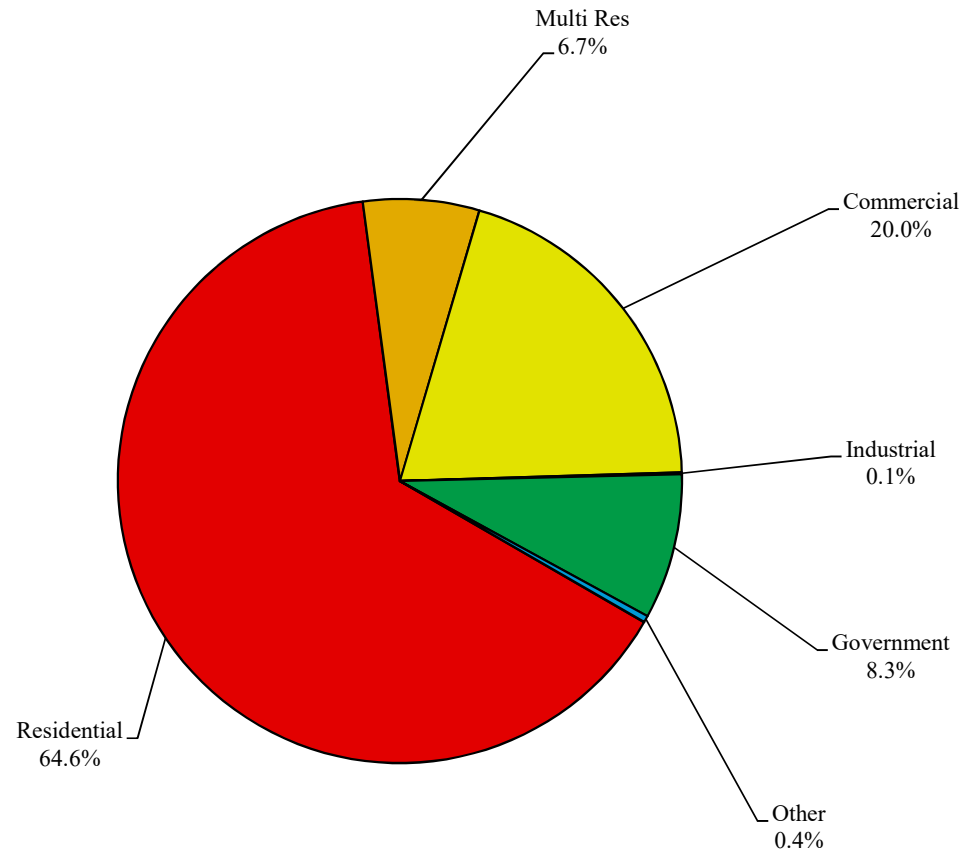
California Water Service Company - Bakersfield District
Water Supply and Demand Analysis and Projections
Percentage Change in Annual Demand

Worksheet 5

Year	Residential	Multi Res	Commercial	Industrial	Government	Other	Unaccounted	Total
1981	9.10%	6.34%	10.36%	-18.36%	3.91%	31.26%	5.54%	5.54%
1982	-4.06%	-2.63%	-4.84%	-11.92%	-7.04%	-62.79%	-5.19%	-5.19%
1983	4.13%	5.88%	5.50%	-10.48%	7.62%	145.40%	2.47%	2.47%
1984	20.10%	16.51%	10.44%	0.79%	19.33%	-8.02%	16.77%	16.77%
1985	-3.78%	12.09%	1.21%	2.22%	-1.10%	-35.16%	-2.14%	-2.14%
1986	2.58%	5.14%	3.35%	-4.65%	1.41%	69.56%	1.83%	1.83%
1987	-1.79%	1.93%	0.46%	-3.28%	2.29%	-67.06%	-2.02%	-2.02%
1988	5.89%	7.34%	-0.29%	-2.05%	1.86%	154.75%	2.06%	2.06%
1989	2.40%	2.47%	0.64%	-1.77%	6.14%	-21.21%	1.81%	1.81%
1990	2.72%	1.13%	0.71%	-11.30%	1.97%	47.96%	-0.54%	-0.54%
1991	-3.08%	-4.28%	-2.75%	-10.70%	-19.26%	58.78%	-4.81%	-4.81%
1992	12.64%	2.87%	1.18%	-7.87%	6.91%	-50.69%	12.46%	12.46%
1993	11.96%	-3.89%	-1.05%	-27.19%	3.35%	-31.37%	2.66%	2.66%
1994	11.19%	3.04%	4.46%	-21.72%	7.63%	26.74%	5.29%	5.29%
1995	7.86%	-3.60%	0.50%	6.17%	-11.95%	-12.85%	-3.69%	-3.69%
1996	15.21%	4.88%	10.09%	11.43%	17.05%	7.70%	5.90%	5.90%
1997	11.36%	0.00%	0.49%	-9.29%	0.41%	6.10%	0.35%	0.35%
1998	-7.18%	-0.67%	-6.66%	-4.37%	-13.64%	-11.78%	-14.47%	-14.47%
1999	22.18%	4.21%	7.68%	-8.80%	10.46%	23.71%	14.88%	14.88%
2000	13.02%	7.07%	5.17%	-57.80%	13.16%	37.84%	4.99%	4.99%
2001	4.91%	-5.80%	0.44%	-19.27%	-0.88%	8.25%	-1.54%	-1.54%
2002	11.47%	1.92%	3.68%	5.47%	7.91%	88.34%	4.46%	4.46%
2003	2.64%	8.57%	-3.82%	-14.19%	10.03%	-1.34%	2.58%	2.58%
2004	14.05%	27.82%	-7.78%	6.69%	7.90%	39.81%	-0.96%	-0.96%
2005	4.92%	-11.54%	-2.21%	40.10%	-0.14%	63.75%	-3.65%	-3.65%
2006	13.01%	-2.73%	3.67%	-6.26%	2.87%	16.42%	13.06%	13.06%
2007	9.83%	-3.60%	5.73%	17.93%	13.66%	-35.36%	-4.57%	-4.57%
2008	-0.98%	5.10%	2.31%	-22.55%	1.25%	-44.14%	-0.05%	-0.05%
2009	-0.76%	1.23%	-2.81%	-20.41%	-6.63%	-55.68%	-1.00%	-1.00%
2010	-2.45%	-5.32%	-6.95%	-14.80%	-1.64%	-14.16%	-5.30%	-5.30%
2011	8.03%	6.73%	0.68%	25.30%	2.85%	-27.14%	-2.74%	-2.74%
2012	16.24%	4.32%	3.13%	-0.87%	20.11%	40.88%	8.70%	8.70%
2013	5.89%	-1.15%	0.12%	-8.98%	-0.76%	7.13%	-6.82%	-6.82%
2014	0.48%	-3.62%	-0.63%	0.39%	-8.08%	147.27%	-5.95%	-5.95%
2015	-15.77%	-9.79%	-18.03%	12.64%	-31.27%	-44.81%	-23.04%	-23.04%

PAGE LEFT BLANK INTENTIONALLY

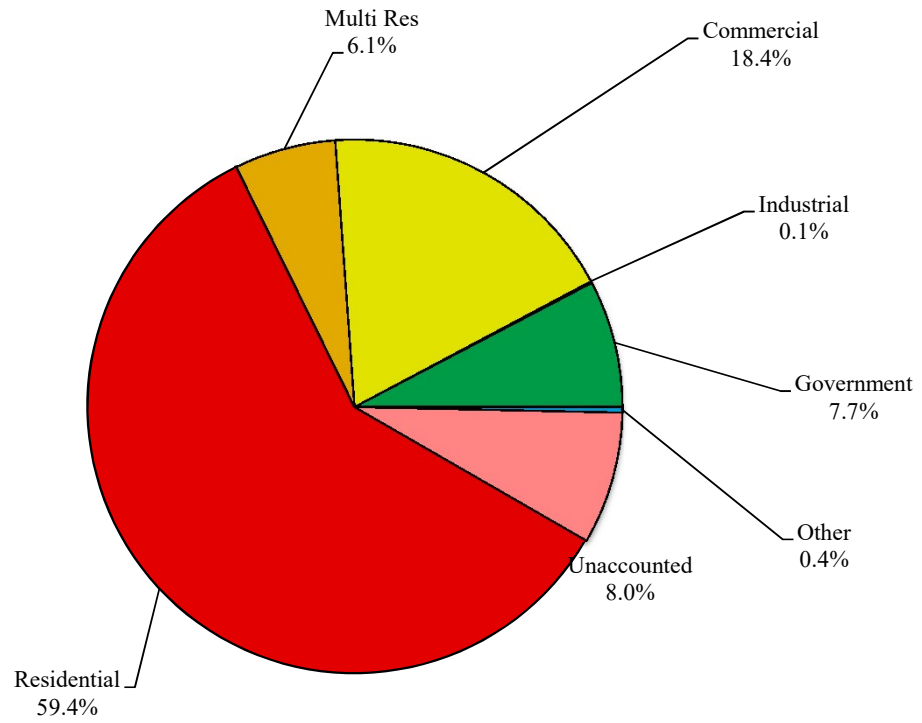
Percent of Total Sales by Type of Use (2015)



California Water Service Company - Bakersfield District
Water Supply and Demand Analysis and Projections
Percentage of Total Sales

Year	Residential	Multi Res	Commercial	Industrial	Government	Other	Percent Total
1980	71.26%	3.59%	17.74%	1.54%	5.55%	0.31%	8.70%
1981	70.78%	3.61%	18.55%	1.19%	5.47%	0.39%	8.70%
1982	71.04%	3.71%	18.62%	1.11%	5.36%	0.15%	8.70%
1983	70.03%	3.84%	19.17%	0.97%	5.63%	0.36%	8.70%
1984	71.16%	3.83%	18.13%	0.84%	5.75%	0.29%	8.70%
1985	69.99%	4.38%	18.75%	0.87%	5.81%	0.19%	8.70%
1986	69.52%	4.53%	19.03%	0.82%	5.79%	0.32%	8.70%
1987	68.82%	4.71%	19.52%	0.81%	6.04%	0.11%	8.70%
1988	68.91%	4.95%	19.07%	0.78%	6.03%	0.27%	8.70%
1989	68.92%	4.98%	18.85%	0.75%	6.29%	0.21%	8.70%
1990	68.43%	5.07%	19.09%	0.67%	6.45%	0.31%	8.70%
1991	68.80%	5.10%	19.50%	0.63%	5.47%	0.51%	8.70%
1992	71.86%	4.66%	17.54%	0.51%	5.20%	0.22%	8.70%
1993	72.98%	4.36%	16.91%	0.36%	5.23%	0.15%	8.70%
1994	73.15%	4.27%	16.78%	0.27%	5.35%	0.18%	8.70%
1995	72.87%	4.27%	17.51%	0.30%	4.89%	0.16%	8.70%
1996	71.68%	4.23%	18.20%	0.31%	5.41%	0.17%	8.70%
1997	71.69%	4.22%	18.22%	0.28%	5.41%	0.17%	8.70%
1998	69.25%	4.90%	19.89%	0.32%	5.46%	0.18%	8.70%
1999	71.22%	4.44%	18.64%	0.25%	5.25%	0.19%	8.70%
2000	70.78%	4.53%	18.68%	0.10%	5.66%	0.25%	8.70%
2001	70.55%	4.34%	19.05%	0.08%	5.70%	0.28%	8.70%
2002	70.39%	4.23%	18.91%	0.08%	5.89%	0.51%	8.70%
2003	70.92%	4.48%	17.73%	0.07%	6.31%	0.49%	8.70%
2004	70.08%	5.78%	16.51%	0.08%	6.88%	0.69%	8.70%
2005	69.54%	5.31%	16.75%	0.11%	7.13%	1.17%	8.70%
2006	72.30%	4.57%	15.36%	0.09%	6.49%	1.20%	8.70%
2007	69.72%	4.61%	17.02%	0.11%	7.73%	0.81%	8.70%
2008	69.36%	4.85%	17.42%	0.09%	7.83%	0.45%	8.70%
2009	70.28%	4.96%	17.10%	0.07%	7.38%	0.20%	8.70%
2010	70.32%	4.96%	16.81%	0.06%	7.67%	0.18%	8.70%
2011	68.84%	5.44%	17.40%	0.08%	8.11%	0.14%	8.70%
2012	69.06%	5.22%	16.50%	0.07%	8.96%	0.18%	8.70%
2013	66.91%	5.54%	17.73%	0.07%	9.54%	0.21%	8.70%
2014	65.64%	5.68%	18.74%	0.08%	9.32%	0.54%	8.70%
2015	64.56%	6.65%	19.96%	0.11%	8.33%	0.39%	8.70%

Percent of Total Demand by Type of Use (2015)

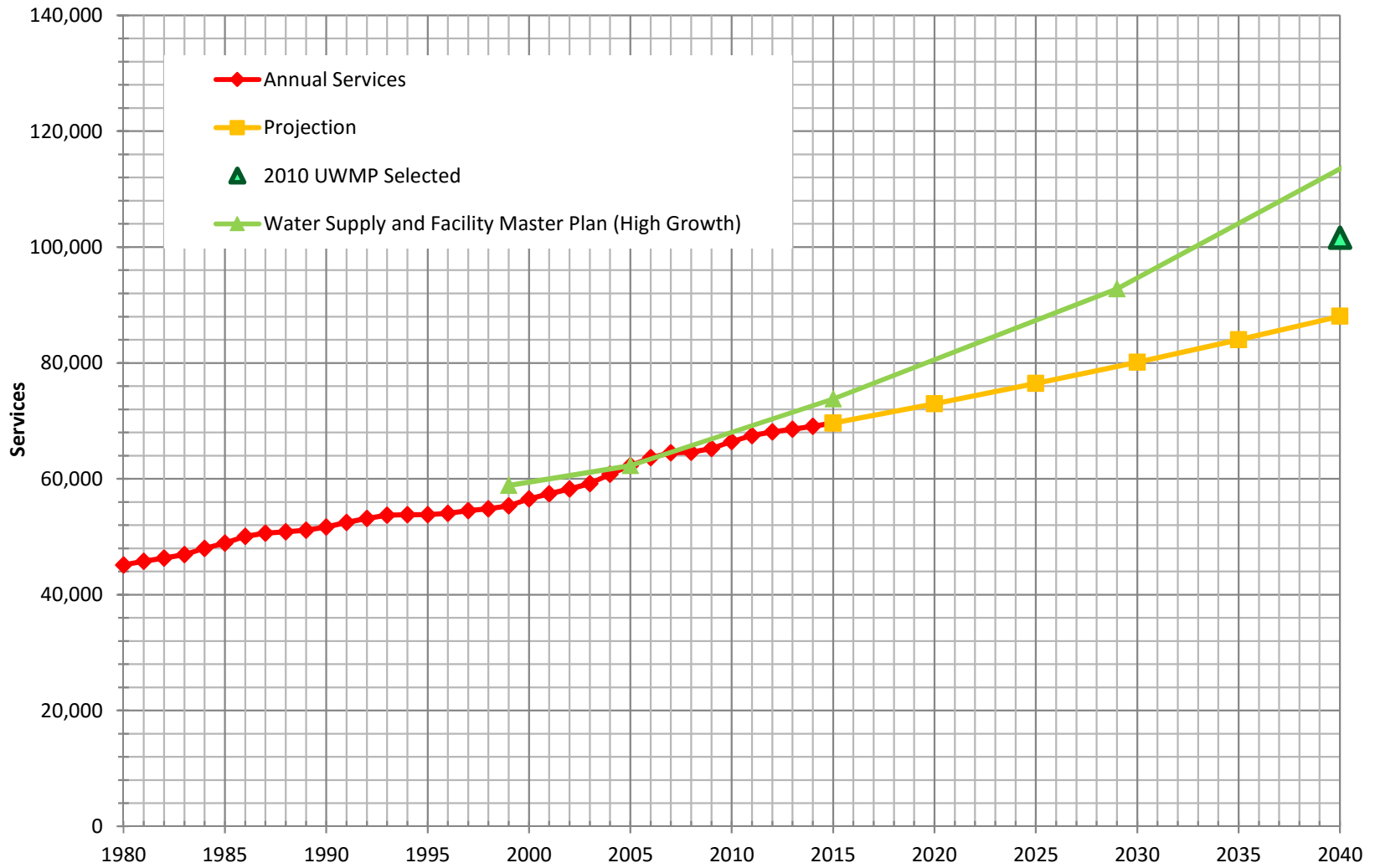


California Water Service Company - Bakersfield District
Water Supply and Demand Analysis and Projections
Percentage of Total Demand

Worksheet 7

Year	Residential	Multi Res	Commercial	Industrial	Government	Other	Unaccounted	Percent Total
1980	65.56%	3.30%	16.33%	1.42%	5.11%	0.29%	8.00%	100.00%
1981	65.12%	3.32%	17.07%	1.10%	5.03%	0.36%	8.00%	100.00%
1982	65.36%	3.41%	17.13%	1.02%	4.93%	0.14%	8.00%	100.00%
1983	64.43%	3.53%	17.64%	0.89%	5.18%	0.33%	8.00%	100.00%
1984	65.47%	3.52%	16.68%	0.77%	5.29%	0.26%	8.00%	100.00%
1985	64.39%	4.03%	17.25%	0.80%	5.35%	0.17%	8.00%	100.00%
1986	63.96%	4.16%	17.51%	0.75%	5.33%	0.29%	8.00%	100.00%
1987	63.31%	4.33%	17.96%	0.74%	5.56%	0.10%	8.00%	100.00%
1988	63.39%	4.56%	17.54%	0.71%	5.55%	0.24%	8.00%	100.00%
1989	63.41%	4.59%	17.34%	0.69%	5.79%	0.19%	8.00%	100.00%
1990	62.95%	4.66%	17.56%	0.61%	5.93%	0.28%	8.00%	100.00%
1991	63.30%	4.69%	17.94%	0.58%	5.03%	0.47%	8.00%	100.00%
1992	66.11%	4.29%	16.14%	0.47%	4.78%	0.21%	8.00%	100.00%
1993	67.14%	4.01%	15.56%	0.33%	4.82%	0.14%	8.00%	100.00%
1994	67.30%	3.93%	15.43%	0.25%	4.92%	0.17%	8.00%	100.00%
1995	67.04%	3.93%	16.11%	0.27%	4.50%	0.15%	8.00%	100.00%
1996	65.95%	3.89%	16.74%	0.29%	4.97%	0.15%	8.00%	100.00%
1997	65.95%	3.88%	16.77%	0.26%	4.98%	0.16%	8.00%	100.00%
1998	63.71%	4.51%	18.30%	0.29%	5.03%	0.17%	8.00%	100.00%
1999	65.52%	4.09%	17.15%	0.23%	4.83%	0.18%	8.00%	100.00%
2000	65.11%	4.17%	17.18%	0.09%	5.21%	0.23%	8.00%	100.00%
2001	64.91%	3.99%	17.53%	0.08%	5.24%	0.26%	8.00%	100.00%
2002	64.76%	3.89%	17.39%	0.08%	5.42%	0.46%	8.00%	100.00%
2003	65.25%	4.12%	16.31%	0.06%	5.81%	0.45%	8.00%	100.00%
2004	64.47%	5.32%	15.18%	0.07%	6.33%	0.63%	8.00%	100.00%
2005	63.97%	4.88%	15.41%	0.10%	6.56%	1.07%	8.00%	100.00%
2006	66.51%	4.20%	14.13%	0.08%	5.97%	1.10%	8.00%	100.00%
2007	64.14%	4.24%	15.66%	0.10%	7.11%	0.75%	8.00%	100.00%
2008	63.81%	4.46%	16.03%	0.08%	7.20%	0.42%	8.00%	100.00%
2009	64.66%	4.56%	15.73%	0.06%	6.79%	0.19%	8.00%	100.00%
2010	64.70%	4.56%	15.46%	0.06%	7.05%	0.17%	8.00%	100.00%
2011	63.33%	5.01%	16.01%	0.07%	7.46%	0.13%	8.00%	100.00%
2012	63.54%	4.80%	15.18%	0.07%	8.24%	0.16%	8.00%	100.00%
2013	61.56%	5.10%	16.31%	0.07%	8.78%	0.19%	8.00%	100.00%
2014	60.39%	5.22%	17.24%	0.07%	8.58%	0.50%	8.00%	100.00%
2015	59.40%	6.12%	18.36%	0.10%	7.66%	0.36%	8.00%	100.00%

Historical & Projected Services



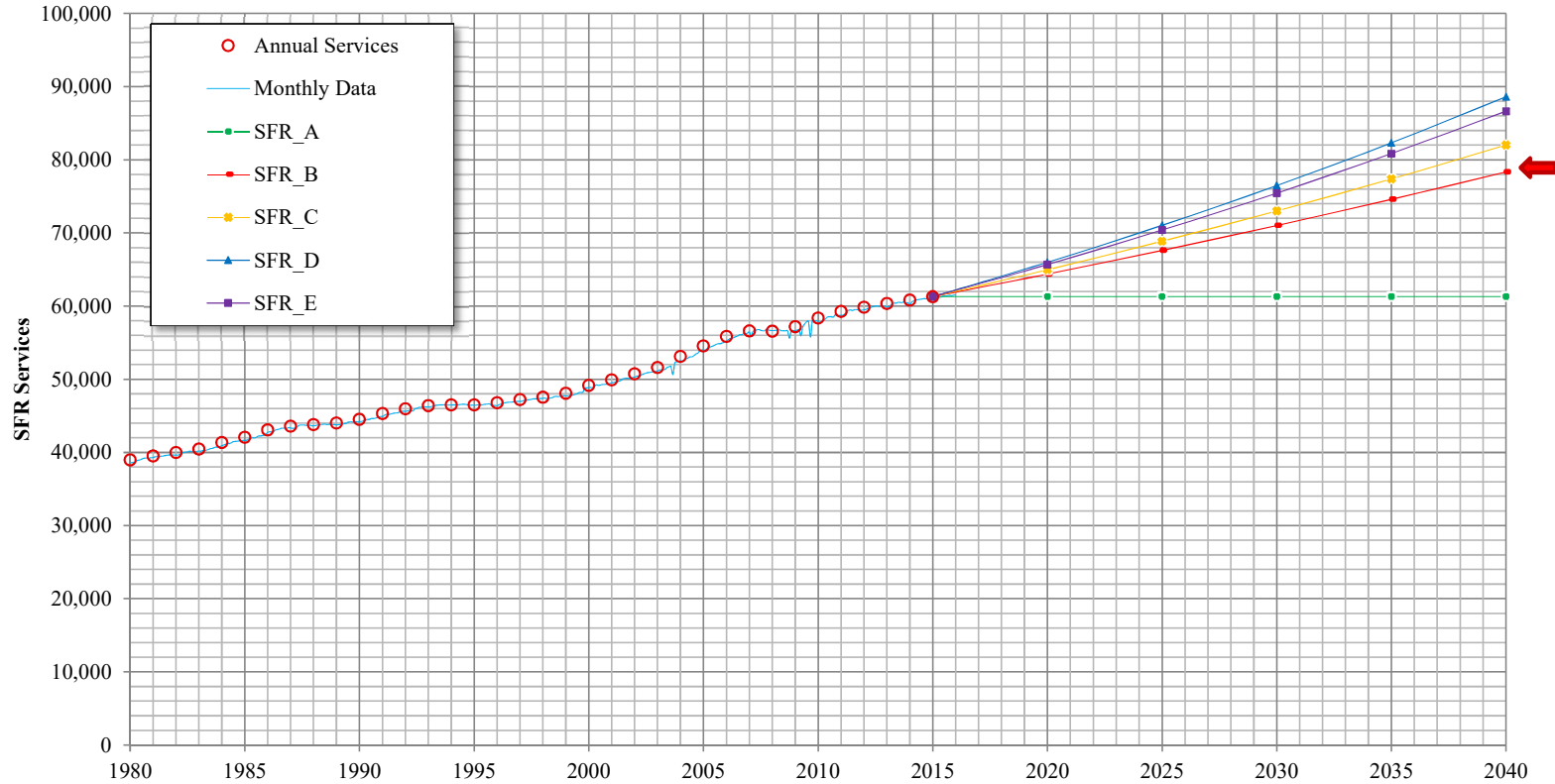
California Water Service Company - Bakersfield District
Water Supply and Demand Analysis and Projections

Customer Category	Selected Trend		Growth Rate	Actual Services				Projected Services					
				2000	2005	2010	Base Year 2015	2015	2020	2025	2030	2035	2040
SFR	SFR_B	5 Yr. Avg.	0.99%	49,160	54,563	58,357	61,294	61,294	64,376	67,613	71,013	74,583	78,334
MFR	MFR_E	20 Yr. Avg.	1.12%	448	960	1,089	1,199	1,199	1,267	1,340	1,416	1,497	1,583
COM	COM_C	10 Yr. Avg.	0.42%	6,443	6,047	6,229	6,305	6,305	6,439	6,575	6,715	6,858	7,003
IND	IND_A	Zero Growth Rate	0.00%	40	36	32	30	30	30	30	30	30	30
GOV	GOV_B	5 Yr. Avg.	1.48%	378	573	661	712	712	766	824	887	955	1,027
OTH	OTH_A	Zero Growth Rate	0.00%	56	93	56	76	76	76	76	76	76	76
TOTAL	Average growth rate 2012-2040		0.94%	56,525	62,271	66,424	69,616	69,616	72,954	76,459	80,137	83,999	88,053

California Water Service Company - Bakersfield District

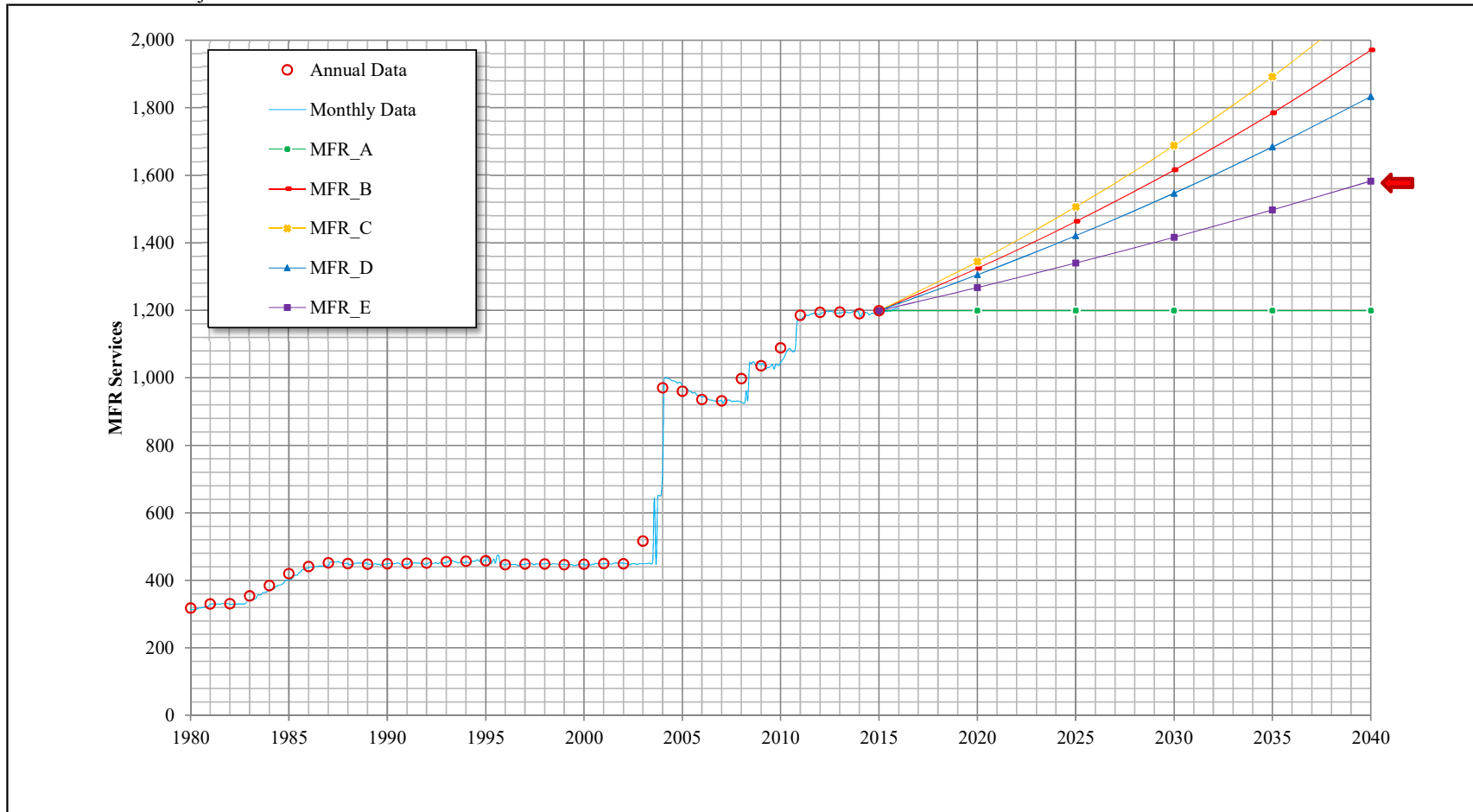
Water Supply and Demand Analysis and Projections

SFR Historical & Projected Services



Customer Category	Trend	Growth Rate	Actual				Projected					
						Base Year	Services	Services	Services	Services	Services	Services
			2000	2005	2010	2015	2015	2020	2025	2030	2035	2040
SFR			49,160	54,563	58,357	61,294	61,294	61,294	61,294	61,294	61,294	61,294
	>	SFR_A	Zero Growth Rate	0.00%		61,294	61,294	61,294	61,294	61,294	61,294	61,294
		SFR_B	5 Yr. Avg.	0.99%		61,294	61,294	64,376	67,613	71,013	74,583	78,334
		SFR_C	10 Yr. Avg.	1.17%		61,294	61,294	64,971	68,869	73,000	77,379	82,021
		SFR_D	15 Yr. Avg.	1.49%		61,294	61,294	65,984	71,032	76,466	82,316	88,614
		SFR_E	20 Yr. Avg.	1.39%		61,294	61,294	65,687	70,395	75,440	80,847	86,641

California Water Service Company - Bakersfield District Water Supply and Demand Analysis and Projections MFR Historical & Projected Services

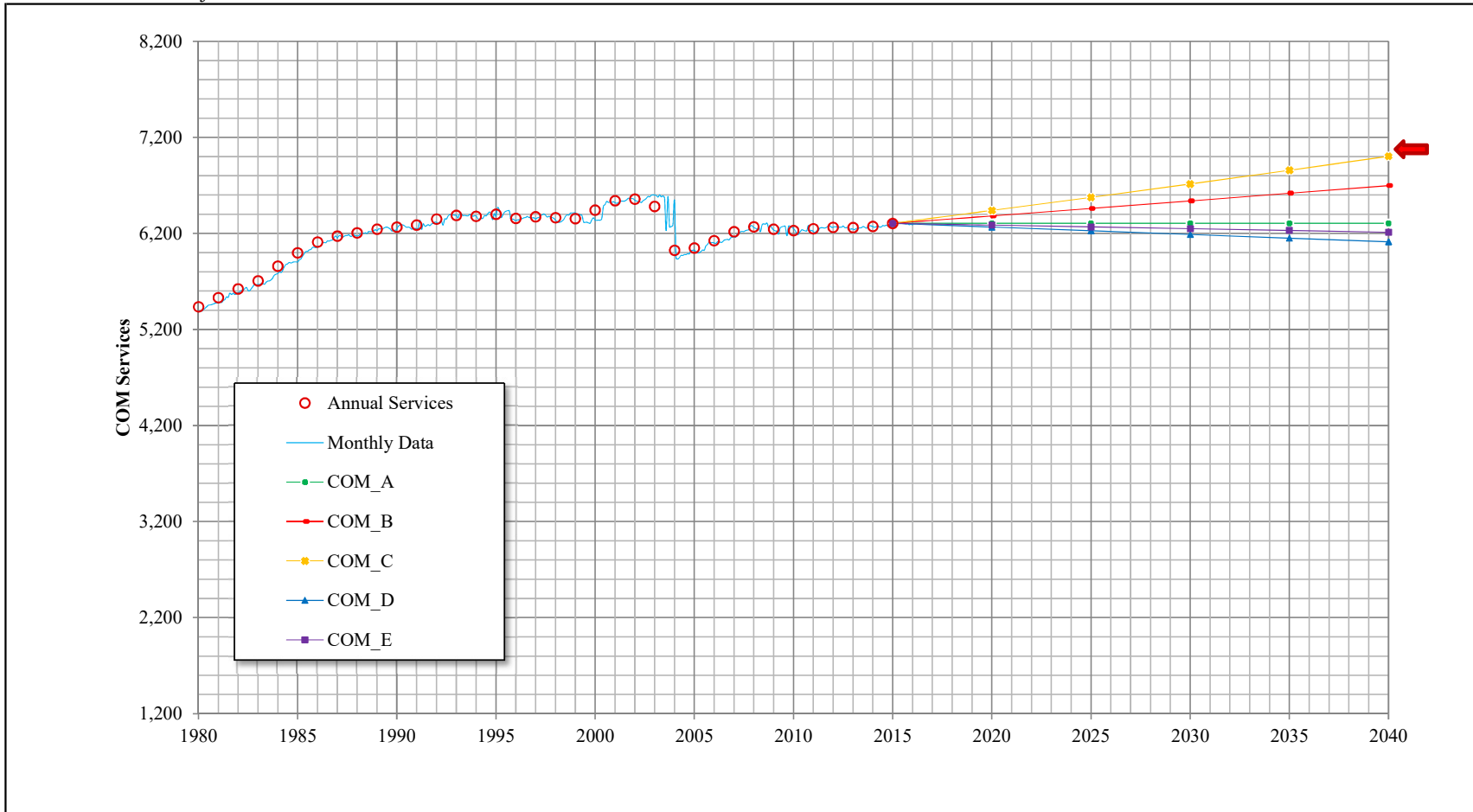


Customer Category	Trend	Growth Rate	Actual				Projected					
			2000	2005	2010	Base Year 2015	Services 2015	Services 2020	Services 2025	Services 2030	Services 2035	Services 2040
MFR	MFR_A	Zero Growth Rate	448	960	1,089	1,199	1,199	1,199	1,199	1,199	1,199	1,199
	MFR_B	5 Yr. Avg.				1,199	1,199	1,324	1,463	1,615	1,784	1,971
	MFR_C	10 Yr. Avg.				1,199	1,199	1,344	1,506	1,688	1,892	2,120
	MFR_D	15 Yr. Avg.				1,199	1,199	1,305	1,421	1,547	1,684	1,833
	> MFR_E	20 Yr. Avg.				1,199	1,199	1,267	1,340	1,416	1,497	1,583

California Water Service Company - Bakersfield District

Water Supply and Demand Analysis and Projections

COM Historical & Projected Services

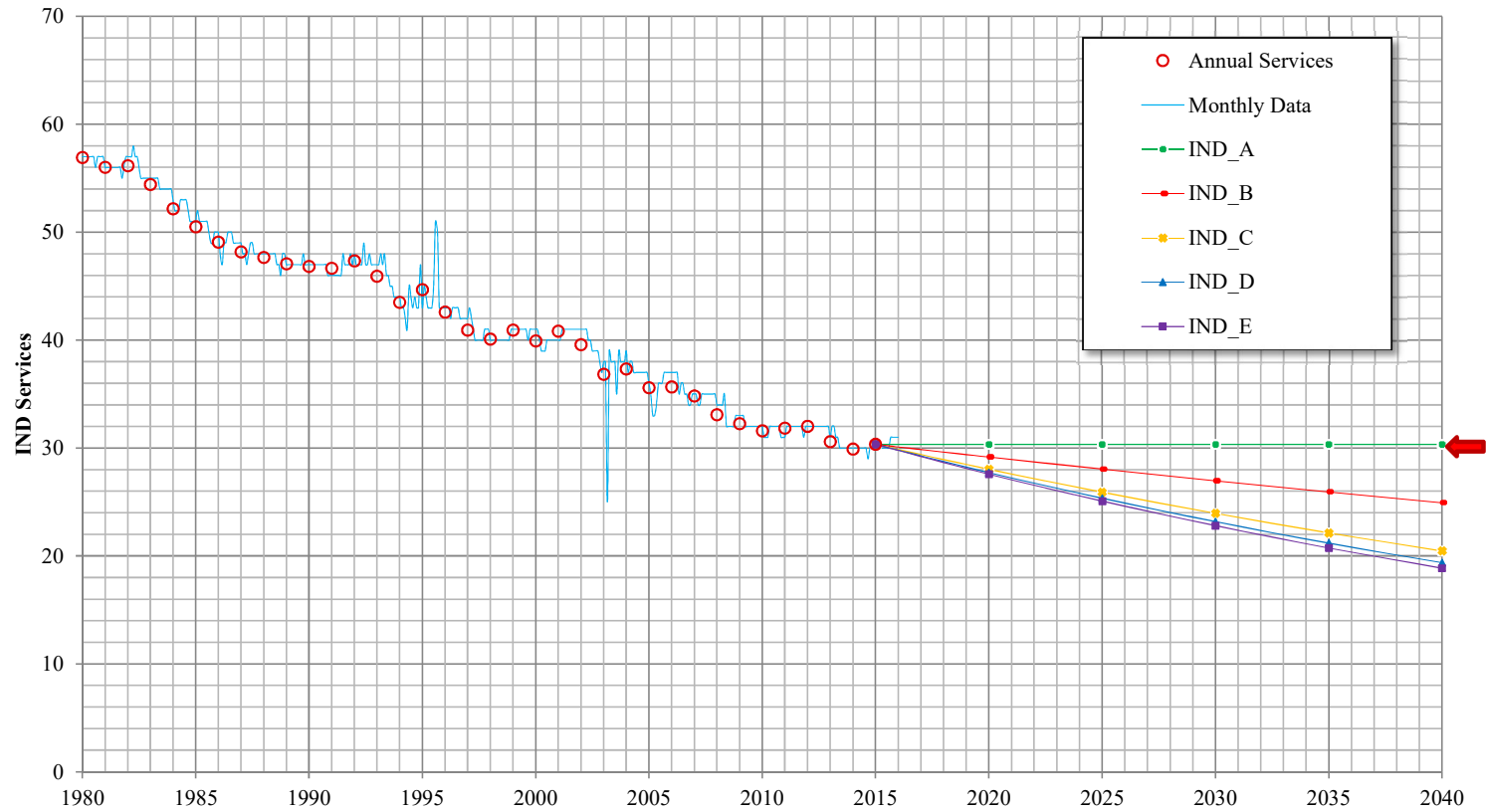


Customer Category	Trend	Growth Rate	Actual				Projected					
			2000	2005	2010	Base Year 2015	Services 2015	Services 2020	Services 2025	Services 2030	Services 2035	Services 2040
COM	COM_A	Zero Growth Rate	6,443	6,047	6,229	6,305	6,305	6,305	6,305	6,305	6,305	6,305
	COM_B	5 Yr. Avg.				6,305	6,305	6,382	6,459	6,538	6,617	6,698
	> COM_C	10 Yr. Avg.				6,305	6,305	6,439	6,575	6,715	6,858	7,003
	COM_D	15 Yr. Avg.				6,305	6,305	6,266	6,227	6,189	6,150	6,112
	COM_E	20 Yr. Avg.				6,305	6,305	6,286	6,268	6,249	6,231	6,213

California Water Service Company - Bakersfield District

Water Supply and Demand Analysis and Projections

IND Historical & Projected Services

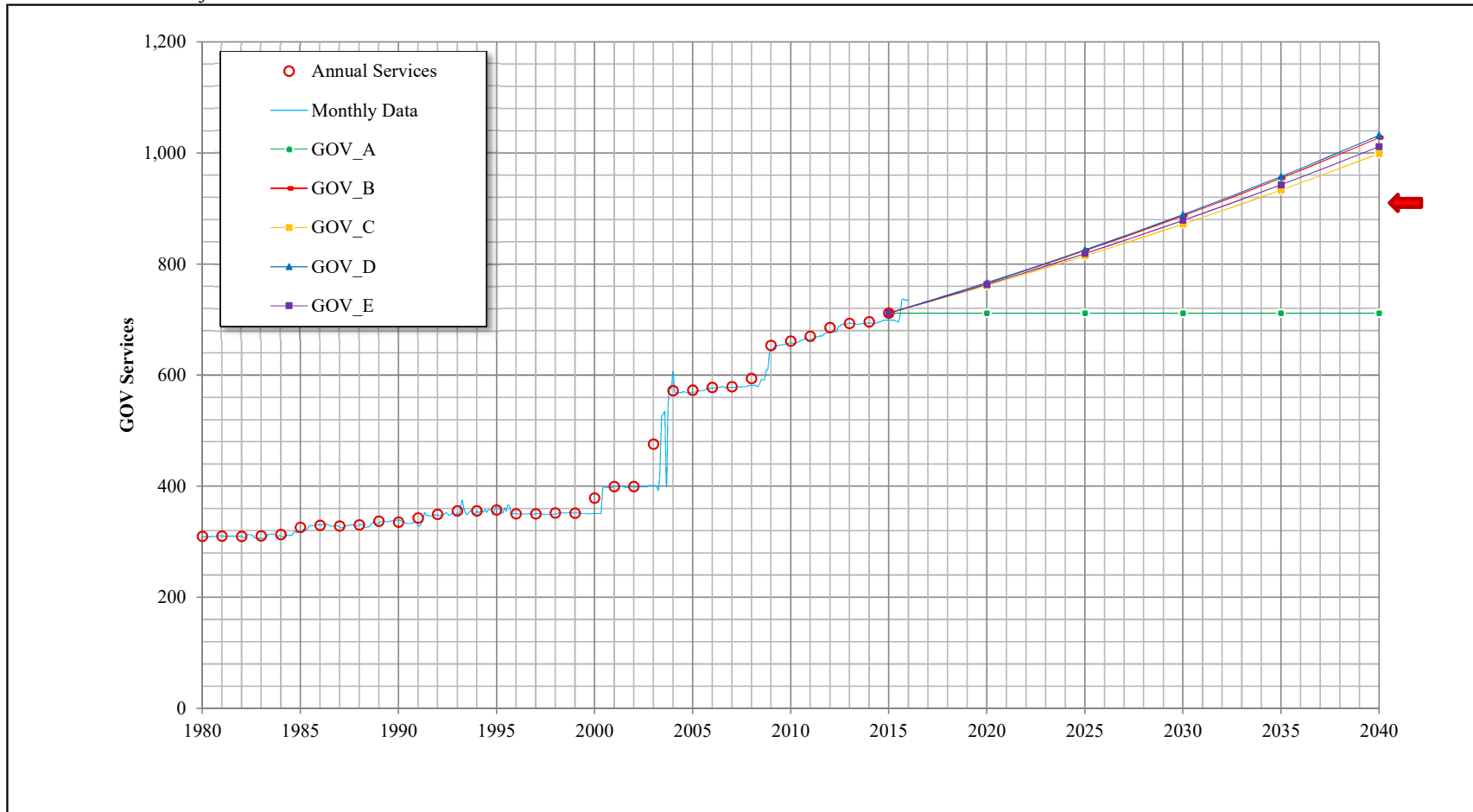


Customer Category	Trend	Growth Rate	Actual				Projected					
			2000	2005	2010	Base Year 2015	Services 2015	Services 2020	Services 2025	Services 2030	Services 2035	Services 2040
IND	> IND_A	Zero Growth Rate	40	36	32	30	30	30	30	30	30	30
	IND_B	5 Yr. Avg.				30	30	29	28	27	26	25
	IND_C	10 Yr. Avg.				30	30	28	26	24	22	20
	IND_D	15 Yr. Avg.				30	30	28	25	23	21	19
	IND_E	20 Yr. Avg.				30	30	28	25	23	21	19

California Water Service Company - Bakersfield District

Water Supply and Demand Analysis and Projections

GOV Historical & Projected Services

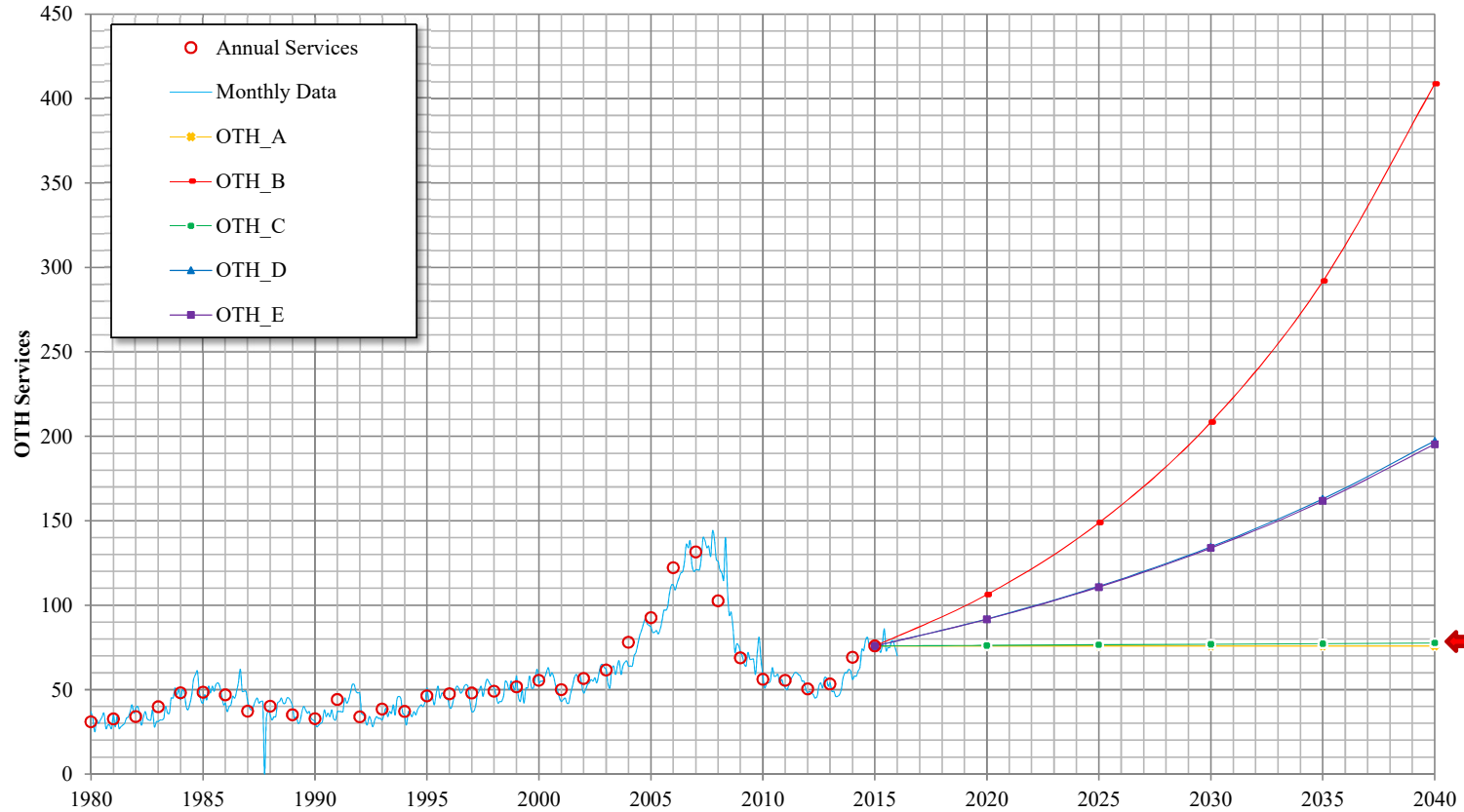


Customer Category	Trend	Growth Rate	Actual				Projected					
			2000	2005	2010	Base Year 2015	Services 2015	Services 2020	Services 2025	Services 2030	Services 2035	Services 2040
GOV			378	573	661	712	712	712	712	712	712	712
	>	GOV_A Zero Growth Rate				712	712	712	712	712	712	712
		GOV_B 5 Yr. Avg.				712	712	766	824	887	955	1,027
		GOV_C 10 Yr. Avg.				712	712	761	815	872	933	999
		GOV_D 15 Yr. Avg.				712	712	766	825	889	958	1,032
		GOV_E 20 Yr. Avg.				712	712	763	819	879	943	1,011

California Water Service Company - Bakersfield District

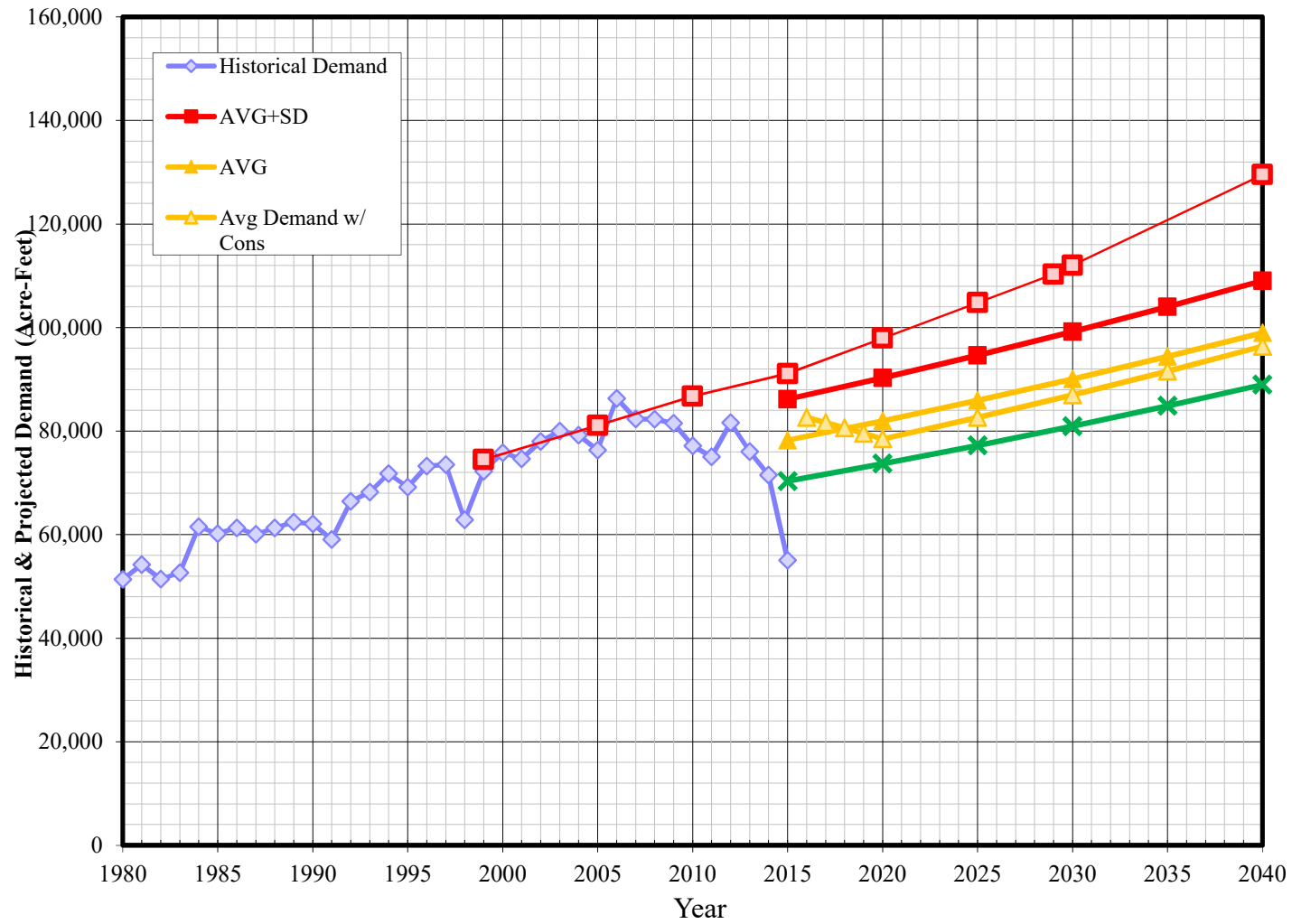
Water Supply and Demand Analysis and Projections

OTH Historical & Projected Services



Customer Category	Trend		Growth Rate	Actual				Projected							
				2000	2005	2010	Base Year 2015	Services	Services	Services	Services	Services	Services		
								2015	2020	2025	2030	2035	2040		
OTH	>	OTH_A	Zero Growth Rate	56	93	56	76	76	76	76	76	76	76	76	76
		OTH_B	5 Yr. Avg.				76	76	106	149	208	292	409		
		OTH_C	10 Yr. Avg.				76	76	76	77	77	77	78		
		OTH_D	15 Yr. Avg.				76	76	92	111	135	163	197		
		OTH_E	20 Yr. Avg.				76	76	92	111	134	162	195		

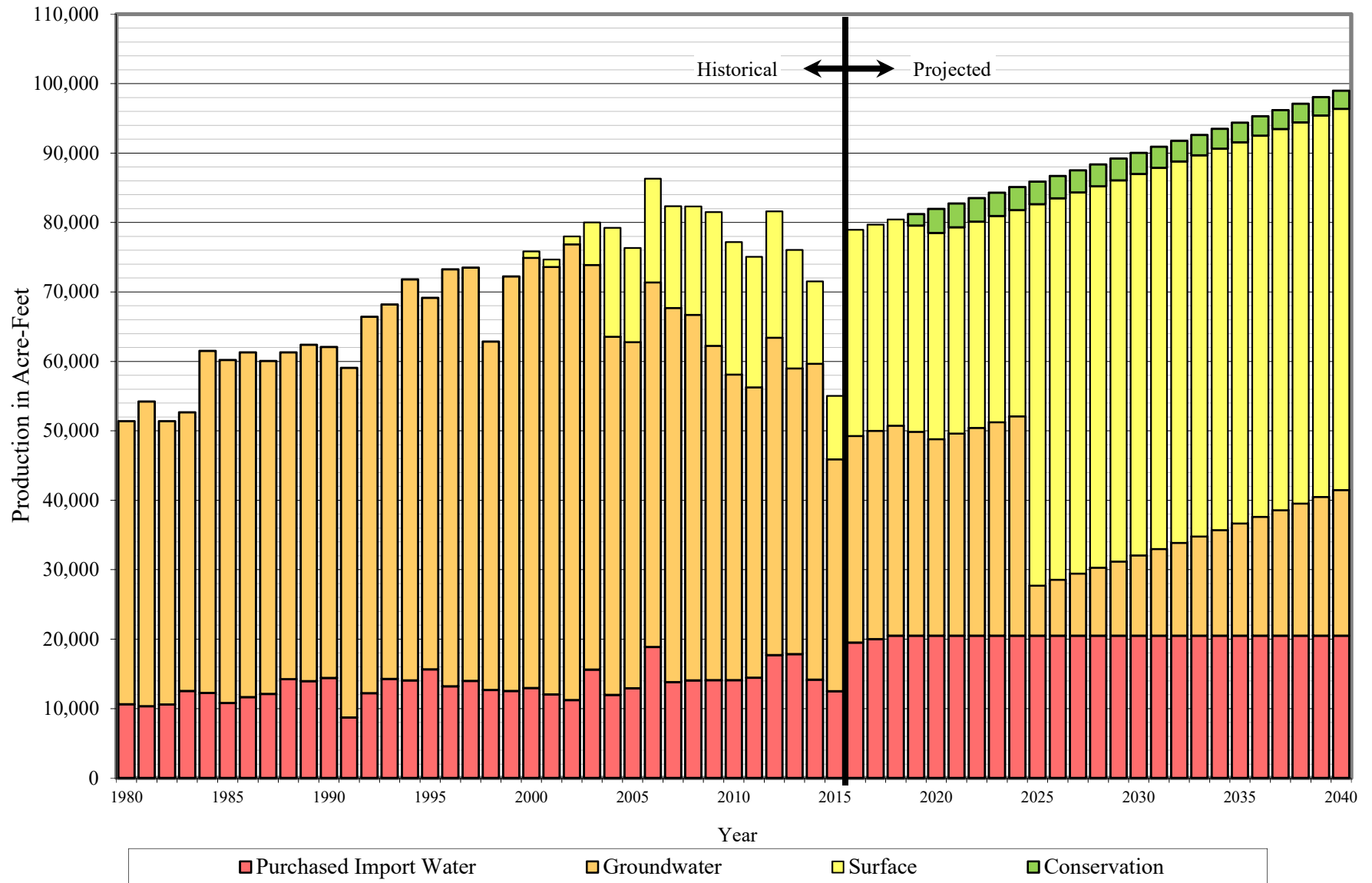
Historical & Projected Demand (BK)



California Water Service Company - Bakersfield District
Water Supply and Demand Analysis and Projections

Customer Category	Actual Demand (AFY)														
	1980	1985	1990	1995	2000	2005	2010	2015	2015	2020	2025	2030	2035	2040	
SFR	33,679	38,756	39,066	46,366	49,370	48,837	49,932	32,688	53,363	56,046	58,864	61,824	64,933	68,198	
									49,153	51,624	54,220	56,946	59,809	62,817	
									44,942	47,202	49,575	52,068	54,686	57,436	
MFR	1,695	2,427	2,893	2,720	3,162	3,726	3,520	3,368	5,292	5,595	5,914	6,252	6,610	6,988	
									3,853	4,073	4,306	4,552	4,812	5,087	
									2,414	2,552	2,698	2,852	3,015	3,187	
COM	8,386	10,385	10,897	11,139	13,027	11,765	11,932	10,104	13,329	13,612	13,901	14,196	14,497	14,805	
									12,311	12,572	12,839	13,112	13,390	13,674	
									11,293	11,533	11,778	12,028	12,283	12,544	
IND	730	484	381	190	71	77	45	57	156	156	156	156	156	156	
									50	50	50	50	50	50	
									0	0	0	0	0	0	
GOV	2,624	3,219	3,682	3,113	3,949	5,007	5,444	4,216	6,971	7,502	8,074	8,690	9,352	10,065	
									6,382	6,869	7,392	7,956	8,562	9,215	
									5,794	6,235	6,711	7,222	7,773	8,365	
OTH	147	105	174	103	178	818	131	196	360	360	360	360	360	360	
									221	221	221	221	221	221	
									81	81	81	81	81	81	
UAWF	4,110	4,815	4,965	5,533	6,066	6,107	6,174	4,403	6,693	7,014	7,350	7,704	8,075	8,465	
									6,257	6,557	6,872	7,202	7,549	7,914	
									5,821	6,100	6,393	6,700	7,023	7,362	
TOTAL (AFY)	51,371	60,192	62,057	69,164	75,822	76,338	77,178	55,033	86,165	90,286	94,621	99,183	103,984	109,037	
									78,227	81,966	85,900	90,039	94,395	98,978	
									70,345	73,703	77,235	80,951	84,861	88,975	
TOTAL (MGD)	45.861	53.736	55.401	61.746	67.689	68.150	68.900	49.130	76.923	80.602	84.472	88.545	92.831	97.342	
									69.836	73.175	76.687	80.382	84.270	88.362	
									62.800	65.798	68.951	72.269	75.759	79.432	

Historical and Projected Distribution of Demand by Source



California Water Service Company - Bakersfield District
Water Supply and Demand Analysis and Projections
Historical and Projected Distribution of Demand by Source

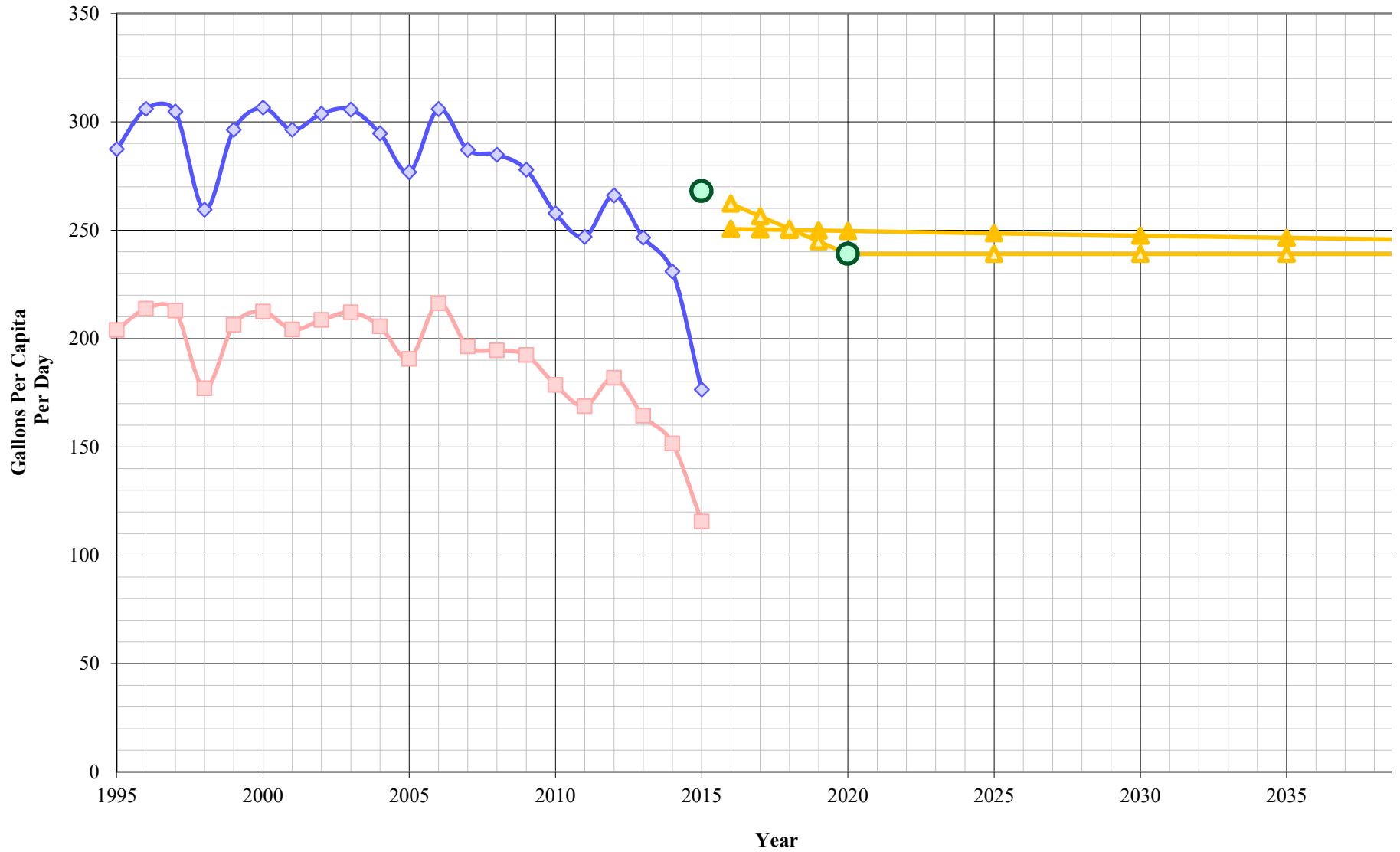
Year	Purchased Water		Groundwater				Conservation				Total					
	MGD	AFY	MGD	AFY	NEBWTP		North Garden WTP		SBWTP		Subtotal		MGD	AFY	MGD	AFY
					MGD	AFY	MGD	AFY	MGD	AFY	MGD	AFY				
1980	9.47	10,609	36.39	40,762	0.00	0	0.00	0	0.00	0	0.00	0			45.86	51,371
1981	9.24	10,353	39.16	43,865	0.00	0	0.00	0	0.00	0	0.00	0			48.40	54,218
1982	9.47	10,603	36.42	40,800	0.00	0	0.00	0	0.00	0	0.00	0			45.89	51,403
1983	11.20	12,550	35.82	40,124	0.00	0	0.00	0	0.00	0	0.00	0			47.02	52,674
1984	10.93	12,244	43.98	49,265	0.00	0	0.00	0	0.00	0	0.00	0			54.91	61,509
1985	9.63	10,782	44.11	49,410	0.00	0	0.00	0	0.00	0	0.00	0			53.74	60,192
1986	10.40	11,650	44.32	49,643	0.00	0	0.00	0	0.00	0	0.00	0			54.72	61,292
1987	10.80	12,101	42.81	47,950	0.00	0	0.00	0	0.00	0	0.00	0			53.61	60,052
1988	12.72	14,243	42.00	47,044	0.00	0	0.00	0	0.00	0	0.00	0			54.71	61,287
1989	12.45	13,947	43.25	48,449	0.00	0	0.00	0	0.00	0	0.00	0			55.70	62,396
1990	12.87	14,421	42.53	47,637	0.00	0	0.00	0	0.00	0	0.00	0			55.40	62,057
1991	7.78	8,714	44.96	50,361	0.00	0	0.00	0	0.00	0	0.00	0			52.74	59,075
1992	10.91	12,220	48.40	54,216	0.00	0	0.00	0	0.00	0	0.00	0			59.31	66,436
1993	12.75	14,277	48.15	53,929	0.00	0	0.00	0	0.00	0	0.00	0			60.89	68,206
1994	12.53	14,038	51.58	57,779	0.00	0	0.00	0	0.00	0	0.00	0			64.11	71,817
1995	13.96	15,640	47.78	53,524	0.00	0	0.00	0	0.00	0	0.00	0			61.75	69,164
1996	11.79	13,202	53.60	60,044	0.00	0	0.00	0	0.00	0	0.00	0			65.39	73,246
1997	12.49	13,994	53.12	59,507	0.00	0	0.00	0	0.00	0	0.00	0			65.62	73,501
1998	11.31	12,670	44.81	50,194	0.00	0	0.00	0	0.00	0	0.00	0			56.12	62,863
1999	11.17	12,516	53.30	59,704	0.00	0	0.00	0	0.00	0	0.00	0			64.47	72,220
2000	11.56	12,945	55.32	61,961	0.82	915	0.00	0	0.00	0	0.82	915			67.69	75,822
2001	10.76	12,053	54.96	61,566	0.93	1,036	0.00	0	0.00	0	0.93	1,036			66.65	74,655
2002	10.02	11,226	58.60	65,645	0.99	1,114	0.00	0	0.00	0	0.99	1,114			69.62	77,986
2003	13.93	15,606	52.03	58,278	5.45	6,109	0.00	0	0.00	0	5.45	6,109			71.41	79,994
2004	10.70	11,982	46.05	51,586	13.98	15,660	0.00	0	0.00	0	13.98	15,660			70.73	79,229
2005	11.52	12,908	44.51	49,856	12.12	13,574	0.00	0	0.00	0	12.12	13,574			68.15	76,338
2006	16.85	18,879	46.87	52,499	13.32	14,926	0.00	0	0.00	0	13.32	14,926			77.05	86,304
2007	12.33	13,814	48.11	53,889	12.17	13,634	0.92	1,026	0.00	0	13.09	14,660			73.53	82,362
2008	12.55	14,058	47.01	52,661	12.74	14,265	1.19	1,334	0.00	0	13.93	15,599			73.49	82,317
2009	12.58	14,090	42.99	48,154	12.83	14,374	4.36	4,879	0.00	0	17.19	19,253			72.76	81,497
2010	12.59	14,103	39.28	43,995	13.32	14,922	3.71	4,157	0.00	0	17.03	19,079			68.90	77,178
2011	12.89	14,436	37.35	41,835	12.87	14,415	3.91	4,377	0.00	0	16.78	18,793			67.01	75,063
2012	15.81	17,712	40.81	45,709	11.67	13,067	4.56	5,109	0.00	0	16.23	18,176			72.85	81,597
2013	15.92	17,829	36.74	41,157	12.00	13,443	3.22	3,603	0.00	0	15.22	17,046			67.88	76,033
2014	12.66	14,178	40.62	45,495	8.07	9,043	2.49	2,791	0.00	0	10.56	11,834			63.84	71,507
2015	11.16	12,496	29.81	33,388	7.17	8,027	1.00	1,122	0.00	0	8.17	9,149			49.13	55,033
2016	17.41	19,500	26.58	29,776	15.00	16,802	4.00	4,481	7.50	8,401	26.50	29,684	0.00	0	70.49	78,960
2017	17.85	20,000	26.80	30,016	15.00	16,802	4.00	4,481	7.50	8,401	26.50	29,684	0.00	0	71.15	79,700
2018	18.30	20,500	27.02	30,264	15.00	16,802	4.00	4,481	7.50	8,401	26.50	29,684	0.00	0	71.82	80,448
2019	18.30	20,500	27.69	29,381	15.00	16,802	4.00	4,481	7.50	8,401	26.50	29,684	1.46	1,639	72.49	81,203
2020	18.30	20,500	28.37	28,297	15.00	16,802	4.00	4,481	7.50	8,401	26.50	29,684	3.11	3,485	73.17	81,966
2025	18.30	20,500	9.39	7,227	30.00	33,604	4.00	4,481	15.00	16,802	49.00	54,887	2.93	3,286	76.69	85,900
2030	18.30	20,500	13.08	11,579	30.00	33,604	4.00	4,481	15.00	16,802	49.00	54,887	2.74	3,074	80.38	90,039
2035	18.30	20,500	16.97	16,160	30.00	33,604	4.00	4,481	15.00	16,802	49.00	54,887	2.54	2,847	84.27	94,395
2040	18.30	20,500	21.06	20,984	30.00	33,604	4.00	4,481	15.00	16,802	49.00	54,887	2.33	2,607	88.36	98,978

NEBWTP = North East Bakersfield Water Treatment Plant

SBTP = South Bakersfield Water Treatment Plant, expected to be operational by September 2013. The plant will be owned by Cal Water, but its output will be shared 50/50 with the City. Each entity will have rights to an ultimate capacity of 10 mgd (11.5 mgd peak capacity) in Phase 1 (20 mgd total) and 20 mgd (23 mgd peak capacity) in Phase 2 (total plant capacity is 40 mgd). Plant assumed to be operating 75% of the year.

RRSSWTP = Rosedale Ranch and Seventh Standard Corridor WTP conceptual design planned for 2045 (7 mgd [7*365*0.75 = 1916 MGY, 5881 AFY])

Per Capita Consumption (BK)



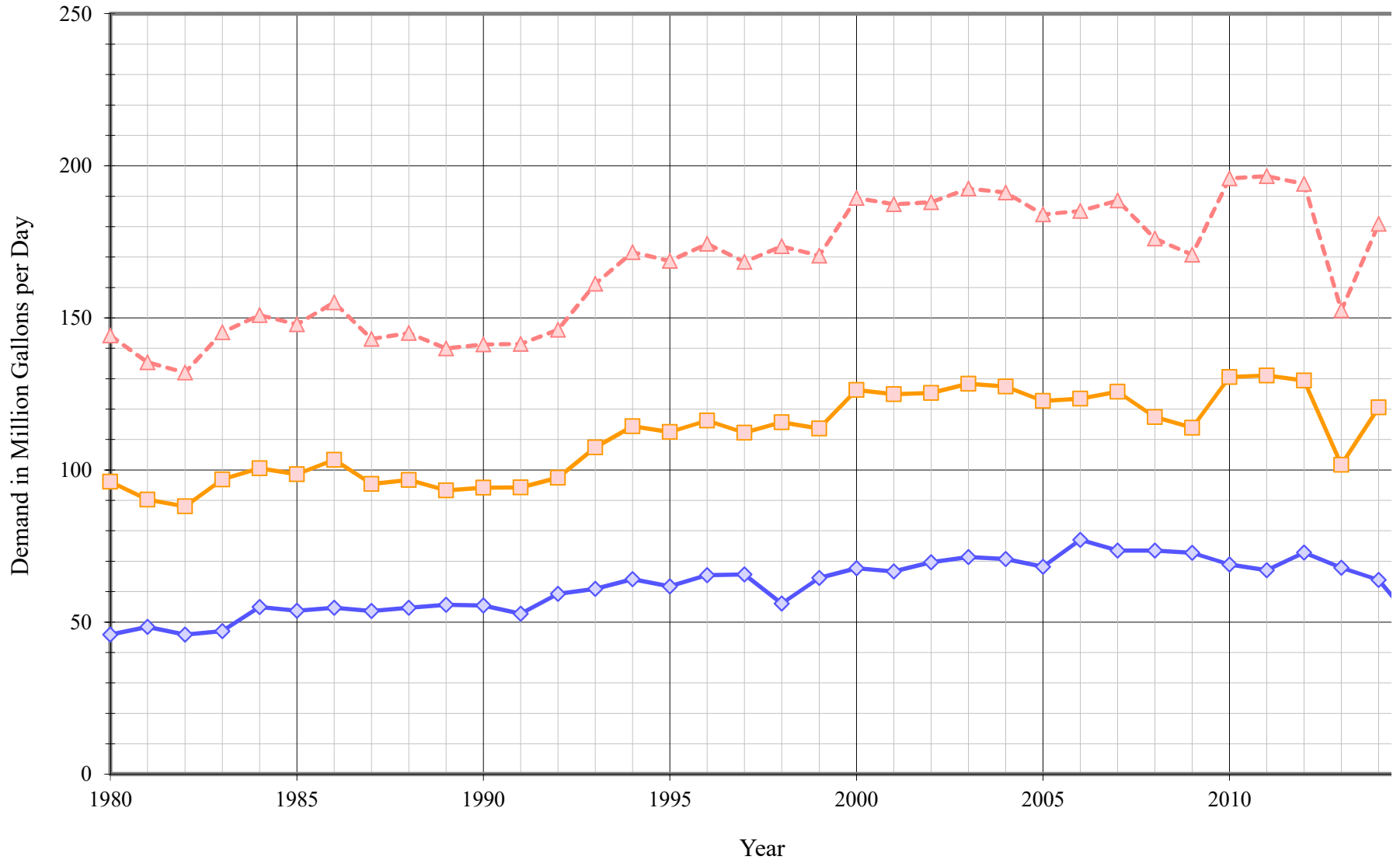
California Water Service Company - Bakersfield District
Water Supply and Demand Analysis and Projections
Per Capita Water Demand Calculation

Worksheet 15

Year	POP	Historical				Projected			
		Gross Demand		Residential Only		Avg Demand		Avg Demand w/ Cons	
		Usage (AFY)	Per Capita (GPCPD)	Usage (AFY)	Per Capita (GPCPD)	Demand (AFY)	Per Capita (GPCPD)	Demand (AFY)	Per Capita (GPCPD)
1995	214,863	69,164	287	49,086	204				
1996	213,683	73,246	306	51,157	214				
1997	215,318	73,501	305	51,330	213				
1998	216,301	62,863	259	42,885	177				
1999	217,530	72,220	296	50,271	206				
2000	220,851	75,822	306	52,532	212				
2001	224,924	74,655	296	51,435	204				
2002	229,212	77,986	304	53,536	209				
2003	233,630	79,994	306	55,492	212				
2004	240,029	79,229	295	55,291	206				
2005	246,177	76,338	277	52,563	191				
2006	251,898	86,304	306	61,027	216				
2007	256,127	82,362	287	56,322	196				
2008	257,982	82,317	285	56,200	194				
2009	261,817	81,497	278	56,414	192				
2010	267,255	77,178	258	53,452	179				
2011	271,344	75,063	247	51,294	169				
2012	273,798	81,597	266	55,765	182				
2013	275,282	76,033	247	50,677	164				
2014	276,364	71,507	231	46,919	152				
2015	278,488	55,033	176	36,056	116				
2016	281,361					78,960	251	82,636	262
2017	284,263					79,700	250	81,642	256
2018	287,196					80,448	250	80,618	251
2019	290,158					81,203	250	79,565	245
2020	293,152					81,966	250	78,481	239
2025	308,590					85,900	249	82,614	239
2030	324,845					90,039	247	86,966	239
2035	341,959					94,395	246	91,547	239
2040	359,979					98,978	245	96,371	239

<i>SBx7-7 Targets</i>	
2015	268
2020	239

Average Day, Maximum Day, Peak Demand

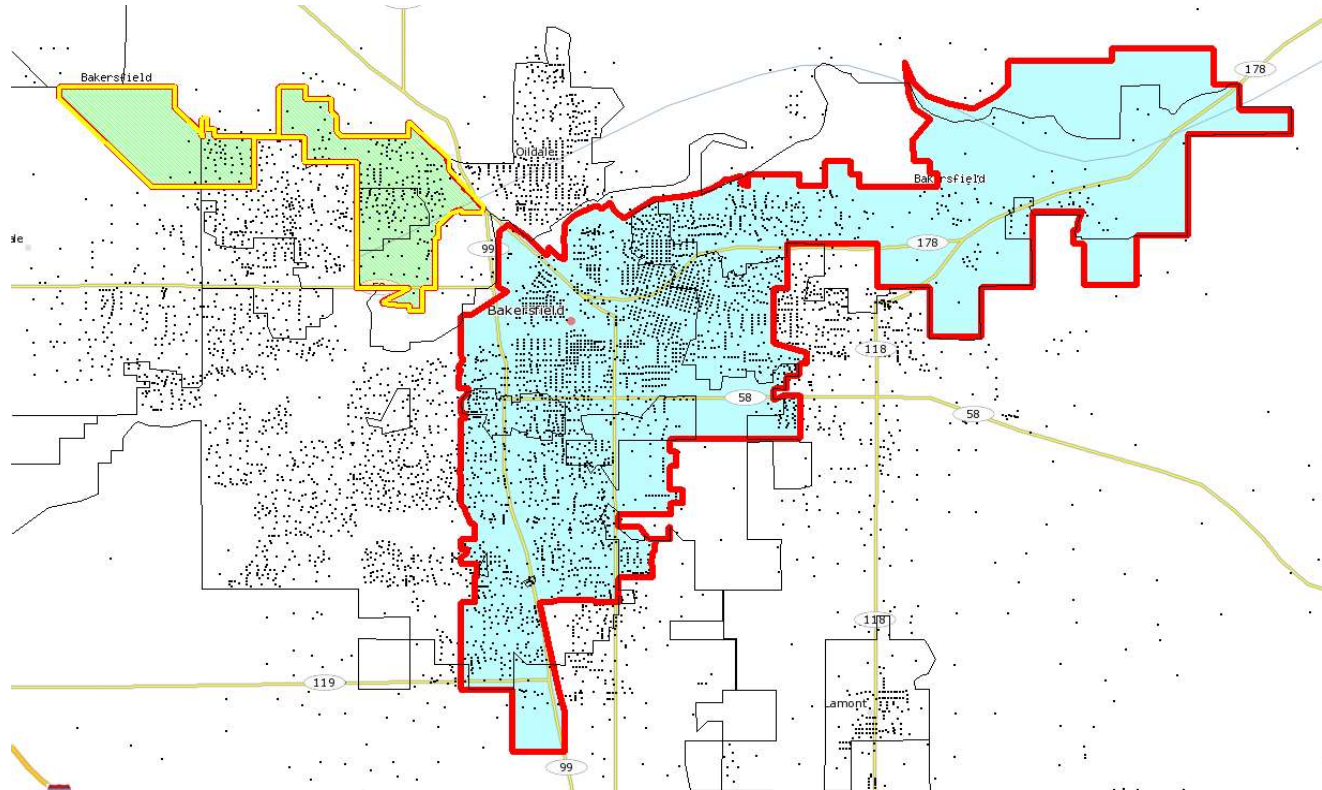


California Water Service Company - Bakersfield District
Water Supply and Demand Analysis and Projections
Historical and Projected Average Day, Maximum Day, and Peak Demand

Worksheet 11

Year	Historical Annual Demand		Average Day Demand		Maximum Day Demand		MDD ADD Ratio	Estimated Peak Hour Demand		PHD MDD Ratio	PHD ADD Ratio	Measured Peak Hour Demand		PHD MDD Ratio
	(AFY)	(MGY)	(MGD)	Per Service (GPD)	(MGD)	Per Service (GPD)		(MGD)	(GPM)			(MGD)	(GPM)	
1980	51,371	16,739	45.86	1,016	96.12	2,130	2.10	144.18	100,128	1.50	3.14			
1981	54,218	17,667	48.40	1,057	90.26	1,972	1.86	135.39	94,018	1.50	2.80			
1982	51,403	16,750	45.89	991	88.02	1,900	1.92	132.03	91,684	1.50	2.88			
1983	52,674	17,164	47.02	1,002	96.84	2,064	2.06	145.26	100,872	1.50	3.09			
1984	61,509	20,043	54.91	1,144	100.59	2,096	1.83	150.89	104,783	1.50	2.75			
1985	60,192	19,614	53.74	1,099	98.57	2,016	1.83	147.86	102,681	1.50	2.75			
1986	61,292	19,972	54.72	1,093	103.37	2,064	1.89	155.06	107,677	1.50	2.83			
1987	60,052	19,568	53.61	1,059	95.37	1,884	1.78	143.06	99,345	1.50	2.67			
1988	61,287	19,970	54.71	1,076	96.70	1,901	1.77	145.06	100,733	1.50	2.65			
1989	62,396	20,332	55.70	1,090	93.31	1,825	1.68	139.96	97,193	1.50	2.51			
1990	62,057	20,221	55.40	1,072	94.15	1,822	1.70	141.22	98,071	1.50	2.55			
1991	59,075	19,250	52.74	1,005	94.27	1,796	1.79	141.40	98,193	1.50	2.68			
1992	66,436	21,648	59.31	1,115	97.41	1,832	1.64	146.12	101,472	1.50	2.46			
1993	68,206	22,225	60.89	1,134	107.45	2,001	1.76	161.17	111,925	1.50	2.65			
1994	71,817	23,402	64.11	1,192	114.36	2,126	1.78	171.54	119,128	1.50	2.68			
1995	69,164	22,537	61.75	1,147	112.46	2,090	1.82	168.69	117,146	1.50	2.73			
1996	73,246	23,867	65.39	1,211	116.22	2,152	1.78	174.33	121,063	1.50	2.67			
1997	73,501	23,950	65.62	1,205	112.24	2,060	1.71	168.36	116,917	1.50	2.57			
1998	62,863	20,484	56.12	1,024	115.67	2,111	2.06	173.51	120,491	1.50	3.09			
1999	72,220	23,533	64.47	1,165	113.65	2,054	1.76	170.47	118,384	1.50	2.64			
2000	75,822	24,707	67.69	1,198	126.29	2,234	1.87	189.43	131,547	1.50	2.80			
2001	74,655	24,326	66.65	1,161	124.88	2,176	1.87	187.32	130,085	1.50	2.81			
2002	77,986	25,412	69.62	1,195	125.32	2,152	1.80	187.98	130,539	1.50	2.70			
2003	79,994	26,066	71.41	1,207	128.35	2,169	1.80	192.52	133,698	1.50	2.70			
2004	79,229	25,817	70.73	1,163	127.46	2,096	1.80	191.19	132,770	1.50	2.70			
2005	76,338	24,875	68.15	1,094	122.67	1,970	1.80	184.01	127,781	1.50	2.70			
2006	86,304	28,122	77.05	1,211	123.43	1,940	1.60	185.15	128,573	1.50	2.40			
2007	82,362	26,838	73.53	1,140	125.73	1,949	1.71	188.60	130,969	1.50	2.56			
2008	82,317	26,823	73.49	1,138	117.38	1,818	1.60	176.07	122,271	1.50	2.40			
2009	81,497	26,556	72.76	1,115	113.85	1,745	1.56	170.78	118,594	1.50	2.35			
2010	77,178	25,148	68.90	1,037	130.58	1,966	1.90	195.87	136,021	1.50	2.84			
2011	75,063	24,459	67.01	993	131.08	1,943	1.96	196.62	136,542	1.50	2.93			
2012	81,597	26,589	72.85	1,070	129.38	1,901	1.78	194.07	134,771	1.50	2.66			
2013	76,033	24,775	67.88	990	101.66	1,483	1.50	152.49	105,896	1.50	2.25			
2014	71,507	23,301	63.84	924	120.60	1,746	1.89	180.90	125,625	1.50	2.83			
2015	55,033	17,932	49.13	706										
10 year Average			68.64	1,032	121.64	1,846	1.73	182.45	126,704	1.50	2.59			
5 year Average			64.14	937	122.66	1,808	1.80	183.99	127,771	1.50	2.70			

California Water Service Company - Bakersfield District
Water Supply and Demand Analysis and Projections
MarPlot Summary

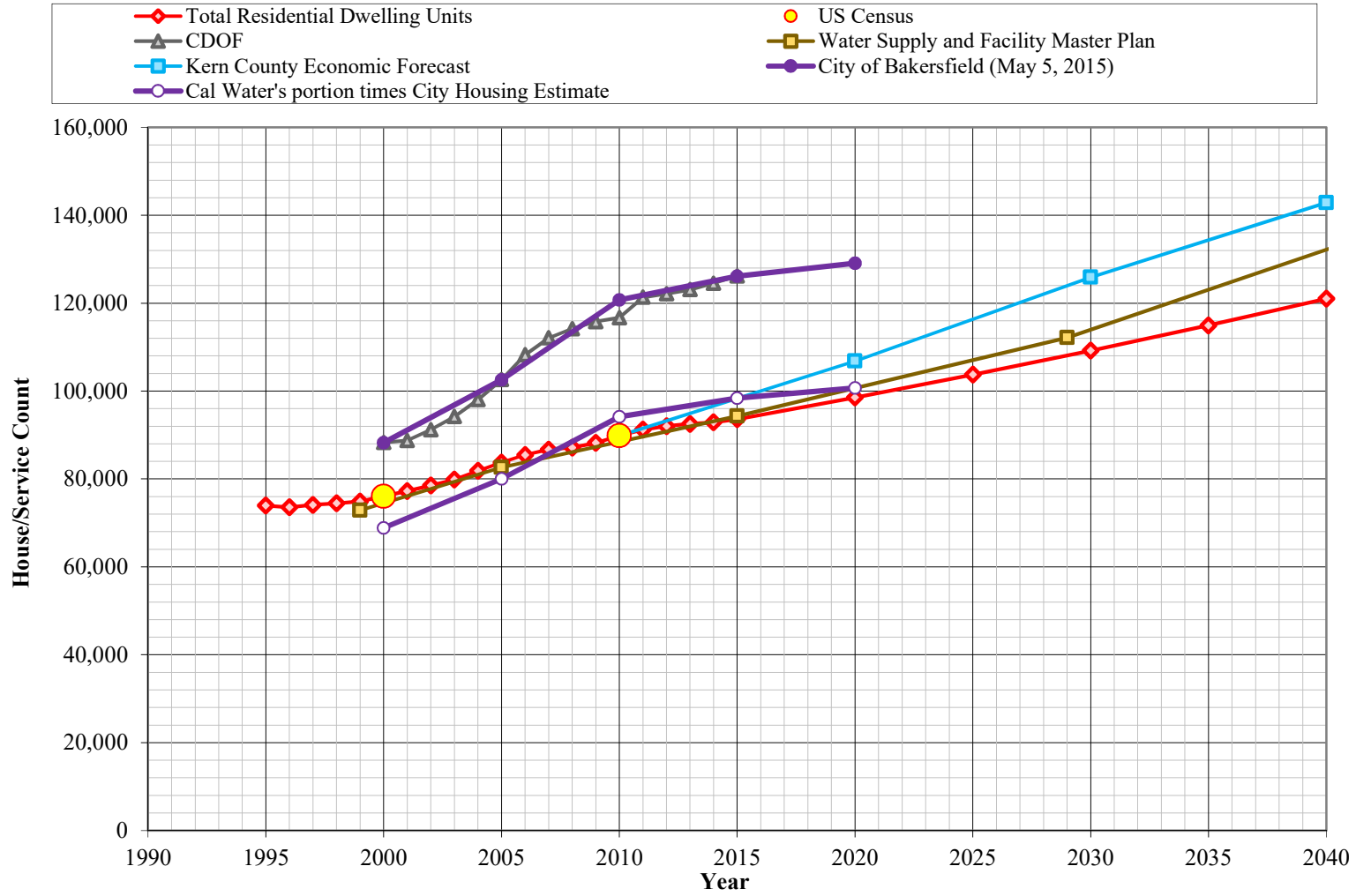


System	US Census 2000 Summary				US Census 2010 Summary				2000-2010 Change		
	Census Blocks	Population	Housing Units (HU)	Density	Census Blocks	Population	Housing Units (HU)	Density	Percentage Population Change	Percentage HU Change	Density Change
Bakersfield					2,651	243,138	80,892	3.01			
North Garden					250	24,117	8,945	2.70			
District	2,699	220,851	76,022	2.91	2,901	267,255	89,837	2.97	21.0%	18.2%	2.4%

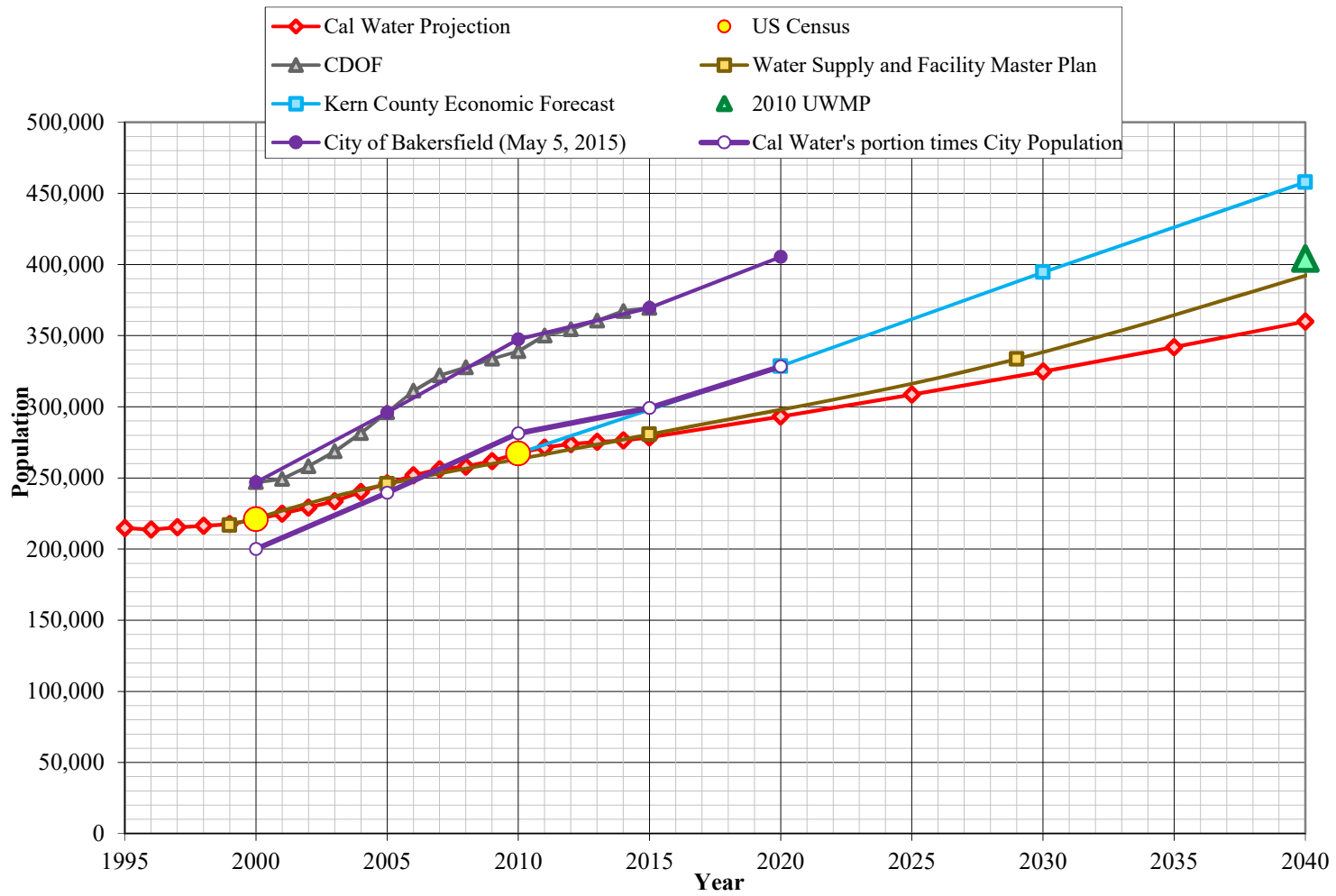
City of Bakersfield	3,318	330,483	115,715	2.86
Percent of City service by Cal Water	87.4%	80.9%	77.6%	

MARPLOT disclaimer: The population and housing number given above are only rough estimates. They are based on the US Census Blocks. Although Census Blocks are polygons, MARPLOT uses the centroid, or center point, rather than the entire polygon. If a Census Block centroid is within any of the MARPLOT selected objects, the population and housing numbers for that block are tallied, even if only part of the block is within the selected object. It is possible for a block not be counted if its centroid is not within selected objects, even though part of the block is within the selected objects.

Housing Projections



Population Projections



California Water Service Company - Bakersfield District
Water Supply and Demand Analysis and Projections
Population Estimate

Year	US Census		Persons per Housing Unit	Single Family Residential	Multi Family Residential			Flat Rate Residential
	Population	Housing Units		Services (DU)	Services	Units (DU)	Density	Services (DU)
2000	220,851	76,022	2.905	12,972	448	26,862	60.0	36,188
2010	267,255	89,837	2.975	28,480	1,089	31,480	28.9	29,877
	21.0%	18.2%	2.4%	119.6%	143.1%	17.2%	-51.8%	-17.4%

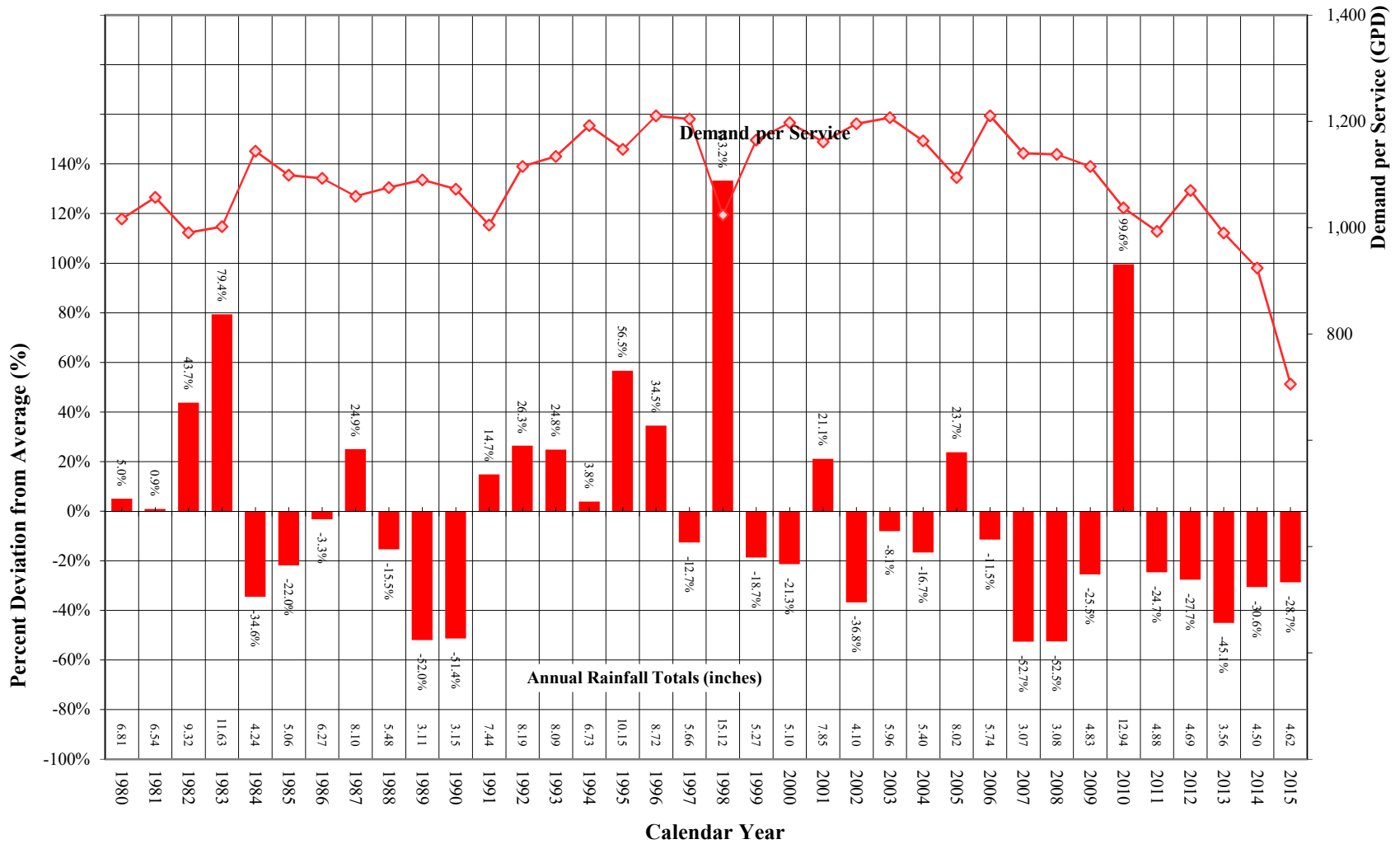
Year	Single Family Residential Services (DU)	Multi Family Residential			Flat Rate Residential Services (DU)	Total Residential Dwelling Units	Persons per Housing Unit	Estimated District Population
		Services	Residential Units (DU)	Unit Density				
1995	8,784	458	27,457	60.0	37,720	73,961	2.905	214,863
1996	9,400	446	26,782	60.0	37,373	73,555	2.905	213,683
1997	10,288	448	26,902	60.0	36,927	74,117	2.905	215,318
1998	11,011	448	26,907	60.0	36,538	74,456	2.905	216,301
1999	11,871	446	26,782	60.0	36,226	74,879	2.905	217,530
2000	12,972	448	26,862	60.0	36,188	76,022	2.905	220,851
2001	13,847	450	27,324	60.7	36,068	77,239	2.912	224,924
2002	15,033	449	27,786	61.9	35,705	78,523	2.919	229,212
2003	16,218	516	28,247	54.7	35,380	79,845	2.926	233,630
2004	18,737	970	28,709	29.6	34,391	81,837	2.933	240,029
2005	21,168	960	29,171	30.4	33,395	83,734	2.940	246,177
2006	23,069	936	29,633	31.7	32,776	85,477	2.947	251,898
2007	24,444	931	30,094	32.3	32,168	86,707	2.954	256,127
2008	25,154	998	30,556	30.6	31,418	87,129	2.961	257,982
2009	26,478	1,035	31,018	30.0	30,720	88,216	2.968	261,817
2010	28,480	1,089	31,480	28.9	29,877	89,837	2.975	267,255
2011	30,848	1,185	31,942	27.0	28,422	91,212	2.975	271,344
2012	33,434	1,194	32,184	27.0	26,419	92,036	2.975	273,798
2013	35,947	1,194	32,198	27.0	24,391	92,535	2.975	275,282
2014	38,190	1,190	32,074	27.0	22,635	92,899	2.975	276,364
2015	41,541	1,199	32,319	27.0	19,753	93,613	2.975	278,488
2020	64,376	1,267	34,166	27.0	0	98,542	2.975	293,152
2025	67,613	1,340	36,119	27.0	0	103,732	2.975	308,590
2030	71,013	1,416	38,183	27.0	0	109,196	2.975	324,845
2035	74,583	1,497	40,365	27.0	0	114,949	2.975	341,959
2040	78,334	1,583	42,672	27.0	0	121,006	2.975	359,979

Λ
|
ACTUAL
PROJECTED
|
V

Λ
|
ACTUAL
PROJECTED
|
V

Notes: linear extrapolation used to estimated MFR-DU from 2000. Estimate extend until 2011 due to reclassification, afterwards a constant MFR Unit Density is used.

Comparison of Annual Rainfall to Historical Average



**California Water Service Company - Bakersfield District
Water Supply and Demand Analysis and Projections**

Temperature & Rainfall History

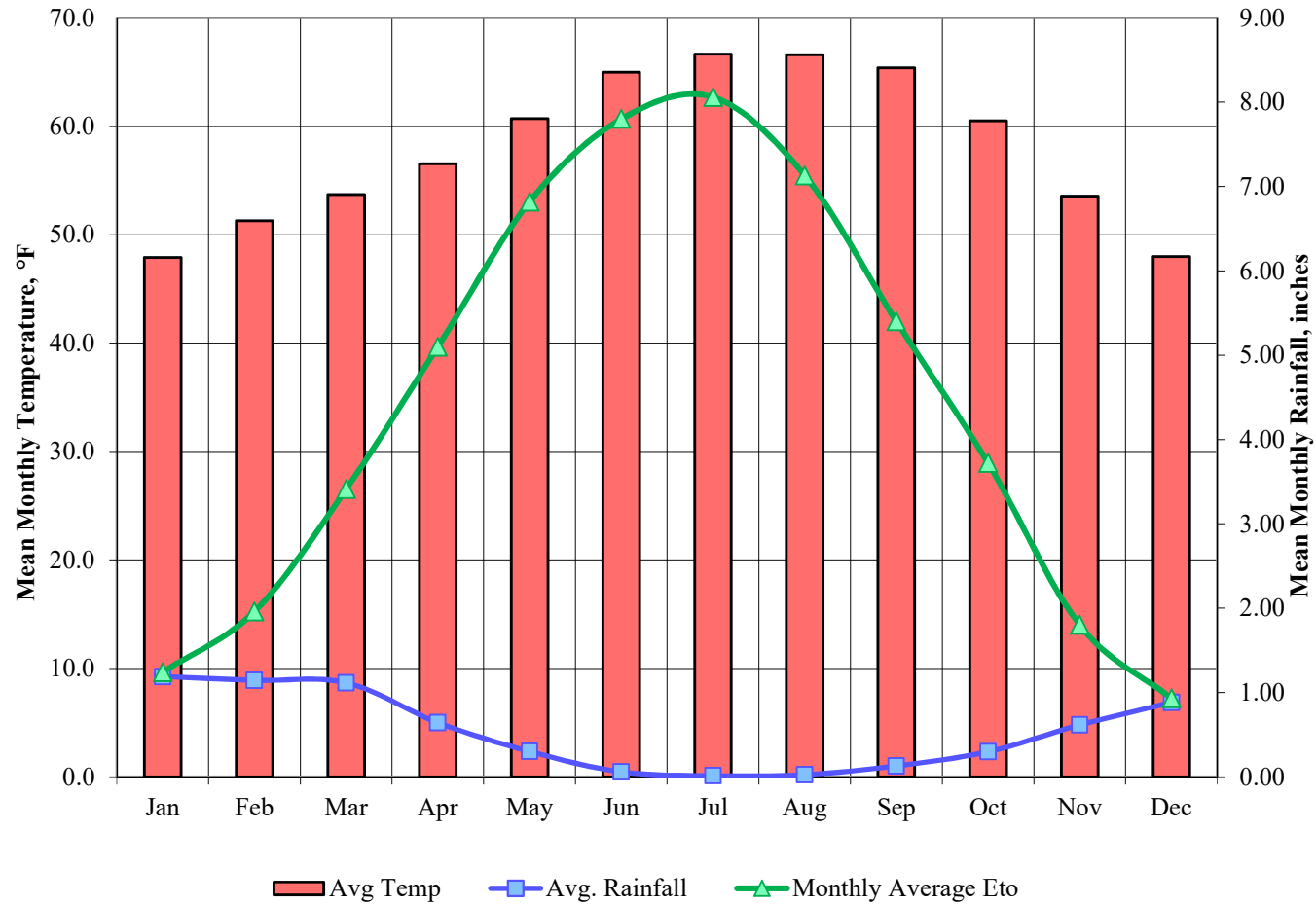
Year	Precipitation		Temperature			Demand per Service (gpd)	Percent of Average Demand
	Annual (in)	Percent Variation	Tmax (°F)	Tmin (°F)	Mean (°F)		
1980	6.81	5.0%	78.01	38.50	58.3	1,016	-6.8%
1981	6.54	0.9%	79.21	41.50	60.4	1,057	-3.0%
1982	9.32	43.7%	75.98	36.60	56.3	991	-9.1%
1983	11.63	79.4%	76.25	37.20	56.7	1,002	-8.1%
1984	4.24	-34.6%	77.72	38.20	58.0	1,144	5.0%
1985	5.06	-22.0%	75.85	35.90	55.9	1,099	0.8%
1986	6.27	-3.3%	77.94	38.40	58.2	1,093	0.2%
1987	8.10	24.9%	77.95	35.20	56.6	1,059	-2.8%
1988	5.48	-15.5%	79.12	35.80	57.5	1,076	-1.3%
1989	3.11	-52.0%	77.98	32.00	55.0	1,090	0.0%
1990	3.15	-51.4%	78.01	30.70	54.4	1,072	-1.6%
1991	7.44	14.7%	78.06	37.10	57.6	1,005	-7.8%
1992	8.19	26.3%	78.45	36.40	57.4	1,115	2.3%
1993	8.09	24.8%	77.65	37.40	57.5	1,134	4.0%
1994	6.73	3.8%	77.71	36.80	57.3	1,192	9.4%
1995	10.15	56.5%	78.13	41.90	60.0	1,147	5.3%
1996	8.72	34.5%	78.45	39.00	58.7	1,211	11.1%
1997	5.66	-12.7%	77.53	36.70	57.1	1,205	10.5%
1998	15.12	133.2%	74.54	33.10	53.8	1,024	-6.0%
1999	5.27	-18.7%	77.28	34.80	56.0	1,165	6.9%
2000	5.10	-21.3%	78.13	36.20	57.2	1,198	9.9%
2001	7.85	21.1%	78.97	37.80	58.4	1,161	6.5%
2002	4.10	-36.8%	78.49	37.80	58.1	1,195	9.7%
2003	5.96	-8.1%	78.74	40.50	59.6	1,207	10.7%
2004	5.40	-16.7%	77.98	36.60	57.3	1,163	6.7%
2005	8.02	23.7%	77.46	41.80	59.6	1,094	0.4%
2006	5.74	-11.5%	78.06	35.90	57.0	1,211	11.1%
2007	3.07	-52.7%	78.28	31.60	54.9	1,140	4.6%
2008	3.08	-52.5%	77.69	38.20	57.9	1,138	4.4%
2009	4.83	-25.5%	78.25	37.90	58.1	1,115	2.3%
2010	12.94	99.6%	76.32	40.90	58.6	1,037	-4.8%
2011	4.88	-24.7%	76.06	31.70	53.9	993	-8.9%
2012	4.69	-27.7%	79.50	36.60	58.1	1,070	-1.8%
2013	3.56	-45.1%	79	33.5	56.2	990	-9.2%
2014	4.50	-30.6%	81	39.0	60.1	924	-15.2%
2015	4.62	-28.7%	79	35.5	57.4	706	-35.3%
2016							
2017							
2018							
2019							
2020							

Precipitation (1895 - present)						Monthly Average Eto
	Mean	High	Year	Low	Year	
	in.	in.	-	in.	-	
Jan	1.19	4.03	1916	0.00	1948	1.24
Feb	1.14	6.11	1998	0.00	1898	1.96
Mar	1.12	5.21	1991	0.00	1934	3.41
Apr	0.64	2.95	1967	0.00	1905	5.10
May	0.30	2.48	1921	0.00	1897	6.82
Jun	0.06	0.65	1933	0.00	1910	7.80
Jul	0.01	0.39	1913	0.00	1964	8.06
Aug	0.03	0.82	1983	0.00	1960	7.13
Sep	0.13	1.76	1976	0.00	1899	5.40
Oct	0.30	1.61	1974	0.00	1900	3.72
Nov	0.61	2.80	1960	0.00	1898	1.80
Dec	0.88	6.14	2010	0.00	1900	0.93
Annual	6.41	15.12	1998	2.41	1898	53.30

Temperature (1895 - present)			
	Tmax	Tmin	Mean
	°F	°F	°F
Jan	57.3	38.5	47.9
Feb	61.2	41.4	51.3
Mar	64.3	43.1	53.7
Apr	68.4	44.7	56.6
May	72.9	48.5	60.7
Jun	77.4	52.6	65.0
Jul	78.4	54.9	66.7
Aug	78.5	54.7	66.6
Sep	78.2	52.6	65.4
Oct	73.0	48.0	60.5
Nov	64.4	42.7	53.6
Dec	57.8	38.2	48.0
Annual	69.3	46.7	58.0

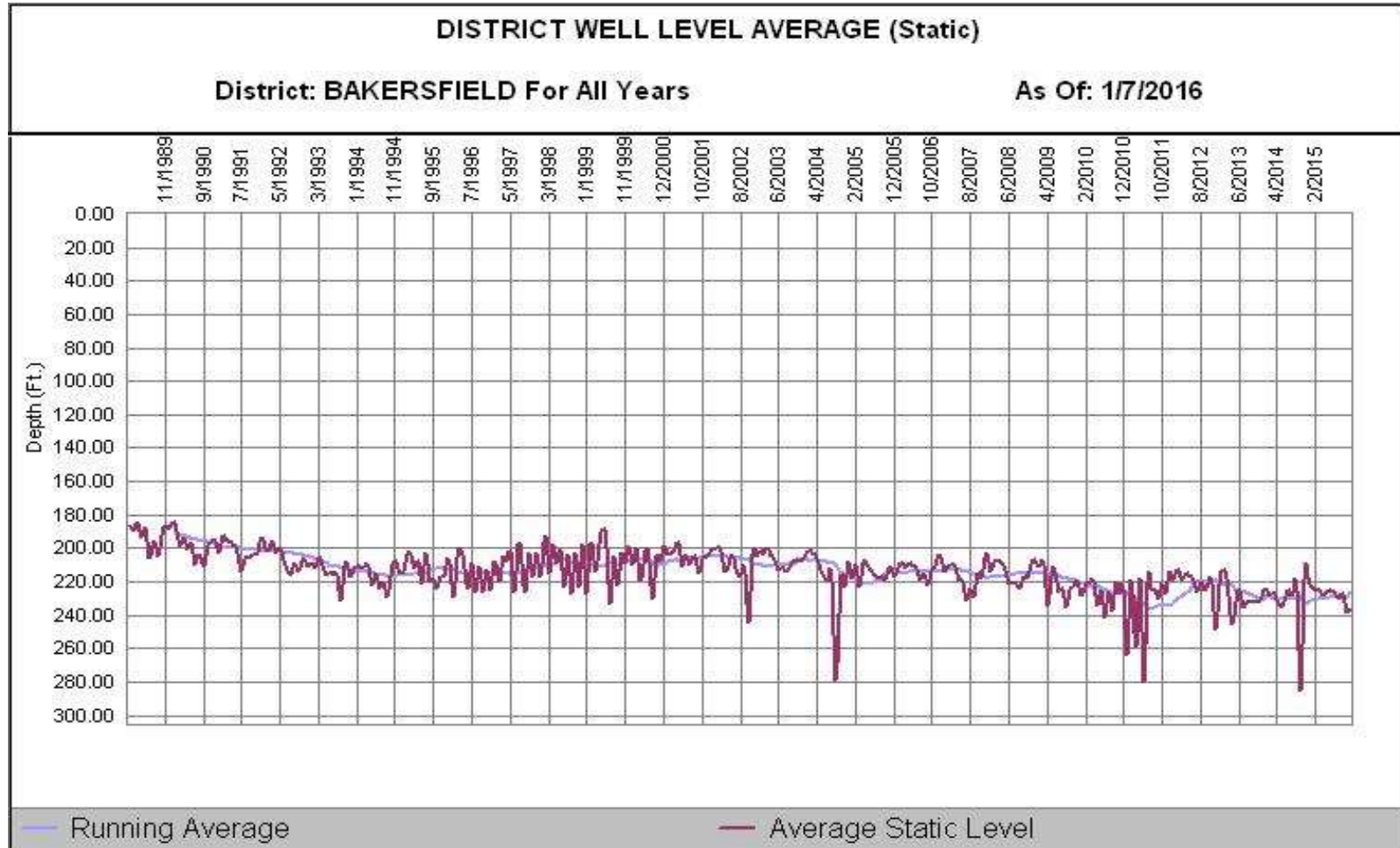
- 1) Eto values based on California Irrigation Management Information System (CIMIS), <http://www.cimis.water.ca.gov/cimis/welcome.jsp>, EvapoTranspiration (Eto) Zones Map, Zone 12
- 2) PPT, Tmax, Tmin obtained from PRISM where, PPT is total monthly rainfall, Tmax is average of maximum temperatures for given month, and Tmin is average of minimum temperatures for given month
- 3) Percent variation based on average of 1980 to present values

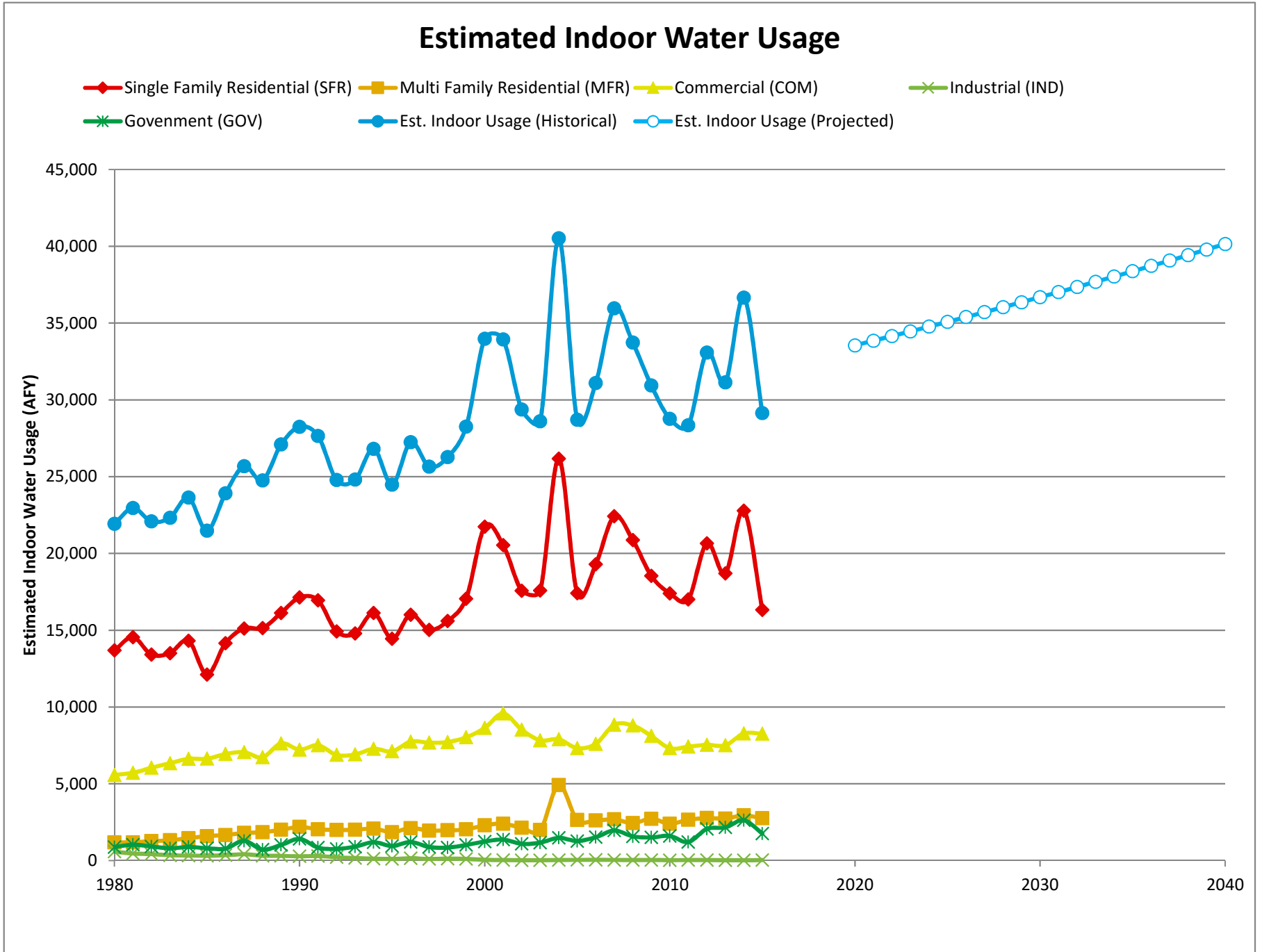
Average Monthly Temperature, Rainfall, and Monthly Eto



California Water Service Company - Bakersfield District Water Supply and Demand Analysis and Projections

Groundwater Production Facilities





California Water Service Company - Bakersfield District
Water Supply and Demand Analysis and Projections

Estimated Indoor/Outdoor Water Usage

Year	Single Family Residential (SFR)								Multi Family Residential (MFR)				Commercial (COM)			
	SFR Jan Usage	Metered SFR Indoor Use (Annualized 90% of January Total)		Indoor Flat Rate Usage (AFY)	Total SFR Indoor Usage			MFR Jan Usage	MFR Indoor Use (Annualized 90% of January Total)			COM Jan Usage	COM Indoor Use (Annualized 90% of January Total)			
		JAN (CCF)	AFY		AF/Serv	AFY	GPD/Serv		%	(CCF)	AFY		GPD/Serv	%	(CCF)	AFY
1980	55,891	1,386	0.351	12,305	13,691	314	41%	47,828	1,186	3,332	70%	224,833	5,574	916	66%	
1981	60,507	1,500	0.368	13,044	14,544	329	41%	48,042	1,191	3,221	66%	230,696	5,720	923	62%	
1982	58,056	1,439	0.336	11,975	13,415	300	40%	51,406	1,275	3,438	73%	243,899	6,047	960	69%	
1983	60,168	1,492	0.334	12,019	13,511	298	40%	53,323	1,322	3,334	71%	255,704	6,340	992	68%	
1984	65,209	1,617	0.346	12,702	14,319	309	36%	59,035	1,464	3,401	68%	267,168	6,624	1,009	65%	
1985	56,258	1,395	0.288	10,721	12,116	257	31%	64,320	1,595	3,394	66%	267,610	6,635		64%	
1986	66,167	1,641	0.329	12,521	14,162	293	36%	67,302	1,669	3,379	65%	280,000	6,942	1,014	65%	
1987	70,568	1,750	0.347	13,366	15,116	310	40%	72,655	1,801	3,559	69%	284,712	7,059	1,021	65%	
1988	72,191	1,790	0.346	13,354	15,143	309	39%	74,667	1,851	3,675	66%	271,300	6,726	968	63%	
1989	78,060	1,935	0.366	14,191	16,126	327	41%	80,839	2,004	4,001	70%	307,878	7,633	1,091	71%	
1990	84,649	2,099	0.385	15,033	17,132	343	44%	88,455	2,193	4,363	76%	291,395	7,225	1,029	66%	
1991	89,066	2,208	0.374	14,737	16,945	334	45%	82,442	2,044	4,055	74%	302,936	7,511	1,067	71%	
1992	86,459	2,144	0.325	12,774	14,918	290	34%	80,344	1,992	3,945	70%	277,634	6,883	968	64%	
1993	94,325	2,339	0.319	12,460	14,799	285	32%	80,984	2,008	3,940	73%	278,870	6,914	966	65%	
1994	111,817	2,772	0.347	13,347	16,119	309	33%	83,880	2,080	4,069	74%	293,642	7,280	1,019	66%	
1995	110,041	2,728	0.311	11,716	14,445	277	31%	74,737	1,853	3,615	68%	286,907	7,113	992	64%	
1996	129,788	3,218	0.342	12,794	16,012	306	33%	85,370	2,117	4,234	74%	312,366	7,745	1,088	63%	
1997	132,034	3,274	0.318	11,750	15,023	284	31%	78,809	1,954	3,891	68%	309,737	7,679	1,076	62%	
1998	145,668	3,612	0.328	11,985	15,596	293	39%	79,618	1,974	3,930	70%	311,369	7,720	1,083	67%	
1999	169,778	4,209	0.355	12,846	17,055	317	36%	82,020	2,034	4,067	69%	323,845	8,029	1,128	65%	
2000	231,406	5,737	0.442	16,006	21,743	395	44%	92,533	2,294	4,575	73%	348,264	8,635	1,196	66%	
2001	229,841	5,699	0.412	14,844	20,542	367	42%	96,987	2,405	4,771	81%	386,221	9,576	1,307	73%	
2002	210,060	5,208	0.346	12,370	17,578	309	35%	86,070	2,134	4,245	70%	343,967	8,528	1,161	63%	
2003	222,913	5,527	0.341	12,057	17,584	304	34%	80,319	1,991	3,445	60%	315,926	7,833	1,079	60%	
2004	372,301	9,231	0.493	16,943	26,173	440	51%	198,412	4,919	4,527	117%	318,586	7,899	1,171	66%	
2005	272,434	6,755	0.319	10,656	17,411	285	36%	106,833	2,649	2,463	71%	295,376	7,323	1,081	62%	
2006	321,413	7,969	0.345	11,322	19,291	308	34%	105,482	2,615	2,495	72%	306,634	7,602	1,108	62%	
2007	390,443	9,680	0.396	12,739	22,420	354	42%	108,276	2,685	2,573	77%	356,621	8,842	1,269	69%	
2008	374,352	9,281	0.369	11,593	20,874	329	40%	98,628	2,445	2,188	67%	354,786	8,796	1,253	67%	
2009	346,219	8,584	0.324	9,959	18,543	289	35%	109,787	2,722	2,347	73%	327,516	8,120	1,161	63%	
2010	342,555	8,493	0.298	8,910	17,403	266	35%	97,092	2,407	1,974	68%	295,094	7,316	1,049	61%	
2011	357,084	8,853	0.287	8,157	17,010	256	36%	107,191	2,658	2,002	71%	299,193	7,418	1,060	62%	
2012	465,539	11,542	0.345	9,120	20,663	308	40%	111,800	2,772	2,073	71%	304,105	7,540	1,075	61%	
2013	449,322	11,140	0.310	7,559	18,699	277	40%	110,488	2,739	2,047	71%	302,767	7,507	1,071	61%	
2014	576,867	14,302	0.375	8,477	22,780	334	53%	118,780	2,945	2,210	79%	333,903	8,279	1,178	67%	
2015	497,960	12,346	0.201	3,979	16,325	238	50%	111,122	2,755	2,052	82%	333,109	8,259	1,169	82%	
2016					19,597	283			2,820	2,077			7,876	1,111		
2017					19,790	283			2,852	2,077			7,909	1,111		
2018					19,985	283			2,884	2,077			7,943	1,111		
2019					20,182	283			2,916	2,077			7,976	1,111		
2020					20,381	283			2,948	2,077			8,010	1,111		
2021					20,582	283			2,981	2,077			8,043	1,111		
2022					20,785	283			3,015	2,077			8,077	1,111		
2023					20,990	283			3,048	2,077			8,111	1,111		
2024					21,197	283			3,082	2,077			8,145	1,111		
2025					21,406	283			3,117	2,077			8,180	1,111		
2026					21,617	283			3,152	2,077			8,214	1,111		
2027					21,830	283			3,187	2,077			8,249	1,111		
2028					22,046	283			3,223	2,077			8,283	1,111		
2029					22,263	283			3,259	2,077			8,318	1,111		
2030					22,482	283			3,295	2,077			8,353	1,111		
2031					22,704	283			3,332	2,077			8,388	1,111		
2032					22,928	283			3,369	2,077			8,424	1,111		
2033					23,154	283			3,407	2,077			8,459	1,111		
2034					23,382	283			3,445	2,077			8,495	1,111		
2035					23,613	283			3,483	2,077			8,531	1,111		
2036					23,846	283			3,522	2,077			8,567	1,111		
2037					24,081	283			3,562	2,077			8,603	1,111		
2038					24,318	283			3,601	2,077			8,639	1,111		
2039					24,558	283			3,642	2,077			8,675	1,111		
2040					24,800	283			3,682	2,077			8,712	1,111		

Note: GPD/Service is estimated as the average of the last 5 years for given customer class.

California Water Service Company - Bakersfield District
Water Supply and Demand Analysis and Projections

Estimated Indoor/Outdoor Water Usage

Year	Industrial (IND)				Government (GOV)			
	IND Jan Usage	IND Indoor Use (Annualized 90% of January Total)			GOV Jan Usage	GOV Indoor Use (Annualized 90% of January Total)		
	(CCF)	AFY	GPD/Serv	%	(CCF)	AFY	GPD/Serv	%
1980	23,737	589	9,231	81%	35,740	886	2,556	34%
1981	18,797	466	7,430	78%	41,753	1,035	2,981	38%
1982	17,122	425	6,747	81%	37,292	925	2,667	36%
1983	14,169	351	5,763	75%	32,326	801	2,306	29%
1984	13,319	330	5,651	70%	36,050	894	2,551	27%
1985	12,884	319	5,647	66%	32,649	809	2,219	25%
1986	14,370	356	6,480	77%	31,724	787	2,131	24%
1987	16,677	413	7,664	93%	51,963	1,288	3,503	39%
1988	12,861	319	5,972	73%	29,009	719	1,944	21%
1989	12,471	309	5,863	72%	41,112	1,019	2,702	28%
1990	11,325	281	5,352	74%	57,044	1,414	3,769	38%
1991	12,108	300	5,743	88%	34,307	851	2,215	29%
1992	8,942	222	4,181	71%	30,758	763	1,949	24%
1993	6,895	171	3,324	75%	36,853	914	2,295	28%
1994	5,289	131	2,691	73%	48,407	1,200	3,015	34%
1995	4,417	110	2,189	58%	38,508	955	2,388	31%
1996	6,334	157	3,292	74%	48,861	1,211	3,089	33%
1997	4,439	110	2,401	57%	35,881	890	2,270	24%
1998	5,264	131	2,907	71%	34,289	850	2,158	27%
1999	4,636	115	2,508	69%	41,165	1,021	2,594	29%
2000	2,253	56	1,249	79%	50,167	1,244	2,934	31%
2001	1,538	38	834	67%	55,103	1,366	3,055	35%
2002	1,223	30	684	50%	44,198	1,096	2,449	26%
2003	1,027	25	617	49%	47,149	1,169	2,194	25%
2004	1,406	35	834	63%	59,938	1,486	2,320	30%
2005	1,956	48	1,217	63%	51,503	1,277	1,991	26%
2006	2,136	53	1,326	73%	61,520	1,525	2,357	30%
2007	1,893	47	1,203	55%	79,140	1,962	3,026	34%
2008	1,414	35	946	53%	63,703	1,579	2,375	27%
2009	1,679	42	1,152	79%	60,984	1,512	2,067	27%
2010	1,154	29	809	64%	64,887	1,609	2,172	30%
2011	1,506	37	1,047	67%	48,914	1,213	1,616	22%
2012	1,410	35	975	63%	83,321	2,066	2,691	31%
2013	1,236	31	895	61%	87,245	2,163	2,787	32%
2014	995	25	736	49%	105,983	2,628	3,372	43%
2015	1,407	35	1,027	61%	71,246	1,766	2,216	42%
2016		32	936			2,051	2,536	
2017		32	936			2,082	2,536	
2018		32	936			2,113	2,536	
2019		32	936			2,144	2,536	
2020		32	936			2,176	2,536	
2021		32	936			2,208	2,536	
2022		32	936			2,240	2,536	
2023		32	936			2,274	2,536	
2024		32	936			2,307	2,536	
2025		32	936			2,341	2,536	
2026		32	936			2,376	2,536	
2027		32	936			2,411	2,536	
2028		32	936			2,447	2,536	
2029		32	936			2,483	2,536	
2030		32	936			2,520	2,536	
2031		32	936			2,557	2,536	
2032		32	936			2,595	2,536	
2033		32	936			2,633	2,536	
2034		32	936			2,672	2,536	
2035		32	936			2,712	2,536	
2036		32	936			2,752	2,536	
2037		32	936			2,793	2,536	
2038		32	936			2,834	2,536	
2039		32	936			2,876	2,536	
2040		32	936			2,919	2,536	

Estimated Indoor/Outdoor Usage			
Est. Indoor Usage	Est. Outdoor Usage	Est. Indoor Usage	Est. Outdoor Usage
AFY	AFY	%	%
21,926	29,445	43%	57%
22,956	31,261	42%	58%
22,086	29,317	43%	57%
22,325	30,349	42%	58%
23,631	37,878	38%	62%
21,475	38,717	36%	64%
23,915	37,377	39%	61%
25,678	34,374	43%	57%
24,759	36,527	40%	60%
27,092	35,304	43%	57%
28,245	33,813	46%	54%
27,651	31,424	47%	53%
24,778	41,658	37%	63%
24,806	43,401	36%	64%
26,811	45,006	37%	63%
24,475	44,689	35%	65%
27,241	46,005	37%	63%
25,656	47,845	35%	65%
26,271	36,592	42%	58%
28,253	43,967	39%	61%
33,972	41,850	45%	55%
33,927	40,728	45%	55%
29,366	48,619	38%	62%
28,603	51,391	36%	64%
40,512	38,716	51%	49%
28,708	47,629	38%	62%
31,087	55,217	36%	64%
35,955	46,407	44%	56%
33,730	48,587	41%	59%
30,939	50,557	38%	62%
28,764	48,414	37%	63%
28,336	46,727	38%	62%
33,075	48,522	41%	59%
31,139	44,894	41%	59%
36,656	34,851	51%	49%
29,140	25,892	53%	47%
32,376	46,583	41%	59%
32,665	47,035	41%	59%
32,956	47,492	41%	59%
33,250	47,953	41%	59%
33,547	48,420	41%	59%
33,847	48,891	41%	59%
34,149	49,367	41%	59%
34,455	49,848	41%	59%
34,764	50,333	41%	59%
35,076	50,824	41%	59%
35,391	51,321	41%	59%
35,709	51,822	41%	59%
36,030	52,328	41%	59%
36,355	52,840	41%	59%
36,682	53,357	41%	59%
37,013	53,879	41%	59%
37,348	54,407	41%	59%
37,685	54,941	41%	59%
38,026	55,480	41%	59%
38,371	56,024	41%	59%
38,718	56,574	41%	59%
39,070	57,130	41%	59%
39,424	57,692	41%	59%
39,783	58,260	41%	59%
40,145	58,834	41%	59%

PAGE LEFT BLANK INTENTIONALLY